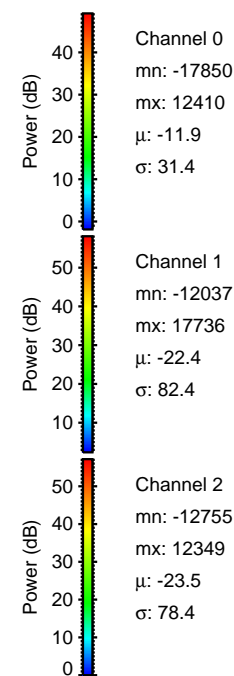
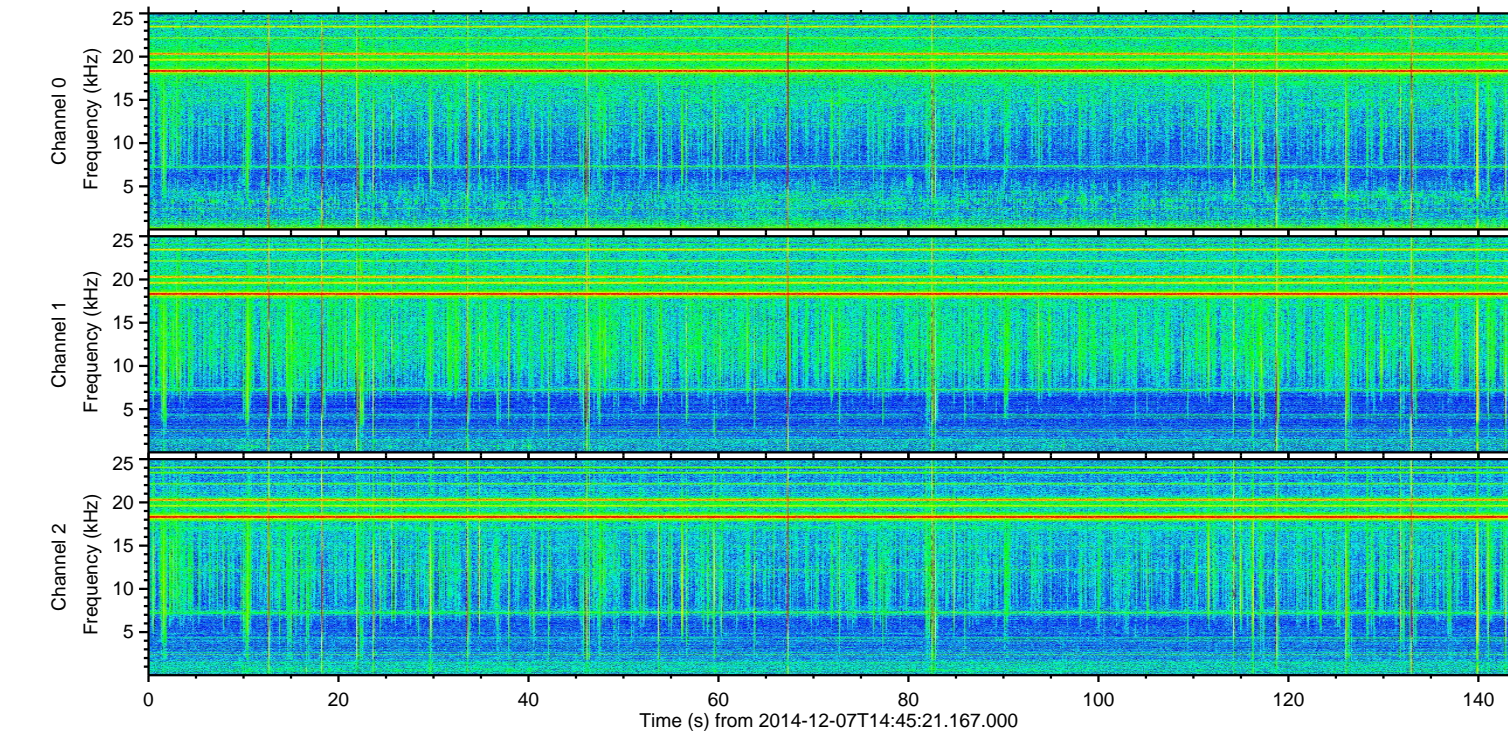
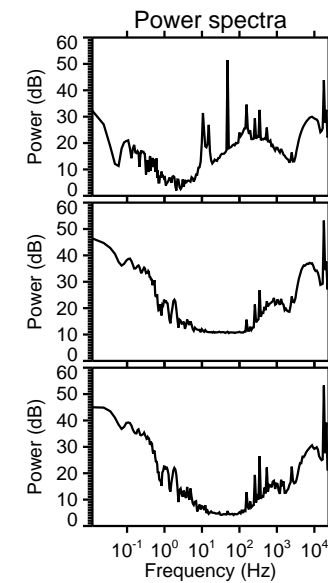
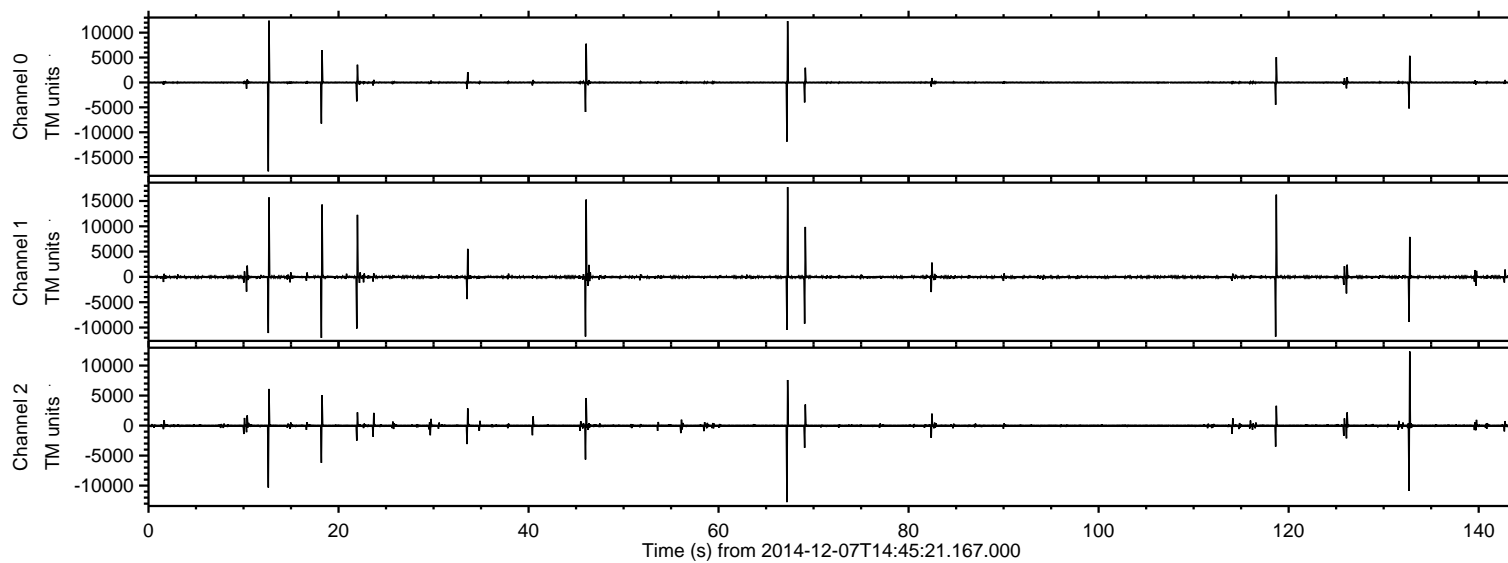


# ELMAVAN 3D WAVEFORMS (Measured data sampled at 50 kHz) 49750 packets of 144 samples from 2014-12-07T14:45:21.167.000.

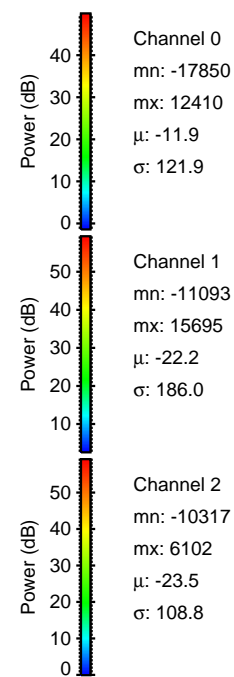
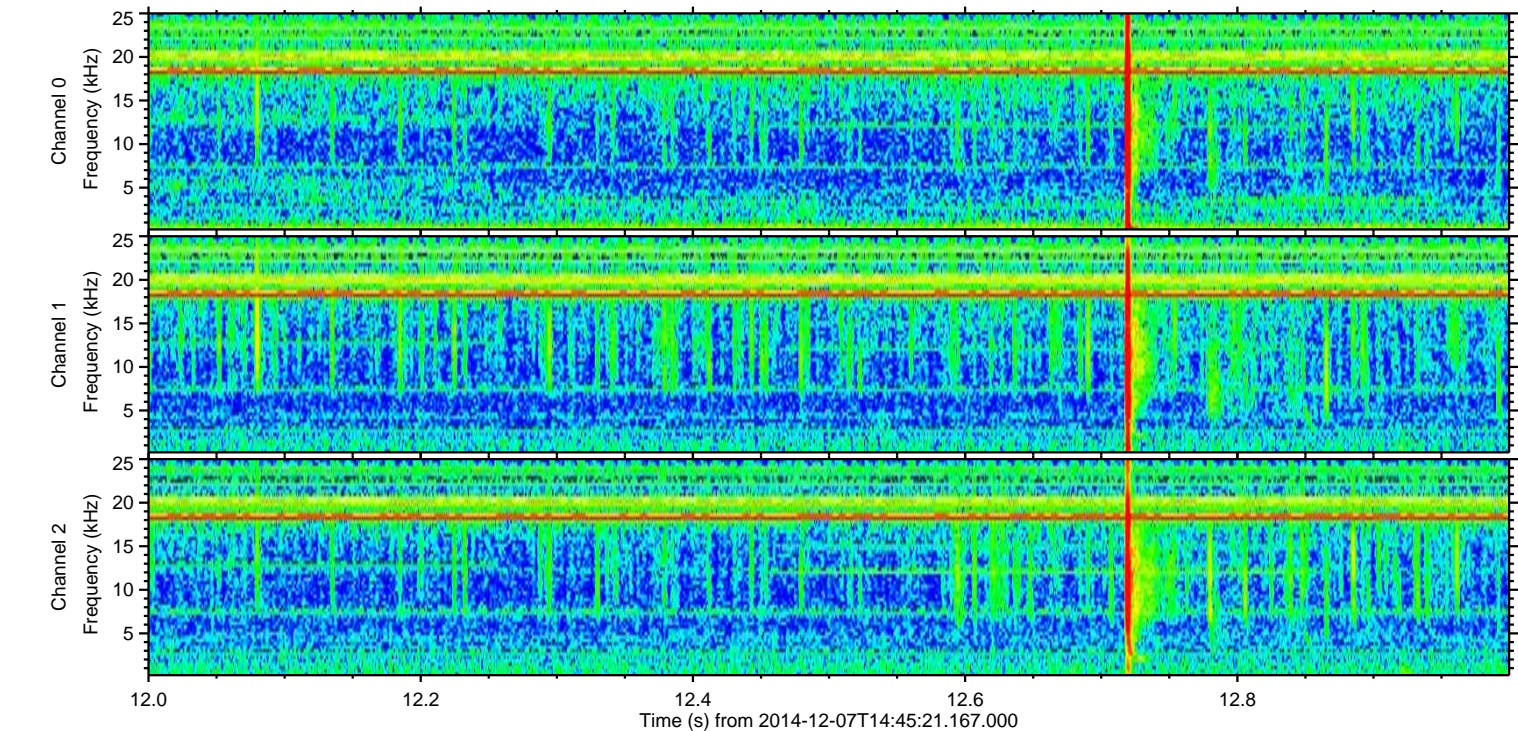
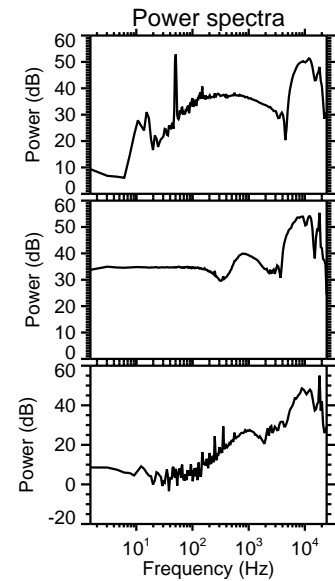
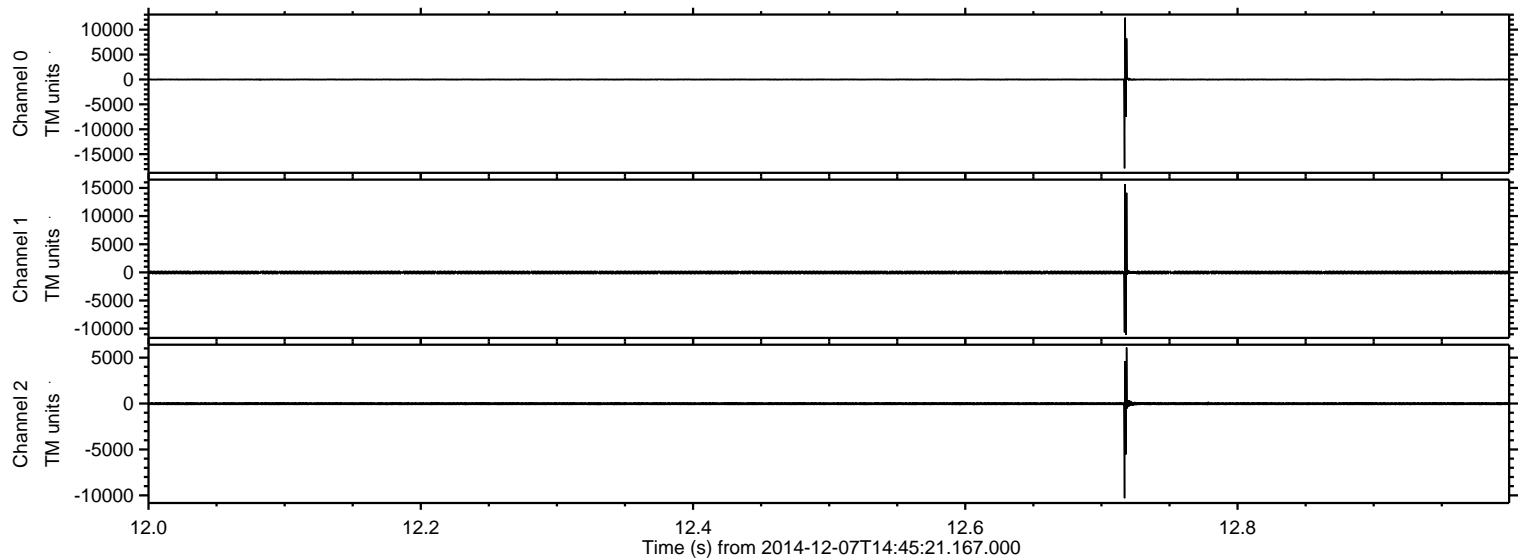
Processed Sun Dec 7 15:52:44 2014 by ELM ver.2012-10-06 from 001\_\_elm20141207\_144520\_\_dat00.bin





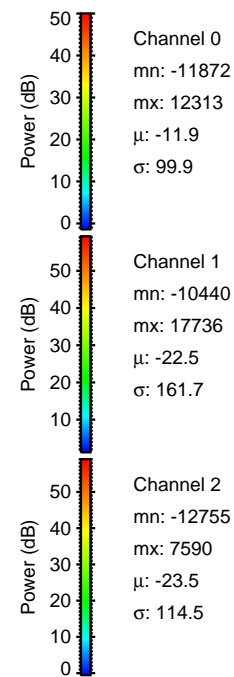
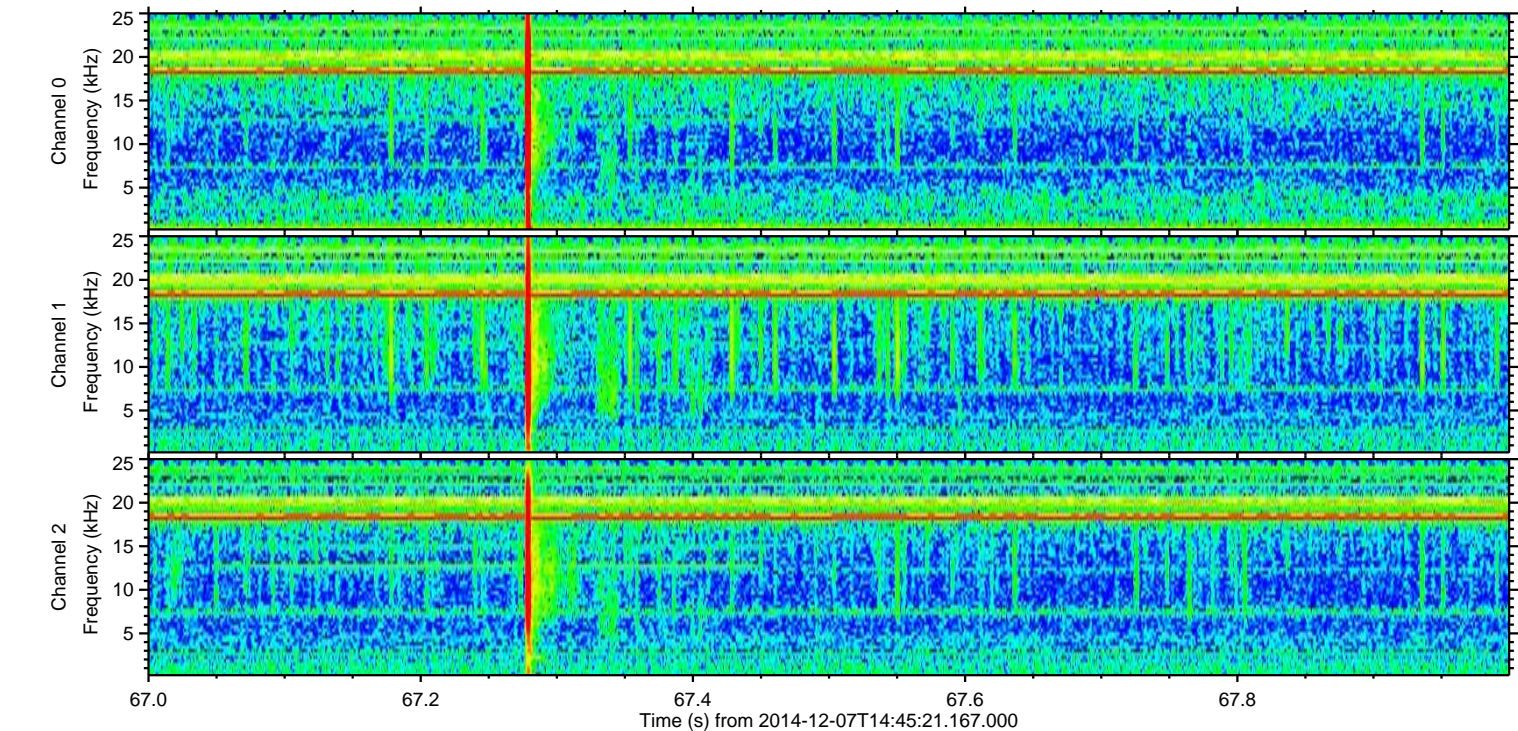
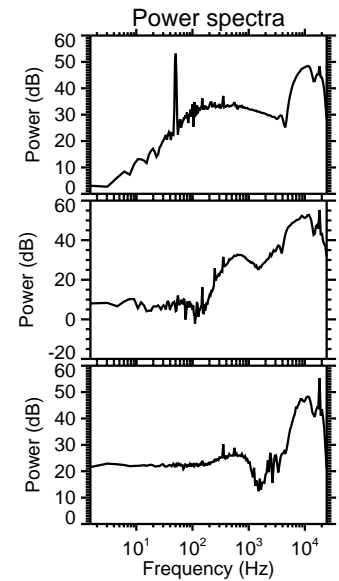
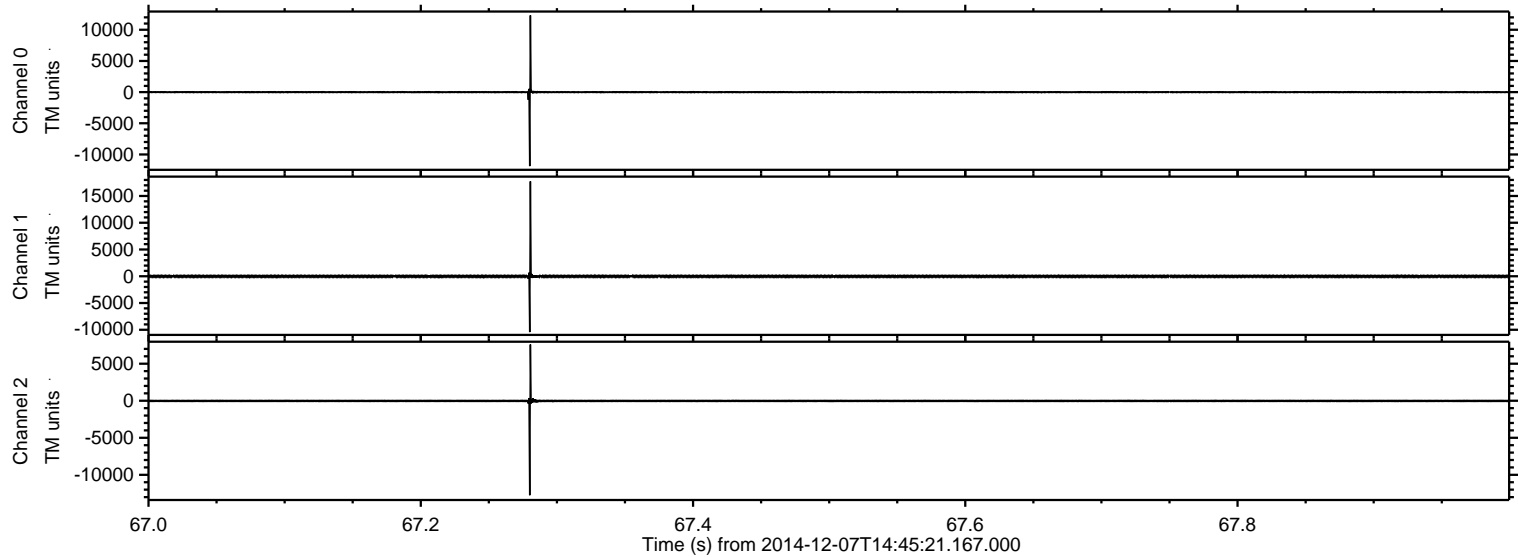
ELMAVAN 3D WAVEFORMS (Measured data sampled at 50 kHz) 49750 packets of 144 samples from 2014-12-07T14:45:21.167.000. Part 13/144

Processed Sun Dec 7 15:52:56 2014 by ELM ver.2012-10-06 from 001\_\_elm20141207\_144520\_\_dat00.bin





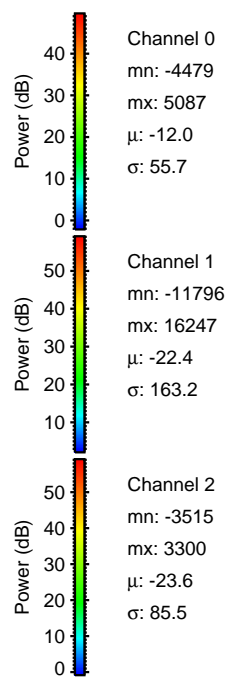
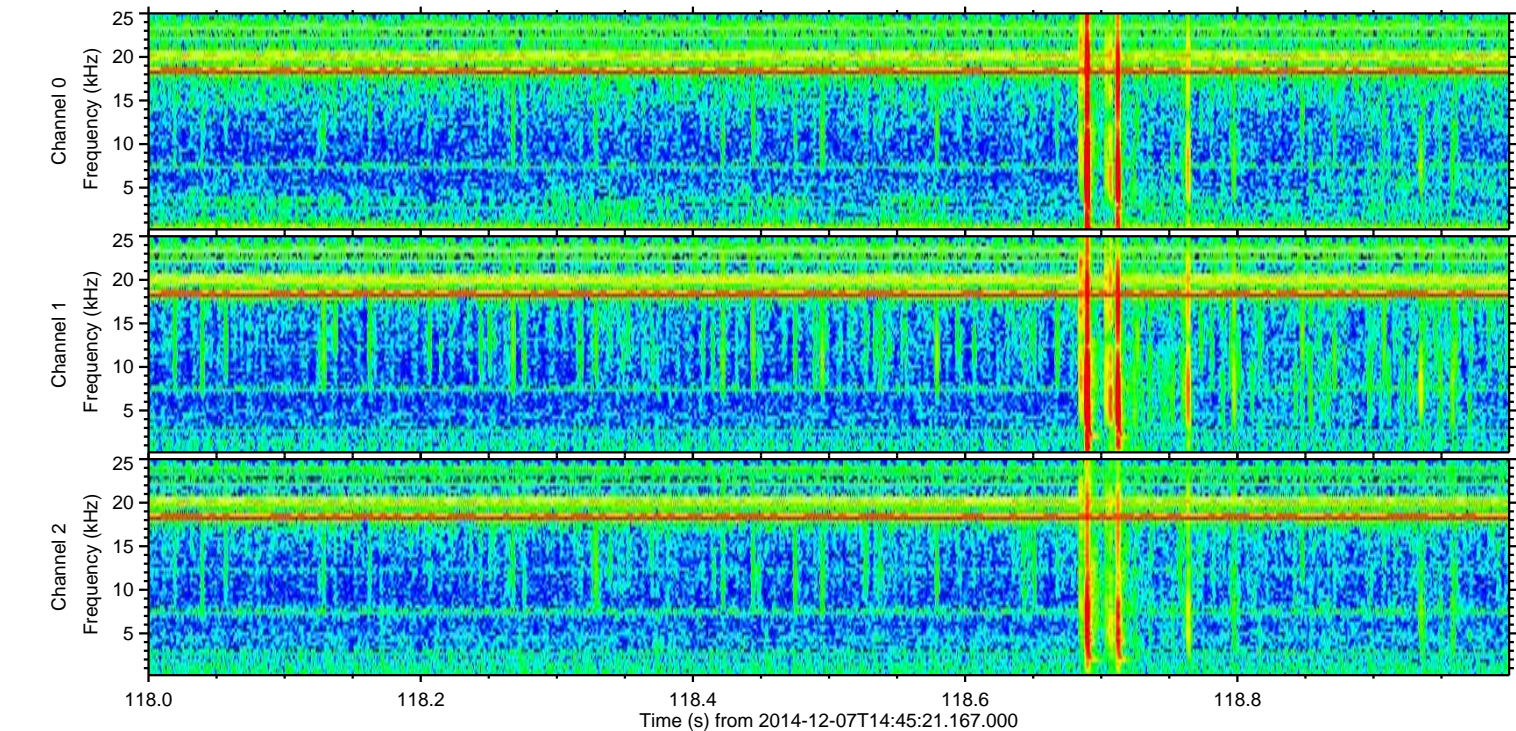
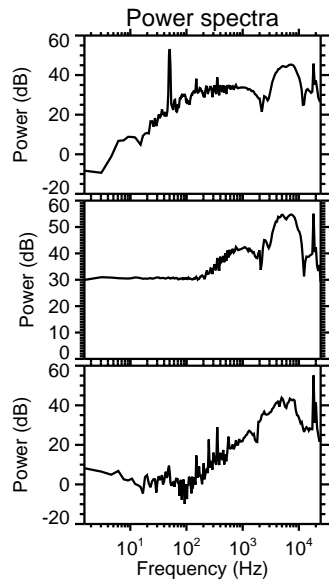
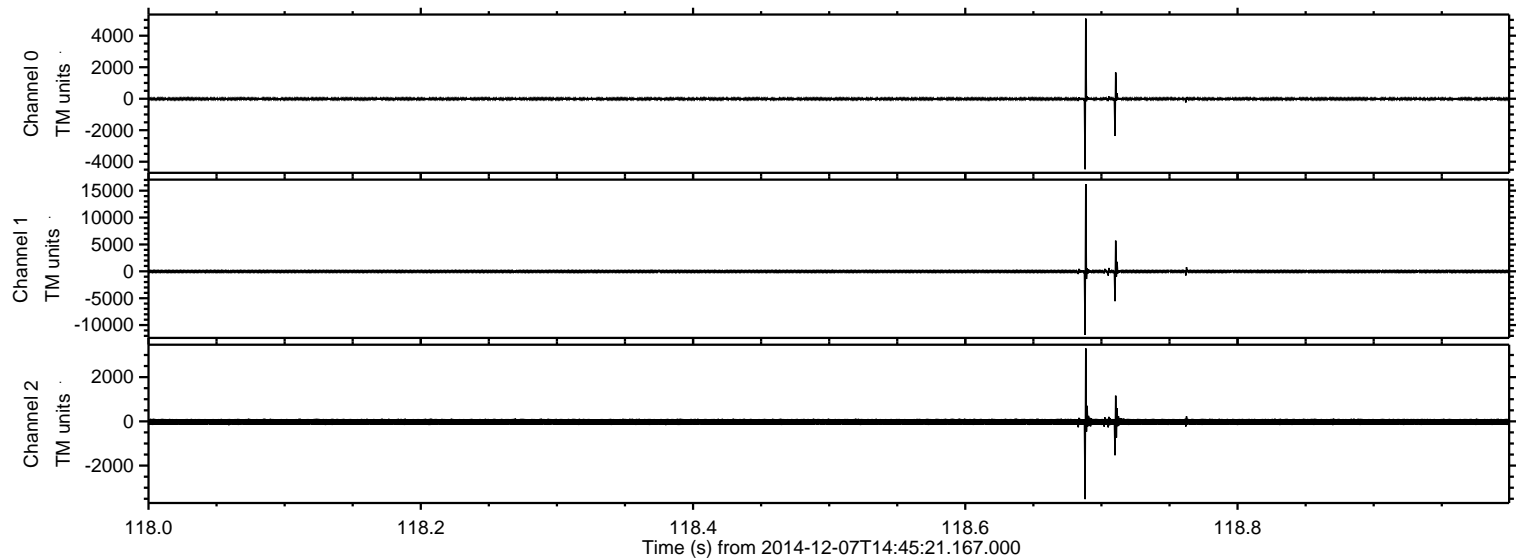
Processed Sun Dec 7 15:52:57 2014 by ELM ver.2012-10-06 from 001\_\_elm20141207\_144520\_\_dat00.bin





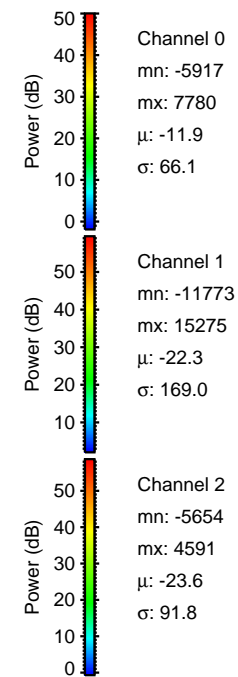
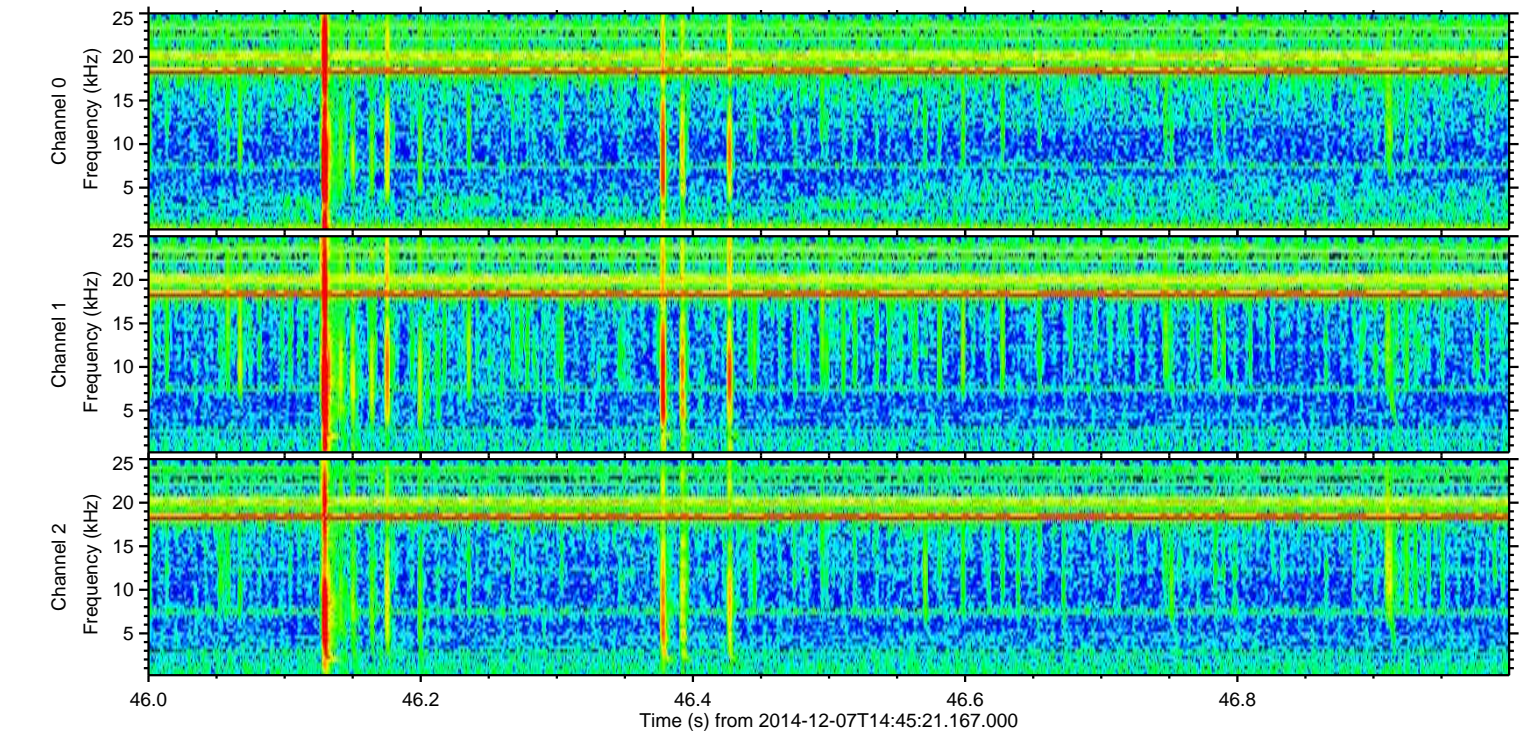
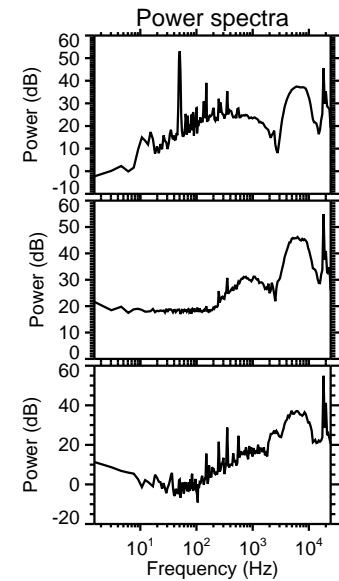
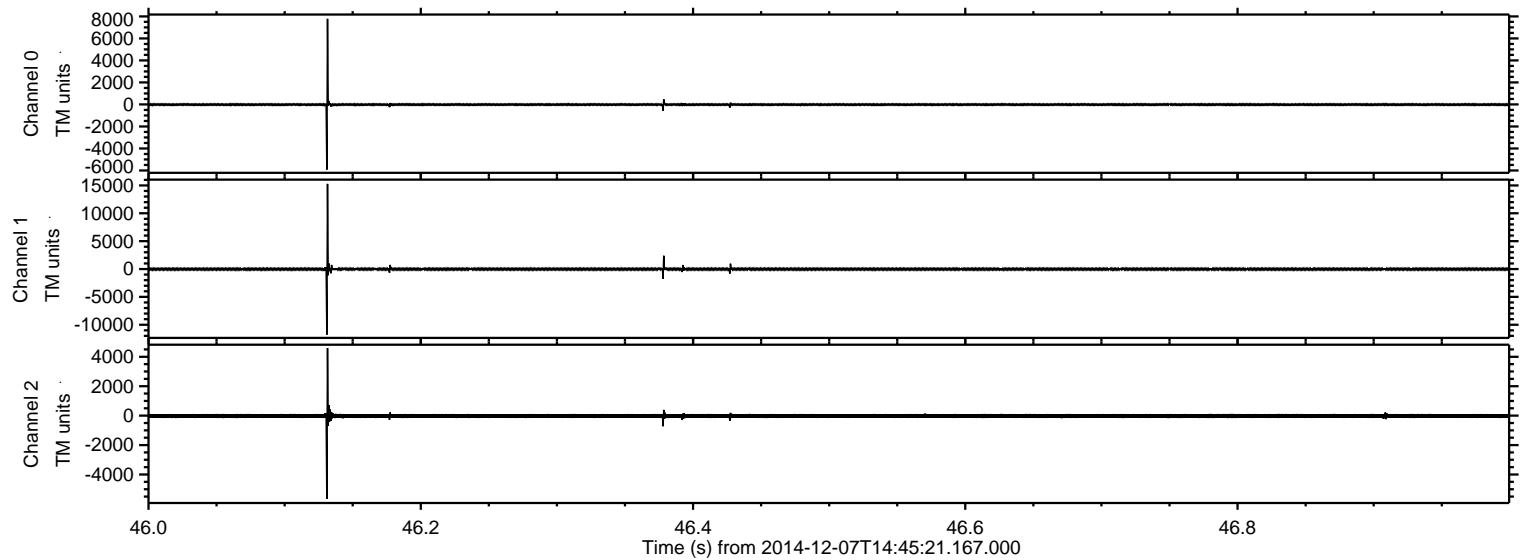
ELMAVAN 3D WAVEFORMS (Measured data sampled at 50 kHz) 49750 packets of 144 samples from 2014-12-07T14:45:21.167.000. Part 119/144

Processed Sun Dec 7 15:52:58 2014 by ELM ver.2012-10-06 from 001\_\_elm20141207\_144520\_\_dat00.bin





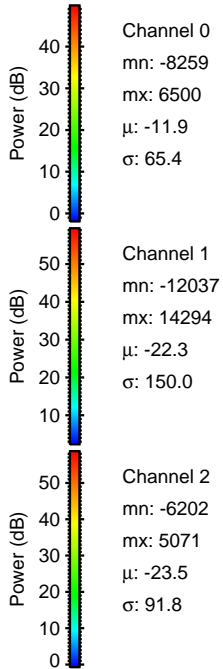
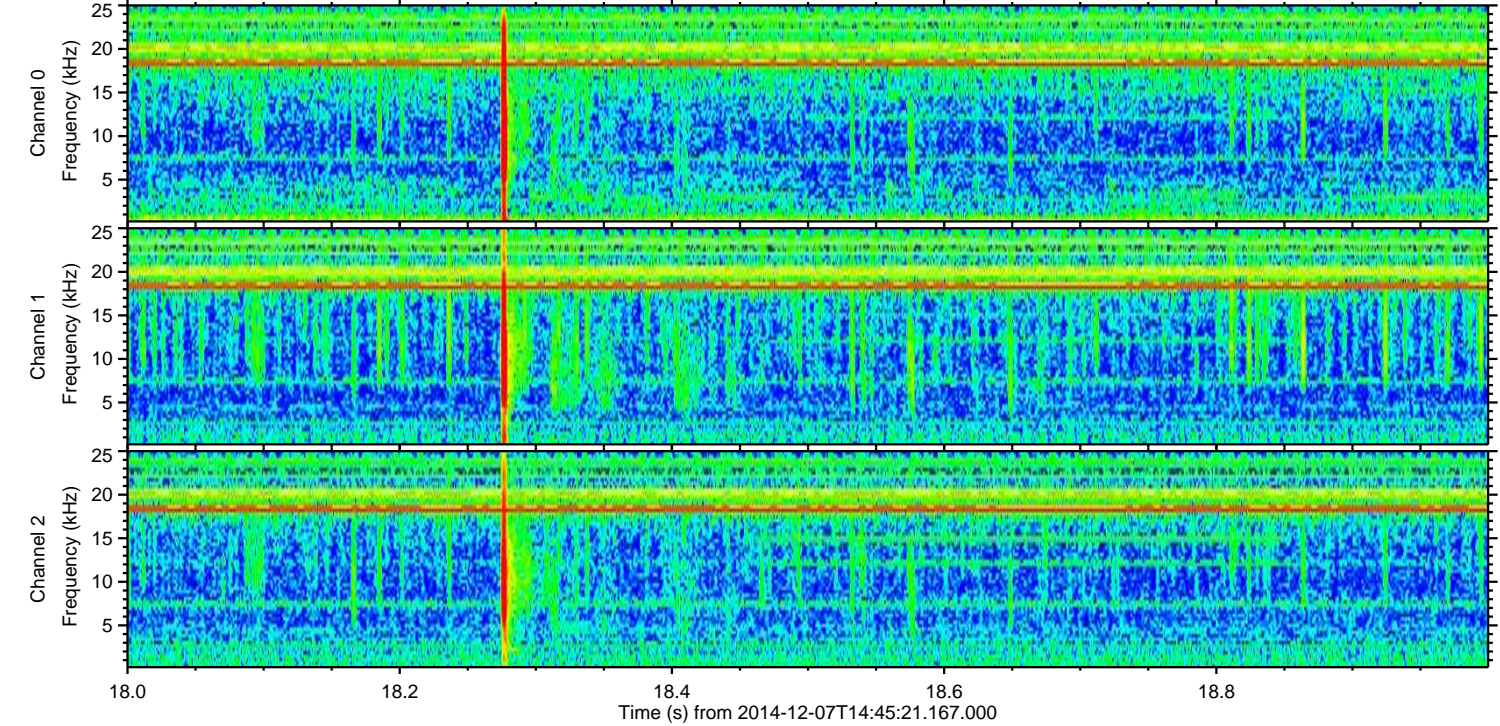
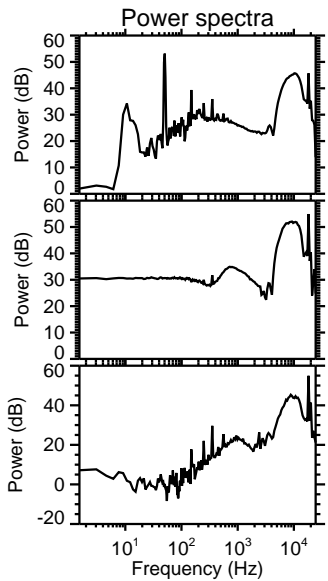
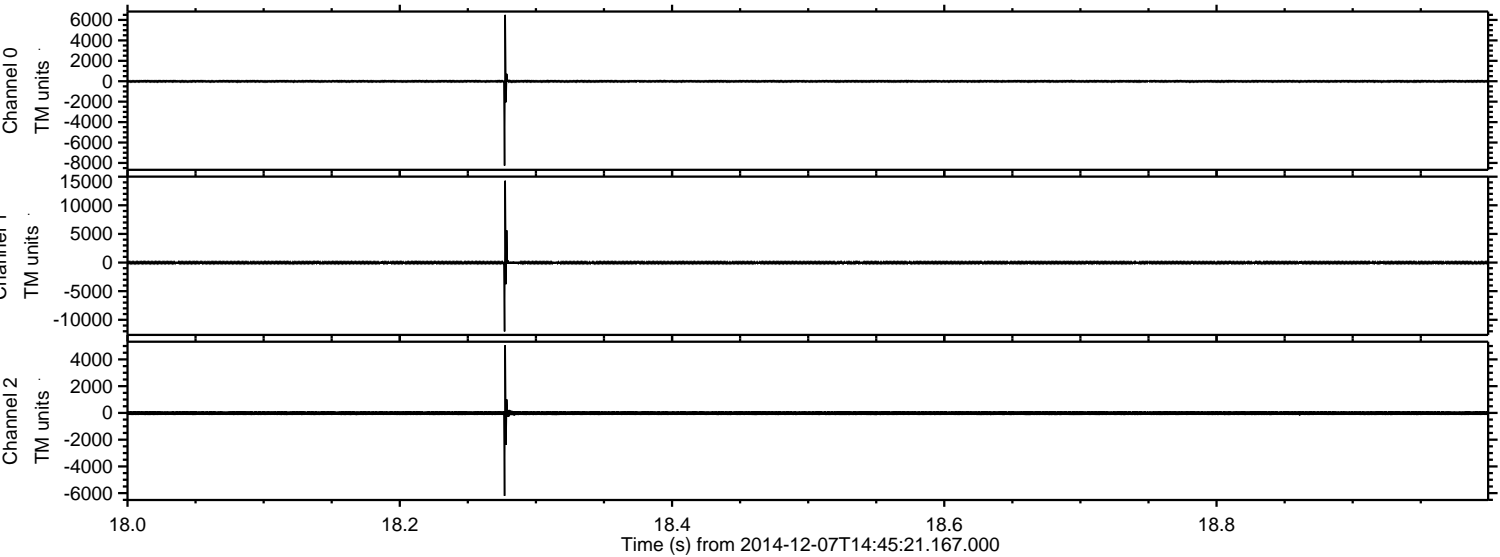
Processed Sun Dec 7 15:52:59 2014 by ELM ver.2012-10-06 from 001\_\_elm20141207\_144520\_\_dat00.bin





ELMAVAN 3D WAVEFORMS (Measured data sampled at 50 kHz) 49750 packets of 144 samples from 2014-12-07T14:45:21.167.000. Part 19/144

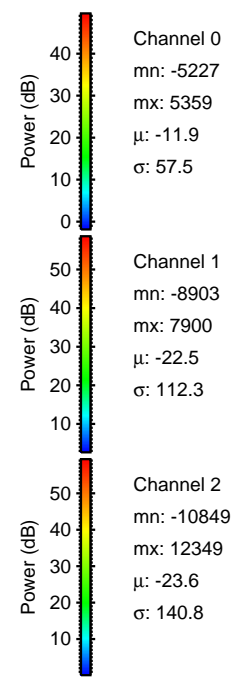
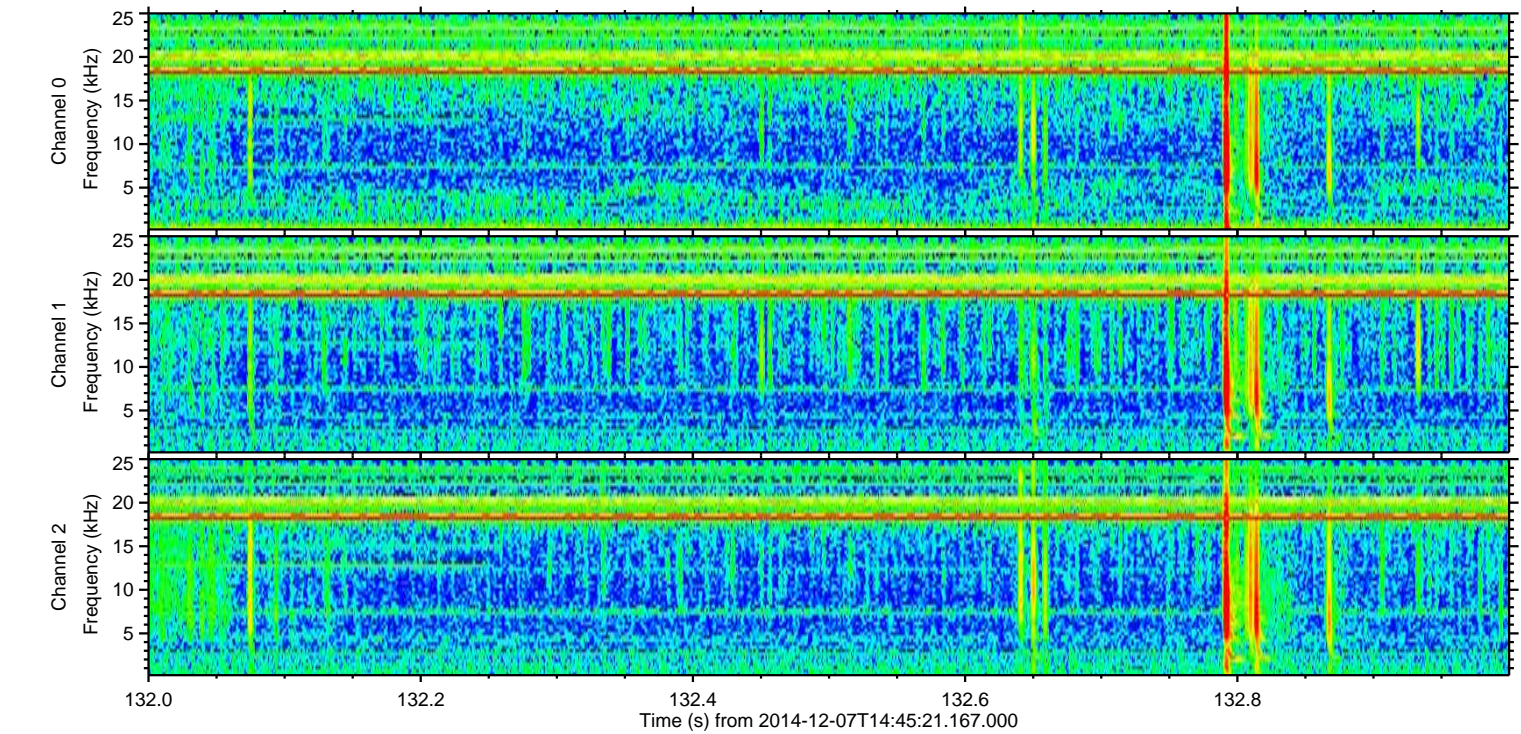
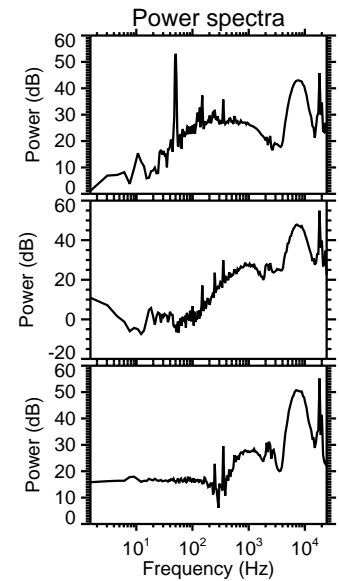
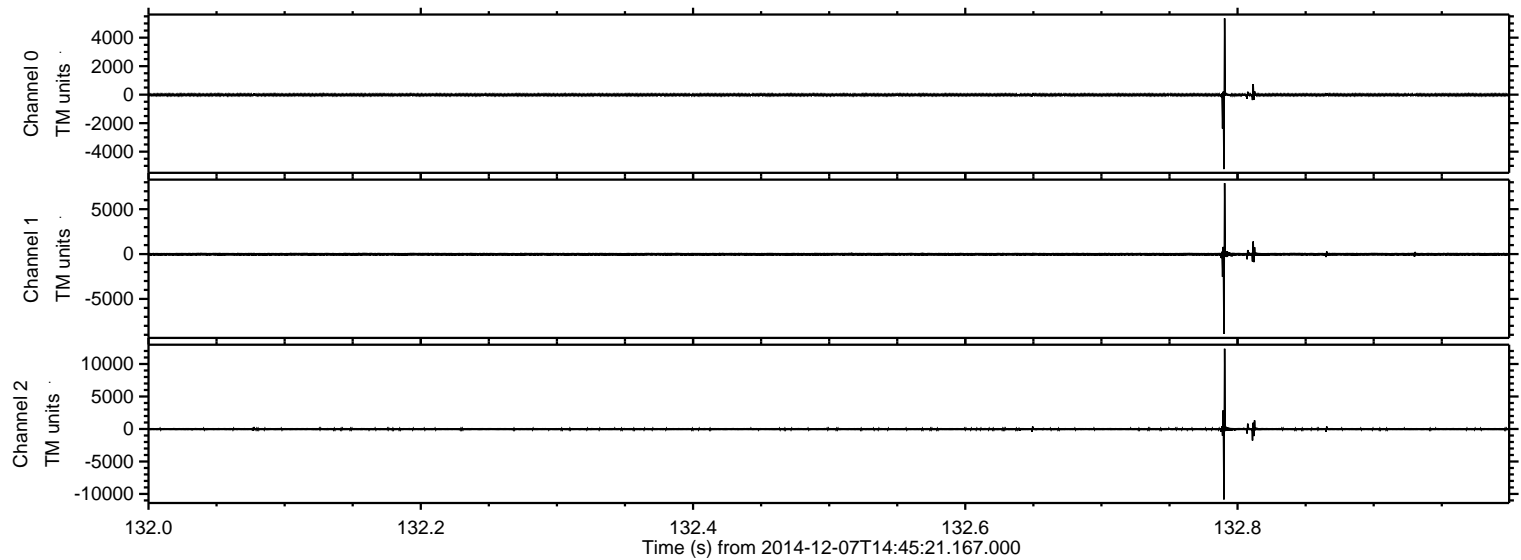
Processed Sun Dec 7 15:53:00 2014 by ELM ver.2012-10-06 from 001\_\_elm20141207\_144520\_\_dat00.bin





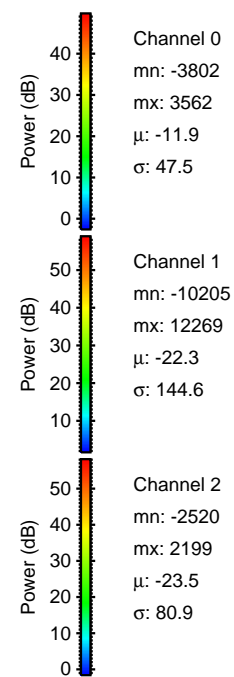
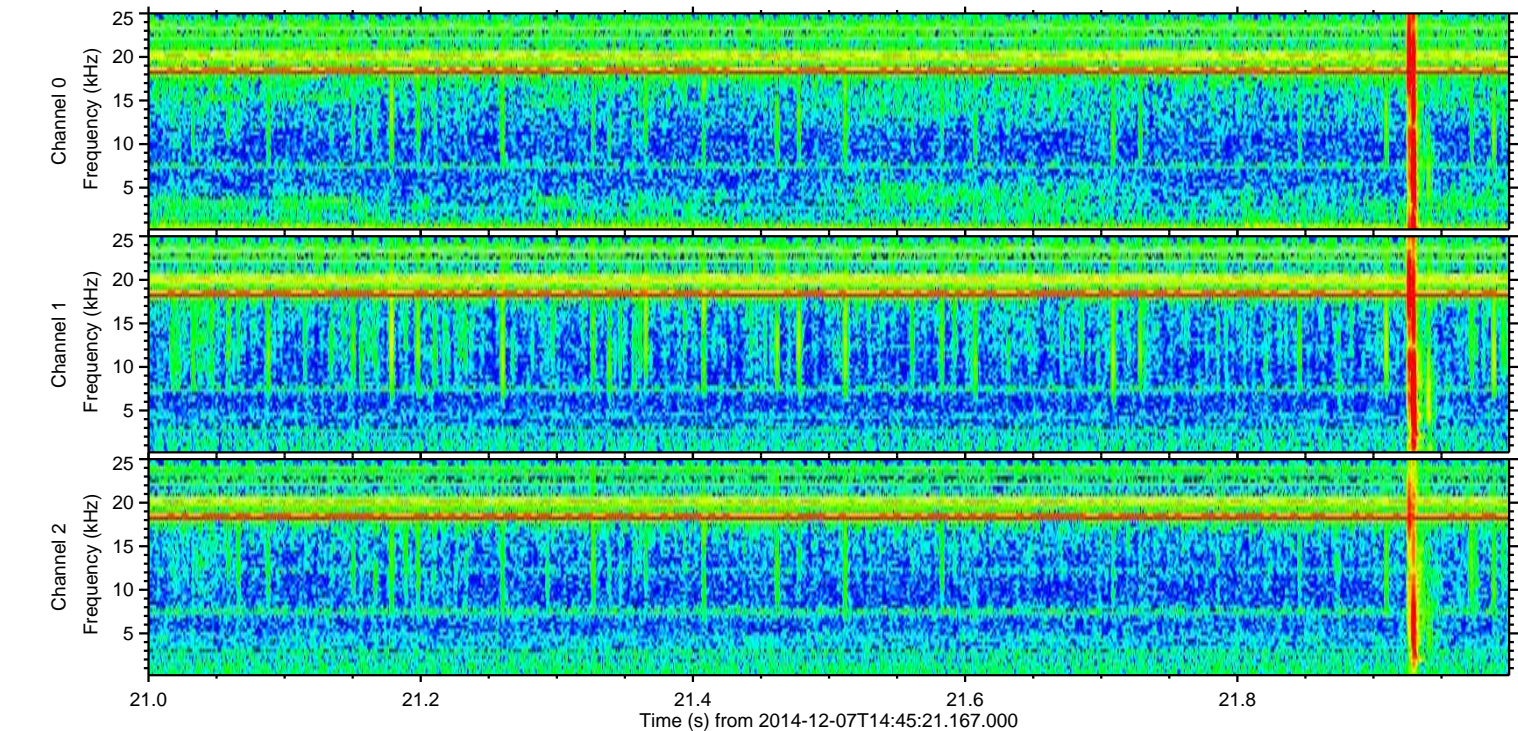
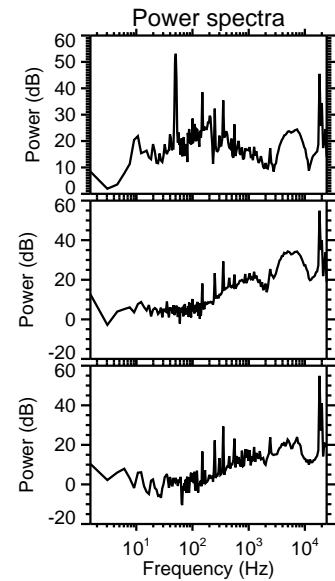
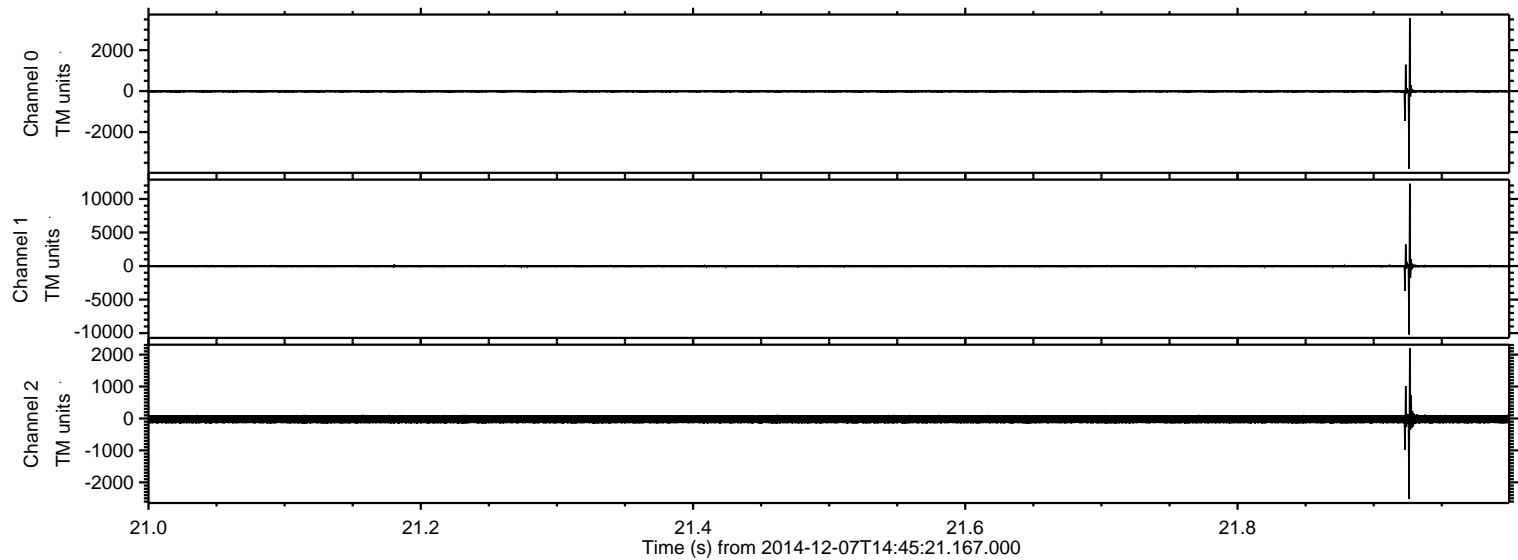
ELMAVAN 3D WAVEFORMS (Measured data sampled at 50 kHz) 49750 packets of 144 samples from 2014-12-07T14:45:21.167.000. Part 133/144

Processed Sun Dec 7 15:53:00 2014 by ELM ver.2012-10-06 from 001\_\_elm20141207\_144520\_\_dat00.bin



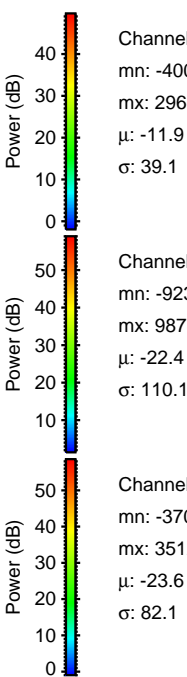
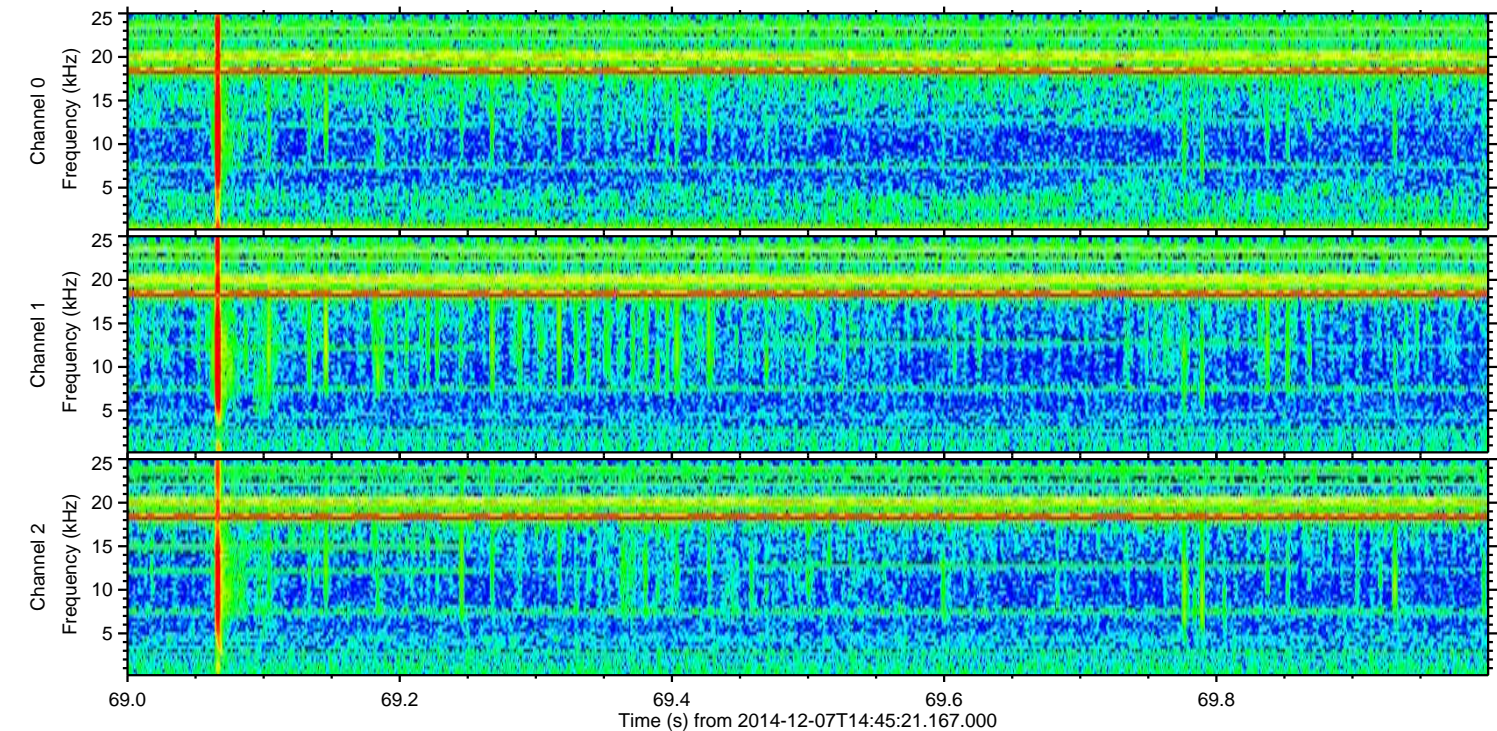
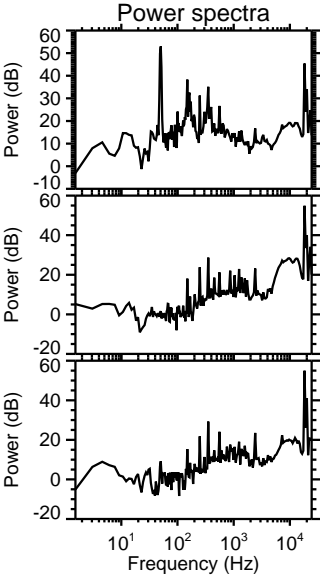
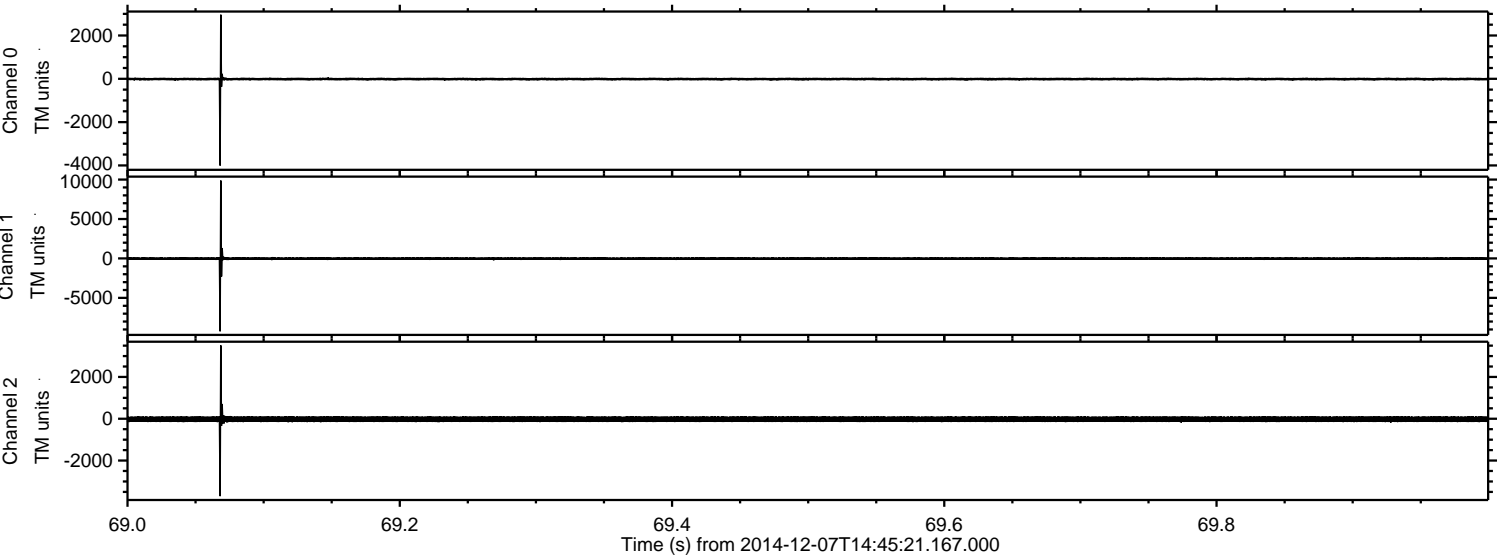


Processed Sun Dec 7 15:53:01 2014 by ELM ver.2012-10-06 from 001\_\_elm20141207\_144520\_\_dat00.bin



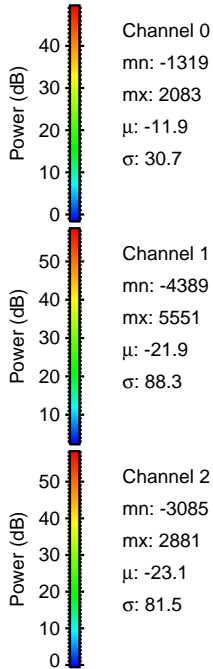
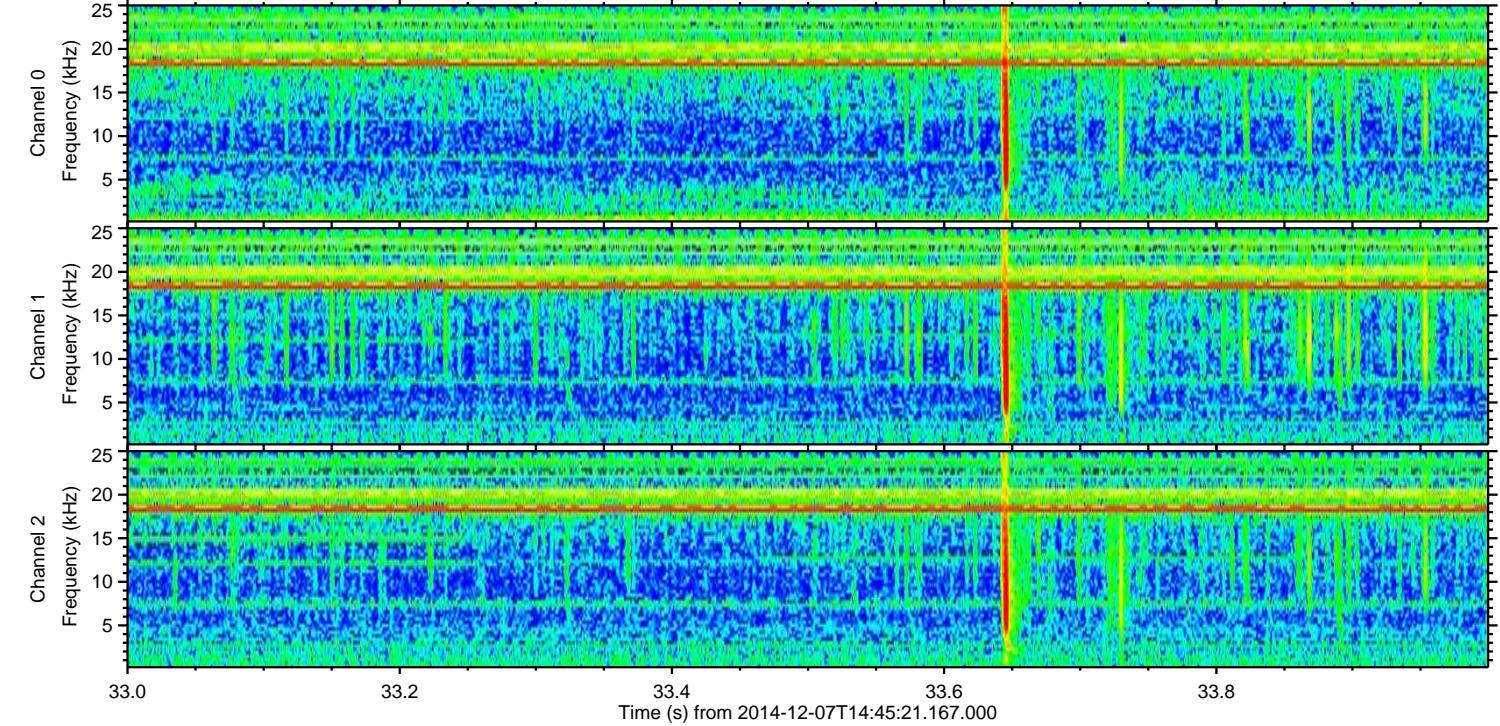
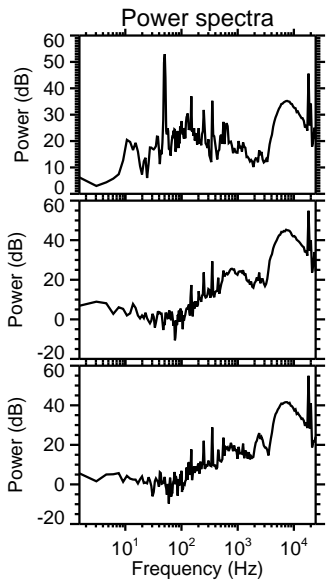
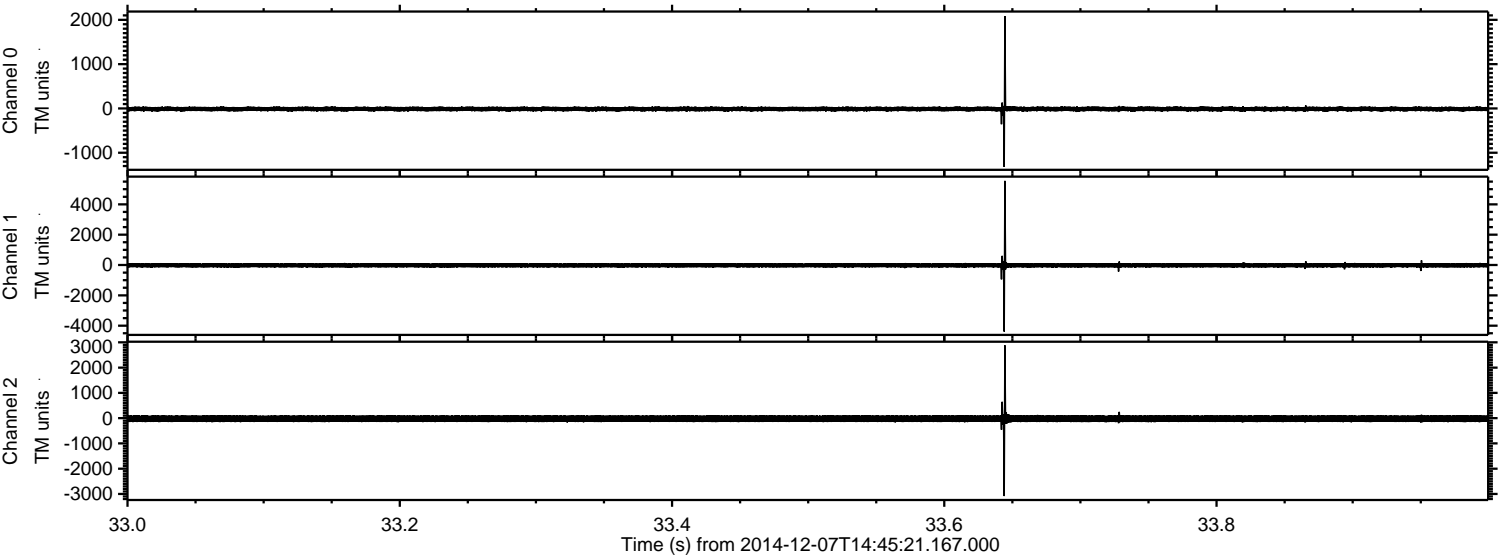


Processed Sun Dec 7 15:53:02 2014 by ELM ver.2012-10-06 from 001\_\_elm20141207\_144520\_\_dat00.bin





Processed Sun Dec 7 15:53:03 2014 by ELM ver.2012-10-06 from 001\_\_elm20141207\_144520\_\_dat00.bin



Channel 0  
mn: -1319  
mx: 2083  
 $\mu$ : -11.9  
 $\sigma$ : 30.7

Channel 1  
mn: -4389  
mx: 5551  
 $\mu$ : -21.9  
 $\sigma$ : 88.3

Channel 2  
mn: -3085  
mx: 2881  
 $\mu$ : -23.1  
 $\sigma$ : 81.5



Processed Sun Dec 7 15:53:04 2014 by ELM ver.2012-10-06 from 001\_\_elm20141207\_144520\_\_dat00.bin

