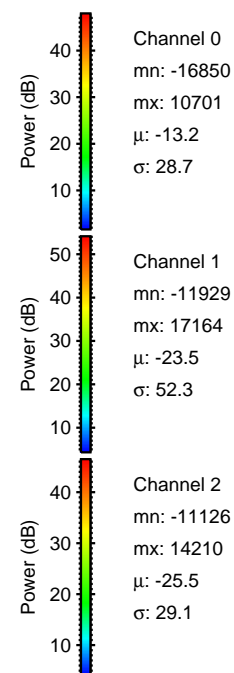
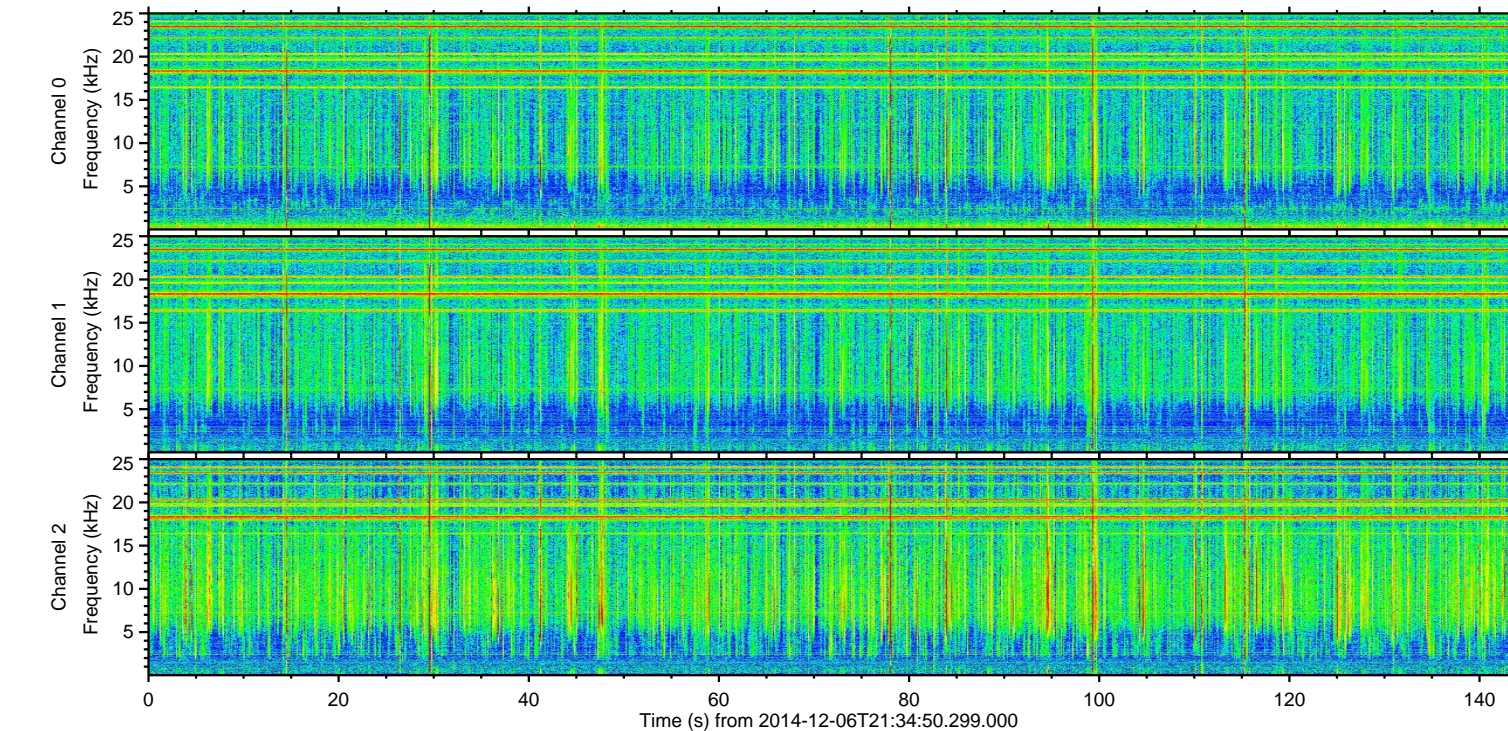
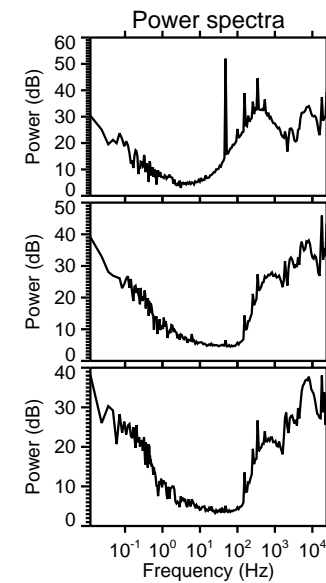
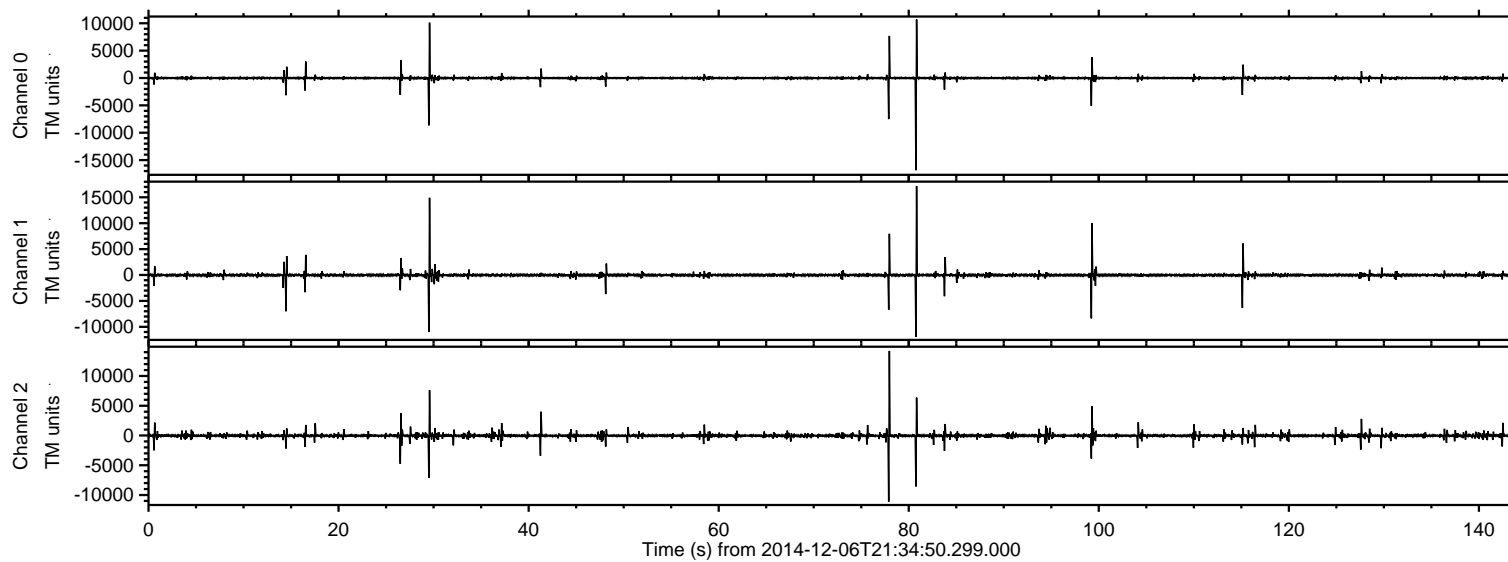


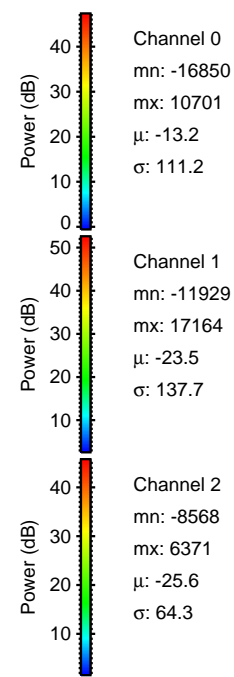
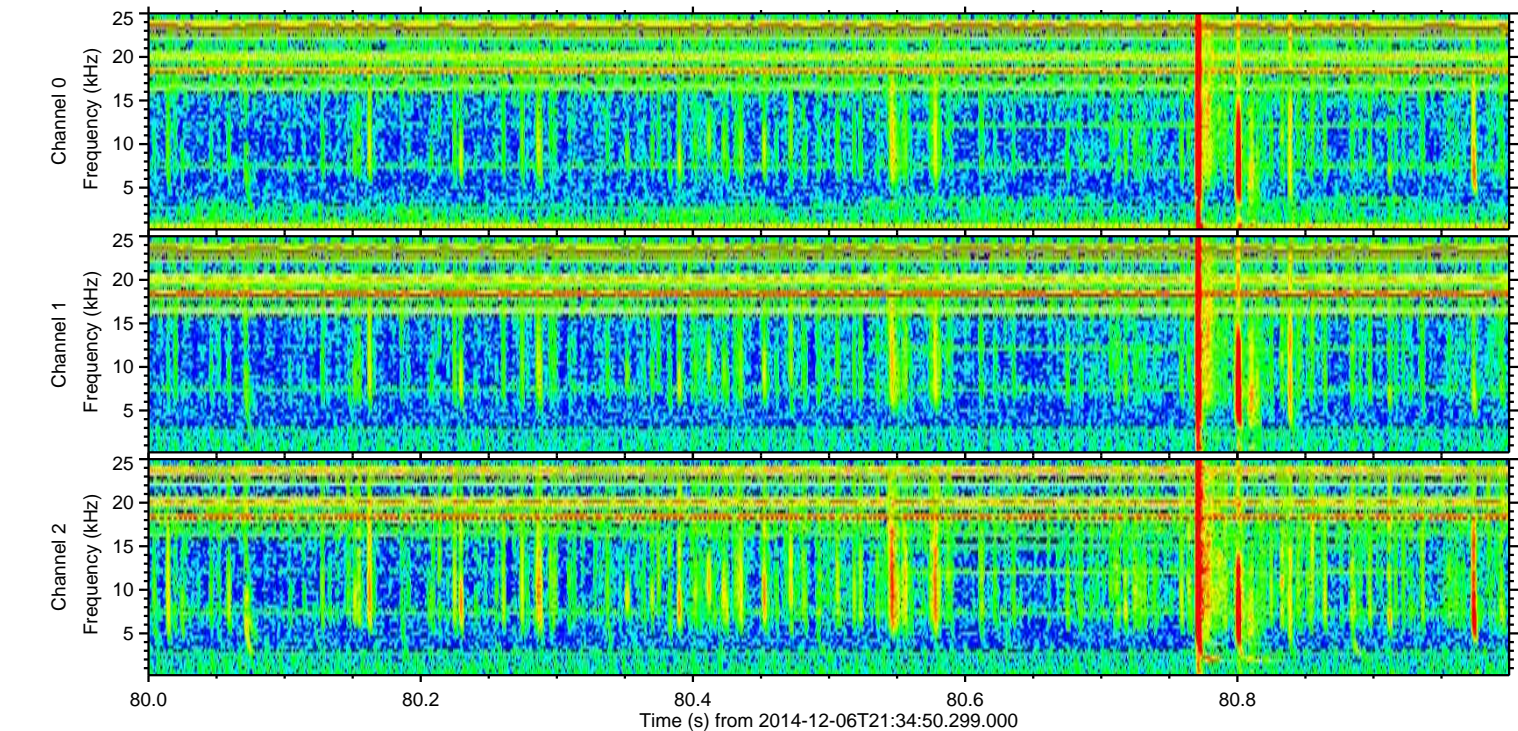
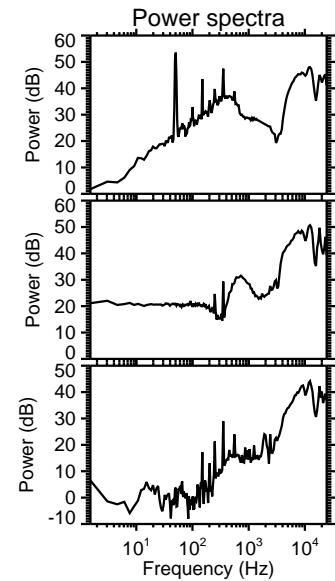
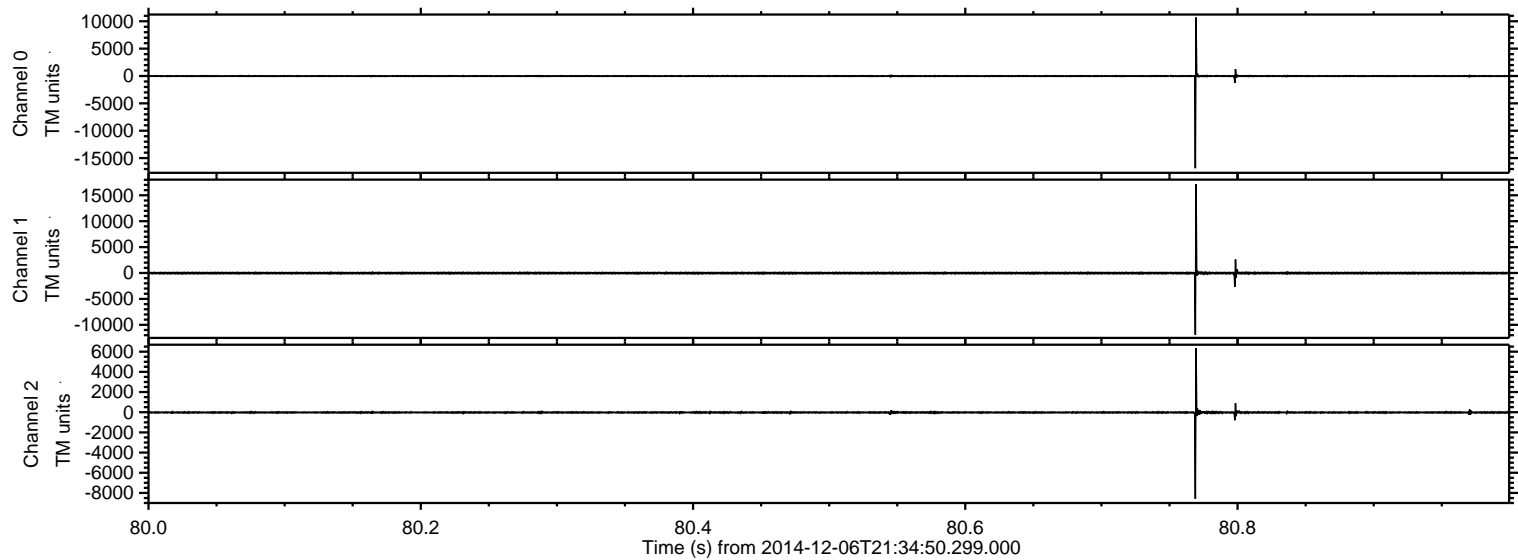
ELMAVAN 3D WAVEFORMS (Measured data sampled at 50 kHz) 49716 packets of 144 samples from 2014-12-06T21:34:50.299.000.

Processed Sat Dec 6 22:49:42 2014 by ELM ver.2012-10-06 from 001__elm20141206_213449__dat00.bin



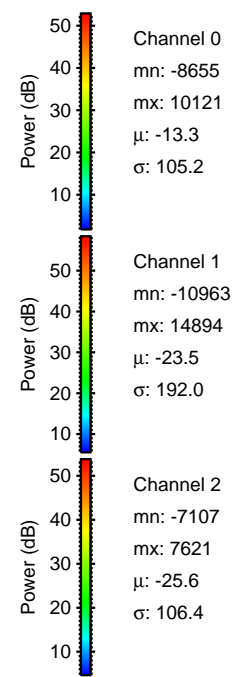
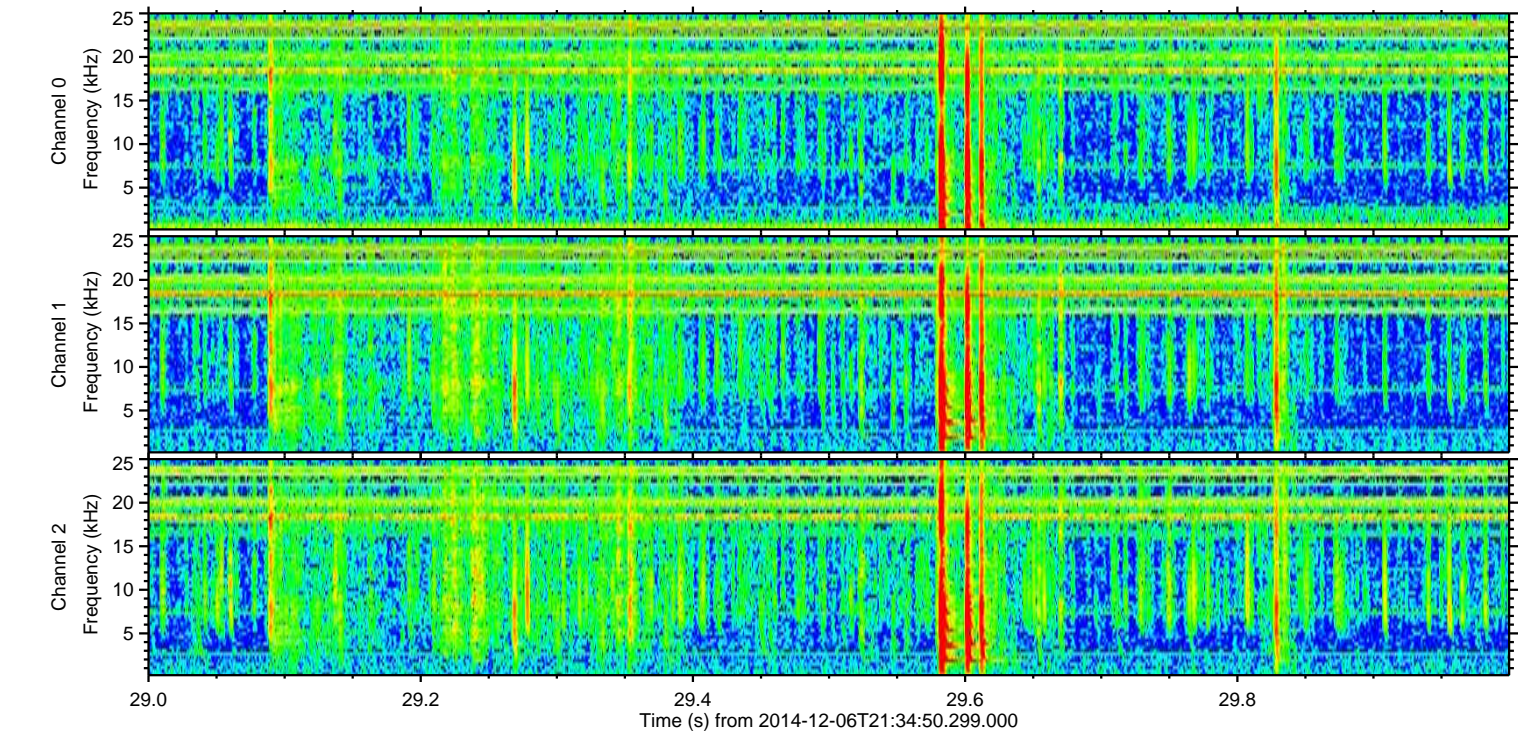
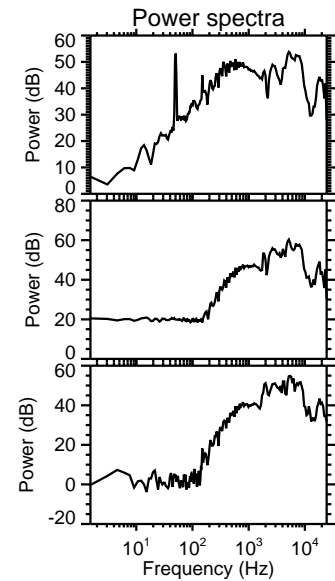
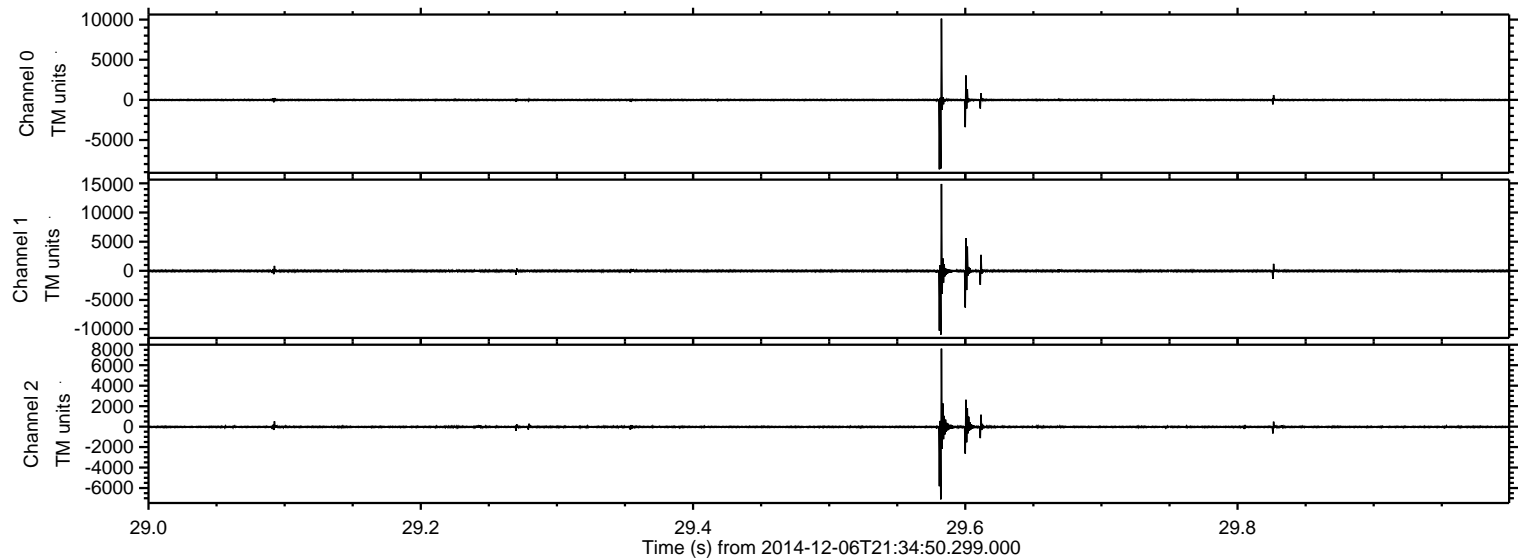
ELMAVAN 3D WAVEFORMS (Measured data sampled at 50 kHz) 49716 packets of 144 samples from 2014-12-06T21:34:50.299.000. Part 81/144

Processed Sat Dec 6 22:49:54 2014 by ELM ver.2012-10-06 from 001__elm20141206_213449__dat00.bin



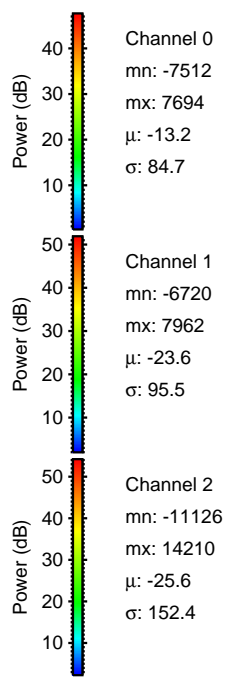
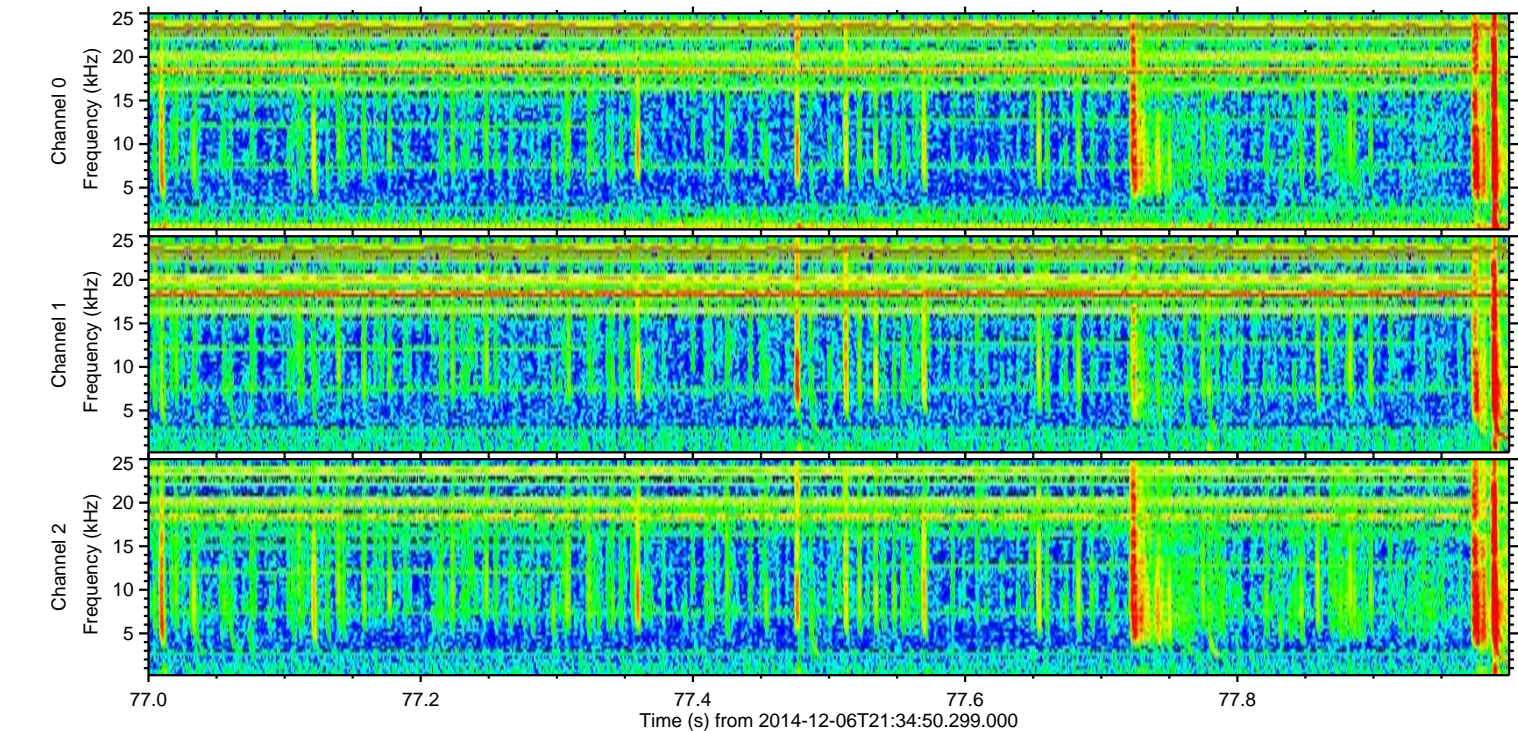
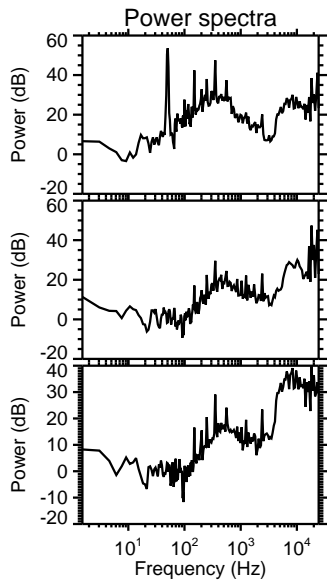
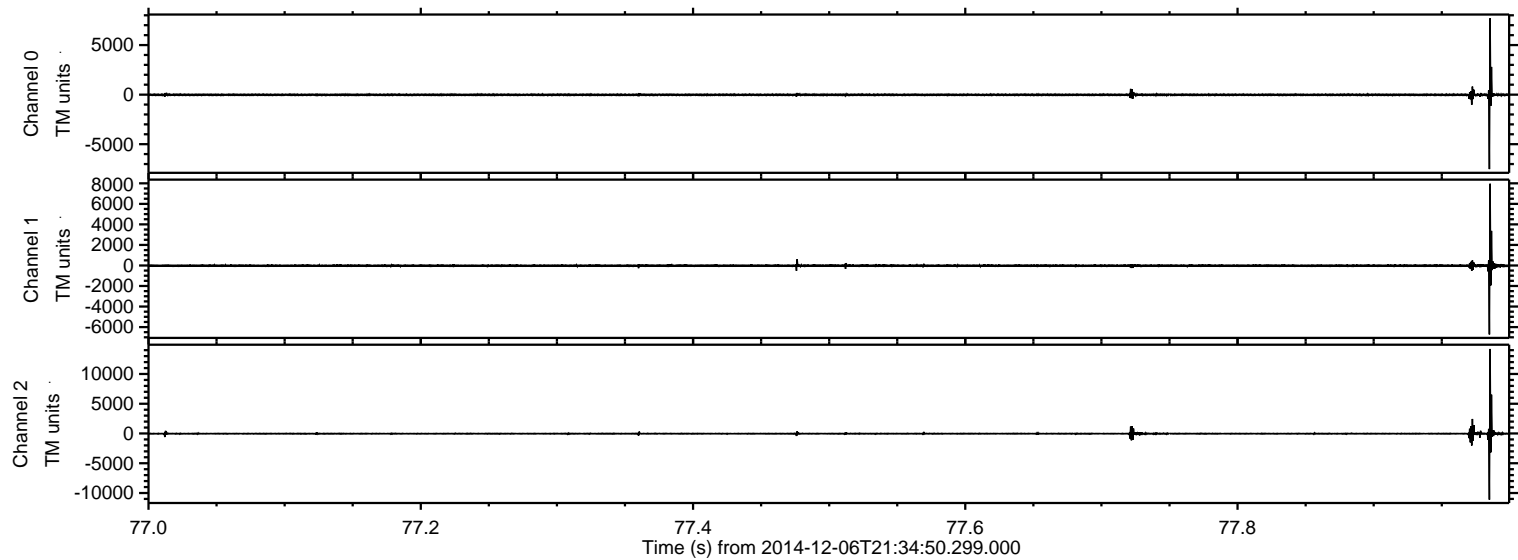
ELMAVAN 3D WAVEFORMS (Measured data sampled at 50 kHz) 49716 packets of 144 samples from 2014-12-06T21:34:50.299.000. Part 30/144

Processed Sat Dec 6 22:49:55 2014 by ELM ver.2012-10-06 from 001__elm20141206_213449__dat00.bin



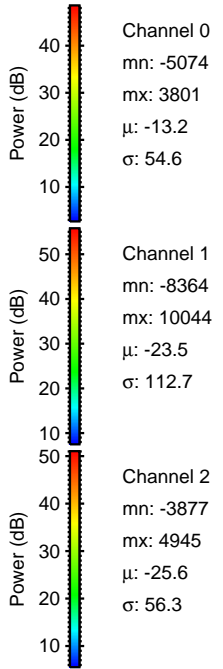
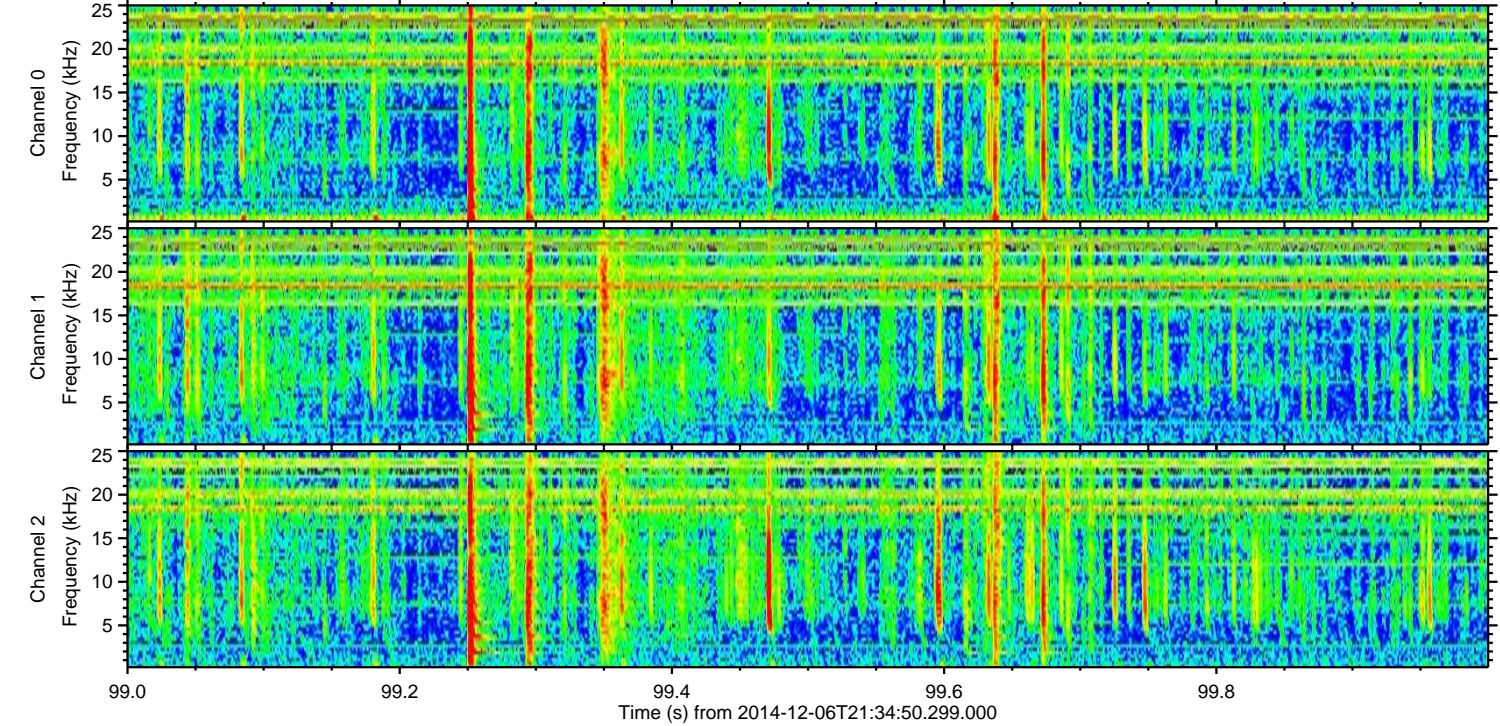
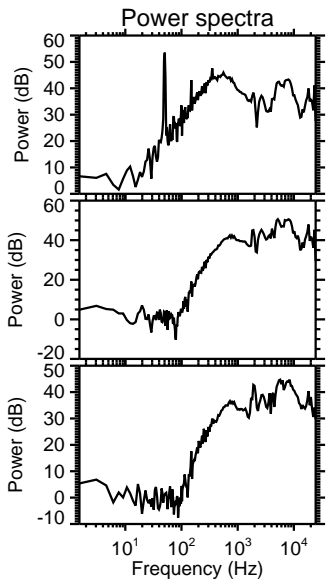
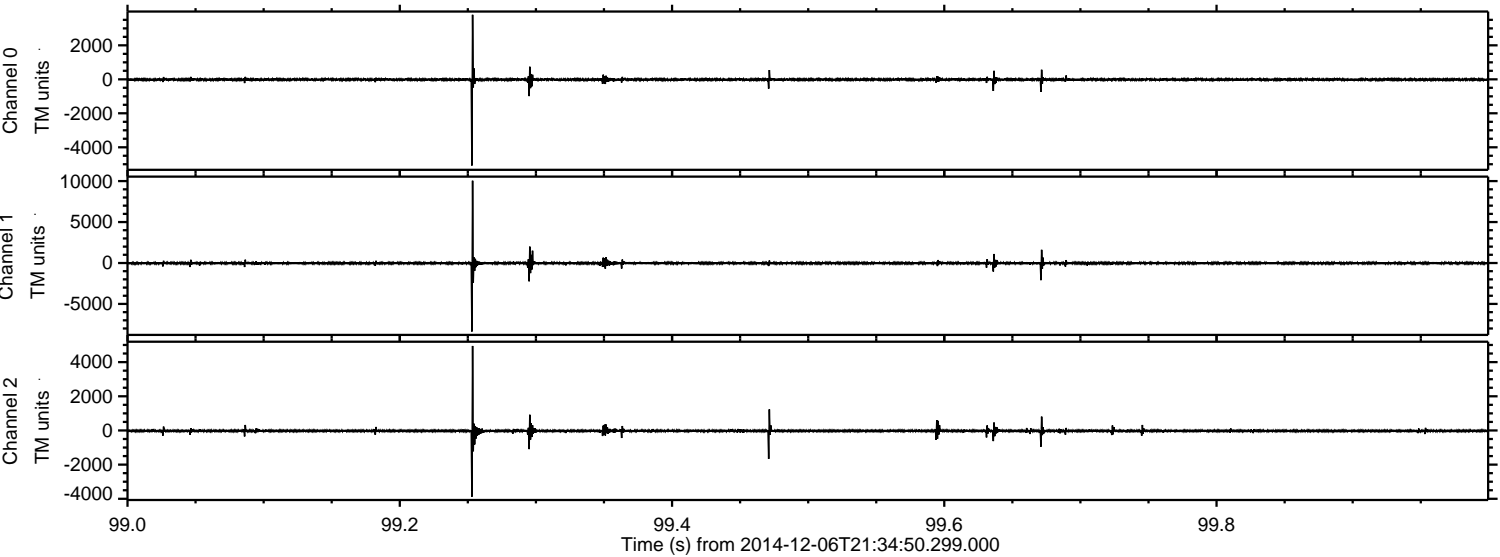
ELMAVAN 3D WAVEFORMS (Measured data sampled at 50 kHz) 49716 packets of 144 samples from 2014-12-06T21:34:50.299.000. Part 78/144

Processed Sat Dec 6 22:49:56 2014 by ELM ver.2012-10-06 from 001__elm20141206_213449__dat00.bin



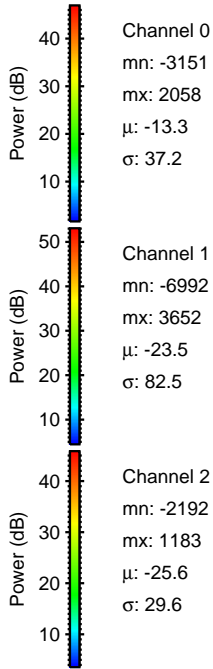
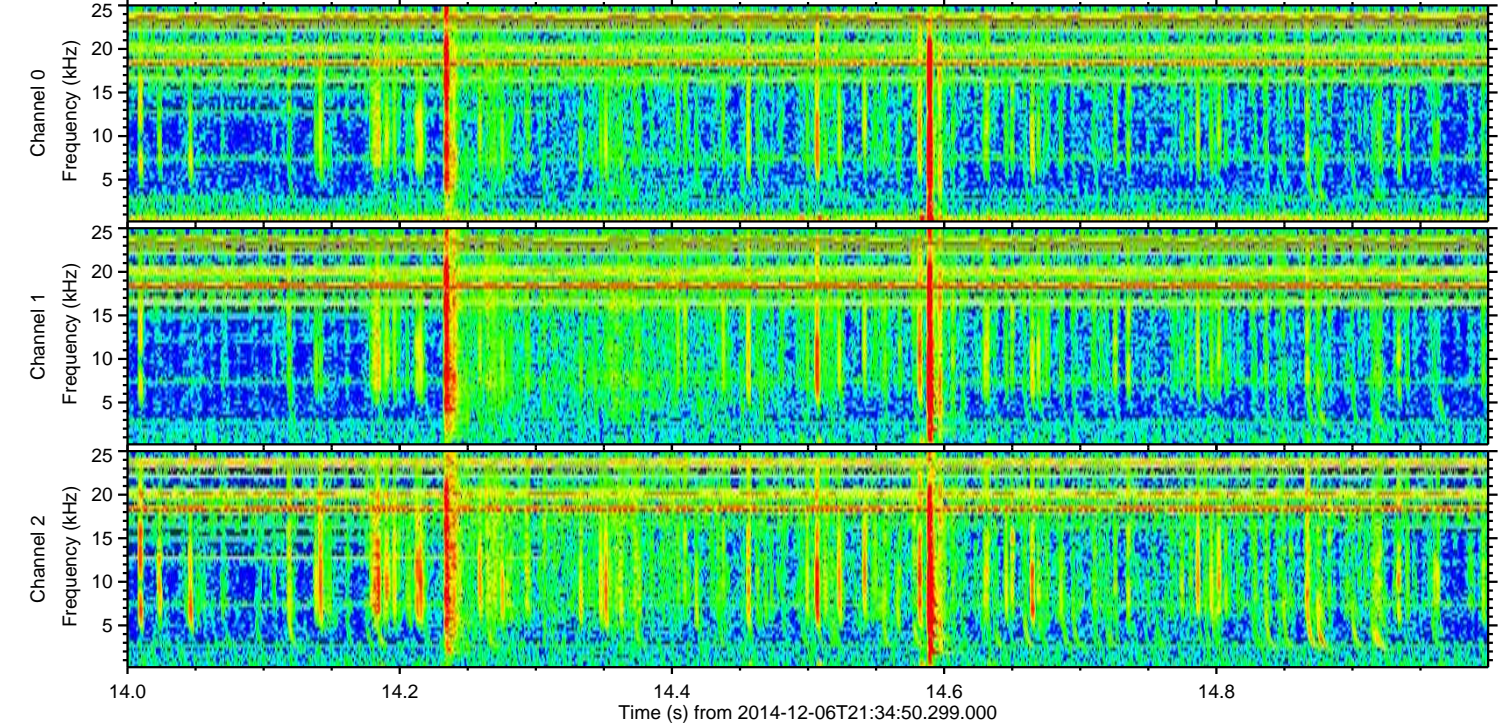
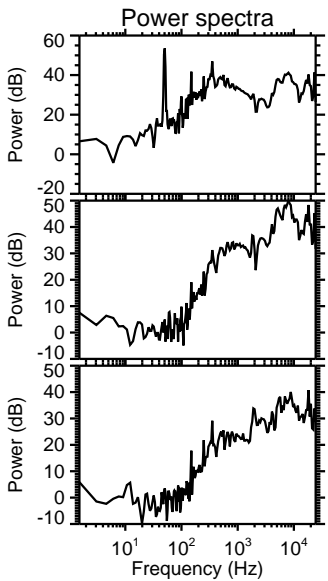
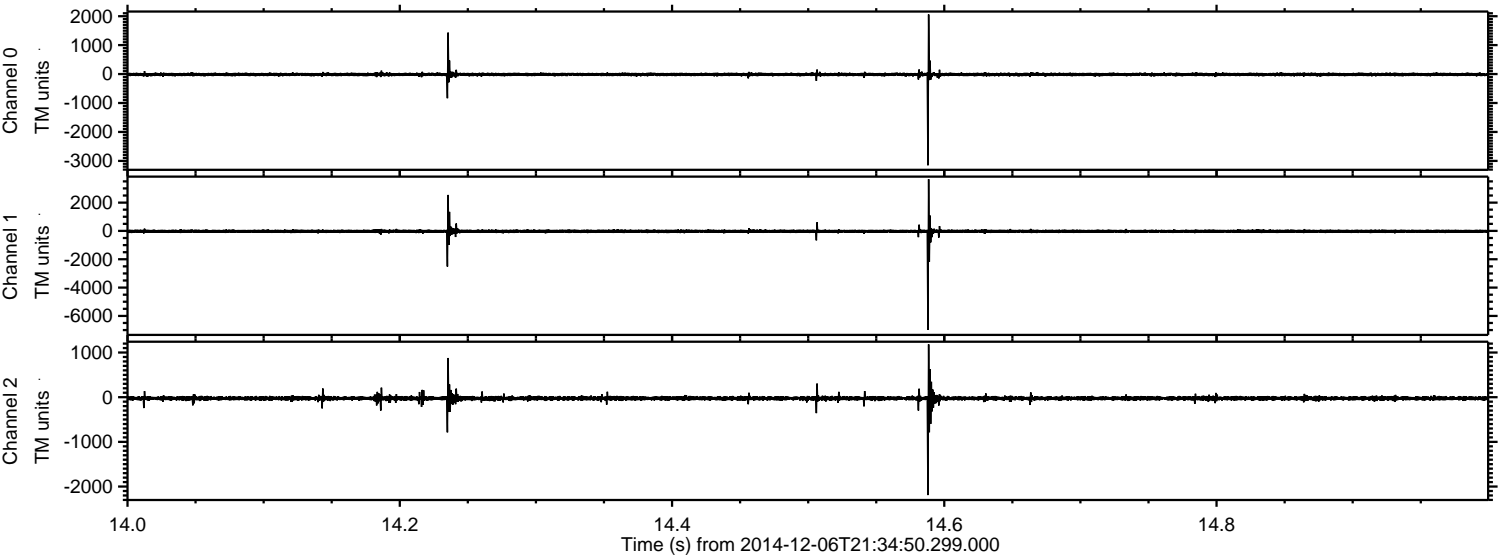
ELMAVAN 3D WAVEFORMS (Measured data sampled at 50 kHz) 49716 packets of 144 samples from 2014-12-06T21:34:50.299.000. Part 100/144

Processed Sat Dec 6 22:49:57 2014 by ELM ver.2012-10-06 from 001__elm20141206_213449__dat00.bin



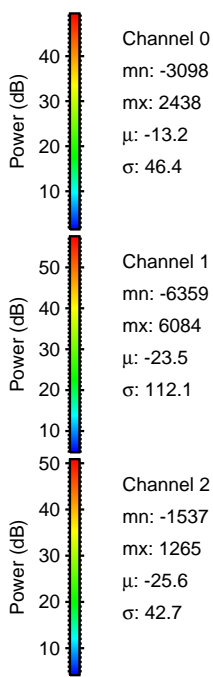
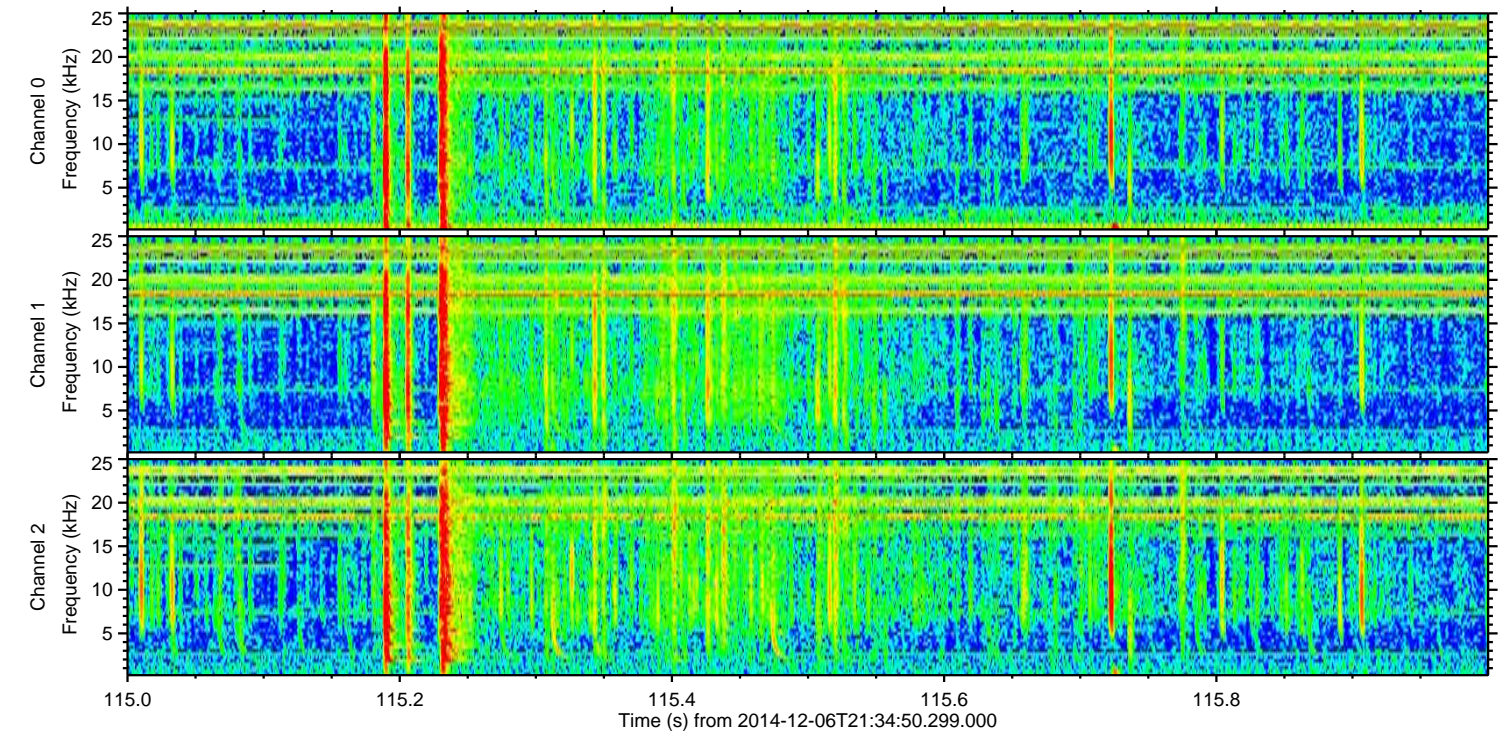
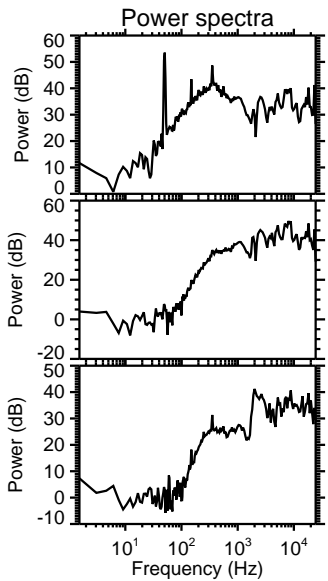
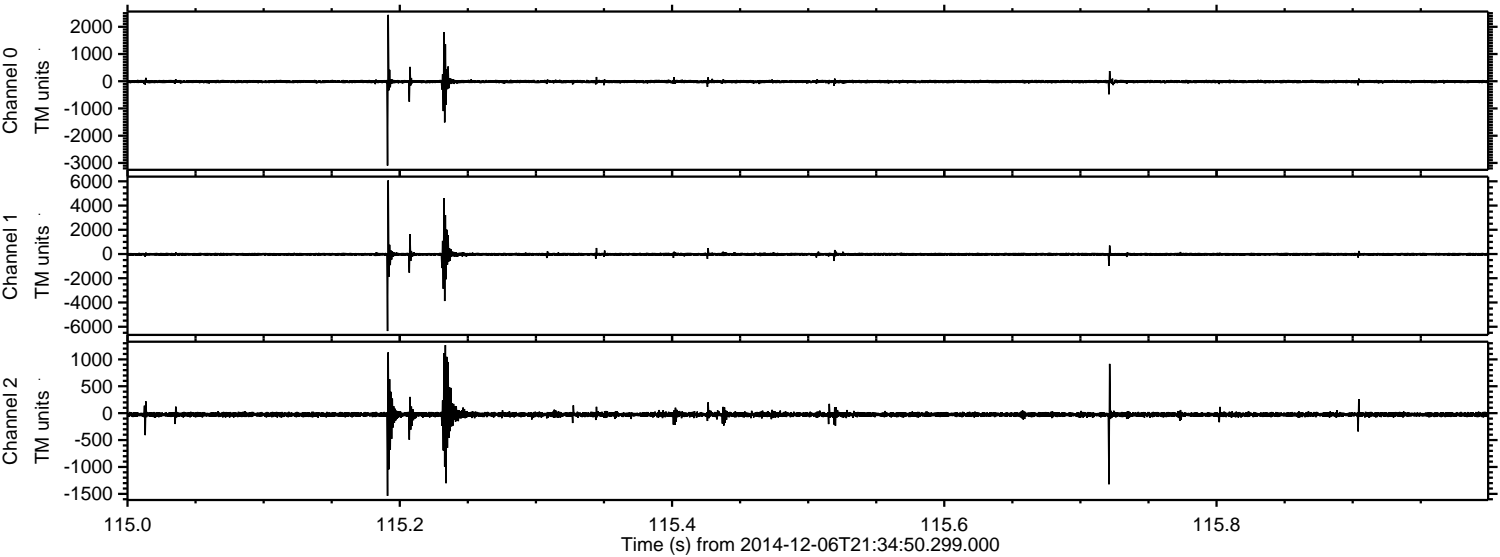
ELMAVAN 3D WAVEFORMS (Measured data sampled at 50 kHz) 49716 packets of 144 samples from 2014-12-06T21:34:50.299.000. Part 15/144

Processed Sat Dec 6 22:49:58 2014 by ELM ver.2012-10-06 from 001__elm20141206_213449__dat00.bin



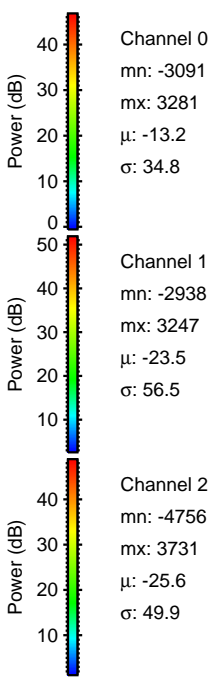
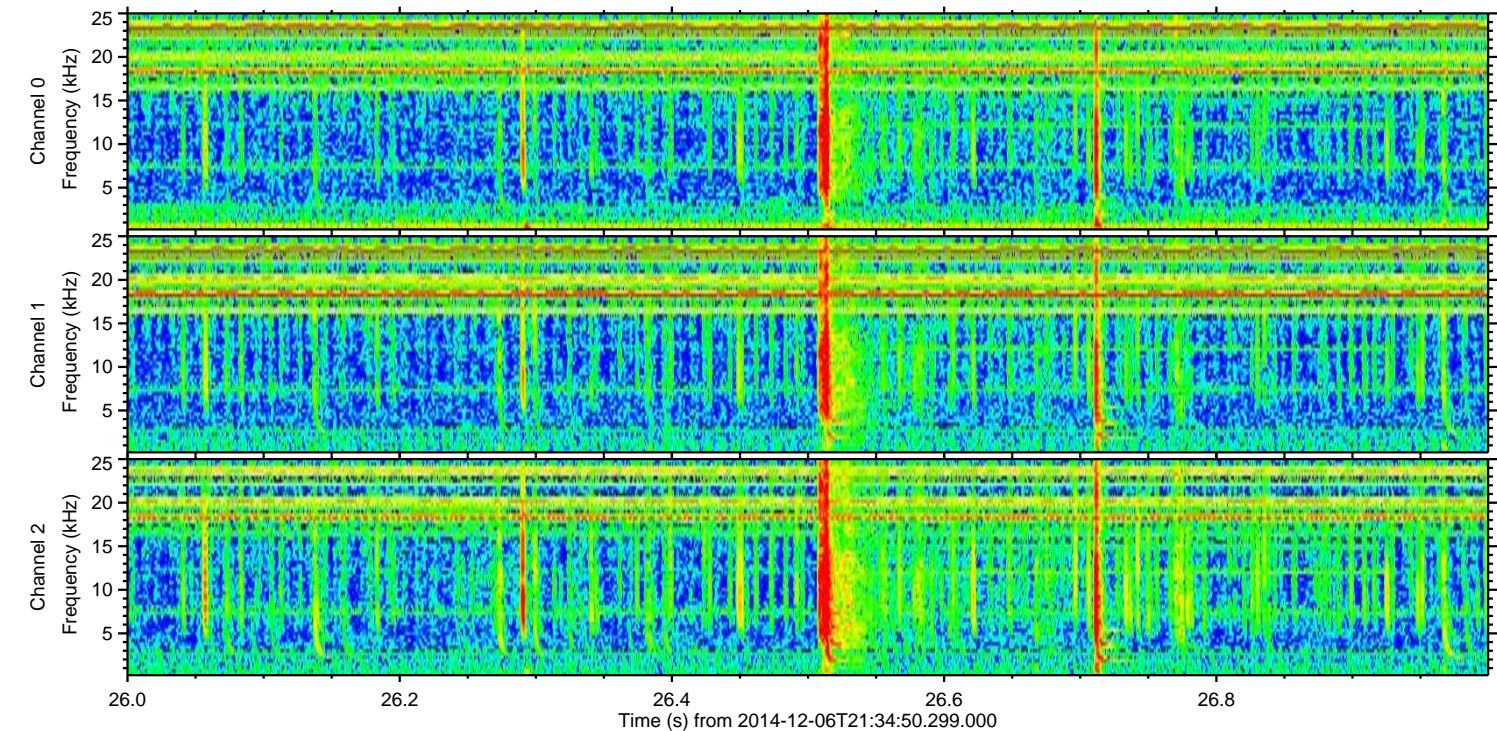
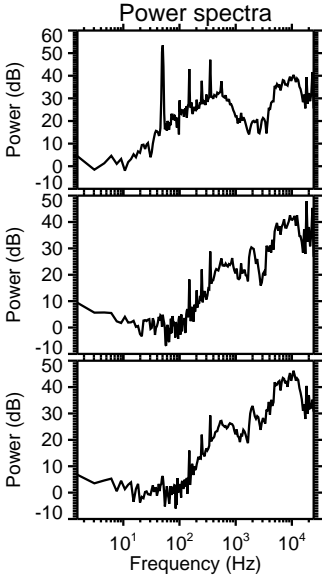
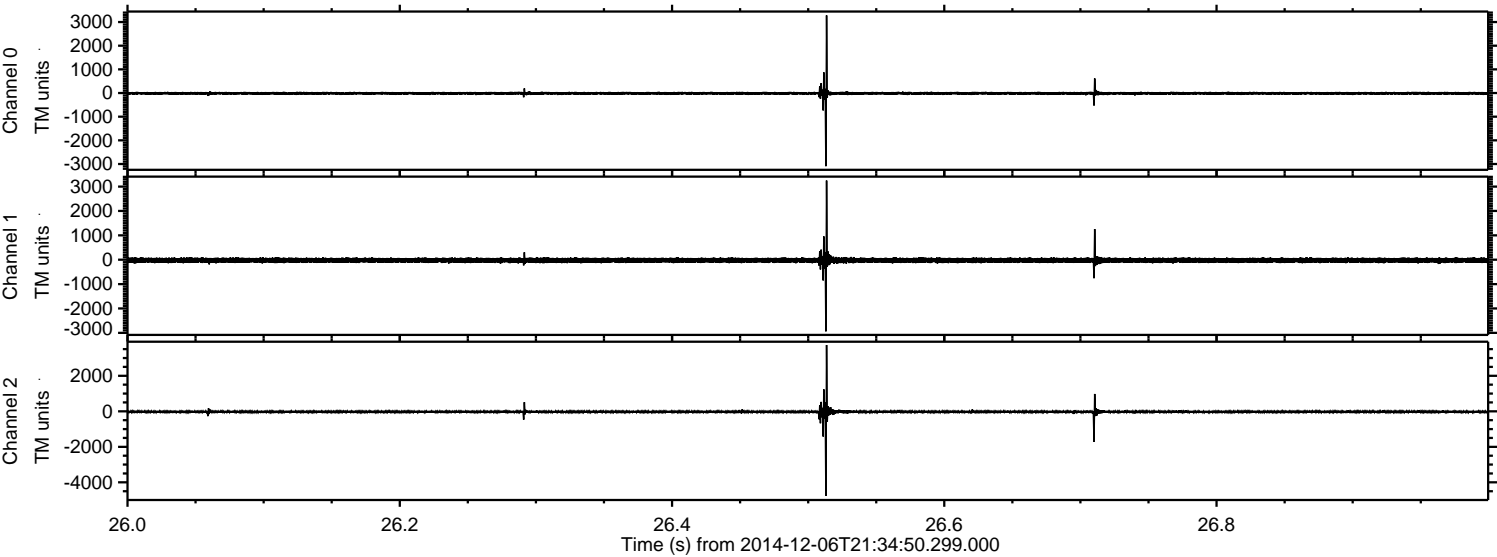
ELMAVAN 3D WAVEFORMS (Measured data sampled at 50 kHz) 49716 packets of 144 samples from 2014-12-06T21:34:50.299.000. Part 116/144

Processed Sat Dec 6 22:49:59 2014 by ELM ver.2012-10-06 from 001__elm20141206_213449__dat00.bin



ELMAVAN 3D WAVEFORMS (Measured data sampled at 50 kHz) 49716 packets of 144 samples from 2014-12-06T21:34:50.299.000. Part 27/144

Processed Sat Dec 6 22:50:00 2014 by ELM ver.2012-10-06 from 001__elm20141206_213449__dat00.bin



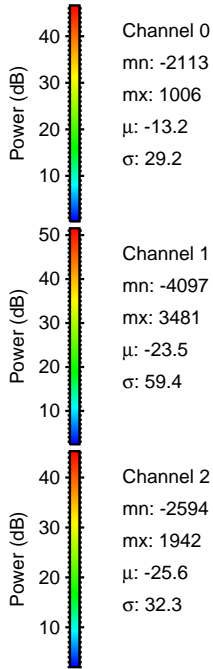
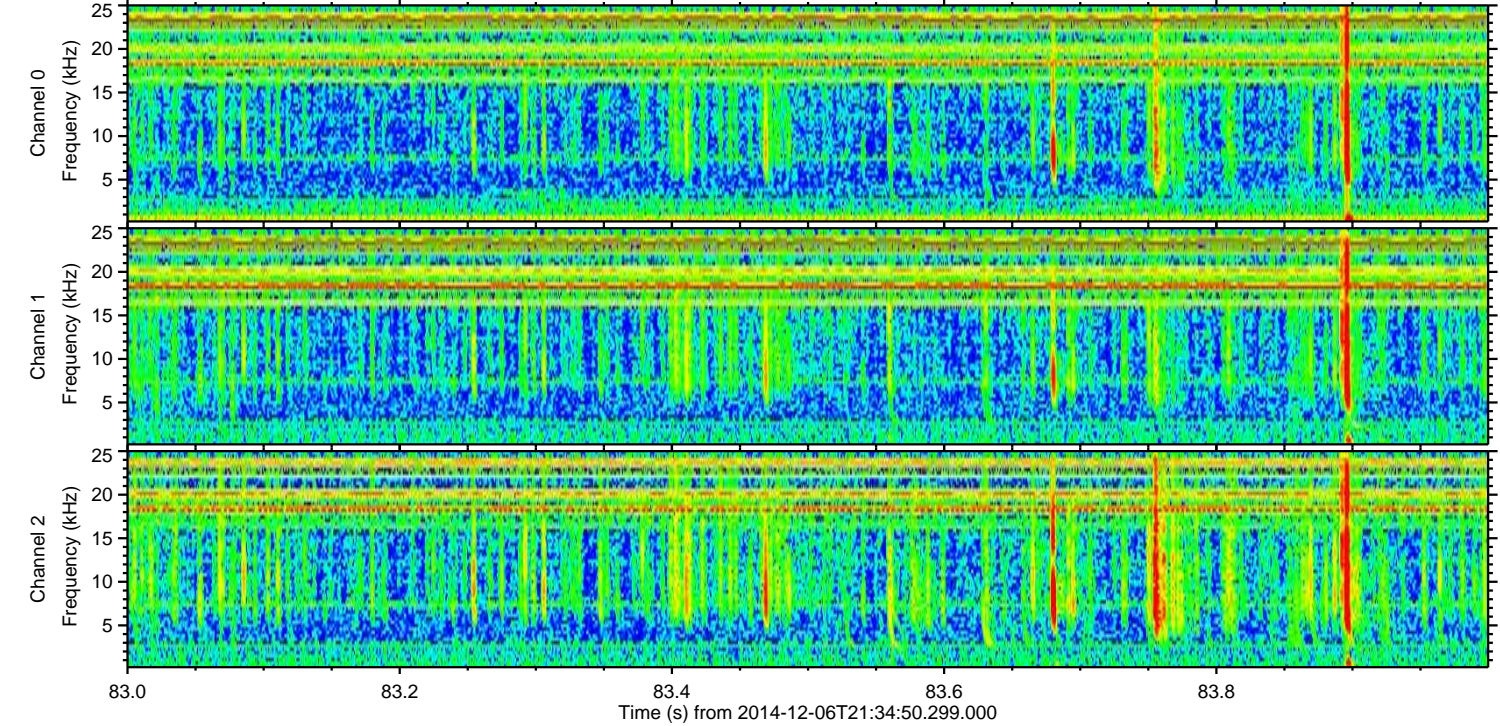
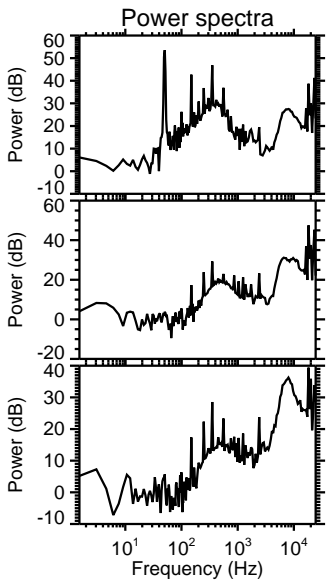
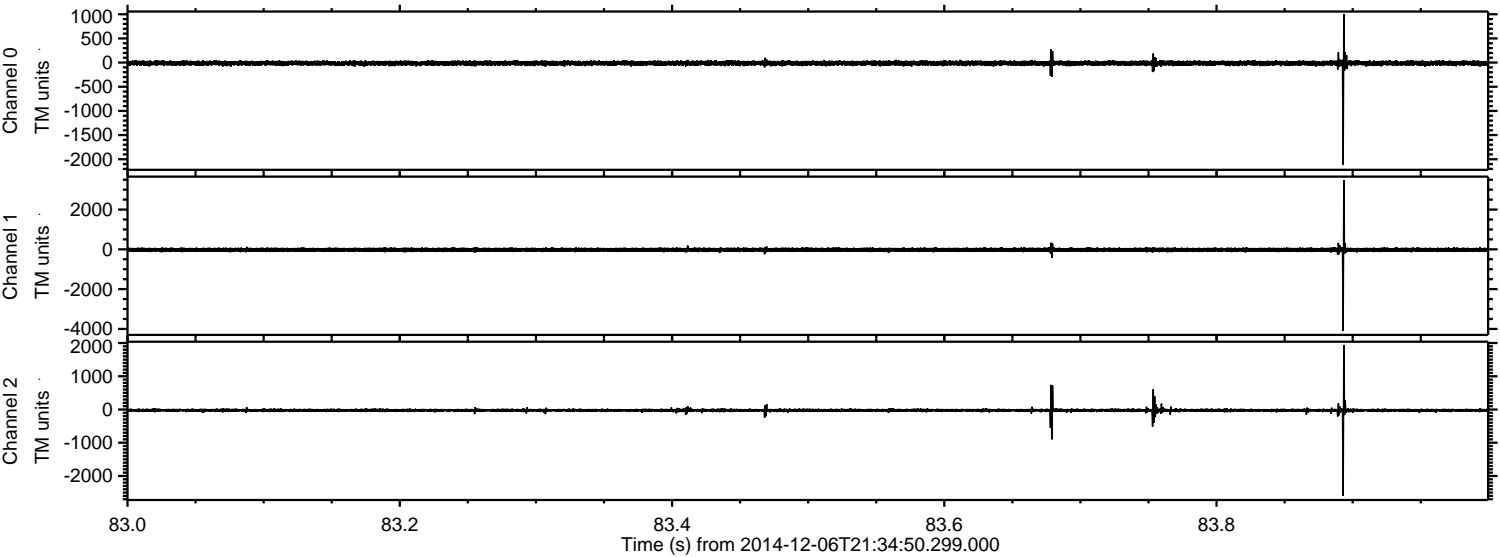
Channel 0
mn: -3091
mx: 3281
 μ : -13.2
 σ : 34.8

Channel 1
mn: -2938
mx: 3247
 μ : -23.5
 σ : 56.5

Channel 2
mn: -4756
mx: 3731
 μ : -25.6
 σ : 49.9

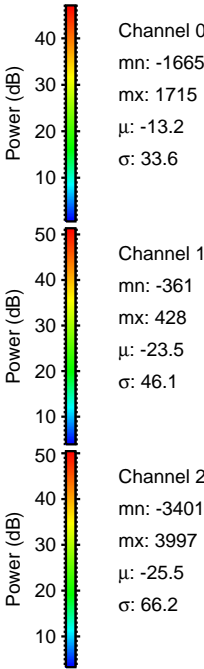
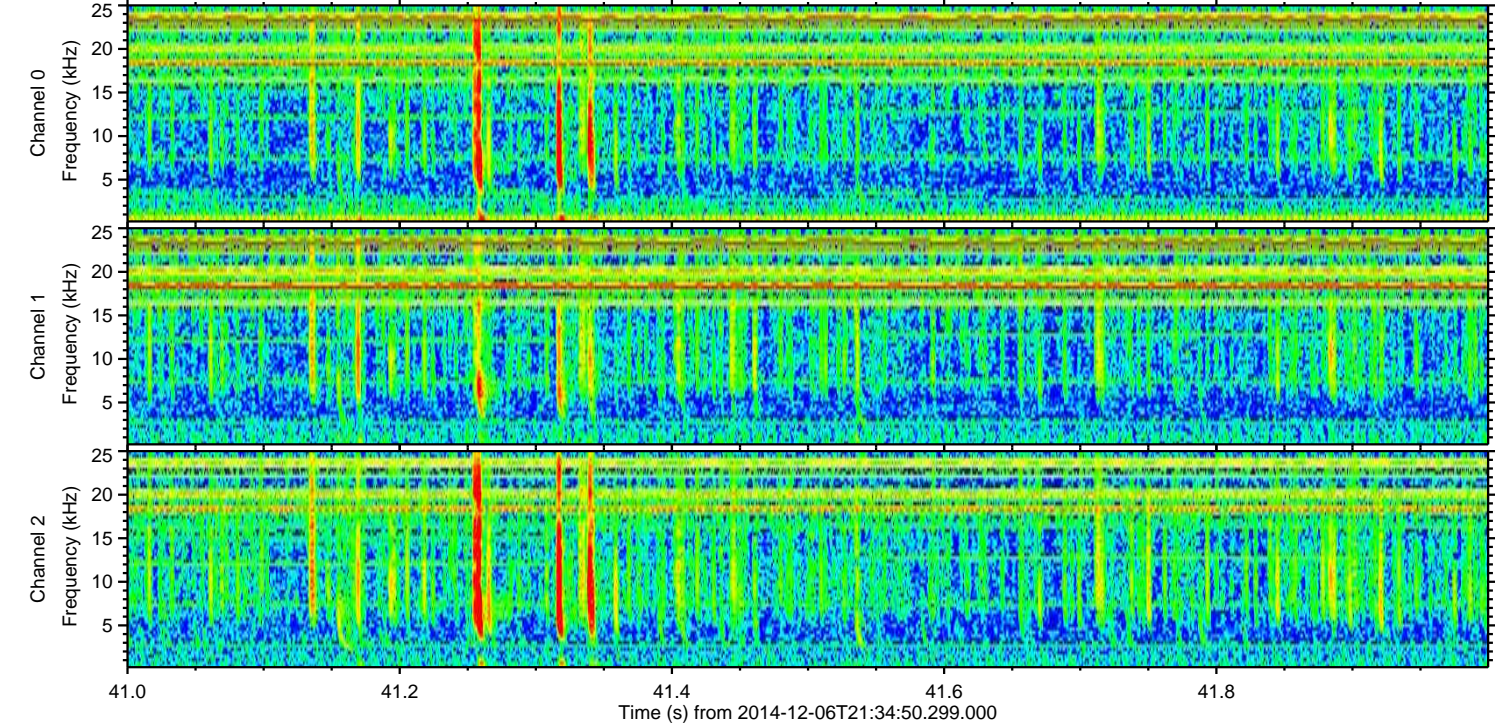
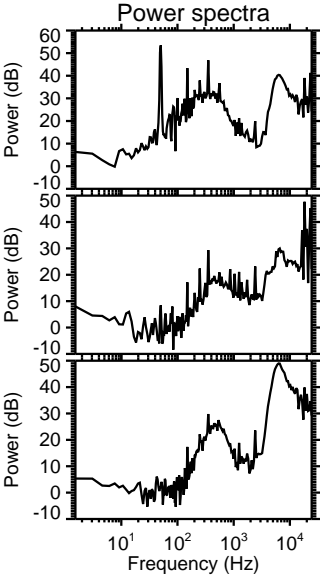
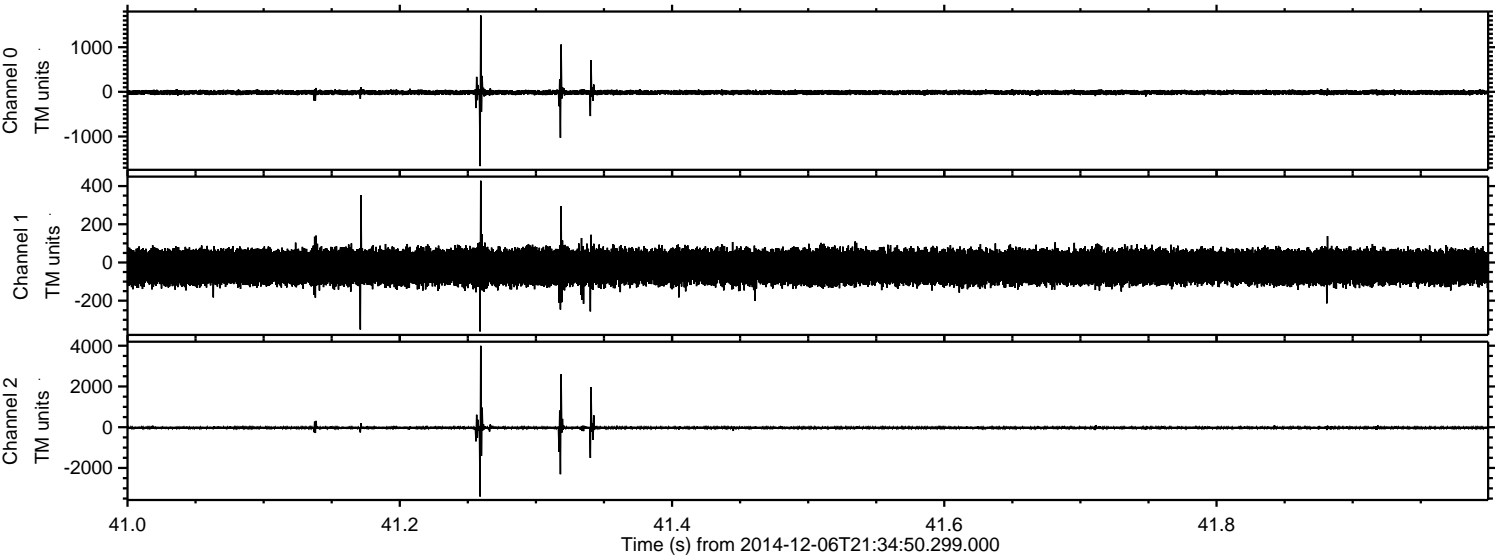
ELMAVAN 3D WAVEFORMS (Measured data sampled at 50 kHz) 49716 packets of 144 samples from 2014-12-06T21:34:50.299.000. Part 84/144

Processed Sat Dec 6 22:50:01 2014 by ELM ver.2012-10-06 from 001__elm20141206_213449__dat00.bin



ELMAVAN 3D WAVEFORMS (Measured data sampled at 50 kHz) 49716 packets of 144 samples from 2014-12-06T21:34:50.299.000. Part 42/144

Processed Sat Dec 6 22:50:02 2014 by ELM ver.2012-10-06 from 001__elm20141206_213449__dat00.bin



ELMAVAN 3D WAVEFORMS (Measured data sampled at 50 kHz) 49716 packets of 144 samples from 2014-12-06T21:34:50.299.000. Part 3/144

Processed Sat Dec 6 22:50:03 2014 by ELM ver.2012-10-06 from 001__elm20141206_213449__dat00.bin

