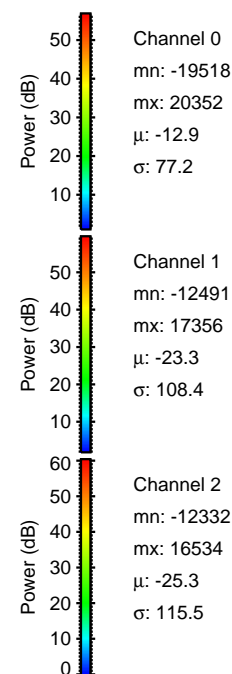
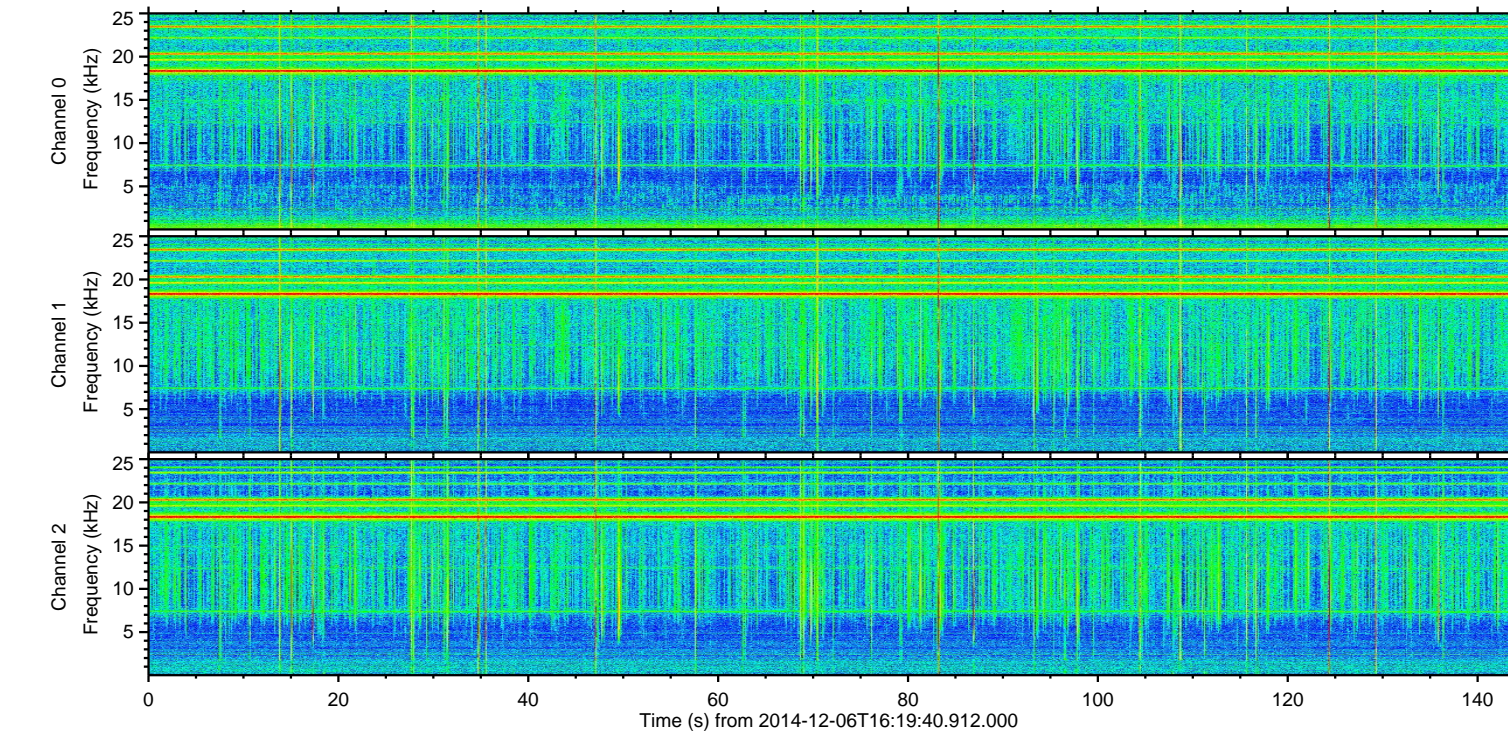
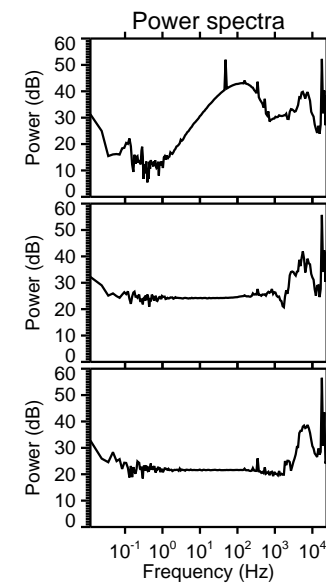
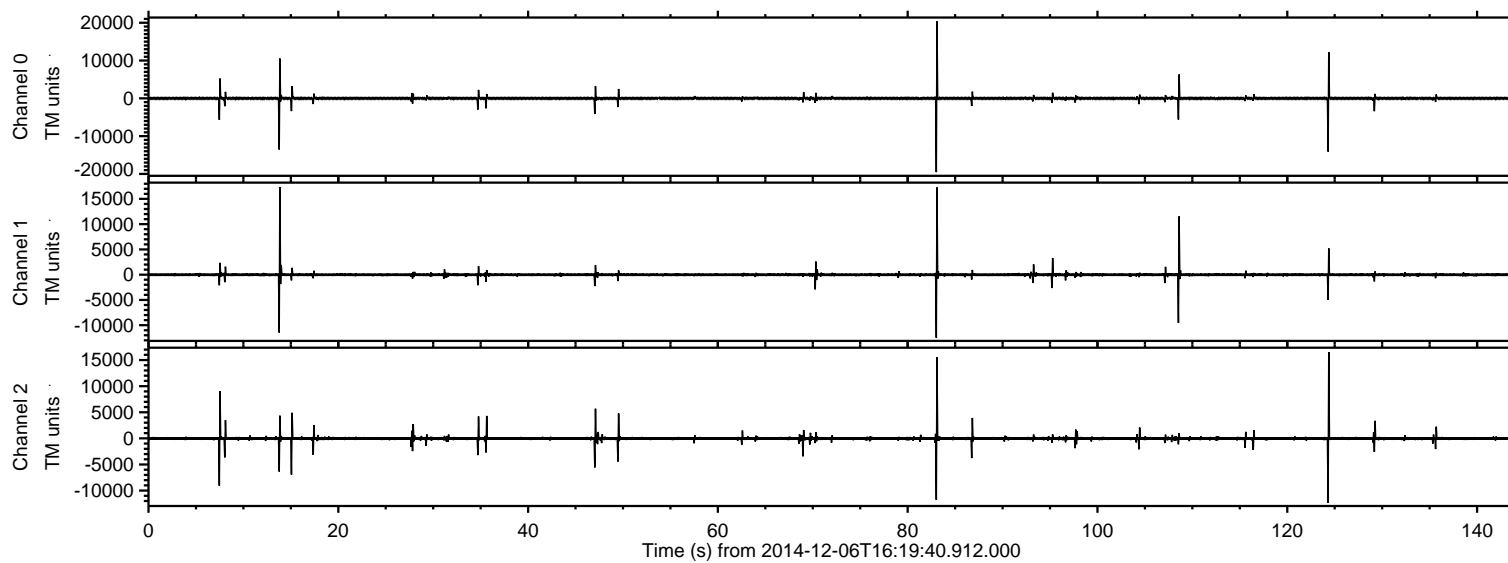
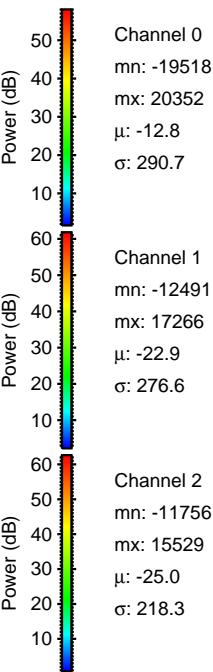
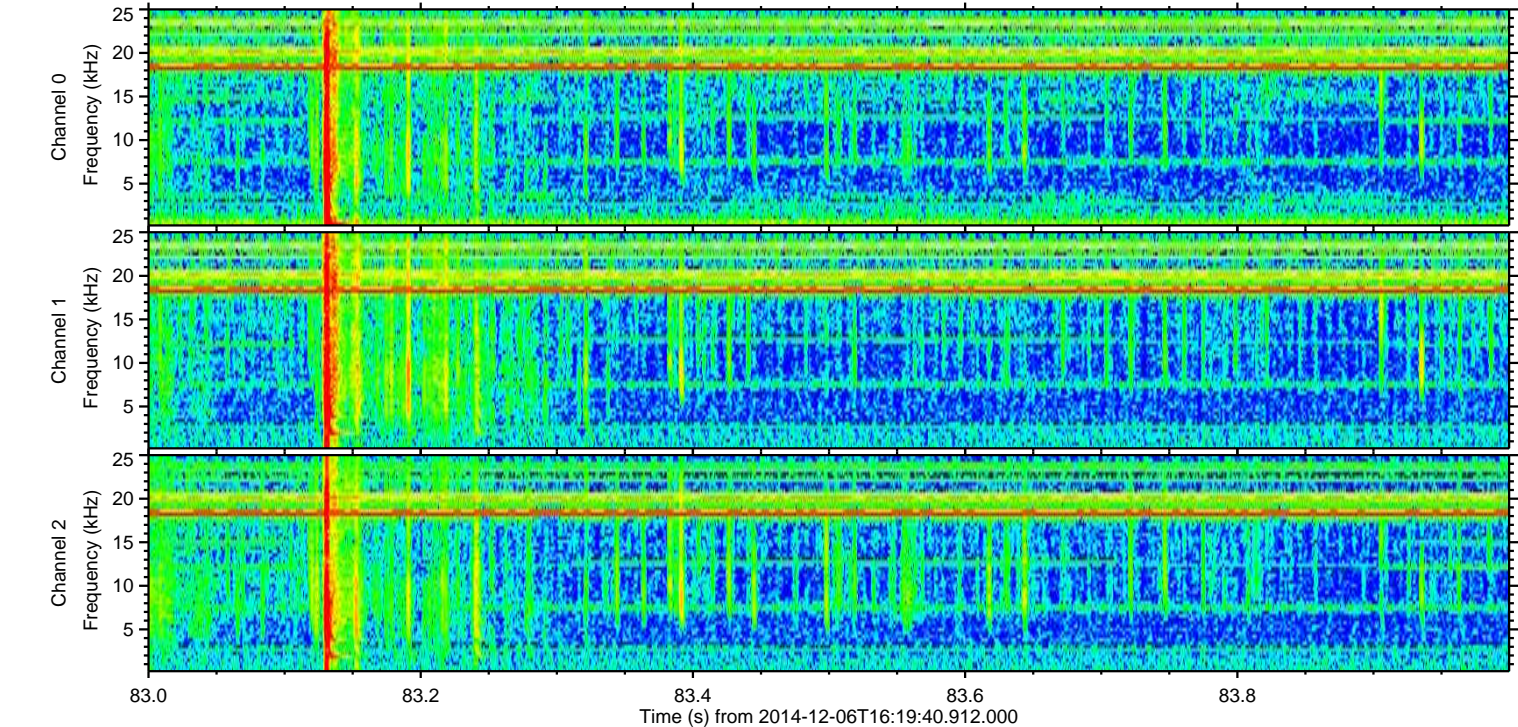
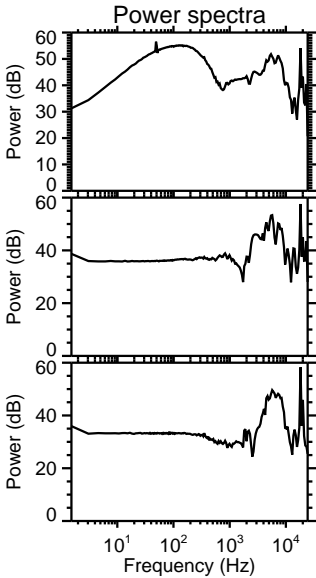
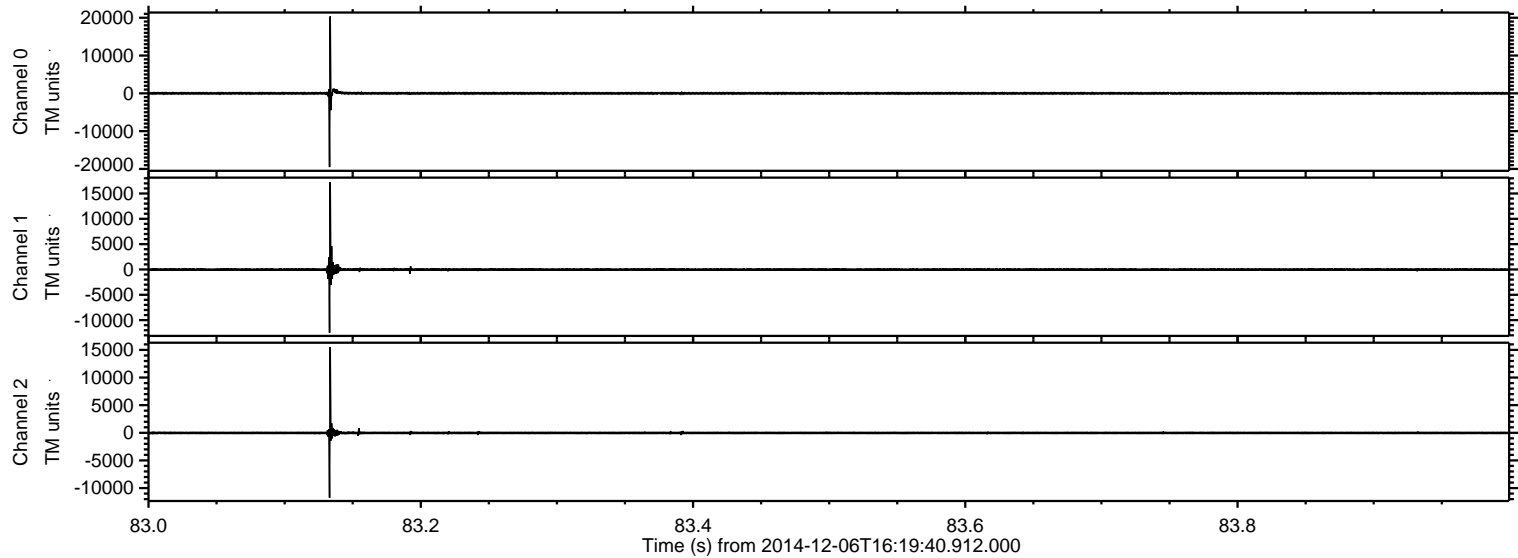


ELMAVAN 3D WAVEFORMS (Measured data sampled at 50 kHz) 49785 packets of 144 samples from 2014-12-06T16:19:40.912.000.

Processed Sat Dec 6 17:28:40 2014 by ELM ver.2012-10-06 from 001__elm20141206_161939__dat00.bin

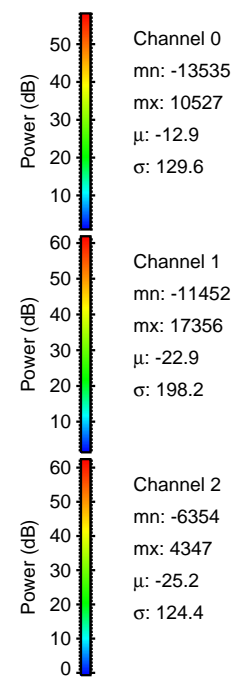
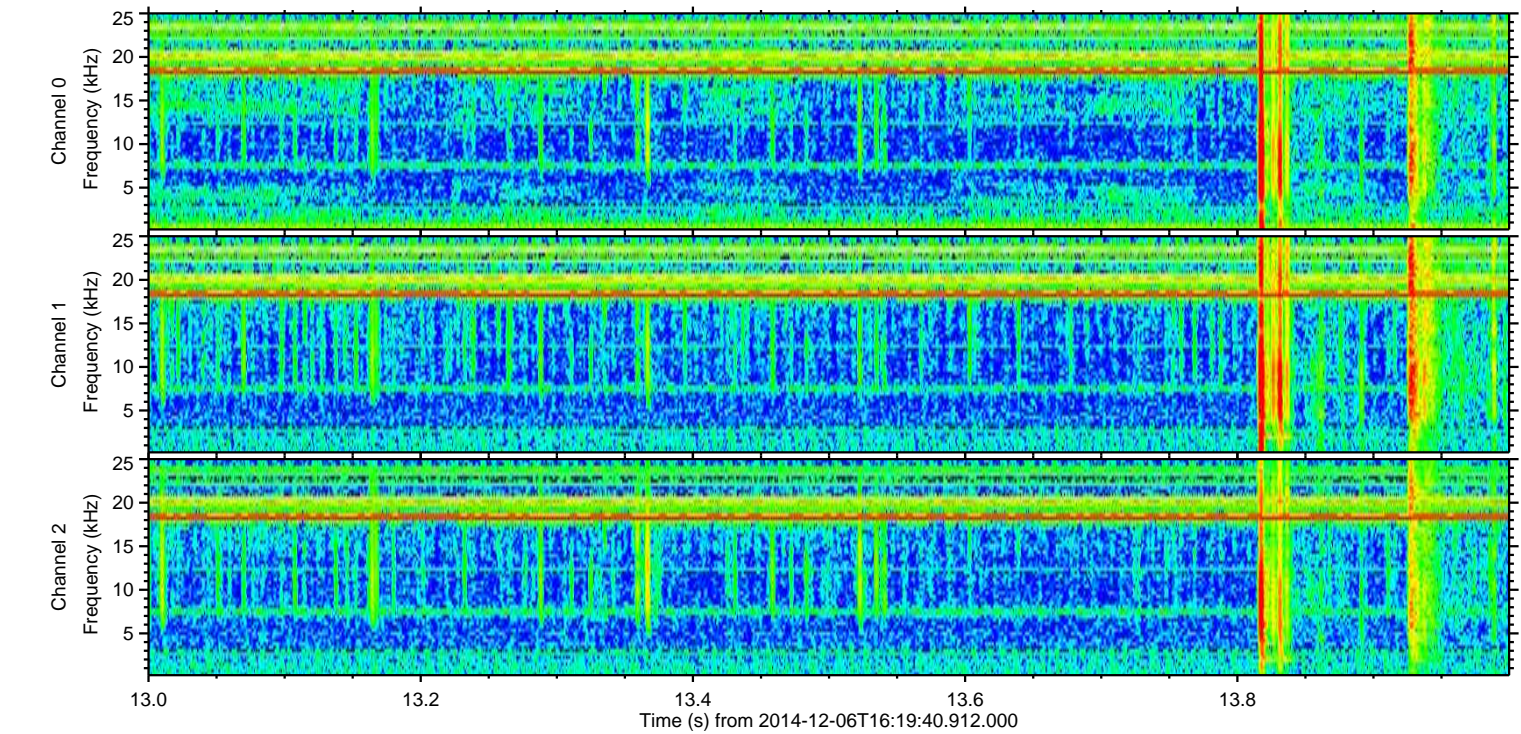
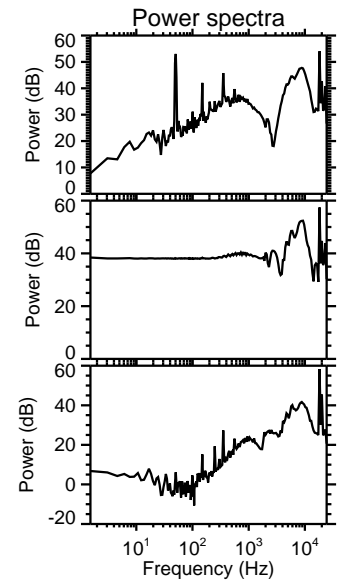
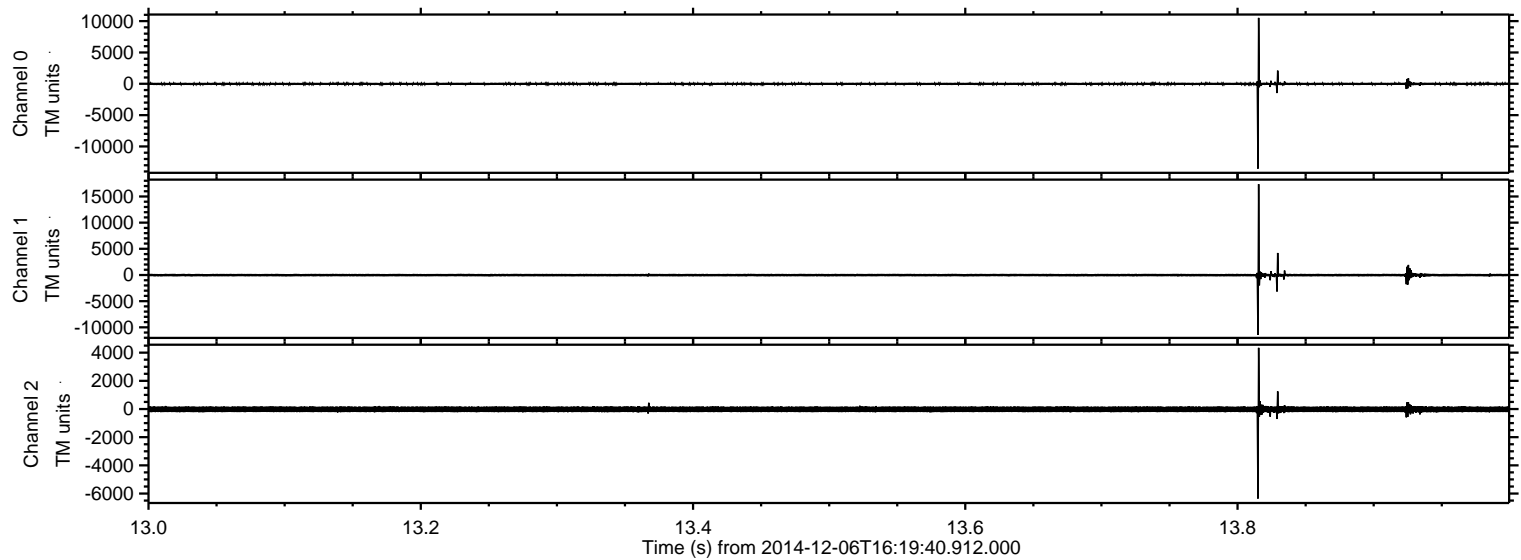


Processed Sat Dec 6 17:28:51 2014 by ELM ver.2012-10-06 from 001__elm20141206_161939__dat00.bin



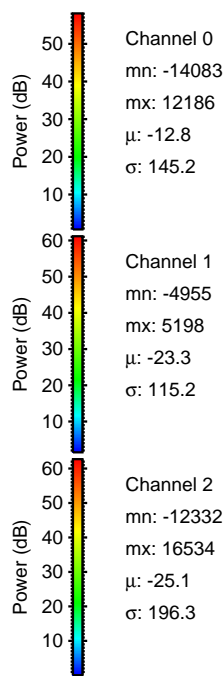
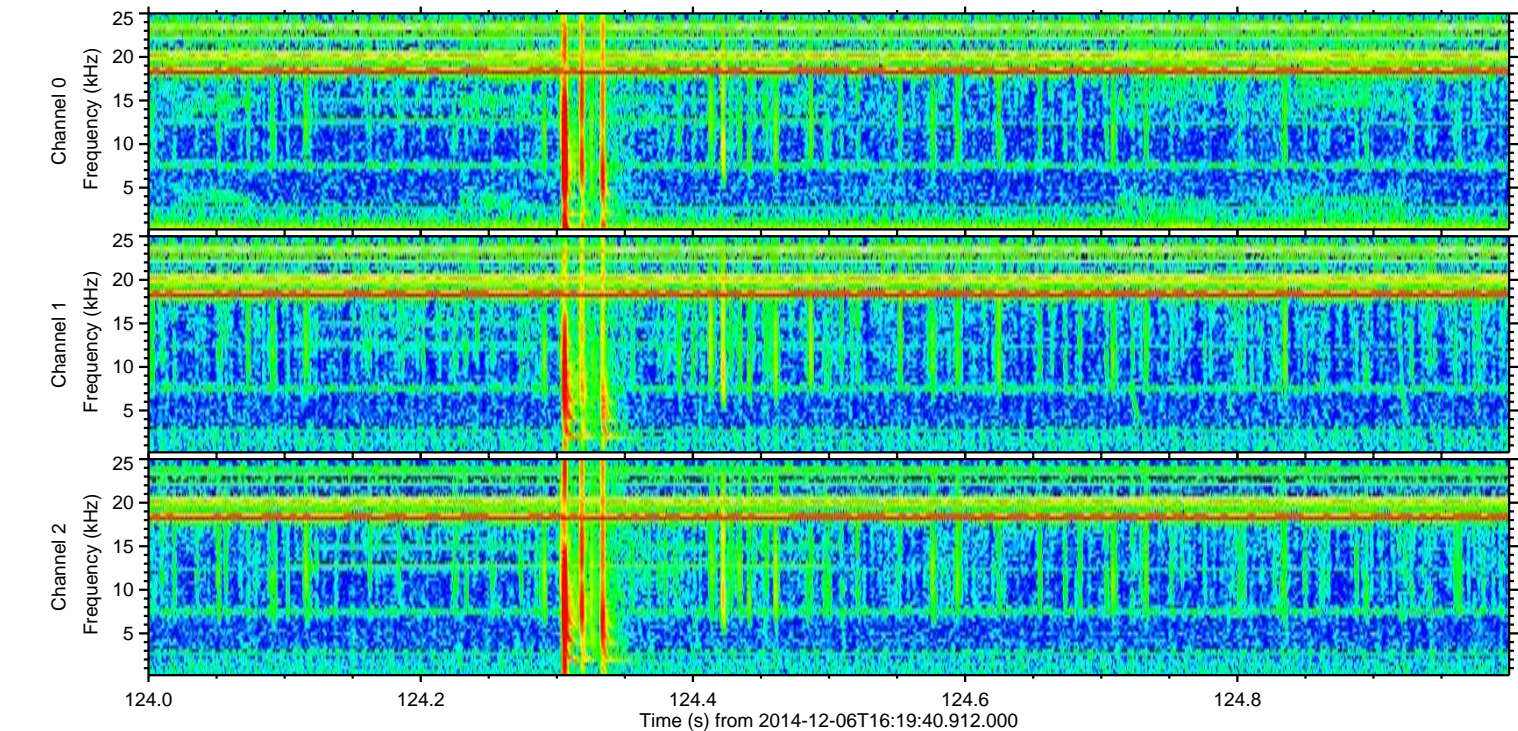
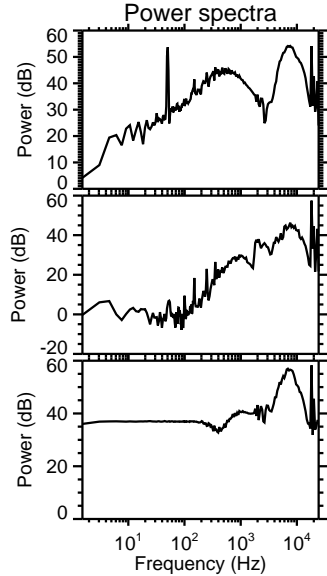
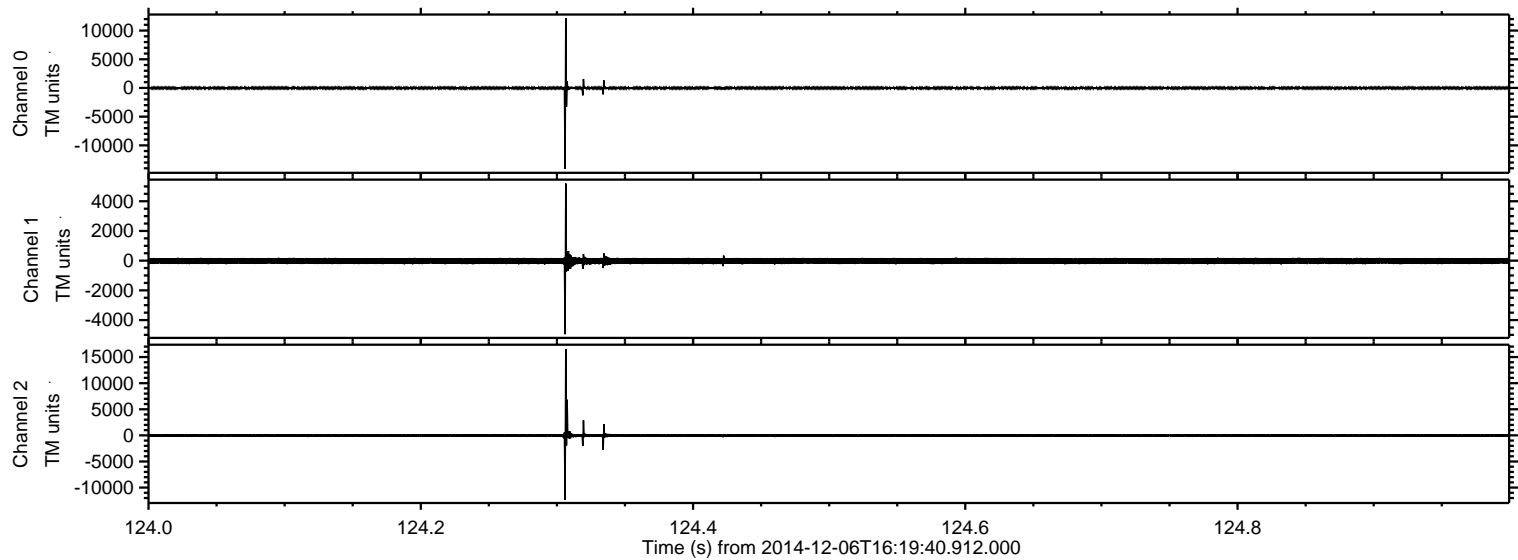
ELMAVAN 3D WAVEFORMS (Measured data sampled at 50 kHz) 49785 packets of 144 samples from 2014-12-06T16:19:40.912.000. Part 14/144

Processed Sat Dec 6 17:28:52 2014 by ELM ver.2012-10-06 from 001__elm20141206_161939__dat00.bin



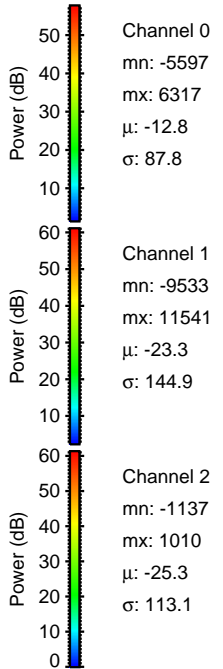
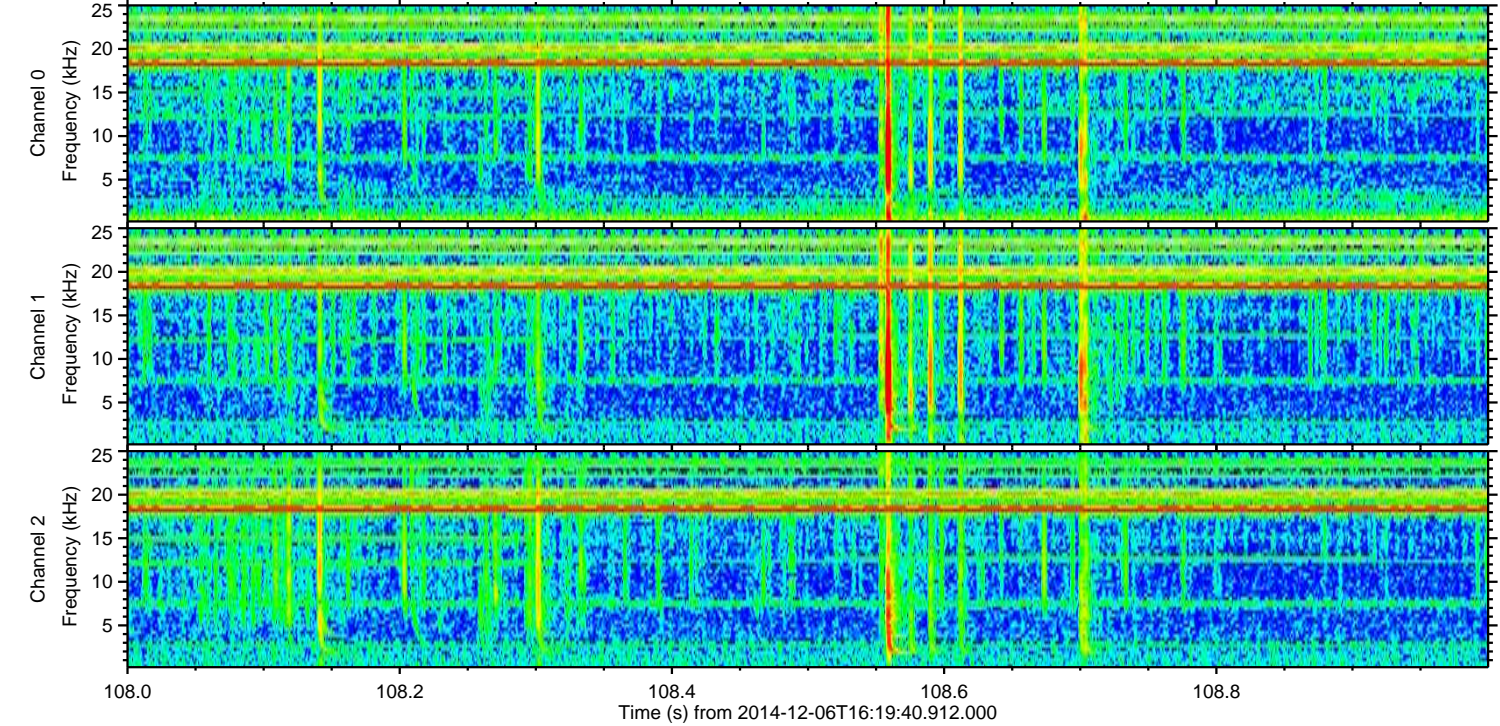
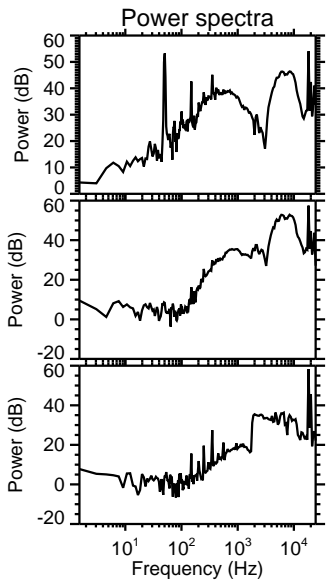
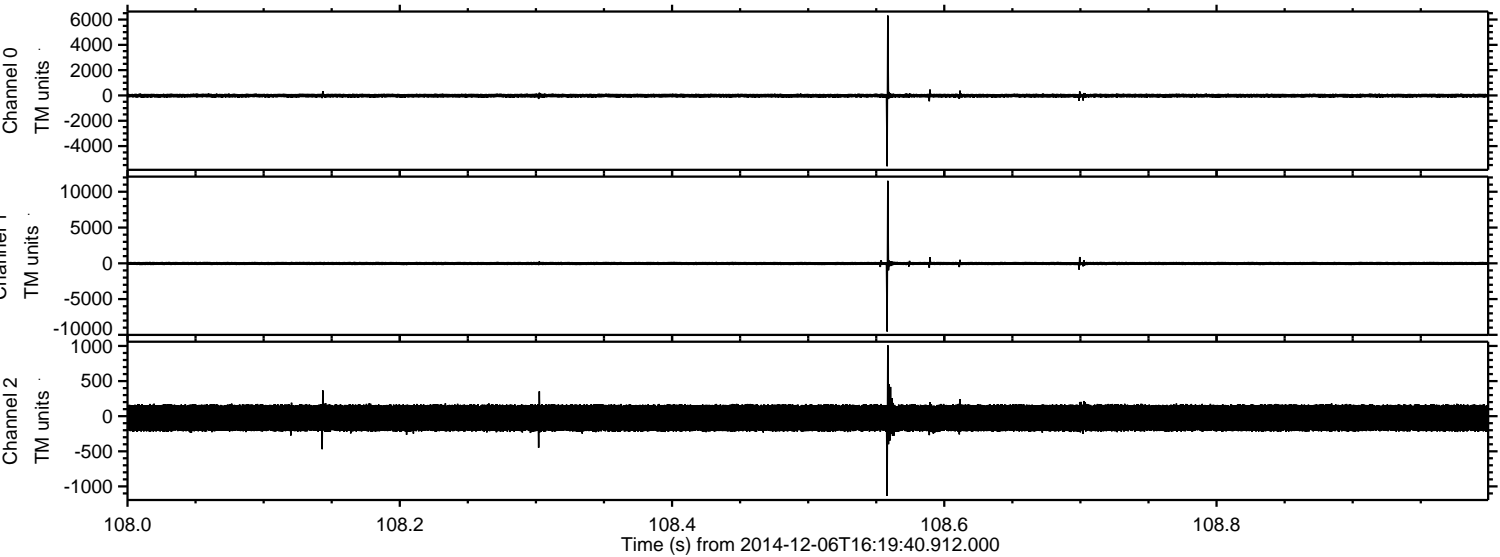
ELMAVAN 3D WAVEFORMS (Measured data sampled at 50 kHz) 49785 packets of 144 samples from 2014-12-06T16:19:40.912.000. Part 125/144

Processed Sat Dec 6 17:28:53 2014 by ELM ver.2012-10-06 from 001__elm20141206_161939__dat00.bin

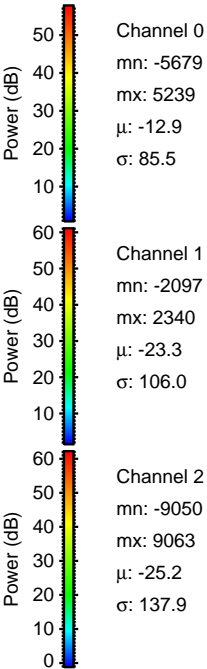
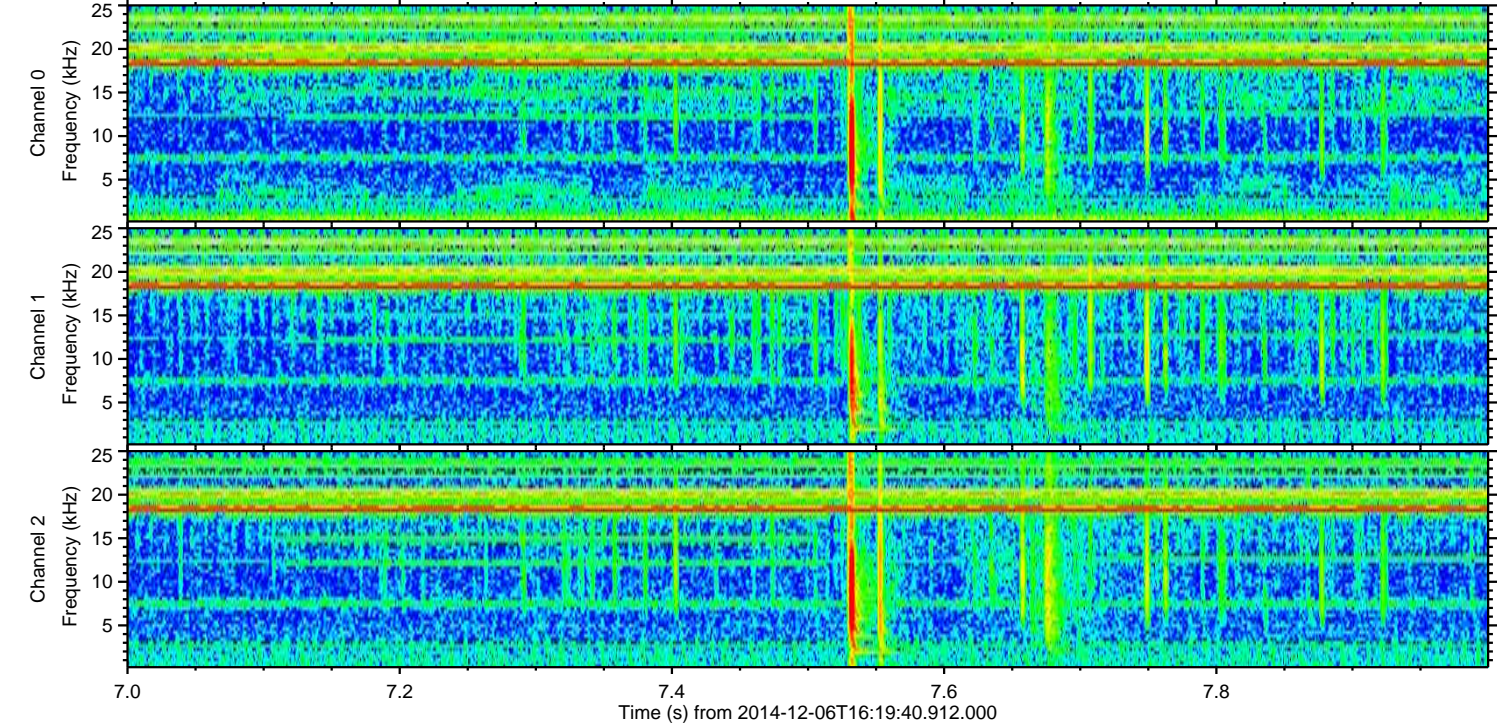
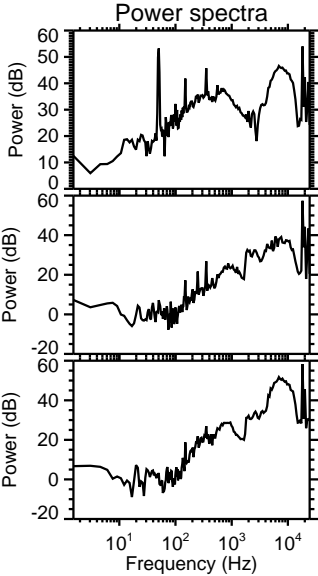
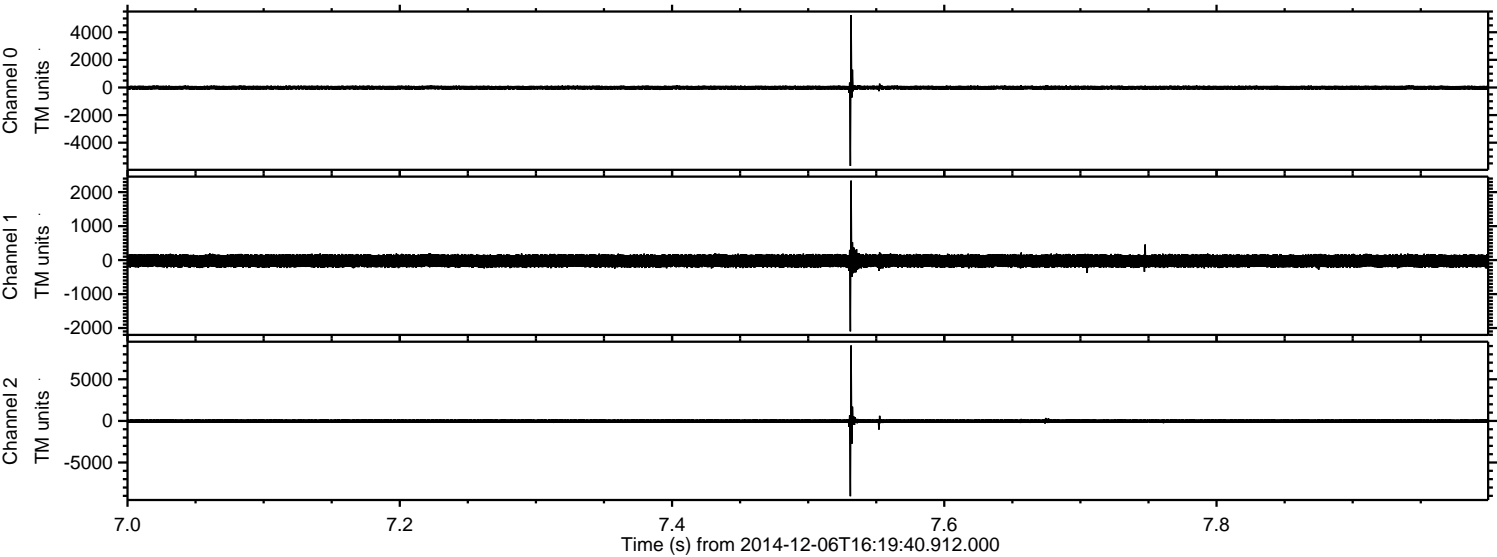


ELMAVAN 3D WAVEFORMS (Measured data sampled at 50 kHz) 49785 packets of 144 samples from 2014-12-06T16:19:40.912.000. Part 109/144

Processed Sat Dec 6 17:28:54 2014 by ELM ver.2012-10-06 from 001__elm20141206_161939__dat00.bin

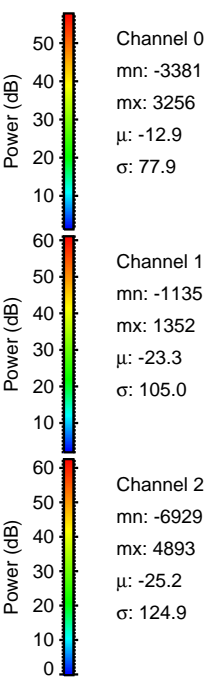
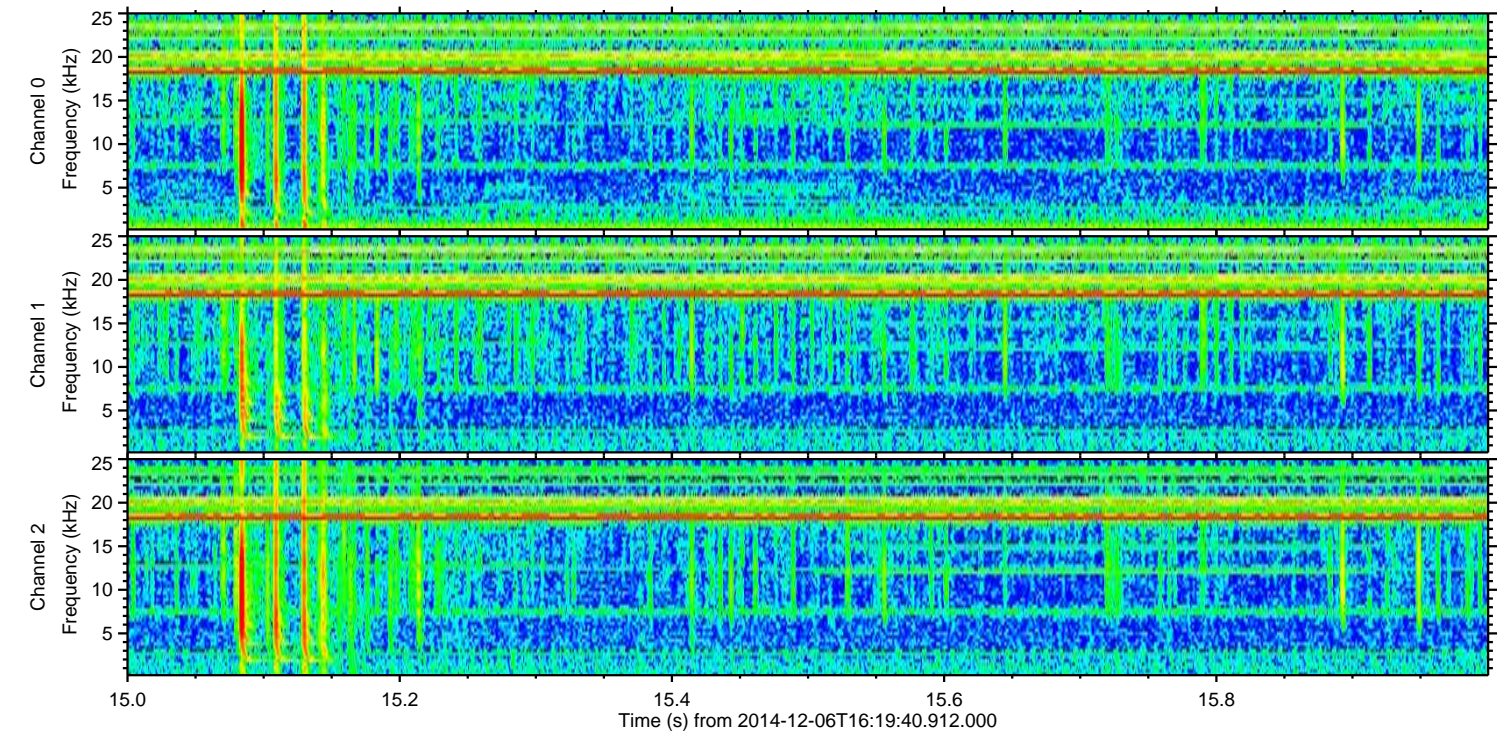
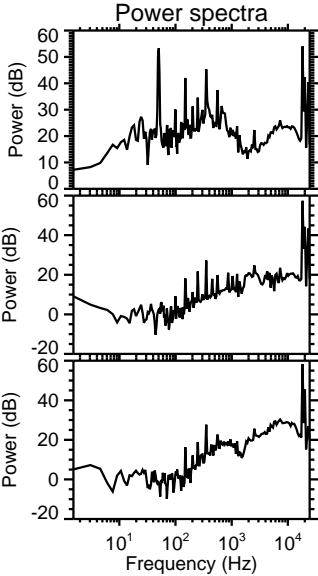
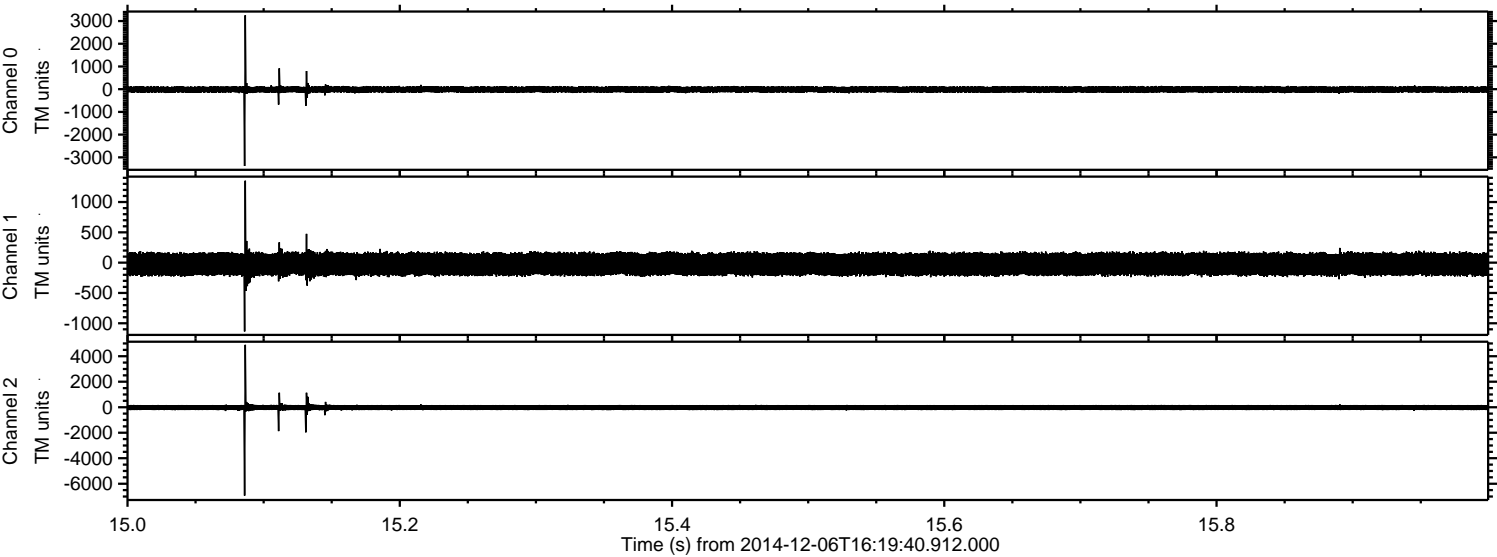


Processed Sat Dec 6 17:28:55 2014 by ELM ver.2012-10-06 from 001__elm20141206_161939__dat00.bin



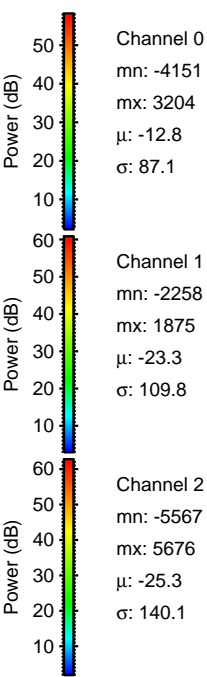
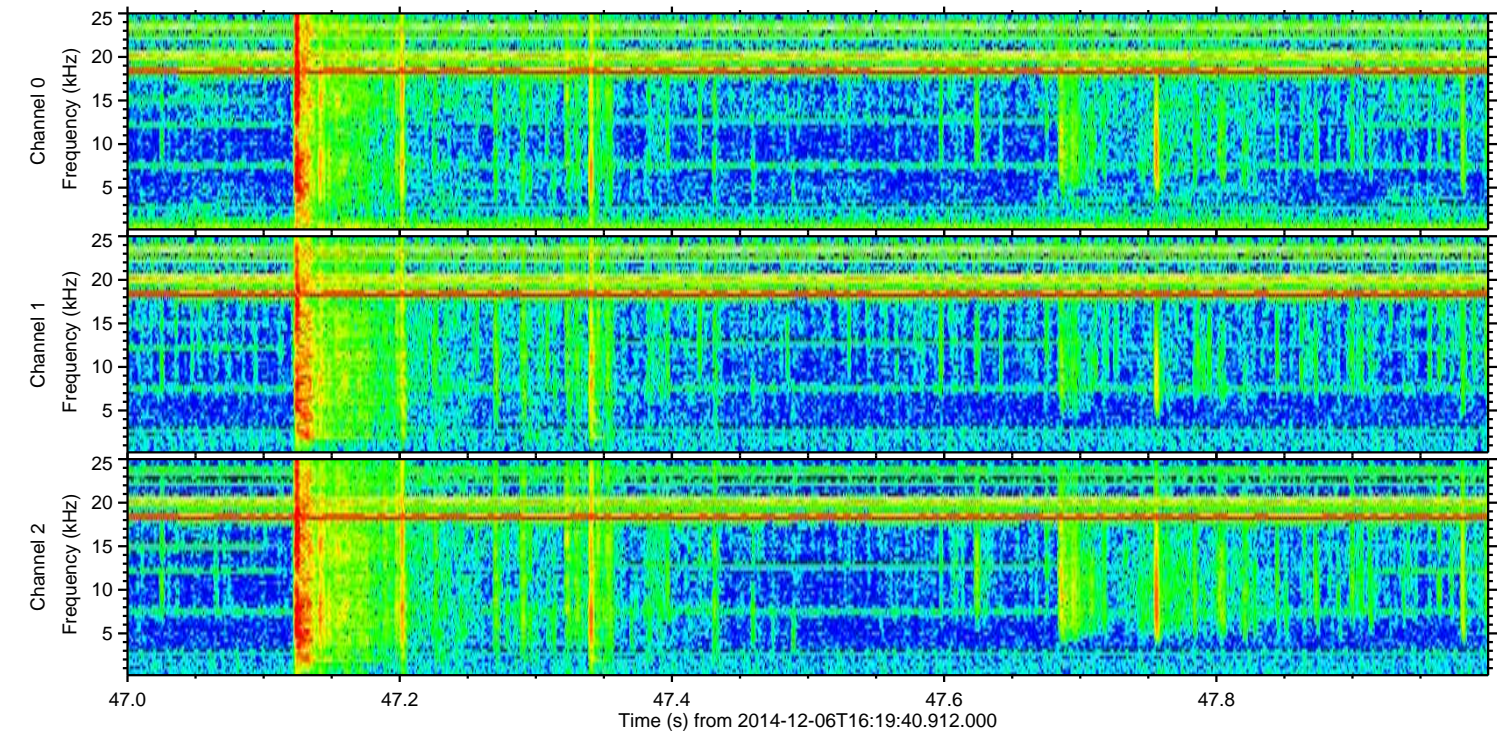
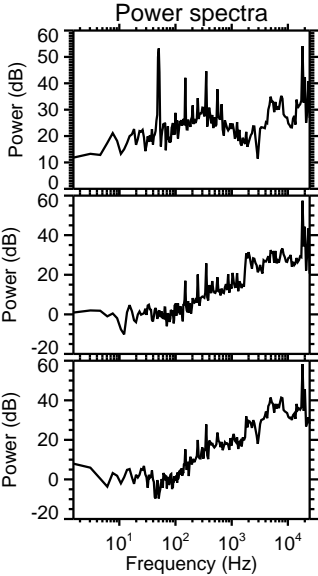
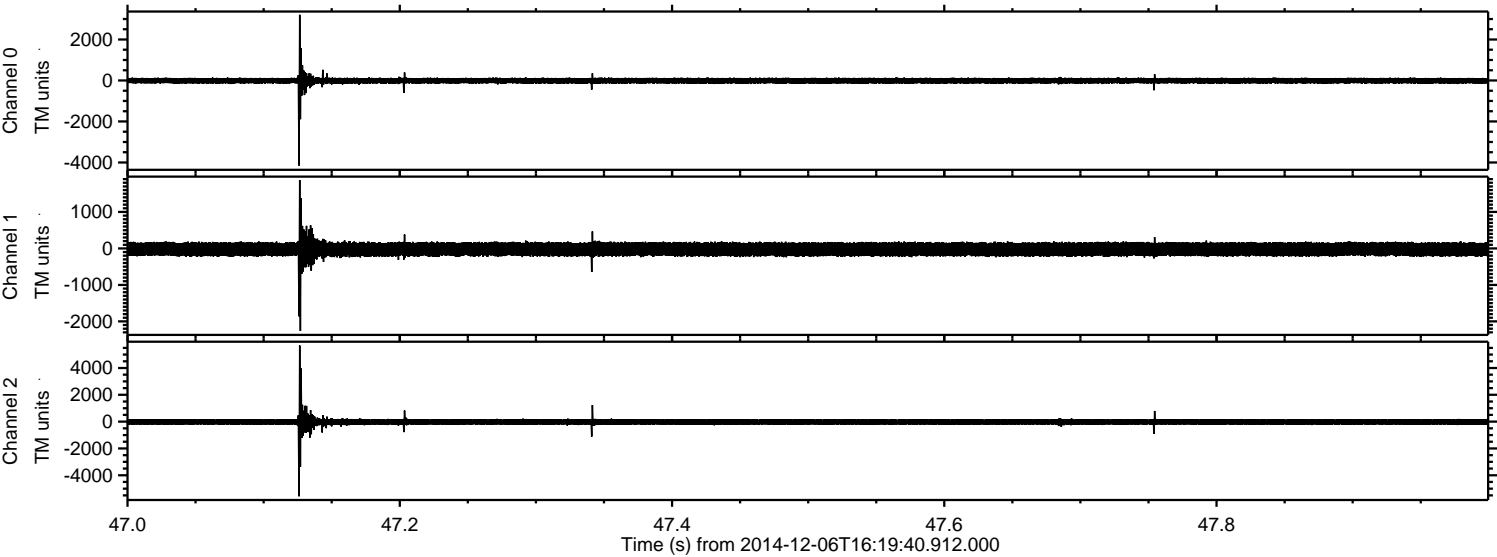
ELMAVAN 3D WAVEFORMS (Measured data sampled at 50 kHz) 49785 packets of 144 samples from 2014-12-06T16:19:40.912.000. Part 16/144

Processed Sat Dec 6 17:28:56 2014 by ELM ver.2012-10-06 from 001__elm20141206_161939__dat00.bin

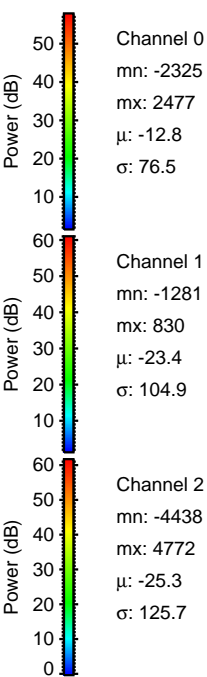
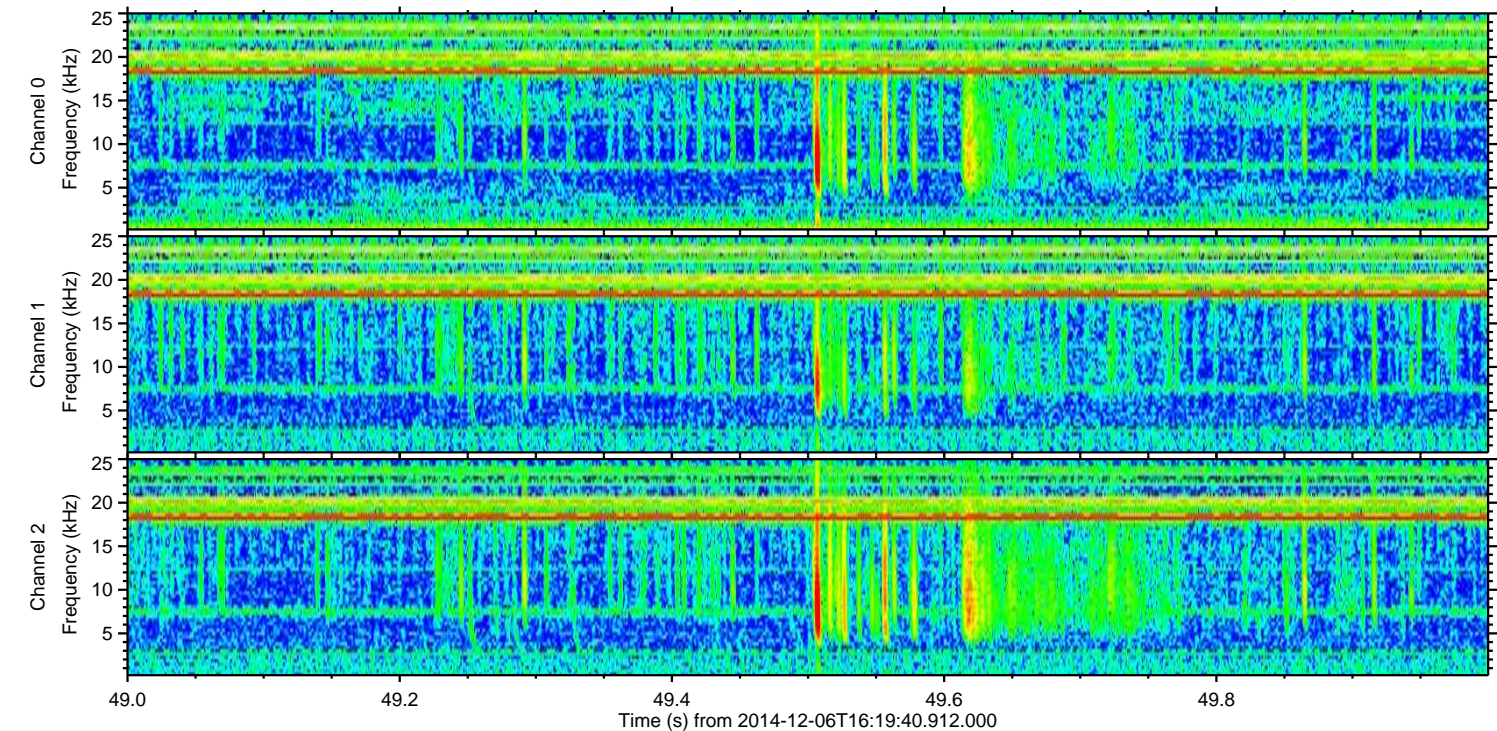
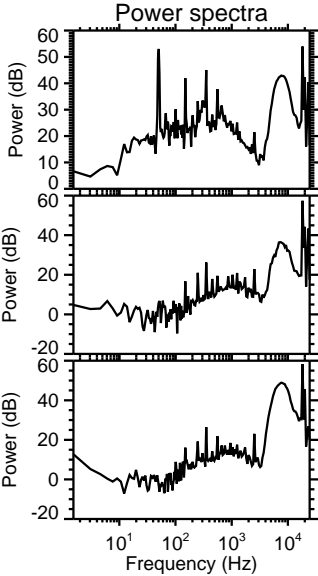
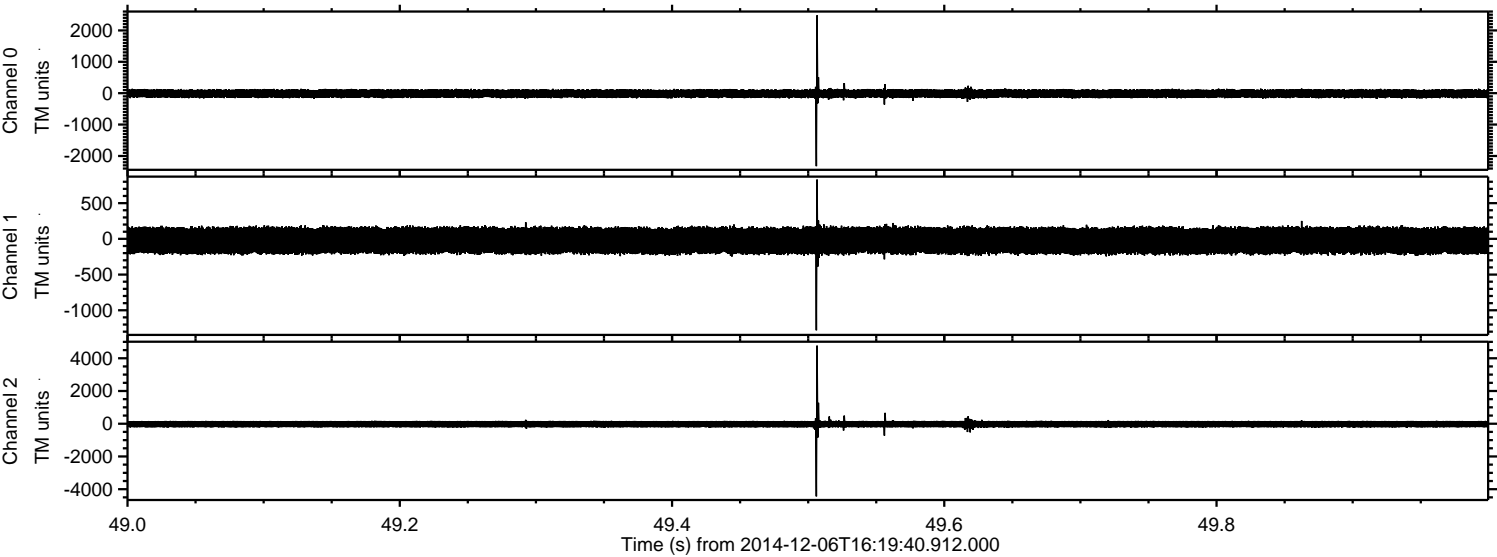


ELMAVAN 3D WAVEFORMS (Measured data sampled at 50 kHz) 49785 packets of 144 samples from 2014-12-06T16:19:40.912.000. Part 48/144

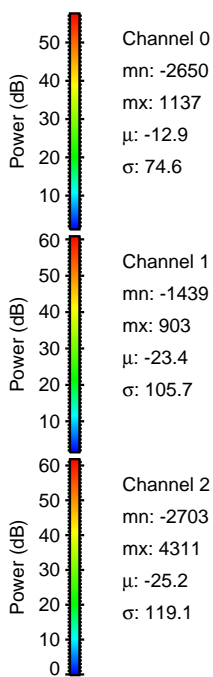
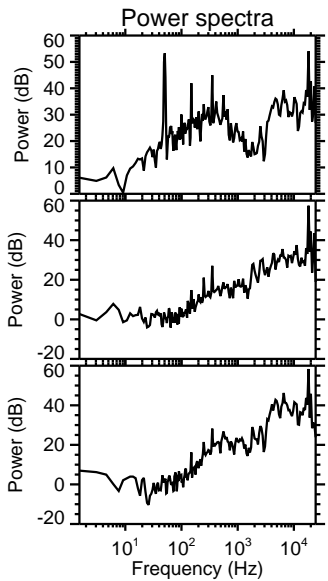
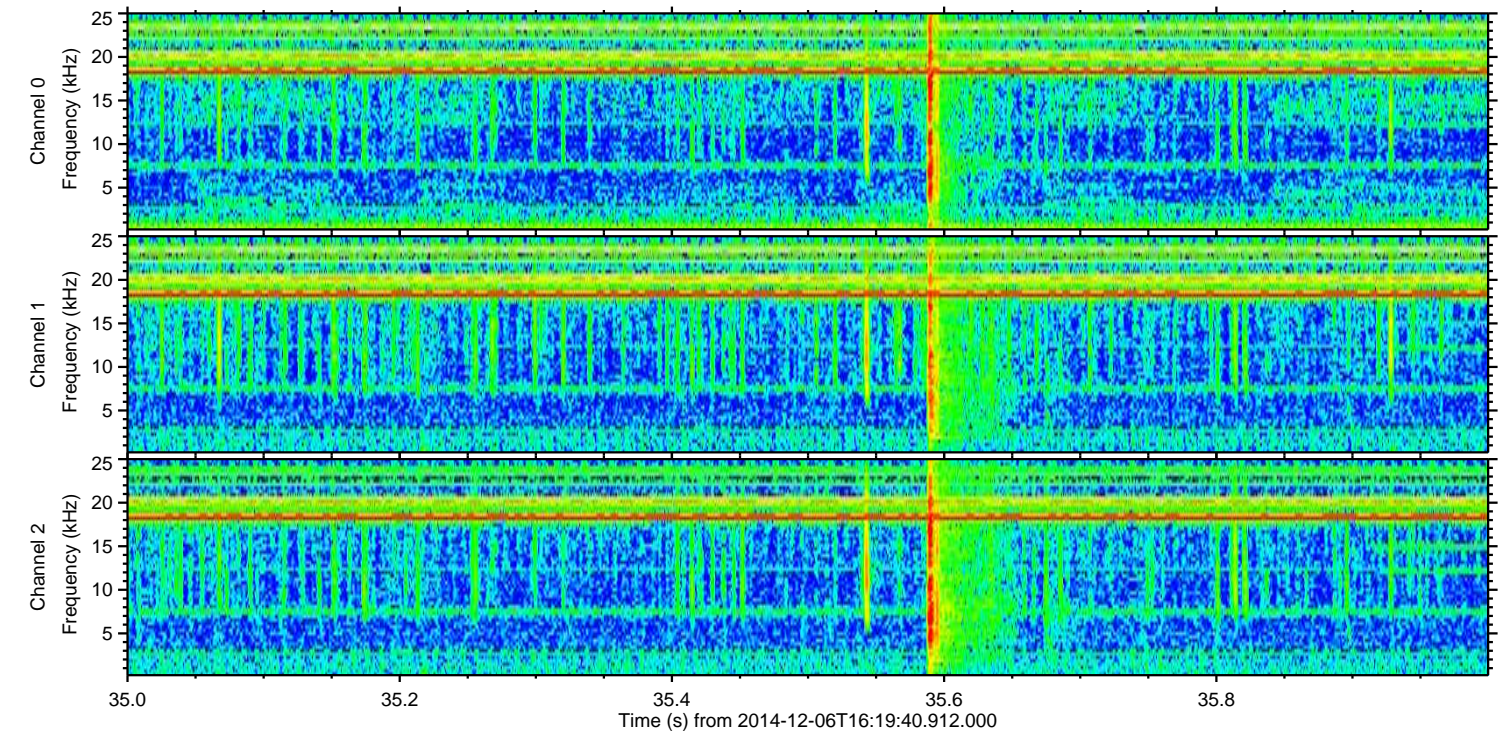
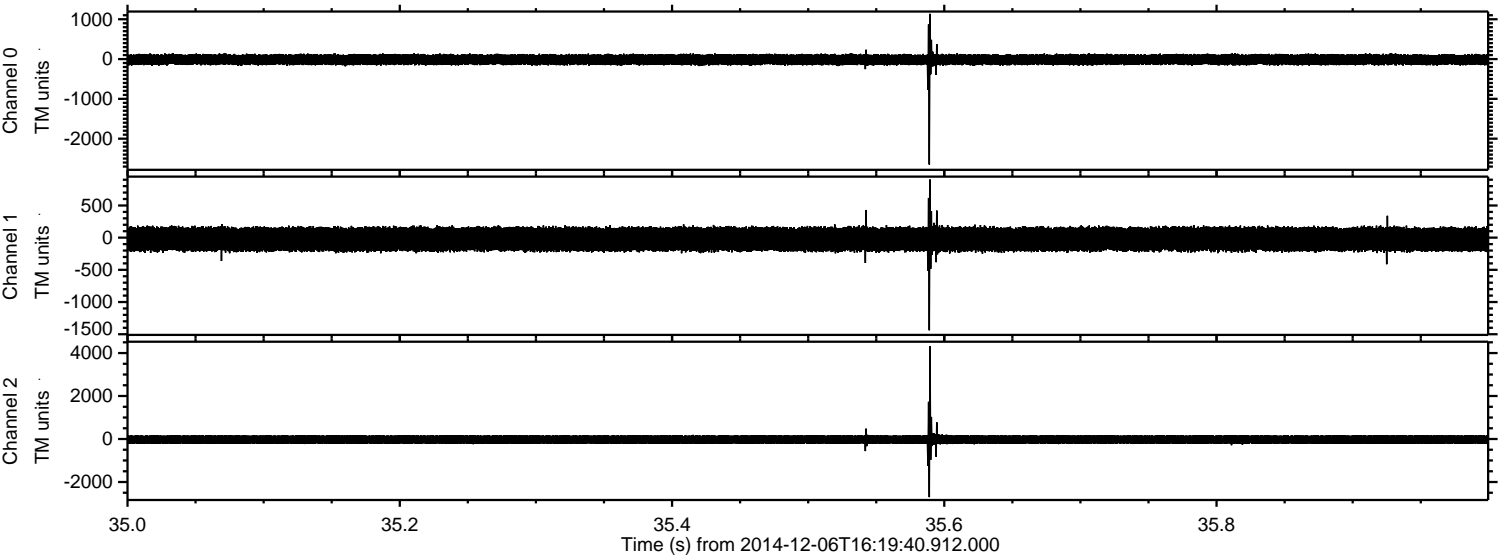
Processed Sat Dec 6 17:28:57 2014 by ELM ver.2012-10-06 from 001__elm20141206_161939__dat00.bin



Processed Sat Dec 6 17:28:58 2014 by ELM ver.2012-10-06 from 001__elm20141206_161939__dat00.bin



Processed Sat Dec 6 17:28:59 2014 by ELM ver.2012-10-06 from 001__elm20141206_161939__dat00.bin



Channel 0
mn: -2650
mx: 1137
 μ : -12.9
 σ : 74.6

Channel 1
mn: -1439
mx: 903
 μ : -23.4
 σ : 105.7

Channel 2
mn: -2703
mx: 4311
 μ : -25.2
 σ : 119.1

Processed Sat Dec 6 17:29:00 2014 by ELM ver.2012-10-06 from 001__elm20141206_161939__dat00.bin

