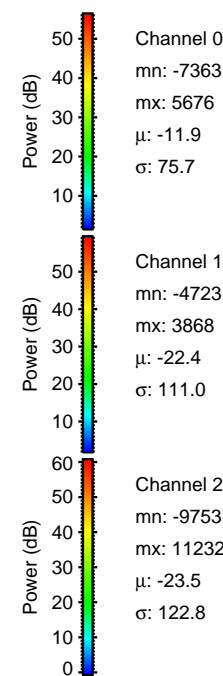
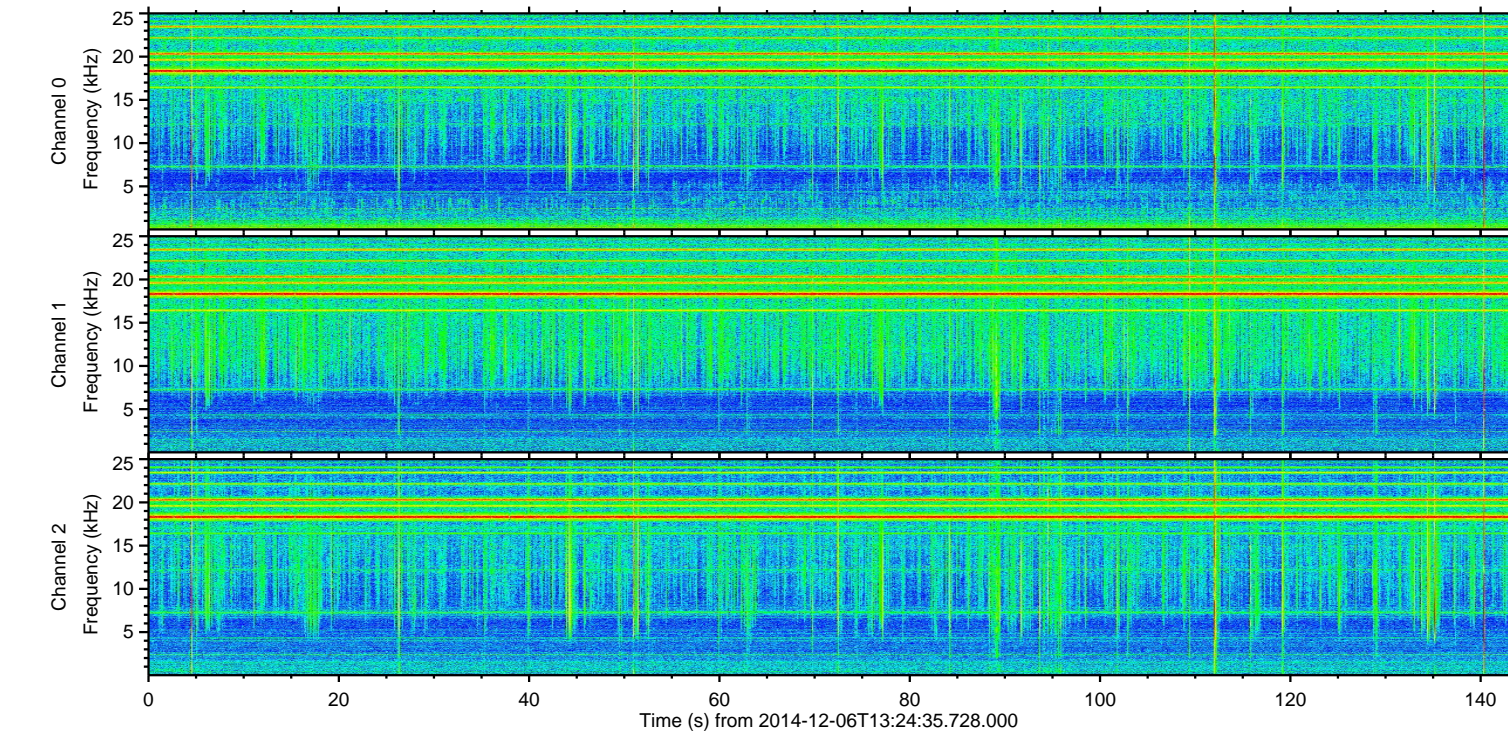
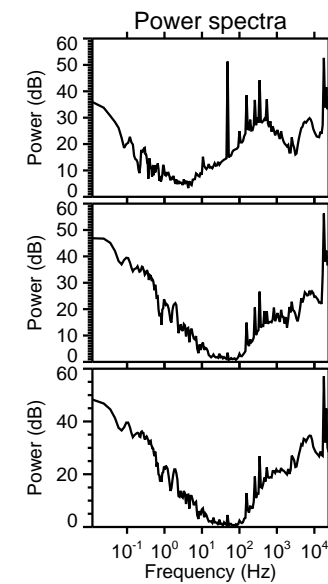
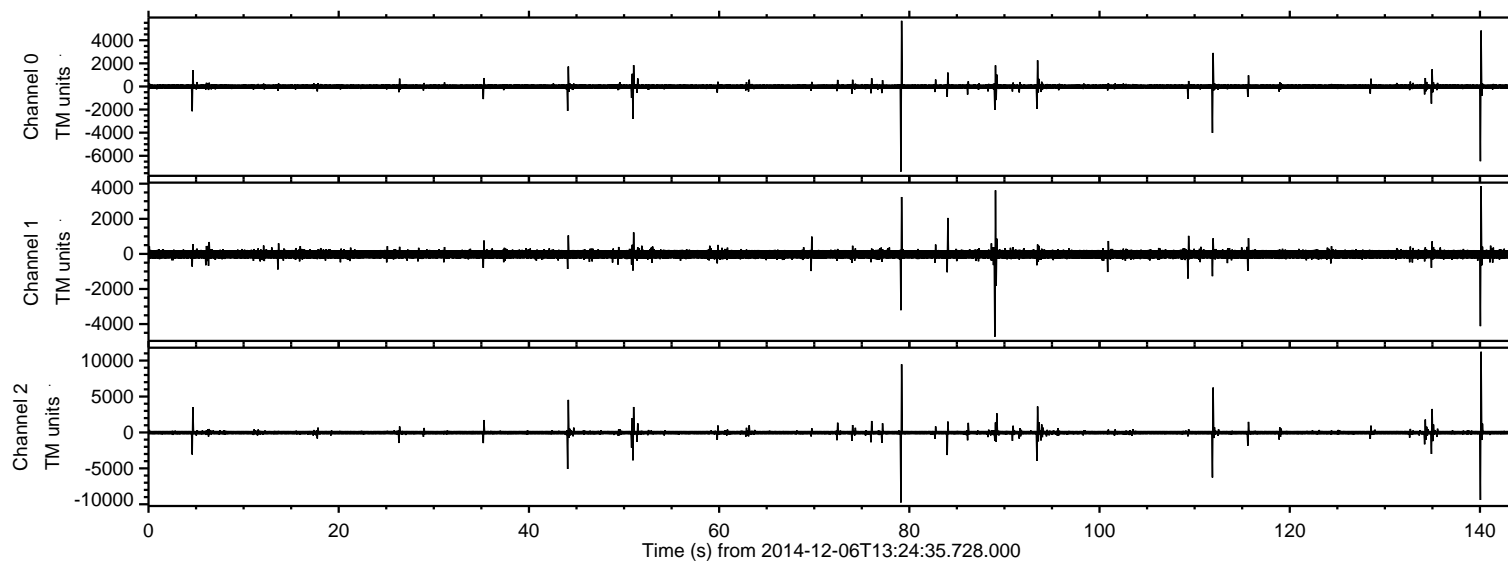


# ELMAVAN 3D WAVEFORMS (Measured data sampled at 50 kHz) 49677 packets of 144 samples from 2014-12-06T13:24:35.728.000.

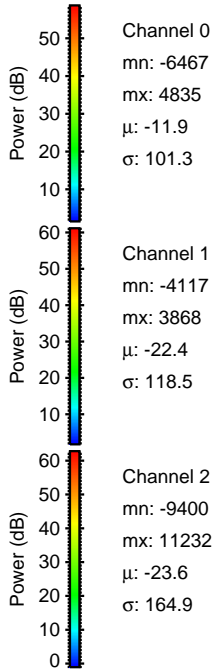
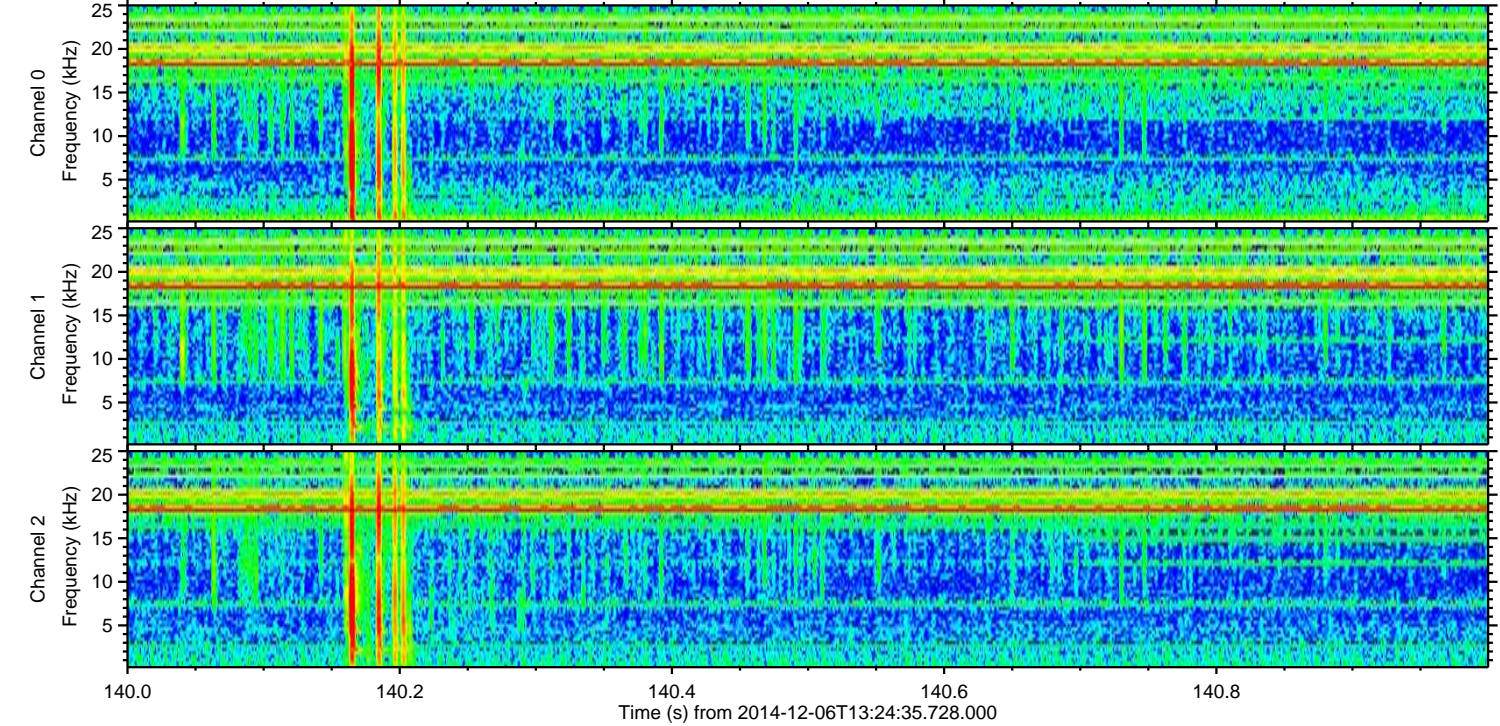
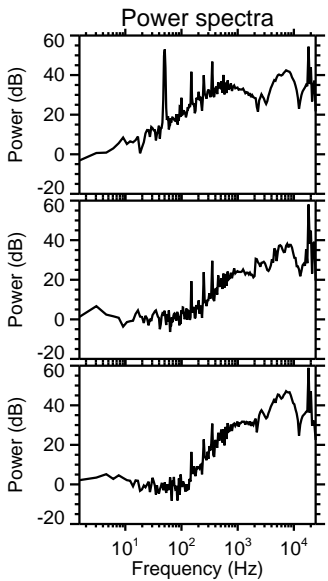
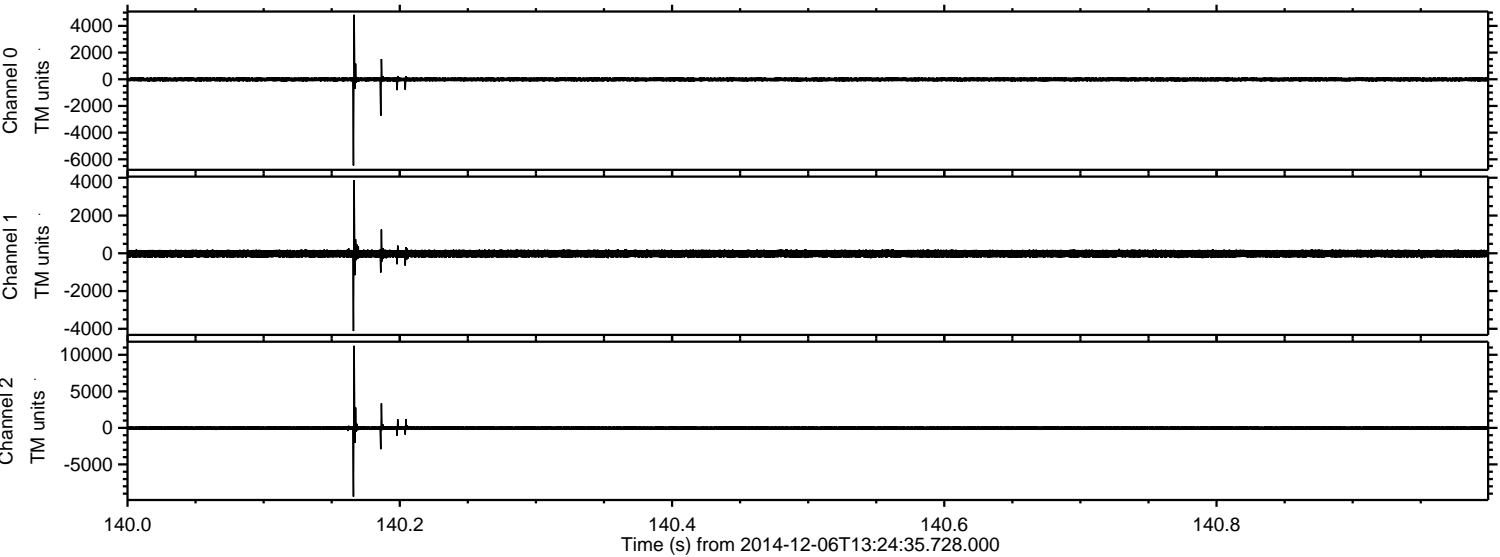
Processed Sat Dec 6 14:38:19 2014 by ELM ver.2012-10-06 from 001\_\_elm20141206\_132434\_\_dat00.bin





ELMAVAN 3D WAVEFORMS (Measured data sampled at 50 kHz) 49677 packets of 144 samples from 2014-12-06T13:24:35.728.000. Part 141/144

Processed Sat Dec 6 14:38:39 2014 by ELM ver.2012-10-06 from 001\_\_elm20141206\_132434\_\_dat00.bin



Channel 0  
mn: -6467  
mx: 4835  
 $\mu$ : -11.9  
 $\sigma$ : 101.3

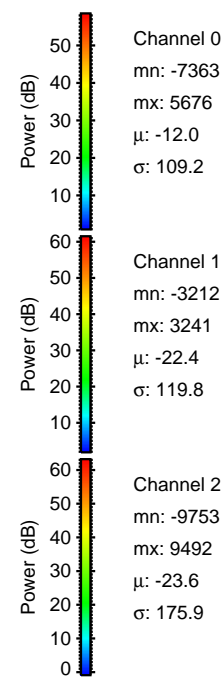
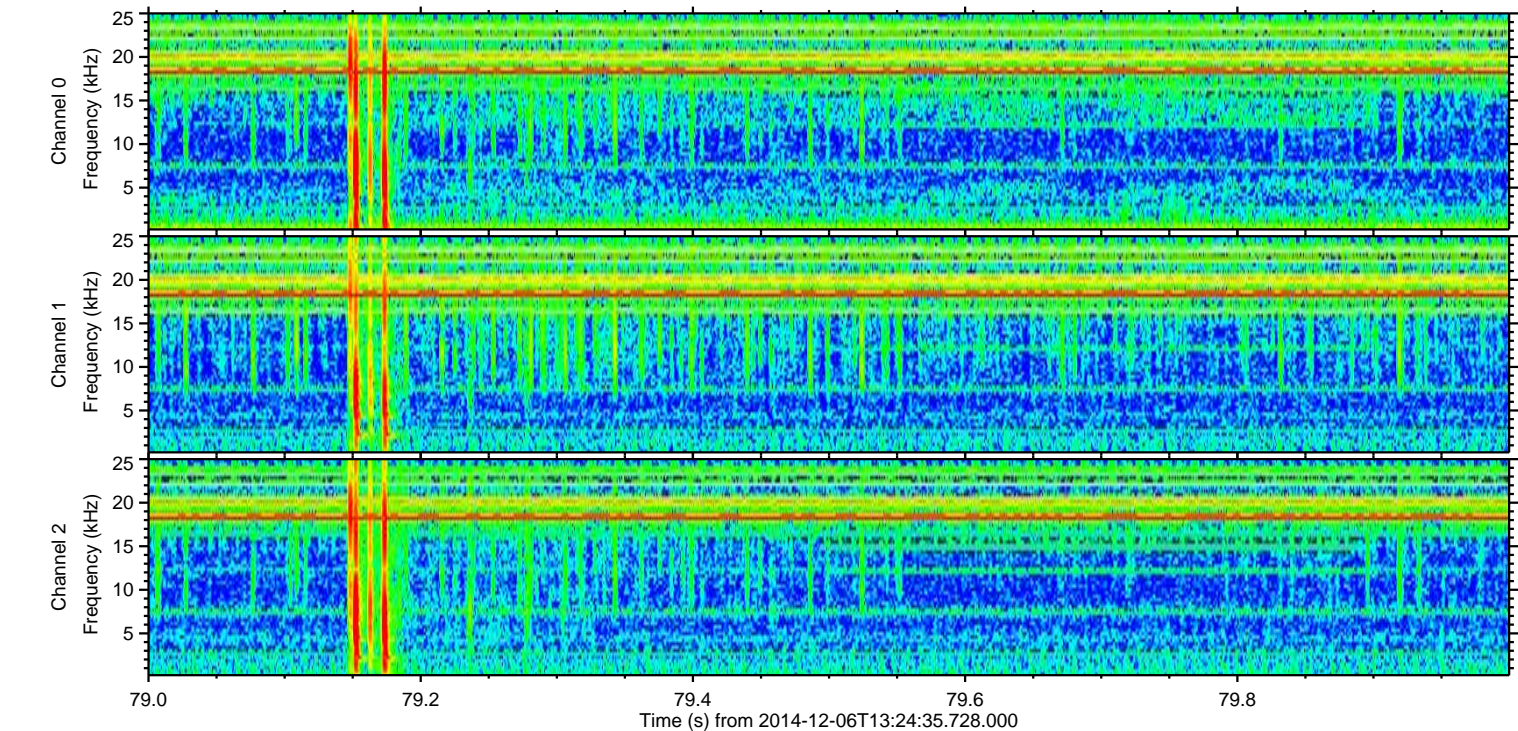
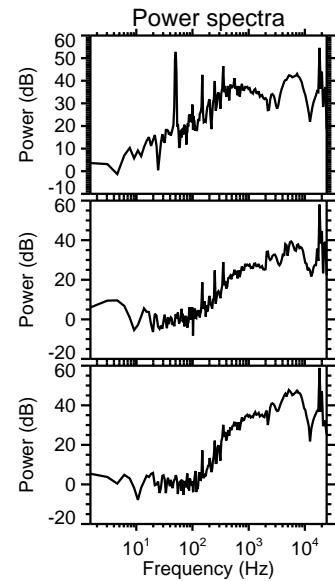
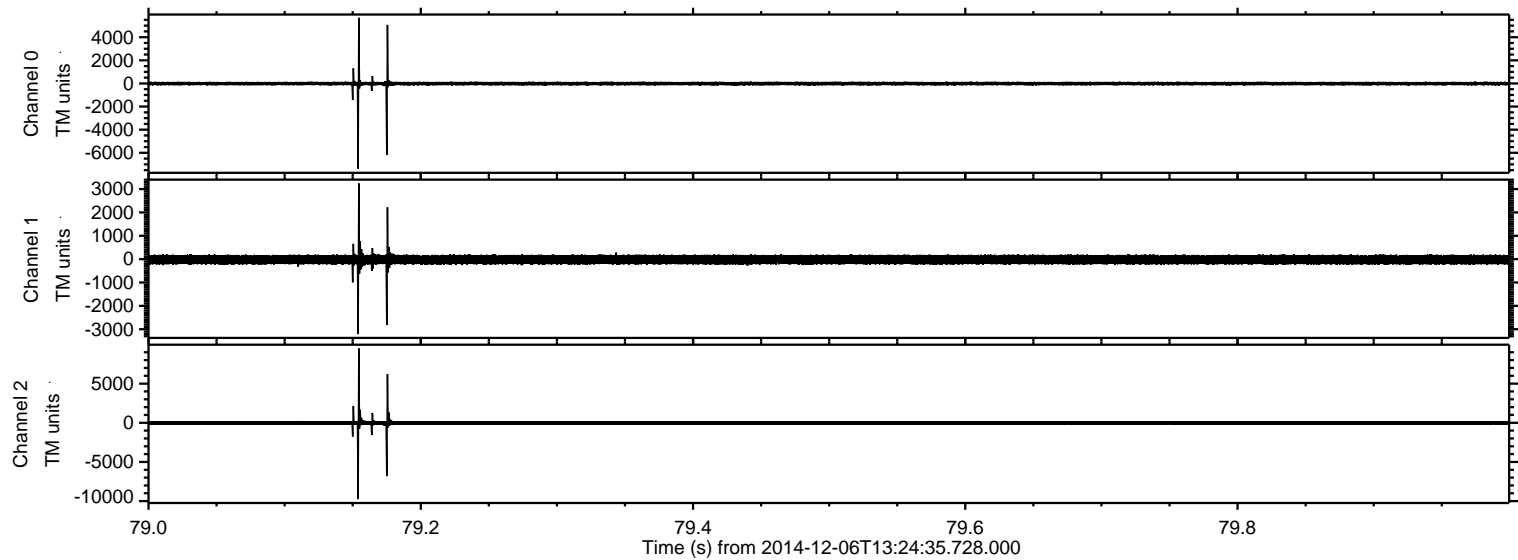
Channel 1  
mn: -4117  
mx: 3868  
 $\mu$ : -22.4  
 $\sigma$ : 118.5

Channel 2  
mn: -9400  
mx: 11232  
 $\mu$ : -23.6  
 $\sigma$ : 164.9



ELMAVAN 3D WAVEFORMS (Measured data sampled at 50 kHz) 49677 packets of 144 samples from 2014-12-06T13:24:35.728.000. Part 80/144

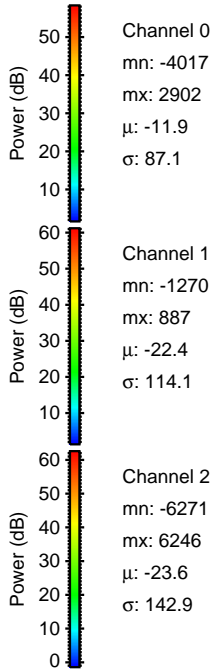
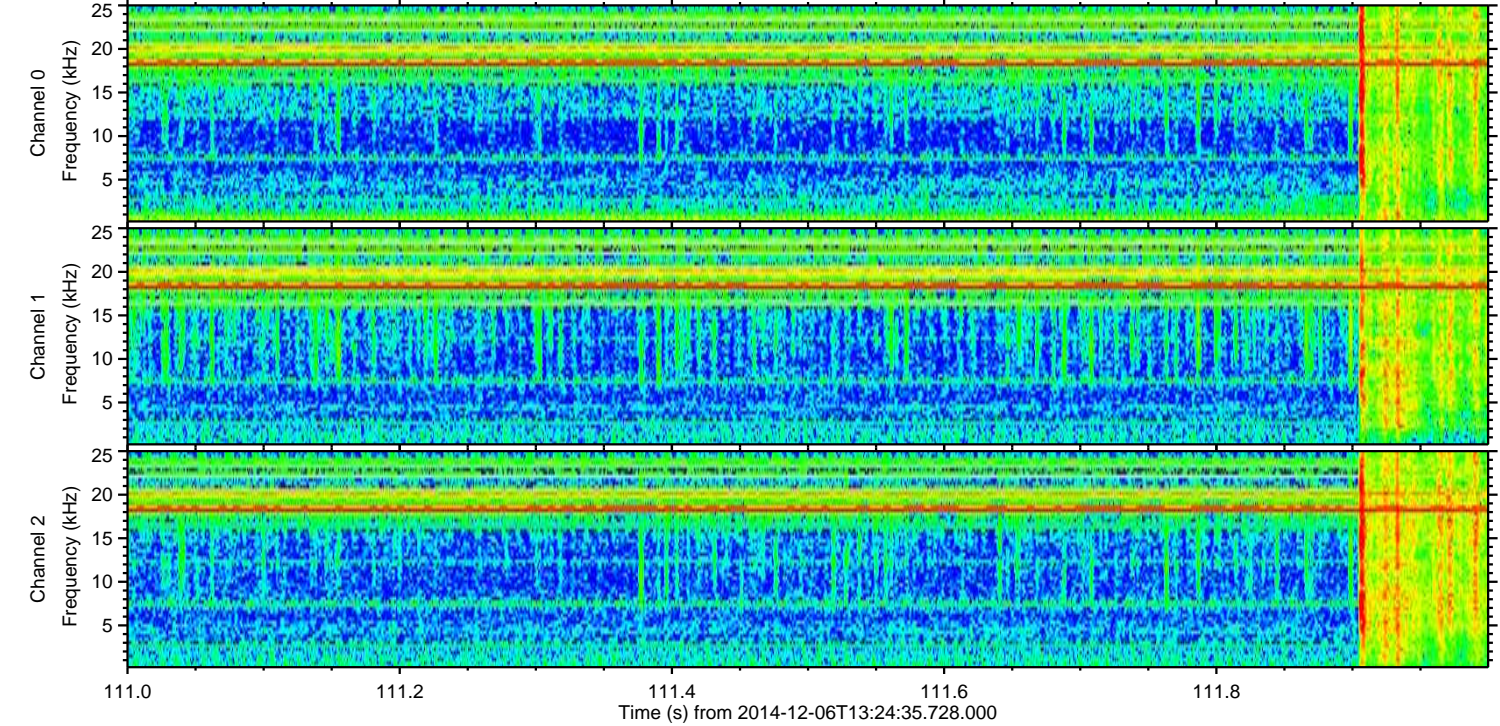
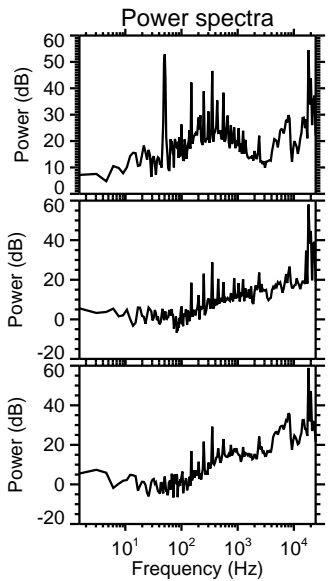
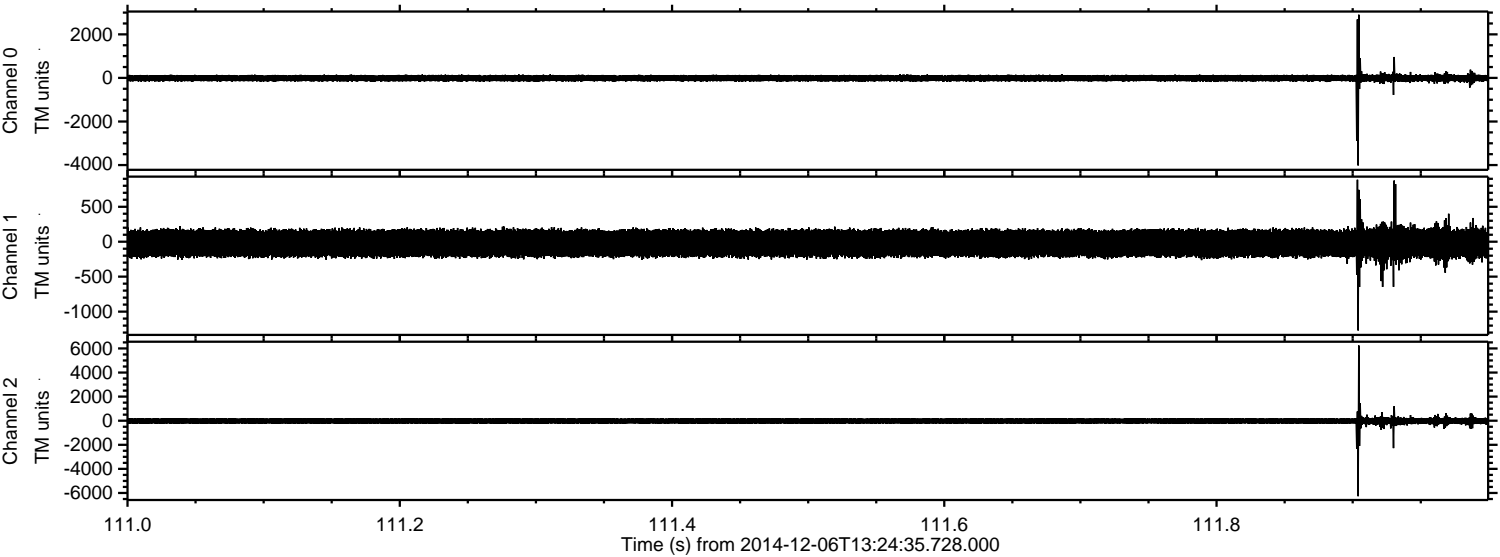
Processed Sat Dec 6 14:38:41 2014 by ELM ver.2012-10-06 from 001\_\_elm20141206\_132434\_\_dat00.bin





ELMAVAN 3D WAVEFORMS (Measured data sampled at 50 kHz) 49677 packets of 144 samples from 2014-12-06T13:24:35.728.000. Part 112/144

Processed Sat Dec 6 14:38:42 2014 by ELM ver.2012-10-06 from 001\_\_elm20141206\_132434\_\_dat00.bin



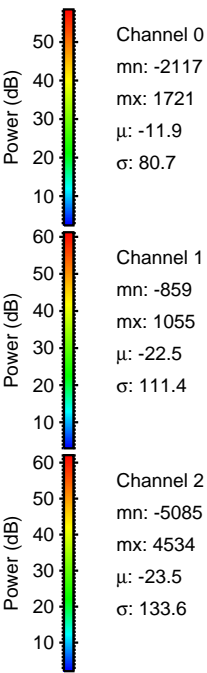
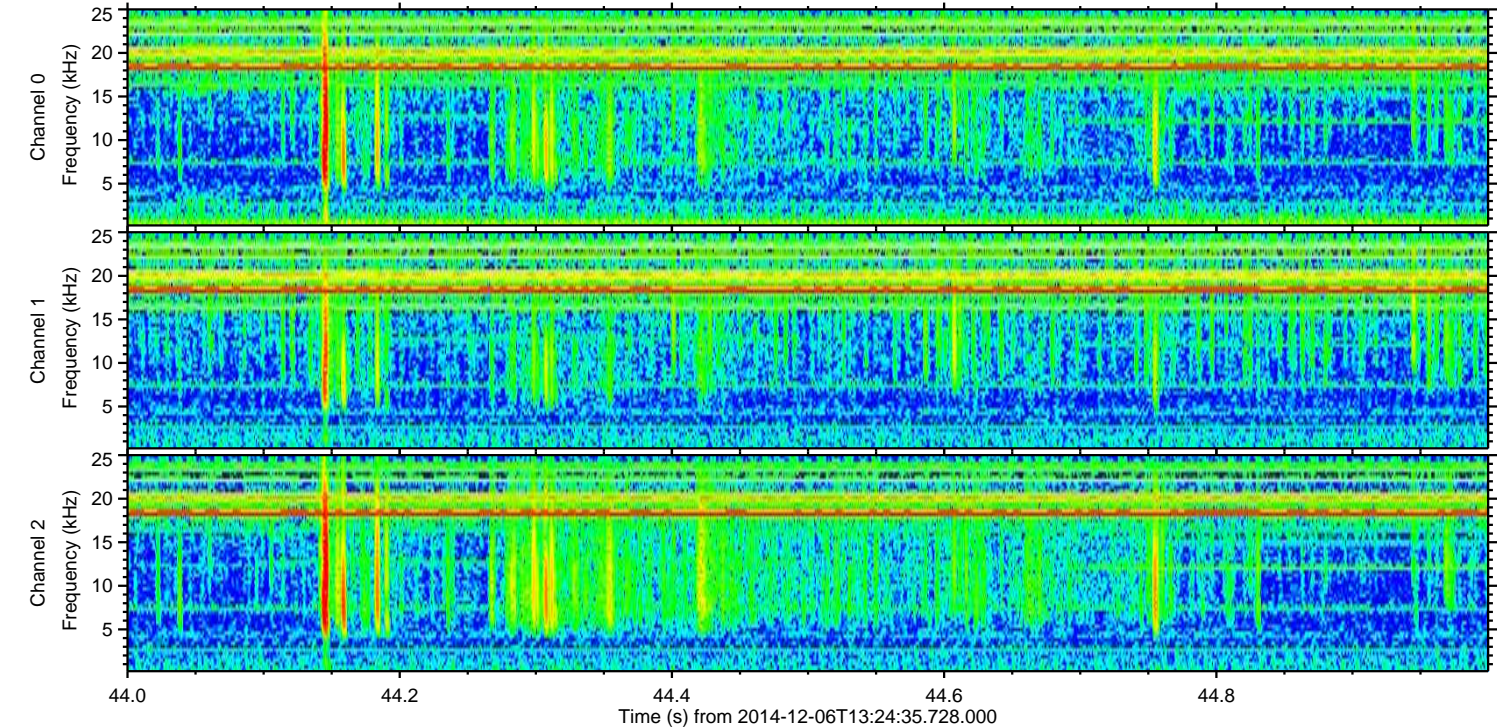
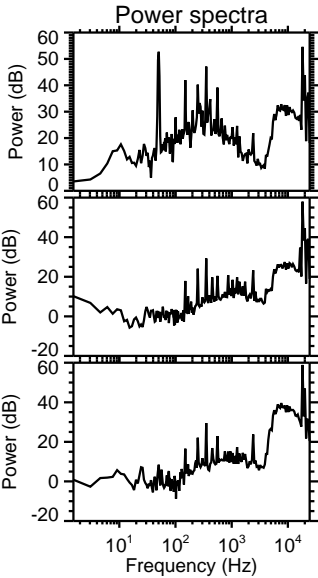
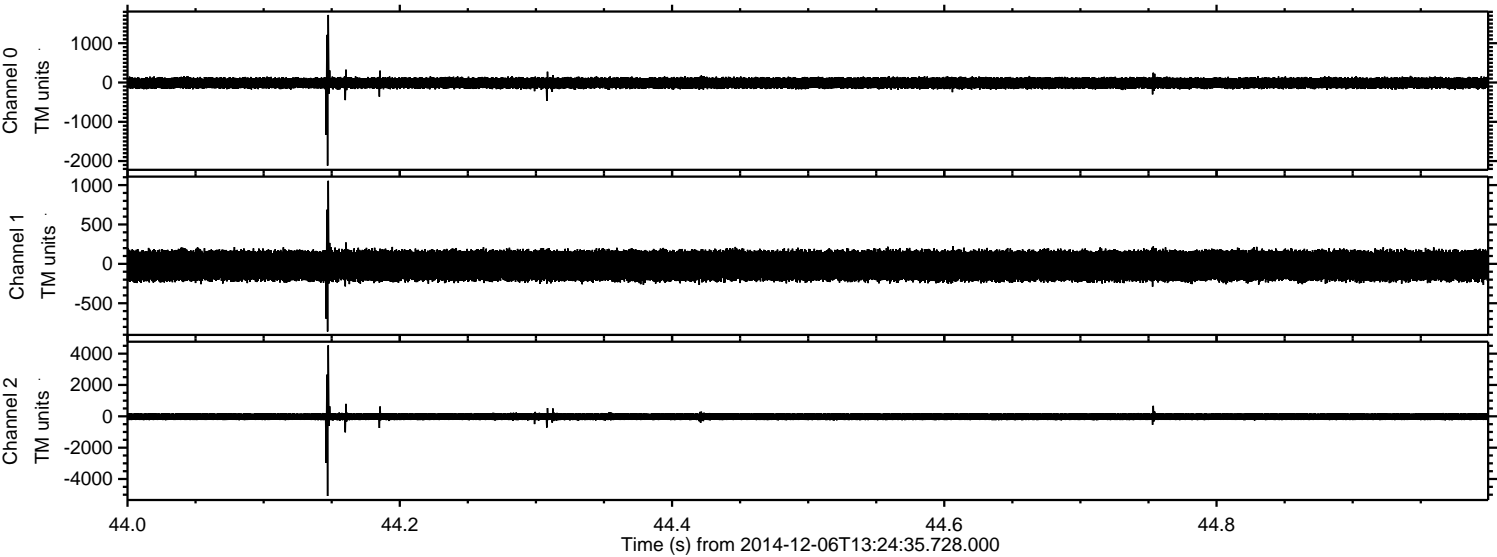
Channel 0  
mn: -4017  
mx: 2902  
 $\mu$ : -11.9  
 $\sigma$ : 87.1

Channel 1  
mn: -1270  
mx: 887  
 $\mu$ : -22.4  
 $\sigma$ : 114.1

Channel 2  
mn: -6271  
mx: 6246  
 $\mu$ : -23.6  
 $\sigma$ : 142.9

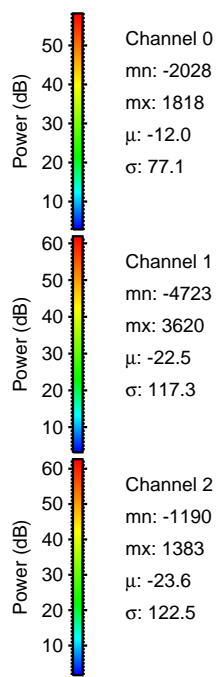
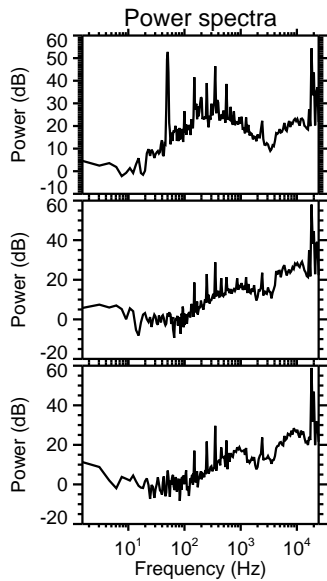
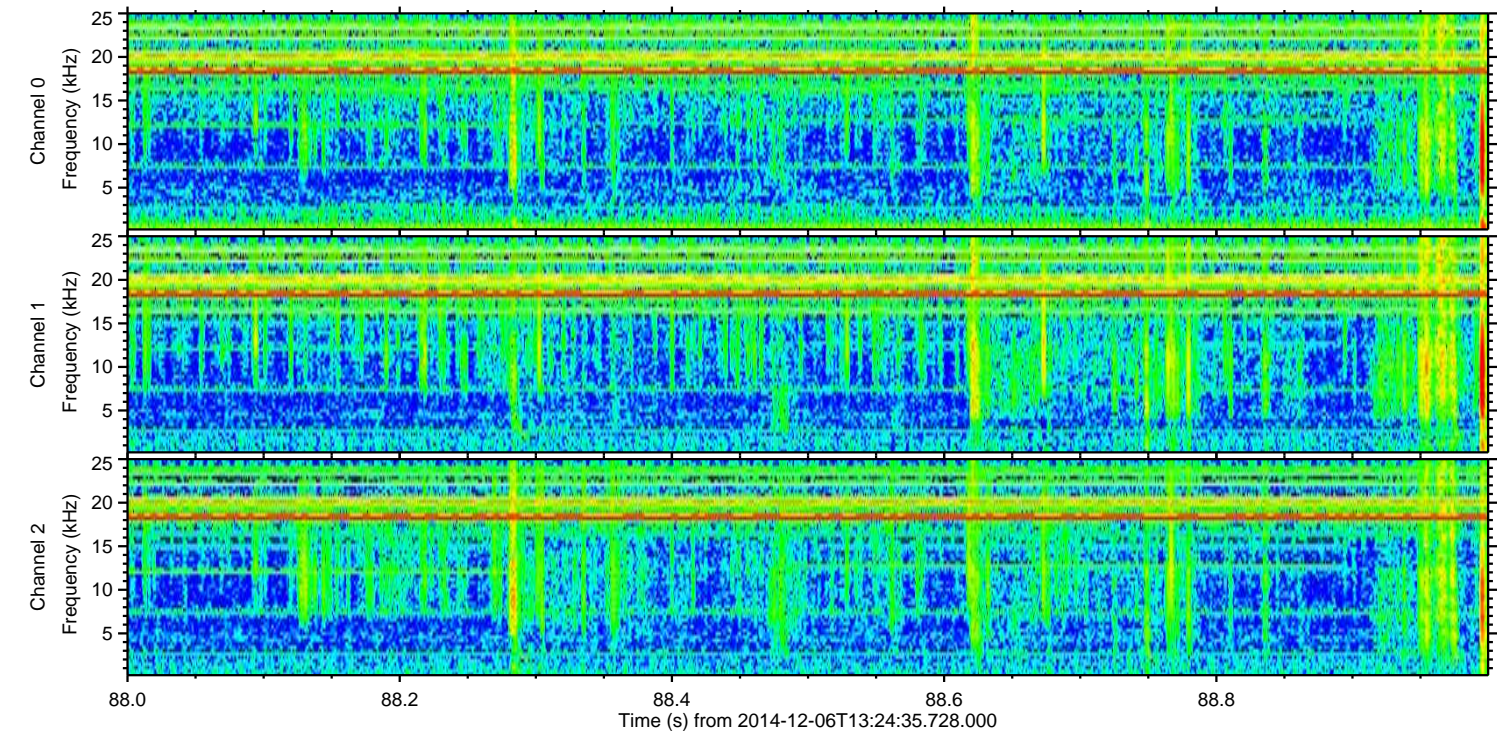
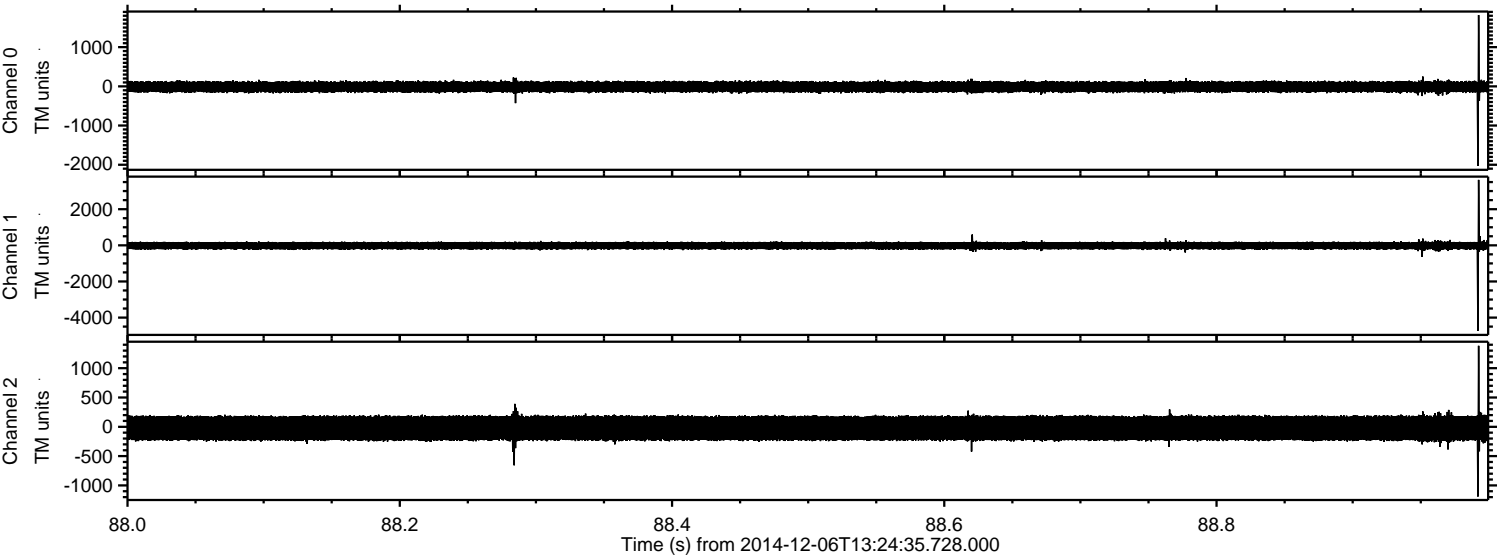


Processed Sat Dec 6 14:38:43 2014 by ELM ver.2012-10-06 from 001\_\_elm20141206\_132434\_\_dat00.bin





Processed Sat Dec 6 14:38:44 2014 by ELM ver.2012-10-06 from 001\_\_elm20141206\_132434\_\_dat00.bin



Power spectra

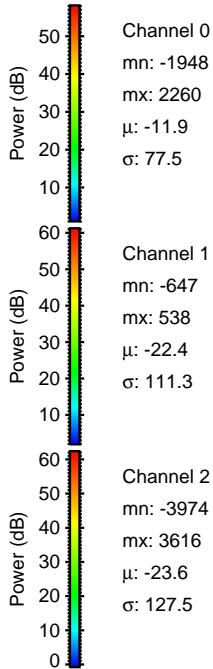
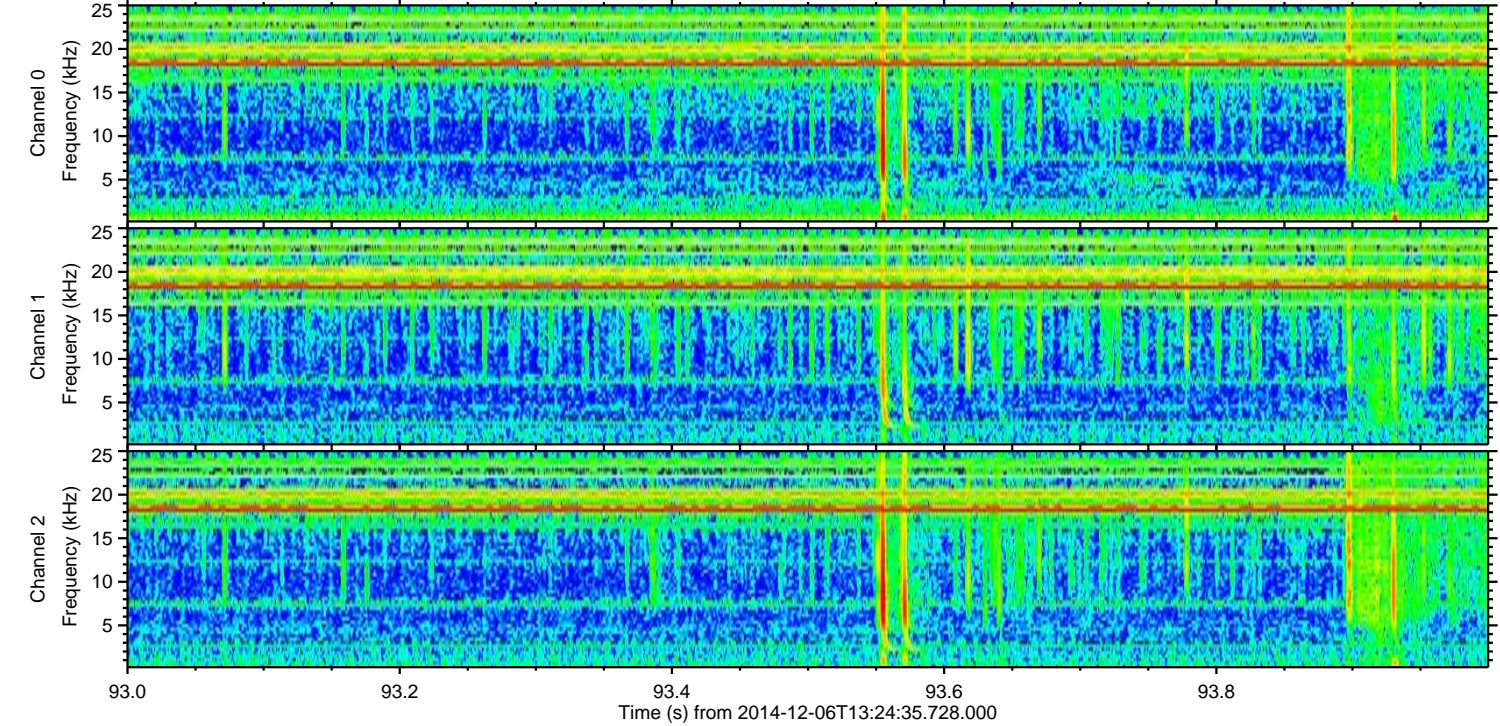
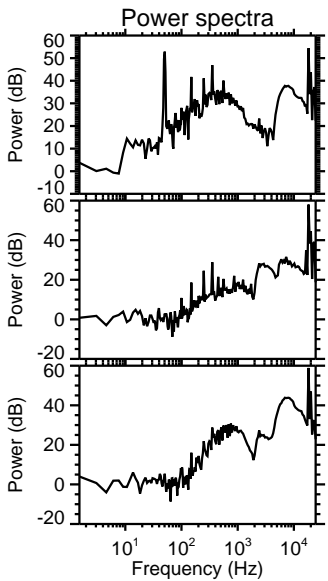
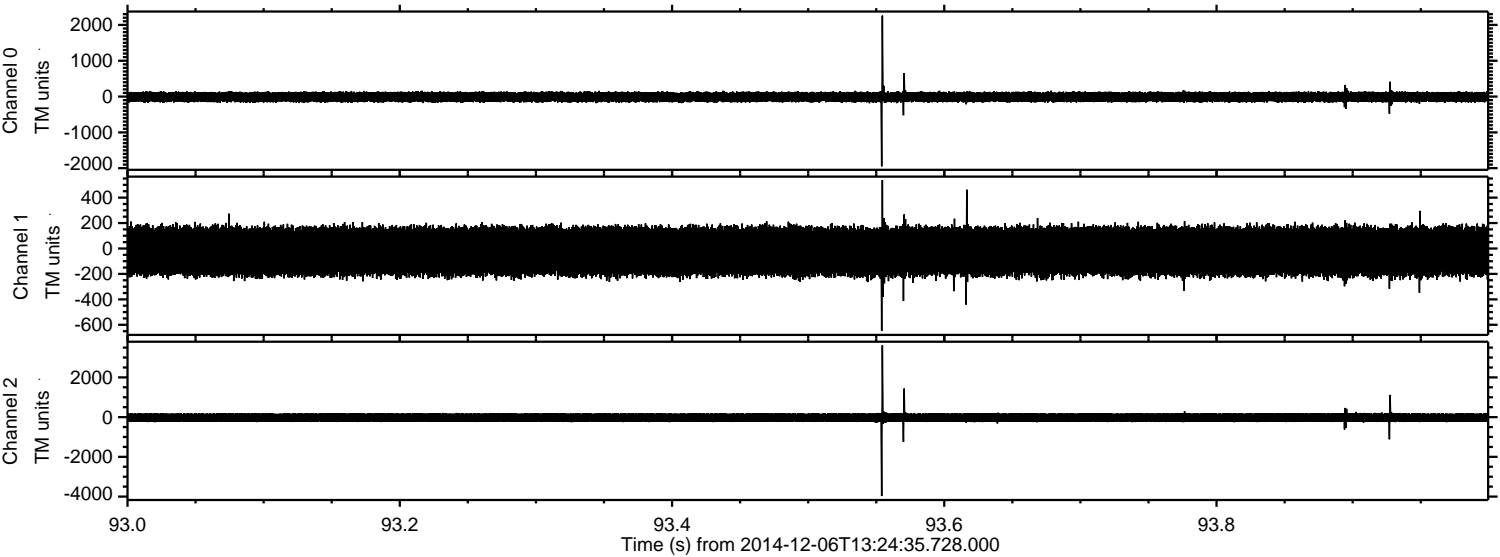
Channel 0  
mn: -2028  
mx: 1818  
 $\mu$ : -12.0  
 $\sigma$ : 77.1

Channel 1  
mn: -4723  
mx: 3620  
 $\mu$ : -22.5  
 $\sigma$ : 117.3

Channel 2  
mn: -1190  
mx: 1383  
 $\mu$ : -23.6  
 $\sigma$ : 122.5

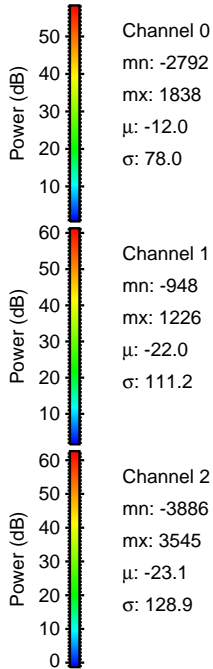
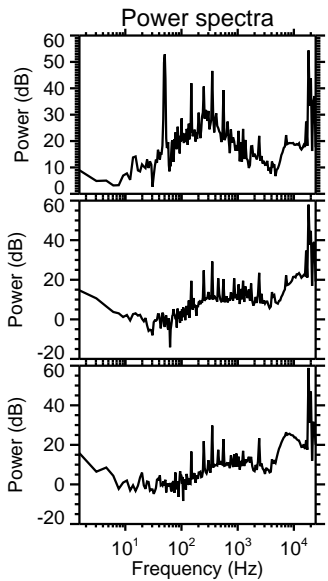
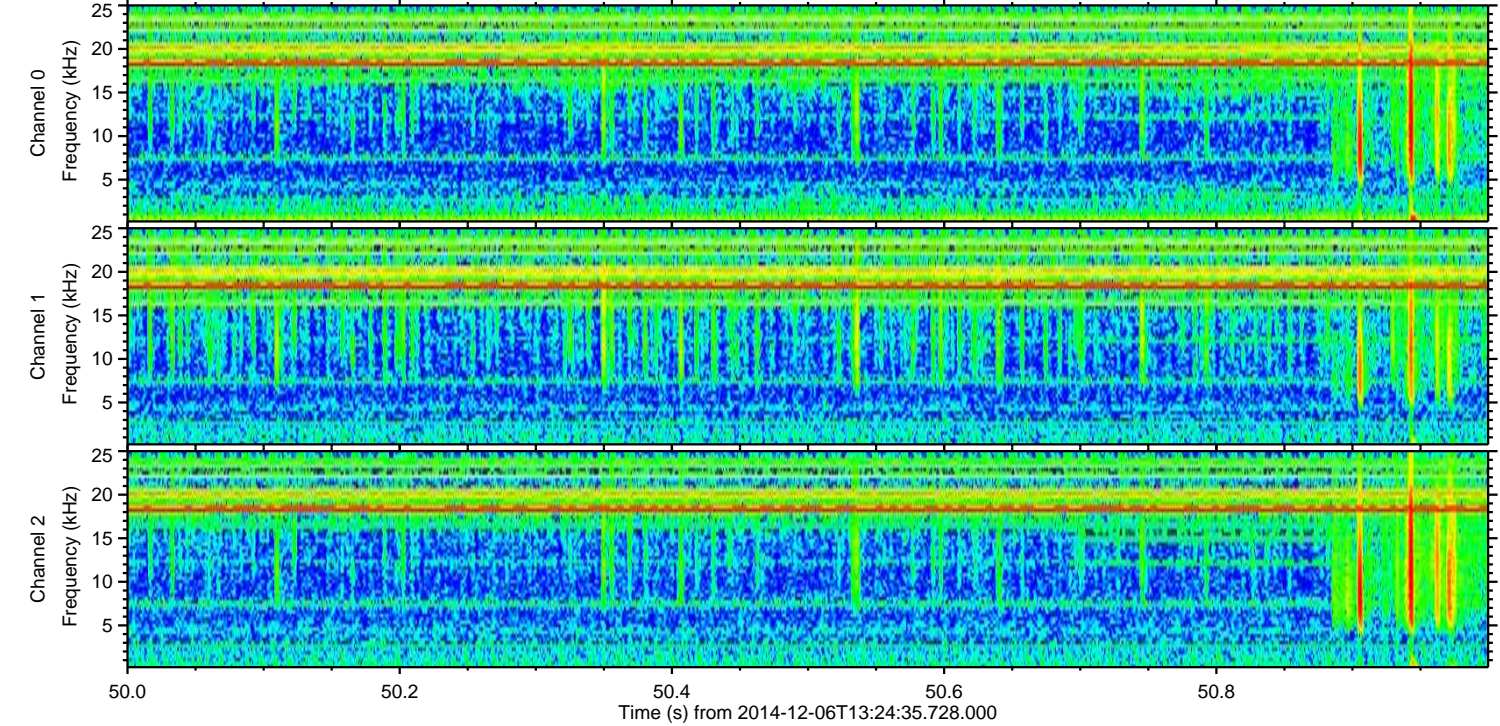
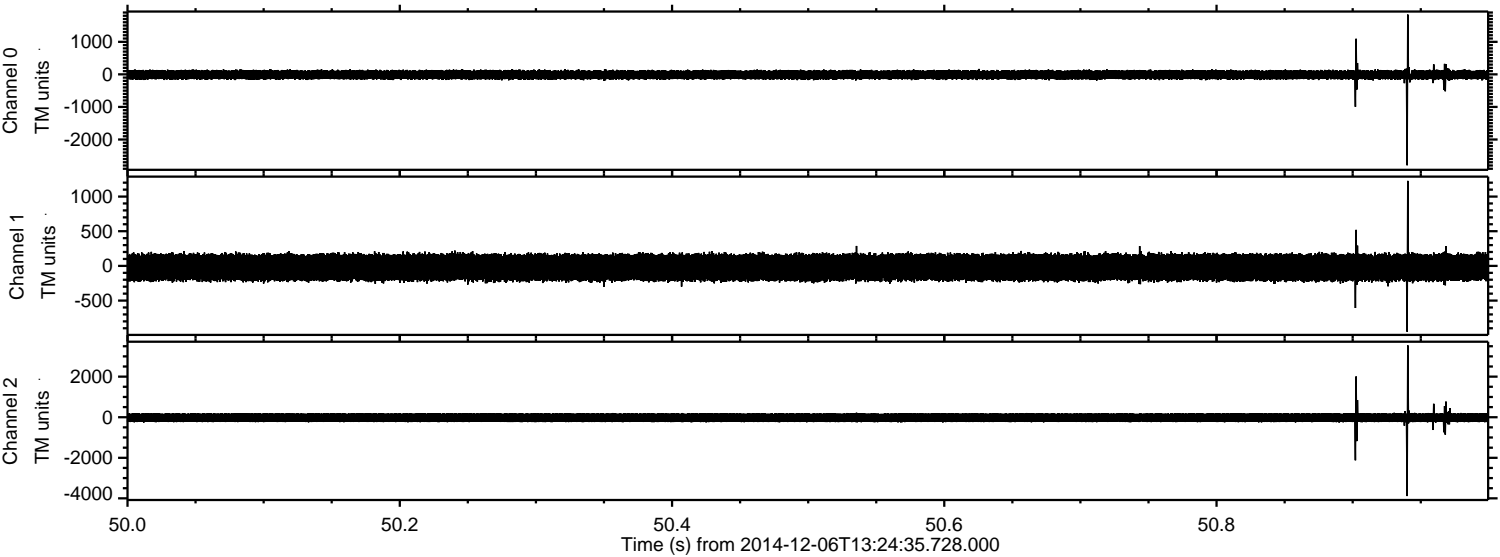


Processed Sat Dec 6 14:38:45 2014 by ELM ver.2012-10-06 from 001\_\_elm20141206\_132434\_\_dat00.bin





Processed Sat Dec 6 14:38:46 2014 by ELM ver.2012-10-06 from 001\_\_elm20141206\_132434\_\_dat00.bin



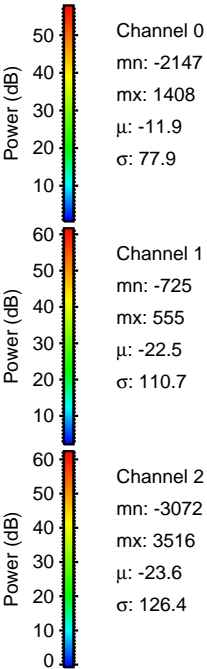
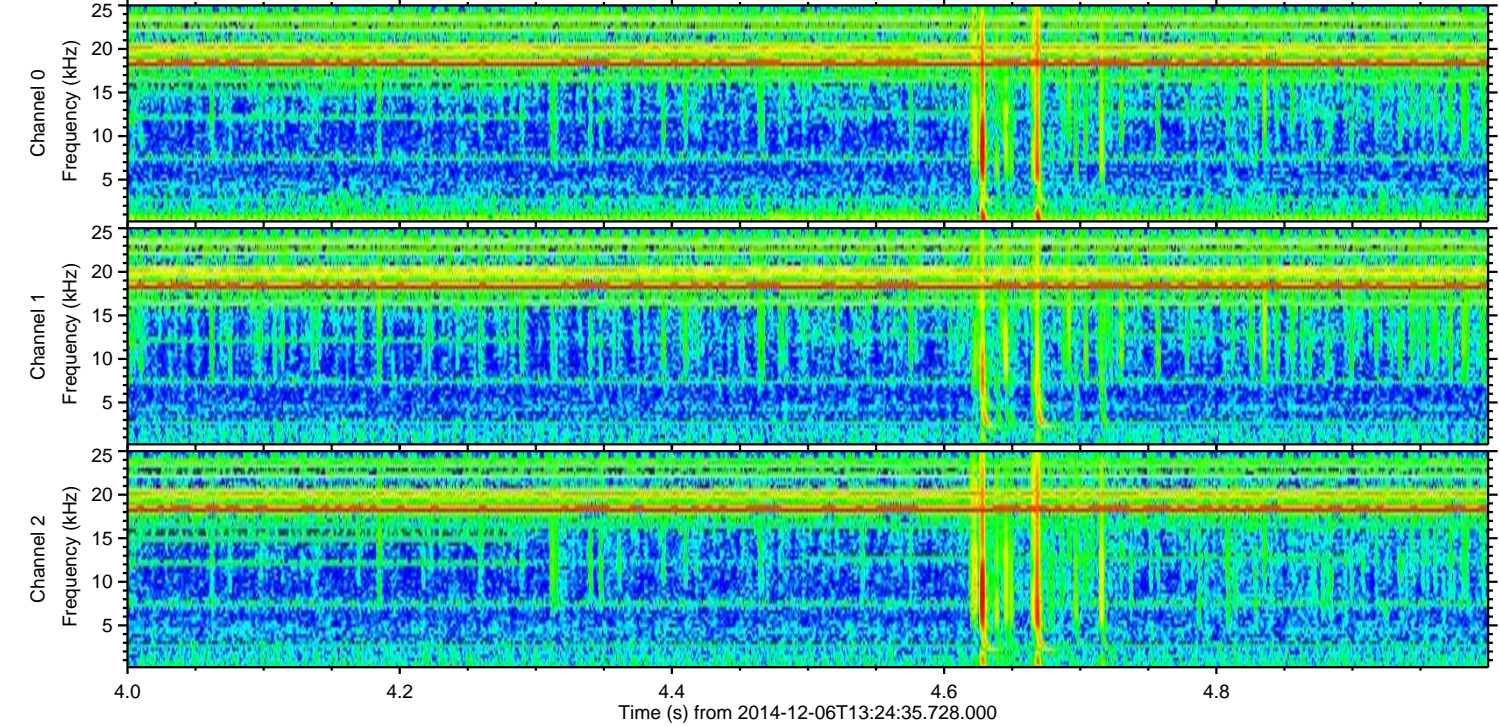
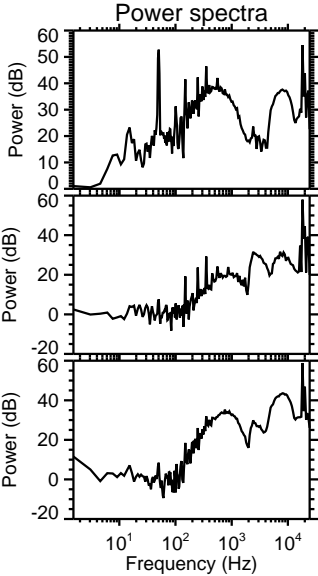
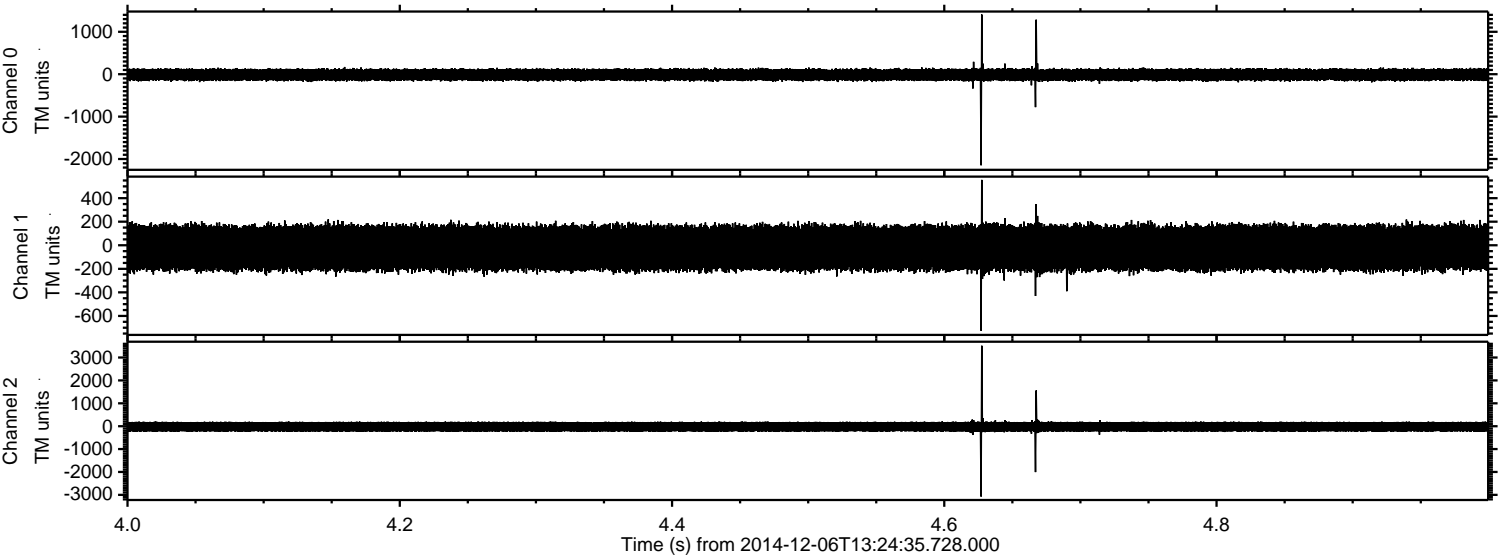
Channel 0  
mn: -2792  
mx: 1838  
 $\mu$ : -12.0  
 $\sigma$ : 78.0

Channel 1  
mn: -948  
mx: 1226  
 $\mu$ : -22.0  
 $\sigma$ : 111.2

Channel 2  
mn: -3886  
mx: 3545  
 $\mu$ : -23.1  
 $\sigma$ : 128.9



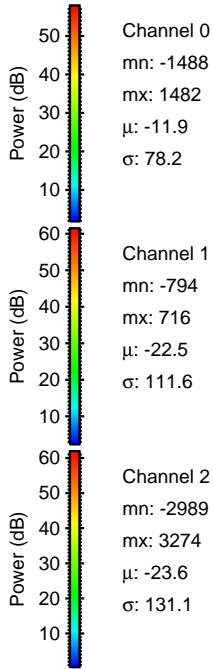
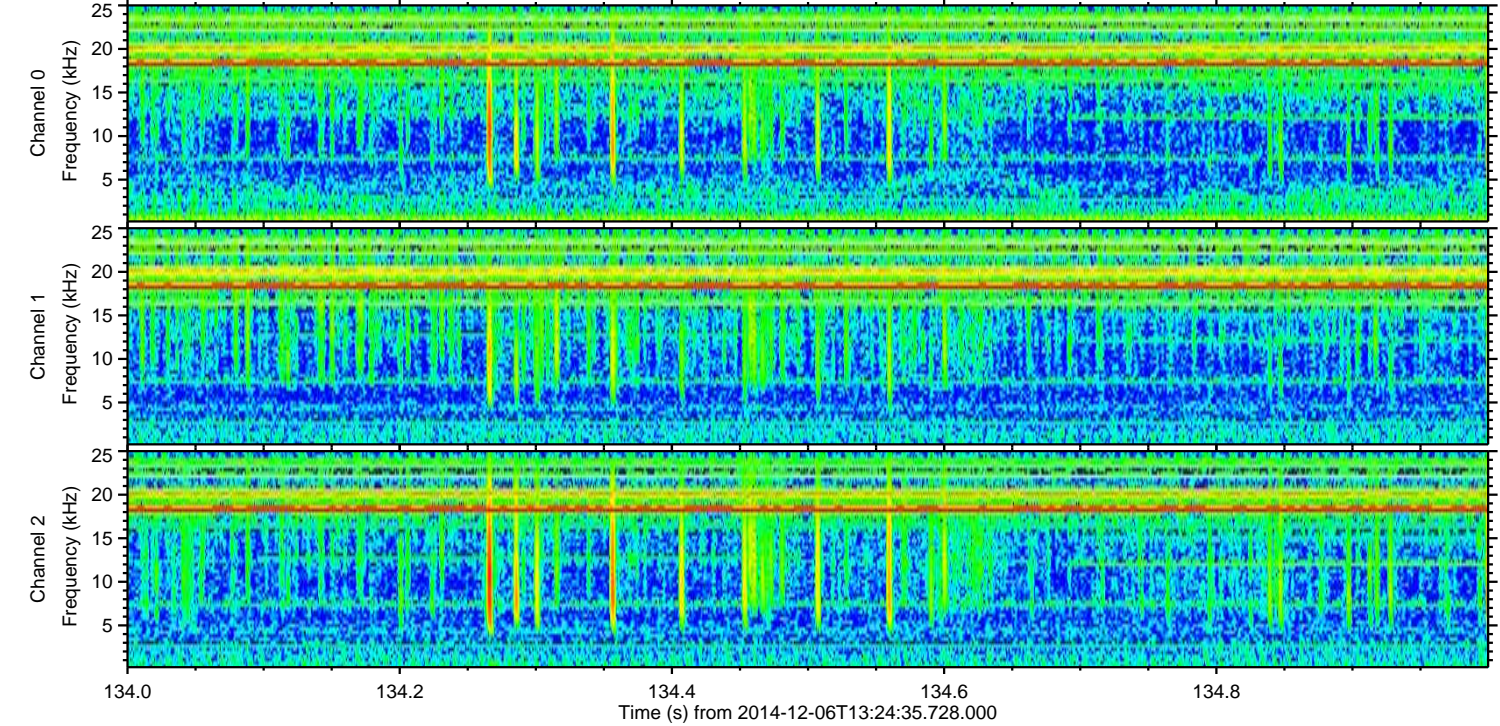
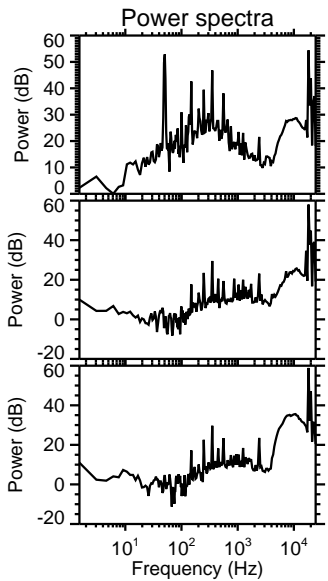
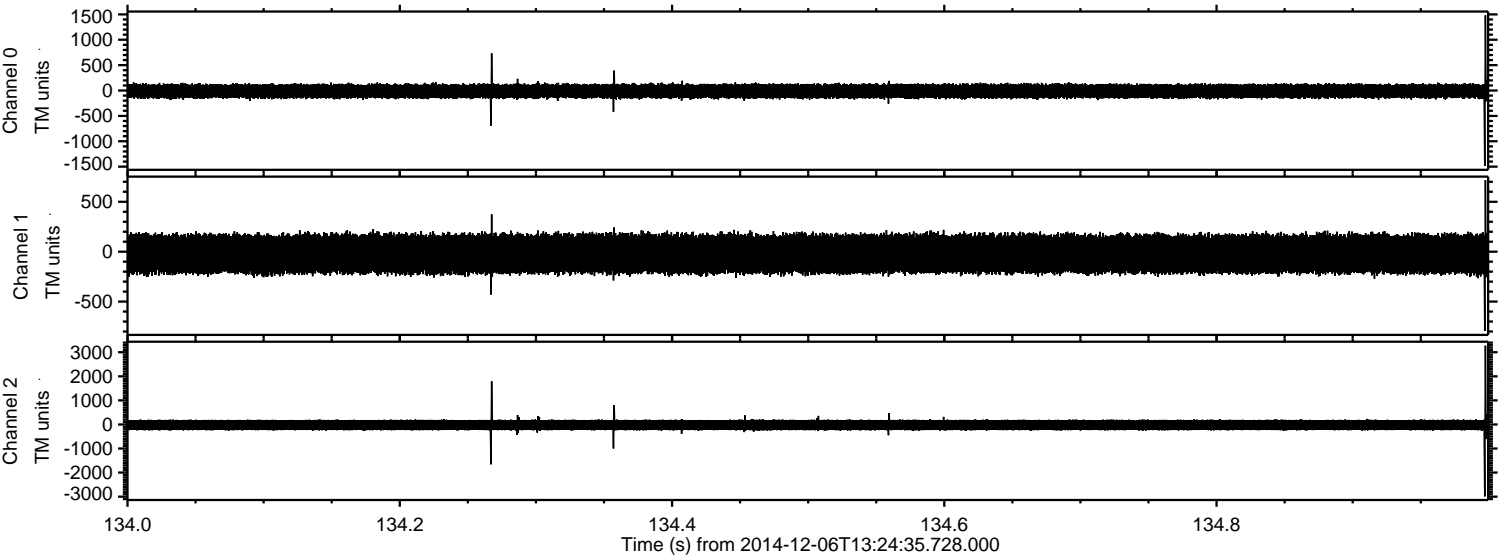
Processed Sat Dec 6 14:38:47 2014 by ELM ver.2012-10-06 from 001\_\_elm20141206\_132434\_\_dat00.bin





ELMAVAN 3D WAVEFORMS (Measured data sampled at 50 kHz) 49677 packets of 144 samples from 2014-12-06T13:24:35.728.000. Part 135/144

Processed Sat Dec 6 14:38:48 2014 by ELM ver.2012-10-06 from 001\_\_elm20141206\_132434\_\_dat00.bin





Processed Sat Dec 6 14:38:48 2014 by ELM ver.2012-10-06 from 001\_\_elm20141206\_132434\_\_dat00.bin

