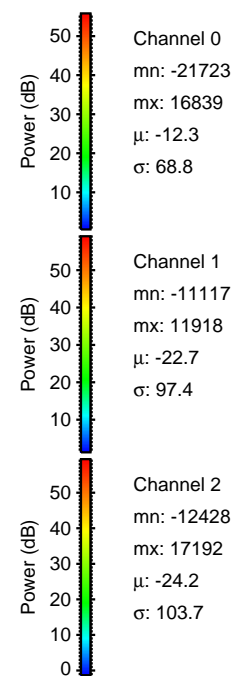
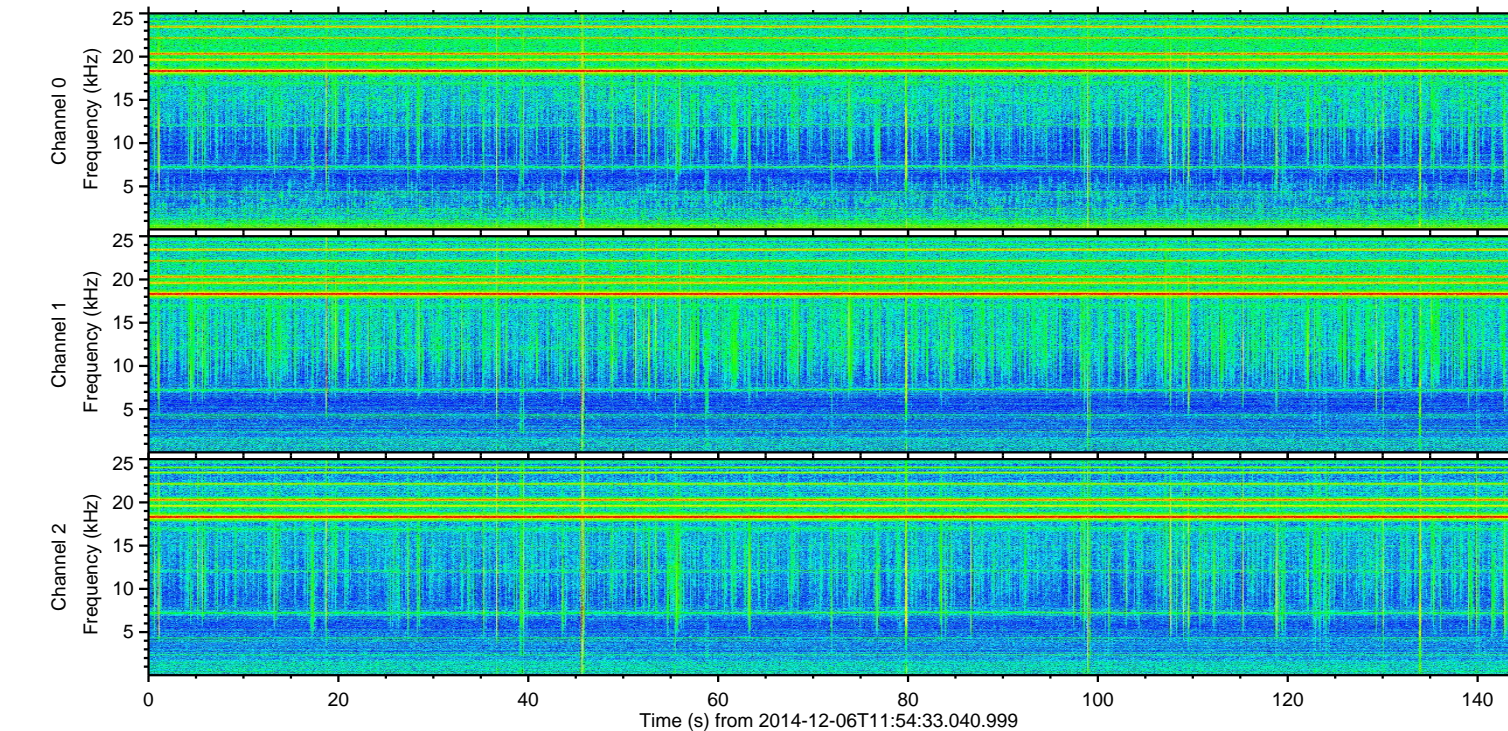
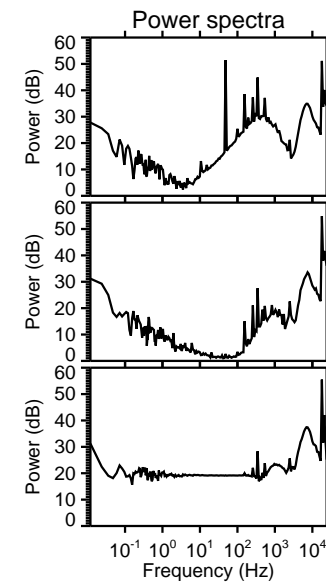
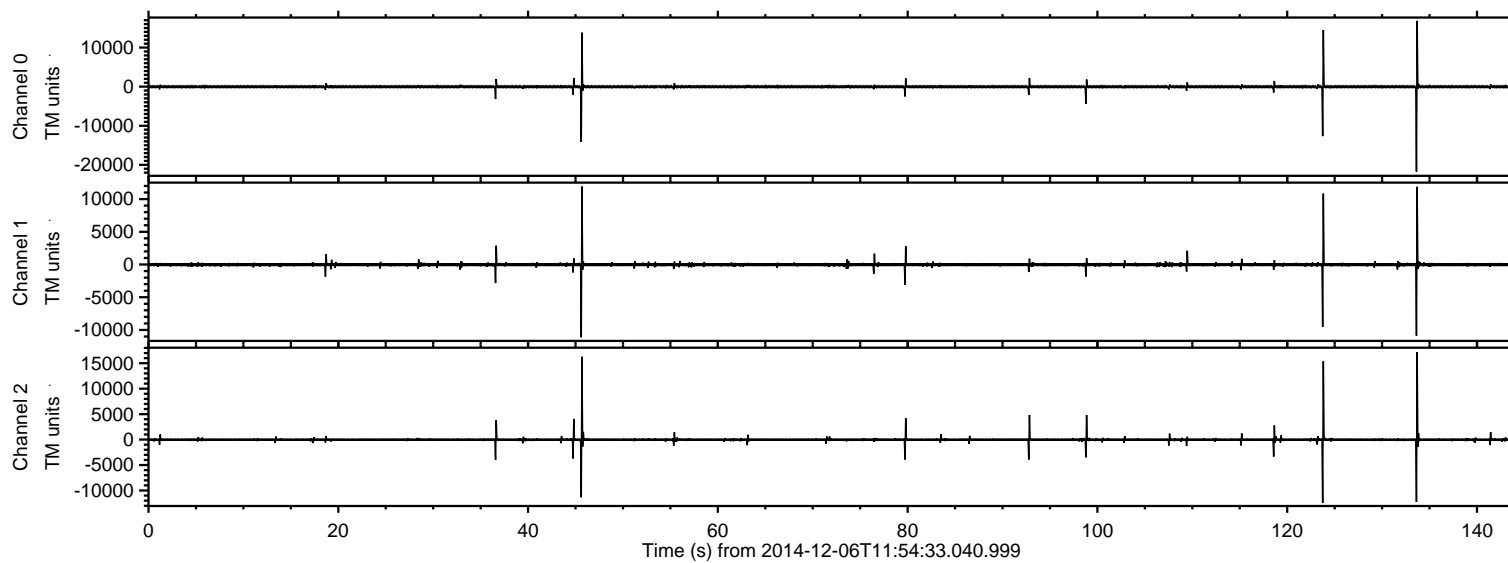


# ELMAVAN 3D WAVEFORMS (Measured data sampled at 50 kHz) 49788 packets of 144 samples from 2014-12-06T11:54:33.040.999.

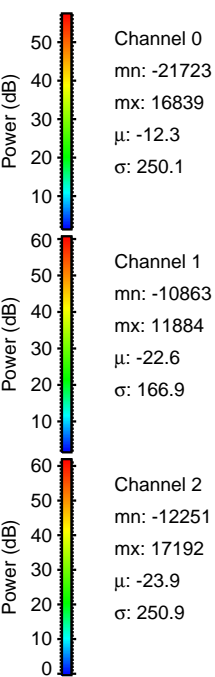
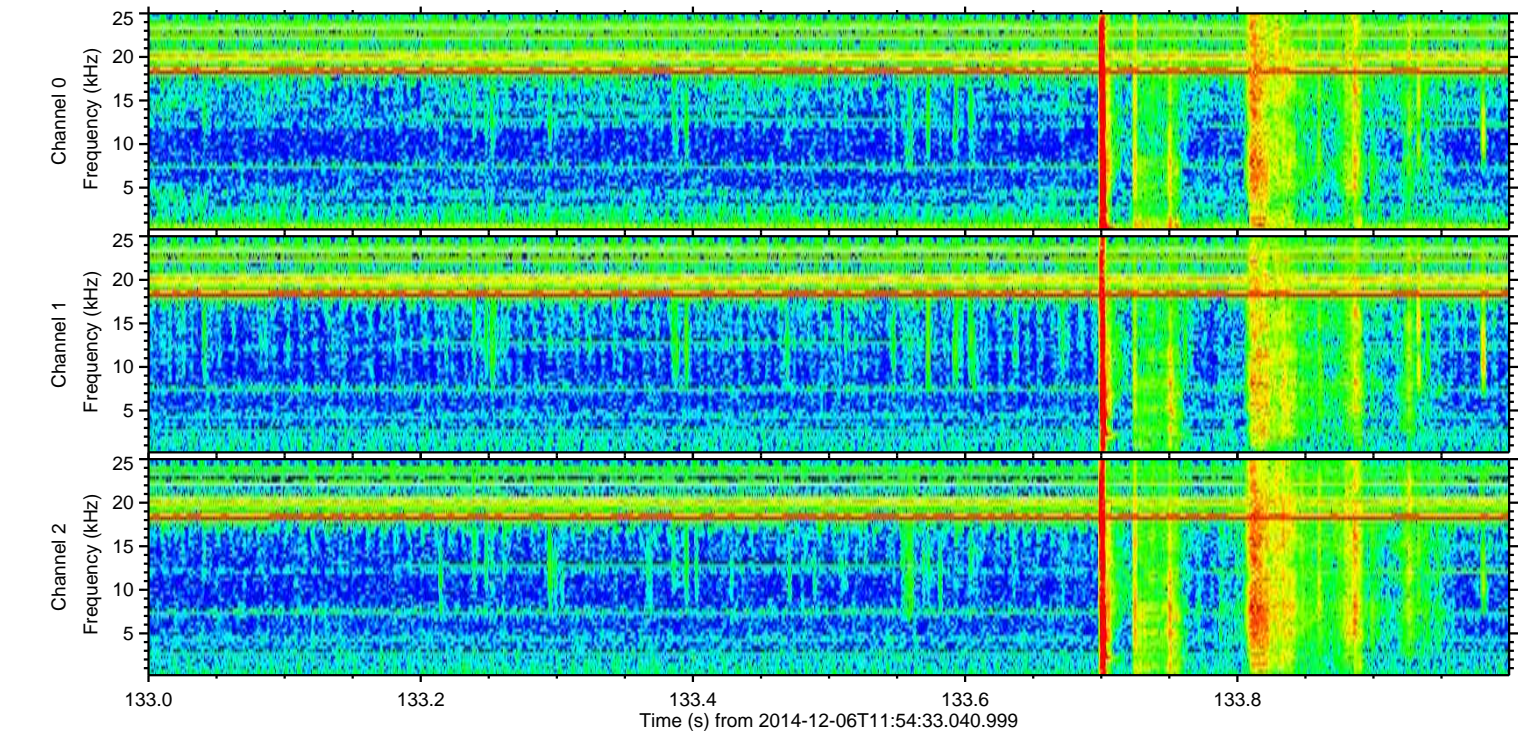
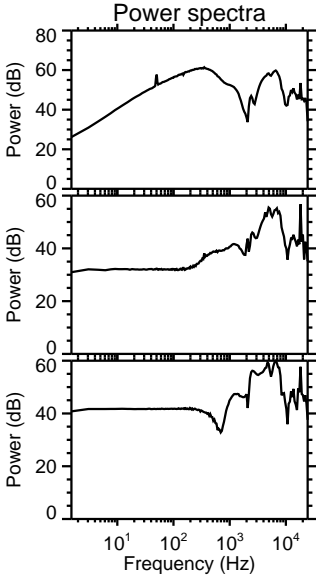
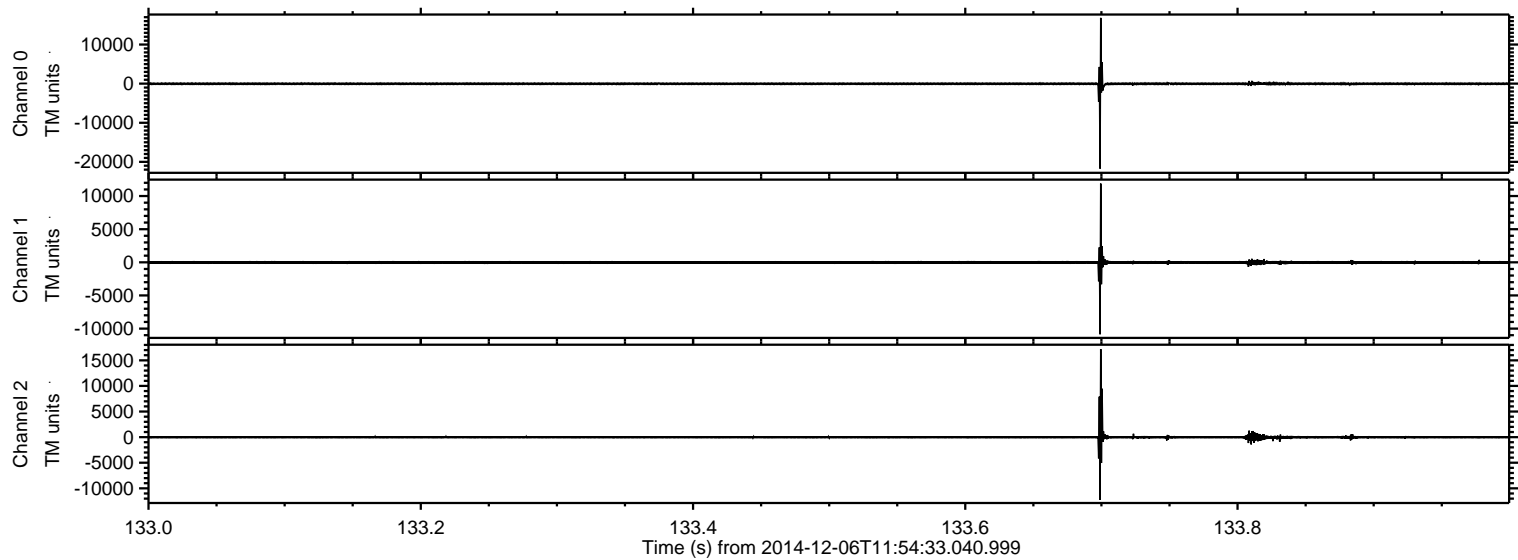
Processed Sat Dec 6 13:03:40 2014 by ELM ver.2012-10-06 from 001\_\_elm20141206\_115432\_\_dat00.bin





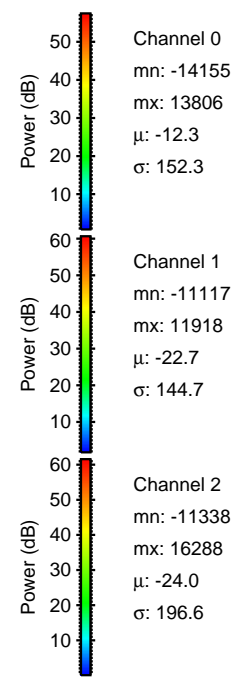
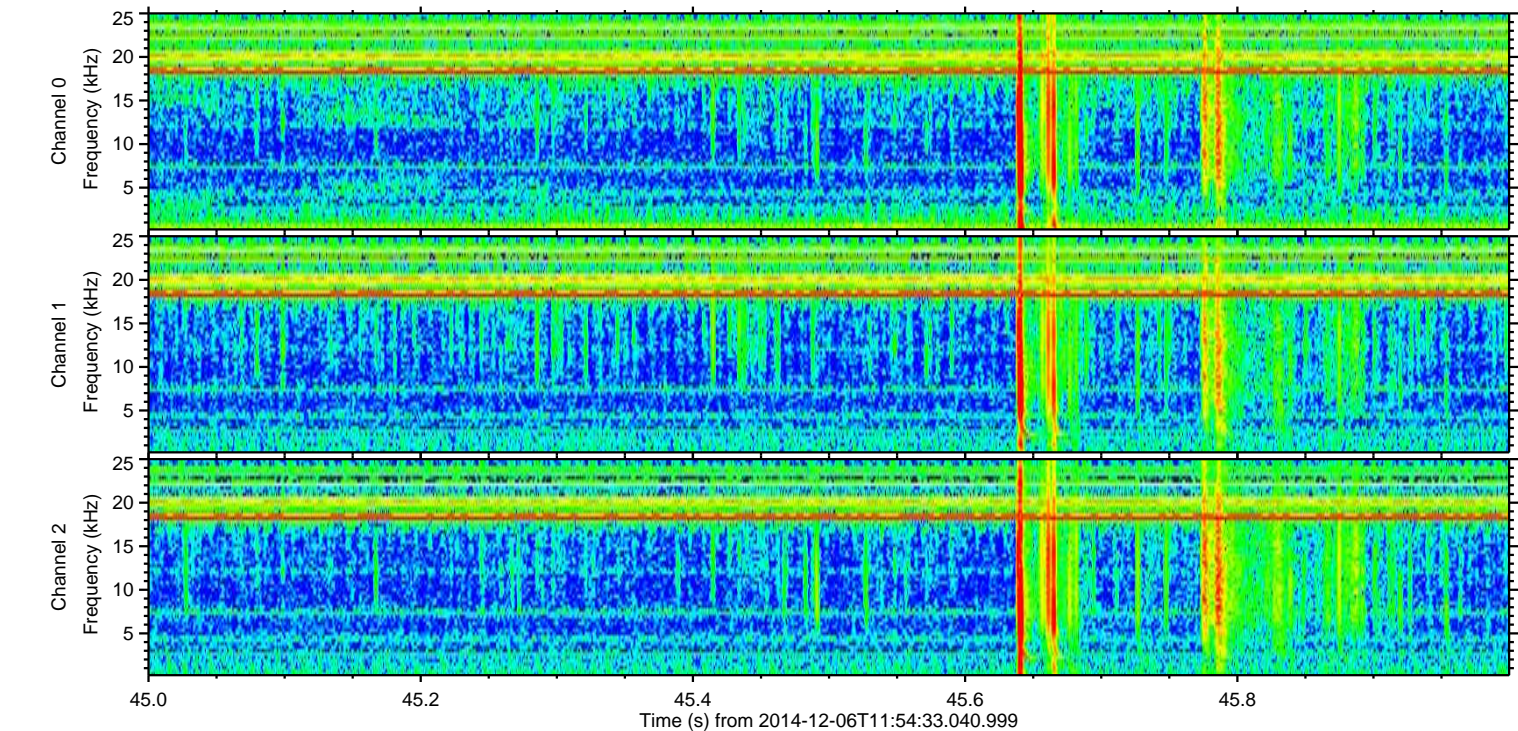
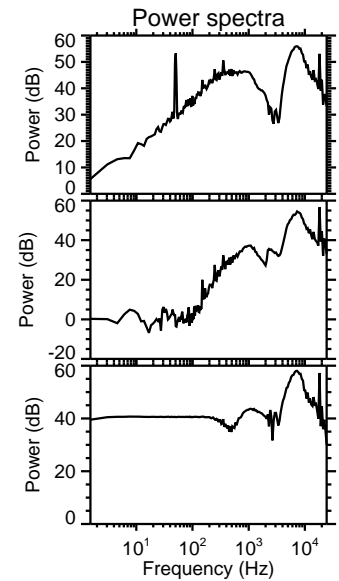
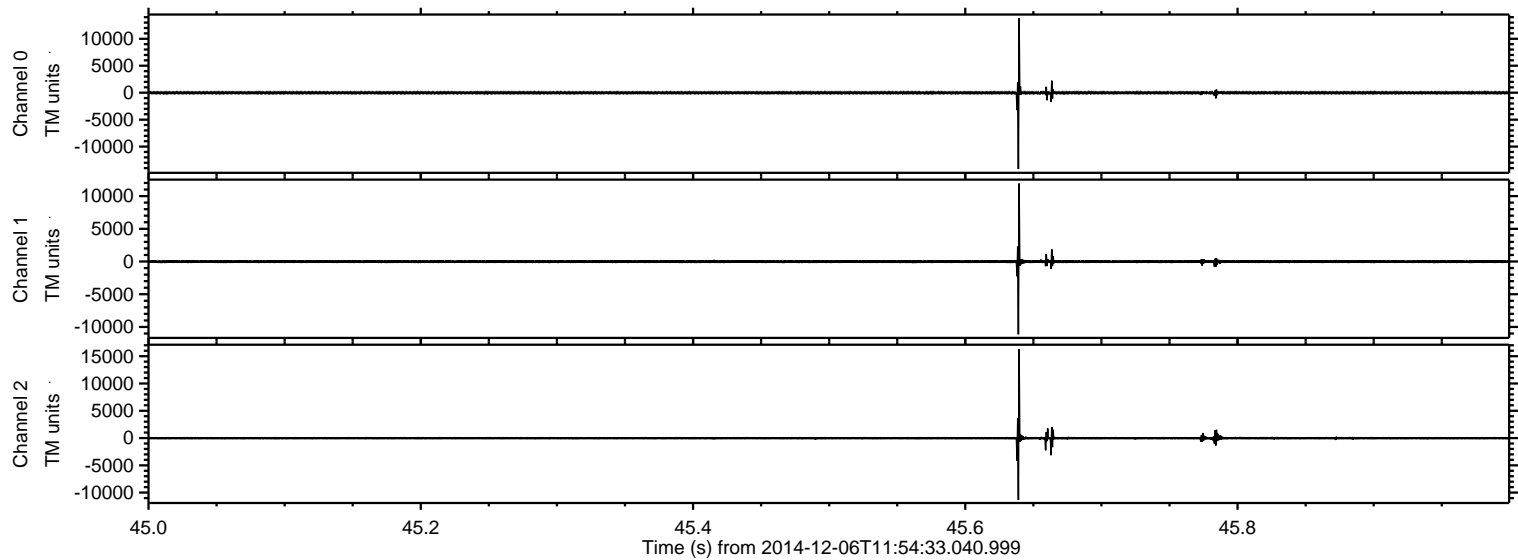
ELMAVAN 3D WAVEFORMS (Measured data sampled at 50 kHz) 49788 packets of 144 samples from 2014-12-06T11:54:33.040.999. Part 134/144

Processed Sat Dec 6 13:03:52 2014 by ELM ver.2012-10-06 from 001\_\_elm20141206\_115432\_\_dat00.bin



ELMAVAN 3D WAVEFORMS (Measured data sampled at 50 kHz) 49788 packets of 144 samples from 2014-12-06T11:54:33.040.999. Part 46/144

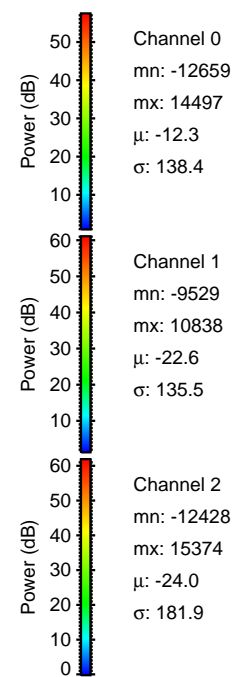
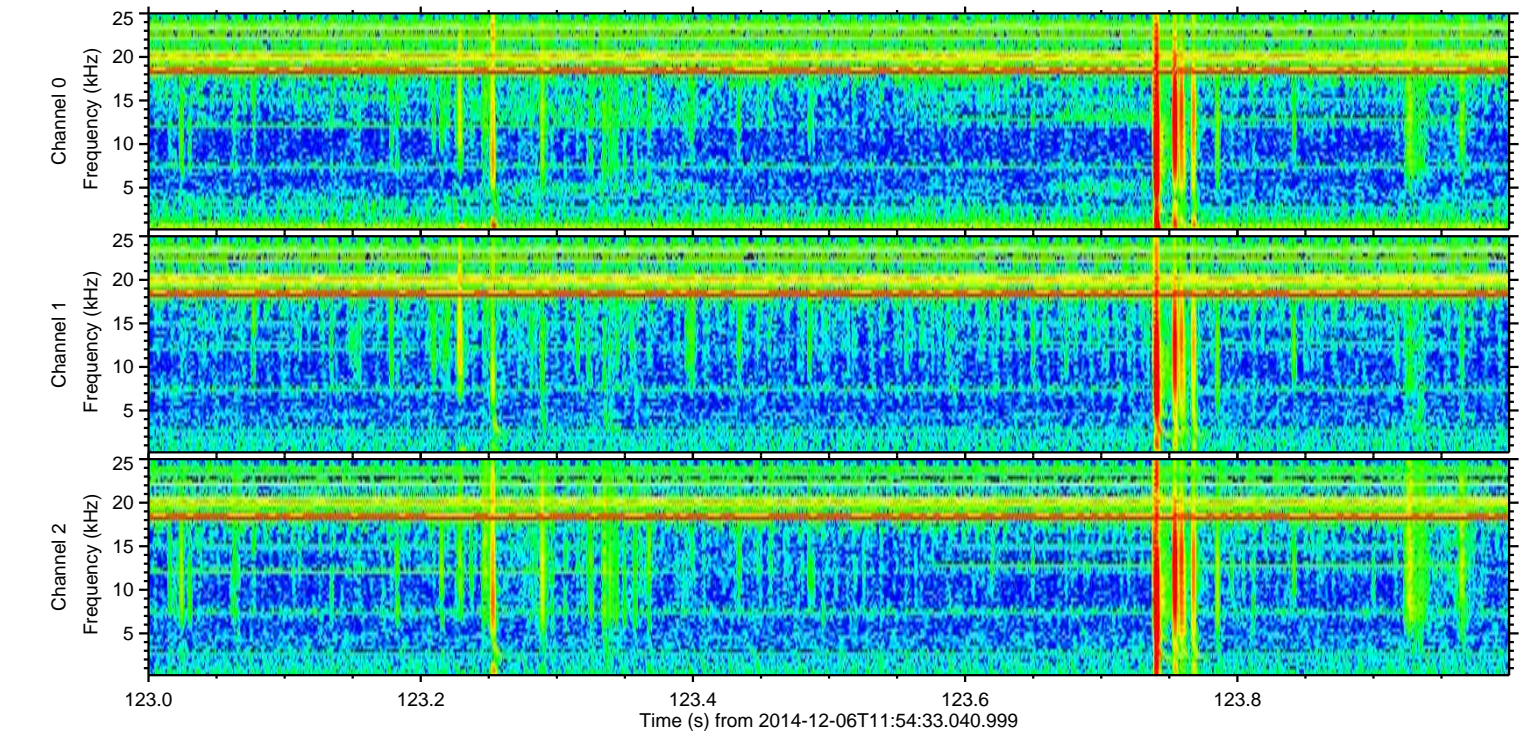
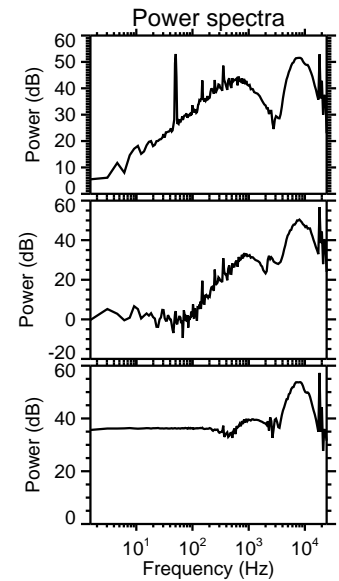
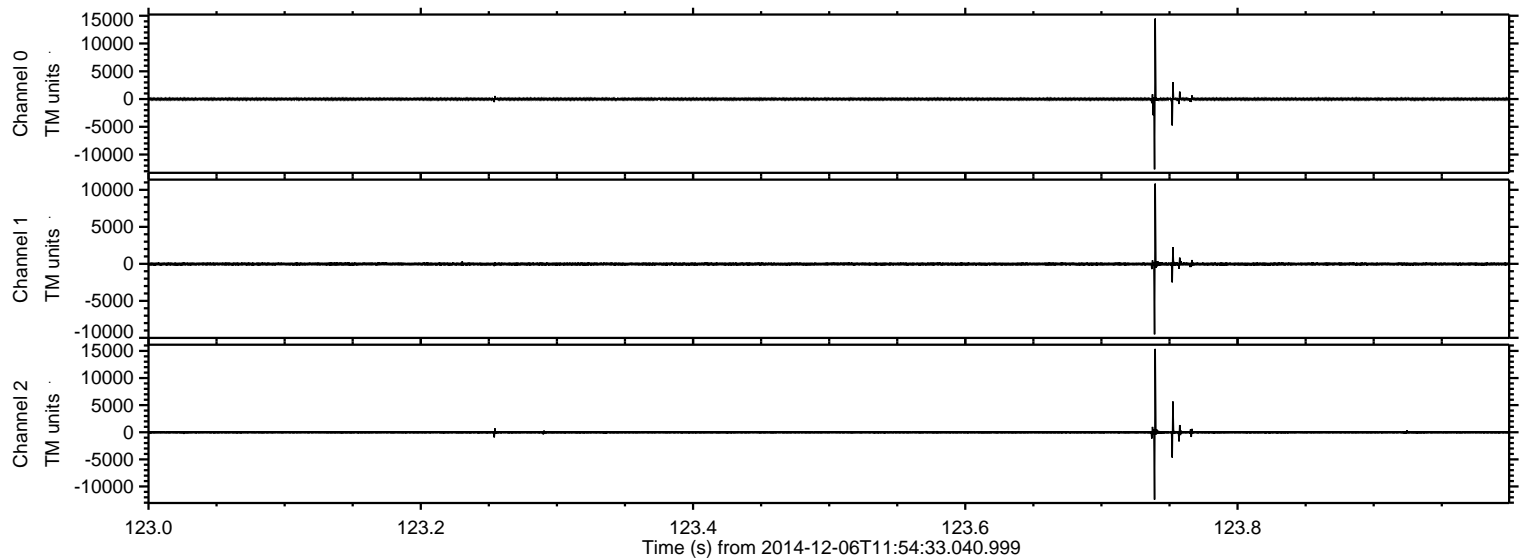
Processed Sat Dec 6 13:03:53 2014 by ELM ver.2012-10-06 from 001\_\_elm20141206\_115432\_\_dat00.bin





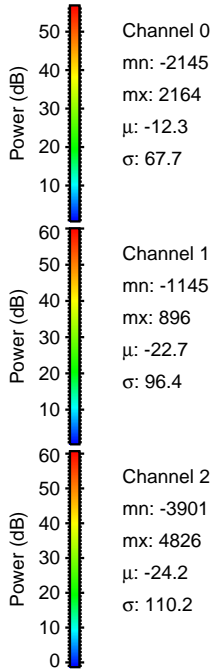
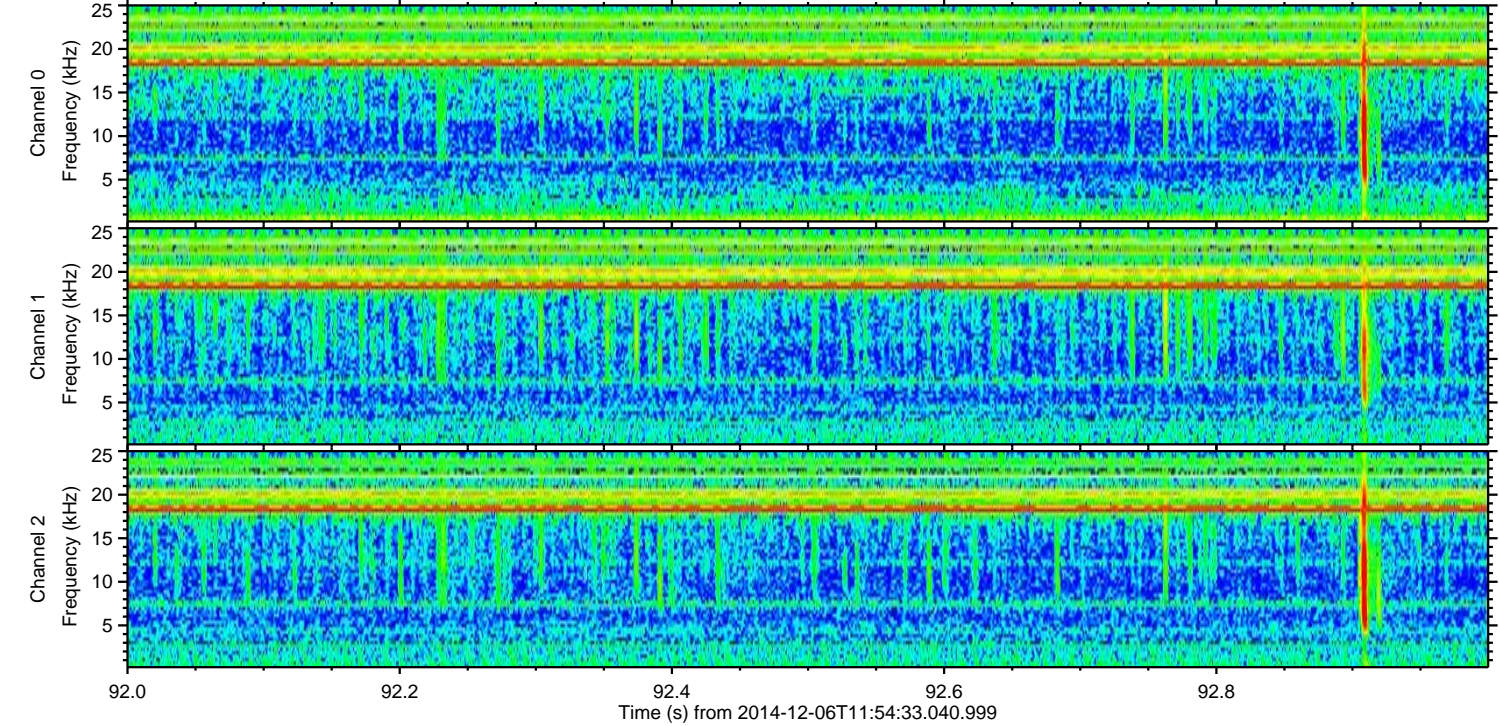
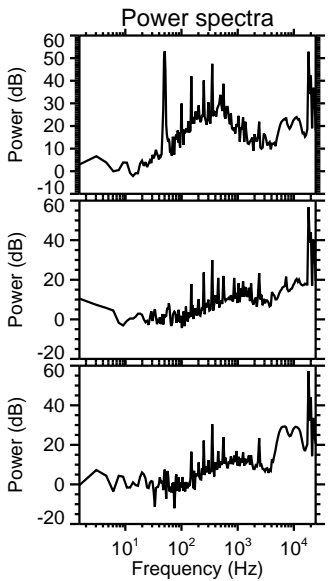
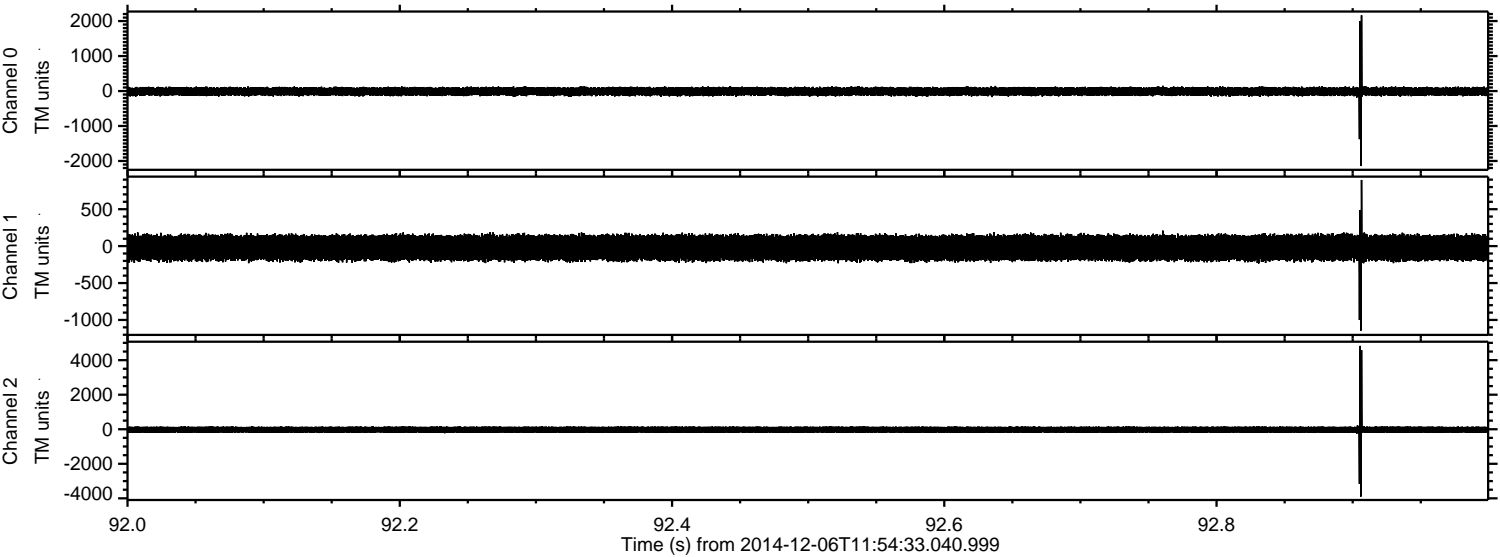
ELMAVAN 3D WAVEFORMS (Measured data sampled at 50 kHz) 49788 packets of 144 samples from 2014-12-06T11:54:33.040.999. Part 124/144

Processed Sat Dec 6 13:03:53 2014 by ELM ver.2012-10-06 from 001\_\_elm20141206\_115432\_\_dat00.bin



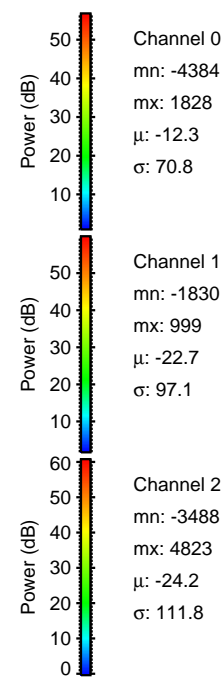
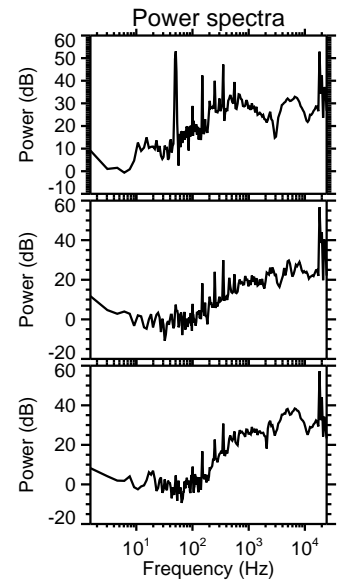
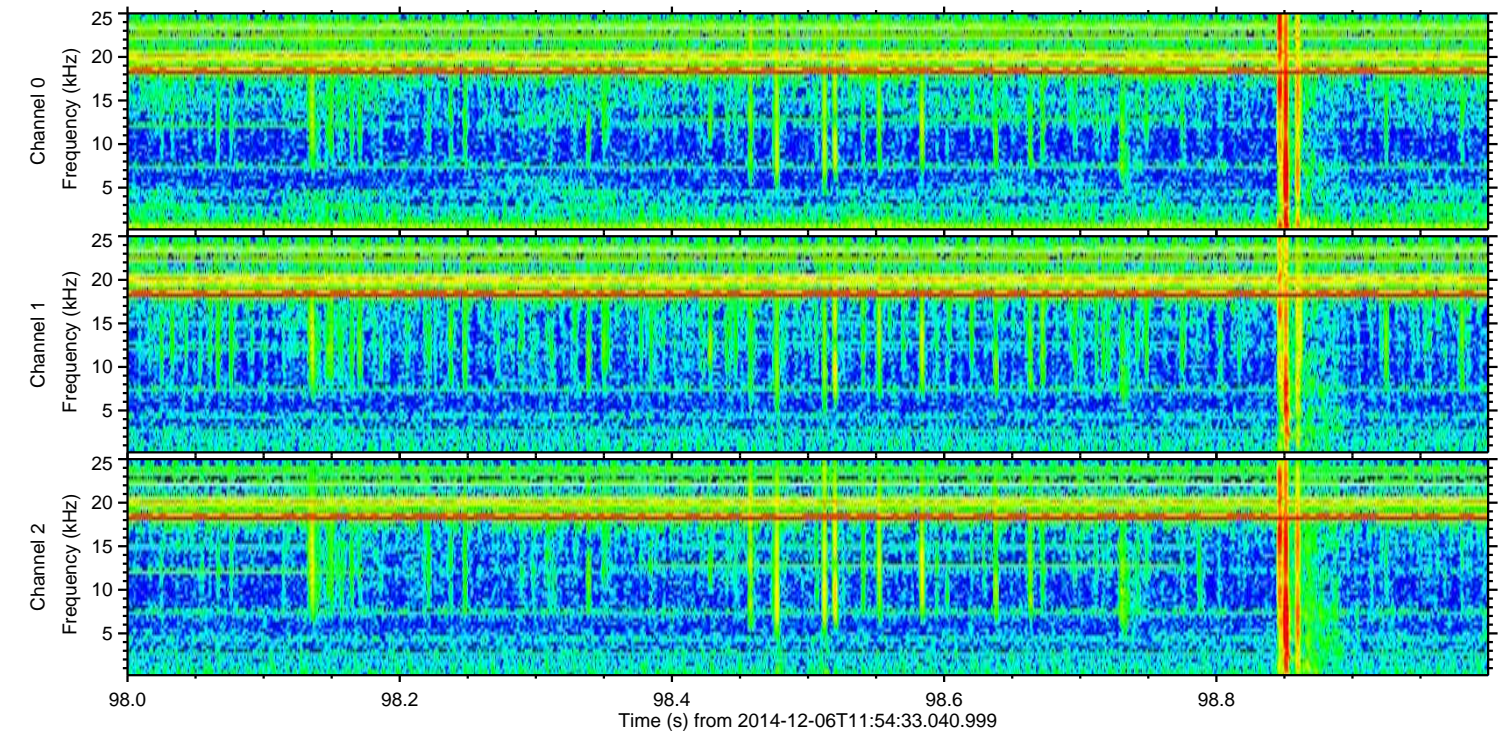
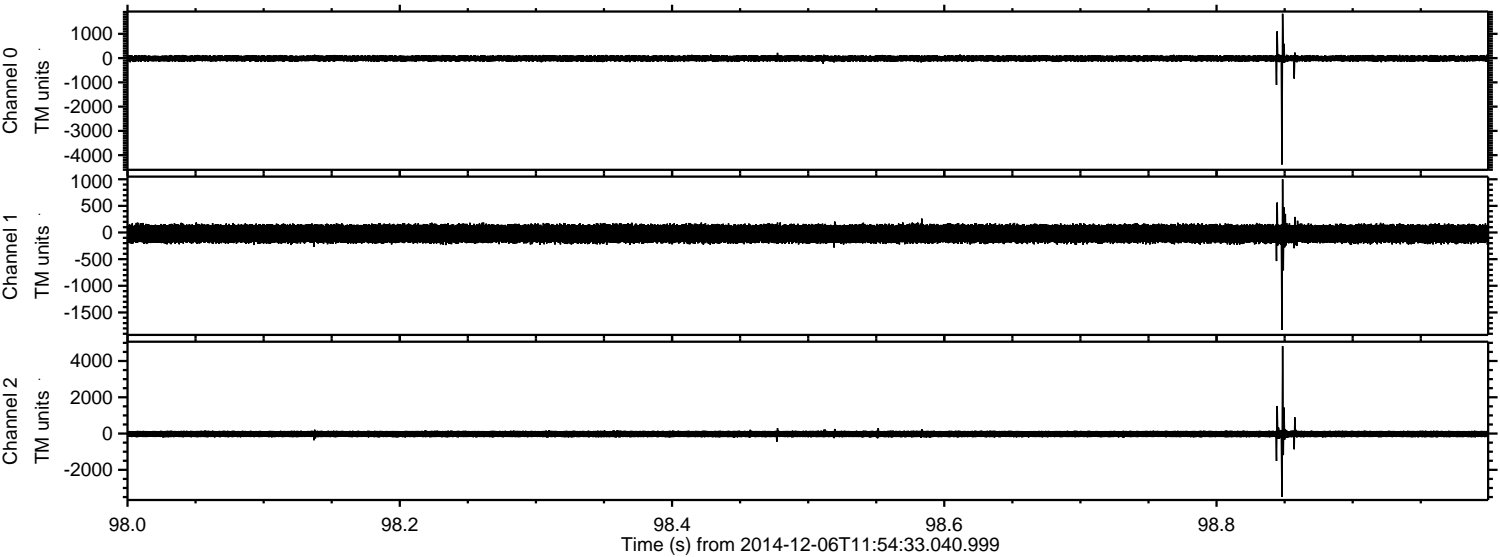


Processed Sat Dec 6 13:03:54 2014 by ELM ver.2012-10-06 from 001\_\_elm20141206\_115432\_\_dat00.bin



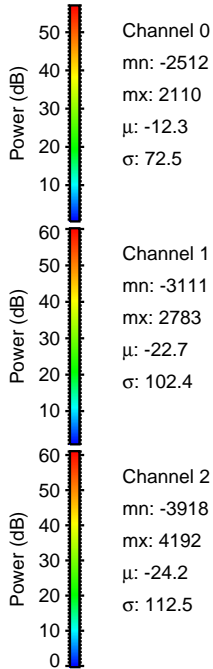
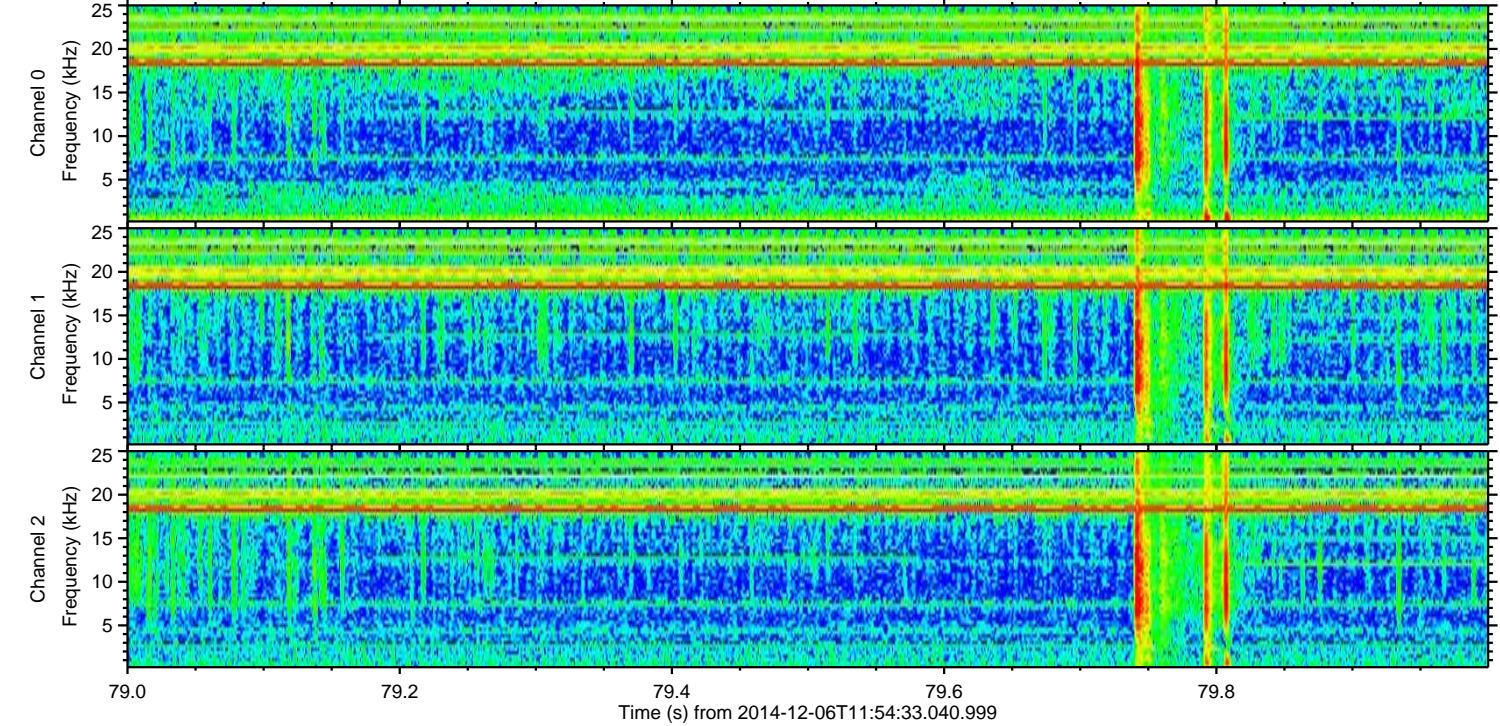
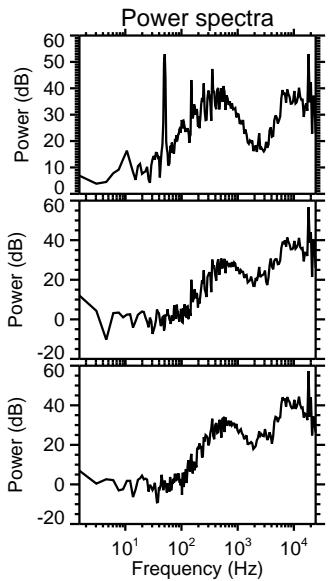
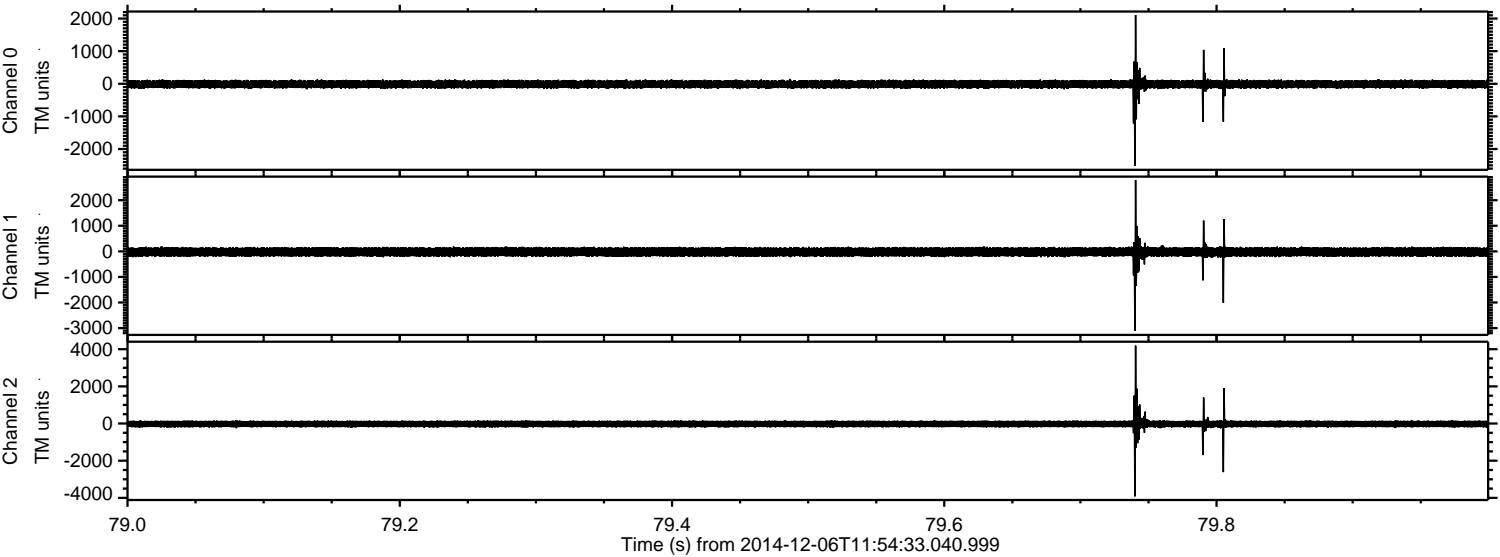


Processed Sat Dec 6 13:03:55 2014 by ELM ver.2012-10-06 from 001\_\_elm20141206\_115432\_\_dat00.bin





Processed Sat Dec 6 13:03:56 2014 by ELM ver.2012-10-06 from 001\_\_elm20141206\_115432\_\_dat00.bin



Channel 0  
mn: -2512  
mx: 2110  
 $\mu$ : -12.3  
 $\sigma$ : 72.5

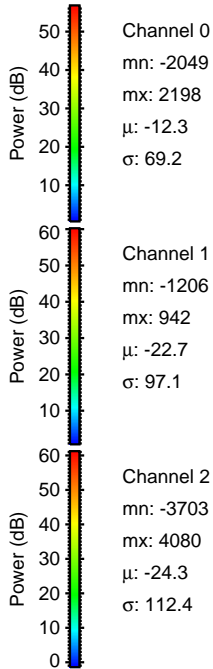
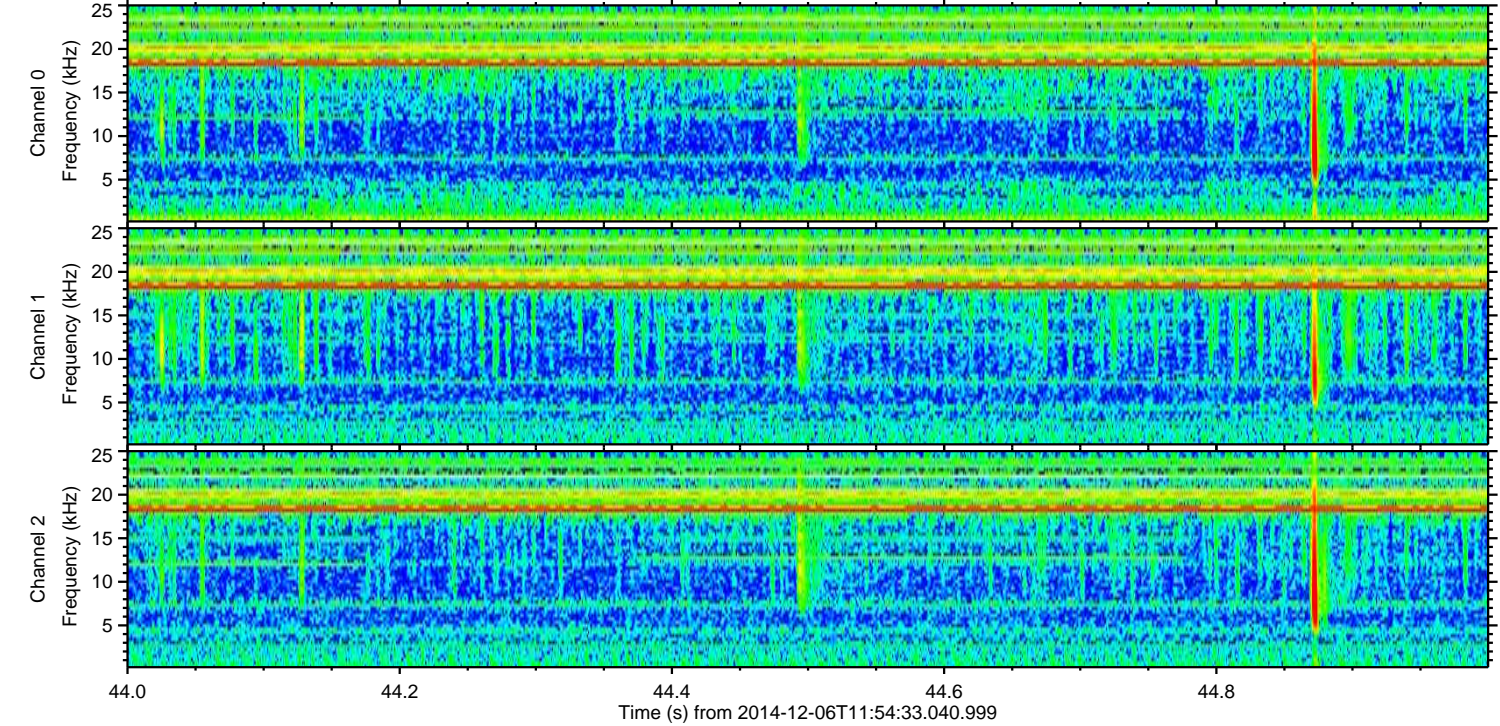
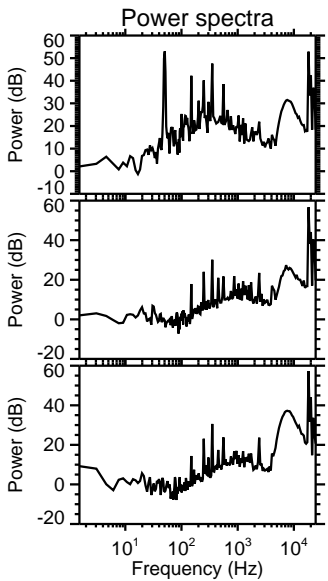
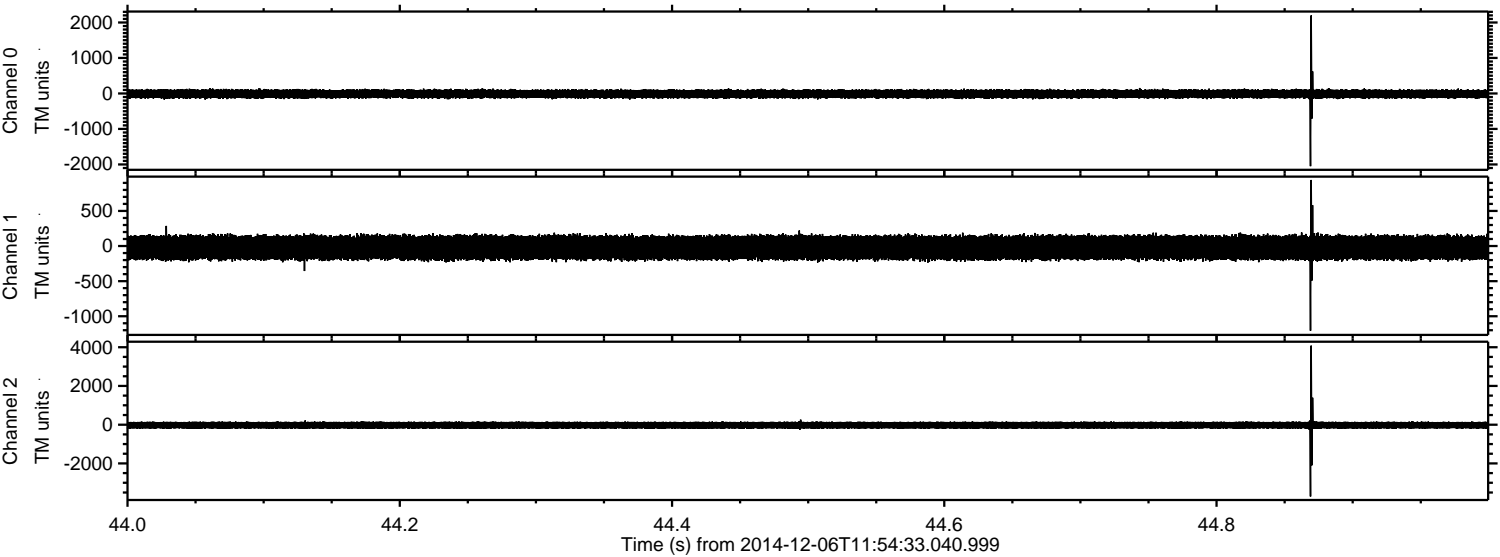
Channel 1  
mn: -3111  
mx: 2783  
 $\mu$ : -22.7  
 $\sigma$ : 102.4

Channel 2  
mn: -3918  
mx: 4192  
 $\mu$ : -24.2  
 $\sigma$ : 112.5



ELMAVAN 3D WAVEFORMS (Measured data sampled at 50 kHz) 49788 packets of 144 samples from 2014-12-06T11:54:33.040.999. Part 45/144

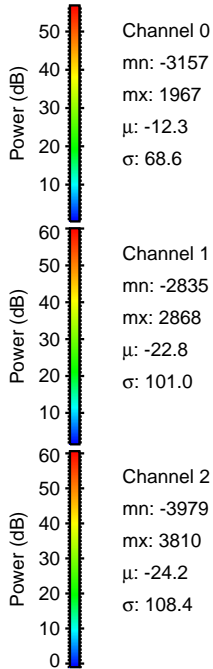
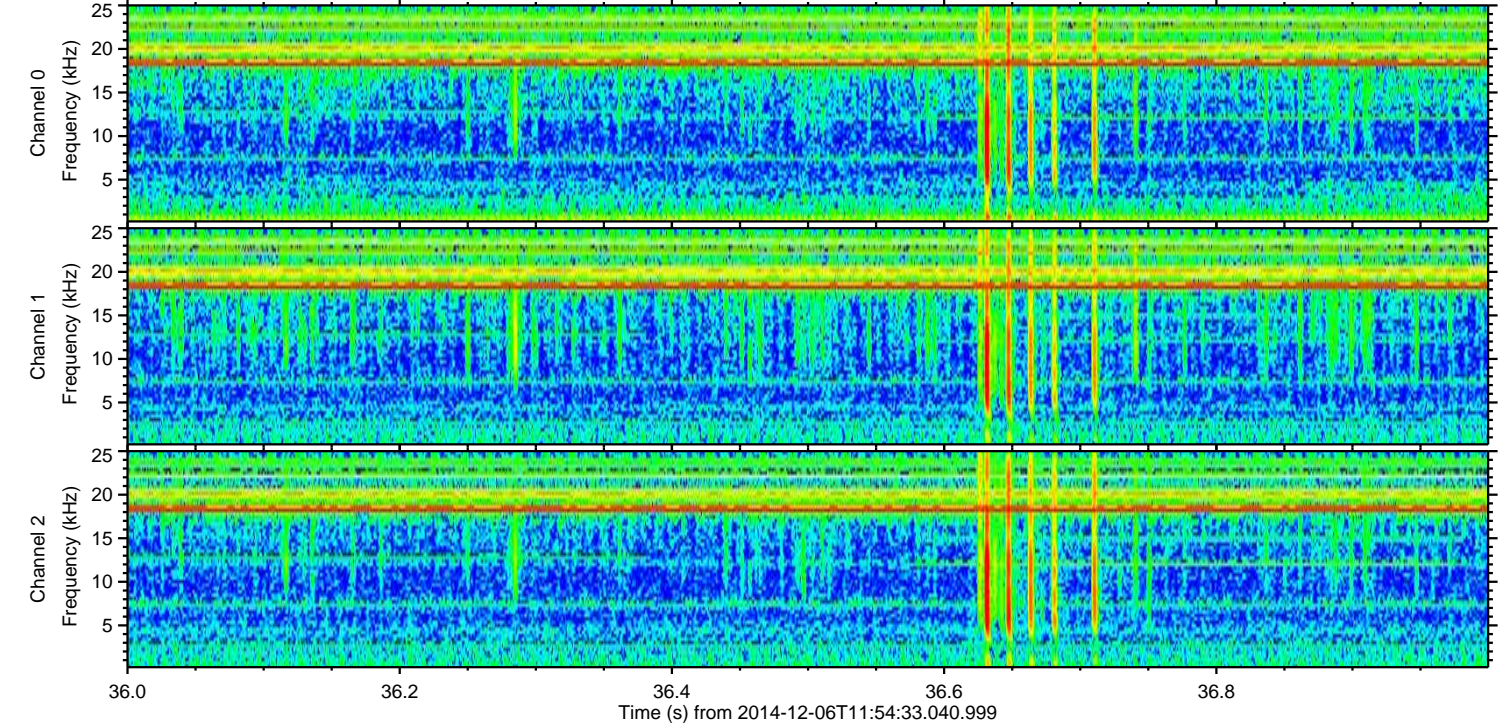
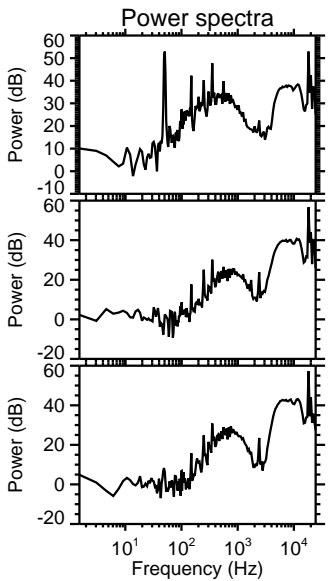
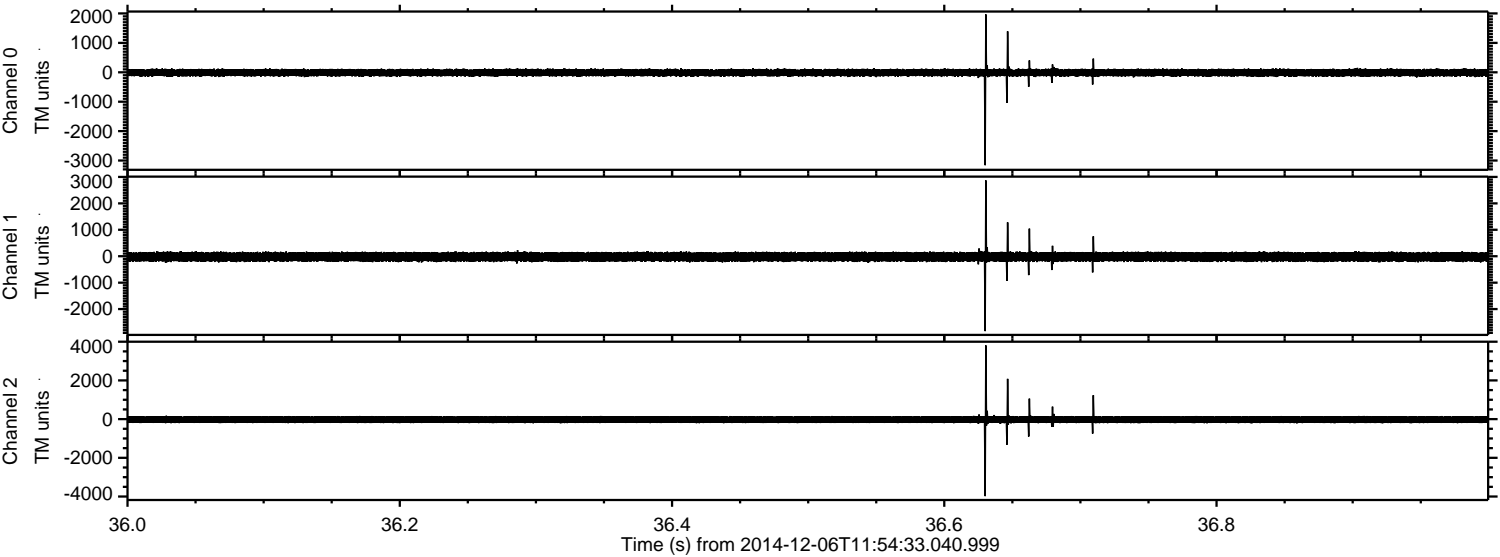
Processed Sat Dec 6 13:03:57 2014 by ELM ver.2012-10-06 from 001\_\_elm20141206\_115432\_\_dat00.bin





ELMAVAN 3D WAVEFORMS (Measured data sampled at 50 kHz) 49788 packets of 144 samples from 2014-12-06T11:54:33.040.999. Part 37/144

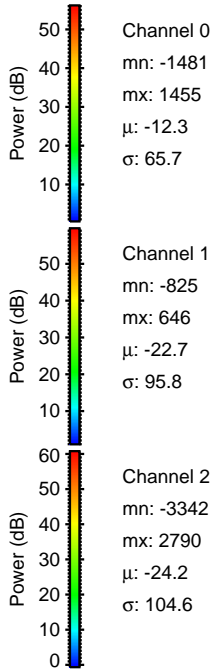
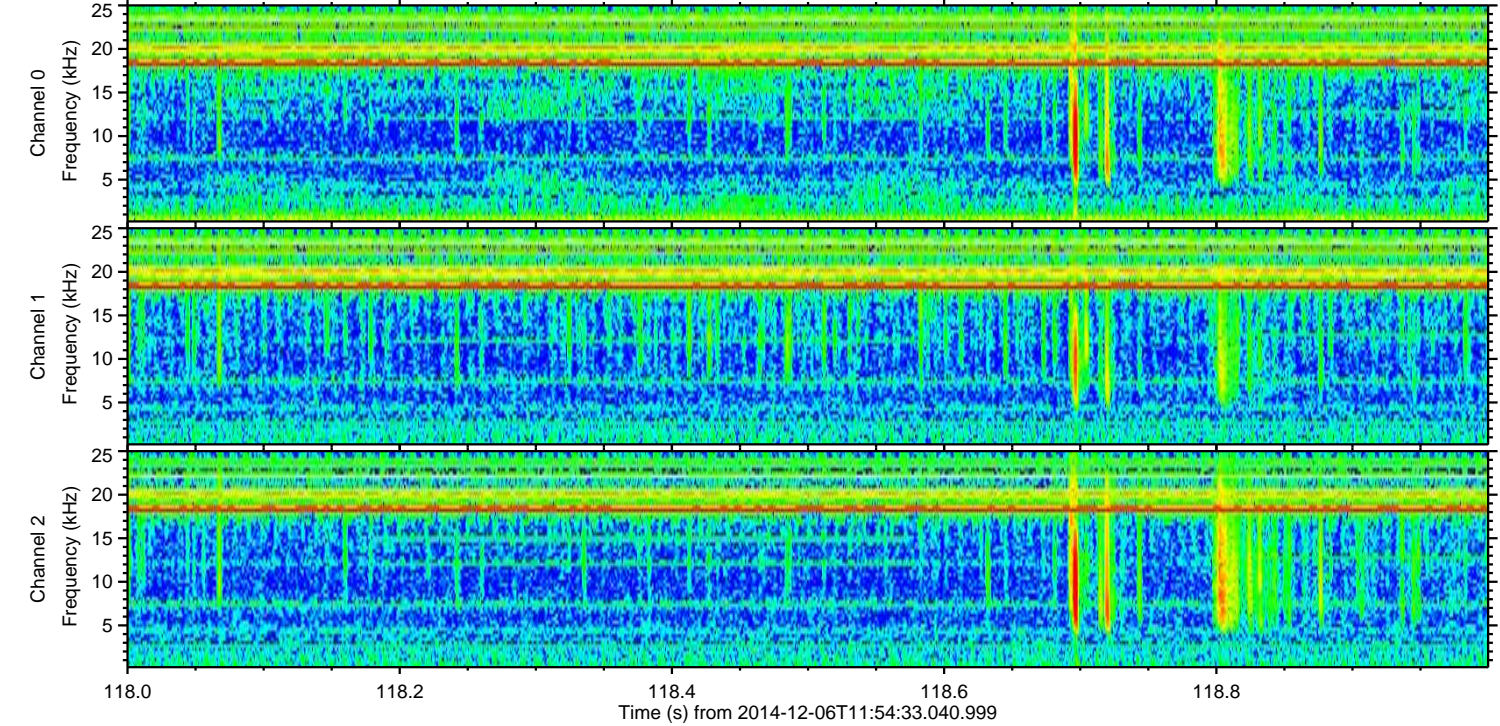
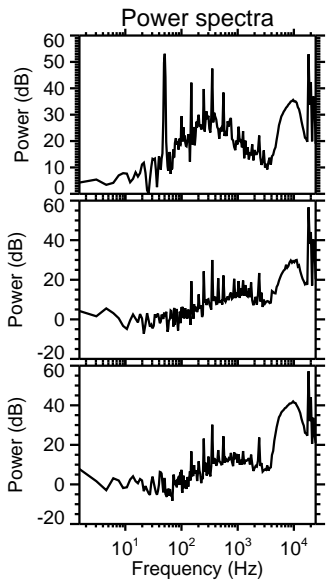
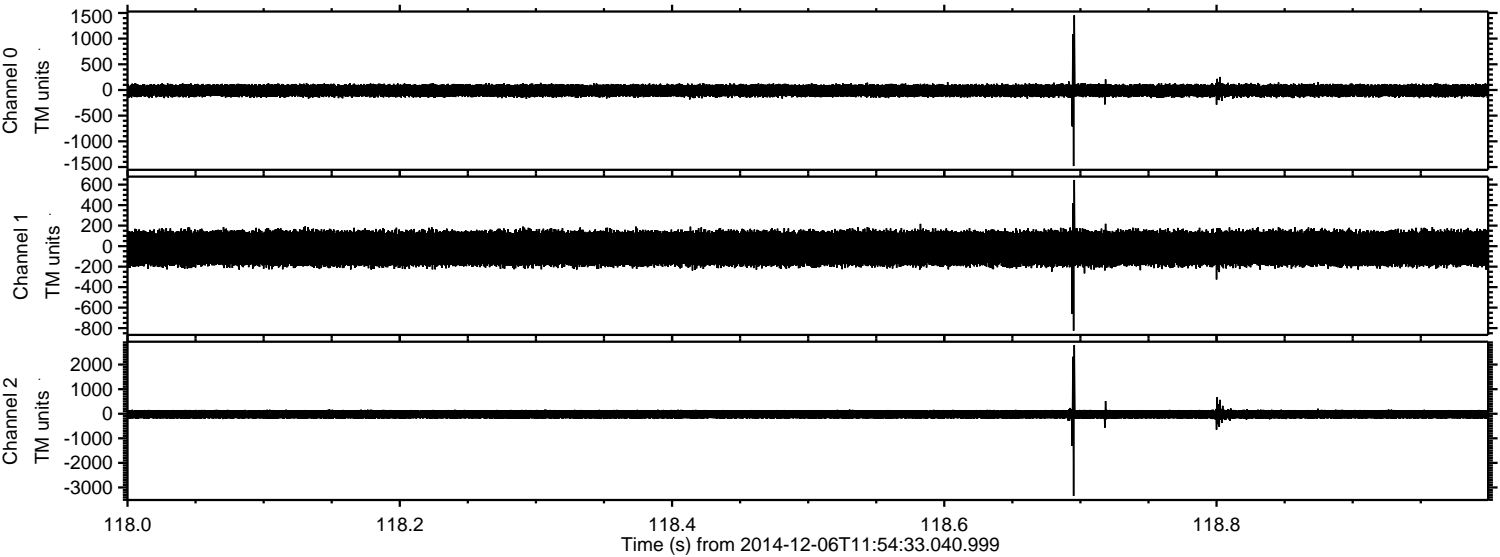
Processed Sat Dec 6 13:03:58 2014 by ELM ver.2012-10-06 from 001\_\_elm20141206\_115432\_\_dat00.bin





ELMAVAN 3D WAVEFORMS (Measured data sampled at 50 kHz) 49788 packets of 144 samples from 2014-12-06T11:54:33.040.999. Part 119/144

Processed Sat Dec 6 13:03:59 2014 by ELM ver.2012-10-06 from 001\_\_elm20141206\_115432\_\_dat00.bin



Channel 0  
mn: -1481  
mx: 1455  
 $\mu$ : -12.3  
 $\sigma$ : 65.7

Channel 1  
mn: -825  
mx: 646  
 $\mu$ : -22.7  
 $\sigma$ : 95.8

Channel 2  
mn: -3342  
mx: 2790  
 $\mu$ : -24.2  
 $\sigma$ : 104.6



ELMAVAN 3D WAVEFORMS (Measured data sampled at 50 kHz) 49788 packets of 144 samples from 2014-12-06T11:54:33.040.999. Part 114/144

Processed Sat Dec 6 13:04:00 2014 by ELM ver.2012-10-06 from 001\_\_elm20141206\_115432\_\_dat00.bin

