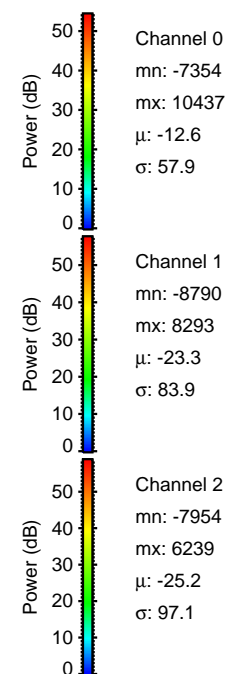
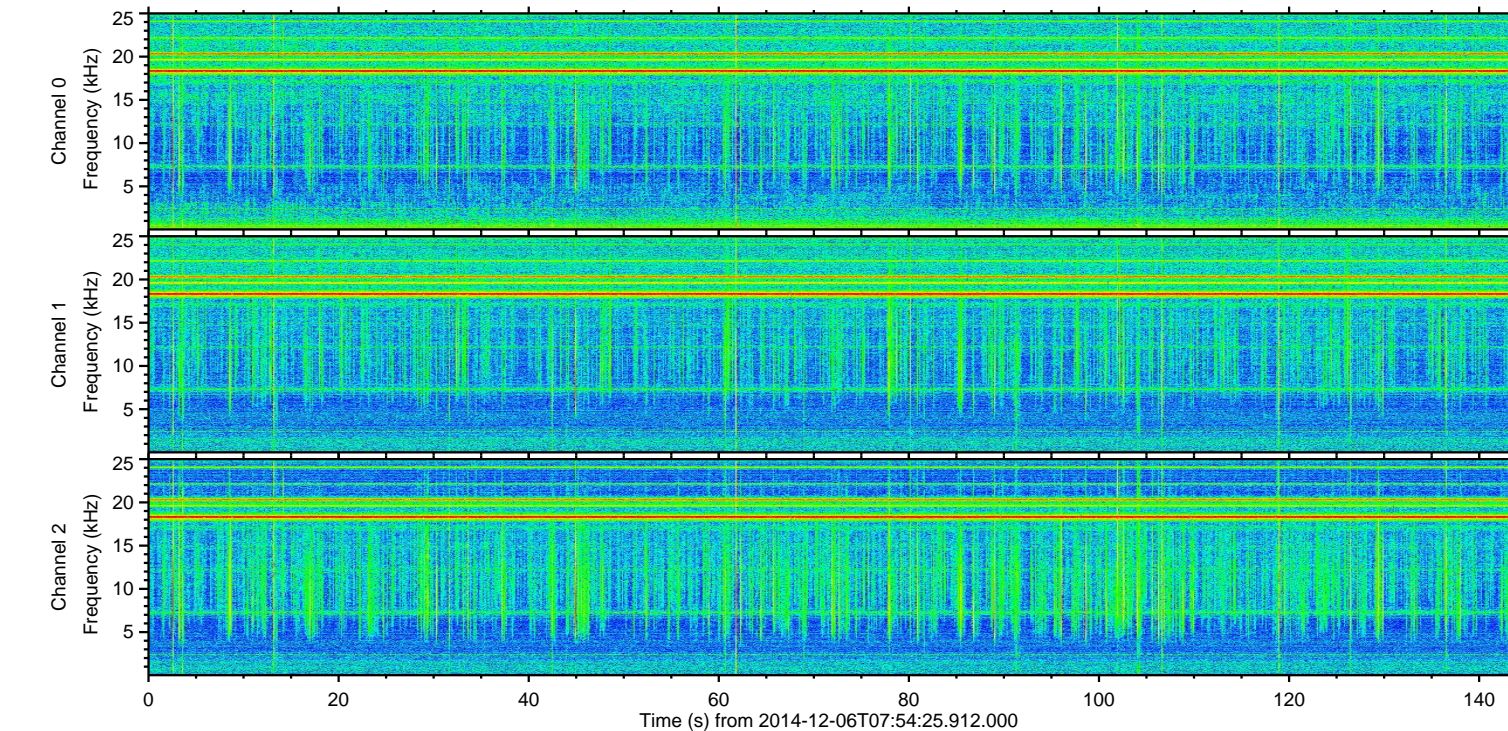
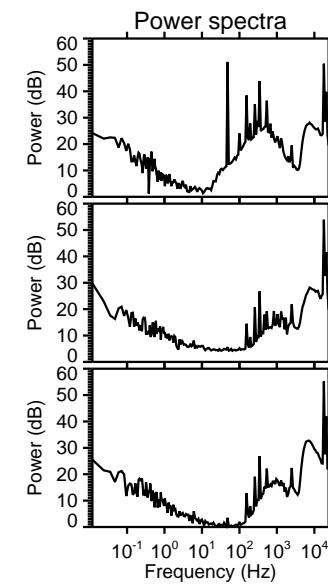
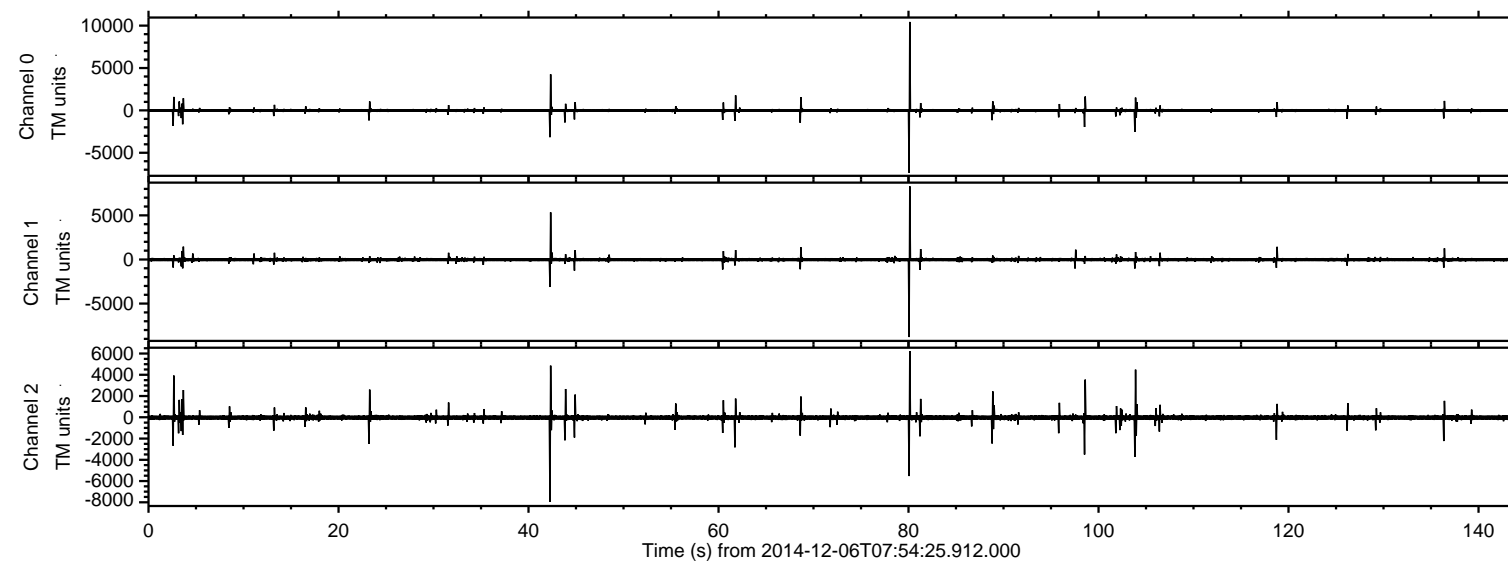


# ELMAVAN 3D WAVEFORMS (Measured data sampled at 50 kHz) 49731 packets of 144 samples from 2014-12-06T07:54:25.912.000.

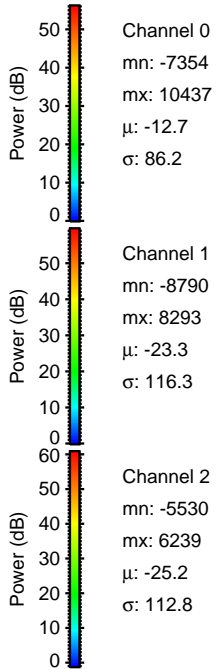
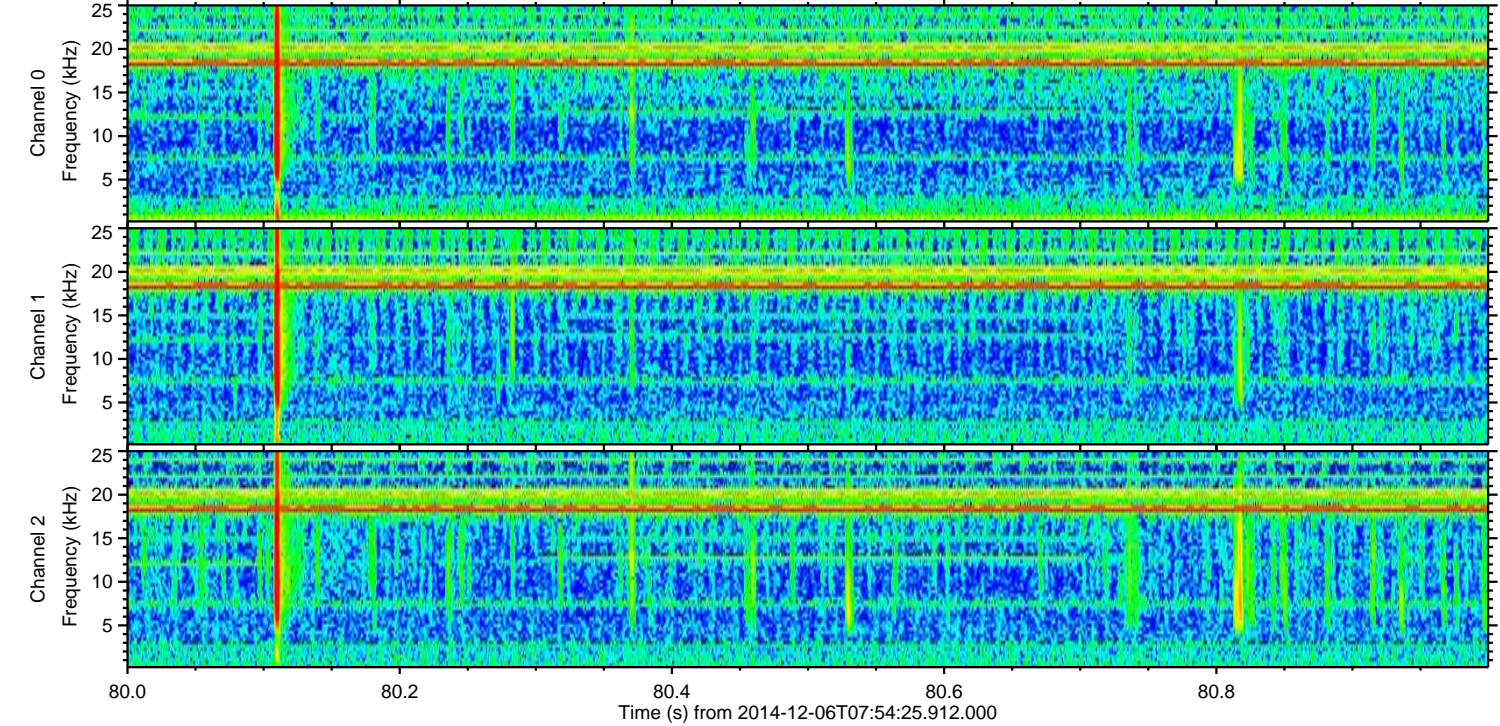
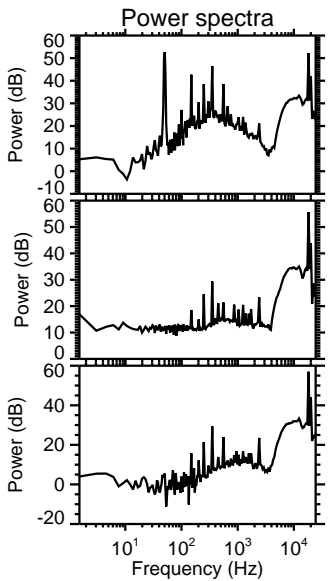
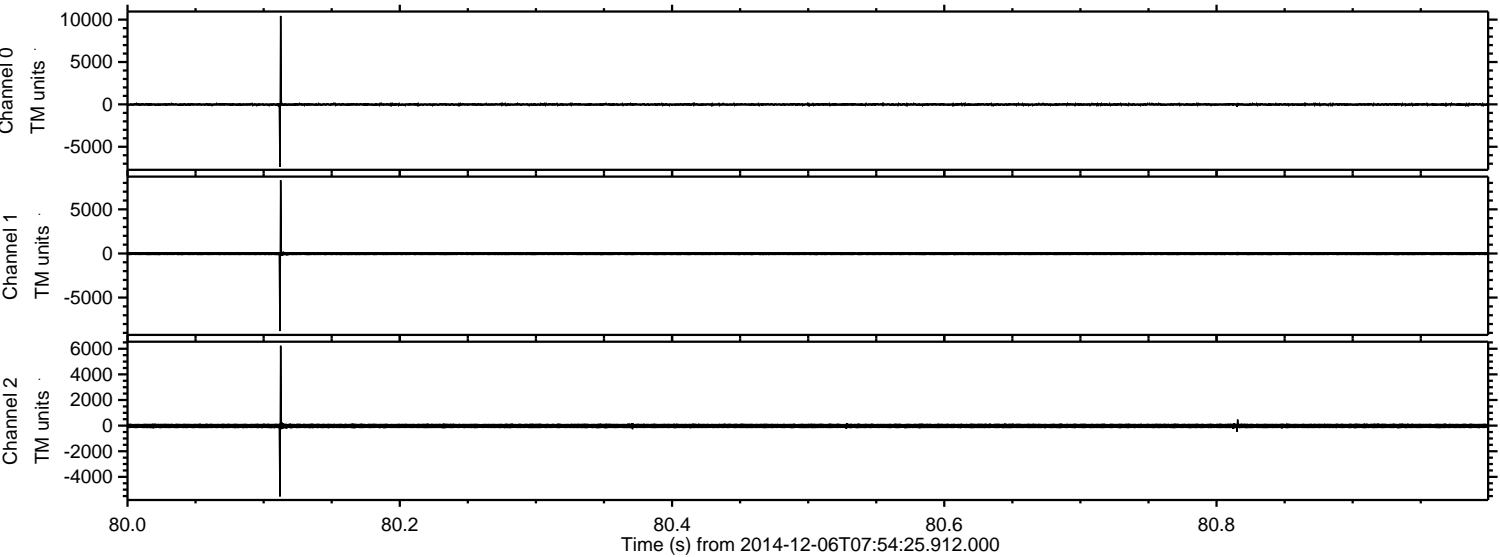
Processed Sat Dec 6 09:03:24 2014 by ELM ver.2012-10-06 from 001\_\_elm20141206\_075424\_\_dat00.bin





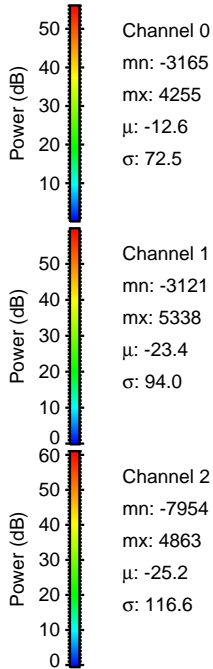
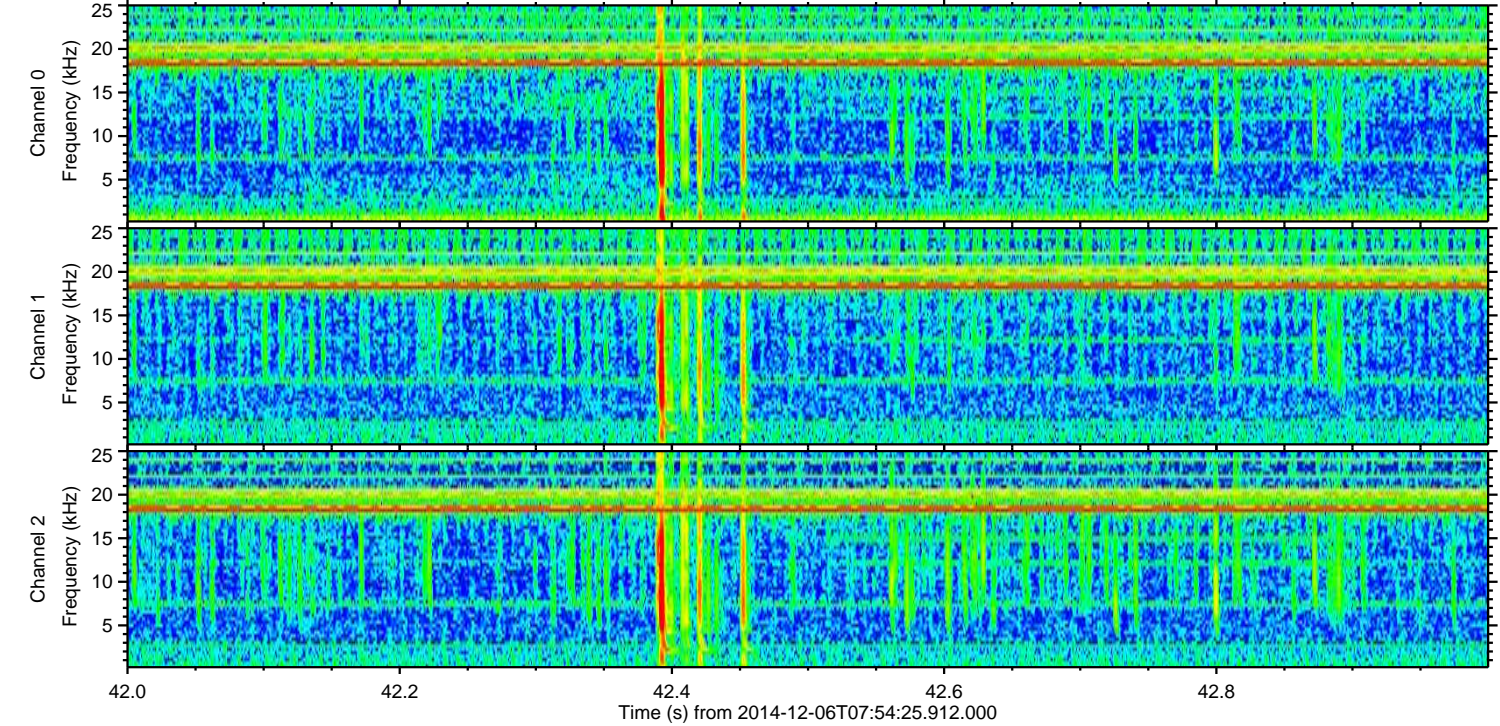
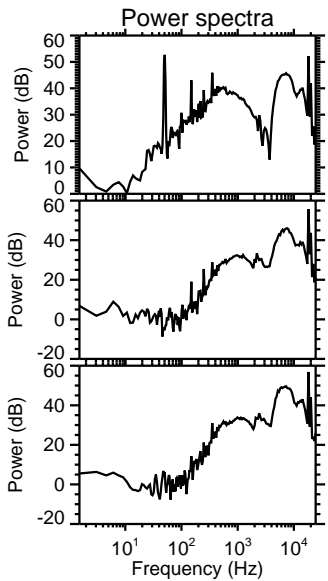
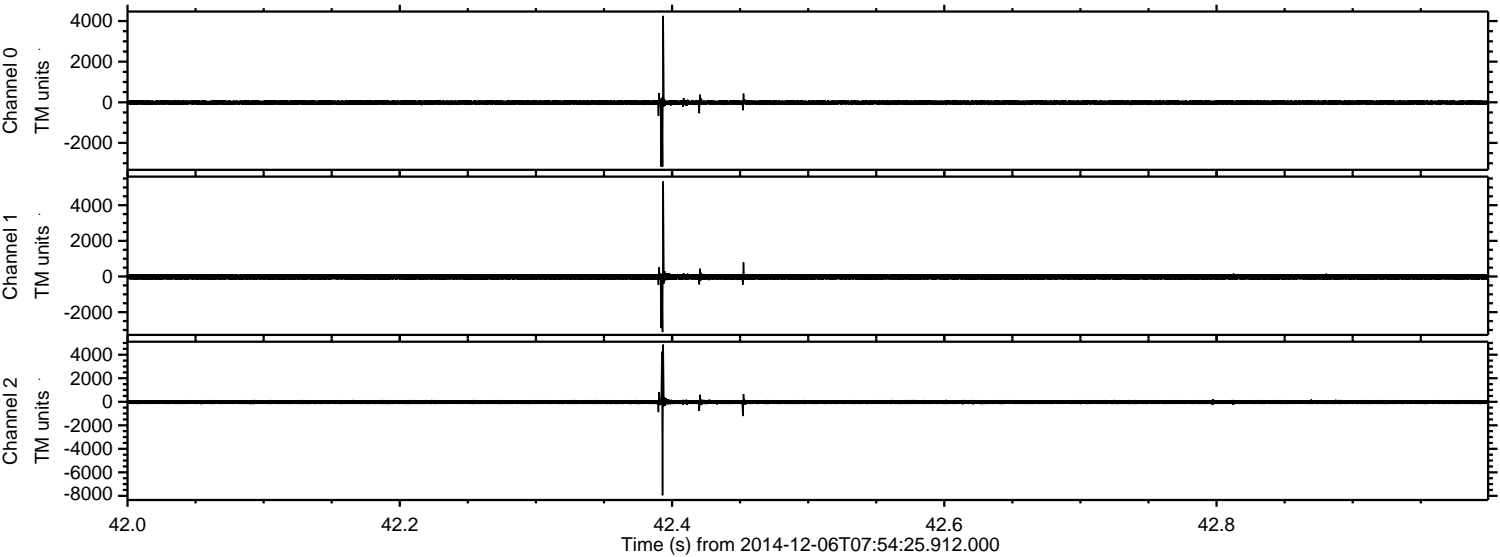
ELMAVAN 3D WAVEFORMS (Measured data sampled at 50 kHz) 49731 packets of 144 samples from 2014-12-06T07:54:25.912.000. Part 81/144

Processed Sat Dec 6 09:03:35 2014 by ELM ver.2012-10-06 from 001\_\_elm20141206\_075424\_\_dat00.bin





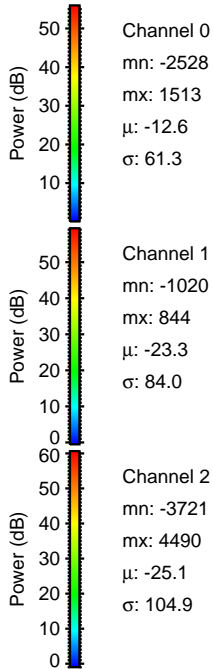
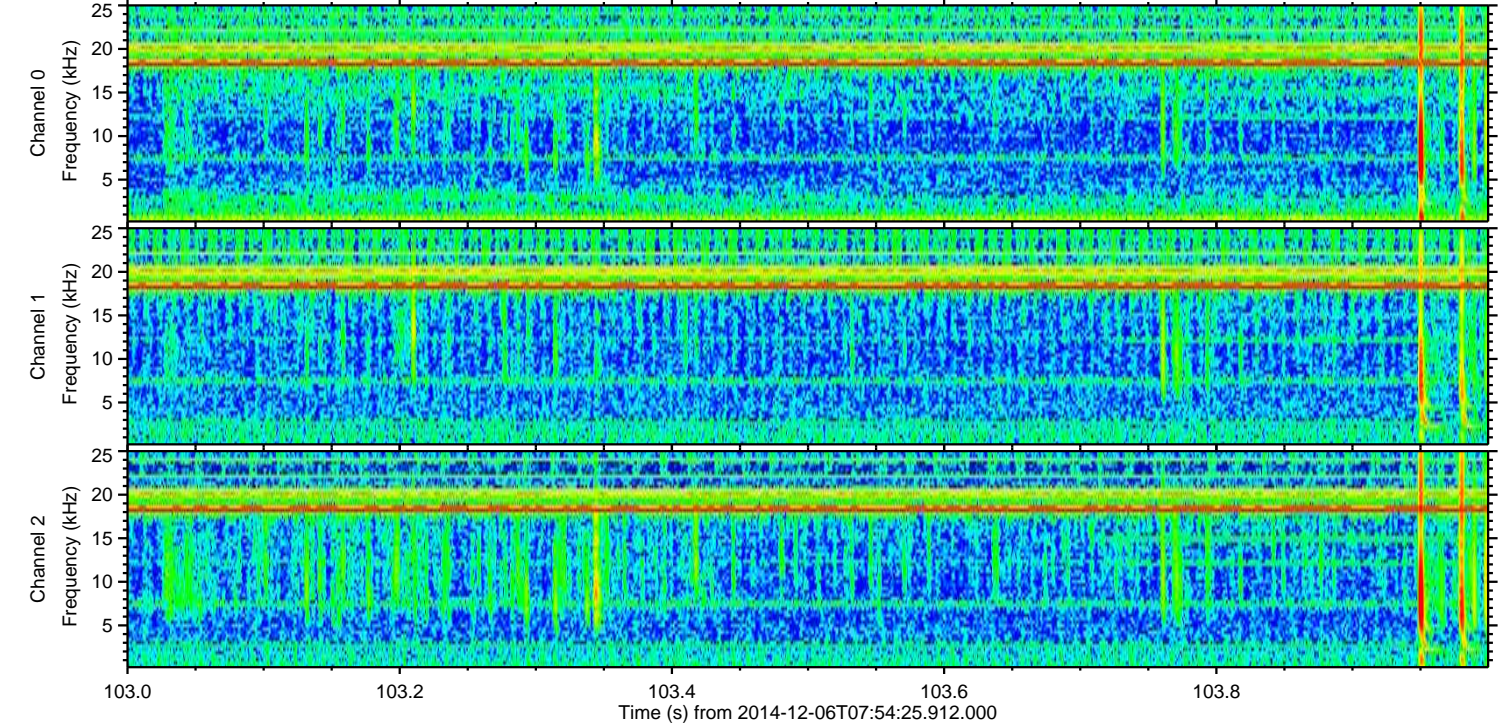
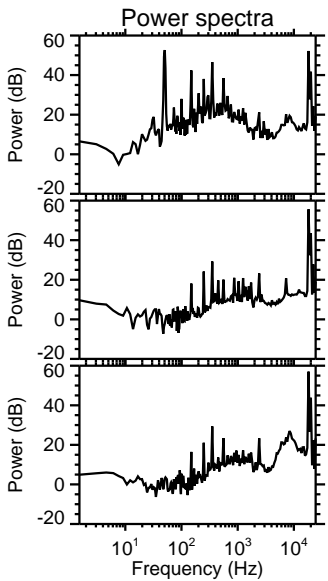
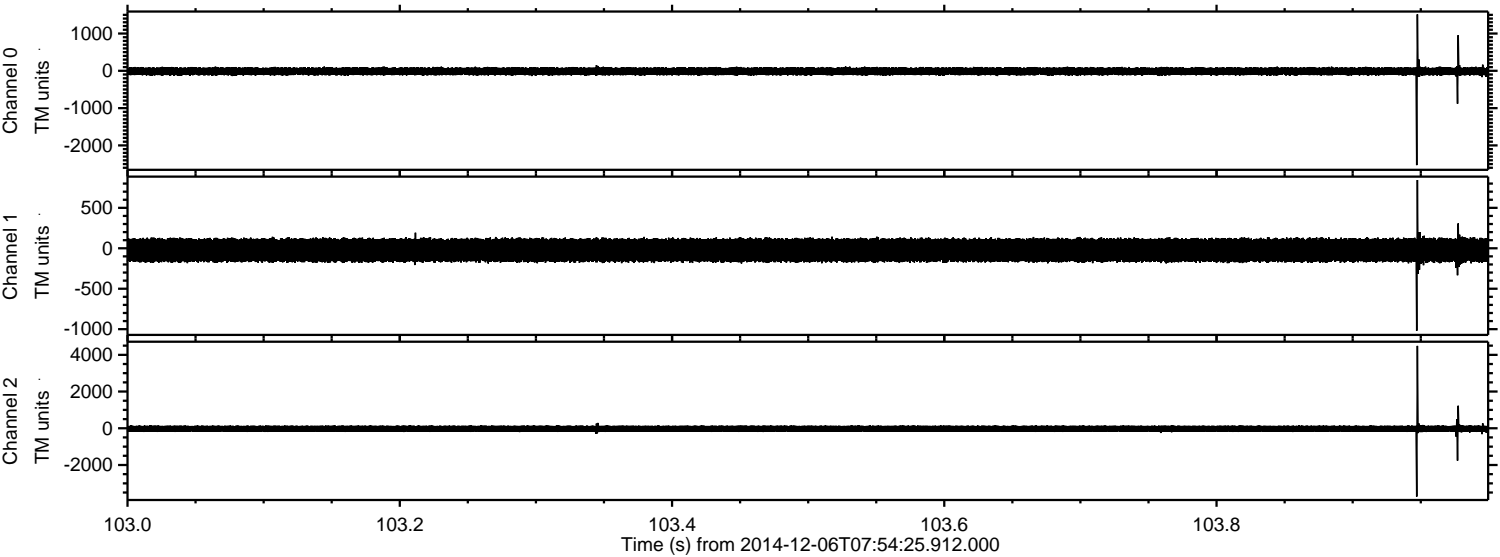
Processed Sat Dec 6 09:03:36 2014 by ELM ver.2012-10-06 from 001\_\_elm20141206\_075424\_\_dat00.bin





ELMAVAN 3D WAVEFORMS (Measured data sampled at 50 kHz) 49731 packets of 144 samples from 2014-12-06T07:54:25.912.000. Part 104/144

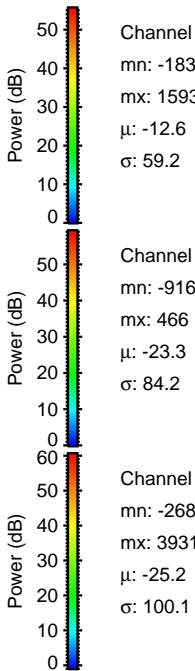
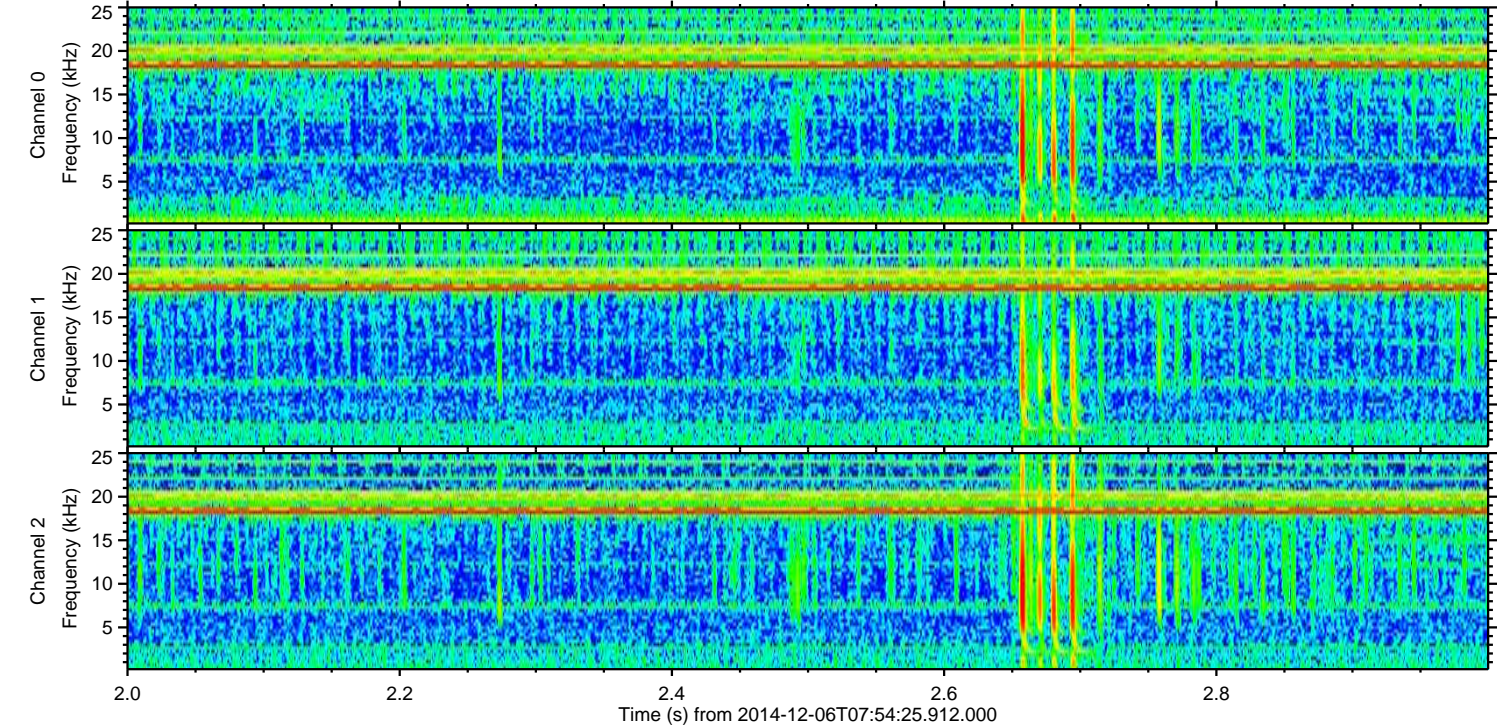
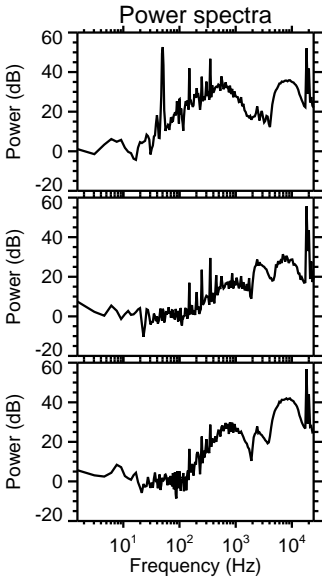
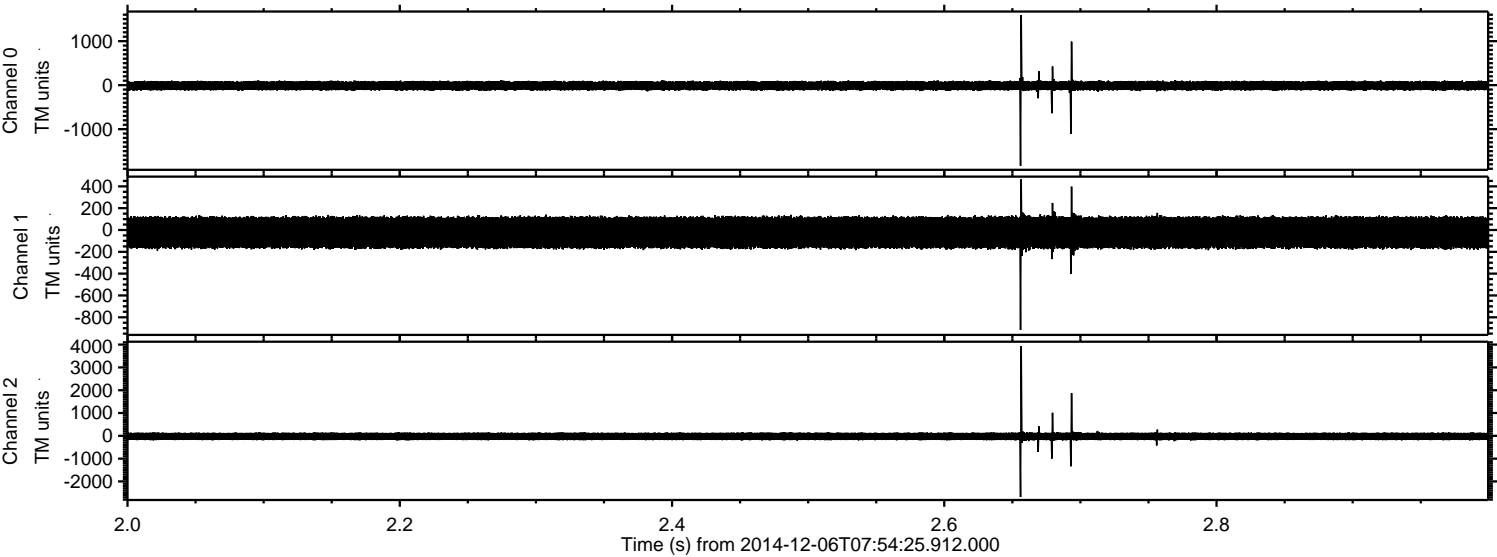
Processed Sat Dec 6 09:03:37 2014 by ELM ver.2012-10-06 from 001\_\_elm20141206\_075424\_\_dat00.bin





ELMAVAN 3D WAVEFORMS (Measured data sampled at 50 kHz) 49731 packets of 144 samples from 2014-12-06T07:54:25.912.000. Part 3/144

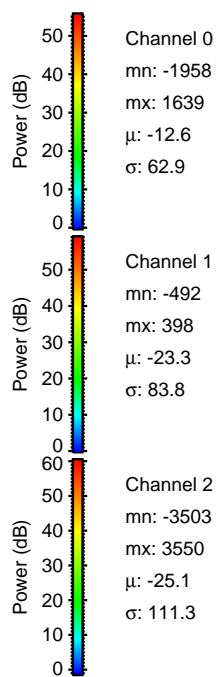
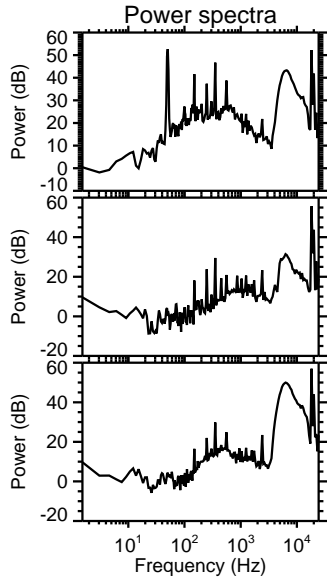
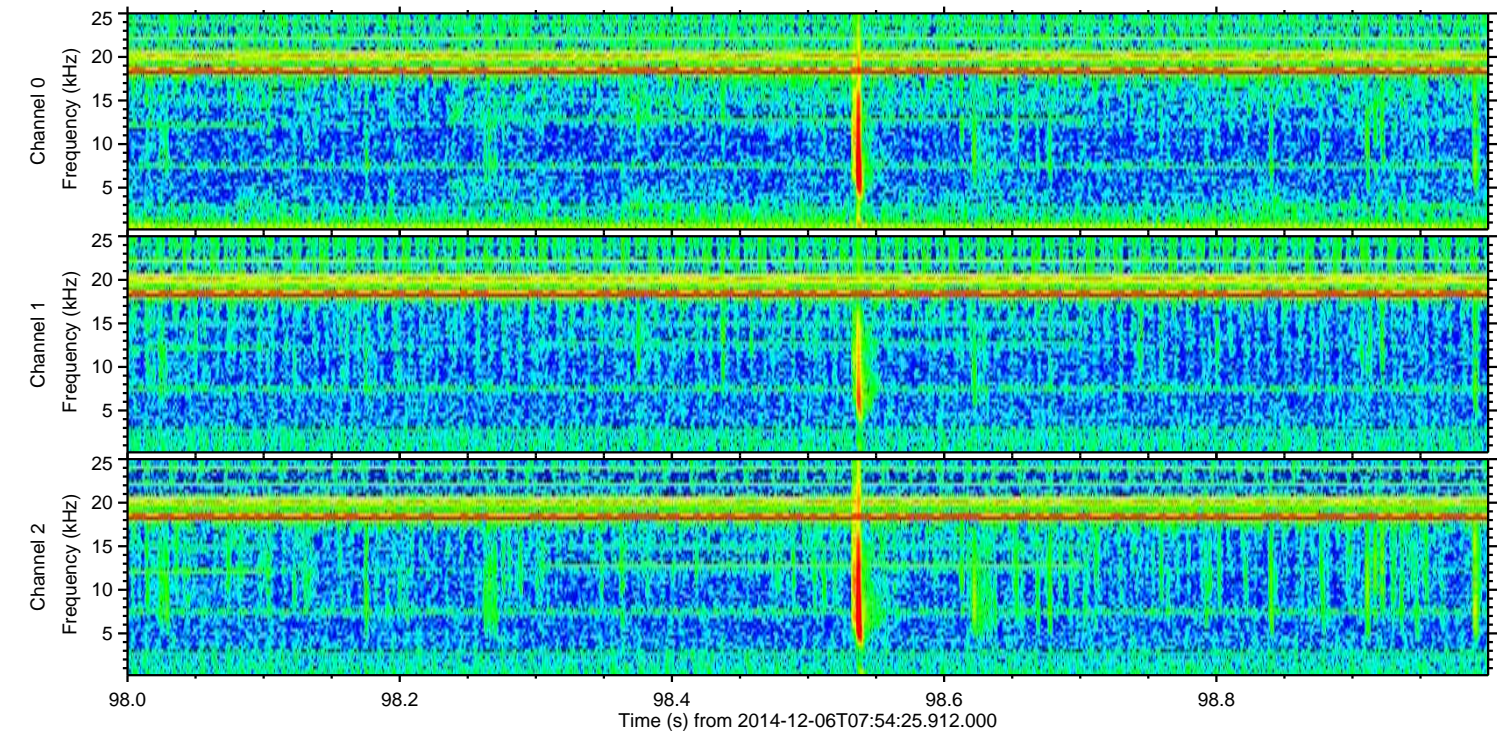
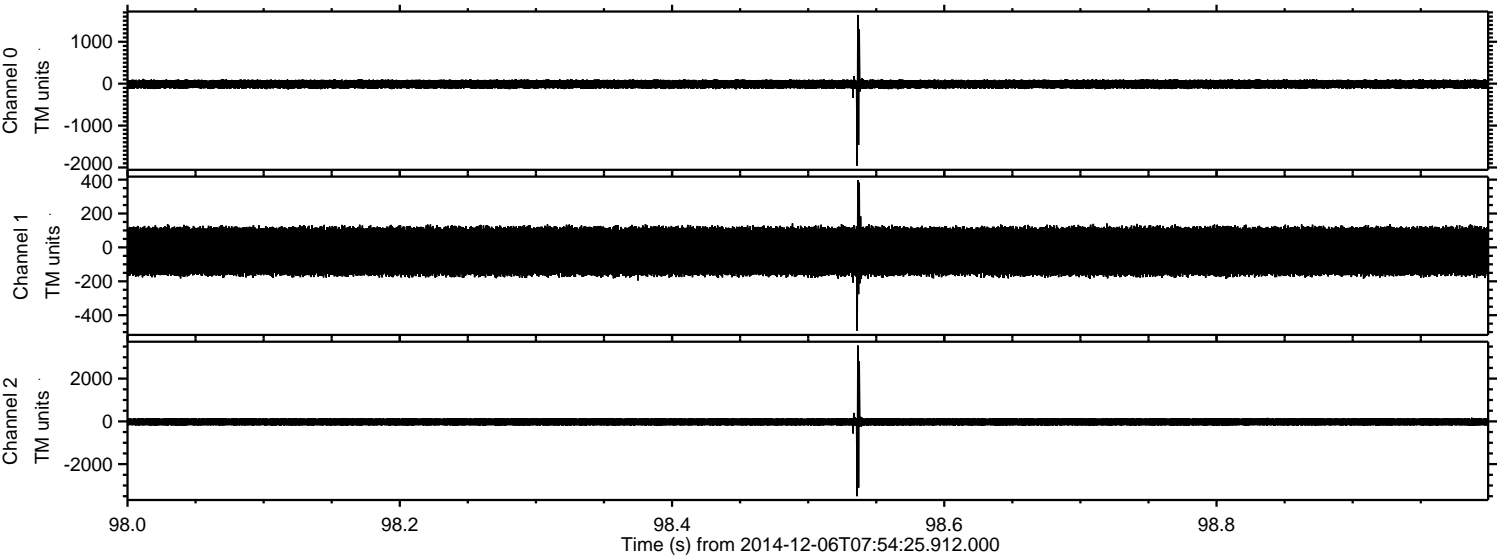
Processed Sat Dec 6 09:03:38 2014 by ELM ver.2012-10-06 from 001\_\_elm20141206\_075424\_\_dat00.bin





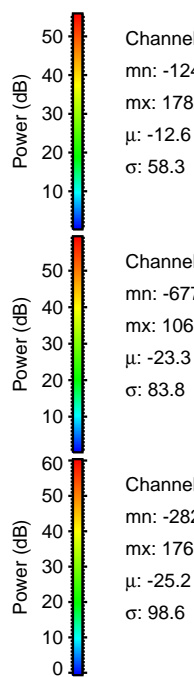
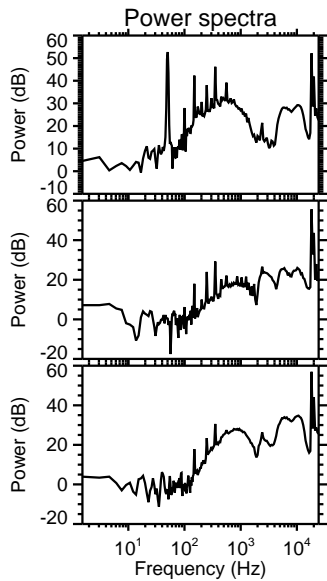
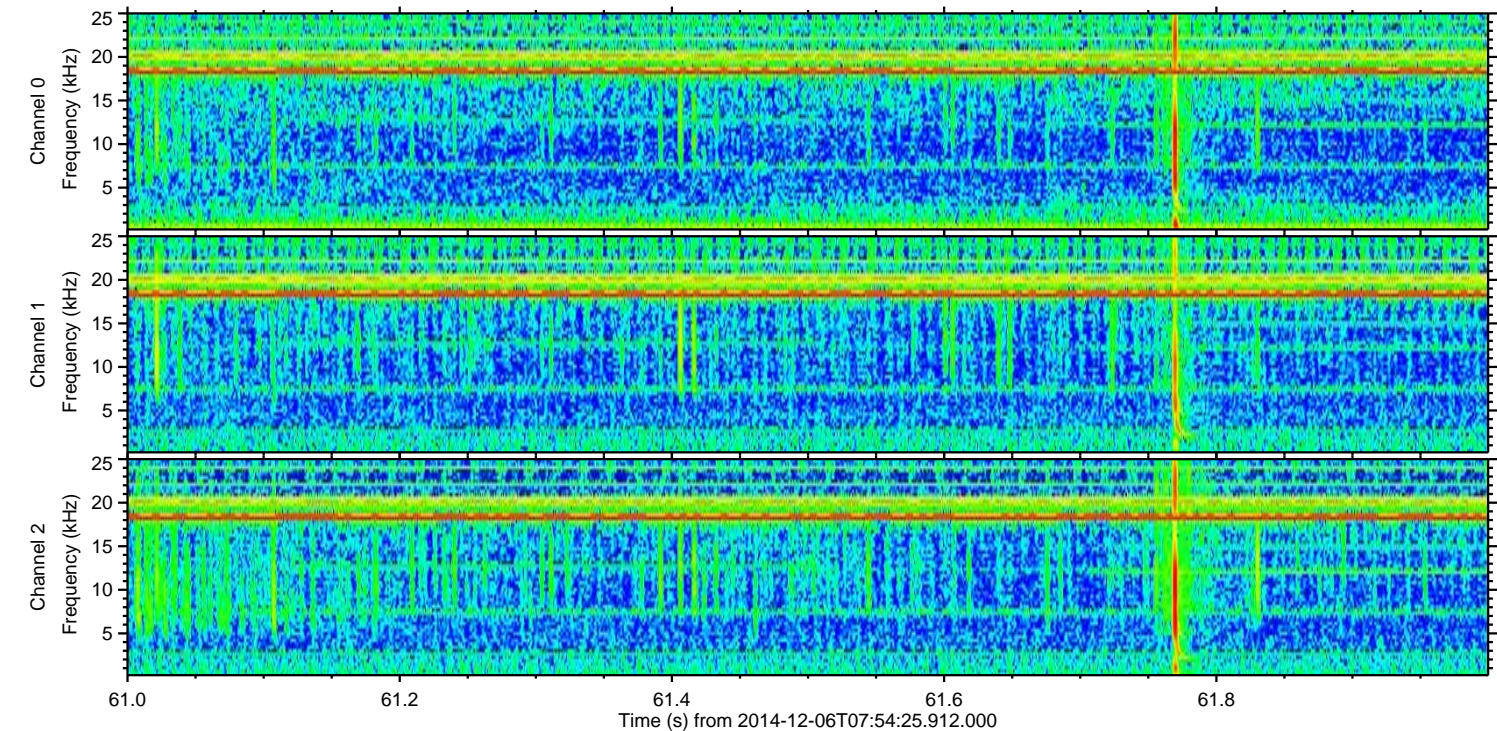
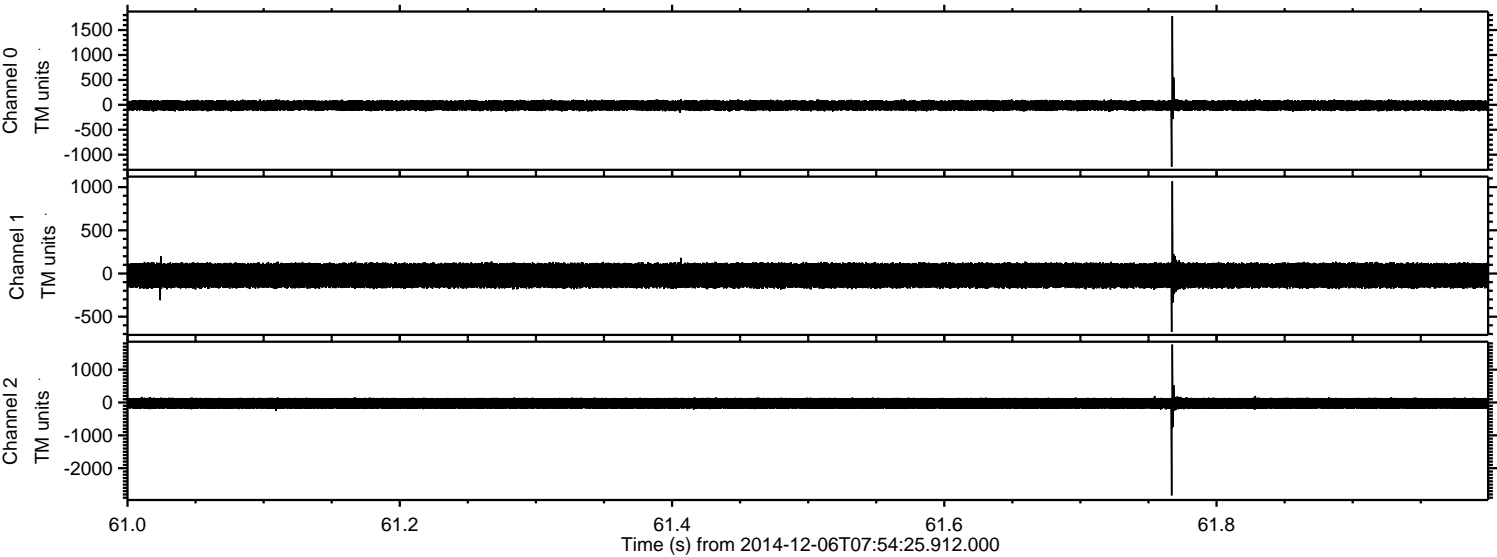
ELMAVAN 3D WAVEFORMS (Measured data sampled at 50 kHz) 49731 packets of 144 samples from 2014-12-06T07:54:25.912.000. Part 99/144

Processed Sat Dec 6 09:03:39 2014 by ELM ver.2012-10-06 from 001\_\_elm20141206\_075424\_\_dat00.bin





Processed Sat Dec 6 09:03:40 2014 by ELM ver.2012-10-06 from 001\_\_elm20141206\_075424\_\_dat00.bin



Channel 0  
mn: -1241  
mx: 1782  
 $\mu$ : -12.6  
 $\sigma$ : 58.3

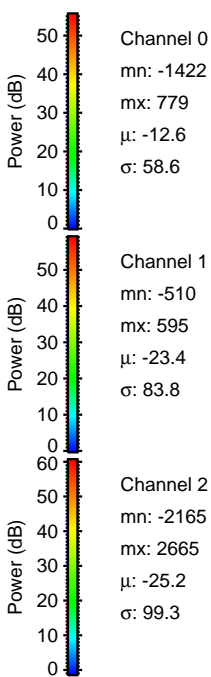
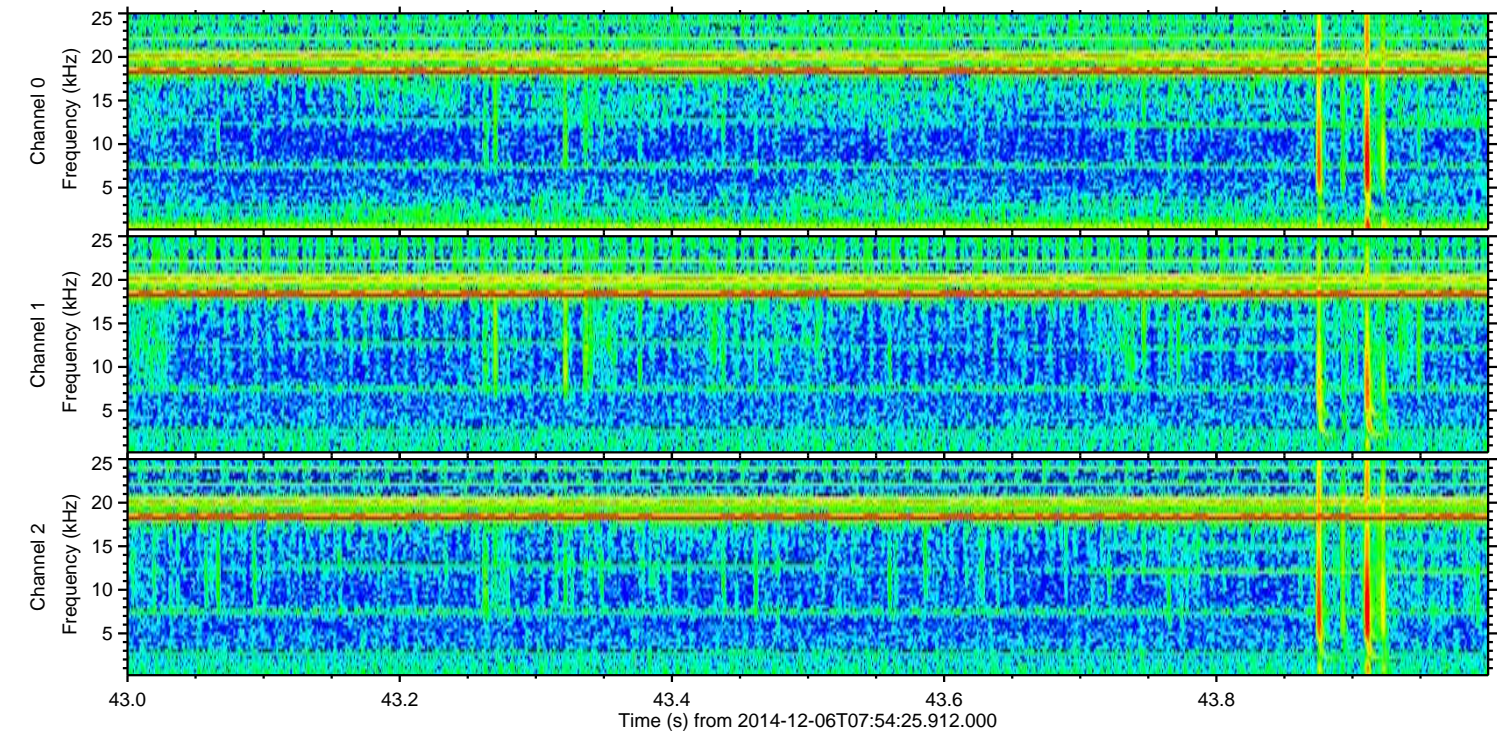
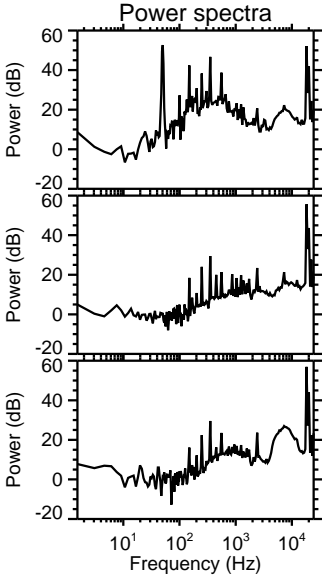
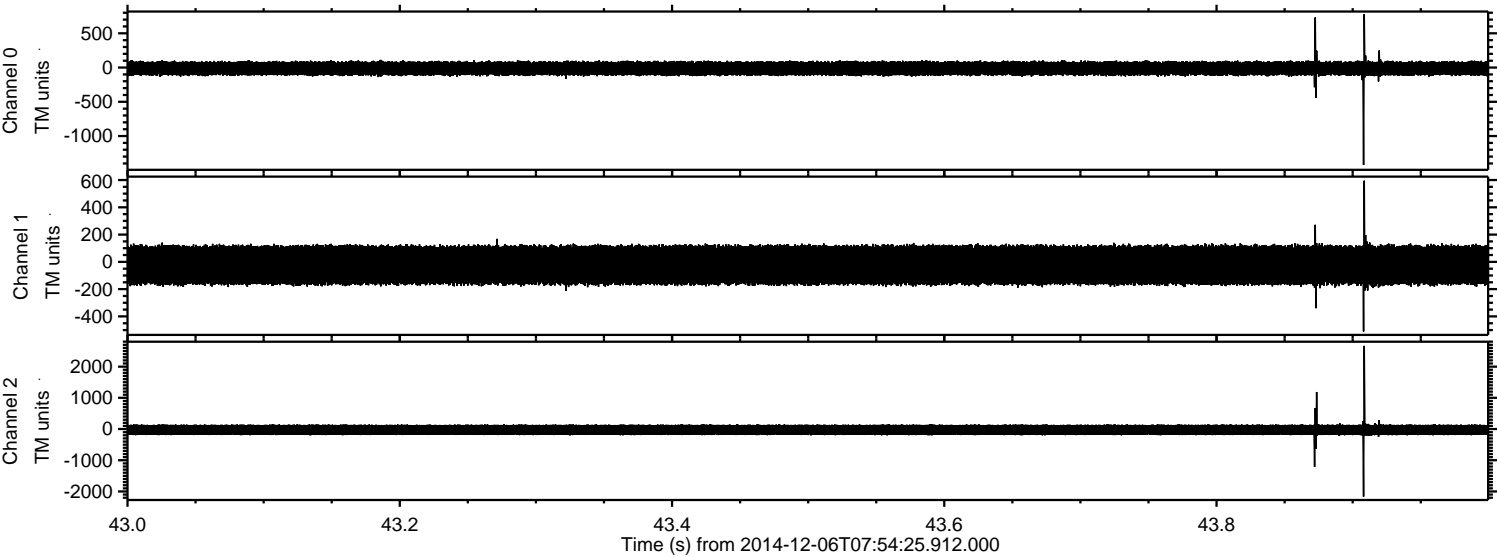
Channel 1  
mn: -677  
mx: 1068  
 $\mu$ : -23.3  
 $\sigma$ : 83.8

Channel 2  
mn: -2827  
mx: 1763  
 $\mu$ : -25.2  
 $\sigma$ : 98.6



ELMAVAN 3D WAVEFORMS (Measured data sampled at 50 kHz) 49731 packets of 144 samples from 2014-12-06T07:54:25.912.000. Part 44/144

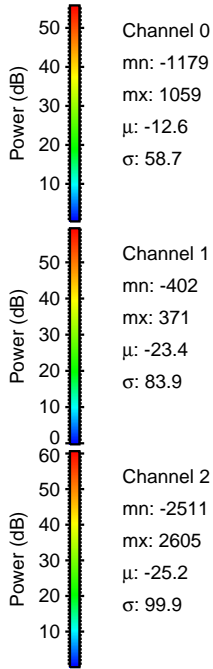
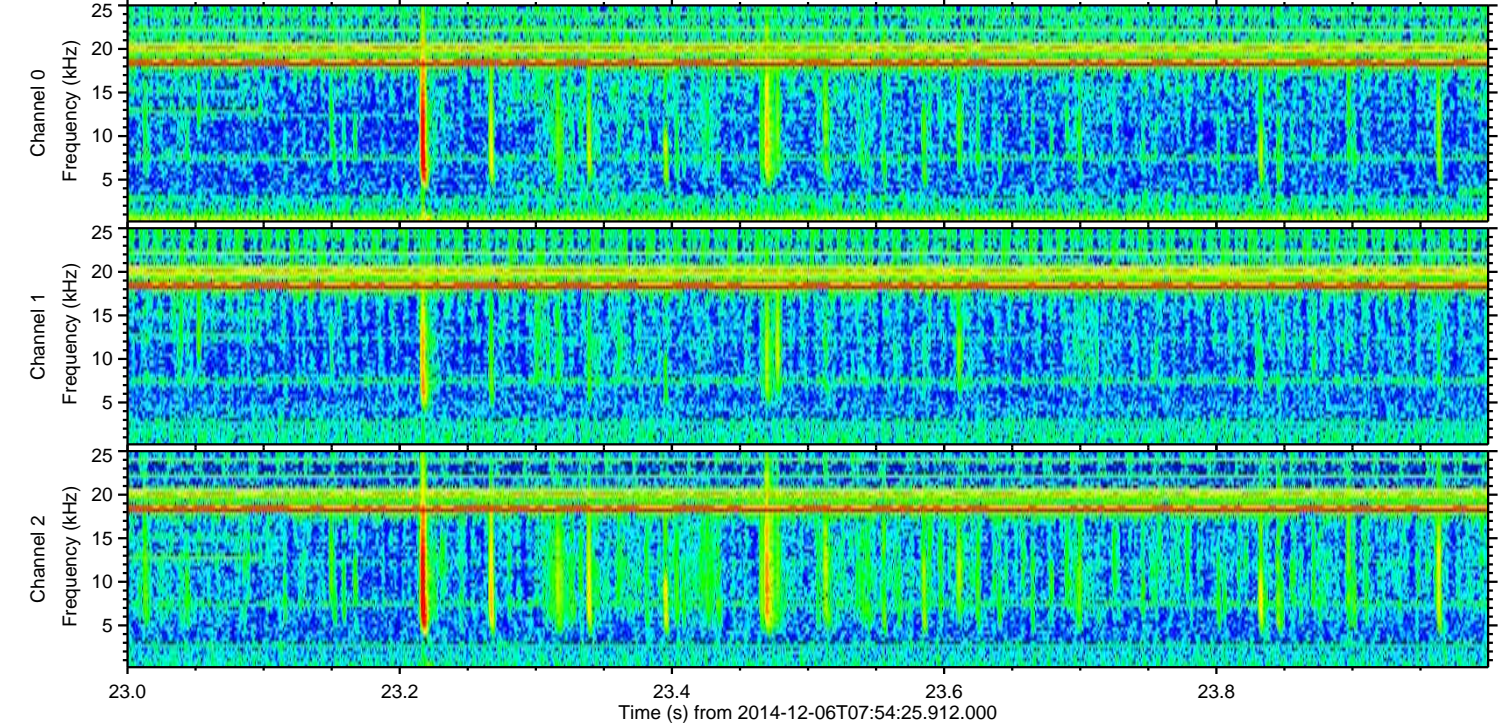
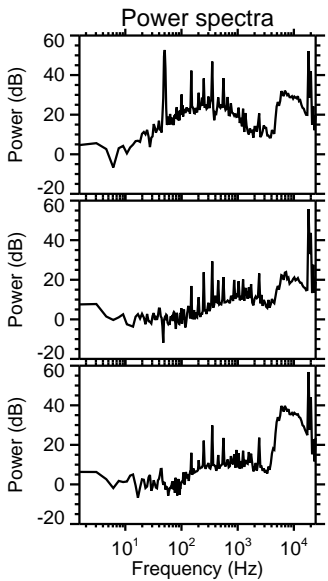
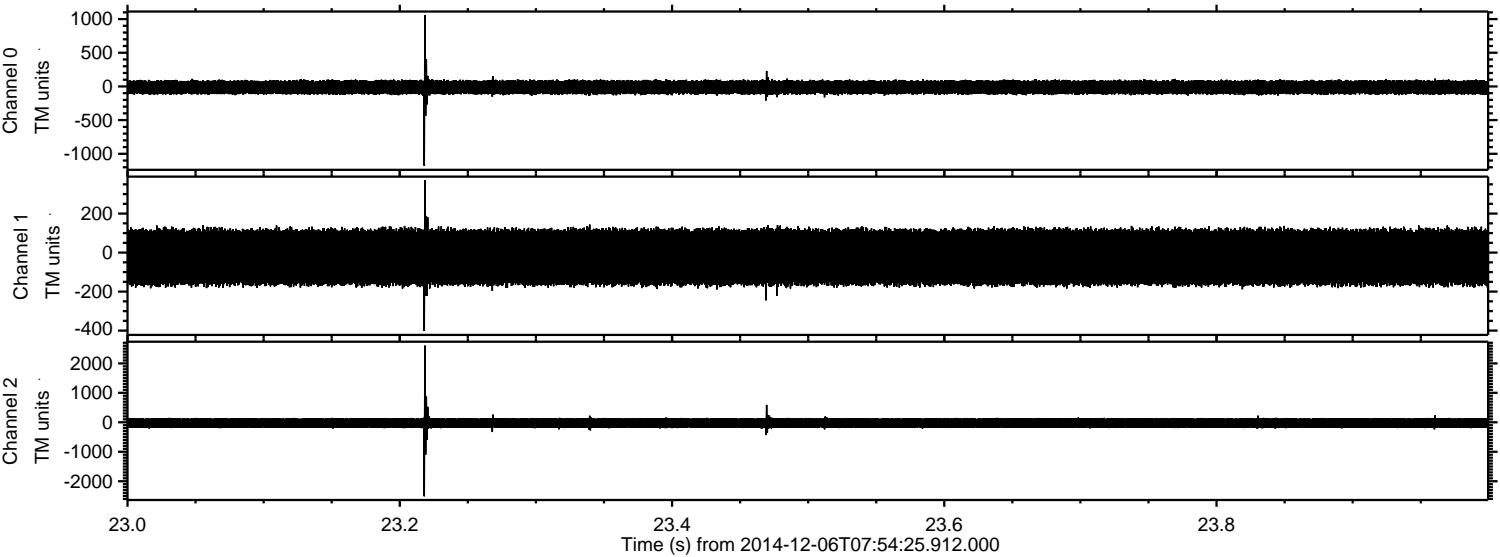
Processed Sat Dec 6 09:03:41 2014 by ELM ver.2012-10-06 from 001\_\_elm20141206\_075424\_\_dat00.bin





ELMAVAN 3D WAVEFORMS (Measured data sampled at 50 kHz) 49731 packets of 144 samples from 2014-12-06T07:54:25.912.000. Part 24/144

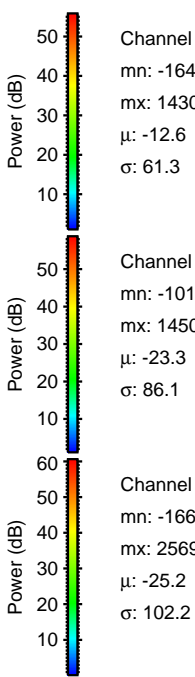
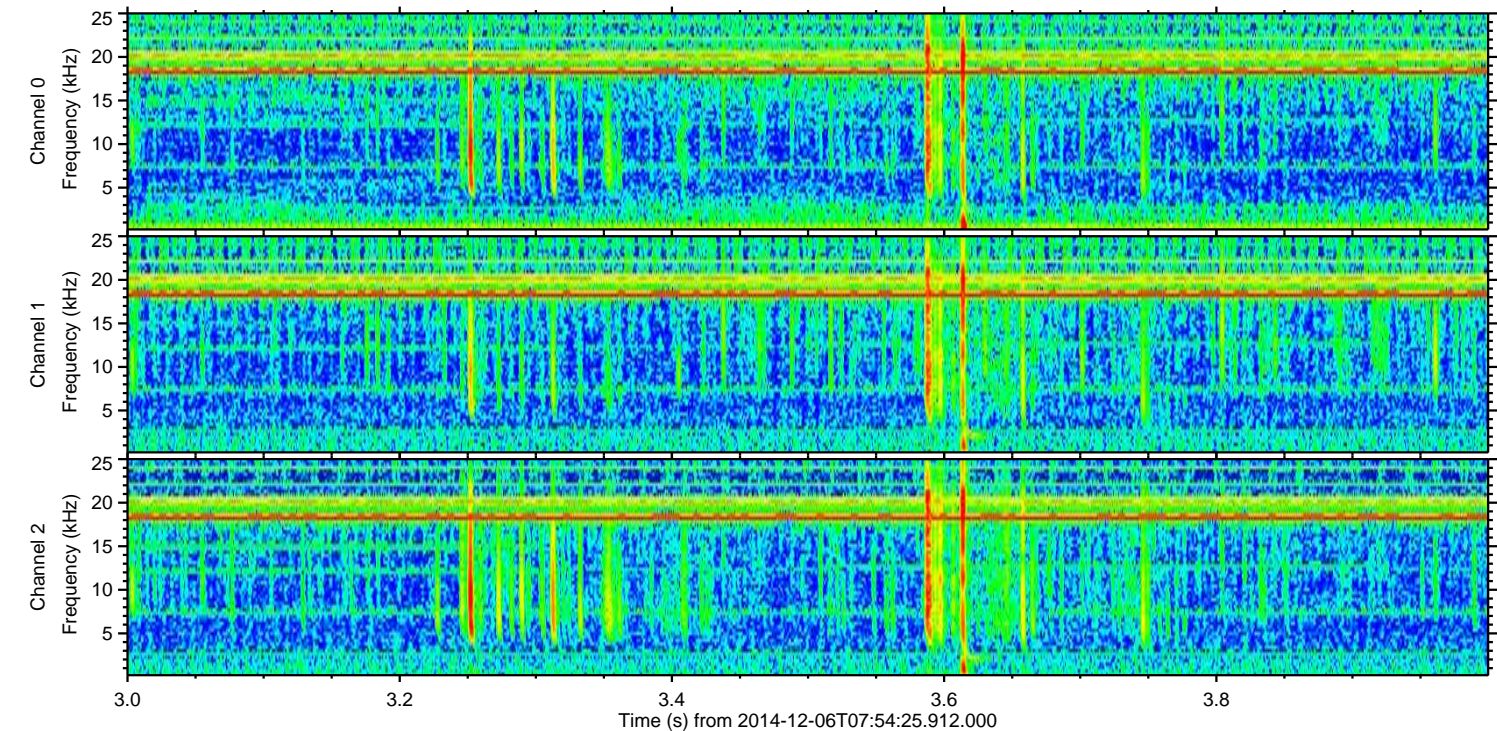
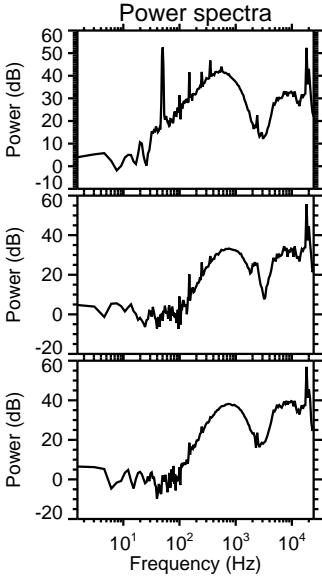
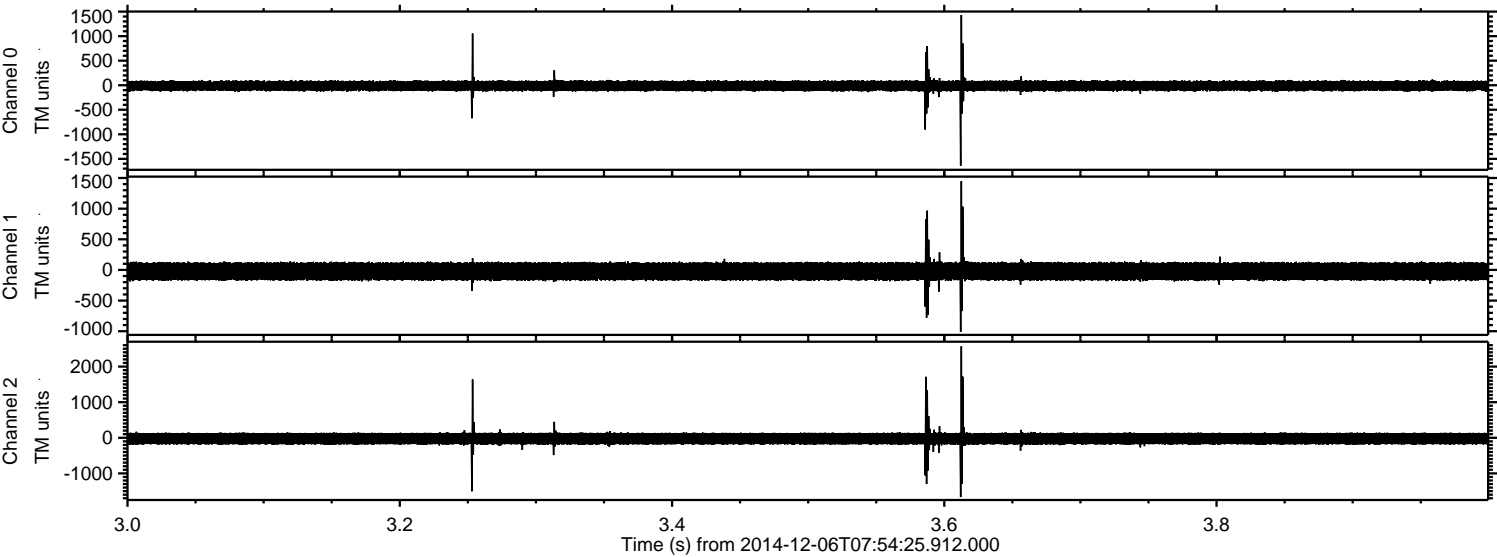
Processed Sat Dec 6 09:03:42 2014 by ELM ver.2012-10-06 from 001\_\_elm20141206\_075424\_\_dat00.bin





ELMAVAN 3D WAVEFORMS (Measured data sampled at 50 kHz) 49731 packets of 144 samples from 2014-12-06T07:54:25.912.000. Part 4/144

Processed Sat Dec 6 09:03:43 2014 by ELM ver.2012-10-06 from 001\_\_elm20141206\_075424\_\_dat00.bin





ELMAVAN 3D WAVEFORMS (Measured data sampled at 50 kHz) 49731 packets of 144 samples from 2014-12-06T07:54:25.912.000. Part 10/144

Processed Sat Dec 6 09:03:44 2014 by ELM ver.2012-10-06 from 001\_\_elm20141206\_075424\_\_dat00.bin

