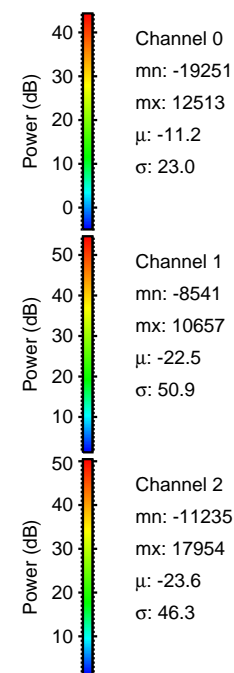
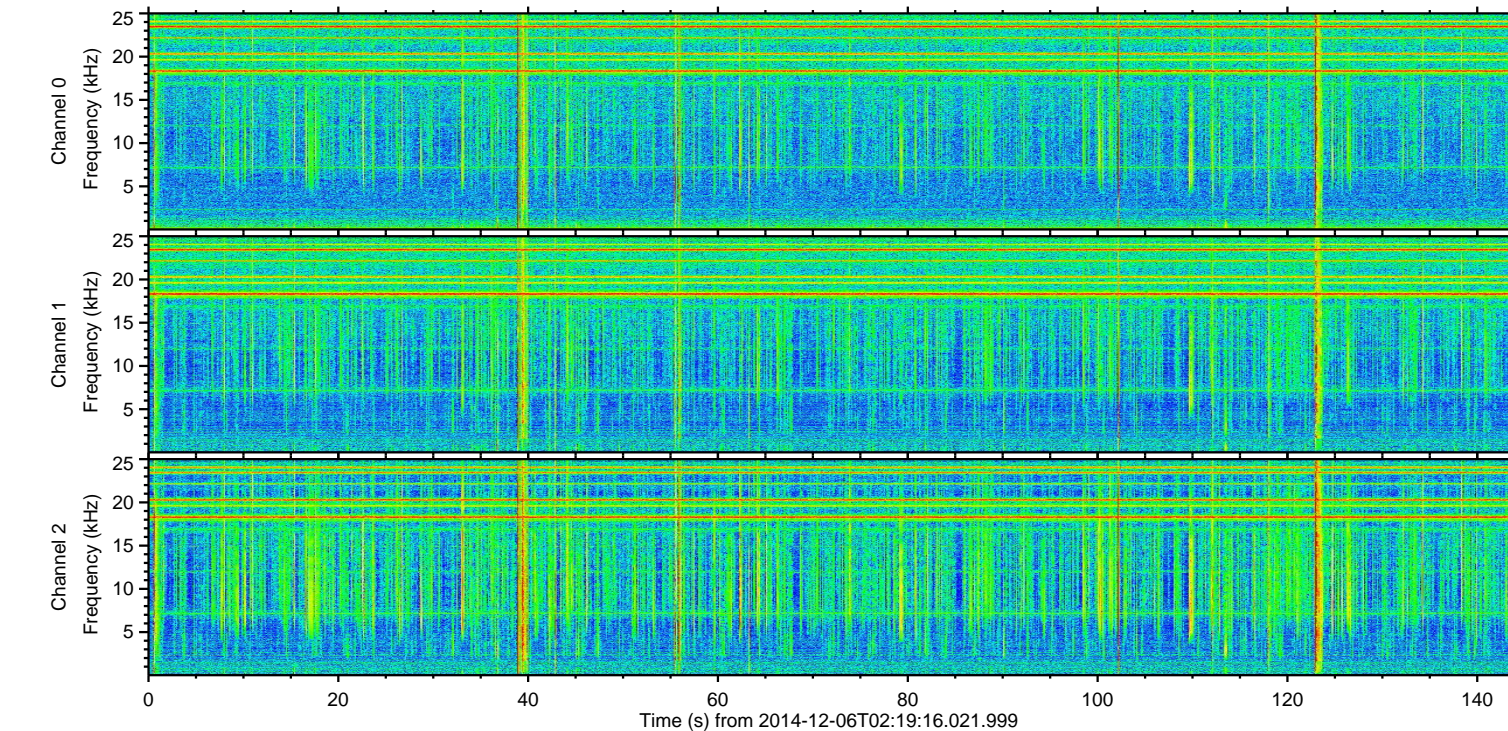
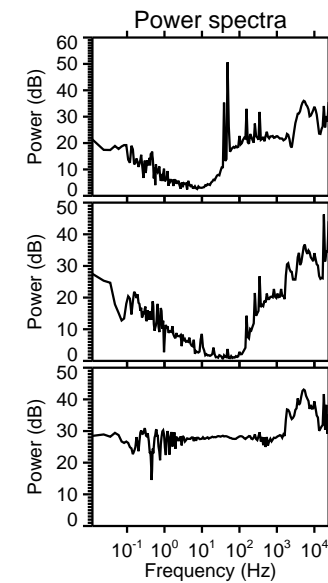
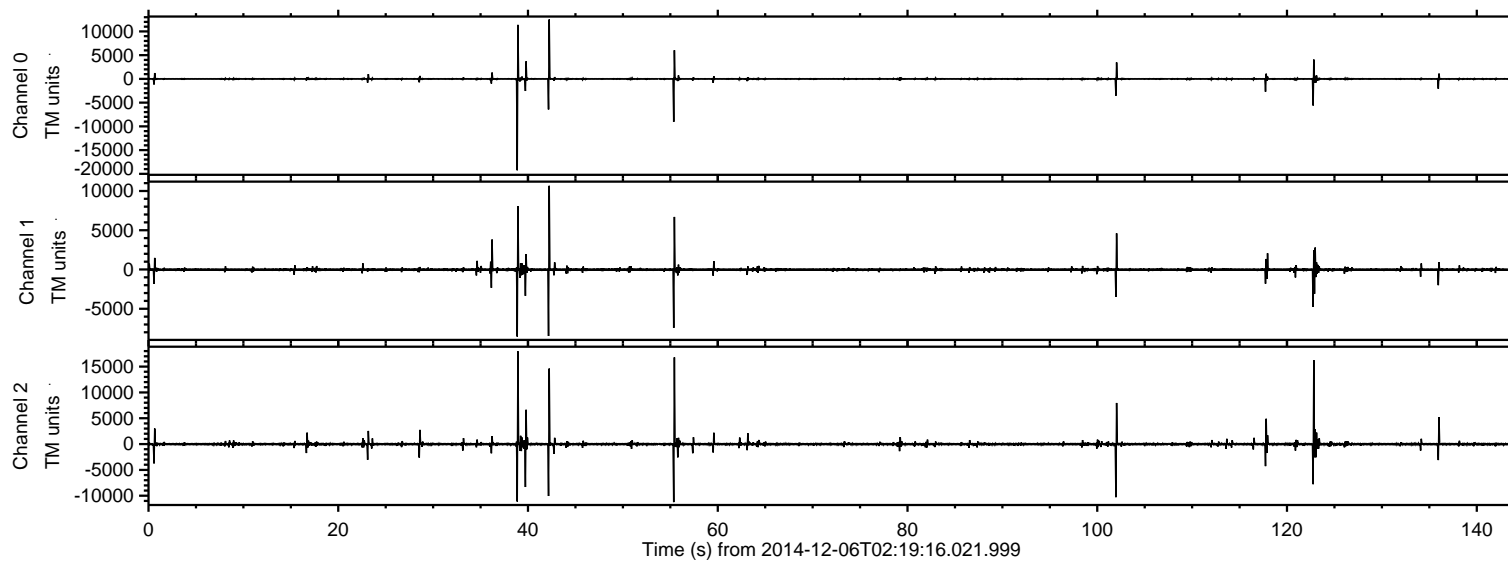


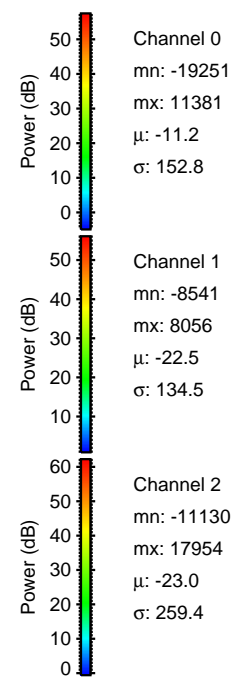
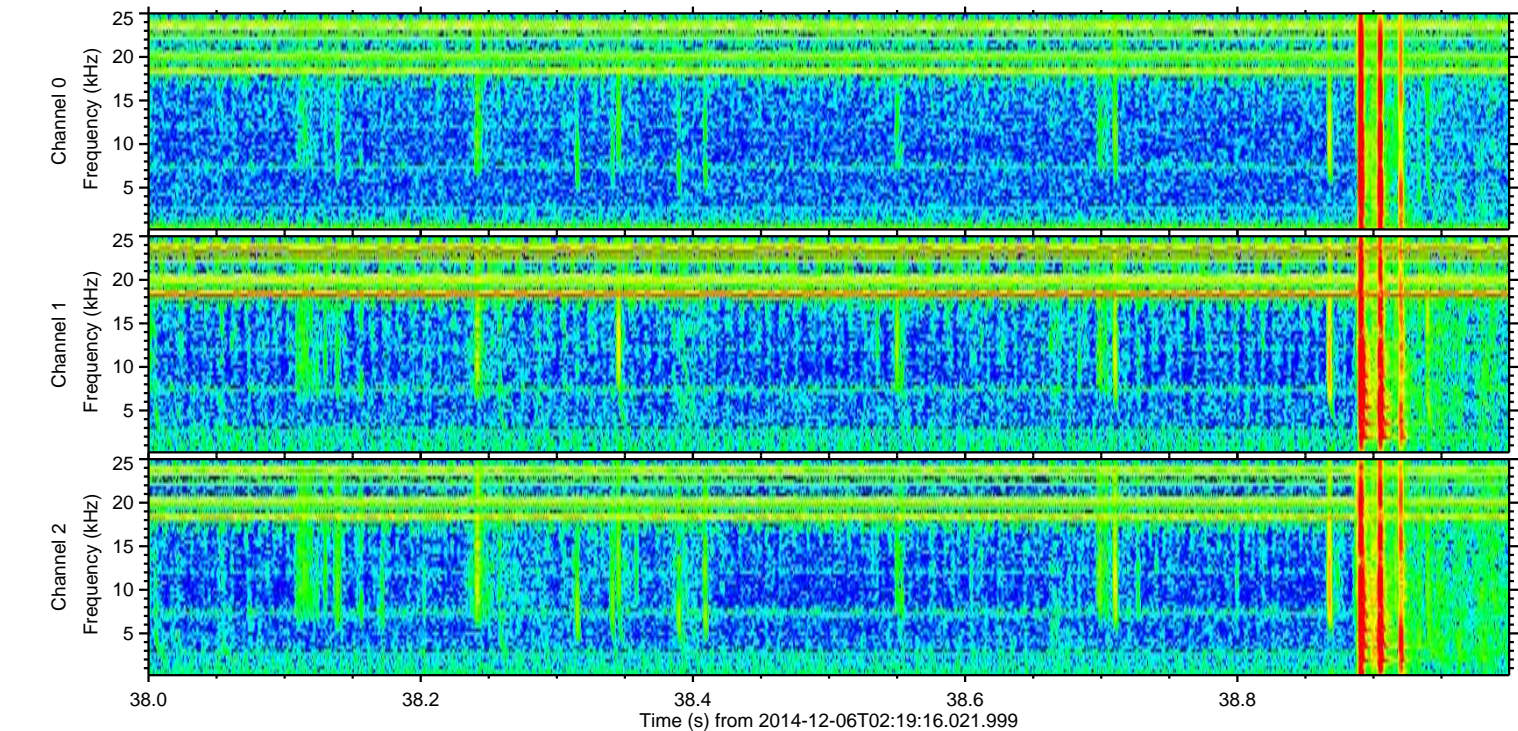
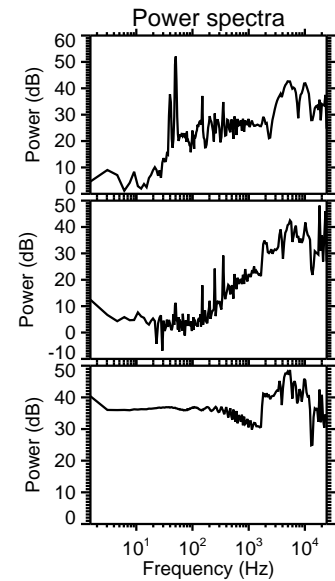
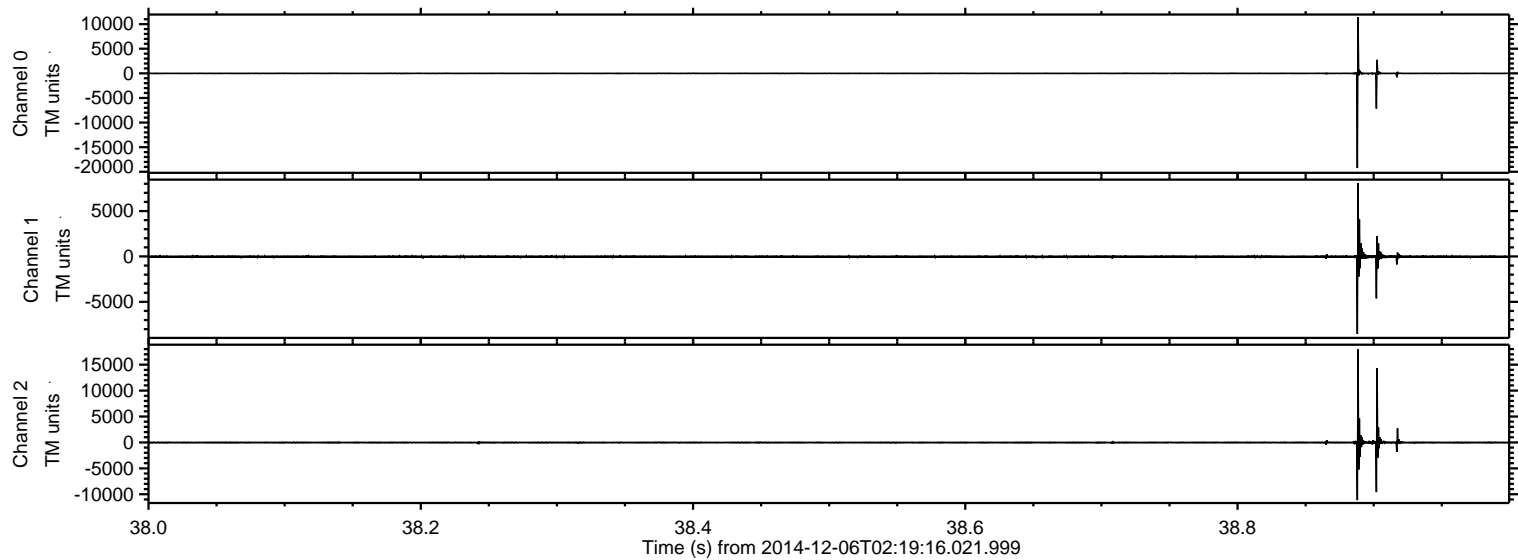
ELMAVAN 3D WAVEFORMS (Measured data sampled at 50 kHz) 49796 packets of 144 samples from 2014-12-06T02:19:16.021.999.

Processed Sat Dec 6 03:27:32 2014 by ELM ver.2012-10-06 from 001__elm20141206_021915__dat00.bin

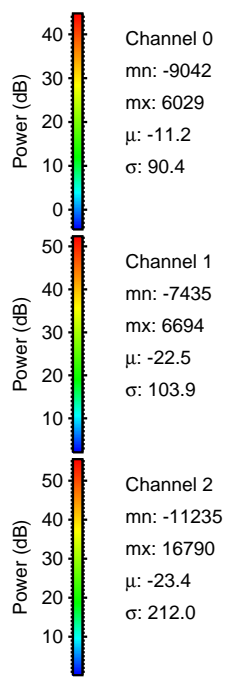
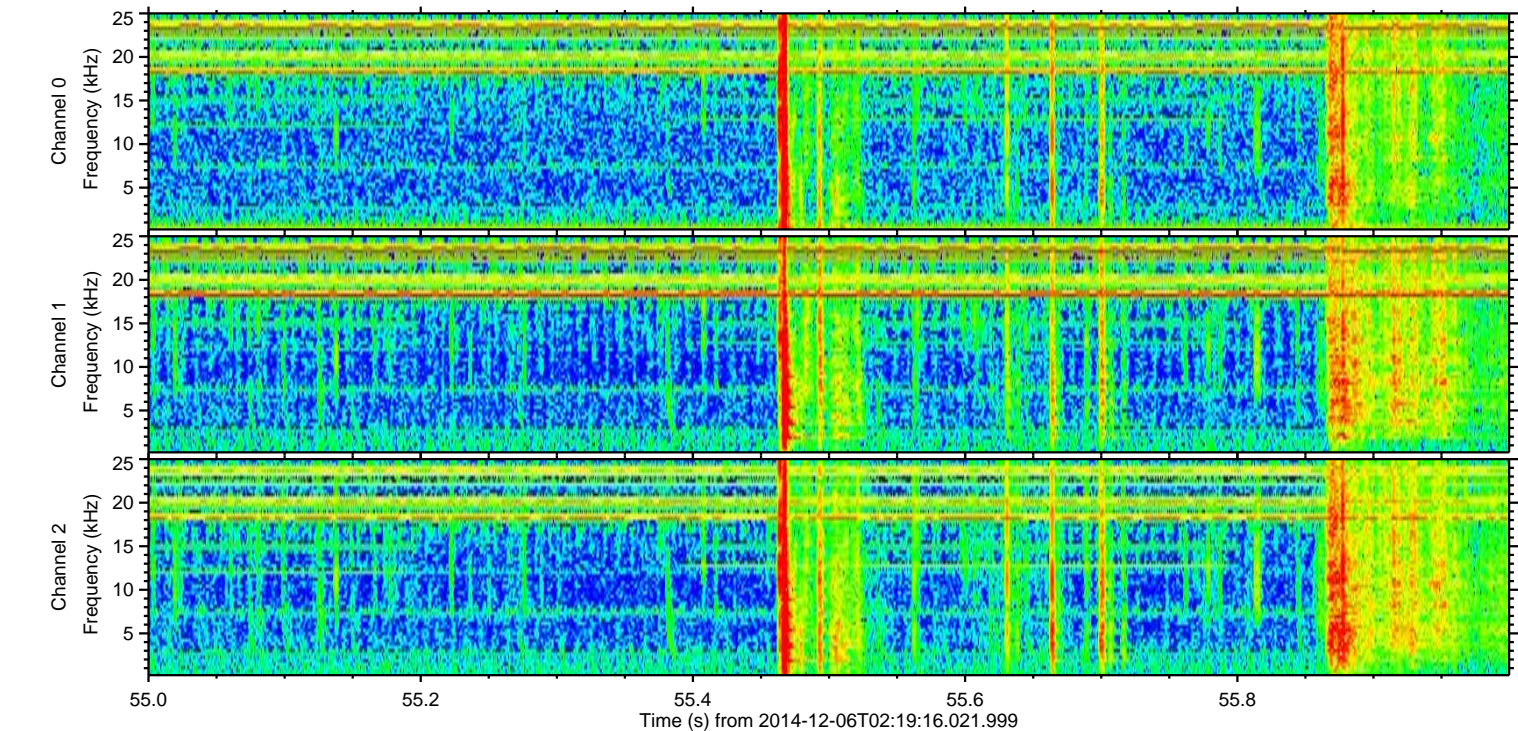
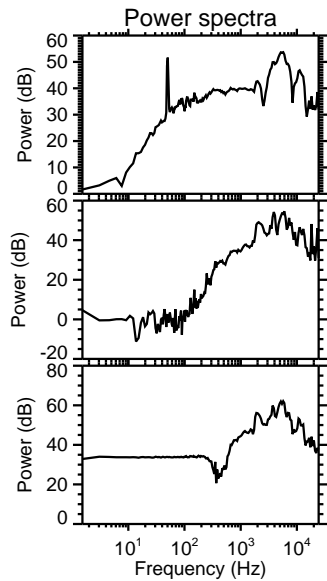
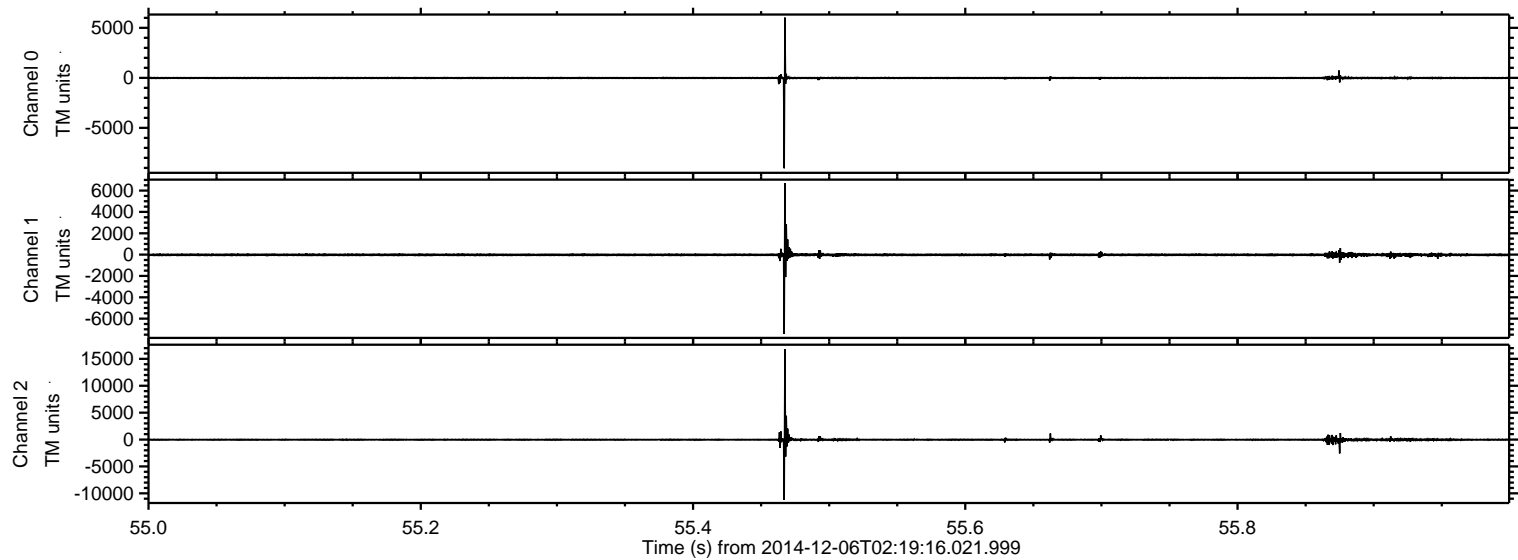


ELMAVAN 3D WAVEFORMS (Measured data sampled at 50 kHz) 49796 packets of 144 samples from 2014-12-06T02:19:16.021.999. Part 39/144

Processed Sat Dec 6 03:27:43 2014 by ELM ver.2012-10-06 from 001__elm20141206_021915__dat00.bin

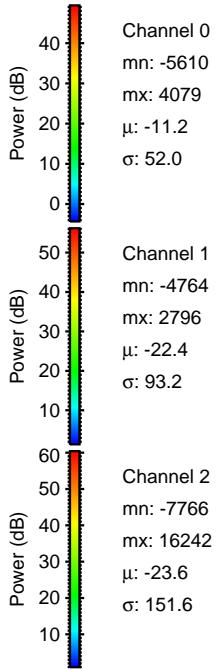
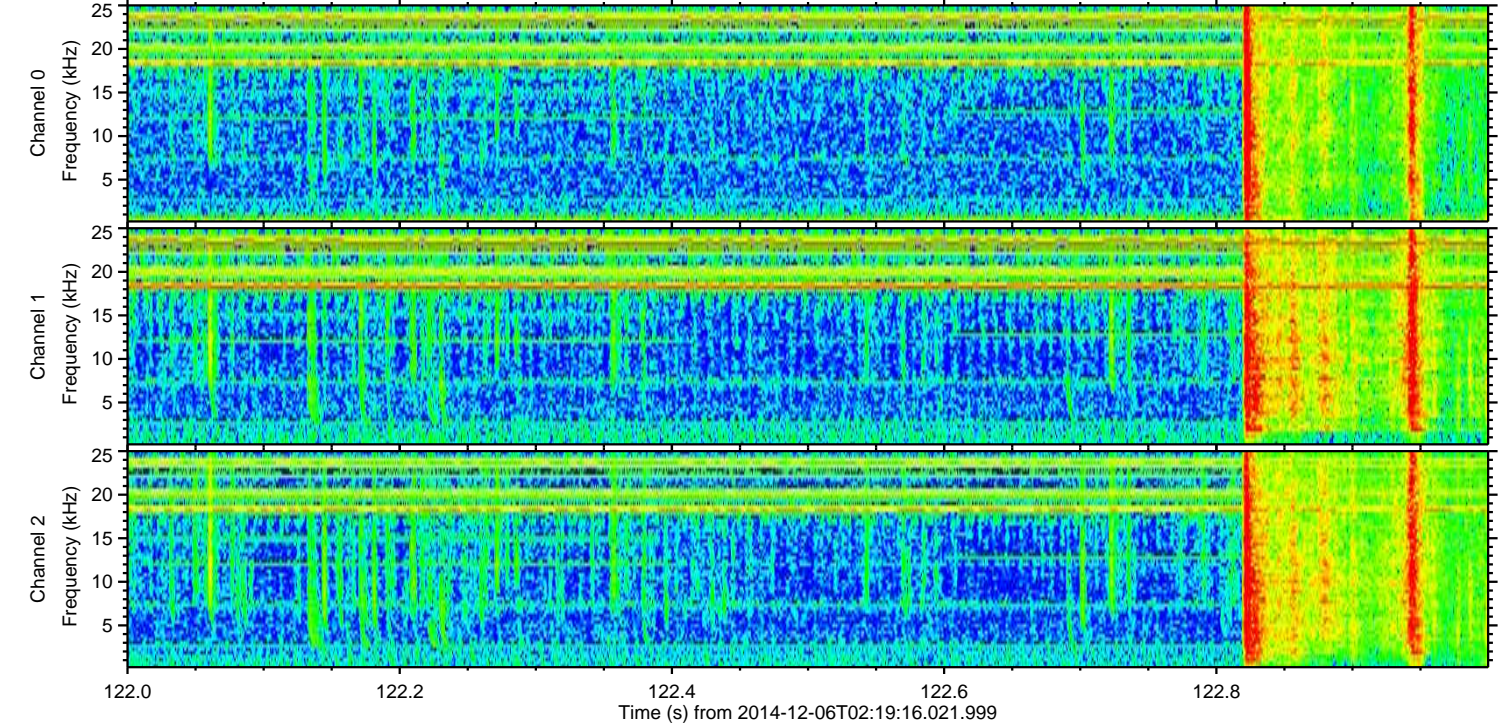
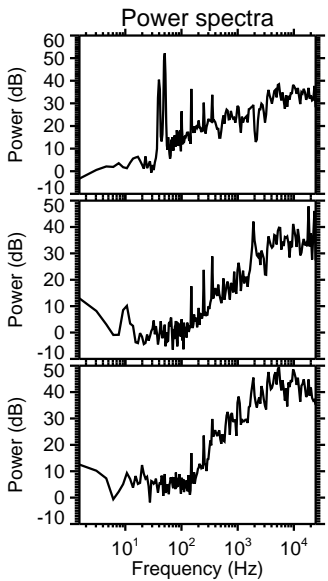
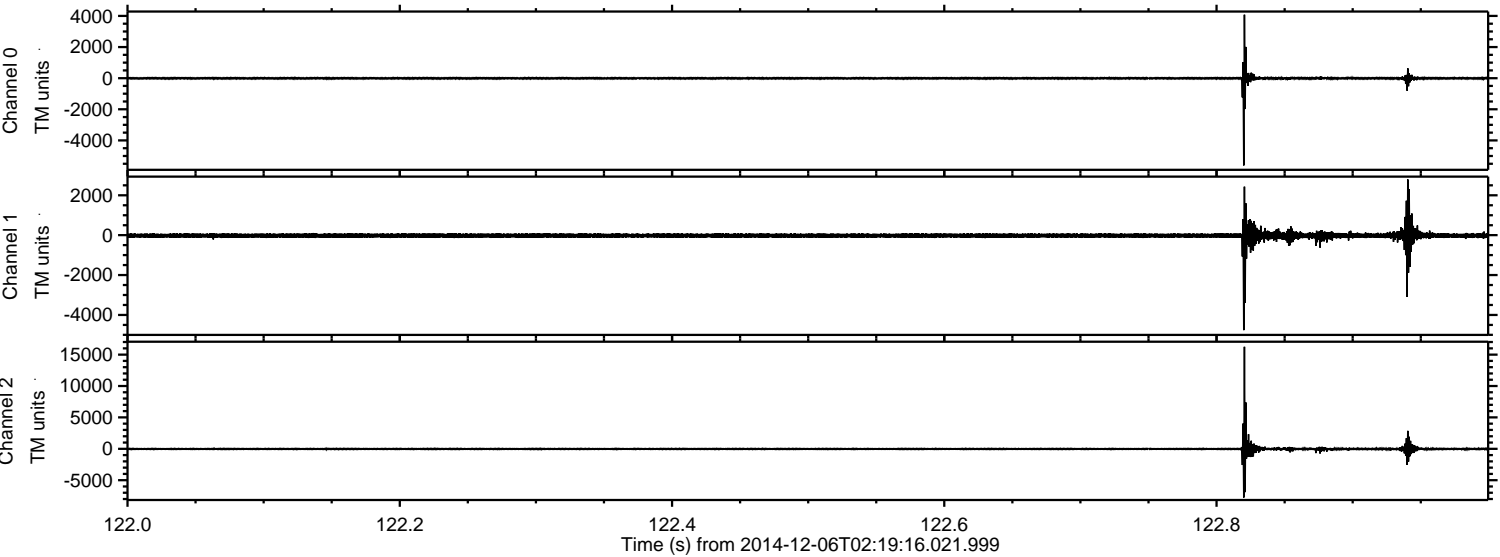


Processed Sat Dec 6 03:27:44 2014 by ELM ver.2012-10-06 from 001__elm20141206_021915__dat00.bin



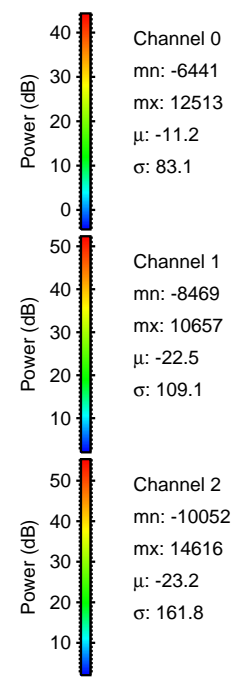
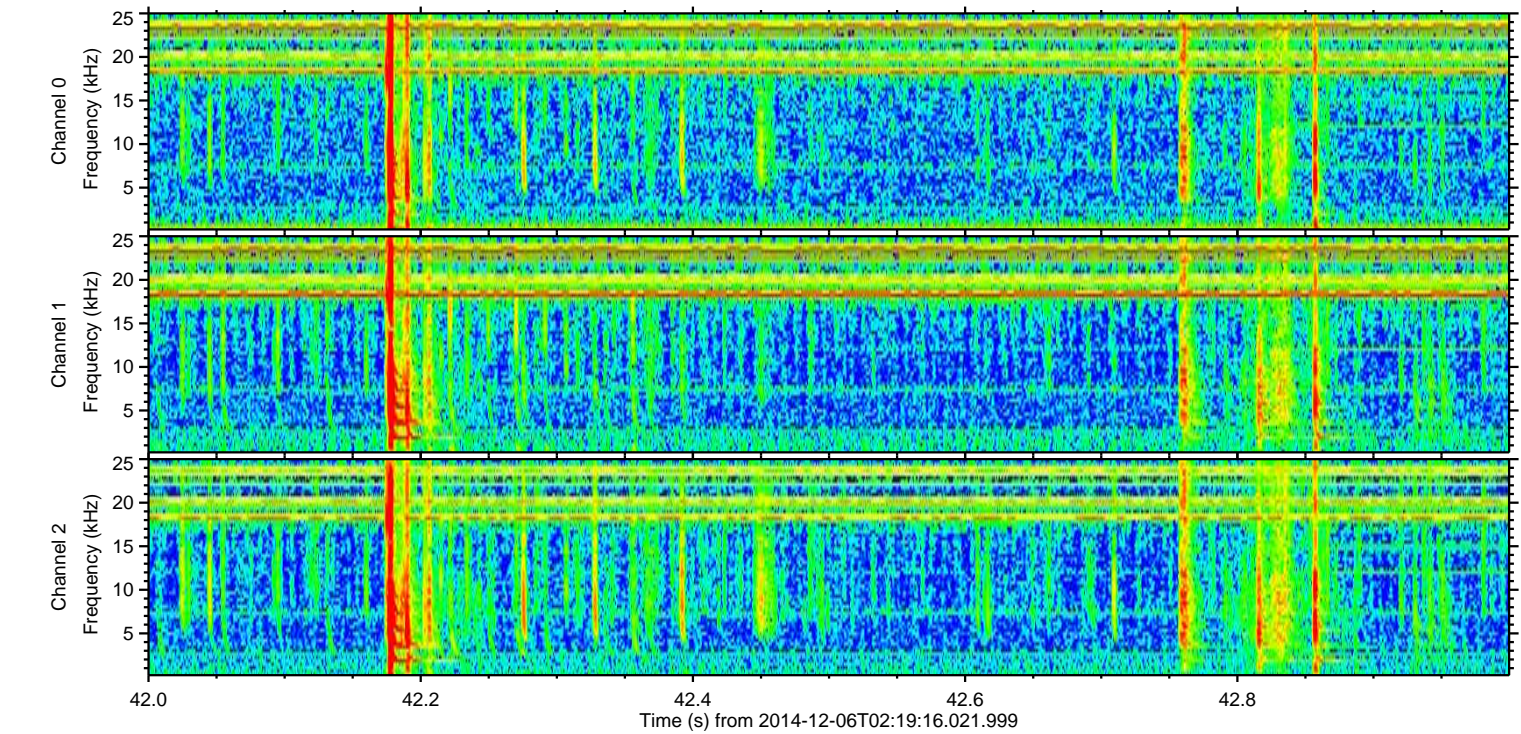
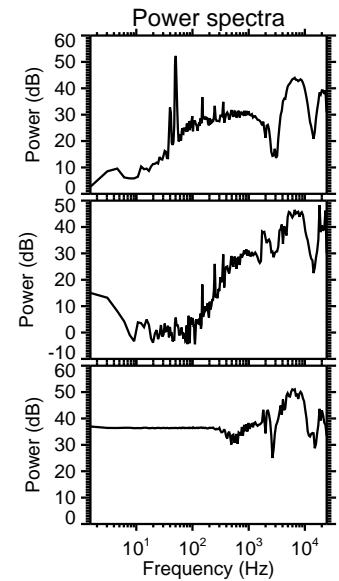
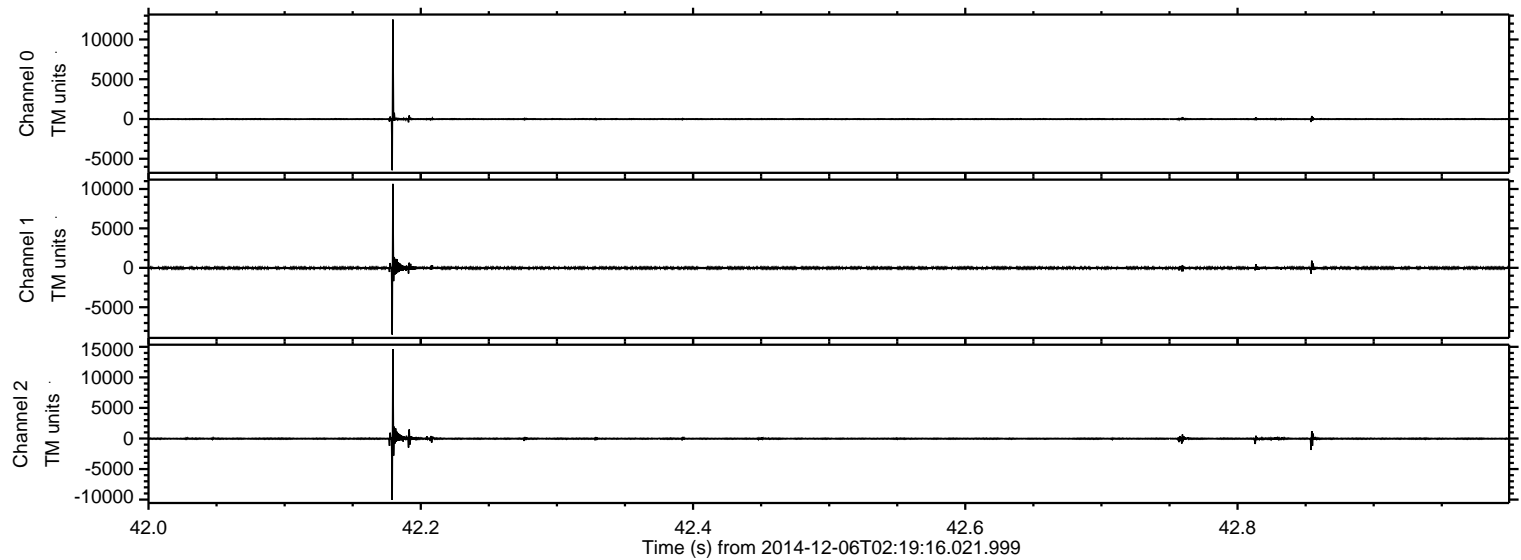
ELMAVAN 3D WAVEFORMS (Measured data sampled at 50 kHz) 49796 packets of 144 samples from 2014-12-06T02:19:16.021.999. Part 123/144

Processed Sat Dec 6 03:27:45 2014 by ELM ver.2012-10-06 from 001__elm20141206_021915__dat00.bin



ELMAVAN 3D WAVEFORMS (Measured data sampled at 50 kHz) 49796 packets of 144 samples from 2014-12-06T02:19:16.021.999. Part 43/144

Processed Sat Dec 6 03:27:46 2014 by ELM ver.2012-10-06 from 001__elm20141206_021915__dat00.bin



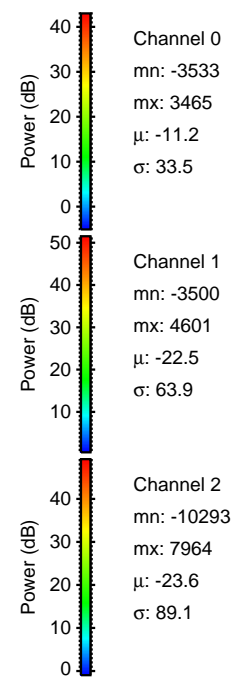
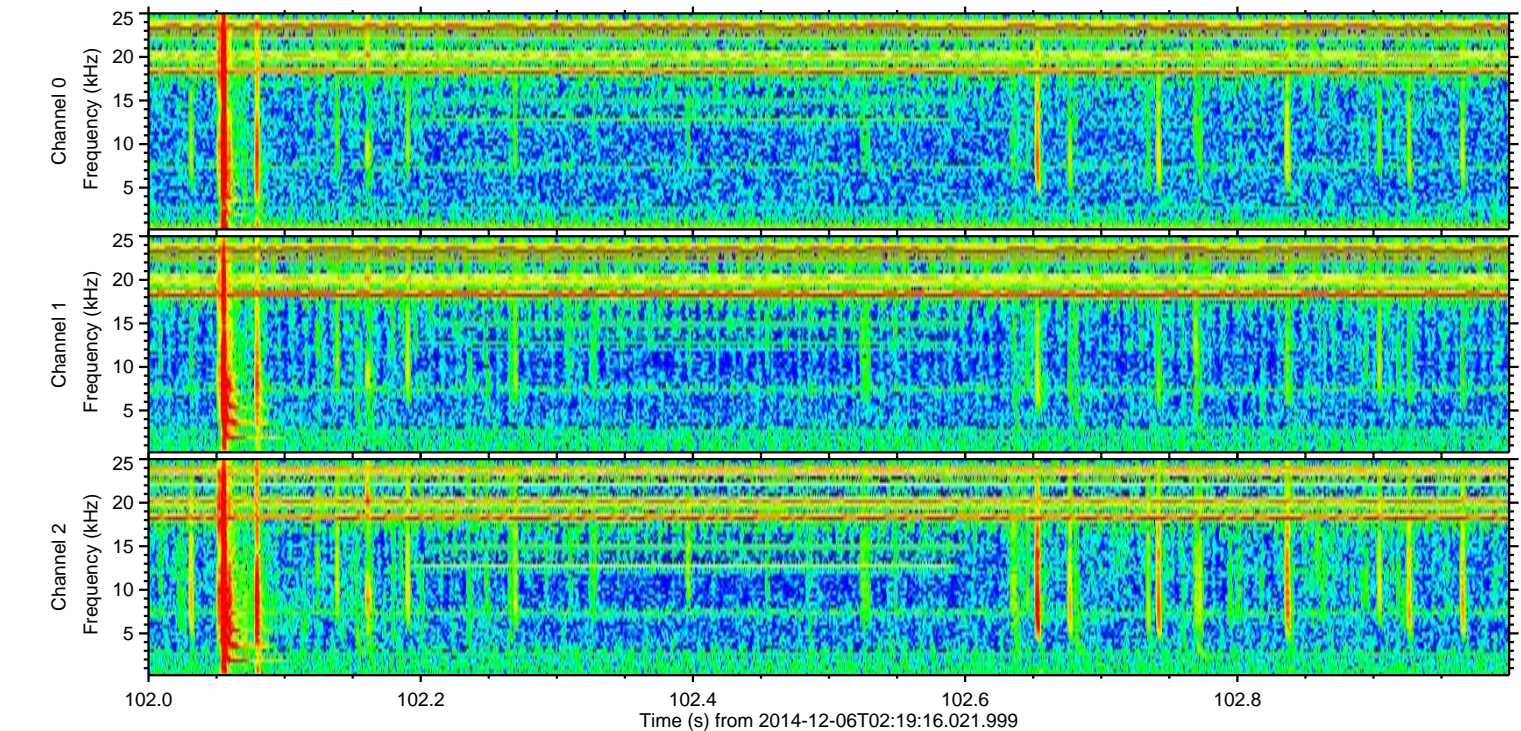
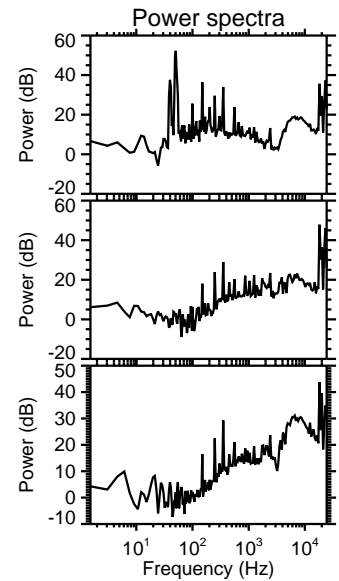
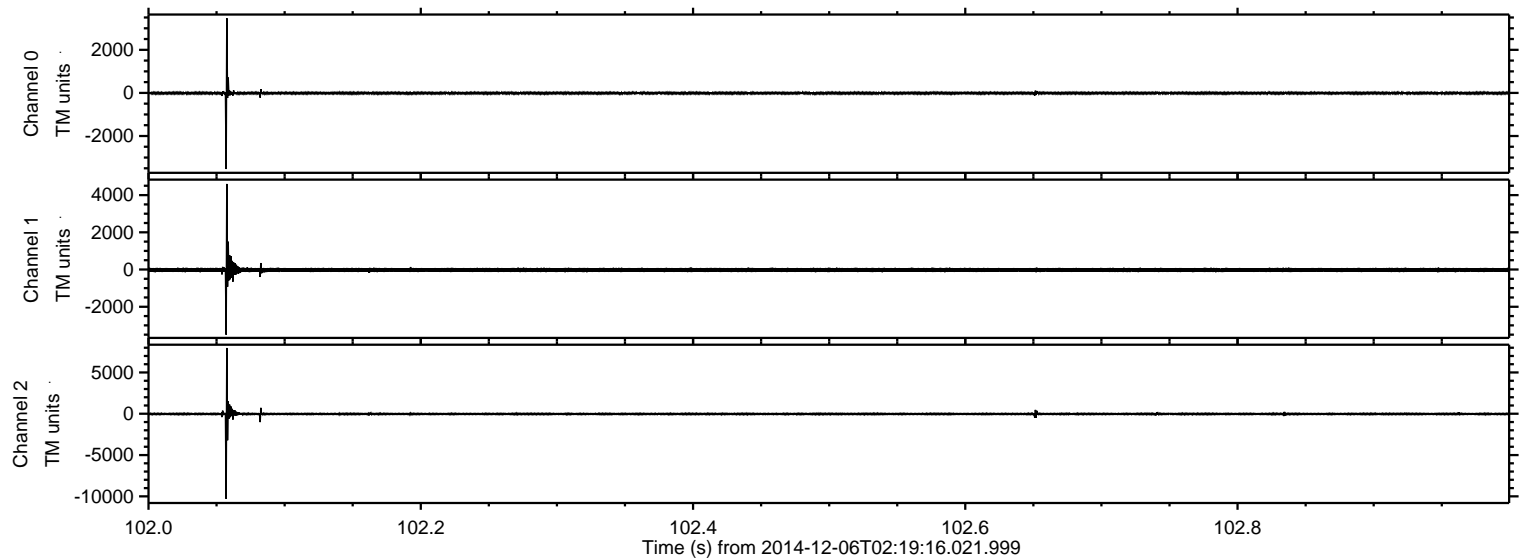
Channel 0
mn: -6441
mx: 12513
 μ : -11.2
 σ : 83.1

Channel 1
mn: -8469
mx: 10657
 μ : -22.5
 σ : 109.1

Channel 2
mn: -10052
mx: 14616
 μ : -23.2
 σ : 161.8

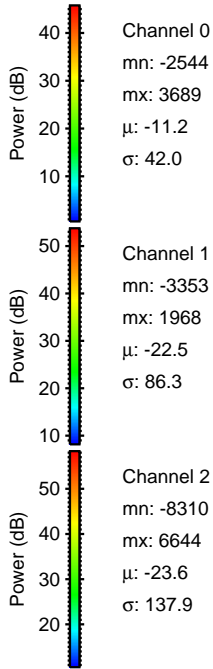
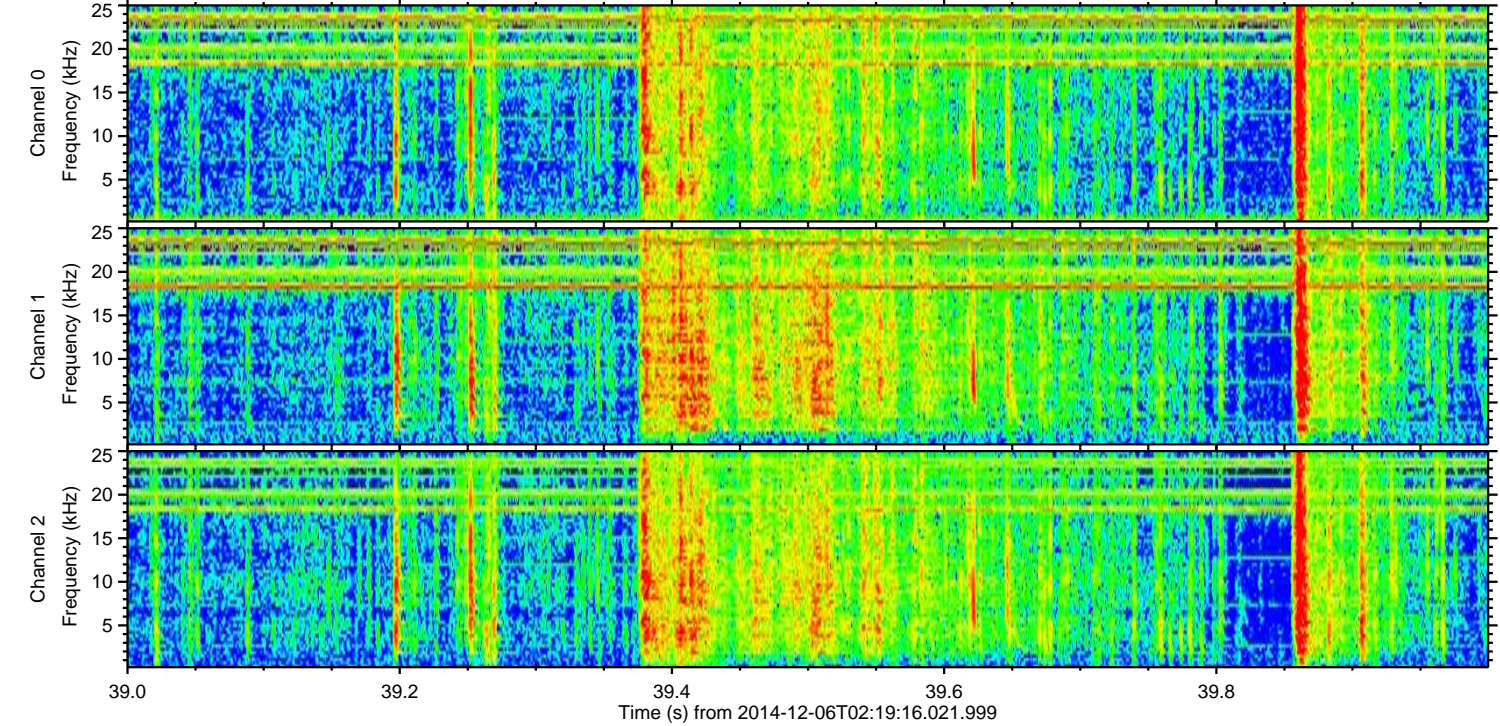
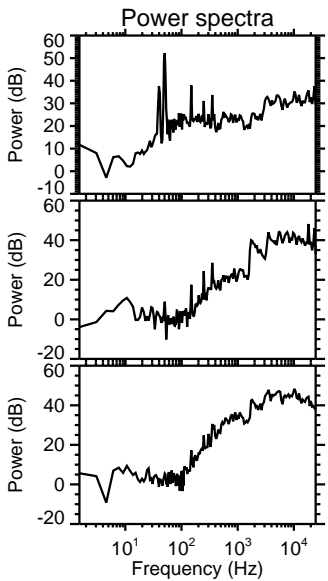
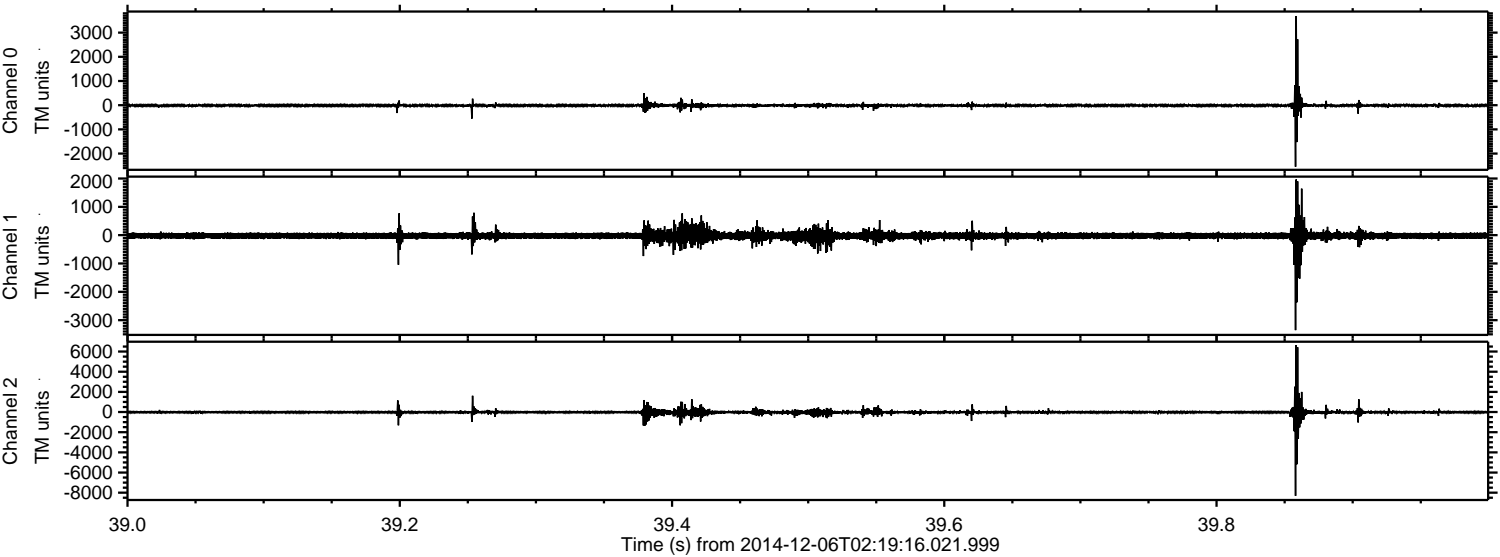
ELMAVAN 3D WAVEFORMS (Measured data sampled at 50 kHz) 49796 packets of 144 samples from 2014-12-06T02:19:16.021.999. Part 103/144

Processed Sat Dec 6 03:27:47 2014 by ELM ver.2012-10-06 from 001__elm20141206_021915__dat00.bin



ELMAVAN 3D WAVEFORMS (Measured data sampled at 50 kHz) 49796 packets of 144 samples from 2014-12-06T02:19:16.021.999. Part 40/144

Processed Sat Dec 6 03:27:48 2014 by ELM ver.2012-10-06 from 001__elm20141206_021915__dat00.bin



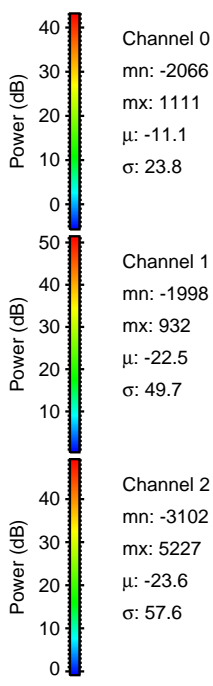
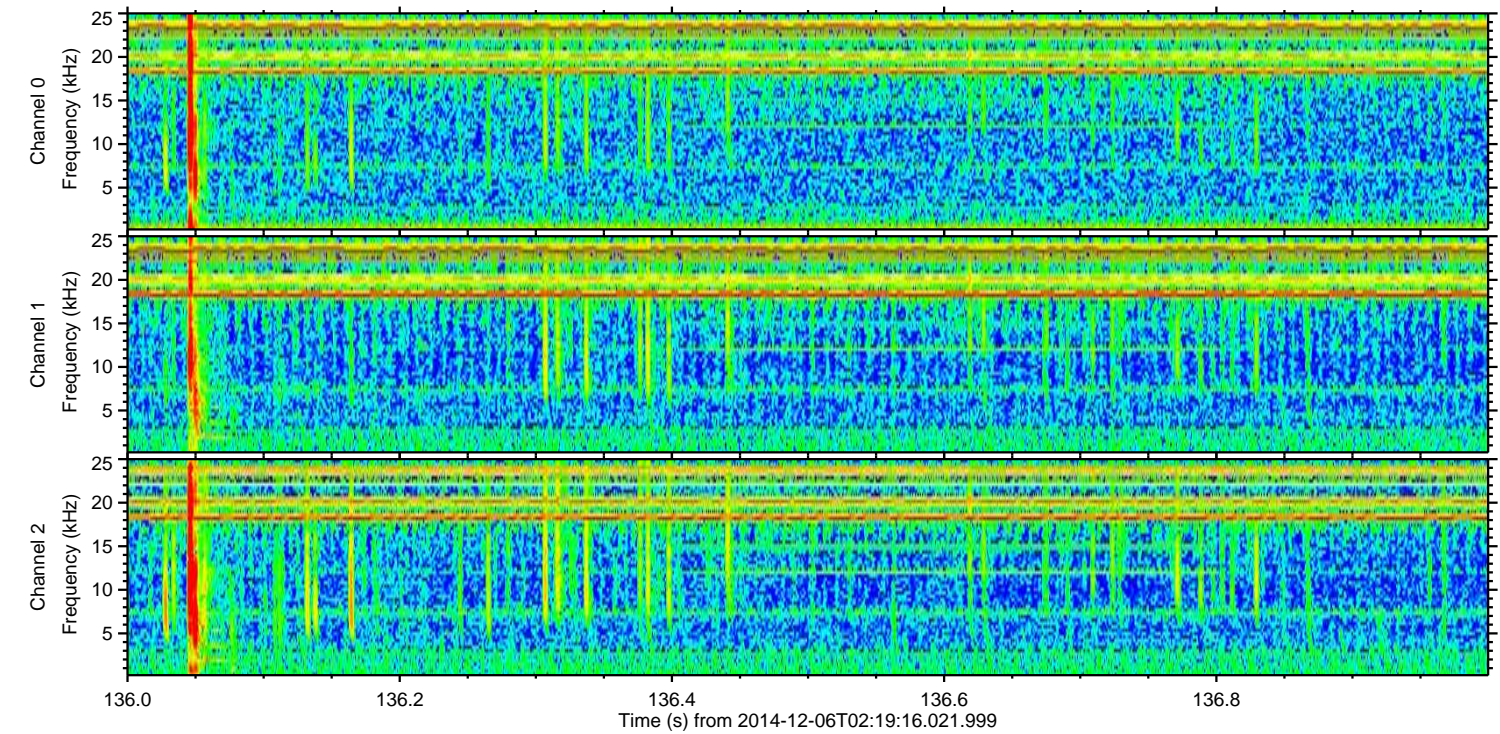
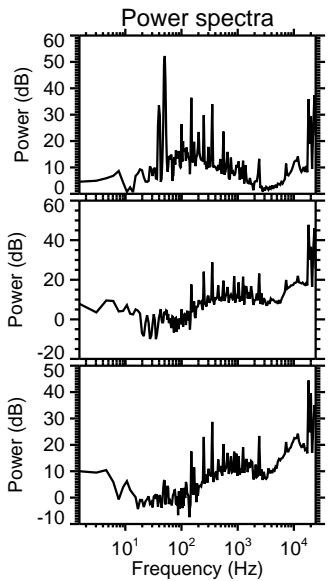
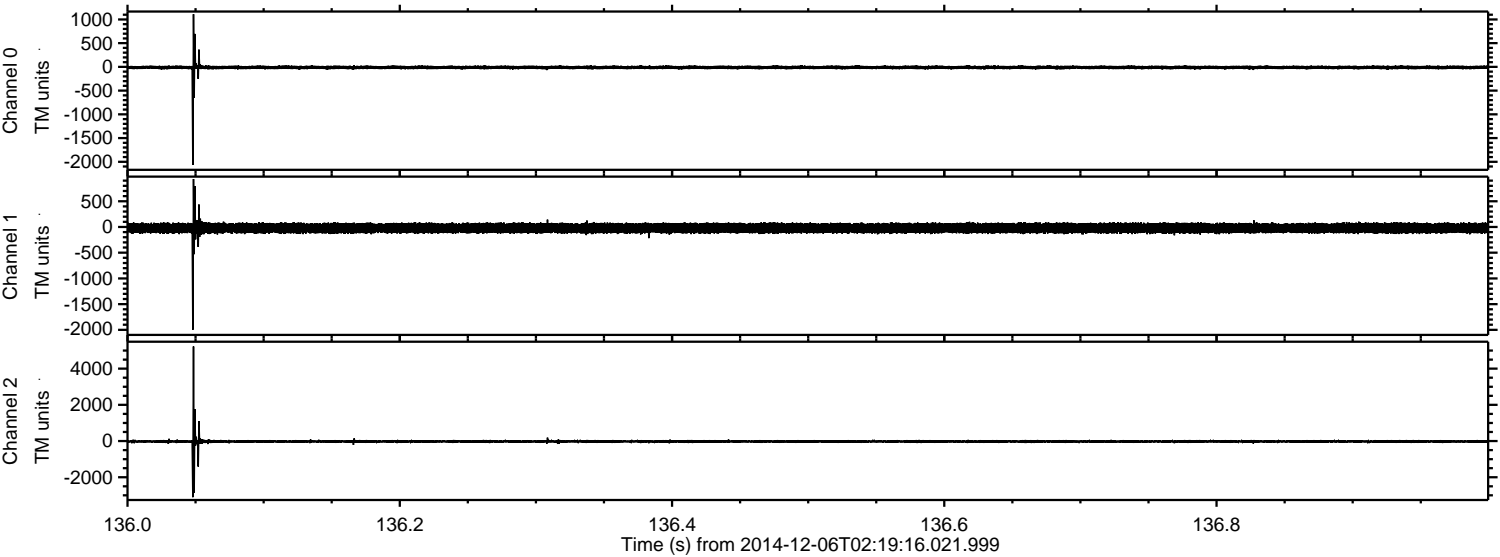
Channel 0
mn: -2544
mx: 3689
 μ : -11.2
 σ : 42.0

Channel 1
mn: -3353
mx: 1968
 μ : -22.5
 σ : 86.3

Channel 2
mn: -8310
mx: 6644
 μ : -23.6
 σ : 137.9

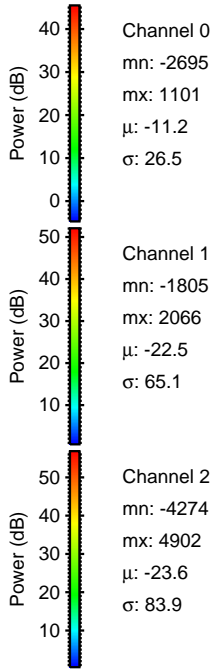
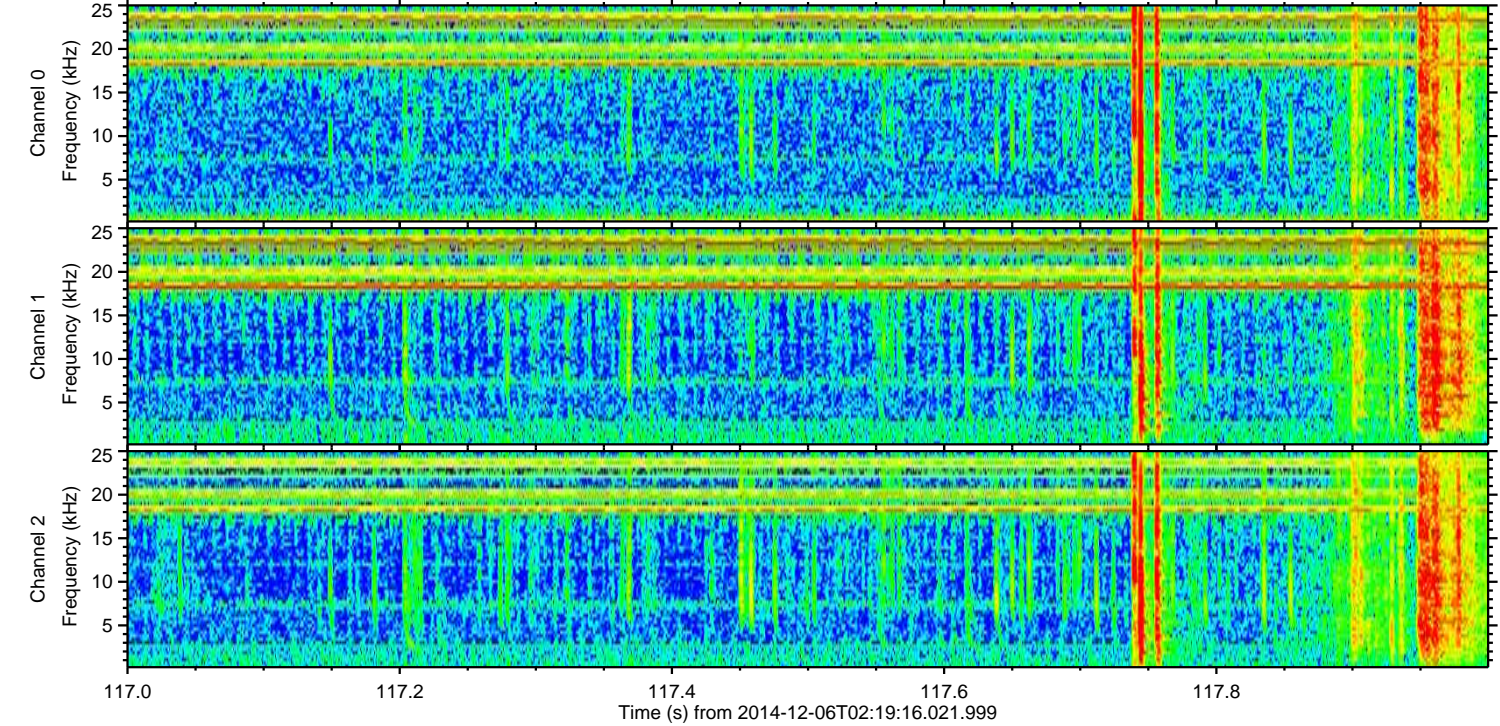
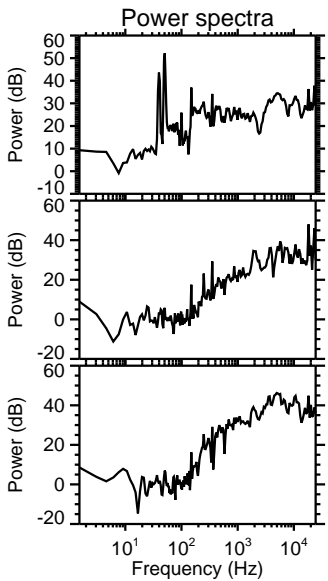
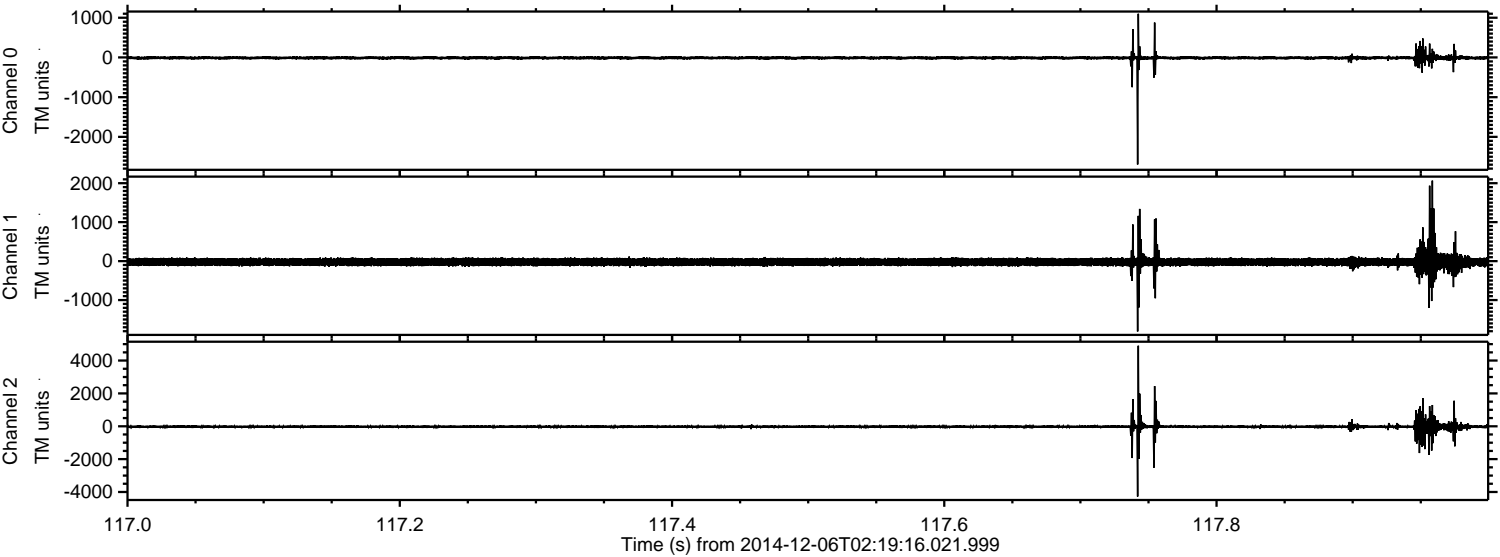
ELMAVAN 3D WAVEFORMS (Measured data sampled at 50 kHz) 49796 packets of 144 samples from 2014-12-06T02:19:16.021.999. Part 137/144

Processed Sat Dec 6 03:27:49 2014 by ELM ver.2012-10-06 from 001__elm20141206_021915__dat00.bin



ELMAVAN 3D WAVEFORMS (Measured data sampled at 50 kHz) 49796 packets of 144 samples from 2014-12-06T02:19:16.021.999. Part 118/144

Processed Sat Dec 6 03:27:50 2014 by ELM ver.2012-10-06 from 001__elm20141206_021915__dat00.bin

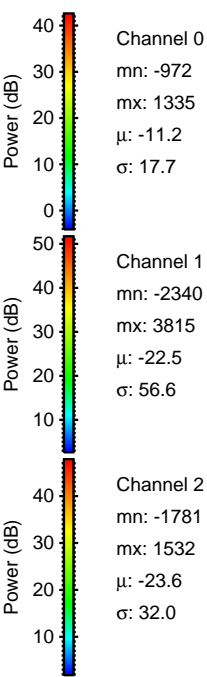
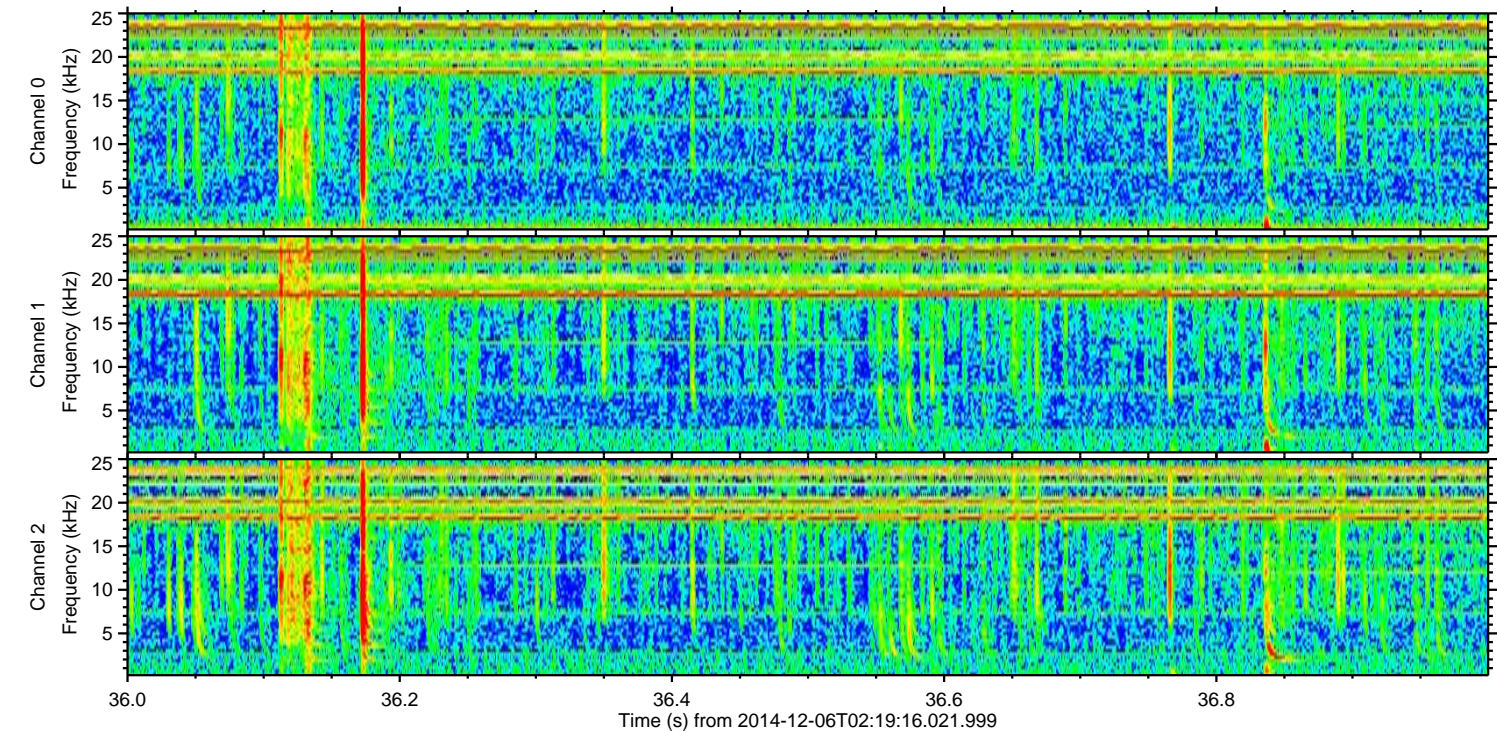
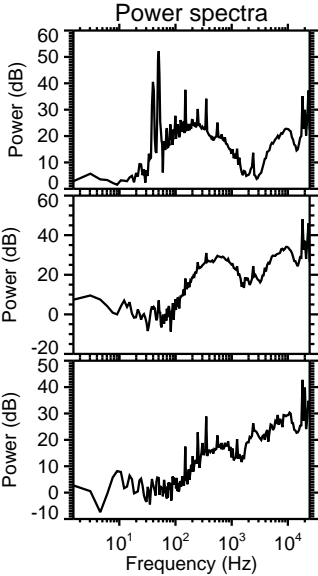
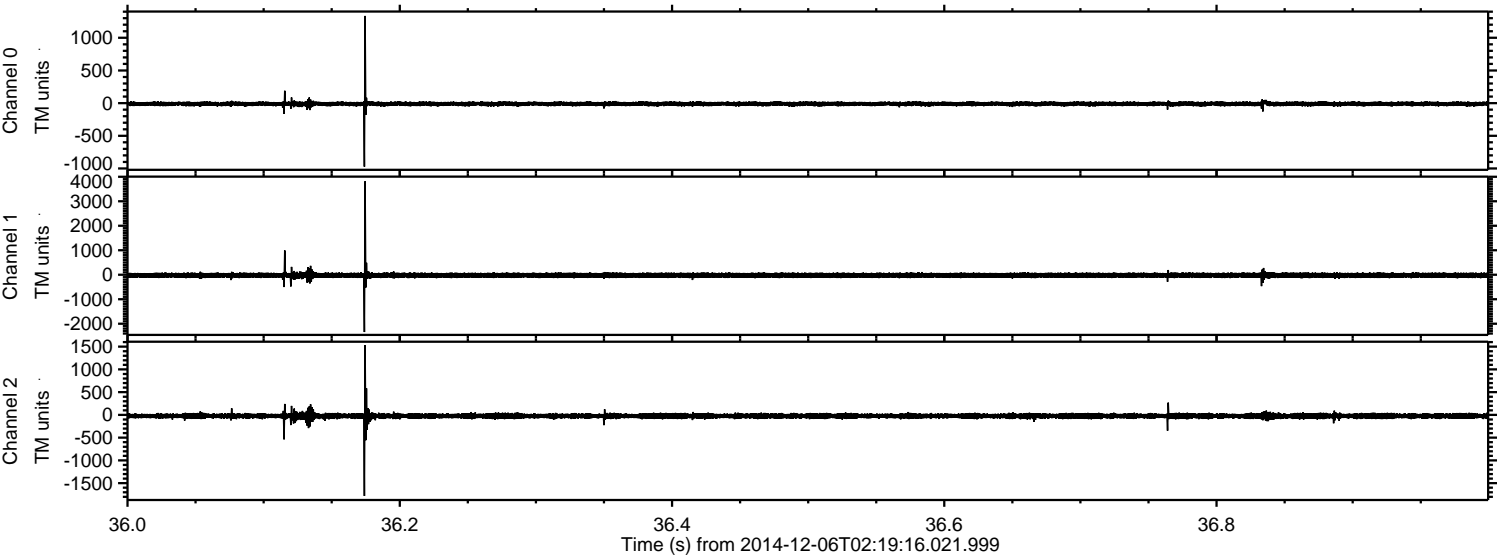


Channel 0
mn: -2695
mx: 1101
 μ : -11.2
 σ : 26.5

Channel 1
mn: -1805
mx: 2066
 μ : -22.5
 σ : 65.1

Channel 2
mn: -4274
mx: 4902
 μ : -23.6
 σ : 83.9

Processed Sat Dec 6 03:27:51 2014 by ELM ver.2012-10-06 from 001__elm20141206_021915__dat00.bin



Processed Sat Dec 6 03:27:52 2014 by ELM ver.2012-10-06 from 001__elm20141206_021915__dat00.bin

