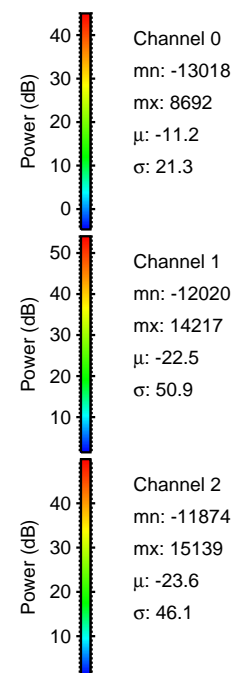
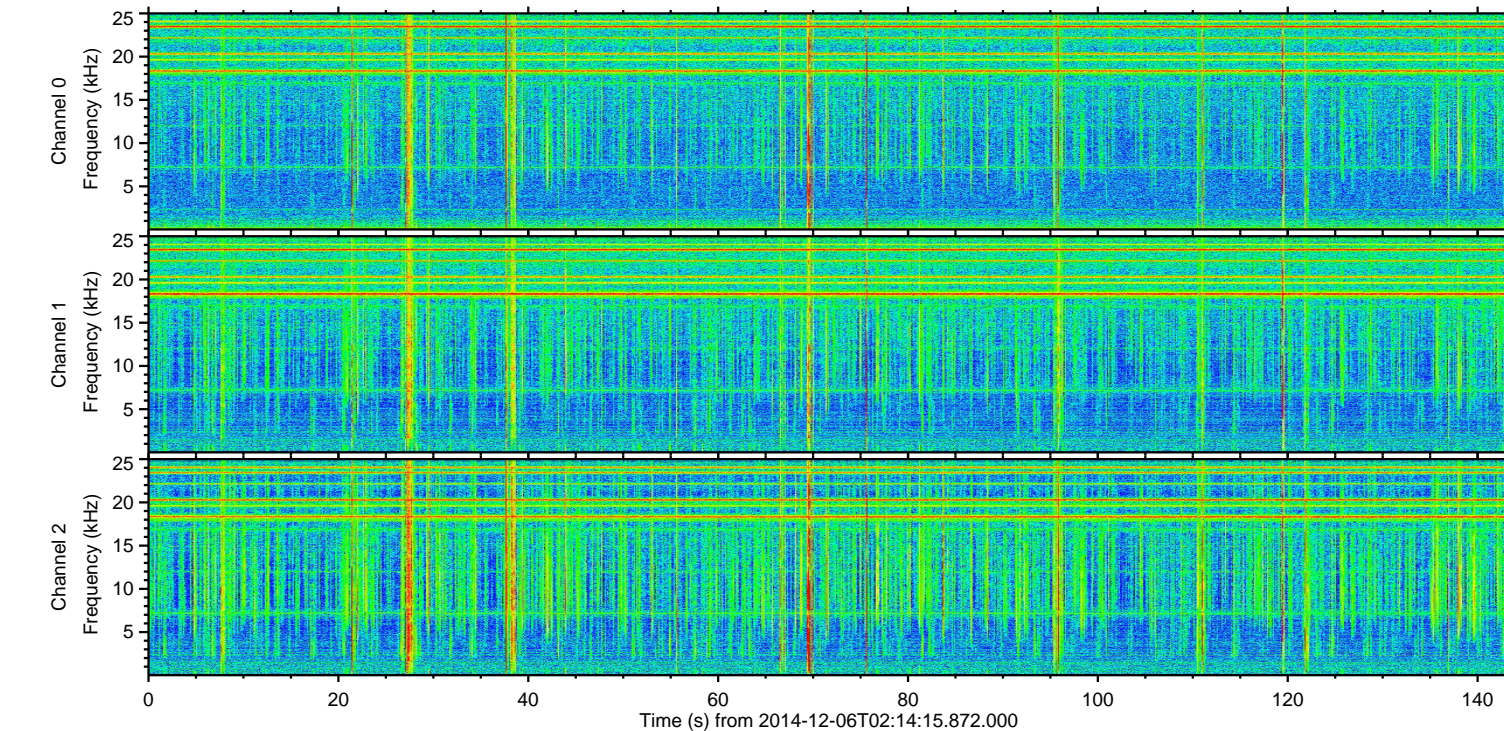
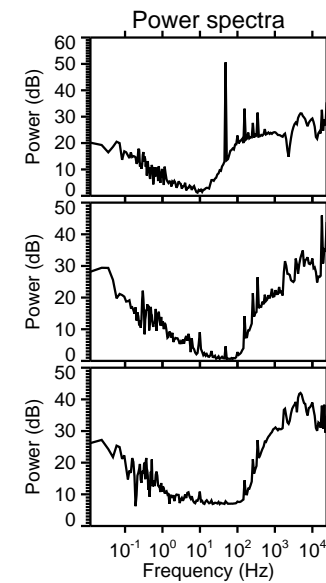
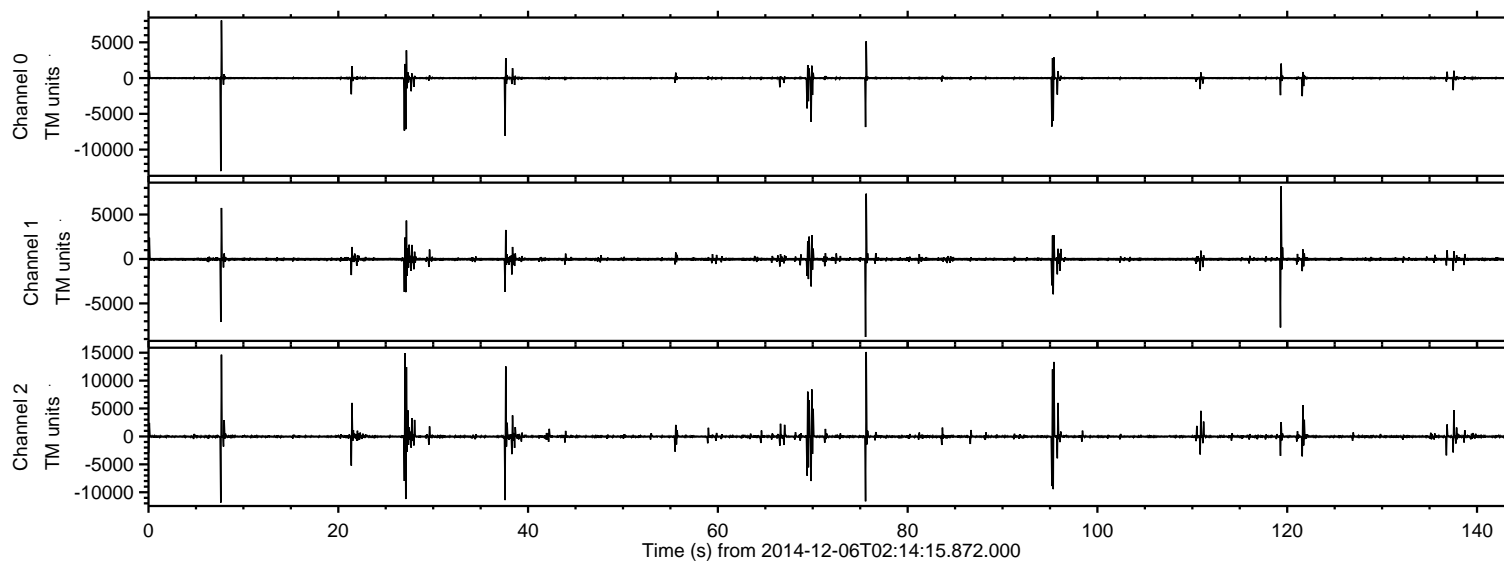
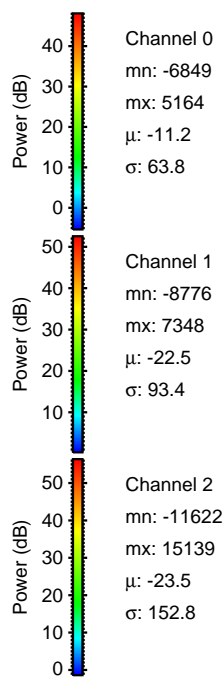
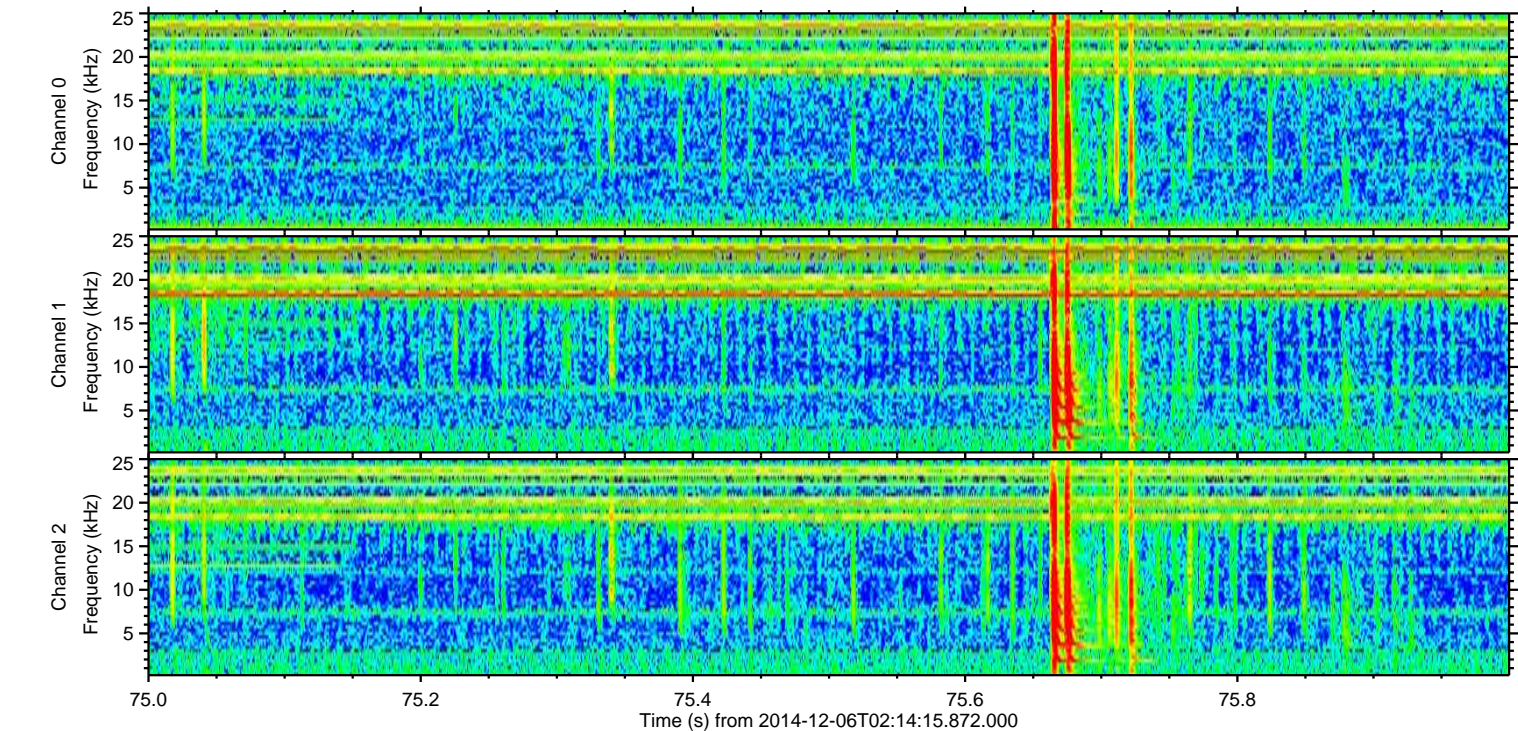
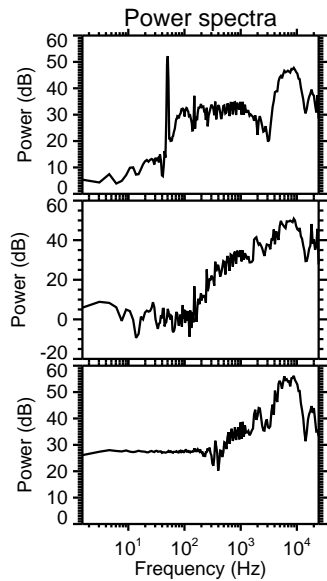
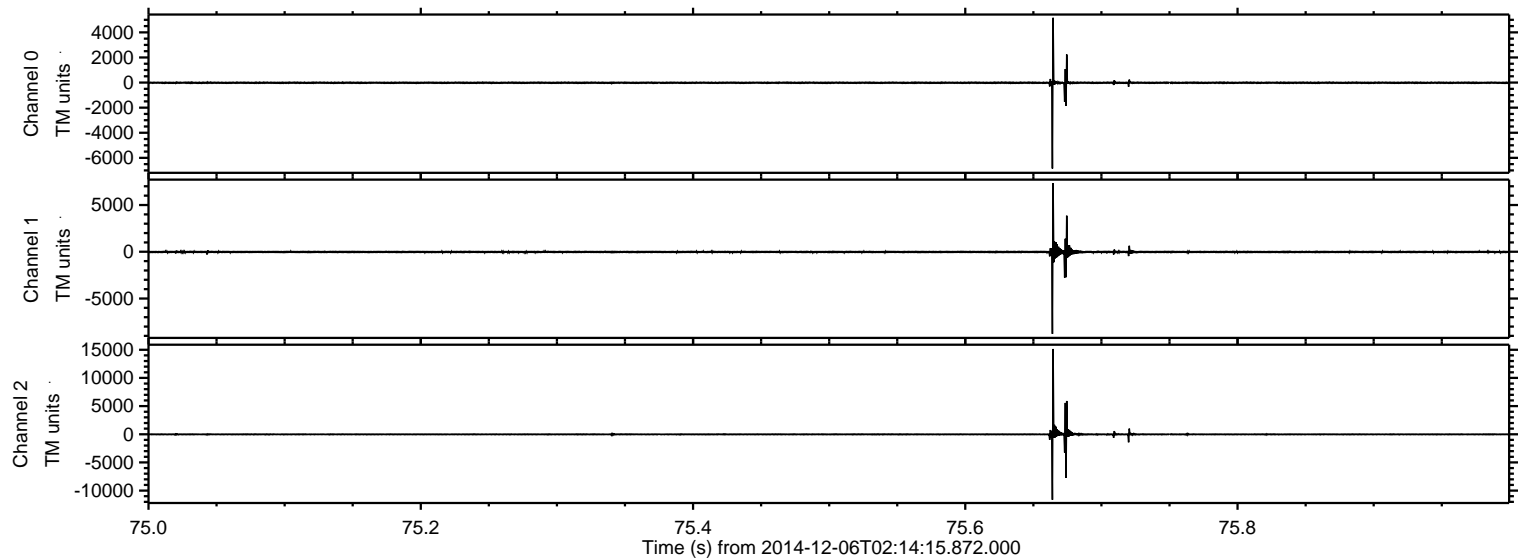


ELMAVAN 3D WAVEFORMS (Measured data sampled at 50 kHz) 49788 packets of 144 samples from 2014-12-06T02:14:15.872.000.

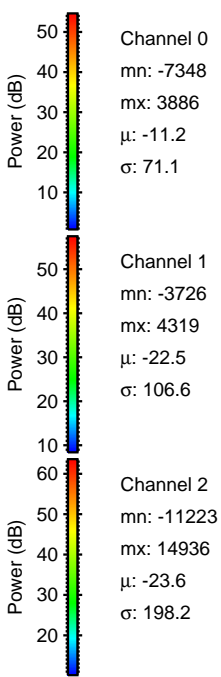
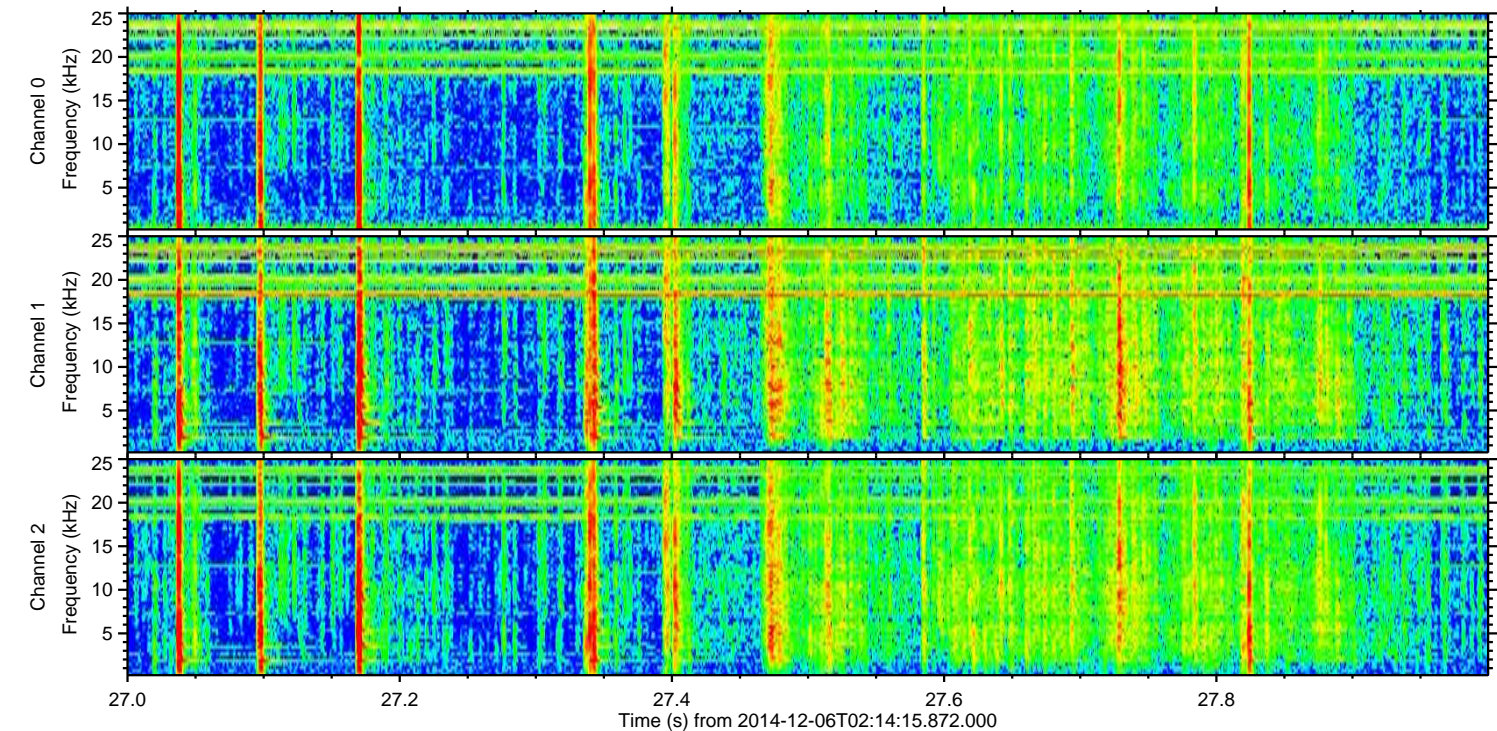
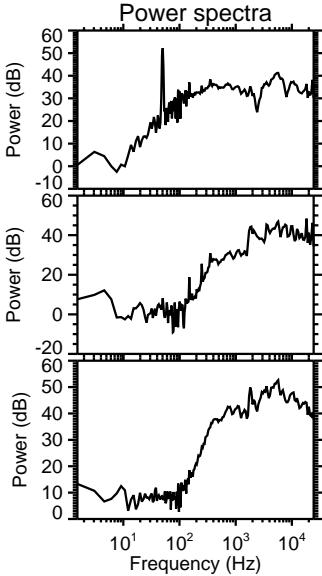
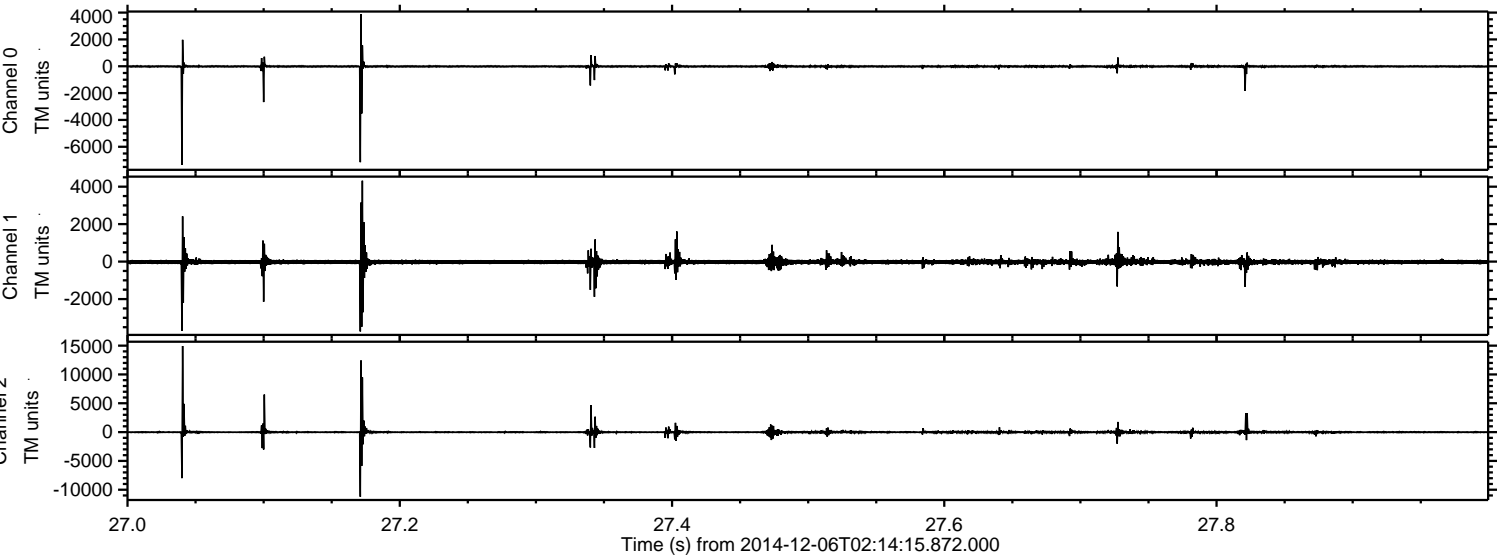
Processed Sat Dec 6 03:21:52 2014 by ELM ver.2012-10-06 from 001__elm20141206_021414__dat00.bin



Processed Sat Dec 6 03:22:03 2014 by ELM ver.2012-10-06 from 001__elm20141206_021414__dat00.bin

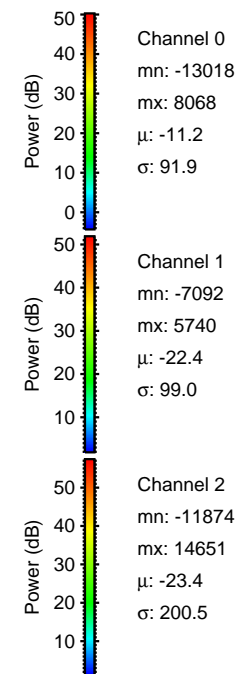
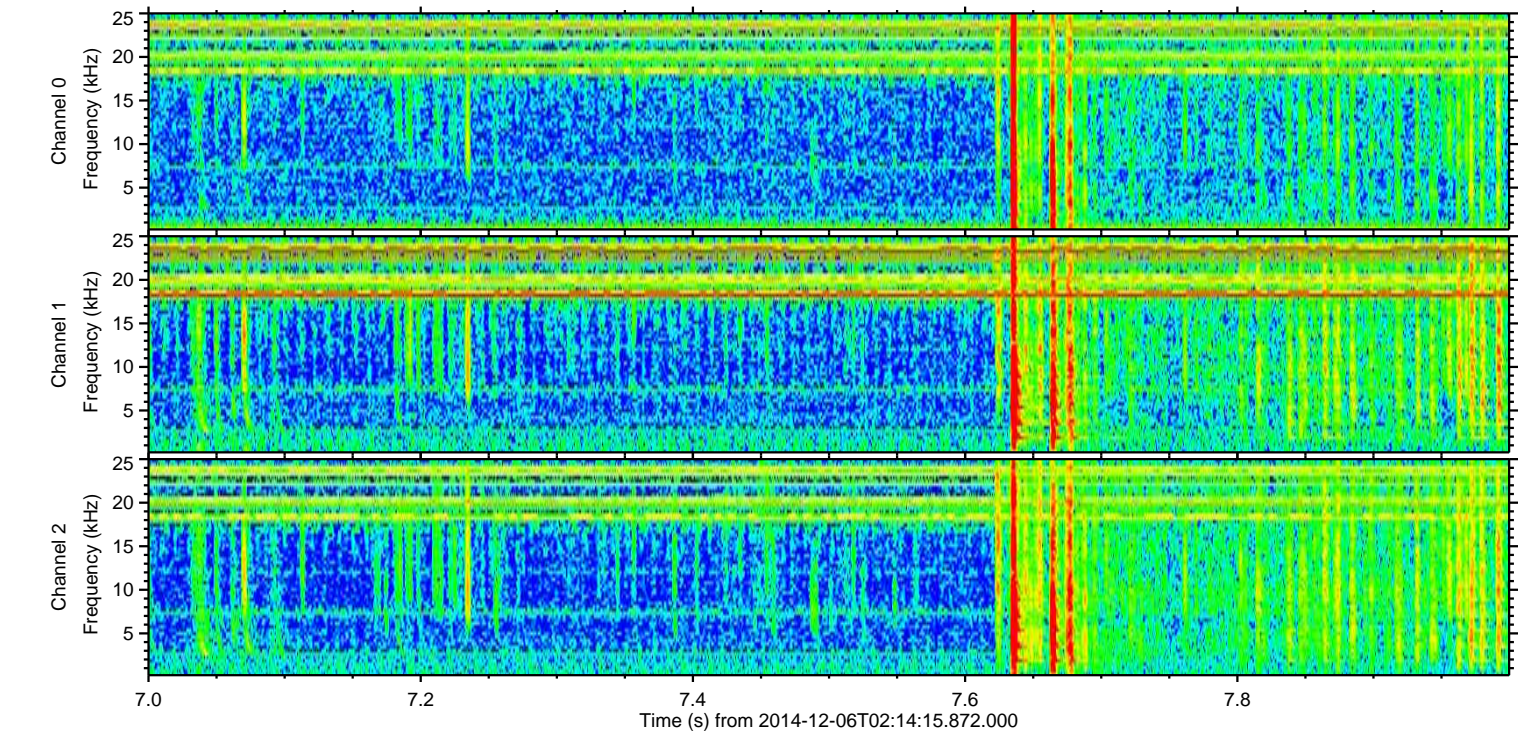
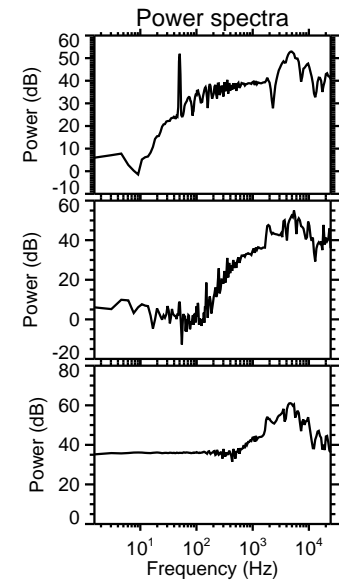
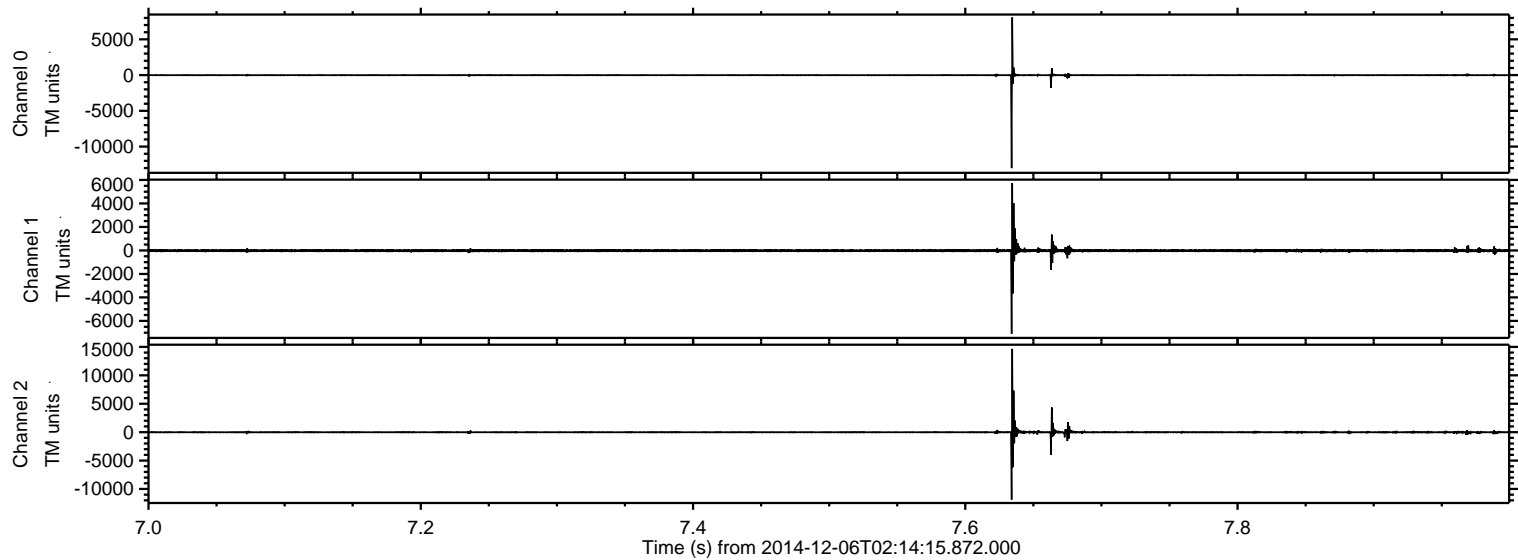


Processed Sat Dec 6 03:22:04 2014 by ELM ver.2012-10-06 from 001__elm20141206_021414__dat00.bin

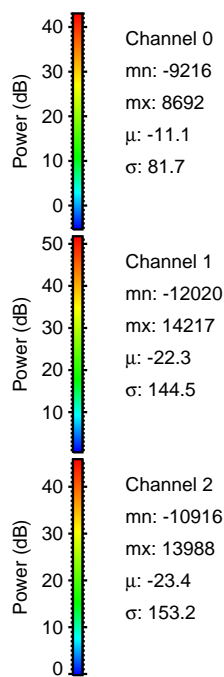
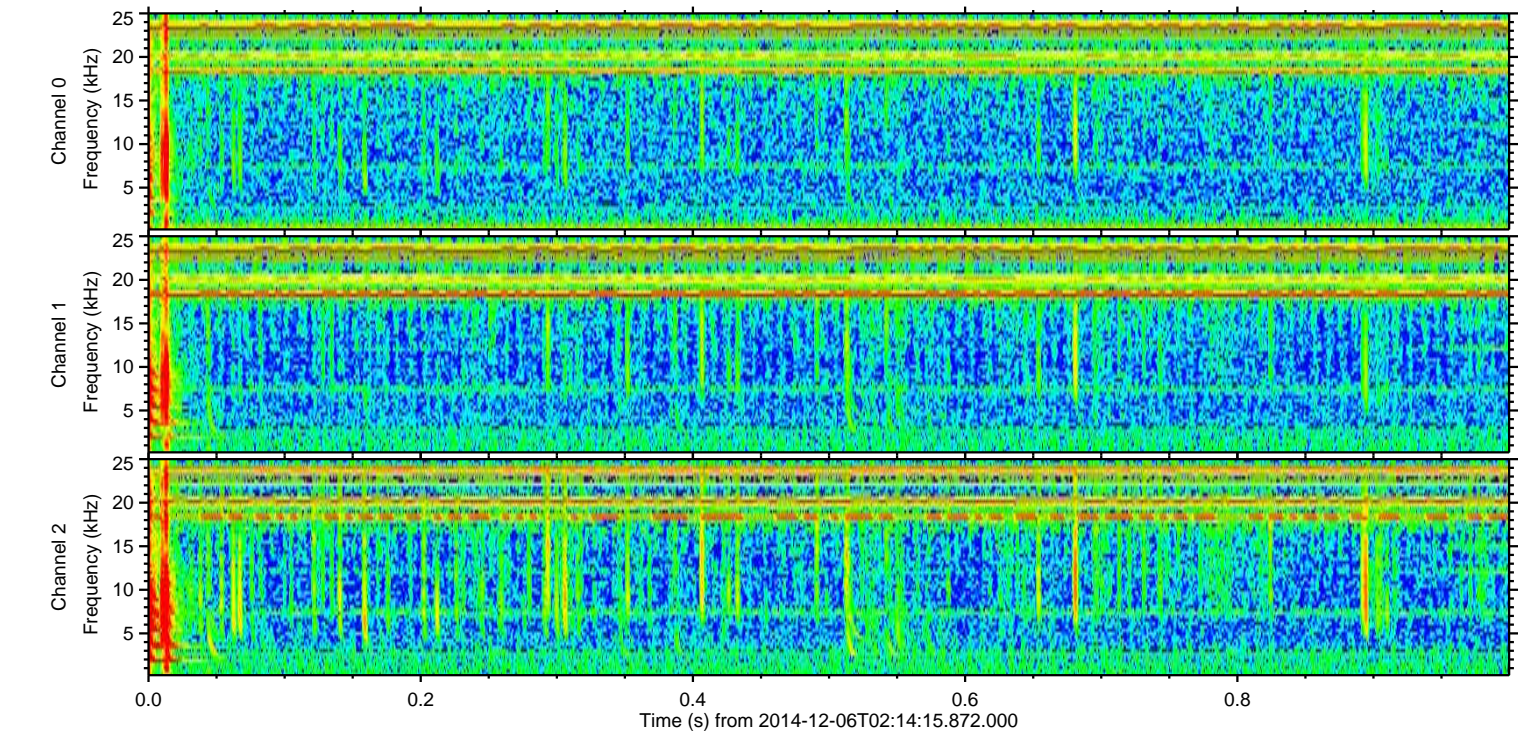
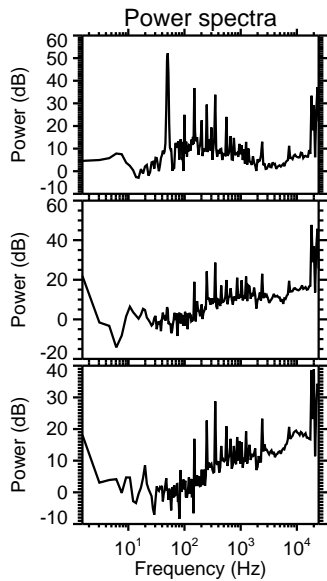
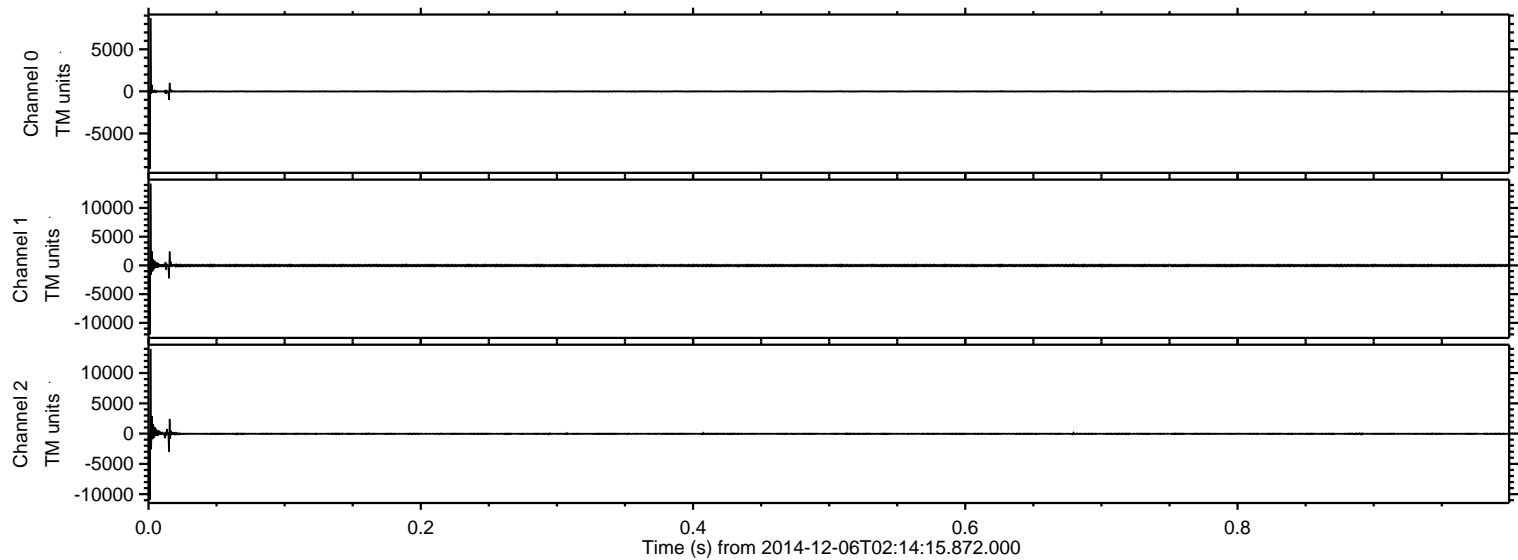


ELMAVAN 3D WAVEFORMS (Measured data sampled at 50 kHz) 49788 packets of 144 samples from 2014-12-06T02:14:15.872.000. Part 8/144

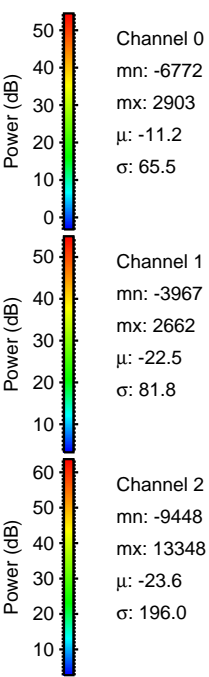
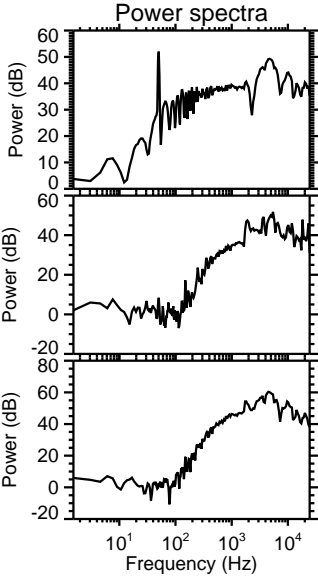
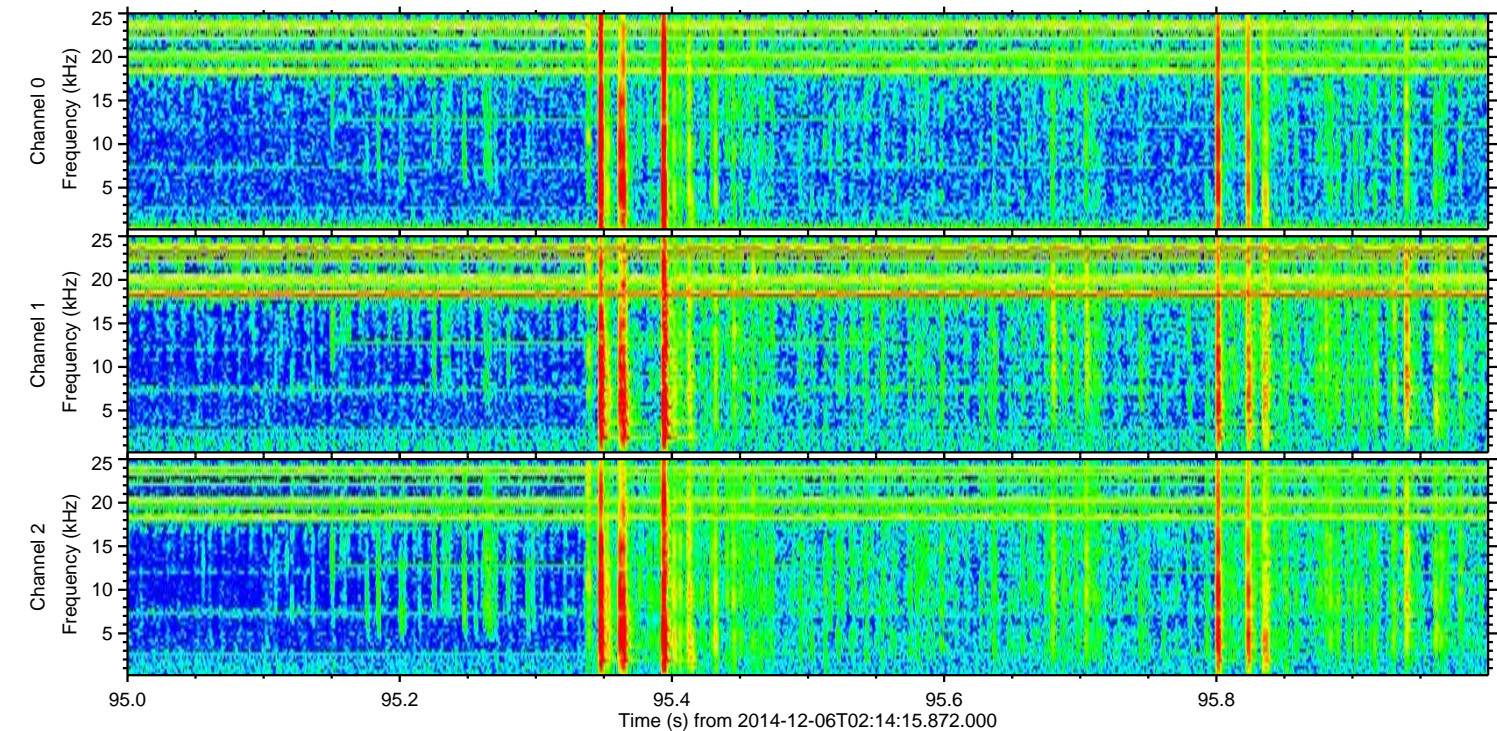
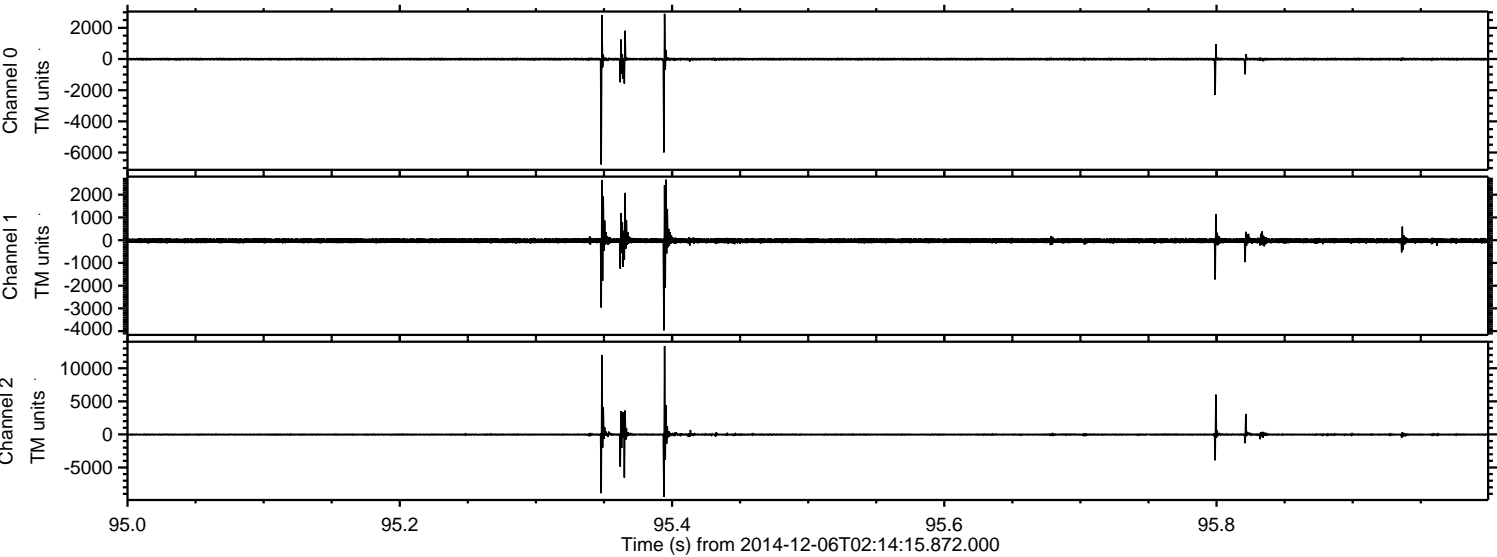
Processed Sat Dec 6 03:22:05 2014 by ELM ver.2012-10-06 from 001__elm20141206_021414__dat00.bin



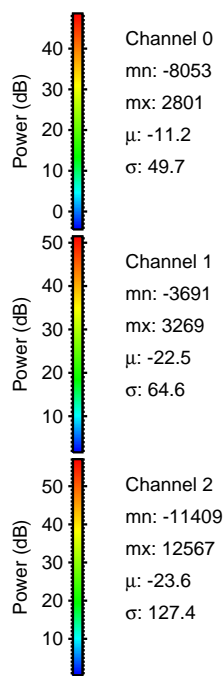
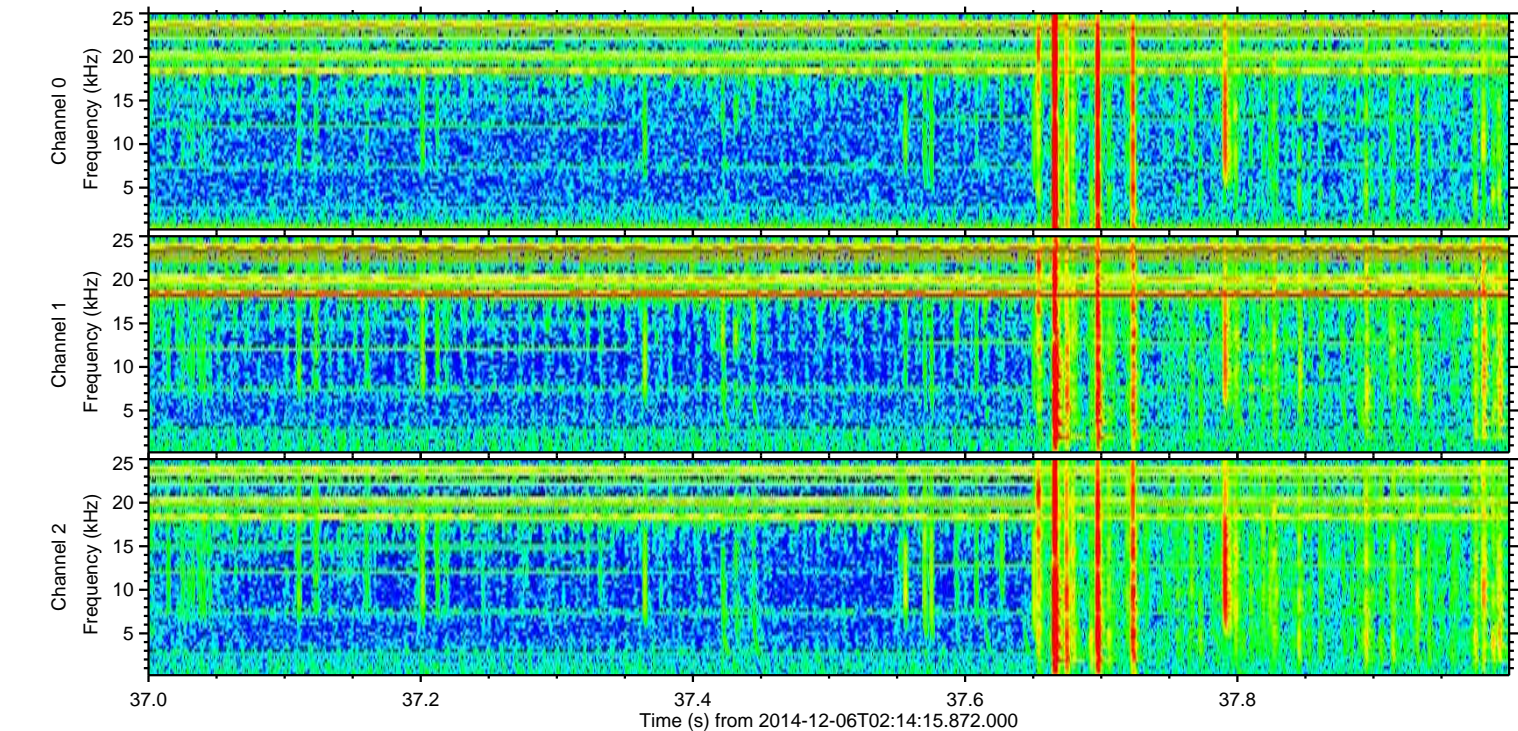
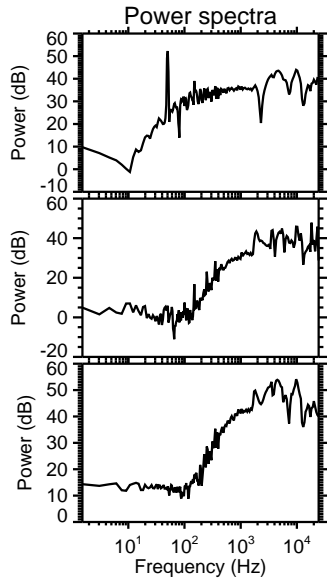
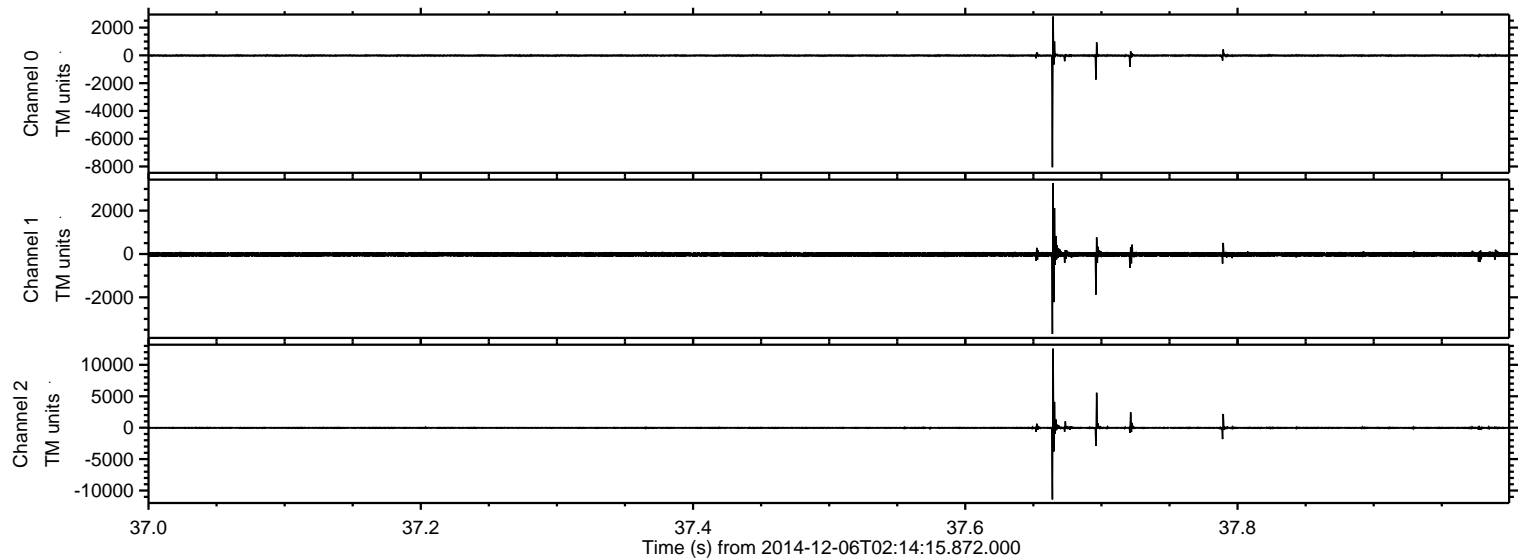
Processed Sat Dec 6 03:22:06 2014 by ELM ver.2012-10-06 from 001__elm20141206_021414__dat00.bin



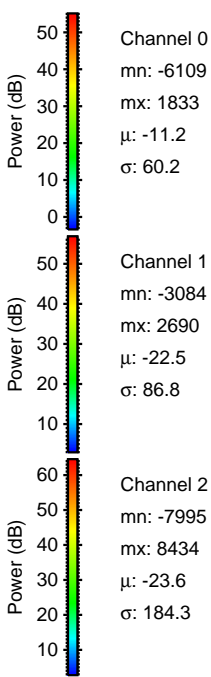
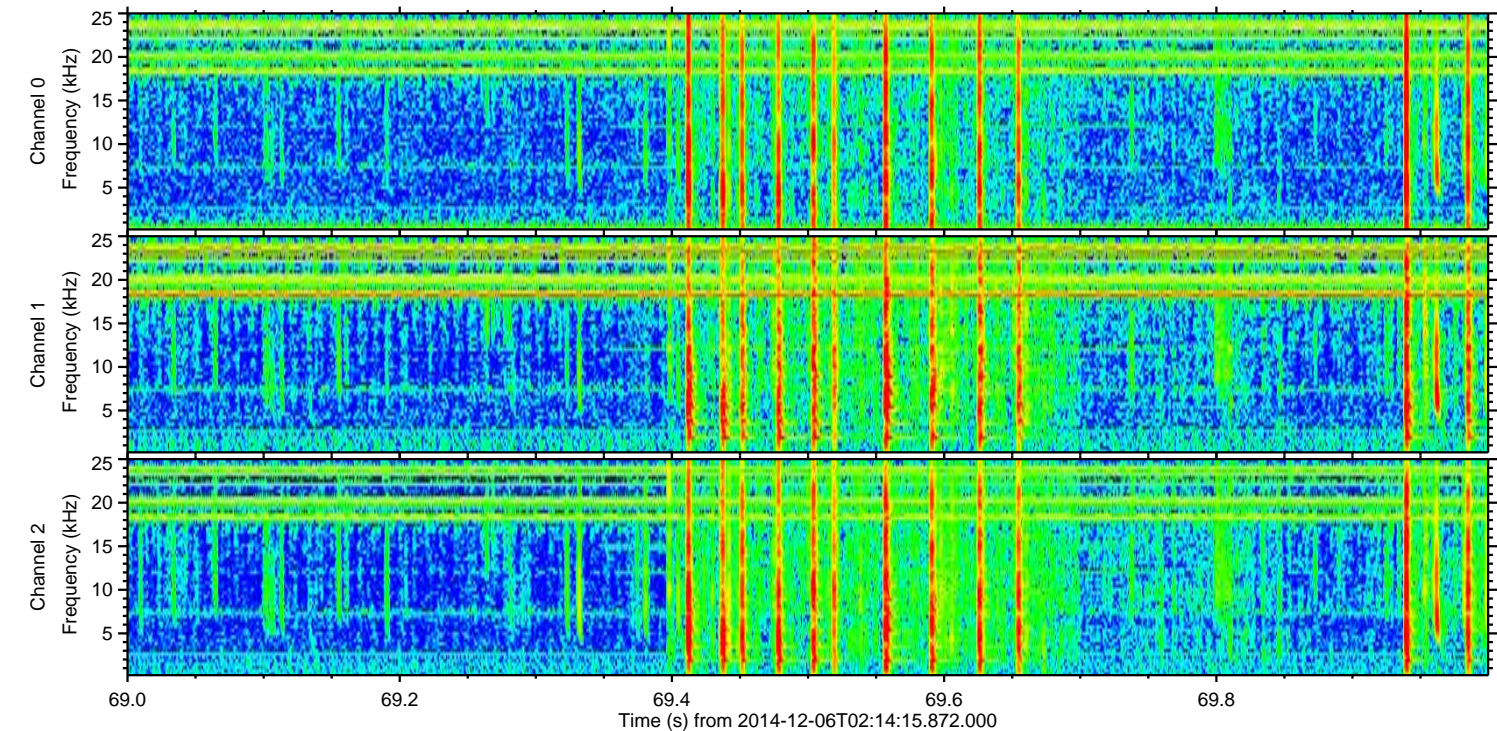
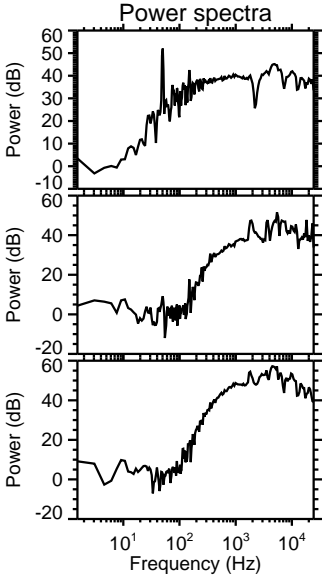
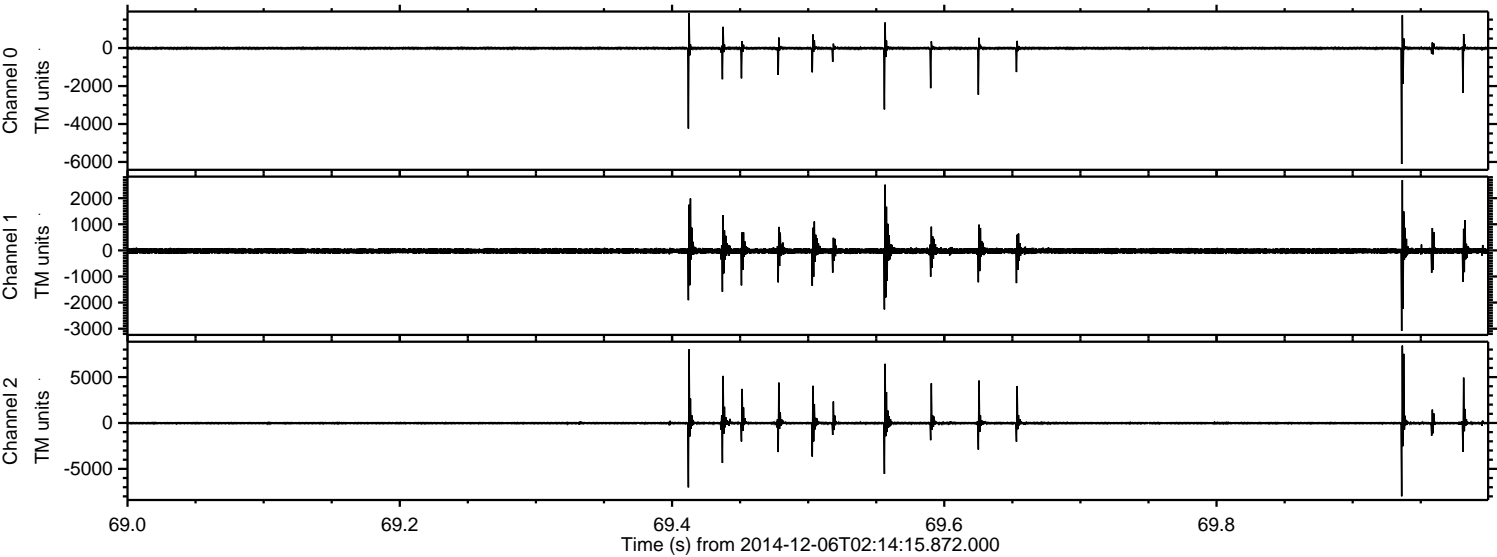
Processed Sat Dec 6 03:22:07 2014 by ELM ver.2012-10-06 from 001__elm20141206_021414__dat00.bin



Processed Sat Dec 6 03:22:08 2014 by ELM ver.2012-10-06 from 001__elm20141206_021414__dat00.bin

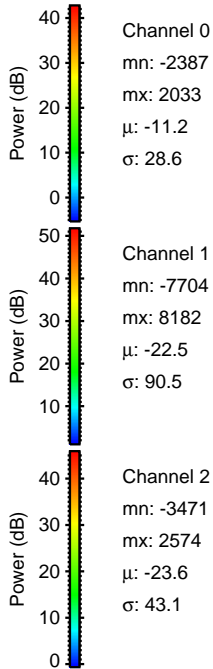
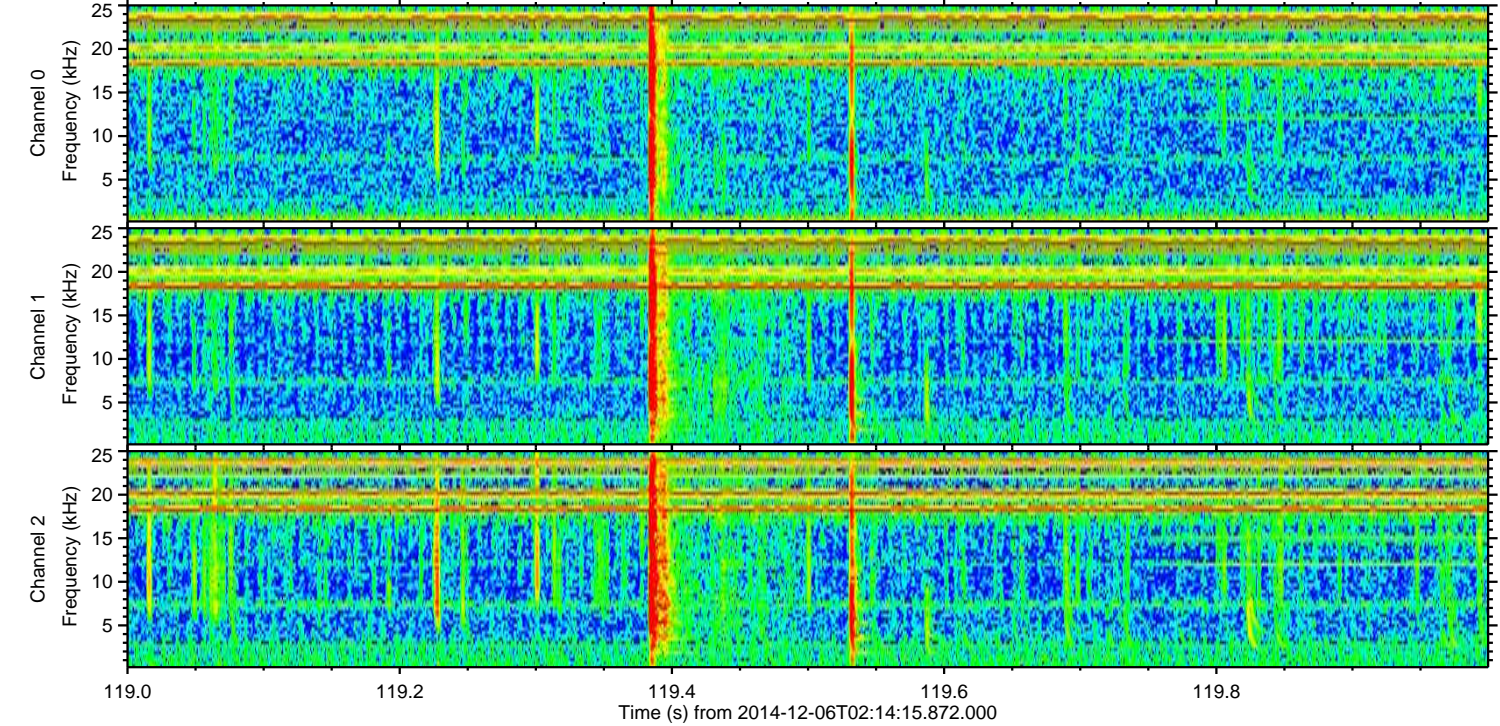
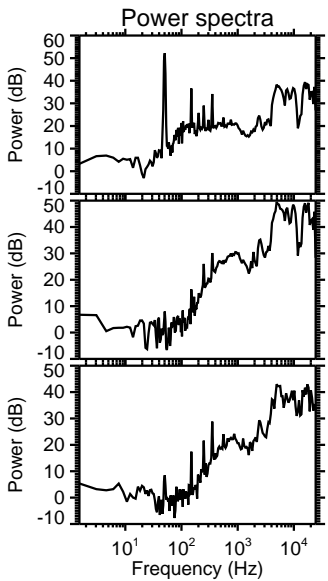
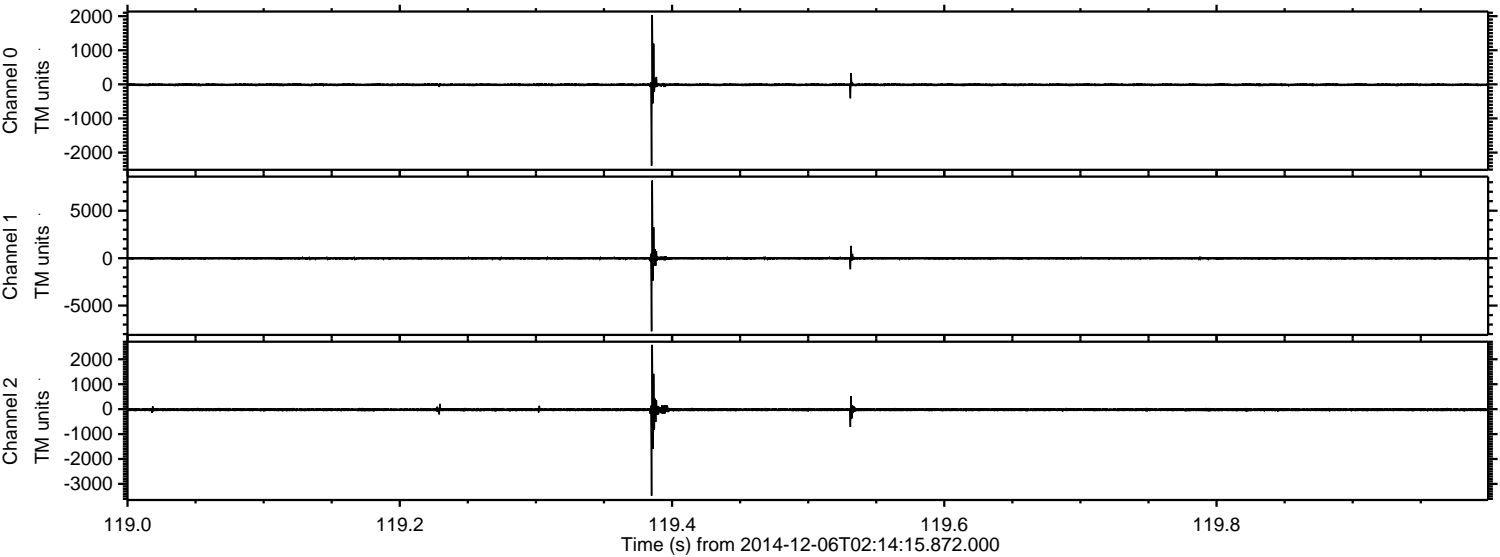


Processed Sat Dec 6 03:22:09 2014 by ELM ver.2012-10-06 from 001__elm20141206_021414__dat00.bin

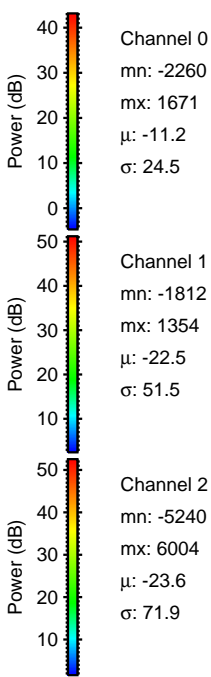
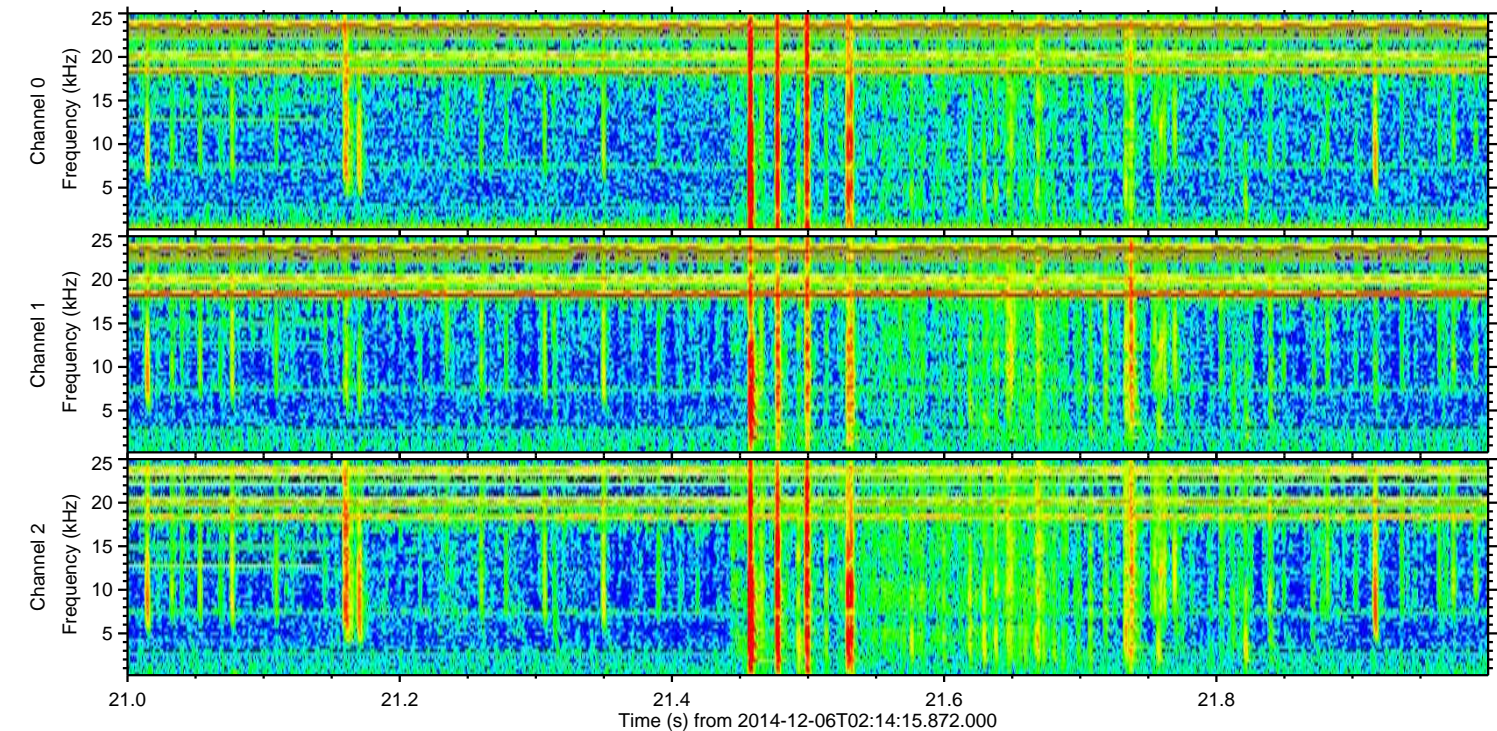
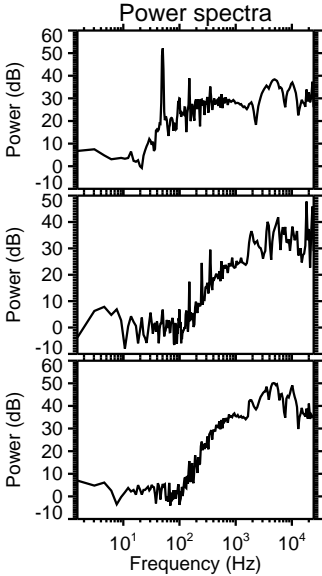
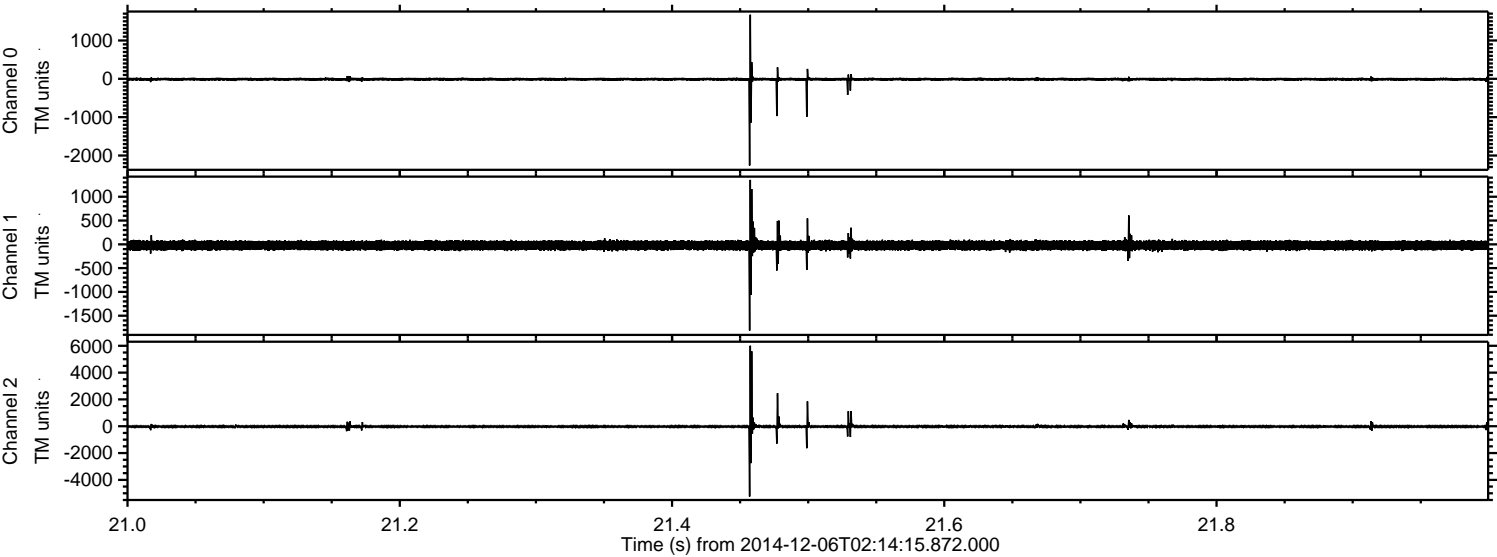


ELMAVAN 3D WAVEFORMS (Measured data sampled at 50 kHz) 49788 packets of 144 samples from 2014-12-06T02:14:15.872.000. Part 120/144

Processed Sat Dec 6 03:22:10 2014 by ELM ver.2012-10-06 from 001__elm20141206_021414__dat00.bin



Processed Sat Dec 6 03:22:11 2014 by ELM ver.2012-10-06 from 001__elm20141206_021414__dat00.bin



Channel 0
mn: -2260
mx: 1671
 μ : -11.2
 σ : 24.5

Channel 1
mn: -1812
mx: 1354
 μ : -22.5
 σ : 51.5

Channel 2
mn: -5240
mx: 6004
 μ : -23.6
 σ : 71.9

Processed Sat Dec 6 03:22:12 2014 by ELM ver.2012-10-06 from 001__elm20141206_021414__dat00.bin

