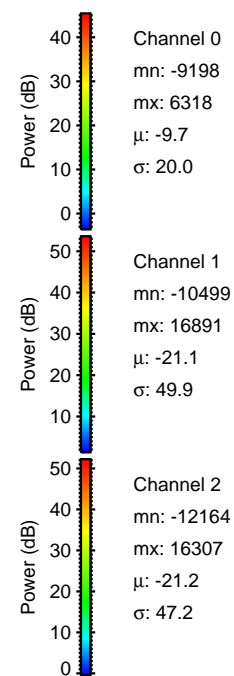
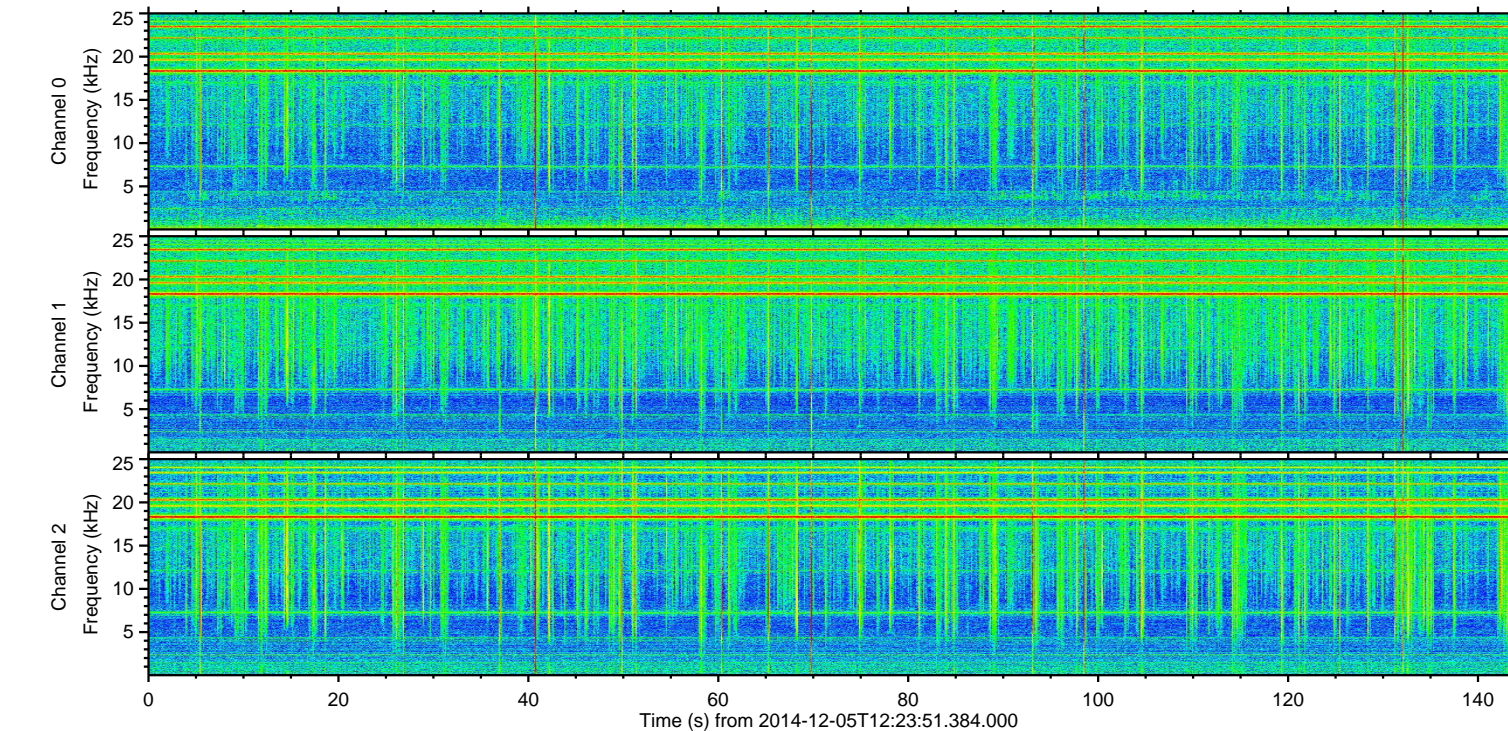
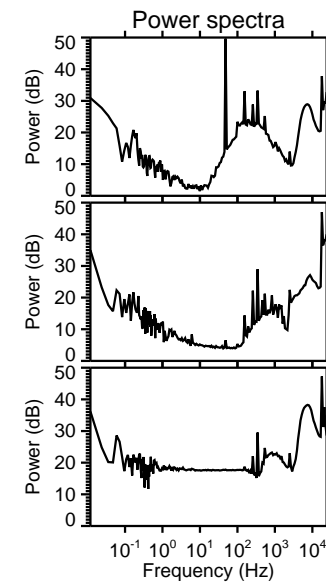
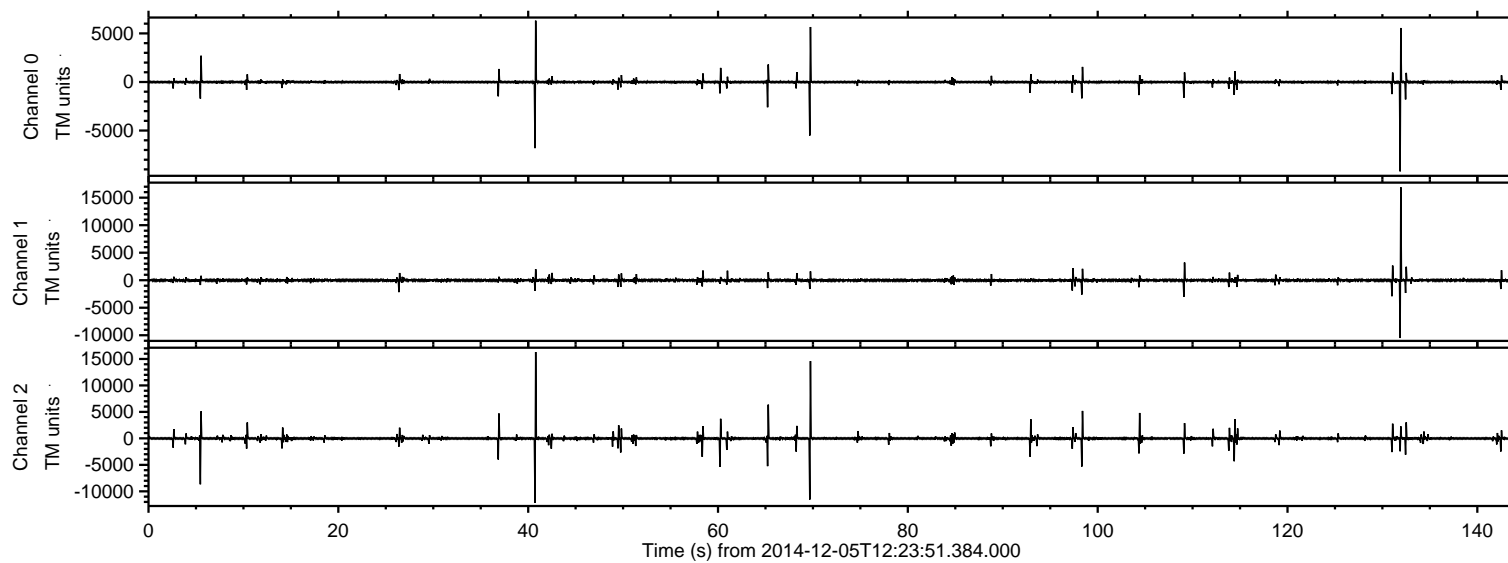


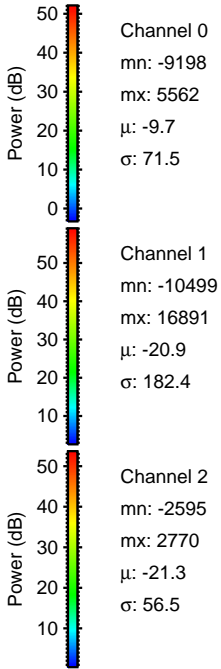
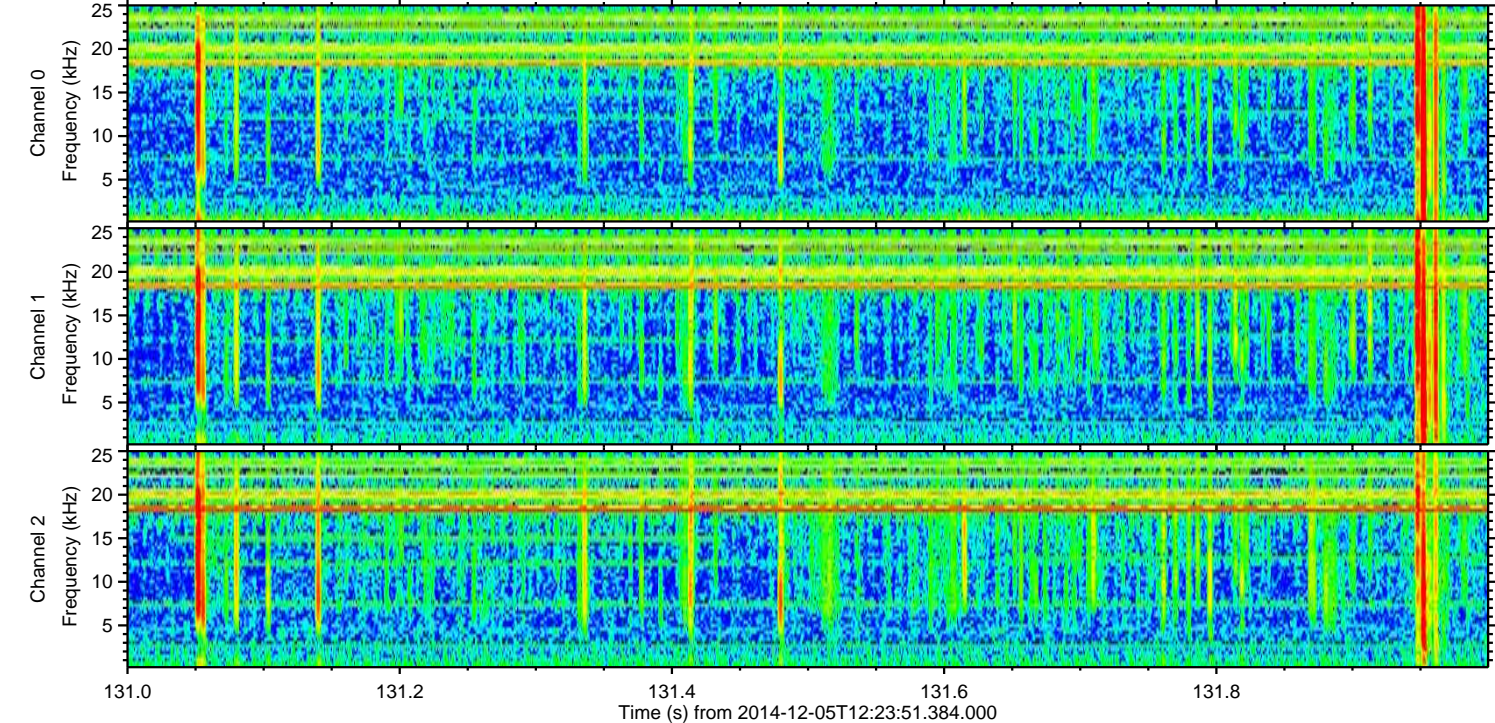
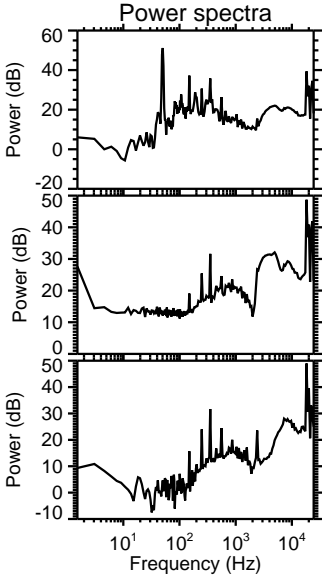
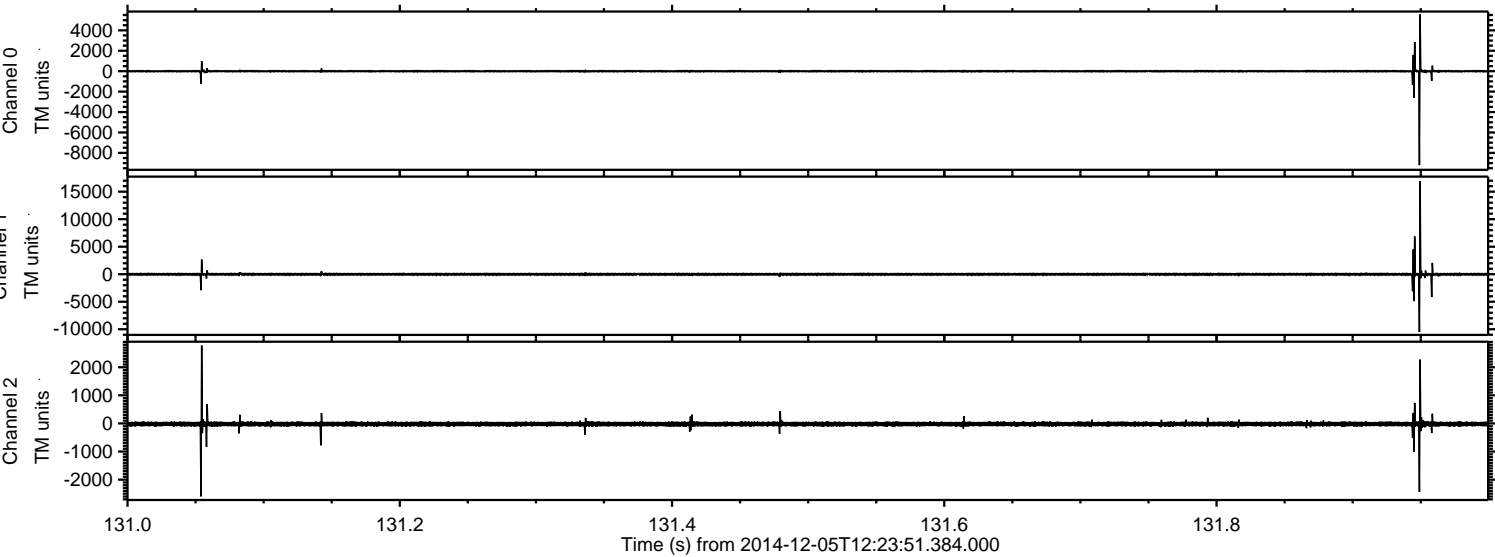
ELMAVAN 3D WAVEFORMS (Measured data sampled at 50 kHz) 49775 packets of 144 samples from 2014-12-05T12:23:51.384.000.

Processed Fri Dec 5 14:18:31 2014 by ELM ver.2012-10-06 from 001__elm20141205_122350__dat00.bin

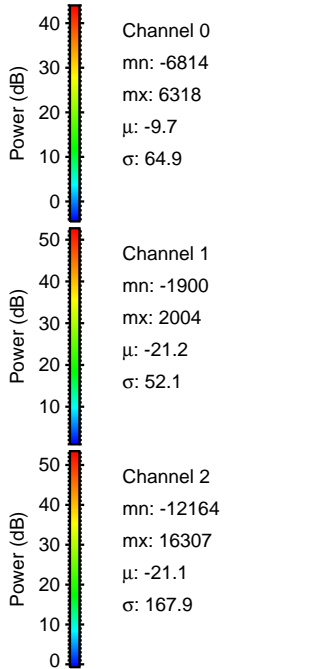
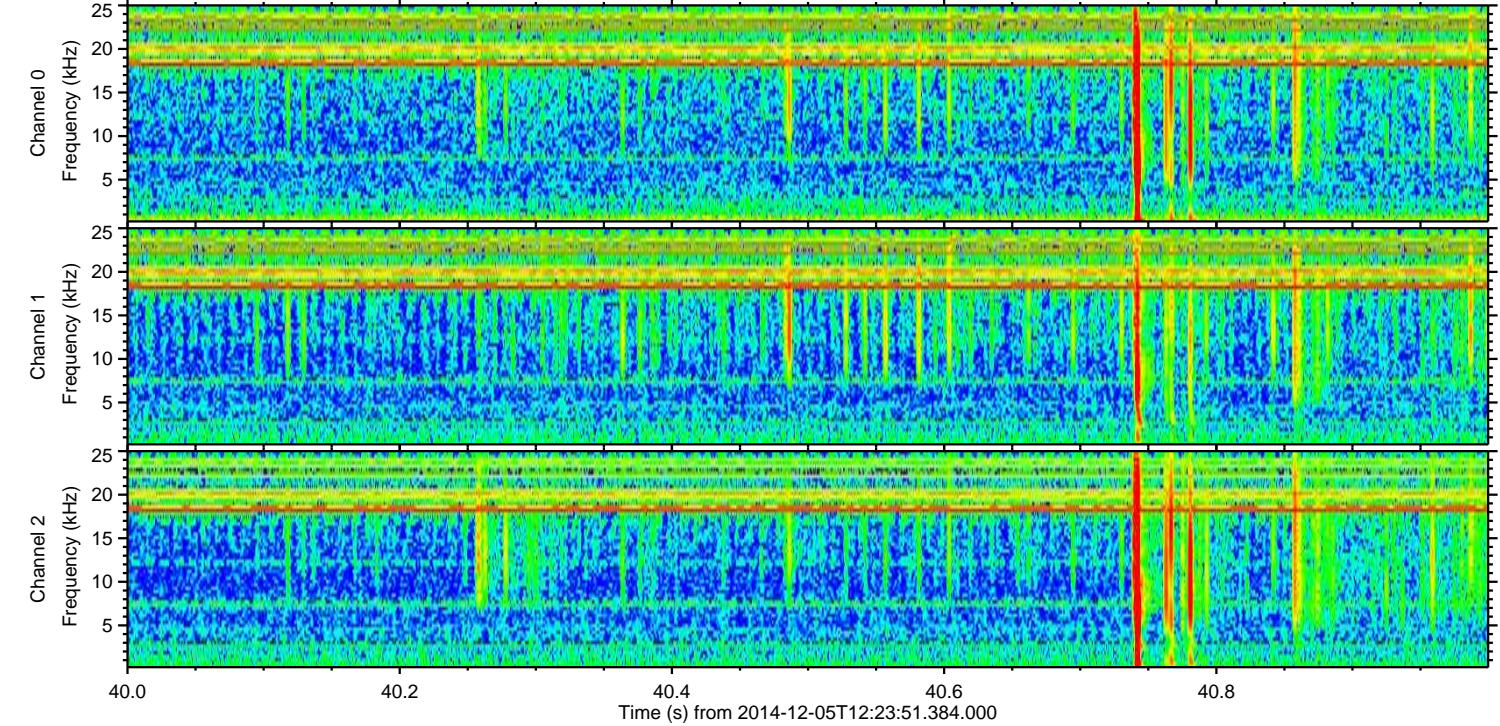
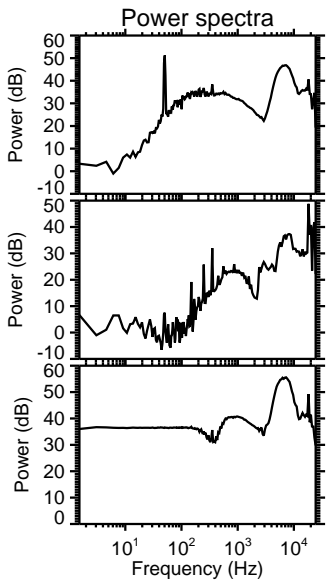
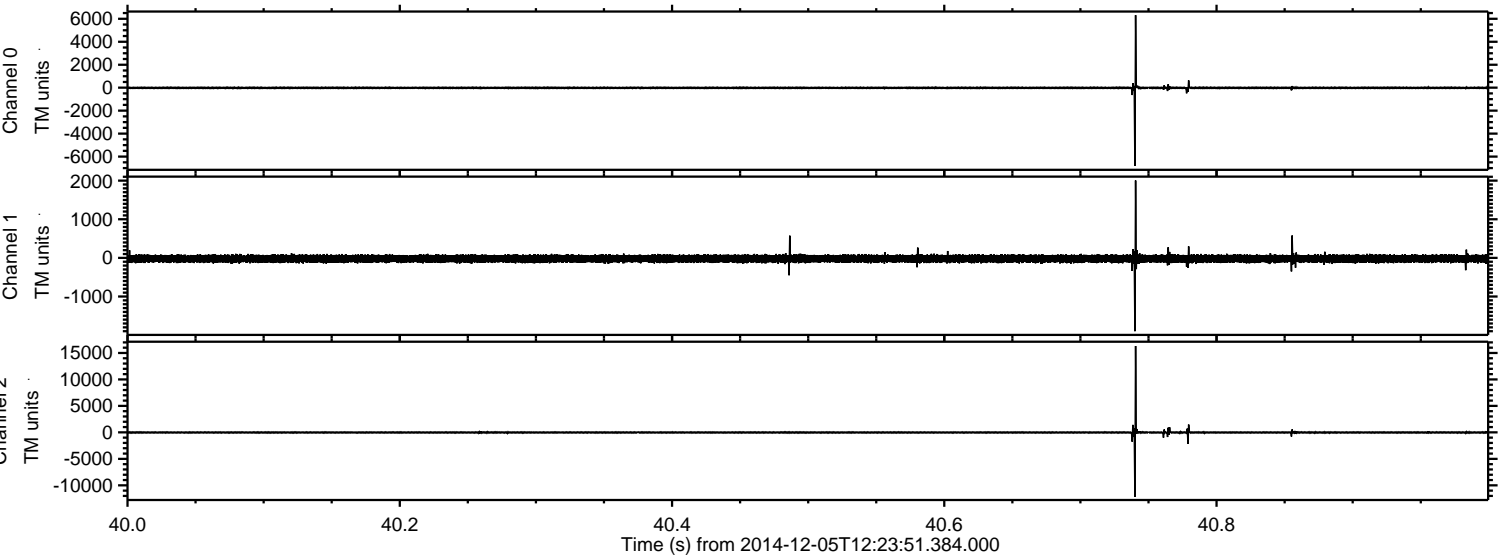


ELMAVAN 3D WAVEFORMS (Measured data sampled at 50 kHz) 49775 packets of 144 samples from 2014-12-05T12:23:51.384.000. Part 132/144

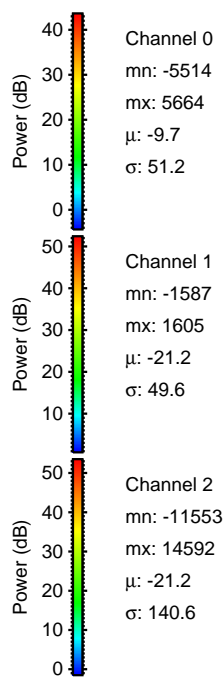
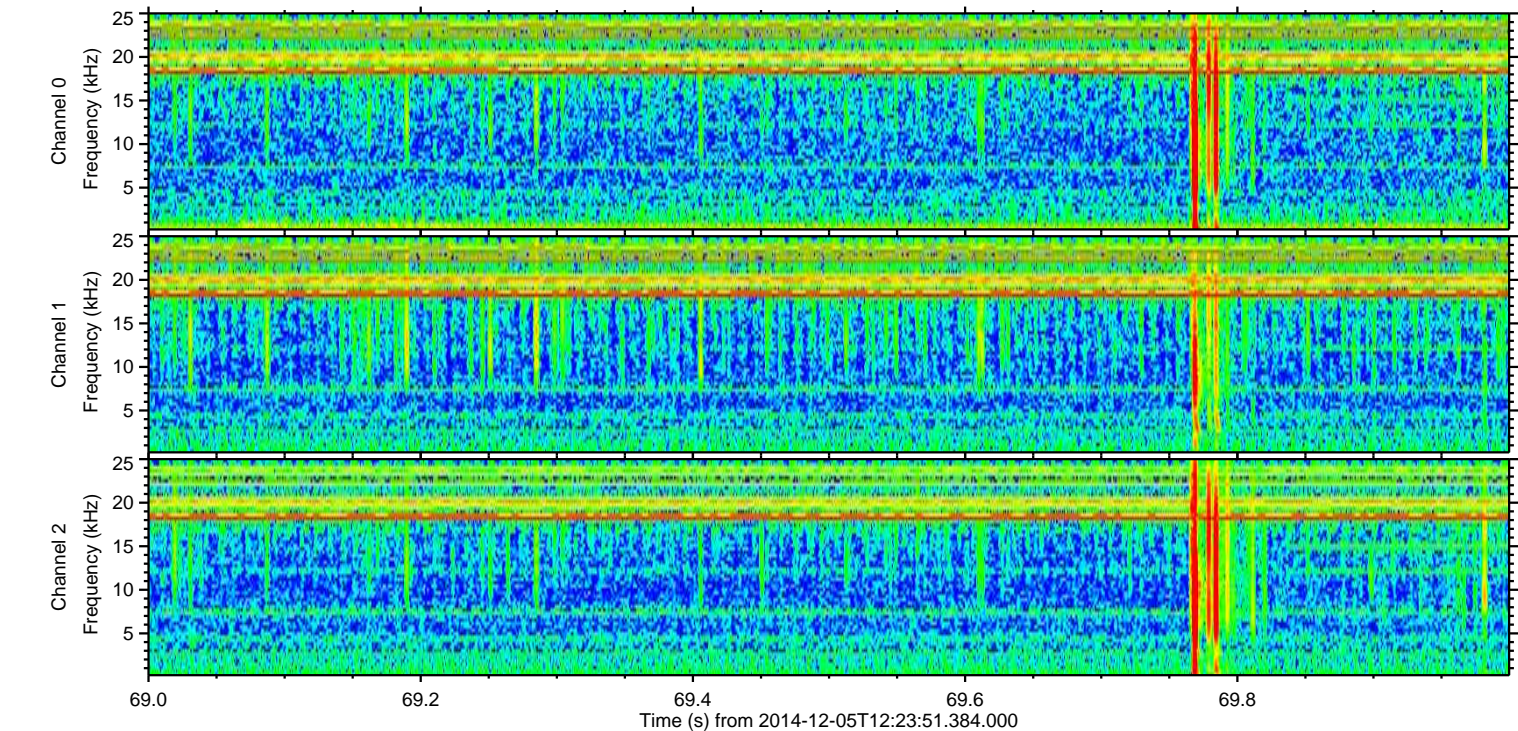
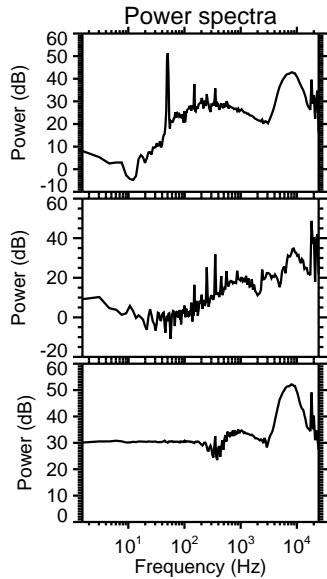
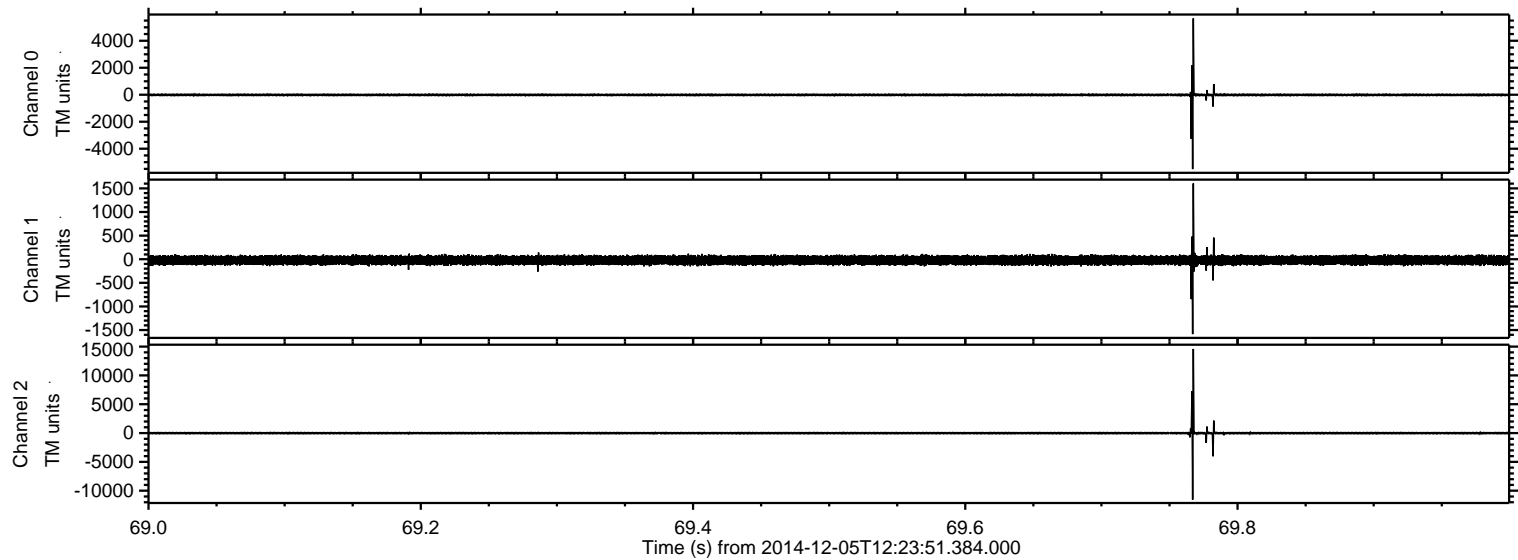
Processed Fri Dec 5 14:18:42 2014 by ELM ver.2012-10-06 from 001__elm20141205_122350__dat00.bin



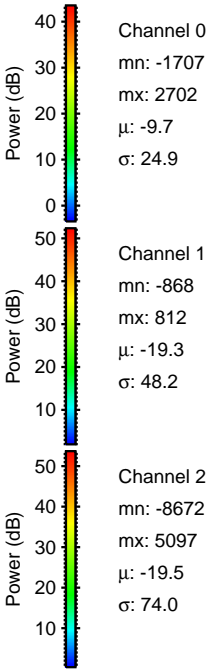
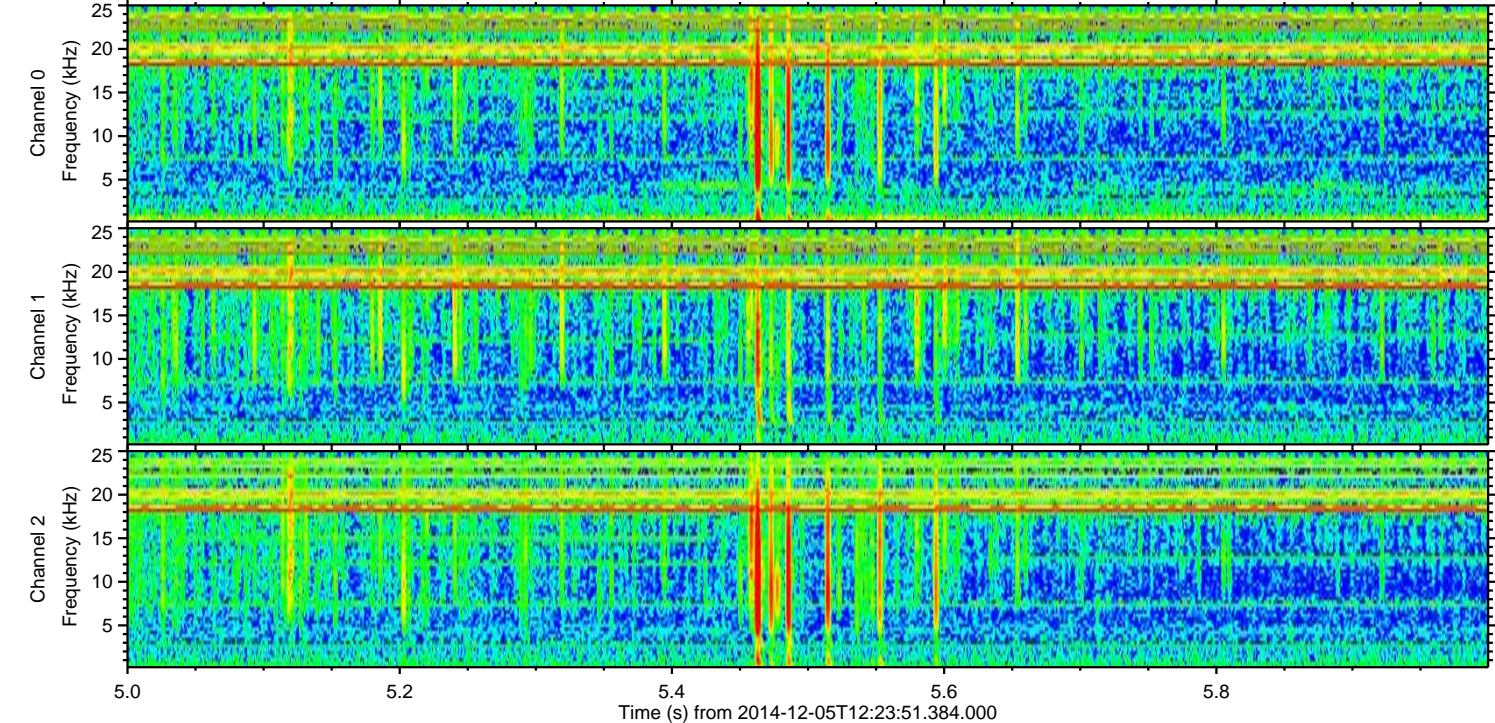
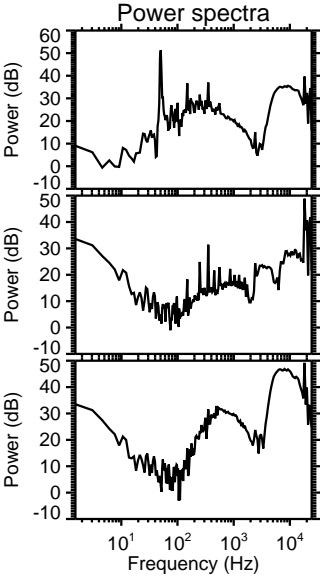
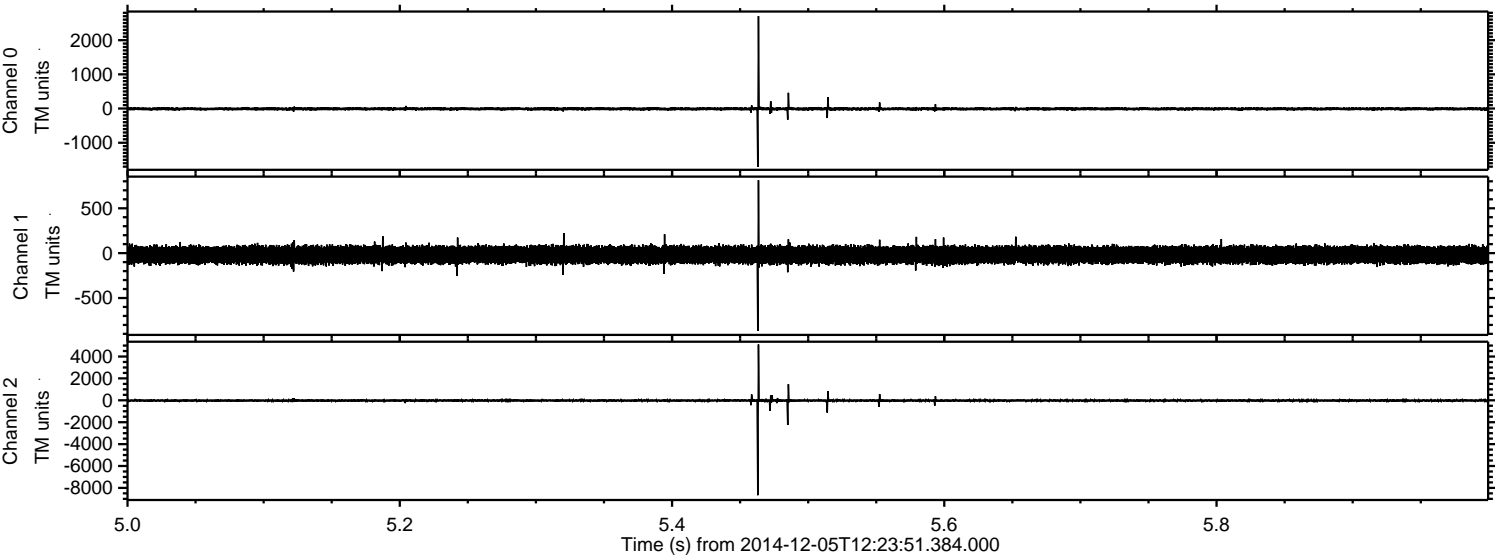
Processed Fri Dec 5 14:18:43 2014 by ELM ver.2012-10-06 from 001__elm20141205_122350__dat00.bin



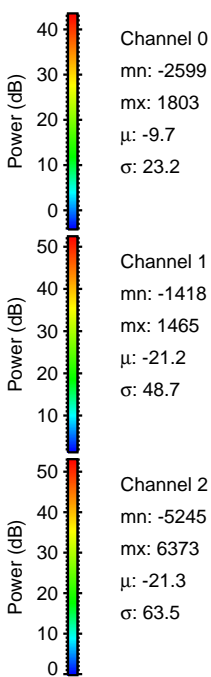
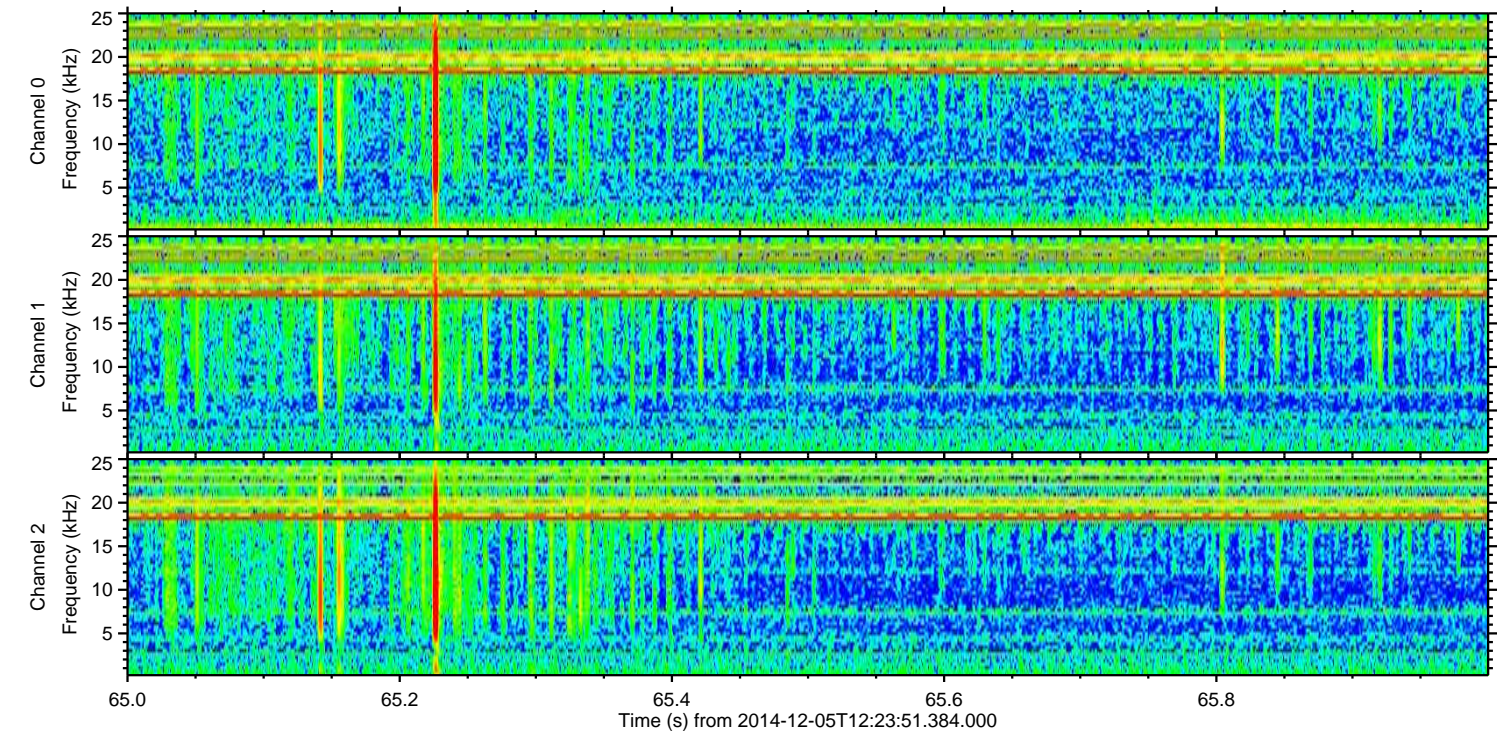
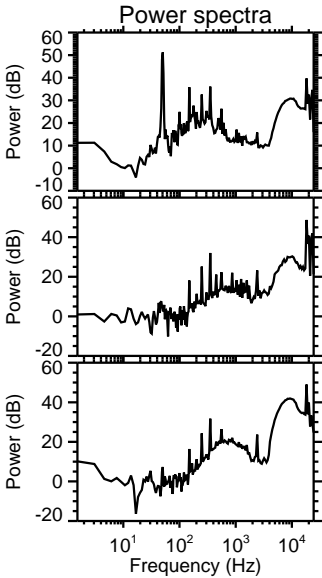
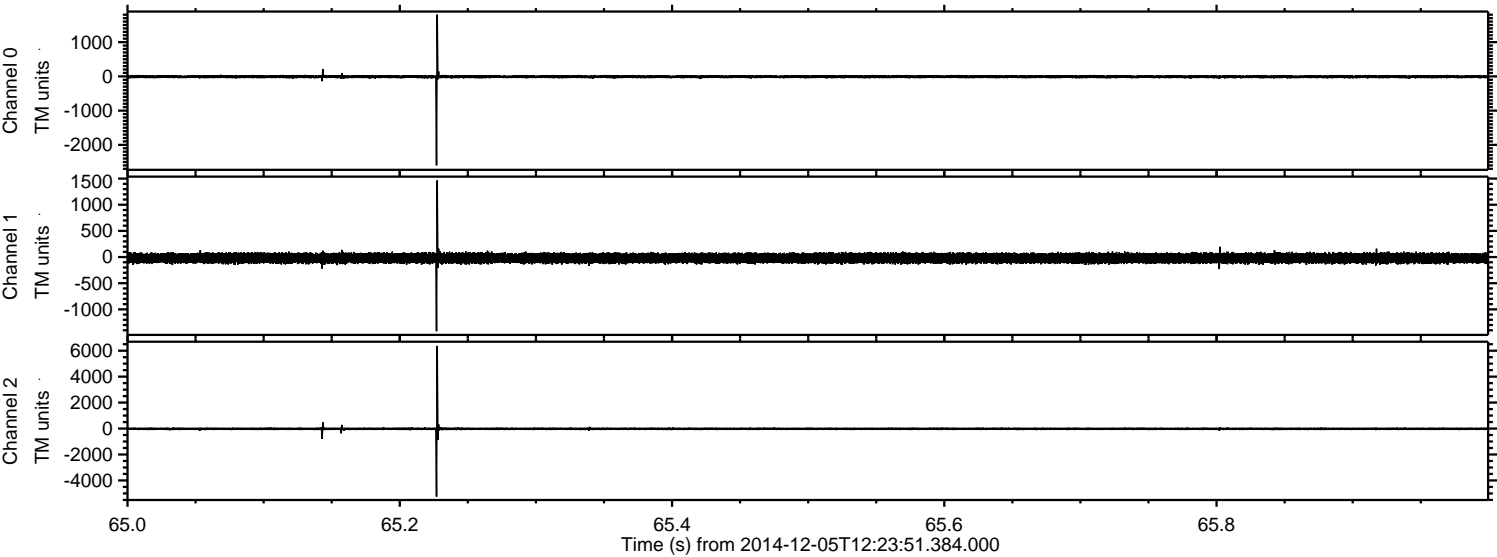
Processed Fri Dec 5 14:18:44 2014 by ELM ver.2012-10-06 from 001__elm20141205_122350__dat00.bin



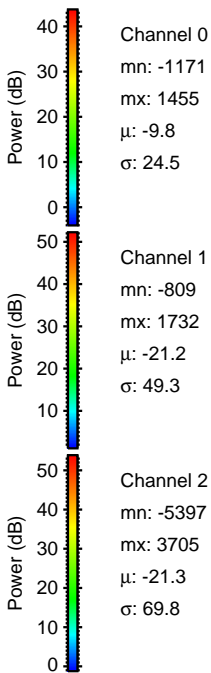
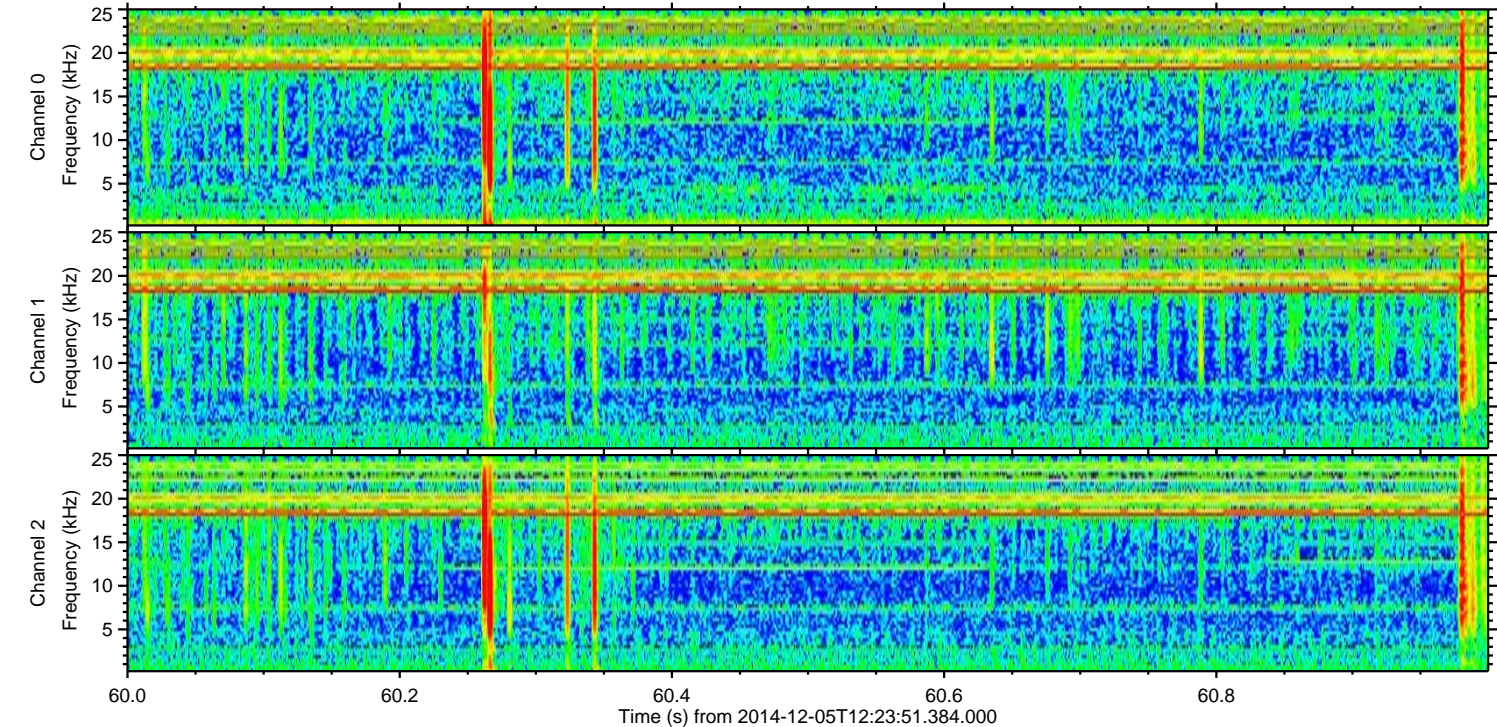
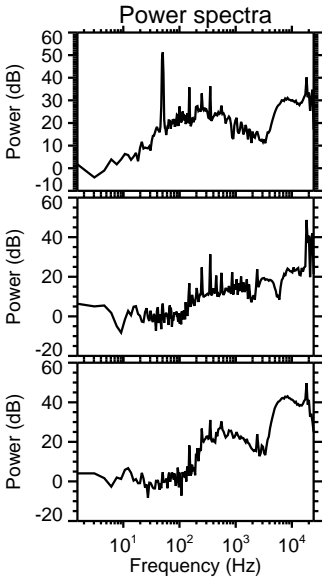
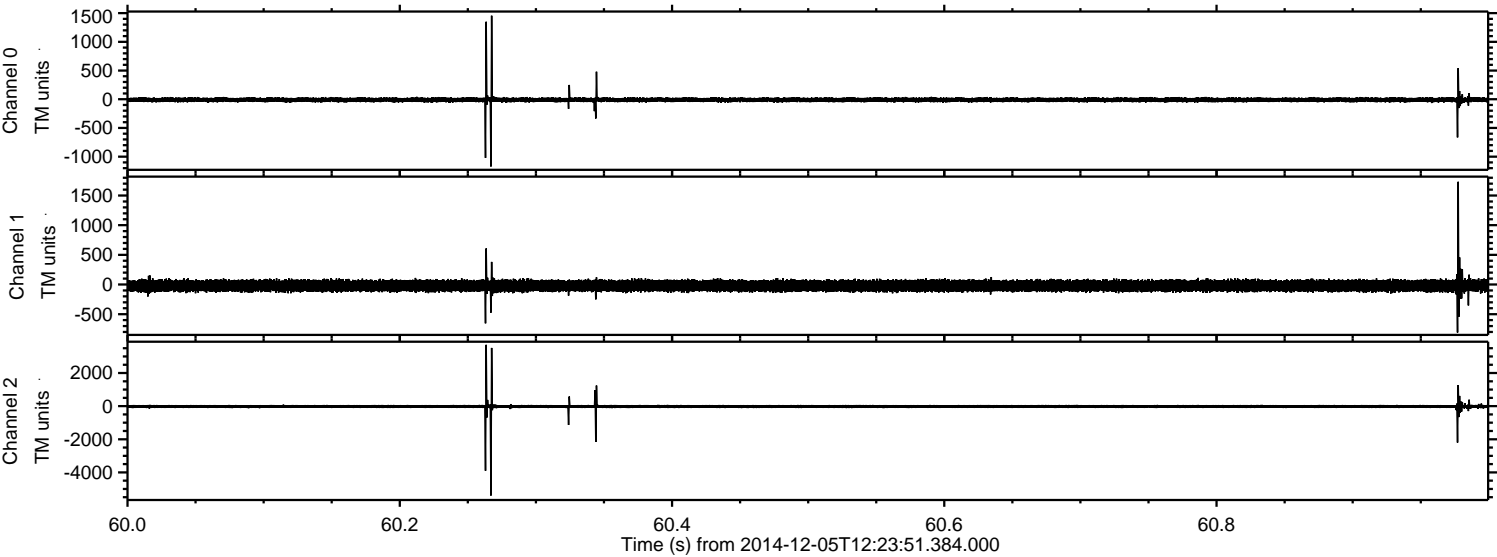
Processed Fri Dec 5 14:18:45 2014 by ELM ver.2012-10-06 from 001__elm20141205_122350__dat00.bin



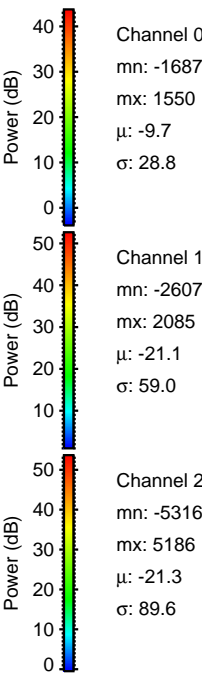
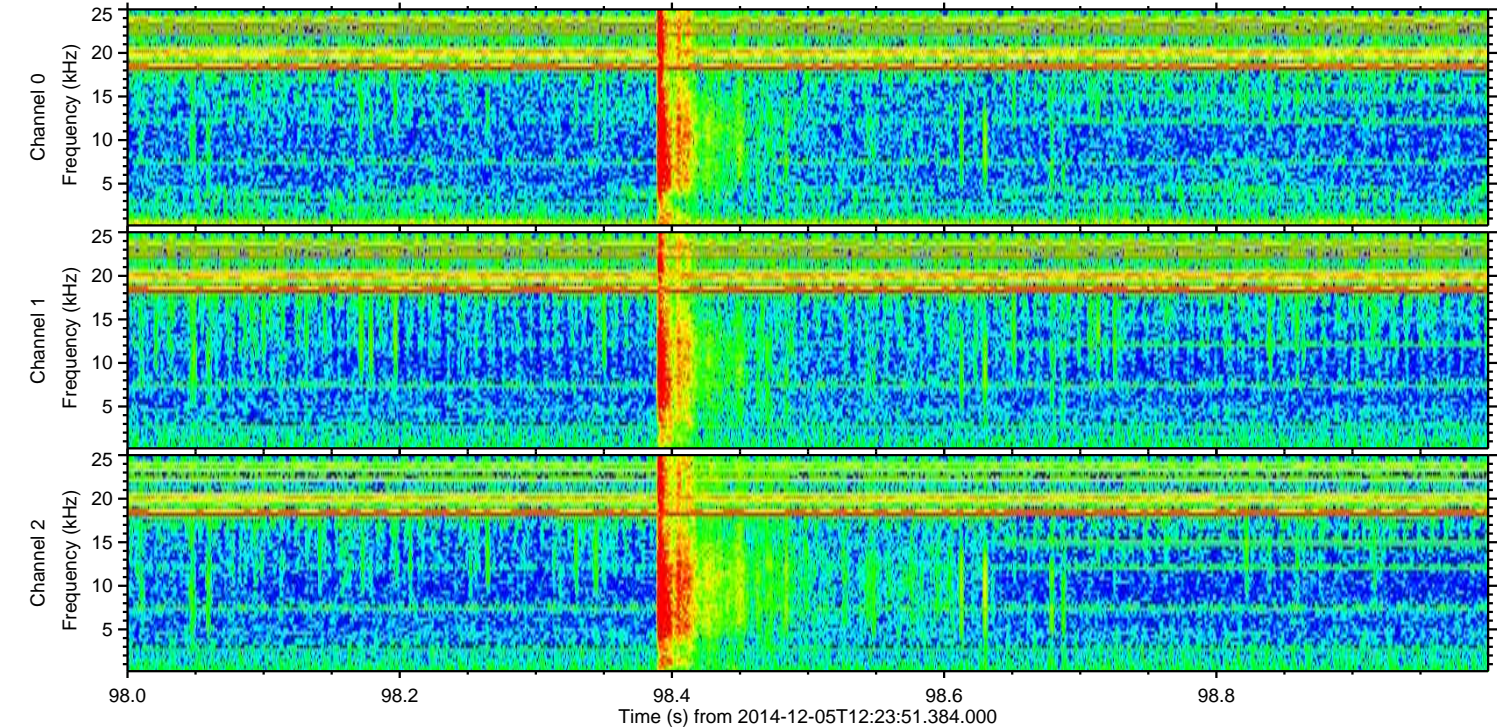
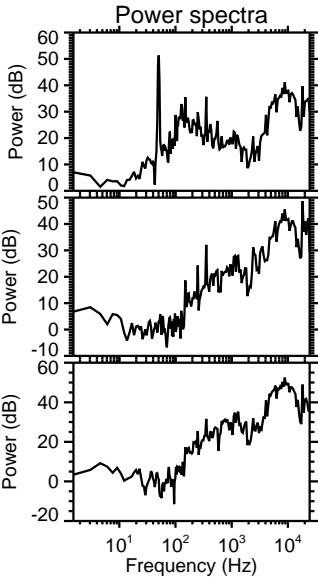
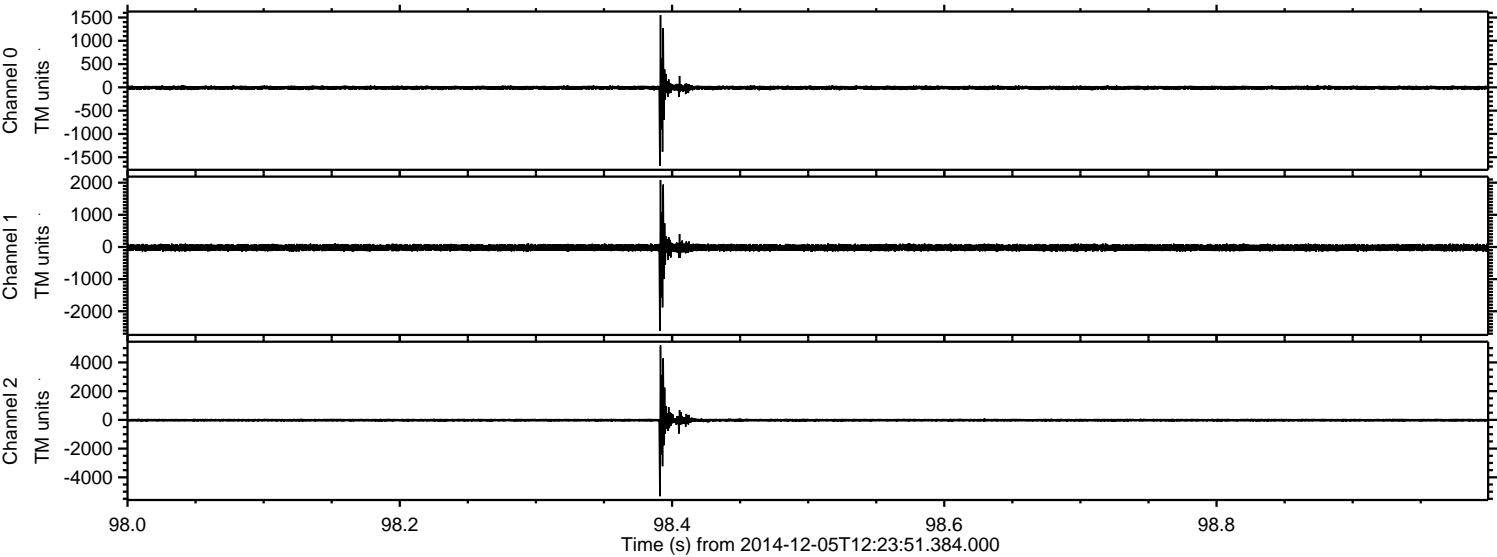
Processed Fri Dec 5 14:18:46 2014 by ELM ver.2012-10-06 from 001__elm20141205_122350__dat00.bin



Processed Fri Dec 5 14:18:47 2014 by ELM ver.2012-10-06 from 001__elm20141205_122350__dat00.bin

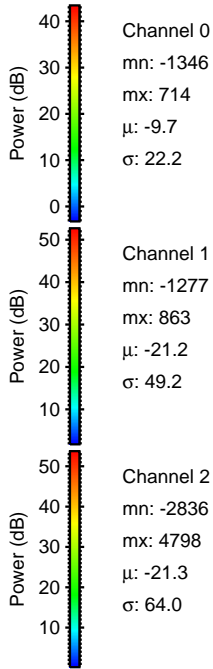
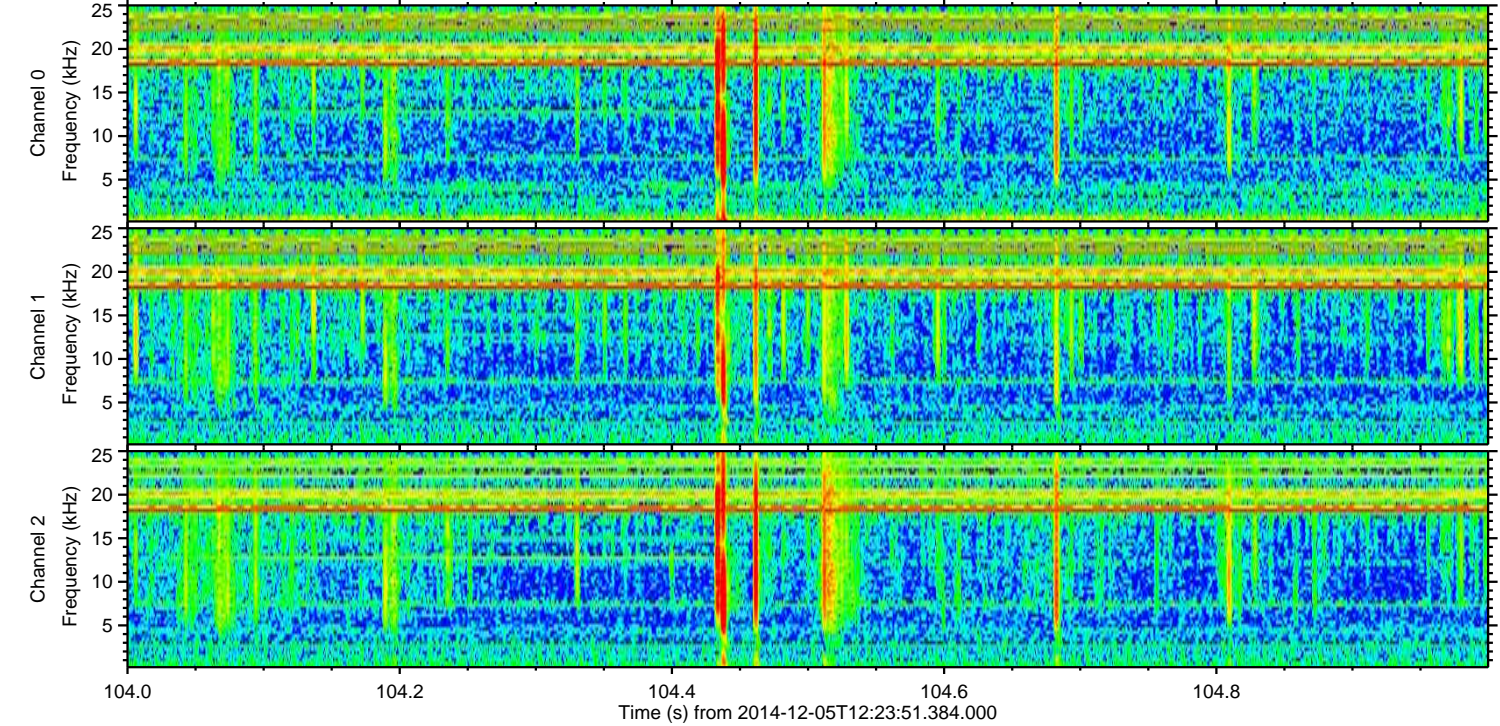
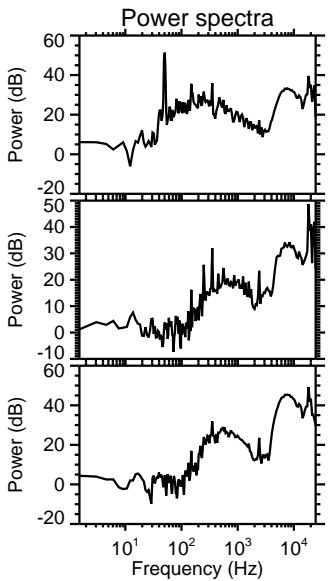
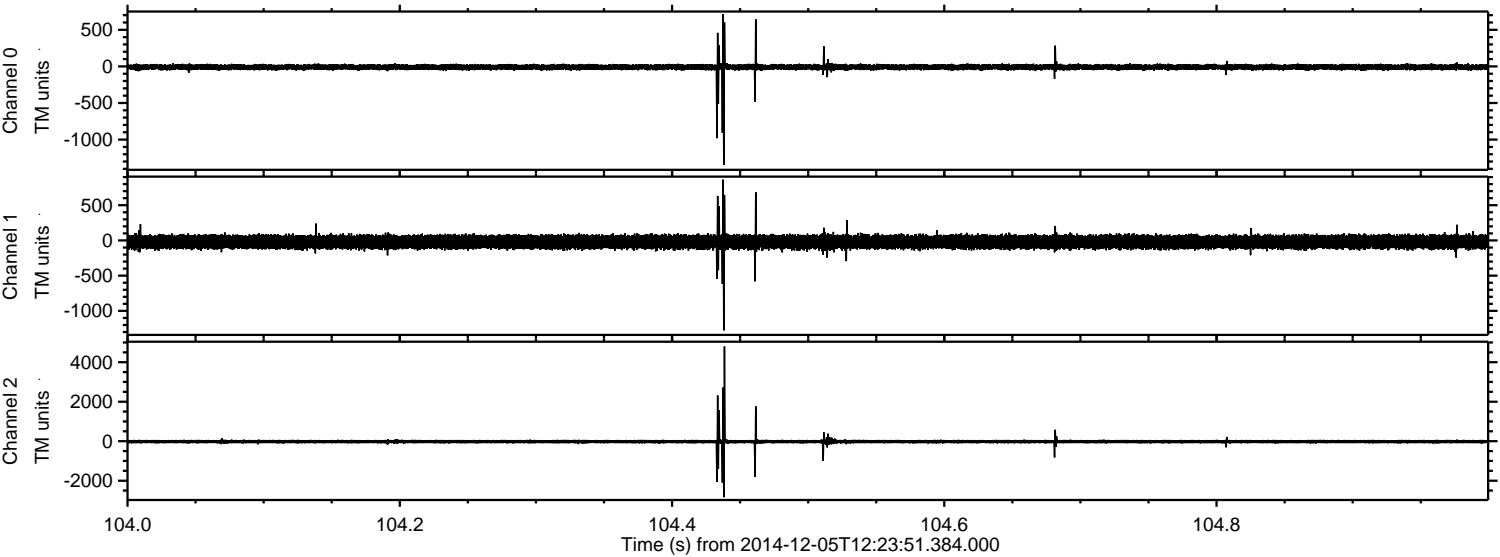


Processed Fri Dec 5 14:18:48 2014 by ELM ver.2012-10-06 from 001__elm20141205_122350__dat00.bin



ELMAVAN 3D WAVEFORMS (Measured data sampled at 50 kHz) 49775 packets of 144 samples from 2014-12-05T12:23:51.384.000. Part 105/144

Processed Fri Dec 5 14:18:49 2014 by ELM ver.2012-10-06 from 001__elm20141205_122350__dat00.bin

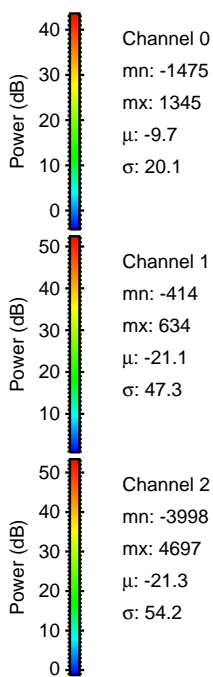
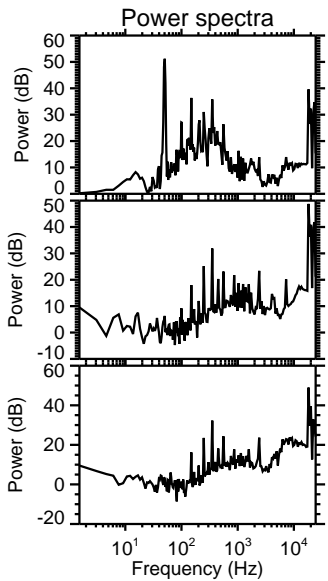
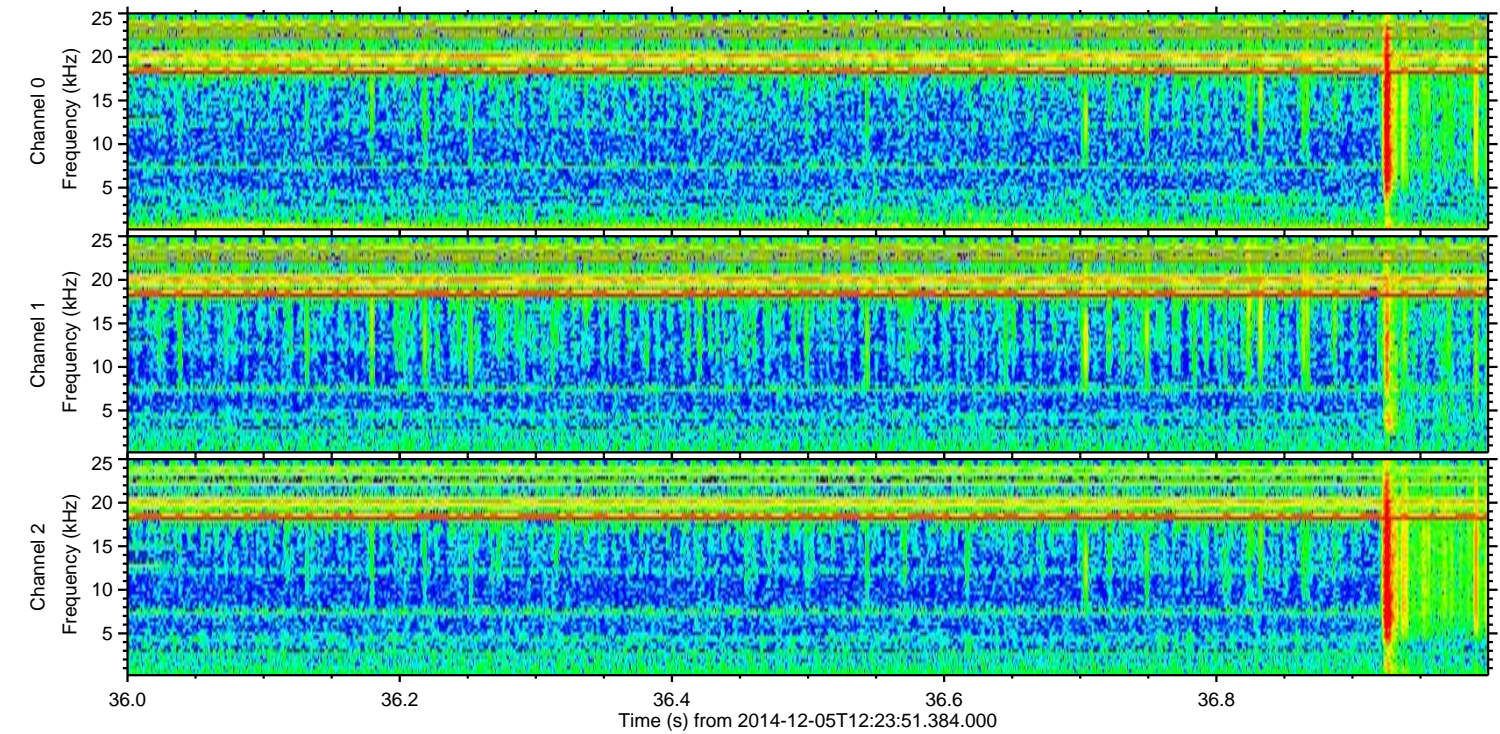
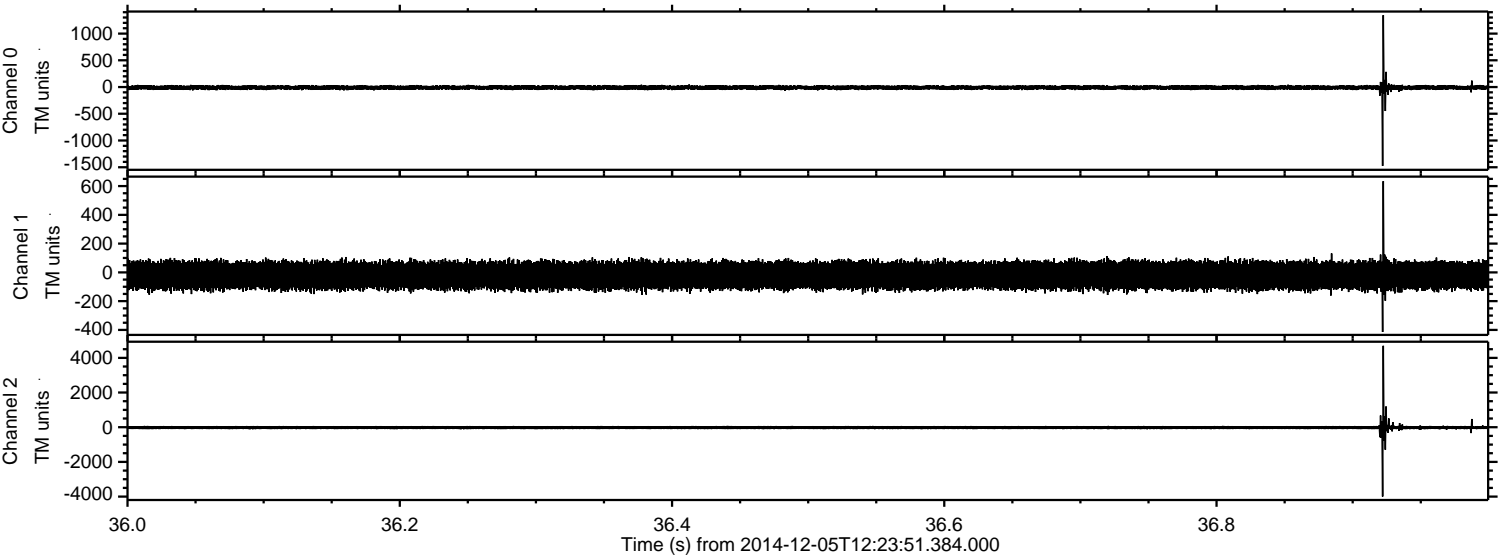


Channel 0
mn: -1346
mx: 714
 μ : -9.7
 σ : 22.2

Channel 1
mn: -1277
mx: 863
 μ : -21.2
 σ : 49.2

Channel 2
mn: -2836
mx: 4798
 μ : -21.3
 σ : 64.0

Processed Fri Dec 5 14:18:50 2014 by ELM ver.2012-10-06 from 001__elm20141205_122350__dat00.bin



Channel 0

mn: -1475

mx: 1345

μ: -9.7

σ: 20.1

Channel 1

mn: -414

mx: 634

μ: -21.1

σ: 47.3

Channel 2

mn: -3998

mx: 4697

μ: -21.3

σ: 54.2

