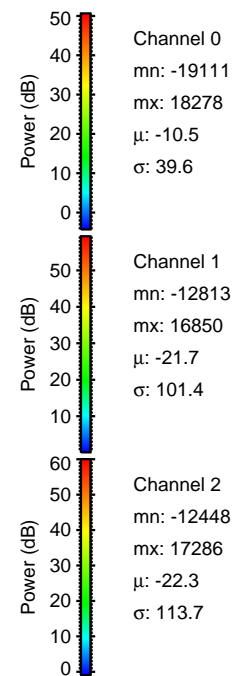
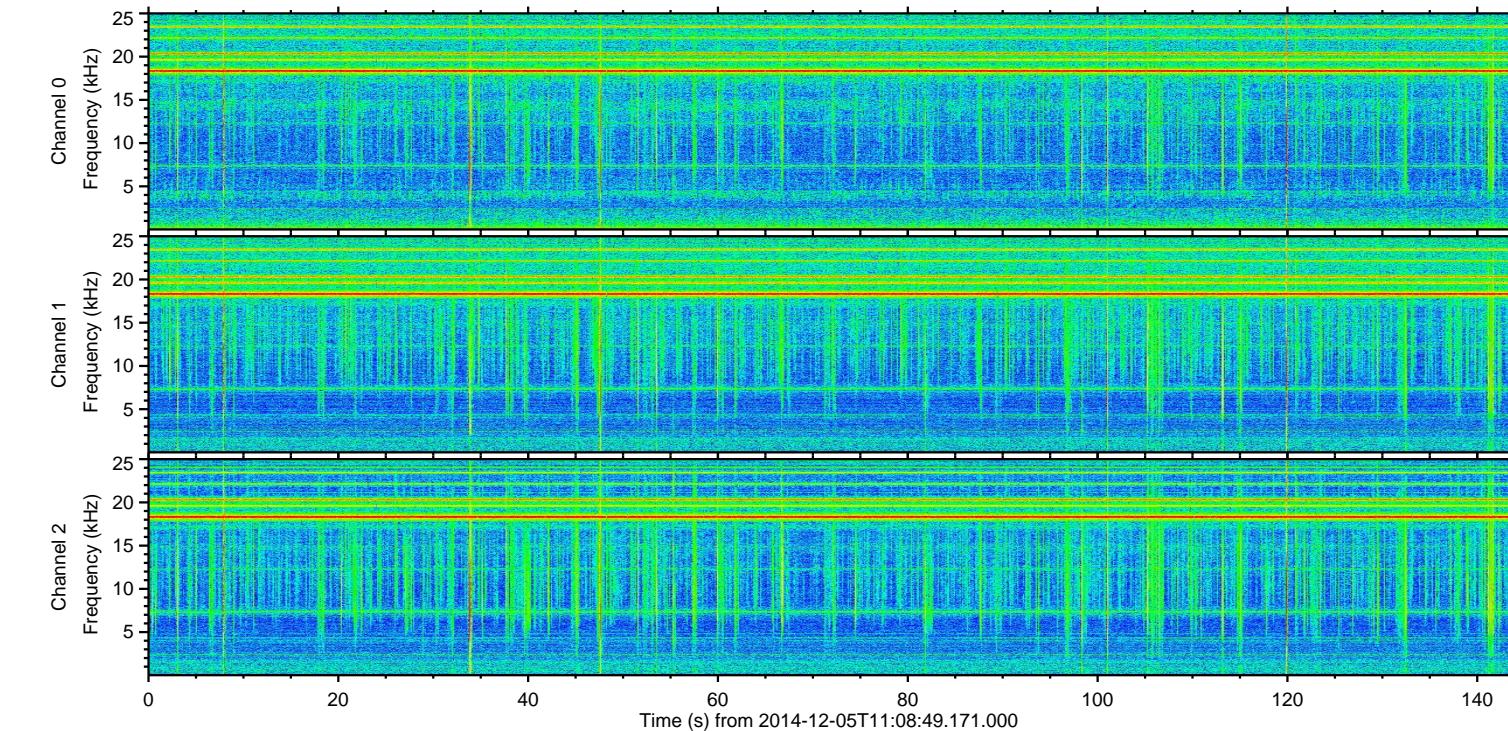
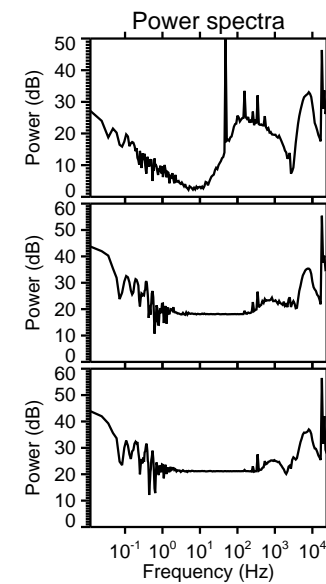
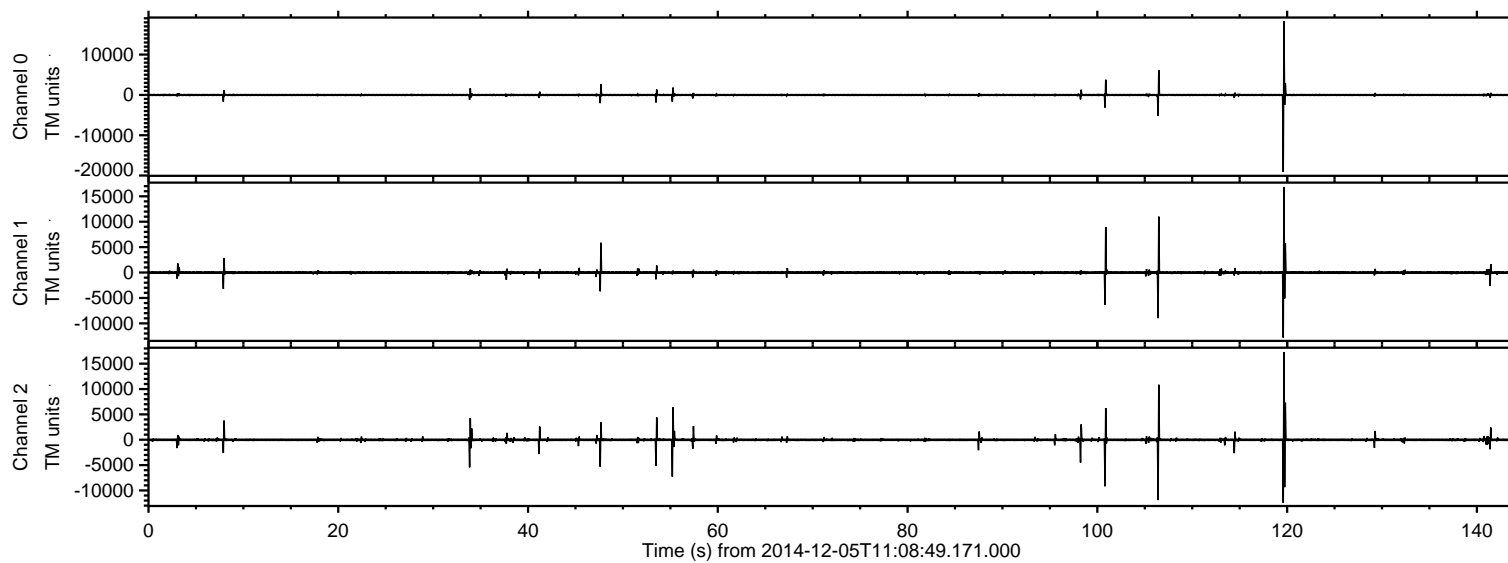


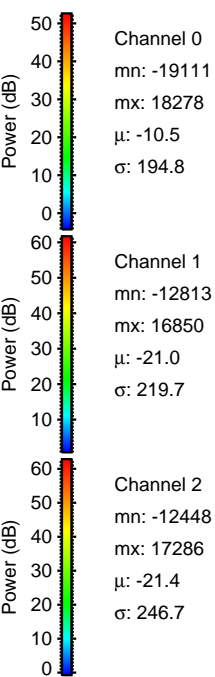
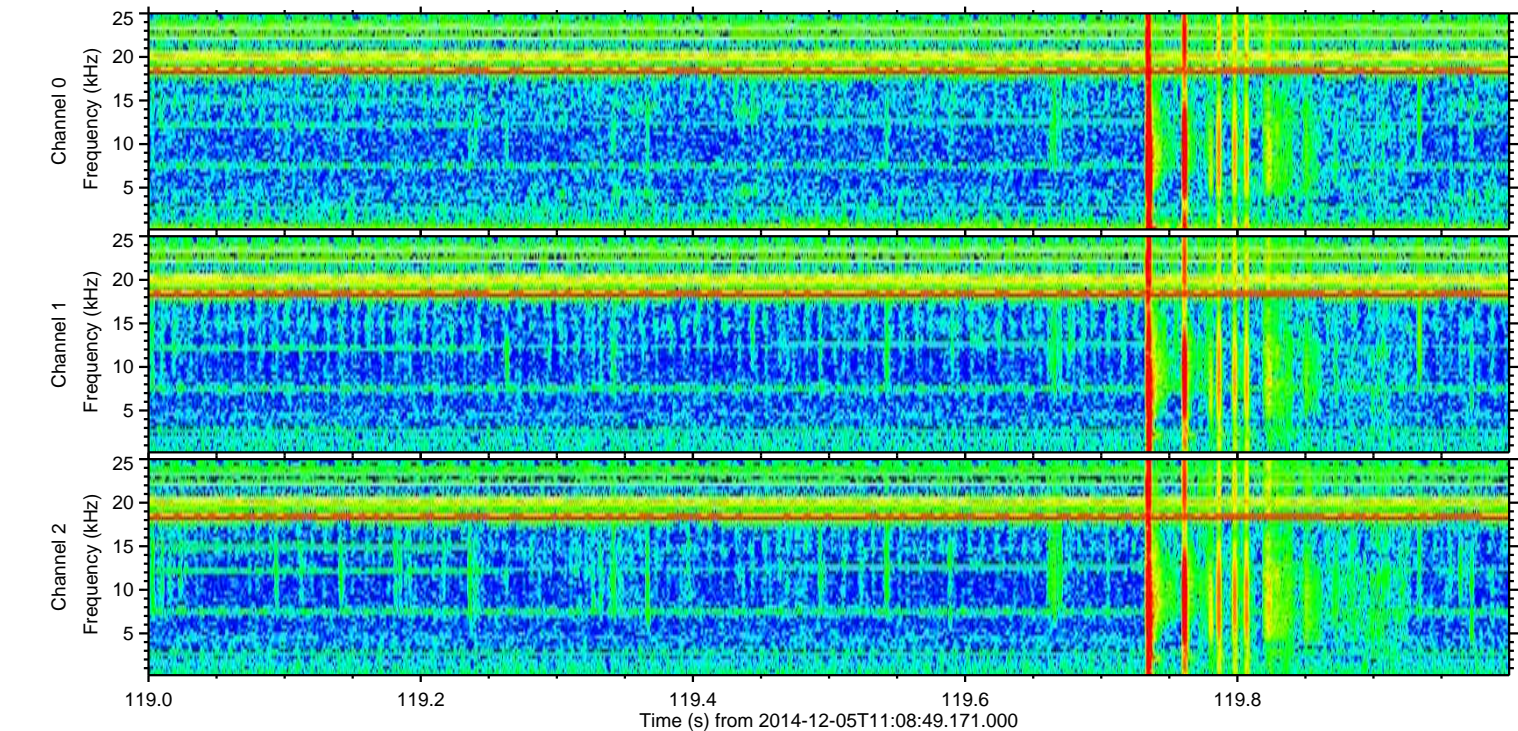
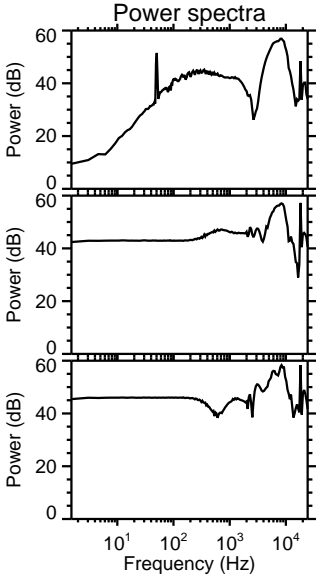
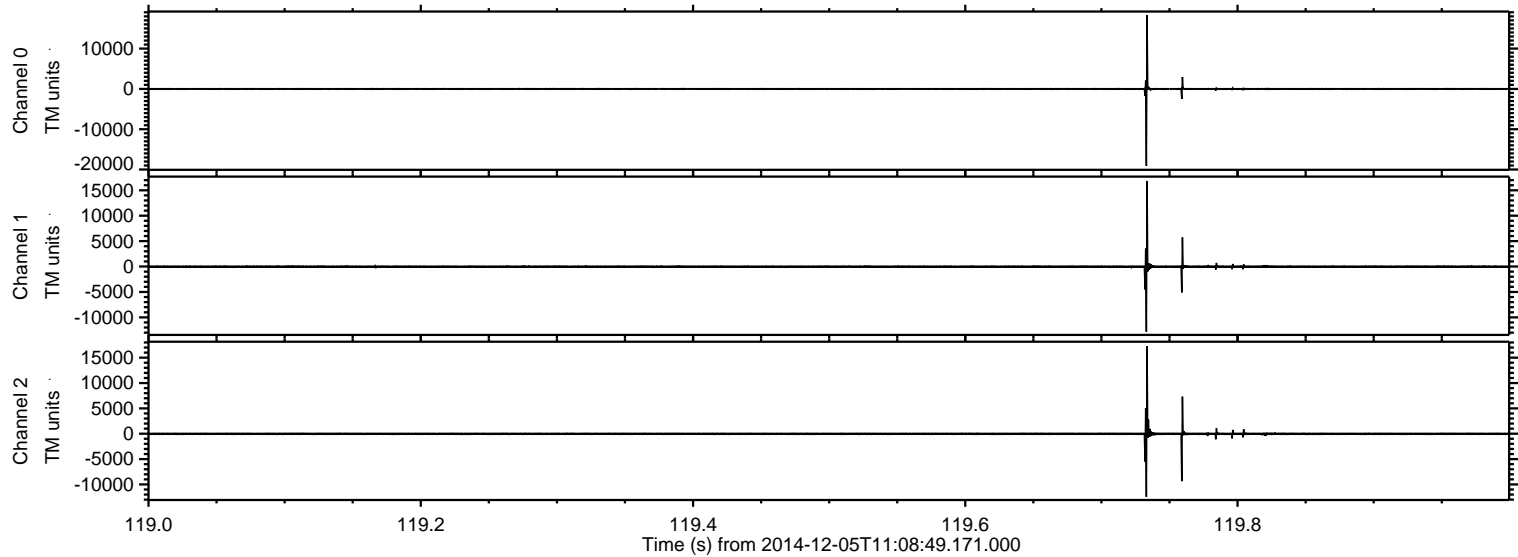
ELMAVAN 3D WAVEFORMS (Measured data sampled at 50 kHz) 49792 packets of 144 samples from 2014-12-05T11:08:49.171.000.

Processed Fri Dec 5 13:39:56 2014 by ELM ver.2012-10-06 from 001__elm20141205_110848__dat00.bin



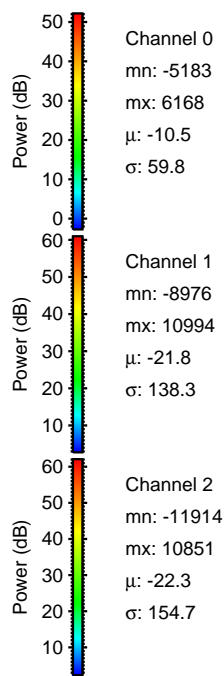
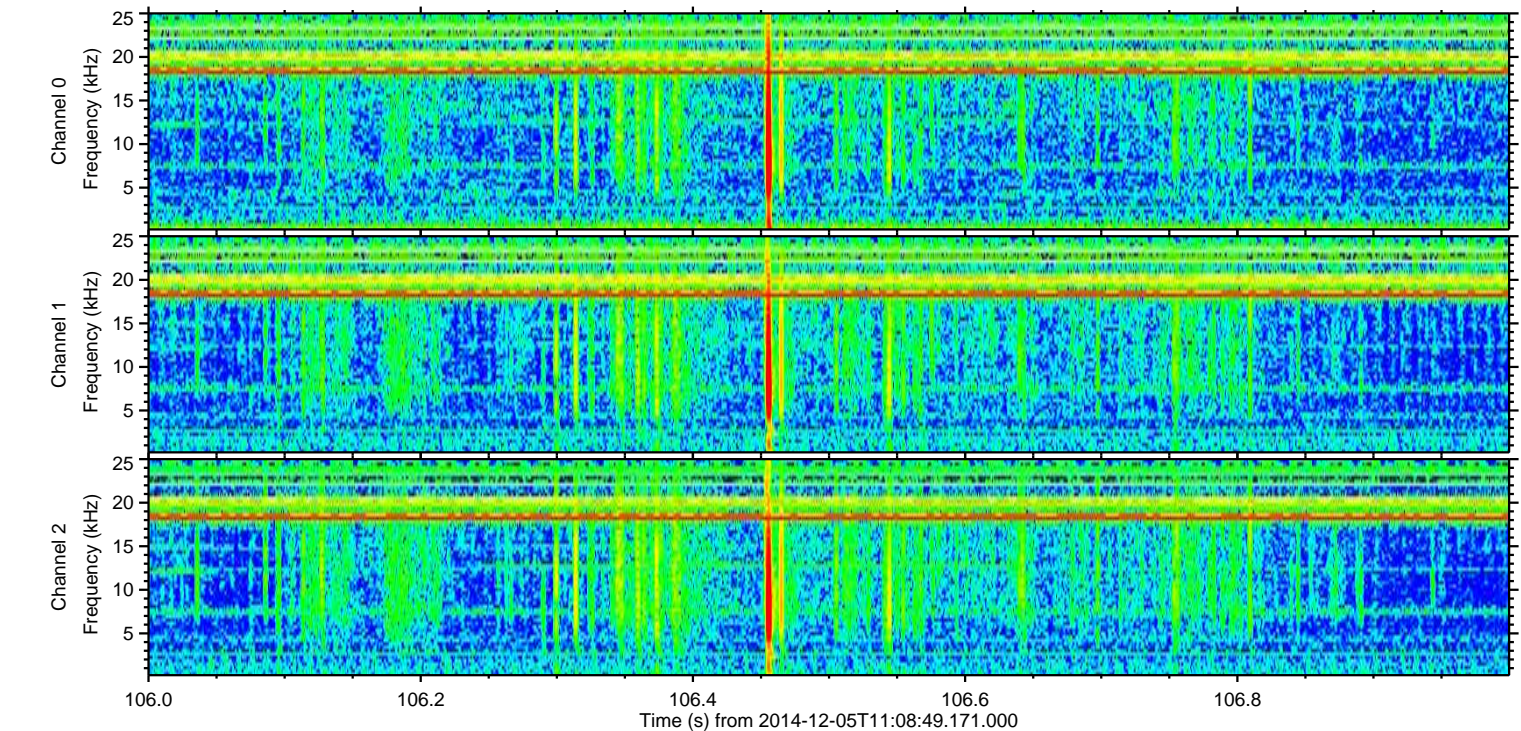
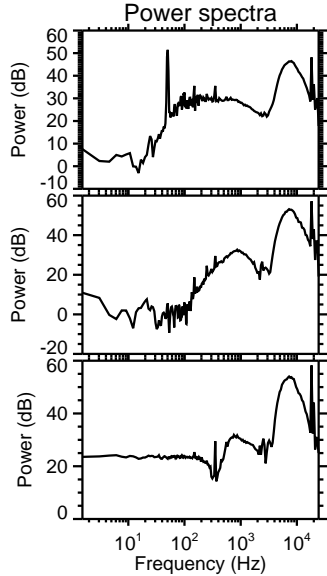
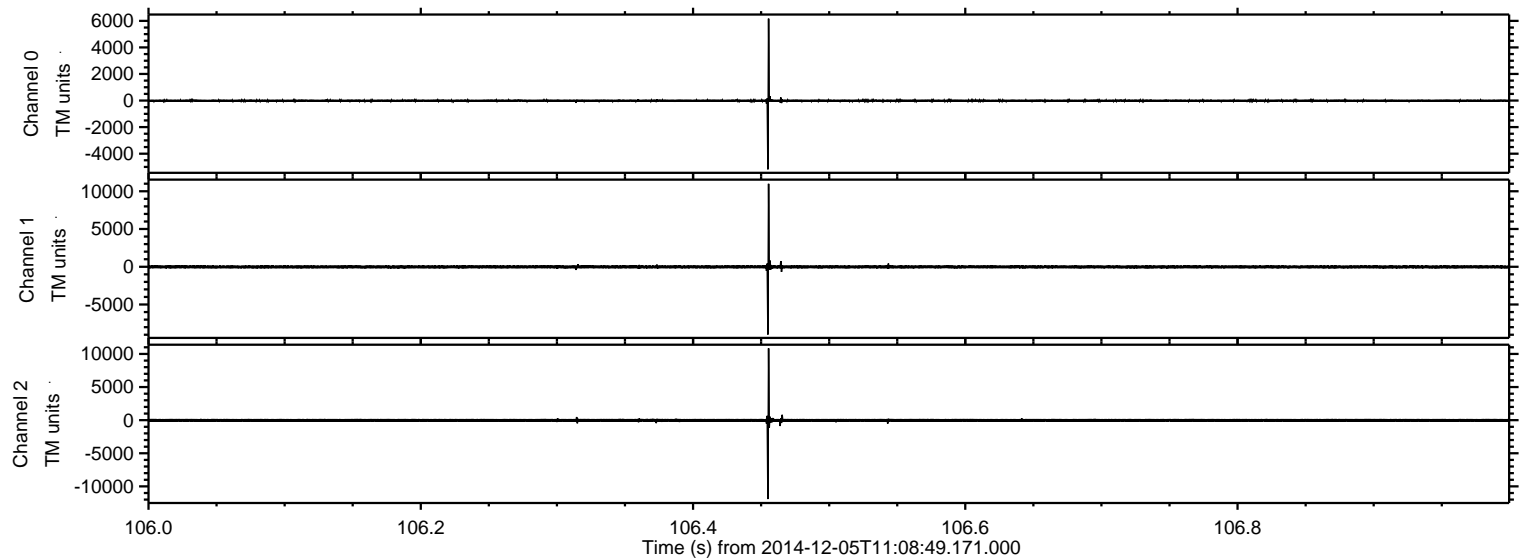
ELMAVAN 3D WAVEFORMS (Measured data sampled at 50 kHz) 49792 packets of 144 samples from 2014-12-05T11:08:49.171.000. Part 120/144

Processed Fri Dec 5 13:40:07 2014 by ELM ver.2012-10-06 from 001__elm20141205_110848__dat00.bin



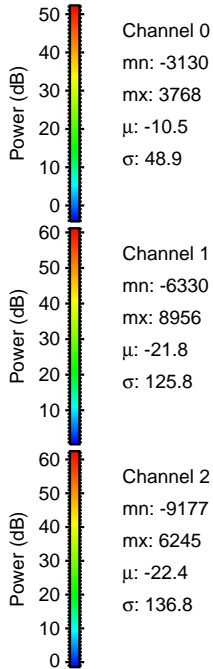
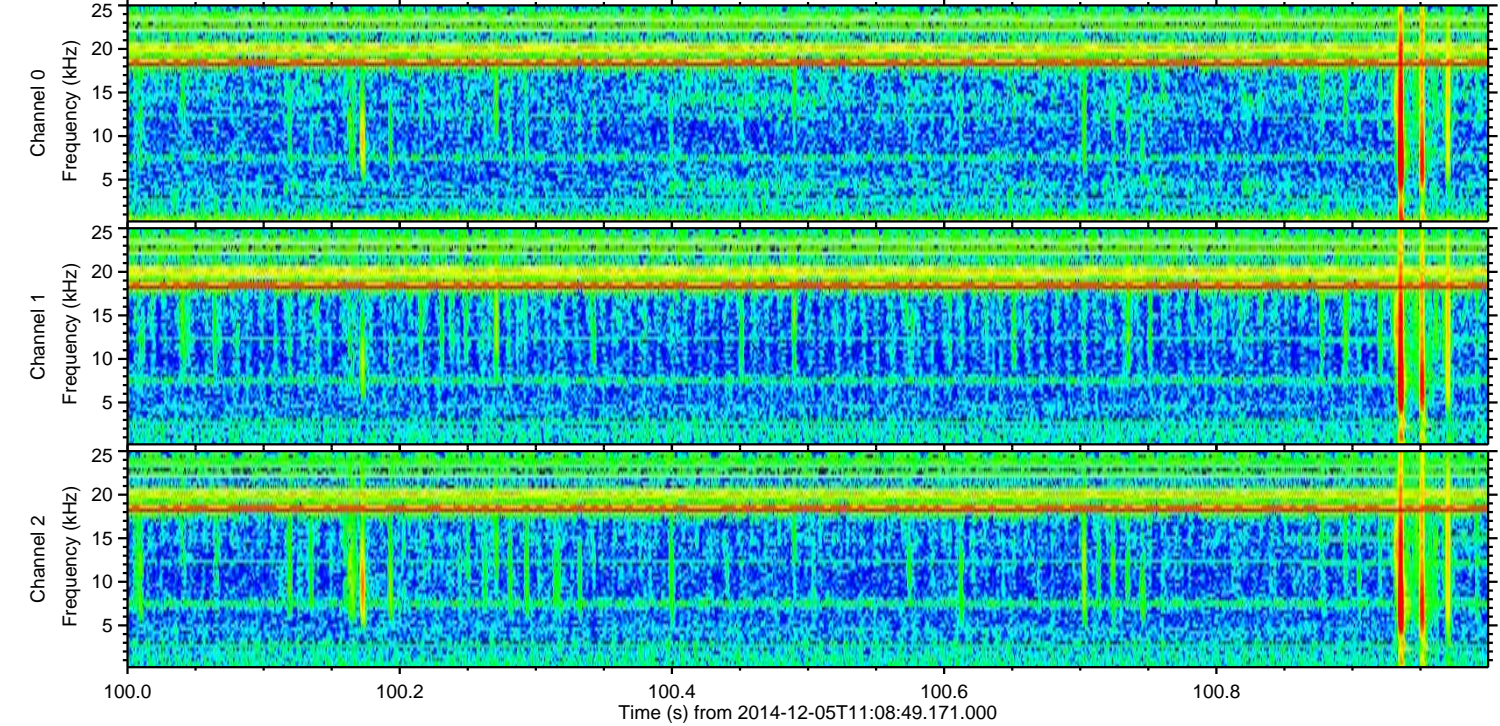
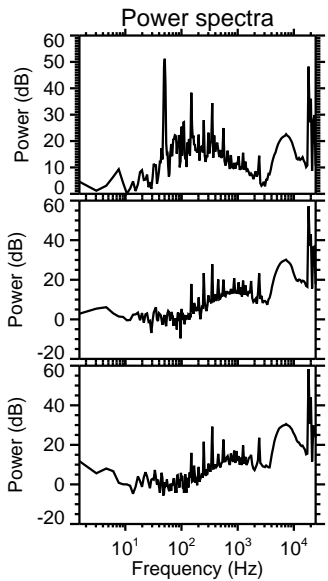
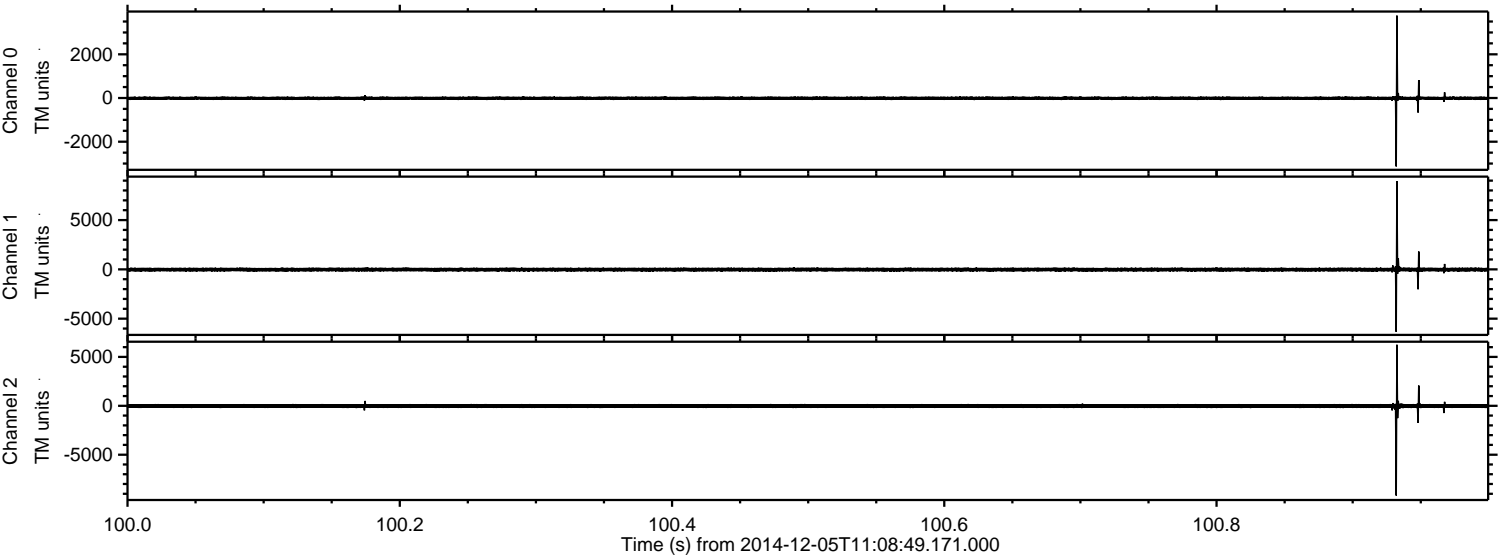
ELMAVAN 3D WAVEFORMS (Measured data sampled at 50 kHz) 49792 packets of 144 samples from 2014-12-05T11:08:49.171.000. Part 107/144

Processed Fri Dec 5 13:40:08 2014 by ELM ver.2012-10-06 from 001__elm20141205_110848__dat00.bin

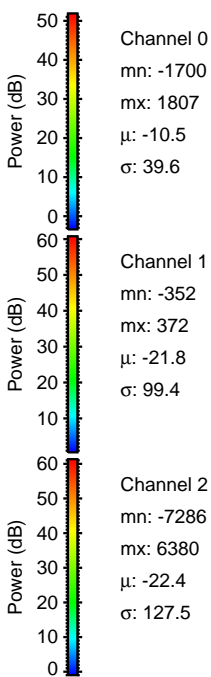
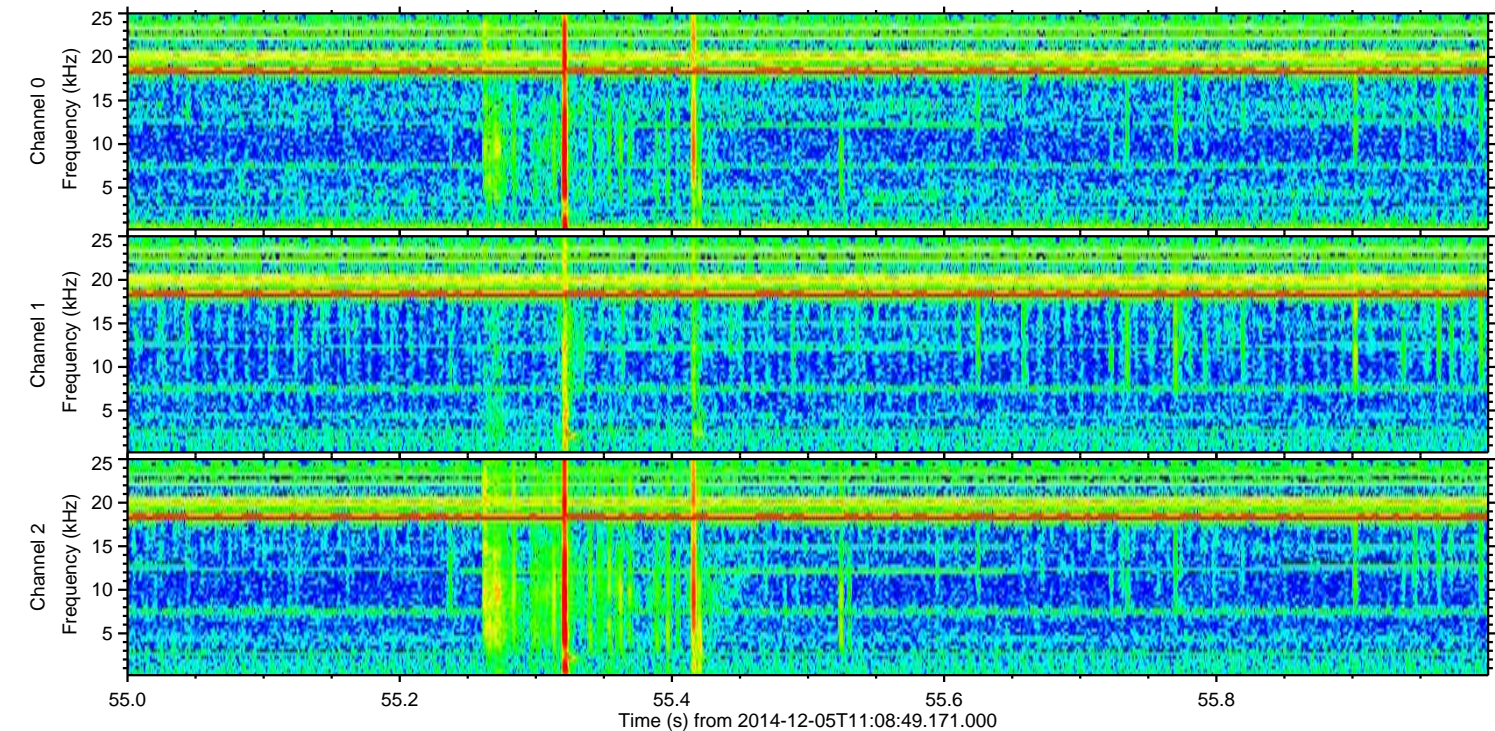
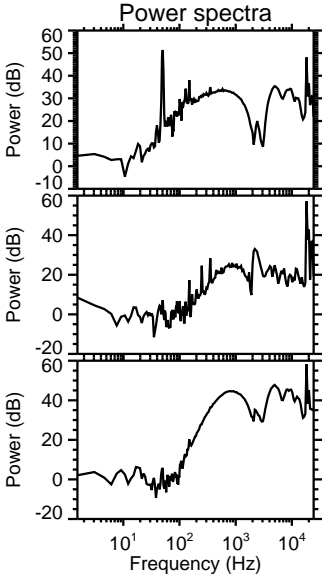
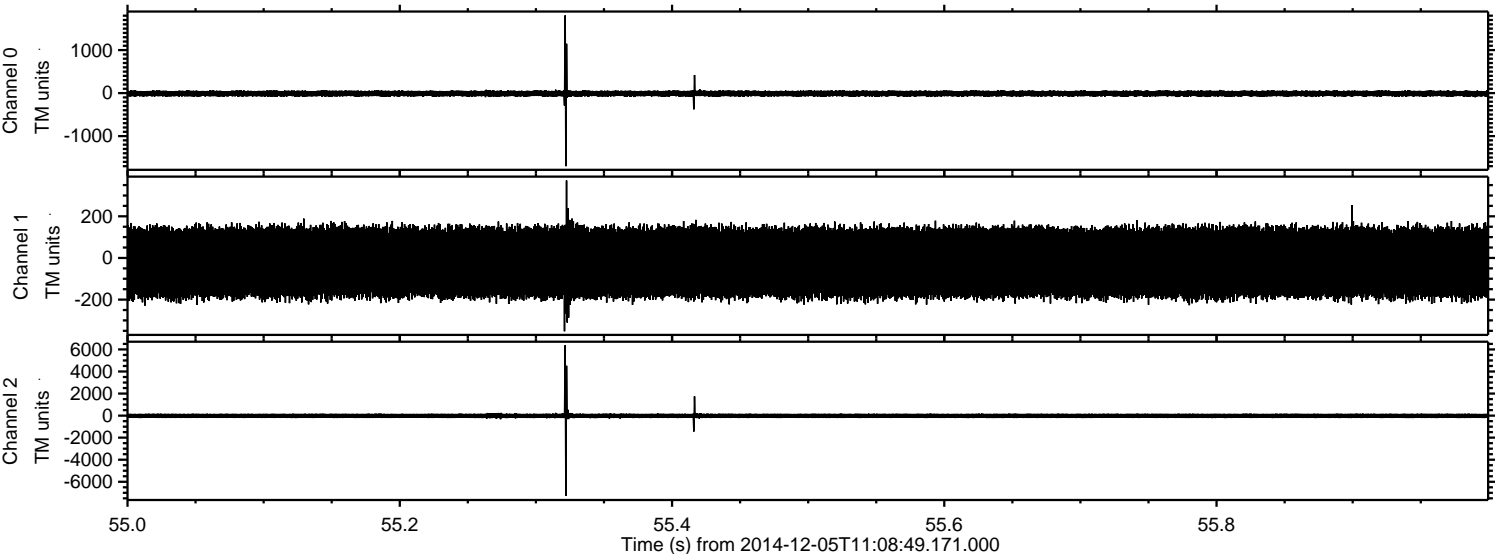


ELMAVAN 3D WAVEFORMS (Measured data sampled at 50 kHz) 49792 packets of 144 samples from 2014-12-05T11:08:49.171.000. Part 101/144

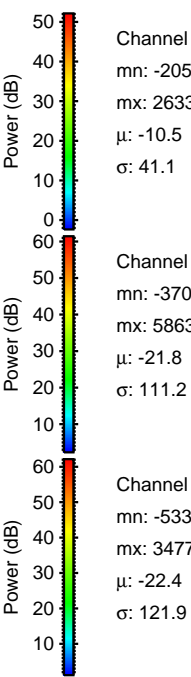
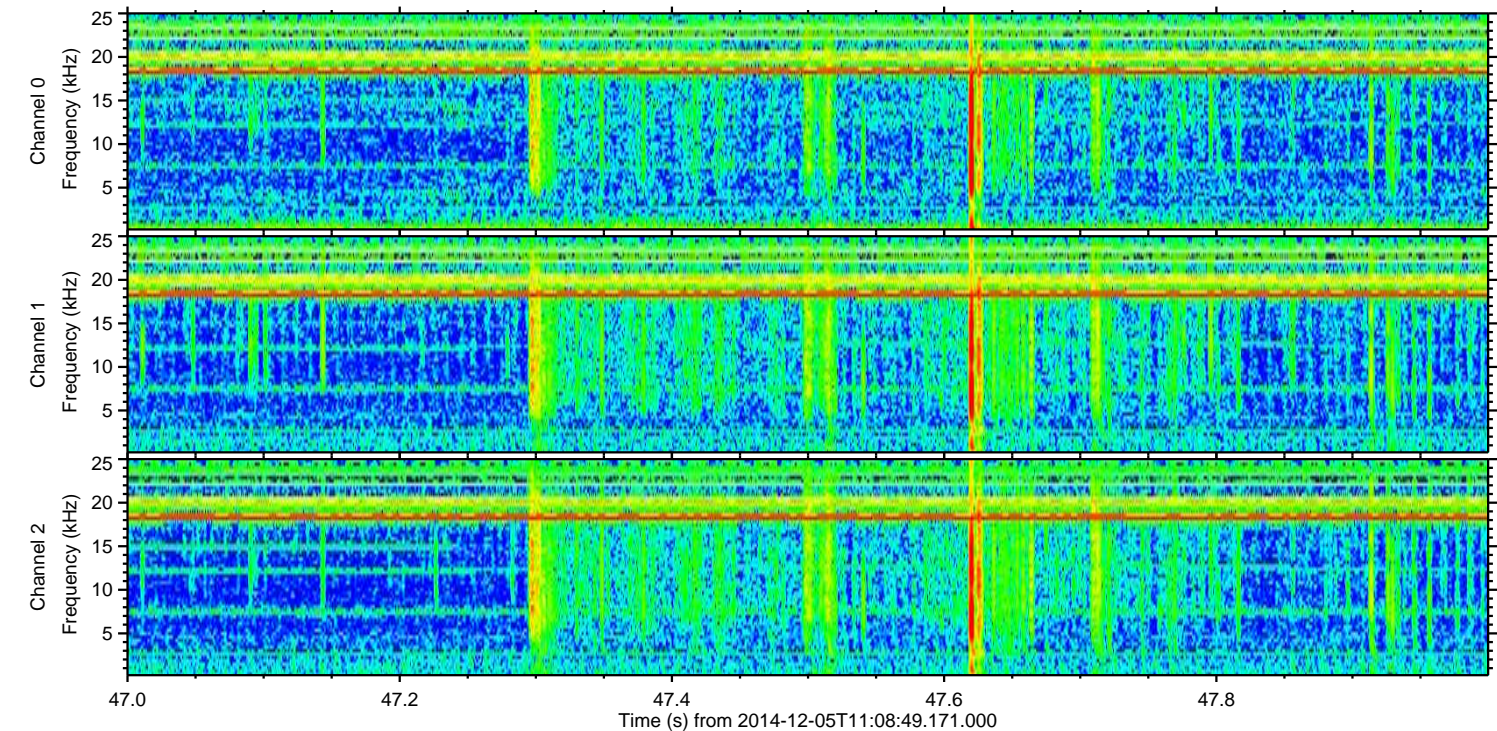
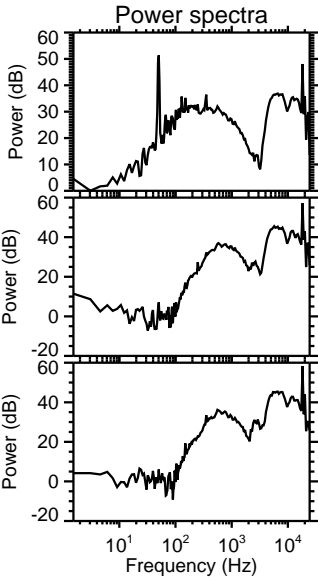
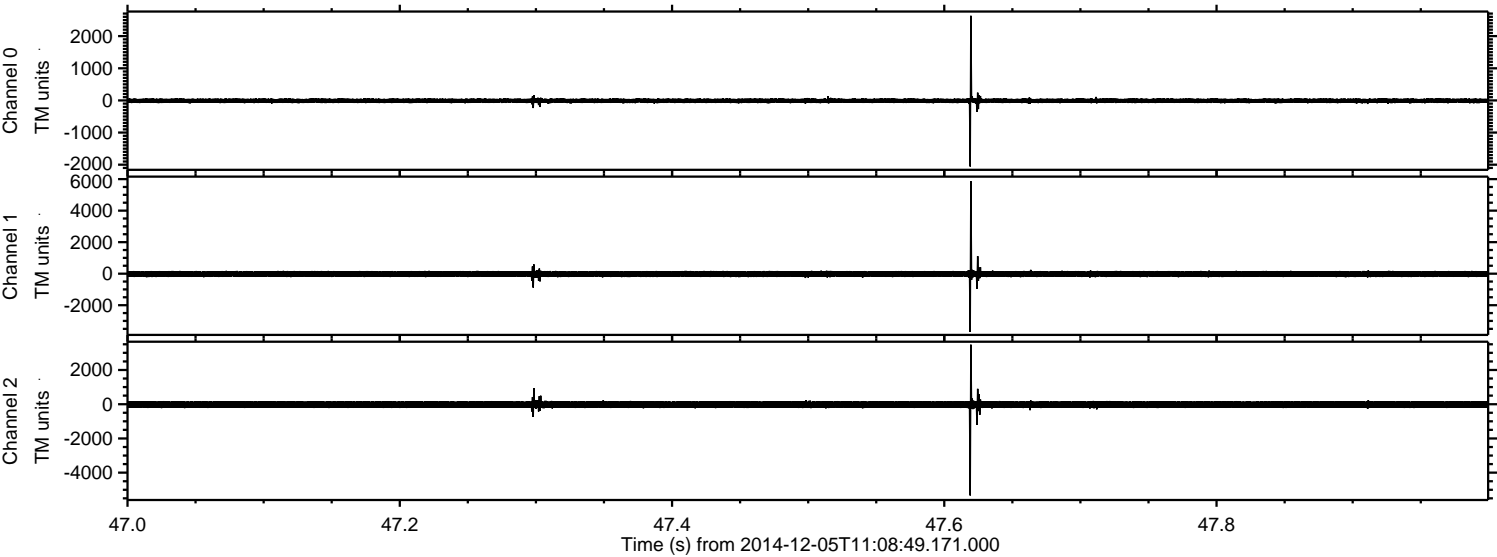
Processed Fri Dec 5 13:40:09 2014 by ELM ver.2012-10-06 from 001__elm20141205_110848__dat00.bin



Processed Fri Dec 5 13:40:10 2014 by ELM ver.2012-10-06 from 001__elm20141205_110848__dat00.bin

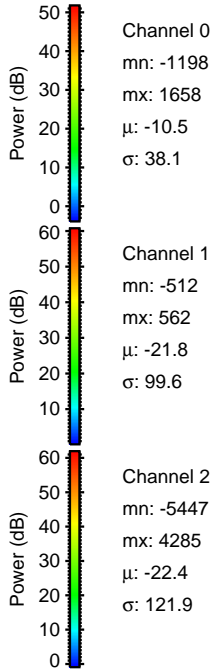
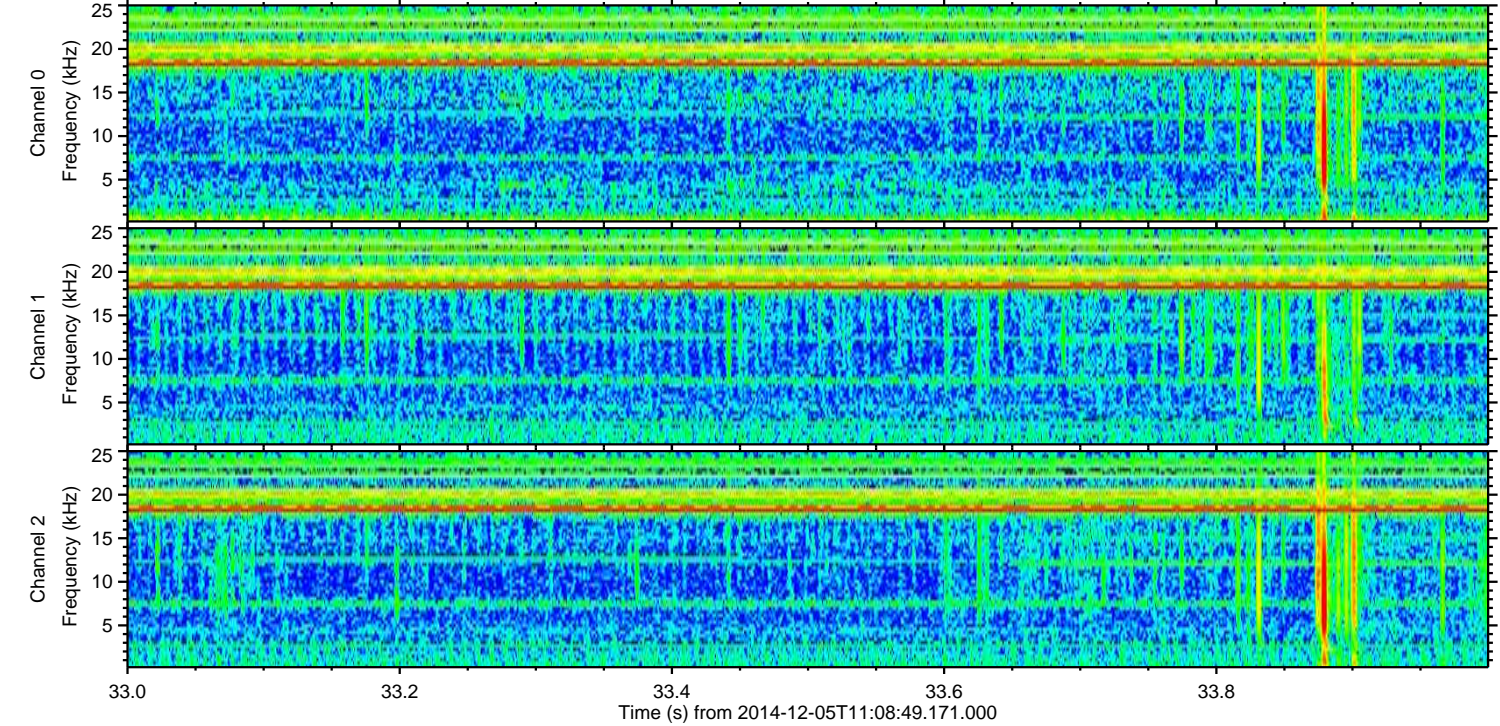
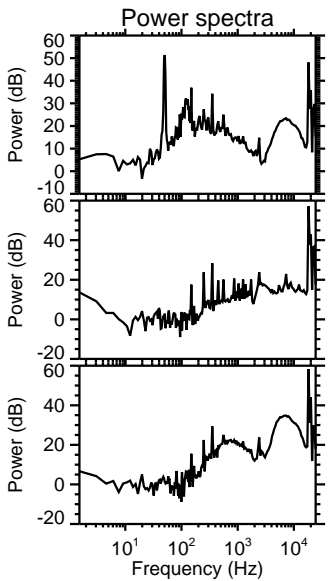
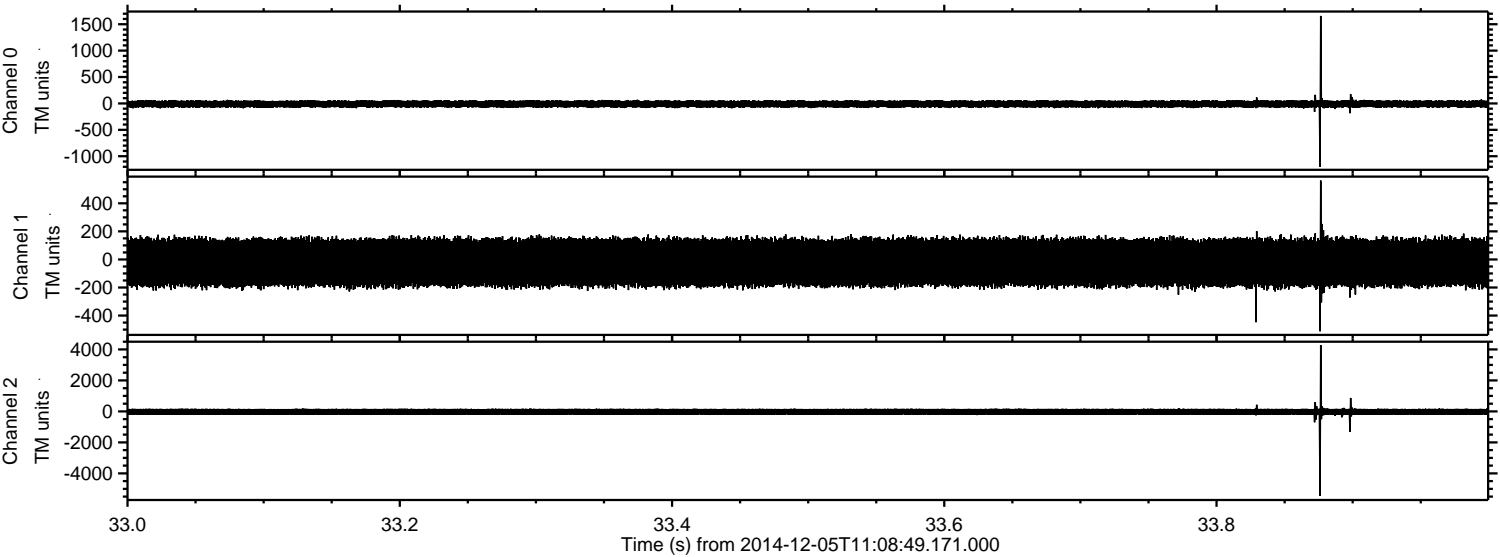


Processed Fri Dec 5 13:40:11 2014 by ELM ver.2012-10-06 from 001__elm20141205_110848__dat00.bin



ELMAVAN 3D WAVEFORMS (Measured data sampled at 50 kHz) 49792 packets of 144 samples from 2014-12-05T11:08:49.171.000. Part 34/144

Processed Fri Dec 5 13:40:12 2014 by ELM ver.2012-10-06 from 001__elm20141205_110848__dat00.bin

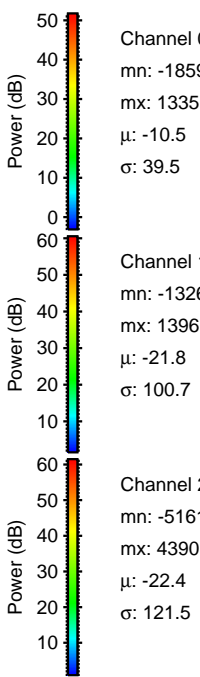
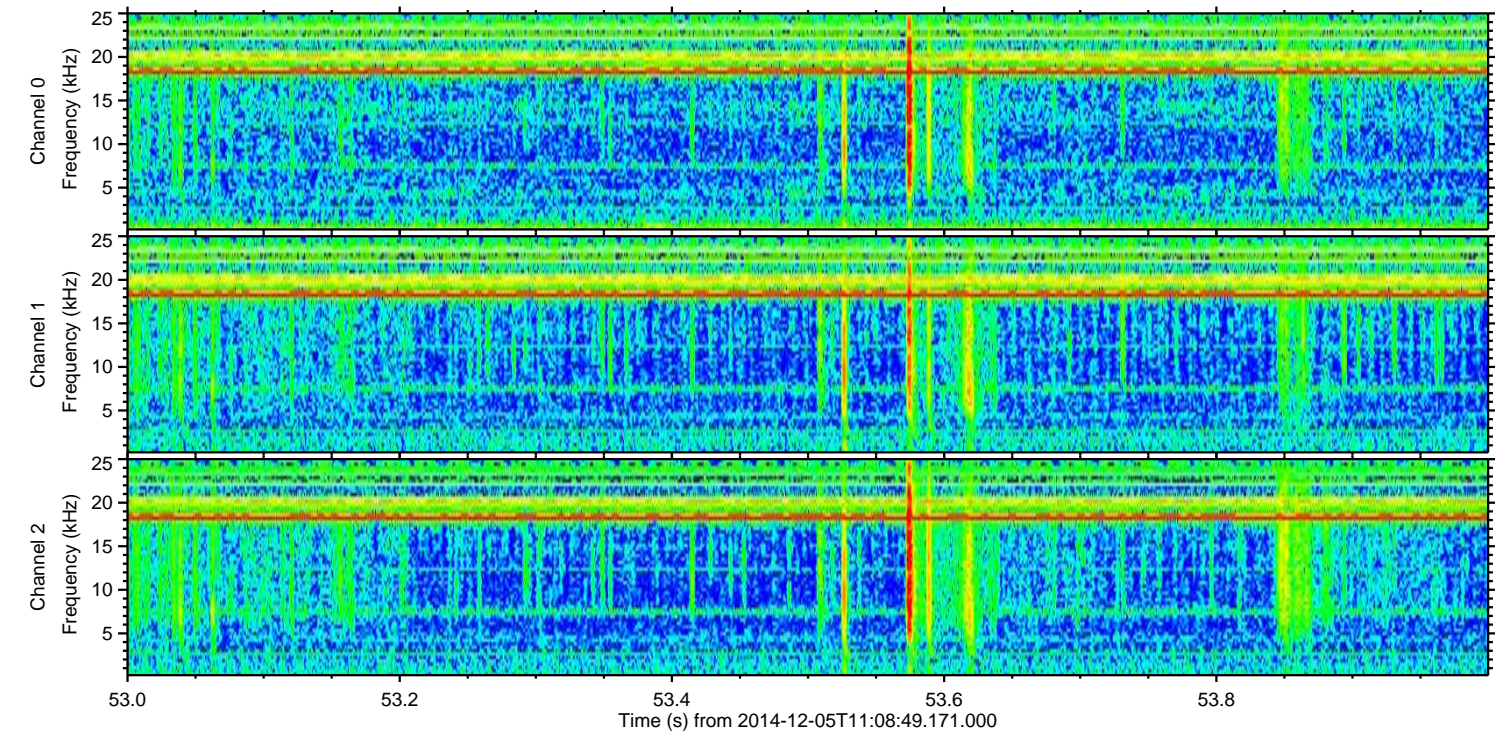
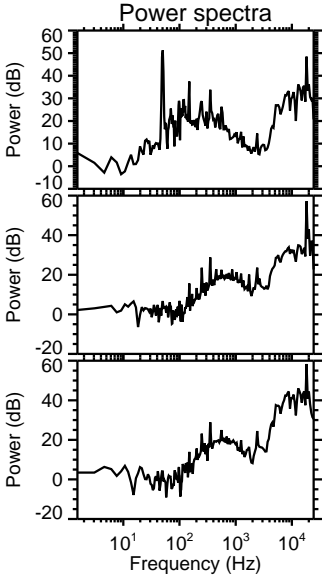
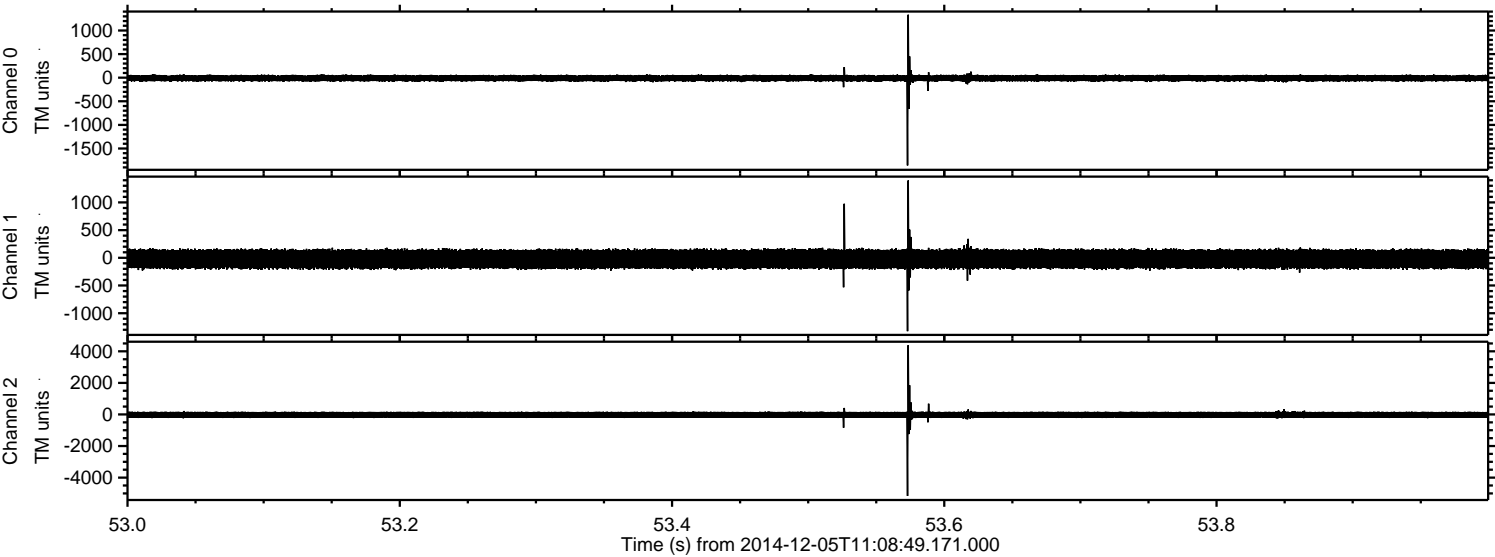


Channel 0
mn: -1198
mx: 1658
 μ : -10.5
 σ : 38.1

Channel 1
mn: -512
mx: 562
 μ : -21.8
 σ : 99.6

Channel 2
mn: -5447
mx: 4285
 μ : -22.4
 σ : 121.9

Processed Fri Dec 5 13:40:13 2014 by ELM ver.2012-10-06 from 001__elm20141205_110848__dat00.bin

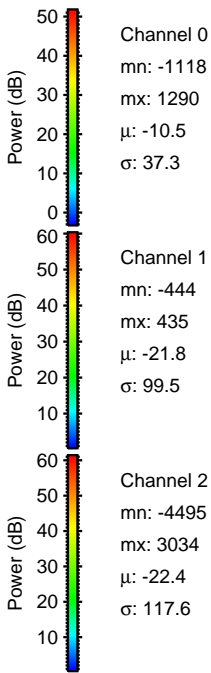
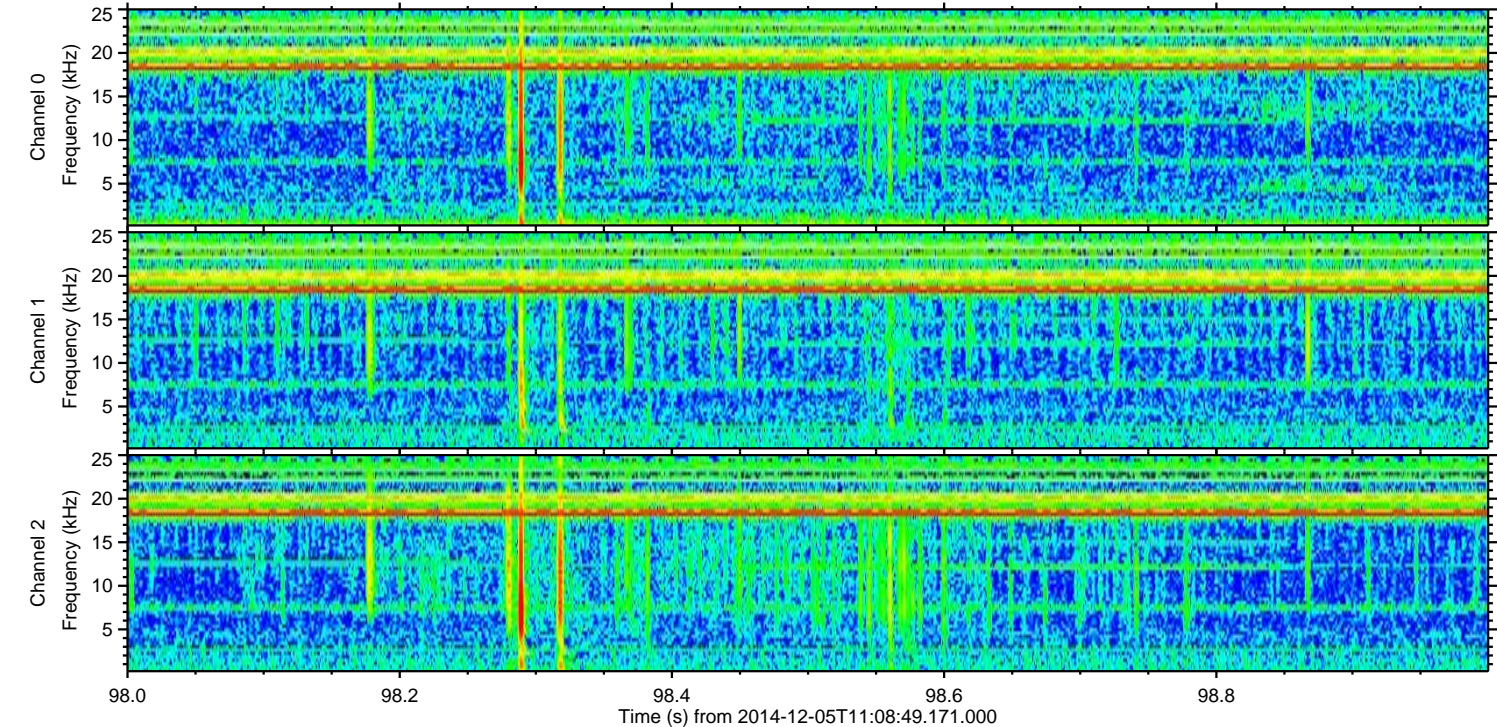
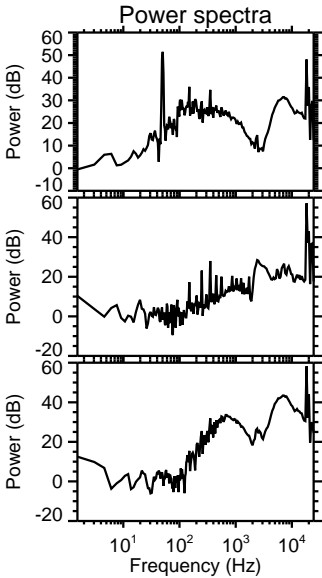
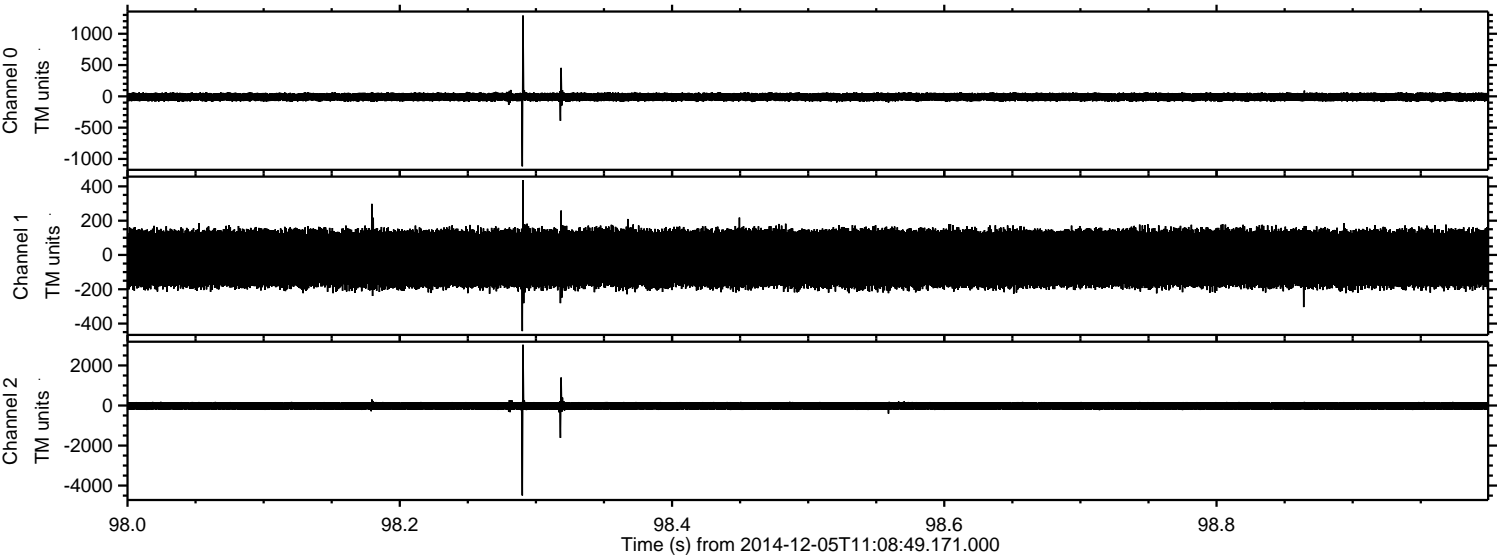


Channel 0
mn: -1859
mx: 1335
 μ : -10.5
 σ : 39.5

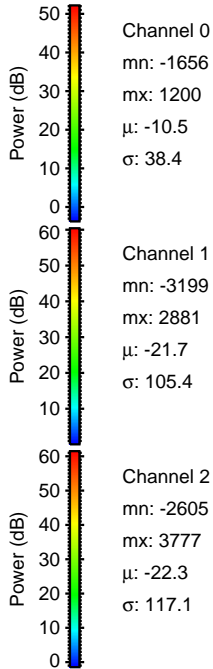
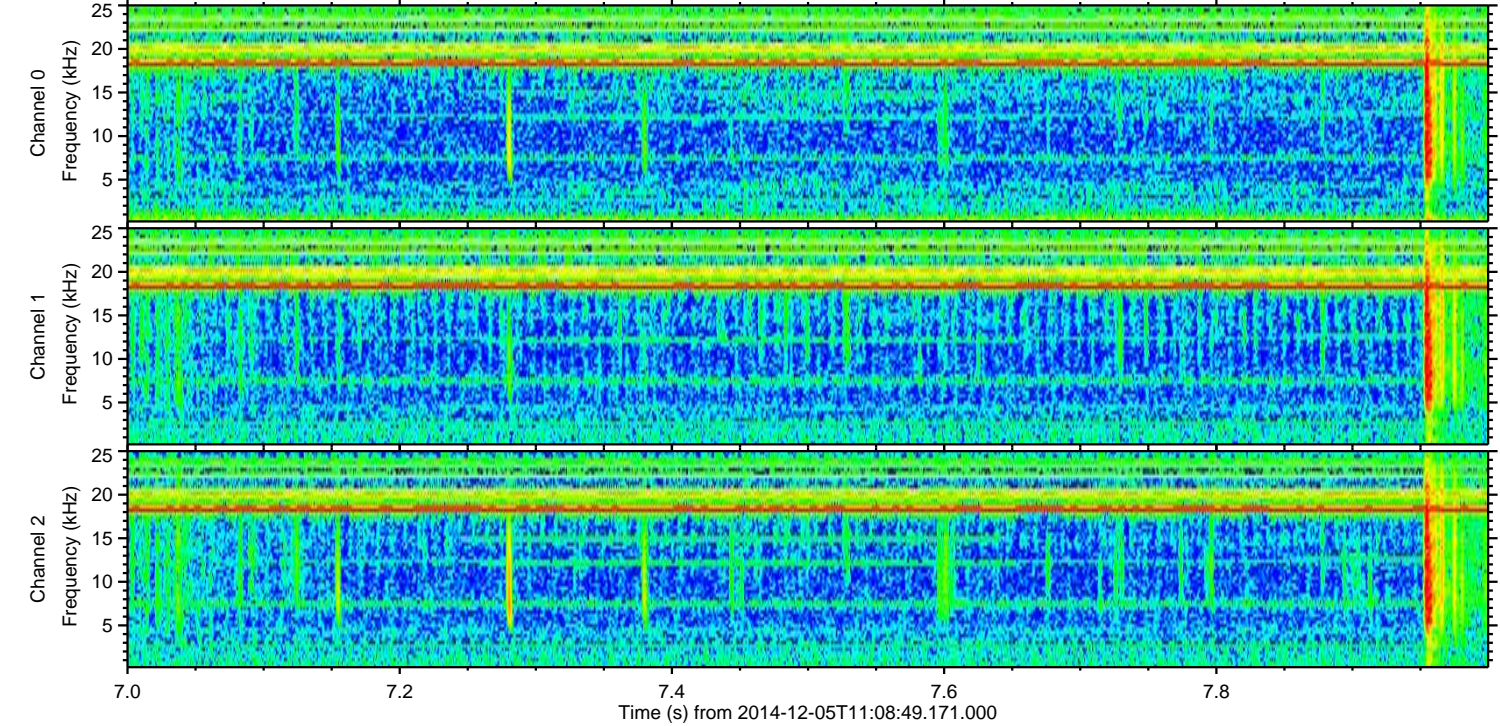
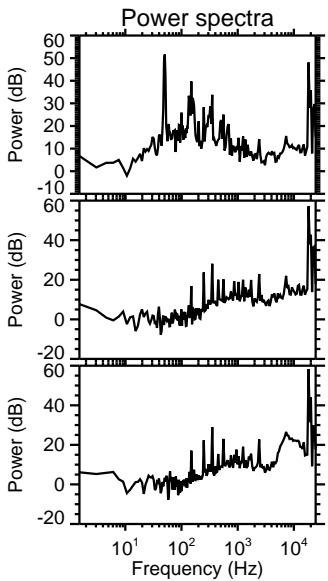
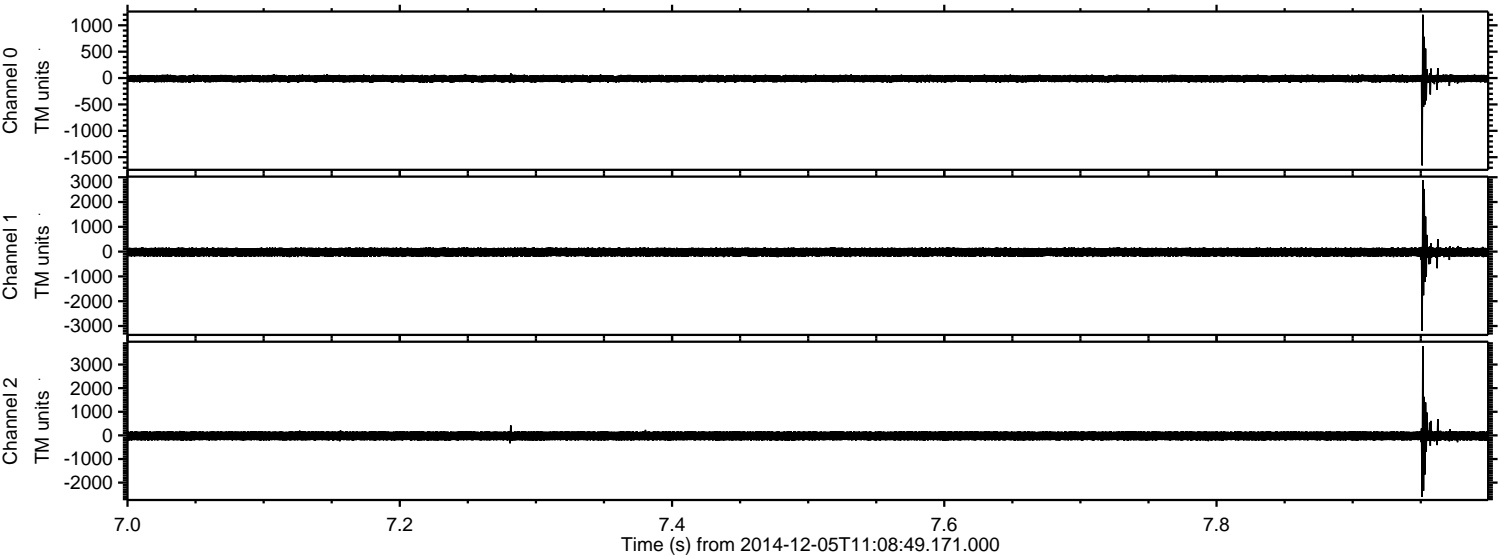
Channel 1
mn: -1326
mx: 1396
 μ : -21.8
 σ : 100.7

Channel 2
mn: -5161
mx: 4390
 μ : -22.4
 σ : 121.5

Processed Fri Dec 5 13:40:14 2014 by ELM ver.2012-10-06 from 001__elm20141205_110848__dat00.bin



Processed Fri Dec 5 13:40:15 2014 by ELM ver.2012-10-06 from 001__elm20141205_110848__dat00.bin



Processed Fri Dec 5 13:40:16 2014 by ELM ver.2012-10-06 from 001__elm20141205_110848__dat00.bin

