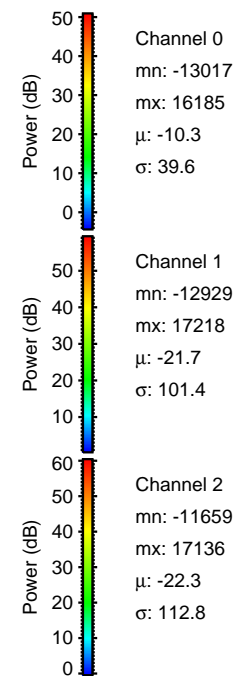
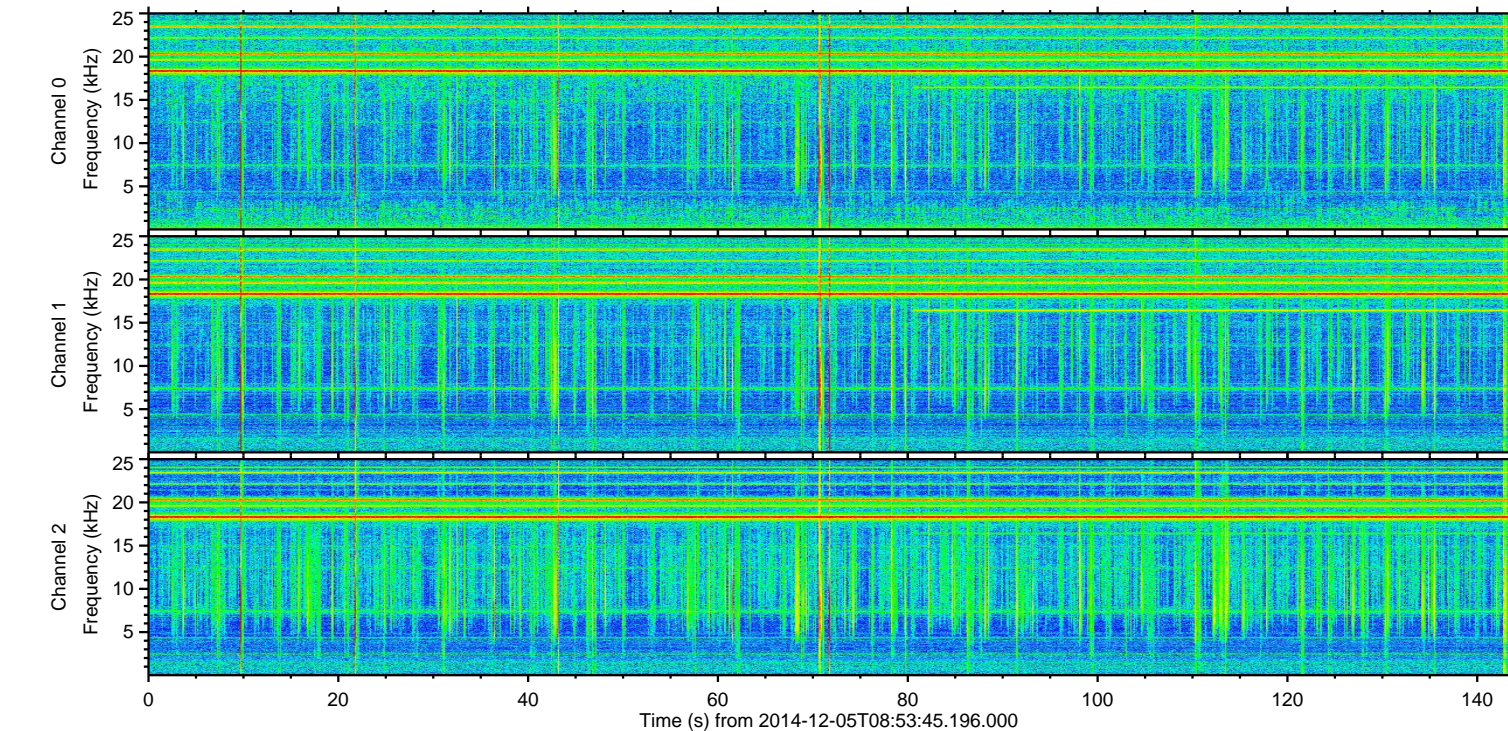
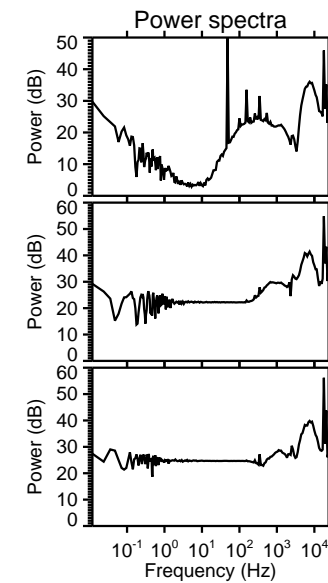
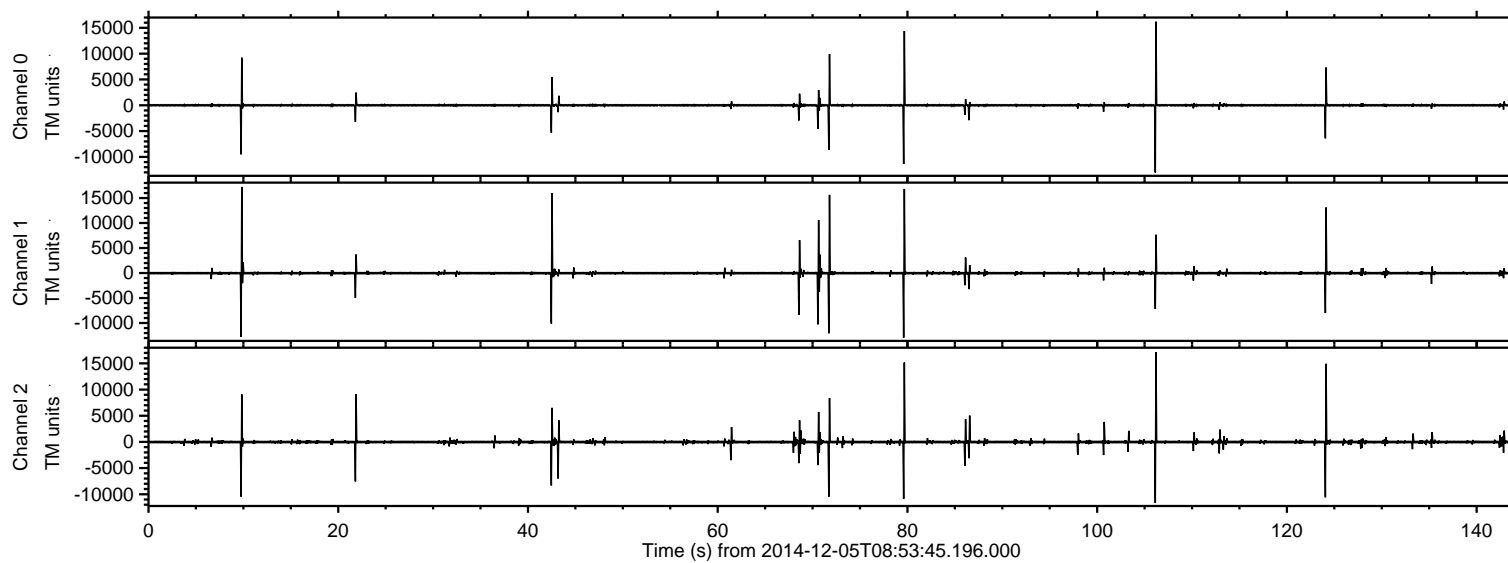
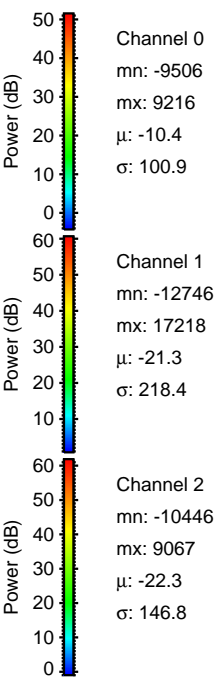
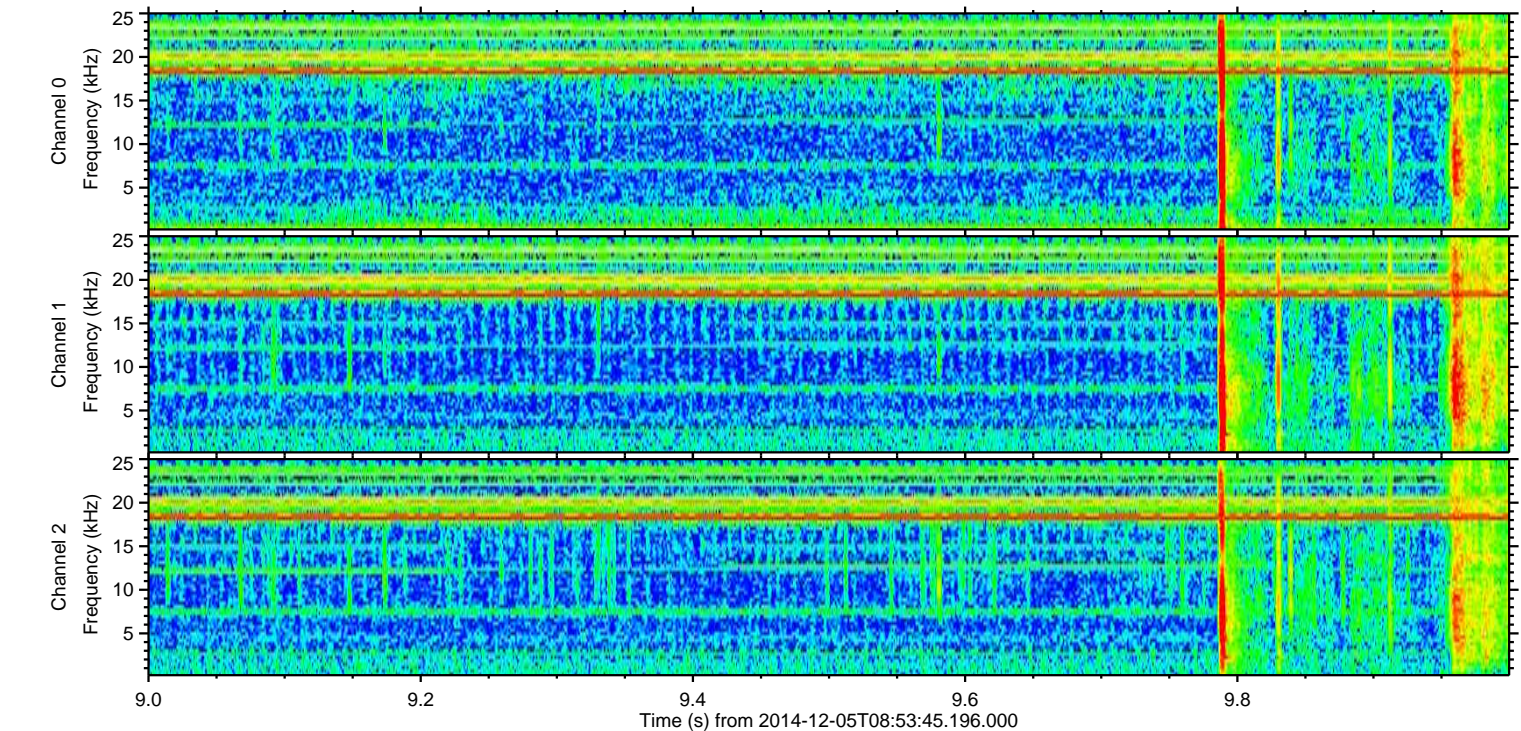
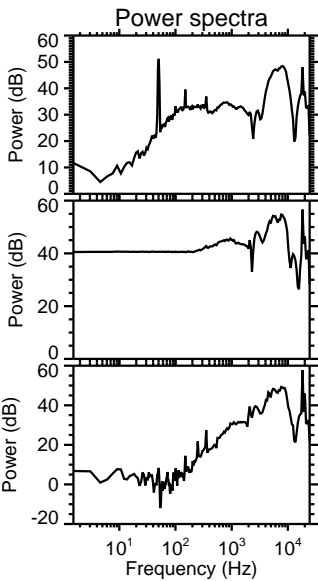
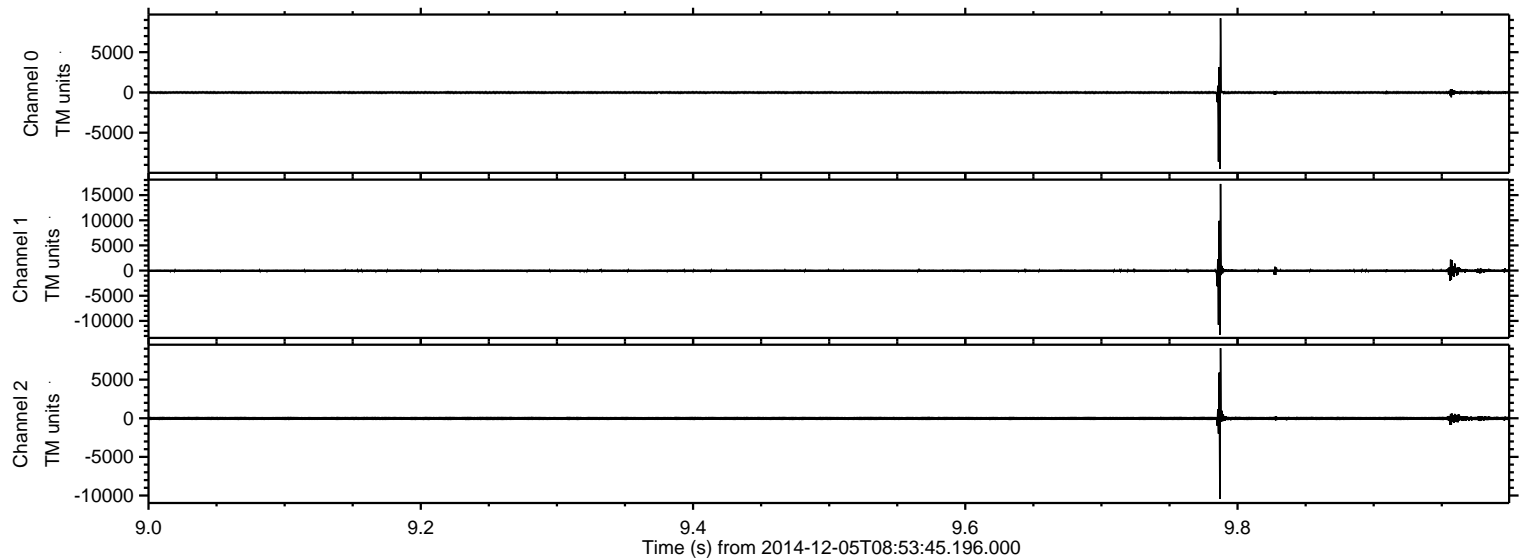


ELMAVAN 3D WAVEFORMS (Measured data sampled at 50 kHz) 49801 packets of 144 samples from 2014-12-05T08:53:45.196.000.

Processed Fri Dec 5 12:23:16 2014 by ELM ver.2012-10-06 from 001__elm20141205_085344__dat00.bin

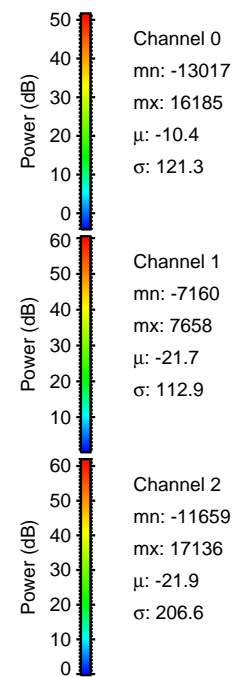
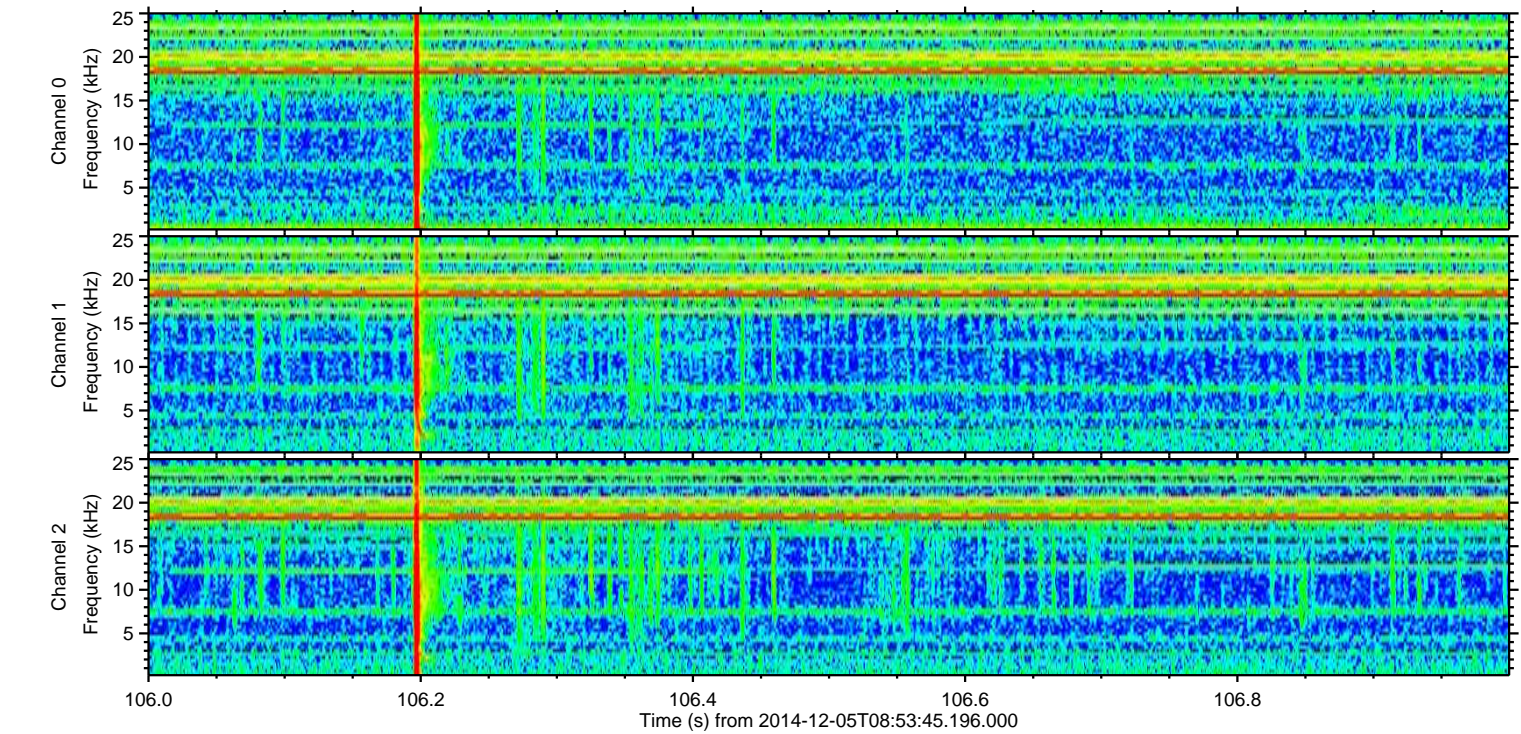
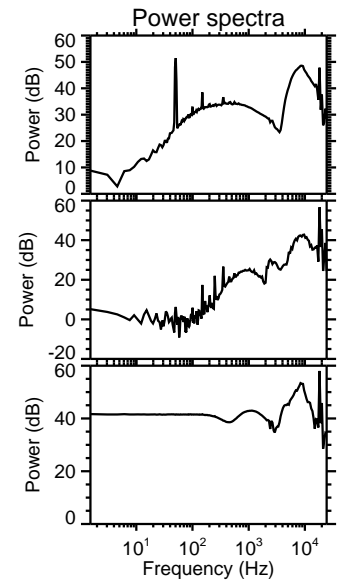
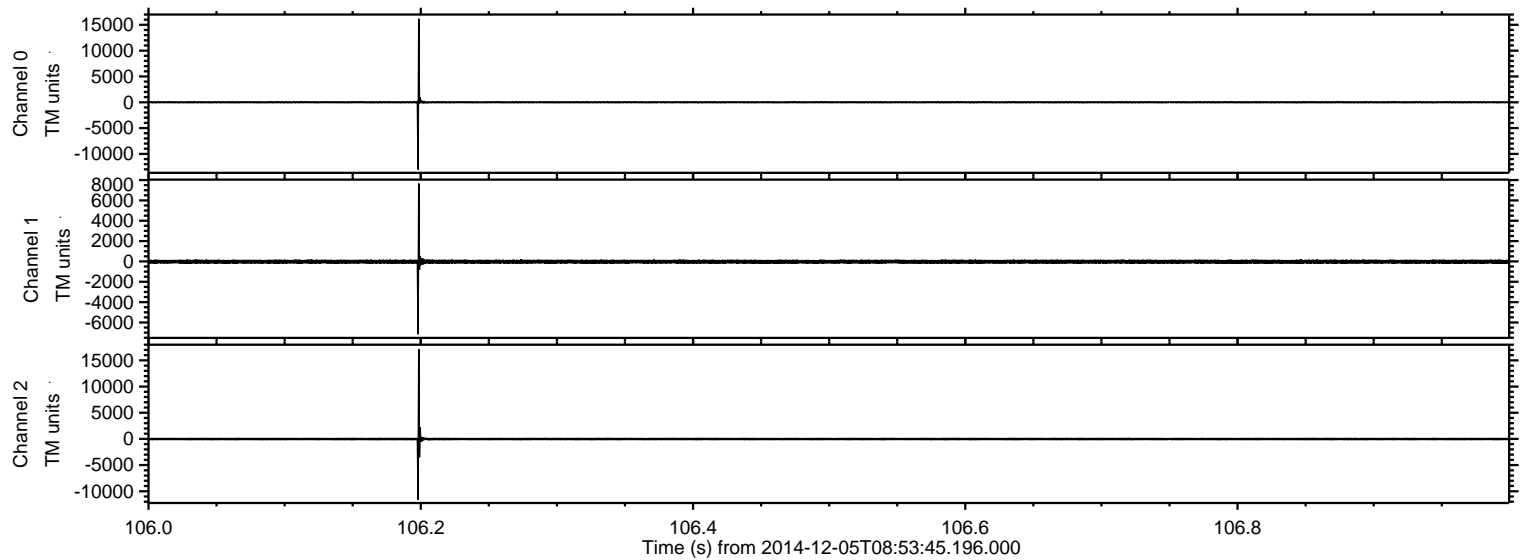


Processed Fri Dec 5 12:23:27 2014 by ELM ver.2012-10-06 from 001__elm20141205_085344__dat00.bin



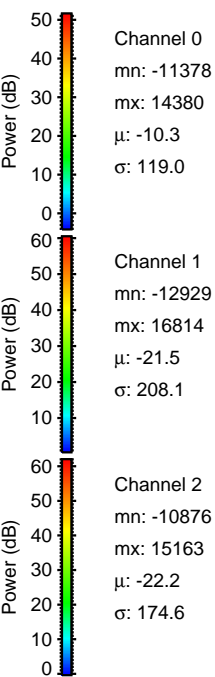
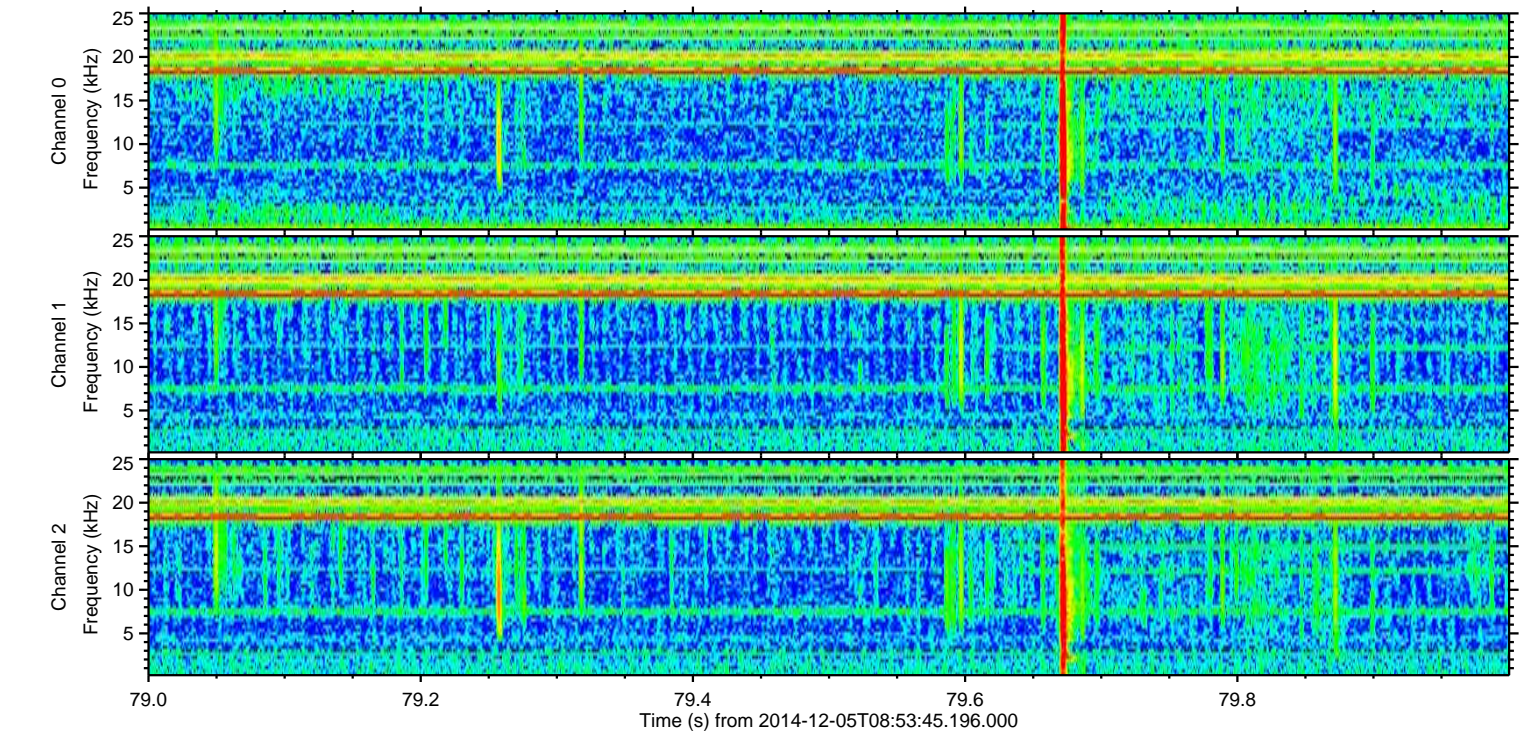
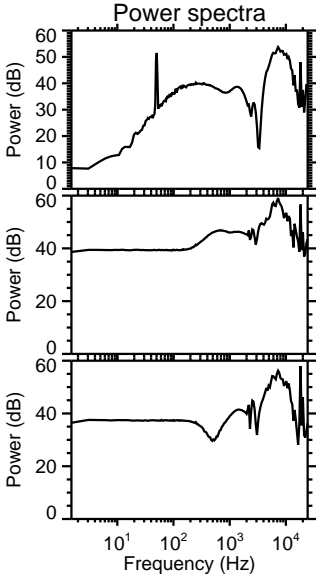
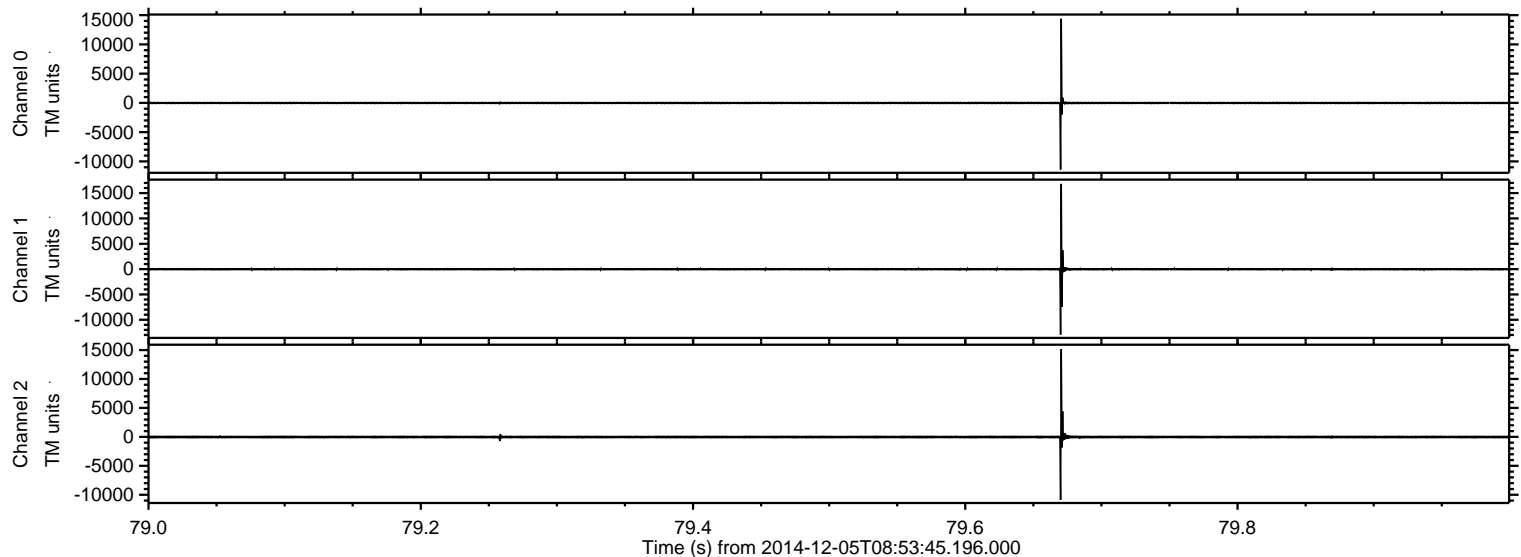
ELMAVAN 3D WAVEFORMS (Measured data sampled at 50 kHz) 49801 packets of 144 samples from 2014-12-05T08:53:45.196.000. Part 107/144

Processed Fri Dec 5 12:23:28 2014 by ELM ver.2012-10-06 from 001__elm20141205_085344__dat00.bin

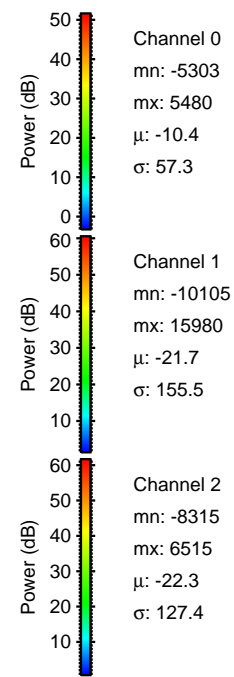
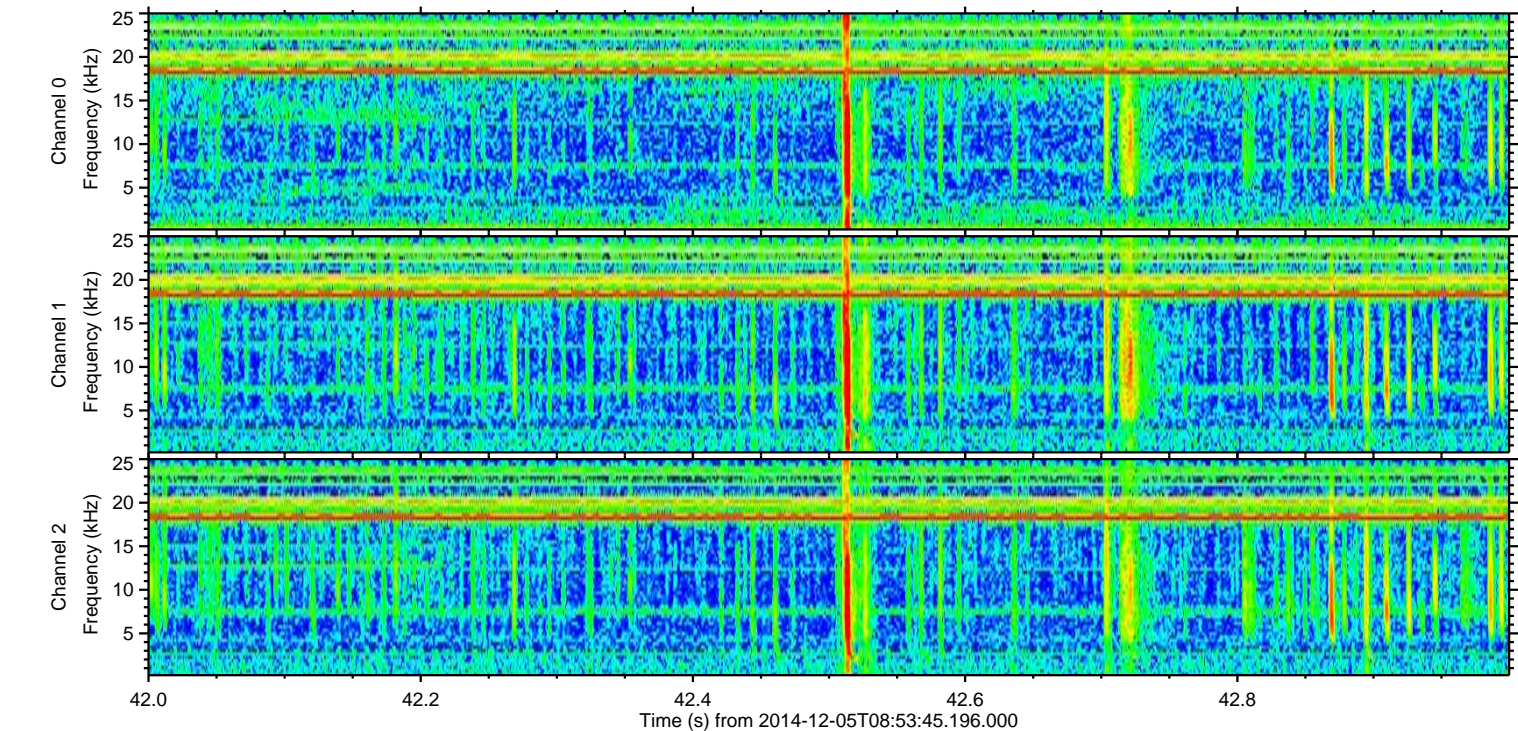
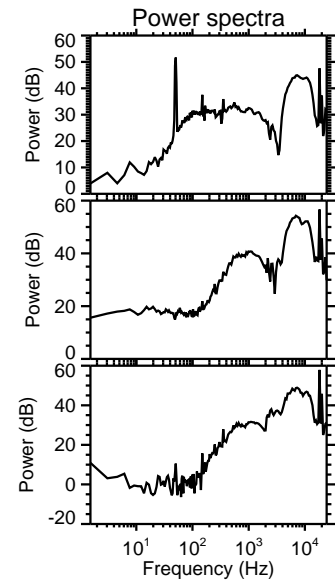
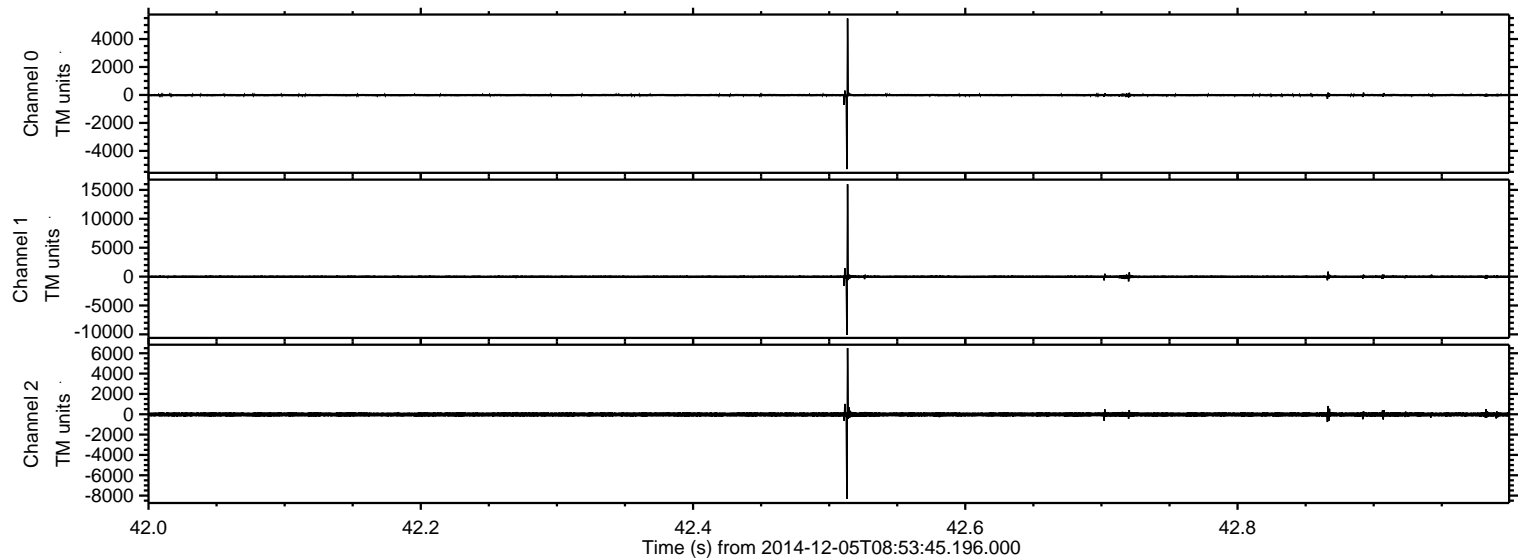


ELMAVAN 3D WAVEFORMS (Measured data sampled at 50 kHz) 49801 packets of 144 samples from 2014-12-05T08:53:45.196.000. Part 80/144

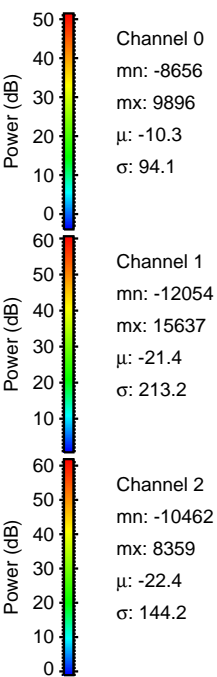
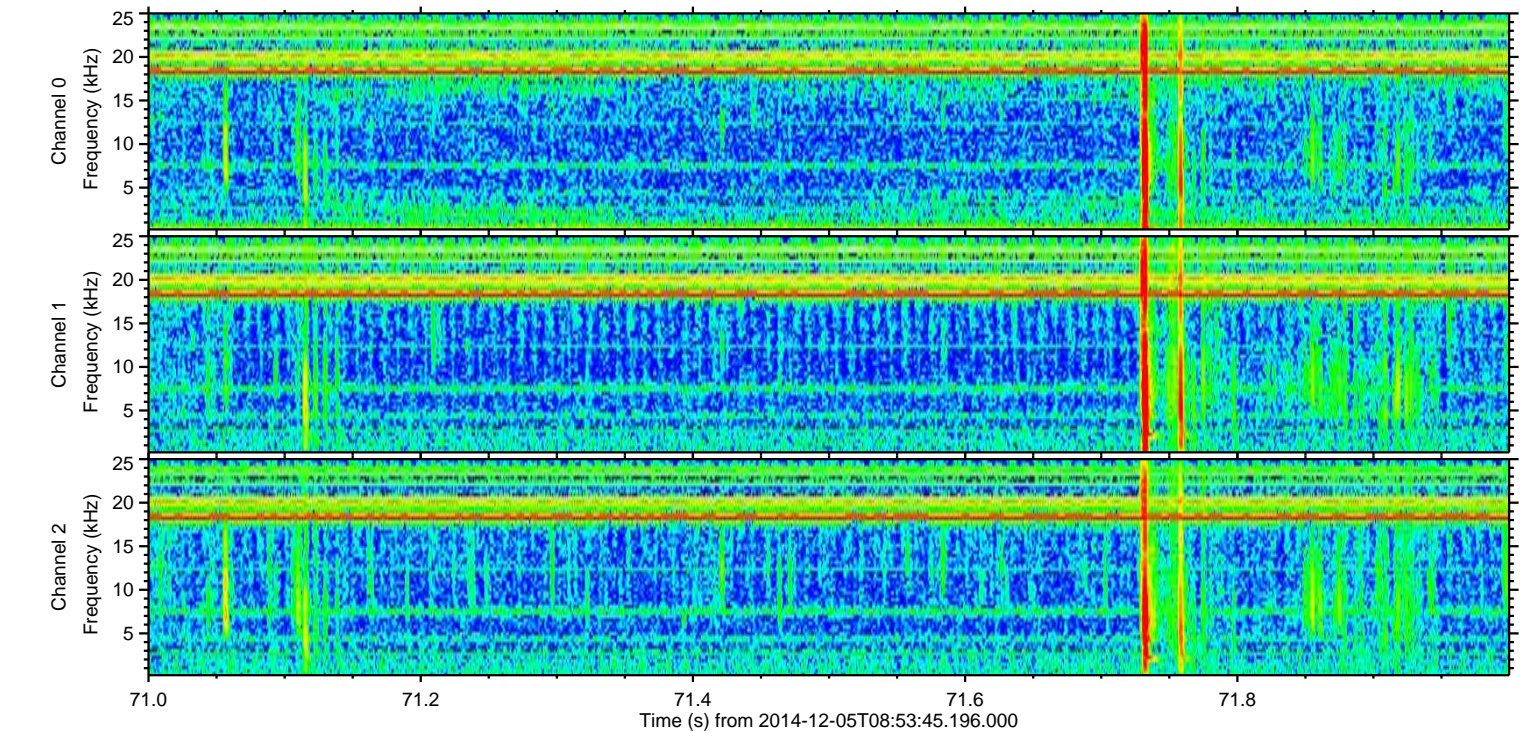
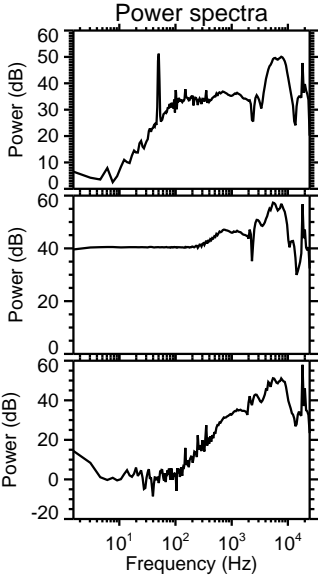
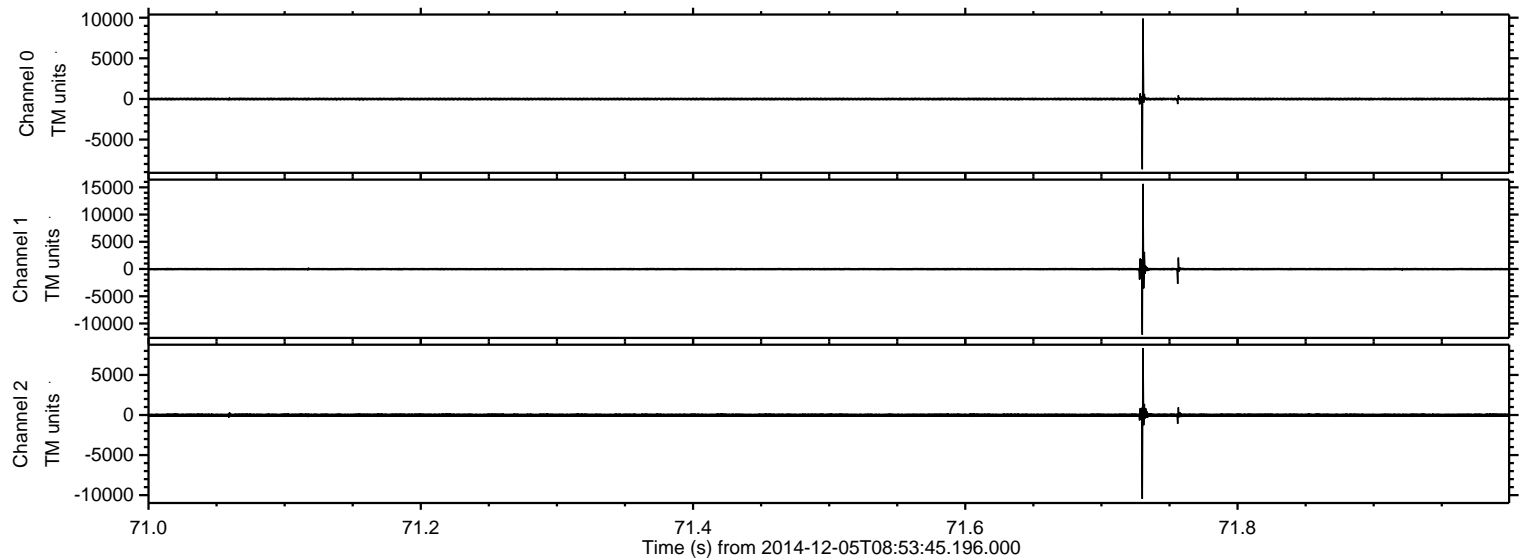
Processed Fri Dec 5 12:23:29 2014 by ELM ver.2012-10-06 from 001__elm20141205_085344__dat00.bin



Processed Fri Dec 5 12:23:30 2014 by ELM ver.2012-10-06 from 001__elm20141205_085344__dat00.bin

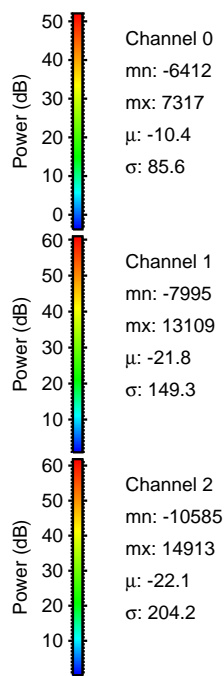
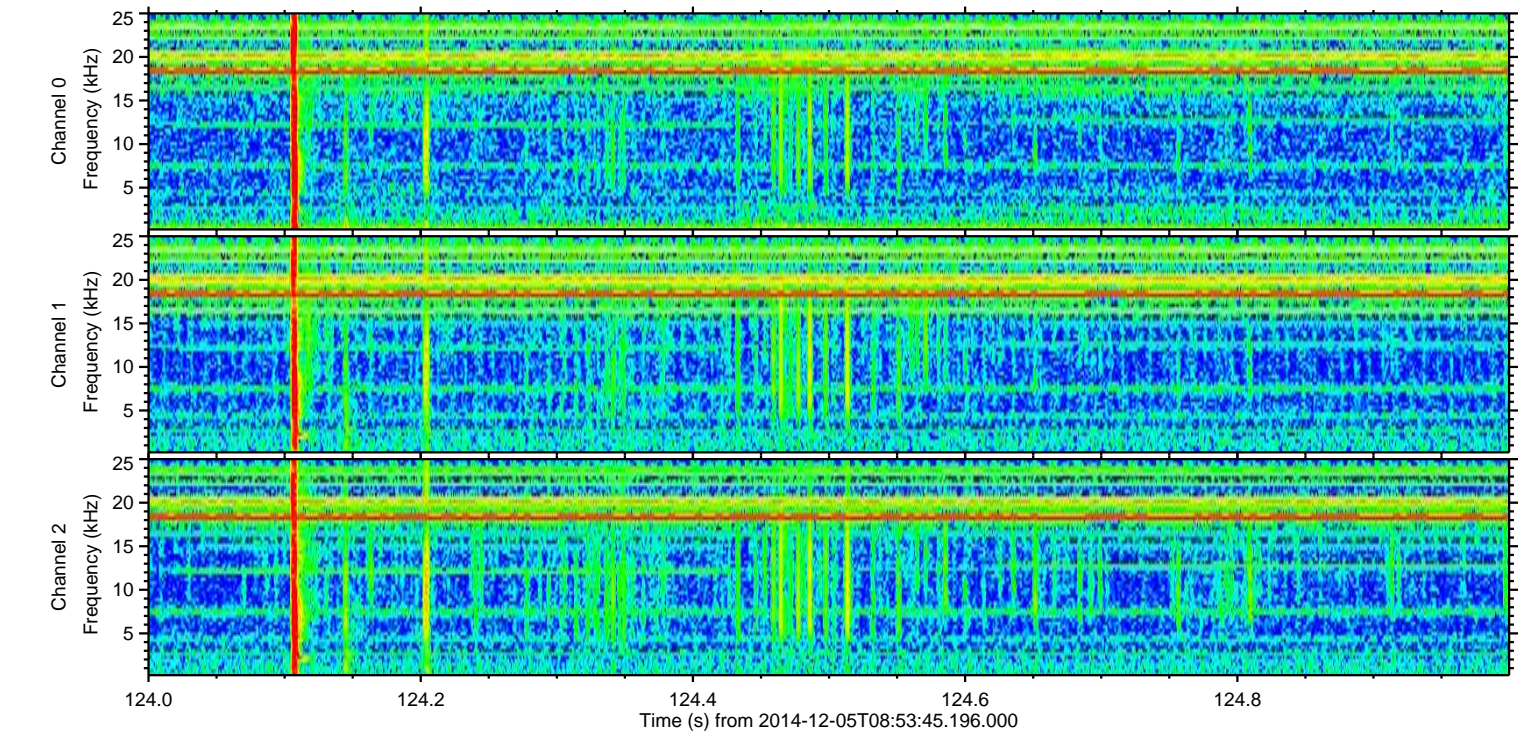
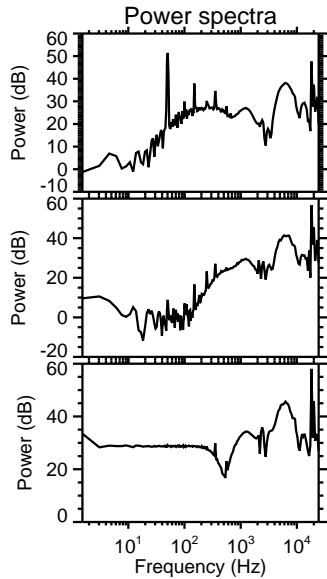
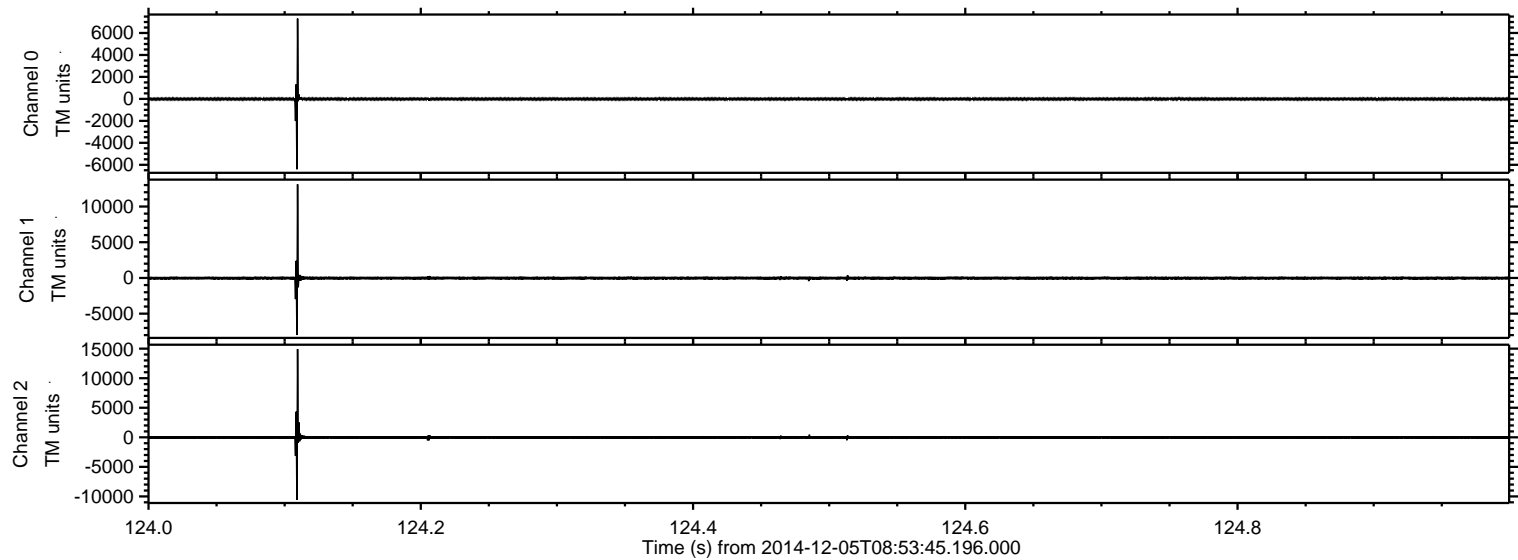


Processed Fri Dec 5 12:23:31 2014 by ELM ver.2012-10-06 from 001__elm20141205_085344__dat00.bin

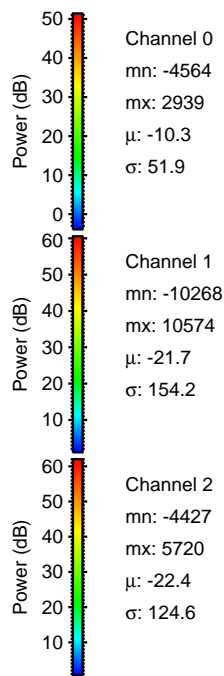
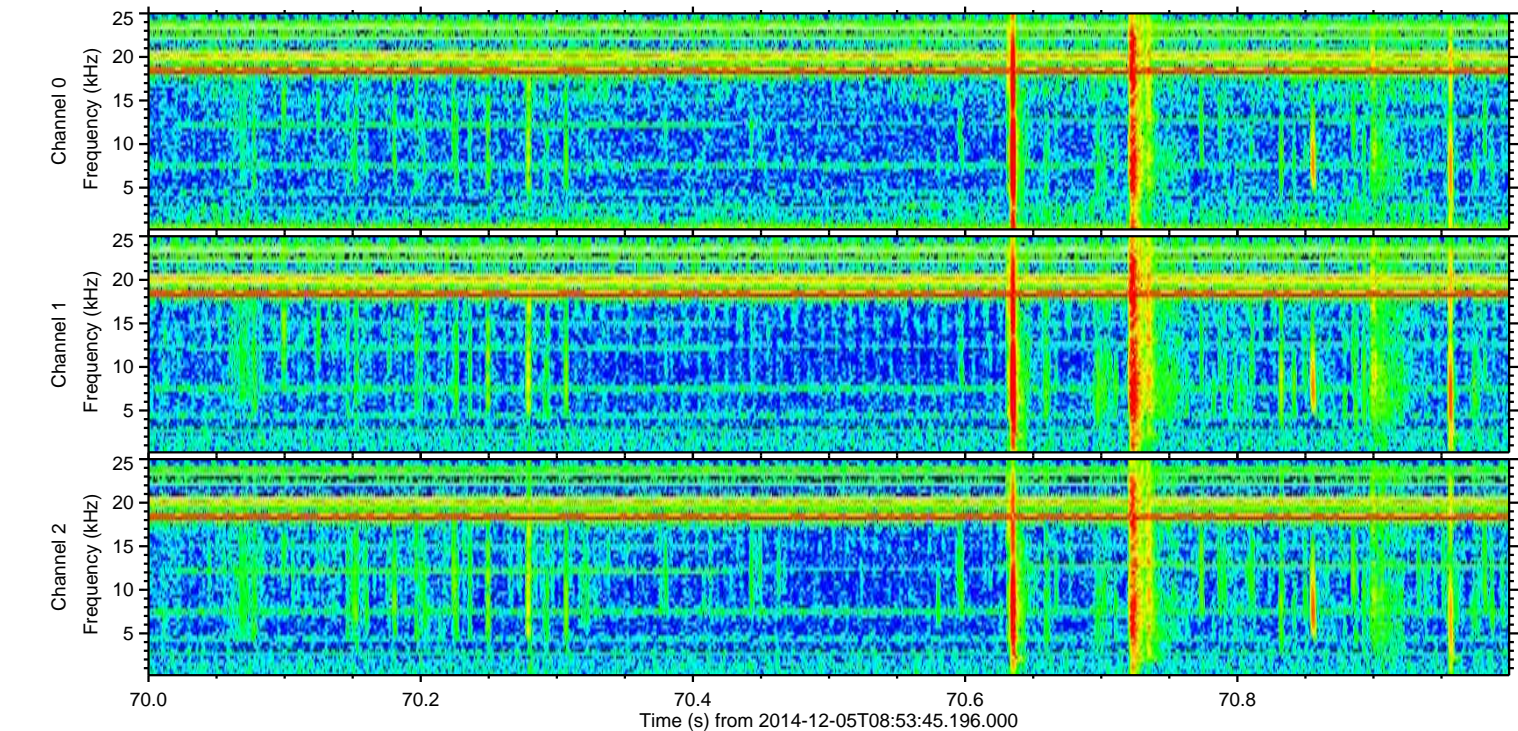
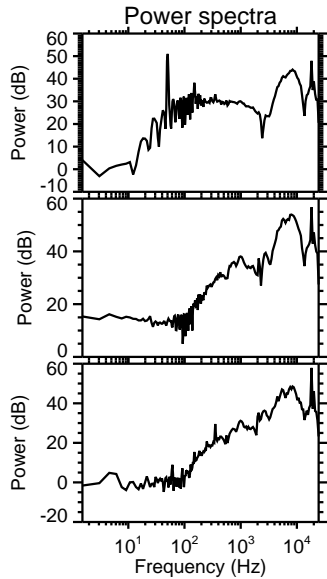
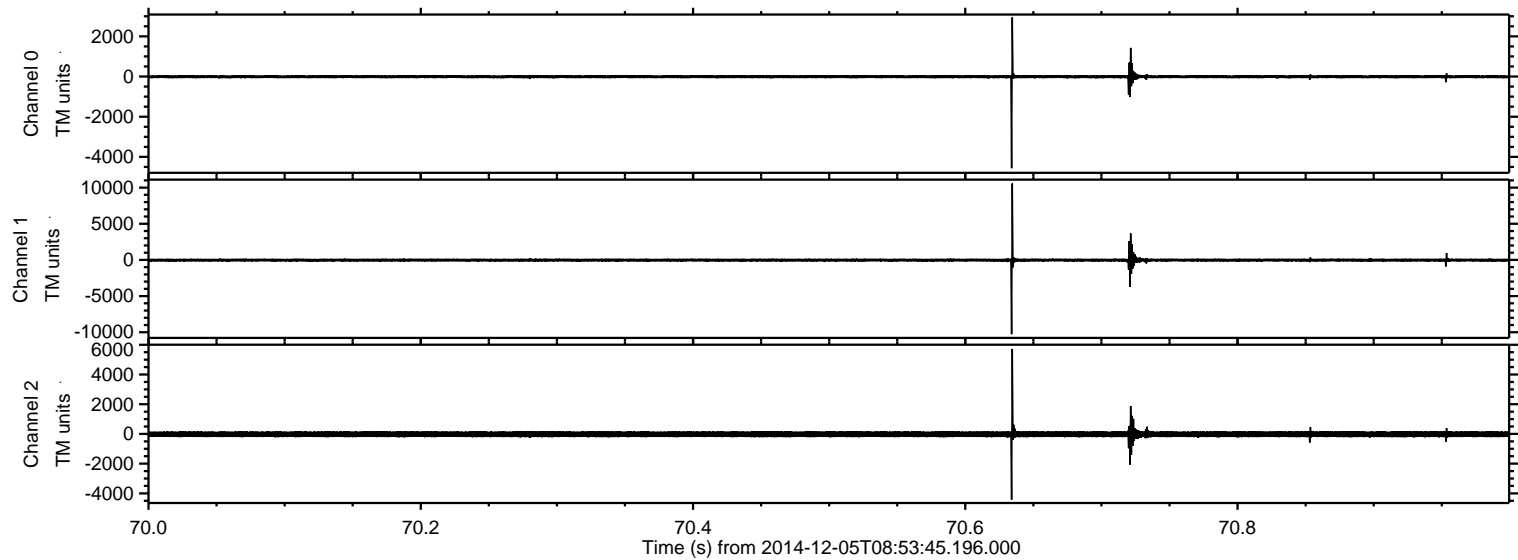


ELMAVAN 3D WAVEFORMS (Measured data sampled at 50 kHz) 49801 packets of 144 samples from 2014-12-05T08:53:45.196.000. Part 125/144

Processed Fri Dec 5 12:23:32 2014 by ELM ver.2012-10-06 from 001__elm20141205_085344__dat00.bin

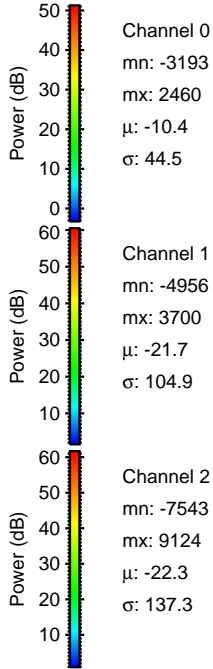
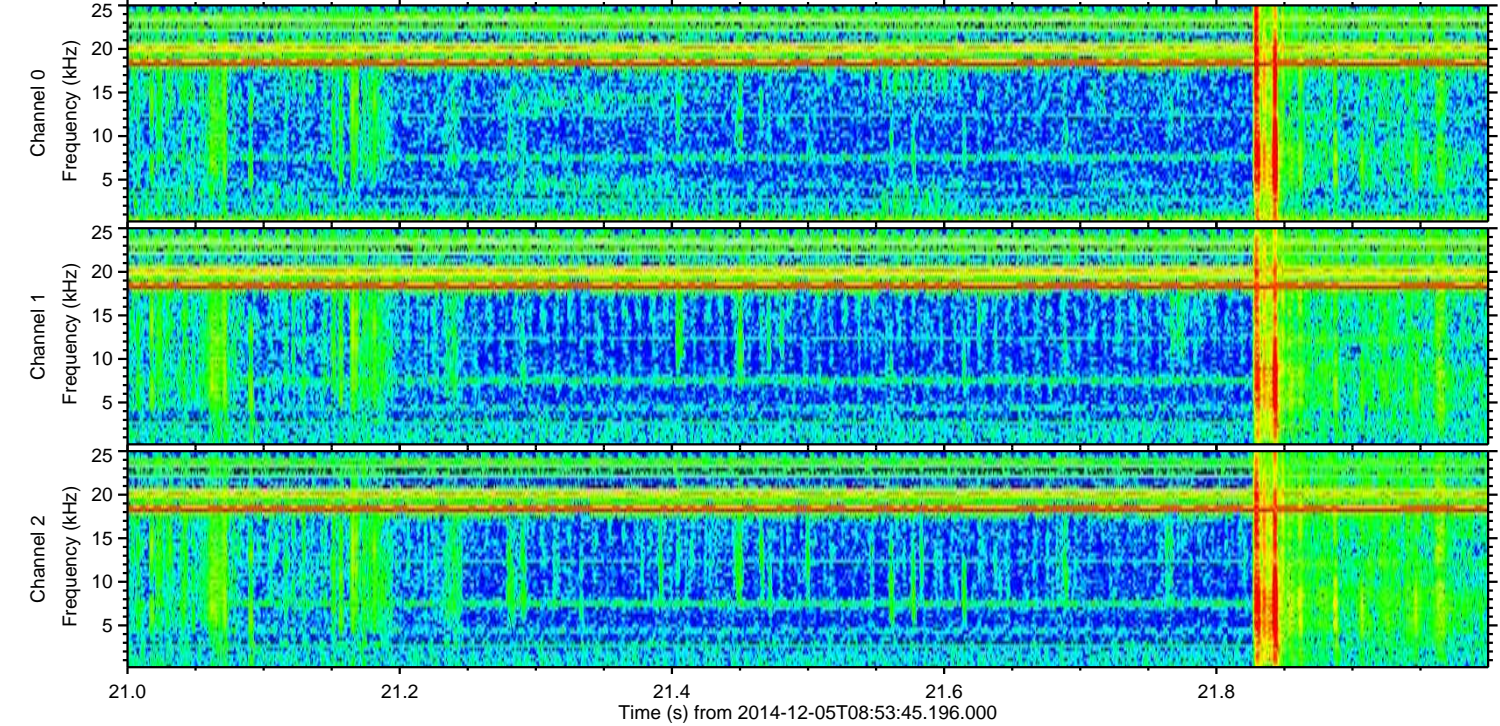
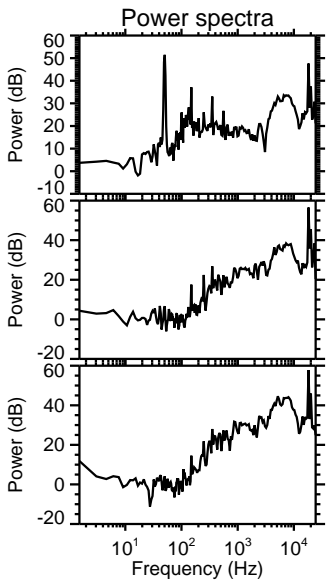
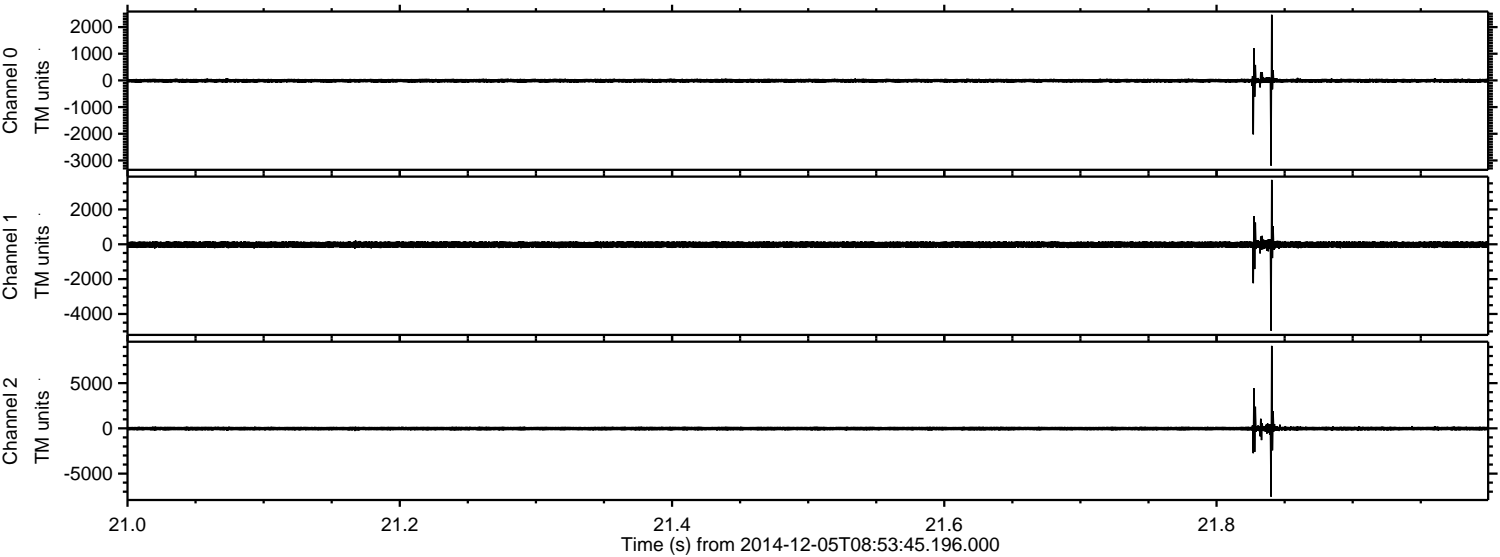


Processed Fri Dec 5 12:23:33 2014 by ELM ver.2012-10-06 from 001__elm20141205_085344__dat00.bin

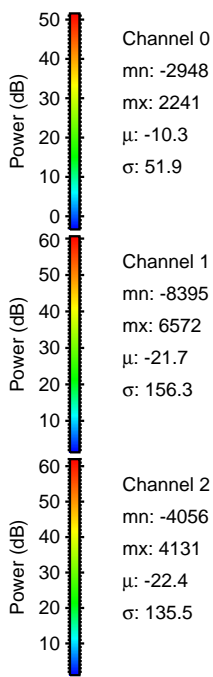
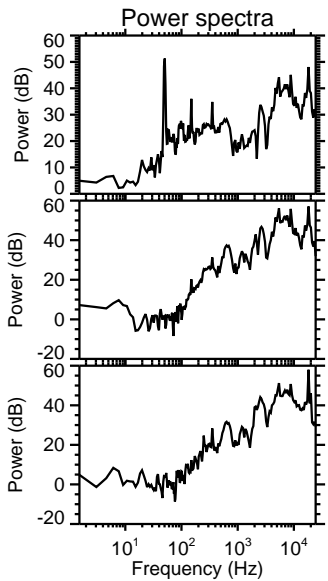
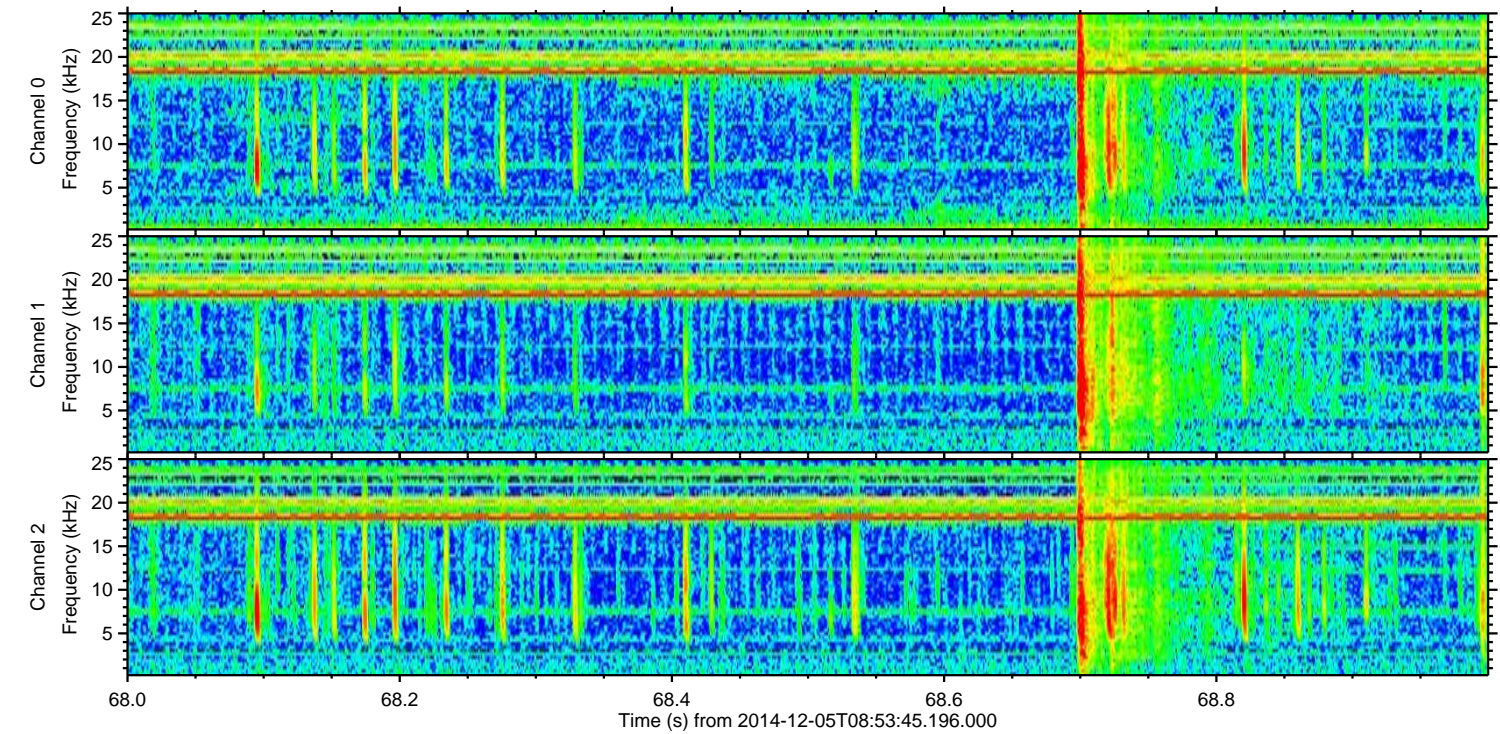
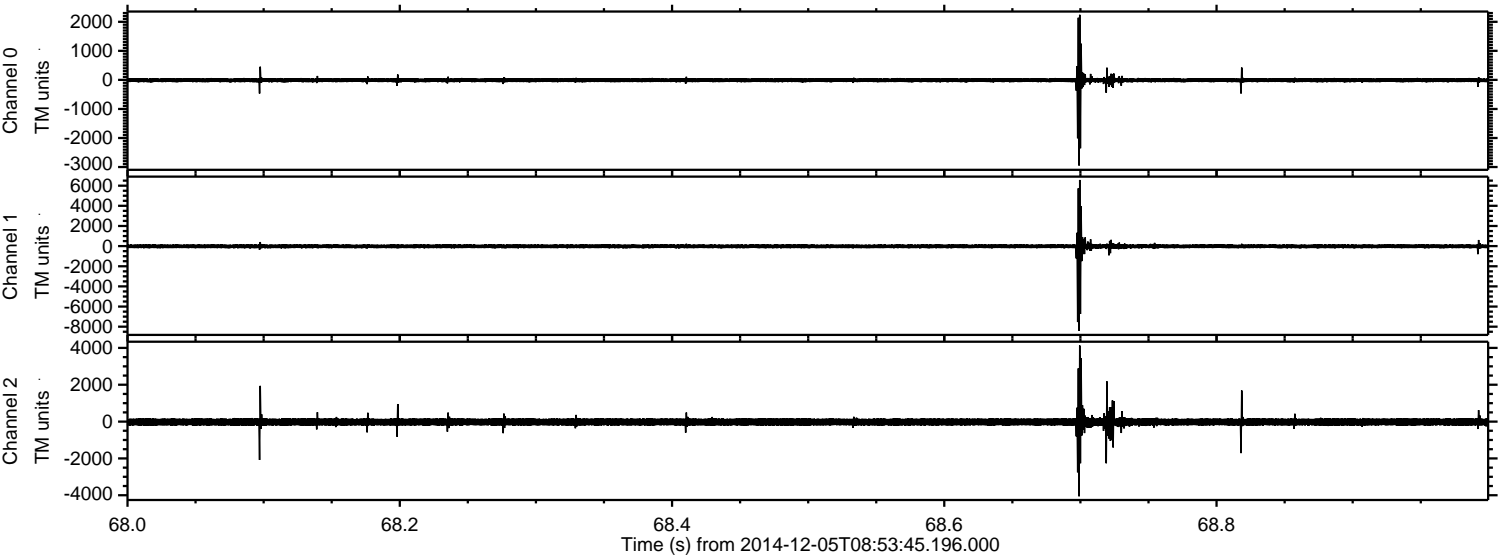


ELMAVAN 3D WAVEFORMS (Measured data sampled at 50 kHz) 49801 packets of 144 samples from 2014-12-05T08:53:45.196.000. Part 22/144

Processed Fri Dec 5 12:23:34 2014 by ELM ver.2012-10-06 from 001__elm20141205_085344__dat00.bin



Processed Fri Dec 5 12:23:35 2014 by ELM ver.2012-10-06 from 001__elm20141205_085344__dat00.bin



Channel 0
mn: -2948
mx: 2241
 μ : -10.3
 σ : 51.9

Channel 1
mn: -8395
mx: 6572
 μ : -21.7
 σ : 156.3

Channel 2
mn: -4056
mx: 4131
 μ : -22.4
 σ : 135.5

Processed Fri Dec 5 12:23:36 2014 by ELM ver.2012-10-06 from 001__elm20141205_085344__dat00.bin

