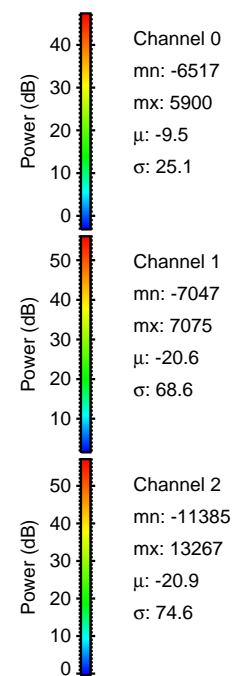
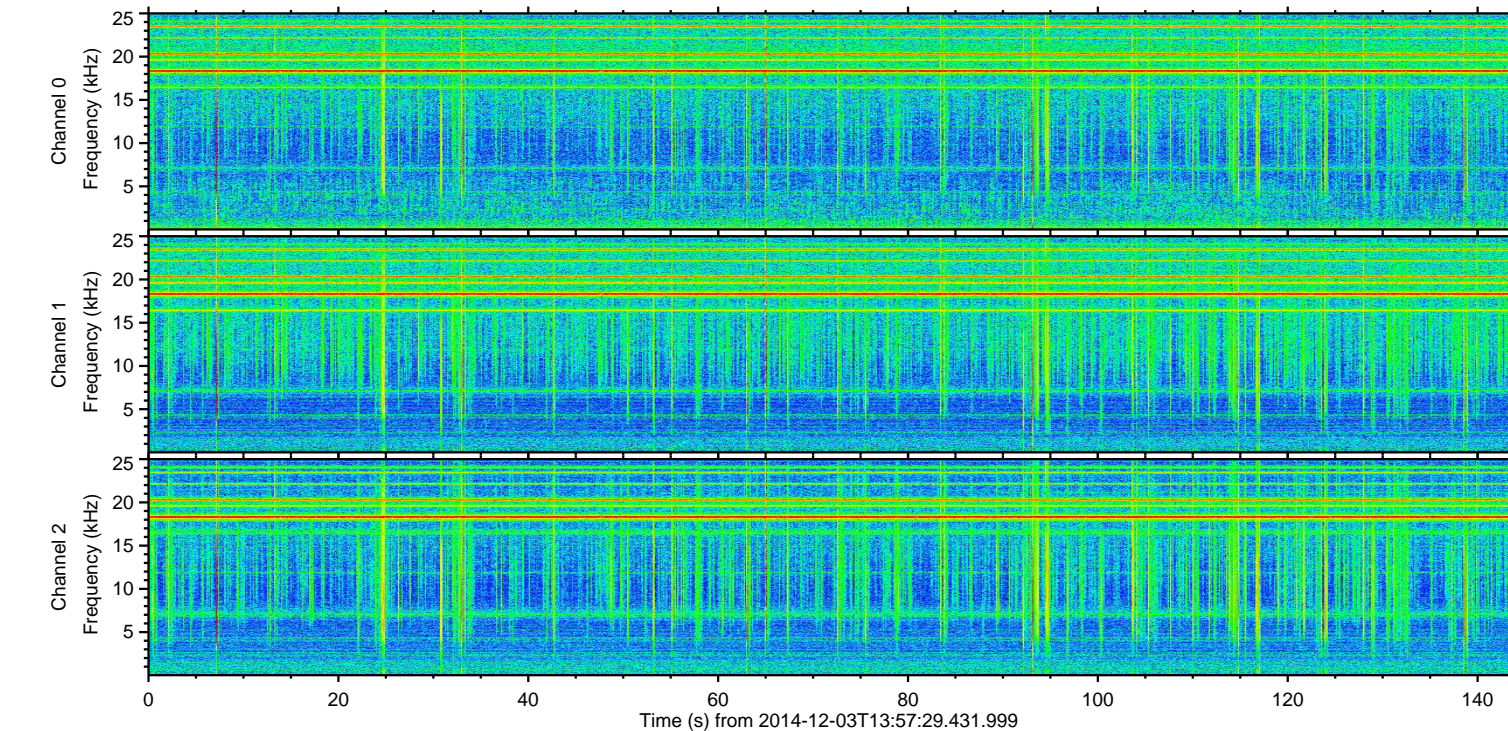
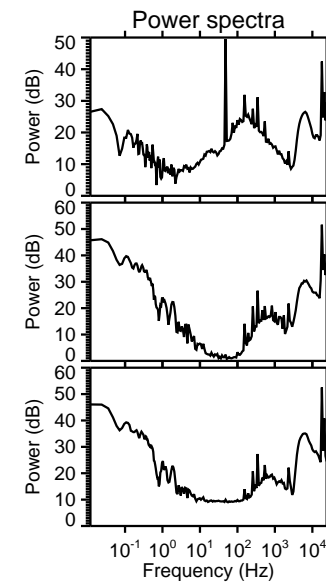
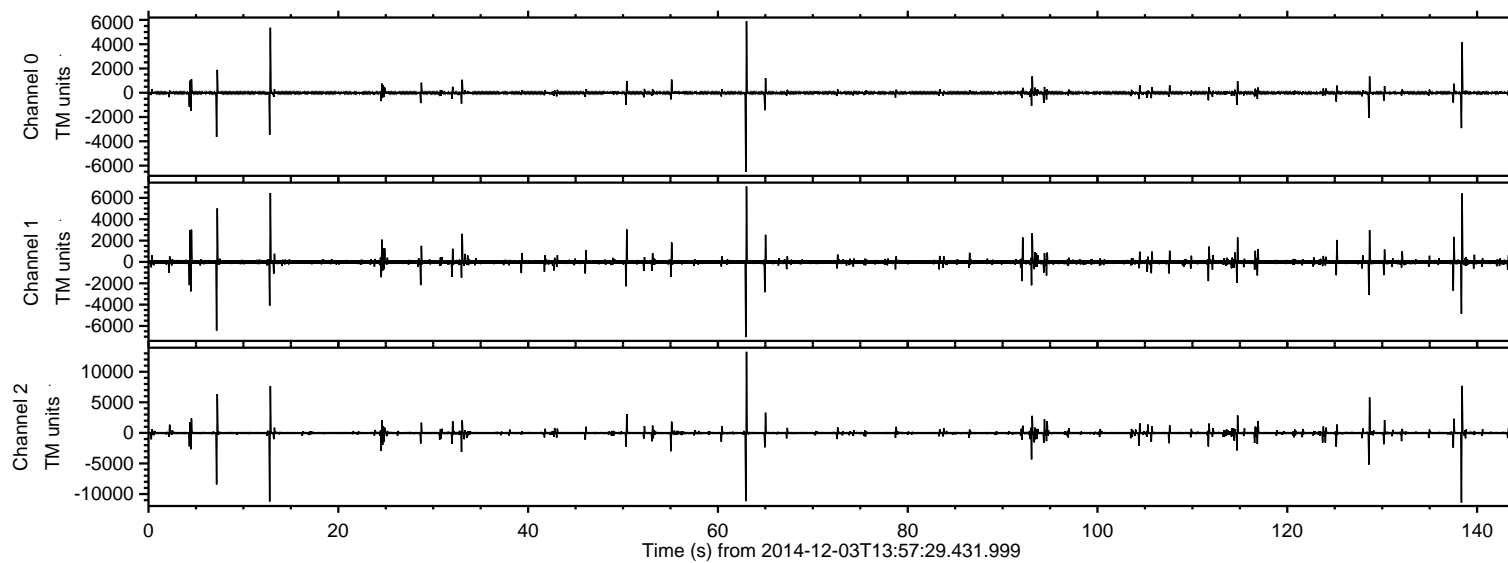
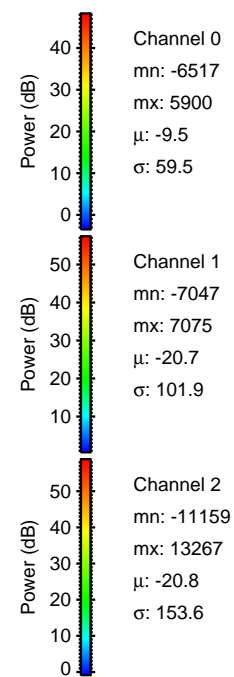
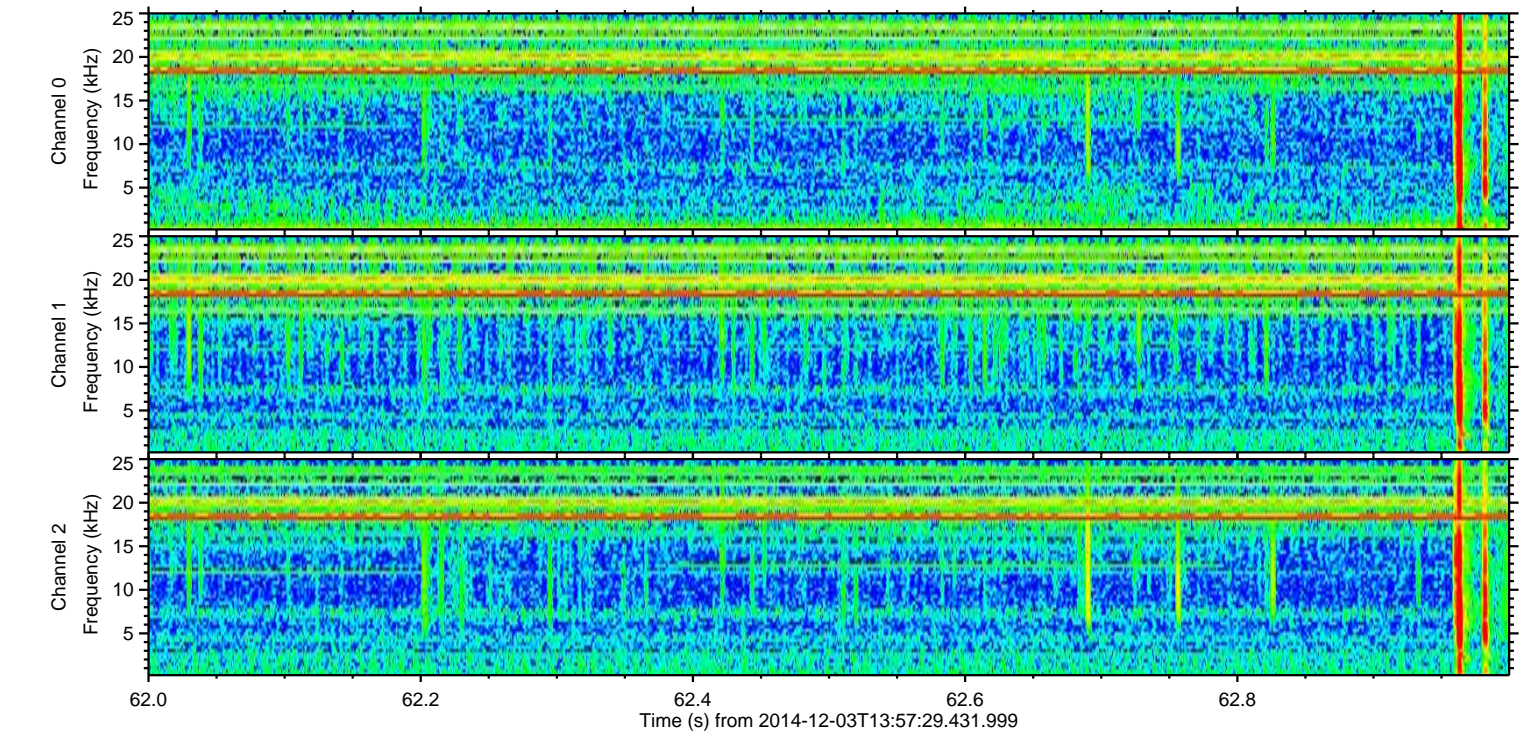
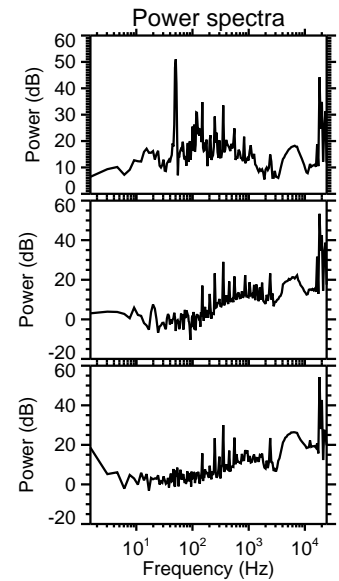
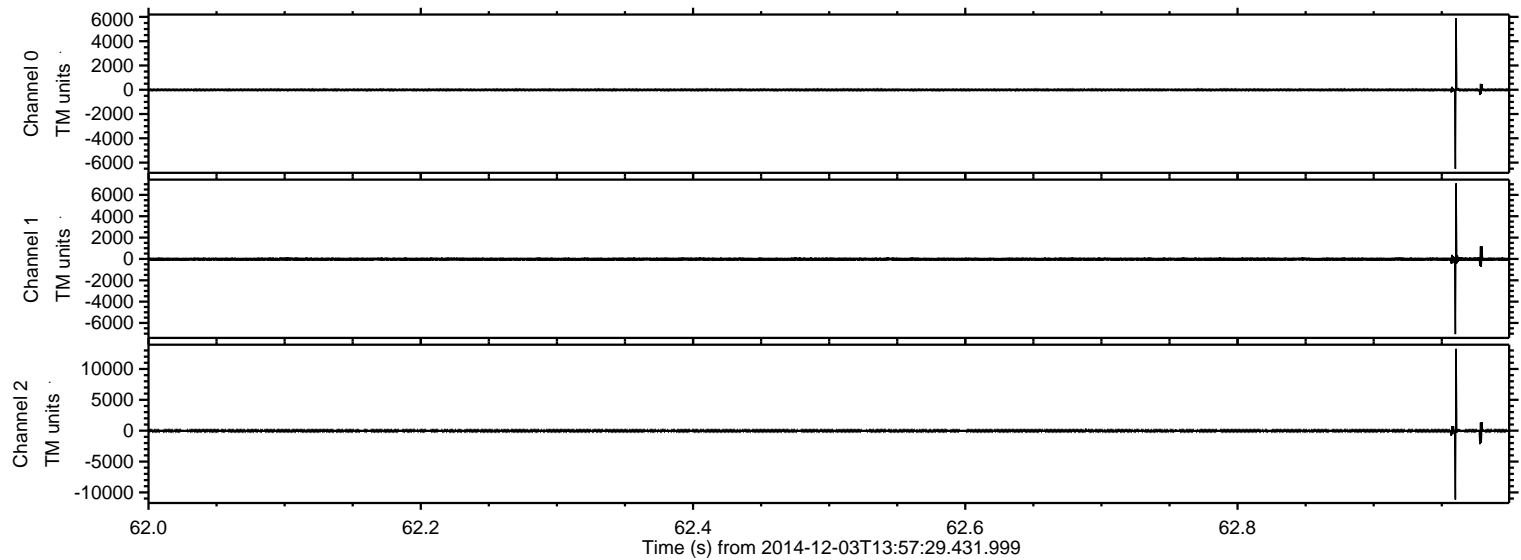


ELMAVAN 3D WAVEFORMS (Measured data sampled at 50 kHz) 49783 packets of 144 samples from 2014-12-03T13:57:29.431.999.

Processed Wed Dec 3 15:04:33 2014 by ELM ver.2012-10-06 from 001__elm20141203_135728__dat00.bin

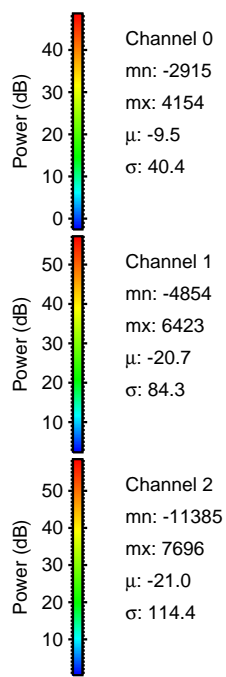
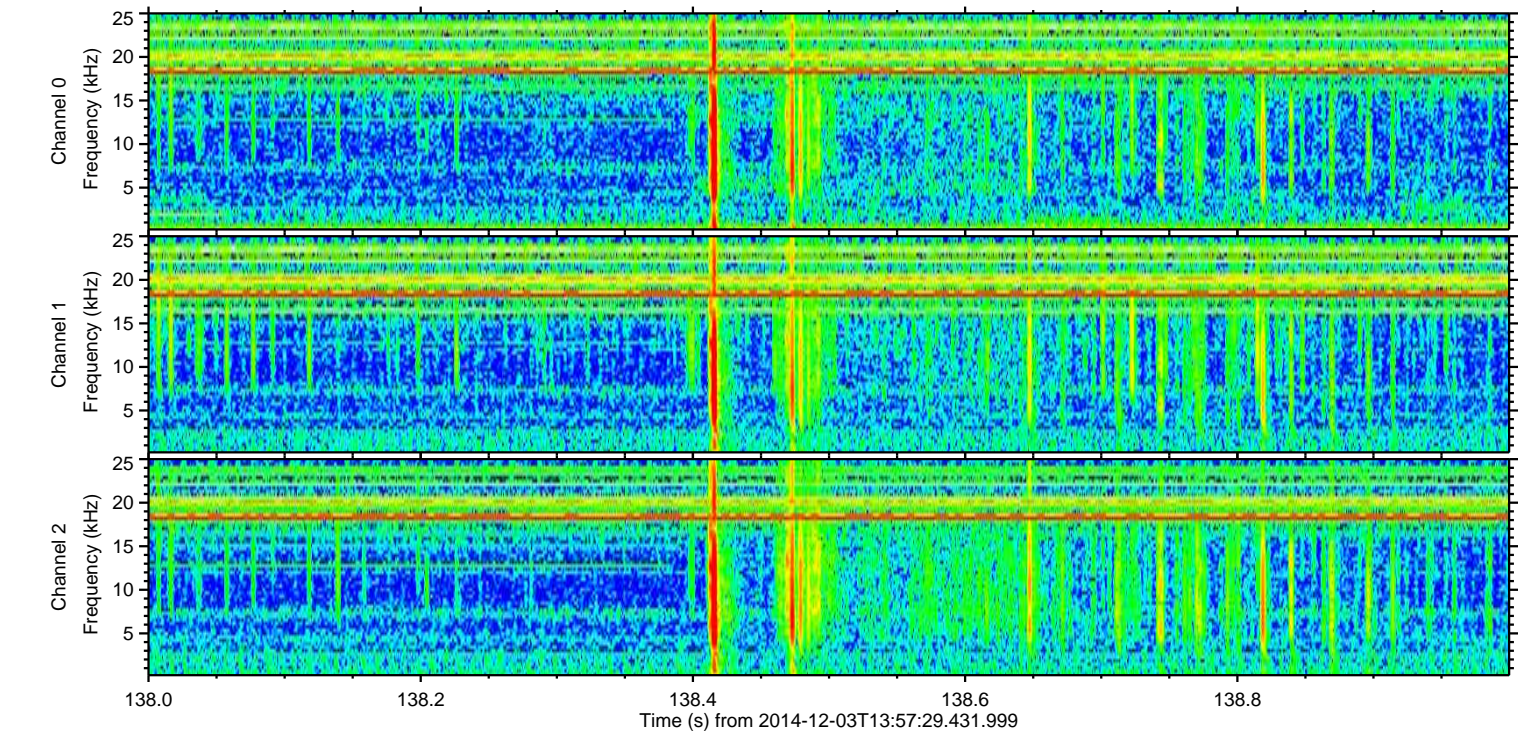
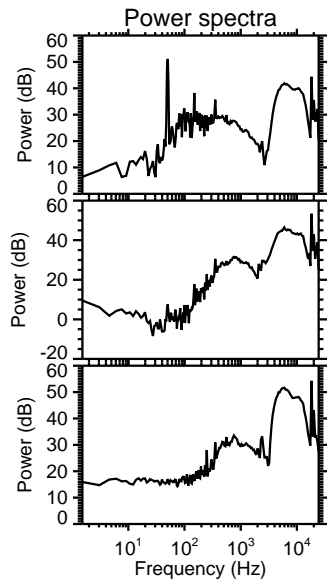
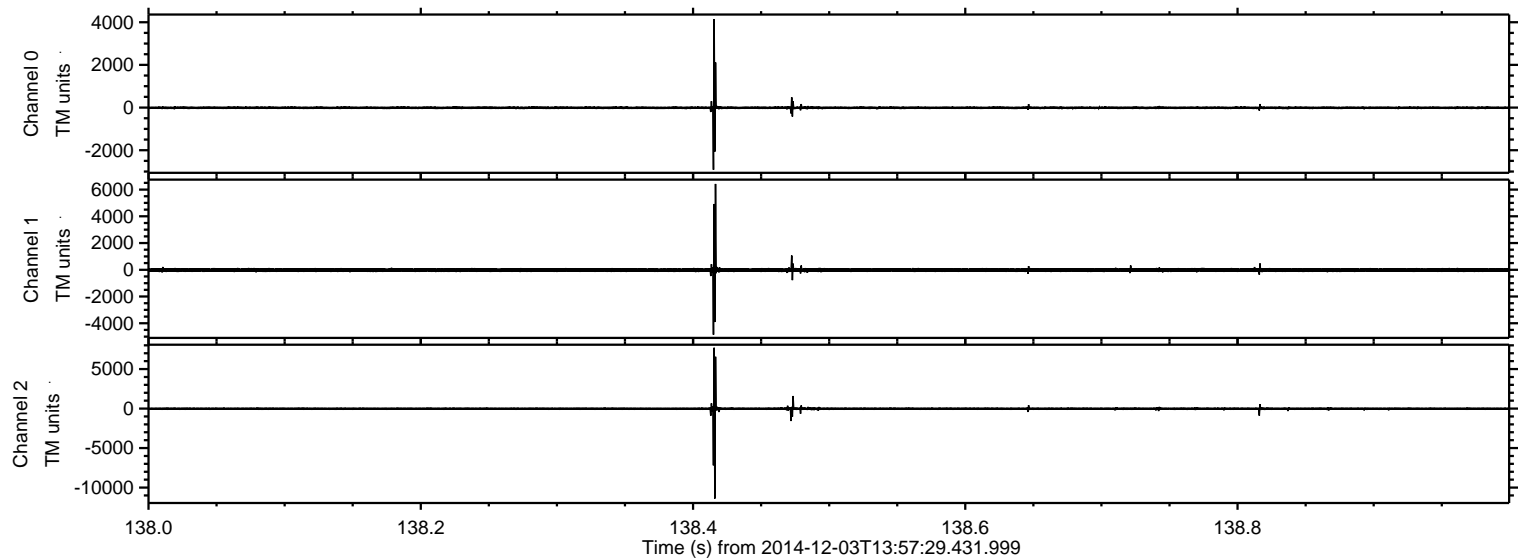


Processed Wed Dec 3 15:04:45 2014 by ELM ver.2012-10-06 from 001__elm20141203_135728__dat00.bin



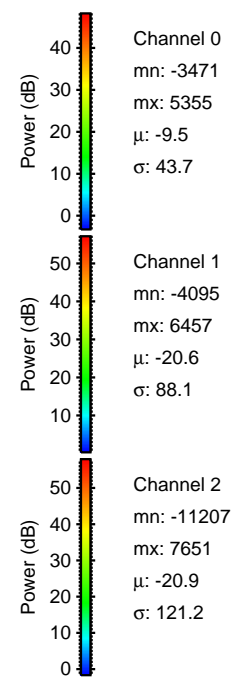
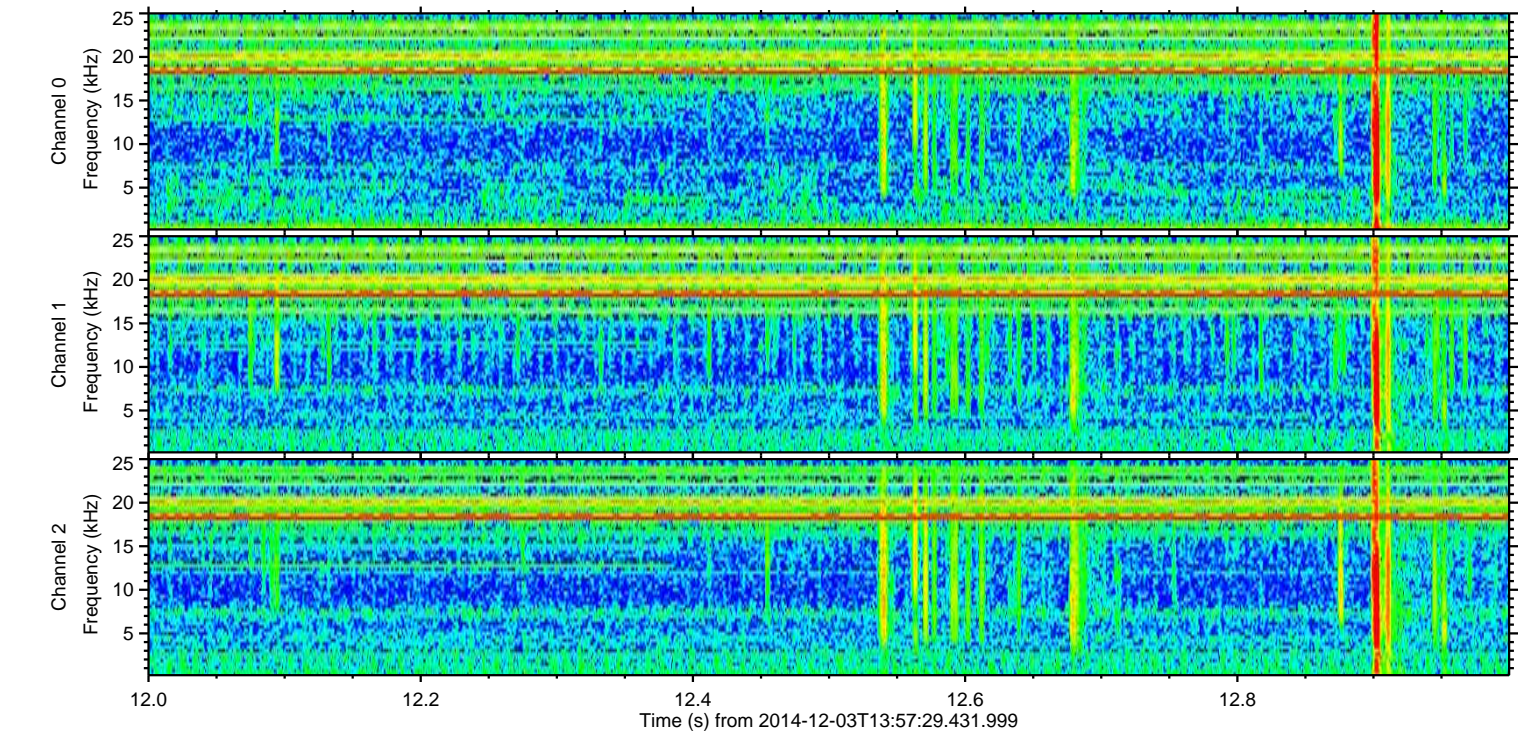
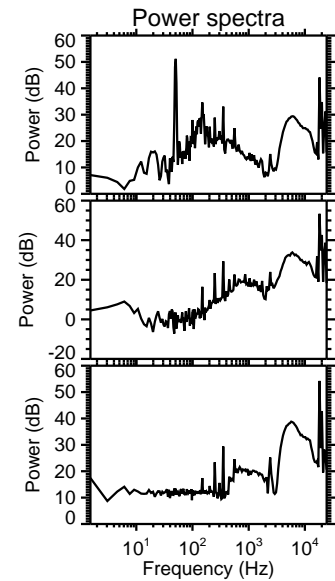
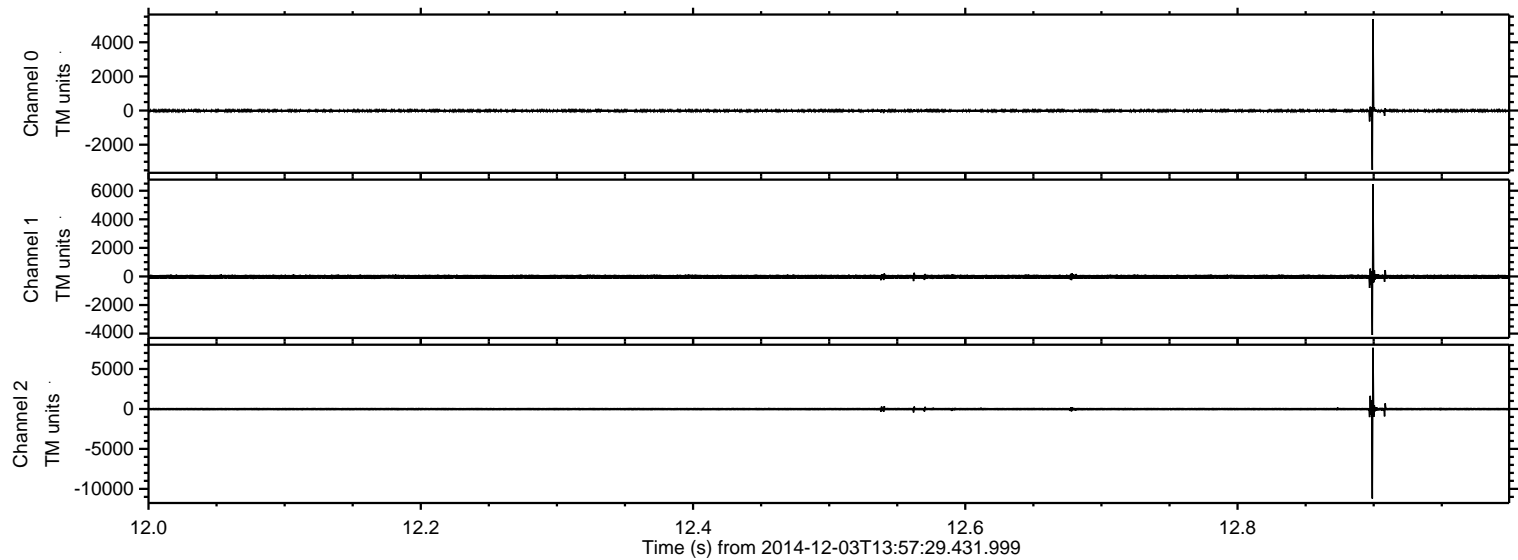
ELMAVAN 3D WAVEFORMS (Measured data sampled at 50 kHz) 49783 packets of 144 samples from 2014-12-03T13:57:29.431.999. Part 139/144

Processed Wed Dec 3 15:04:46 2014 by ELM ver.2012-10-06 from 001__elm20141203_135728__dat00.bin

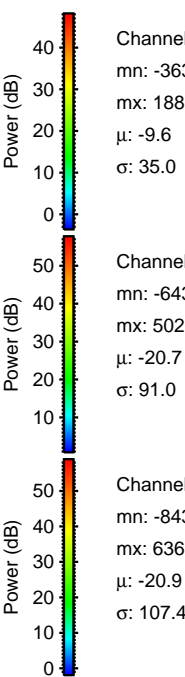
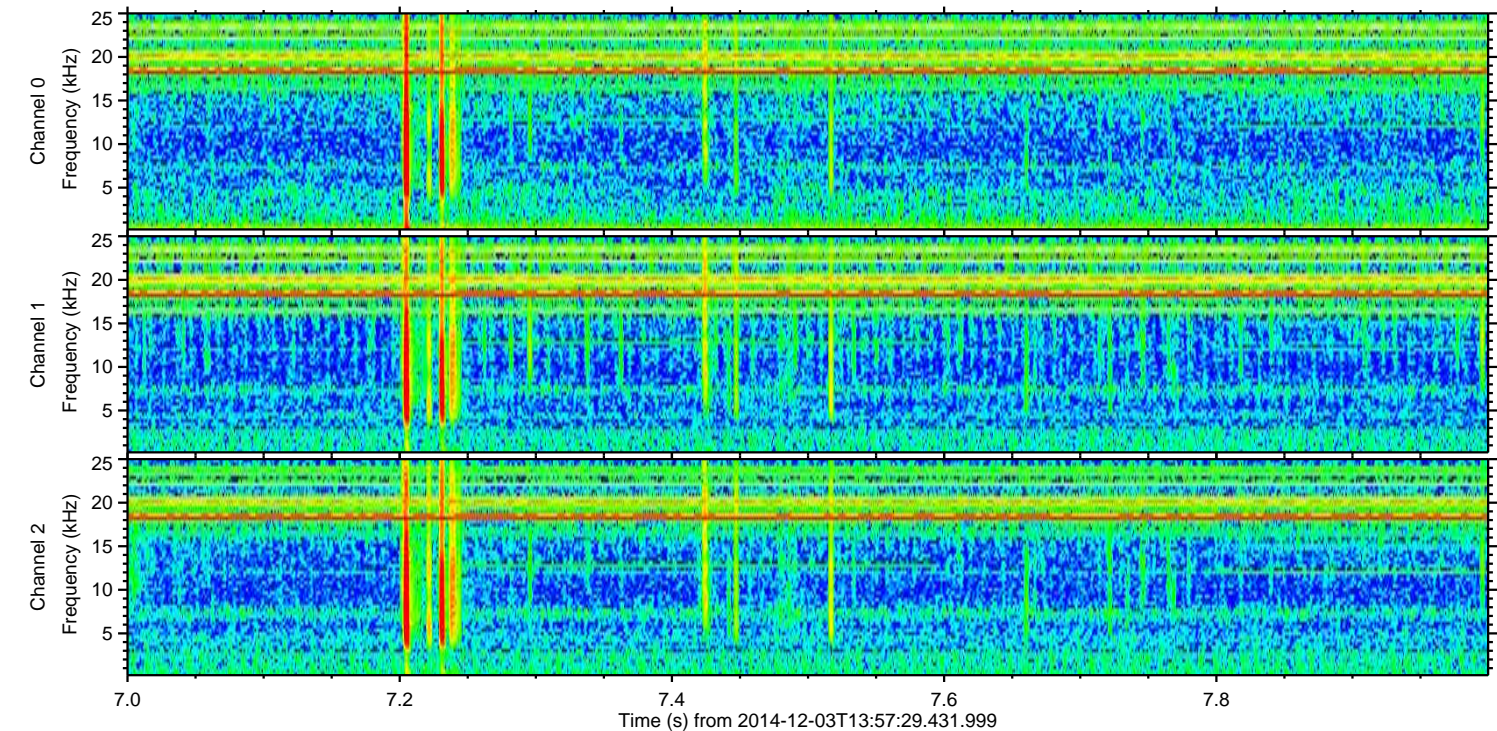
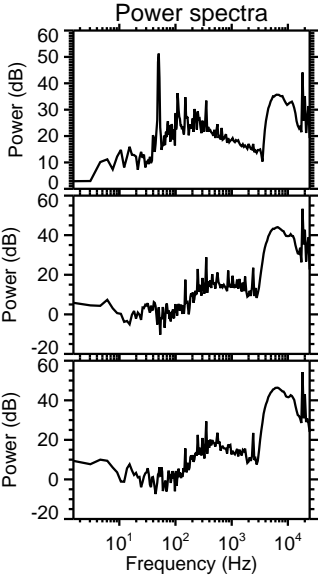
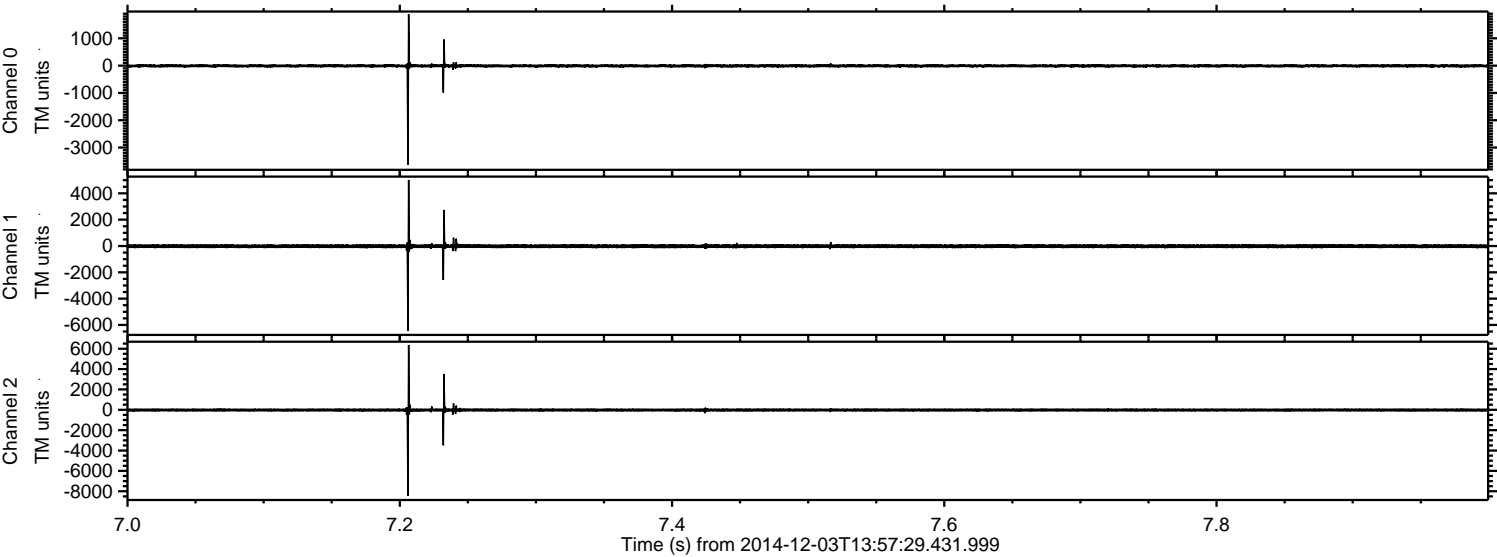


ELMAVAN 3D WAVEFORMS (Measured data sampled at 50 kHz) 49783 packets of 144 samples from 2014-12-03T13:57:29.431.999. Part 13/144

Processed Wed Dec 3 15:04:47 2014 by ELM ver.2012-10-06 from 001__elm20141203_135728__dat00.bin



Processed Wed Dec 3 15:04:48 2014 by ELM ver.2012-10-06 from 001__elm20141203_135728__dat00.bin



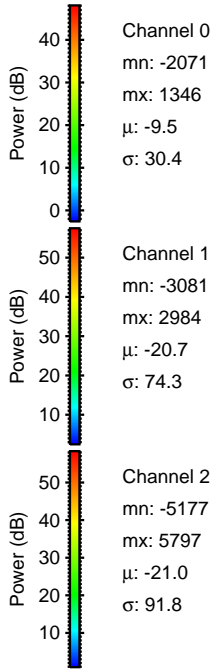
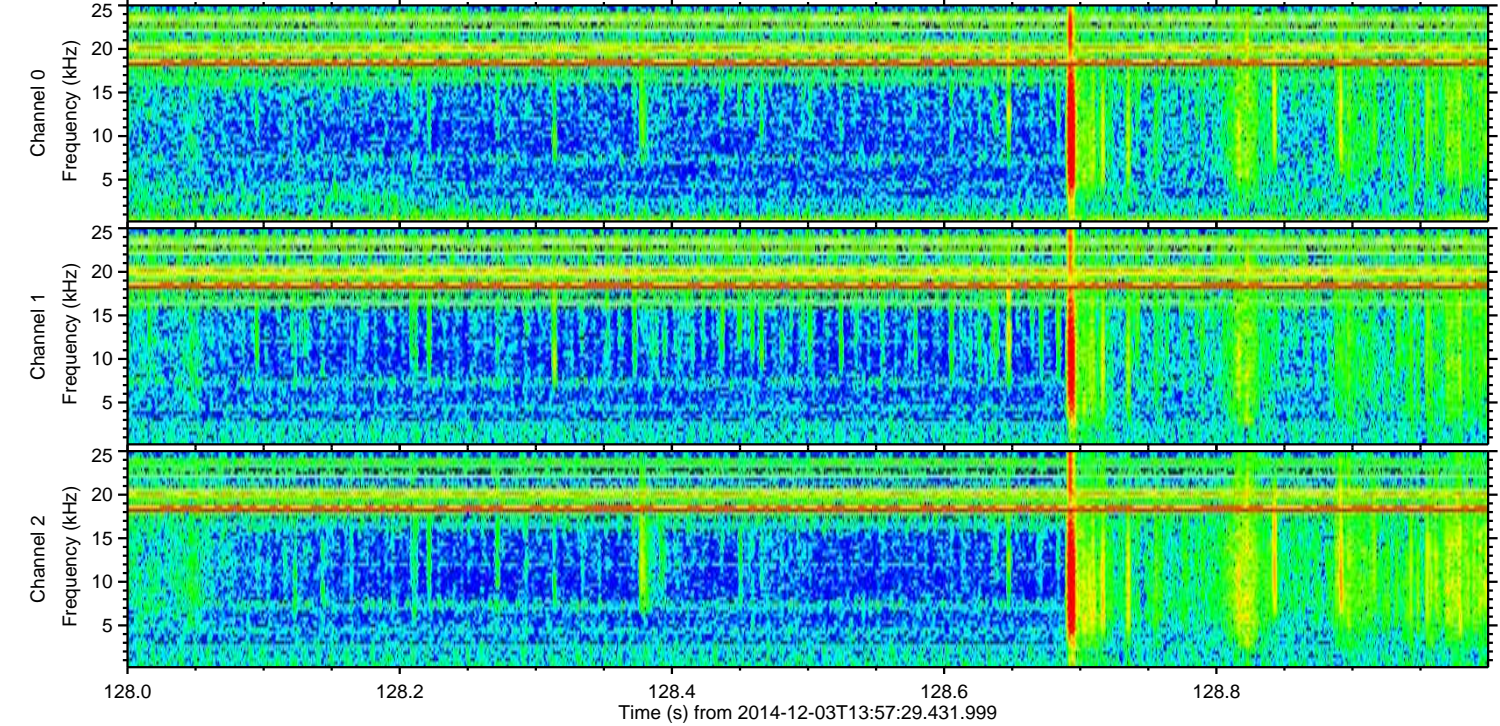
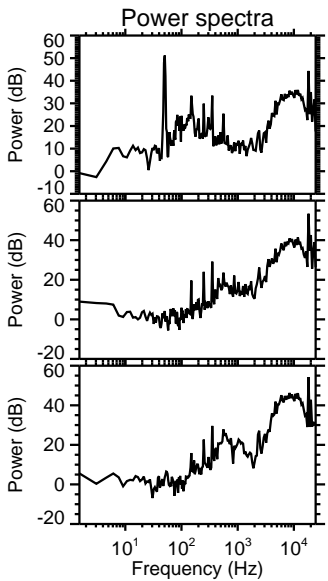
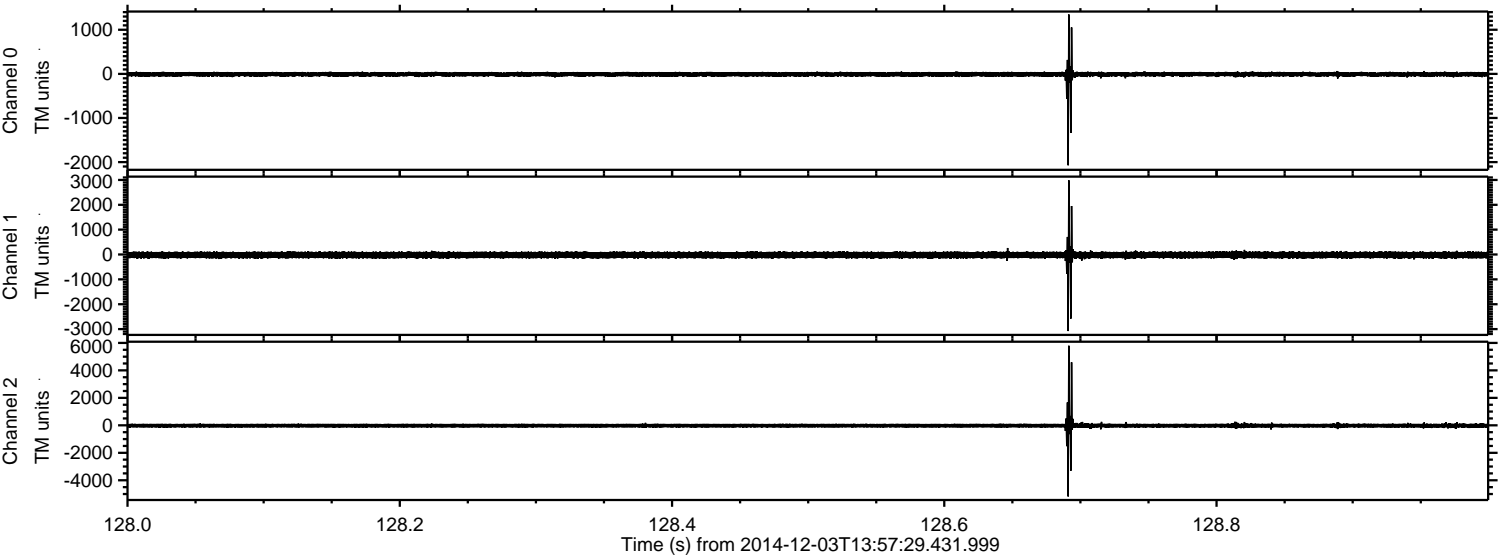
Channel 0
mn: -3634
mx: 1887
 μ : -9.6
 σ : 35.0

Channel 1
mn: -6435
mx: 5020
 μ : -20.7
 σ : 91.0

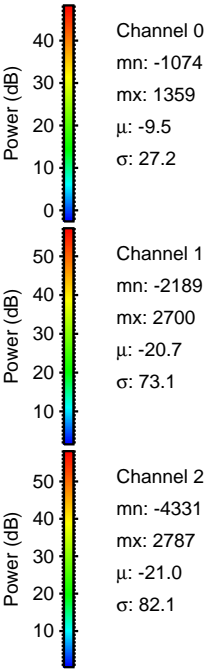
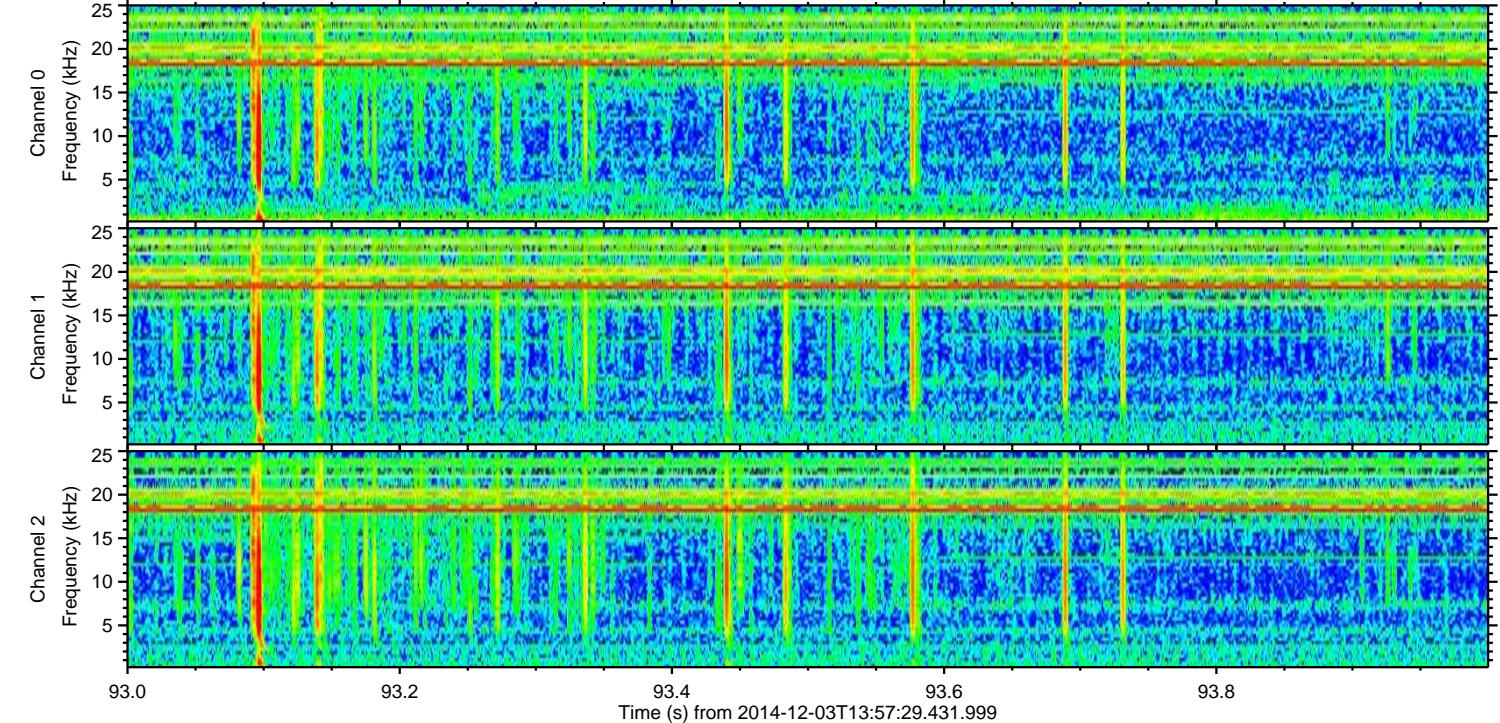
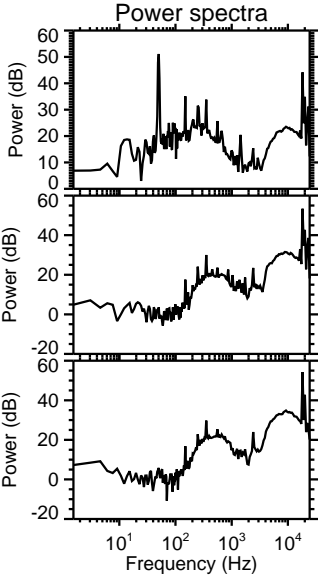
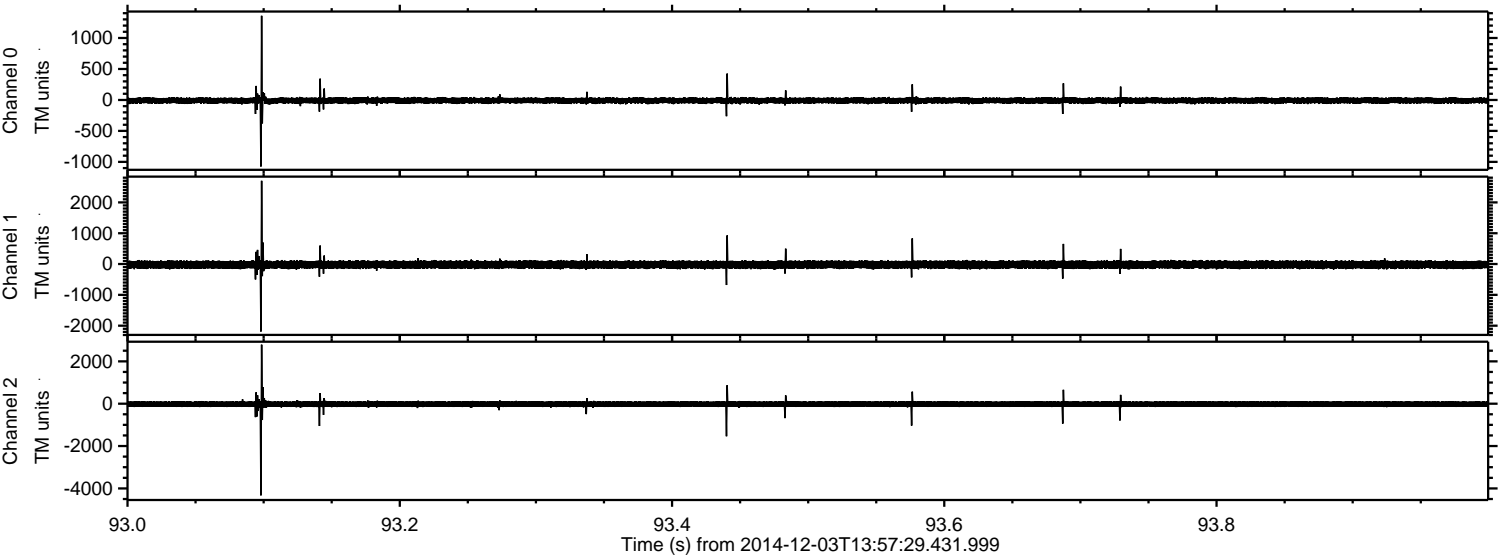
Channel 2
mn: -8437
mx: 6369
 μ : -20.9
 σ : 107.4

ELMAVAN 3D WAVEFORMS (Measured data sampled at 50 kHz) 49783 packets of 144 samples from 2014-12-03T13:57:29.431.999. Part 129/144

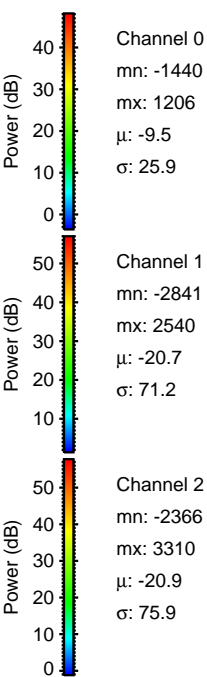
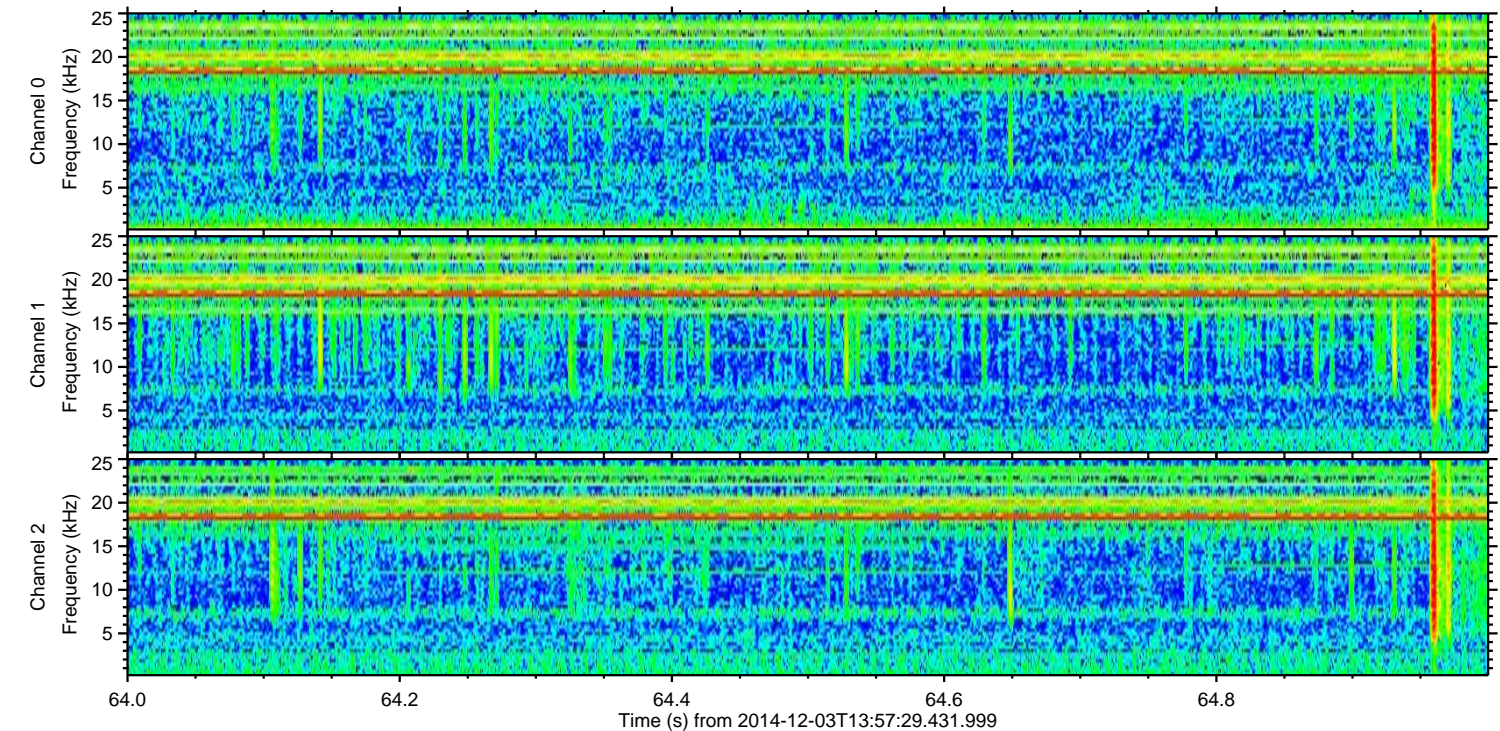
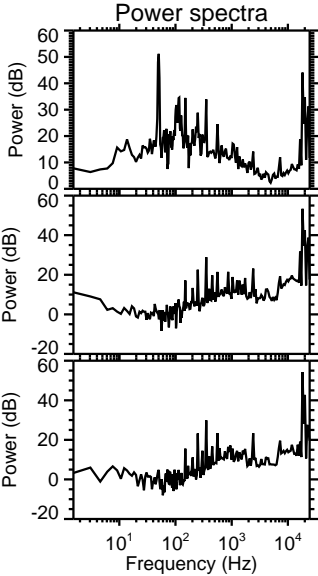
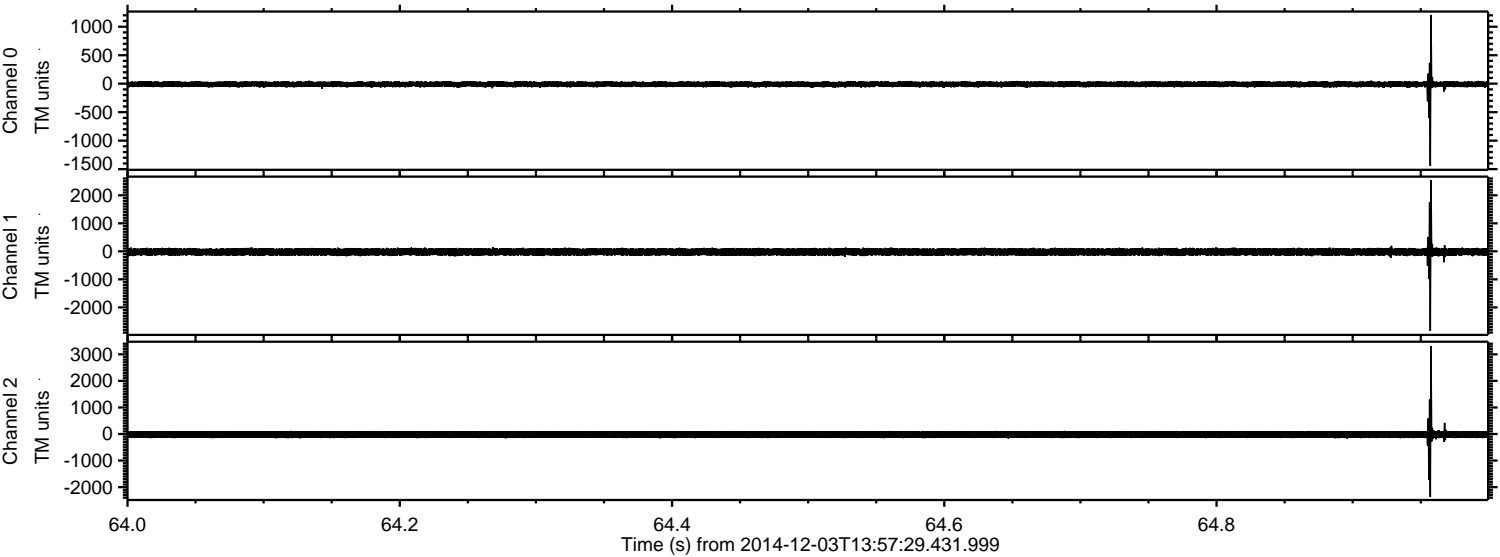
Processed Wed Dec 3 15:04:48 2014 by ELM ver.2012-10-06 from 001__elm20141203_135728__dat00.bin



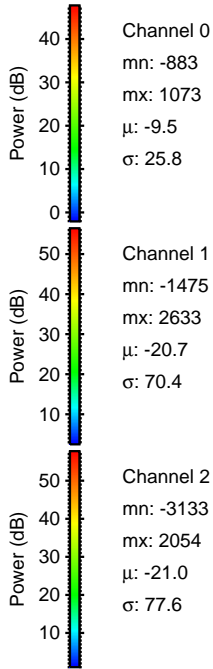
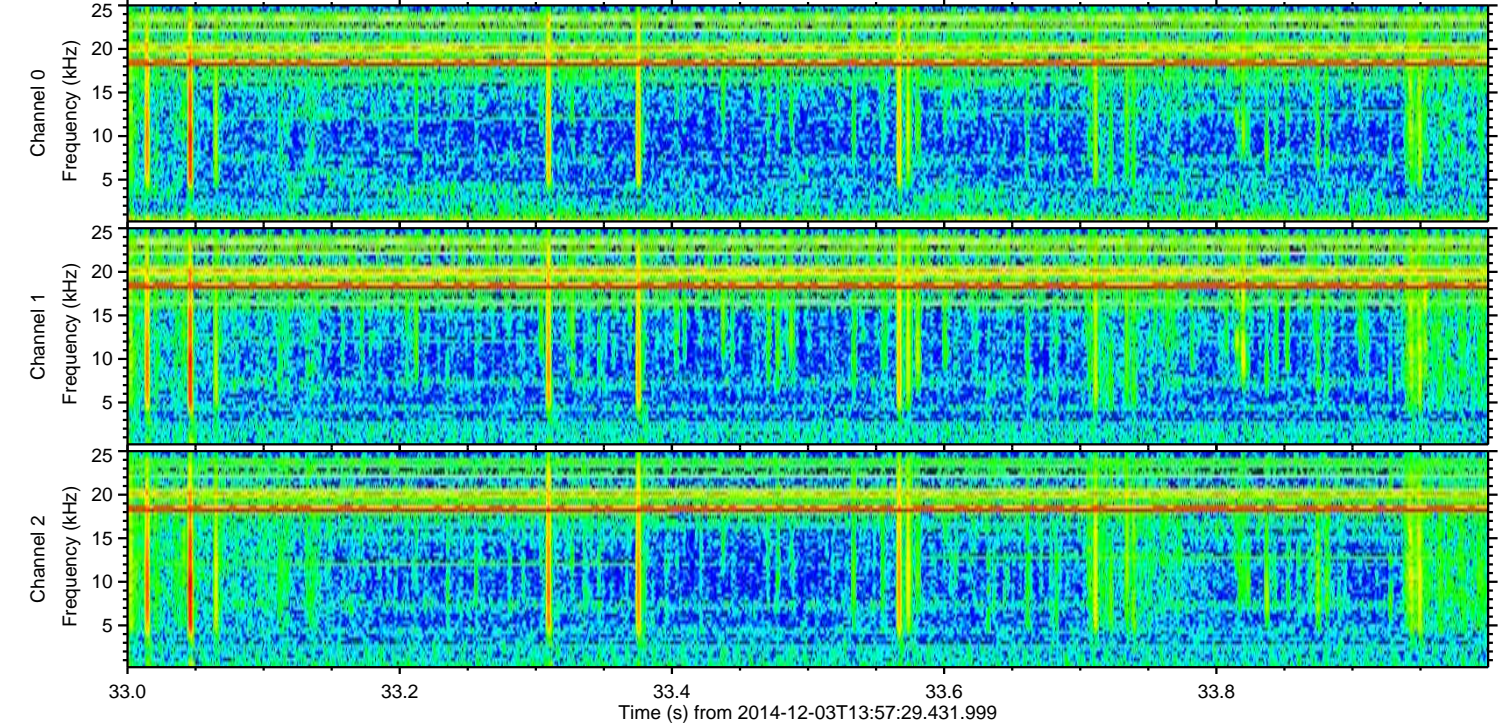
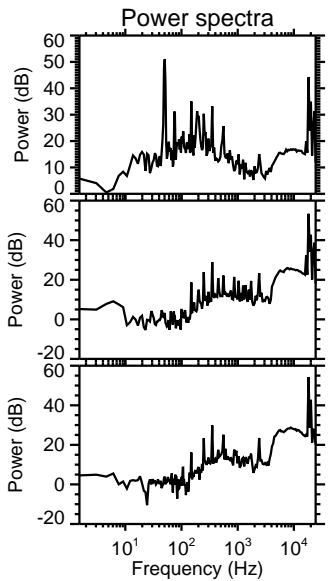
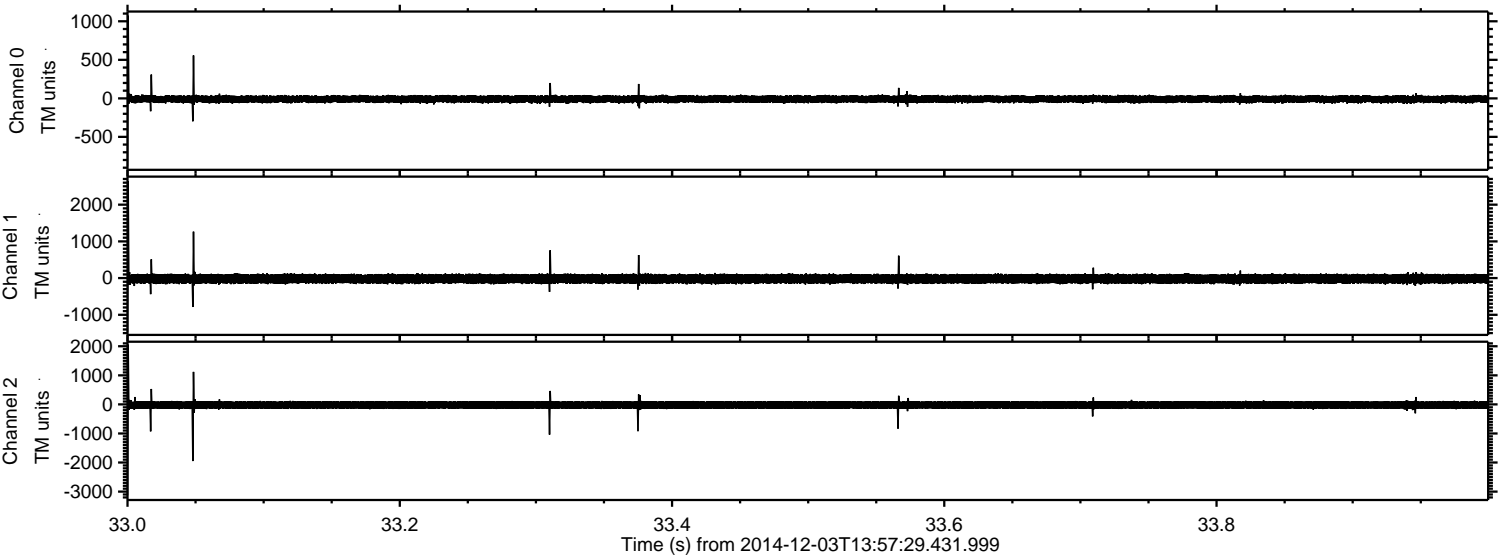
Processed Wed Dec 3 15:04:49 2014 by ELM ver.2012-10-06 from 001__elm20141203_135728__dat00.bin



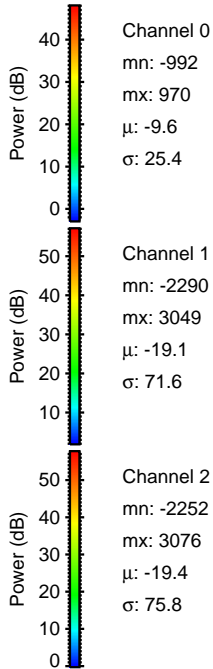
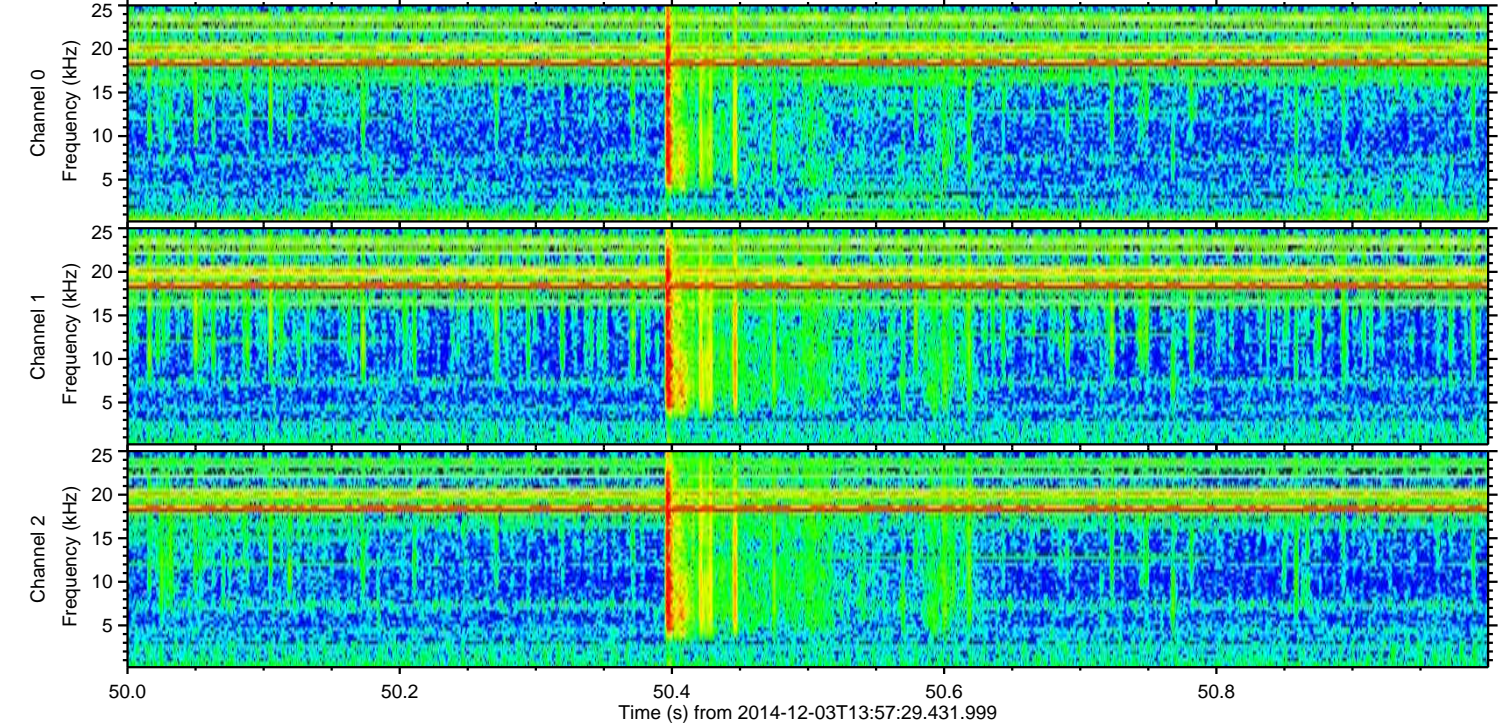
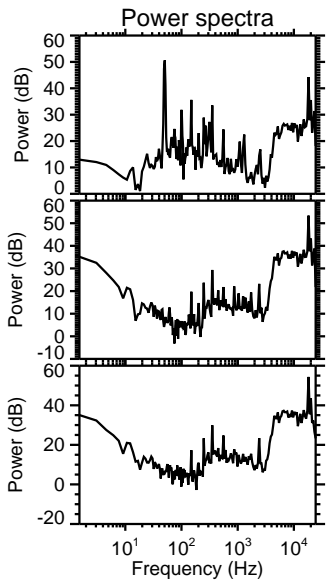
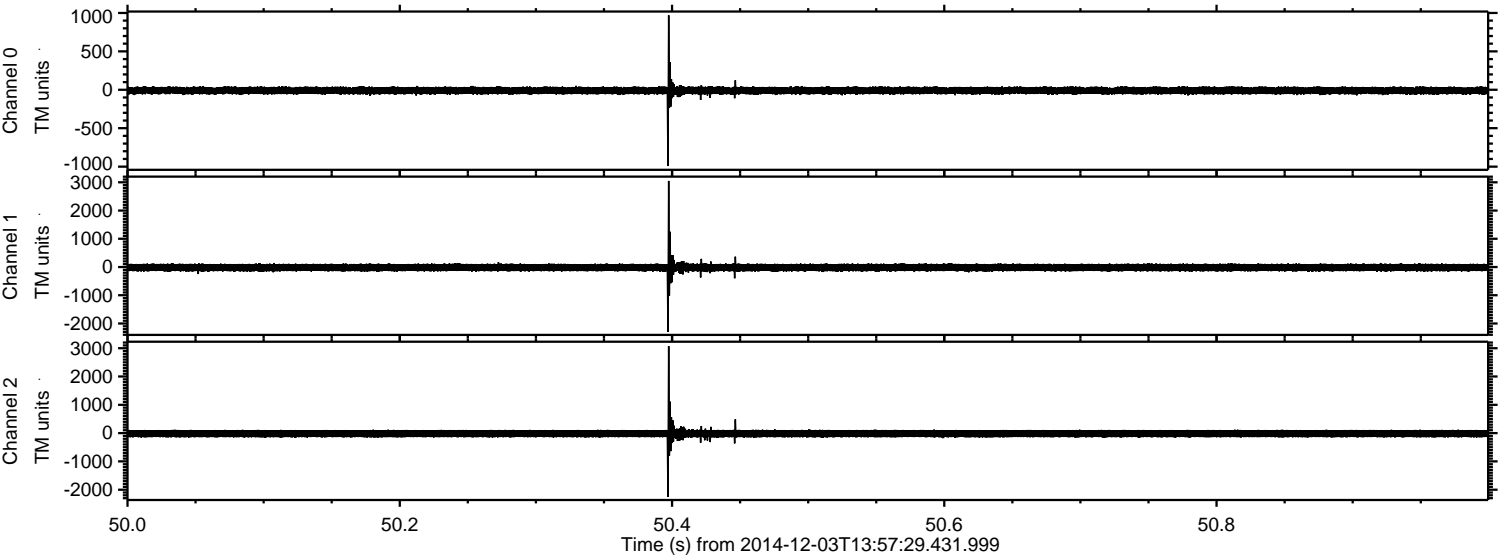
Processed Wed Dec 3 15:04:50 2014 by ELM ver.2012-10-06 from 001__elm20141203_135728__dat00.bin



Processed Wed Dec 3 15:04:51 2014 by ELM ver.2012-10-06 from 001__elm20141203_135728__dat00.bin



Processed Wed Dec 3 15:04:52 2014 by ELM ver.2012-10-06 from 001__elm20141203_135728__dat00.bin



Processed Wed Dec 3 15:04:53 2014 by ELM ver.2012-10-06 from 001__elm20141203_135728__dat00.bin

