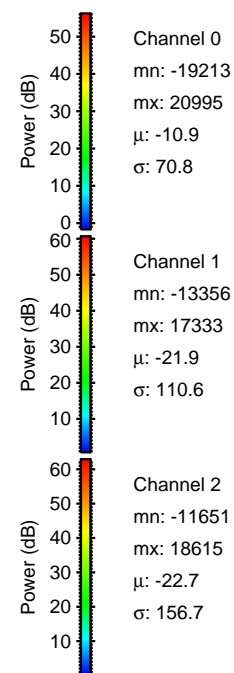
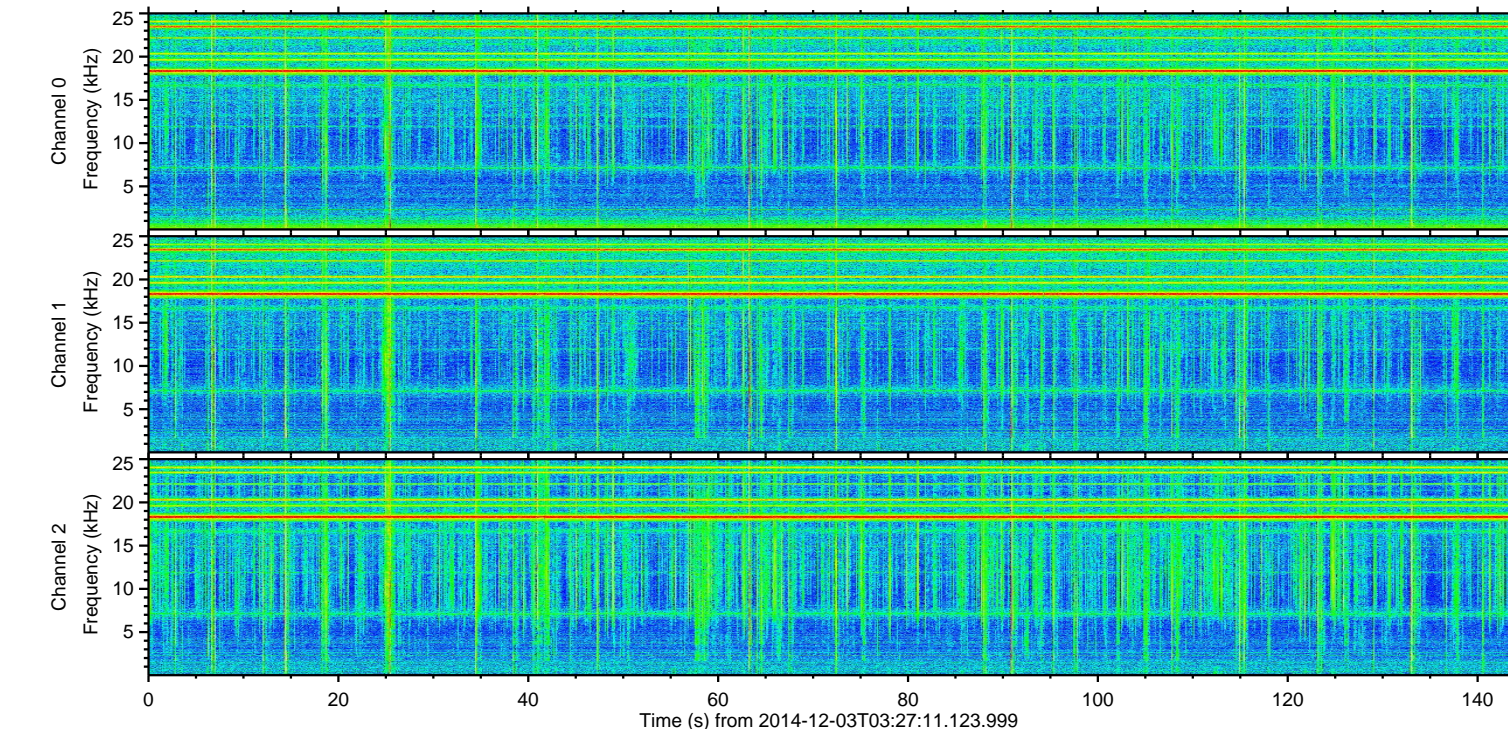
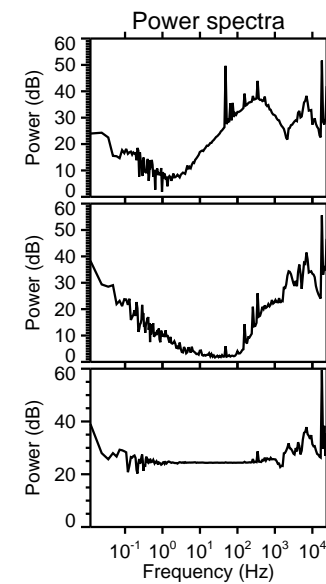
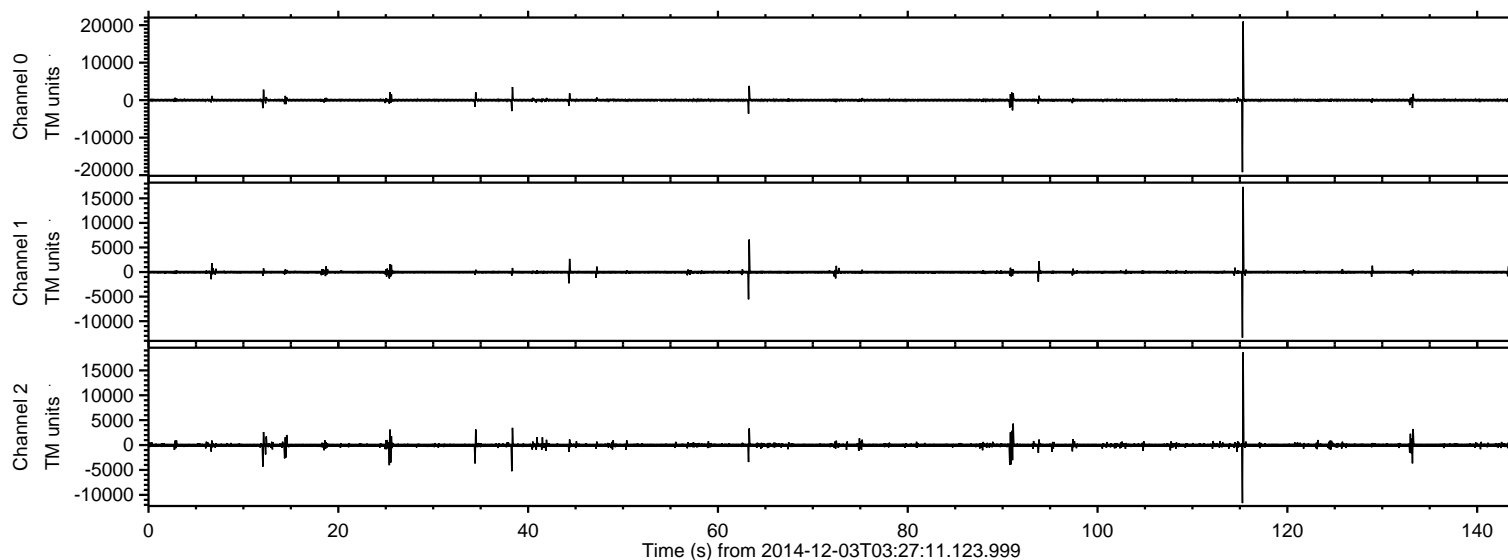


# ELMAVAN 3D WAVEFORMS (Measured data sampled at 50 kHz) 49782 packets of 144 samples from 2014-12-03T03:27:11.123.999.

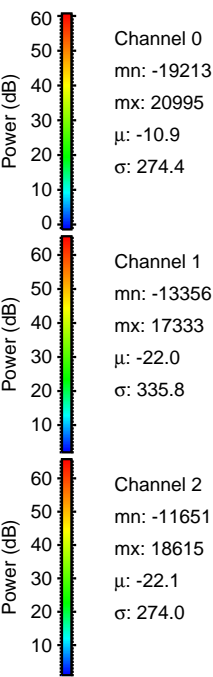
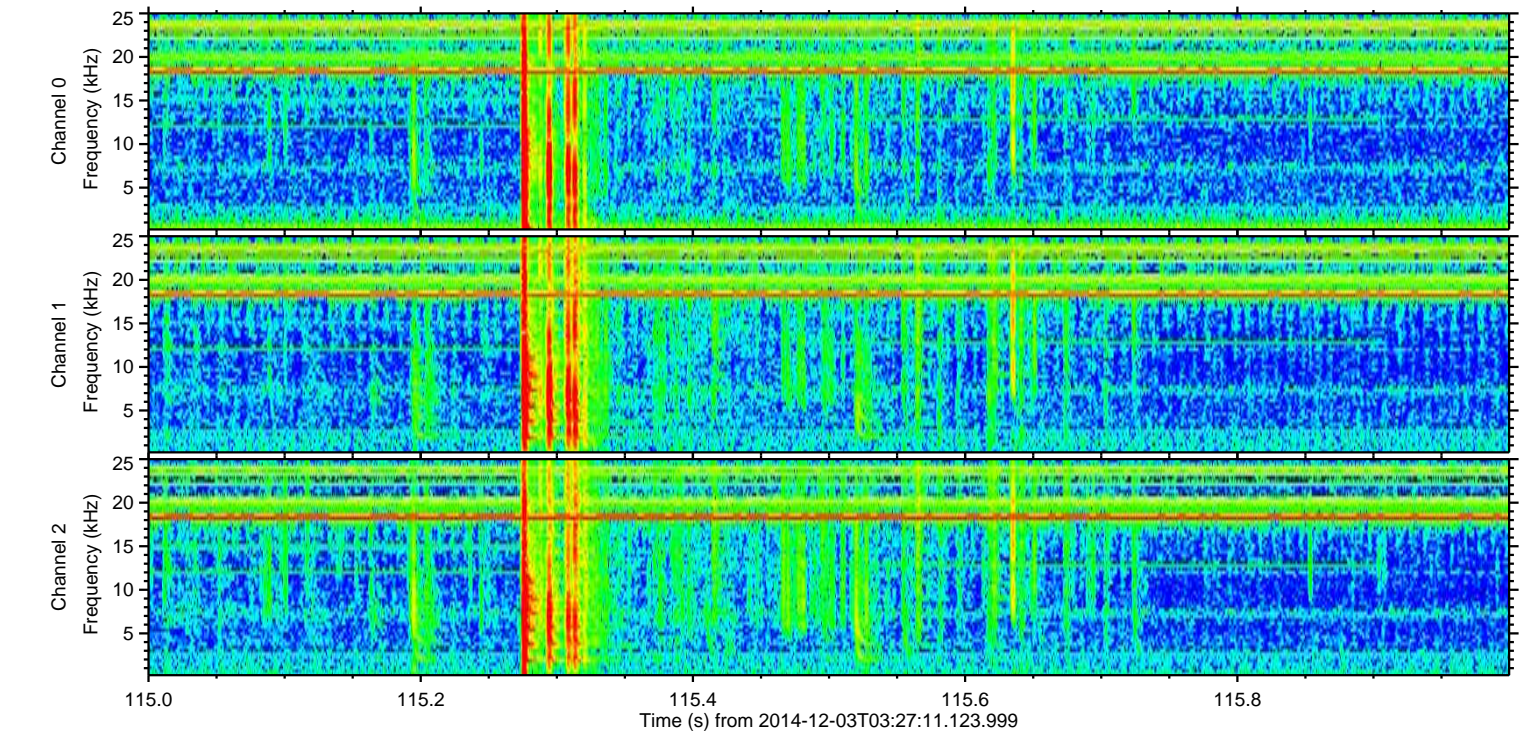
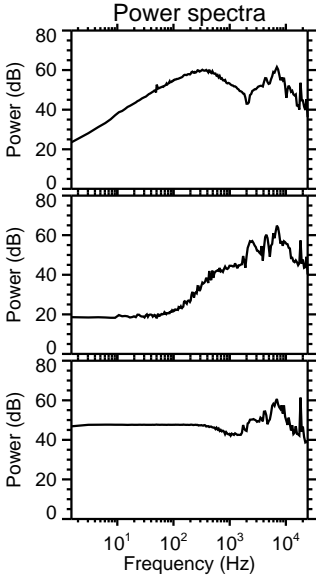
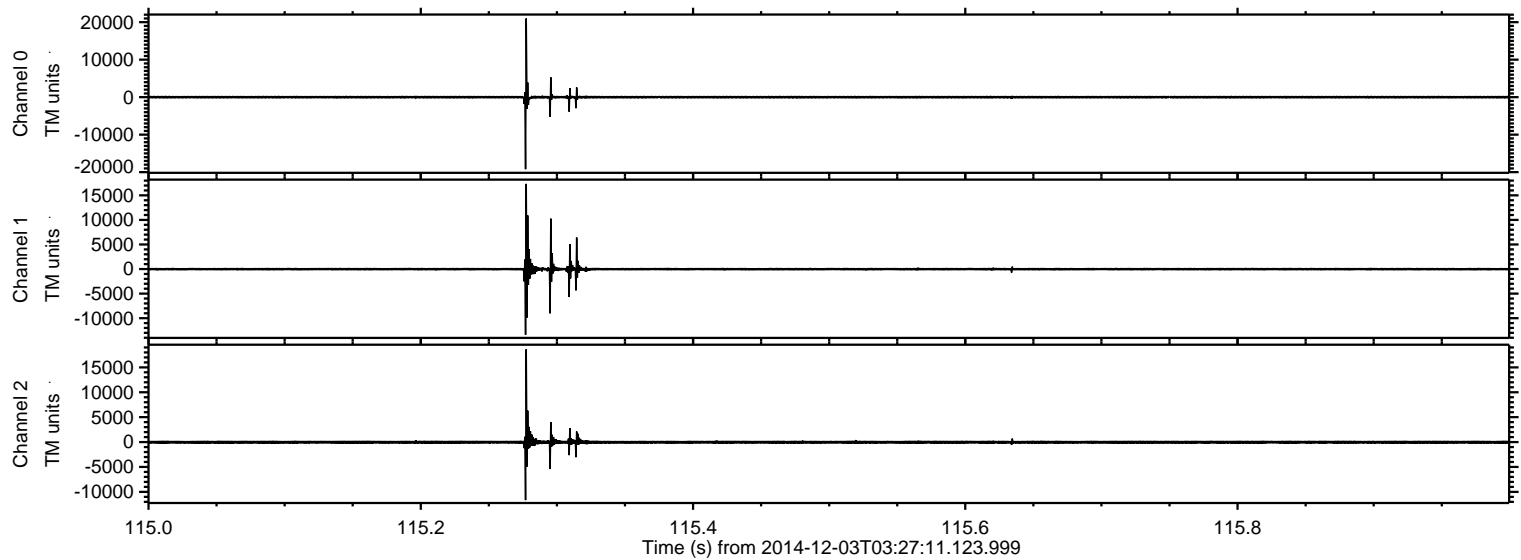
Processed Wed Dec 3 04:35:17 2014 by ELM ver.2012-10-06 from 001\_\_elm20141203\_032710\_\_dat00.bin





ELMAVAN 3D WAVEFORMS (Measured data sampled at 50 kHz) 49782 packets of 144 samples from 2014-12-03T03:27:11.123.999. Part 116/144

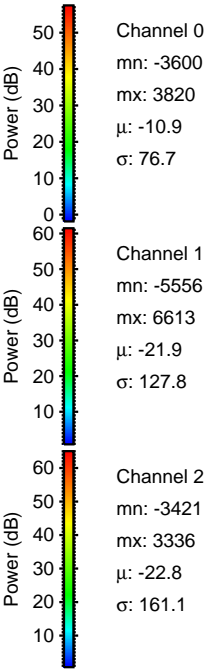
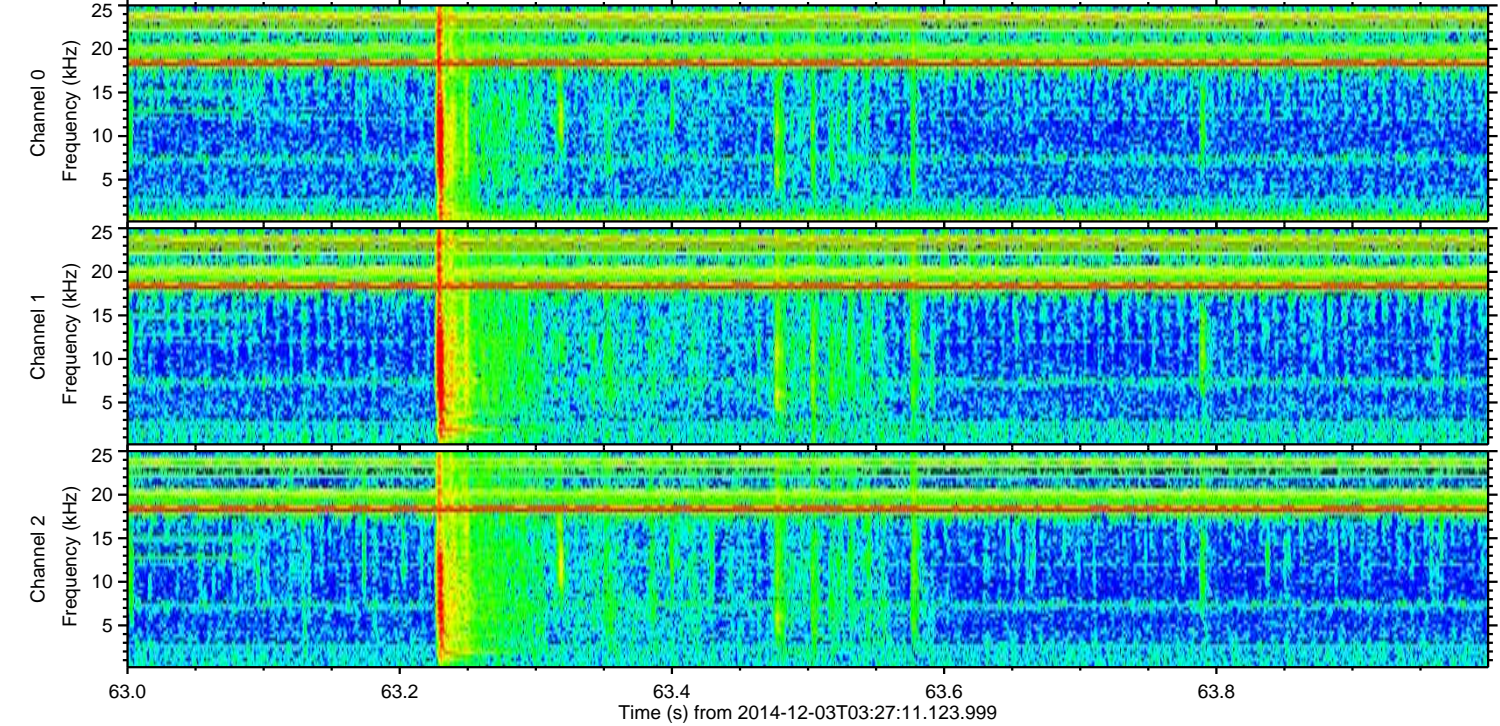
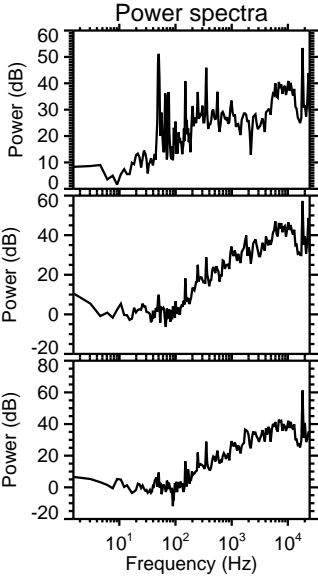
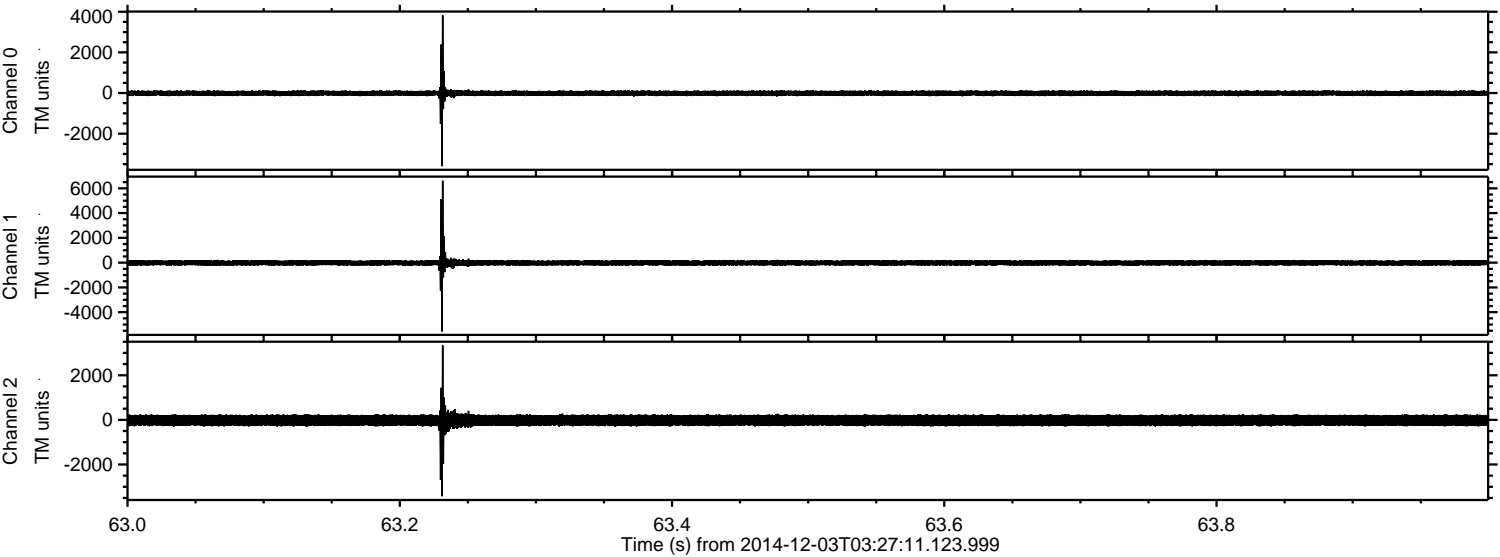
Processed Wed Dec 3 04:35:29 2014 by ELM ver.2012-10-06 from 001\_\_elm20141203\_032710\_\_dat00.bin





ELMAVAN 3D WAVEFORMS (Measured data sampled at 50 kHz) 49782 packets of 144 samples from 2014-12-03T03:27:11.123.999. Part 64/144

Processed Wed Dec 3 04:35:30 2014 by ELM ver.2012-10-06 from 001\_\_elm20141203\_032710\_\_dat00.bin



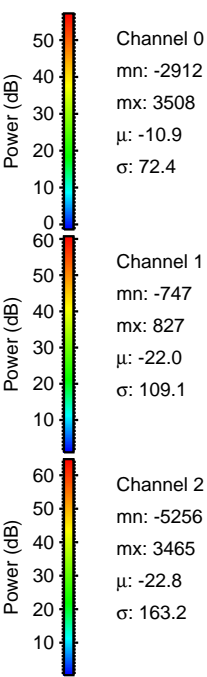
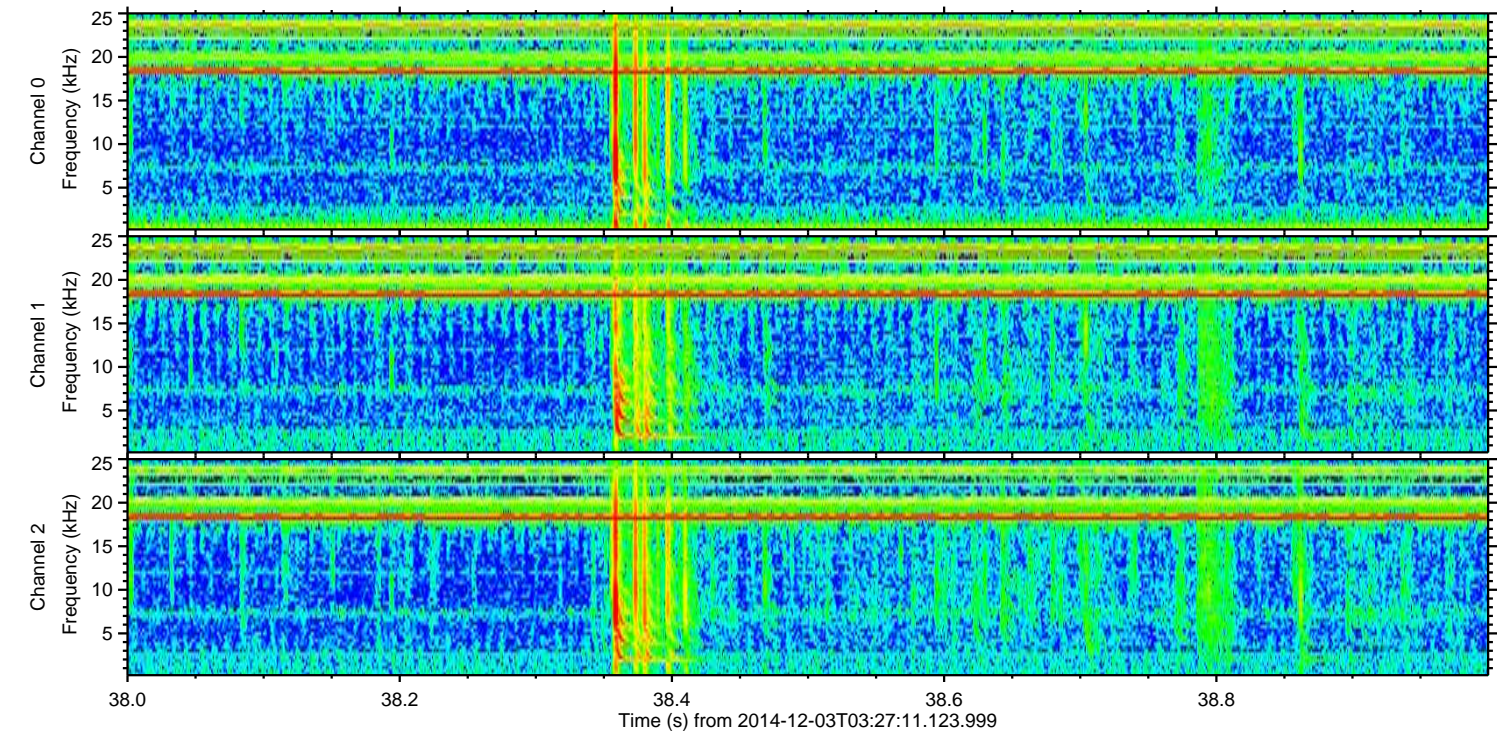
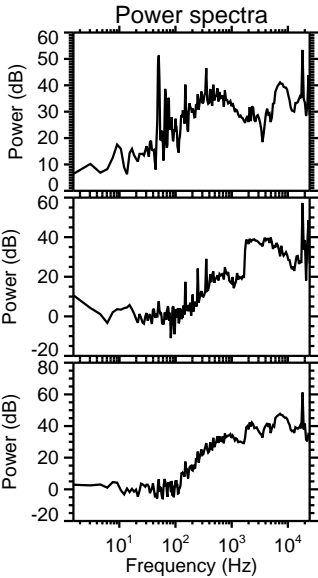
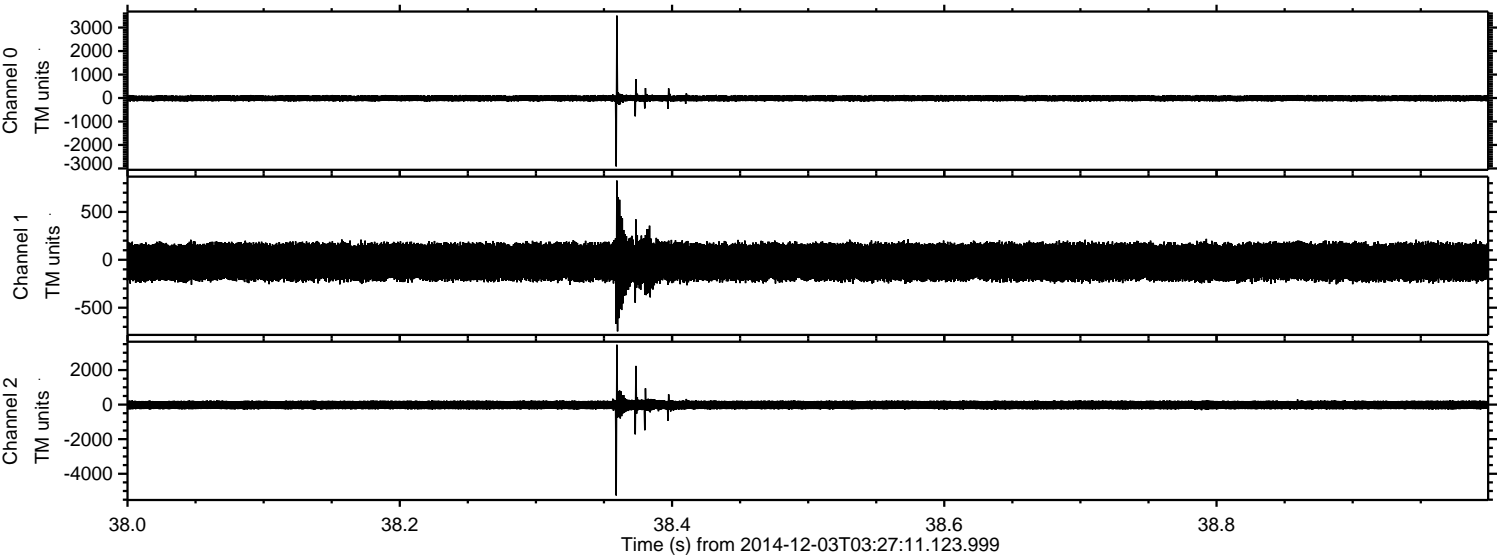
Channel 0  
mn: -3600  
mx: 3820  
 $\mu$ : -10.9  
 $\sigma$ : 76.7

Channel 1  
mn: -5556  
mx: 6613  
 $\mu$ : -21.9  
 $\sigma$ : 127.8

Channel 2  
mn: -3421  
mx: 3336  
 $\mu$ : -22.8  
 $\sigma$ : 161.1



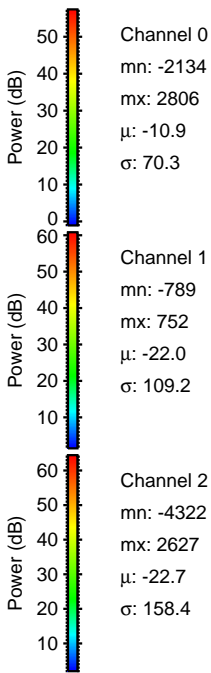
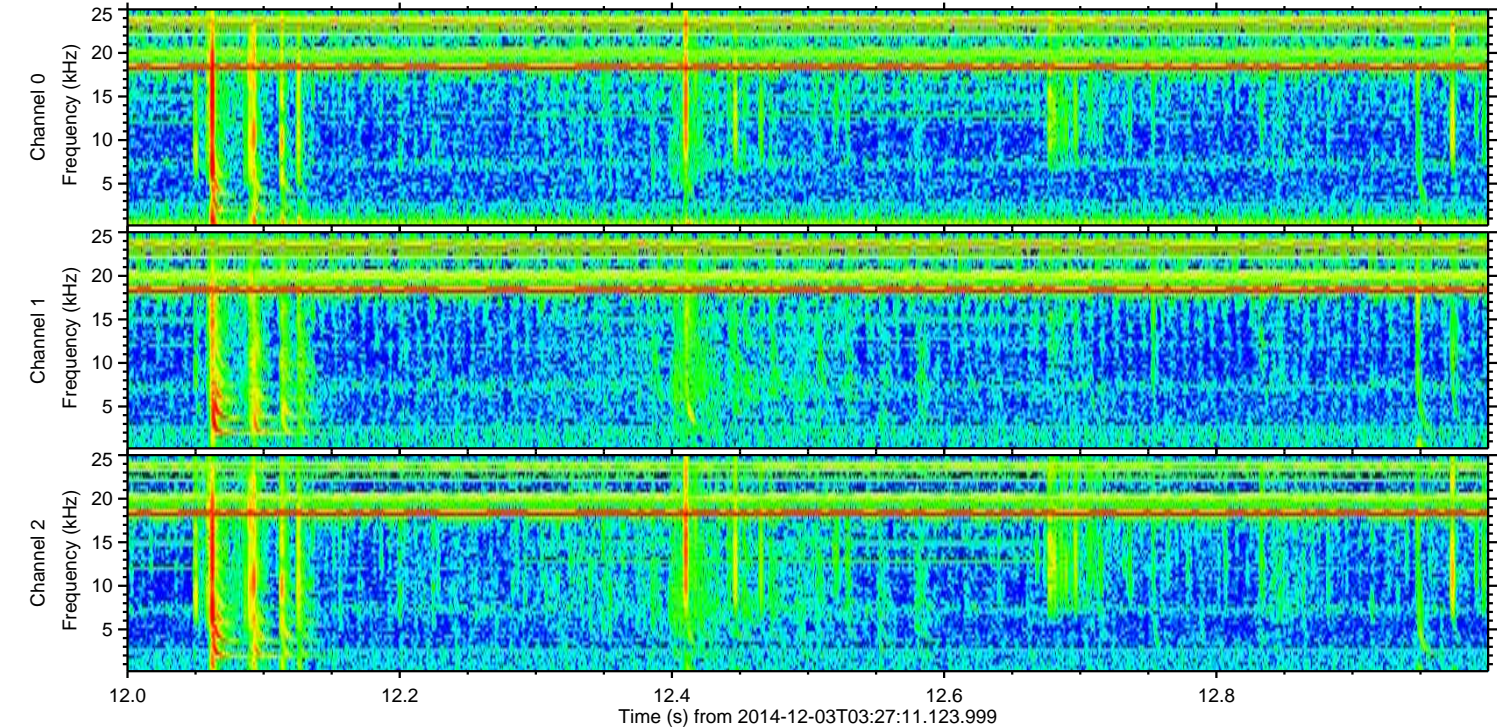
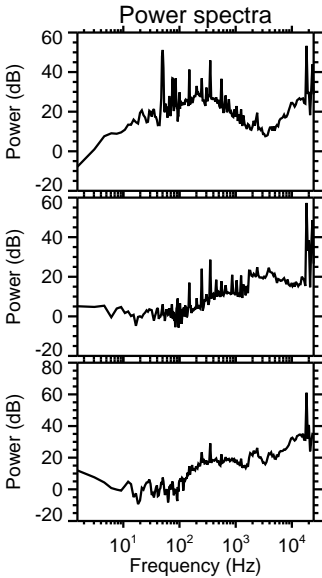
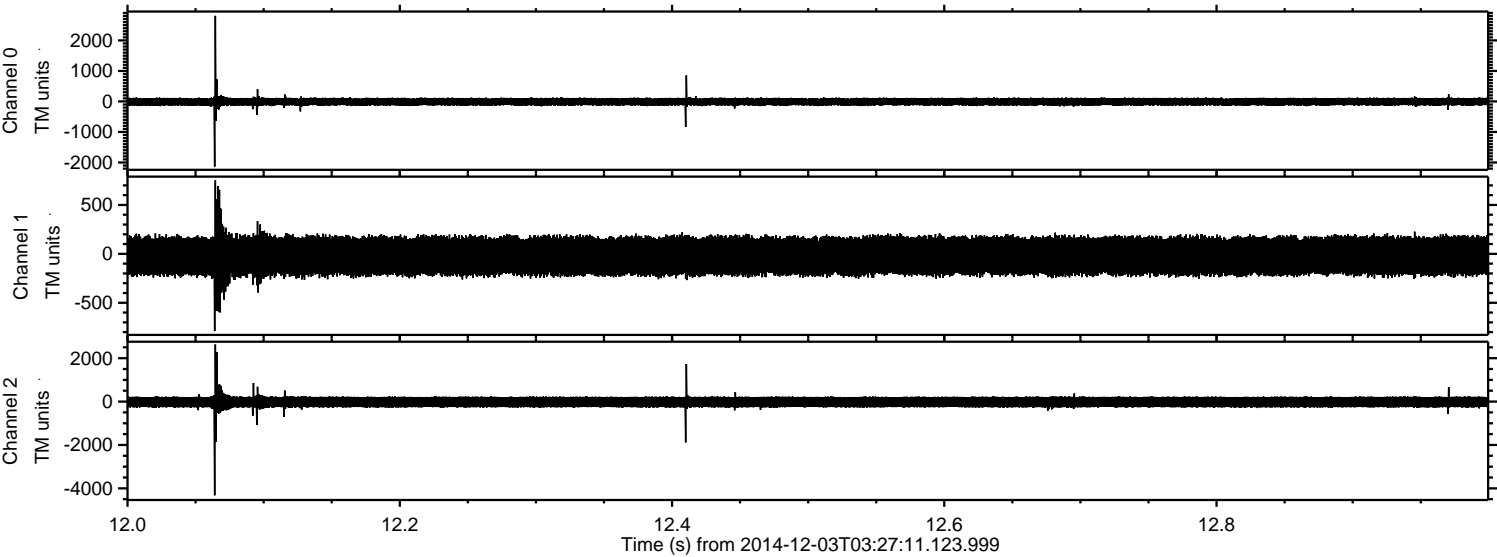
Processed Wed Dec 3 04:35:31 2014 by ELM ver.2012-10-06 from 001\_\_elm20141203\_032710\_\_dat00.bin





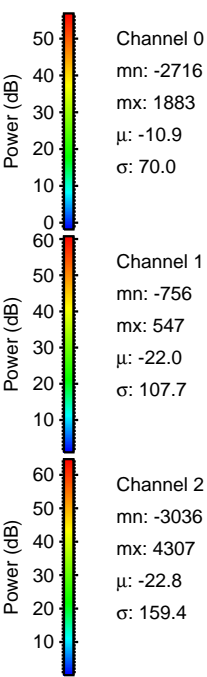
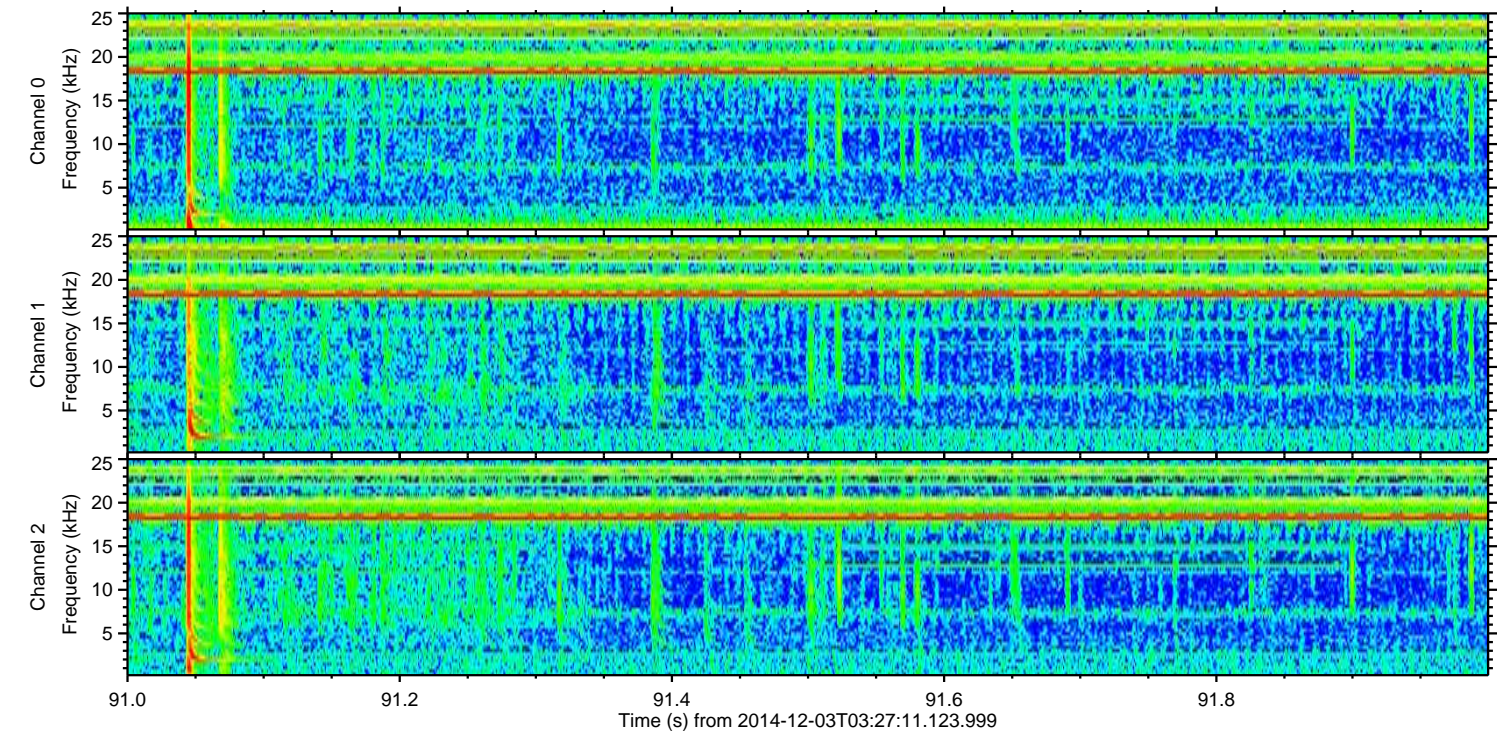
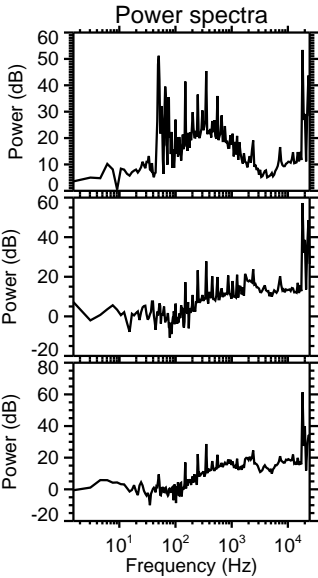
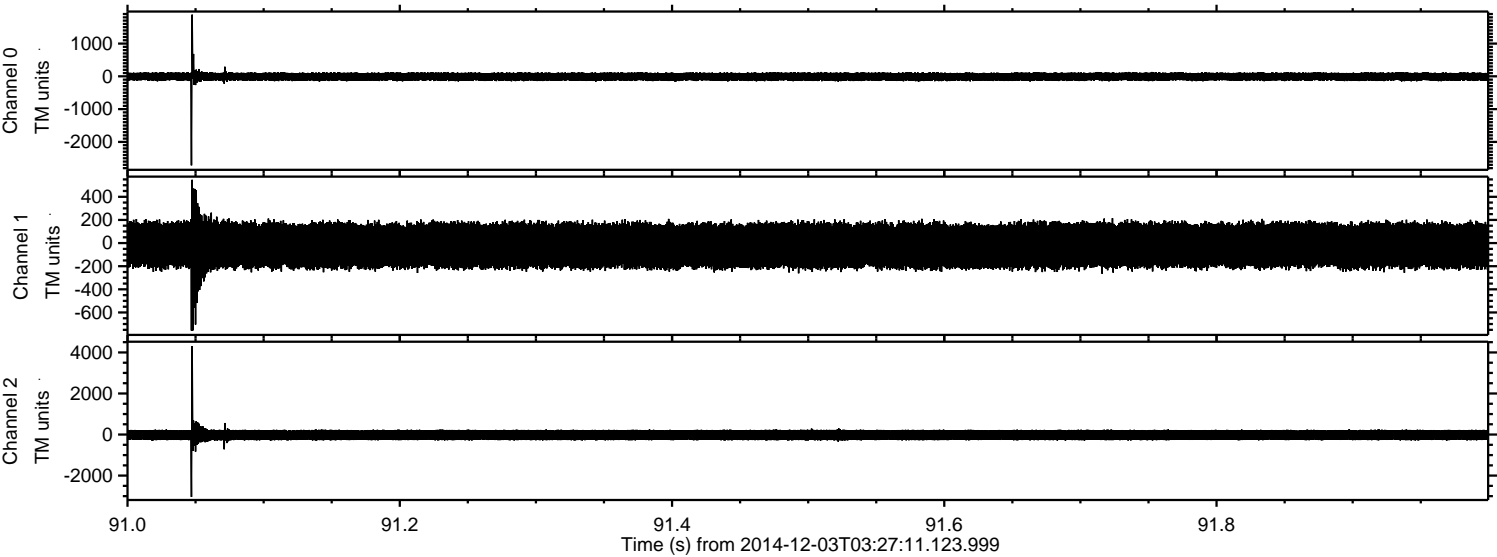
ELMAVAN 3D WAVEFORMS (Measured data sampled at 50 kHz) 49782 packets of 144 samples from 2014-12-03T03:27:11.123.999. Part 13/144

Processed Wed Dec 3 04:35:32 2014 by ELM ver.2012-10-06 from 001\_\_elm20141203\_032710\_\_dat00.bin





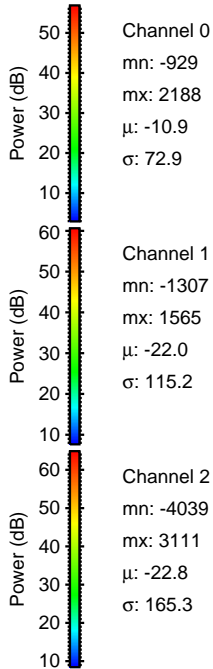
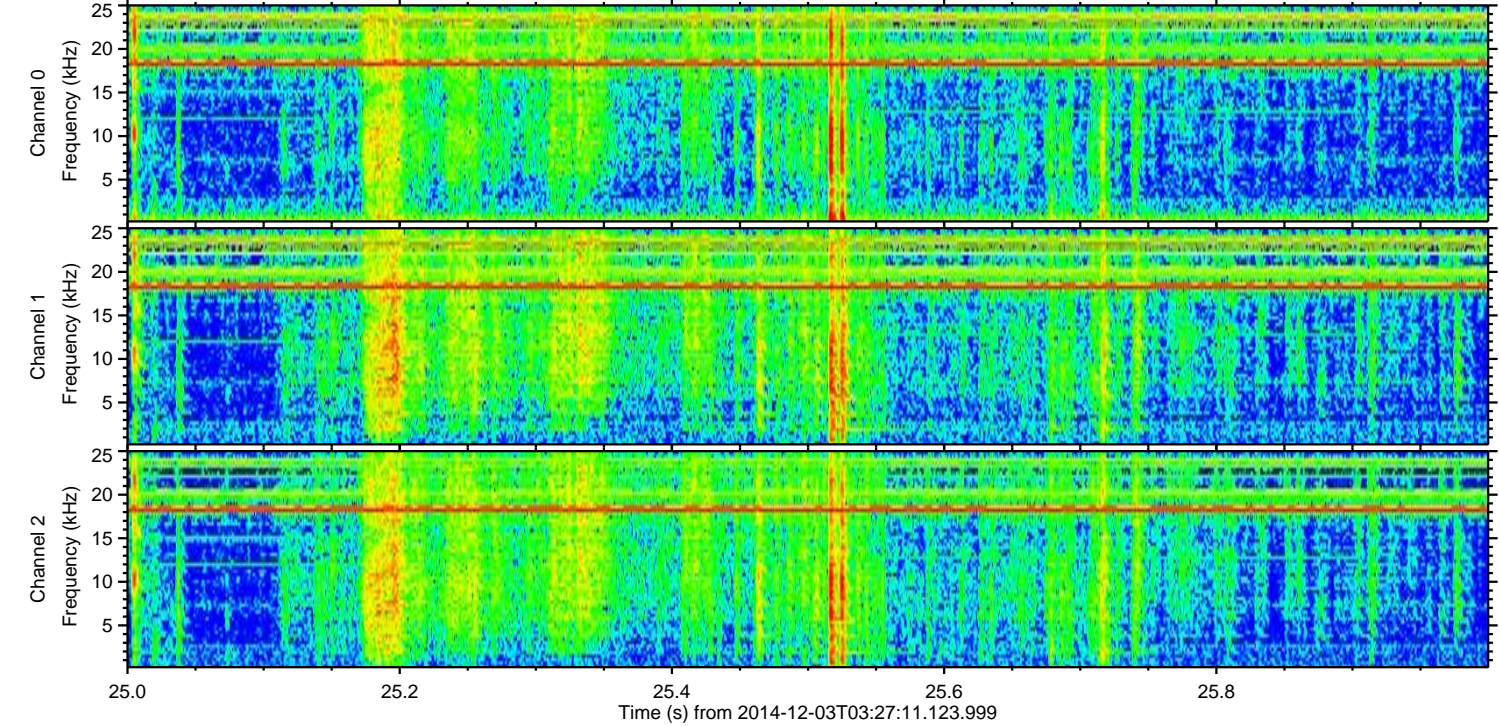
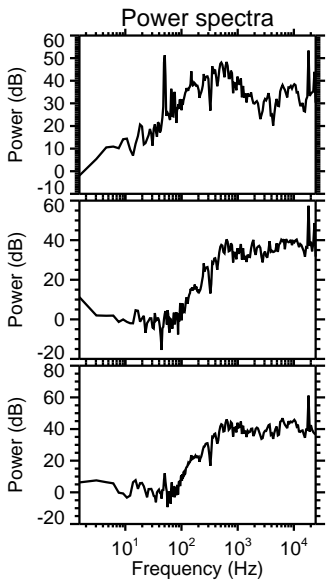
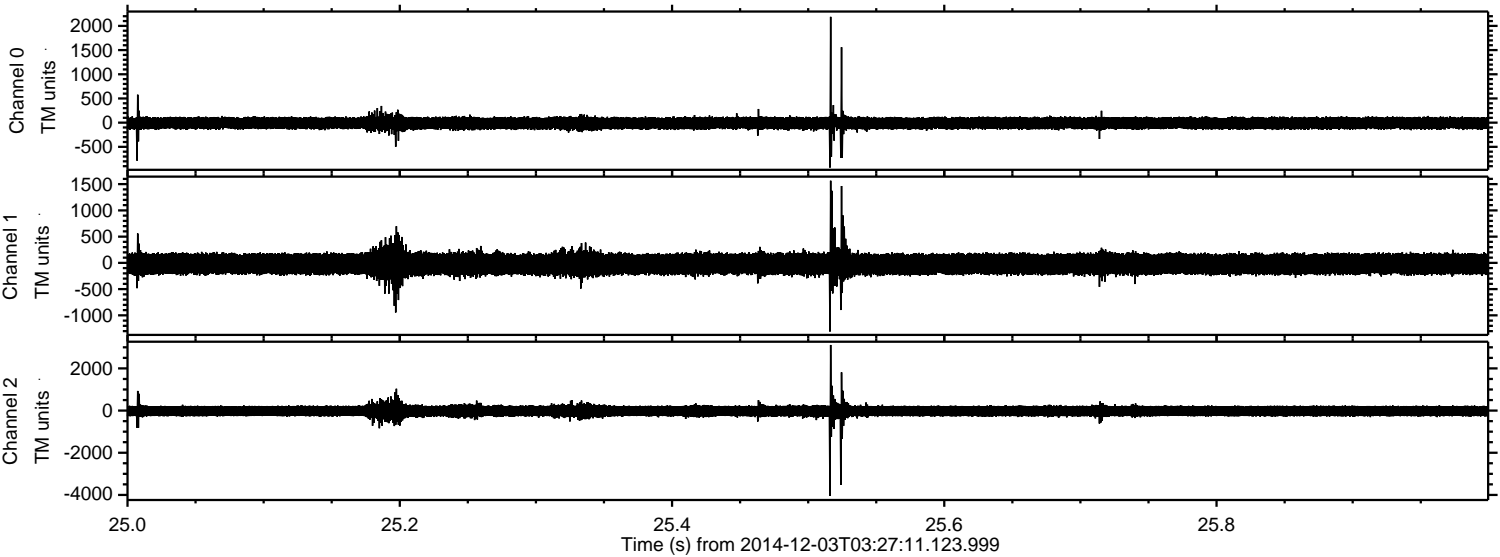
Processed Wed Dec 3 04:35:33 2014 by ELM ver.2012-10-06 from 001\_\_elm20141203\_032710\_\_dat00.bin





ELMAVAN 3D WAVEFORMS (Measured data sampled at 50 kHz) 49782 packets of 144 samples from 2014-12-03T03:27:11.123.999. Part 26/144

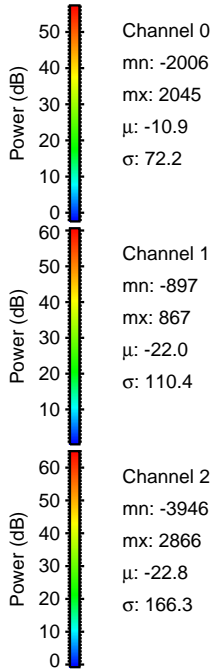
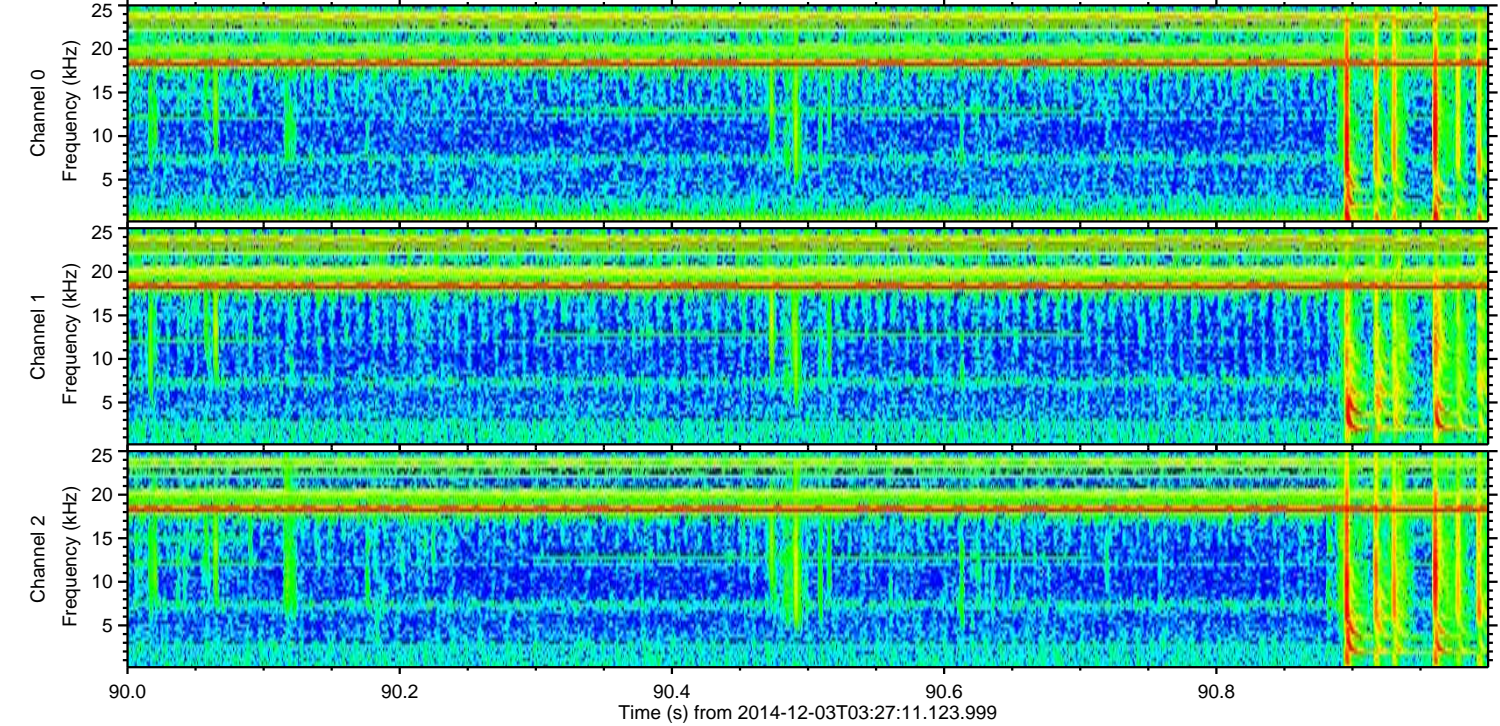
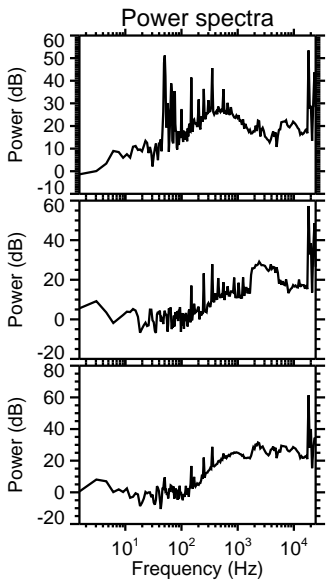
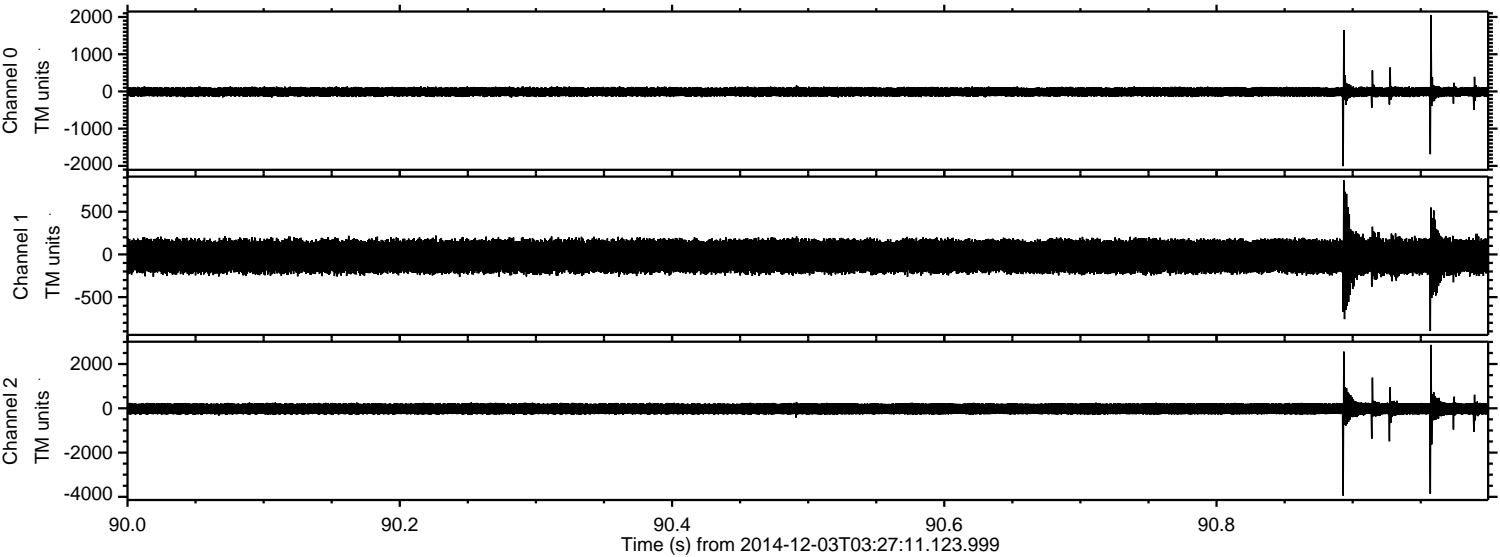
Processed Wed Dec 3 04:35:34 2014 by ELM ver.2012-10-06 from 001\_\_elm20141203\_032710\_\_dat00.bin





ELMAVAN 3D WAVEFORMS (Measured data sampled at 50 kHz) 49782 packets of 144 samples from 2014-12-03T03:27:11.123.999. Part 91/144

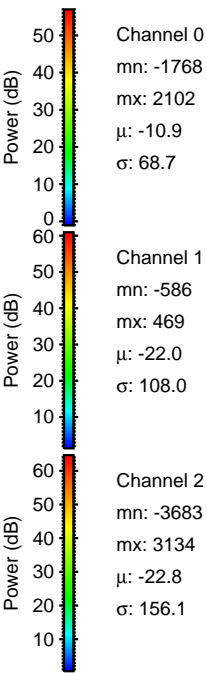
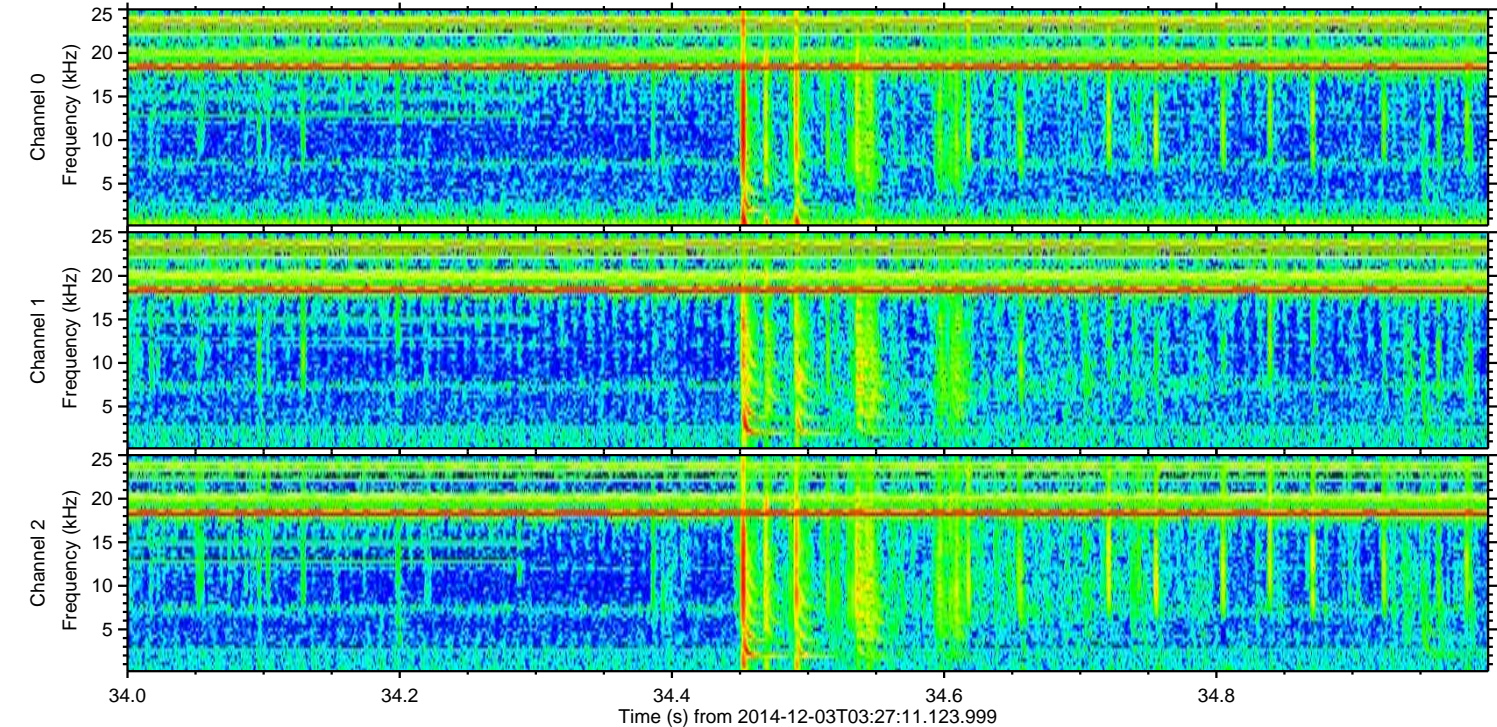
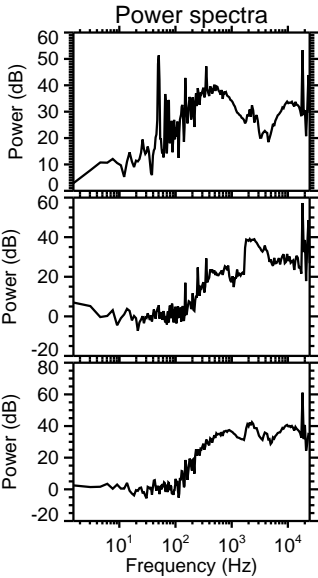
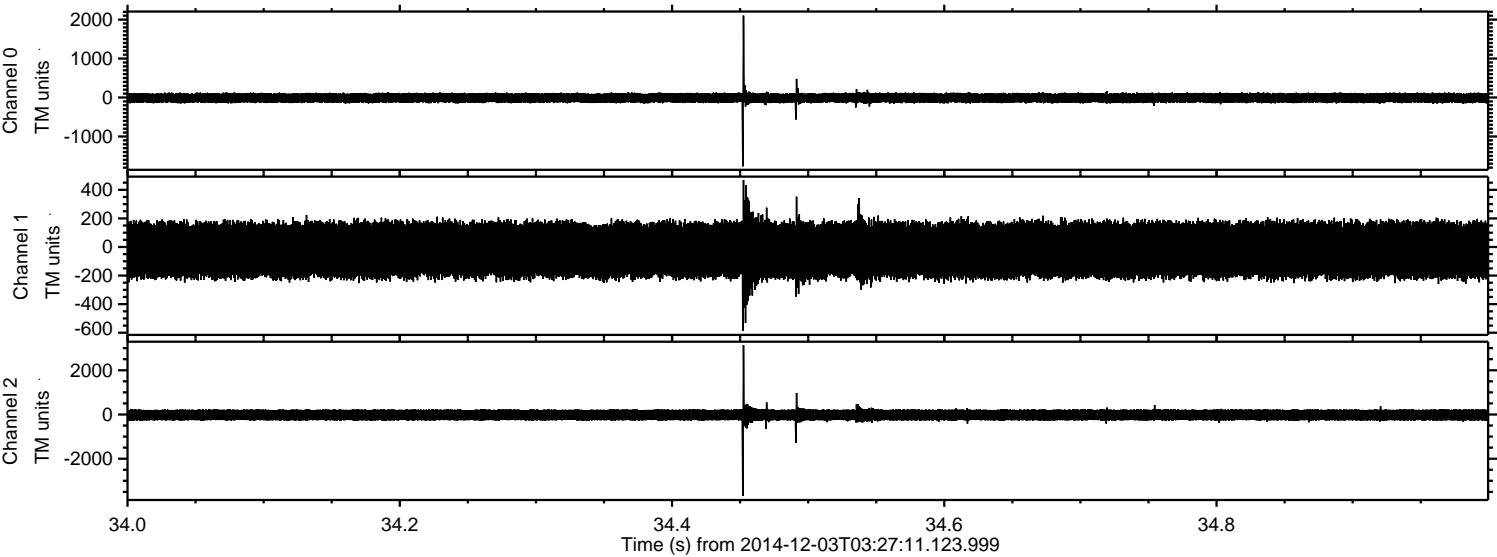
Processed Wed Dec 3 04:35:35 2014 by ELM ver.2012-10-06 from 001\_\_elm20141203\_032710\_\_dat00.bin





ELMAVAN 3D WAVEFORMS (Measured data sampled at 50 kHz) 49782 packets of 144 samples from 2014-12-03T03:27:11.123.999. Part 35/144

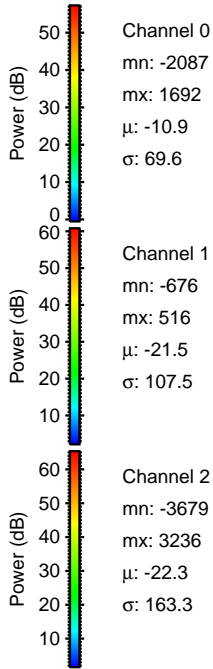
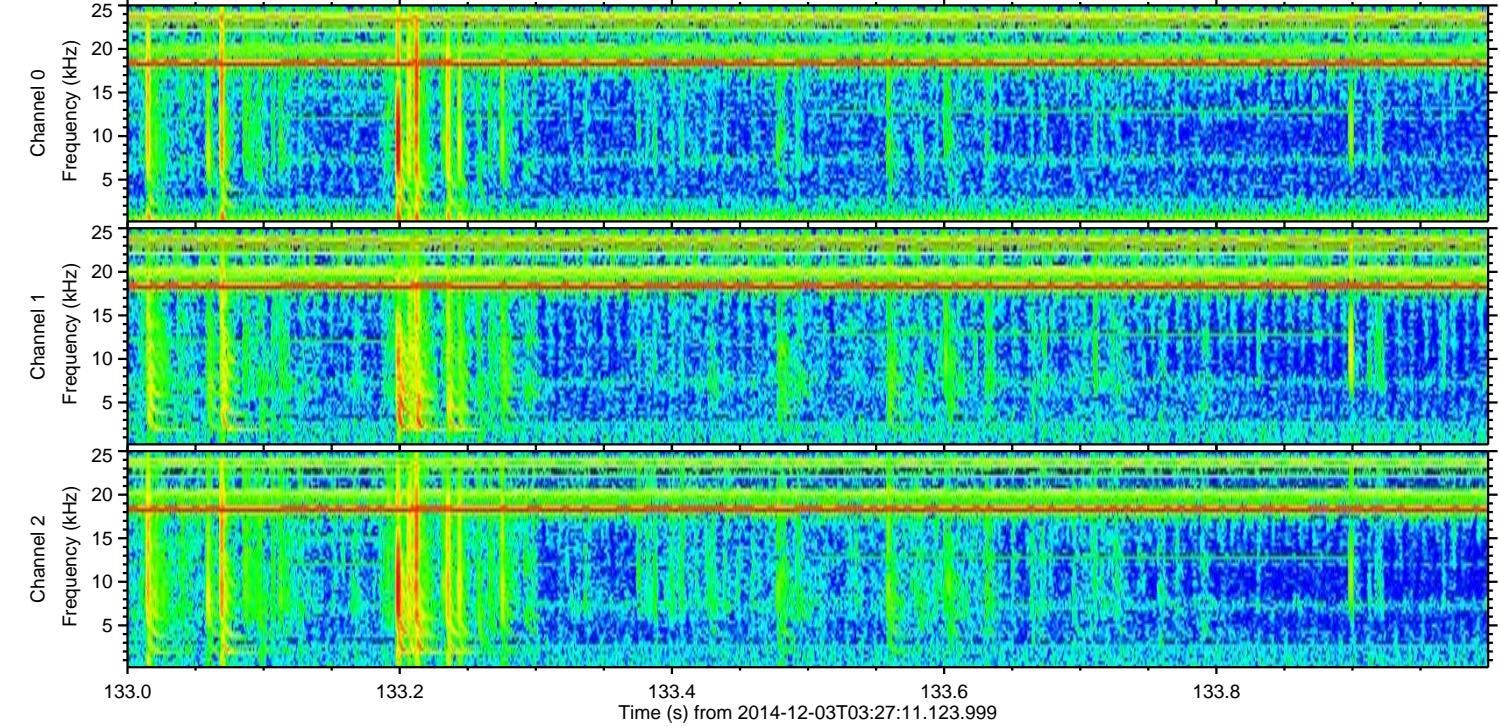
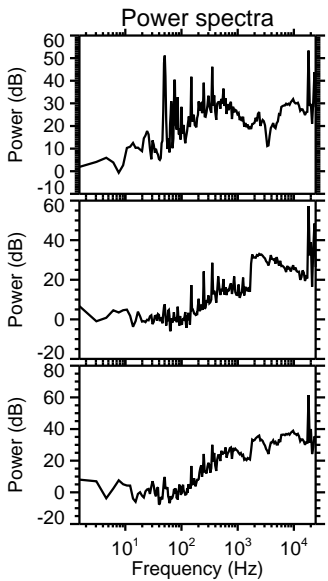
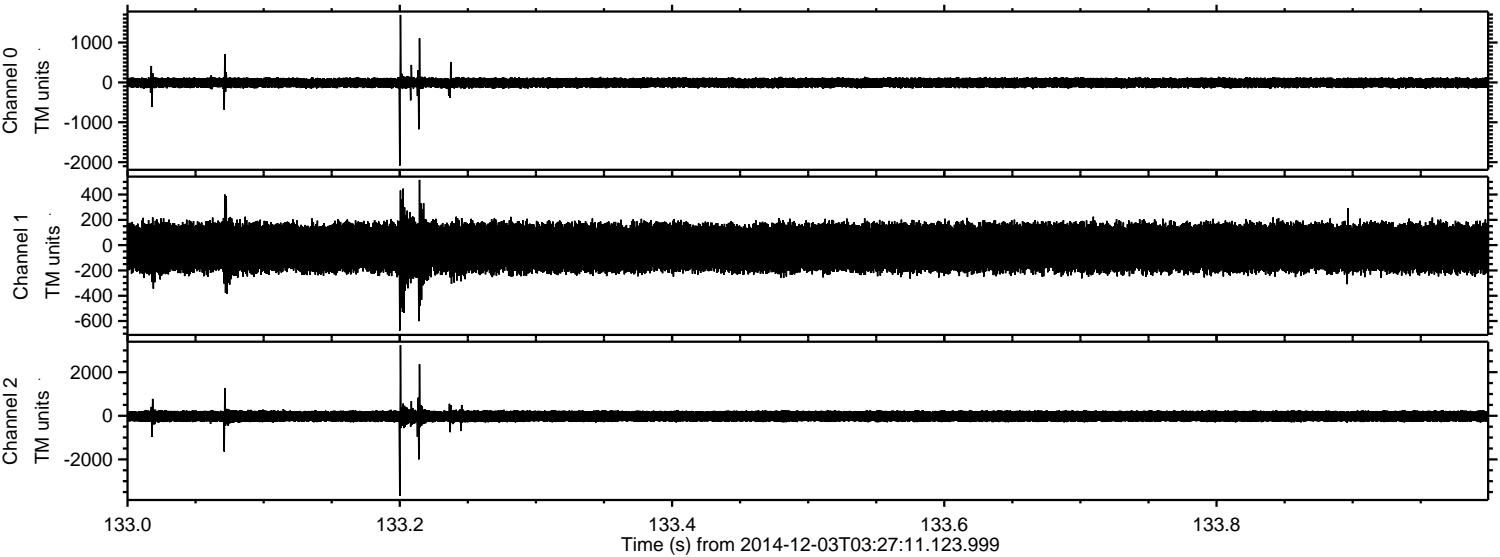
Processed Wed Dec 3 04:35:35 2014 by ELM ver.2012-10-06 from 001\_\_elm20141203\_032710\_\_dat00.bin





ELMAVAN 3D WAVEFORMS (Measured data sampled at 50 kHz) 49782 packets of 144 samples from 2014-12-03T03:27:11.123.999. Part 134/144

Processed Wed Dec 3 04:35:36 2014 by ELM ver.2012-10-06 from 001\_\_elm20141203\_032710\_\_dat00.bin



Channel 0  
mn: -2087  
mx: 1692  
 $\mu$ : -10.9  
 $\sigma$ : 69.6

Channel 1  
mn: -676  
mx: 516  
 $\mu$ : -21.5  
 $\sigma$ : 107.5

Channel 2  
mn: -3679  
mx: 3236  
 $\mu$ : -22.3  
 $\sigma$ : 163.3



Processed Wed Dec 3 04:35:37 2014 by ELM ver.2012-10-06 from 001\_\_elm20141203\_032710\_\_dat00.bin

