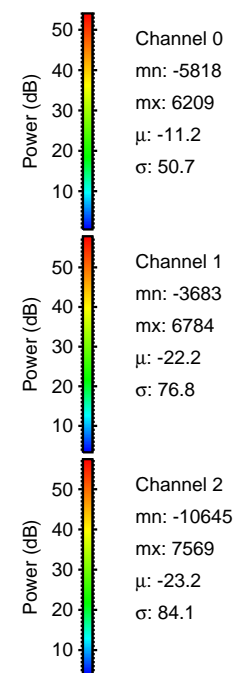
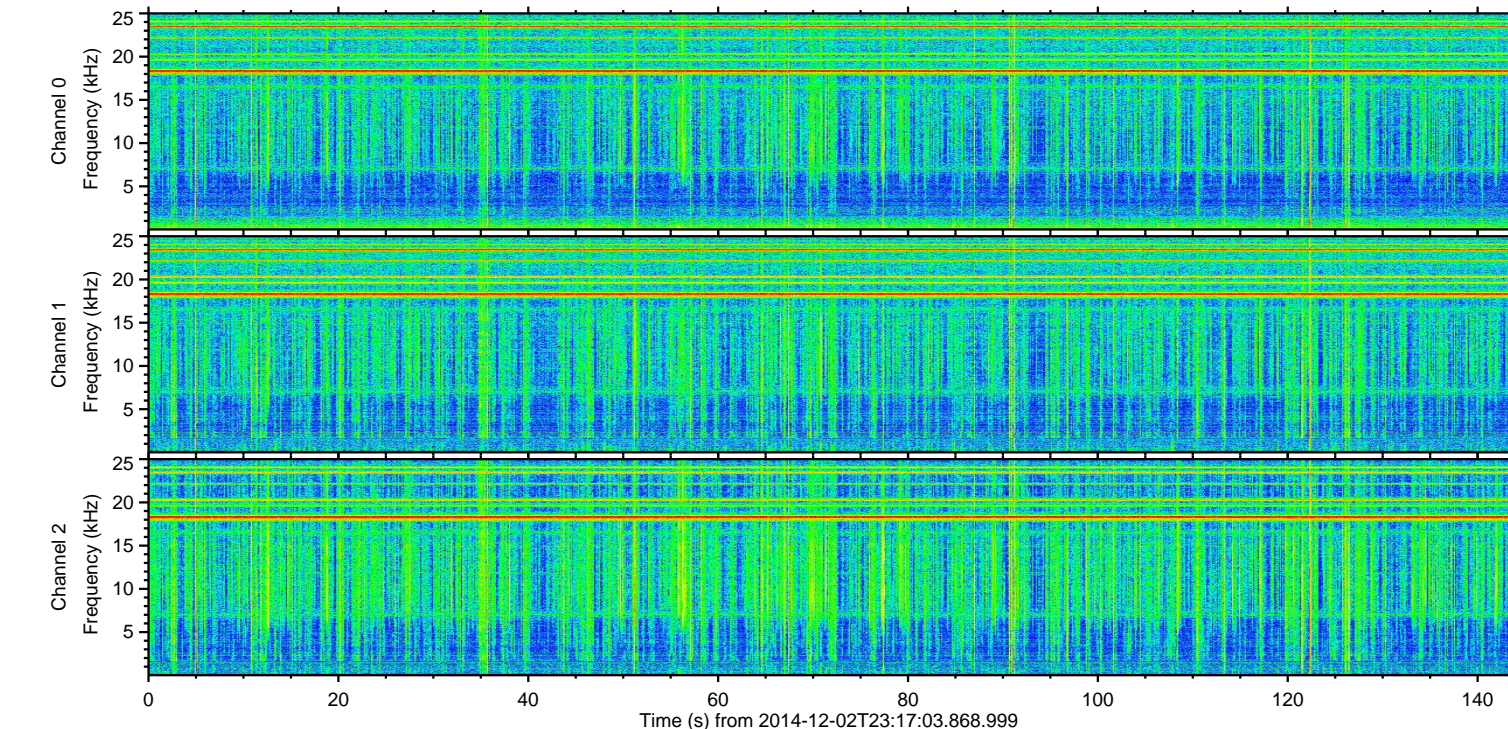
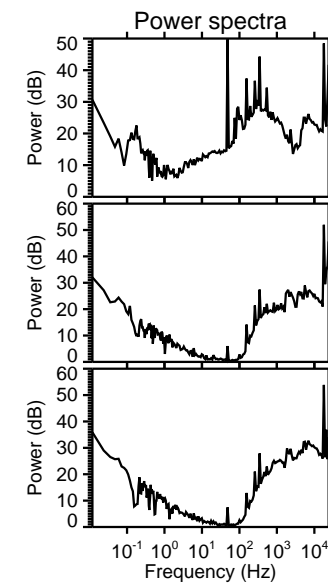
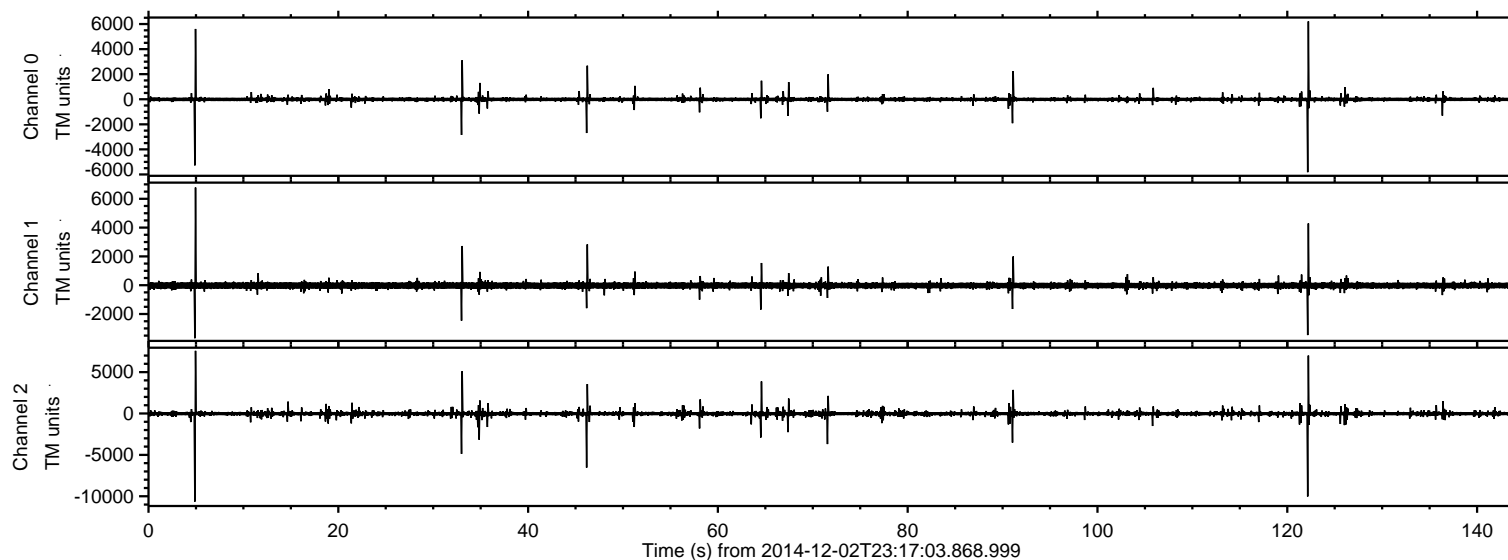


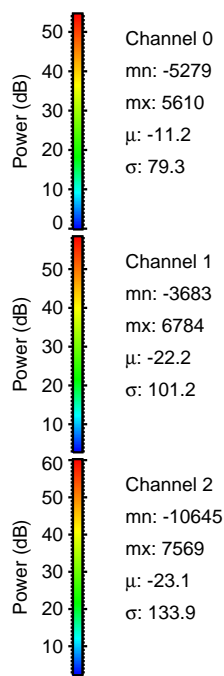
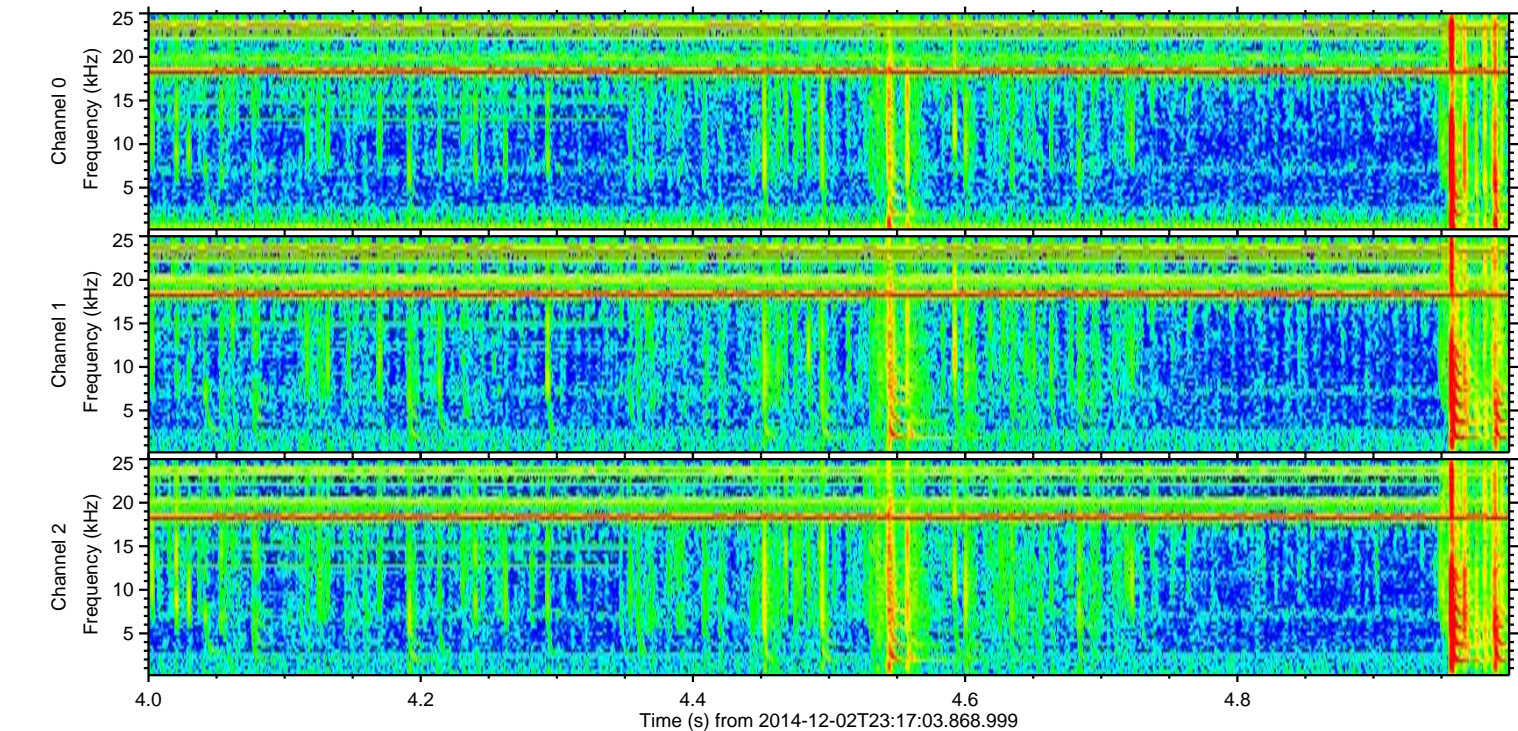
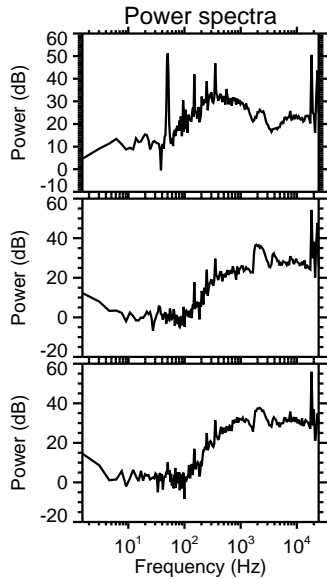
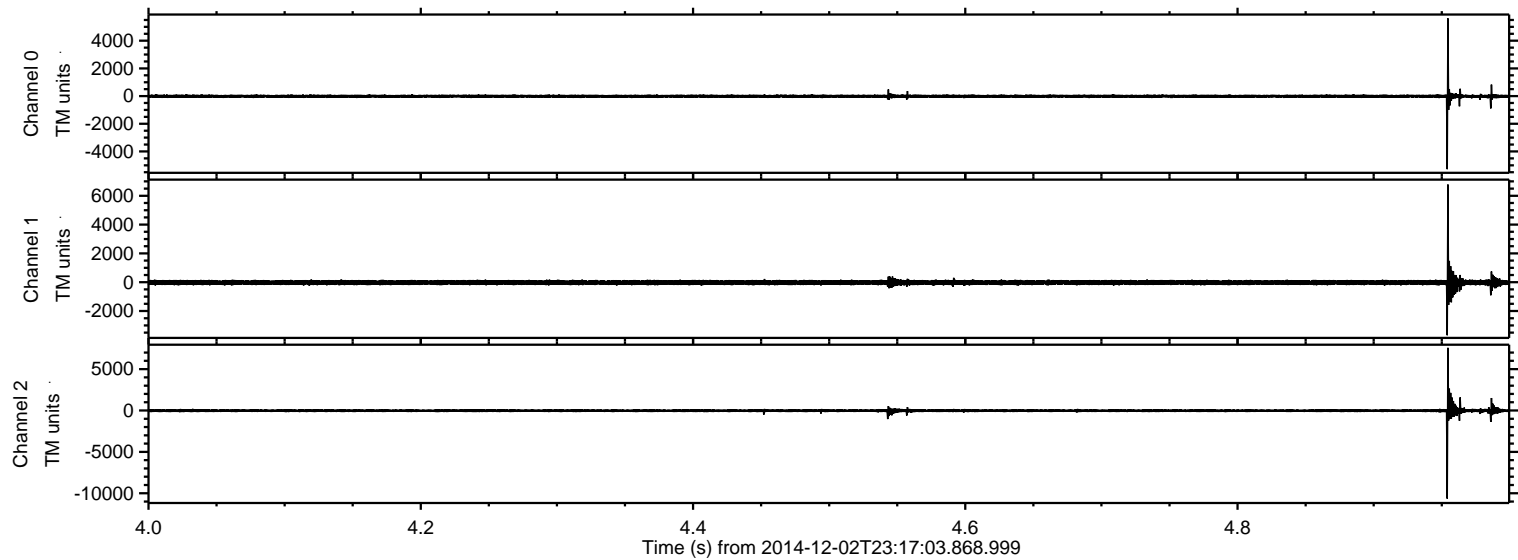
# ELMAVAN 3D WAVEFORMS (Measured data sampled at 50 kHz) 49785 packets of 144 samples from 2014-12-02T23:17:03.868.999.

Processed Wed Dec 3 00:24:32 2014 by ELM ver.2012-10-06 from 001\_\_elm20141202\_231702\_\_dat00.bin





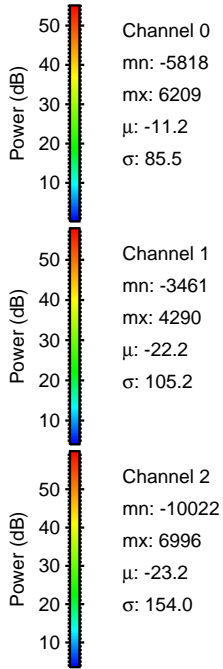
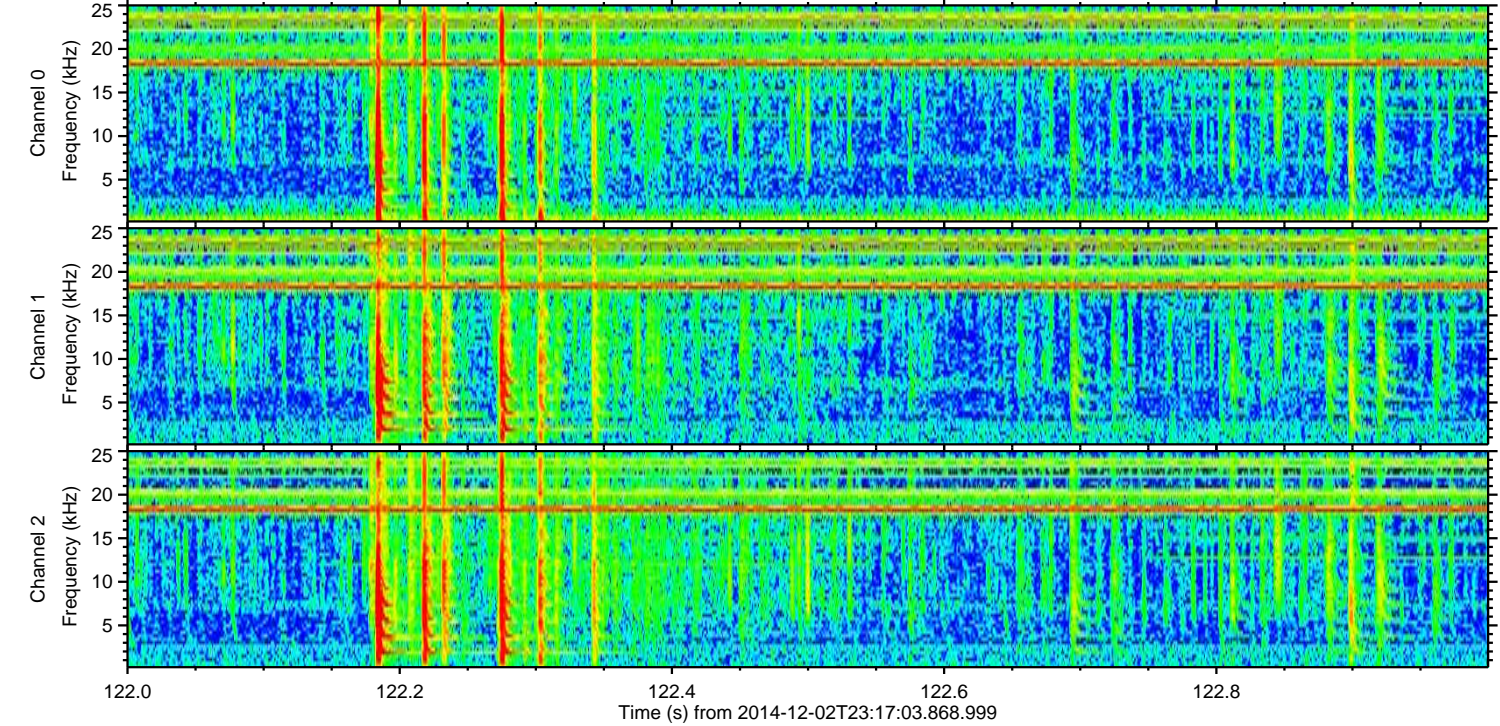
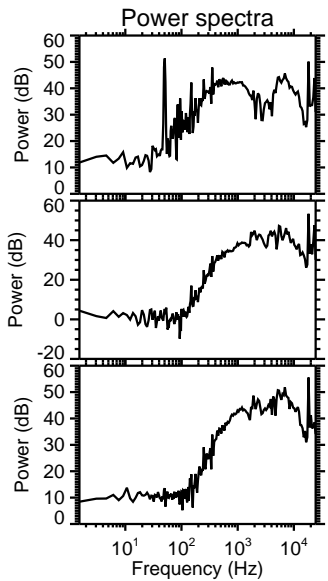
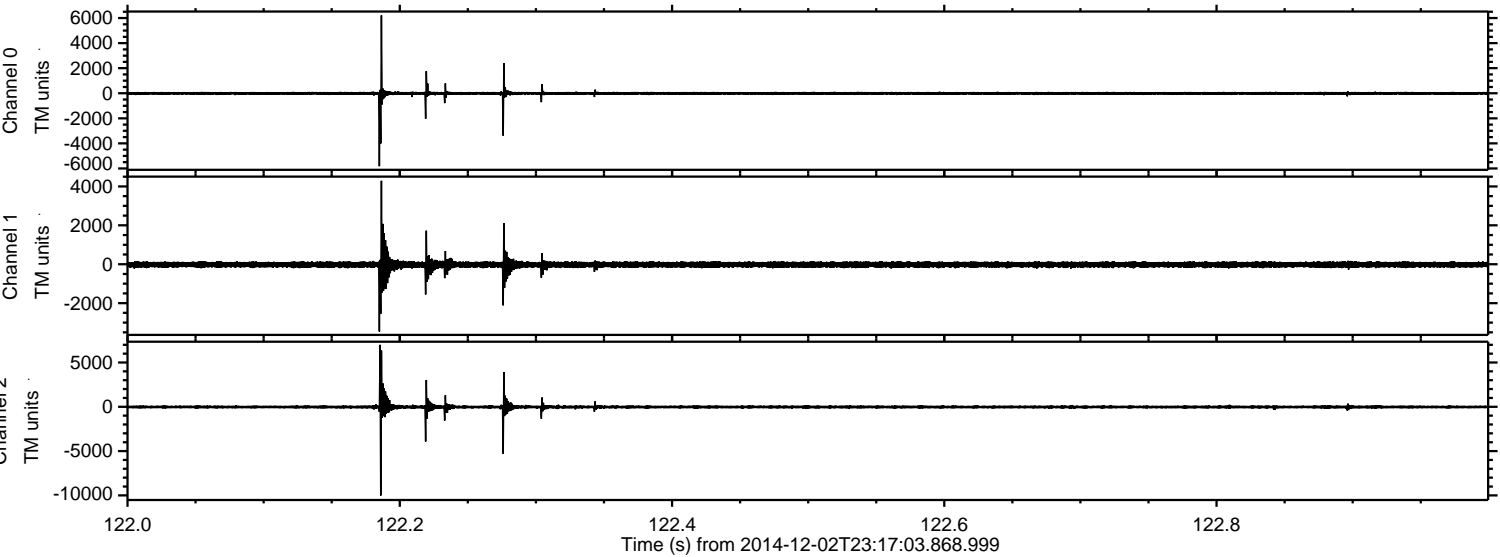
Processed Wed Dec 3 00:24:44 2014 by ELM ver.2012-10-06 from 001\_\_elm20141202\_231702\_\_dat00.bin





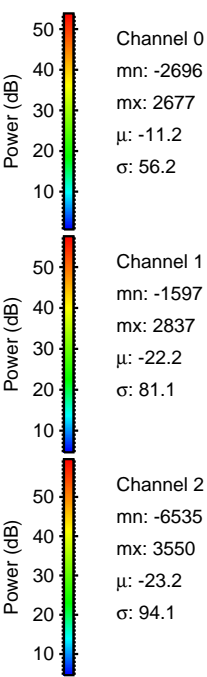
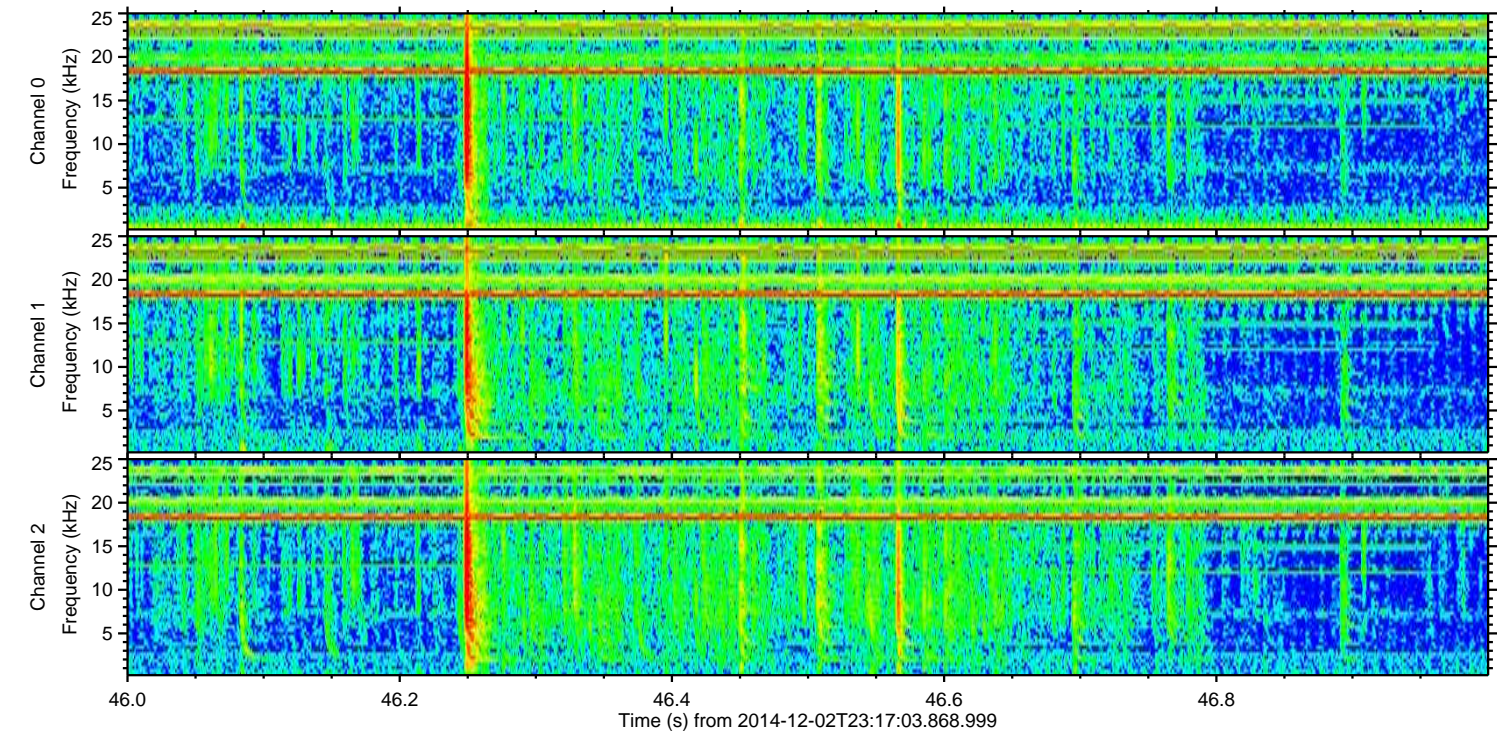
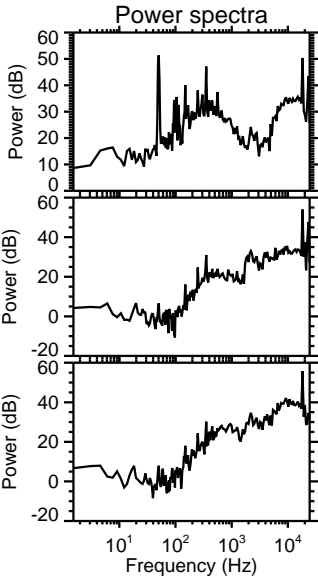
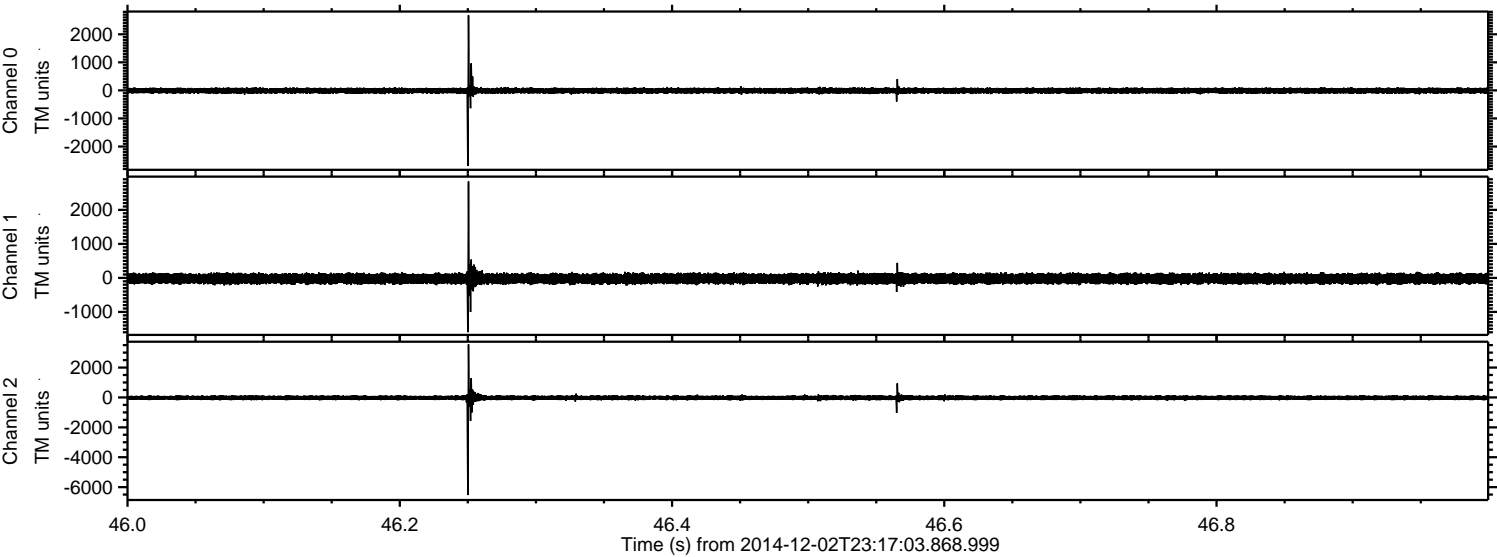
ELMAVAN 3D WAVEFORMS (Measured data sampled at 50 kHz) 49785 packets of 144 samples from 2014-12-02T23:17:03.868.999. Part 123/144

Processed Wed Dec 3 00:24:45 2014 by ELM ver.2012-10-06 from 001\_\_elm20141202\_231702\_\_dat00.bin



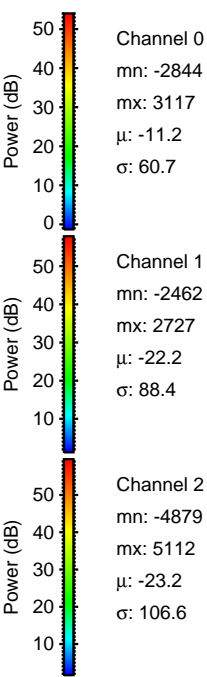
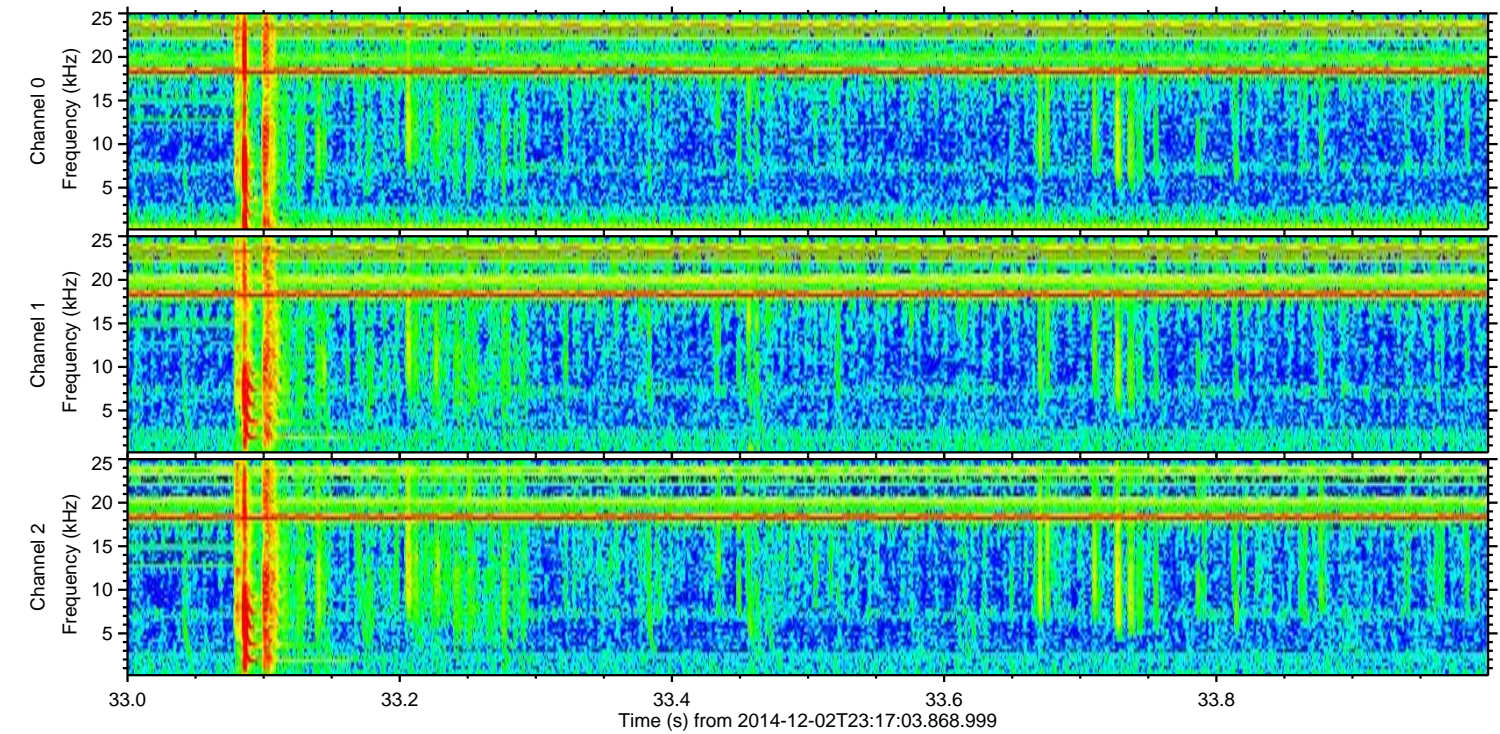
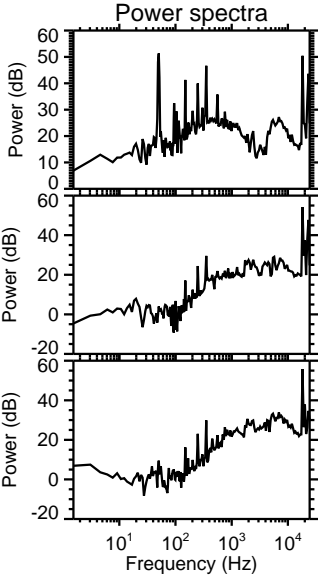
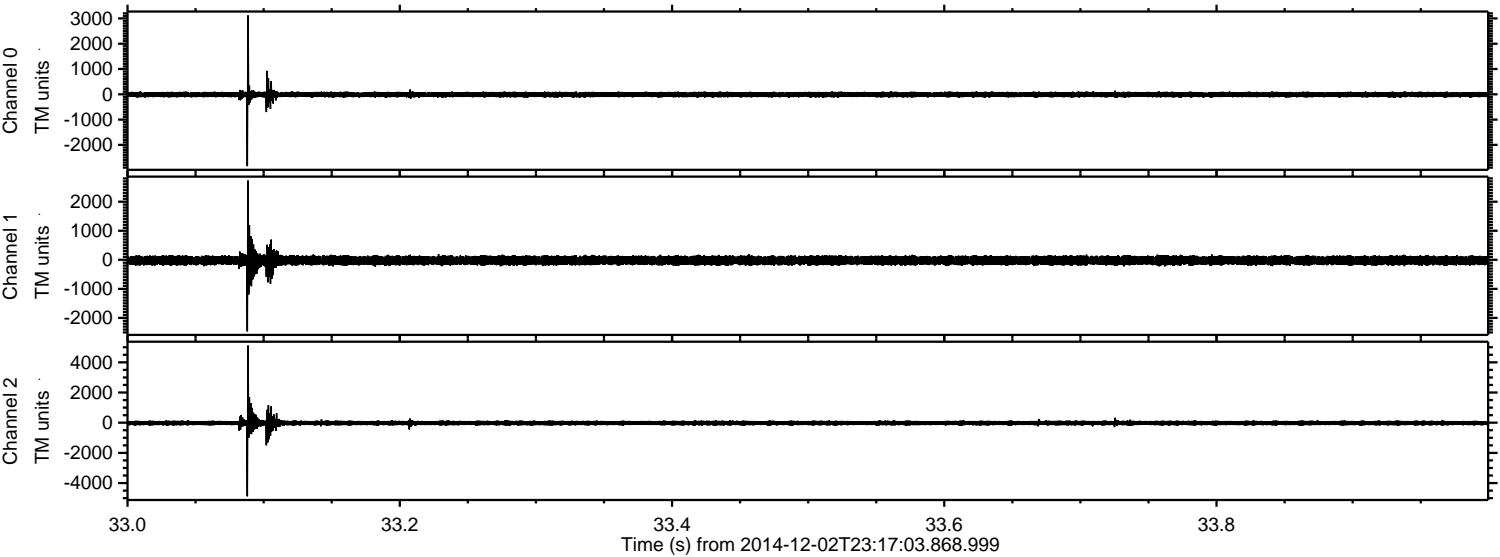


Processed Wed Dec 3 00:24:46 2014 by ELM ver.2012-10-06 from 001\_\_elm20141202\_231702\_\_dat00.bin



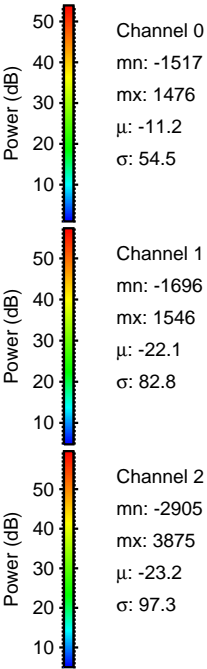
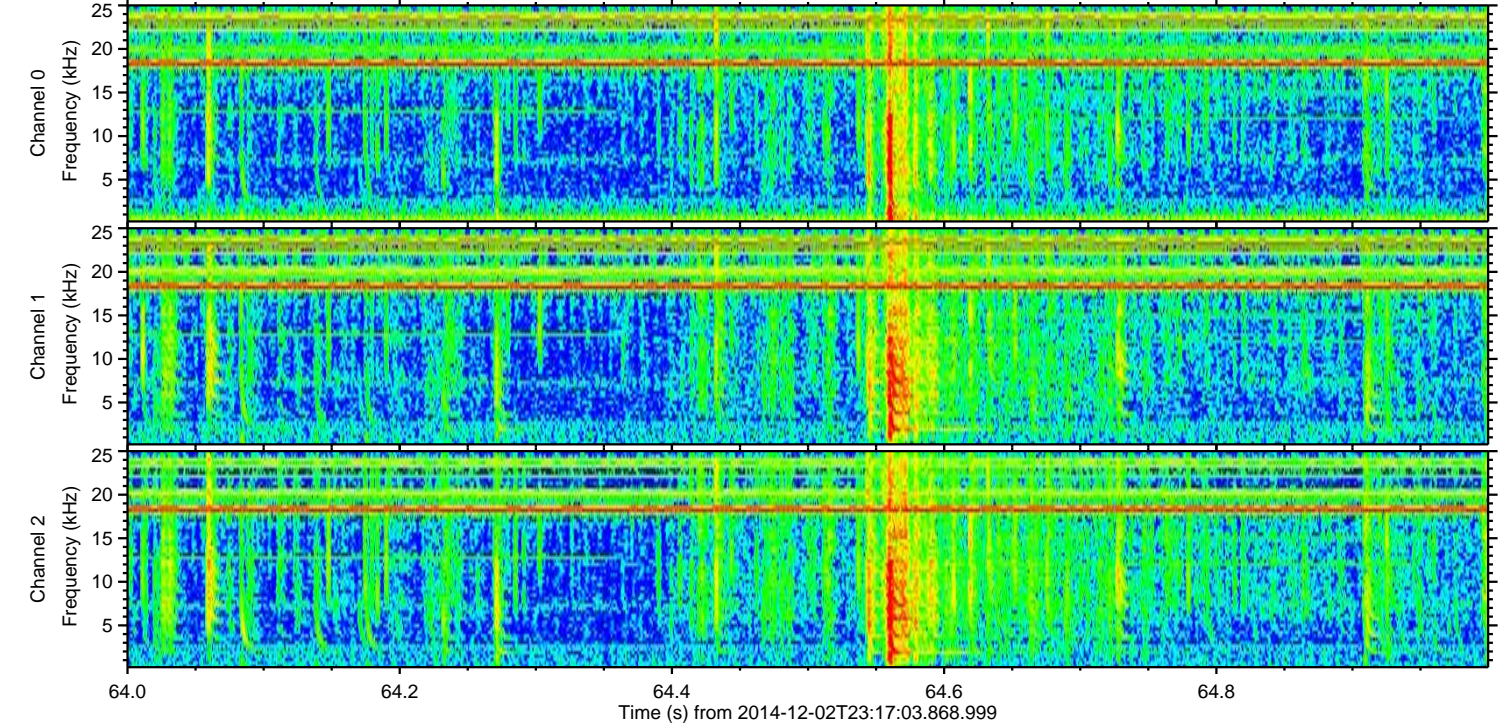
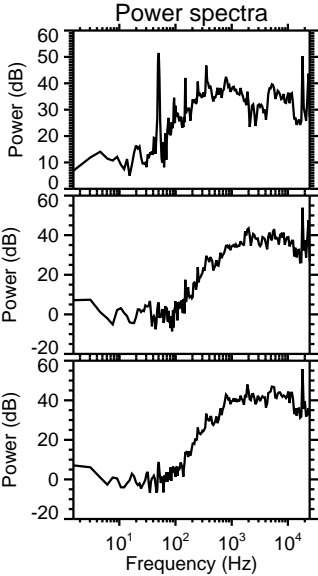
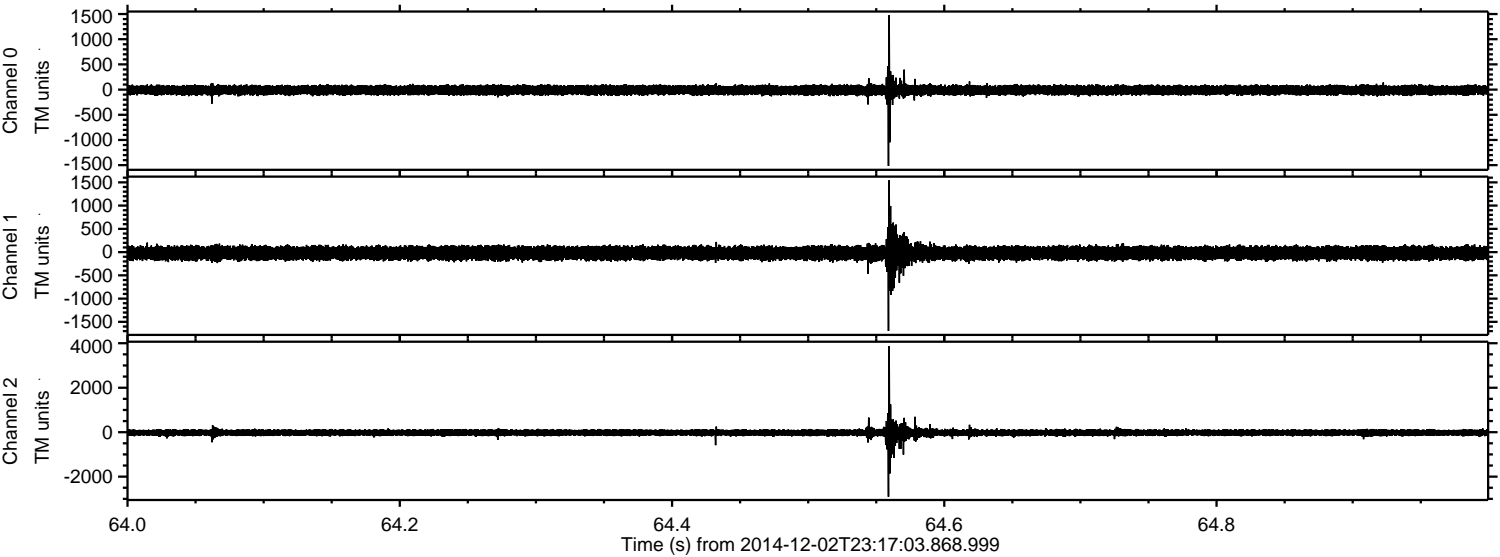


Processed Wed Dec 3 00:24:47 2014 by ELM ver.2012-10-06 from 001\_\_elm20141202\_231702\_\_dat00.bin



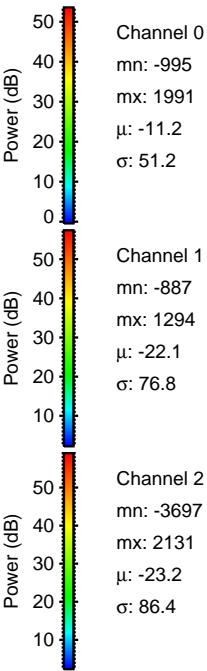
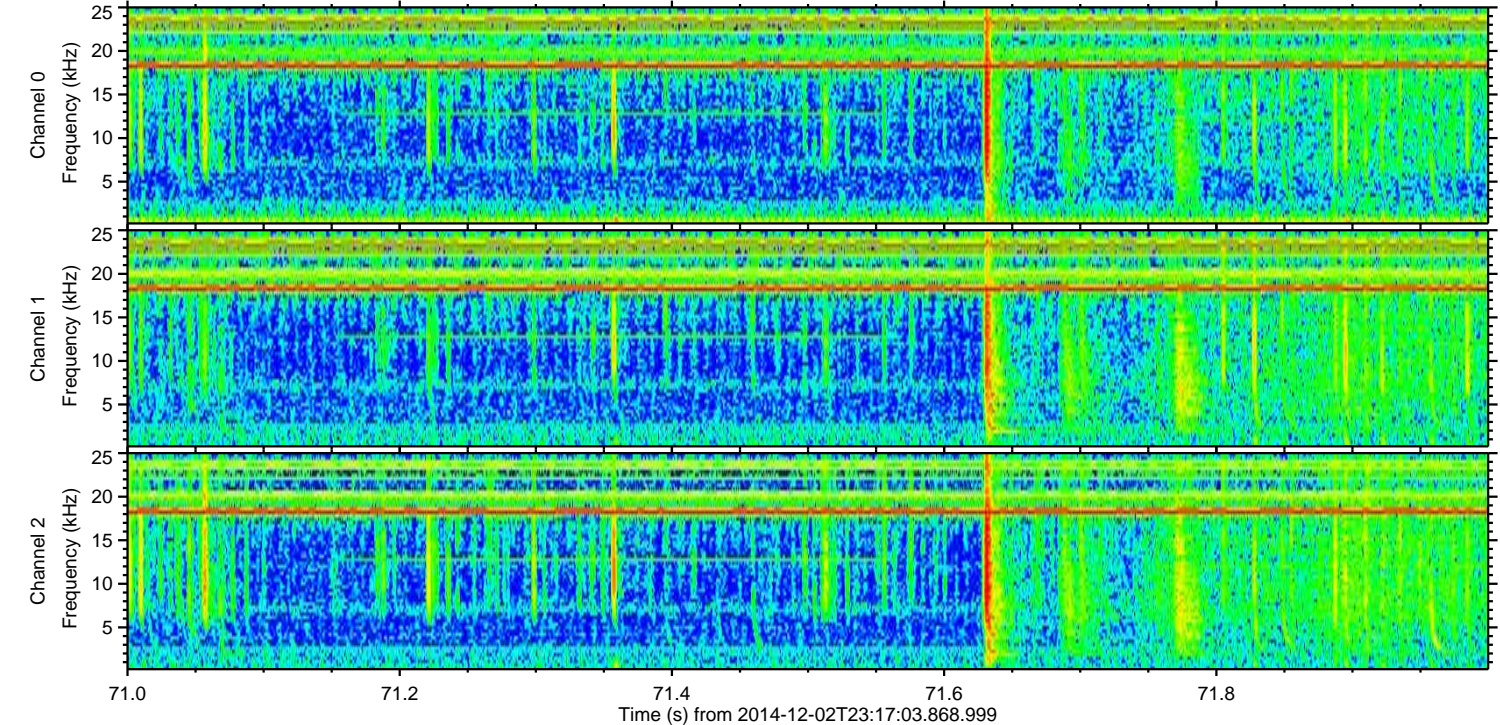
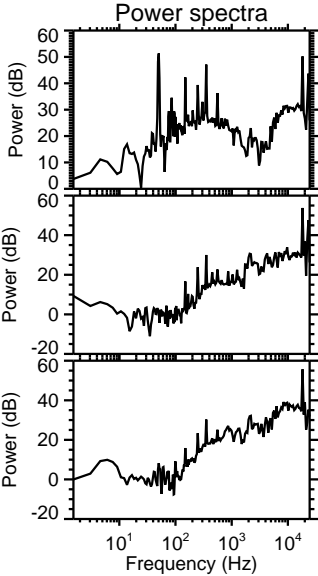
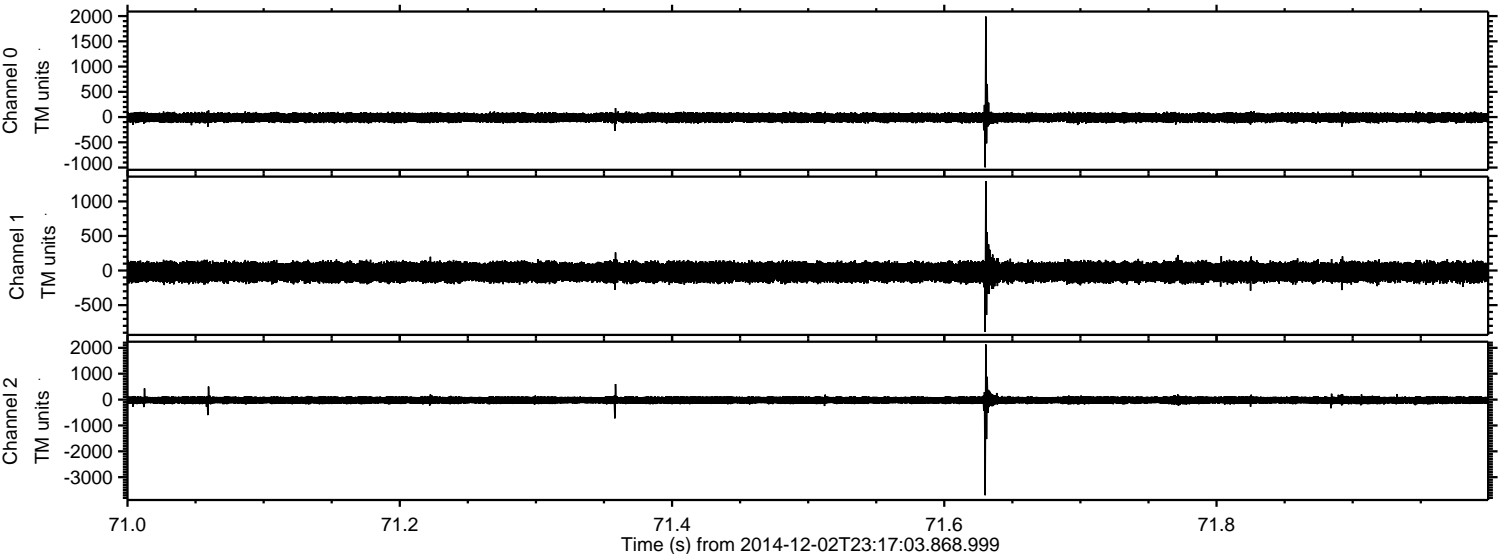


Processed Wed Dec 3 00:24:48 2014 by ELM ver.2012-10-06 from 001\_\_elm20141202\_231702\_\_dat00.bin





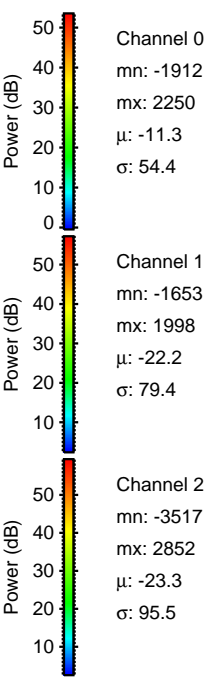
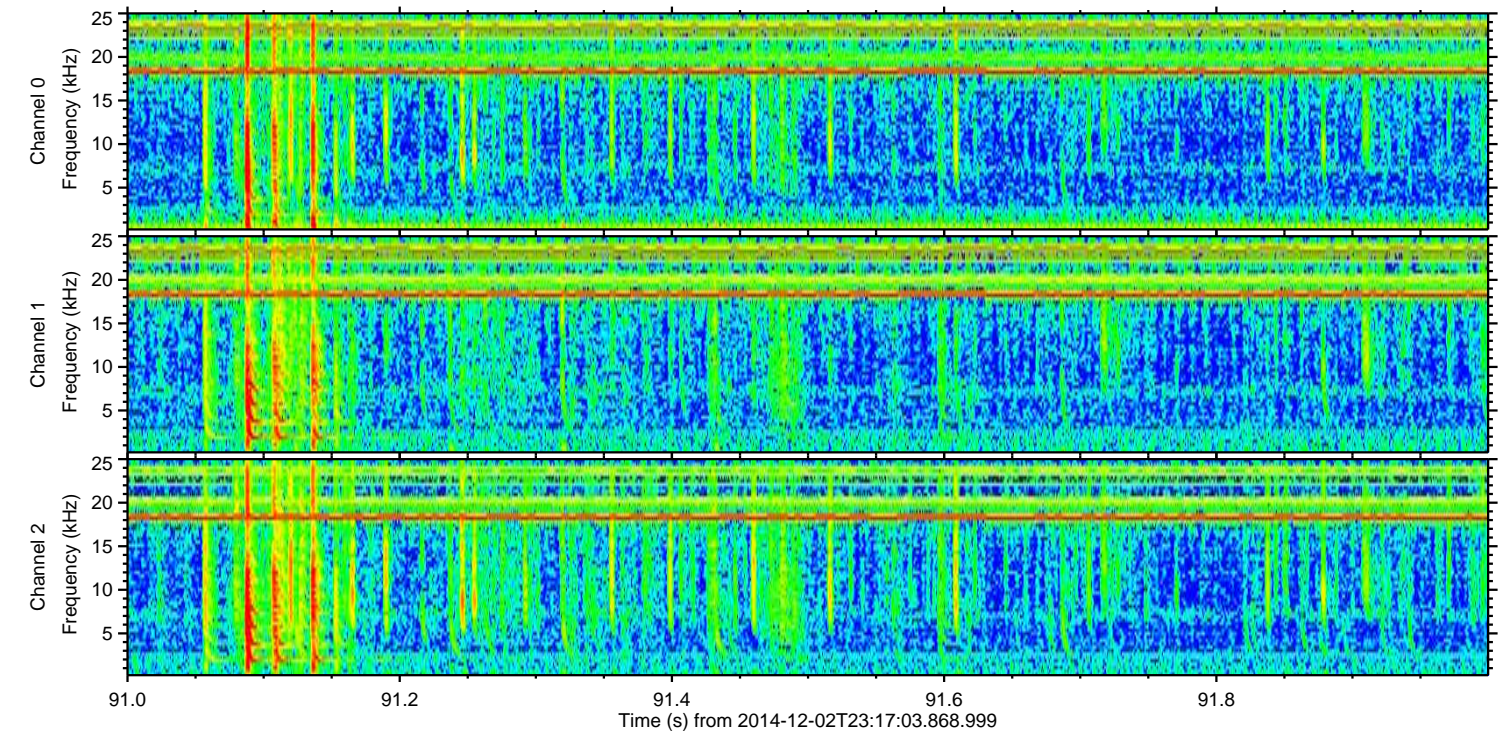
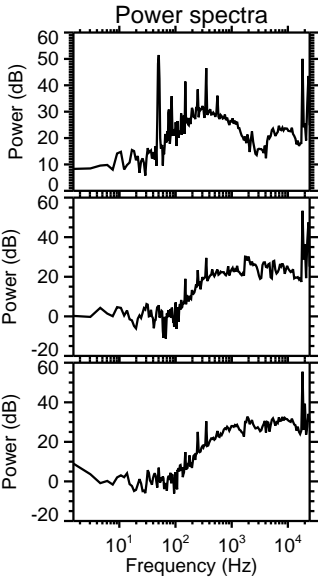
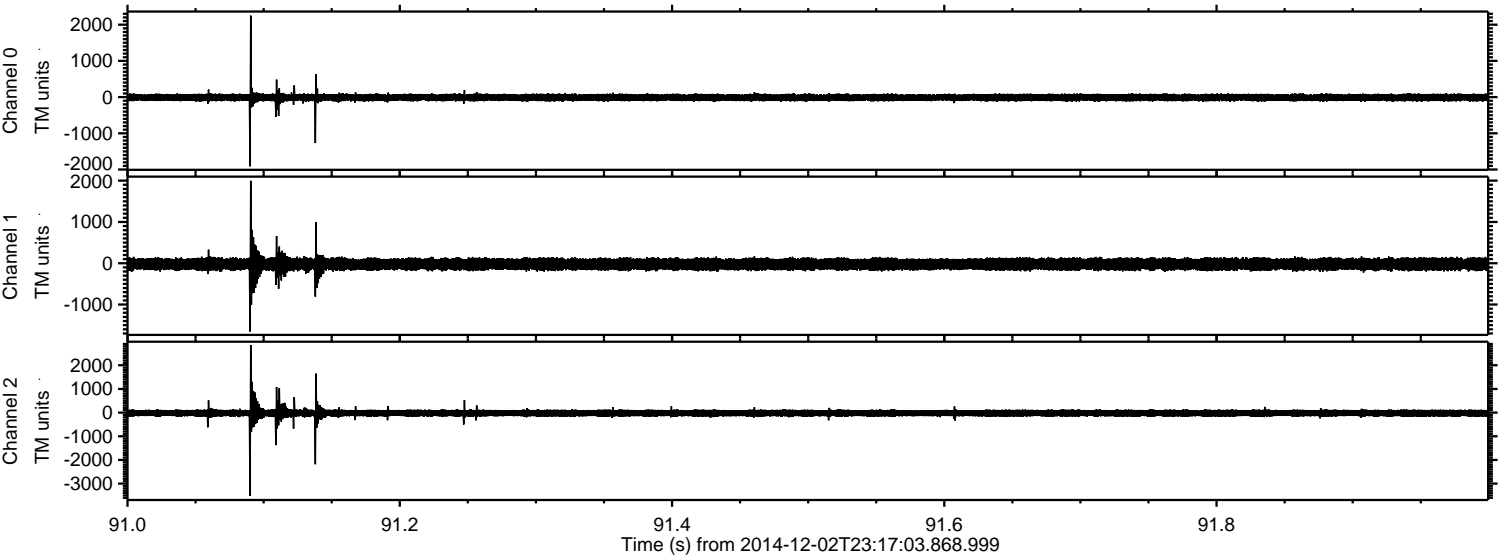
Processed Wed Dec 3 00:24:49 2014 by ELM ver.2012-10-06 from 001\_\_elm20141202\_231702\_\_dat00.bin





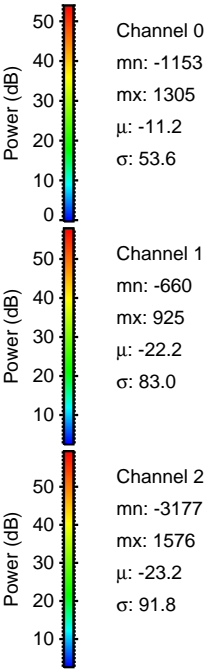
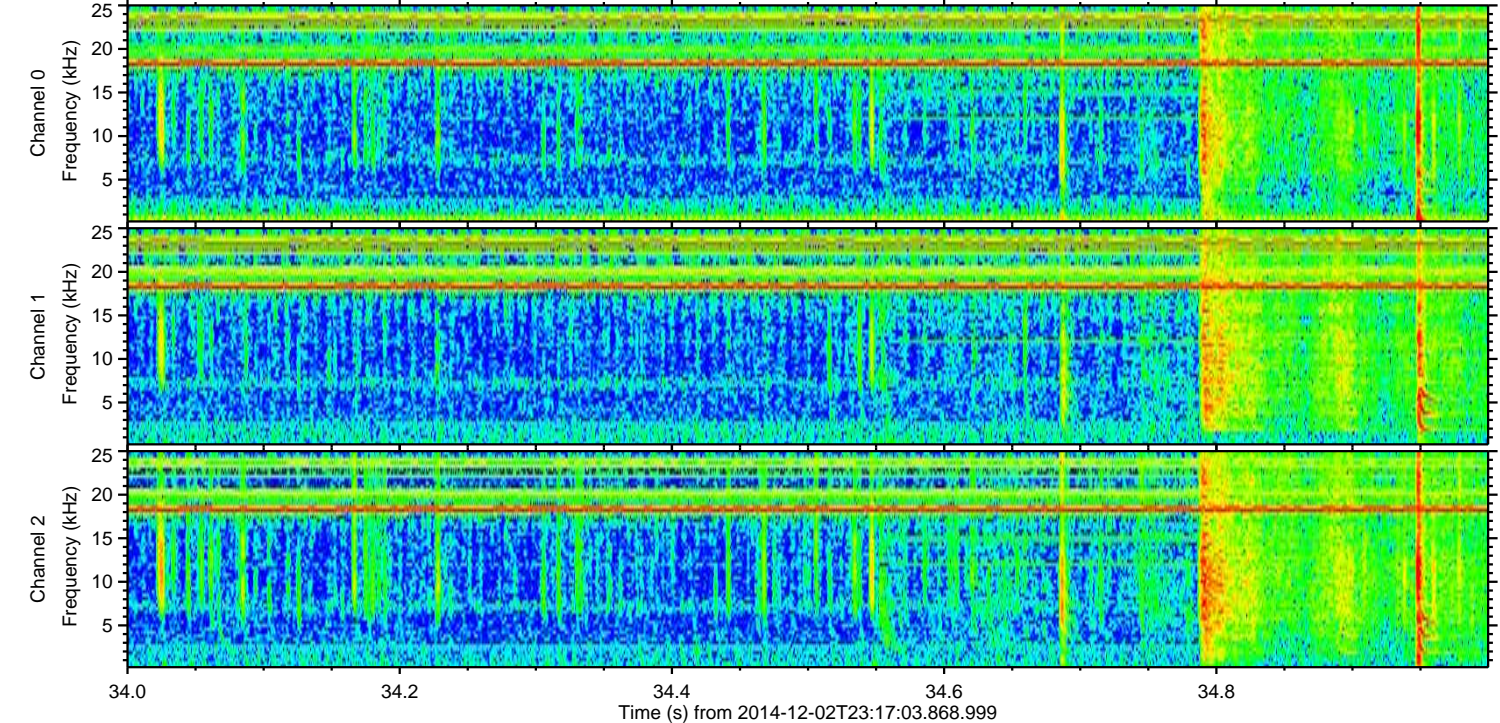
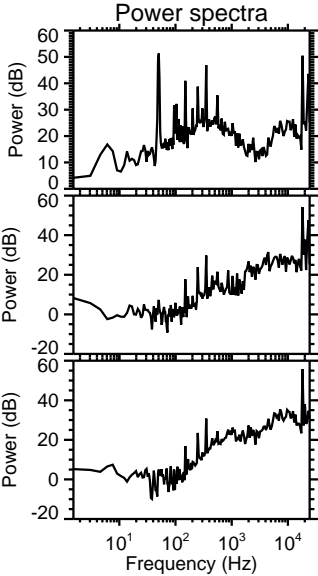
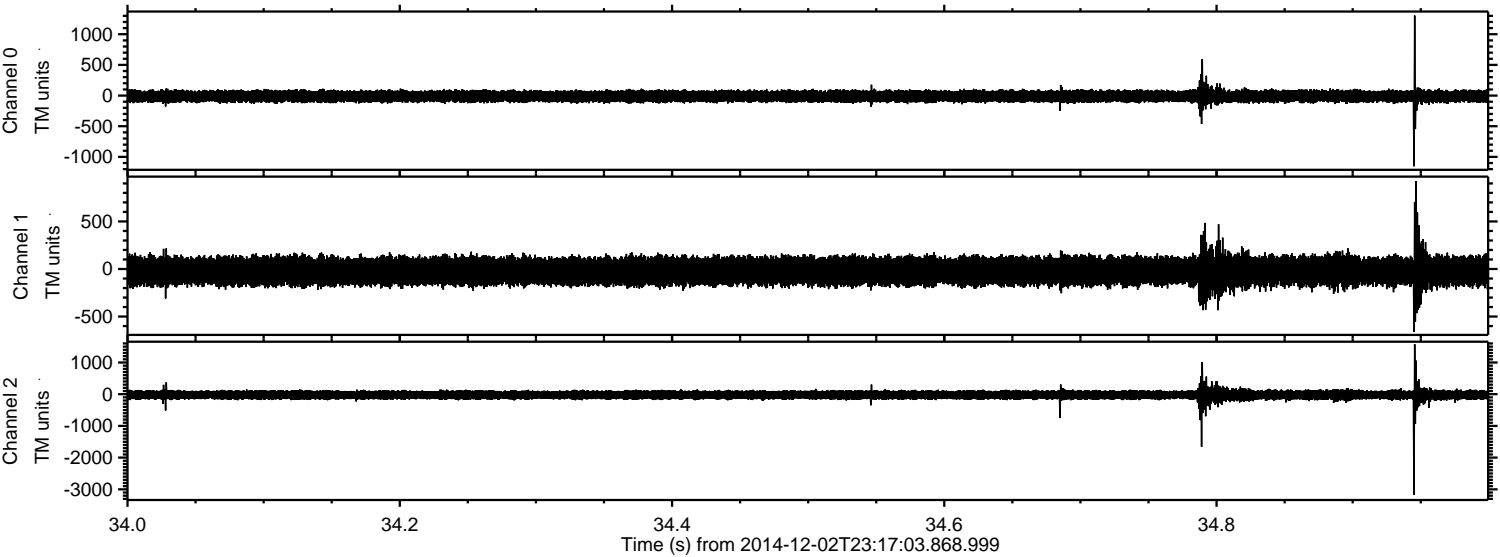
ELMAVAN 3D WAVEFORMS (Measured data sampled at 50 kHz) 49785 packets of 144 samples from 2014-12-02T23:17:03.868.999. Part 92/144

Processed Wed Dec 3 00:24:49 2014 by ELM ver.2012-10-06 from 001\_\_elm20141202\_231702\_\_dat00.bin



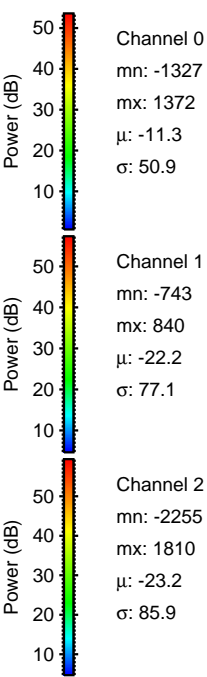
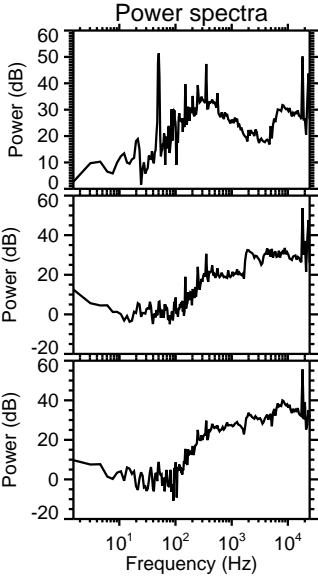
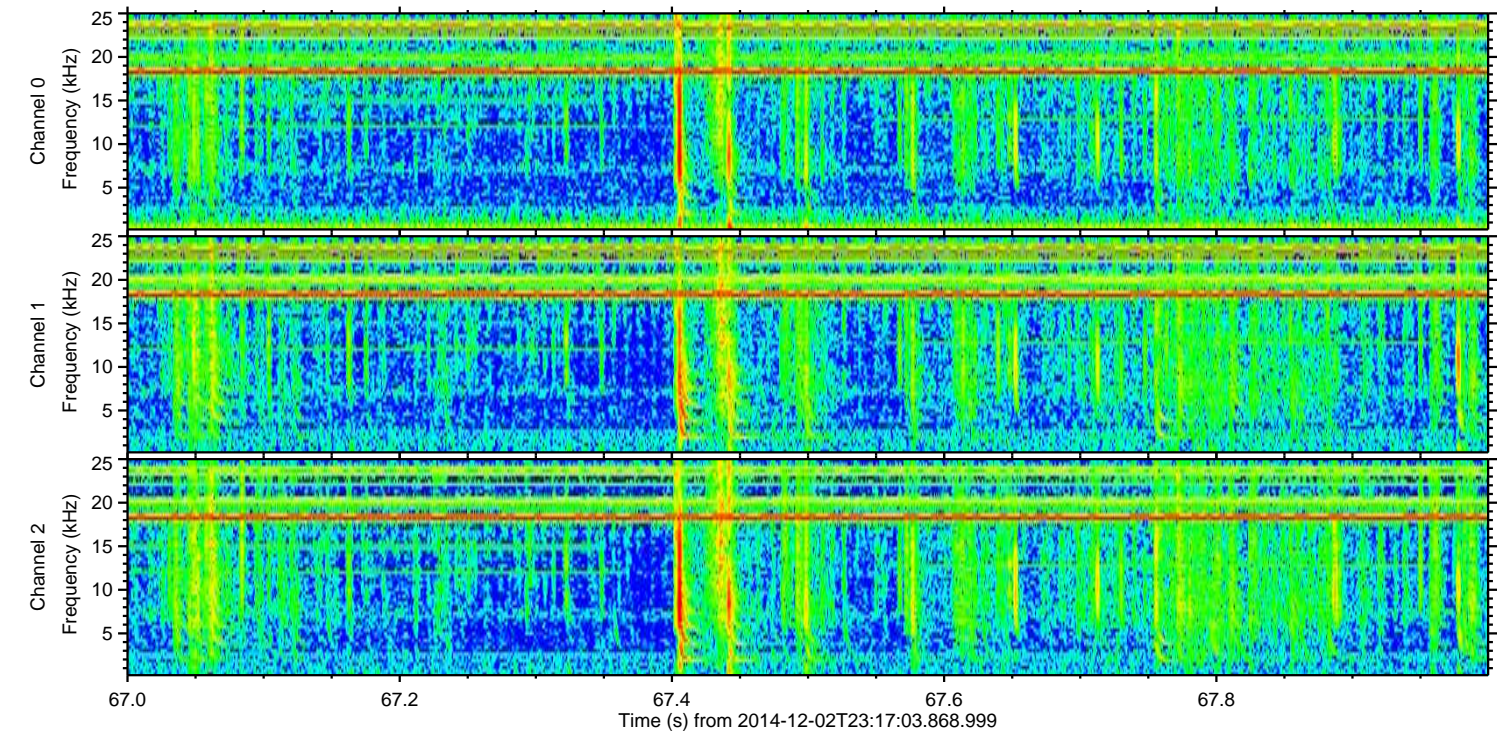
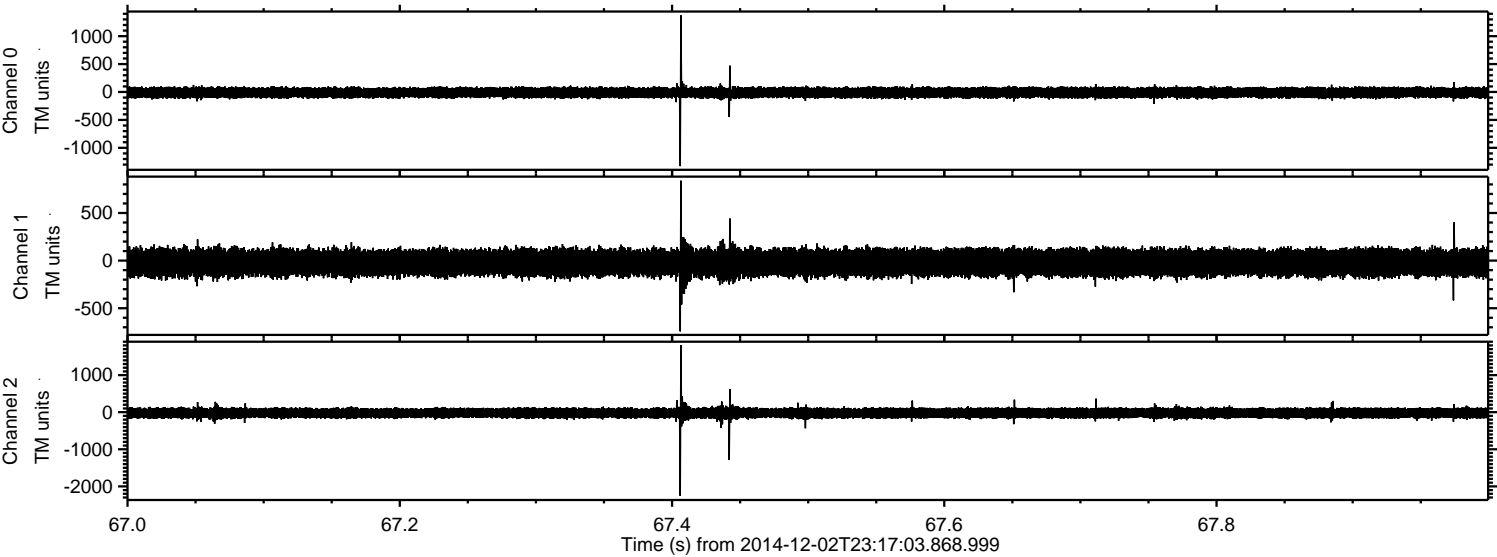


Processed Wed Dec 3 00:24:50 2014 by ELM ver.2012-10-06 from 001\_\_elm20141202\_231702\_\_dat00.bin





Processed Wed Dec 3 00:24:51 2014 by ELM ver.2012-10-06 from 001\_\_elm20141202\_231702\_\_dat00.bin



Power spectra

Channel 0  
mn: -1327  
mx: 1372  
 $\mu$ : -11.3  
 $\sigma$ : 50.9

Channel 1  
mn: -743  
mx: 840  
 $\mu$ : -22.2  
 $\sigma$ : 77.1

Channel 2  
mn: -2255  
mx: 1810  
 $\mu$ : -23.2  
 $\sigma$ : 85.9



Processed Wed Dec 3 00:24:52 2014 by ELM ver.2012-10-06 from 001\_\_elm20141202\_231702\_\_dat00.bin

