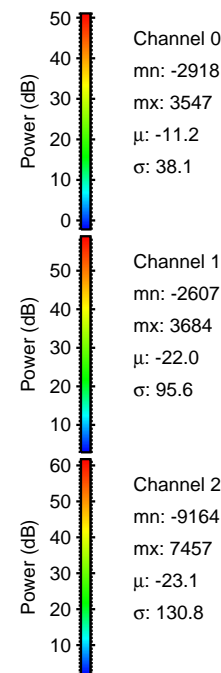
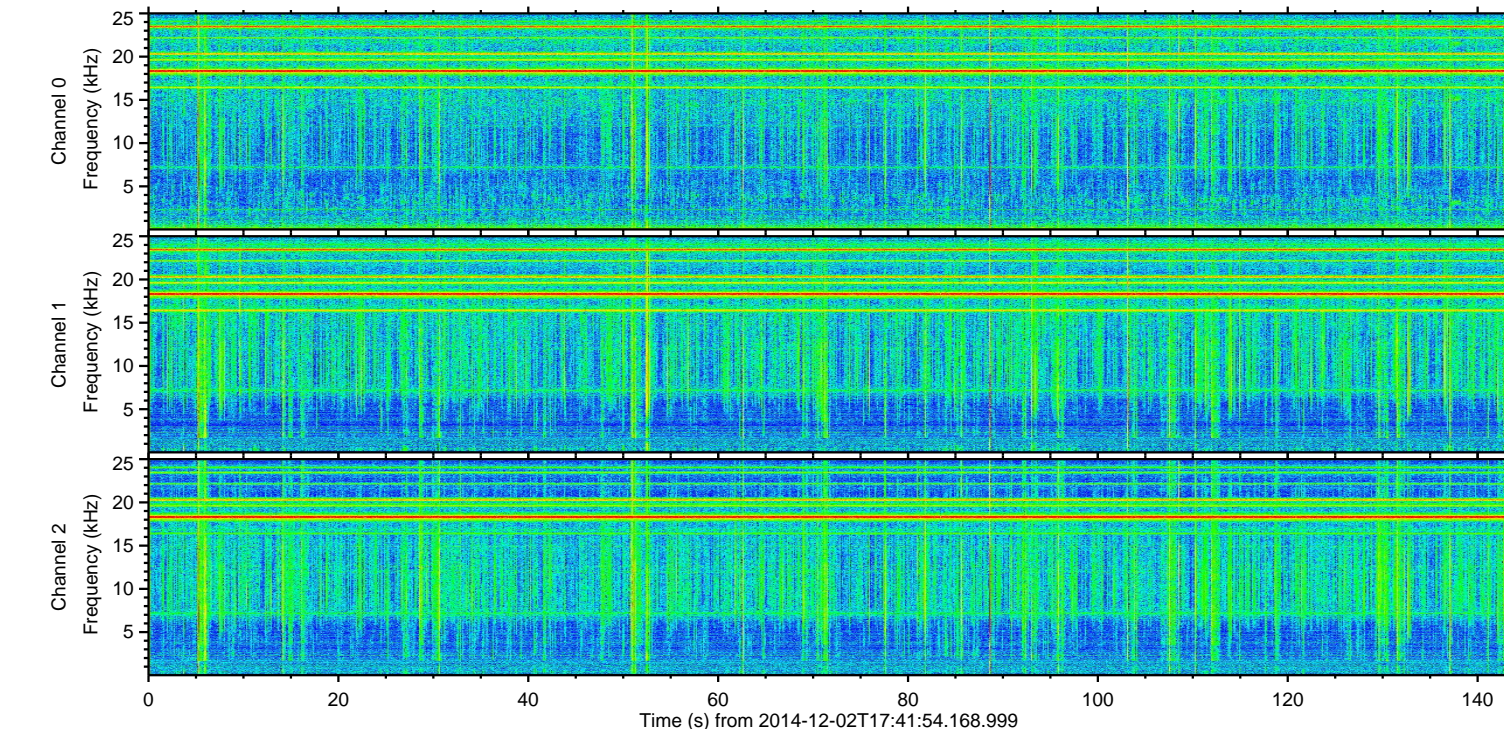
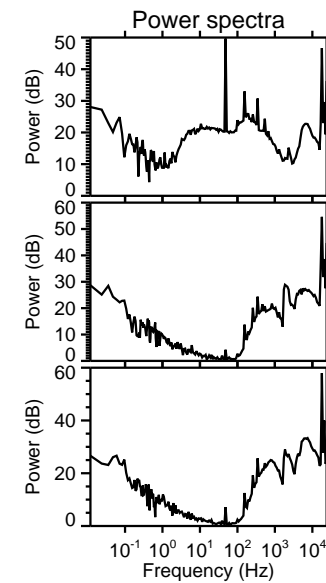
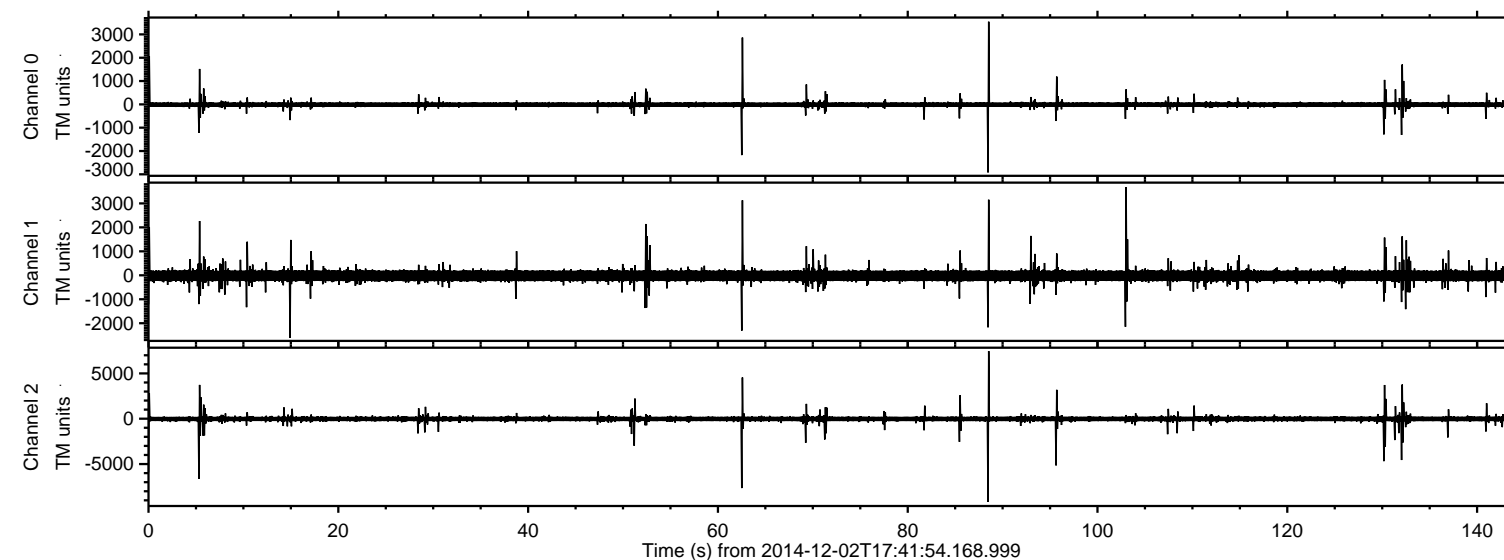


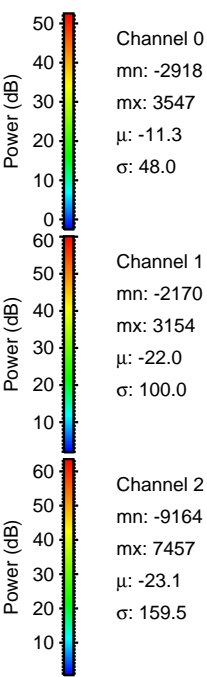
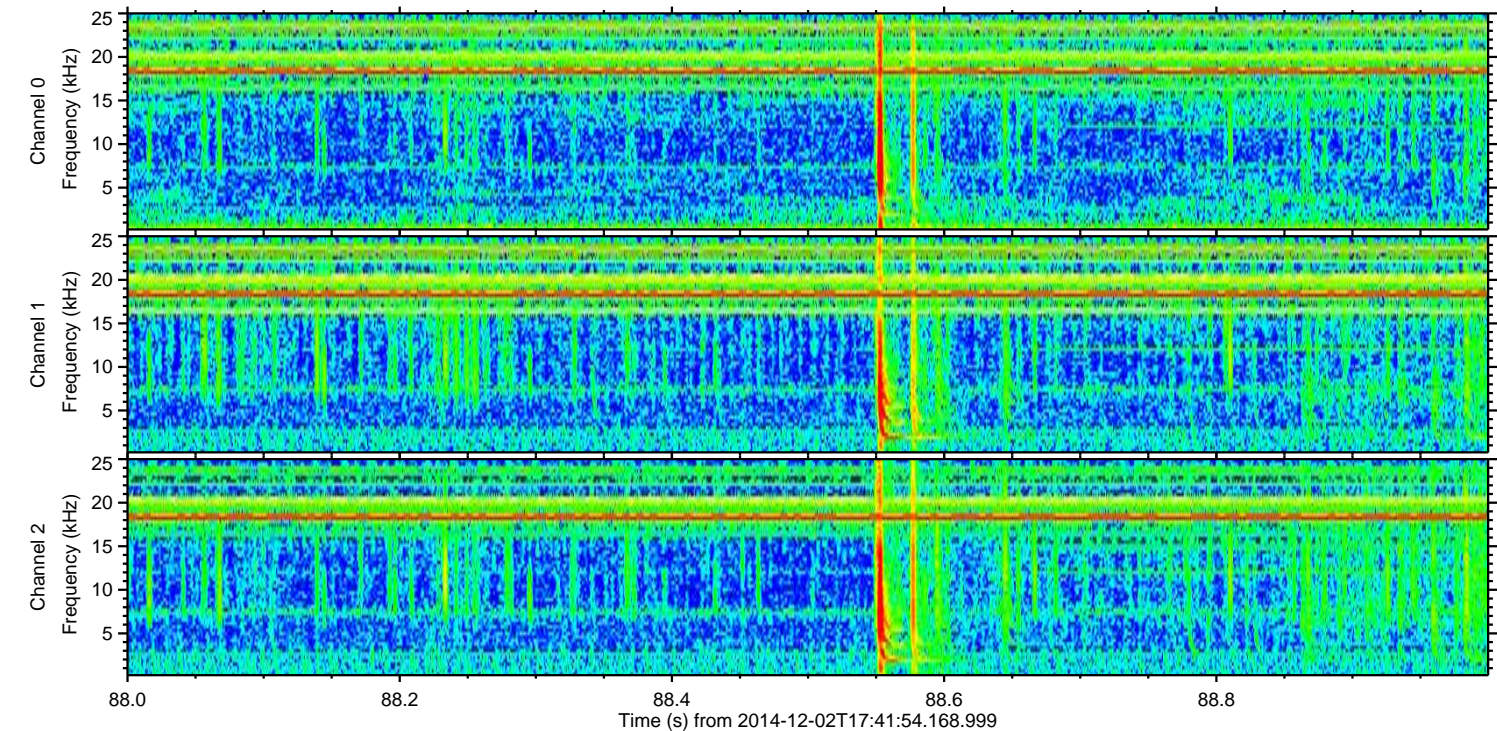
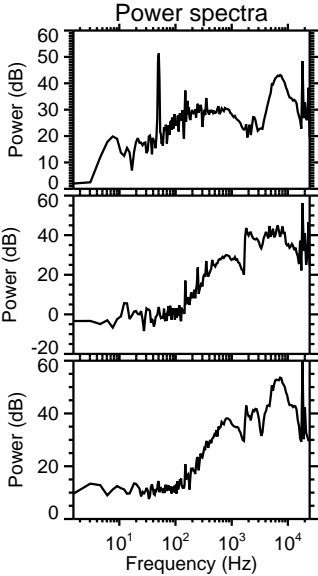
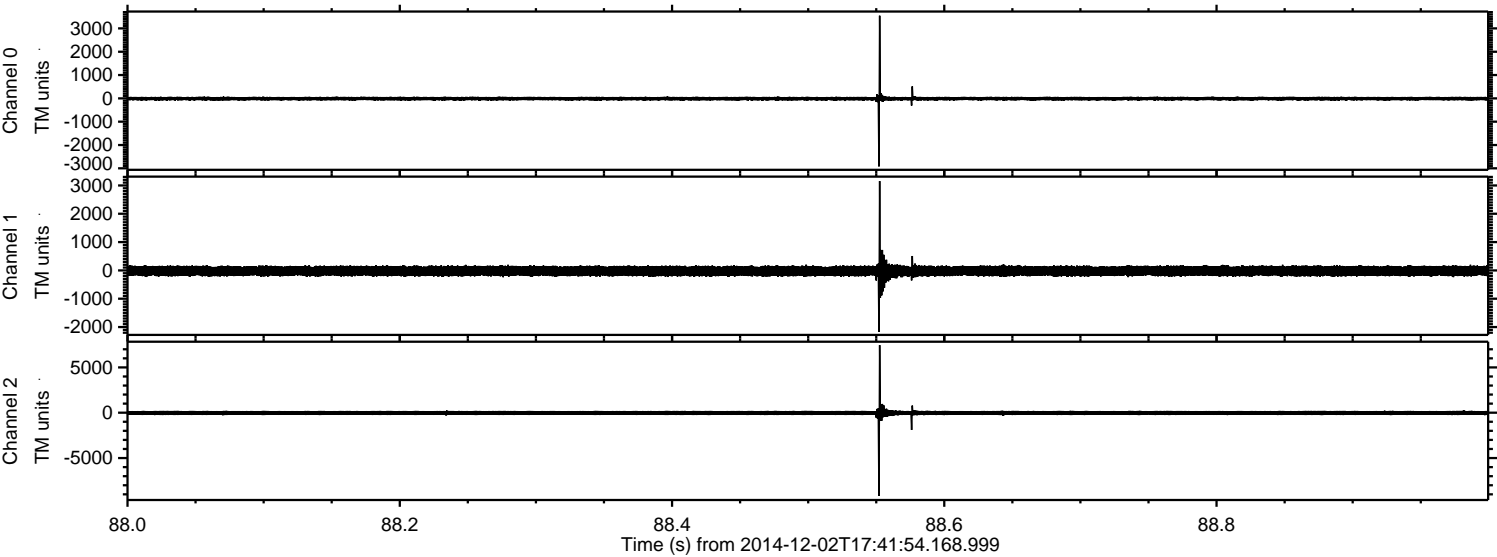
# ELMAVAN 3D WAVEFORMS (Measured data sampled at 50 kHz) 49783 packets of 144 samples from 2014-12-02T17:41:54.168.999.

Processed Tue Dec 2 18:48:28 2014 by ELM ver.2012-10-06 from 001\_\_elm20141202\_174153\_\_dat00.bin





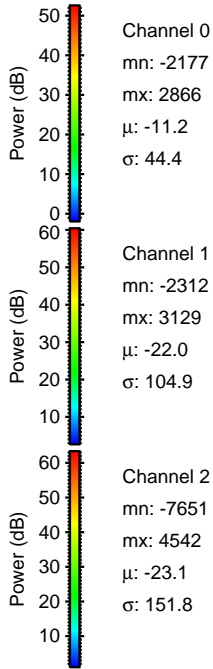
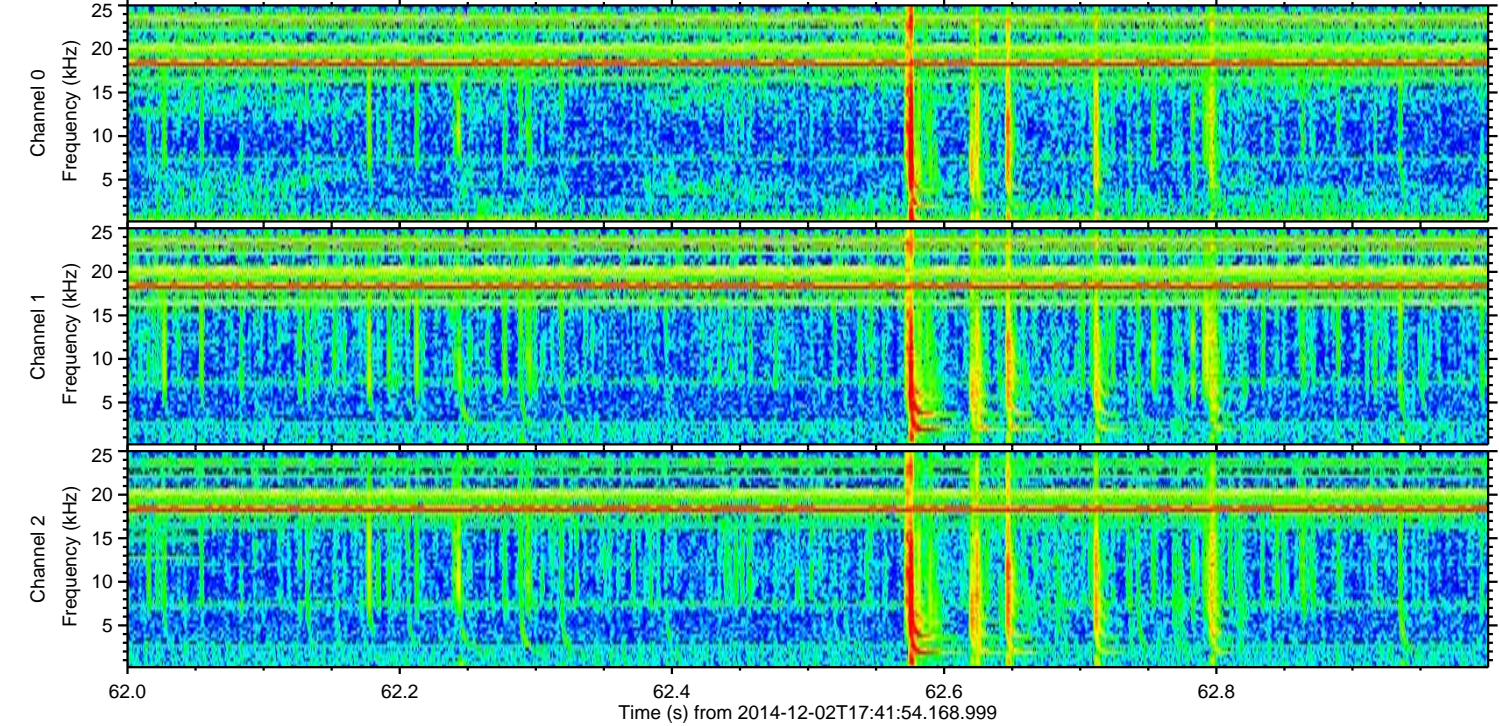
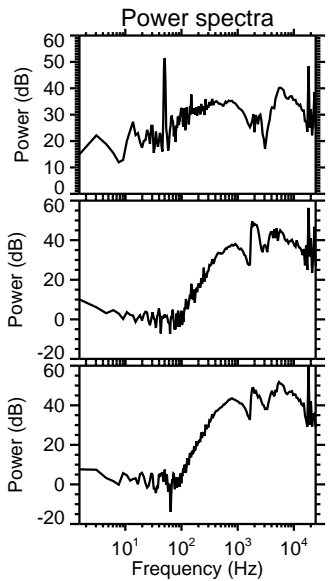
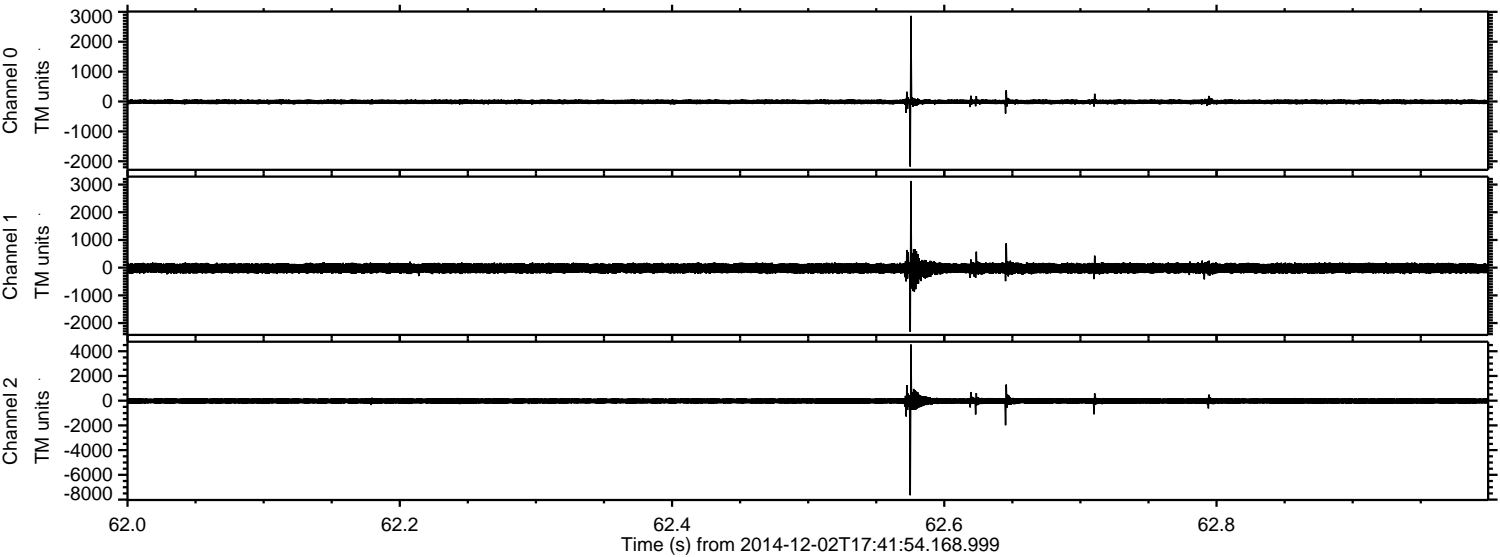
Processed Tue Dec 2 18:48:39 2014 by ELM ver.2012-10-06 from 001\_\_elm20141202\_174153\_\_dat00.bin





ELMAVAN 3D WAVEFORMS (Measured data sampled at 50 kHz) 49783 packets of 144 samples from 2014-12-02T17:41:54.168.999. Part 63/144

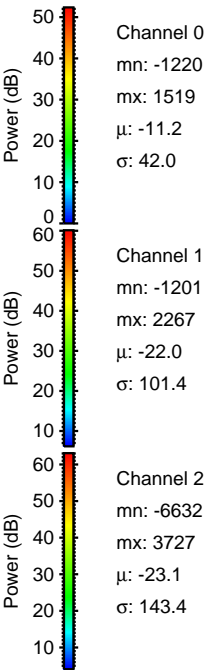
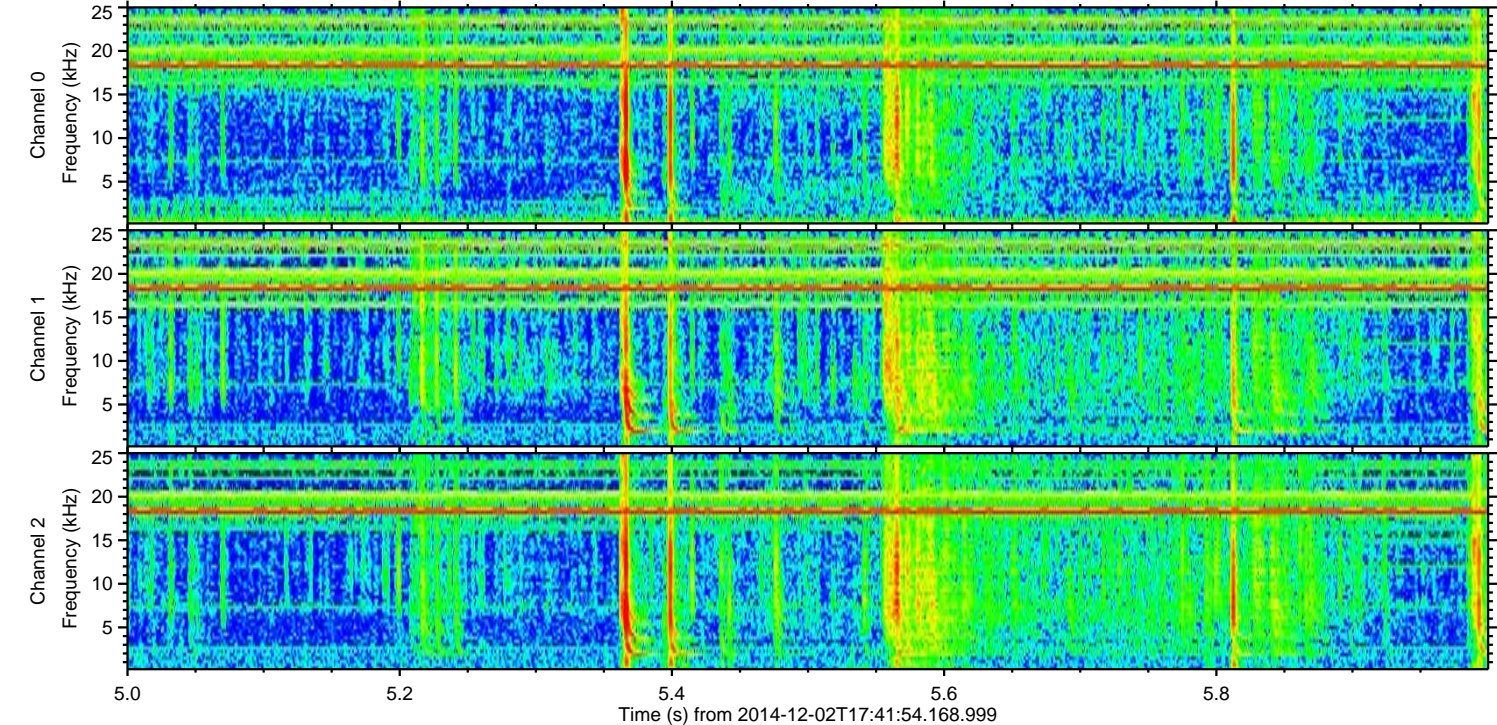
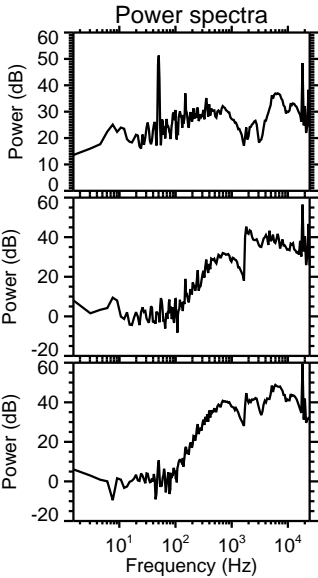
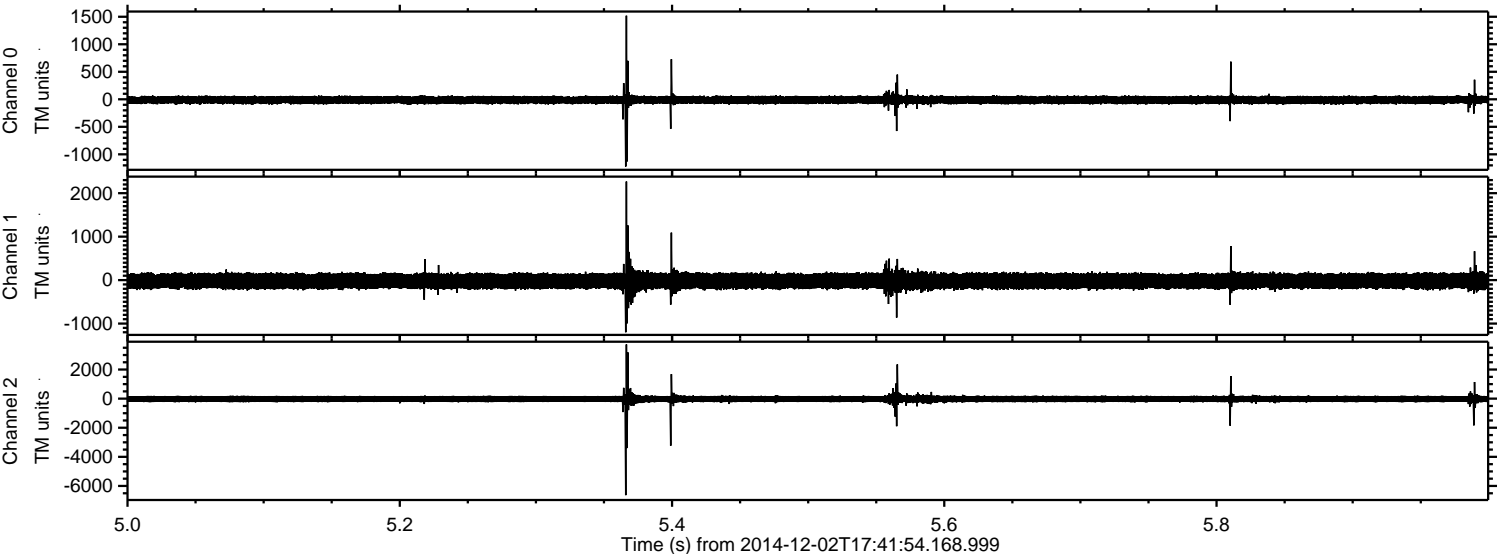
Processed Tue Dec 2 18:48:40 2014 by ELM ver.2012-10-06 from 001\_\_elm20141202\_174153\_\_dat00.bin





ELMAVAN 3D WAVEFORMS (Measured data sampled at 50 kHz) 49783 packets of 144 samples from 2014-12-02T17:41:54.168.999. Part 6/144

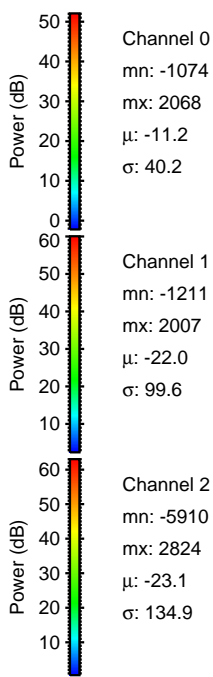
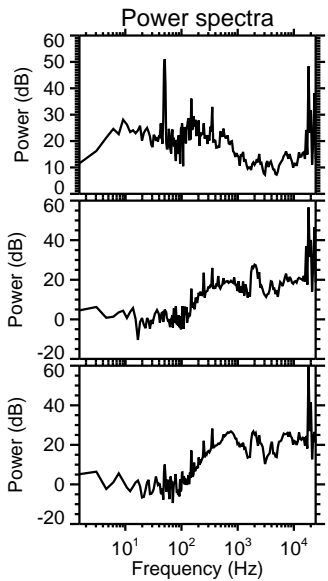
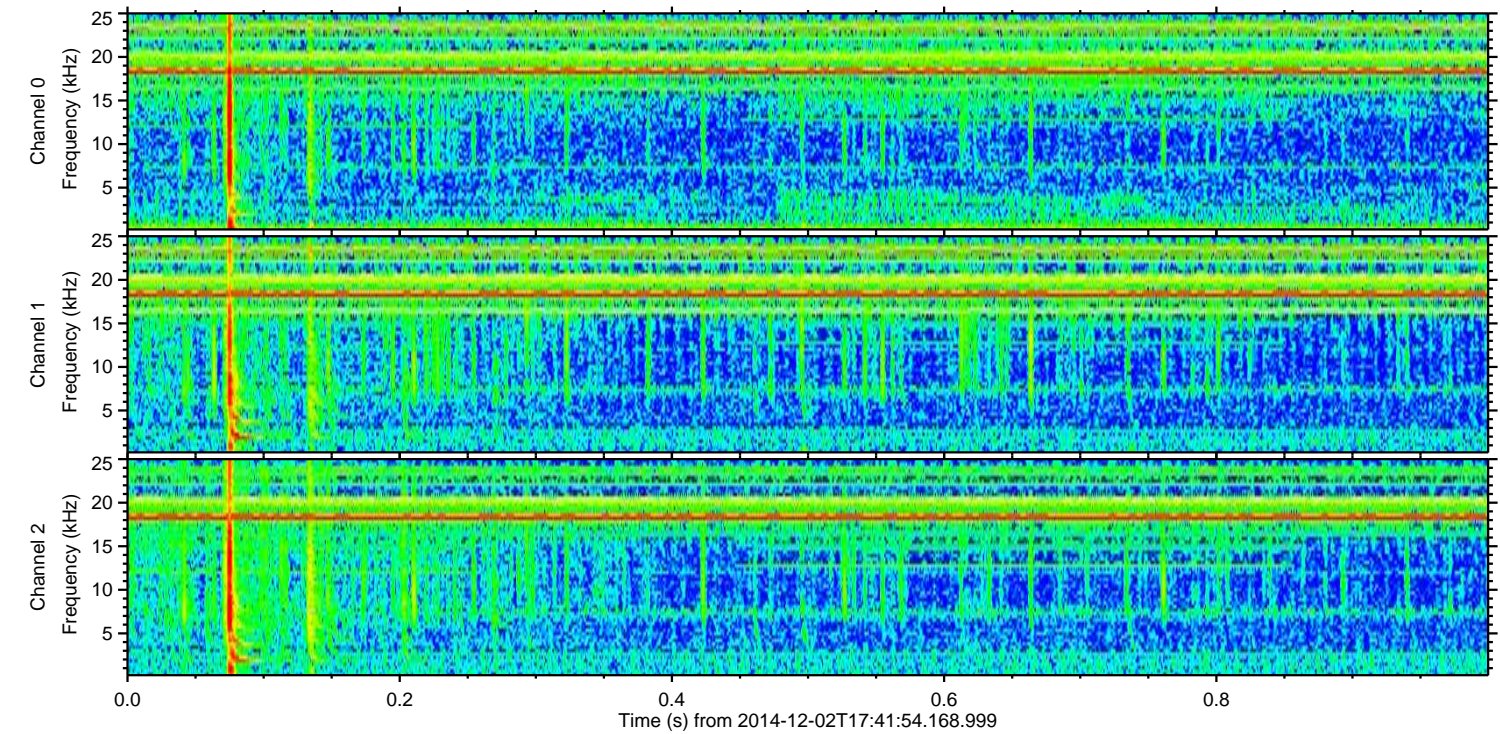
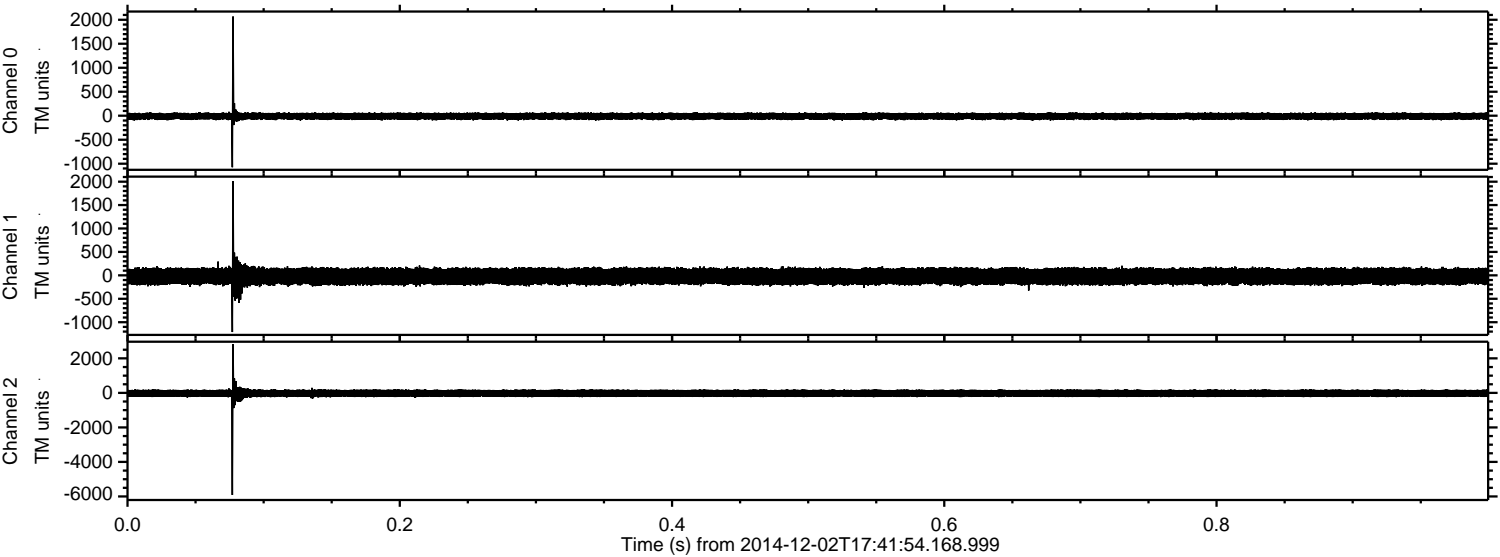
Processed Tue Dec 2 18:48:41 2014 by ELM ver.2012-10-06 from 001\_\_elm20141202\_174153\_\_dat00.bin





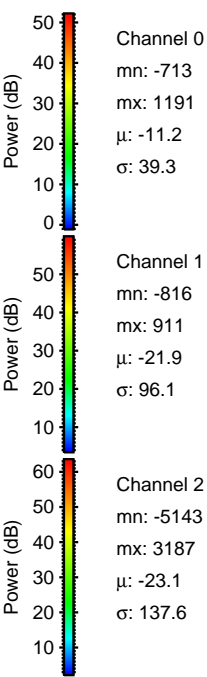
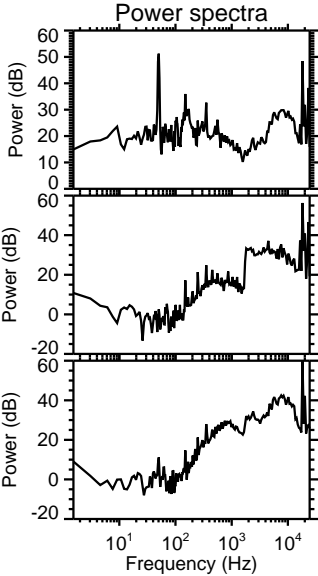
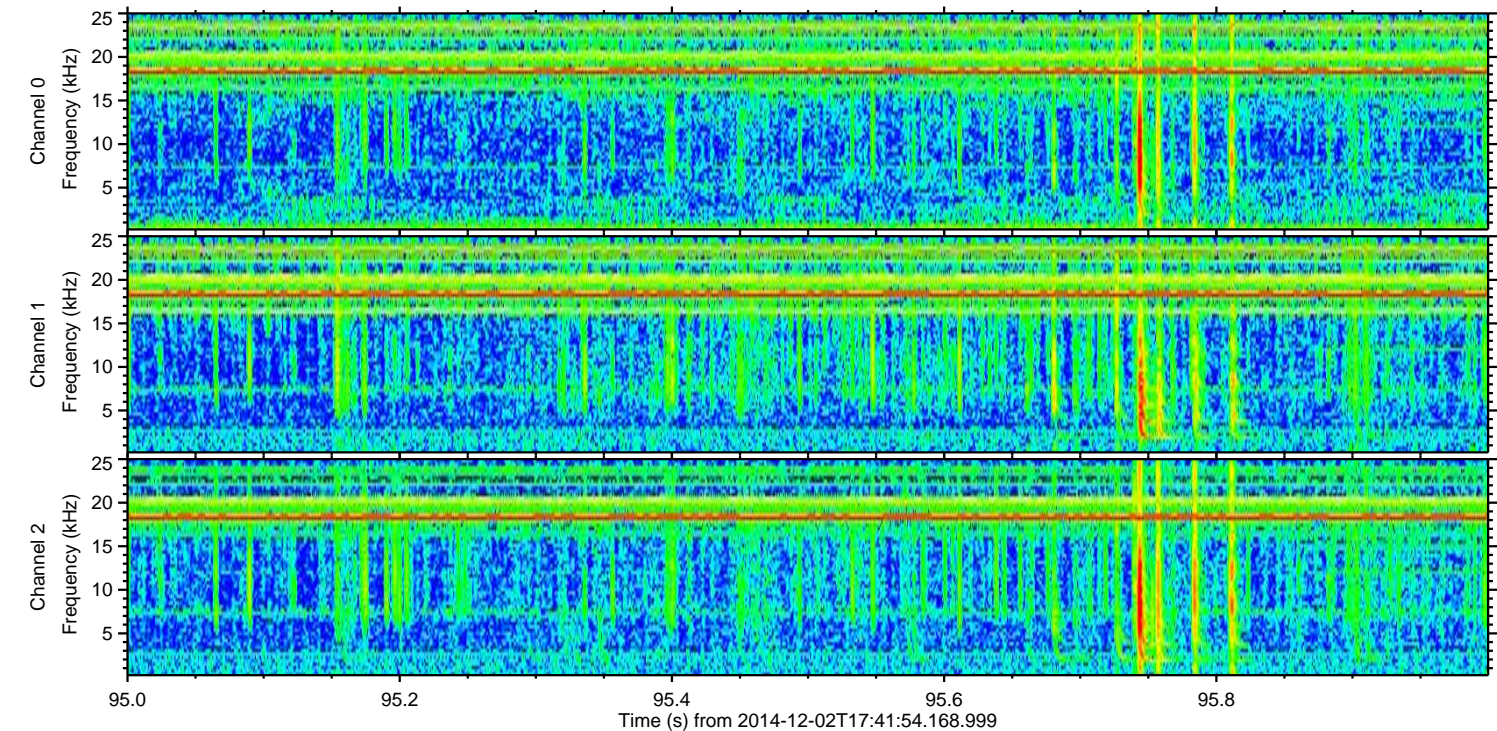
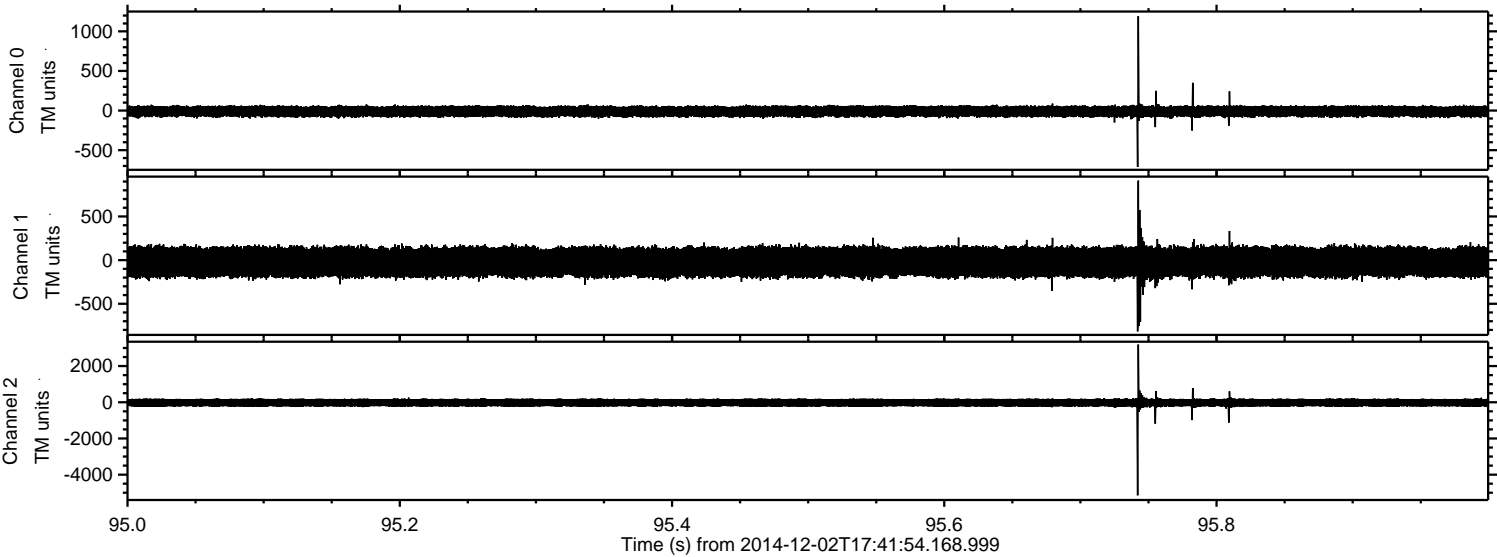
ELMAVAN 3D WAVEFORMS (Measured data sampled at 50 kHz) 49783 packets of 144 samples from 2014-12-02T17:41:54.168.999. Part 1/144

Processed Tue Dec 2 18:48:42 2014 by ELM ver.2012-10-06 from 001\_\_elm20141202\_174153\_\_dat00.bin





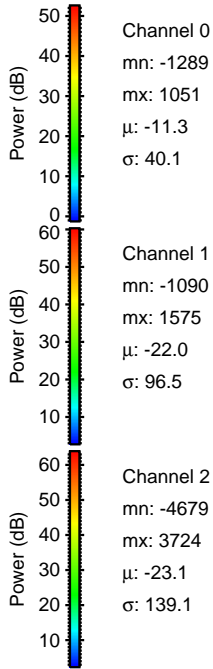
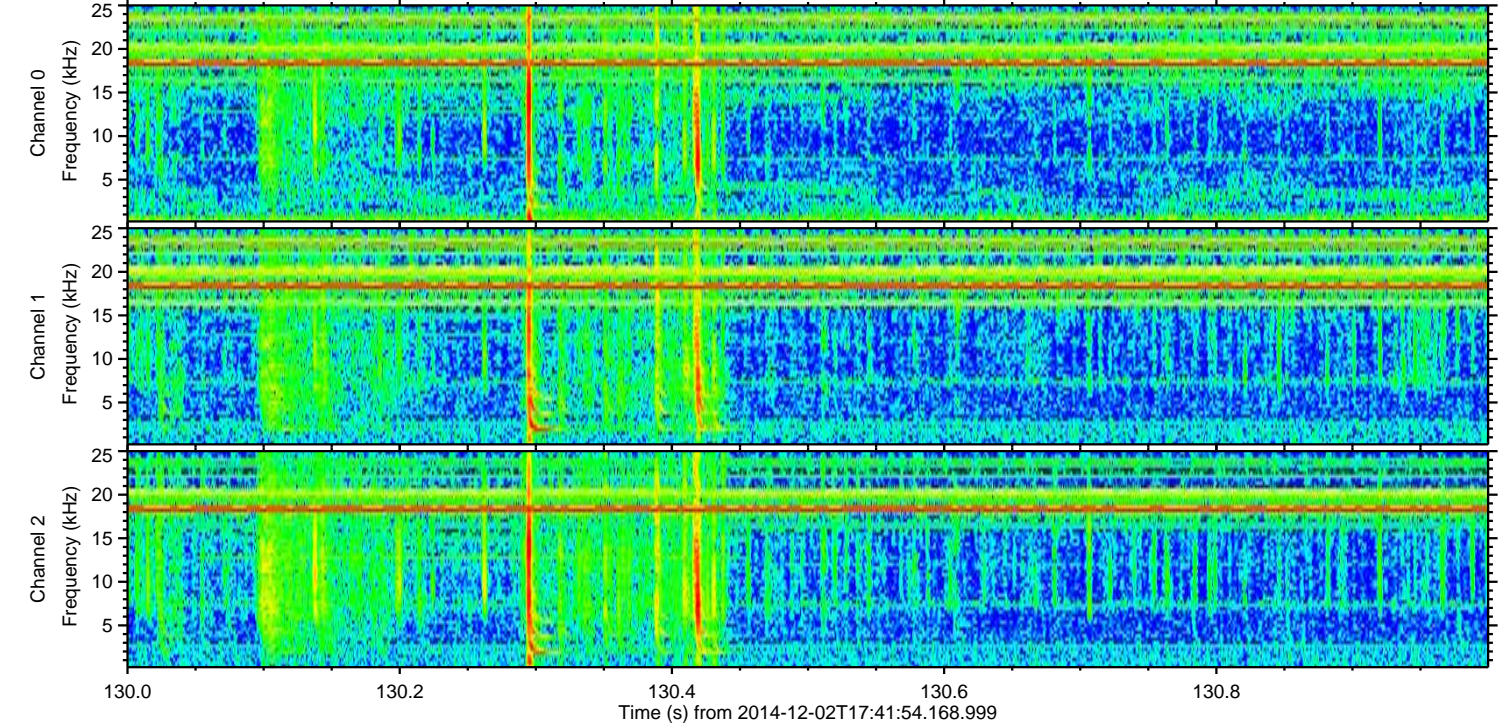
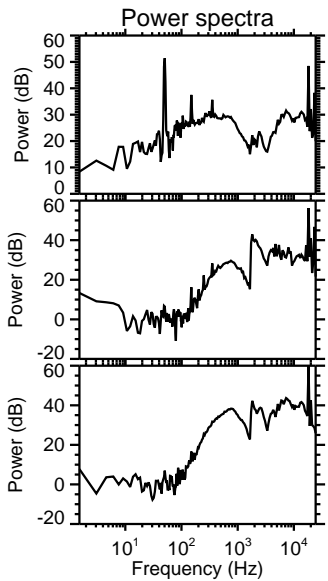
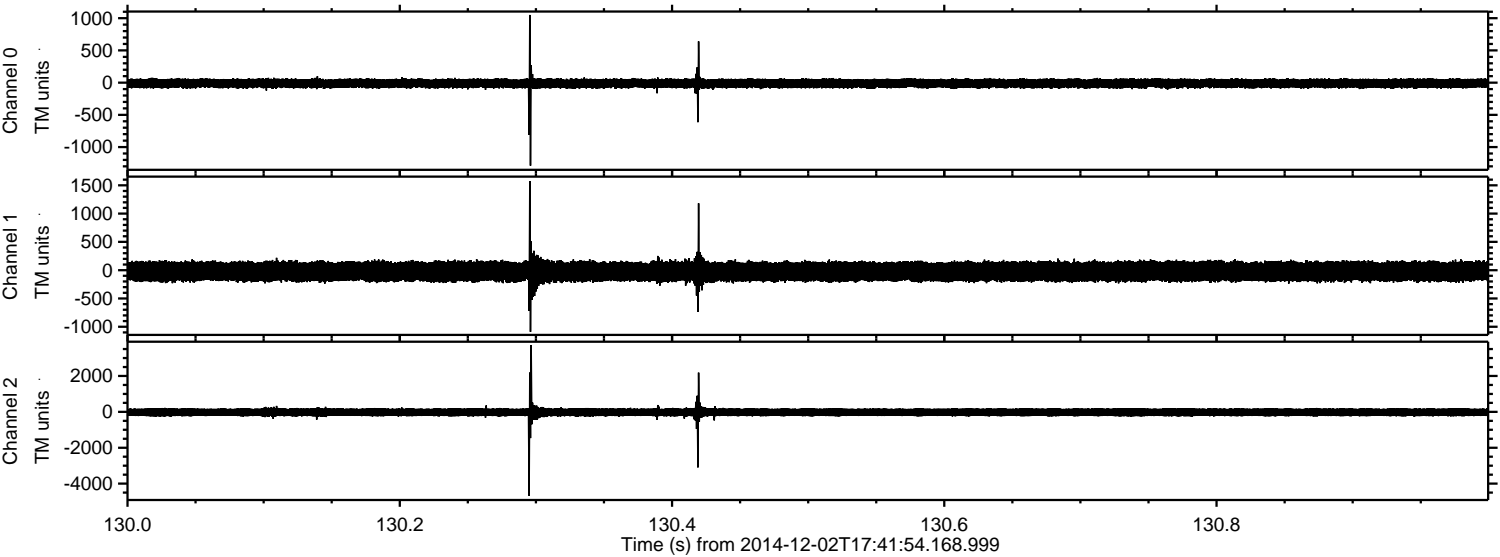
Processed Tue Dec 2 18:48:43 2014 by ELM ver.2012-10-06 from 001\_\_elm20141202\_174153\_\_dat00.bin





ELMAVAN 3D WAVEFORMS (Measured data sampled at 50 kHz) 49783 packets of 144 samples from 2014-12-02T17:41:54.168.999. Part 131/144

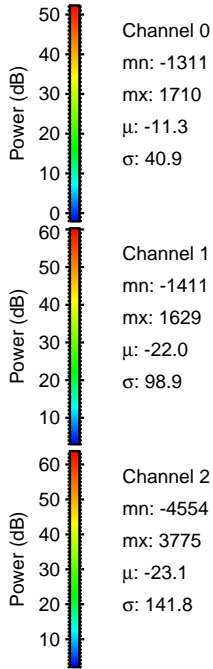
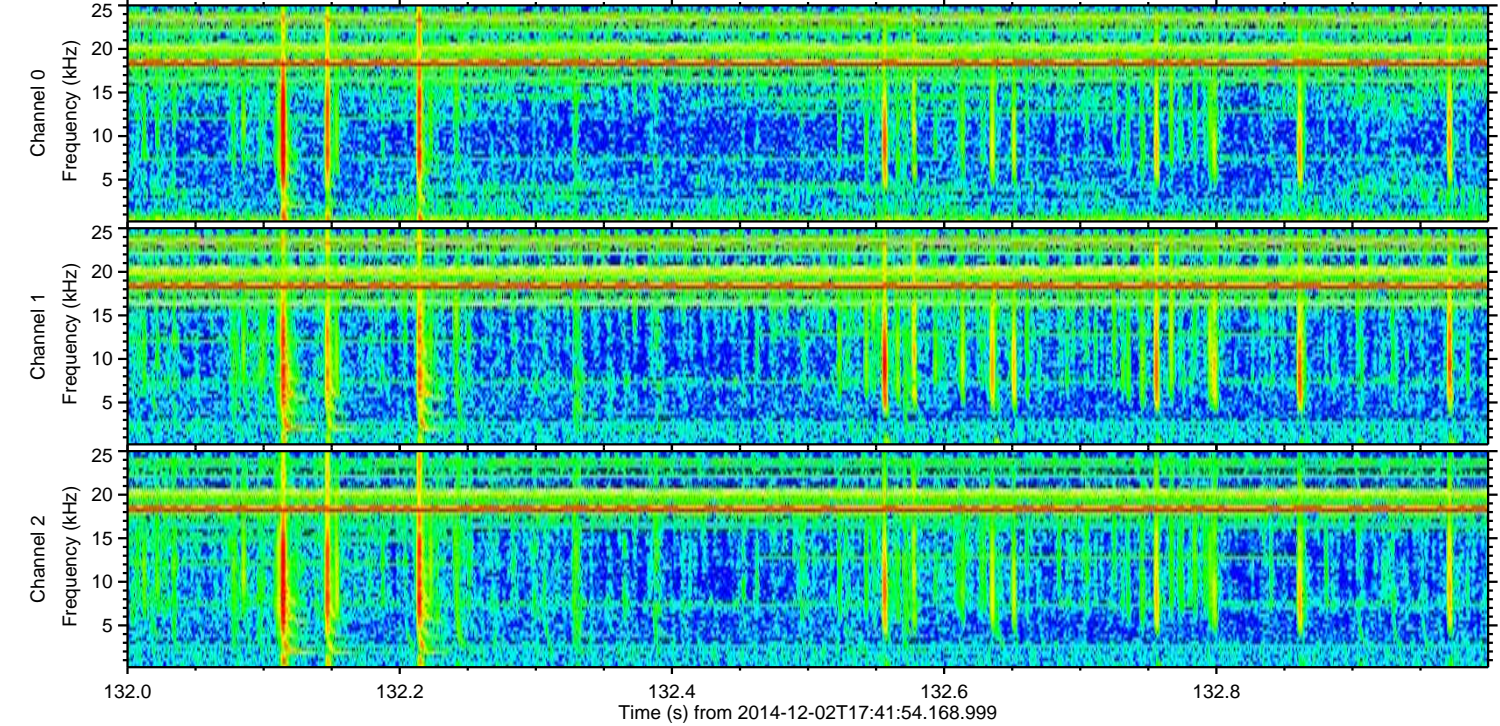
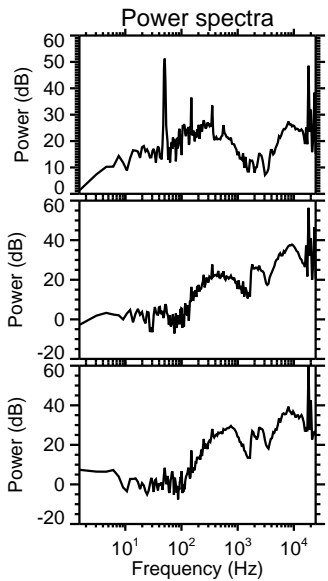
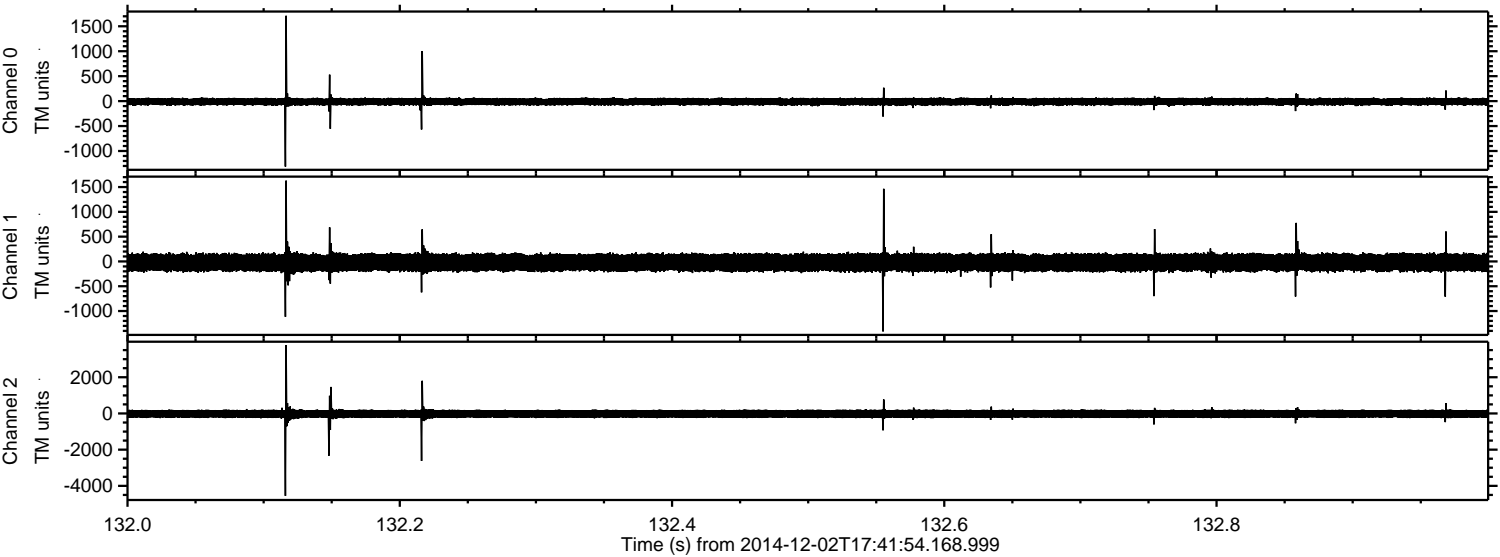
Processed Tue Dec 2 18:48:44 2014 by ELM ver.2012-10-06 from 001\_\_elm20141202\_174153\_\_dat00.bin





ELMAVAN 3D WAVEFORMS (Measured data sampled at 50 kHz) 49783 packets of 144 samples from 2014-12-02T17:41:54.168.999. Part 133/144

Processed Tue Dec 2 18:48:45 2014 by ELM ver.2012-10-06 from 001\_\_elm20141202\_174153\_\_dat00.bin



Channel 0  
mn: -1311  
mx: 1710  
 $\mu$ : -11.3  
 $\sigma$ : 40.9

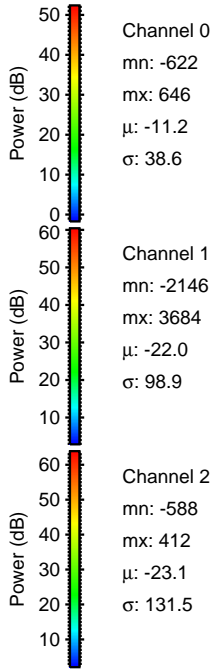
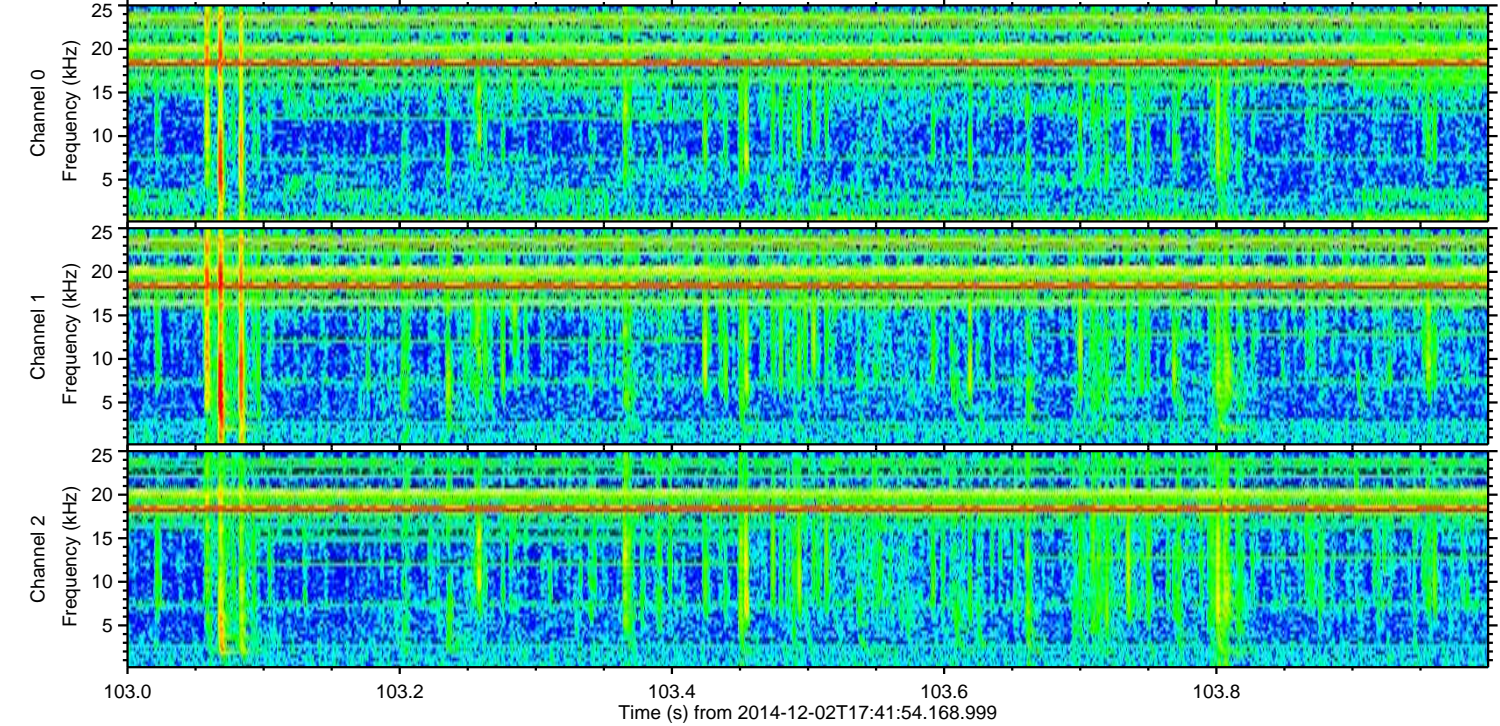
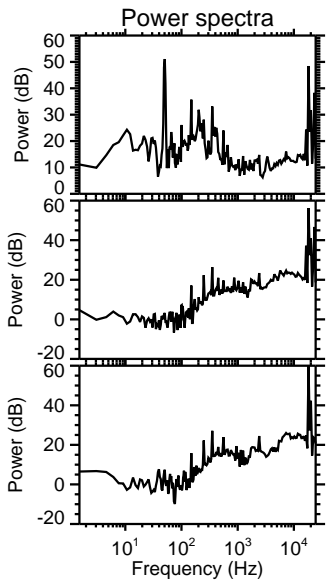
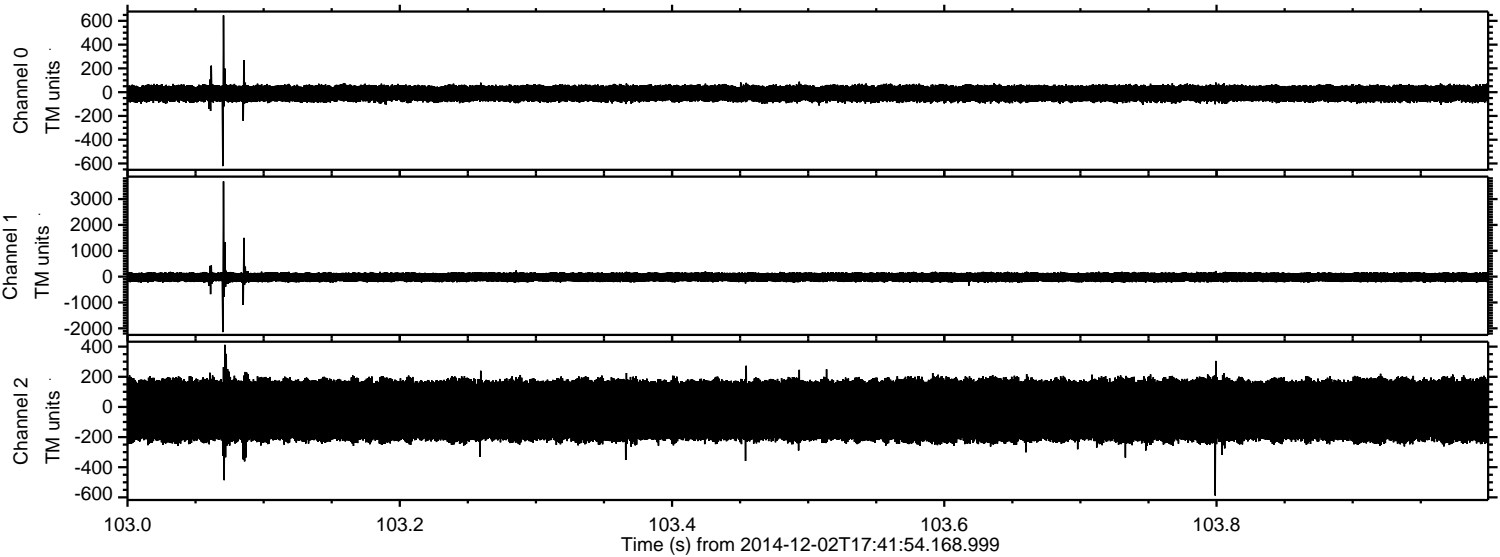
Channel 1  
mn: -1411  
mx: 1629  
 $\mu$ : -22.0  
 $\sigma$ : 98.9

Channel 2  
mn: -4554  
mx: 3775  
 $\mu$ : -23.1  
 $\sigma$ : 141.8



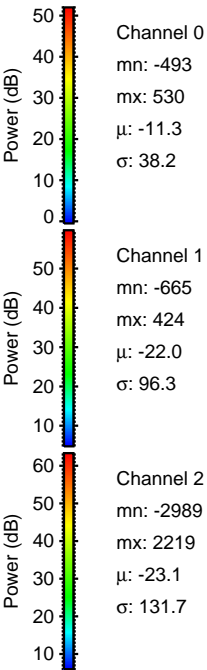
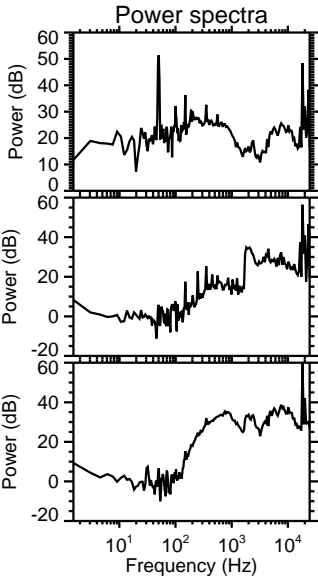
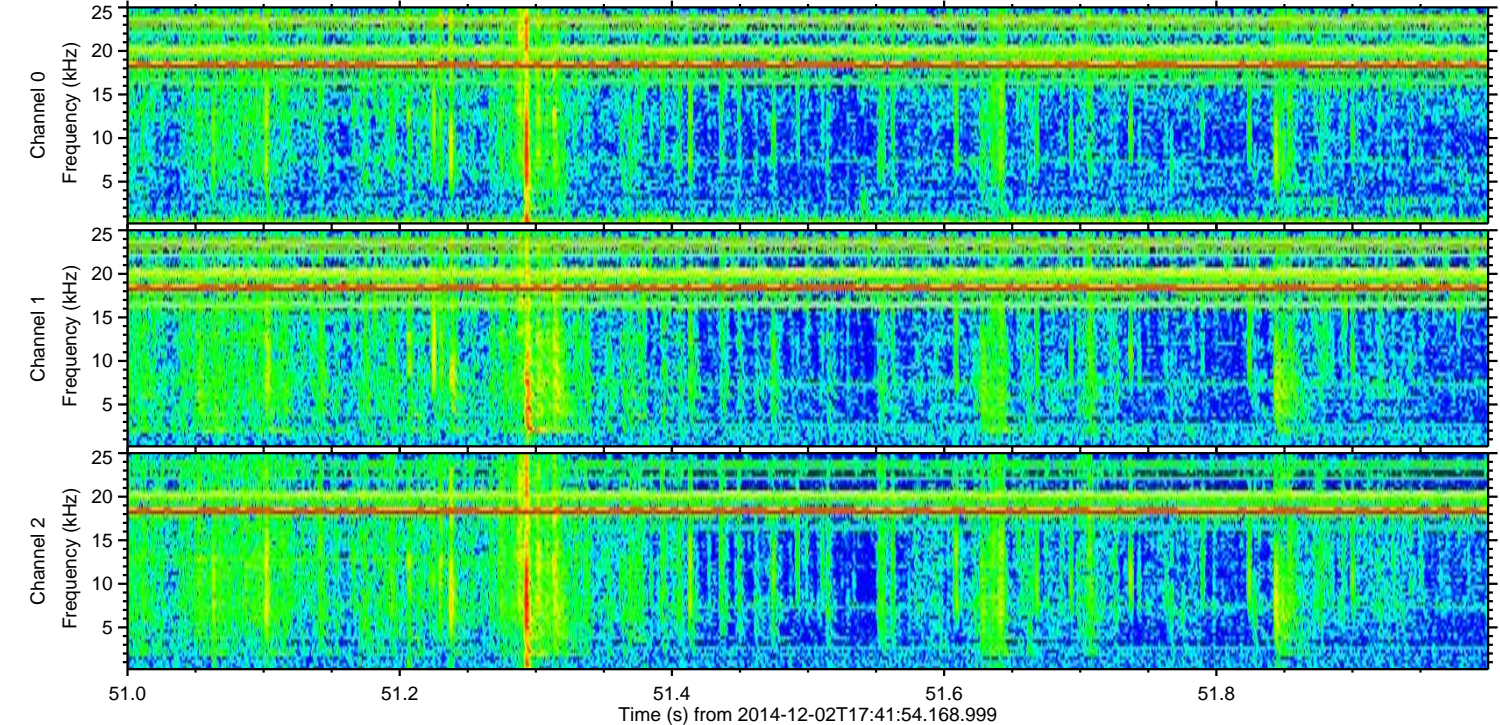
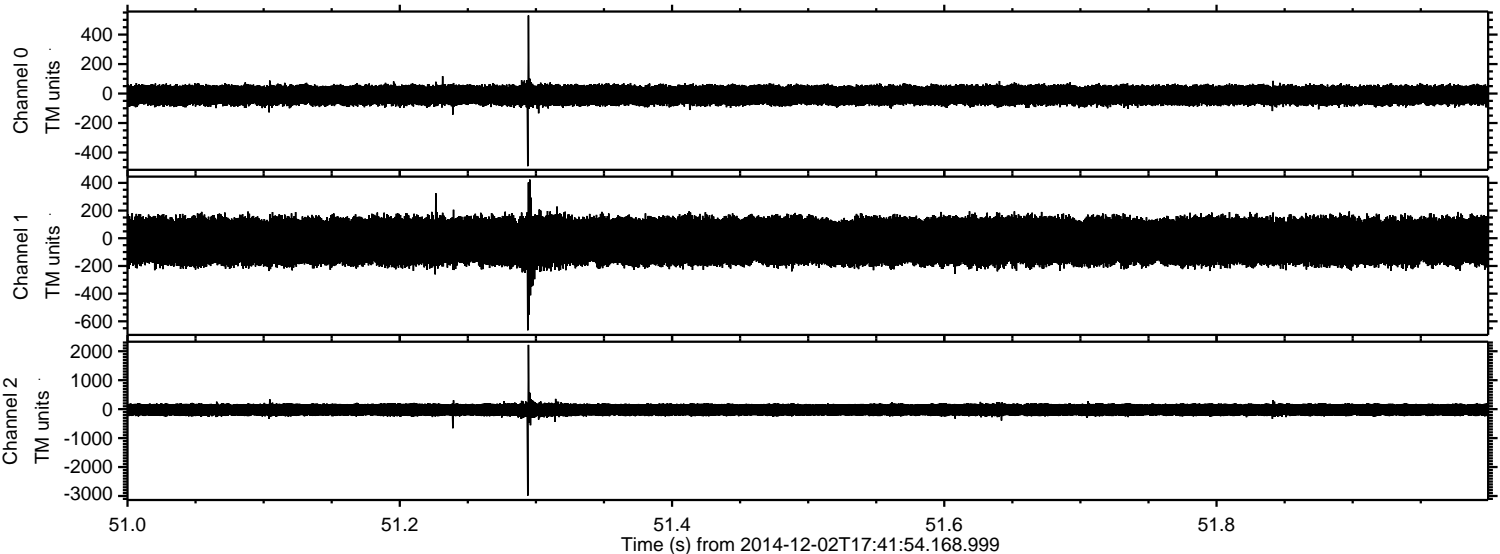
ELMAVAN 3D WAVEFORMS (Measured data sampled at 50 kHz) 49783 packets of 144 samples from 2014-12-02T17:41:54.168.999. Part 104/144

Processed Tue Dec 2 18:48:46 2014 by ELM ver.2012-10-06 from 001\_\_elm20141202\_174153\_\_dat00.bin





Processed Tue Dec 2 18:48:47 2014 by ELM ver.2012-10-06 from 001\_\_elm20141202\_174153\_\_dat00.bin





Processed Tue Dec 2 18:48:48 2014 by ELM ver.2012-10-06 from 001\_\_elm20141202\_174153\_\_dat00.bin

