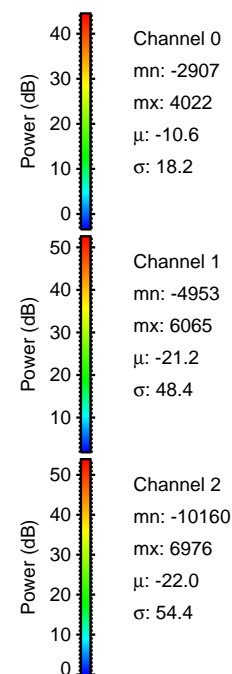
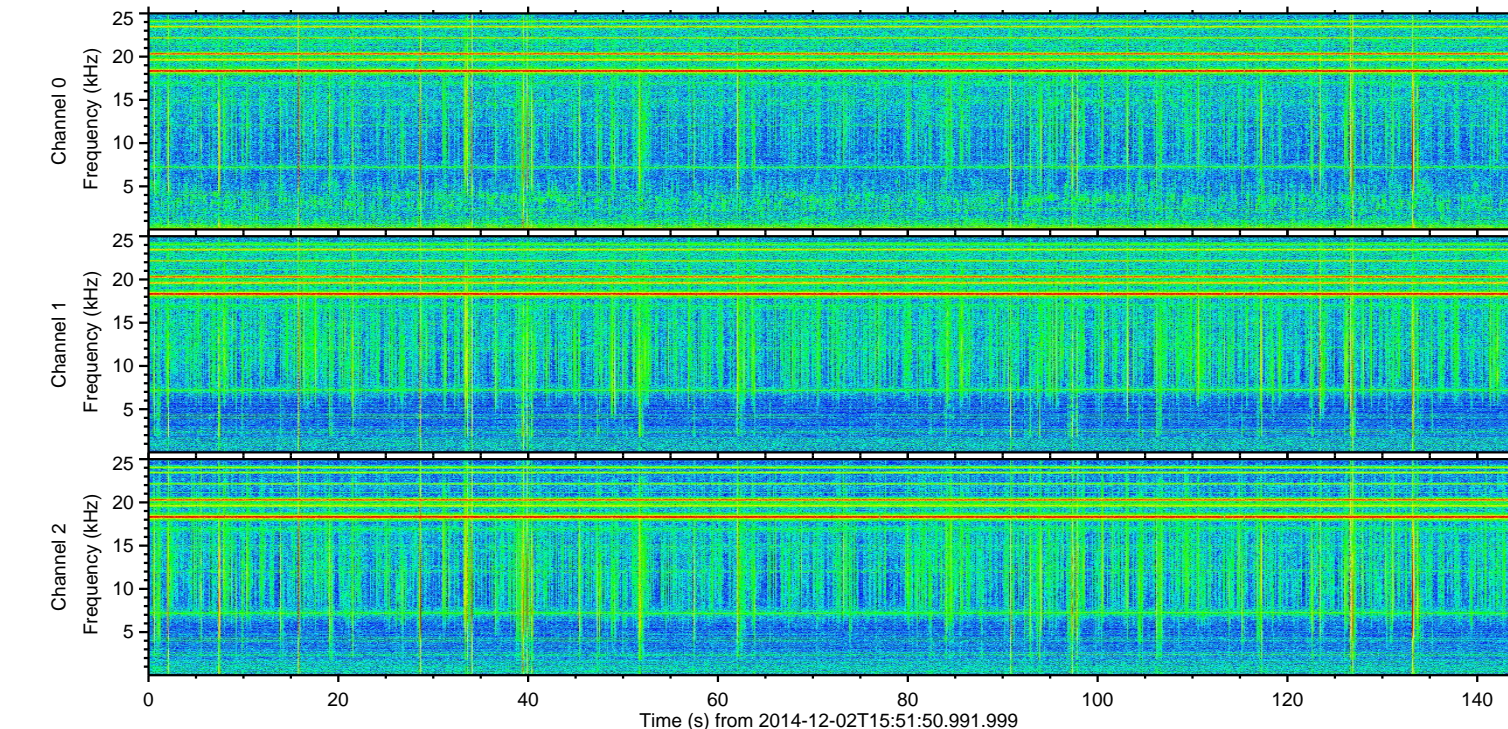
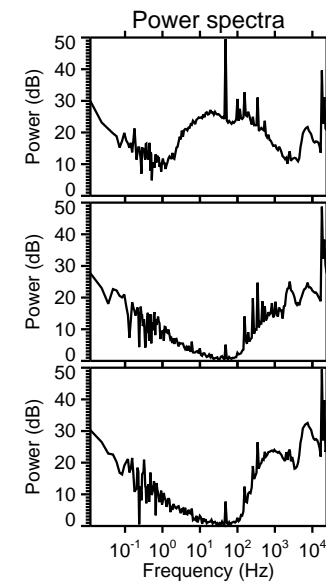
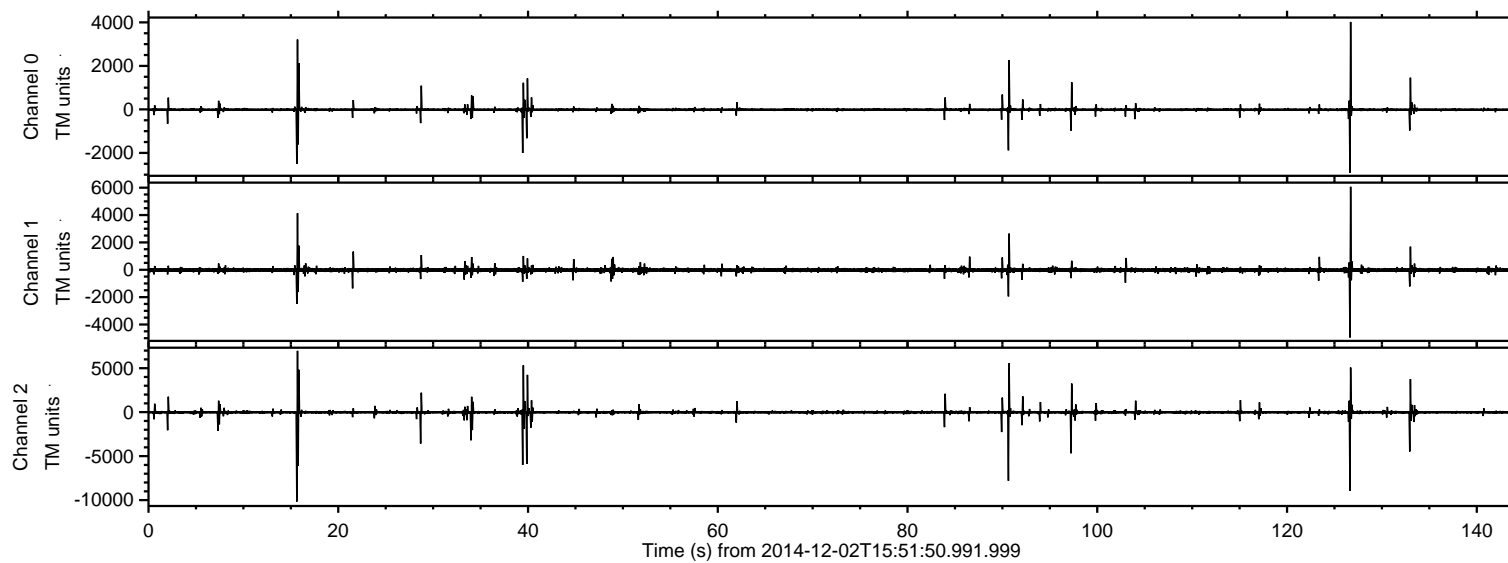


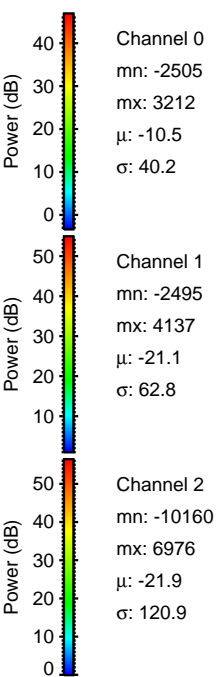
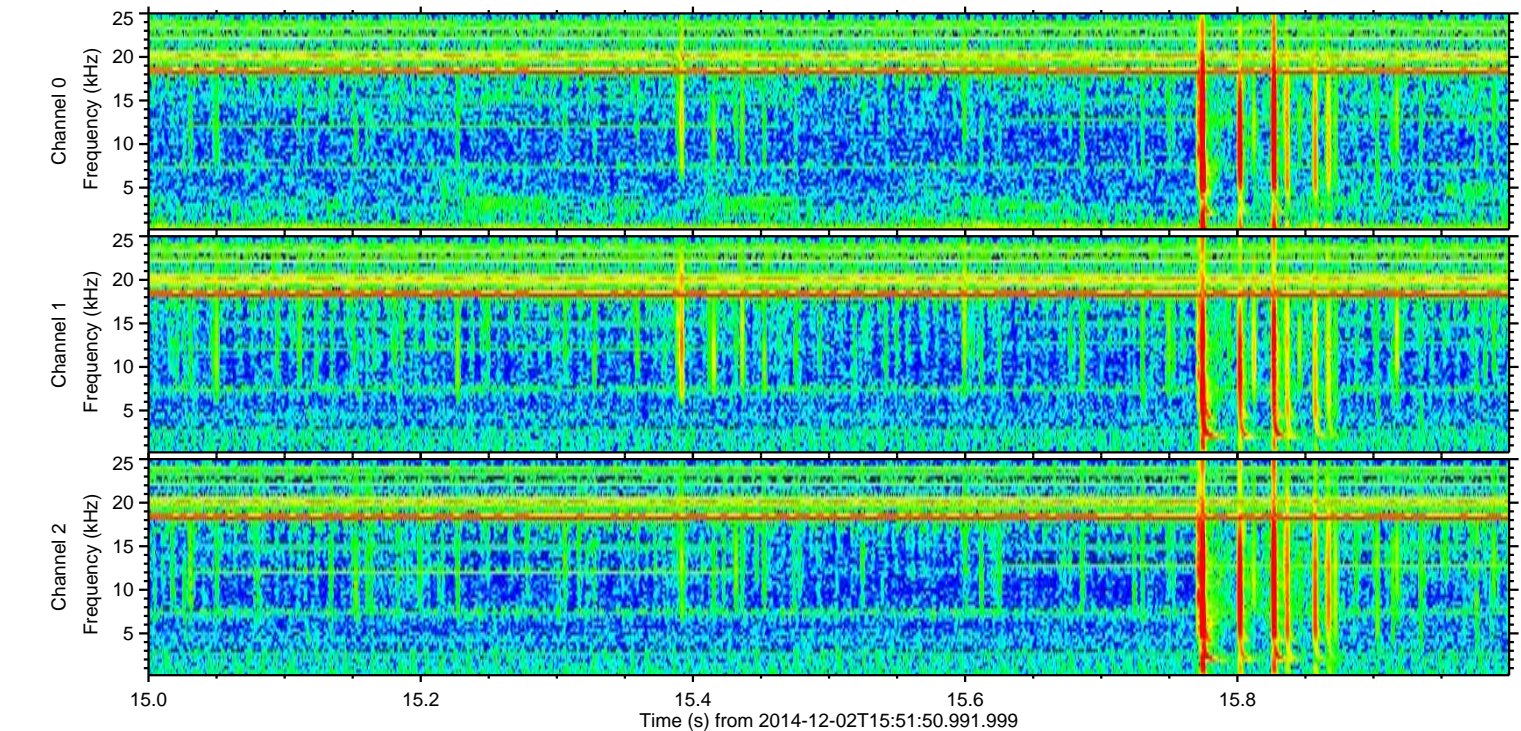
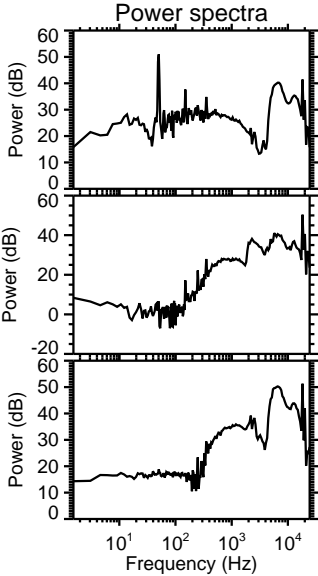
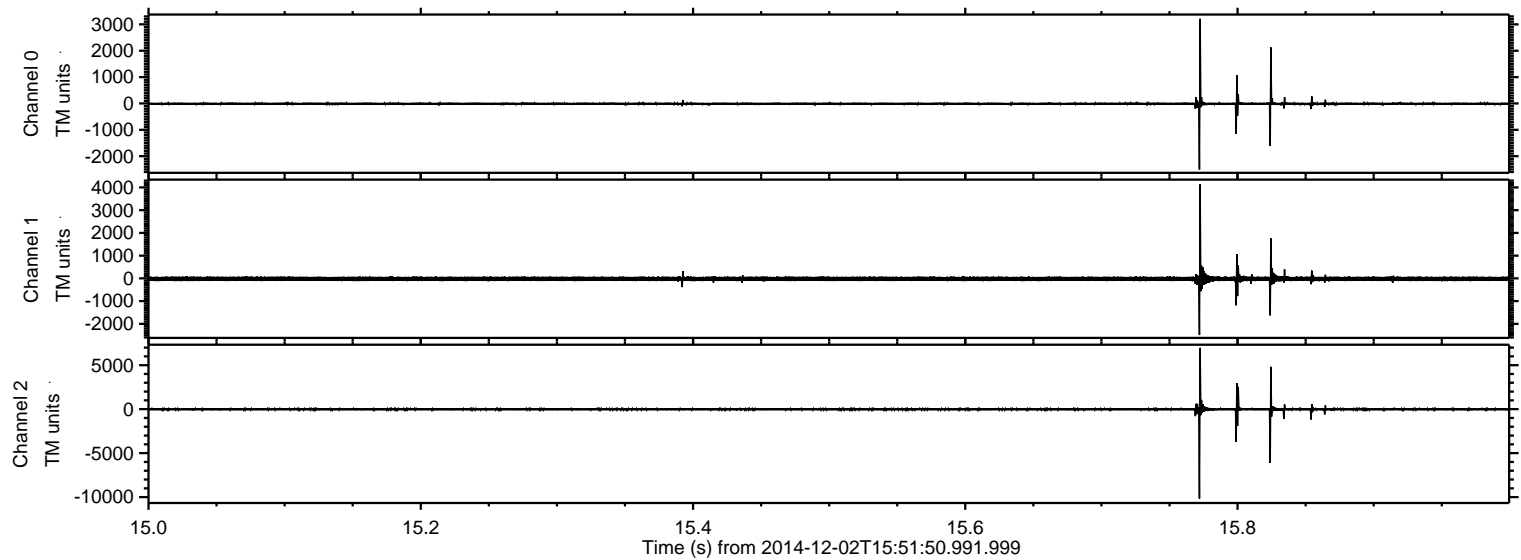
ELMAVAN 3D WAVEFORMS (Measured data sampled at 50 kHz) 49795 packets of 144 samples from 2014-12-02T15:51:50.991.999.

Processed Tue Dec 2 16:58:45 2014 by ELM ver.2012-10-06 from 001__elm20141202_155149__dat00.bin



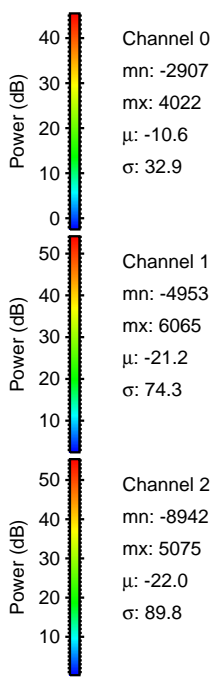
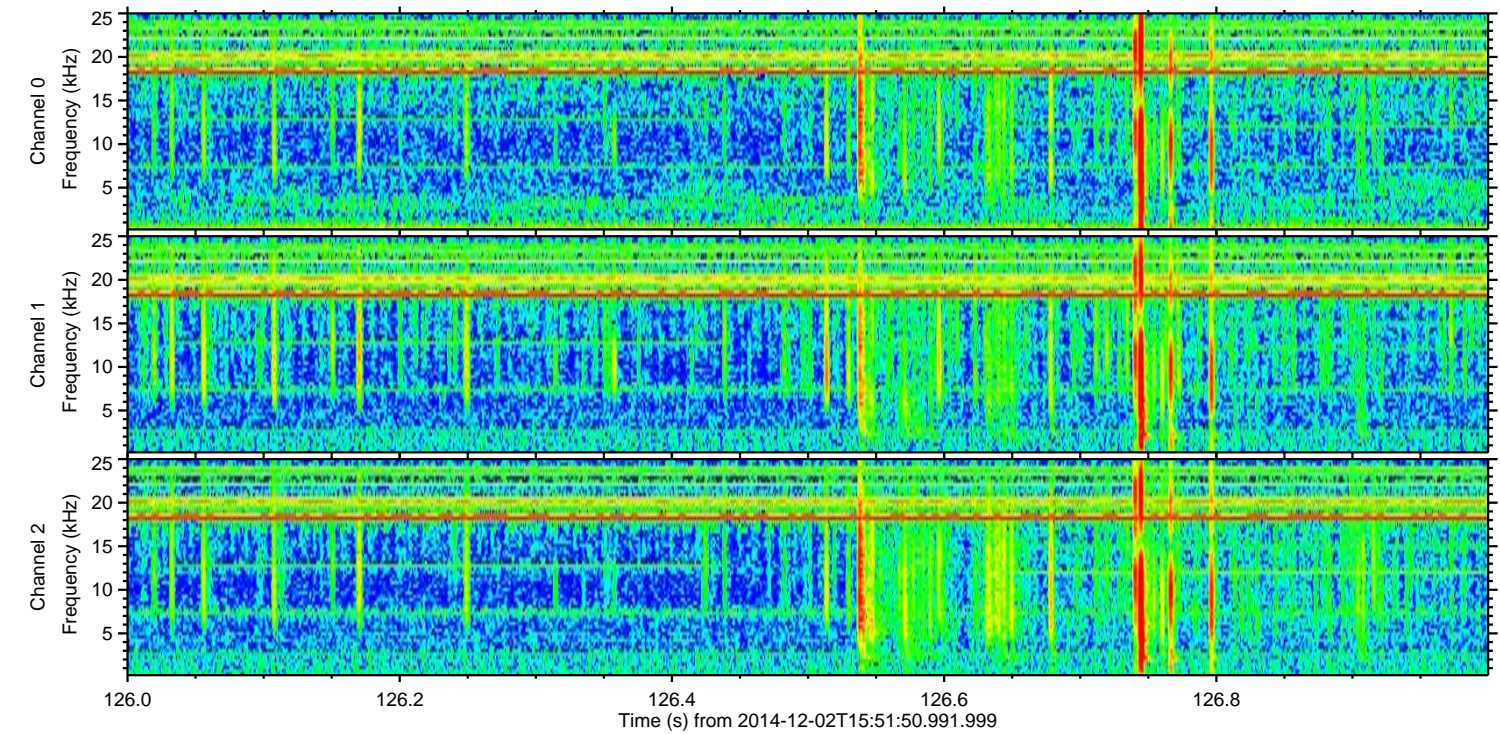
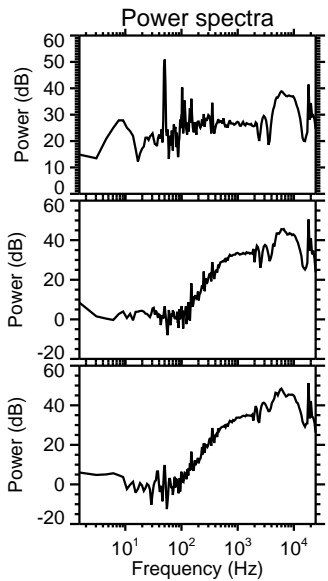
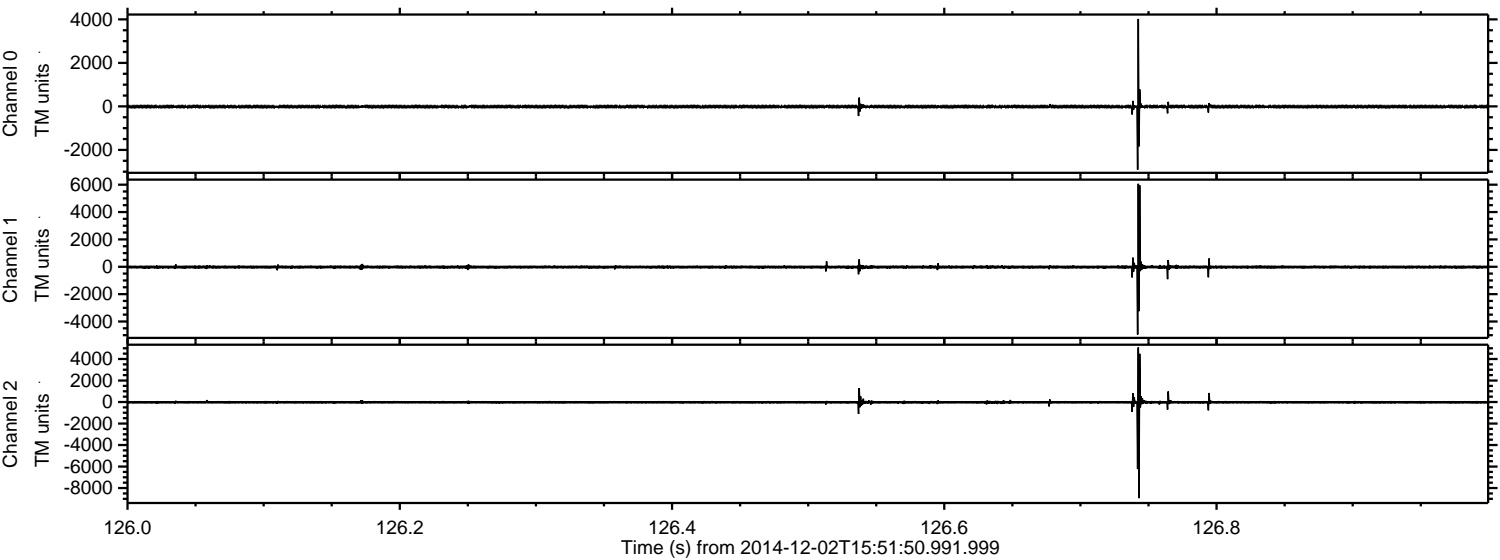
ELMAVAN 3D WAVEFORMS (Measured data sampled at 50 kHz) 49795 packets of 144 samples from 2014-12-02T15:51:50.991.999. Part 16/144

Processed Tue Dec 2 16:58:56 2014 by ELM ver.2012-10-06 from 001__elm20141202_155149__dat00.bin



ELMAVAN 3D WAVEFORMS (Measured data sampled at 50 kHz) 49795 packets of 144 samples from 2014-12-02T15:51:50.991.999. Part 127/144

Processed Tue Dec 2 16:58:57 2014 by ELM ver.2012-10-06 from 001__elm20141202_155149__dat00.bin

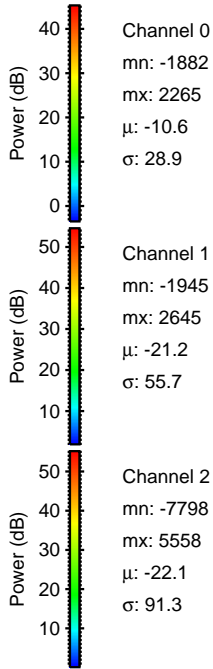
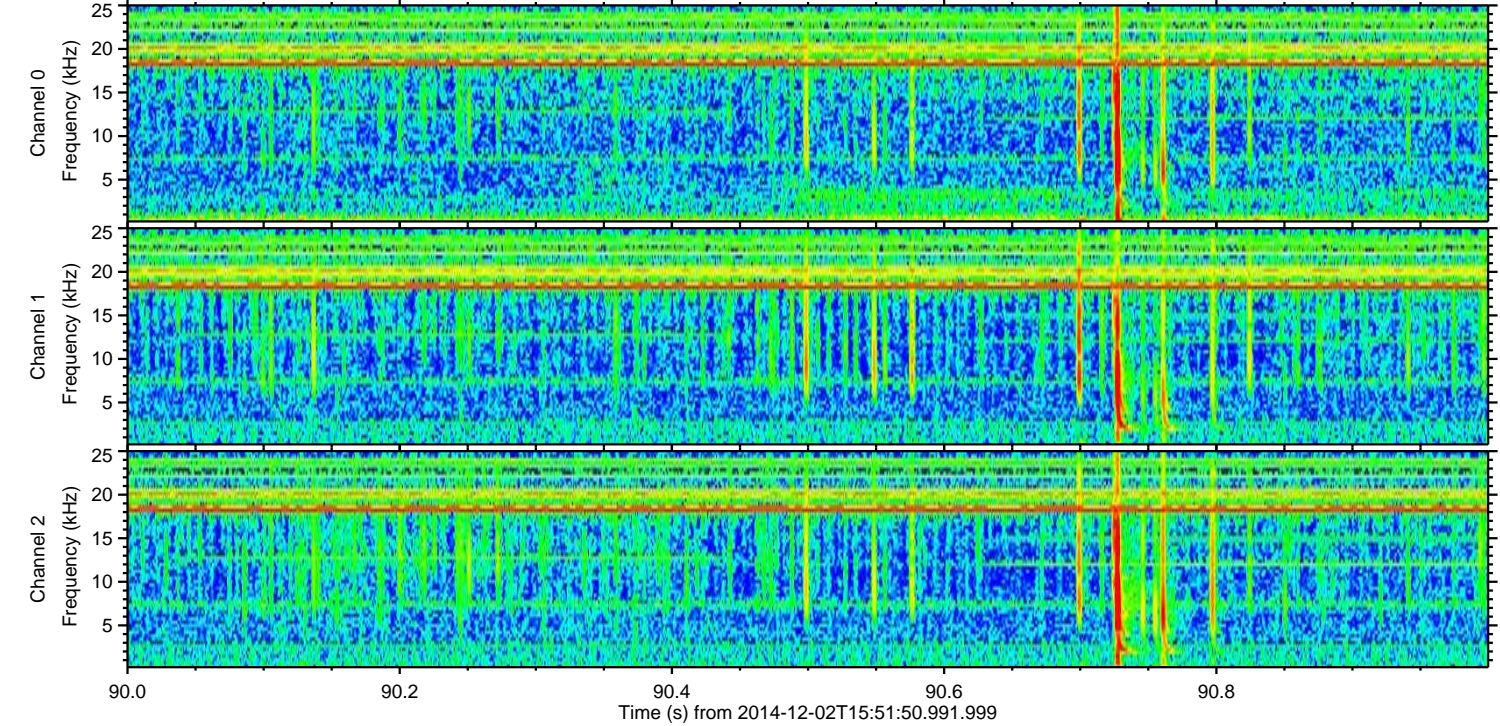
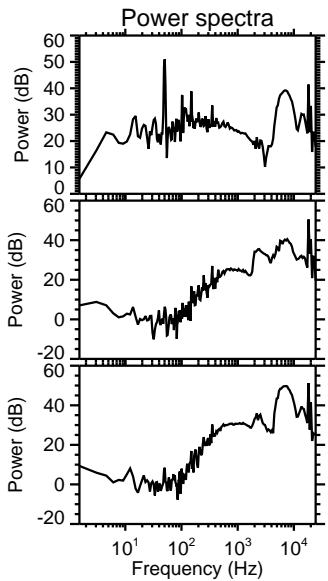
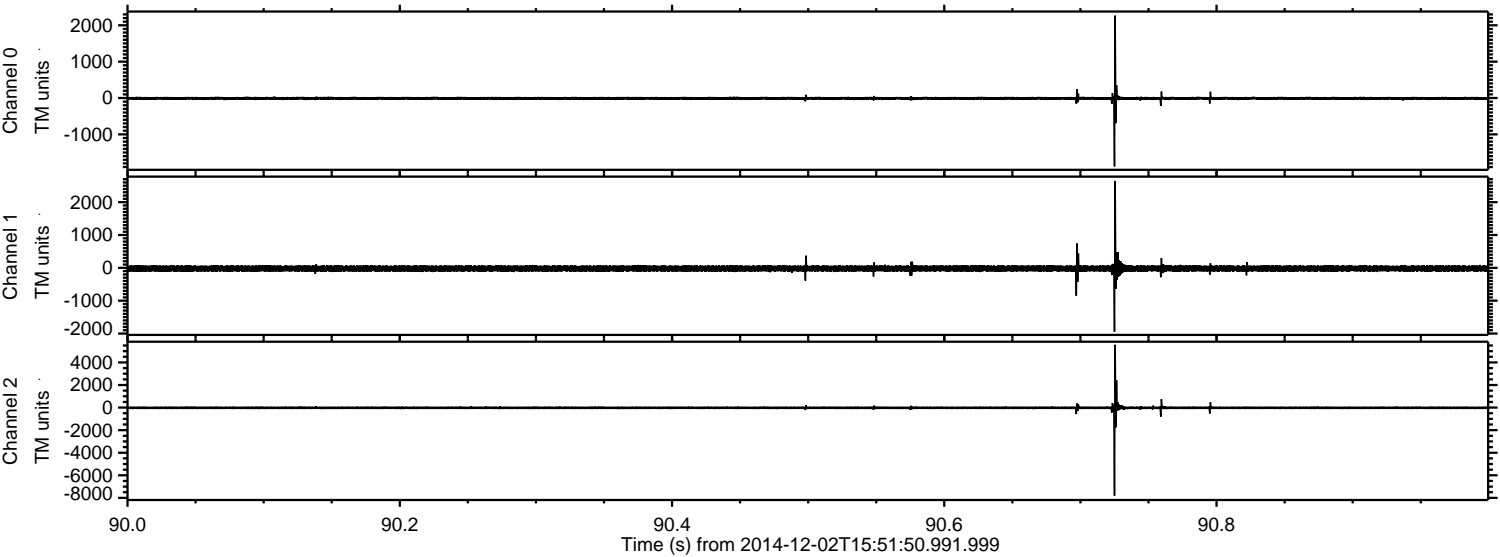


Channel 0
mn: -2907
mx: 4022
 μ : -10.6
 σ : 32.9

Channel 1
mn: -4953
mx: 6065
 μ : -21.2
 σ : 74.3

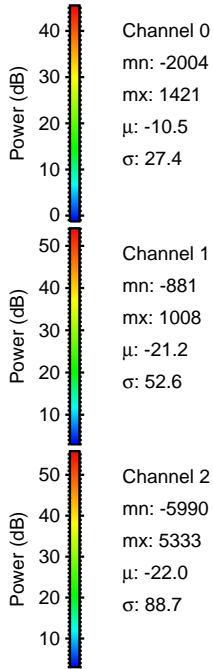
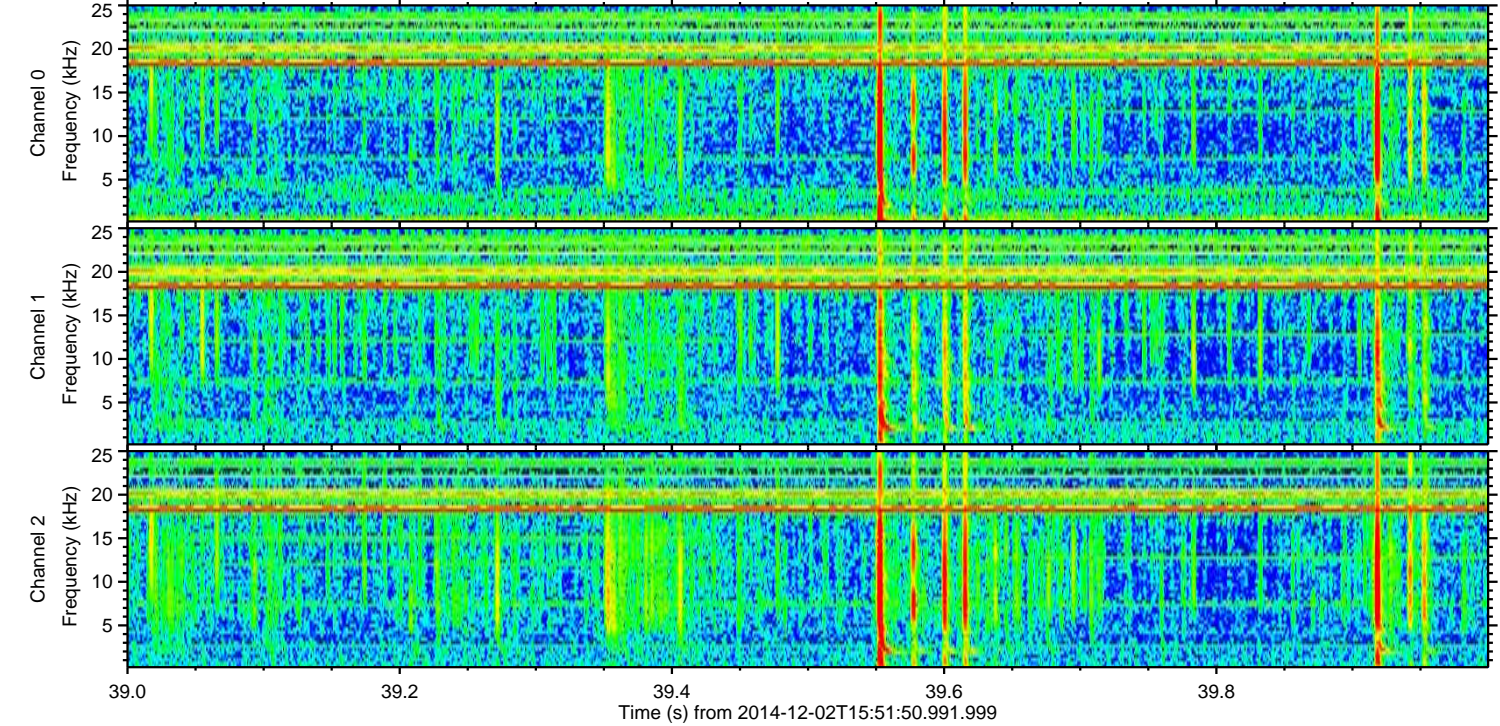
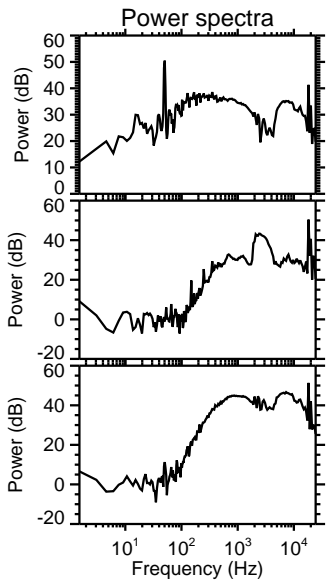
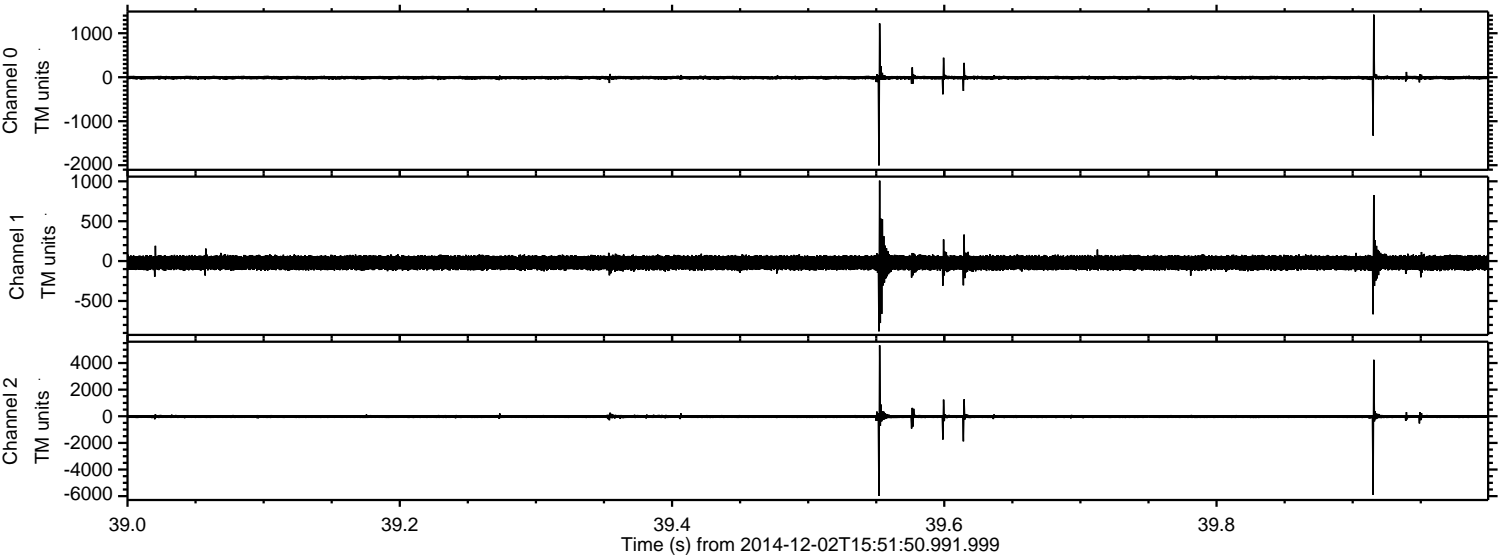
Channel 2
mn: -8942
mx: 5075
 μ : -22.0
 σ : 89.8

Processed Tue Dec 2 16:58:58 2014 by ELM ver.2012-10-06 from 001__elm20141202_155149__dat00.bin



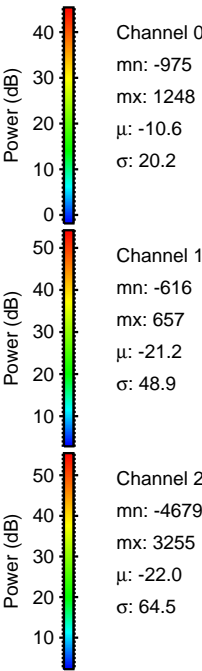
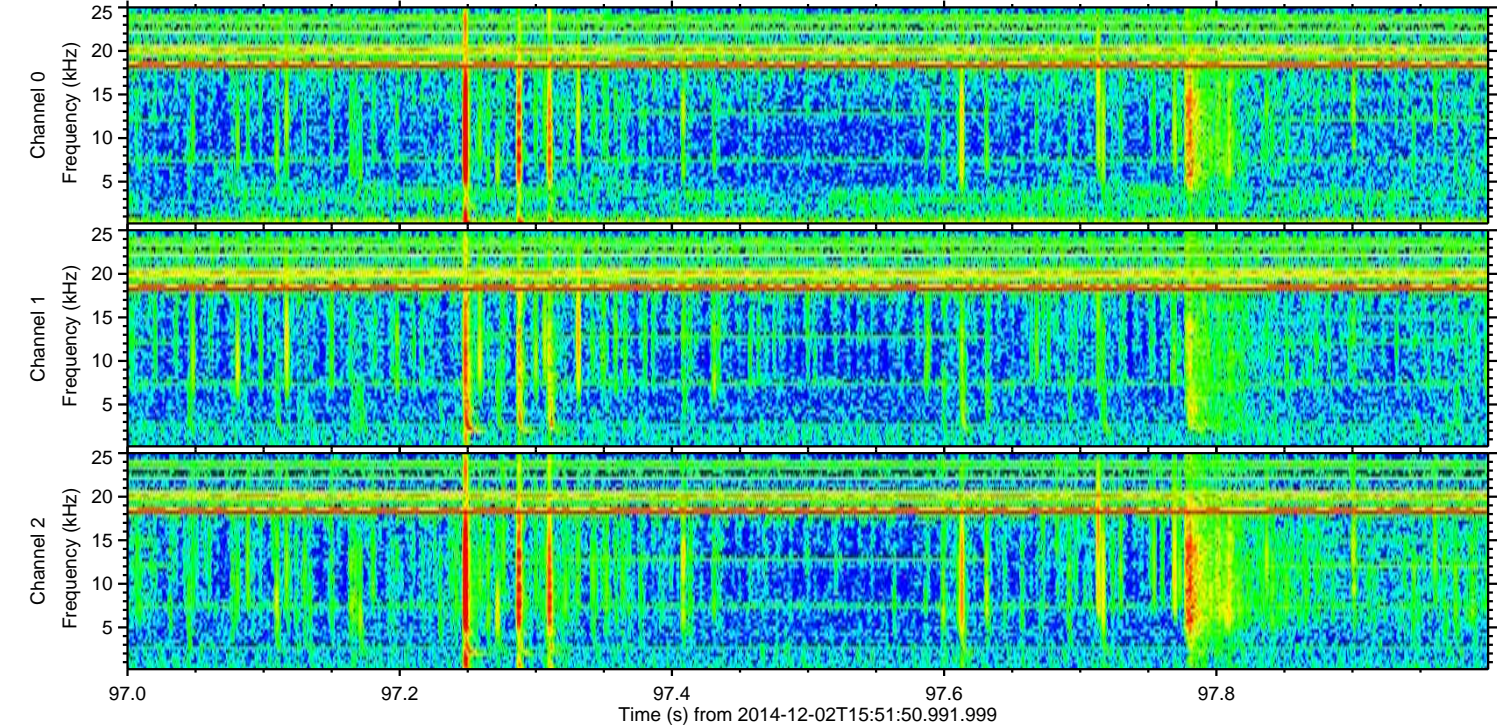
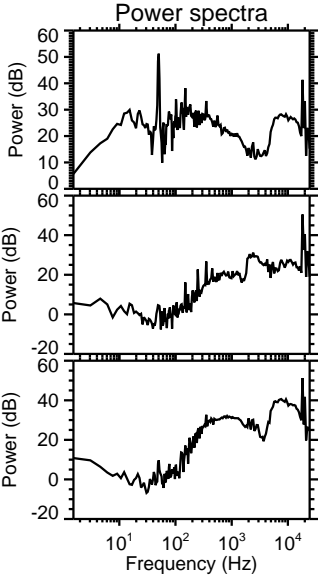
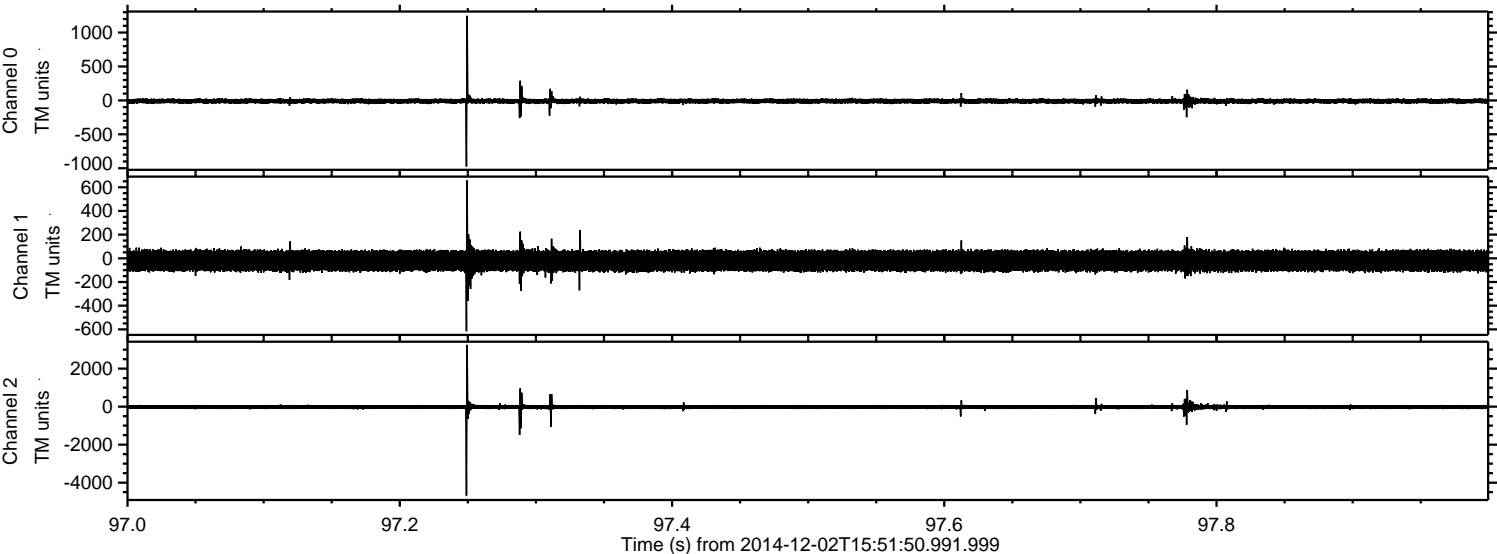
ELMAVAN 3D WAVEFORMS (Measured data sampled at 50 kHz) 49795 packets of 144 samples from 2014-12-02T15:51:50.991.999. Part 40/144

Processed Tue Dec 2 16:58:59 2014 by ELM ver.2012-10-06 from 001__elm20141202_155149__dat00.bin



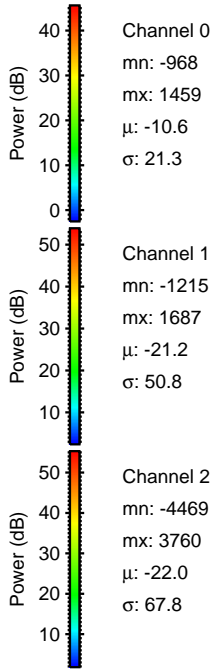
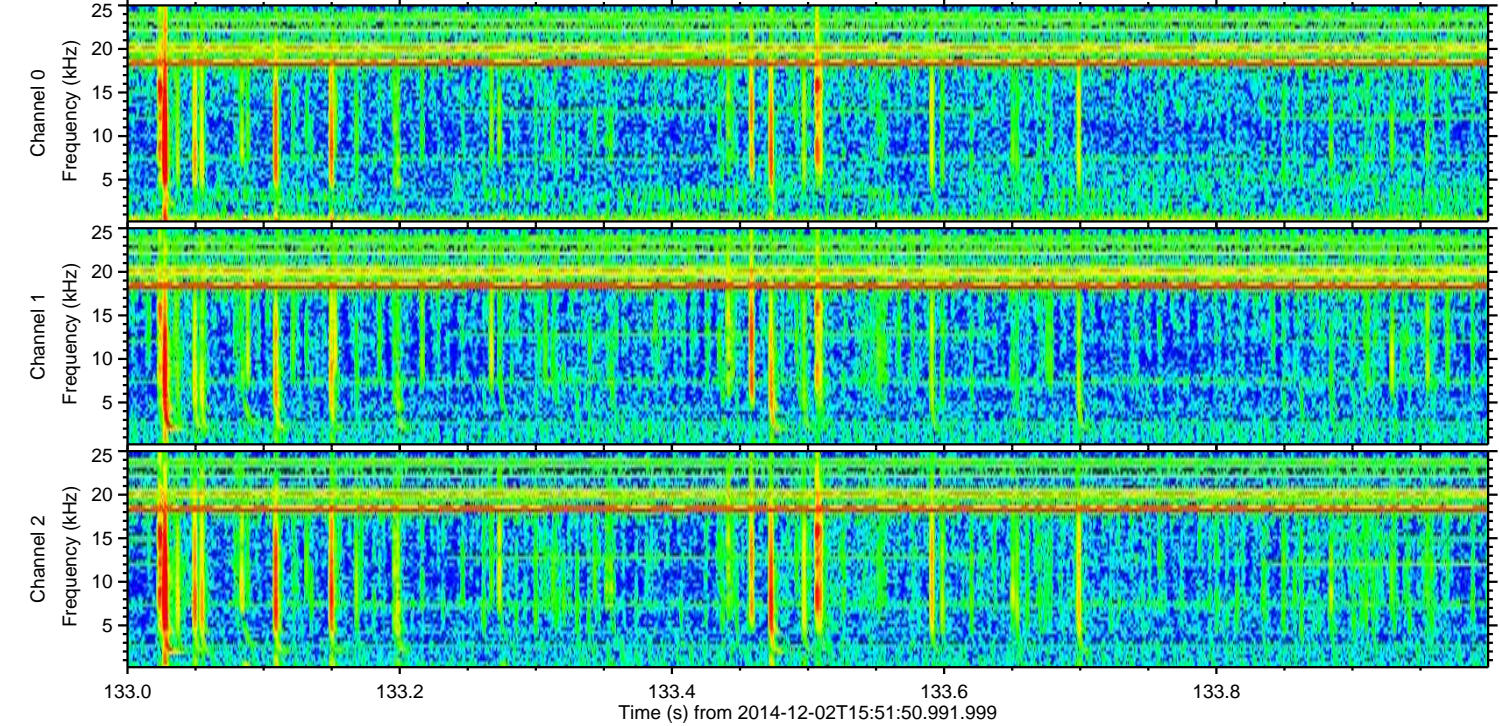
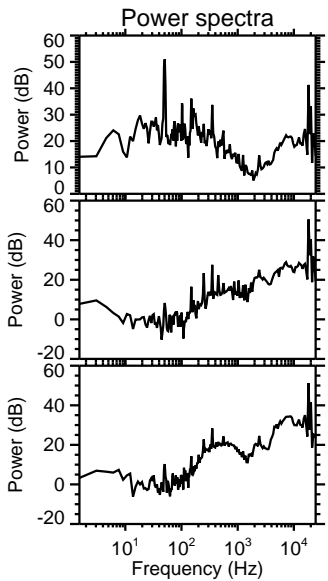
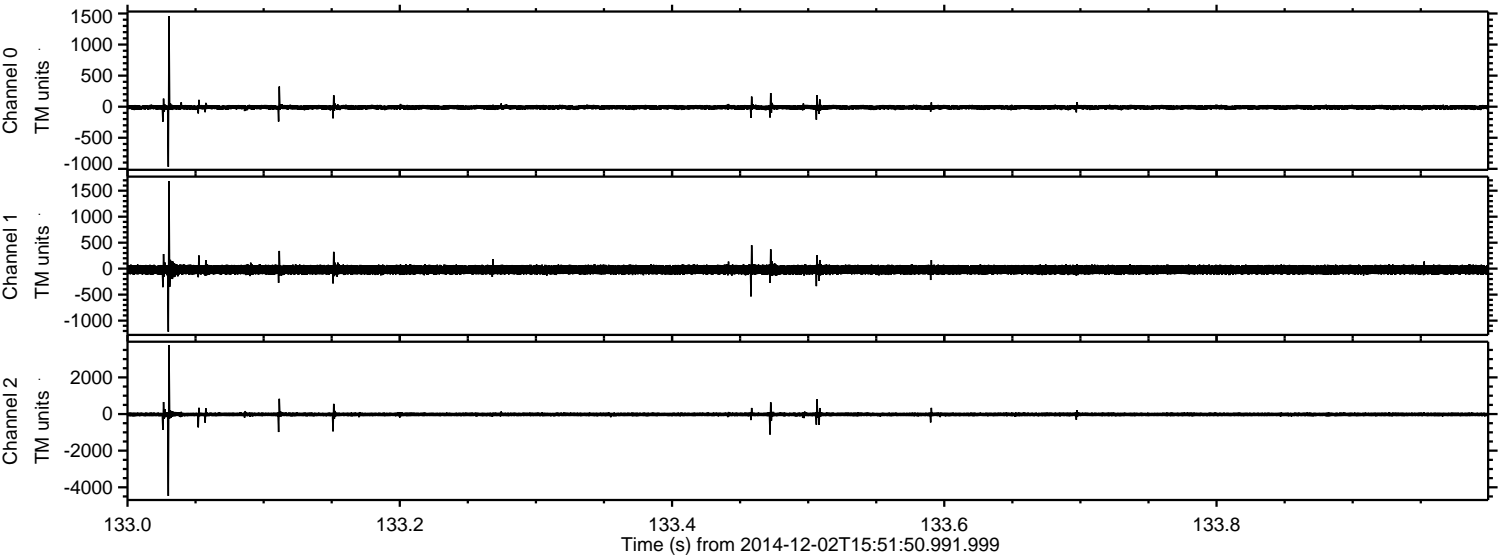
ELMAVAN 3D WAVEFORMS (Measured data sampled at 50 kHz) 49795 packets of 144 samples from 2014-12-02T15:51:50.991.999. Part 98/144

Processed Tue Dec 2 16:59:00 2014 by ELM ver.2012-10-06 from 001__elm20141202_155149__dat00.bin

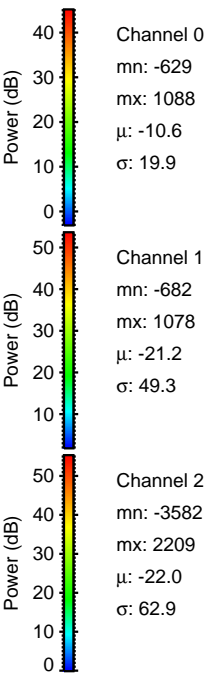
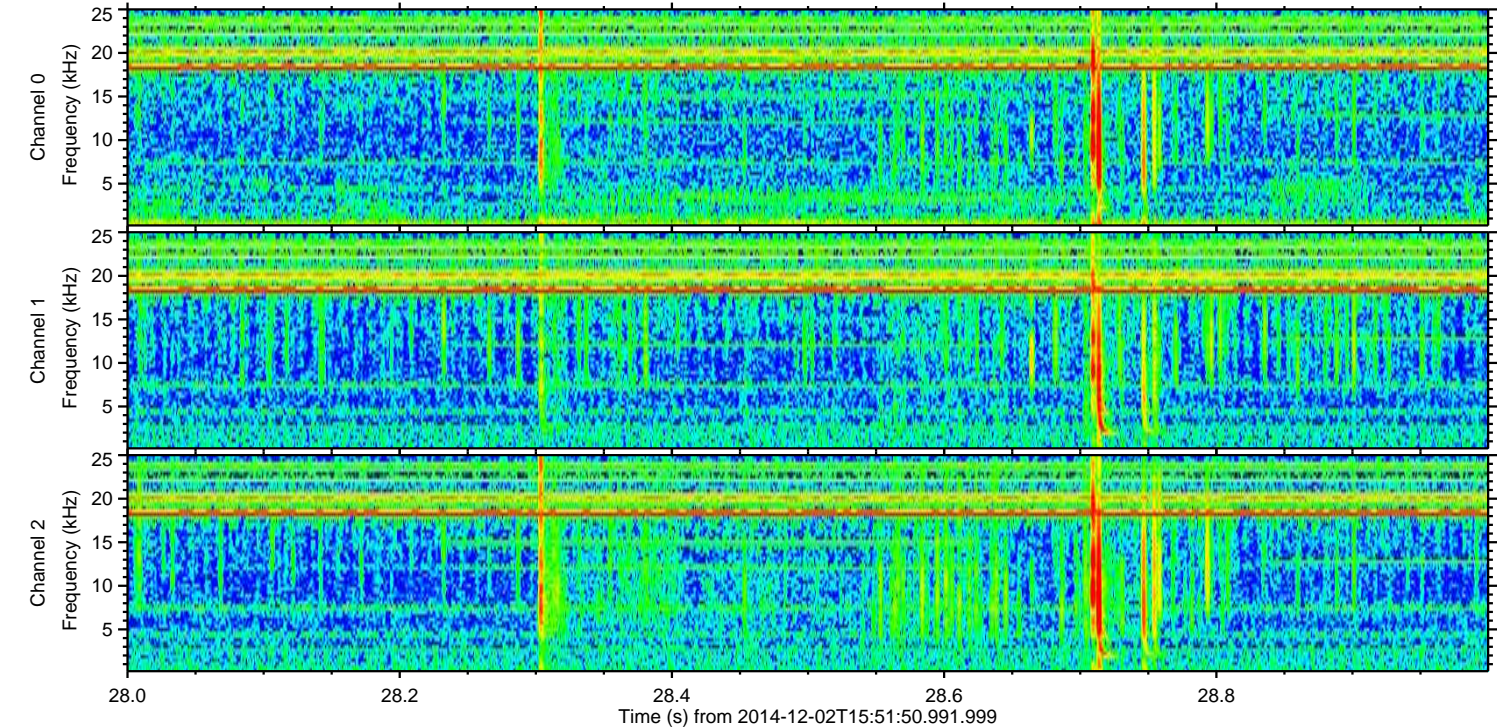
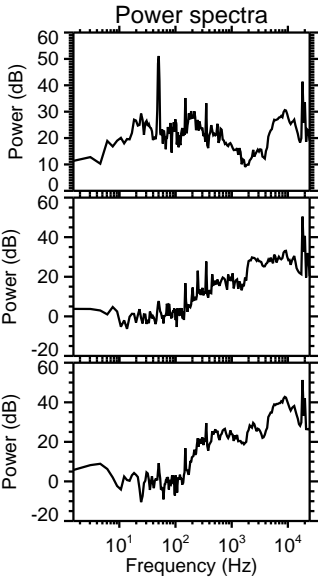
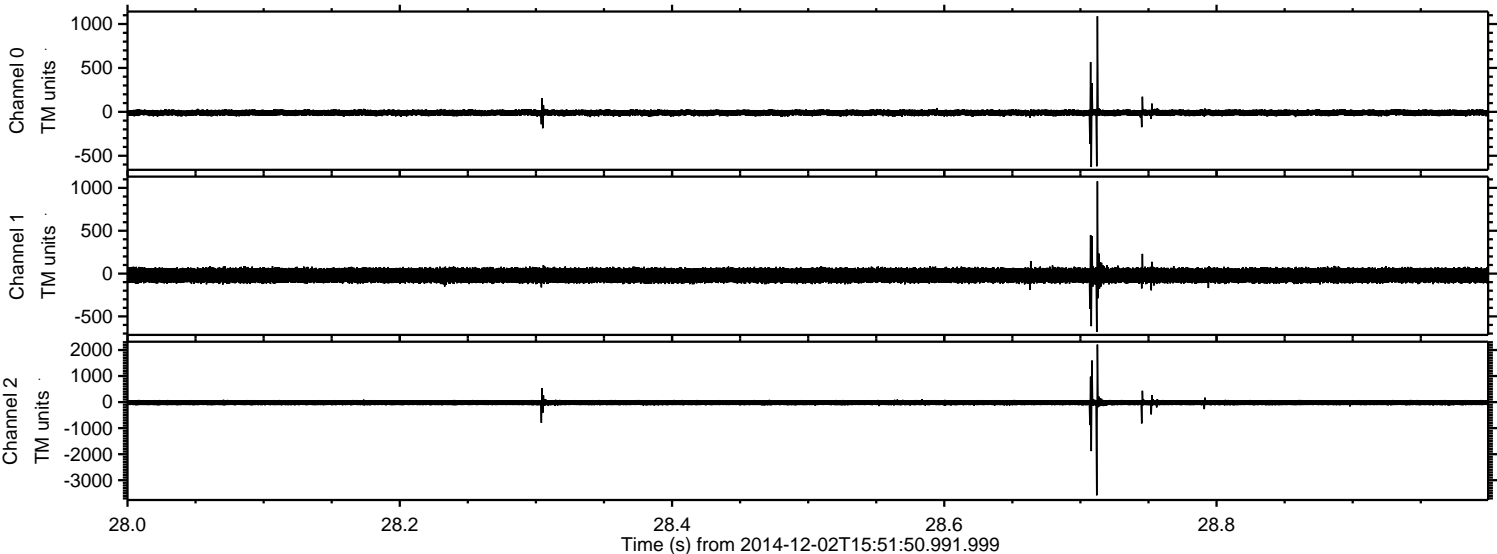


ELMAVAN 3D WAVEFORMS (Measured data sampled at 50 kHz) 49795 packets of 144 samples from 2014-12-02T15:51:50.991.999. Part 134/144

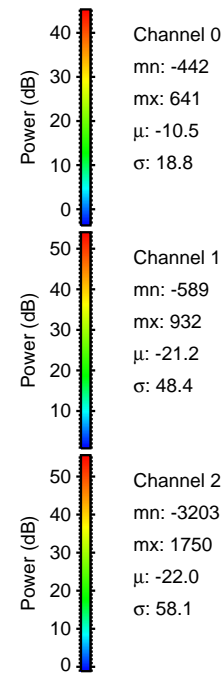
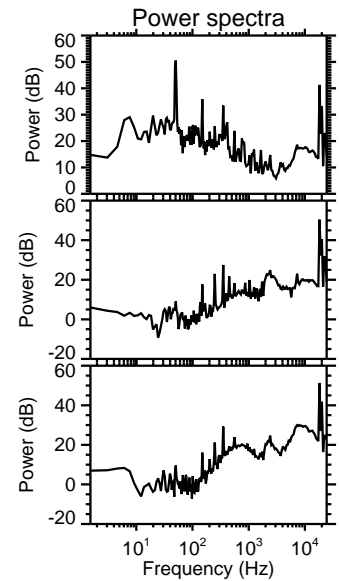
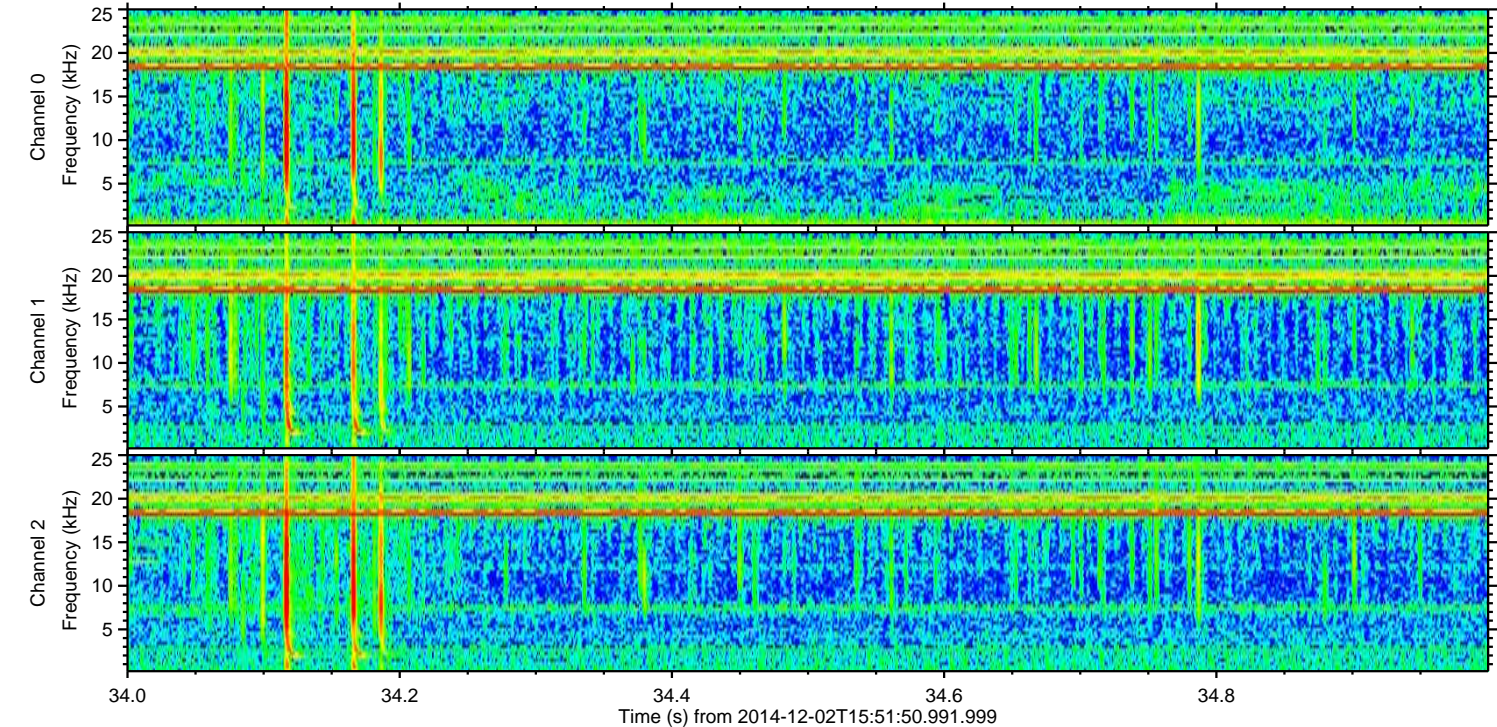
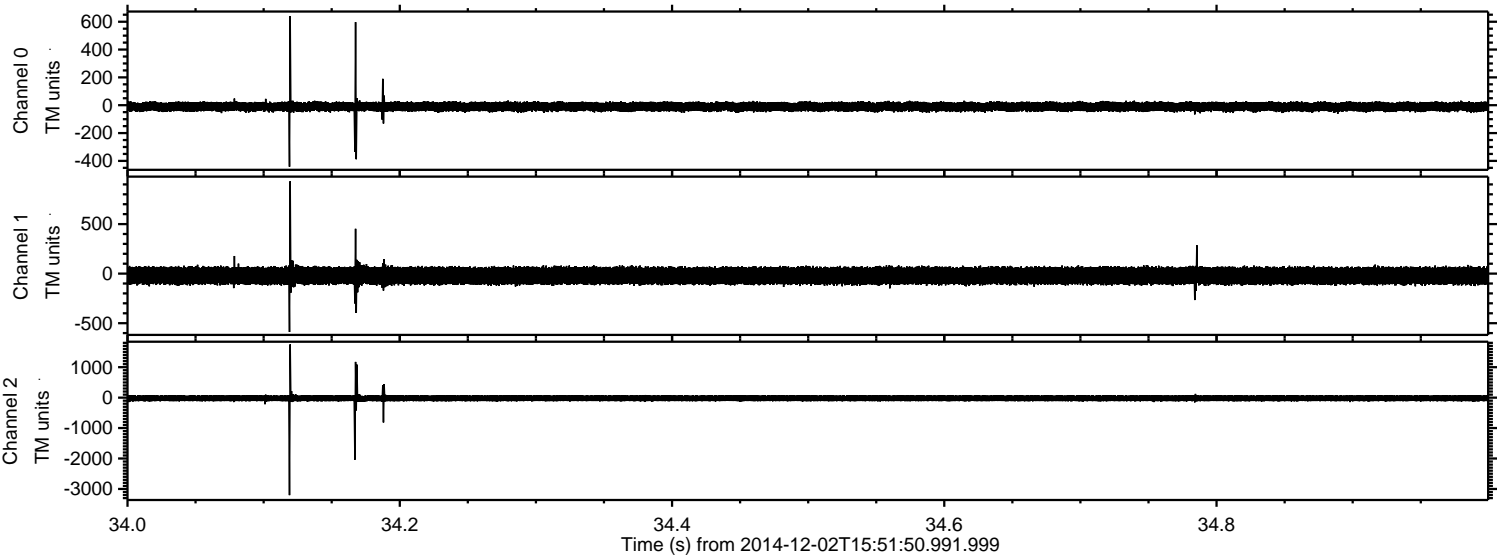
Processed Tue Dec 2 16:59:01 2014 by ELM ver.2012-10-06 from 001__elm20141202_155149__dat00.bin



Processed Tue Dec 2 16:59:02 2014 by ELM ver.2012-10-06 from 001__elm20141202_155149__dat00.bin



Processed Tue Dec 2 16:59:03 2014 by ELM ver.2012-10-06 from 001__elm20141202_155149__dat00.bin



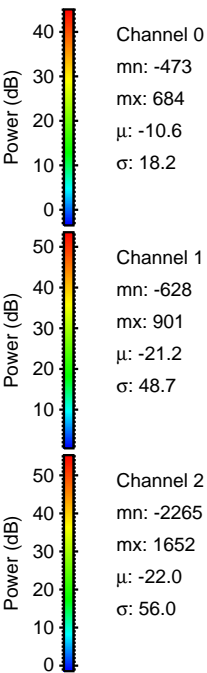
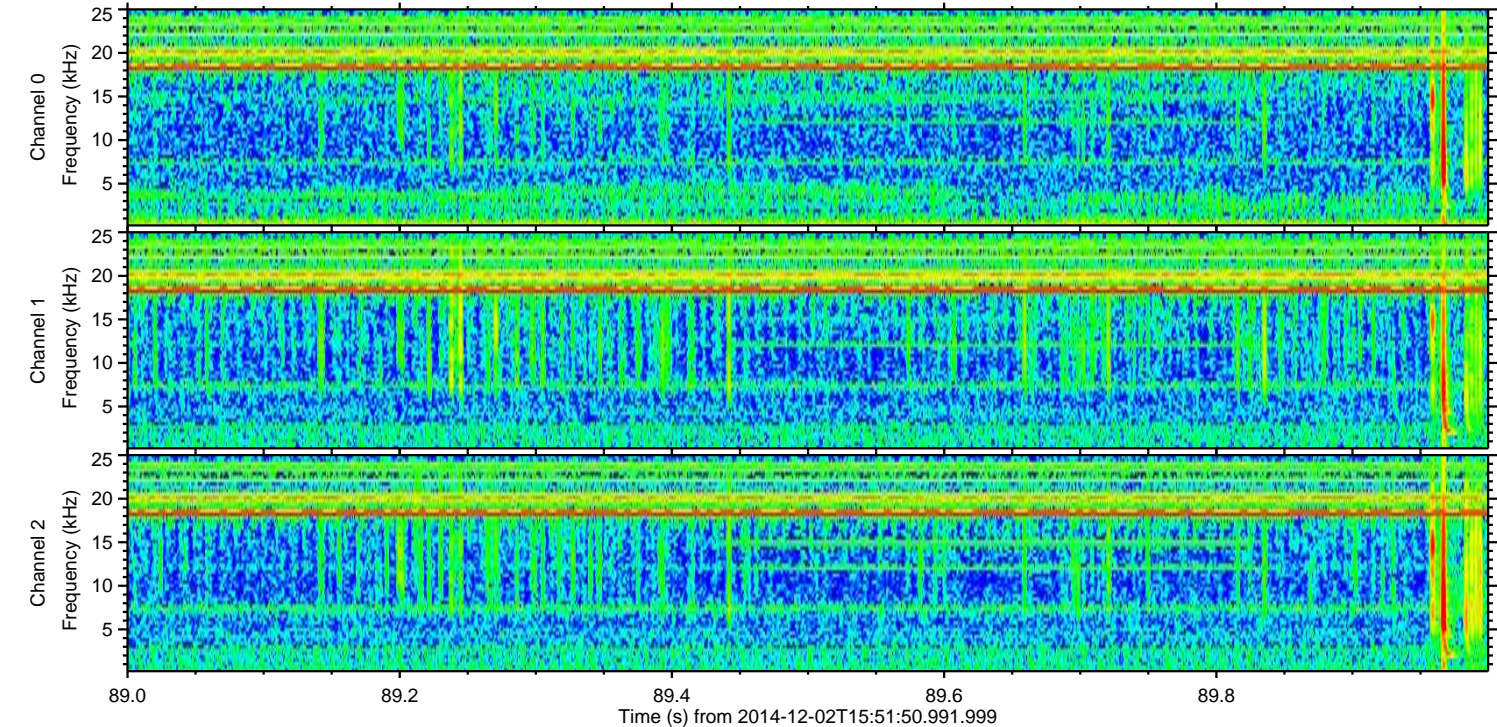
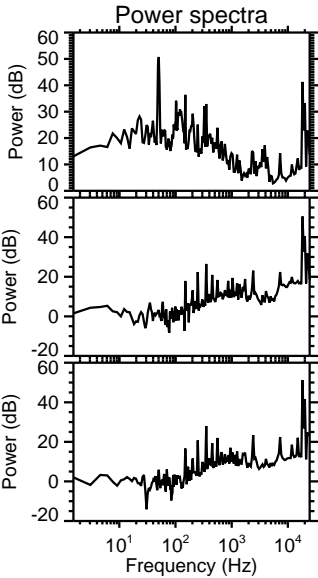
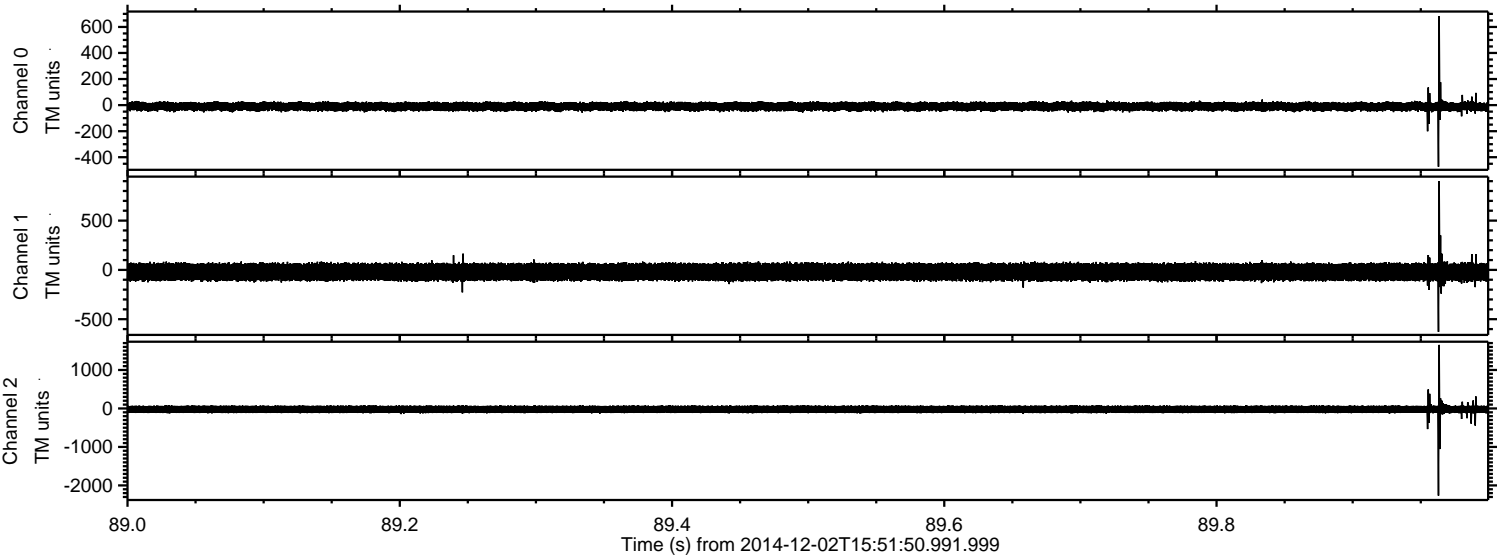
Power spectra

Channel 0
mn: -442
mx: 641
 μ : -10.5
 σ : 18.8

Channel 1
mn: -589
mx: 932
 μ : -21.2
 σ : 48.4

Channel 2
mn: -3203
mx: 1750
 μ : -22.0
 σ : 58.1

Processed Tue Dec 2 16:59:04 2014 by ELM ver.2012-10-06 from 001__elm20141202_155149__dat00.bin



ELMAVAN 3D WAVEFORMS (Measured data sampled at 50 kHz) 49795 packets of 144 samples from 2014-12-02T15:51:50.991.999. Part 106/144

