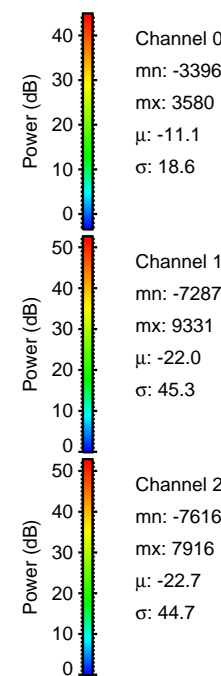
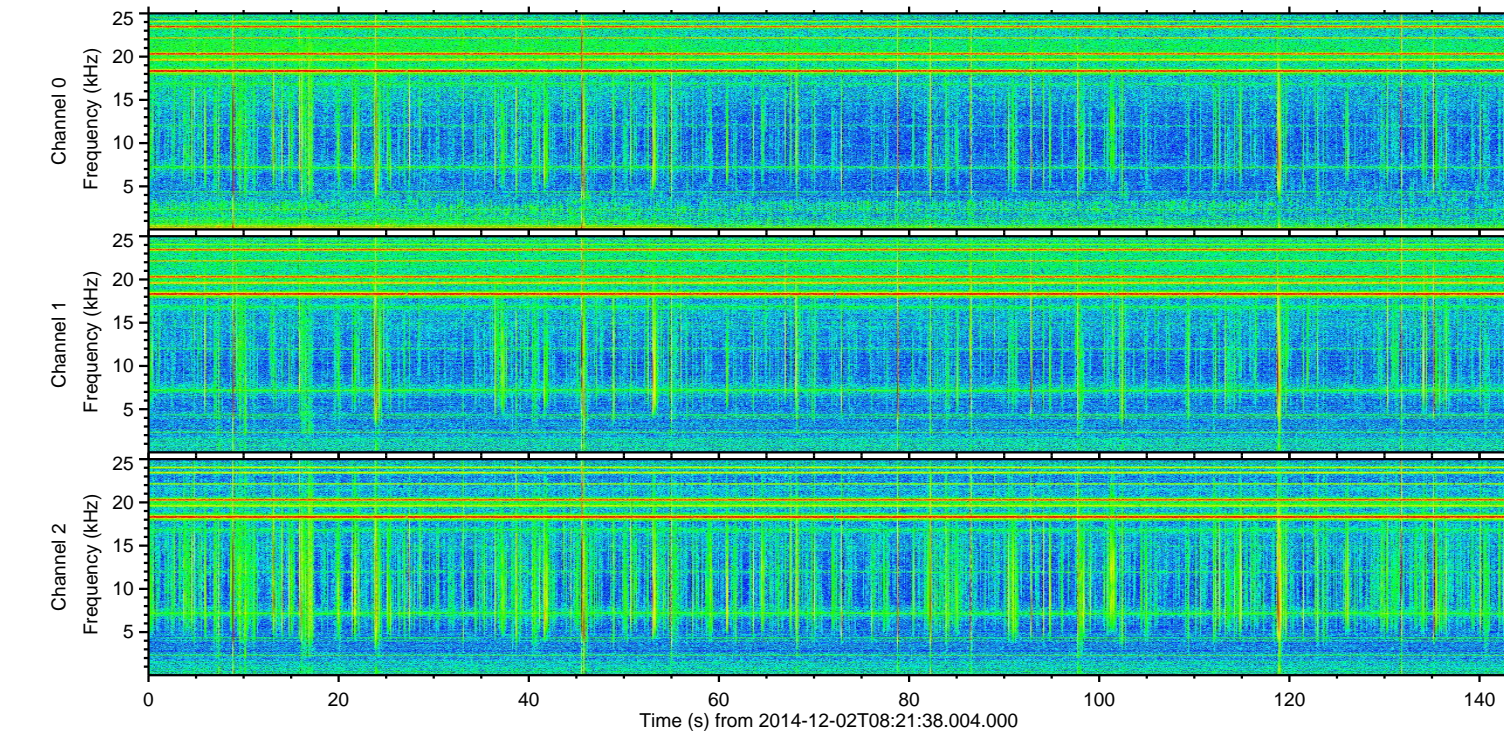
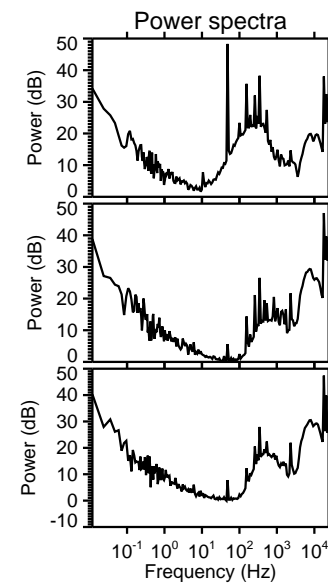
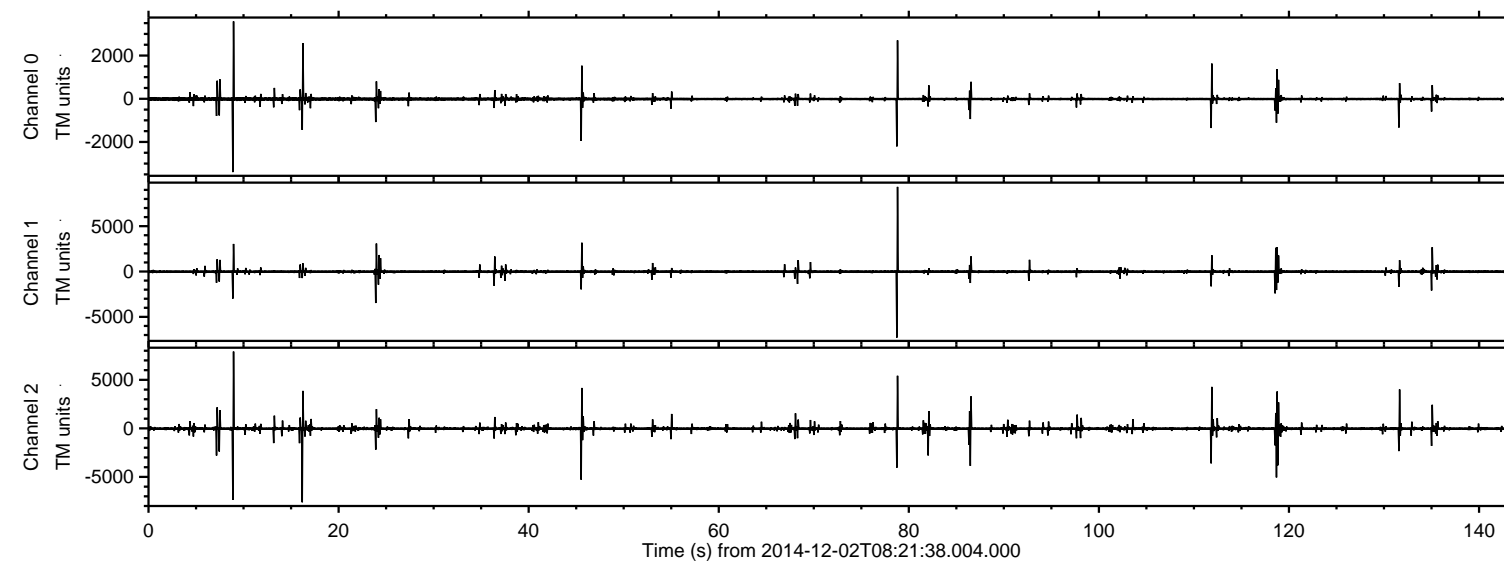
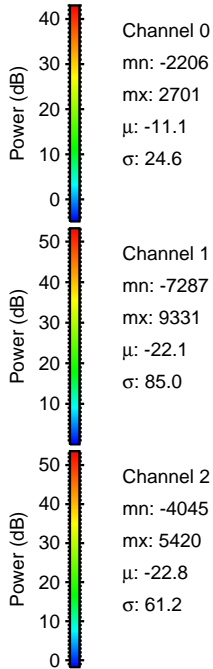
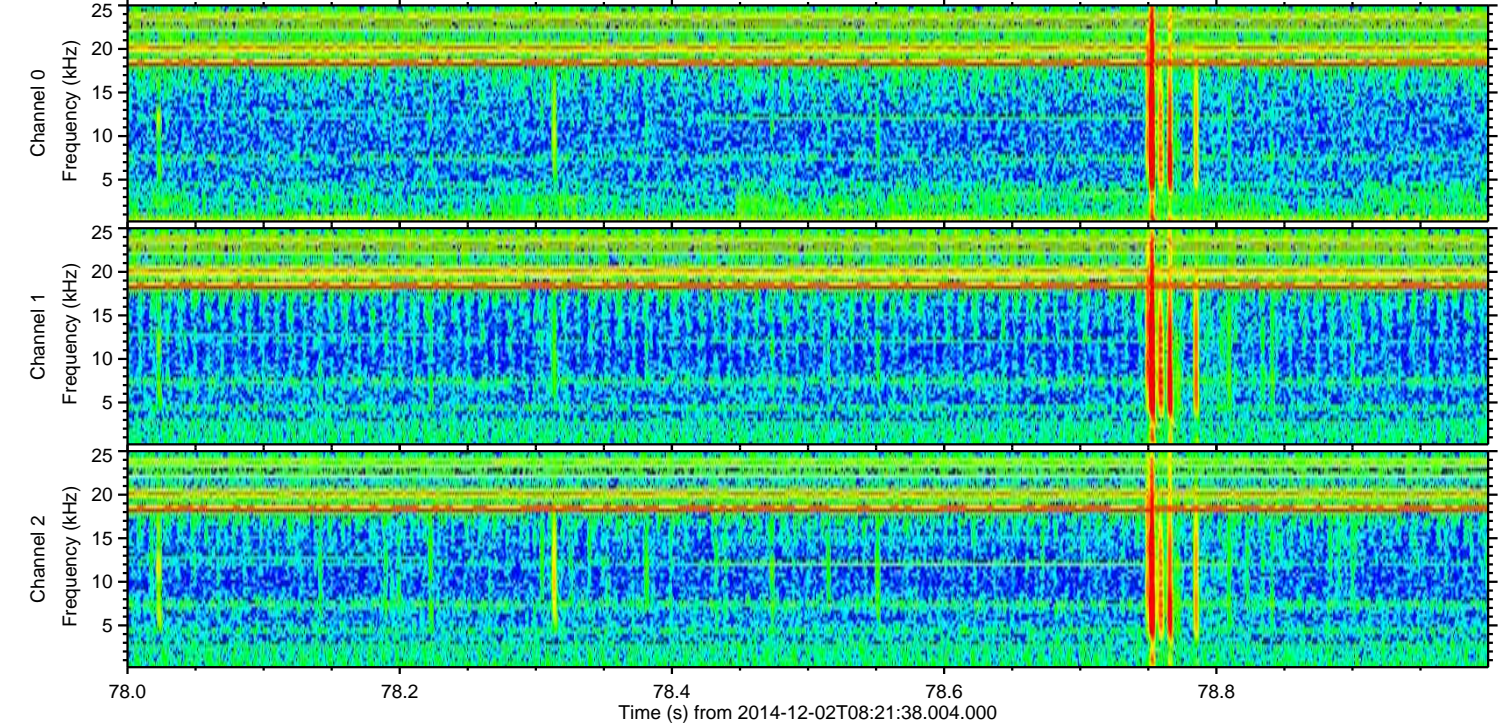
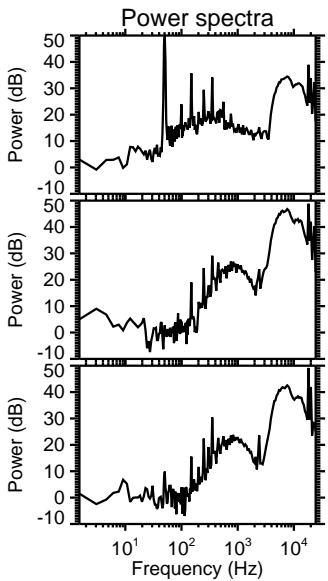
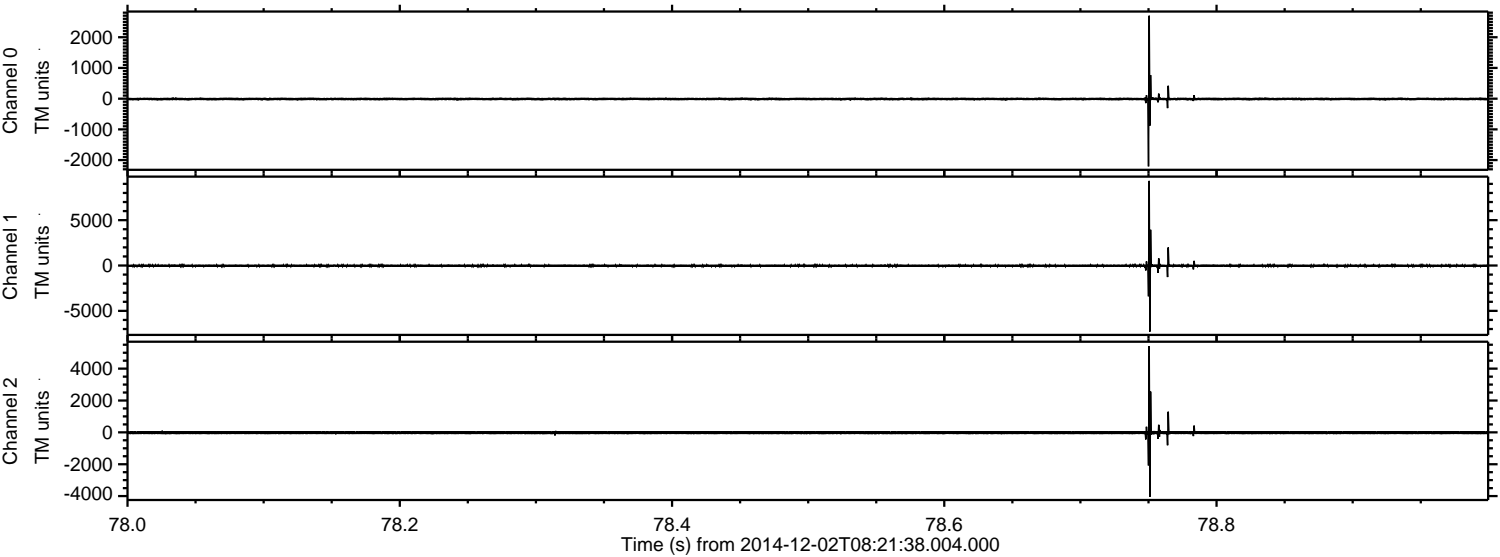


ELMAVAN 3D WAVEFORMS (Measured data sampled at 50 kHz) 49711 packets of 144 samples from 2014-12-02T08:21:38.004.000.

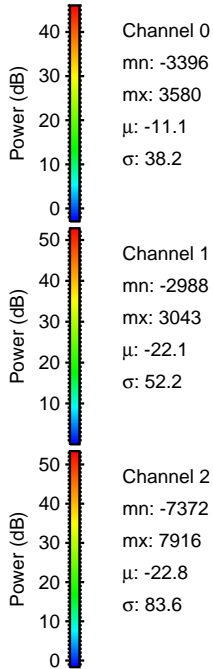
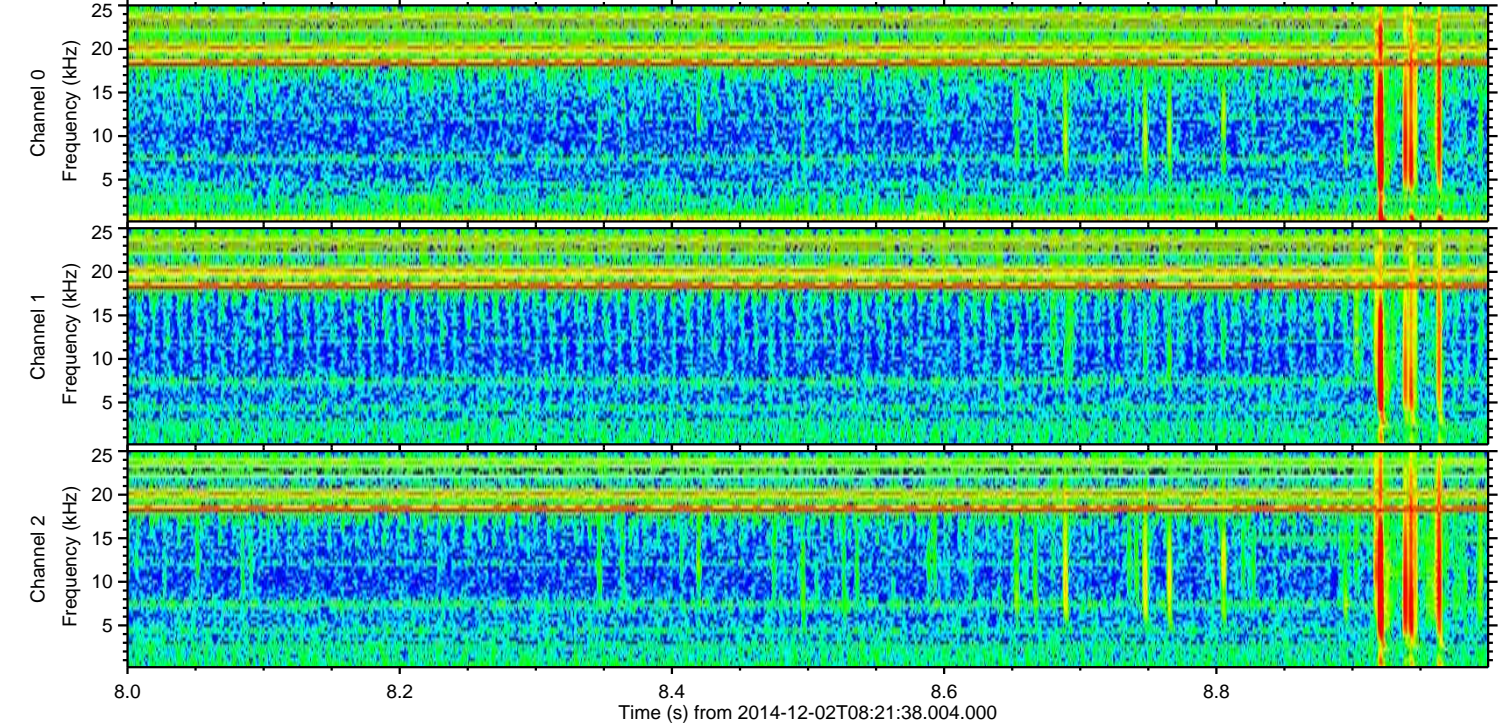
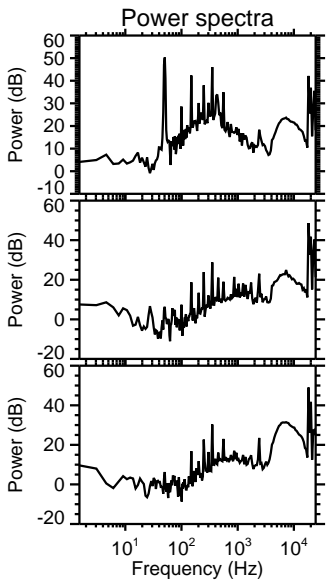
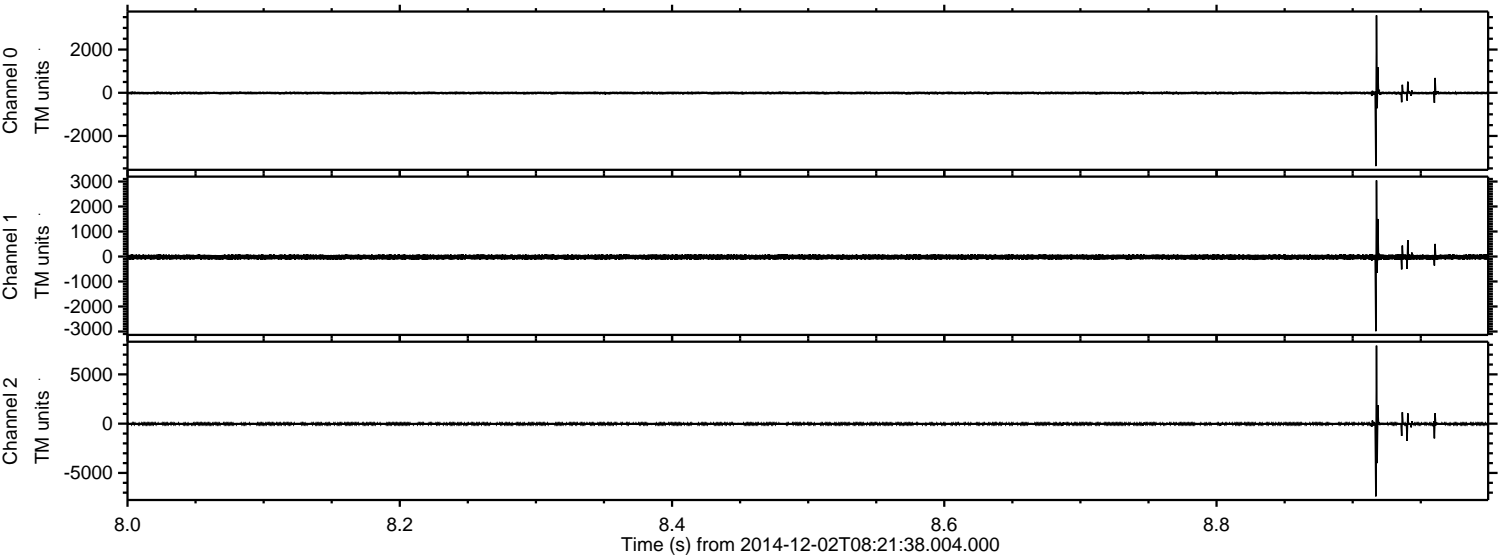
Processed Tue Dec 2 09:34:05 2014 by ELM ver.2012-10-06 from 001__elm20141202_082136__dat00.bin



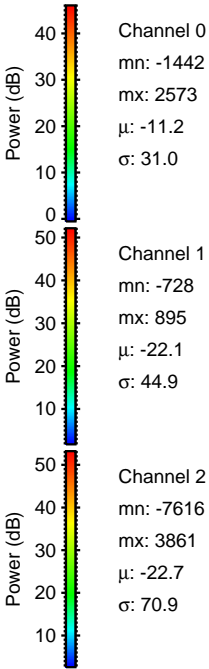
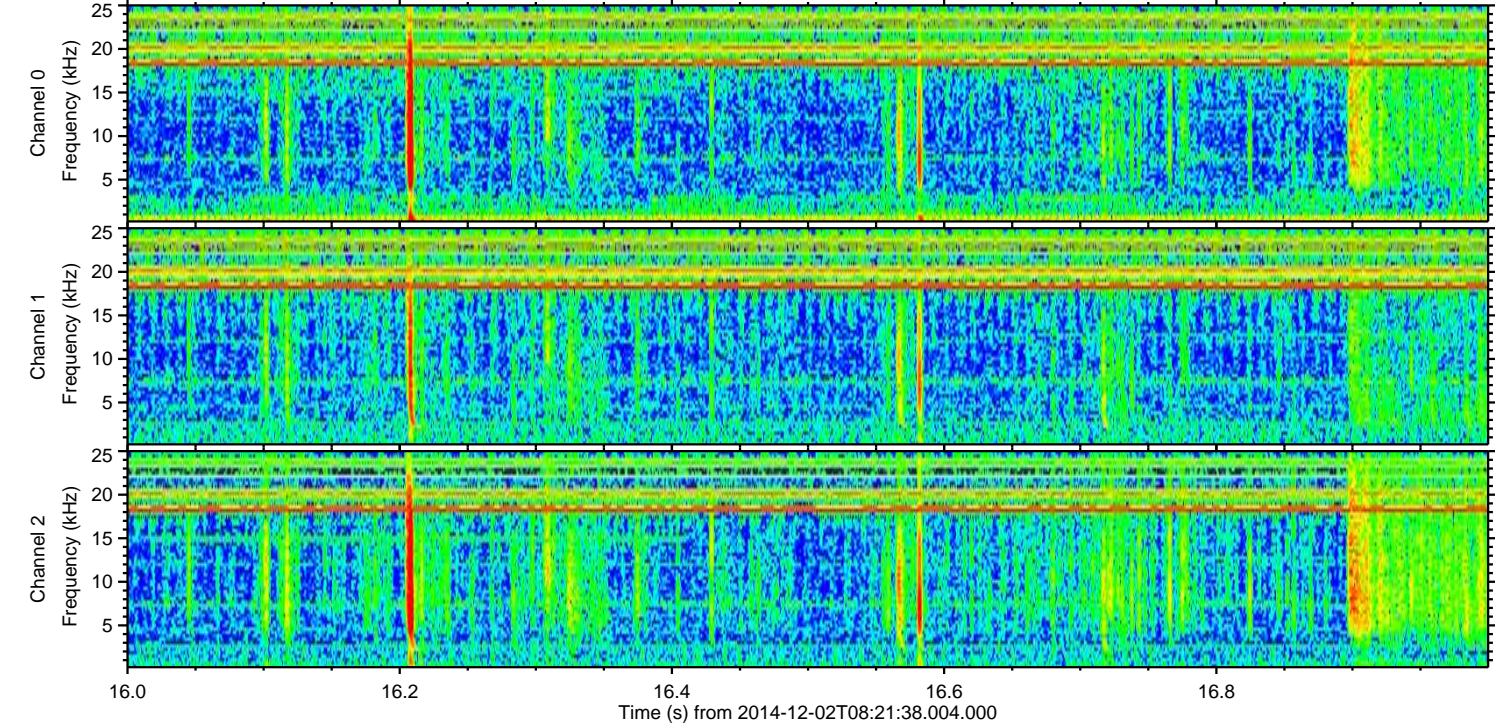
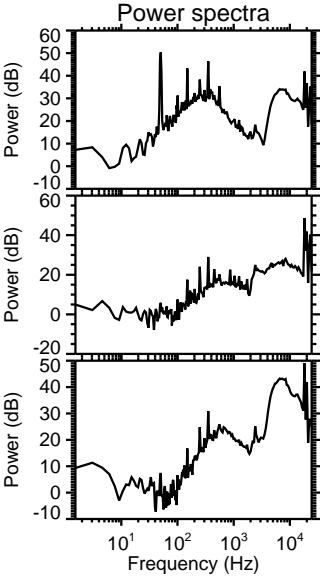
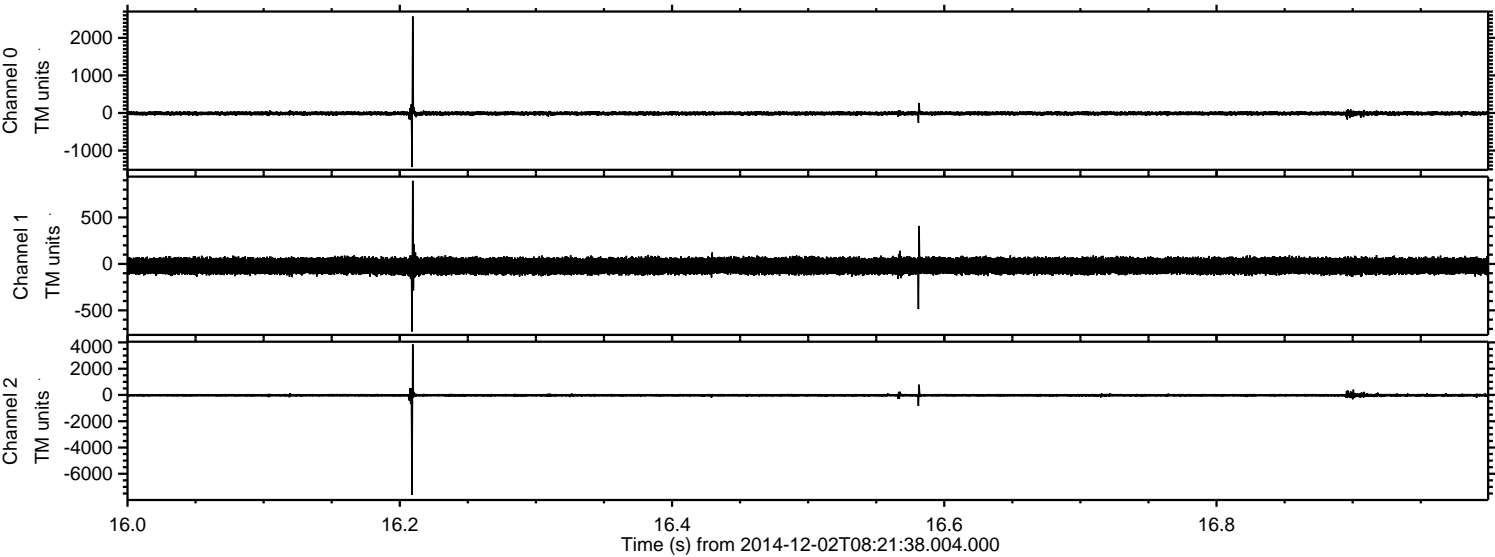
Processed Tue Dec 2 09:34:20 2014 by ELM ver.2012-10-06 from 001__elm20141202_082136__dat00.bin



Processed Tue Dec 2 09:34:21 2014 by ELM ver.2012-10-06 from 001__elm20141202_082136__dat00.bin

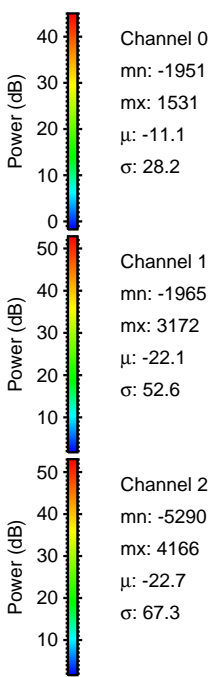
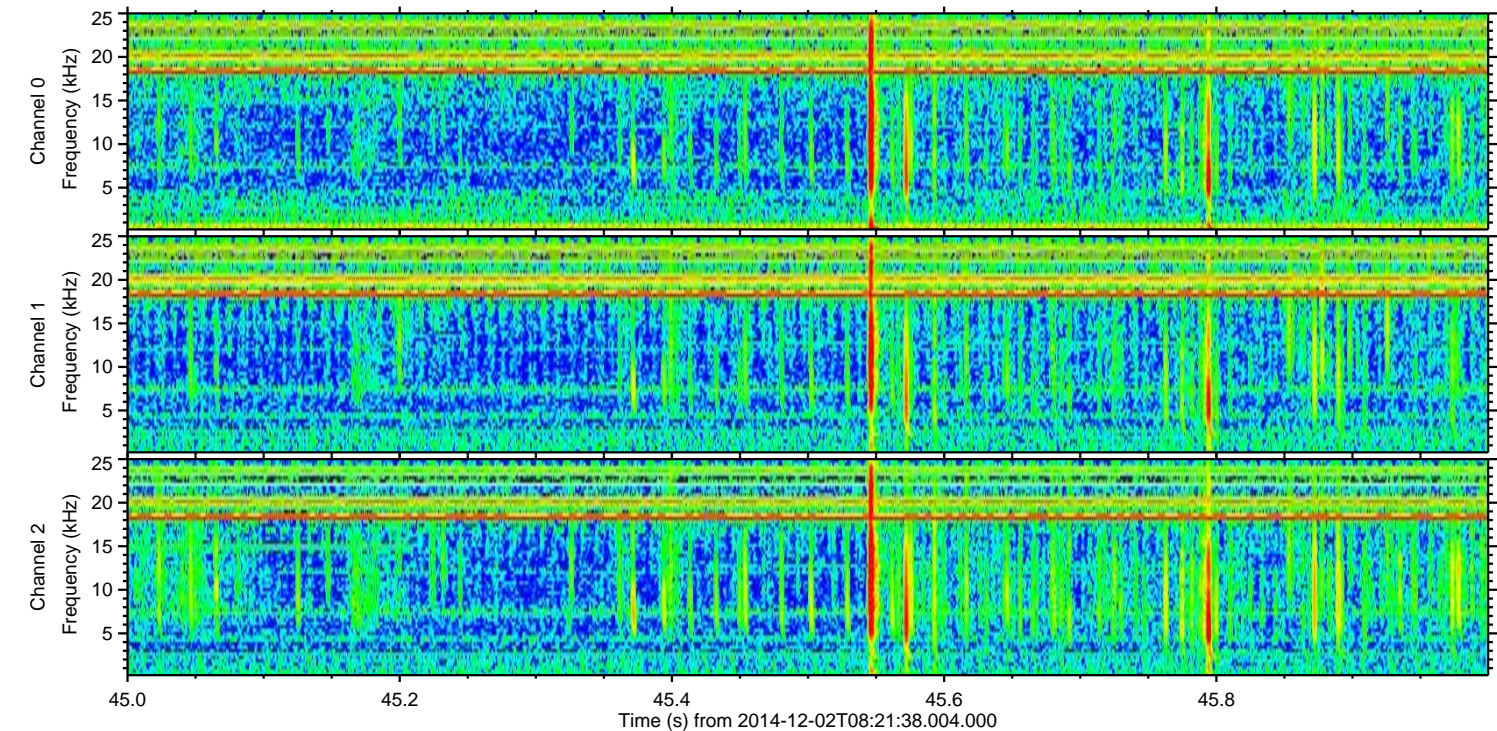
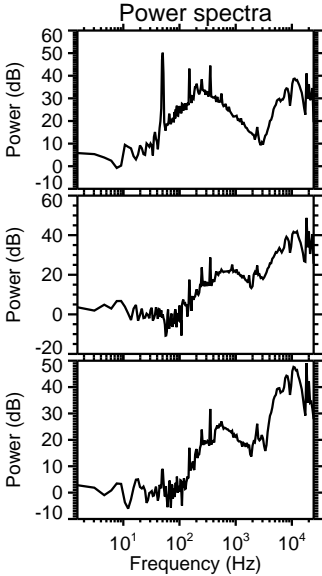
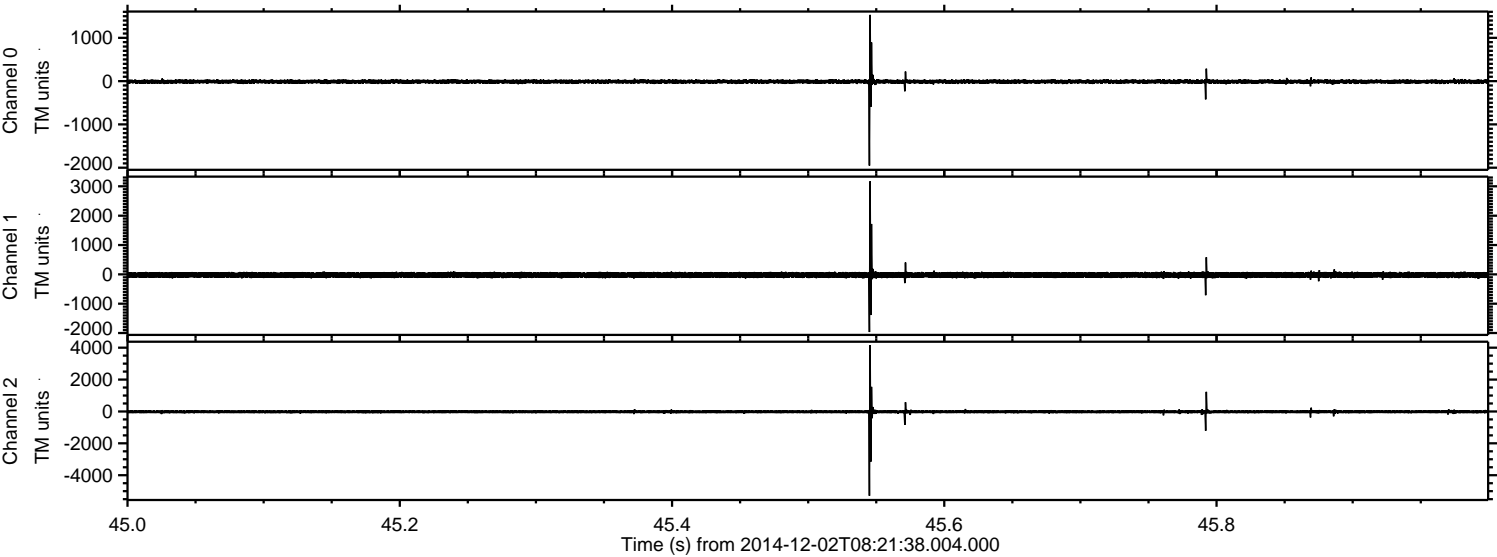


Processed Tue Dec 2 09:34:23 2014 by ELM ver.2012-10-06 from 001__elm20141202_082136__dat00.bin



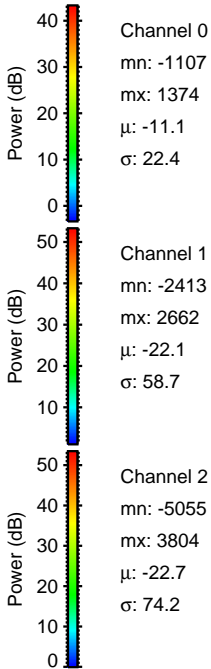
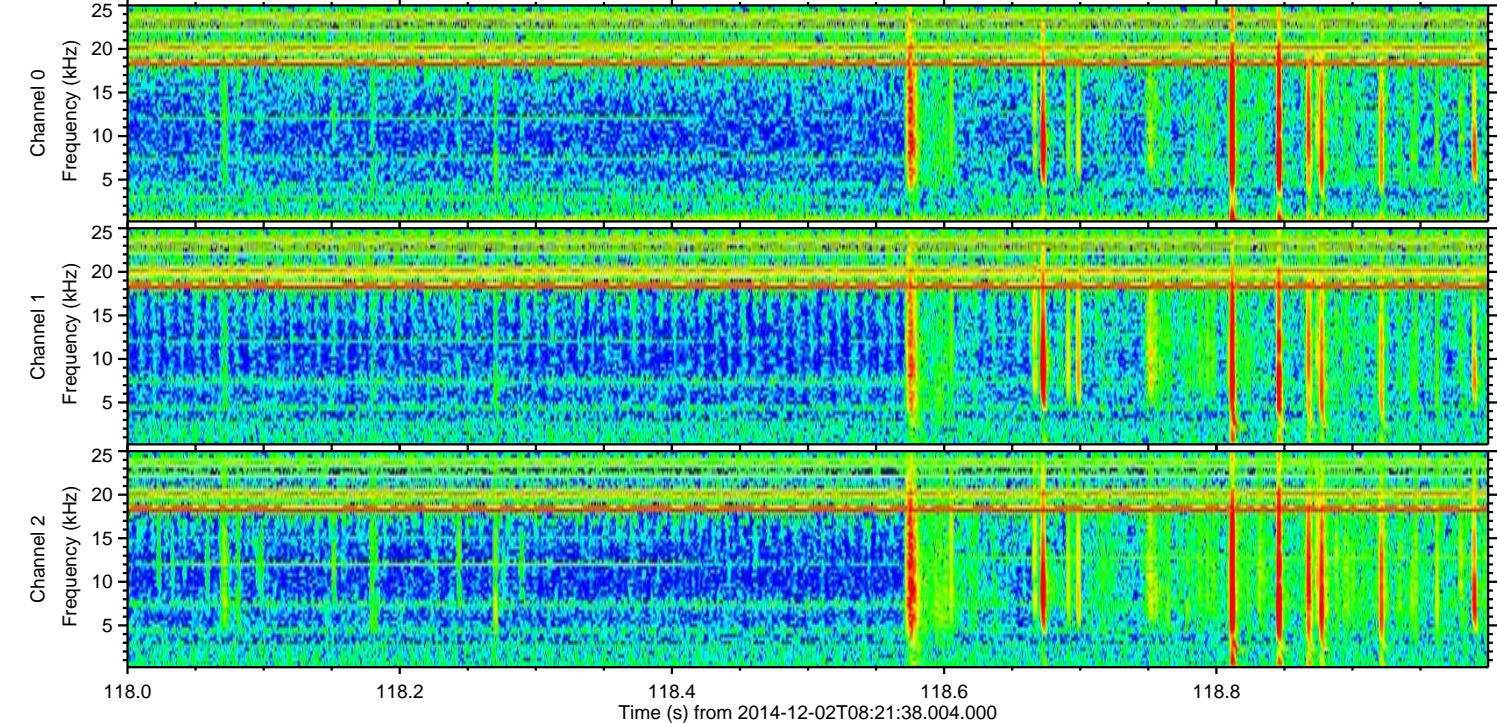
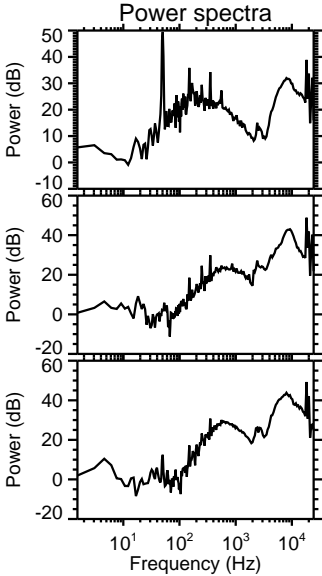
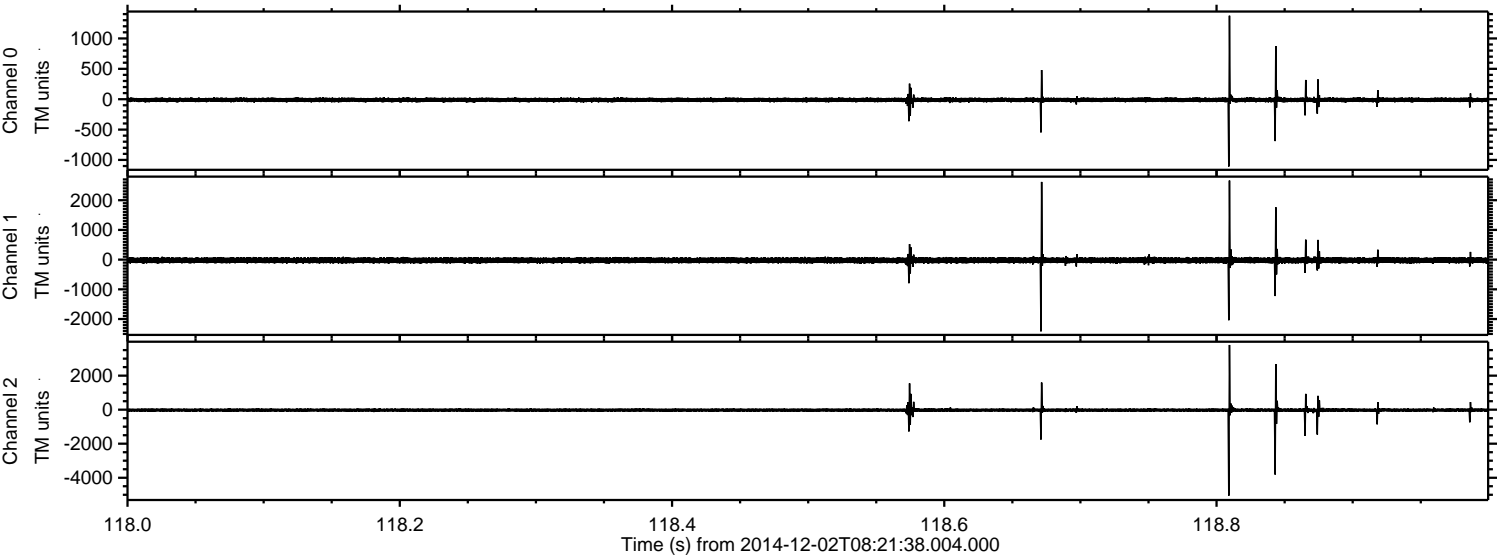
ELMAVAN 3D WAVEFORMS (Measured data sampled at 50 kHz) 49711 packets of 144 samples from 2014-12-02T08:21:38.004.000. Part 46/144

Processed Tue Dec 2 09:34:24 2014 by ELM ver.2012-10-06 from 001__elm20141202_082136__dat00.bin



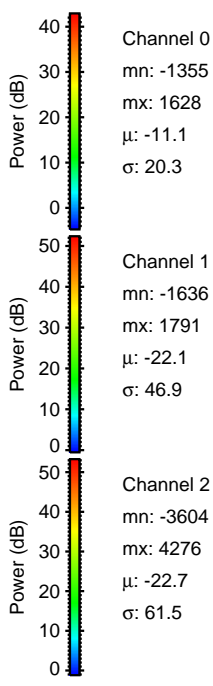
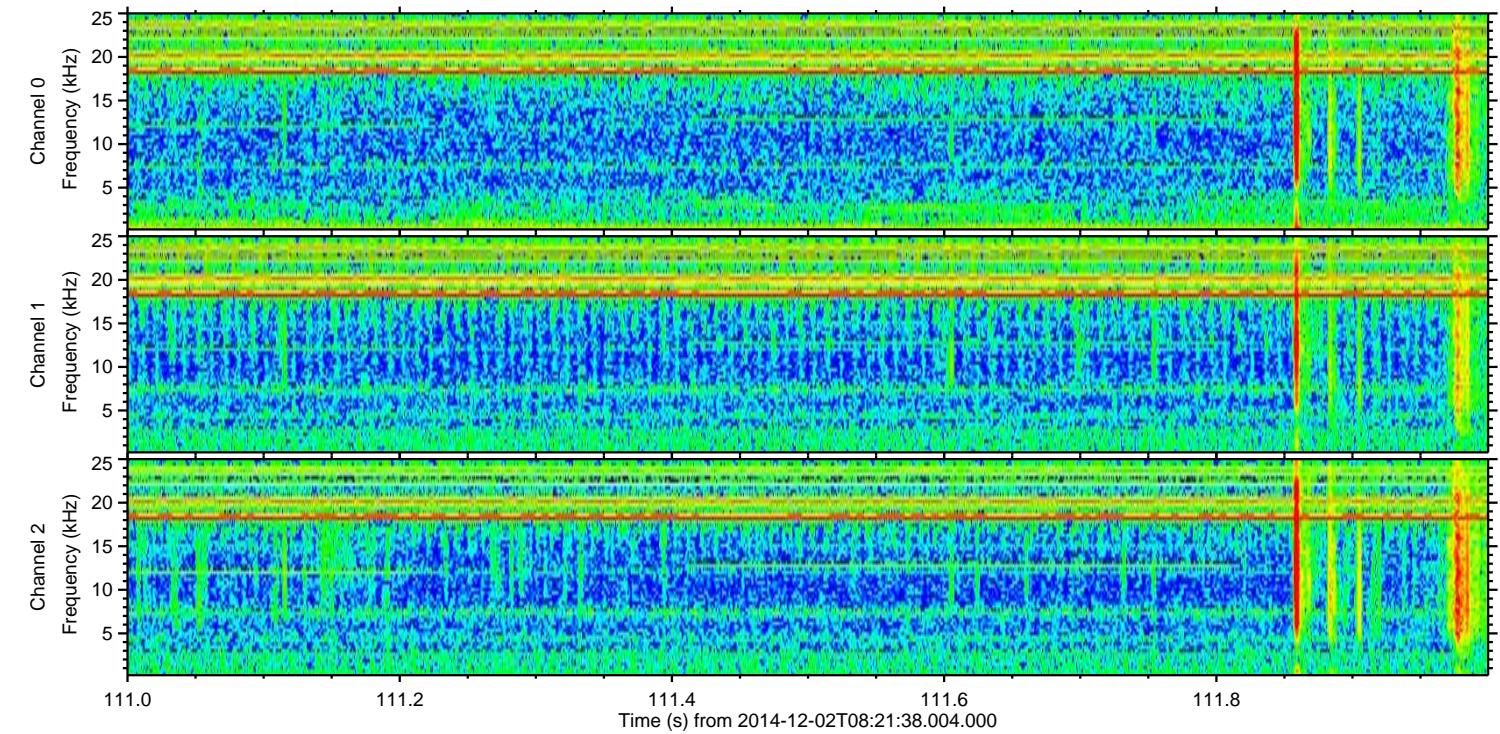
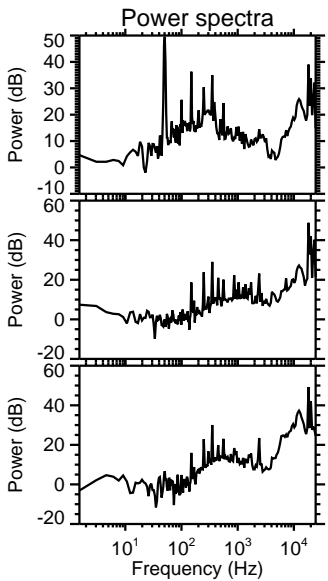
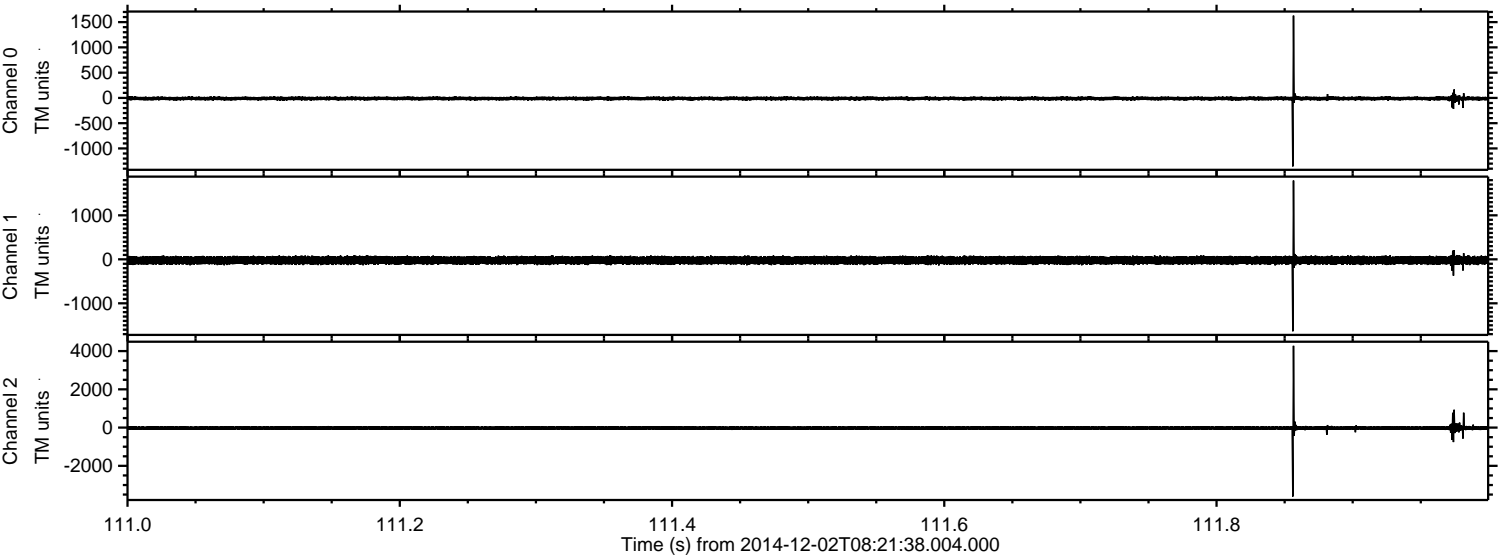
ELMAVAN 3D WAVEFORMS (Measured data sampled at 50 kHz) 49711 packets of 144 samples from 2014-12-02T08:21:38.004.000. Part 119/144

Processed Tue Dec 2 09:34:25 2014 by ELM ver.2012-10-06 from 001__elm20141202_082136__dat00.bin



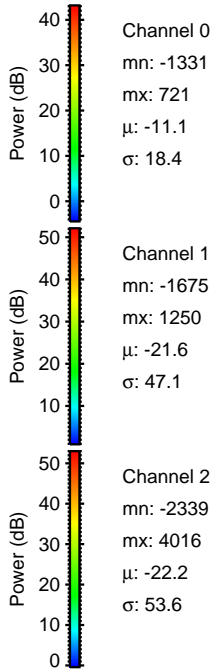
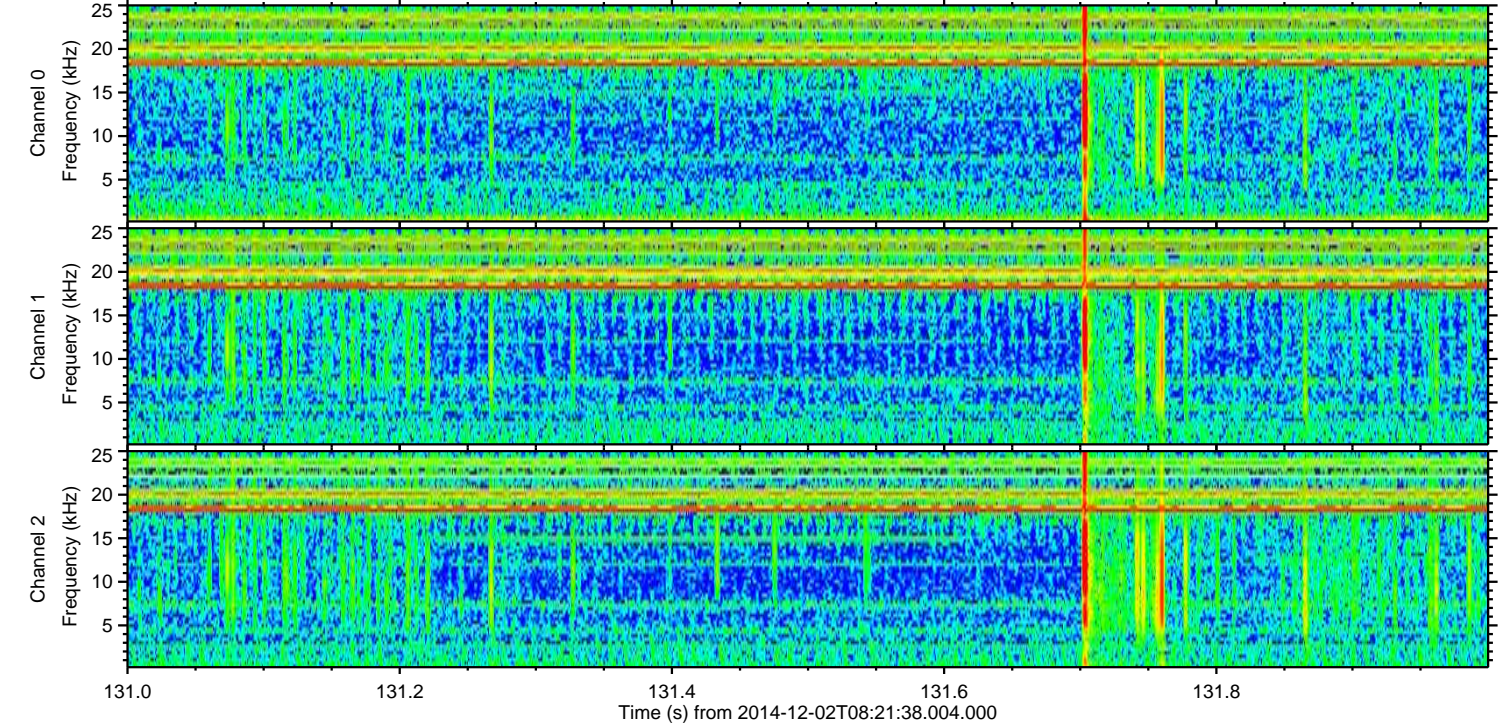
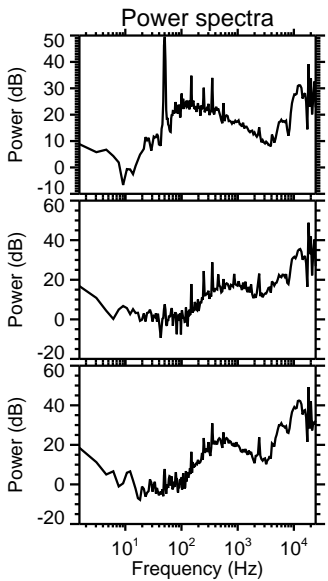
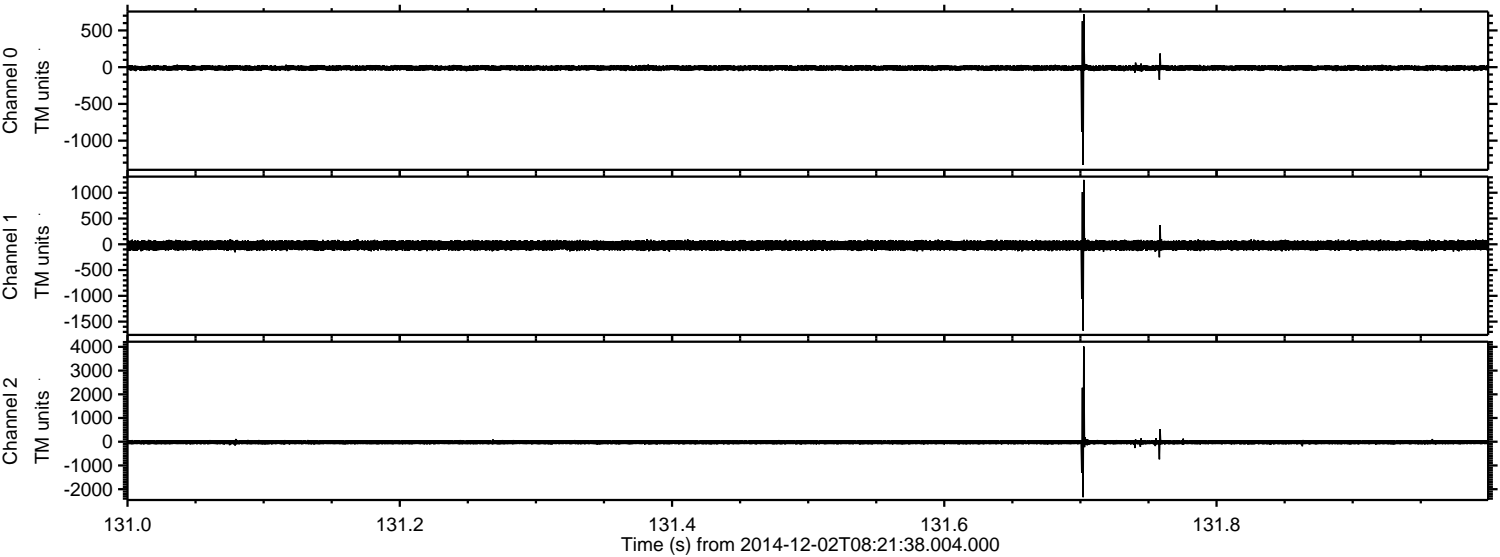
ELMAVAN 3D WAVEFORMS (Measured data sampled at 50 kHz) 49711 packets of 144 samples from 2014-12-02T08:21:38.004.000. Part 112/144

Processed Tue Dec 2 09:34:26 2014 by ELM ver.2012-10-06 from 001__elm20141202_082136__dat00.bin

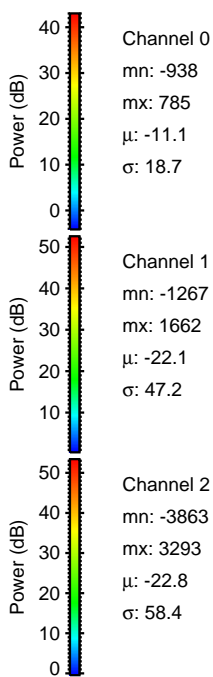
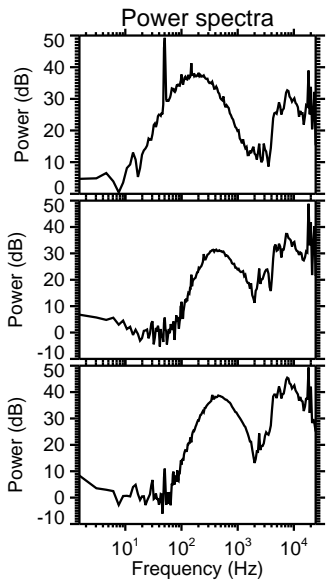
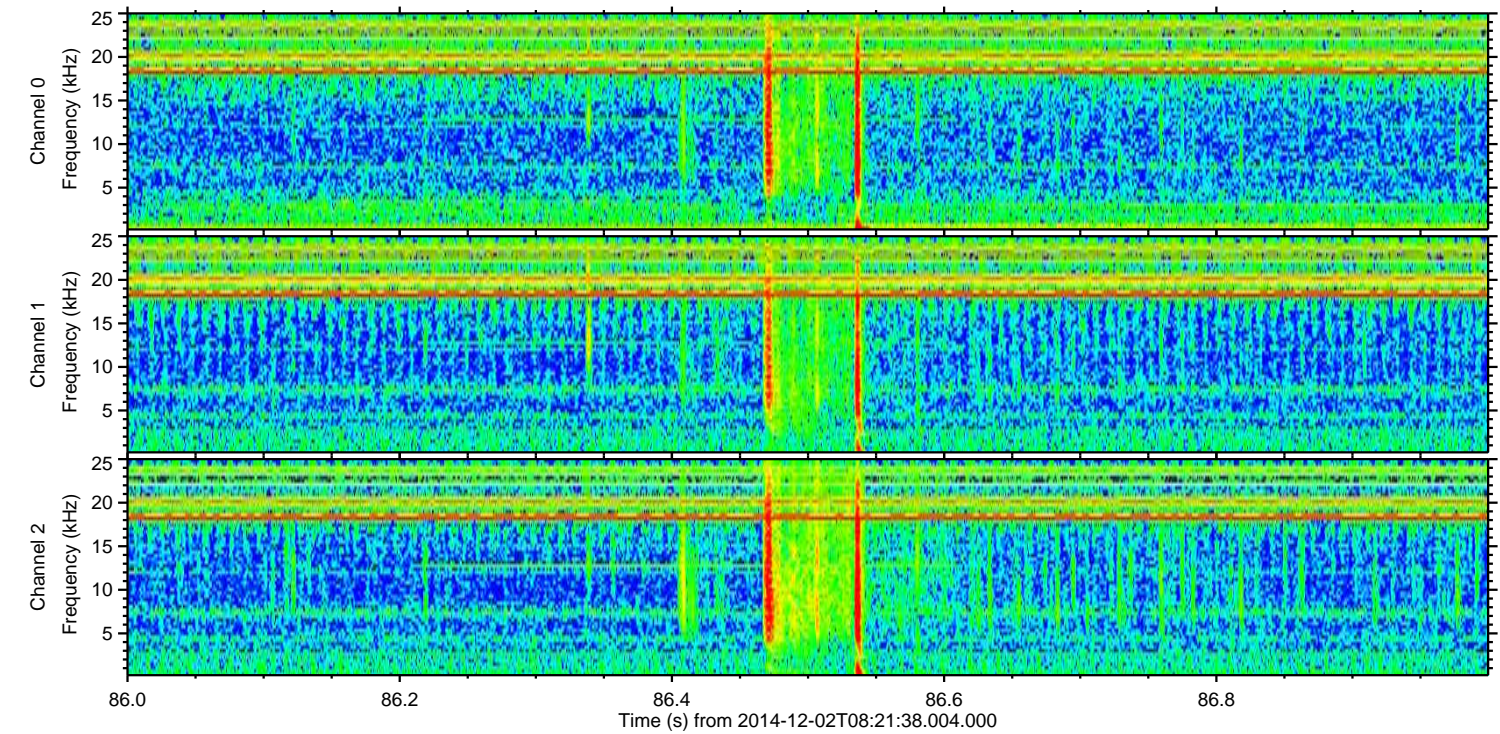
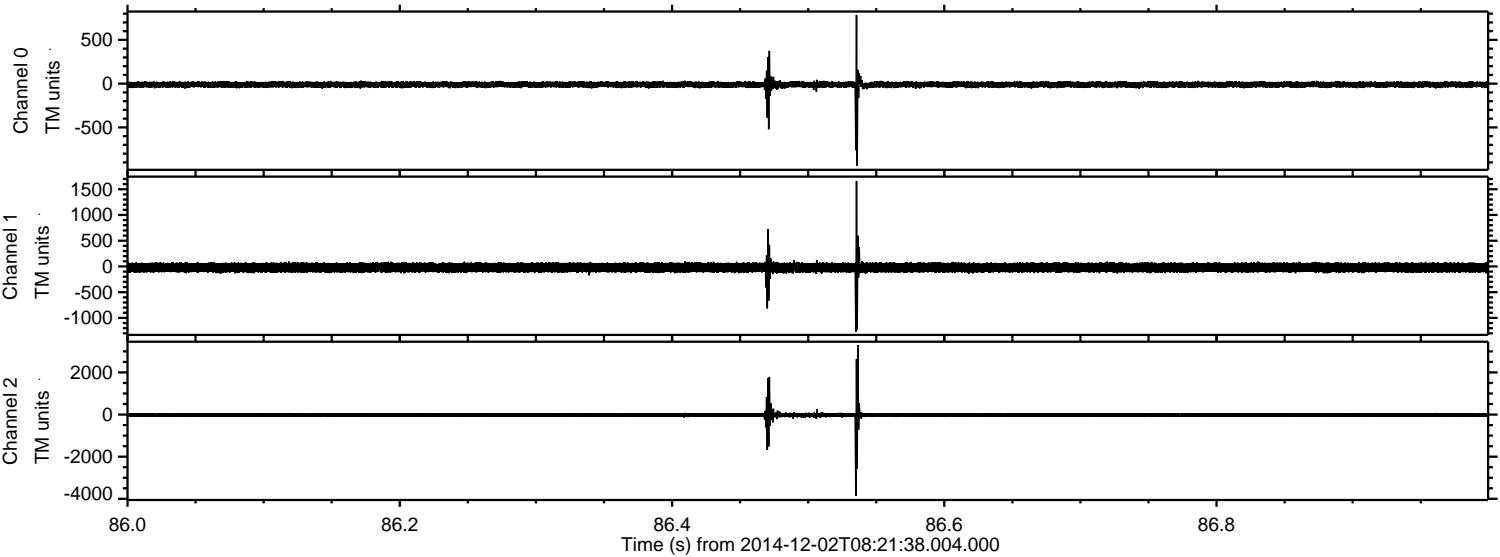


ELMAVAN 3D WAVEFORMS (Measured data sampled at 50 kHz) 49711 packets of 144 samples from 2014-12-02T08:21:38.004.000. Part 132/144

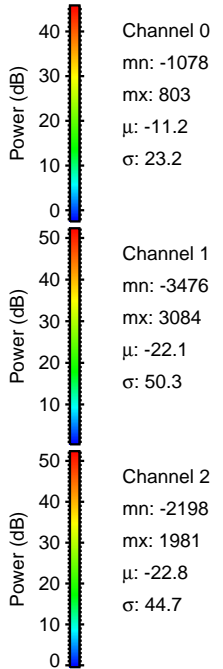
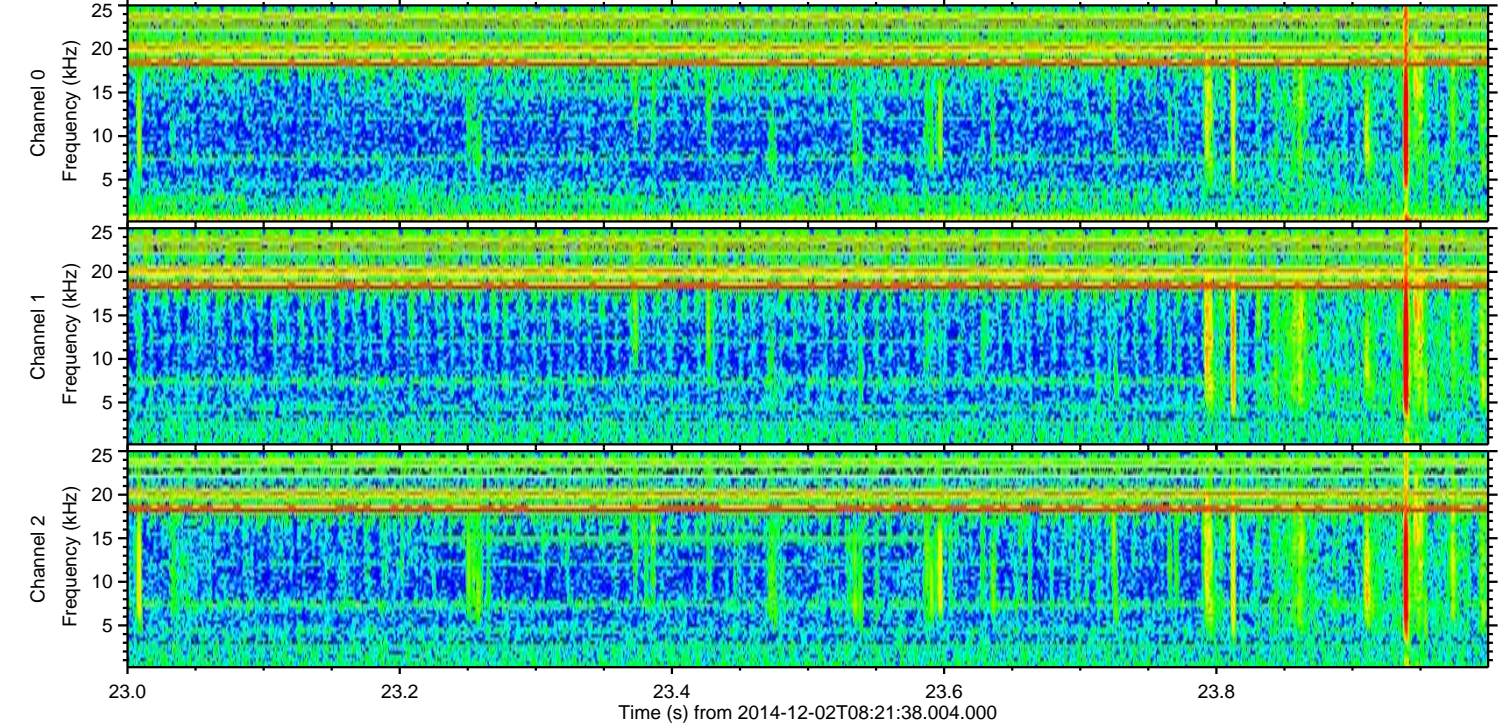
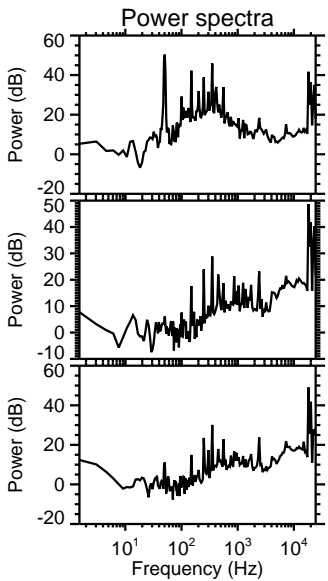
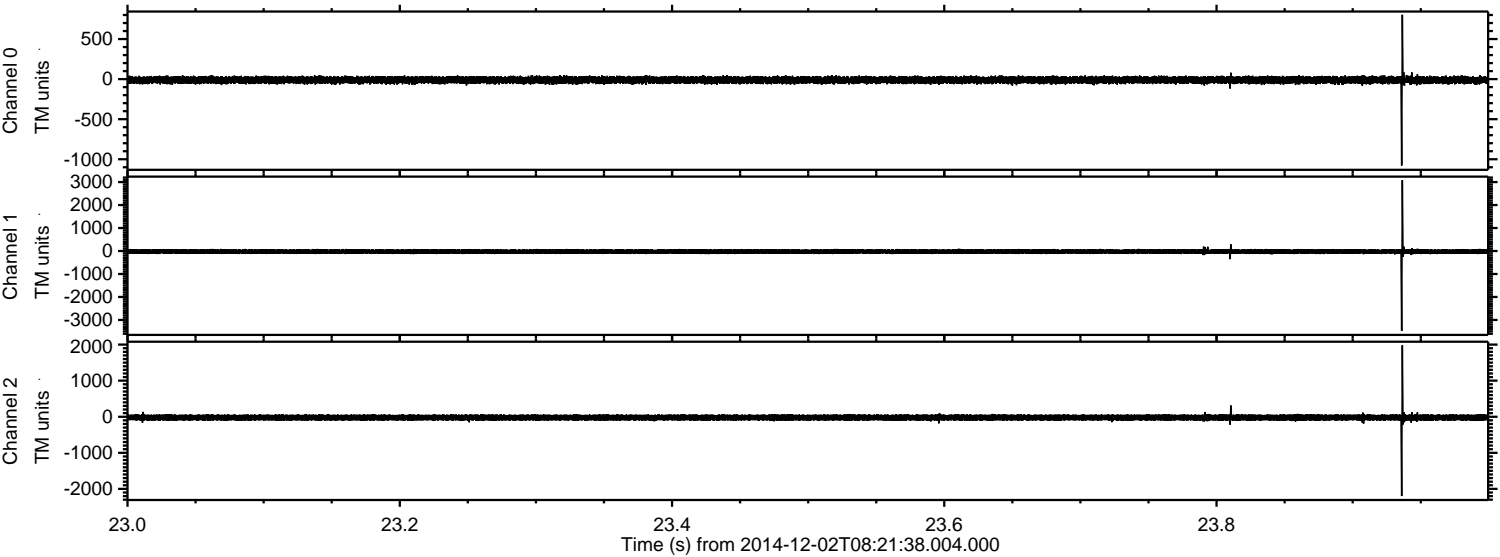
Processed Tue Dec 2 09:34:27 2014 by ELM ver.2012-10-06 from 001__elm20141202_082136__dat00.bin



Processed Tue Dec 2 09:34:28 2014 by ELM ver.2012-10-06 from 001__elm20141202_082136__dat00.bin



Processed Tue Dec 2 09:34:29 2014 by ELM ver.2012-10-06 from 001__elm20141202_082136__dat00.bin



Channel 0
mn: -1078
mx: 803
 μ : -11.2
 σ : 23.2

Channel 1
mn: -3476
mx: 3084
 μ : -22.1
 σ : 50.3

Channel 2
mn: -2198
mx: 1981
 μ : -22.8
 σ : 44.7

Processed Tue Dec 2 09:34:30 2014 by ELM ver.2012-10-06 from 001__elm20141202_082136__dat00.bin

