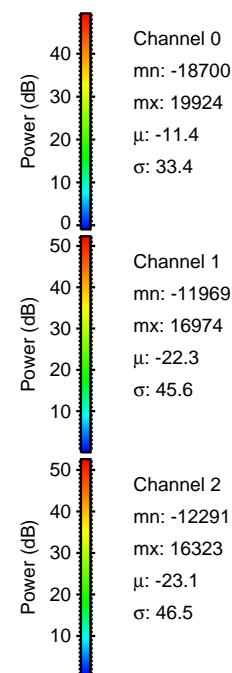
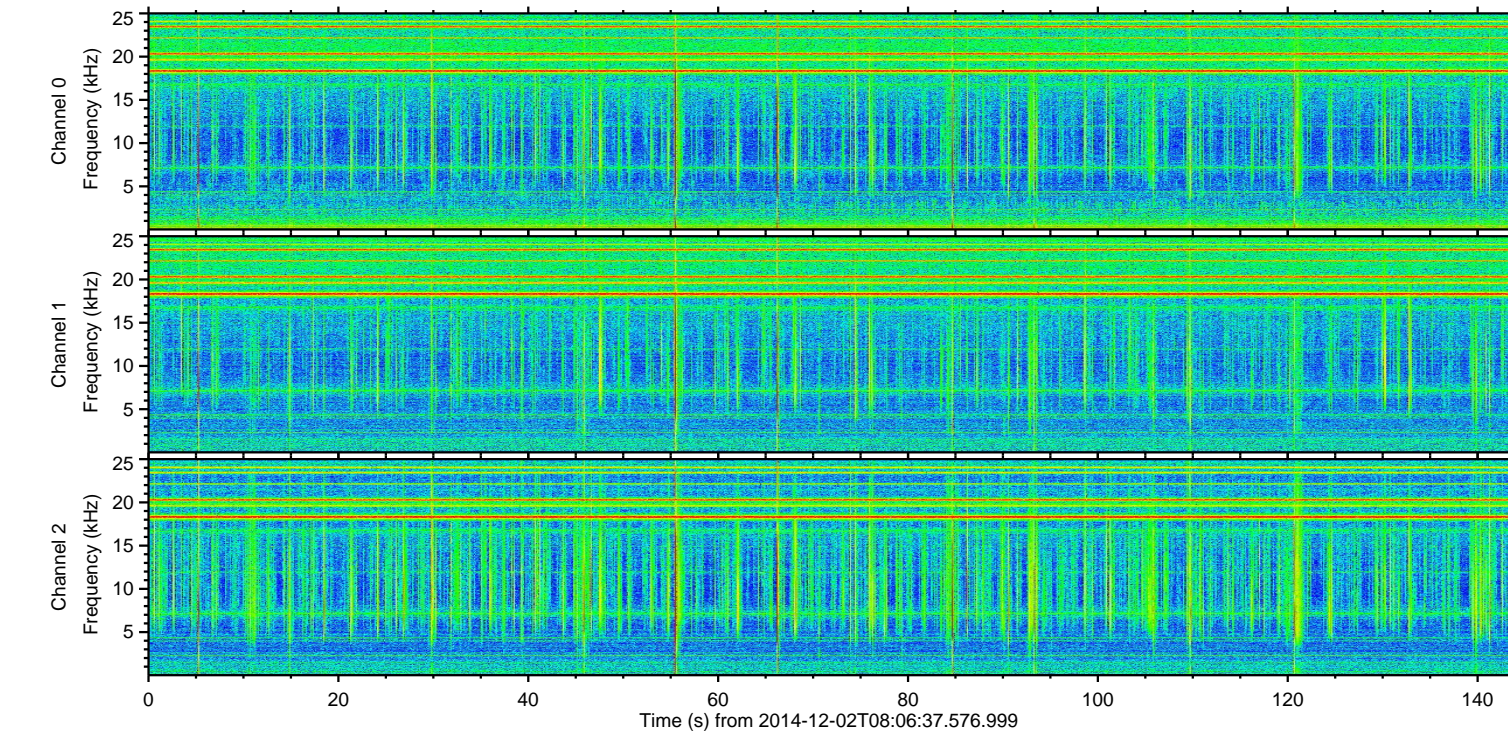
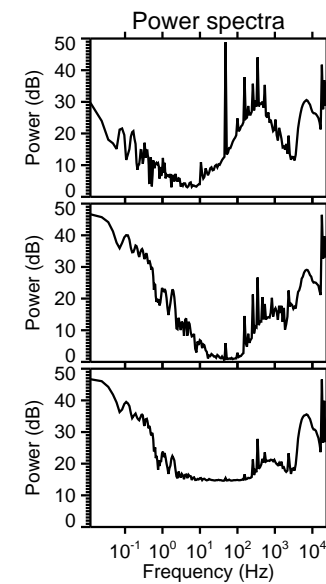
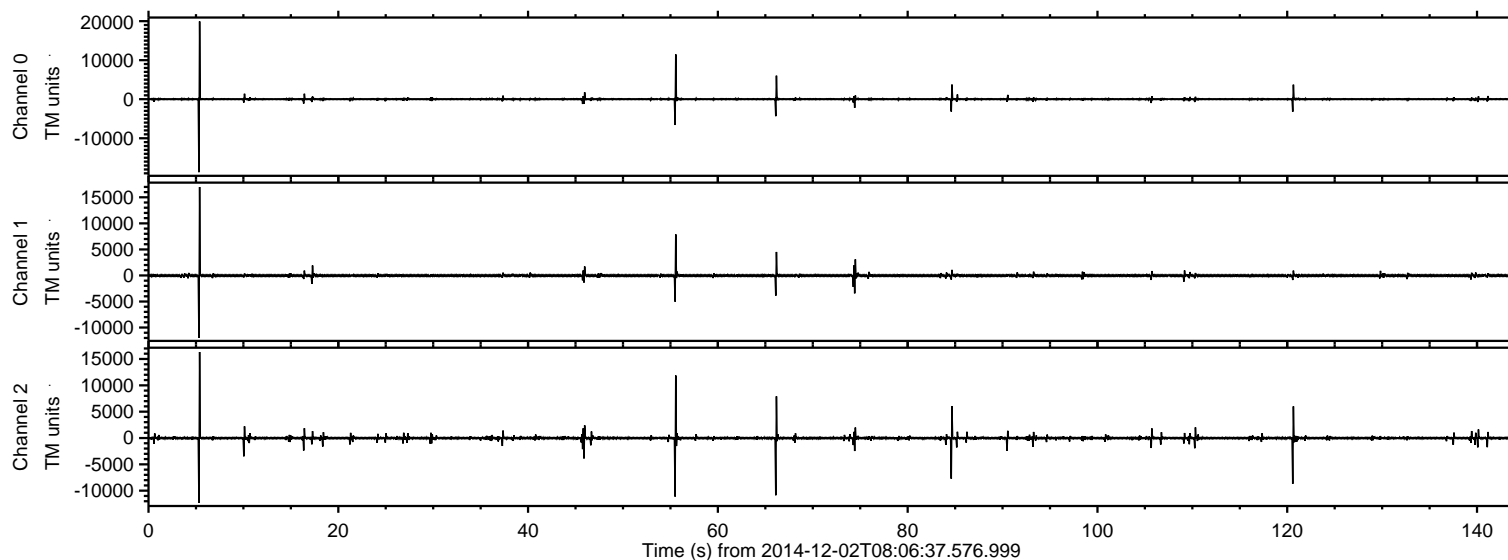


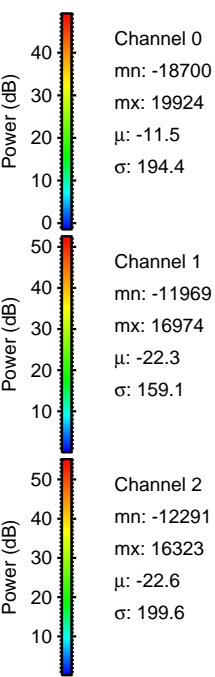
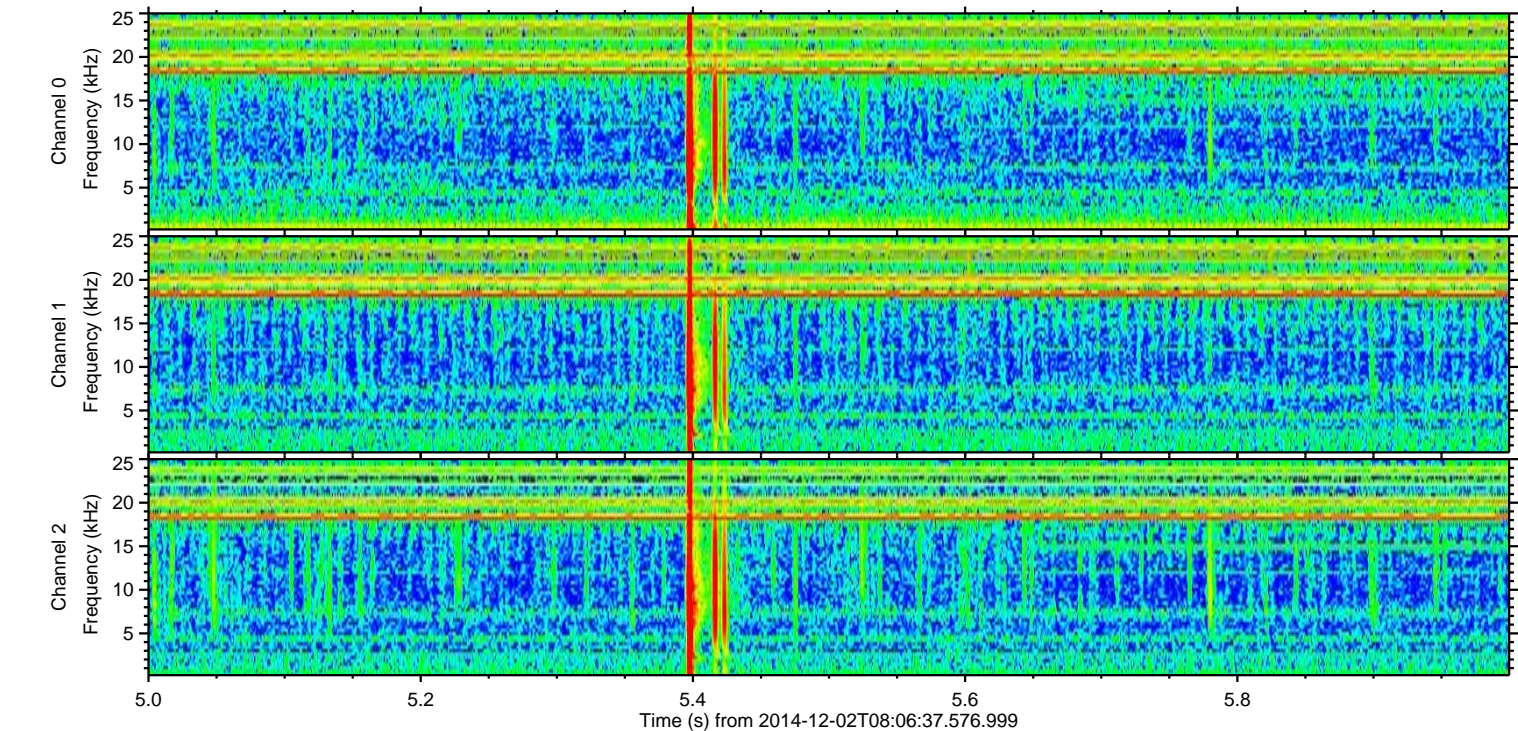
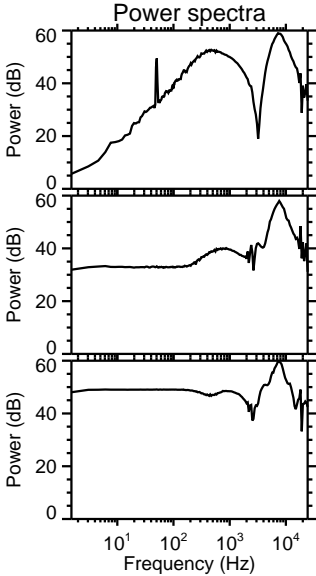
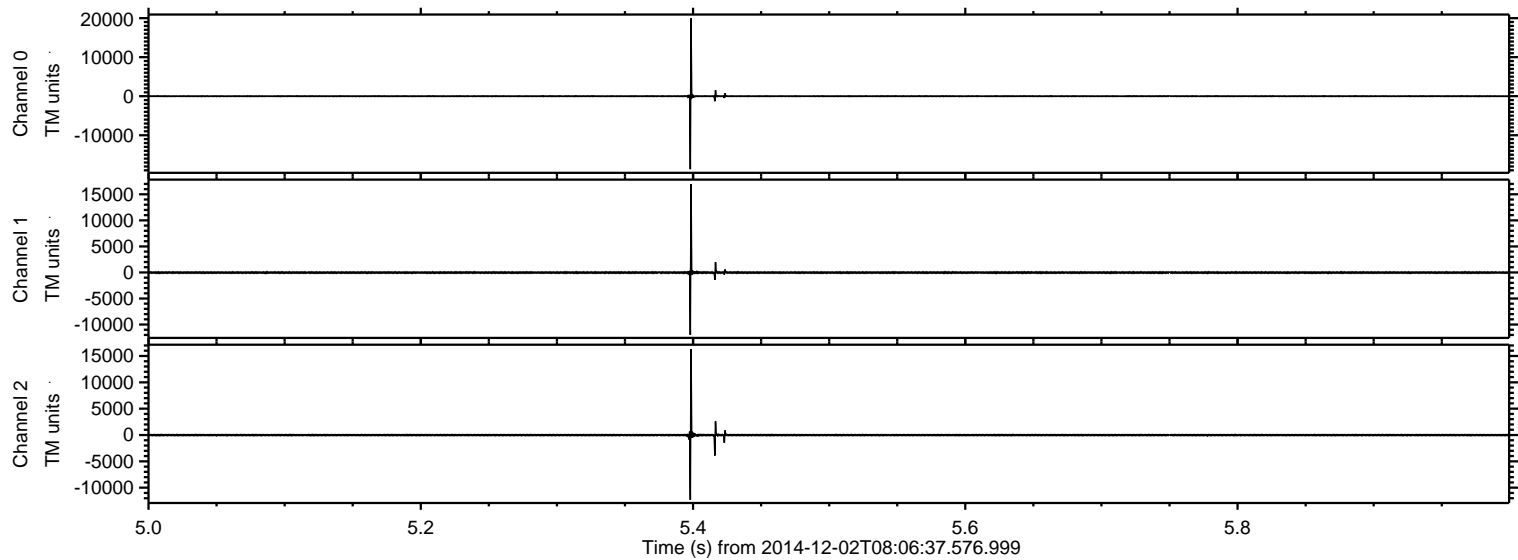
ELMAVAN 3D WAVEFORMS (Measured data sampled at 50 kHz) 49786 packets of 144 samples from 2014-12-02T08:06:37.576.999.

Processed Tue Dec 2 09:13:50 2014 by ELM ver.2012-10-06 from 001__elm20141202_080636__dat00.bin



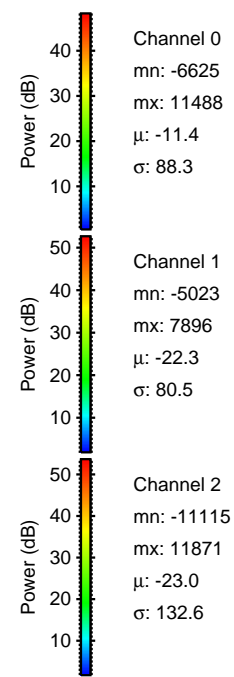
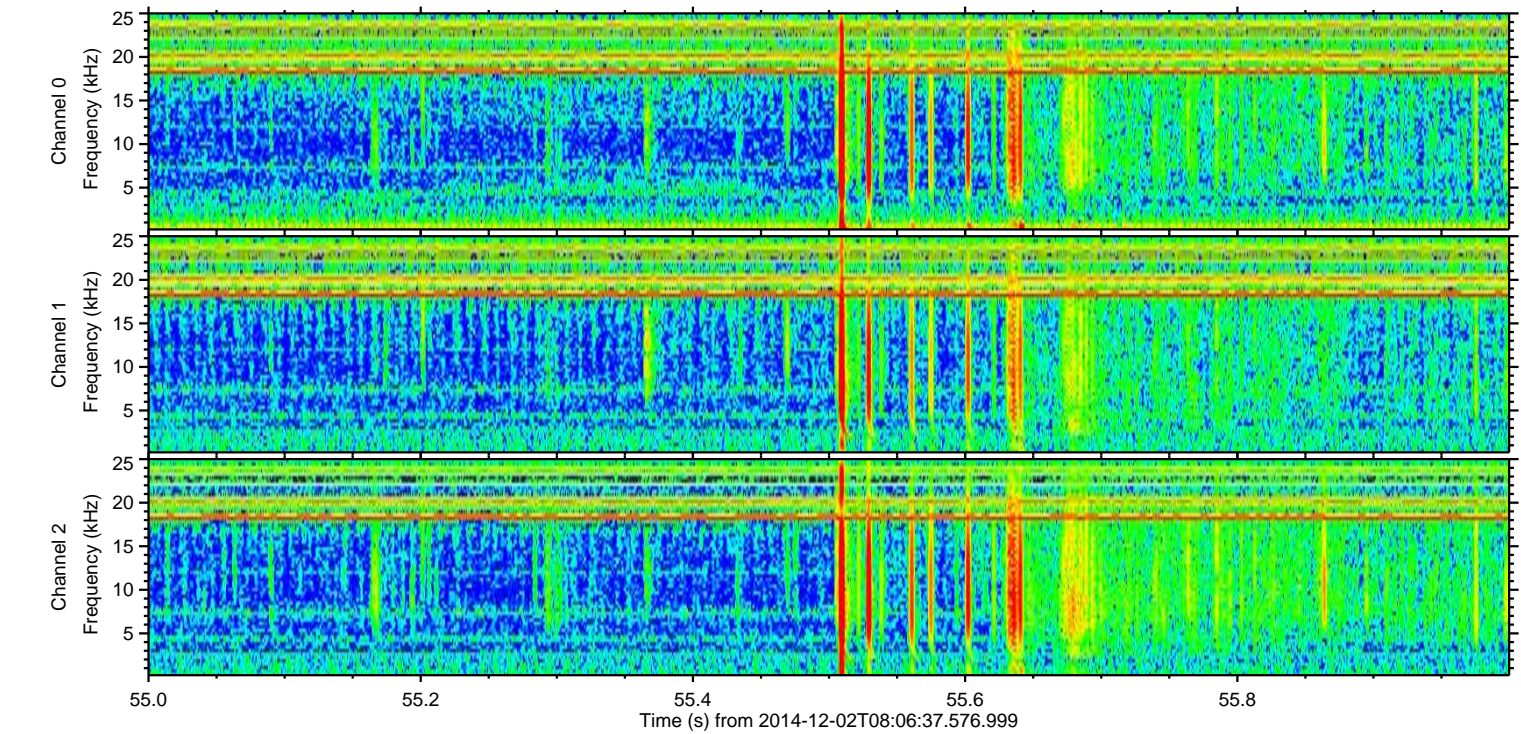
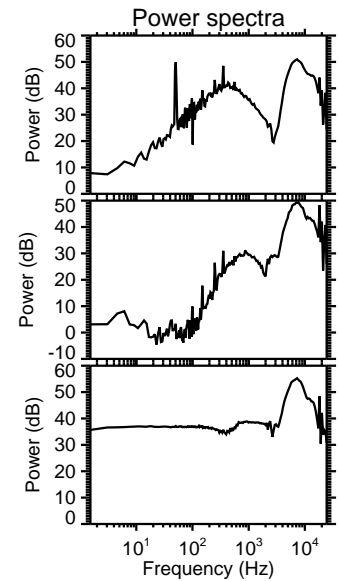
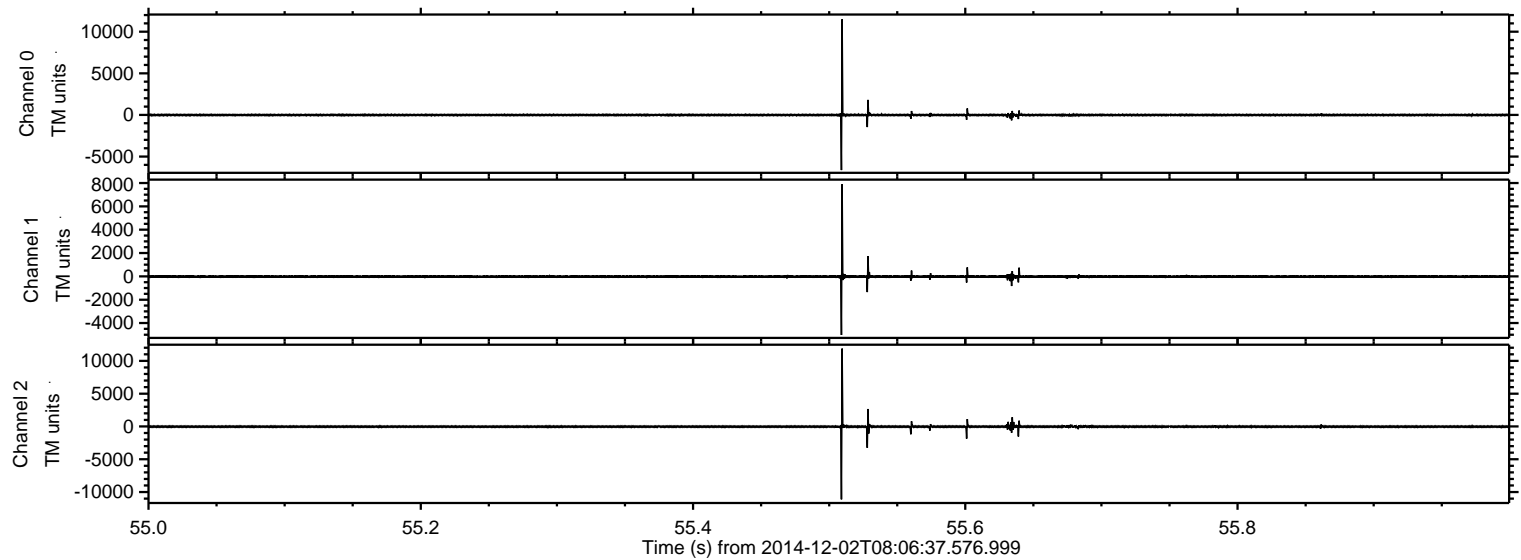
ELMAVAN 3D WAVEFORMS (Measured data sampled at 50 kHz) 49786 packets of 144 samples from 2014-12-02T08:06:37.576.999. Part 6/144

Processed Tue Dec 2 09:14:01 2014 by ELM ver.2012-10-06 from 001__elm20141202_080636__dat00.bin

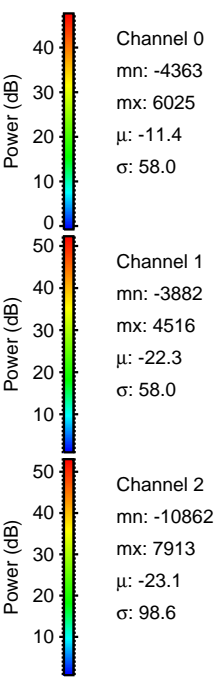
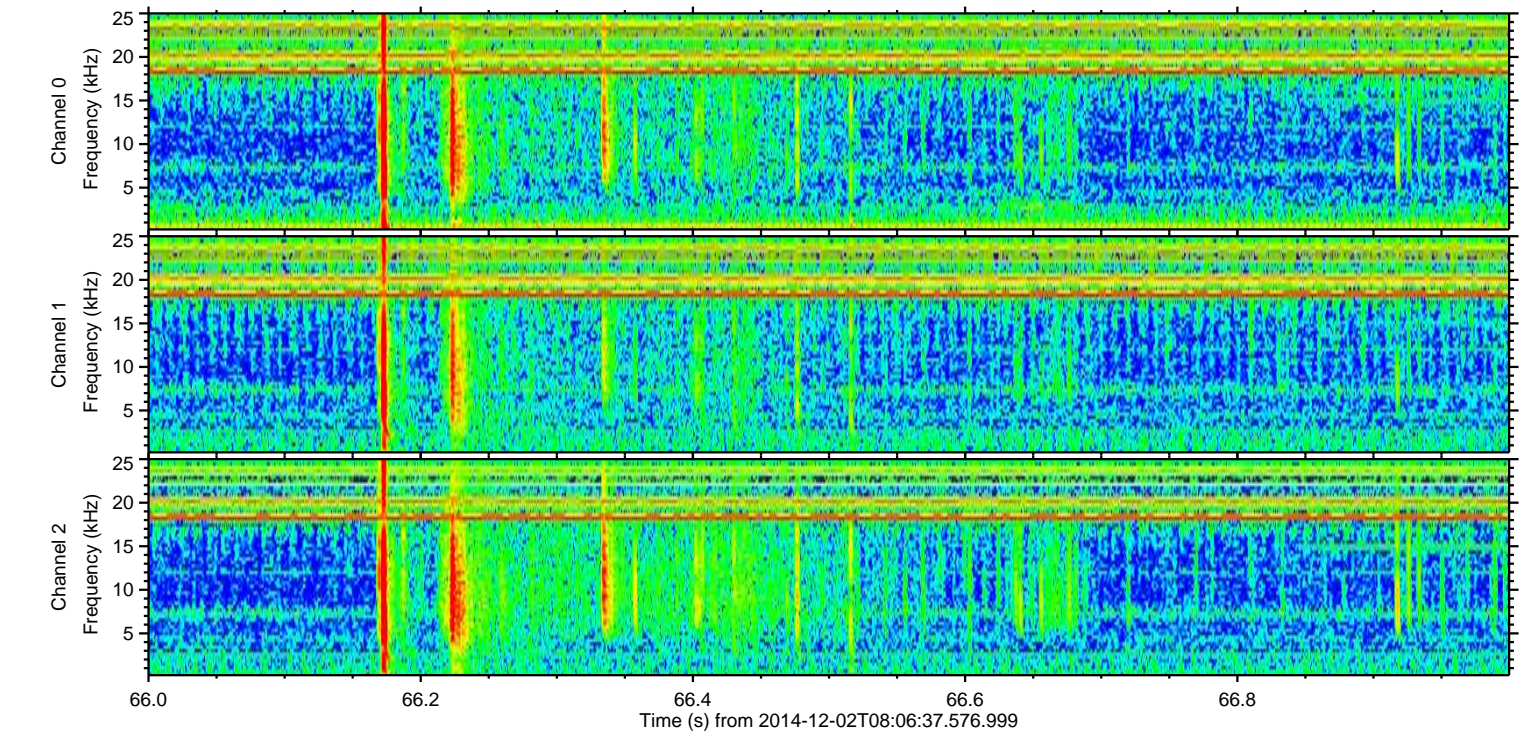
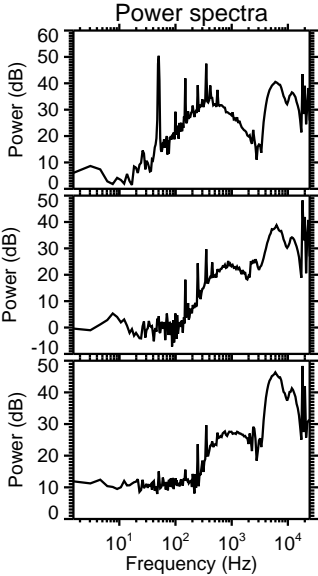
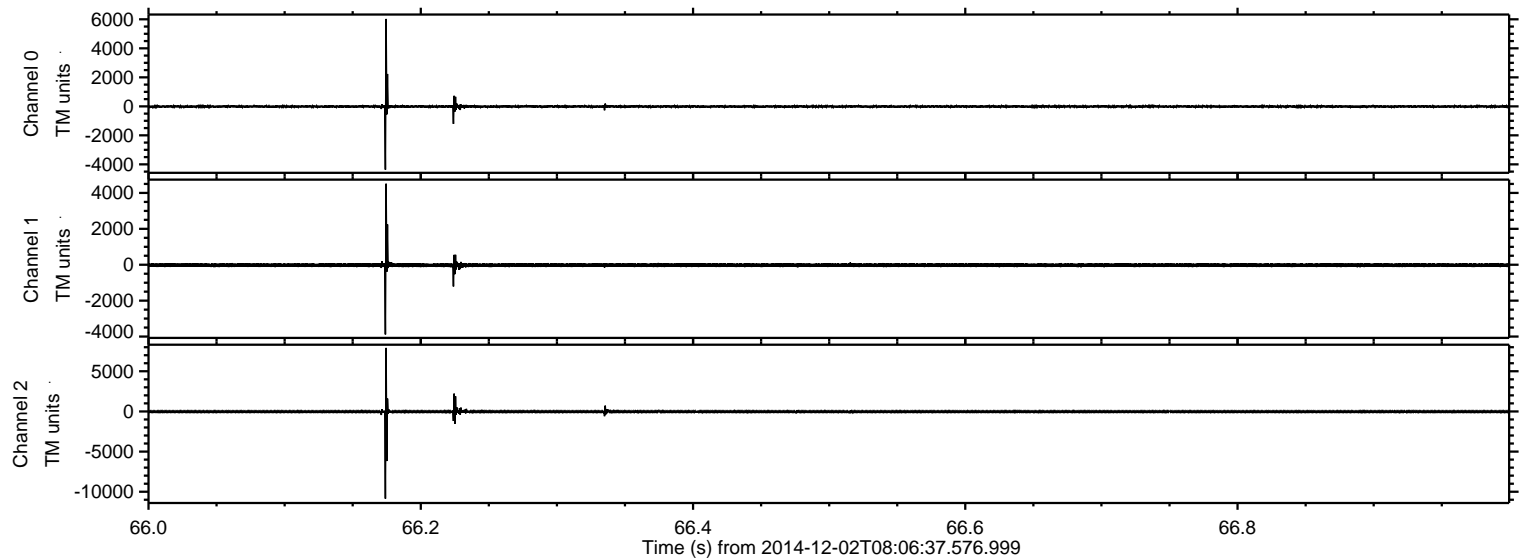


ELMAVAN 3D WAVEFORMS (Measured data sampled at 50 kHz) 49786 packets of 144 samples from 2014-12-02T08:06:37.576.999. Part 56/144

Processed Tue Dec 2 09:14:02 2014 by ELM ver.2012-10-06 from 001__elm20141202_080636__dat00.bin

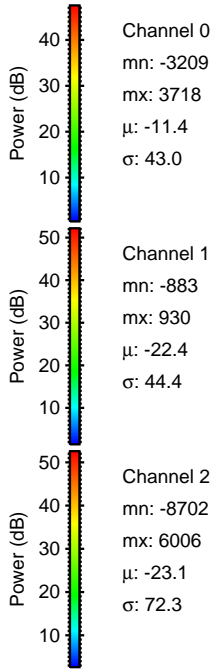
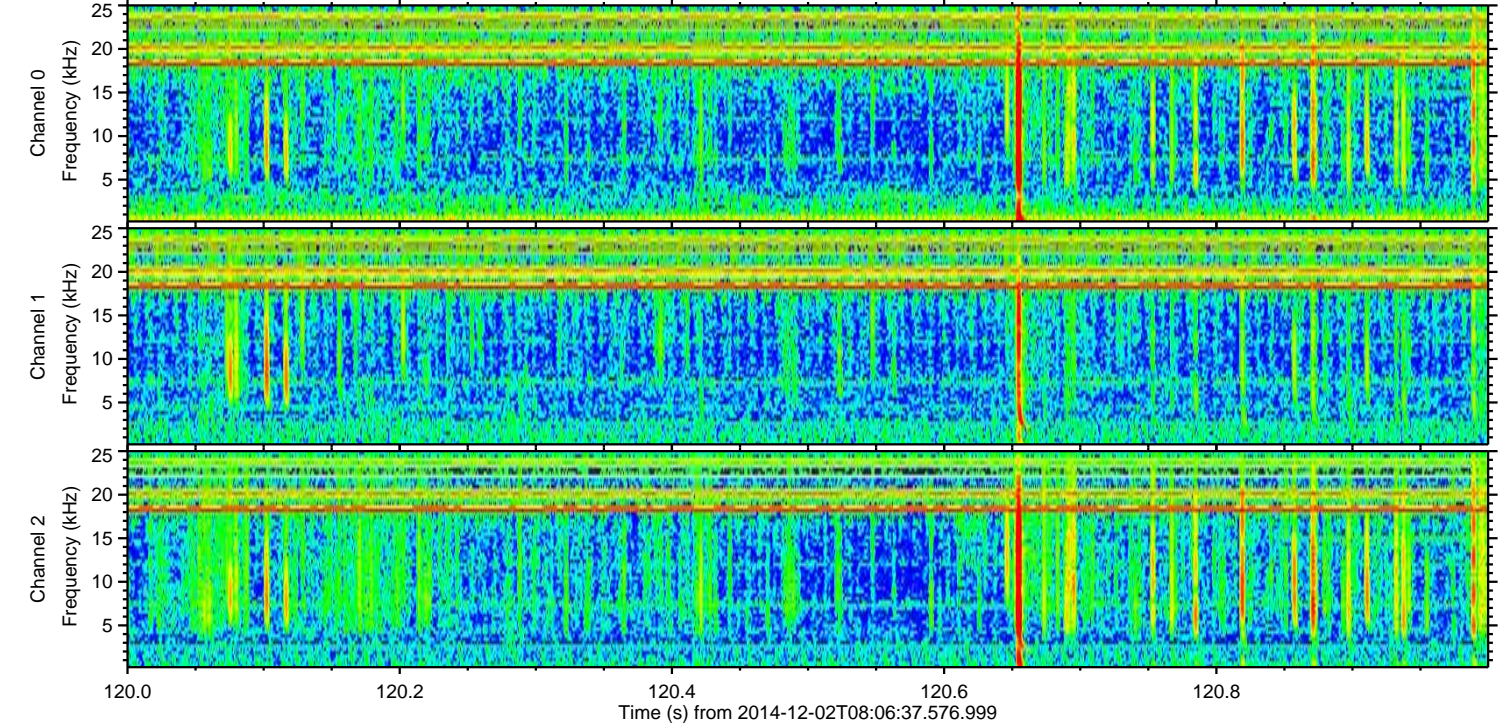
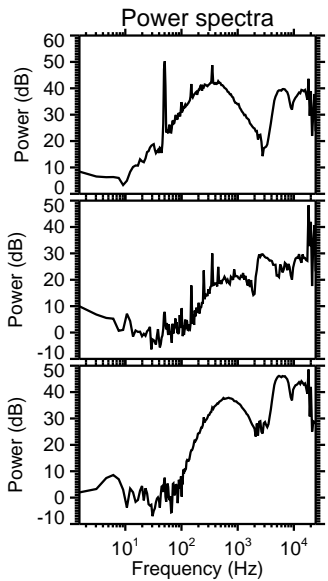
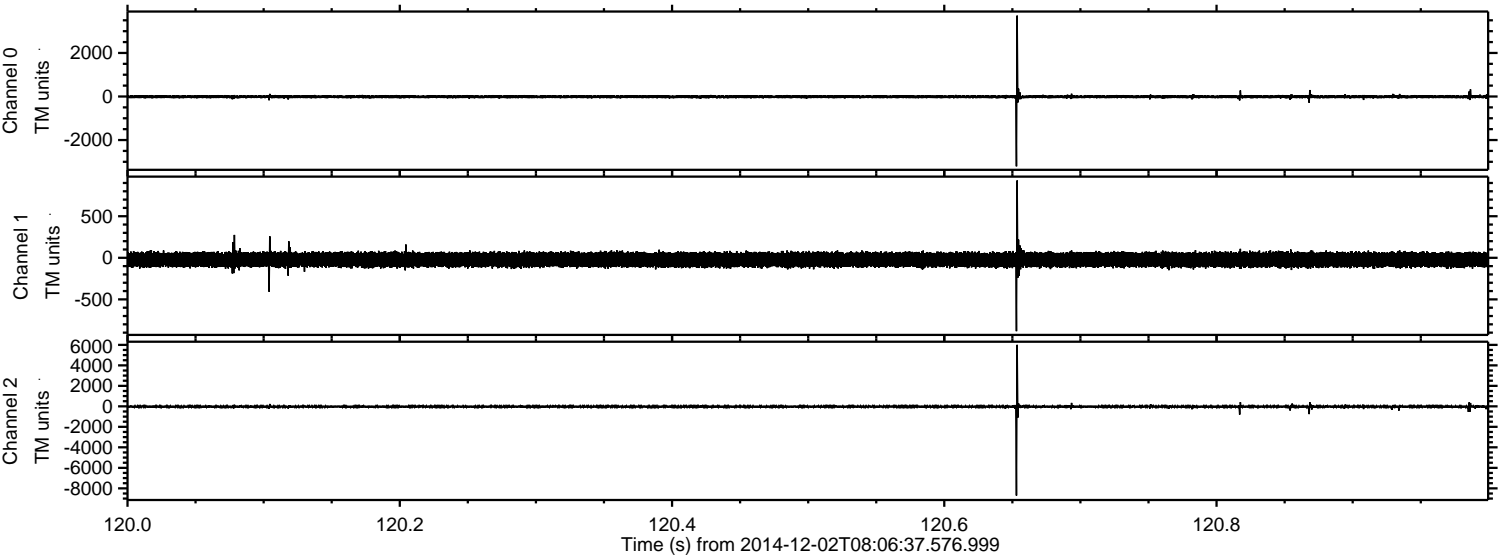


Processed Tue Dec 2 09:14:03 2014 by ELM ver.2012-10-06 from 001__elm20141202_080636__dat00.bin



ELMAVAN 3D WAVEFORMS (Measured data sampled at 50 kHz) 49786 packets of 144 samples from 2014-12-02T08:06:37.576.999. Part 121/144

Processed Tue Dec 2 09:14:04 2014 by ELM ver.2012-10-06 from 001__elm20141202_080636__dat00.bin

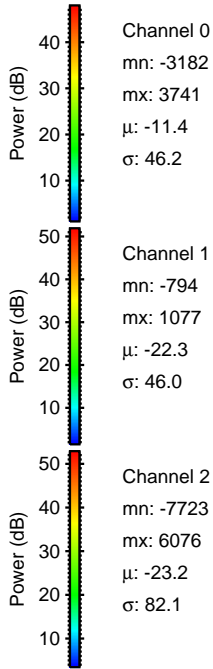
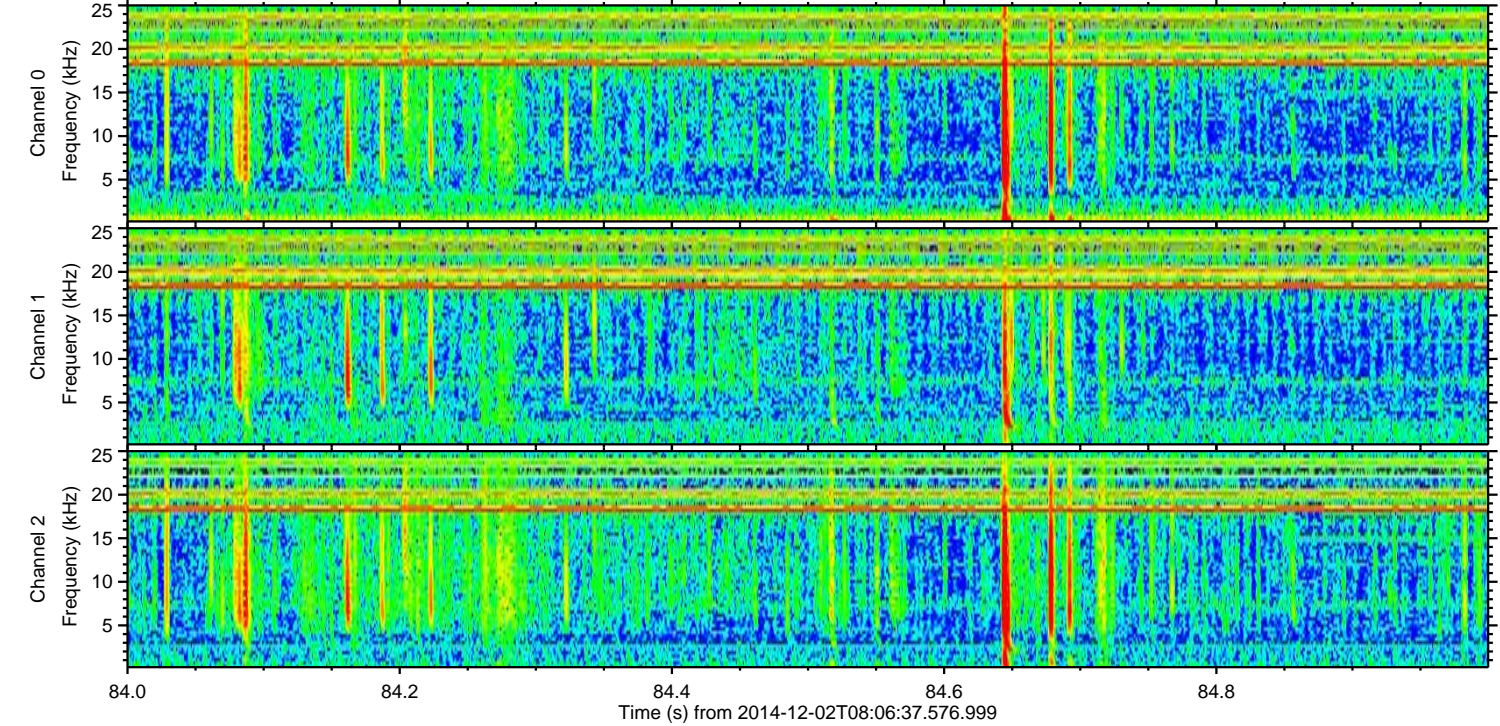
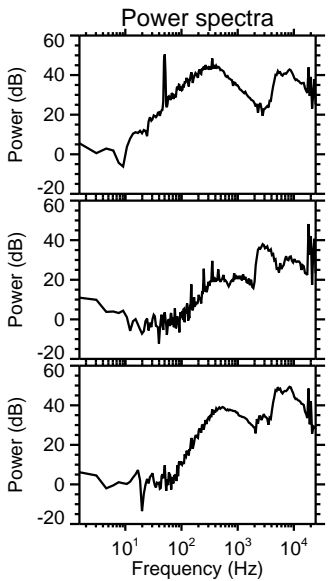
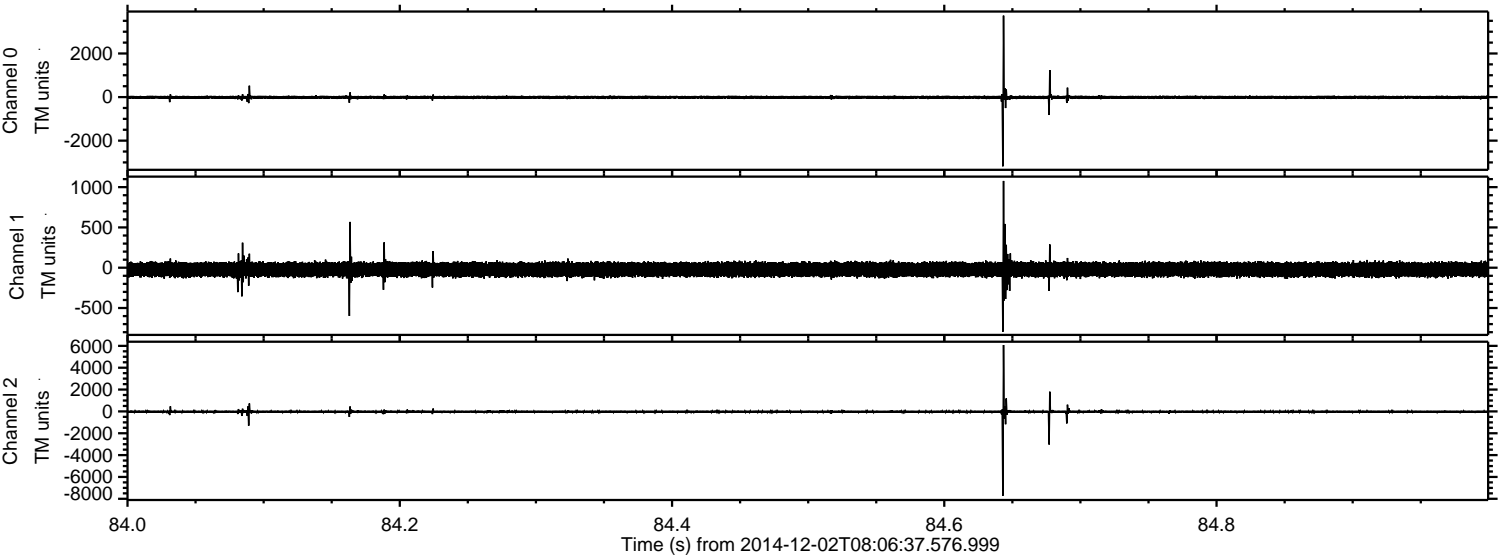


Channel 0
mn: -3209
mx: 3718
 μ : -11.4
 σ : 43.0

Channel 1
mn: -883
mx: 930
 μ : -22.4
 σ : 44.4

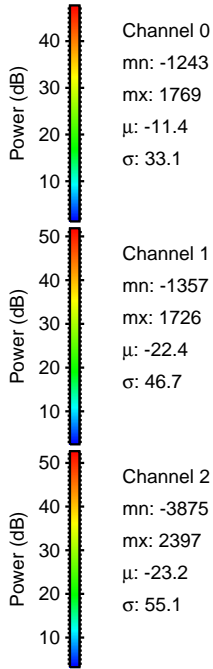
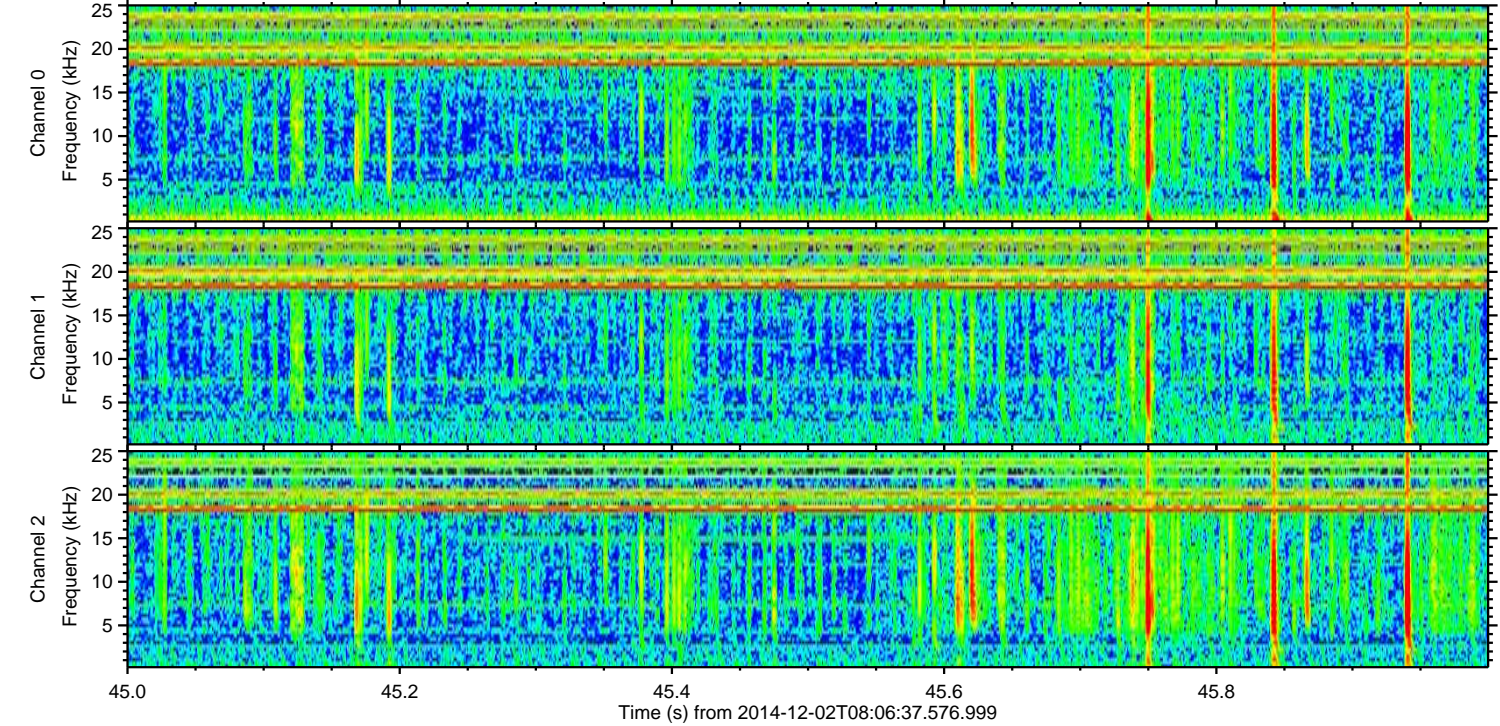
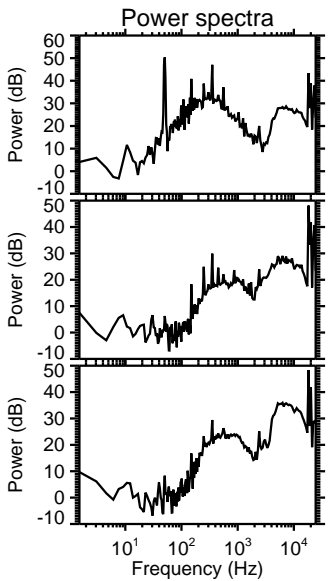
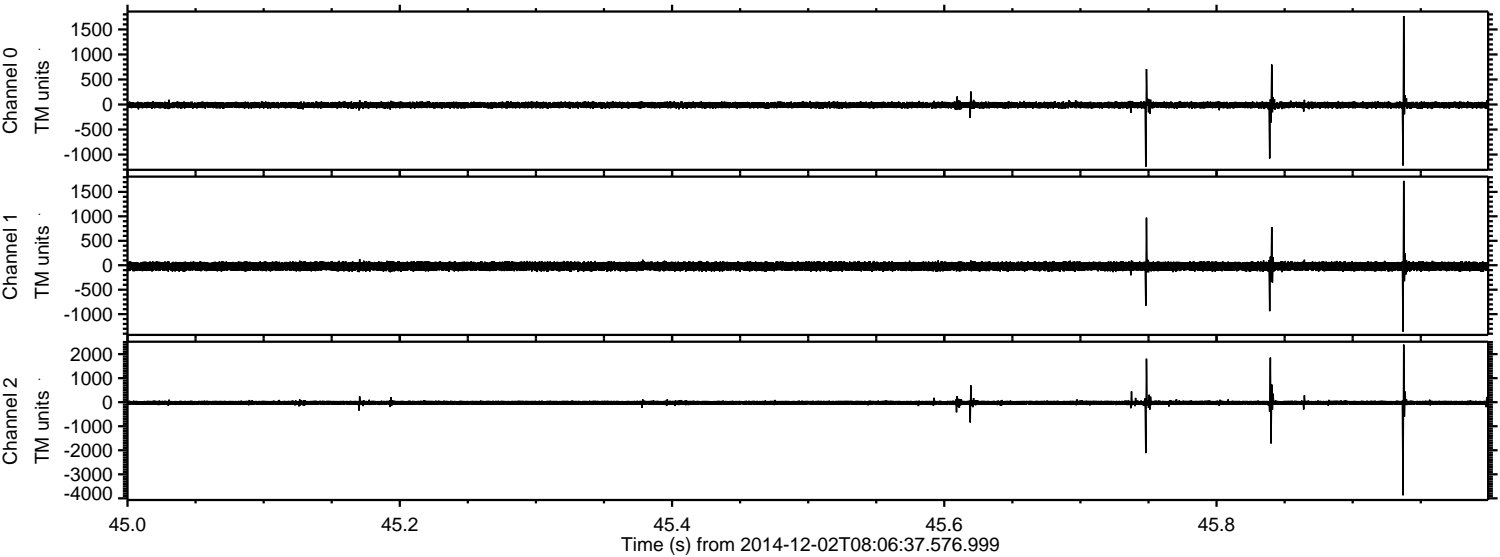
Channel 2
mn: -8702
mx: 6006
 μ : -23.1
 σ : 72.3

Processed Tue Dec 2 09:14:05 2014 by ELM ver.2012-10-06 from 001__elm20141202_080636__dat00.bin

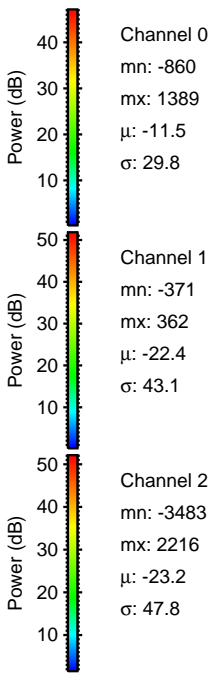
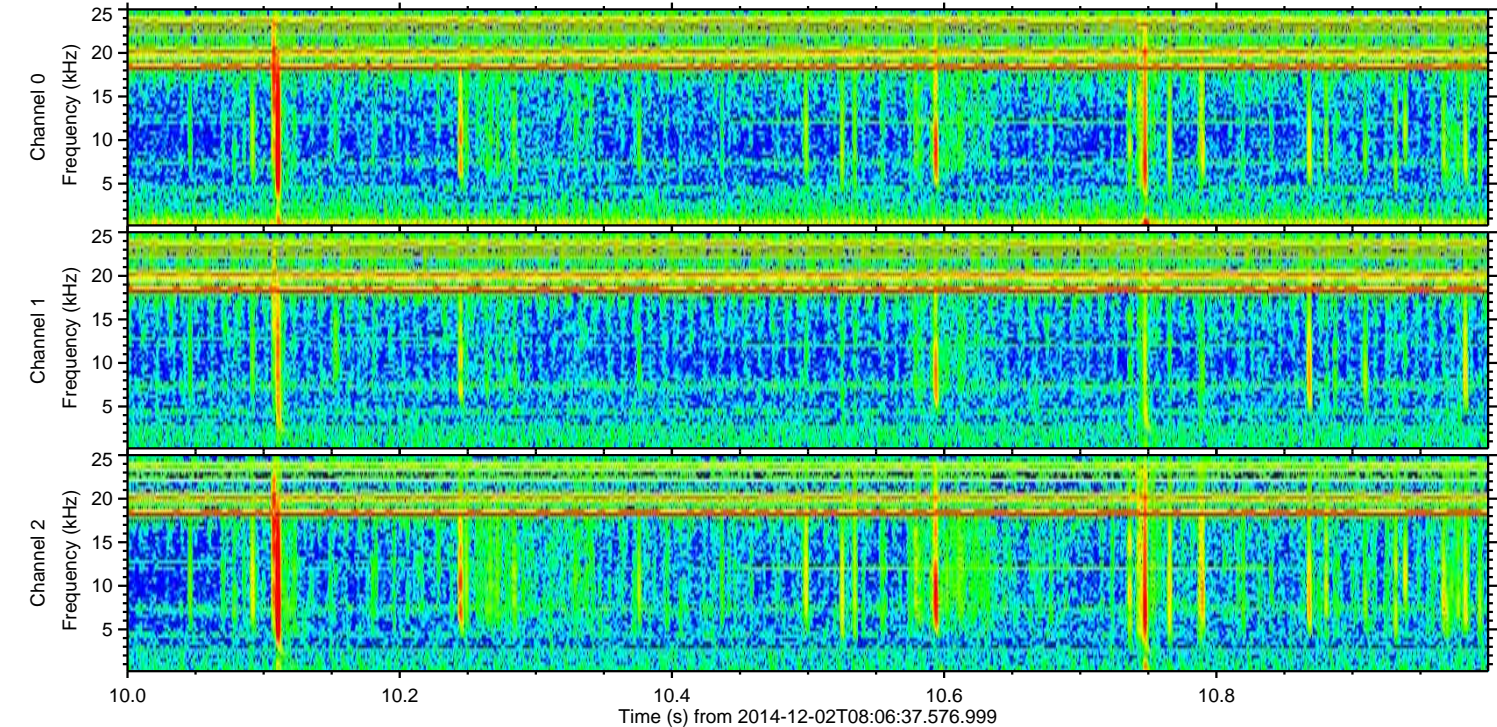
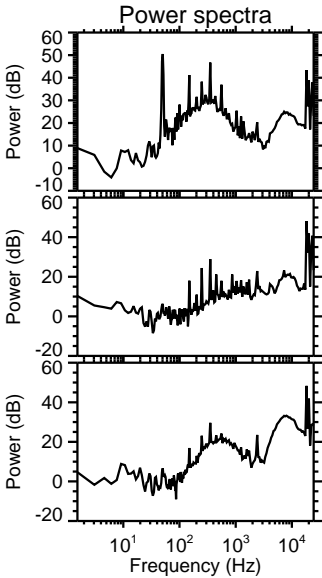
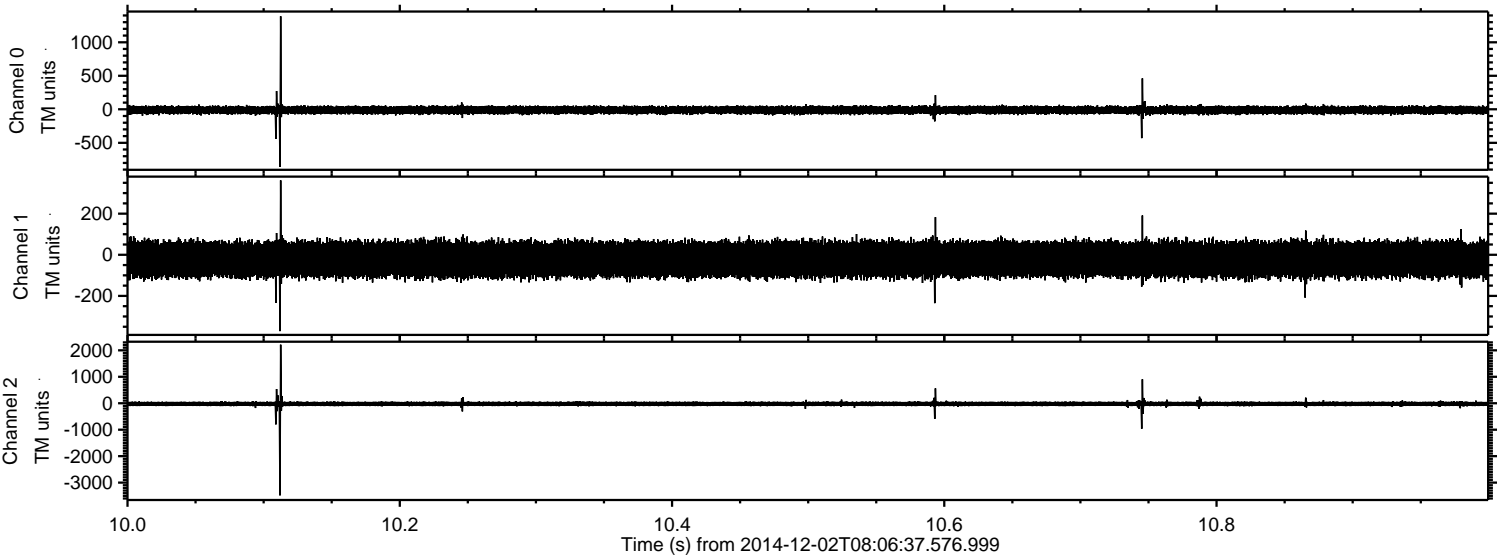


ELMAVAN 3D WAVEFORMS (Measured data sampled at 50 kHz) 49786 packets of 144 samples from 2014-12-02T08:06:37.576.999. Part 46/144

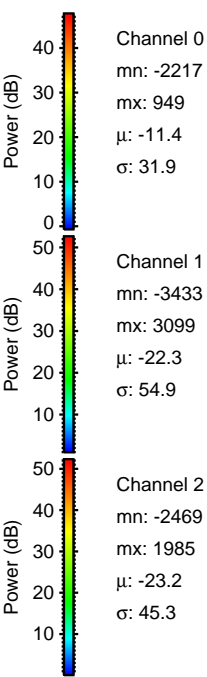
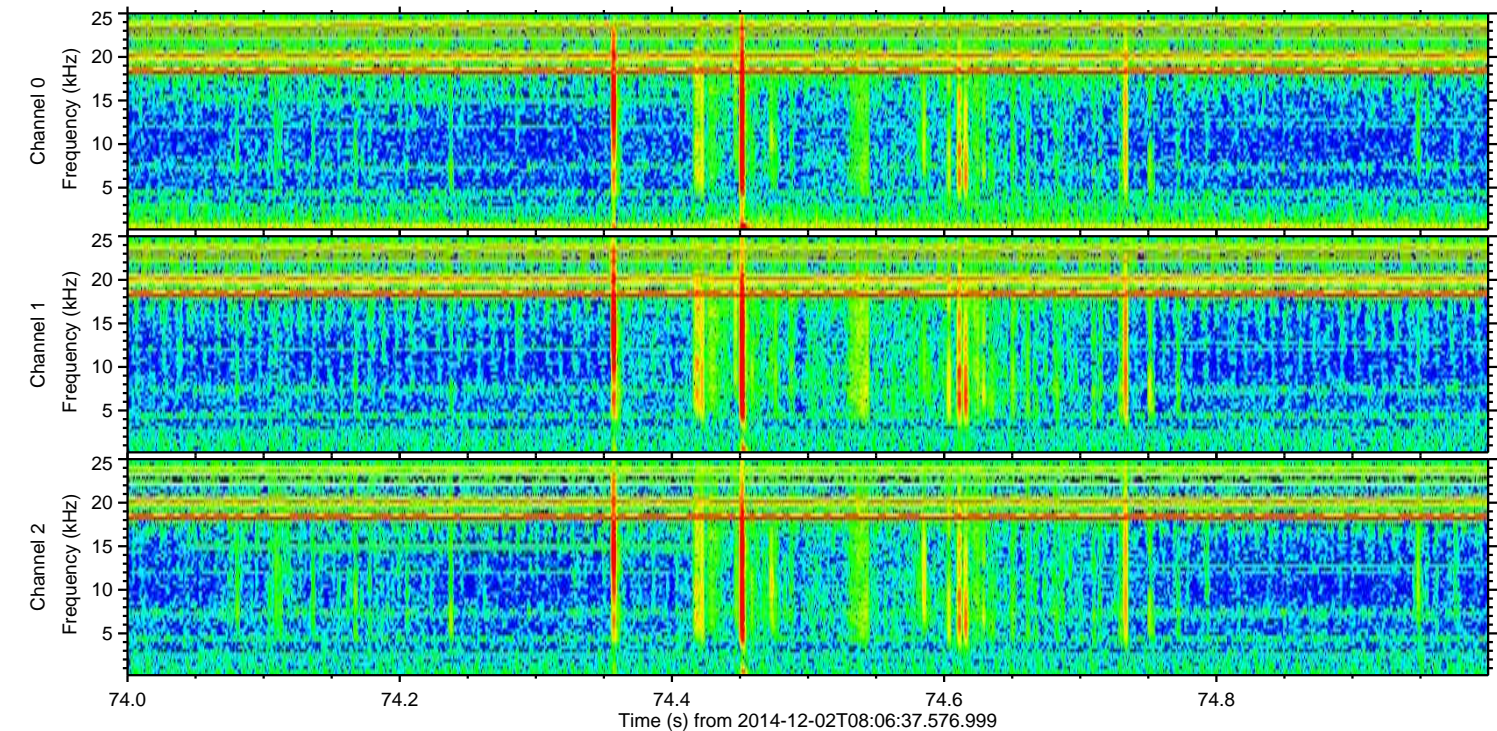
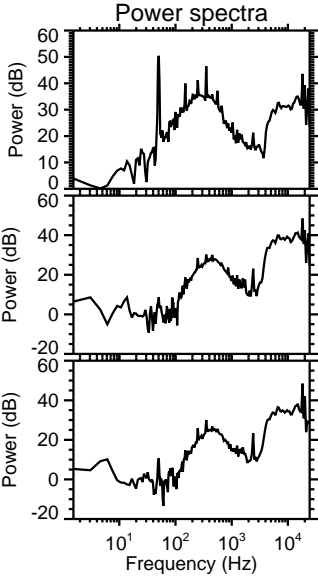
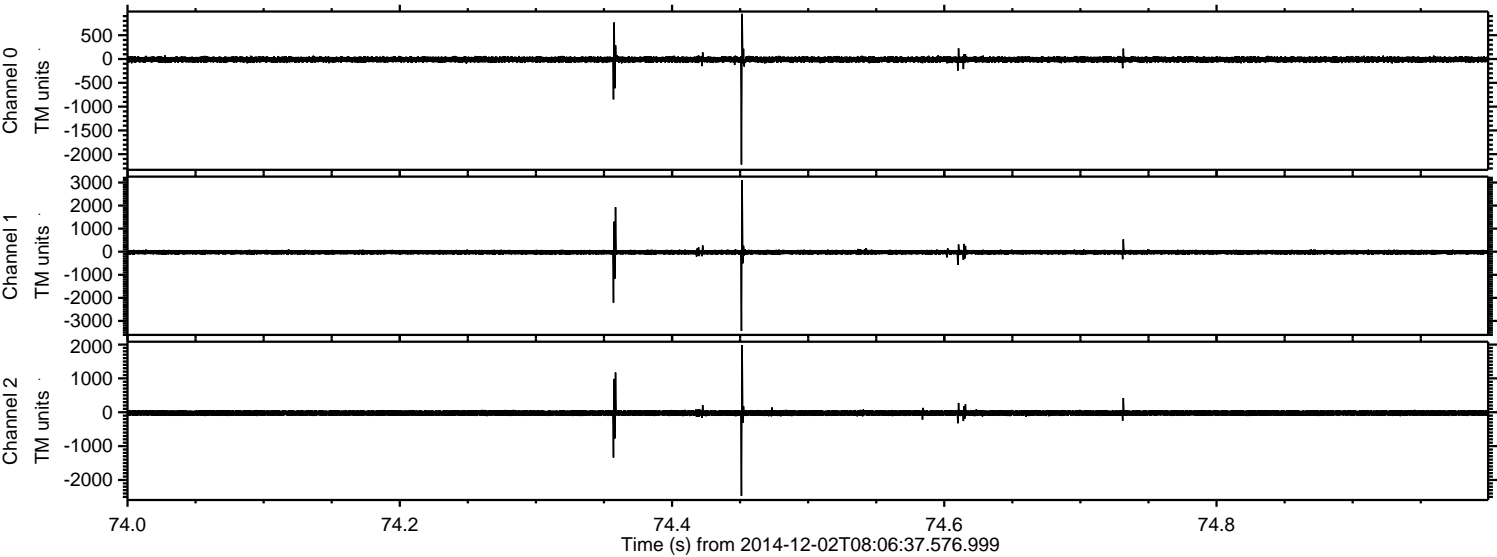
Processed Tue Dec 2 09:14:06 2014 by ELM ver.2012-10-06 from 001__elm20141202_080636__dat00.bin



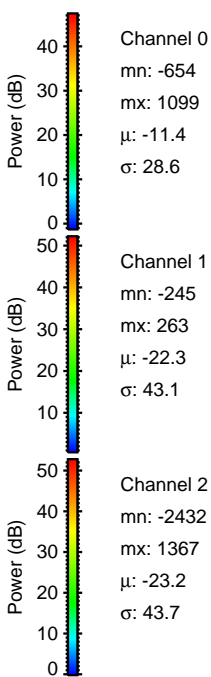
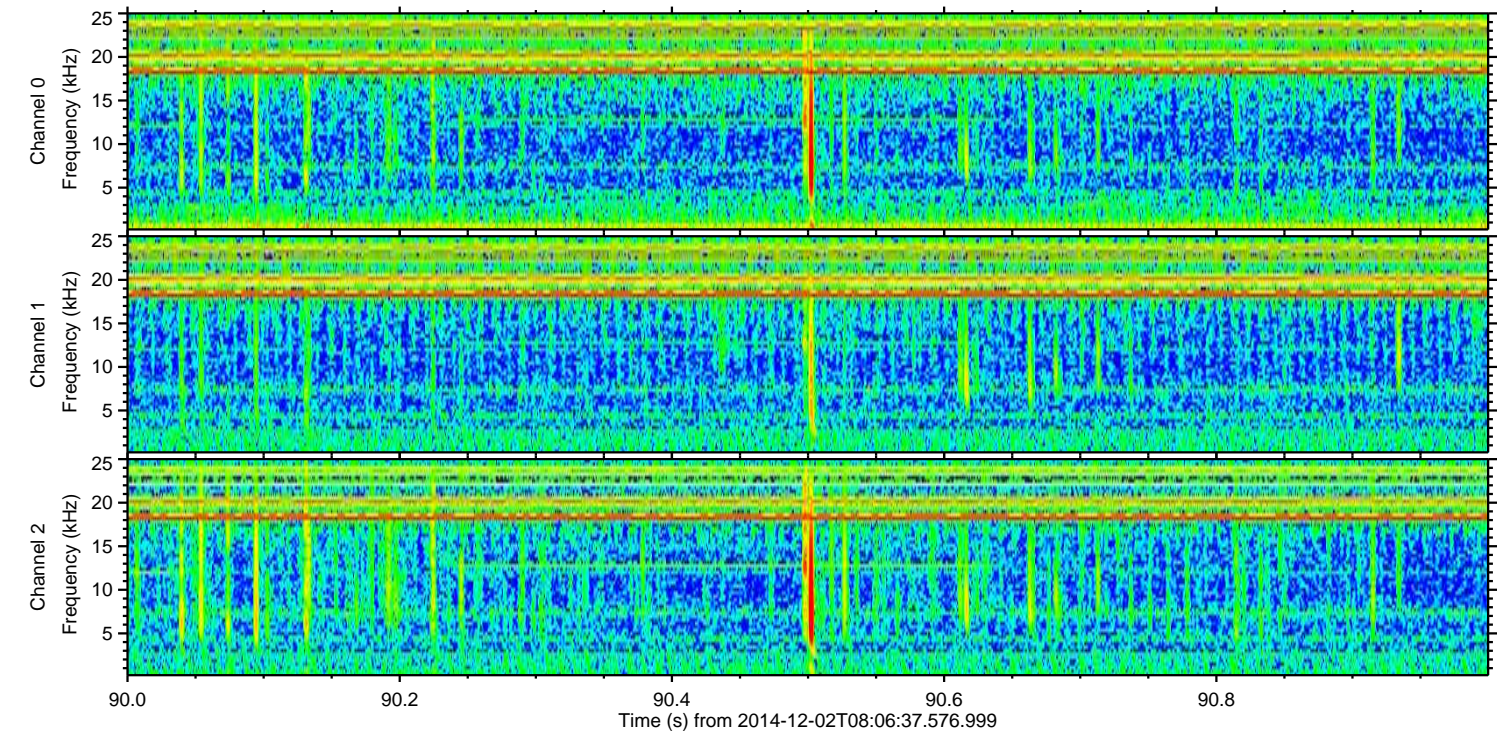
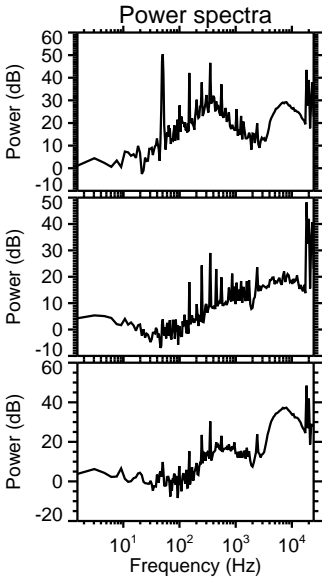
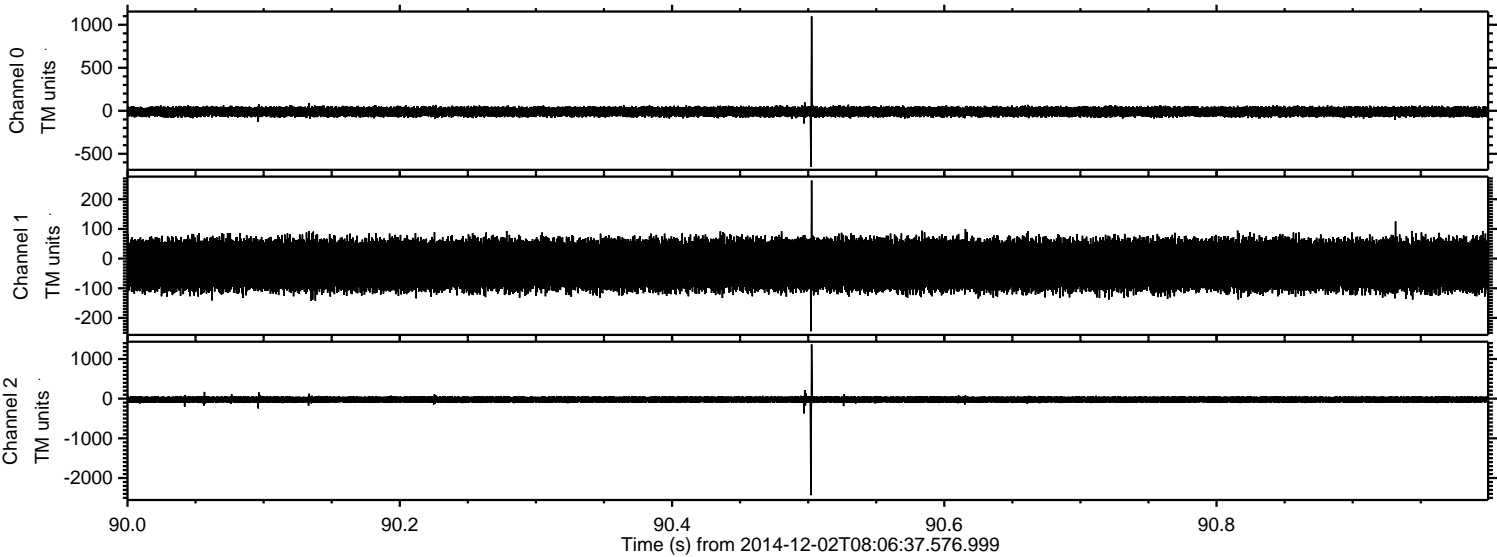
Processed Tue Dec 2 09:14:07 2014 by ELM ver.2012-10-06 from 001__elm20141202_080636__dat00.bin



Processed Tue Dec 2 09:14:08 2014 by ELM ver.2012-10-06 from 001__elm20141202_080636__dat00.bin



Processed Tue Dec 2 09:14:09 2014 by ELM ver.2012-10-06 from 001__elm20141202_080636__dat00.bin



Processed Tue Dec 2 09:14:10 2014 by ELM ver.2012-10-06 from 001__elm20141202_080636__dat00.bin

