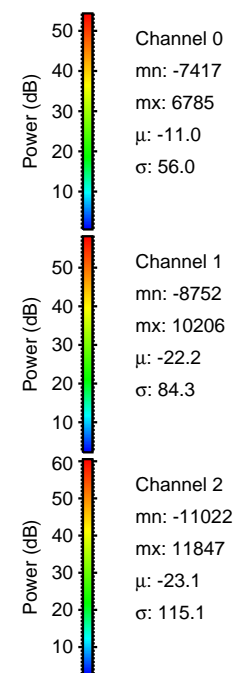
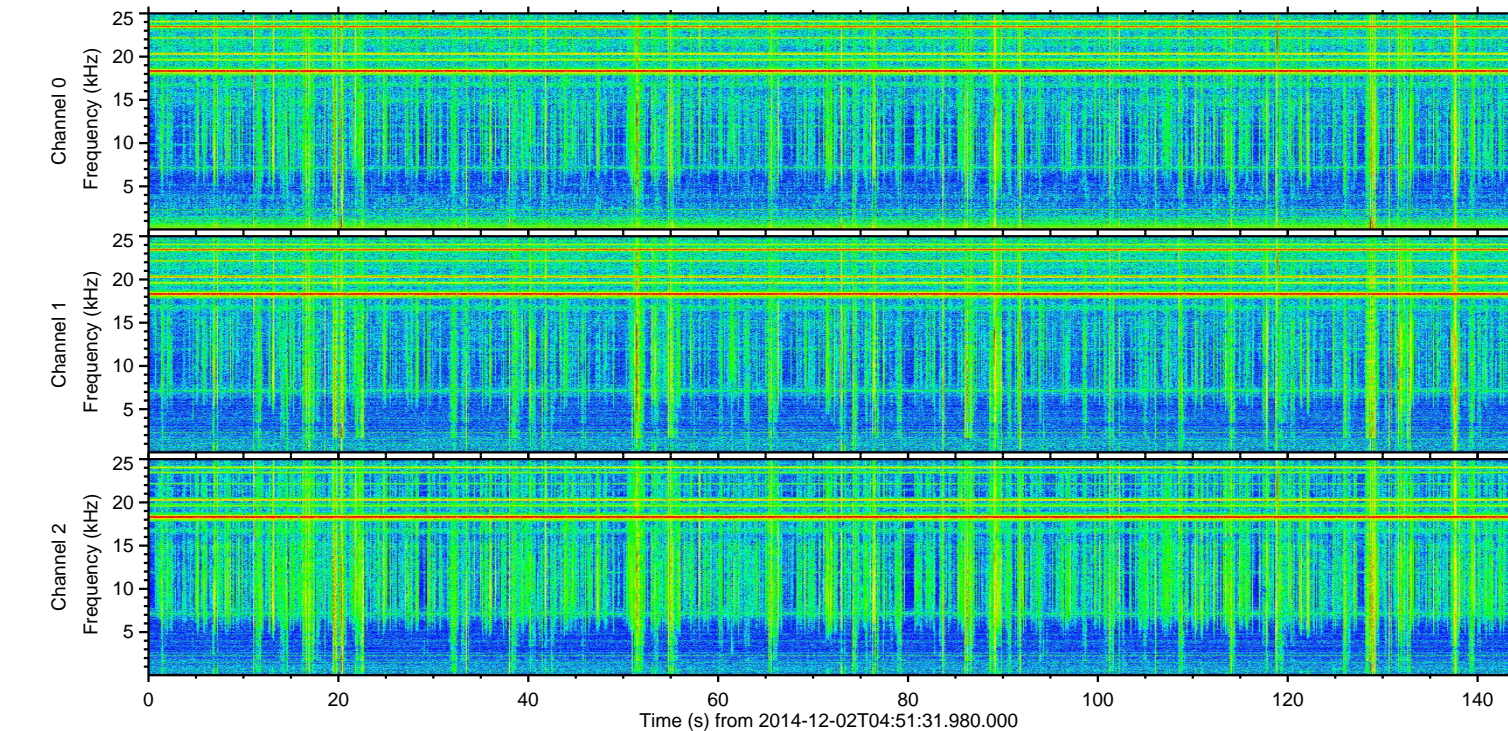
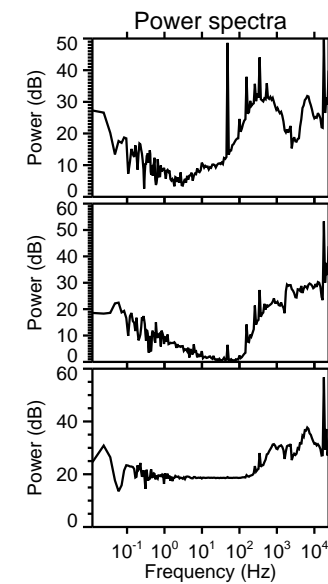
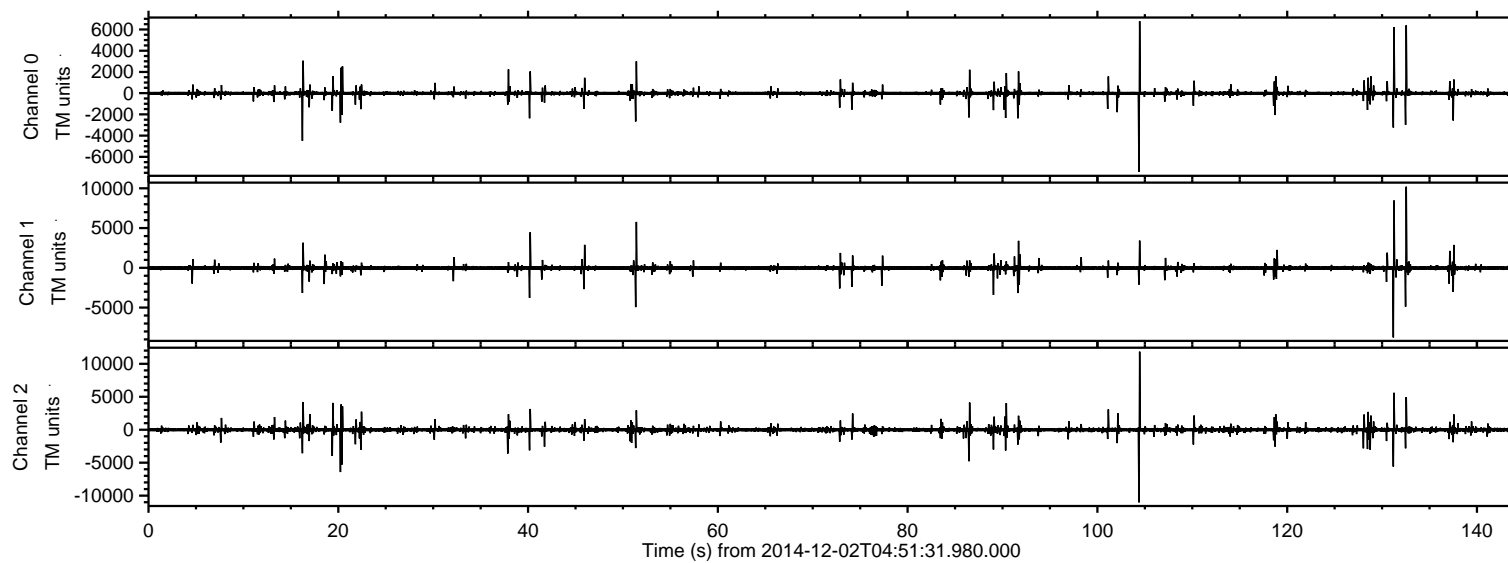


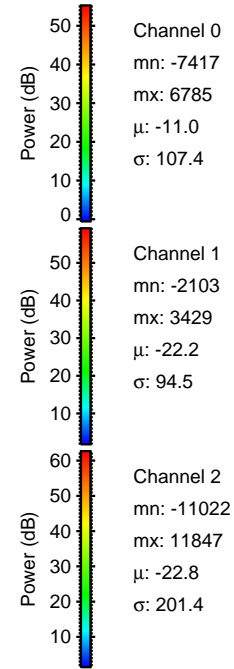
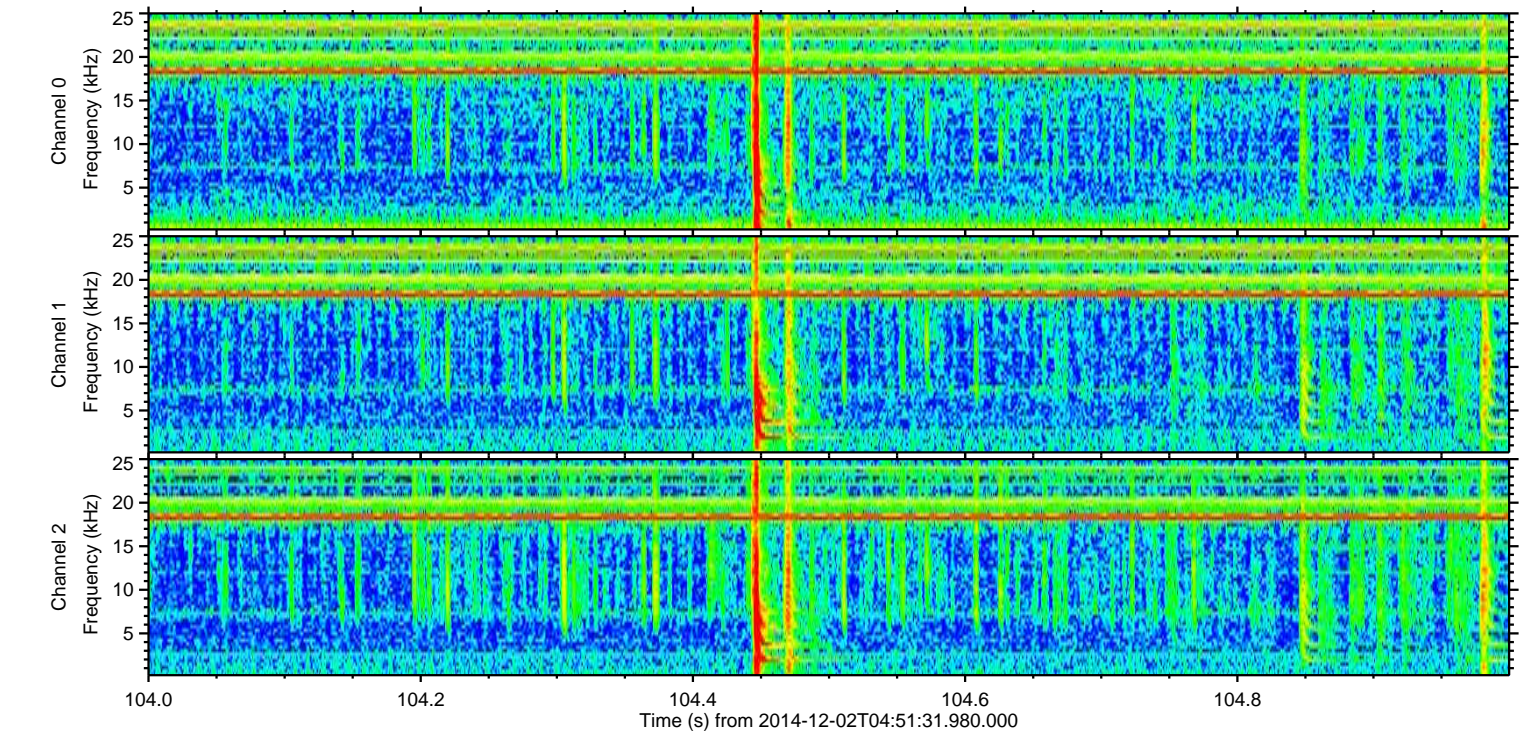
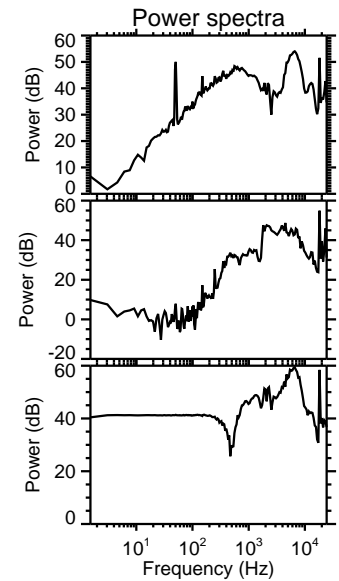
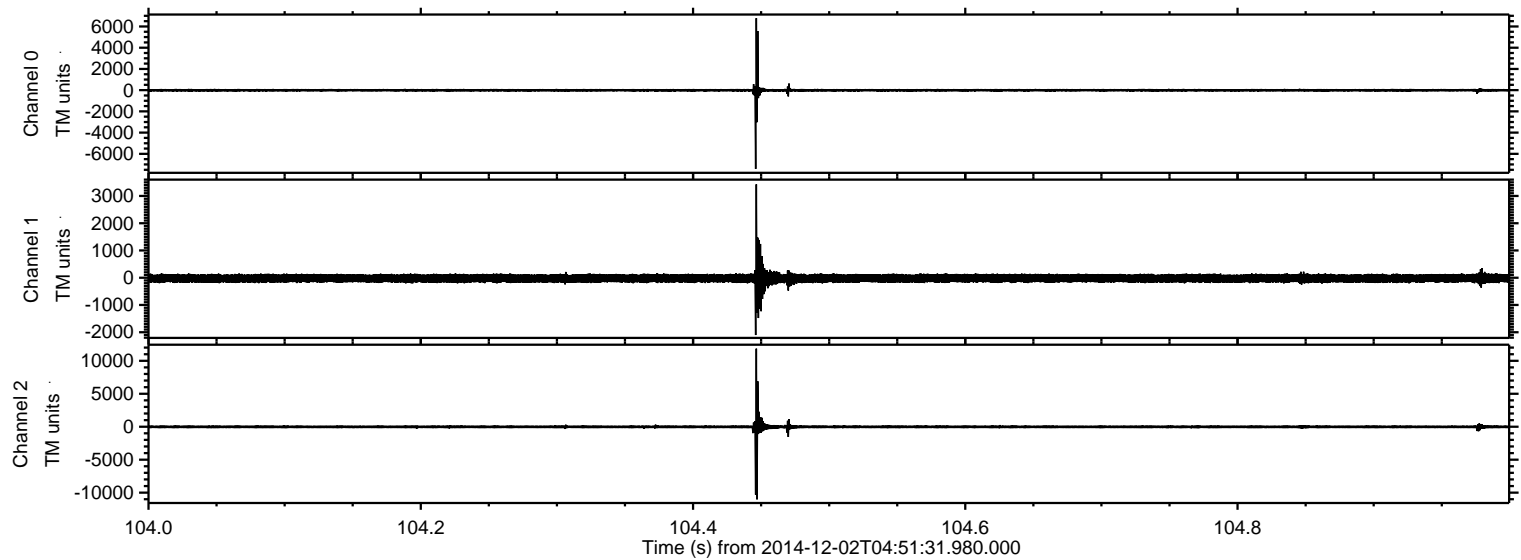
ELMAVAN 3D WAVEFORMS (Measured data sampled at 50 kHz) 49789 packets of 144 samples from 2014-12-02T04:51:31.980.000.

Processed Tue Dec 2 05:59:52 2014 by ELM ver.2012-10-06 from 001__elm20141202_045130__dat00.bin



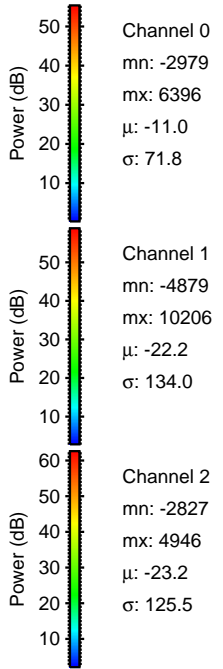
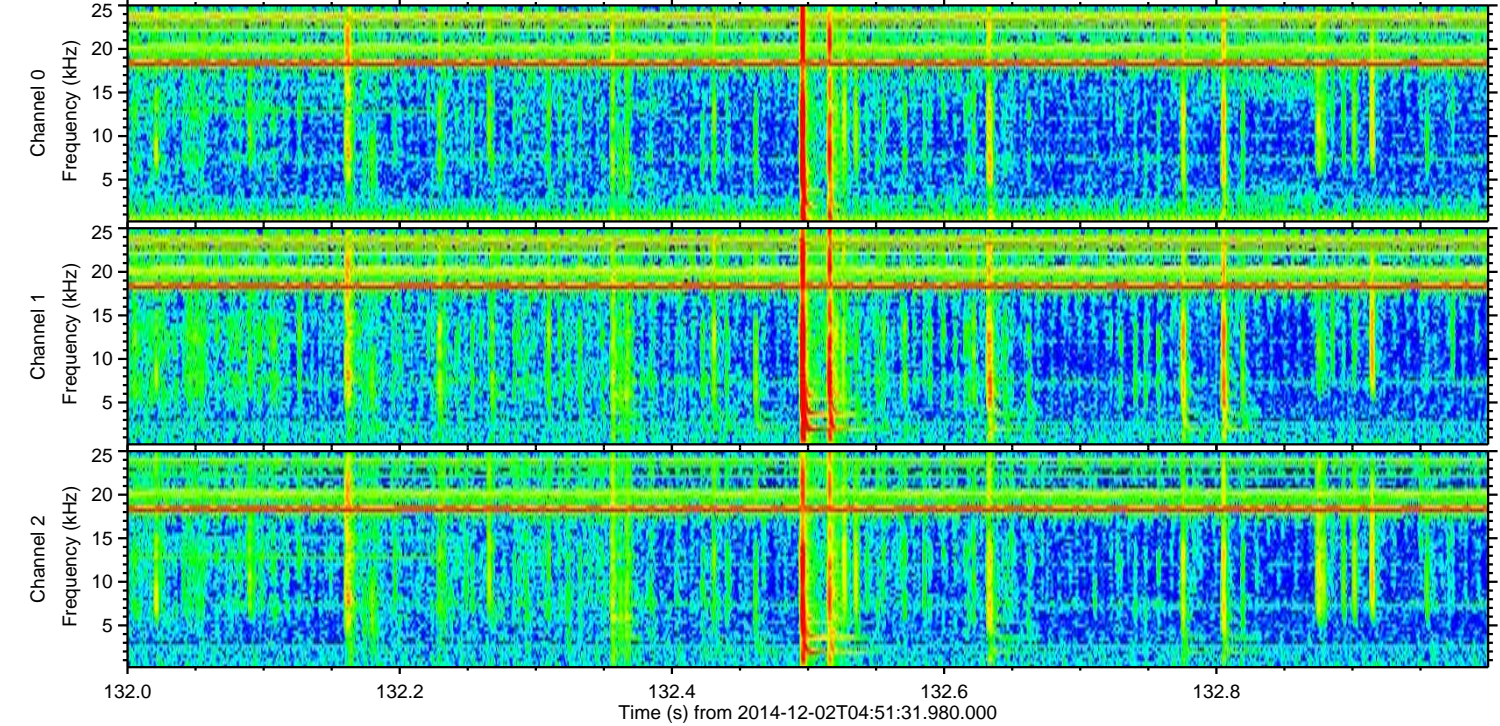
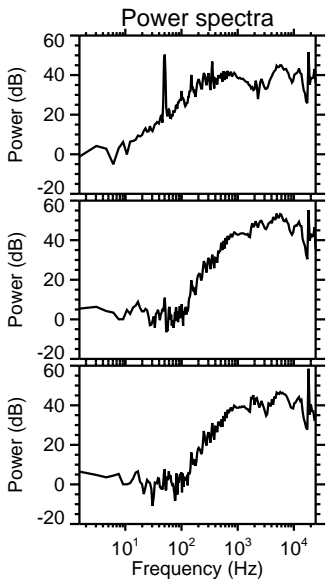
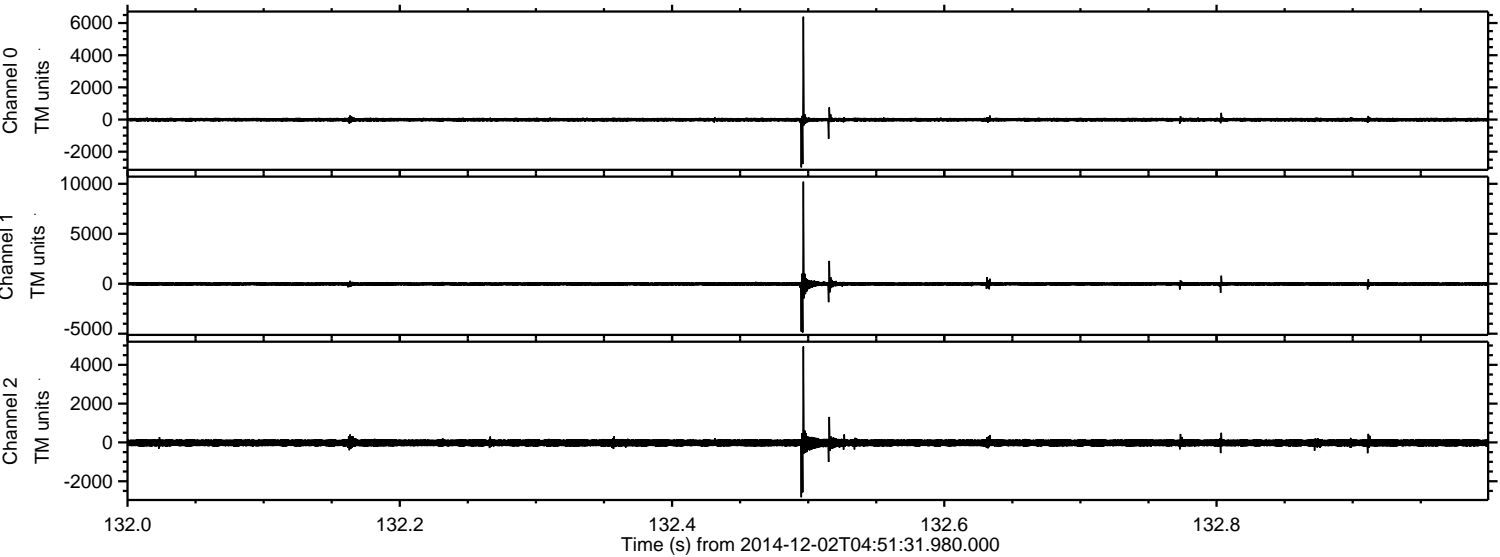
ELMAVAN 3D WAVEFORMS (Measured data sampled at 50 kHz) 49789 packets of 144 samples from 2014-12-02T04:51:31.980.000. Part 105/144

Processed Tue Dec 2 06:00:04 2014 by ELM ver.2012-10-06 from 001__elm20141202_045130__dat00.bin

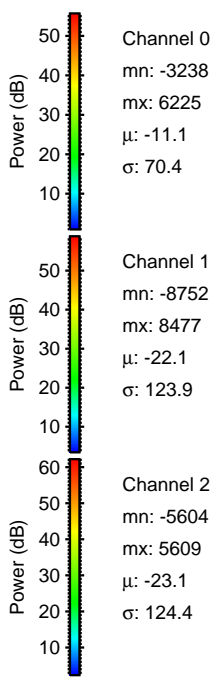
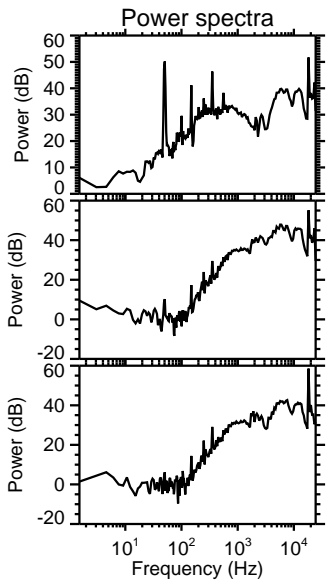
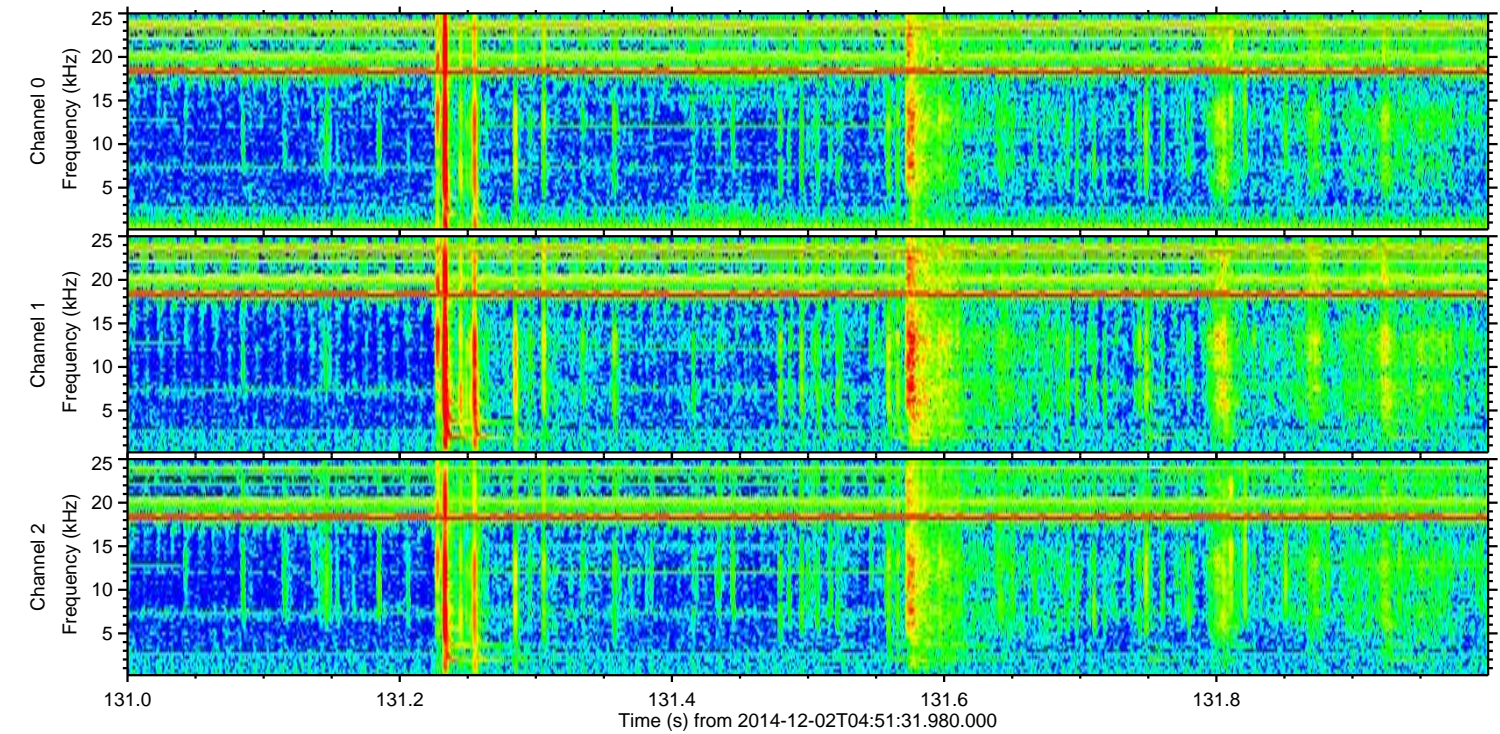
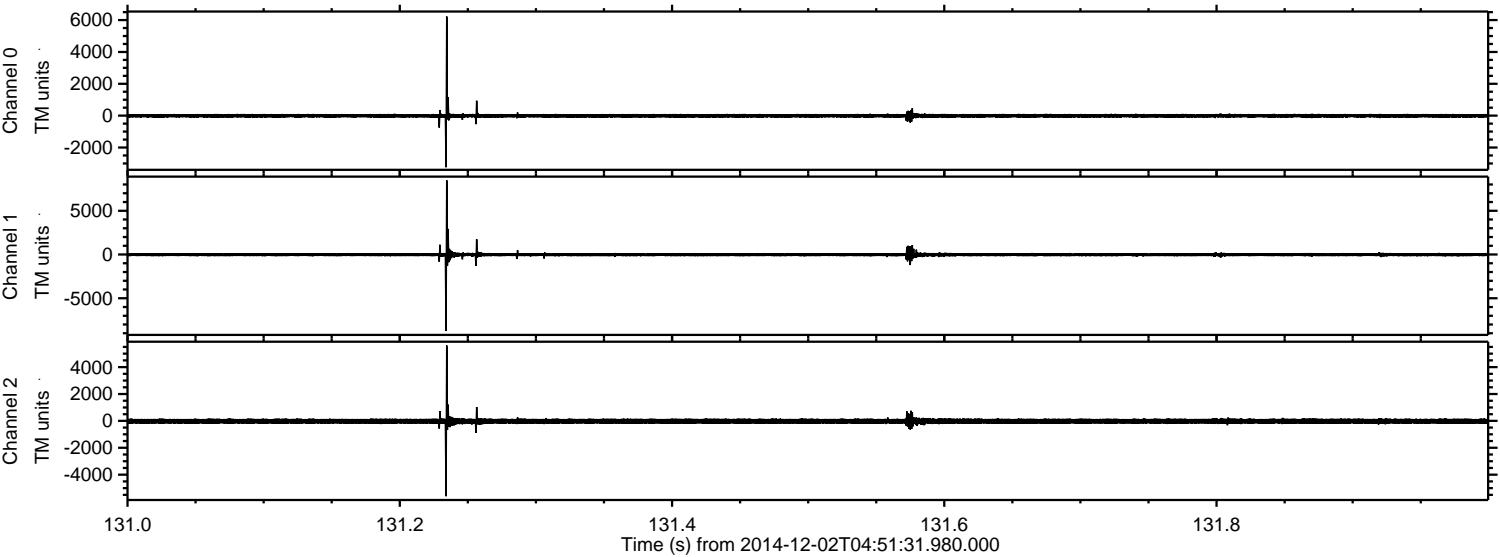


ELMAVAN 3D WAVEFORMS (Measured data sampled at 50 kHz) 49789 packets of 144 samples from 2014-12-02T04:51:31.980.000. Part 133/144

Processed Tue Dec 2 06:00:05 2014 by ELM ver.2012-10-06 from 001__elm20141202_045130__dat00.bin

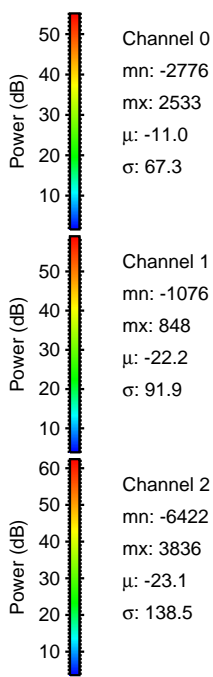
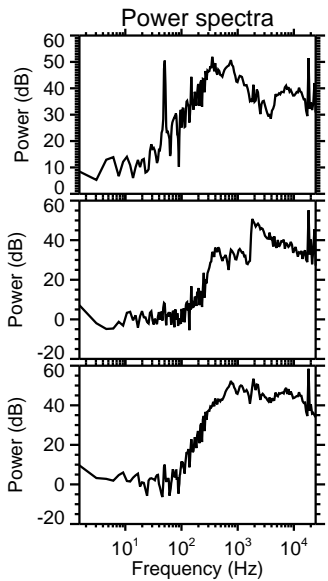
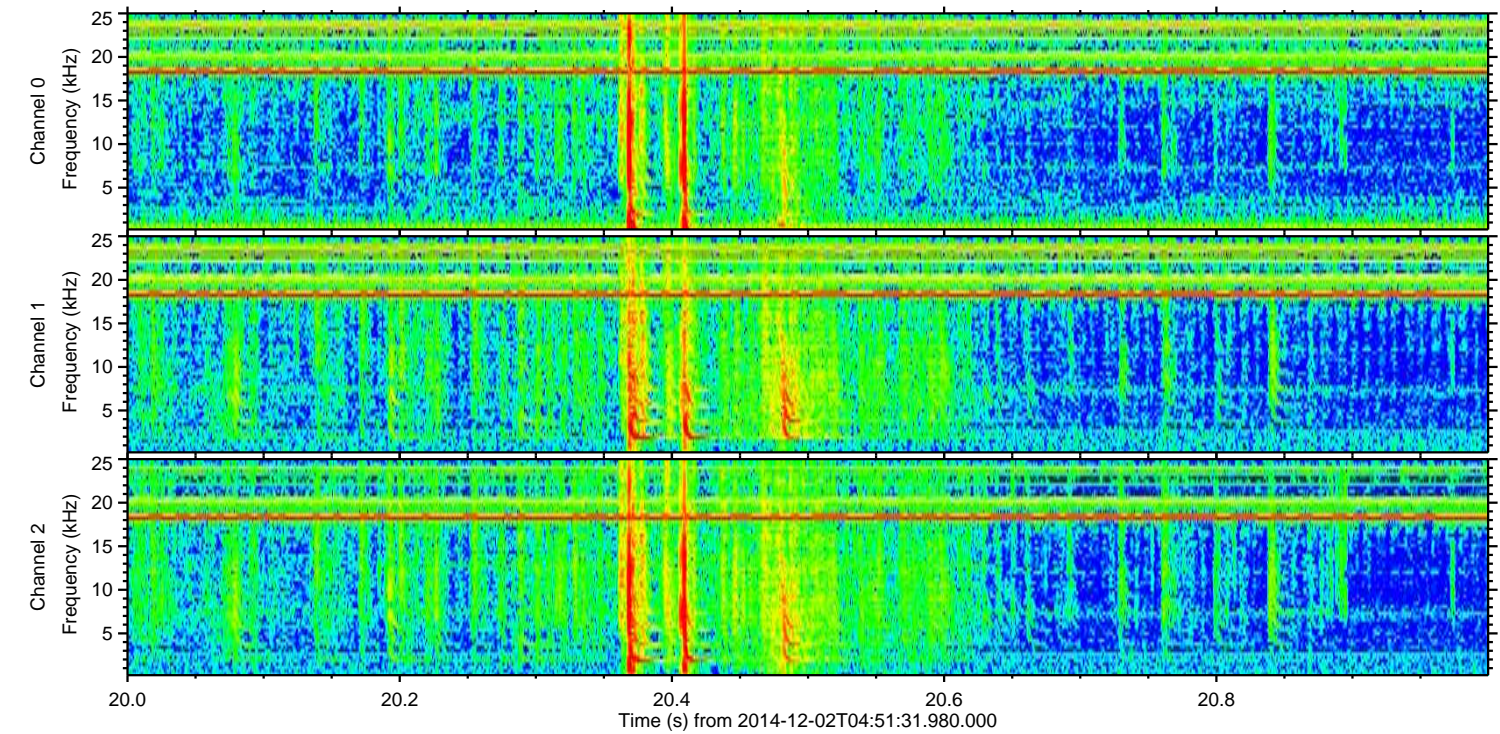
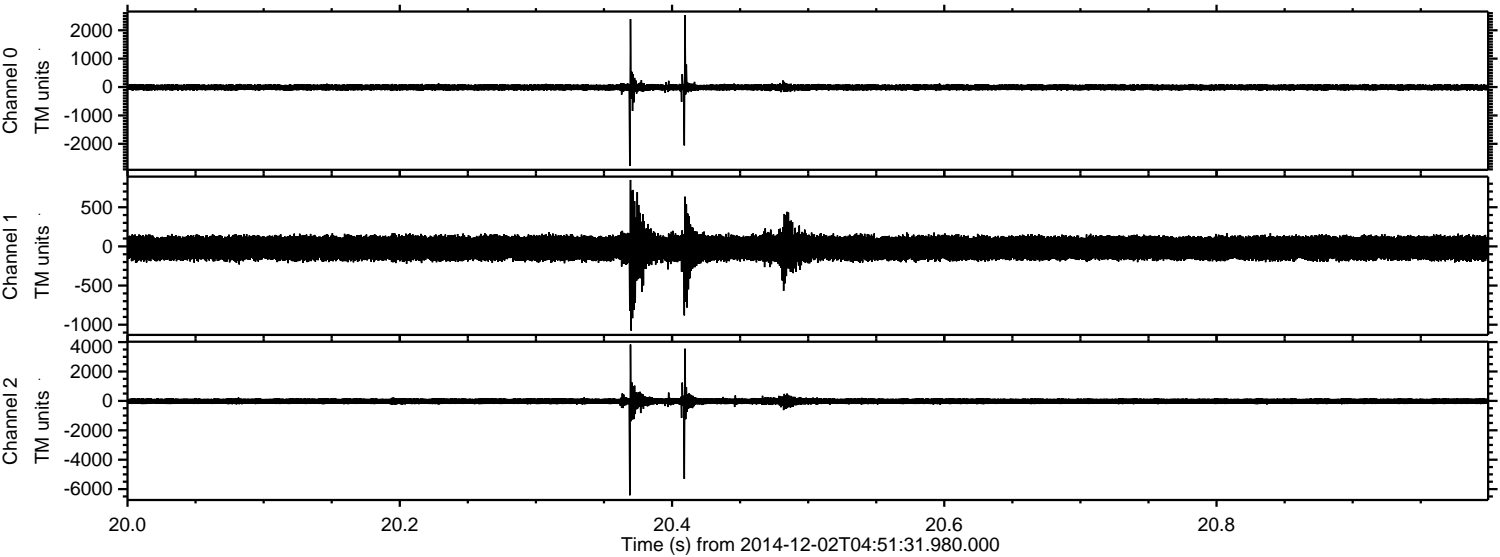


Processed Tue Dec 2 06:00:06 2014 by ELM ver.2012-10-06 from 001__elm20141202_045130__dat00.bin

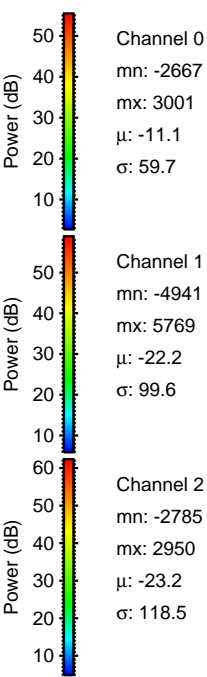
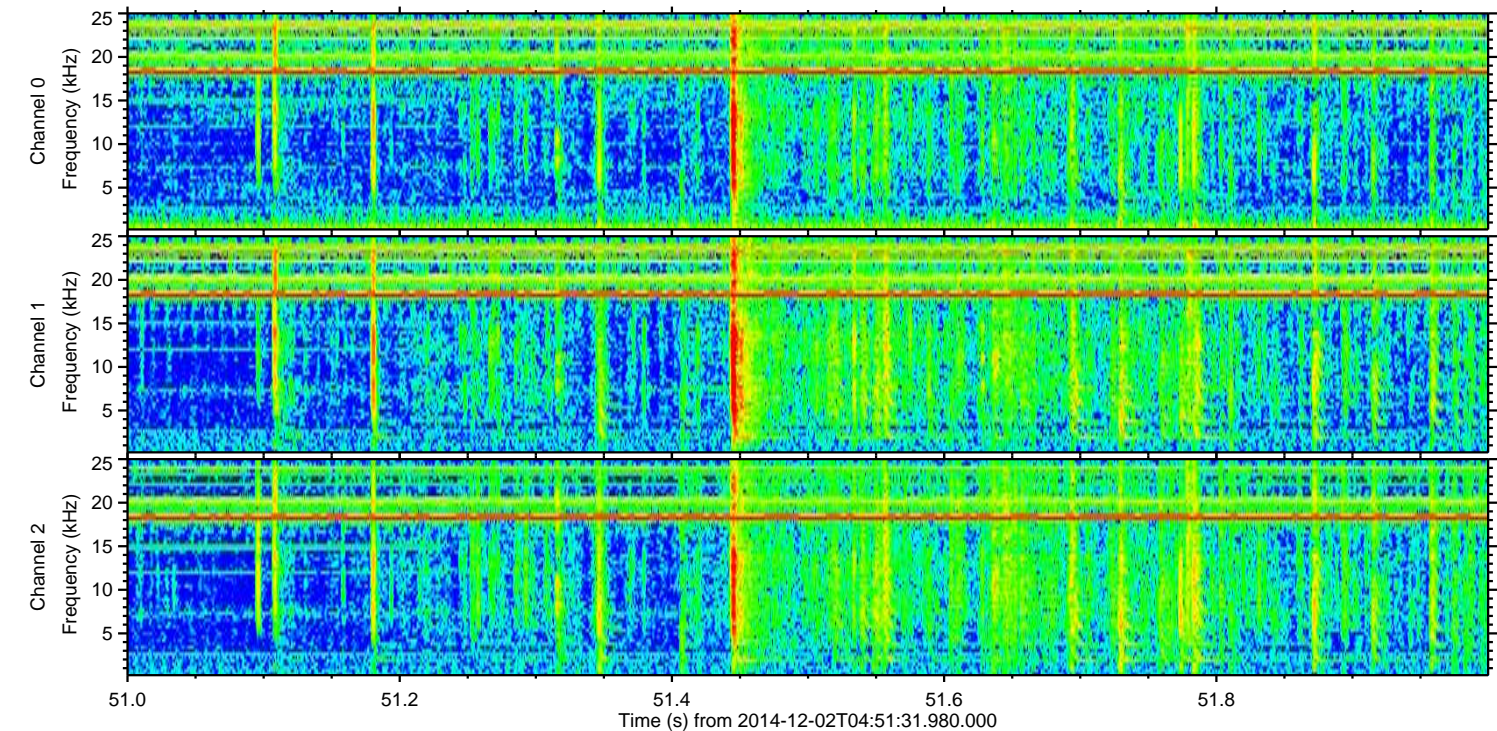
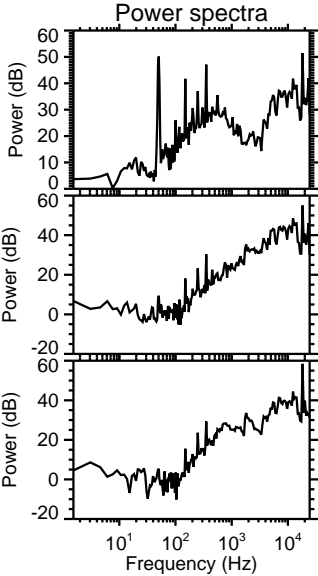
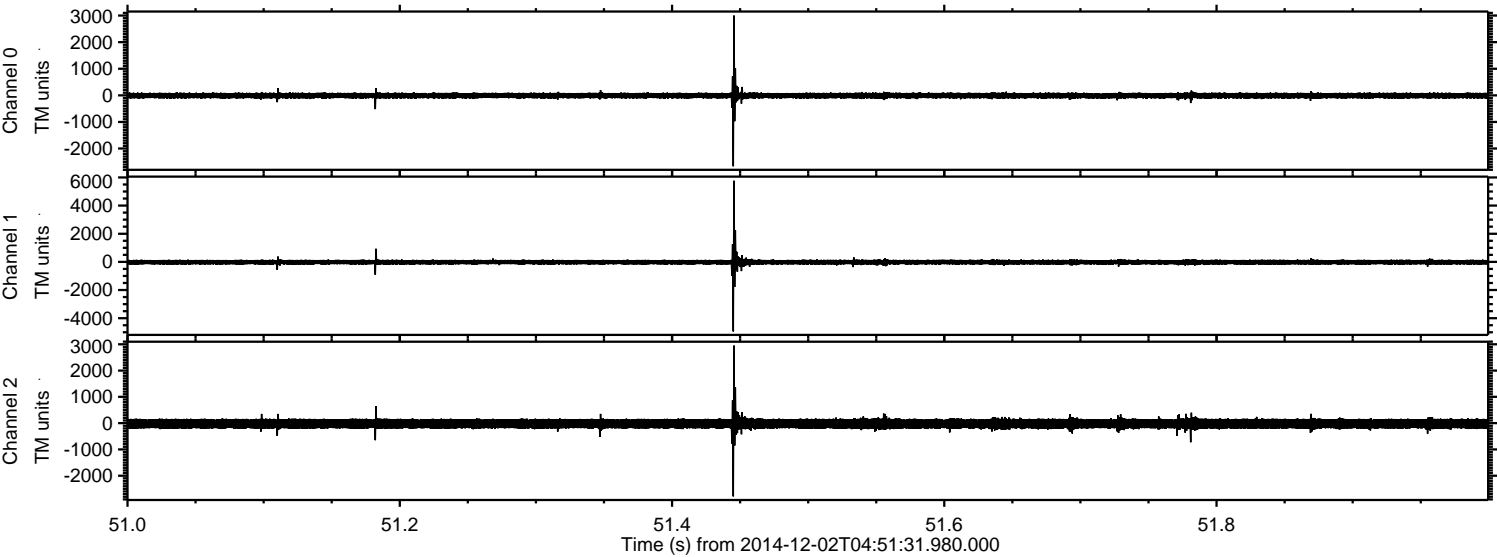


ELMAVAN 3D WAVEFORMS (Measured data sampled at 50 kHz) 49789 packets of 144 samples from 2014-12-02T04:51:31.980.000. Part 21/144

Processed Tue Dec 2 06:00:07 2014 by ELM ver.2012-10-06 from 001__elm20141202_045130__dat00.bin

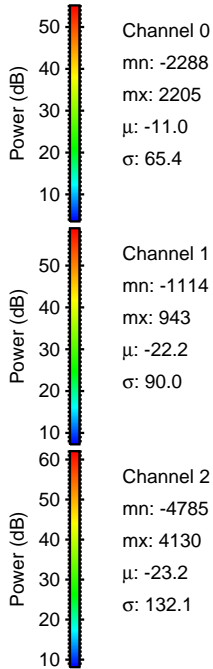
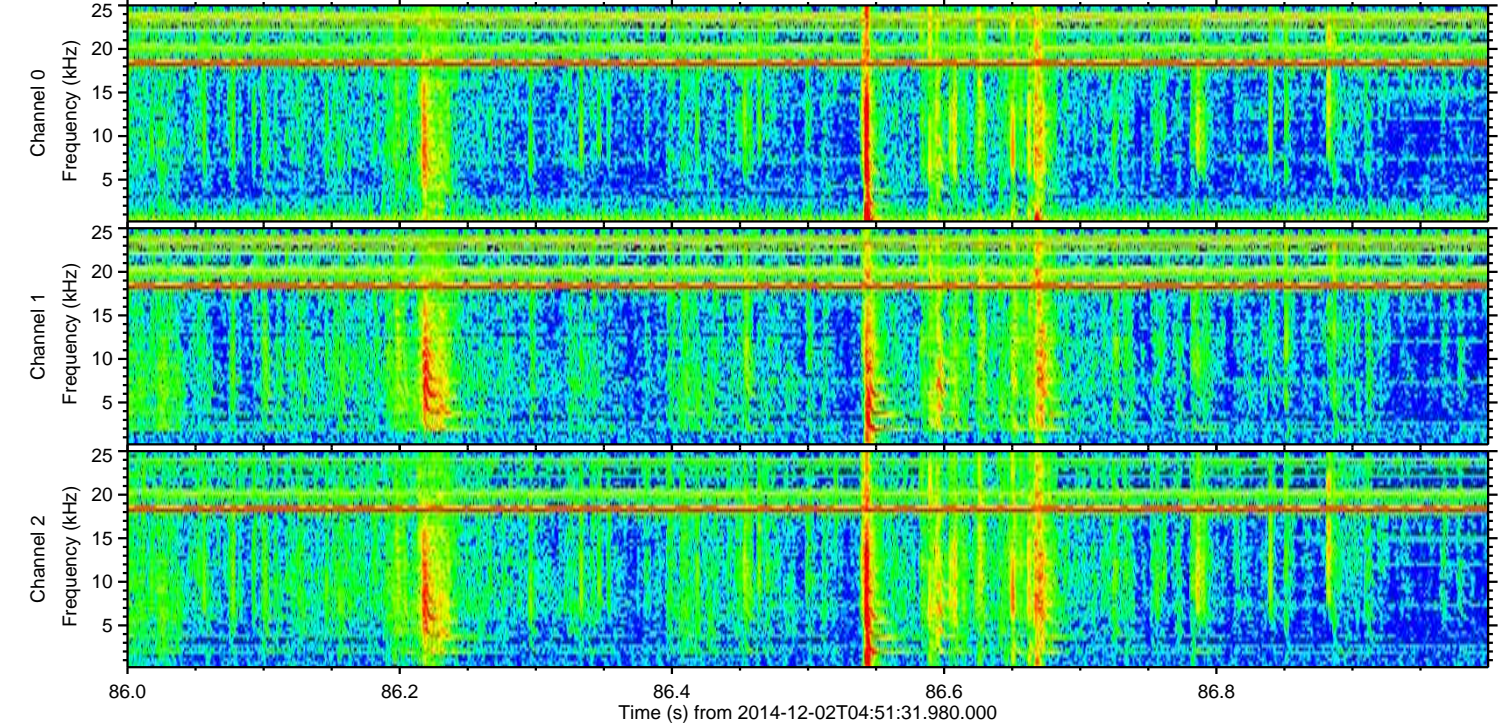
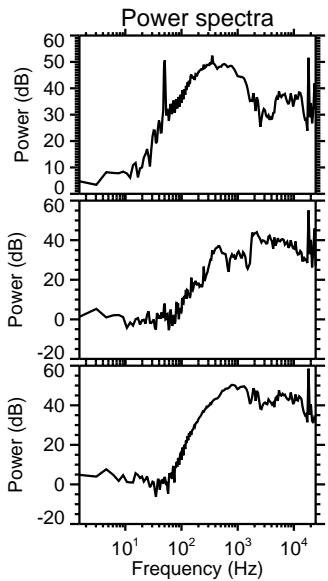
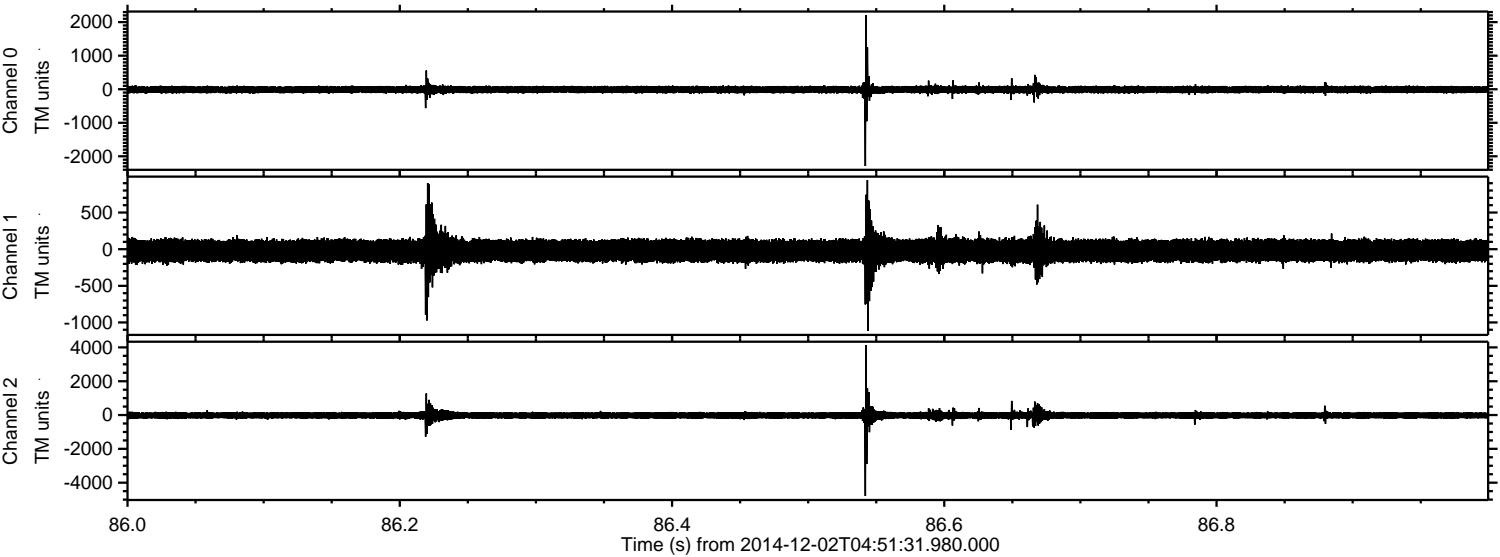


Processed Tue Dec 2 06:00:08 2014 by ELM ver.2012-10-06 from 001__elm20141202_045130__dat00.bin

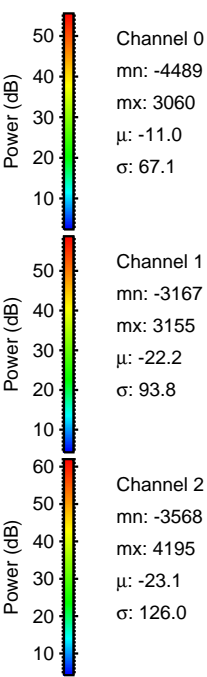
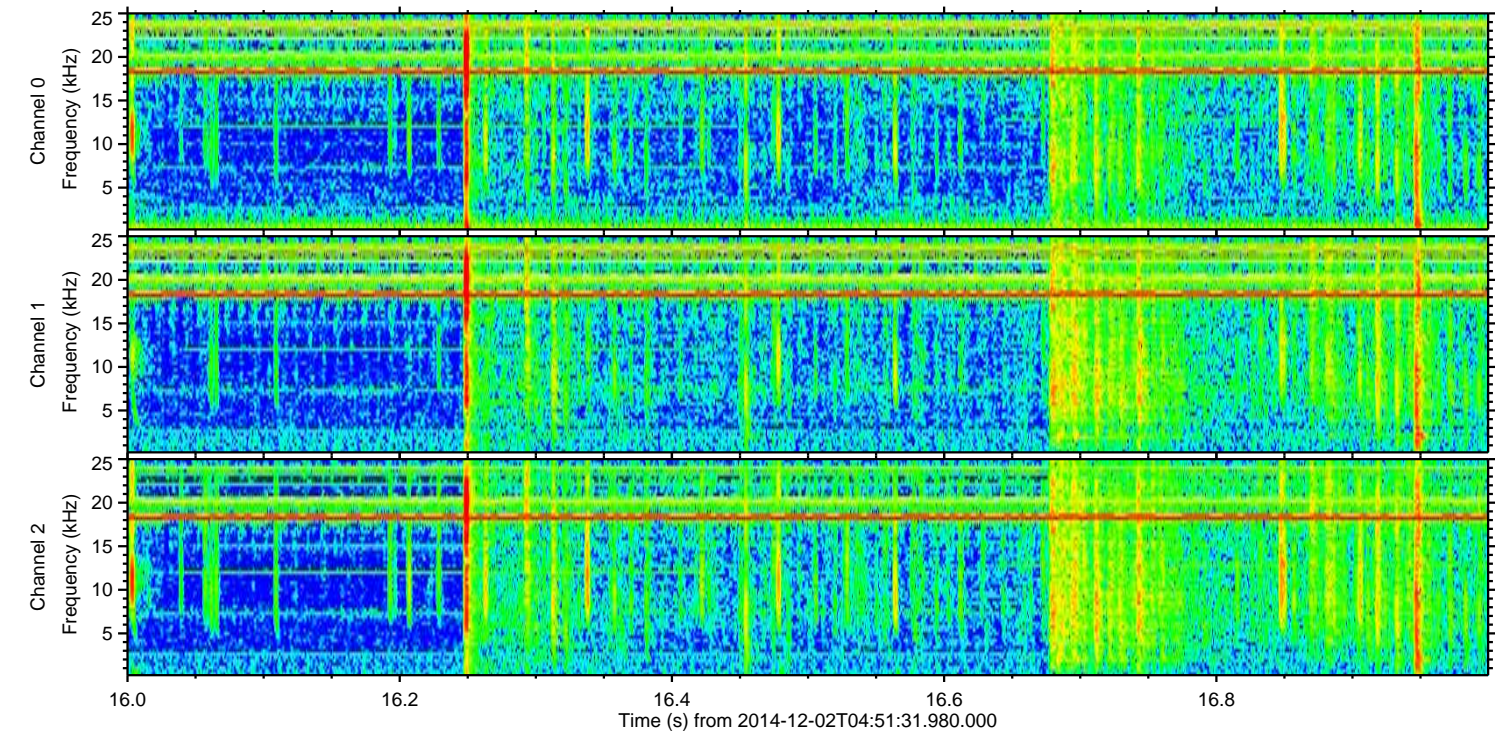
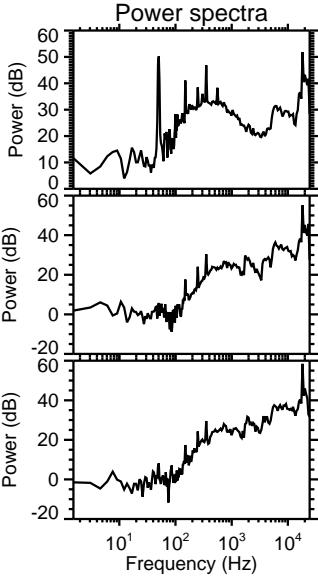
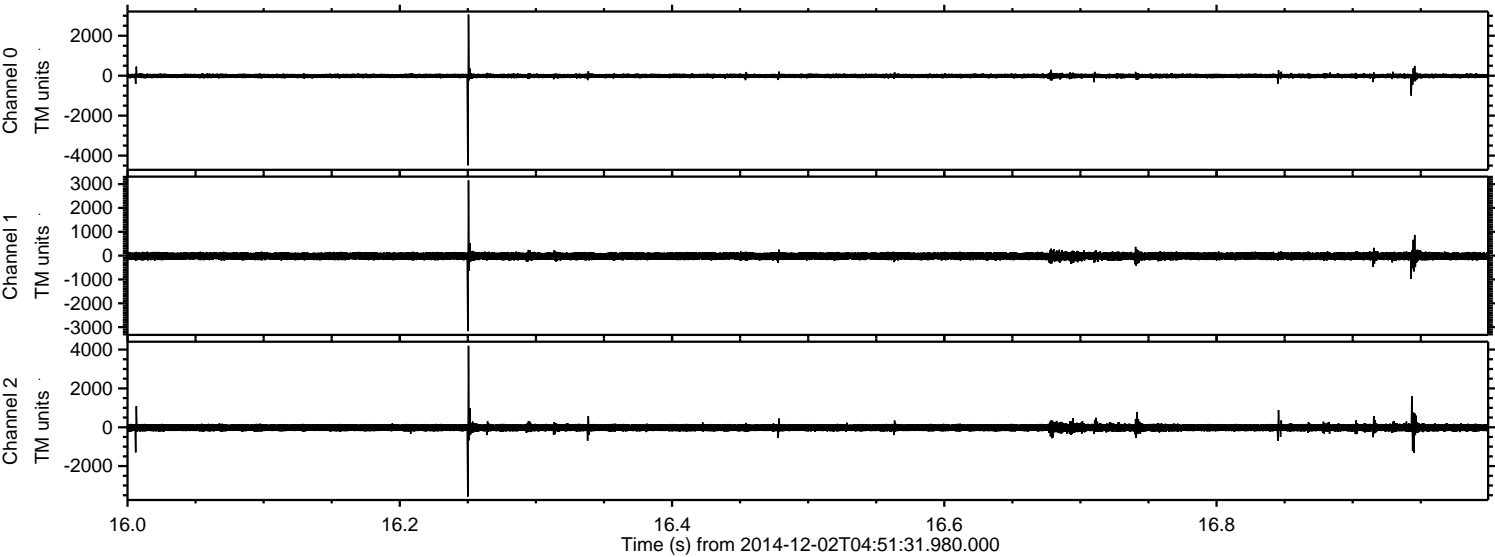


ELMAVAN 3D WAVEFORMS (Measured data sampled at 50 kHz) 49789 packets of 144 samples from 2014-12-02T04:51:31.980.000. Part 87/144

Processed Tue Dec 2 06:00:09 2014 by ELM ver.2012-10-06 from 001__elm20141202_045130__dat00.bin



Processed Tue Dec 2 06:00:10 2014 by ELM ver.2012-10-06 from 001__elm20141202_045130__dat00.bin

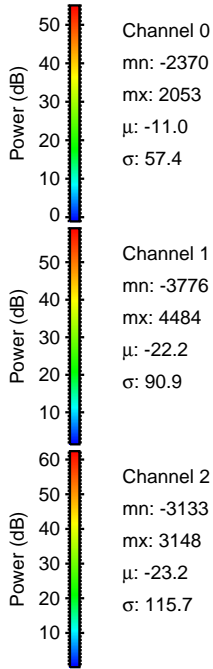
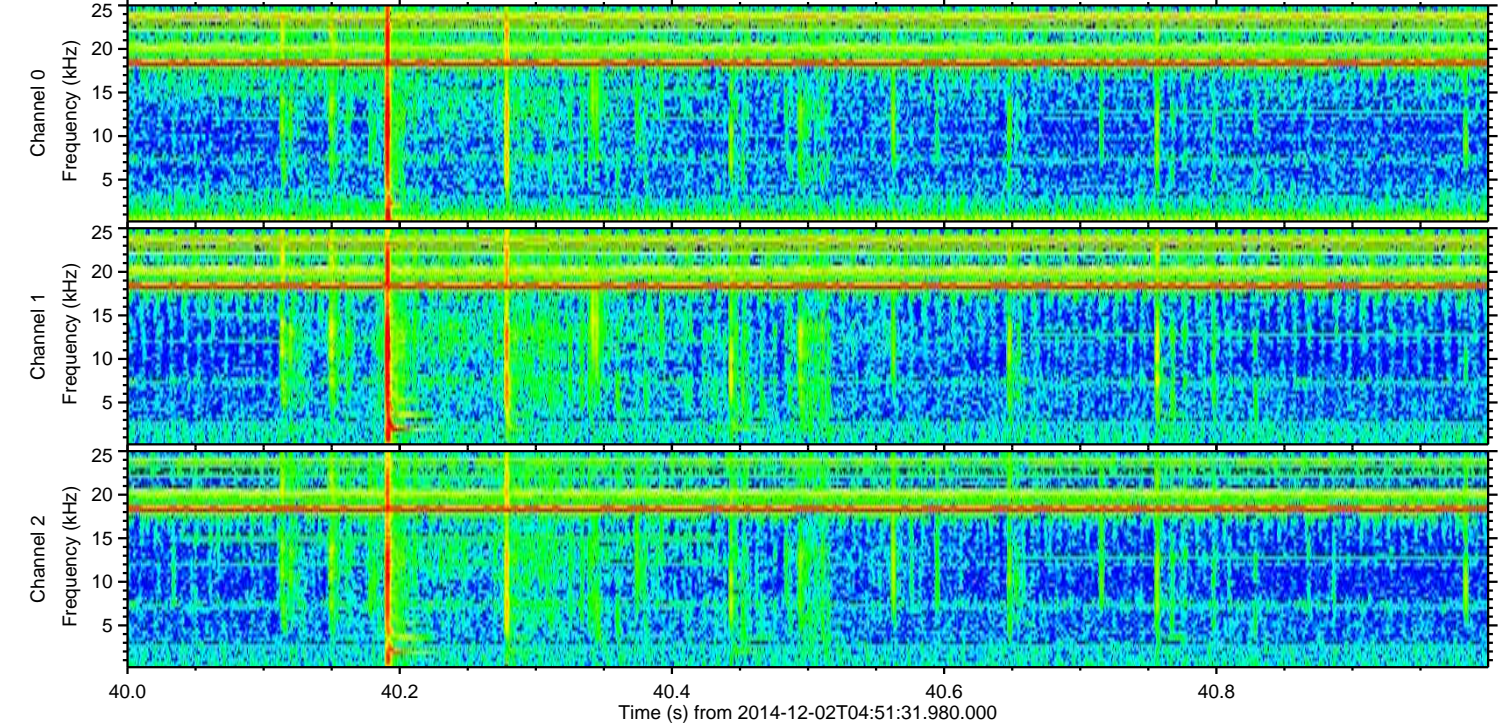
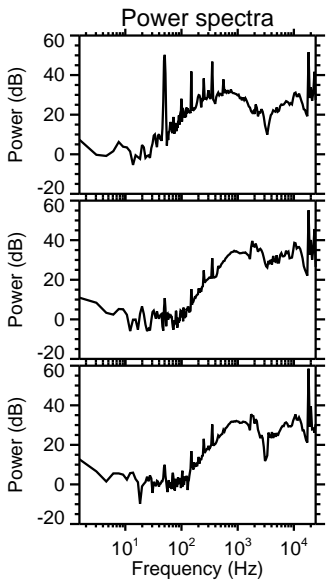
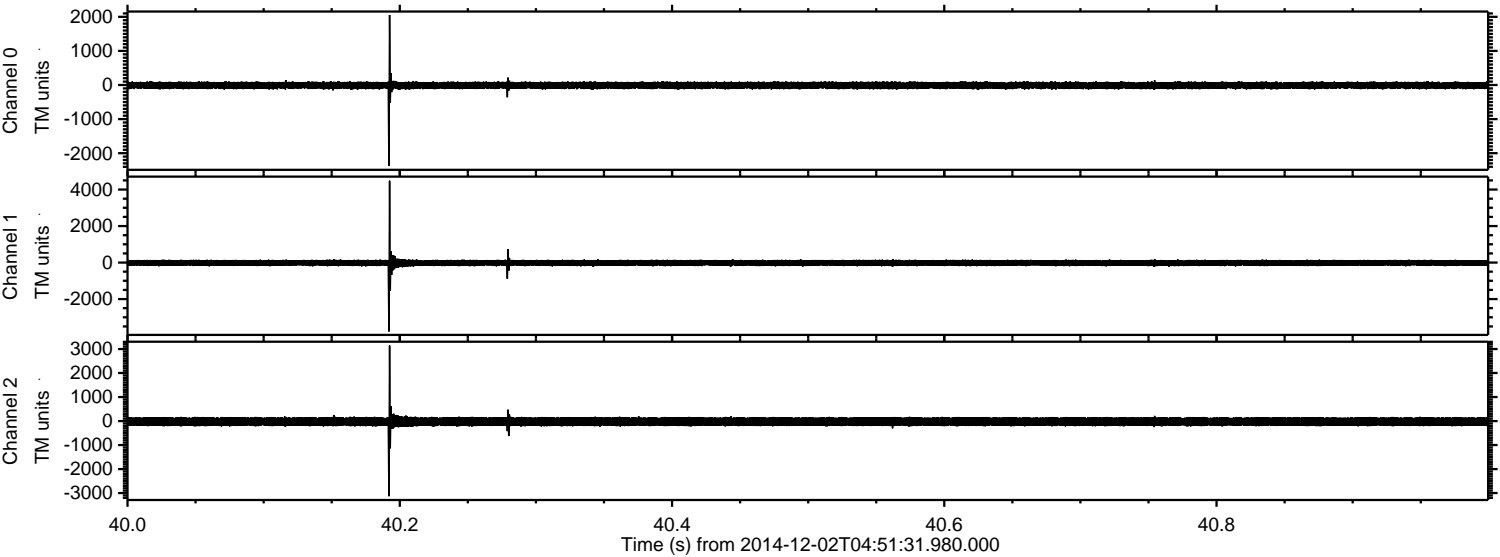


Channel 0
mn: -4489
mx: 3060
 μ : -11.0
 σ : 67.1

Channel 1
mn: -3167
mx: 3155
 μ : -22.2
 σ : 93.8

Channel 2
mn: -3568
mx: 4195
 μ : -23.1
 σ : 126.0

Processed Tue Dec 2 06:00:10 2014 by ELM ver.2012-10-06 from 001__elm20141202_045130__dat00.bin



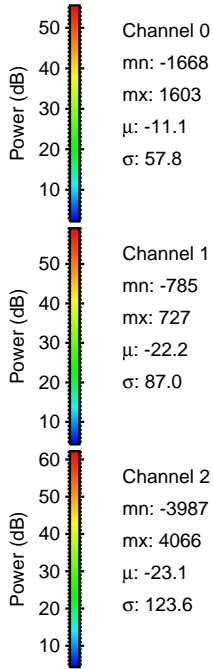
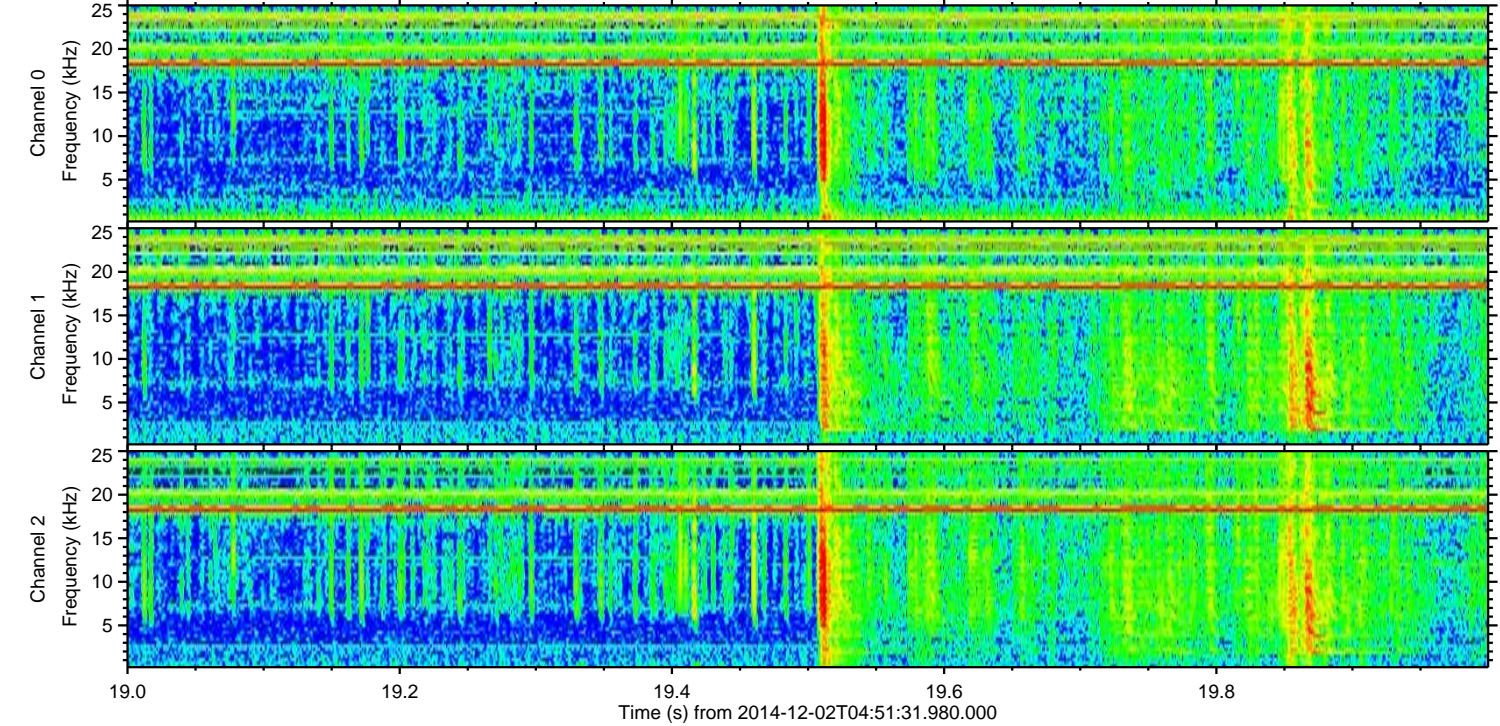
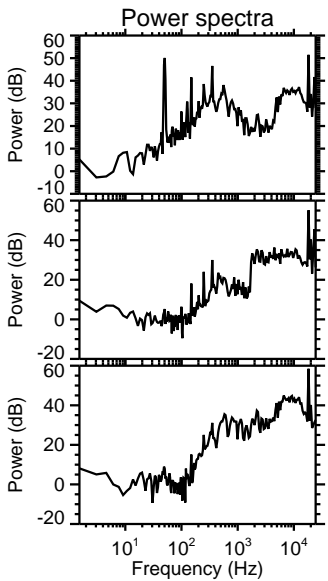
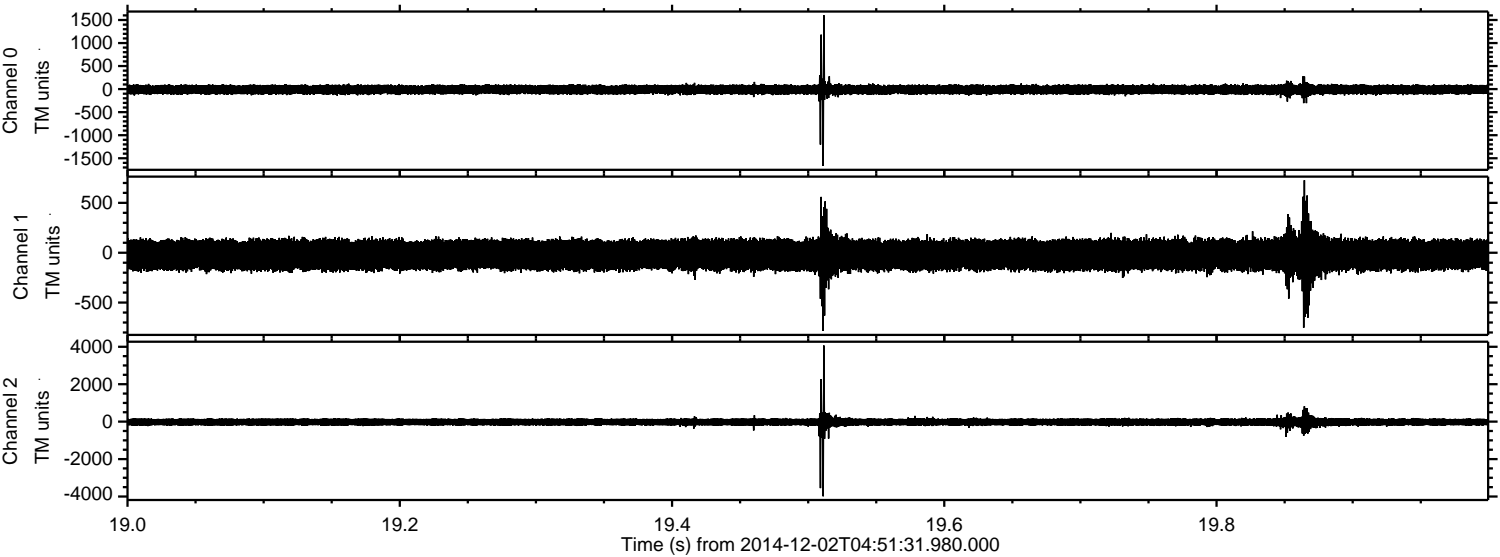
Channel 0
mn: -2370
mx: 2053
 μ : -11.0
 σ : 57.4

Channel 1
mn: -3776
mx: 4484
 μ : -22.2
 σ : 90.9

Channel 2
mn: -3133
mx: 3148
 μ : -23.2
 σ : 115.7

ELMAVAN 3D WAVEFORMS (Measured data sampled at 50 kHz) 49789 packets of 144 samples from 2014-12-02T04:51:31.980.000. Part 20/144

Processed Tue Dec 2 06:00:12 2014 by ELM ver.2012-10-06 from 001__elm20141202_045130__dat00.bin



Channel 0
mn: -1668
mx: 1603
 μ : -11.1
 σ : 57.8

Channel 1
mn: -785
mx: 727
 μ : -22.2
 σ : 87.0

Channel 2
mn: -3987
mx: 4066
 μ : -23.1
 σ : 123.6

Processed Tue Dec 2 06:00:13 2014 by ELM ver.2012-10-06 from 001__elm20141202_045130__dat00.bin

