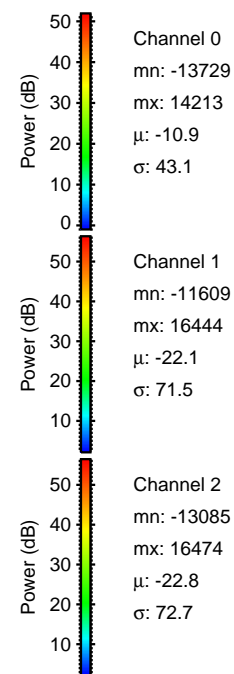
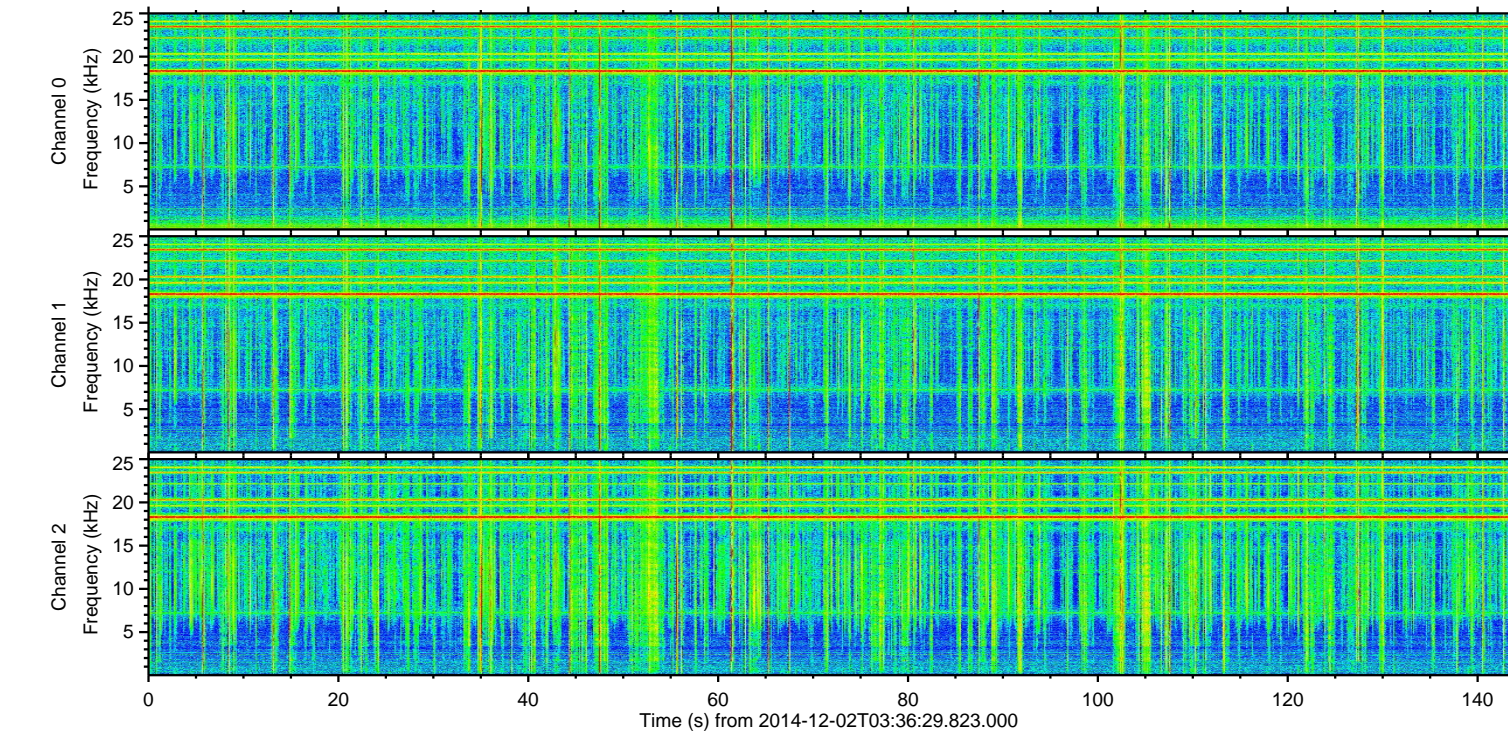
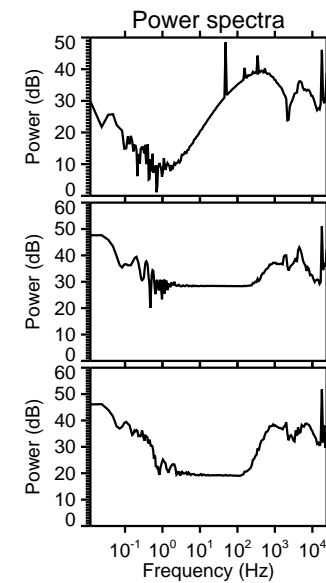
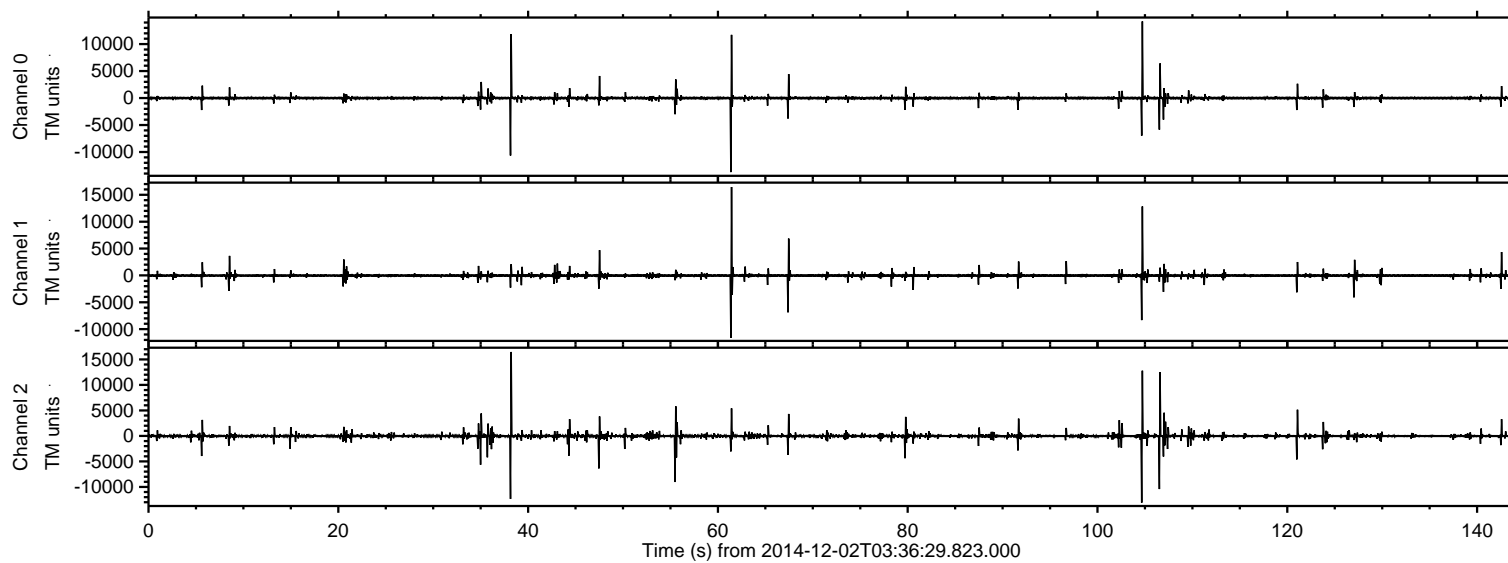


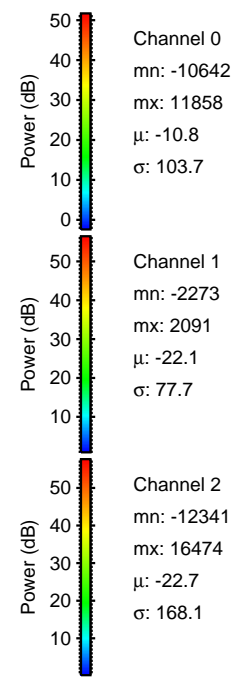
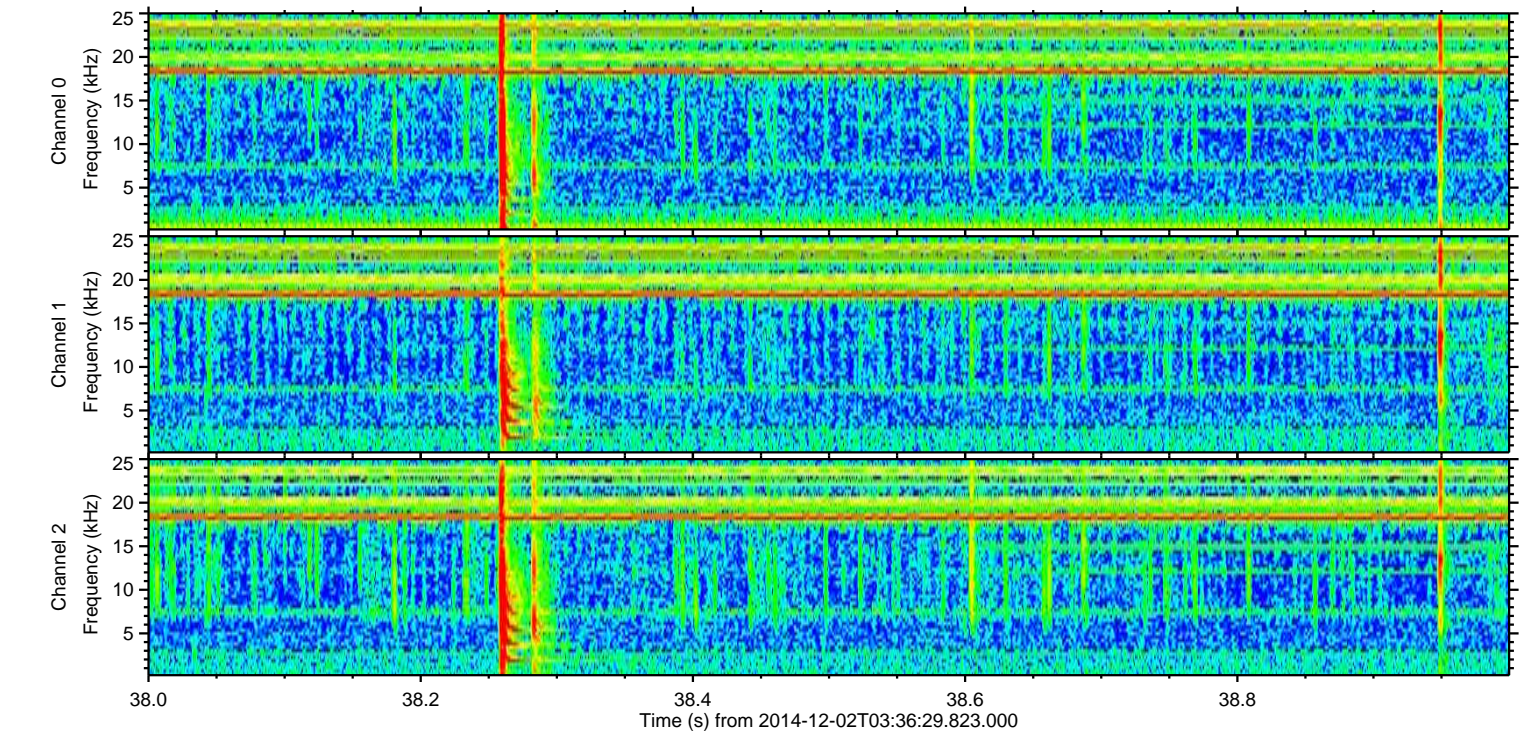
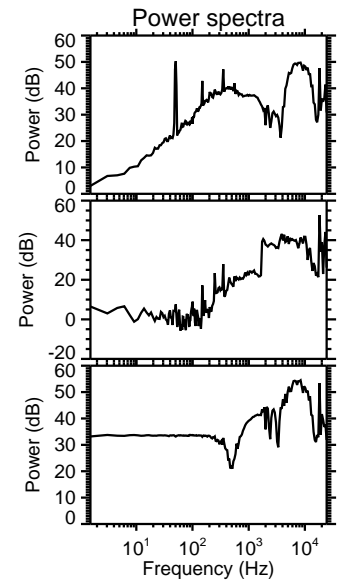
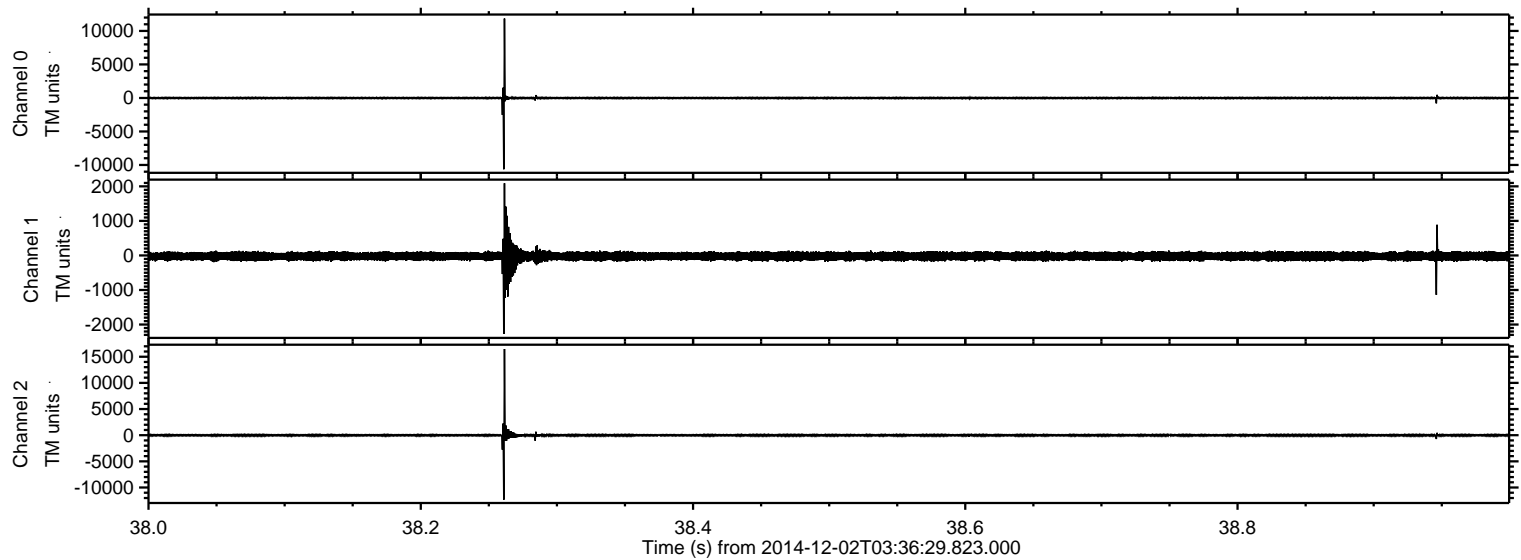
ELMAVAN 3D WAVEFORMS (Measured data sampled at 50 kHz) 49784 packets of 144 samples from 2014-12-02T03:36:29.823.000.

Processed Tue Dec 2 04:44:00 2014 by ELM ver.2012-10-06 from 001__elm20141202_033628__dat00.bin

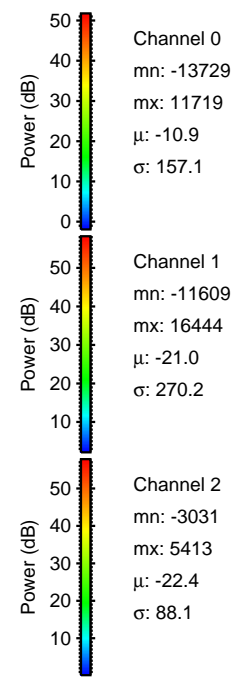
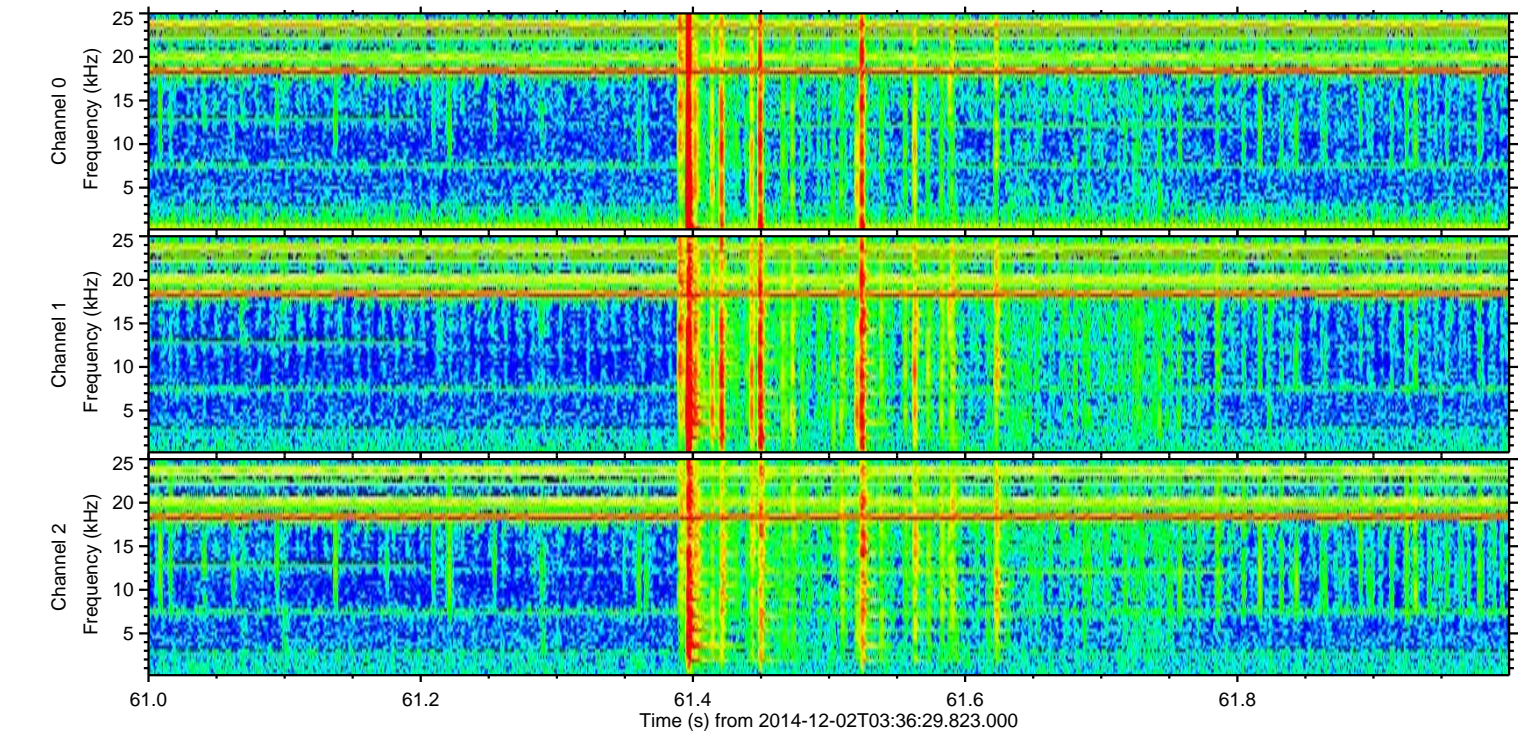
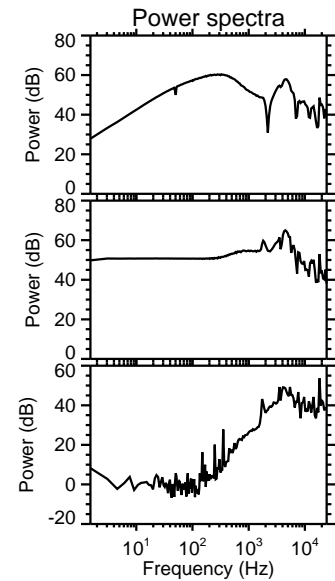
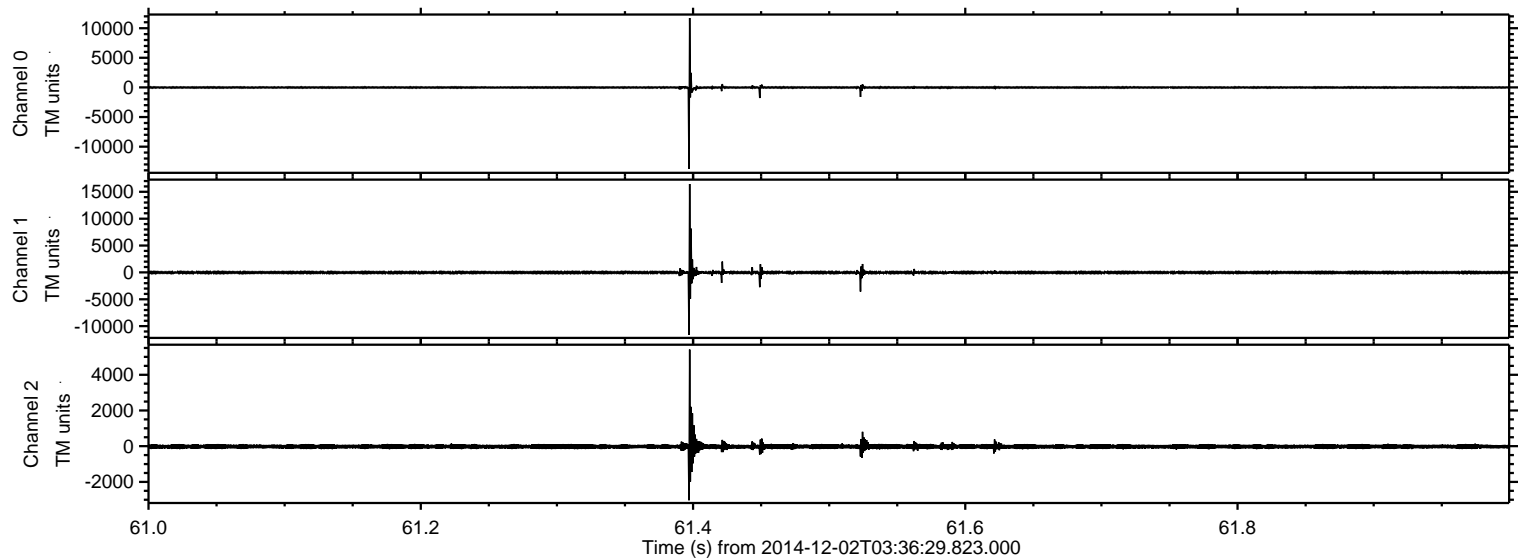


ELMAVAN 3D WAVEFORMS (Measured data sampled at 50 kHz) 49784 packets of 144 samples from 2014-12-02T03:36:29.823.000. Part 39/144

Processed Tue Dec 2 04:44:18 2014 by ELM ver.2012-10-06 from 001__elm20141202_033628__dat00.bin

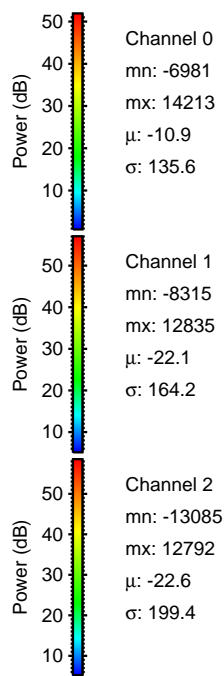
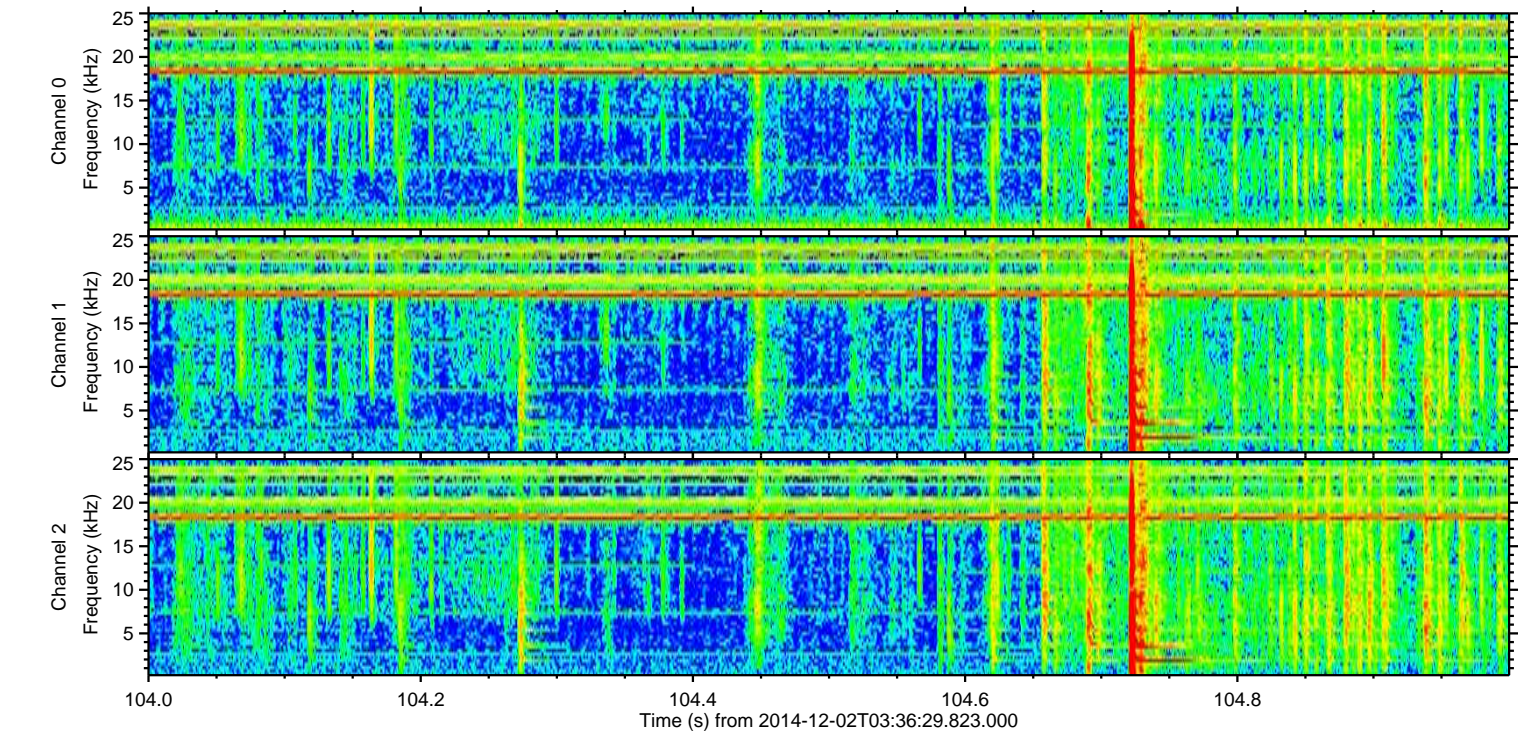
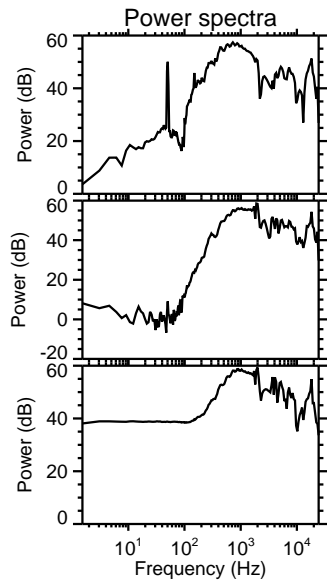
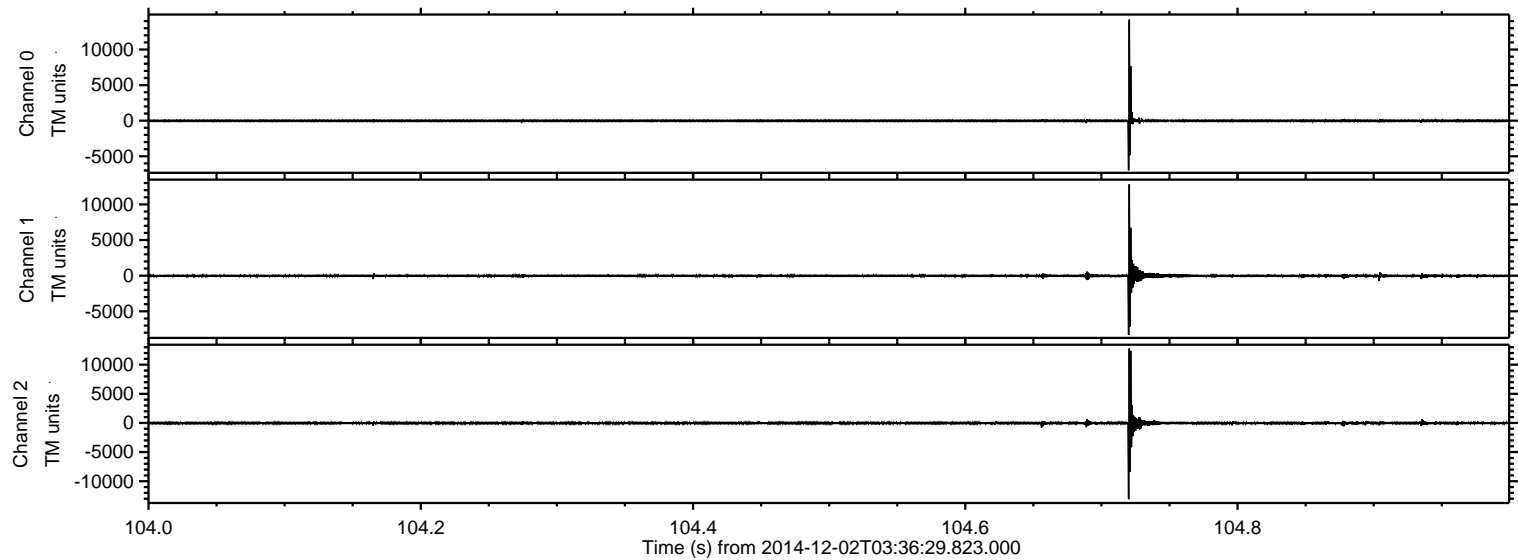


Processed Tue Dec 2 04:44:19 2014 by ELM ver.2012-10-06 from 001__elm20141202_033628__dat00.bin



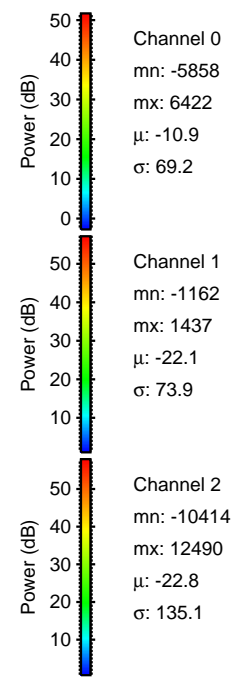
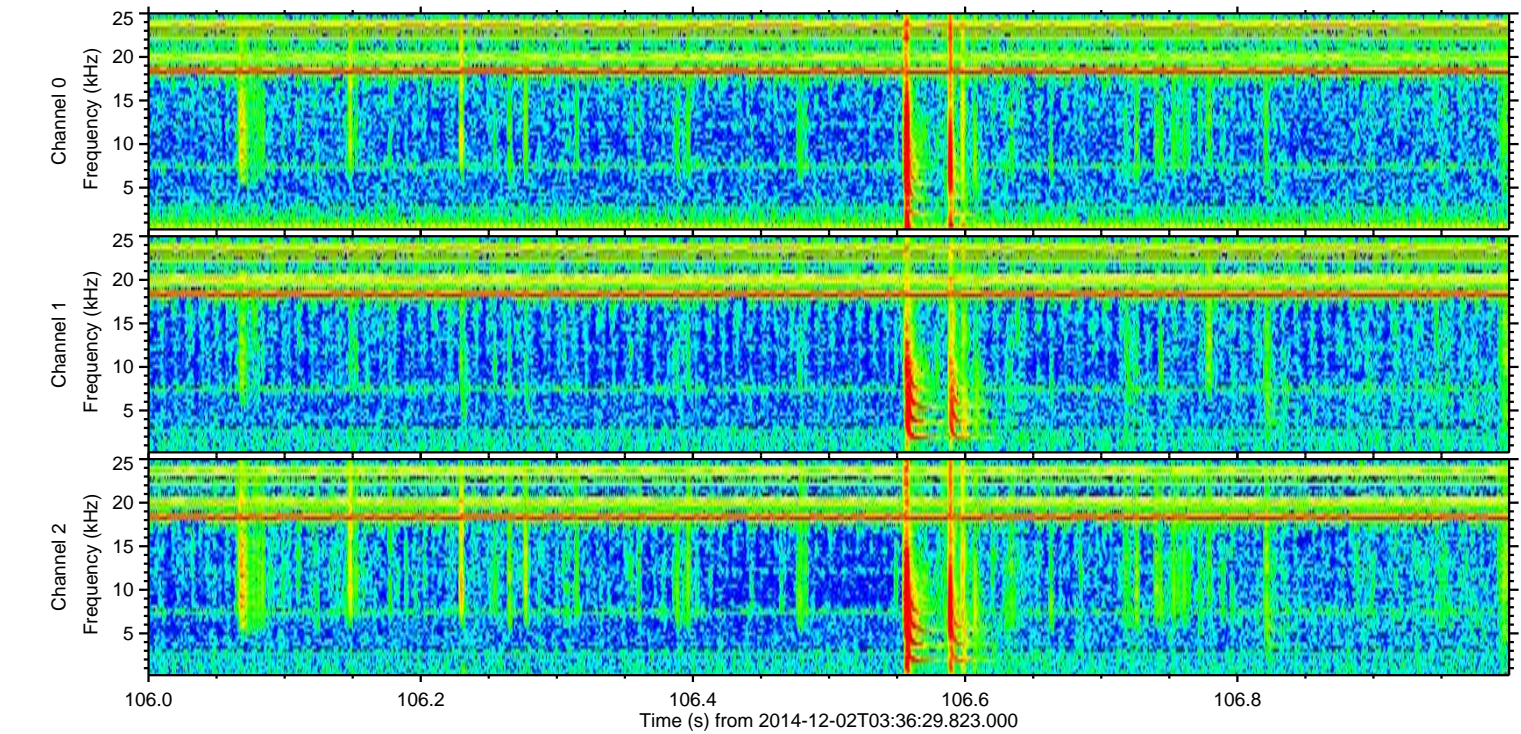
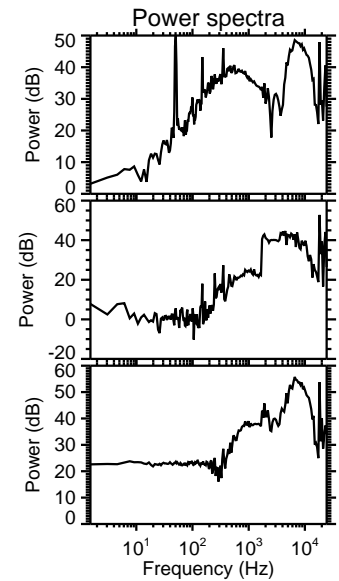
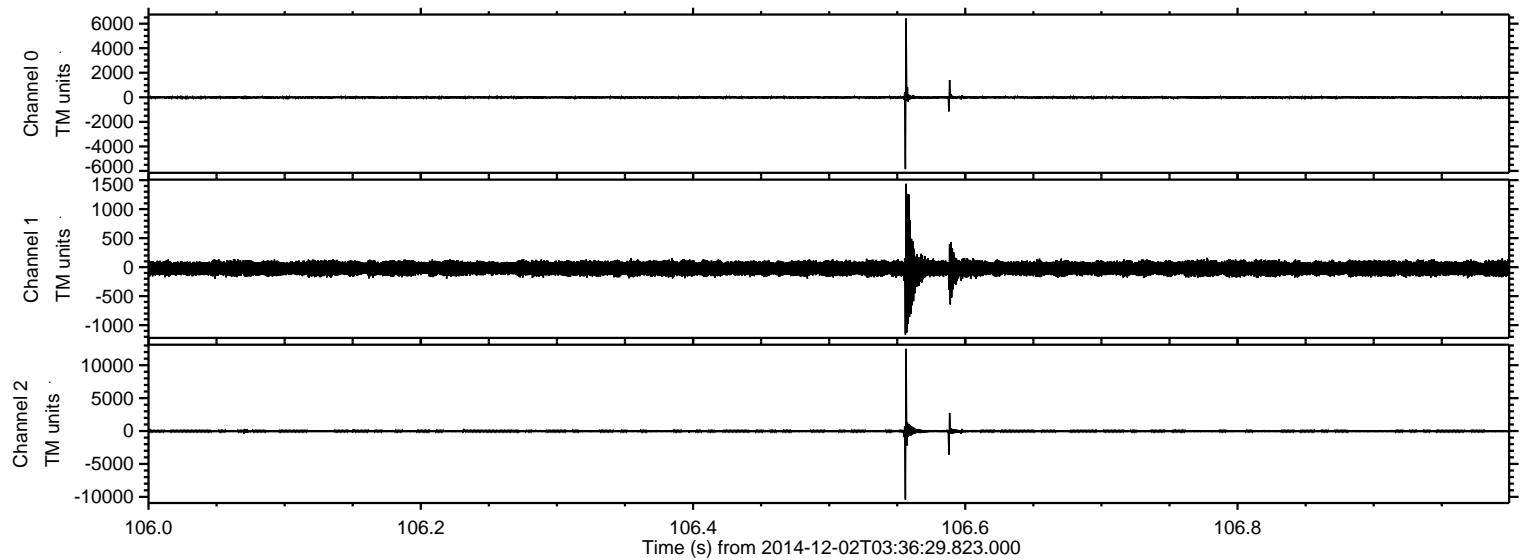
ELMAVAN 3D WAVEFORMS (Measured data sampled at 50 kHz) 49784 packets of 144 samples from 2014-12-02T03:36:29.823.000. Part 105/144

Processed Tue Dec 2 04:44:20 2014 by ELM ver.2012-10-06 from 001__elm20141202_033628__dat00.bin



ELMAVAN 3D WAVEFORMS (Measured data sampled at 50 kHz) 49784 packets of 144 samples from 2014-12-02T03:36:29.823.000. Part 107/144

Processed Tue Dec 2 04:44:21 2014 by ELM ver.2012-10-06 from 001__elm20141202_033628__dat00.bin



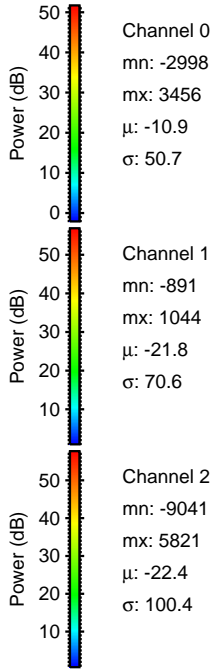
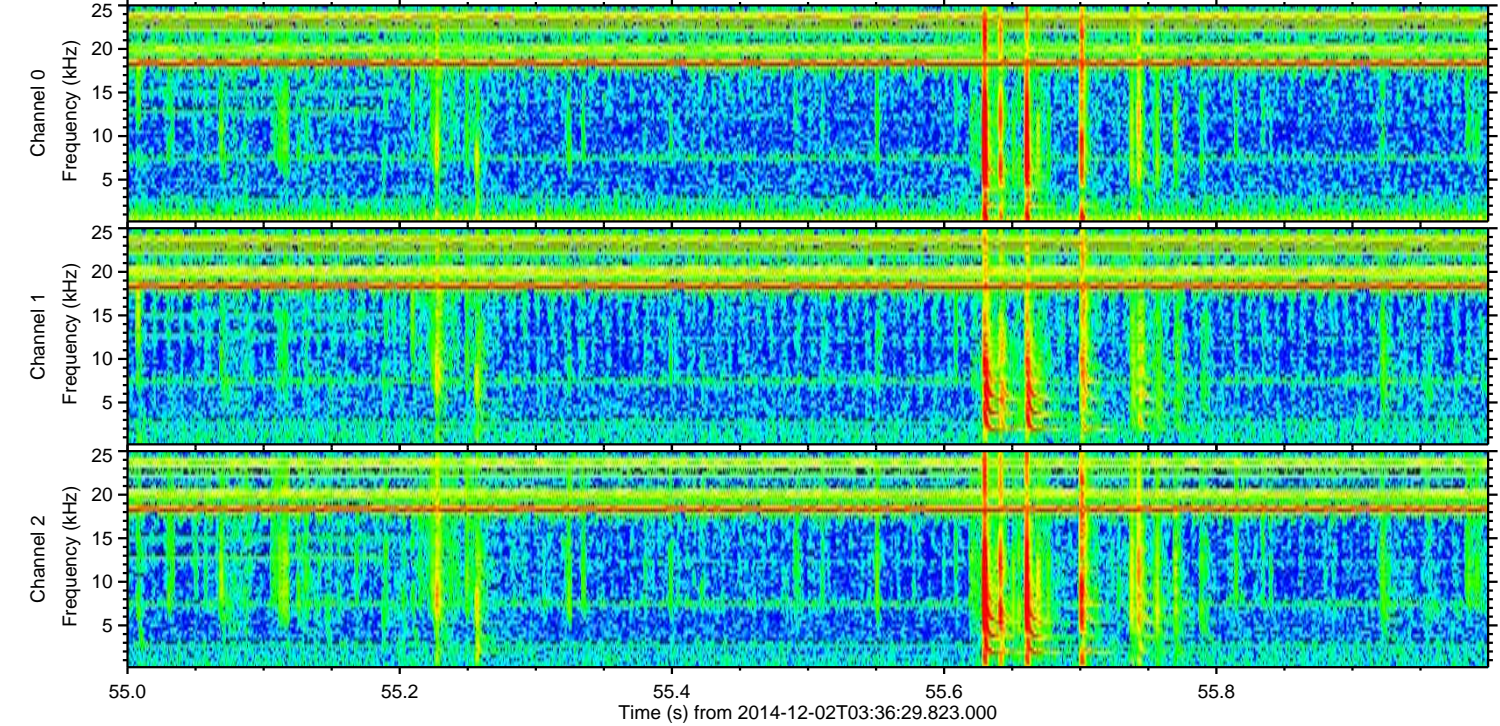
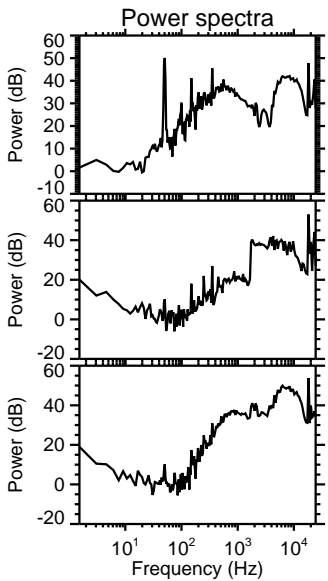
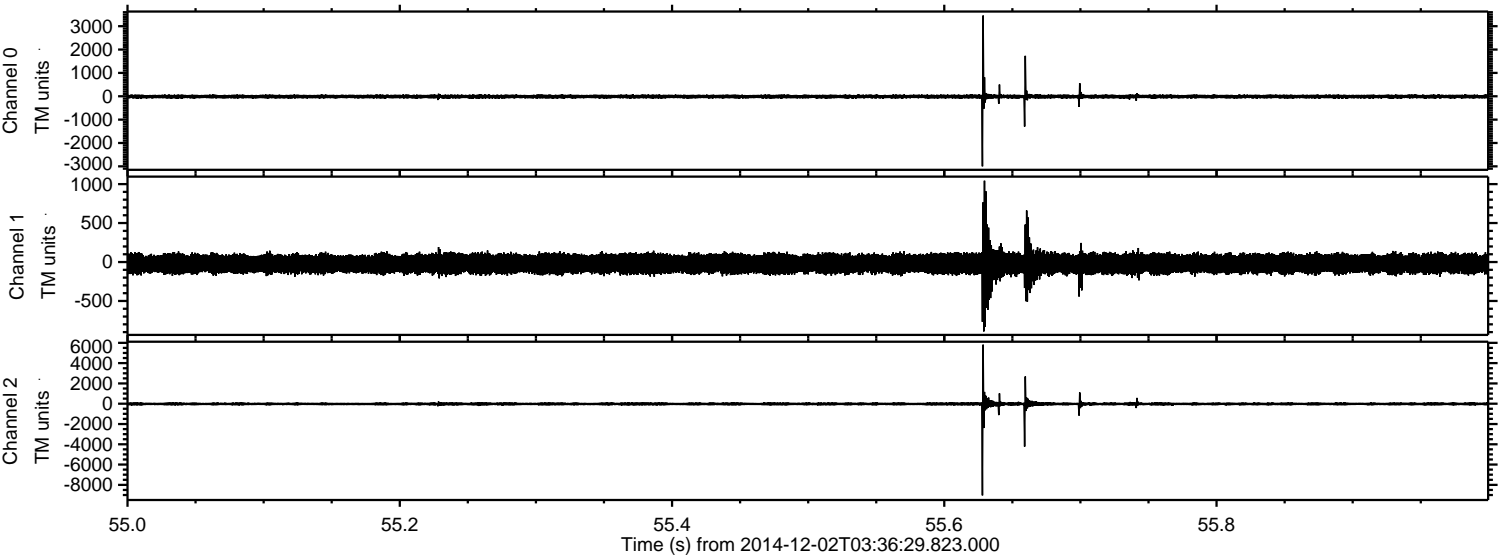
Channel 0
mn: -5858
mx: 6422
 μ : -10.9
 σ : 69.2

Channel 1
mn: -1162
mx: 1437
 μ : -22.1
 σ : 73.9

Channel 2
mn: -10414
mx: 12490
 μ : -22.8
 σ : 135.1

ELMAVAN 3D WAVEFORMS (Measured data sampled at 50 kHz) 49784 packets of 144 samples from 2014-12-02T03:36:29.823.000. Part 56/144

Processed Tue Dec 2 04:44:22 2014 by ELM ver.2012-10-06 from 001__elm20141202_033628__dat00.bin

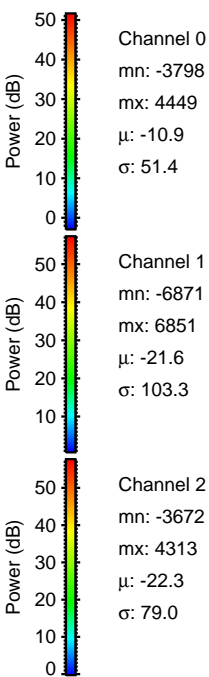
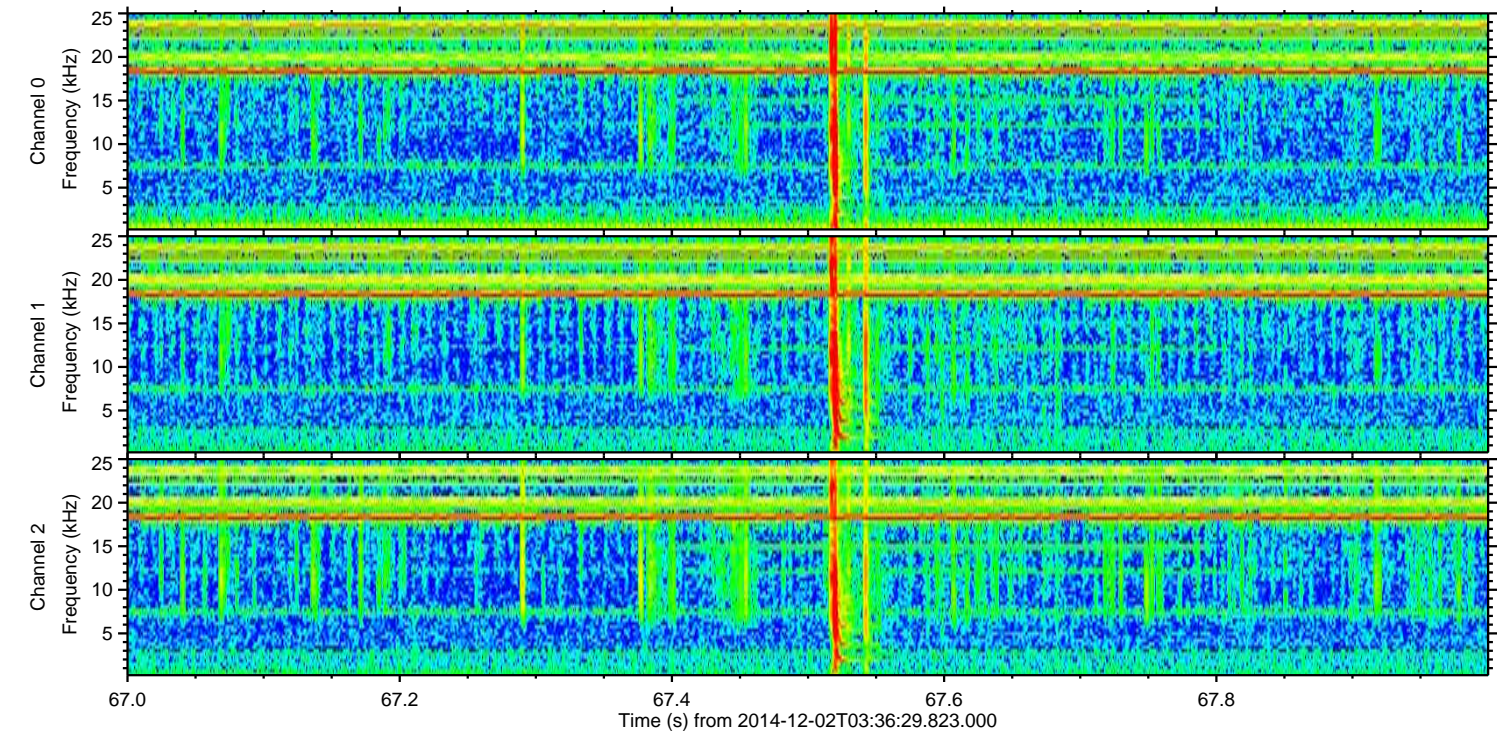
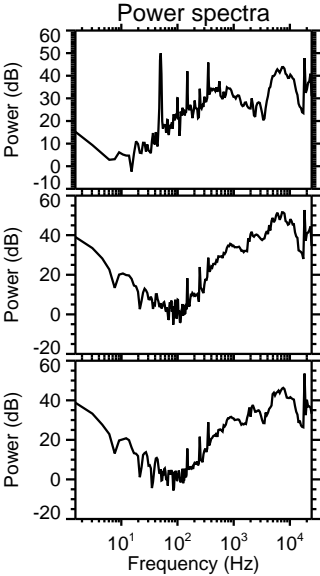
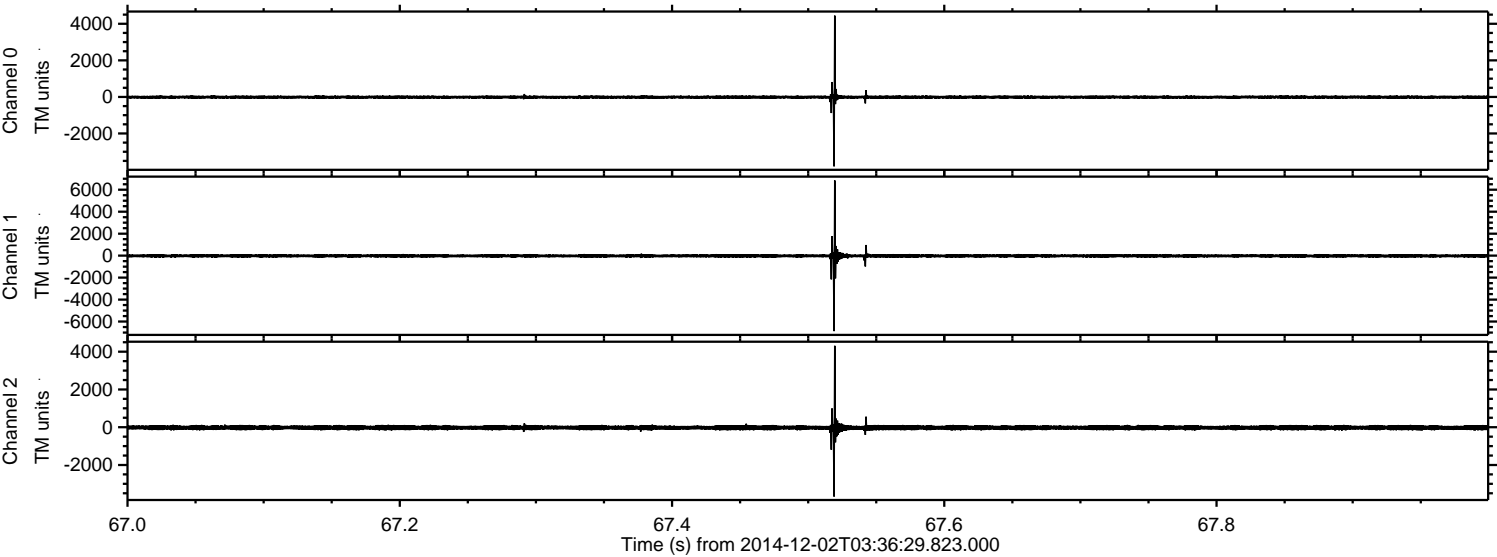


Channel 0
mn: -2998
mx: 3456
 μ : -10.9
 σ : 50.7

Channel 1
mn: -891
mx: 1044
 μ : -21.8
 σ : 70.6

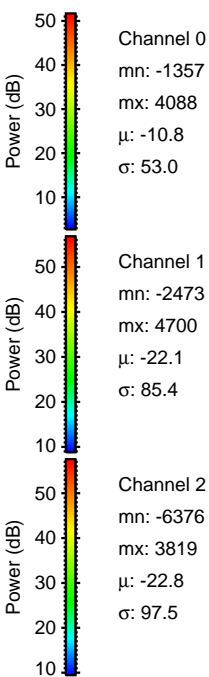
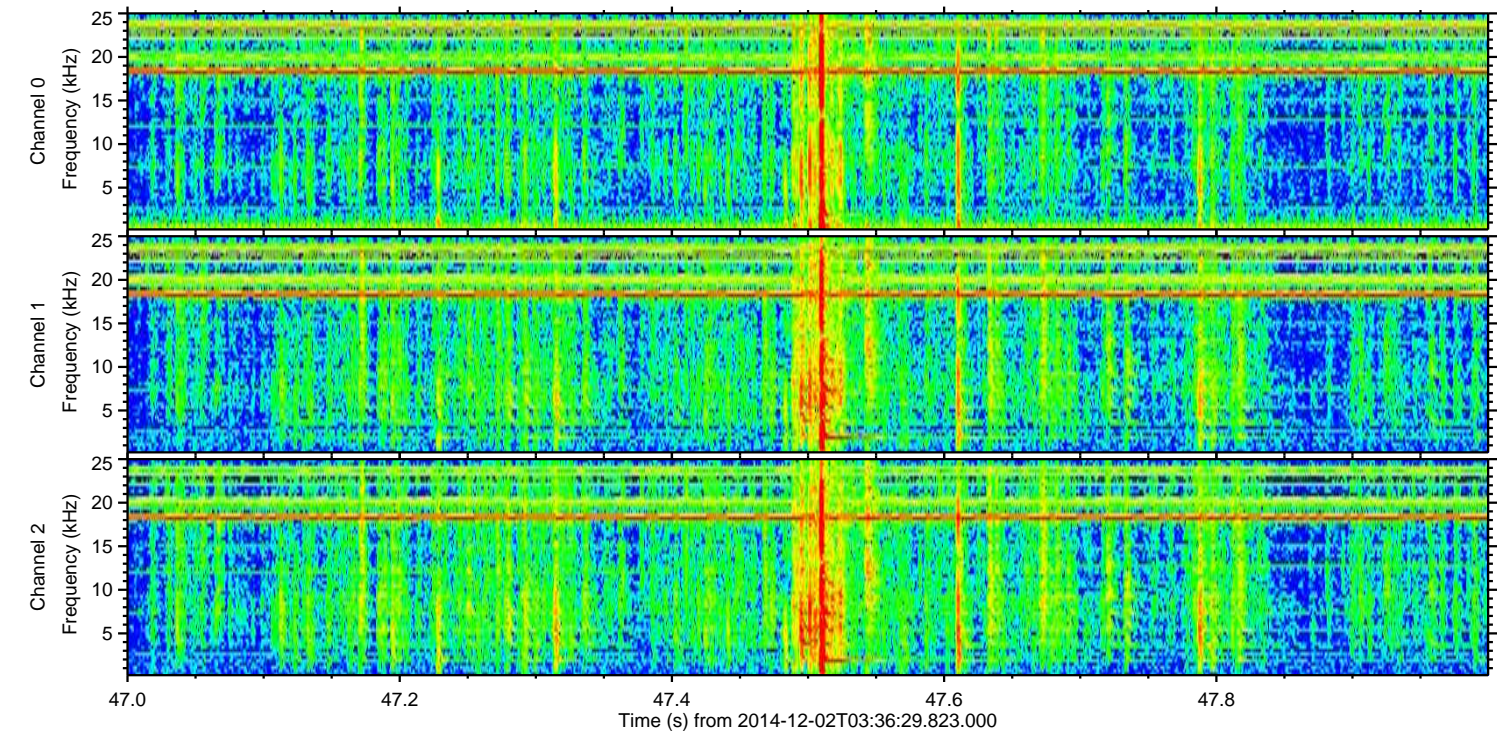
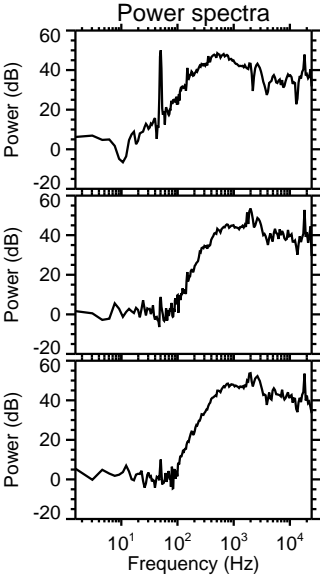
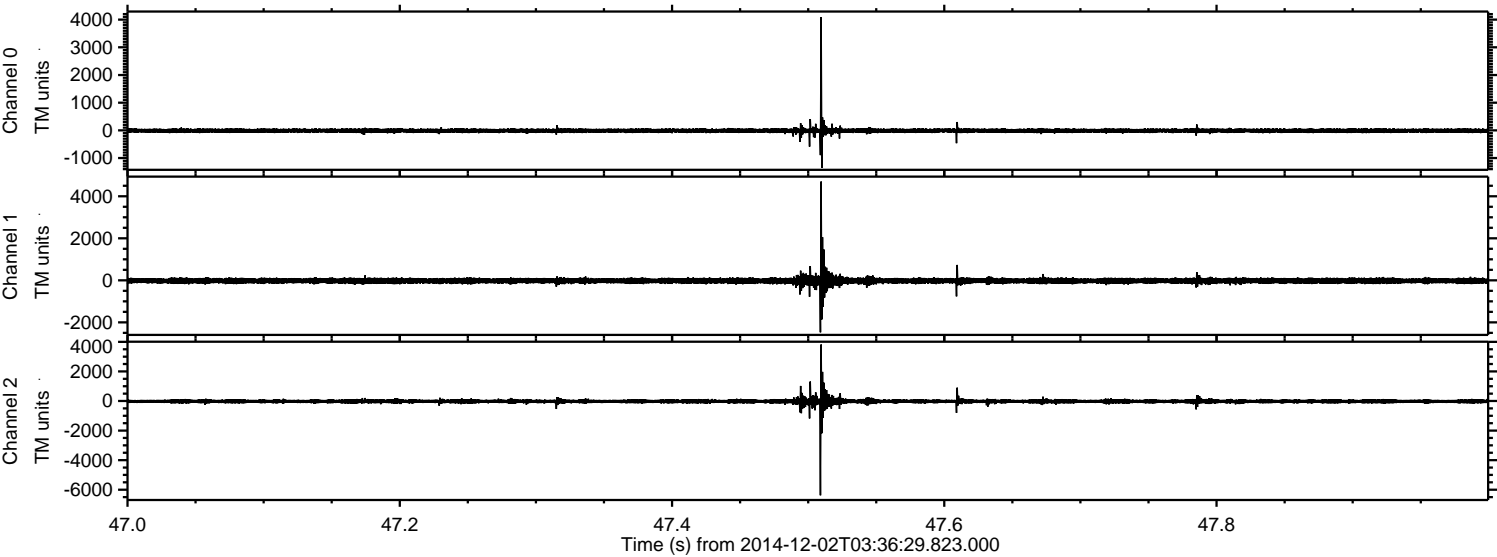
Channel 2
mn: -9041
mx: 5821
 μ : -22.4
 σ : 100.4

Processed Tue Dec 2 04:44:23 2014 by ELM ver.2012-10-06 from 001__elm20141202_033628__dat00.bin



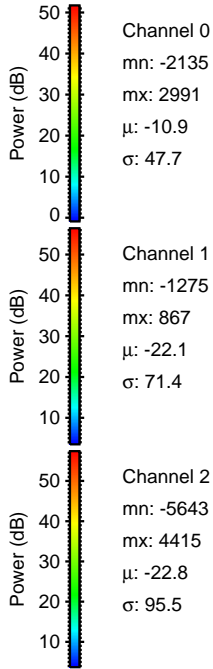
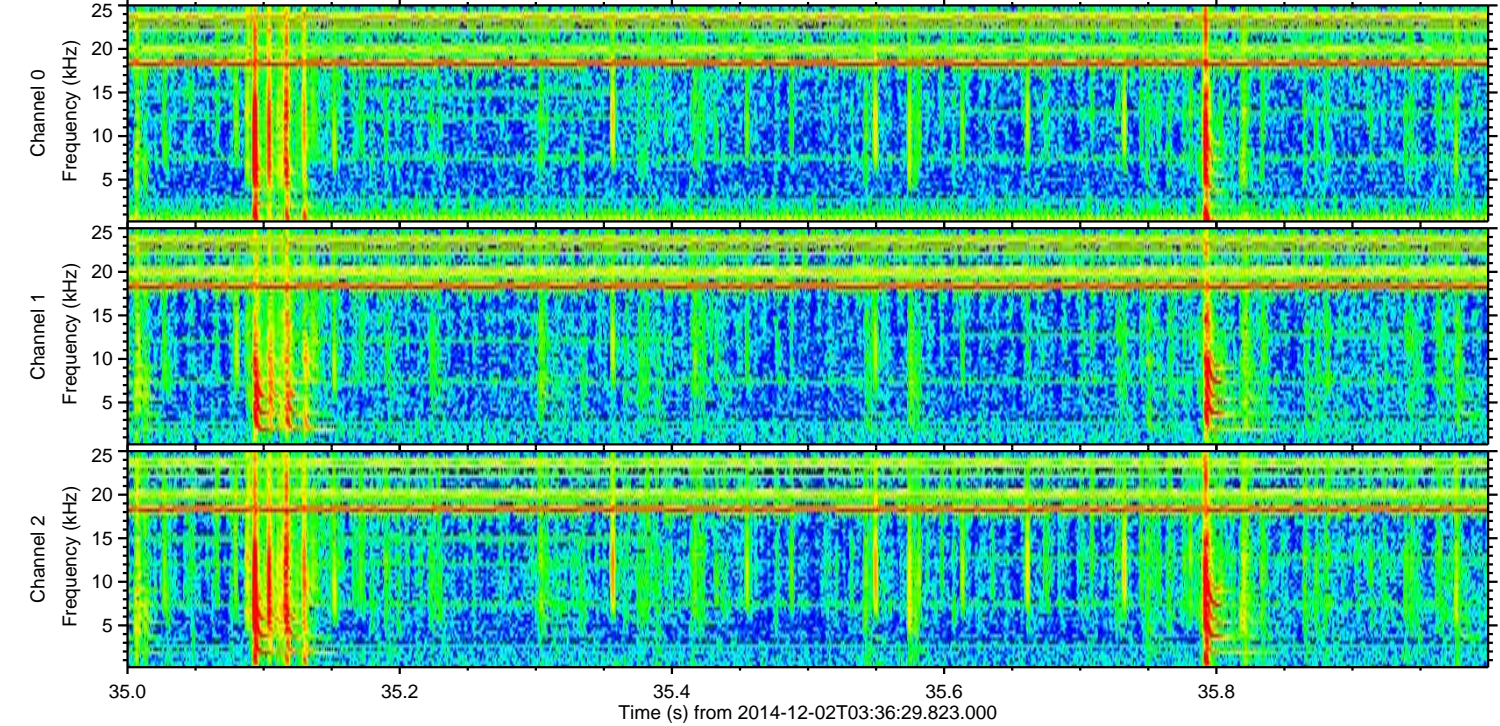
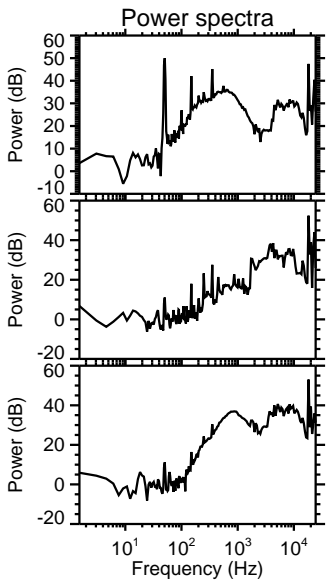
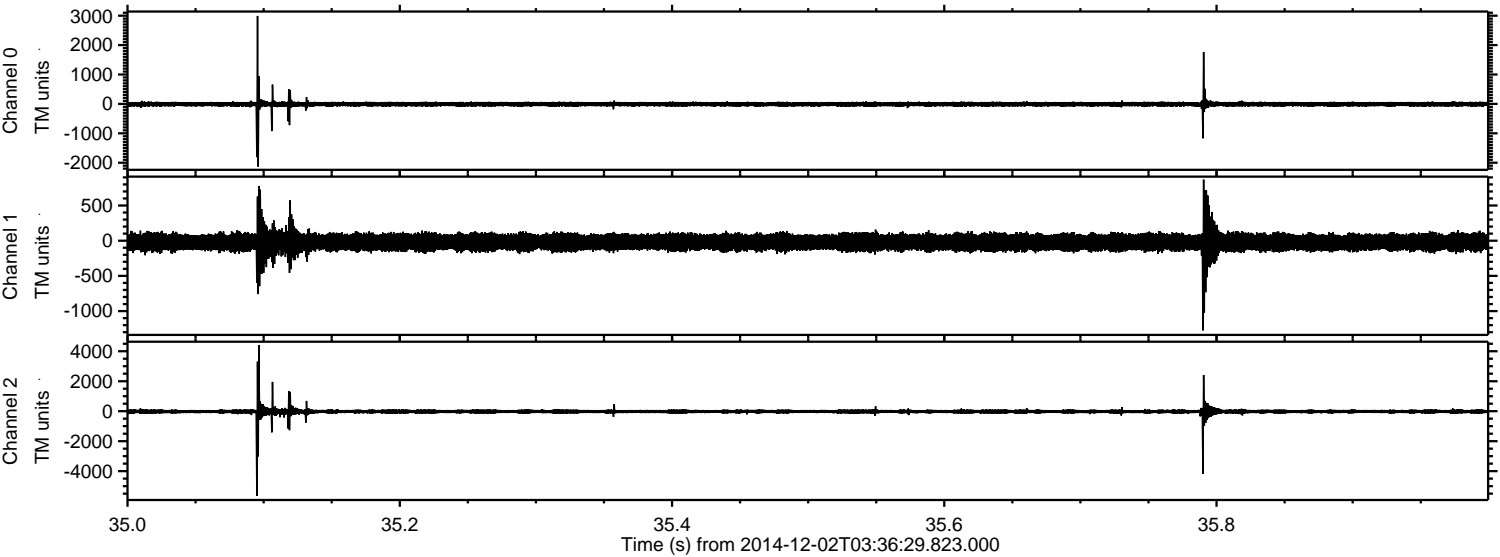
ELMAVAN 3D WAVEFORMS (Measured data sampled at 50 kHz) 49784 packets of 144 samples from 2014-12-02T03:36:29.823.000. Part 48/144

Processed Tue Dec 2 04:44:24 2014 by ELM ver.2012-10-06 from 001__elm20141202_033628__dat00.bin



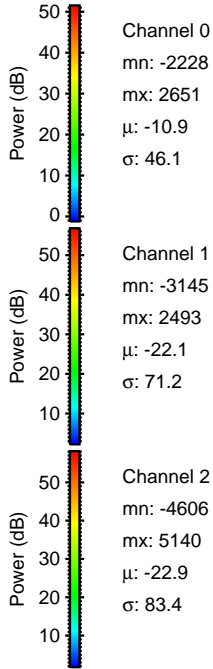
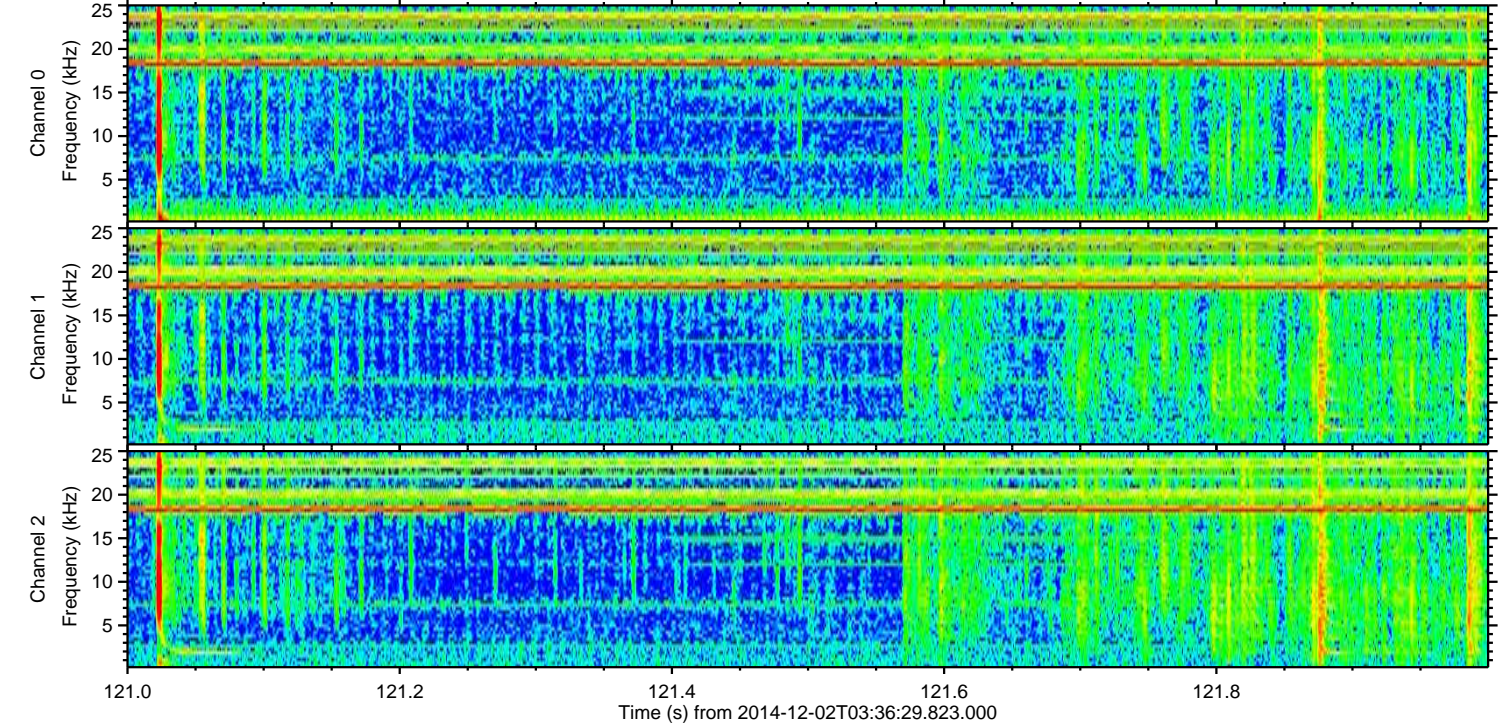
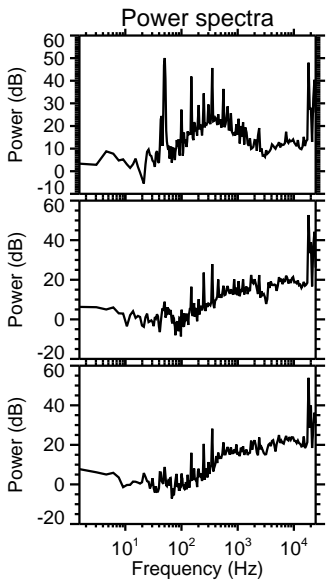
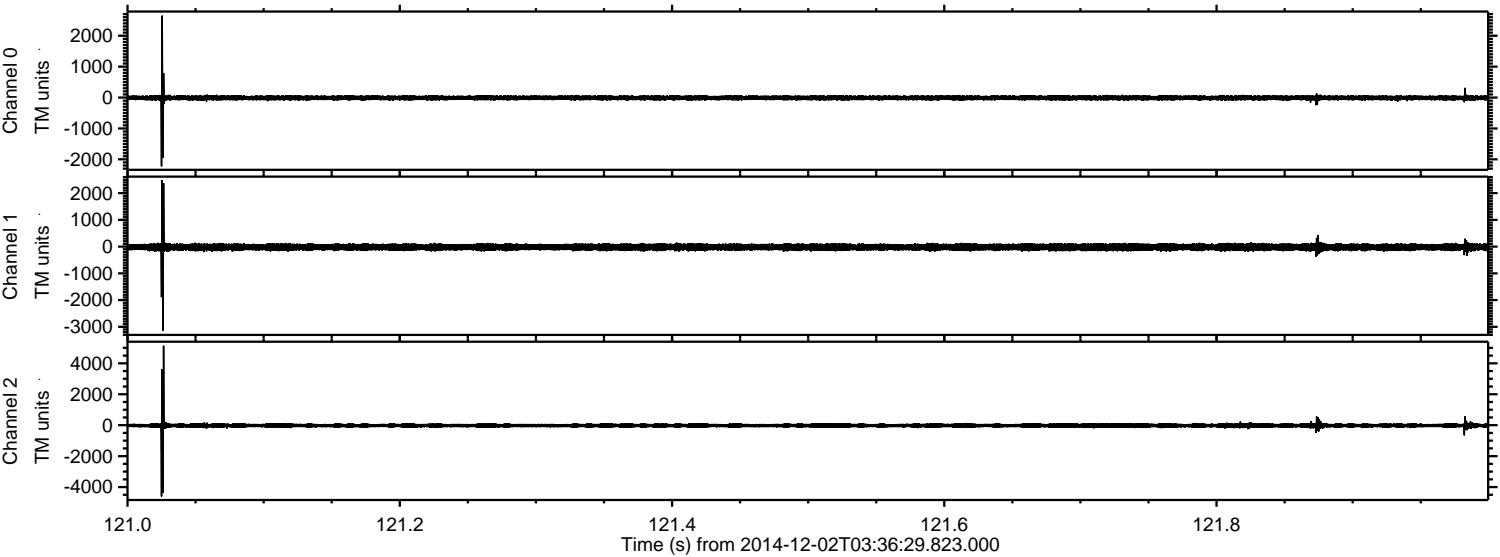
ELMAVAN 3D WAVEFORMS (Measured data sampled at 50 kHz) 49784 packets of 144 samples from 2014-12-02T03:36:29.823.000. Part 36/144

Processed Tue Dec 2 04:44:25 2014 by ELM ver.2012-10-06 from 001__elm20141202_033628__dat00.bin



ELMAVAN 3D WAVEFORMS (Measured data sampled at 50 kHz) 49784 packets of 144 samples from 2014-12-02T03:36:29.823.000. Part 122/144

Processed Tue Dec 2 04:44:26 2014 by ELM ver.2012-10-06 from 001__elm20141202_033628__dat00.bin



Processed Tue Dec 2 04:44:27 2014 by ELM ver.2012-10-06 from 001__elm20141202_033628__dat00.bin

