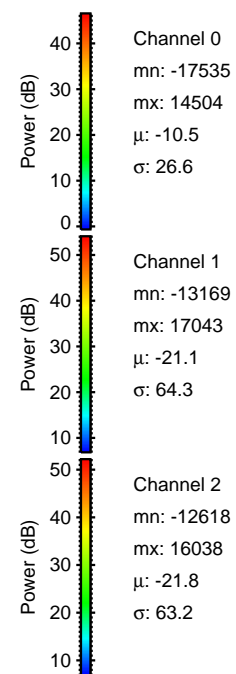
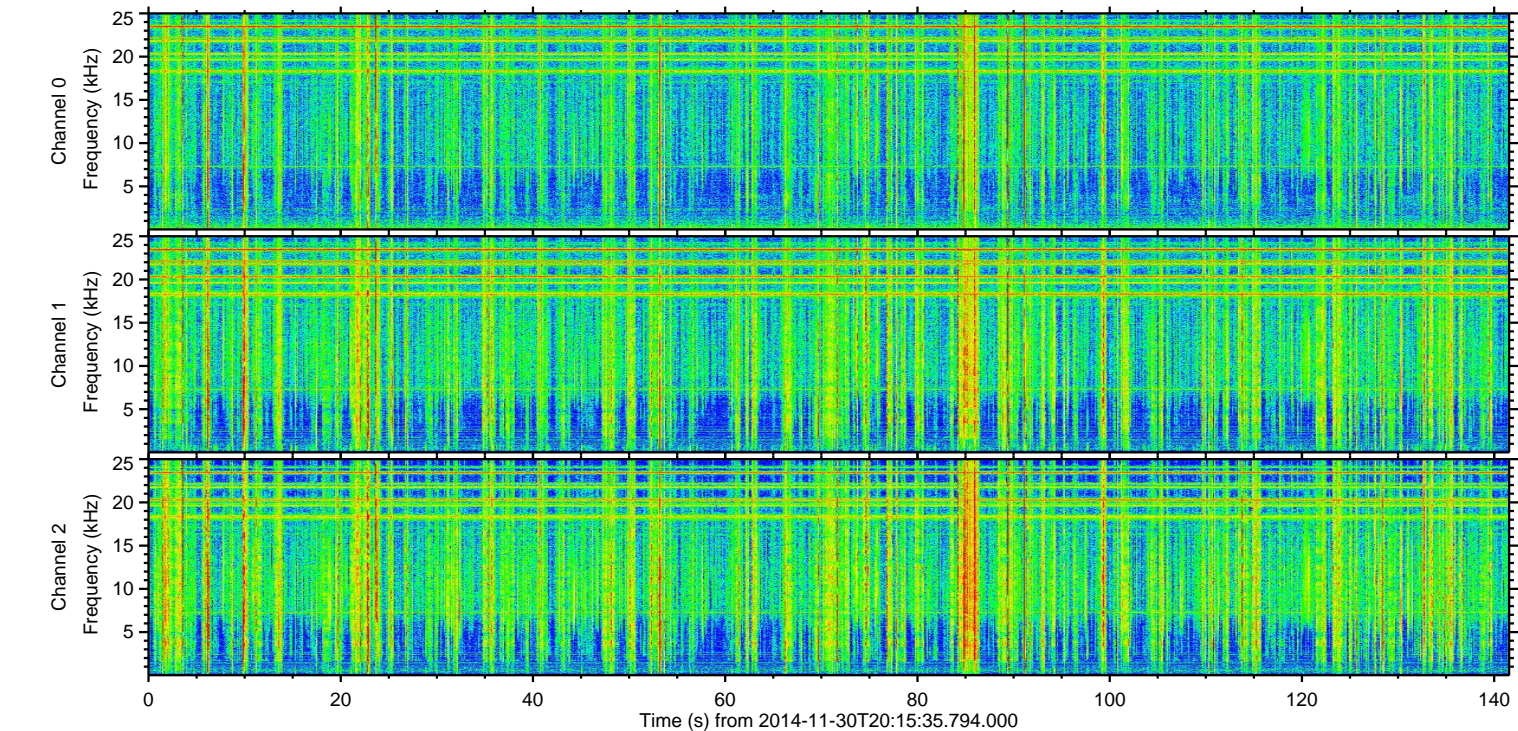
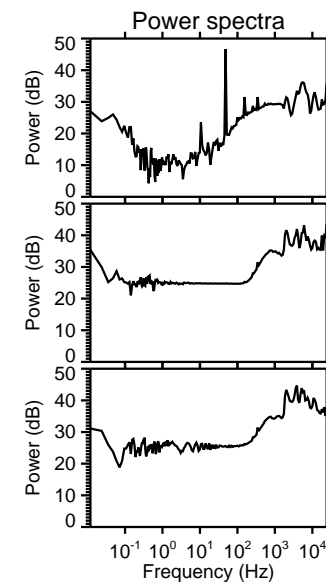
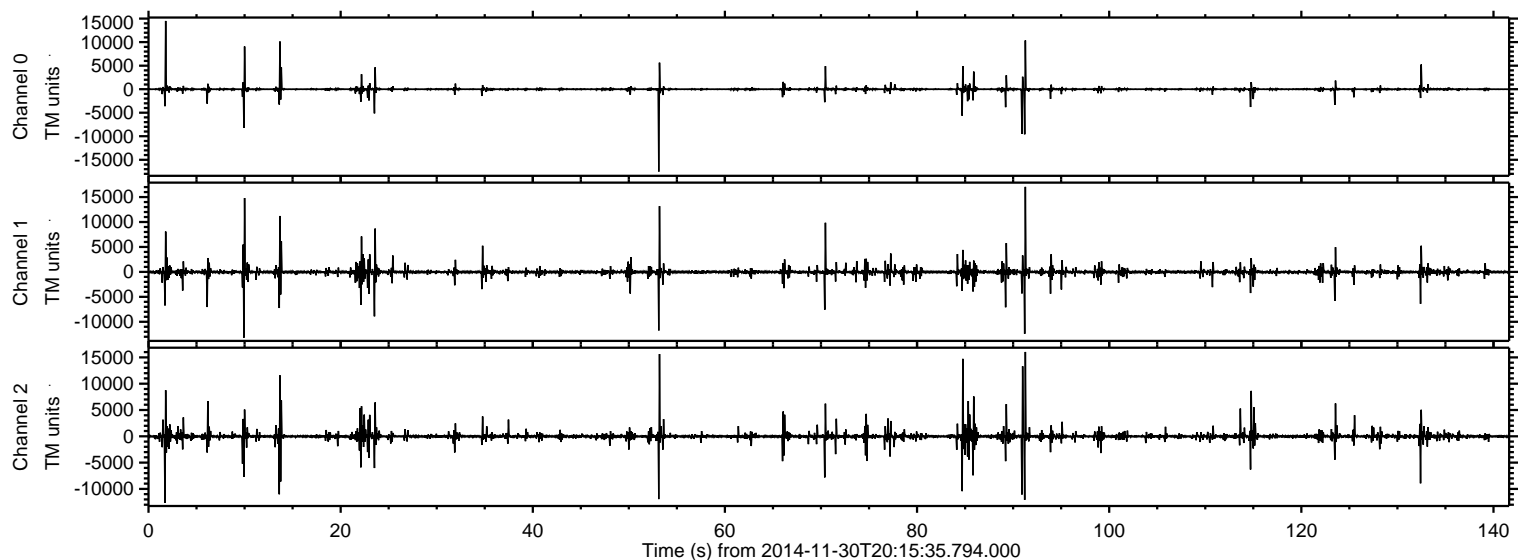


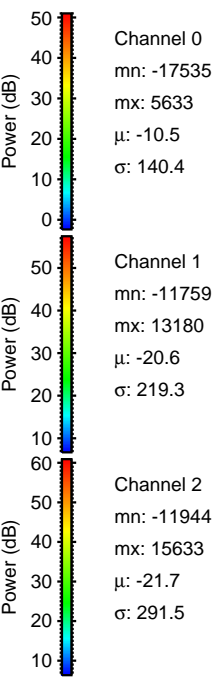
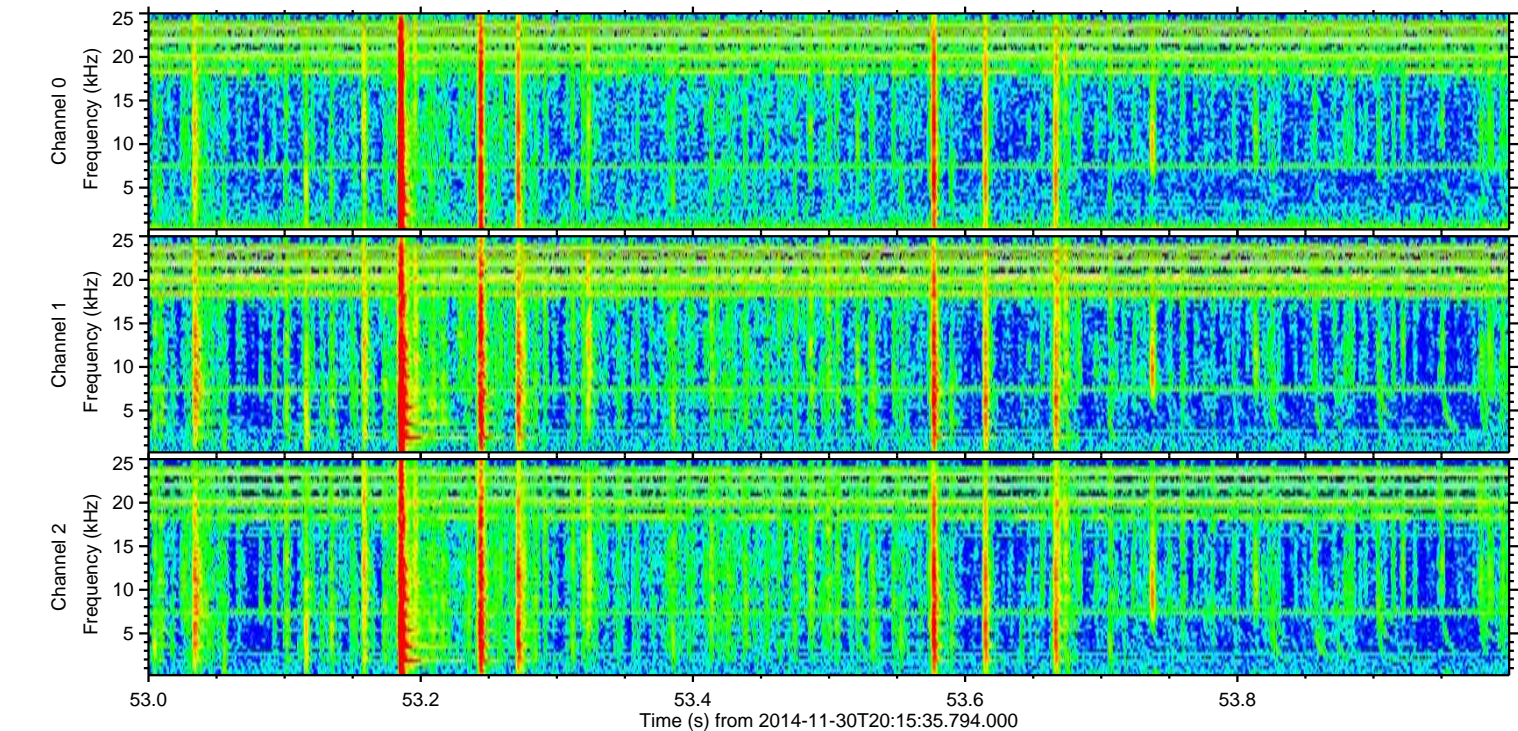
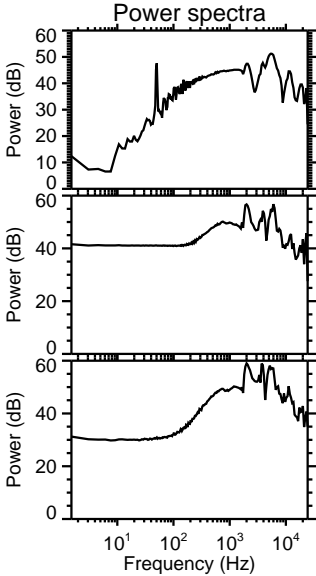
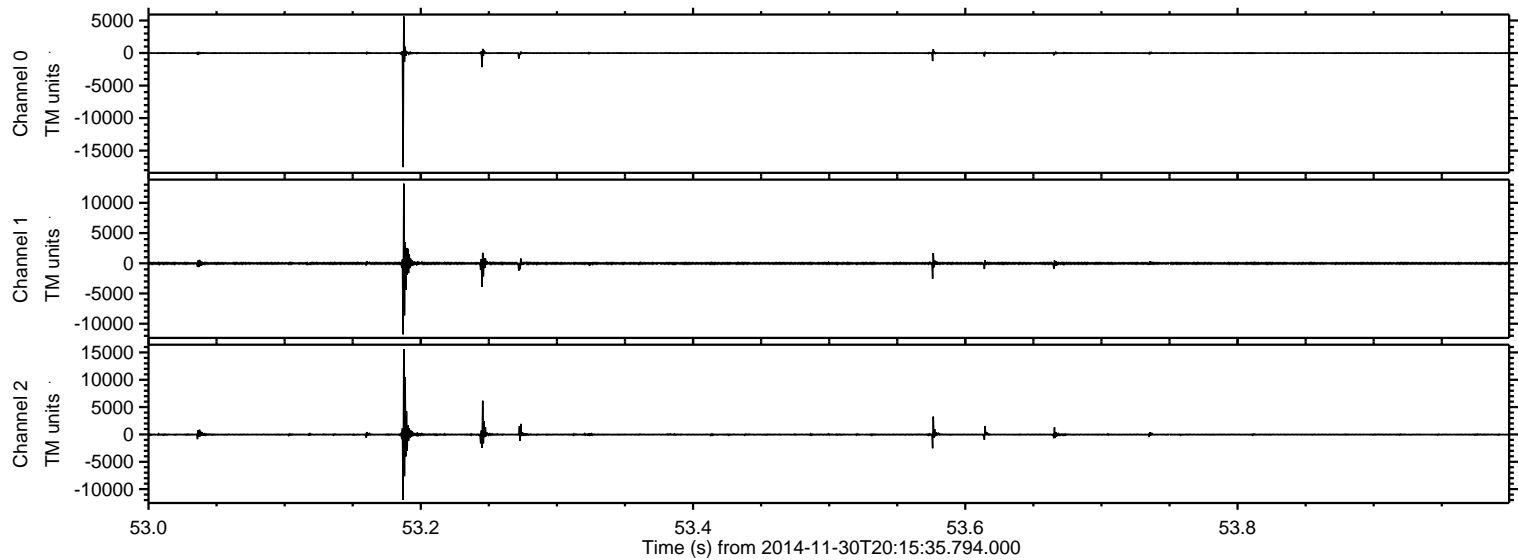
# ELMAVAN 3D WAVEFORMS (Measured data sampled at 50 kHz) 49178 packets of 144 samples from 2014-11-30T20:15:35.794.000.

Processed Sun Nov 30 21:43:12 2014 by ELM ver.2012-10-06 from 001\_\_elm20141130\_201534\_\_dat00.bin



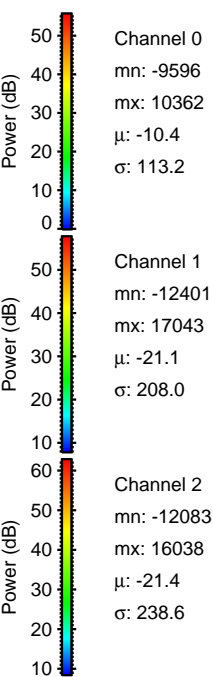
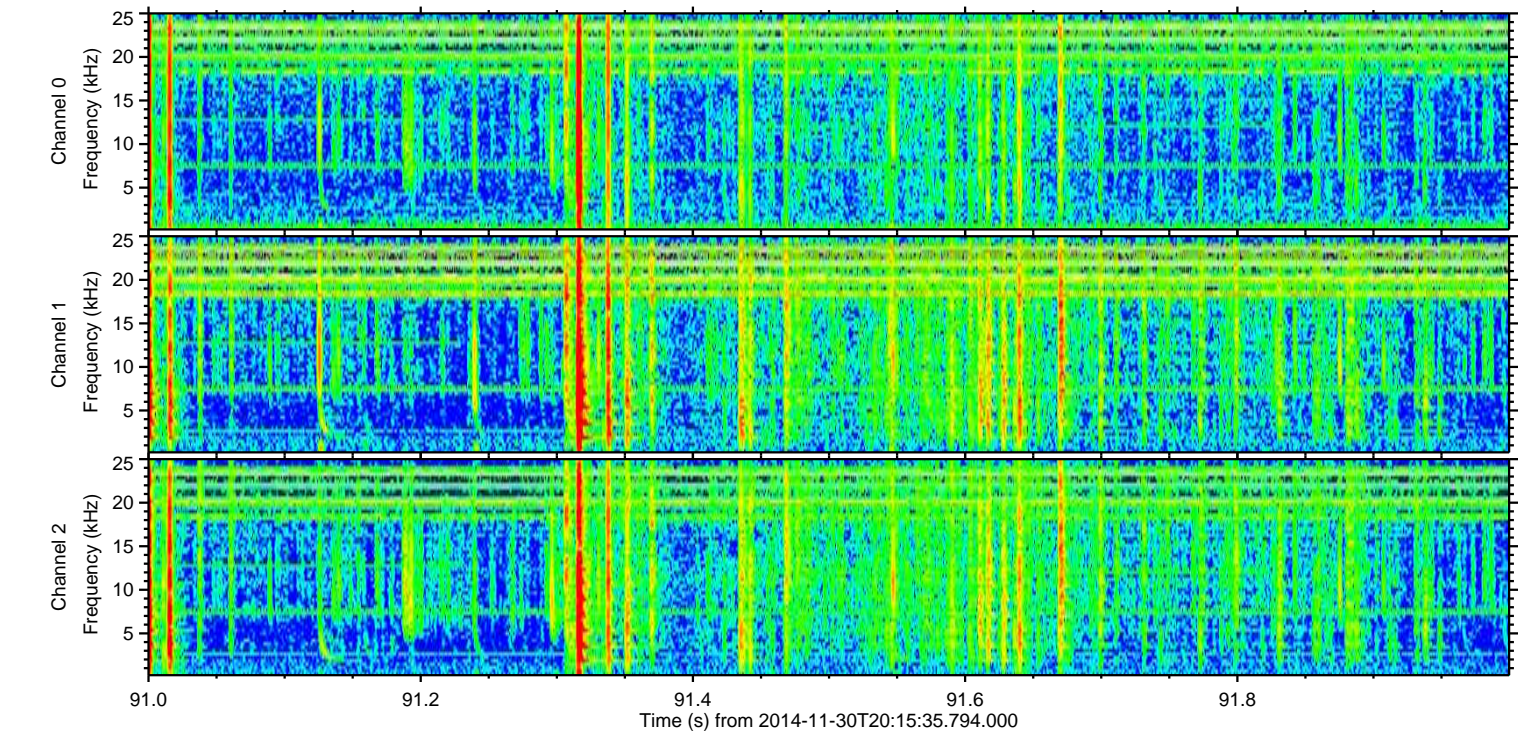
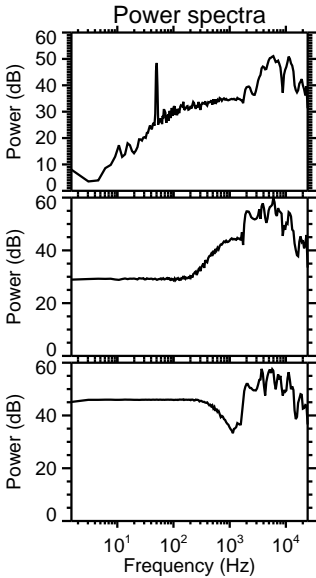
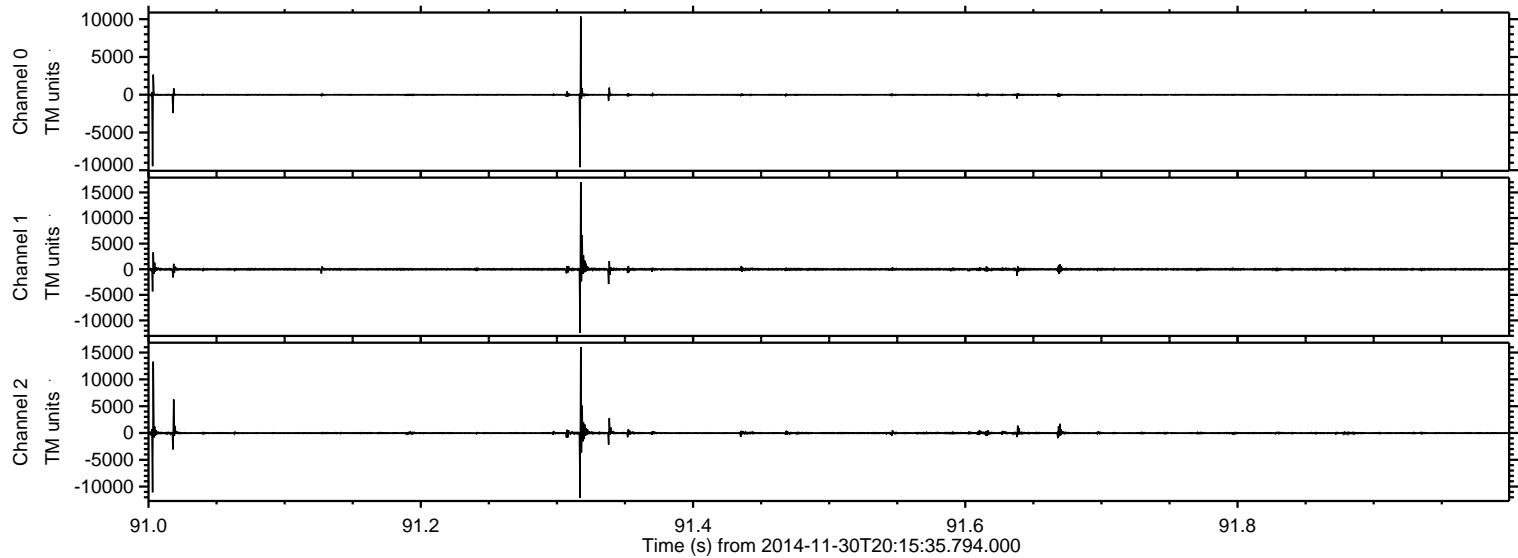


Processed Sun Nov 30 21:43:29 2014 by ELM ver.2012-10-06 from 001\_elm20141130\_201534\_\_dat00.bin



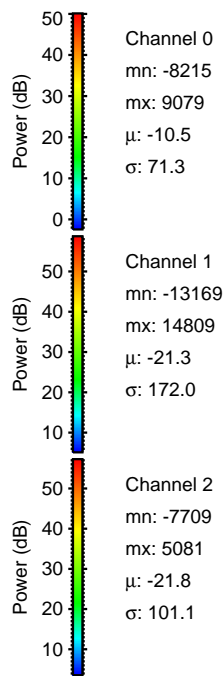
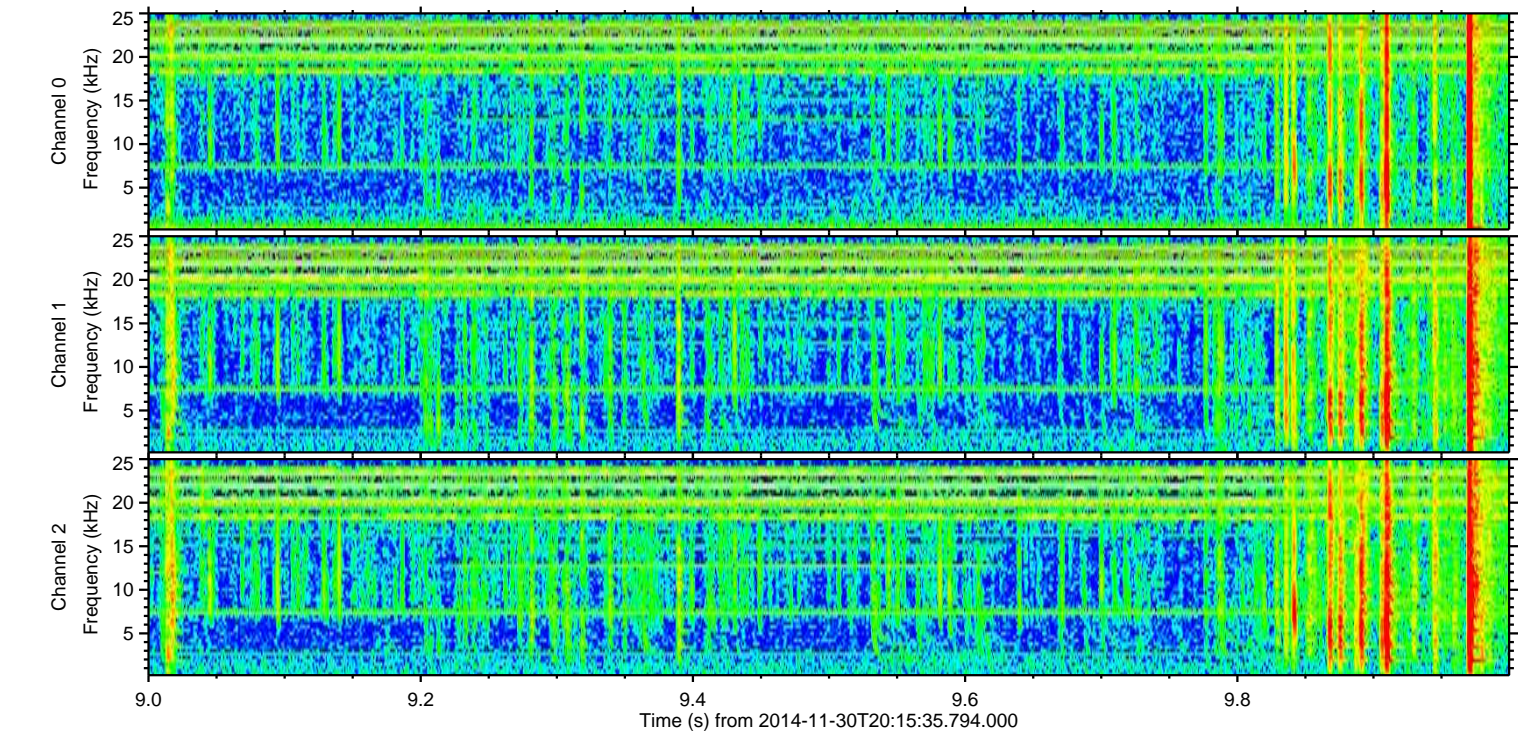
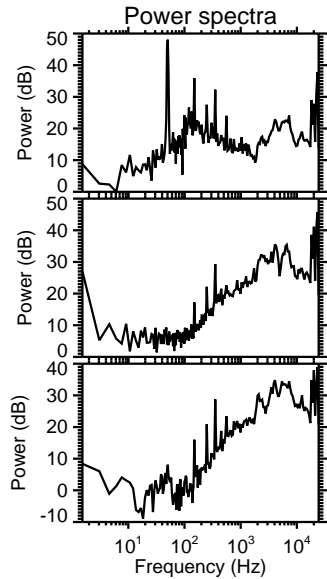
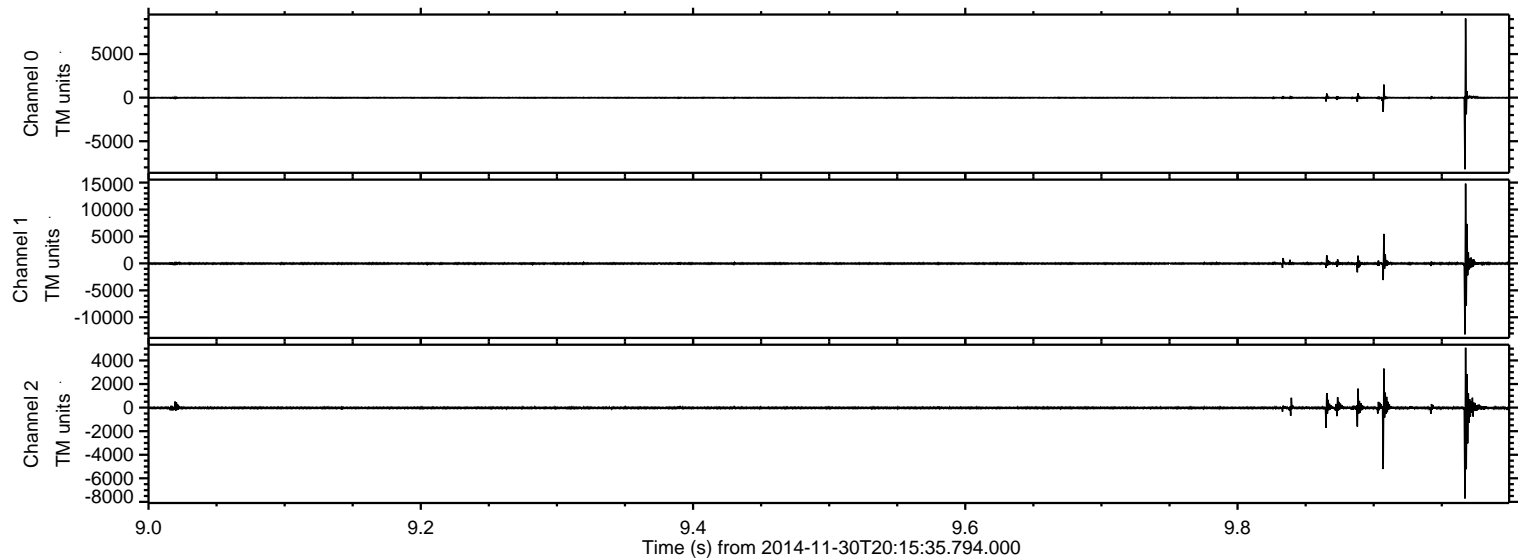


Processed Sun Nov 30 21:43:30 2014 by ELM ver.2012-10-06 from 001\_\_elm20141130\_201534\_\_dat00.bin



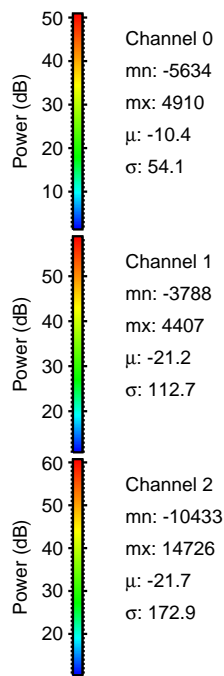
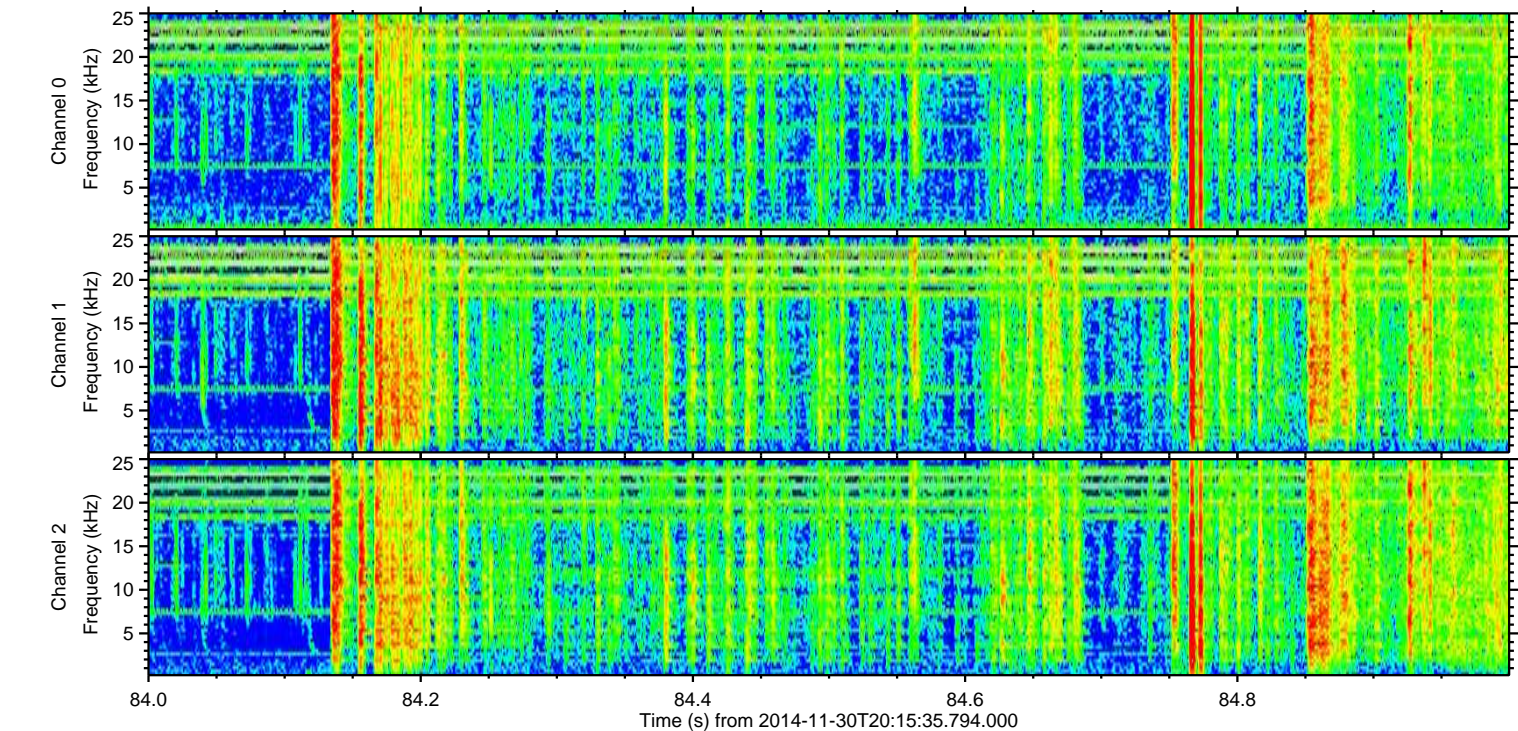
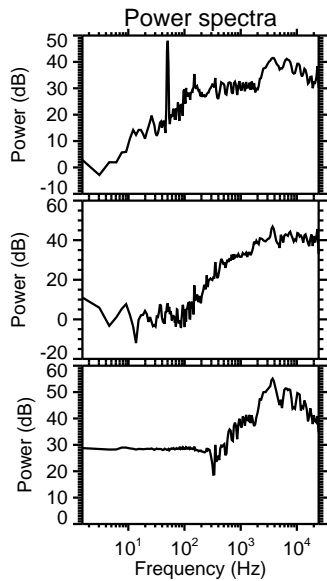
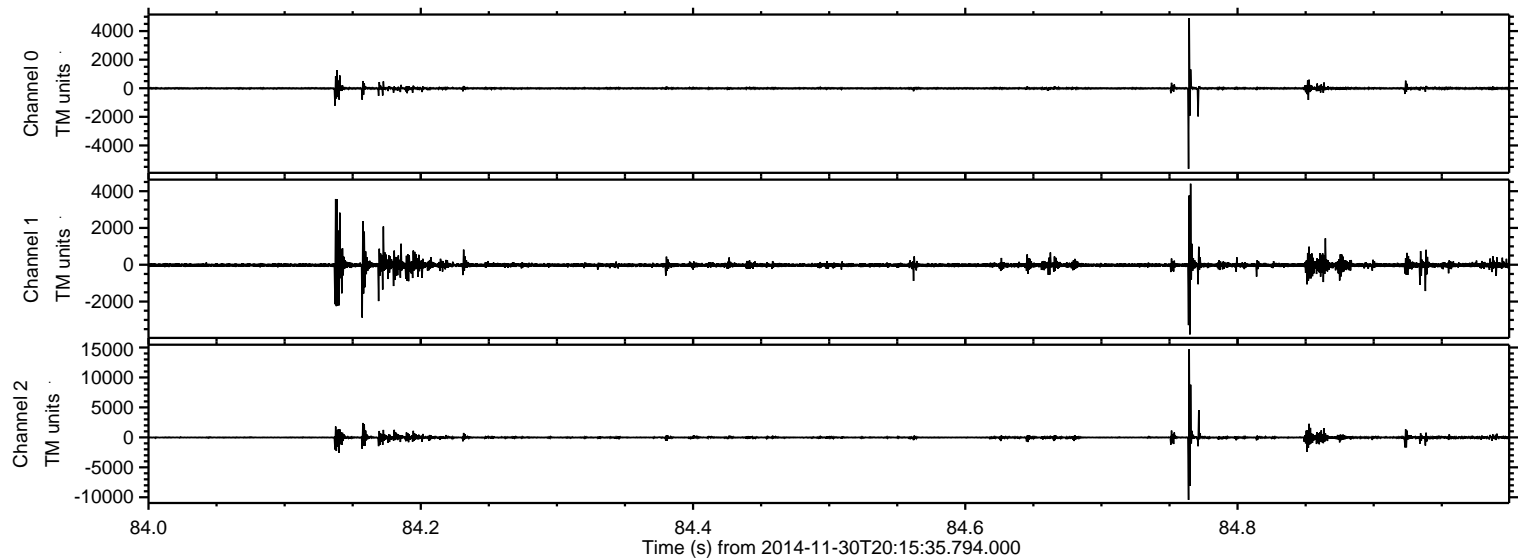


Processed Sun Nov 30 21:43:31 2014 by ELM ver.2012-10-06 from 001\_\_elm20141130\_201534\_\_dat00.bin





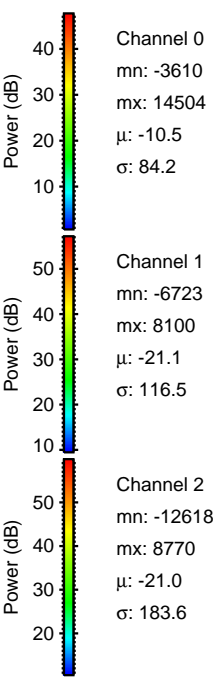
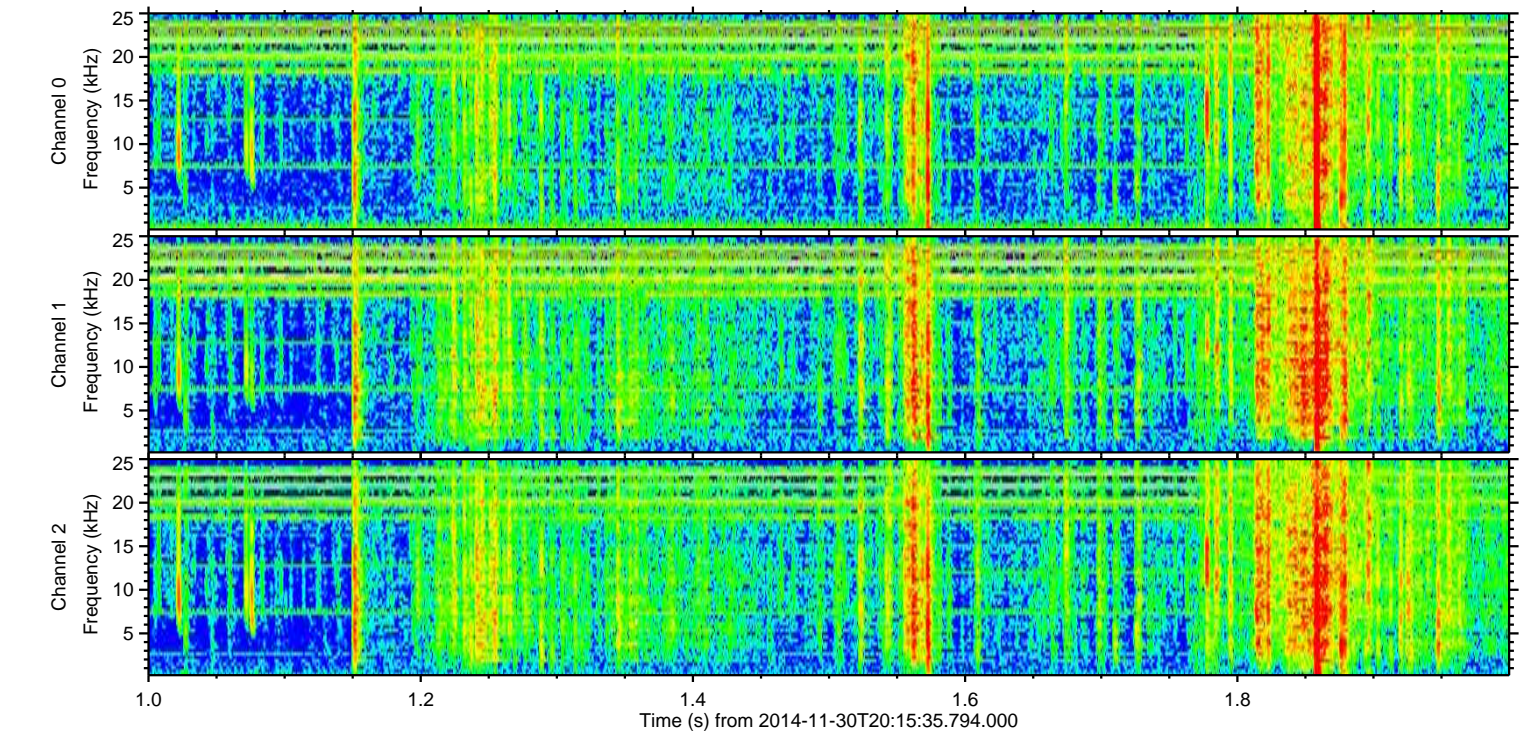
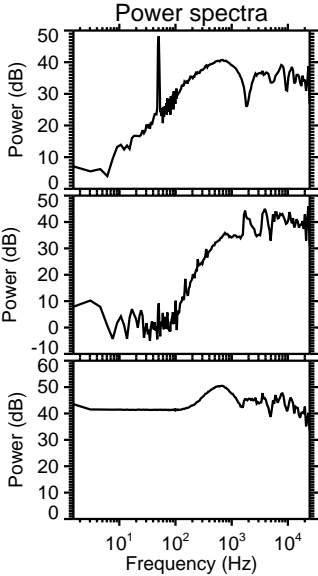
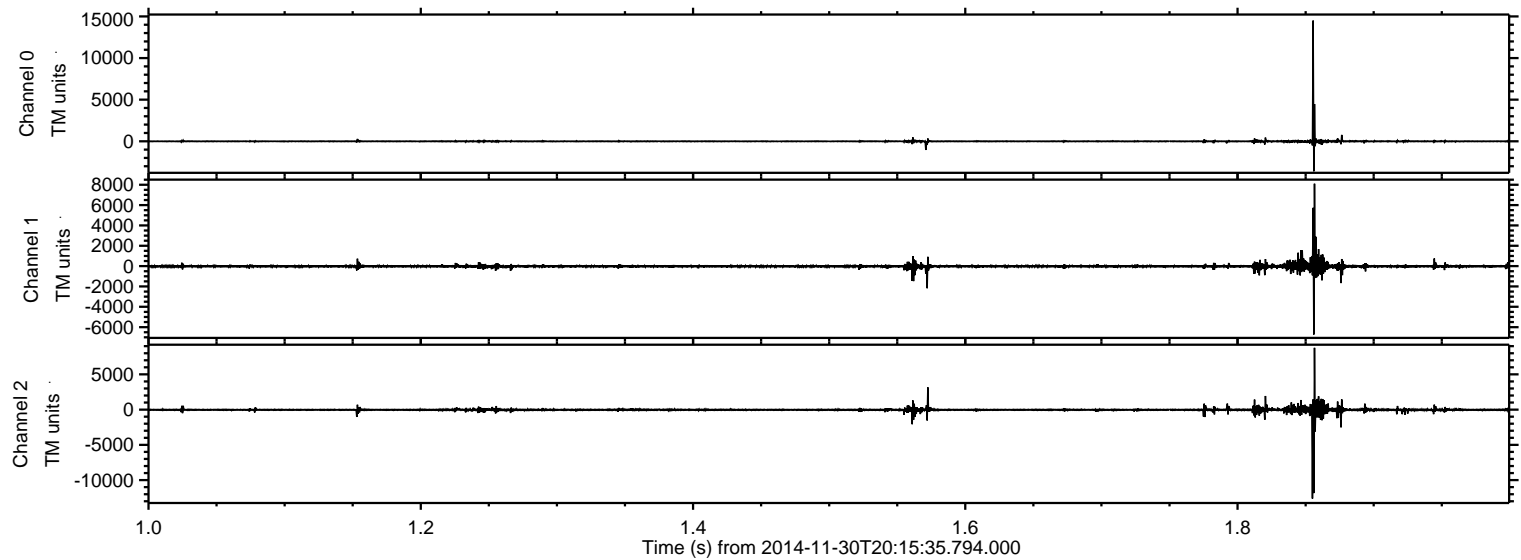
Processed Sun Nov 30 21:43:32 2014 by ELM ver.2012-10-06 from 001\_\_elm20141130\_201534\_\_dat00.bin



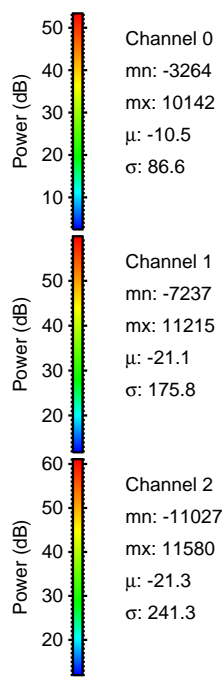
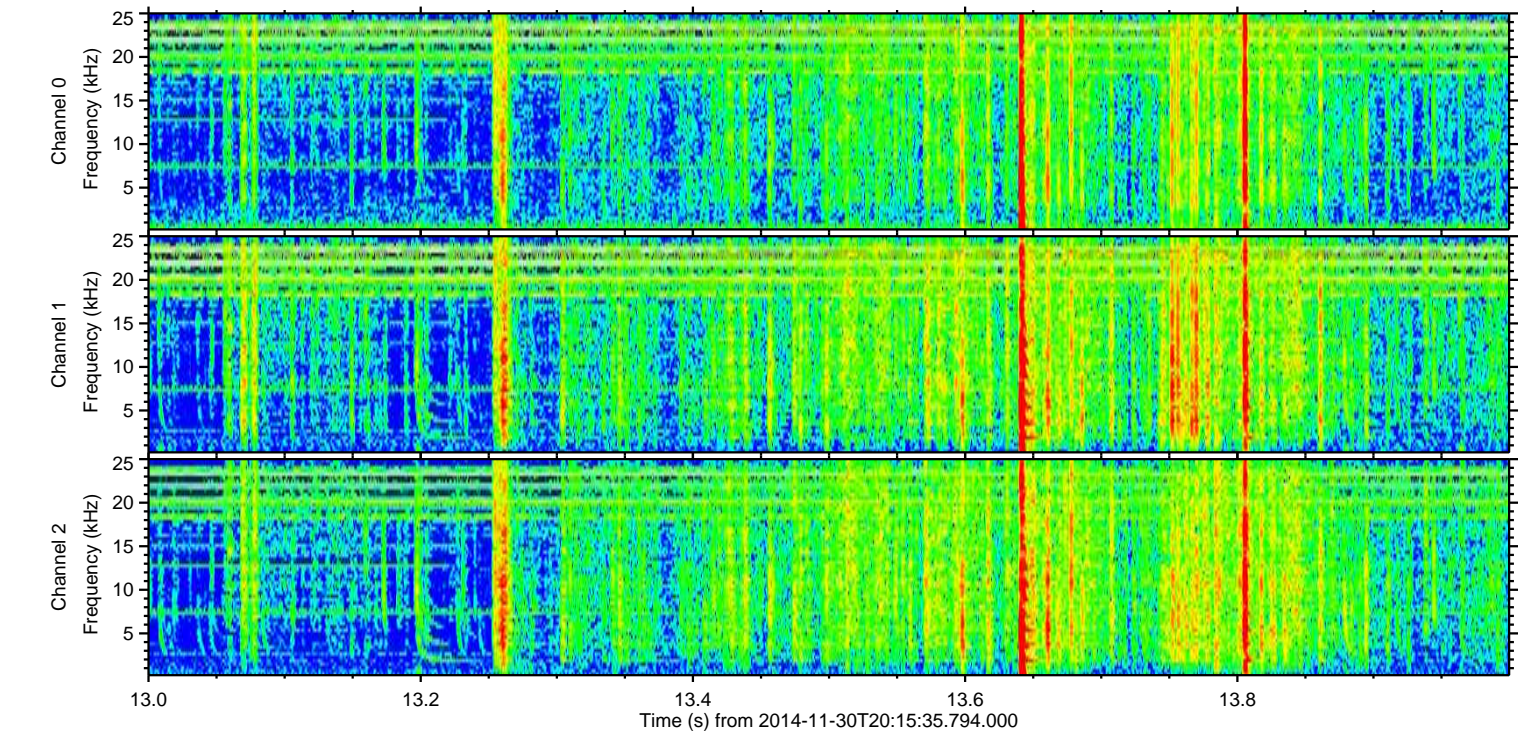
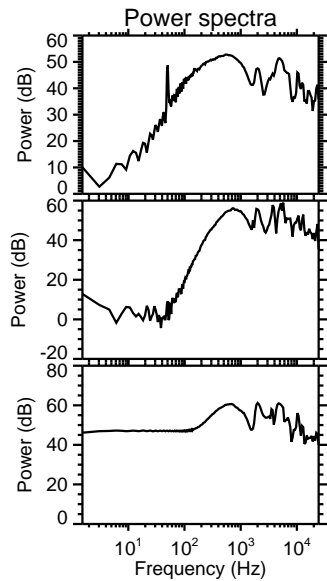
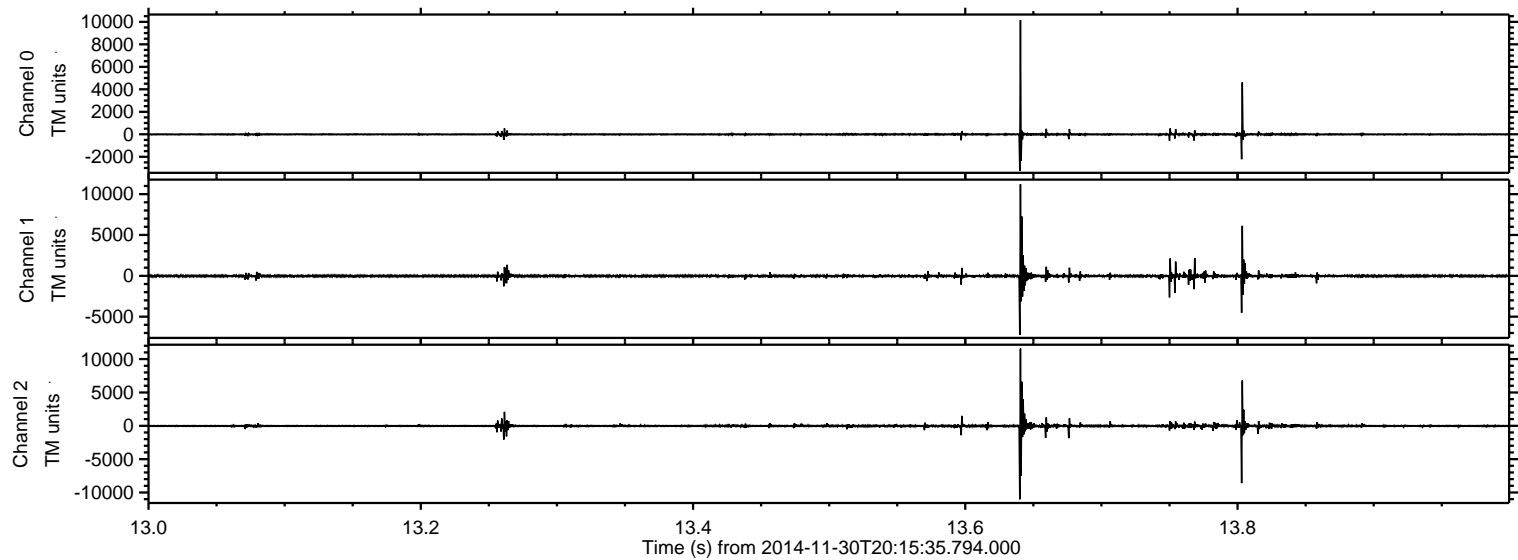


ELMAVAN 3D WAVEFORMS (Measured data sampled at 50 kHz) 49178 packets of 144 samples from 2014-11-30T20:15:35.794.000. Part 2/142

Processed Sun Nov 30 21:43:33 2014 by ELM ver.2012-10-06 from 001\_\_elm20141130\_201534\_\_dat00.bin

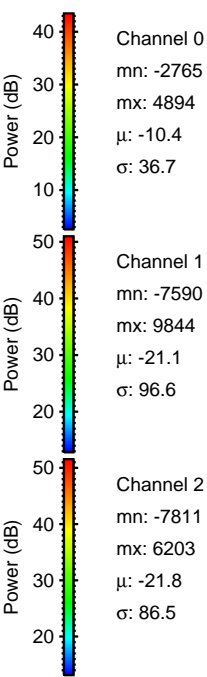
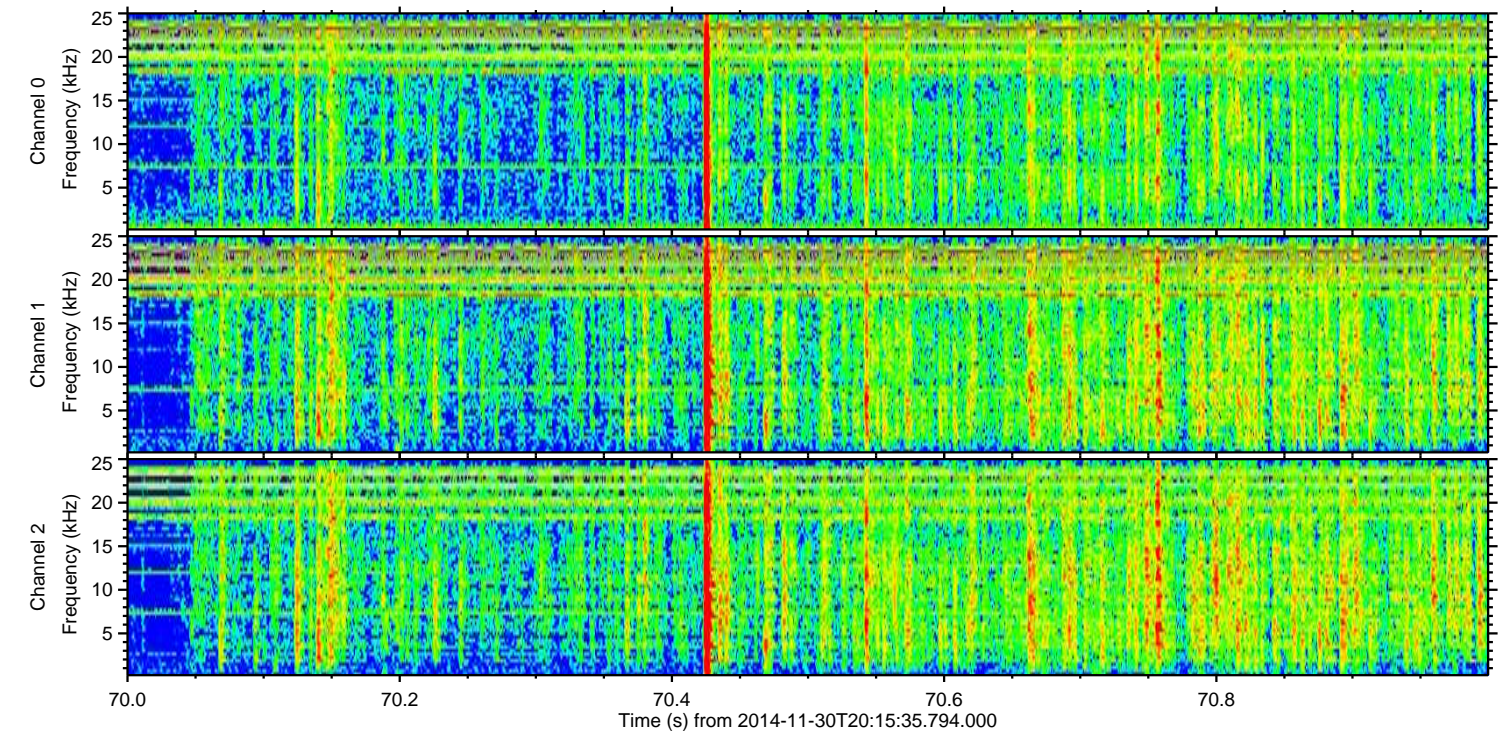
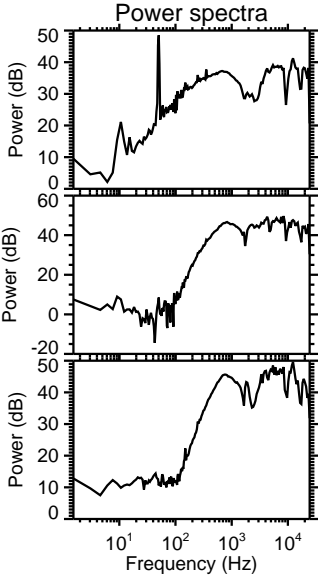
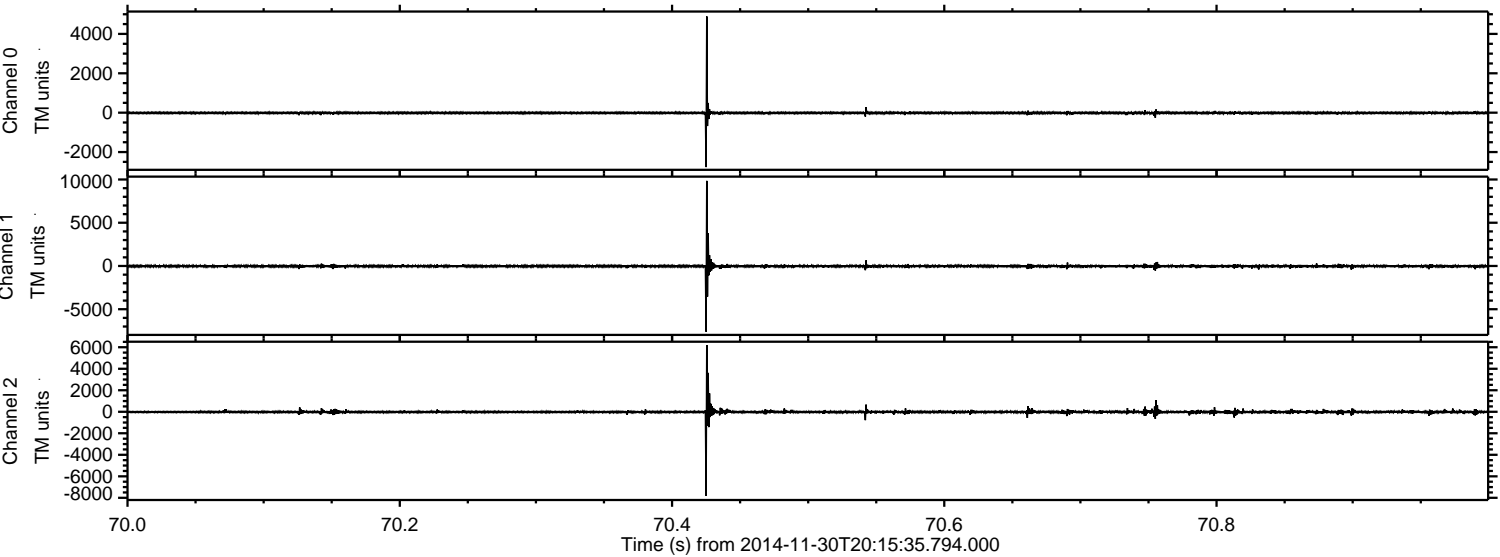


Processed Sun Nov 30 21:43:34 2014 by ELM ver.2012-10-06 from 001\_\_elm20141130\_201534\_\_dat00.bin





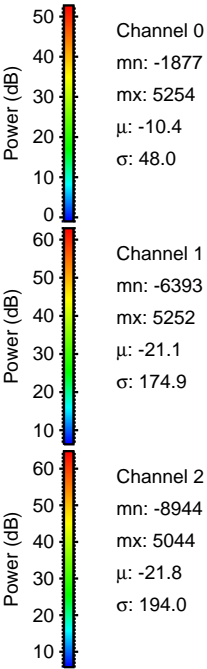
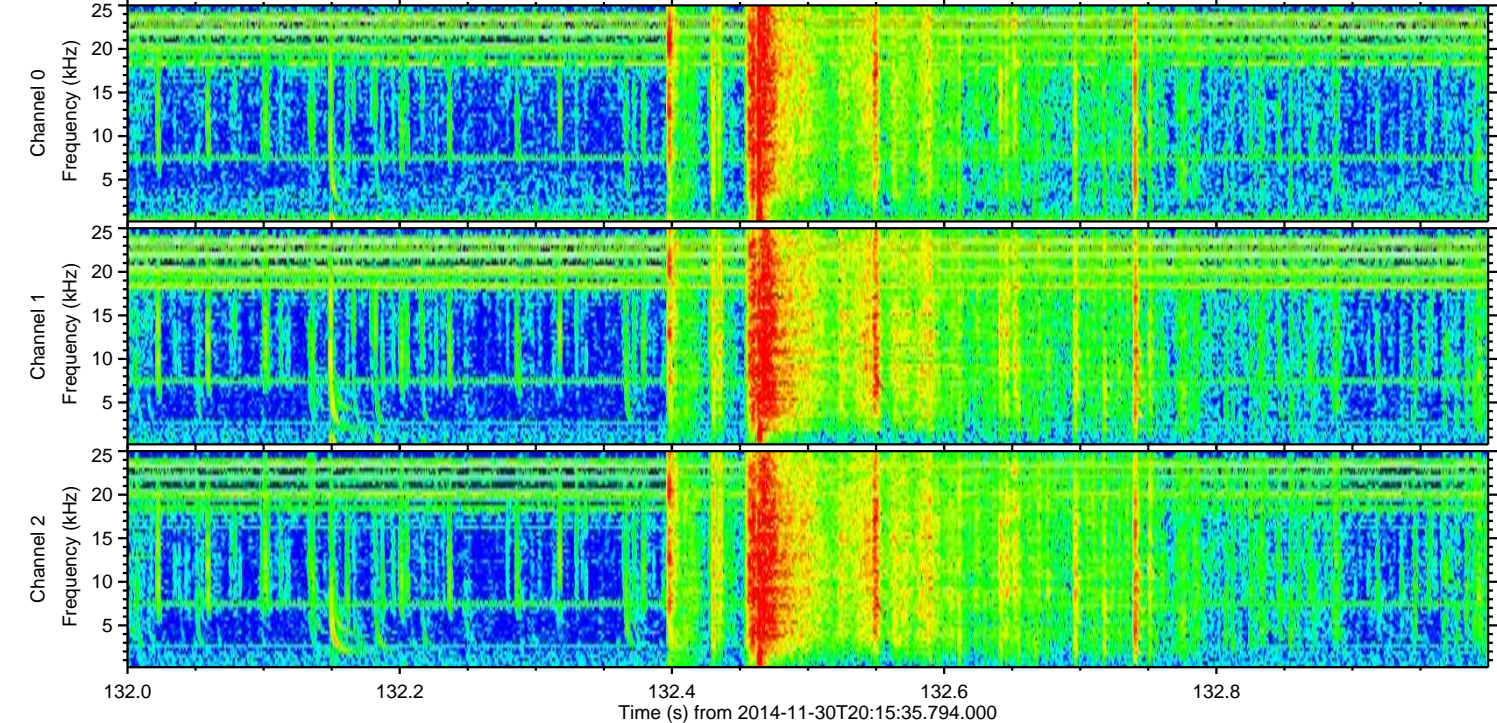
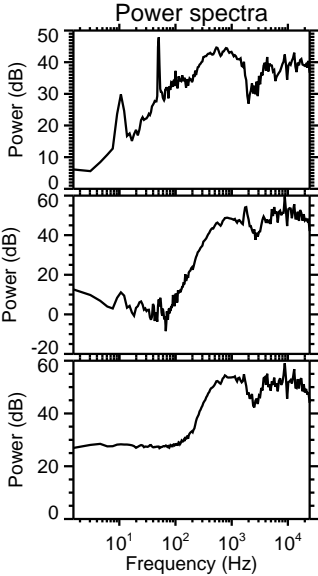
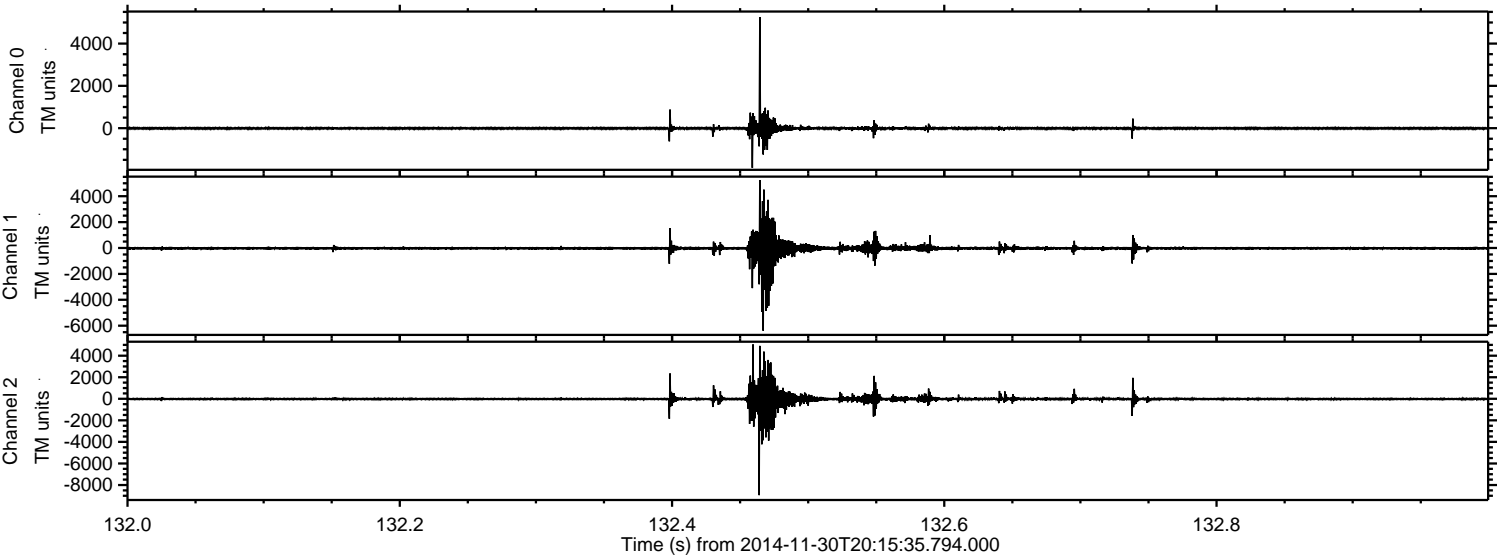
Processed Sun Nov 30 21:43:35 2014 by ELM ver.2012-10-06 from 001\_\_elm20141130\_201534\_\_dat00.bin





ELMAVAN 3D WAVEFORMS (Measured data sampled at 50 kHz) 49178 packets of 144 samples from 2014-11-30T20:15:35.794.000. Part 133/142

Processed Sun Nov 30 21:43:36 2014 by ELM ver.2012-10-06 from 001\_\_elm20141130\_201534\_\_dat00.bin



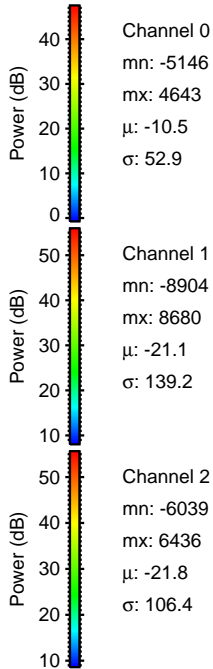
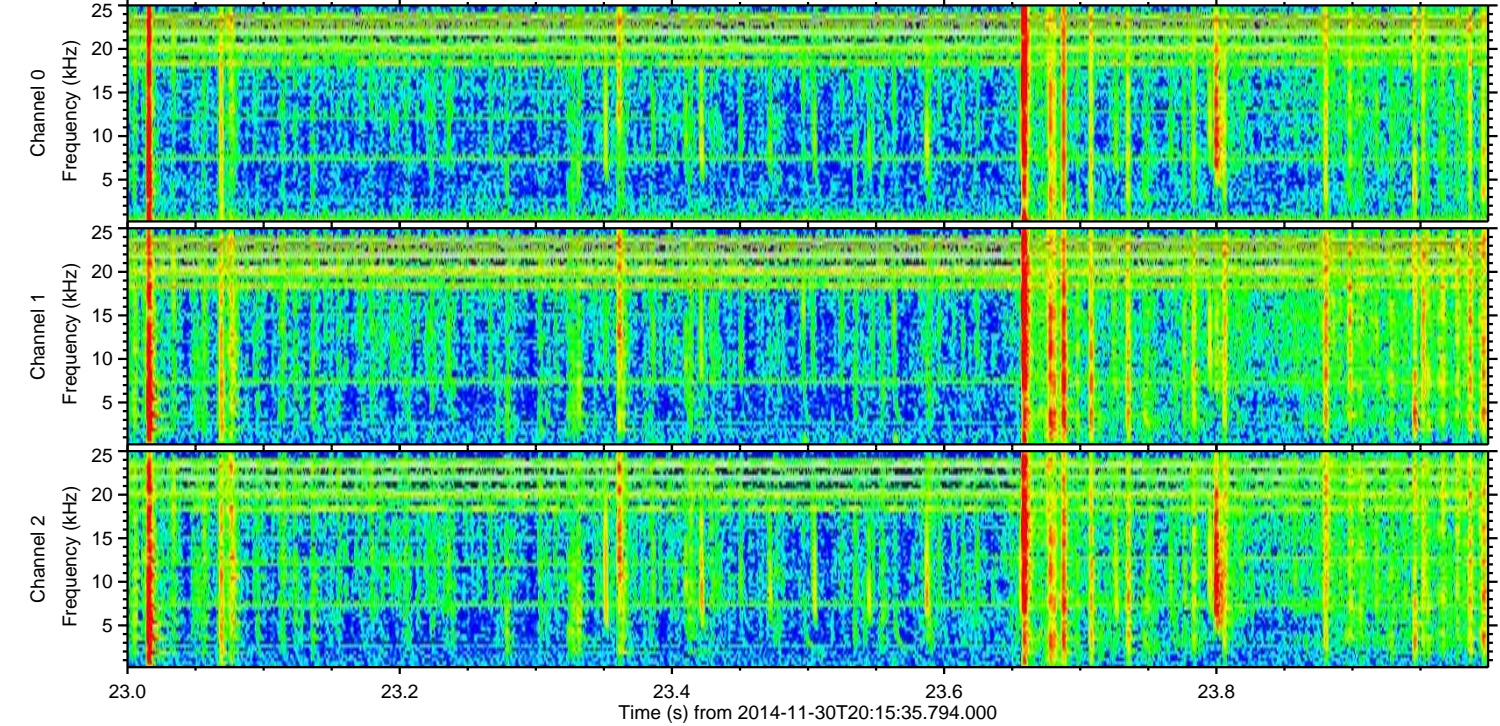
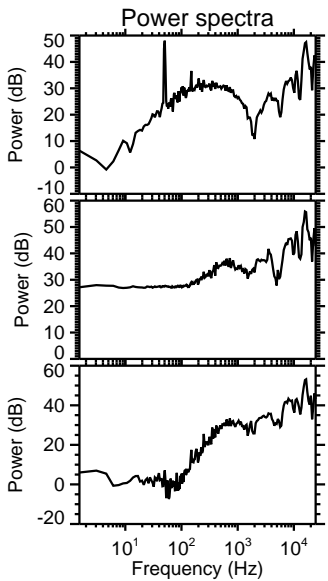
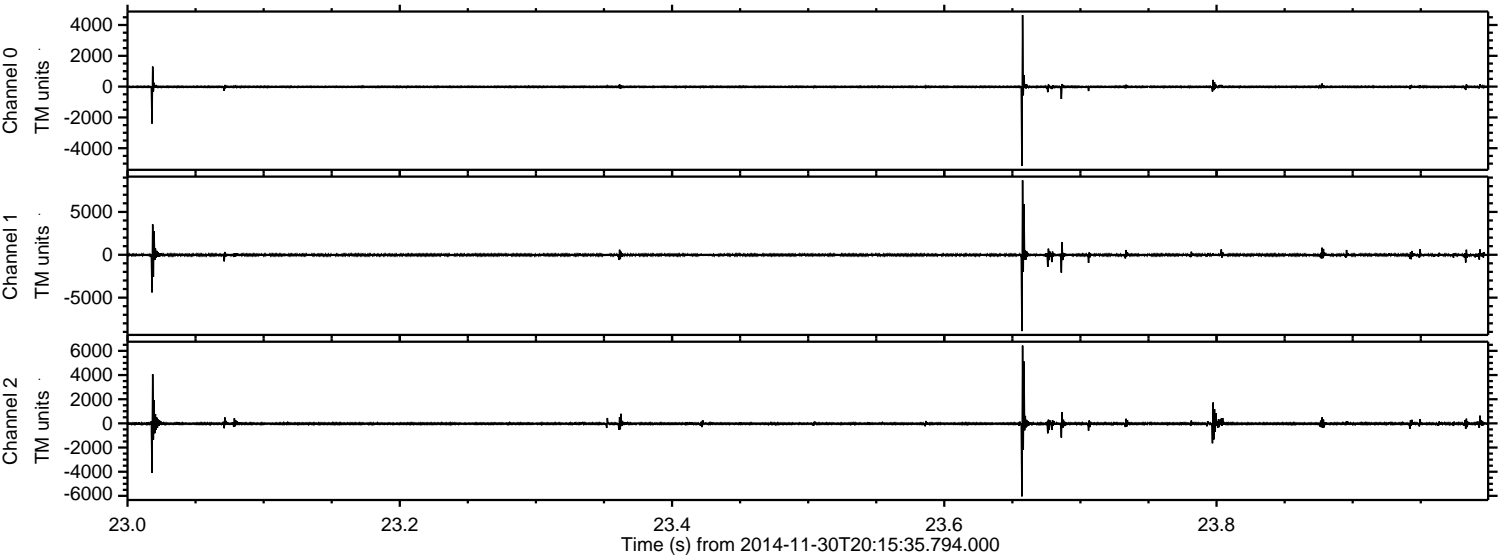
Channel 0  
mn: -1877  
mx: 5254  
 $\mu$ : -10.4  
 $\sigma$ : 48.0

Channel 1  
mn: -6393  
mx: 5252  
 $\mu$ : -21.1  
 $\sigma$ : 174.9

Channel 2  
mn: -8944  
mx: 5044  
 $\mu$ : -21.8  
 $\sigma$ : 194.0



Processed Sun Nov 30 21:43:37 2014 by ELM ver.2012-10-06 from 001\_\_elm20141130\_201534\_\_dat00.bin





Processed Sun Nov 30 21:43:38 2014 by ELM ver.2012-10-06 from 001\_\_elm20141130\_201534\_\_dat00.bin

