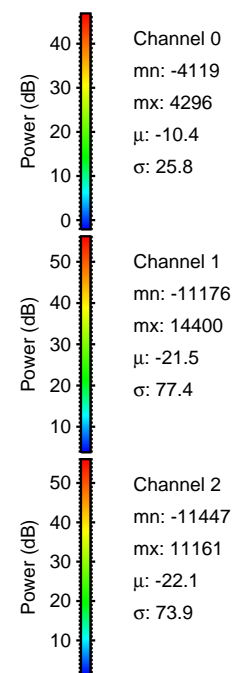
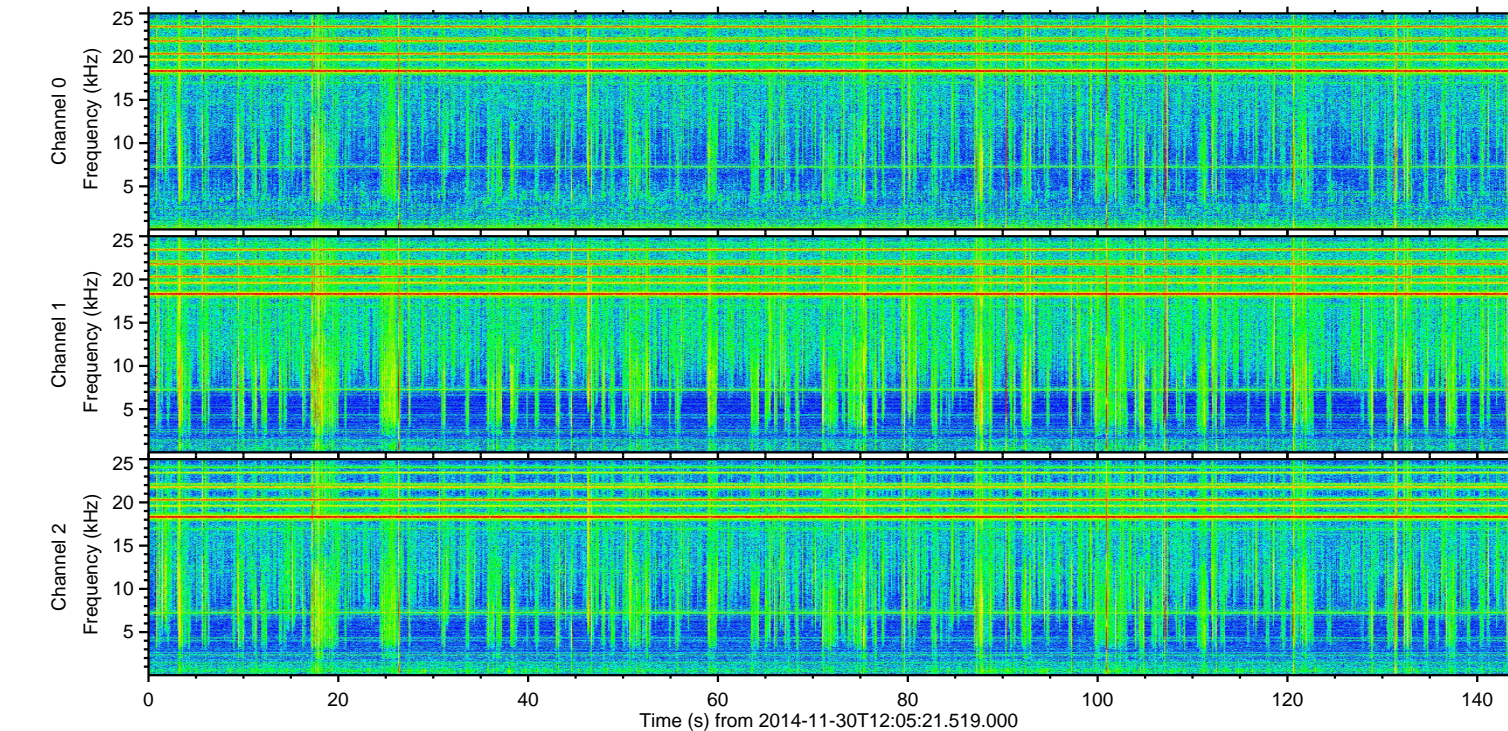
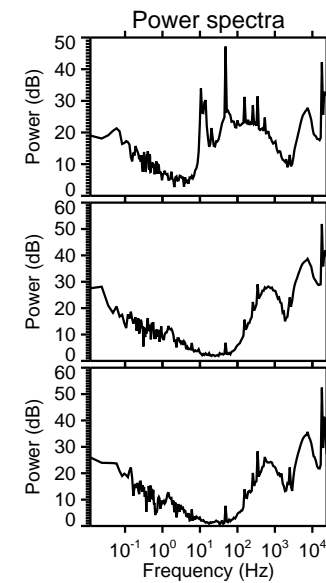
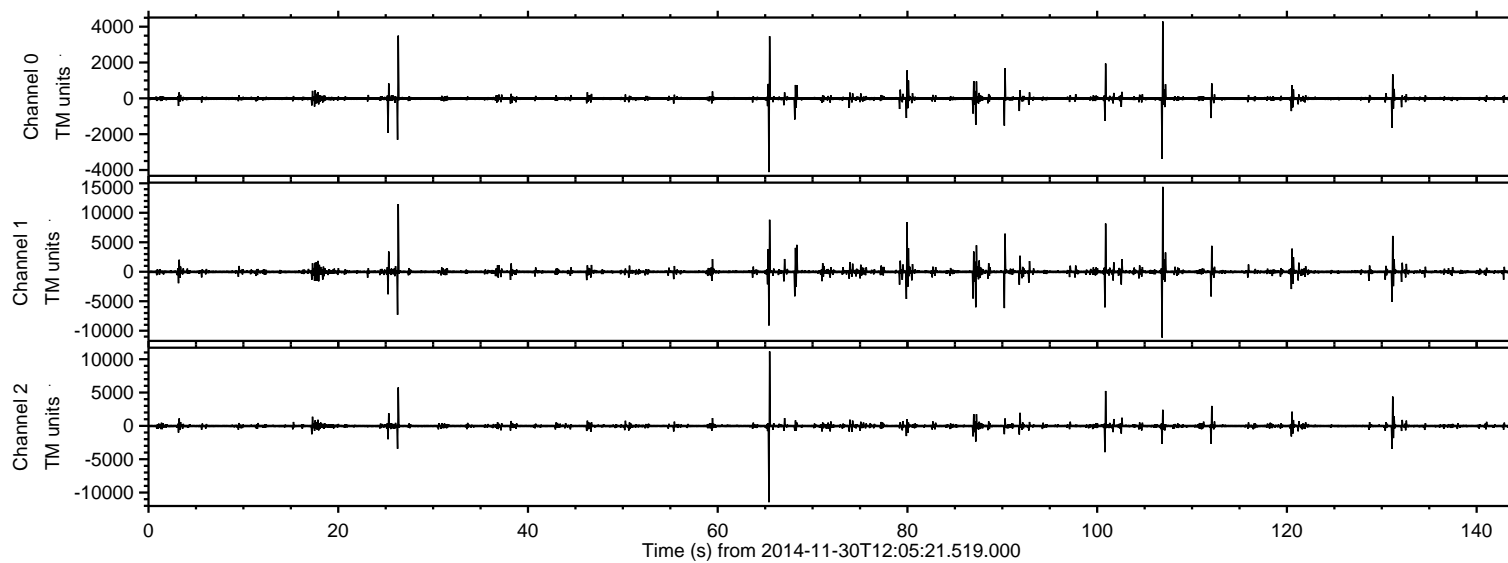


# ELMAVAN 3D WAVEFORMS (Measured data sampled at 50 kHz) 49800 packets of 144 samples from 2014-11-30T12:05:21.519.000.

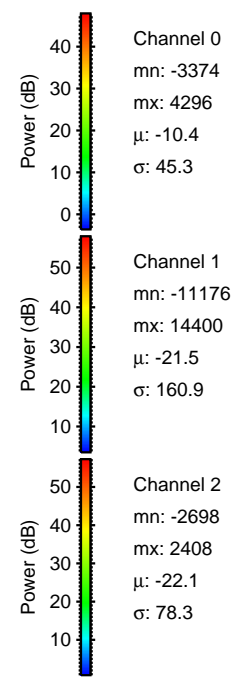
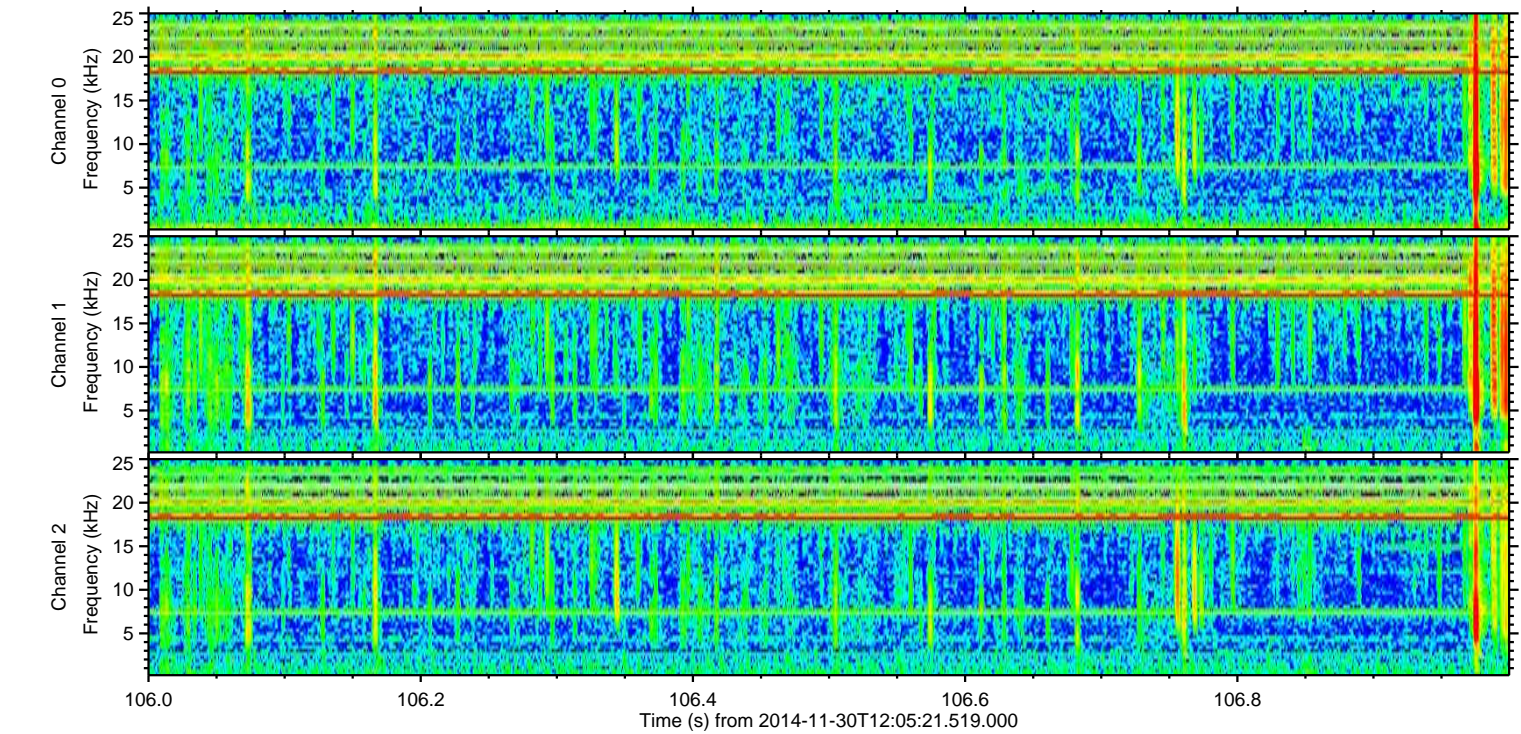
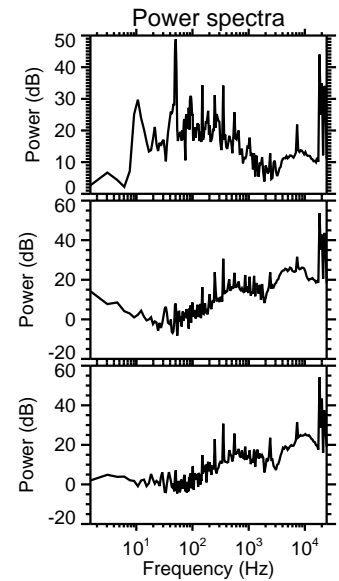
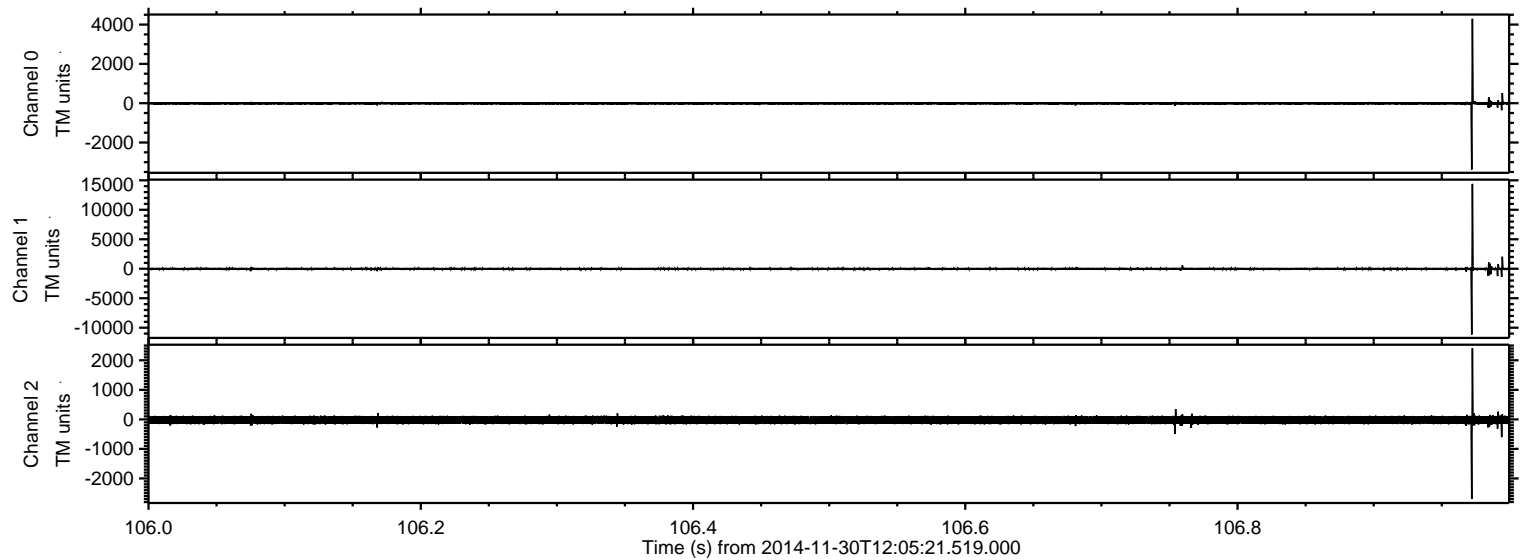
Processed Sun Nov 30 13:12:59 2014 by ELM ver.2012-10-06 from 001\_\_elm20141130\_120520\_\_dat00.bin





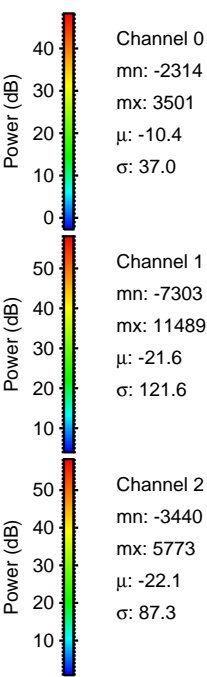
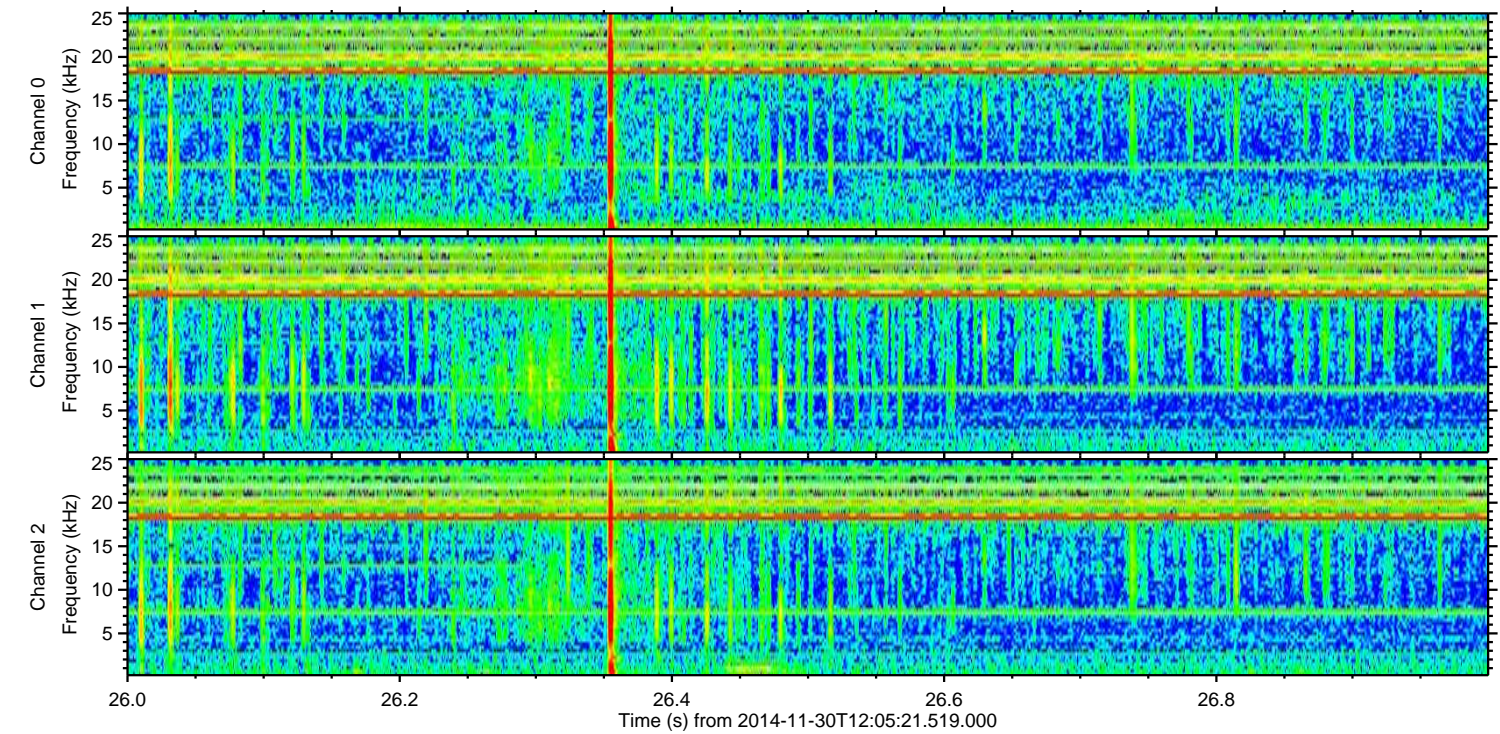
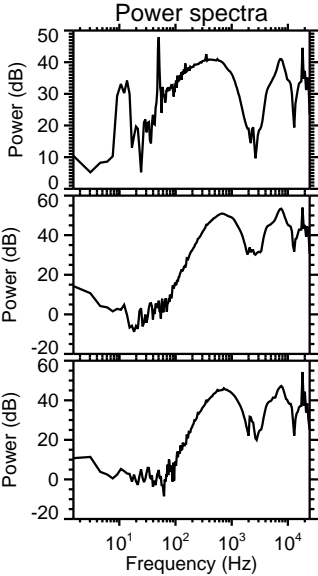
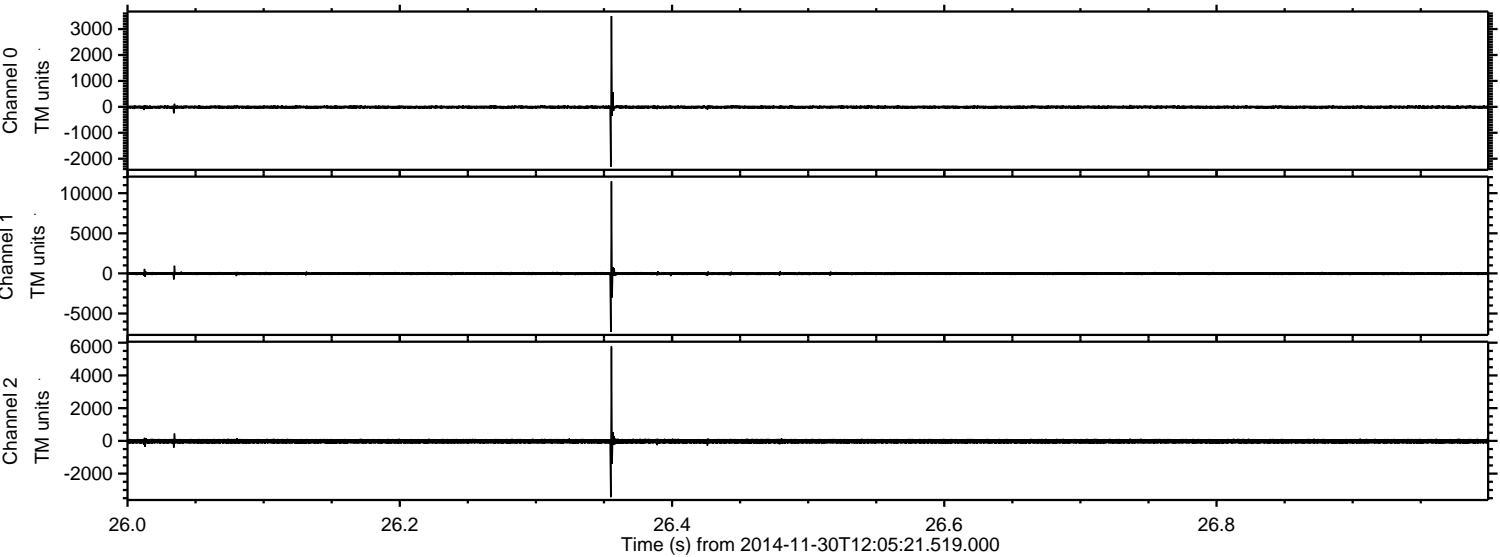
ELMAVAN 3D WAVEFORMS (Measured data sampled at 50 kHz) 49800 packets of 144 samples from 2014-11-30T12:05:21.519.000. Part 107/144

Processed Sun Nov 30 13:13:15 2014 by ELM ver.2012-10-06 from 001\_\_elm20141130\_120520\_\_dat00.bin



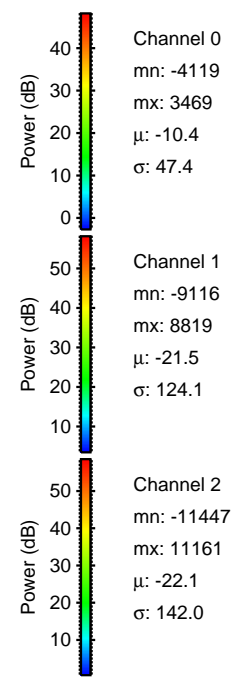
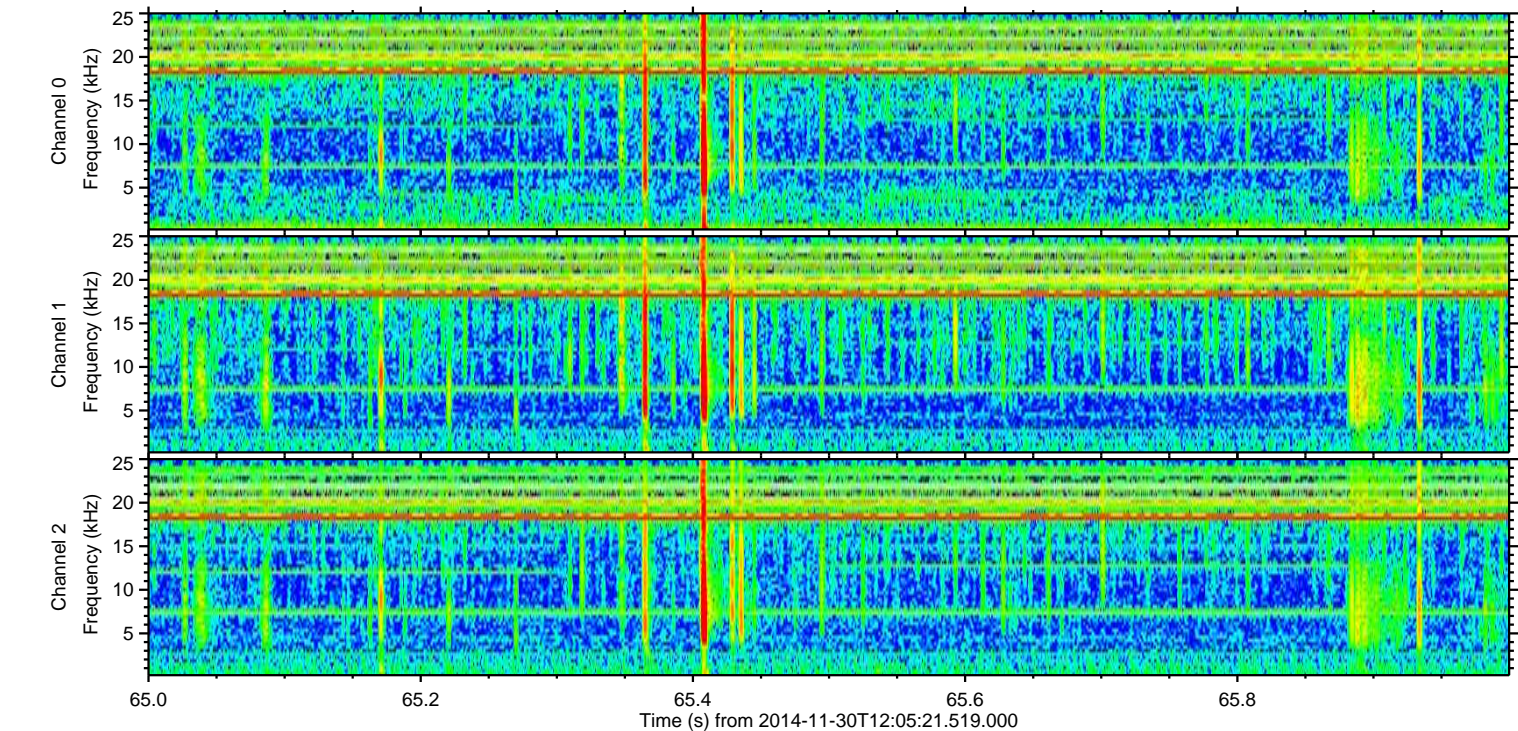
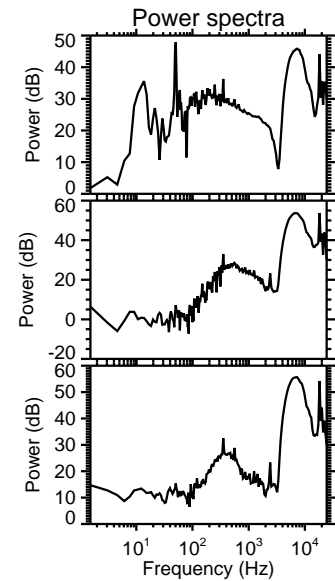
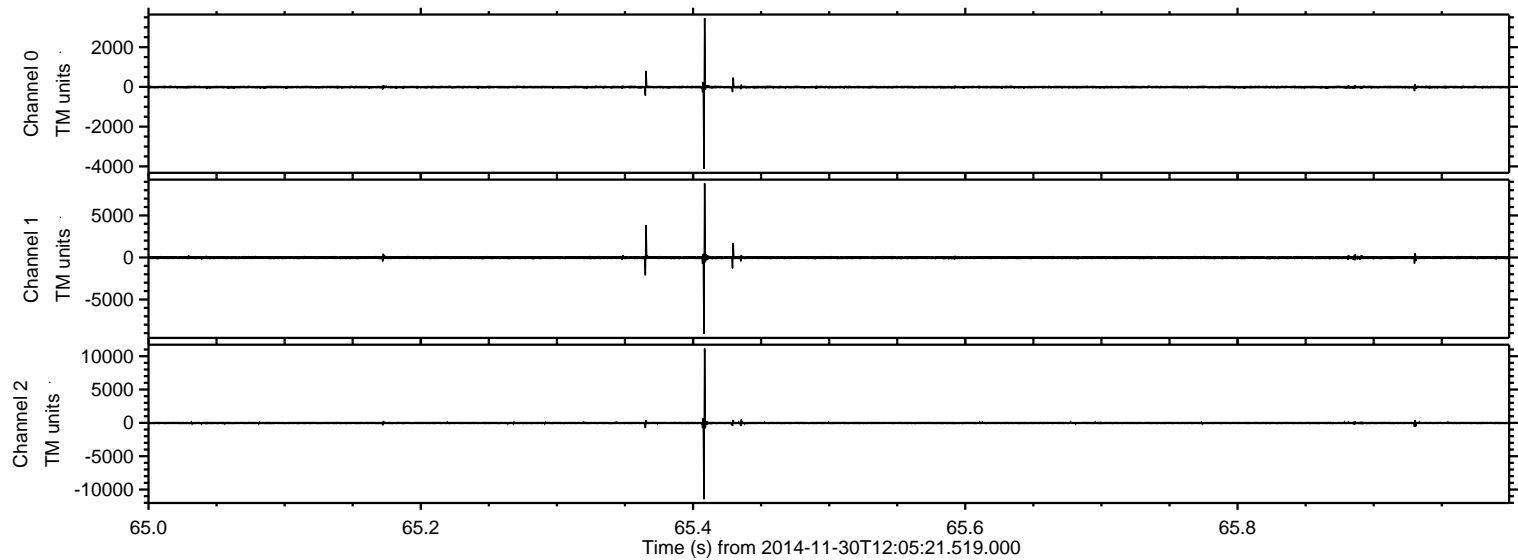


Processed Sun Nov 30 13:13:16 2014 by ELM ver.2012-10-06 from 001\_\_elm20141130\_120520\_\_dat00.bin





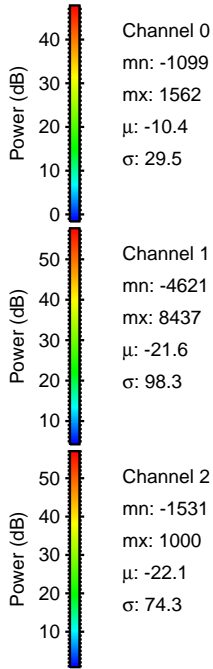
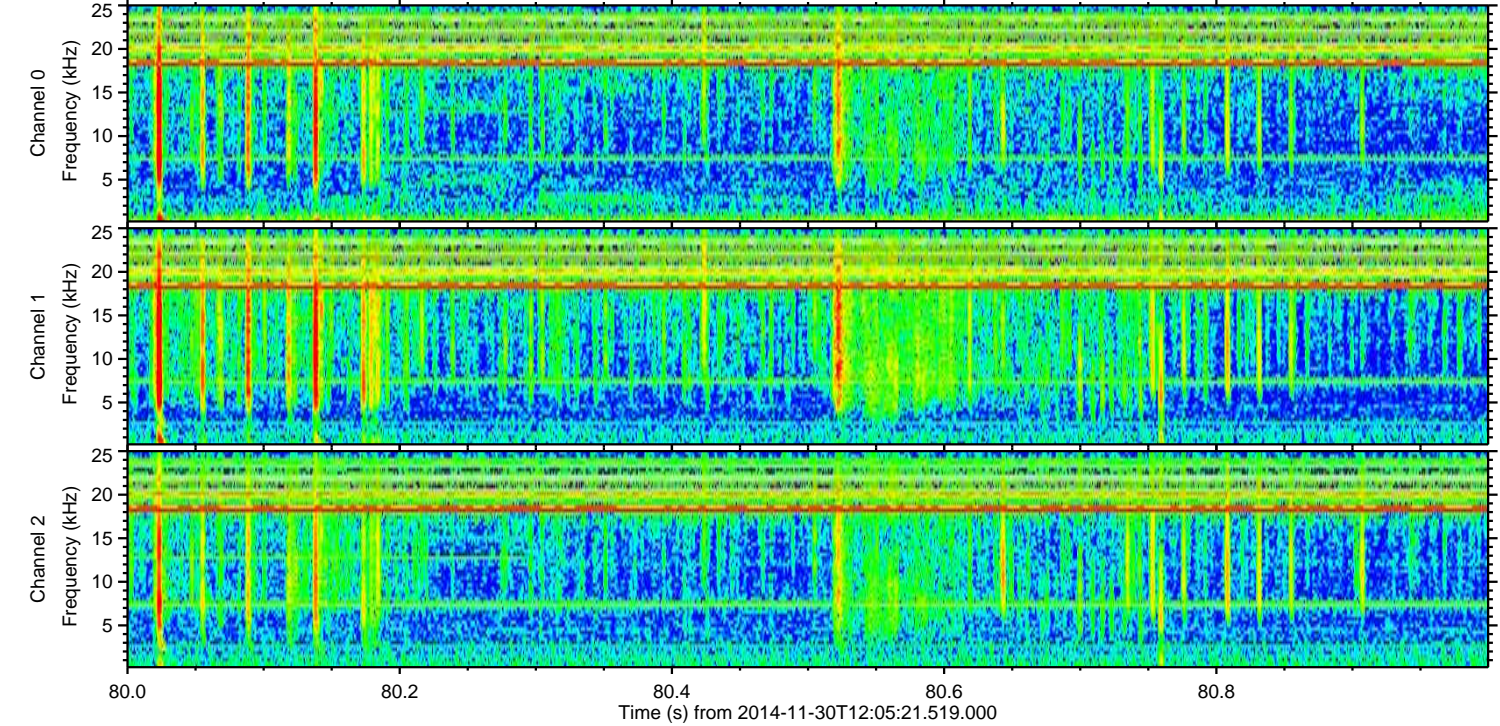
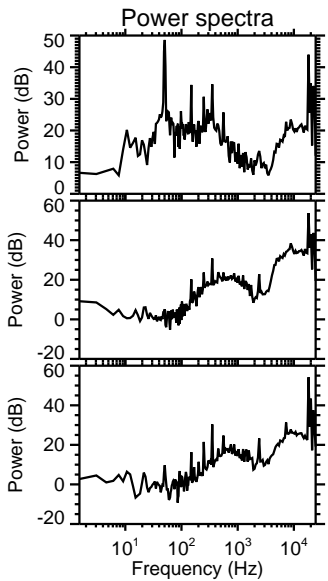
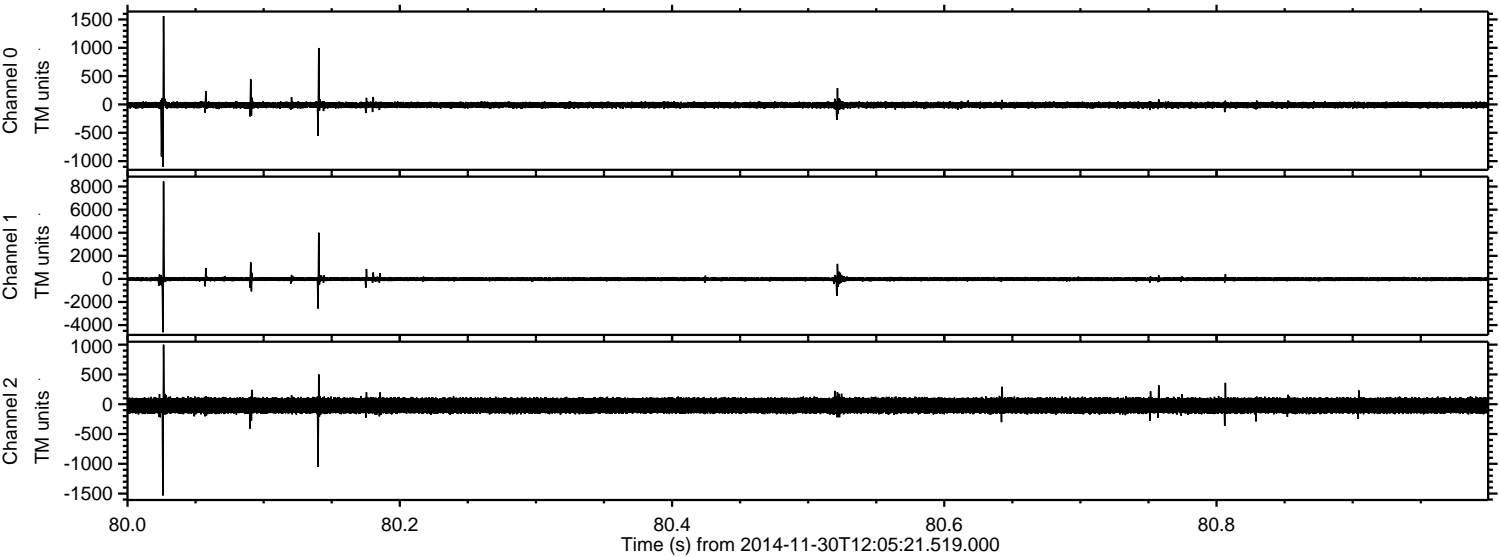
Processed Sun Nov 30 13:13:17 2014 by ELM ver.2012-10-06 from 001\_\_elm20141130\_120520\_\_dat00.bin





ELMAVAN 3D WAVEFORMS (Measured data sampled at 50 kHz) 49800 packets of 144 samples from 2014-11-30T12:05:21.519.000. Part 81/144

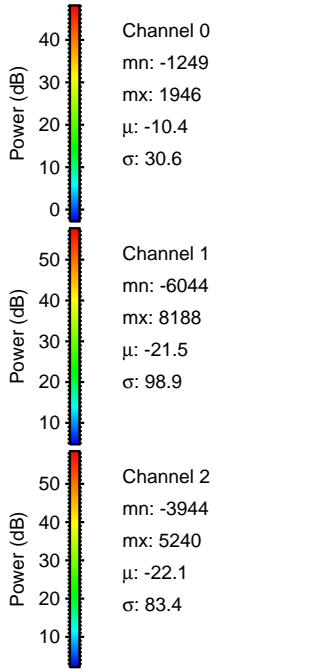
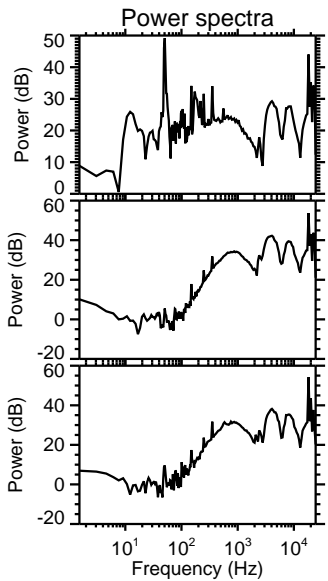
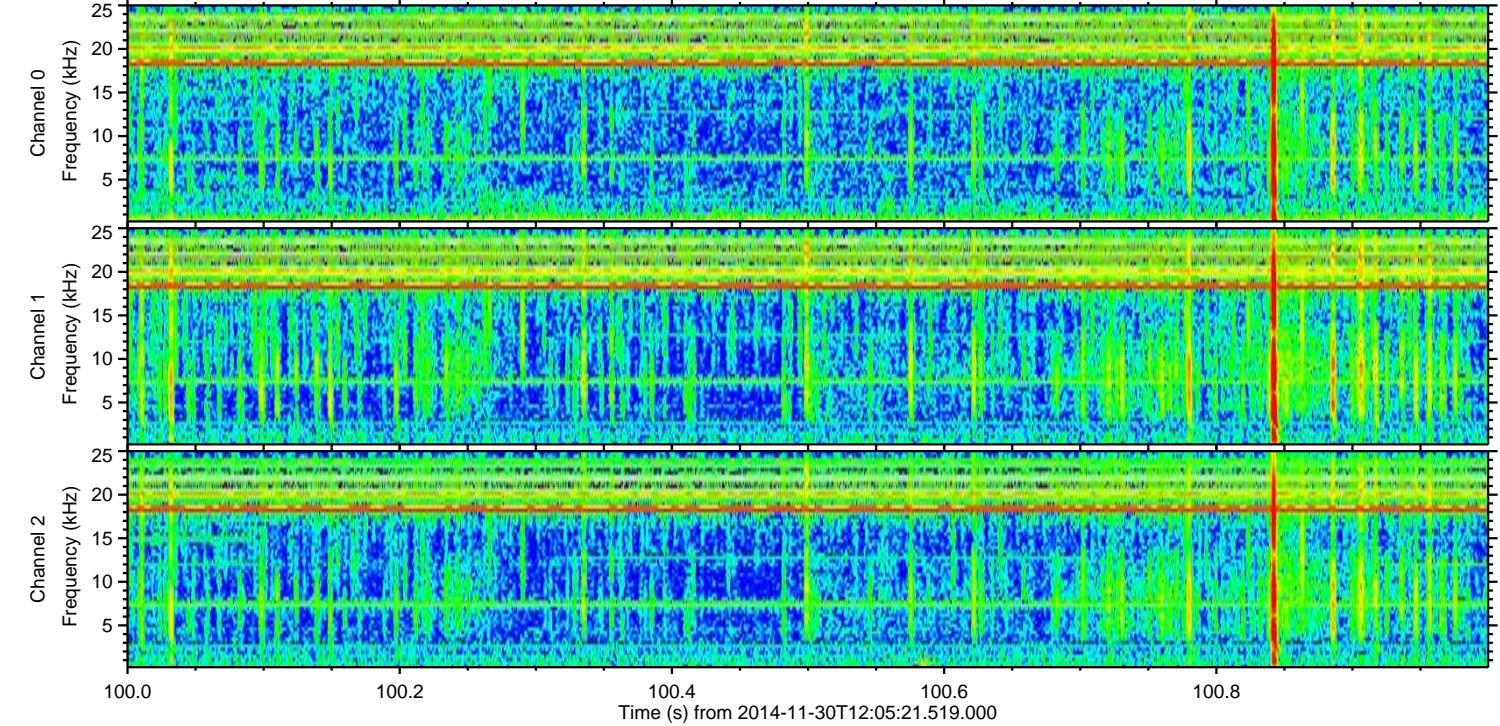
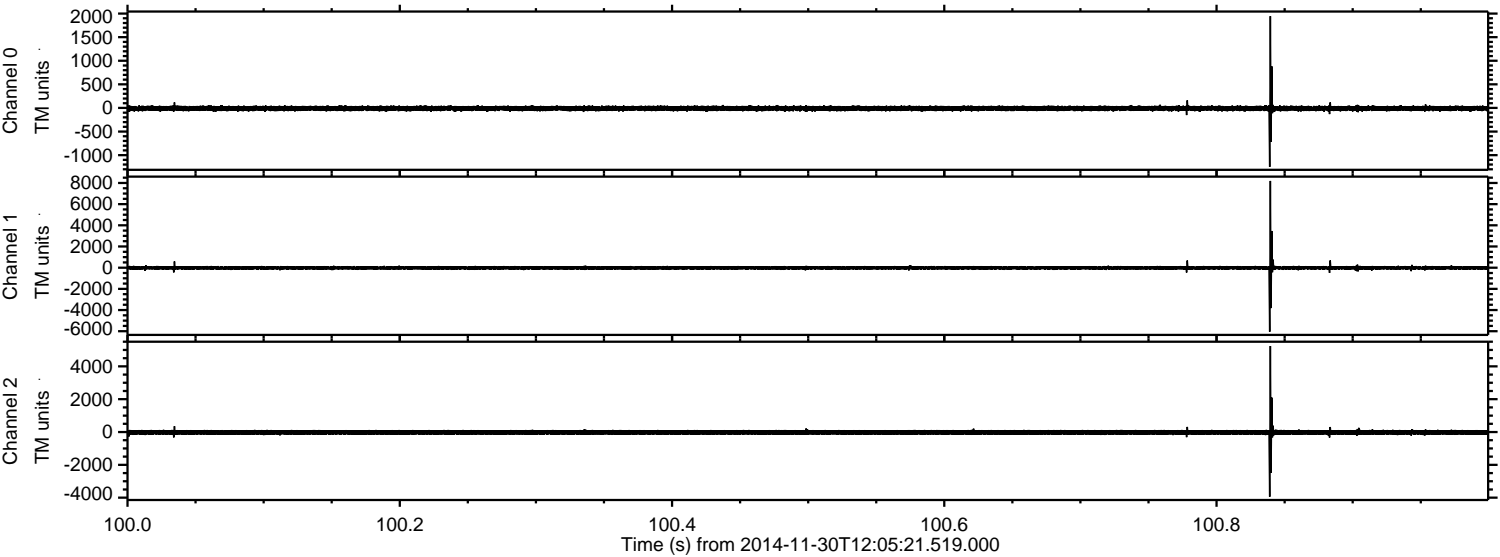
Processed Sun Nov 30 13:13:18 2014 by ELM ver.2012-10-06 from 001\_\_elm20141130\_120520\_\_dat00.bin





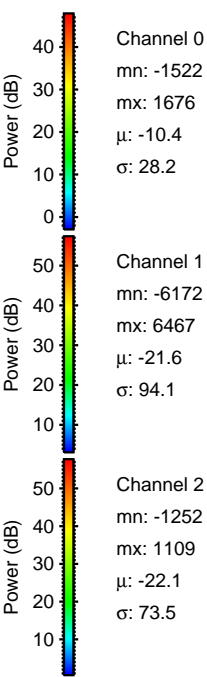
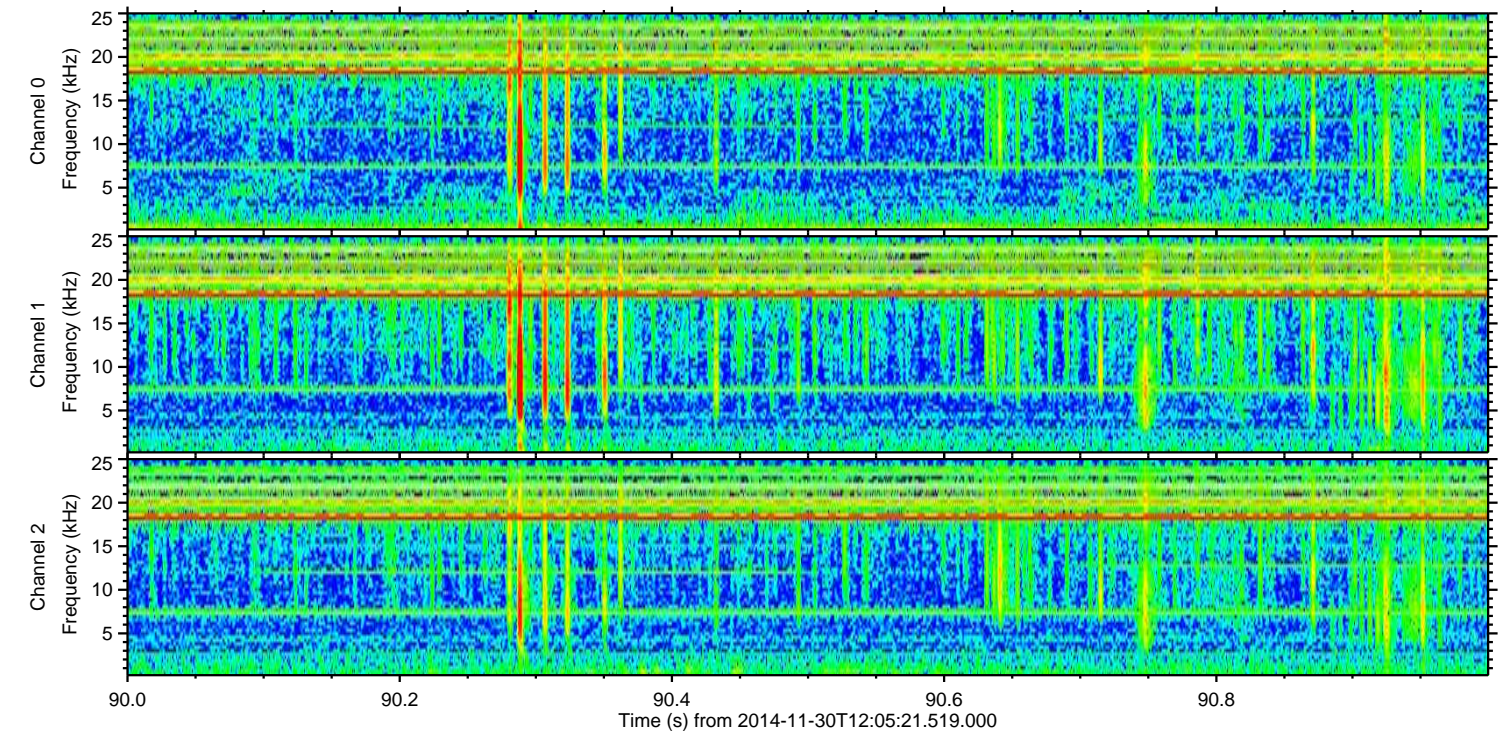
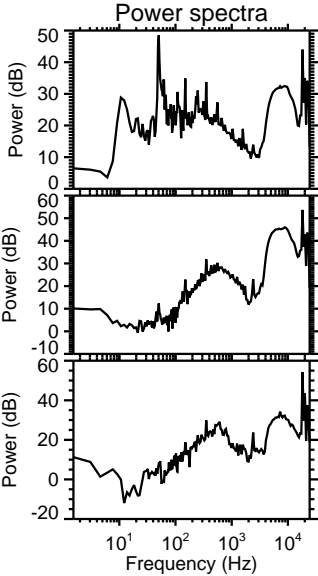
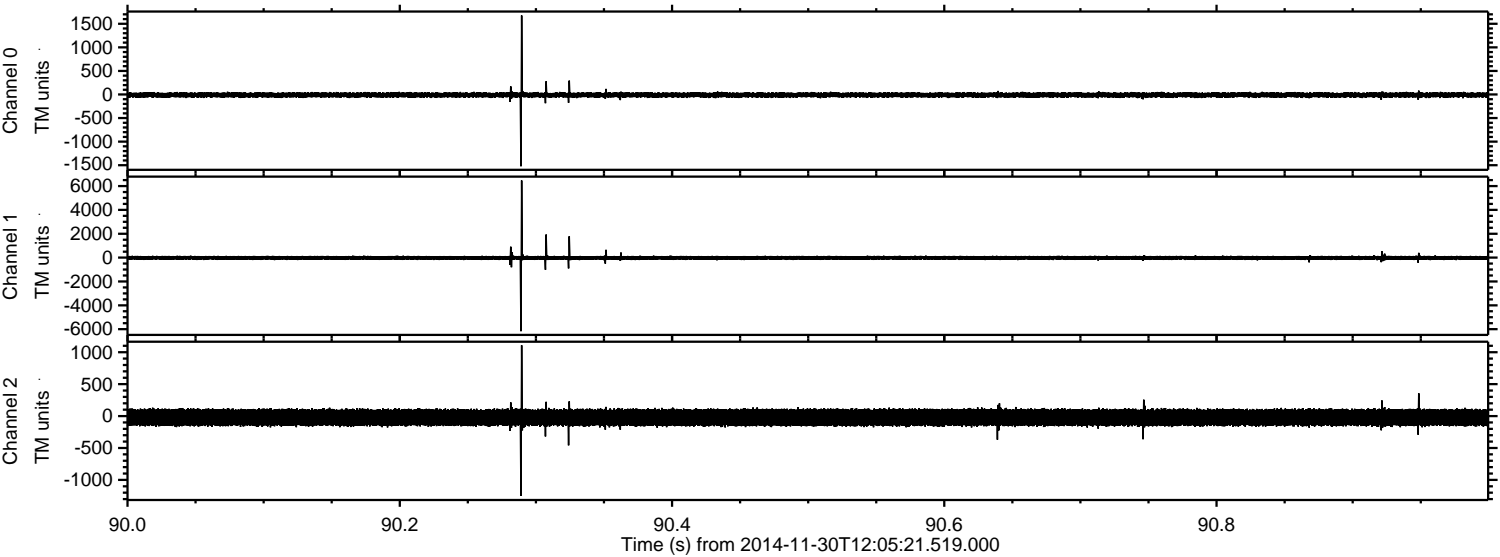
ELMAVAN 3D WAVEFORMS (Measured data sampled at 50 kHz) 49800 packets of 144 samples from 2014-11-30T12:05:21.519.000. Part 101/144

Processed Sun Nov 30 13:13:19 2014 by ELM ver.2012-10-06 from 001\_\_elm20141130\_120520\_\_dat00.bin





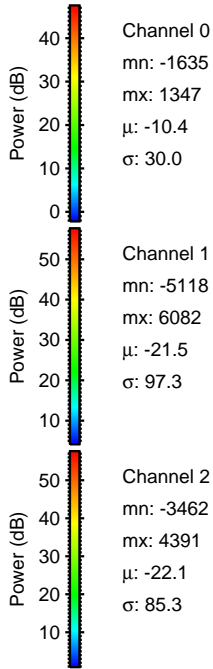
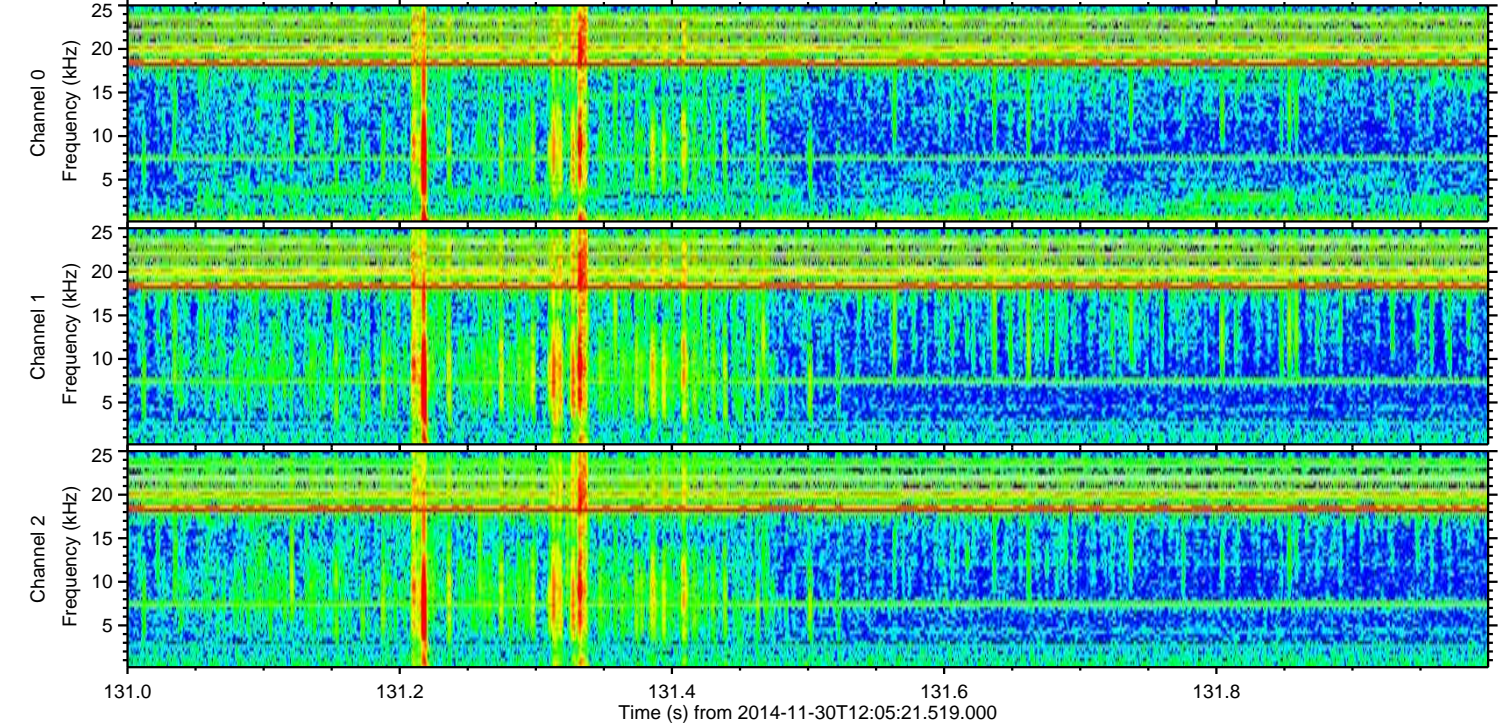
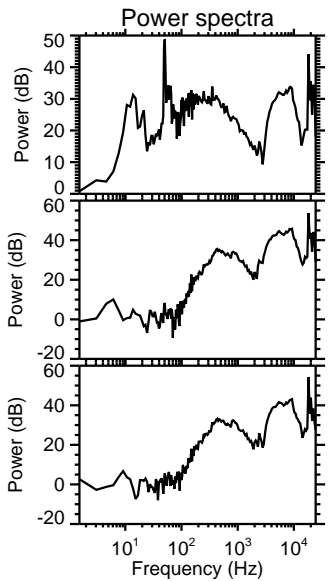
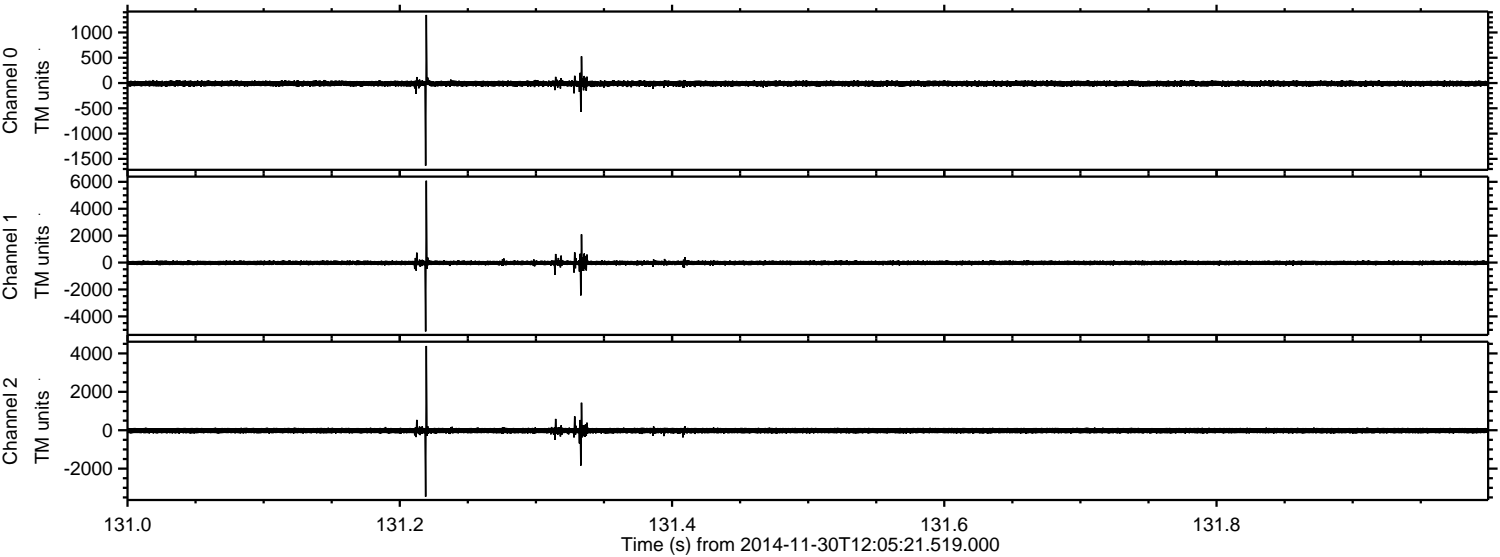
Processed Sun Nov 30 13:13:20 2014 by ELM ver.2012-10-06 from 001\_\_elm20141130\_120520\_\_dat00.bin





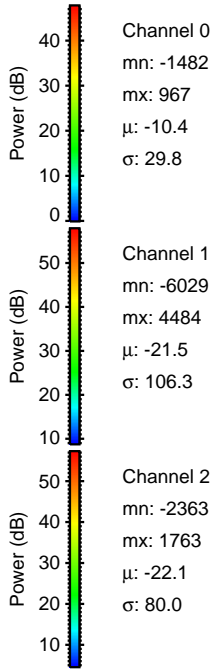
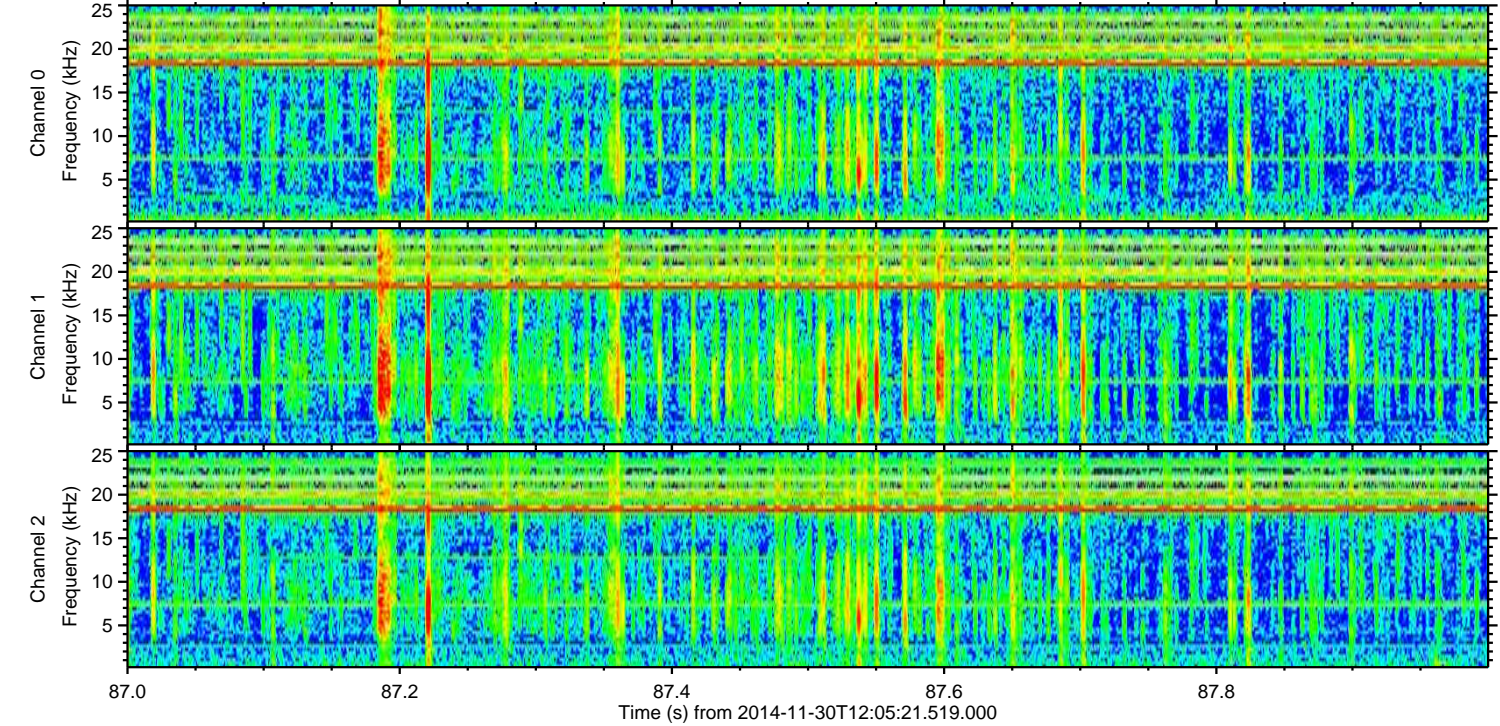
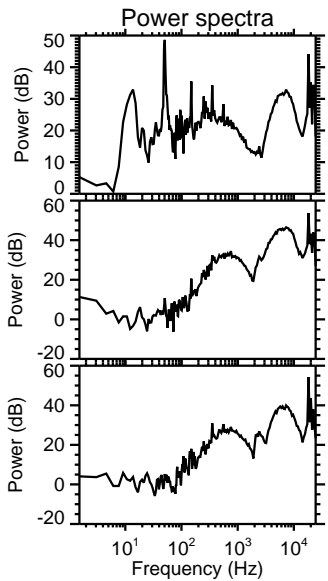
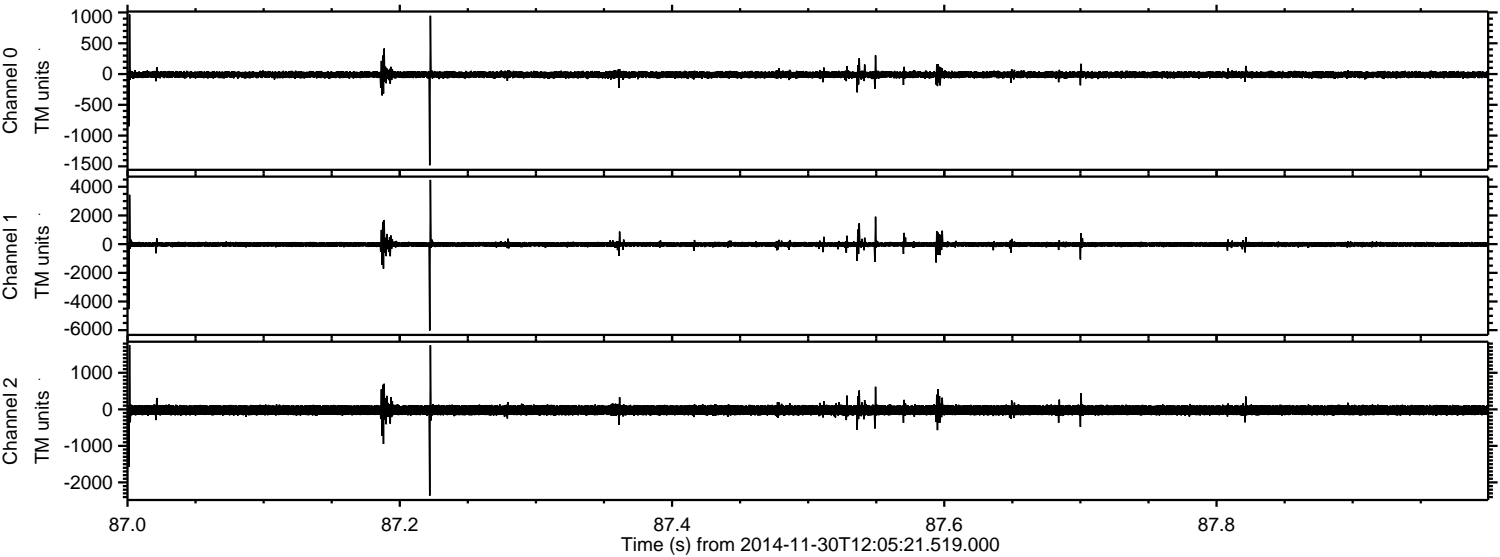
ELMAVAN 3D WAVEFORMS (Measured data sampled at 50 kHz) 49800 packets of 144 samples from 2014-11-30T12:05:21.519.000. Part 132/144

Processed Sun Nov 30 13:13:21 2014 by ELM ver.2012-10-06 from 001\_\_elm20141130\_120520\_\_dat00.bin





Processed Sun Nov 30 13:13:22 2014 by ELM ver.2012-10-06 from 001\_\_elm20141130\_120520\_\_dat00.bin



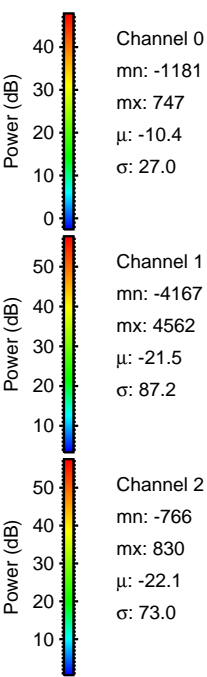
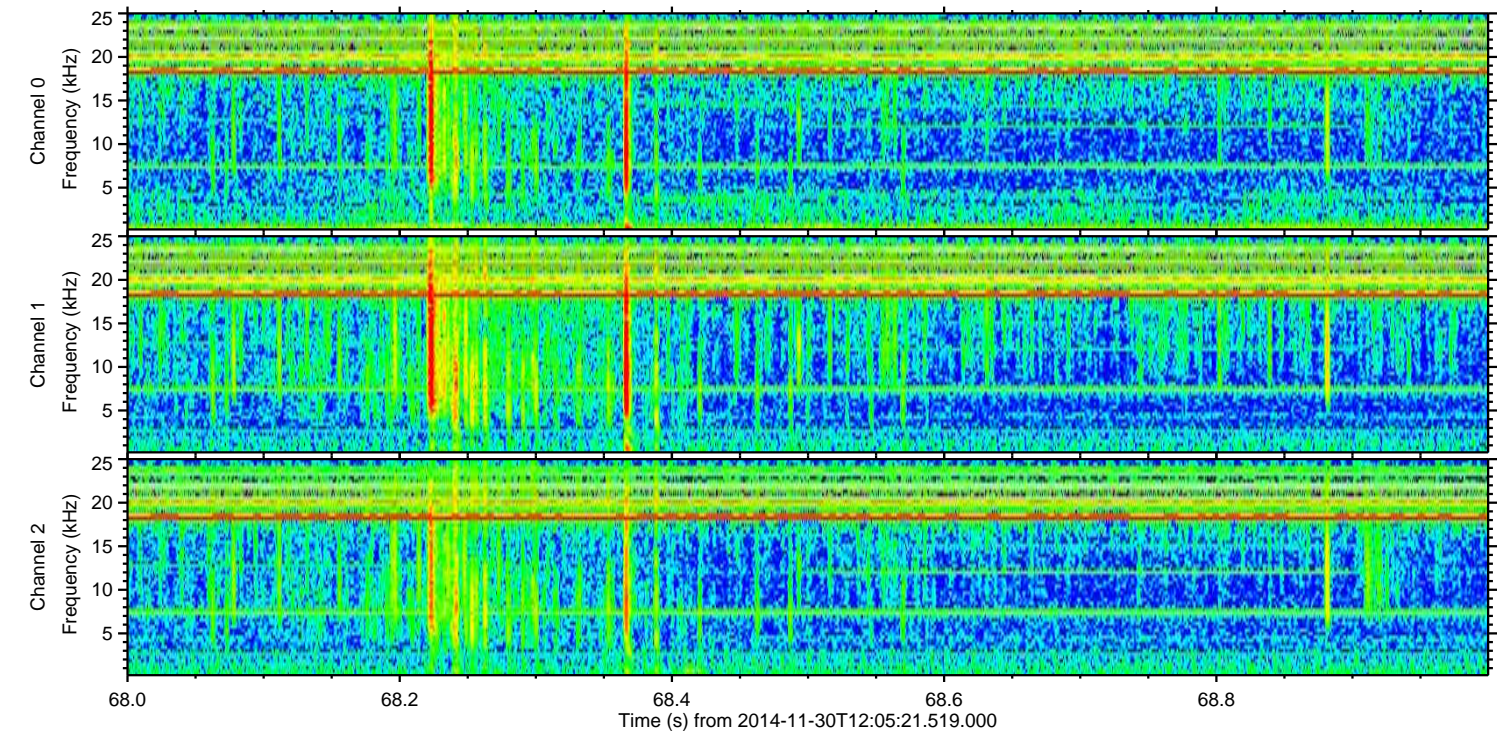
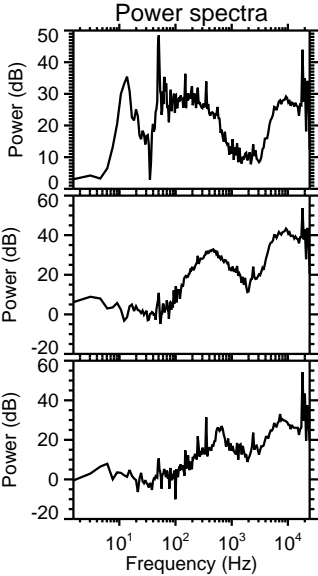
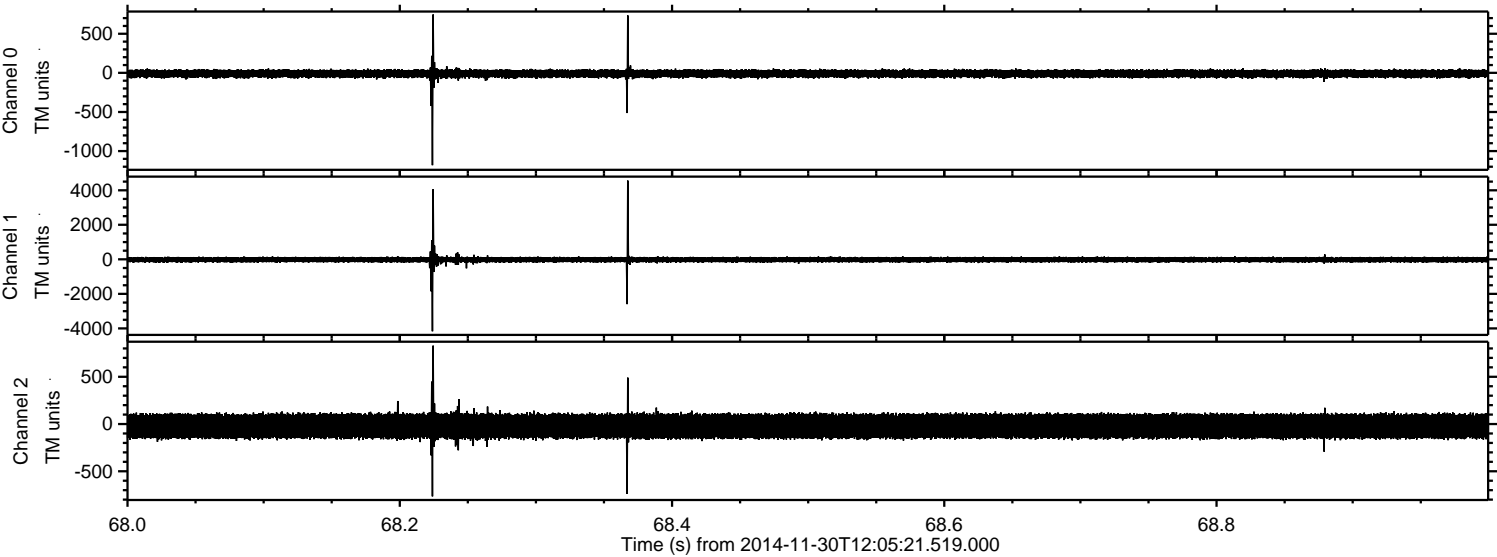
Channel 0  
mn: -1482  
mx: 967  
 $\mu$ : -10.4  
 $\sigma$ : 29.8

Channel 1  
mn: -6029  
mx: 4484  
 $\mu$ : -21.5  
 $\sigma$ : 106.3

Channel 2  
mn: -2363  
mx: 1763  
 $\mu$ : -22.1  
 $\sigma$ : 80.0



Processed Sun Nov 30 13:13:23 2014 by ELM ver.2012-10-06 from 001\_\_elm20141130\_120520\_\_dat00.bin





Processed Sun Nov 30 13:13:24 2014 by ELM ver.2012-10-06 from 001\_\_elm20141130\_120520\_\_dat00.bin

