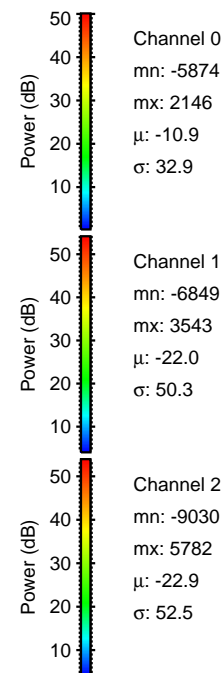
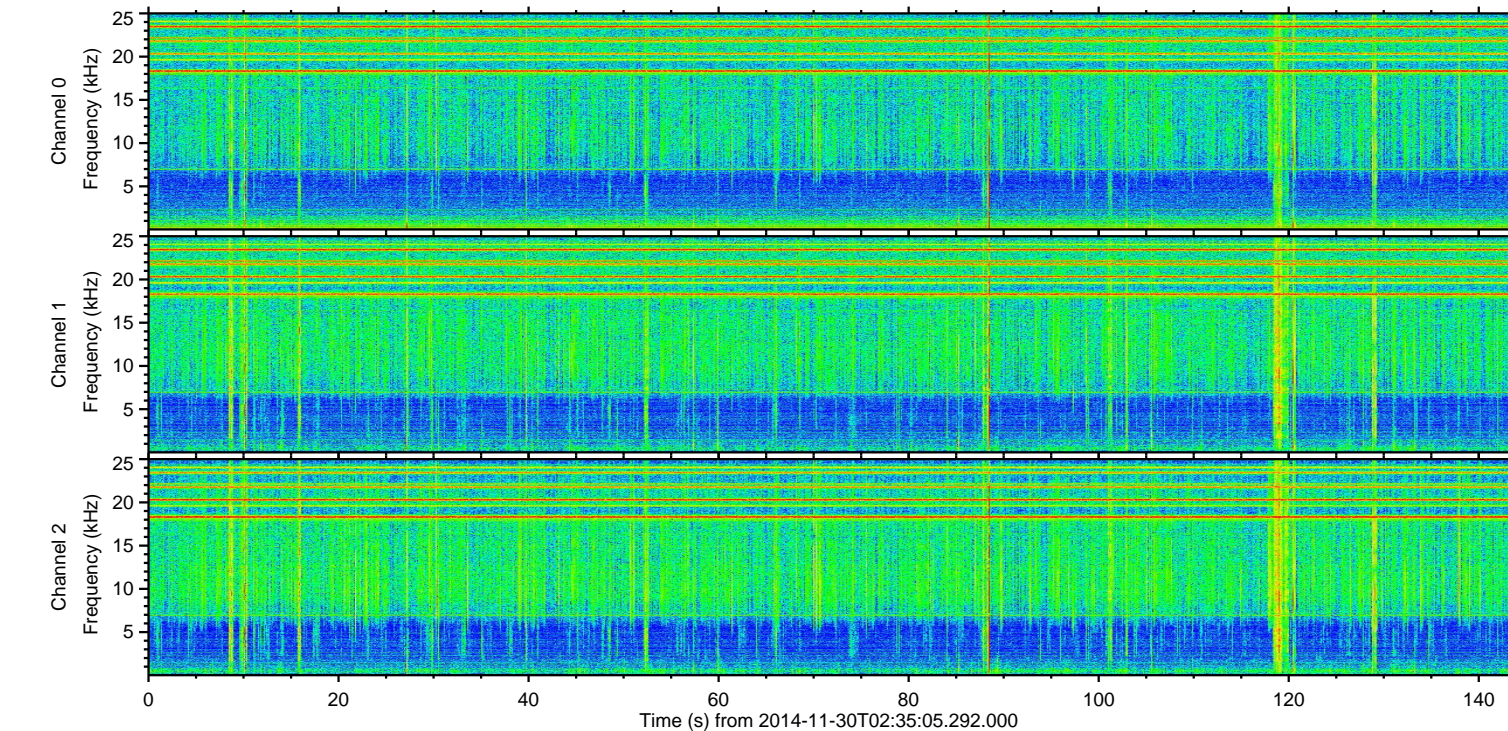
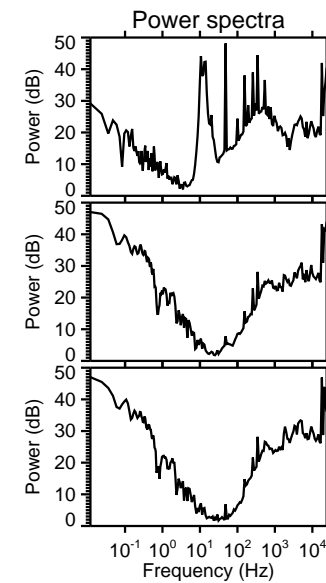
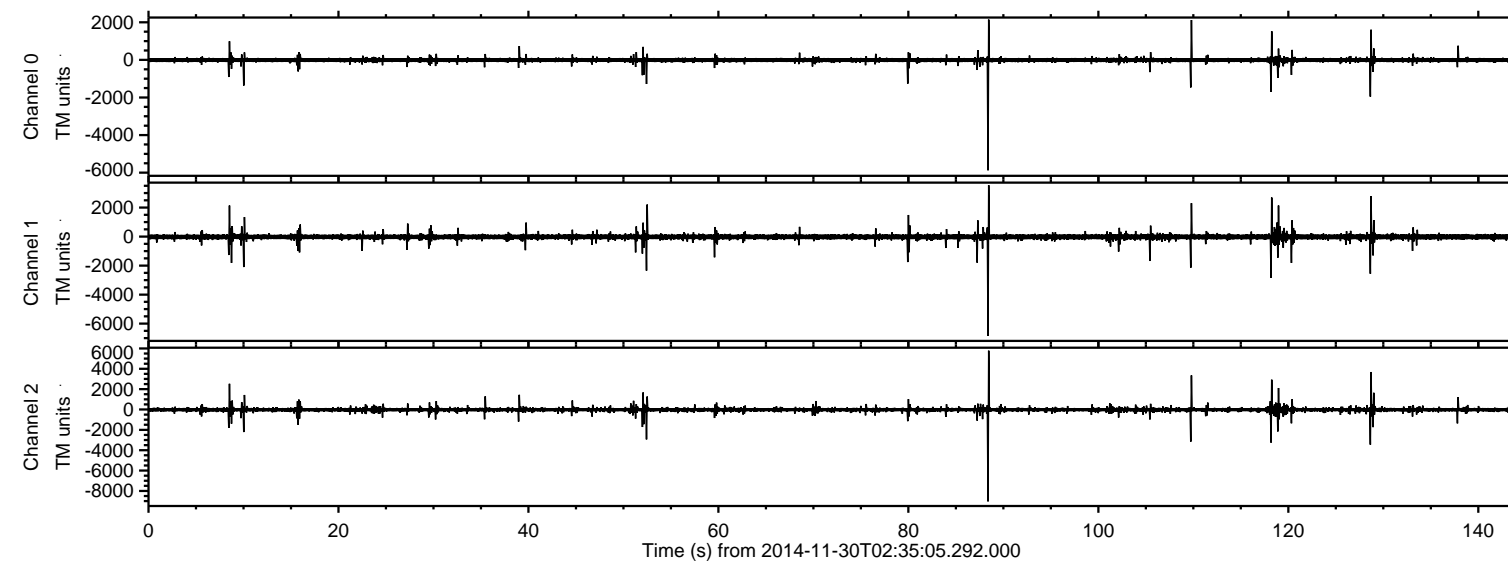
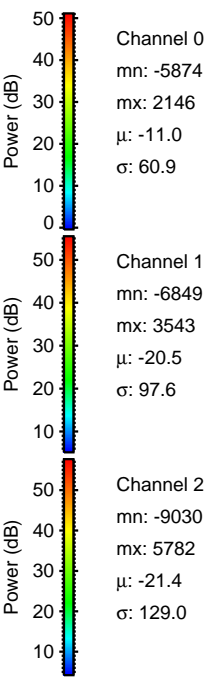
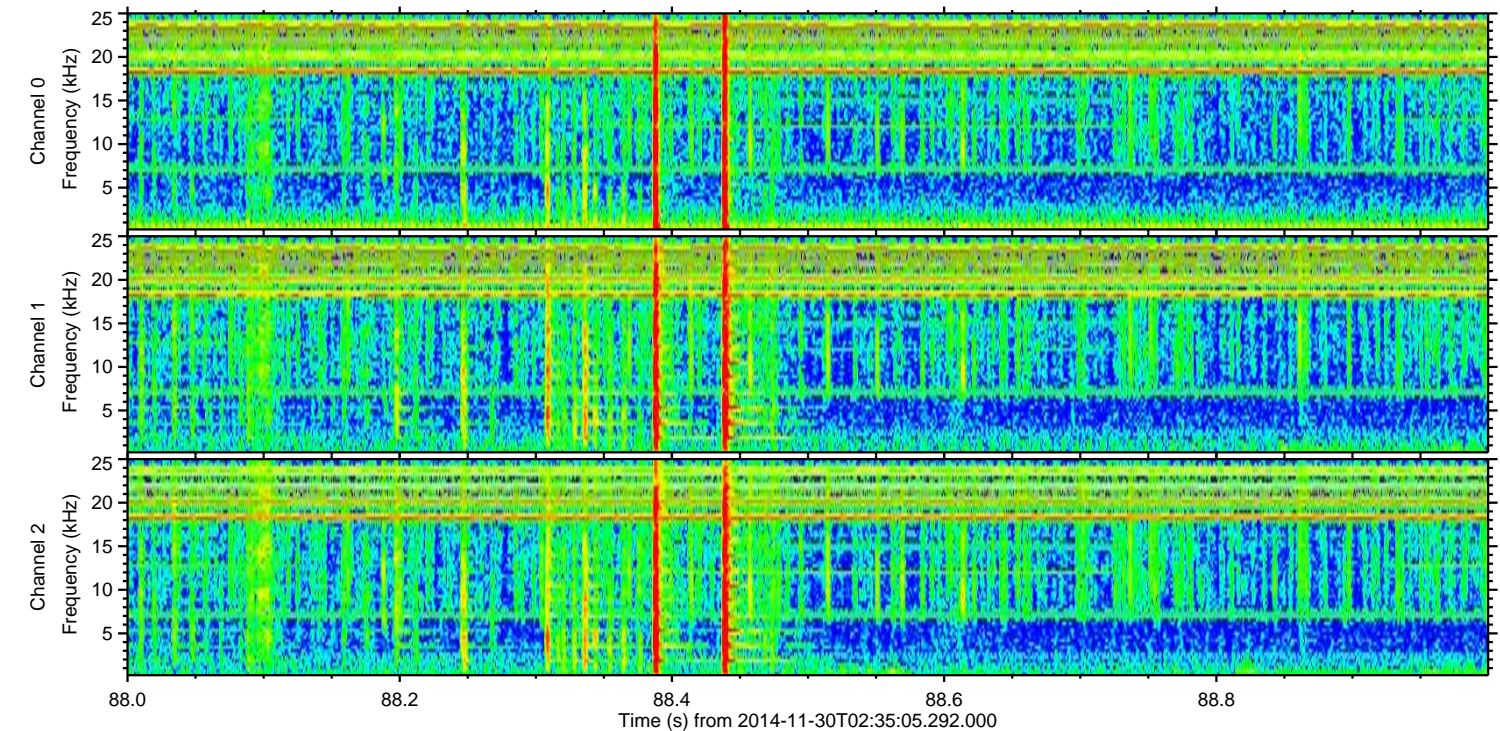
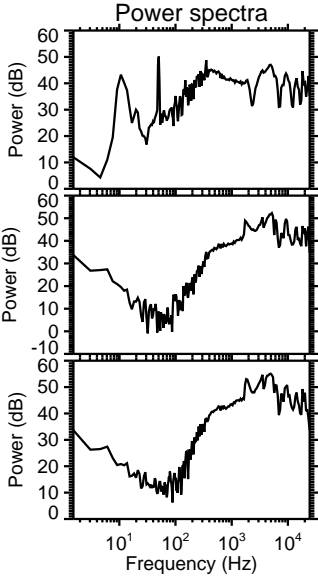
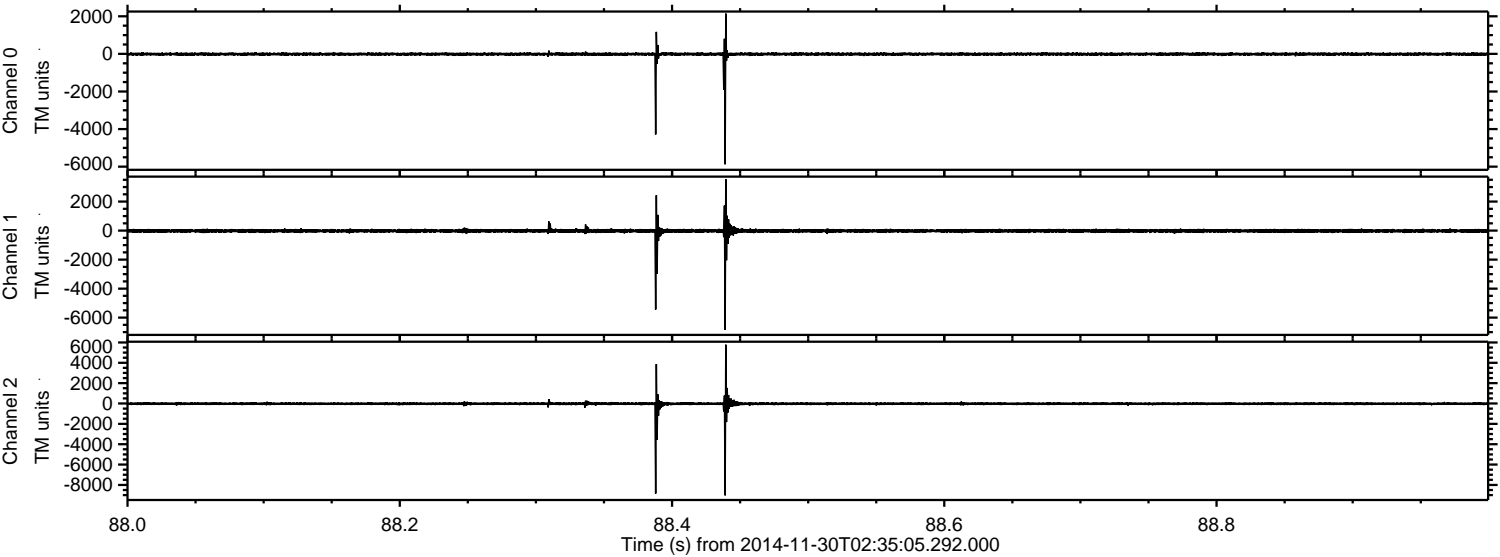


ELMAVAN 3D WAVEFORMS (Measured data sampled at 50 kHz) 49739 packets of 144 samples from 2014-11-30T02:35:05.292.000.

Processed Sun Nov 30 07:20:50 2014 by ELM ver.2012-10-06 from 001__elm20141130_023504__dat00.bin

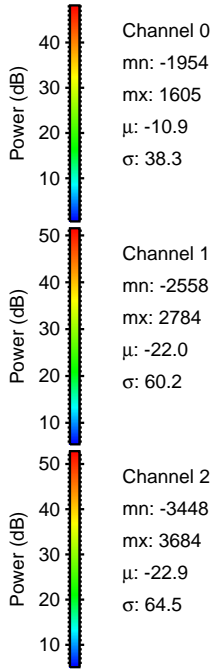
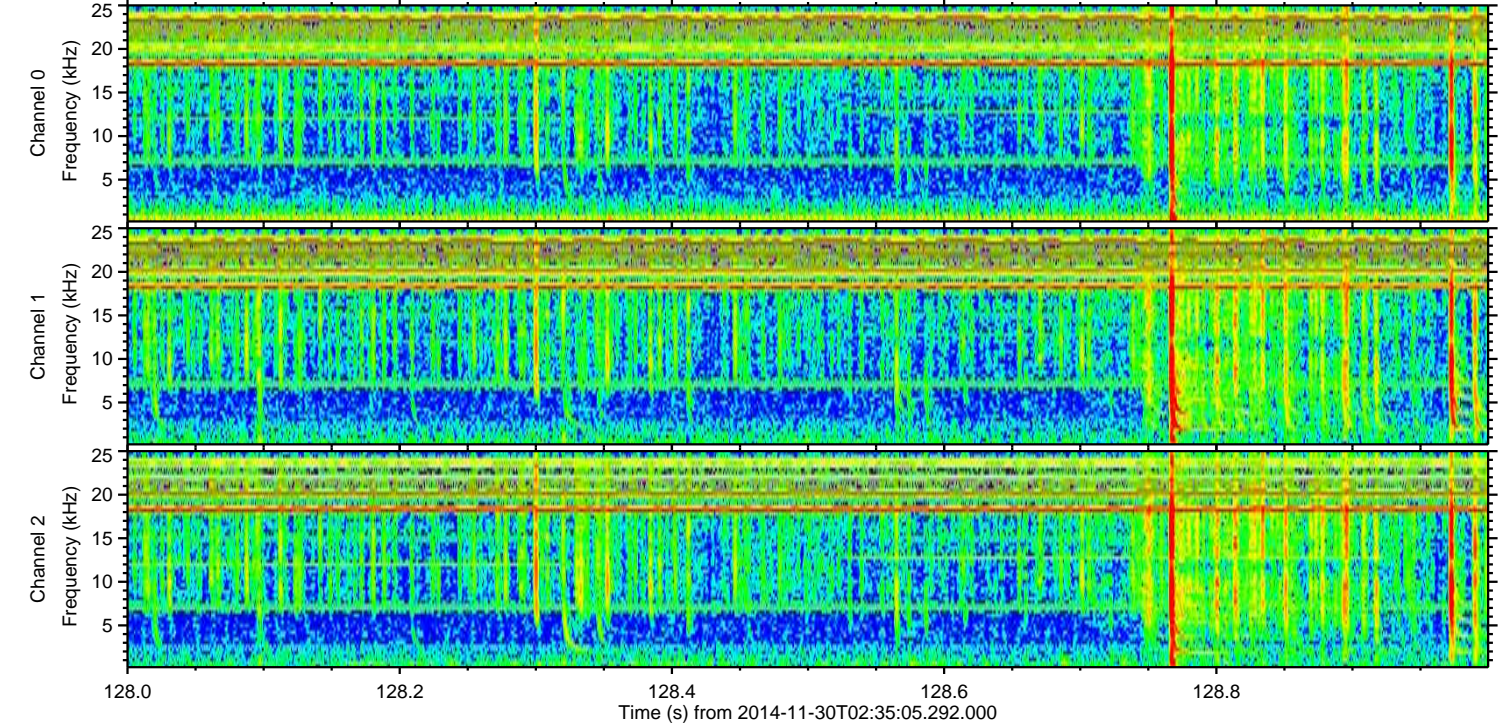
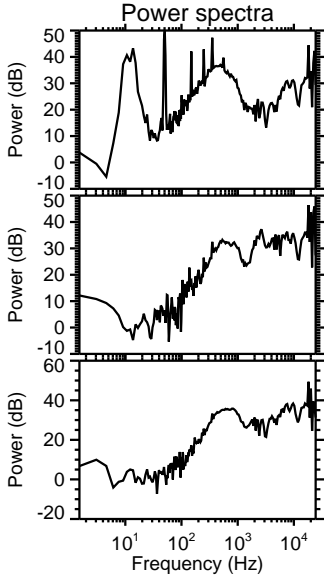
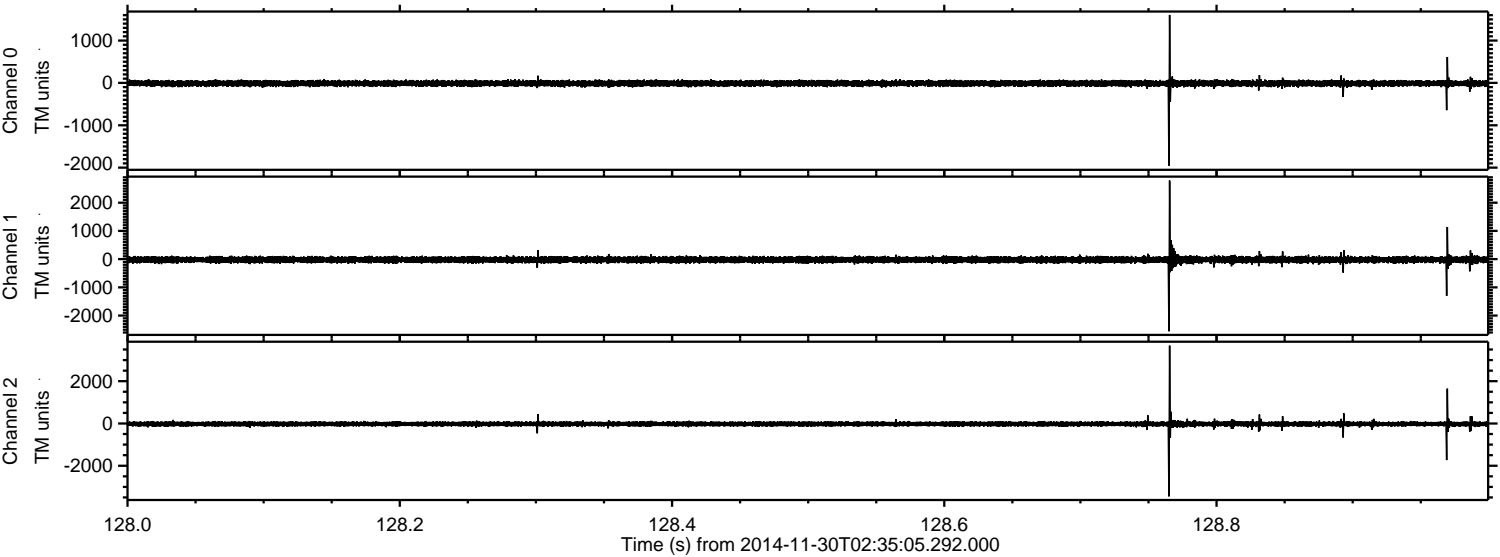


Processed Sun Nov 30 07:21:06 2014 by ELM ver.2012-10-06 from 001__elm20141130_023504__dat00.bin



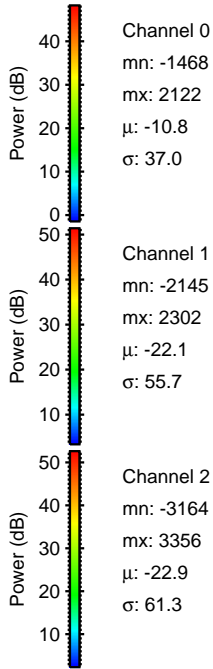
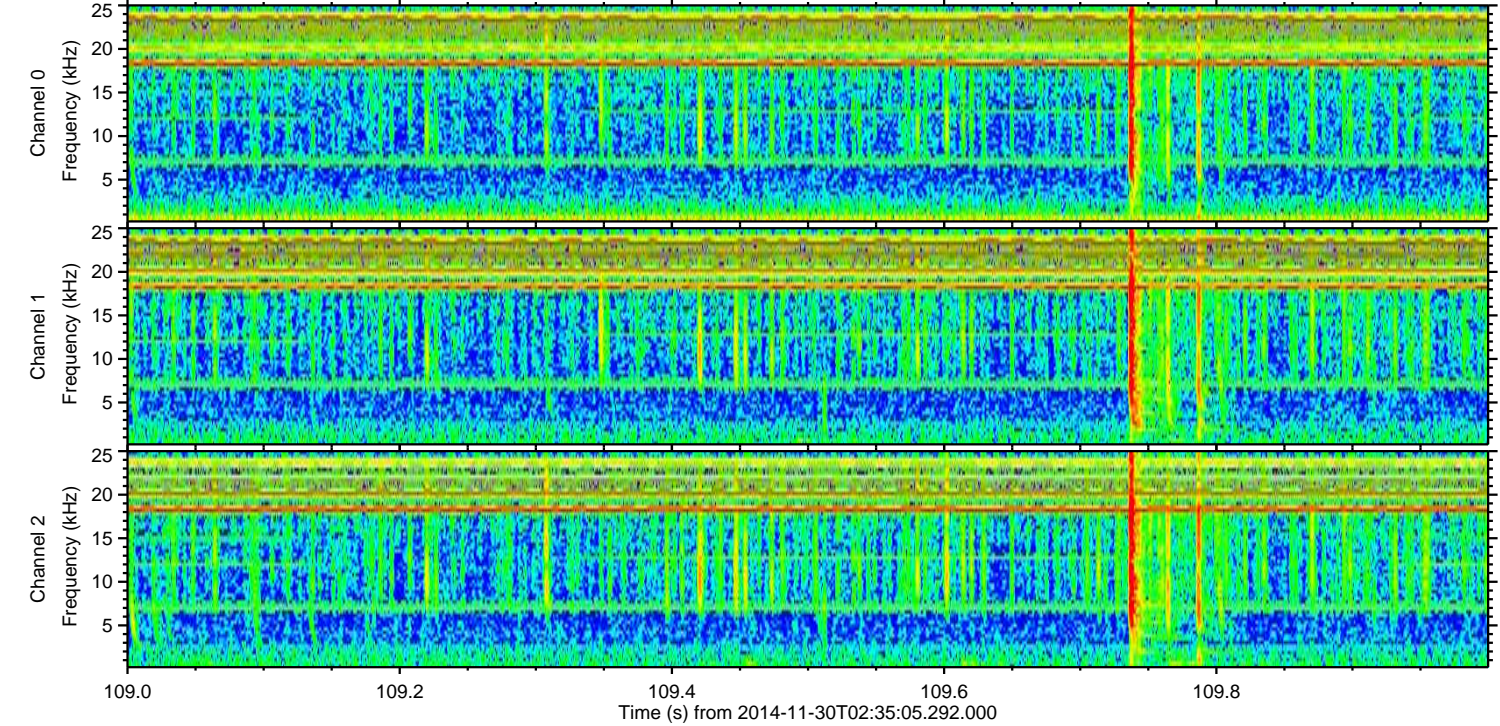
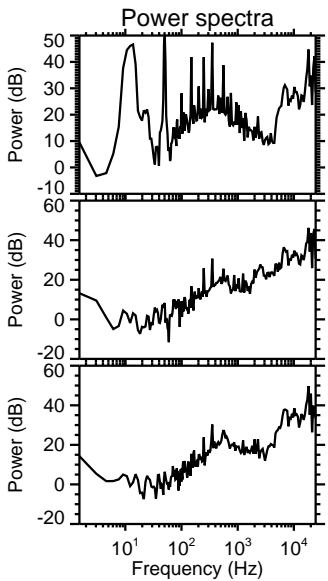
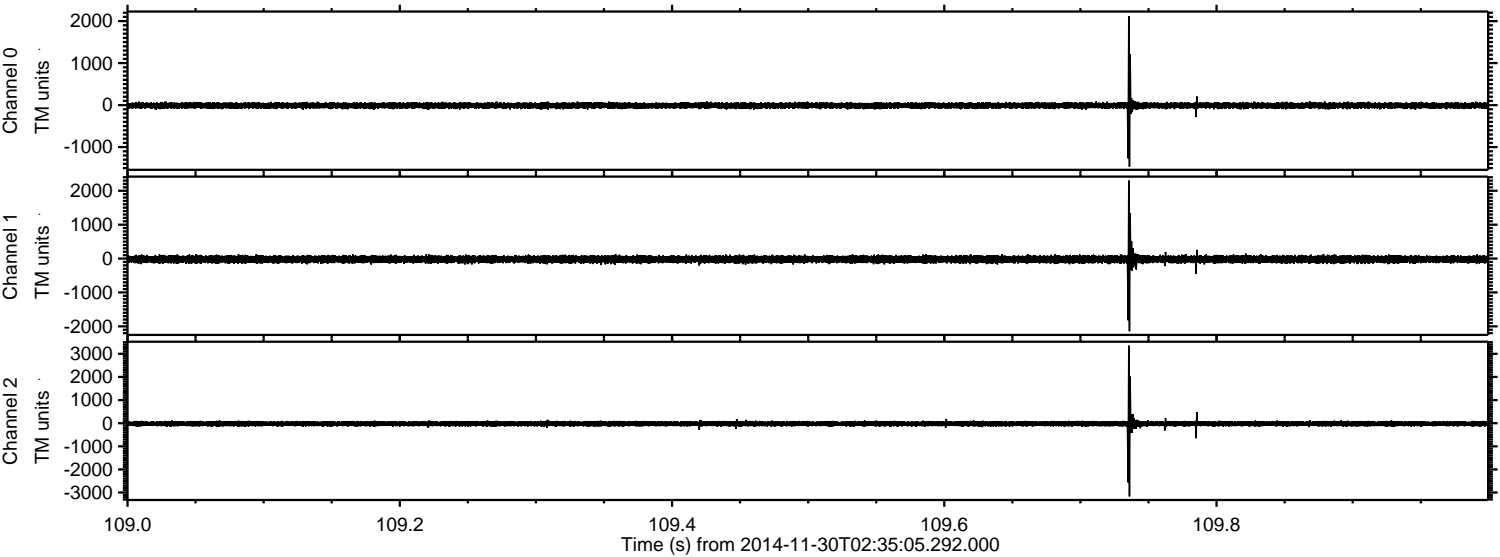
ELMAVAN 3D WAVEFORMS (Measured data sampled at 50 kHz) 49739 packets of 144 samples from 2014-11-30T02:35:05.292.000. Part 129/144

Processed Sun Nov 30 07:21:07 2014 by ELM ver.2012-10-06 from 001__elm20141130_023504__dat00.bin



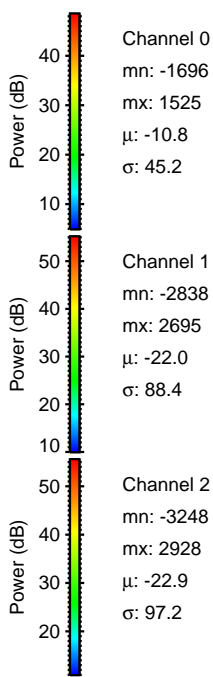
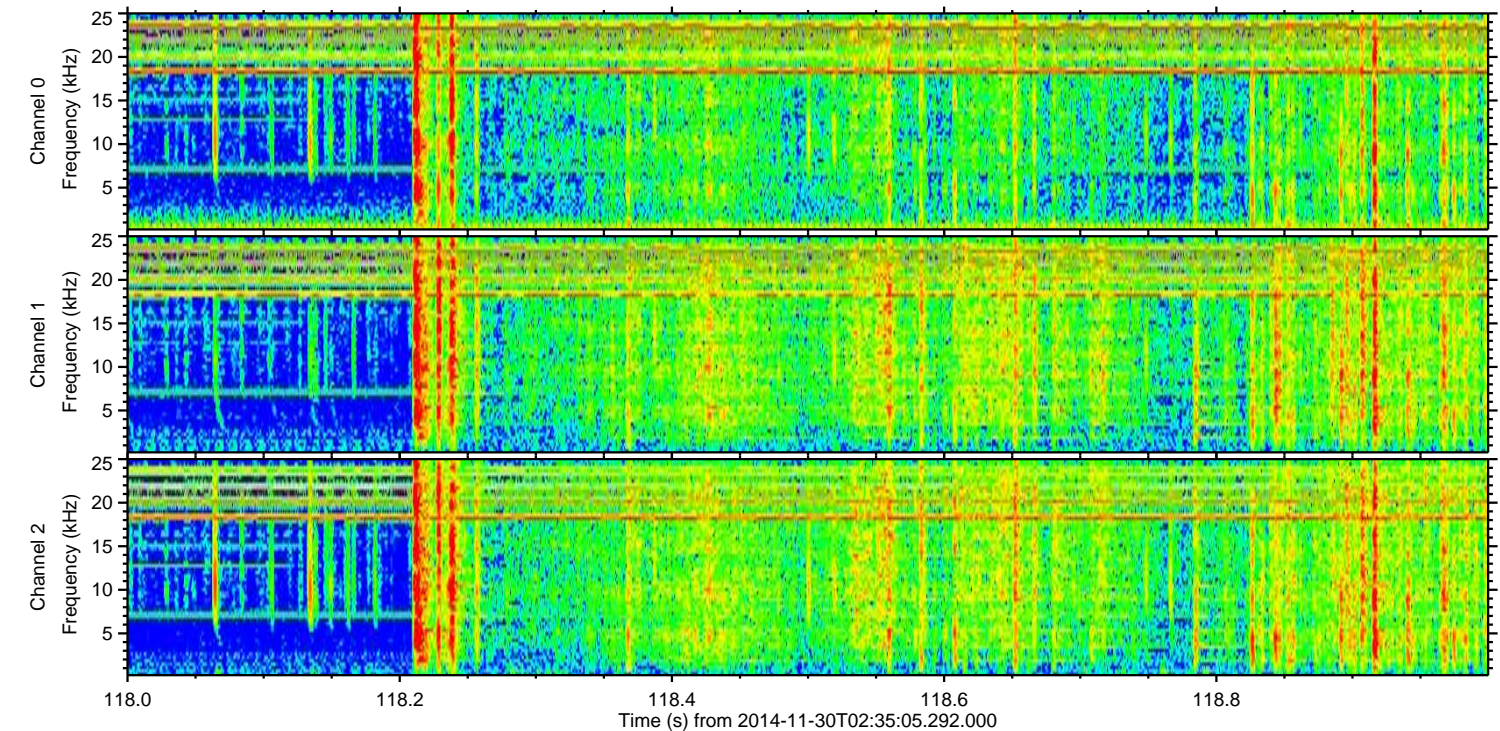
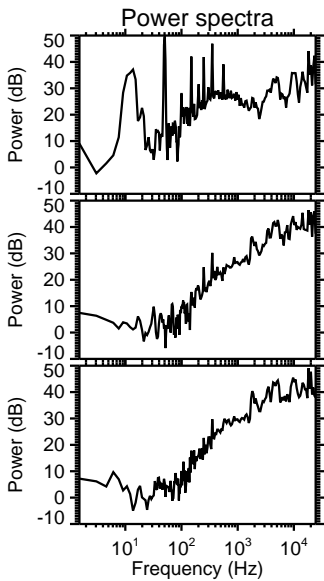
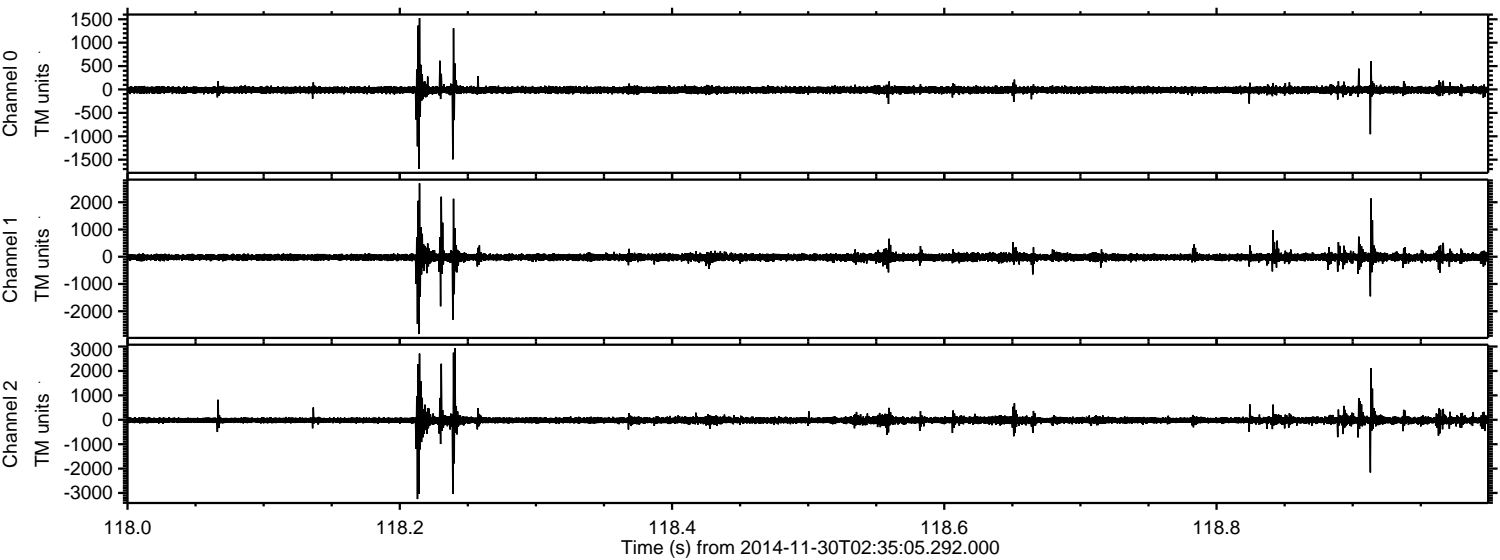
ELMAVAN 3D WAVEFORMS (Measured data sampled at 50 kHz) 49739 packets of 144 samples from 2014-11-30T02:35:05.292.000. Part 110/144

Processed Sun Nov 30 07:21:08 2014 by ELM ver.2012-10-06 from 001__elm20141130_023504__dat00.bin

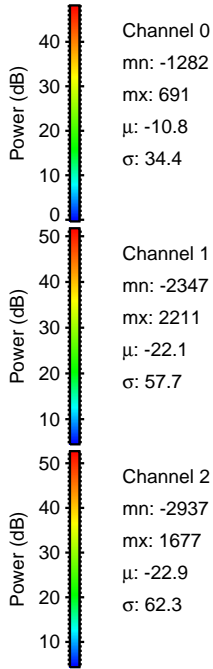
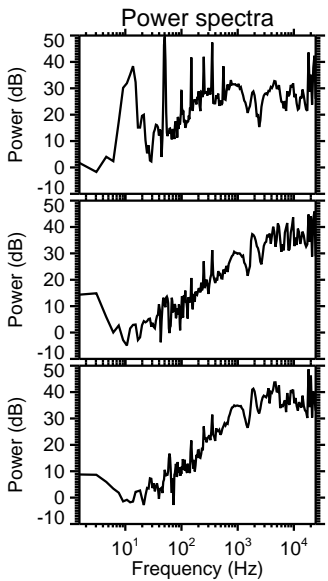
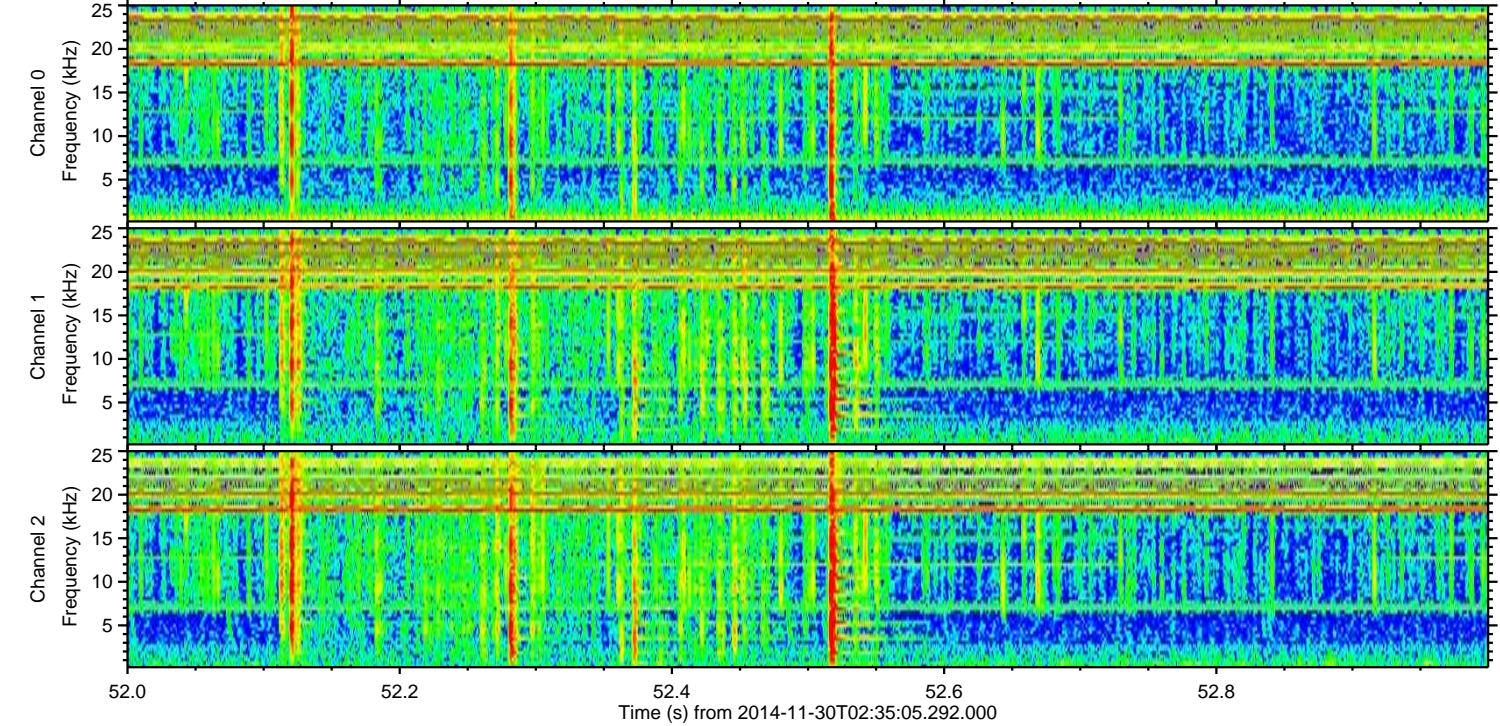
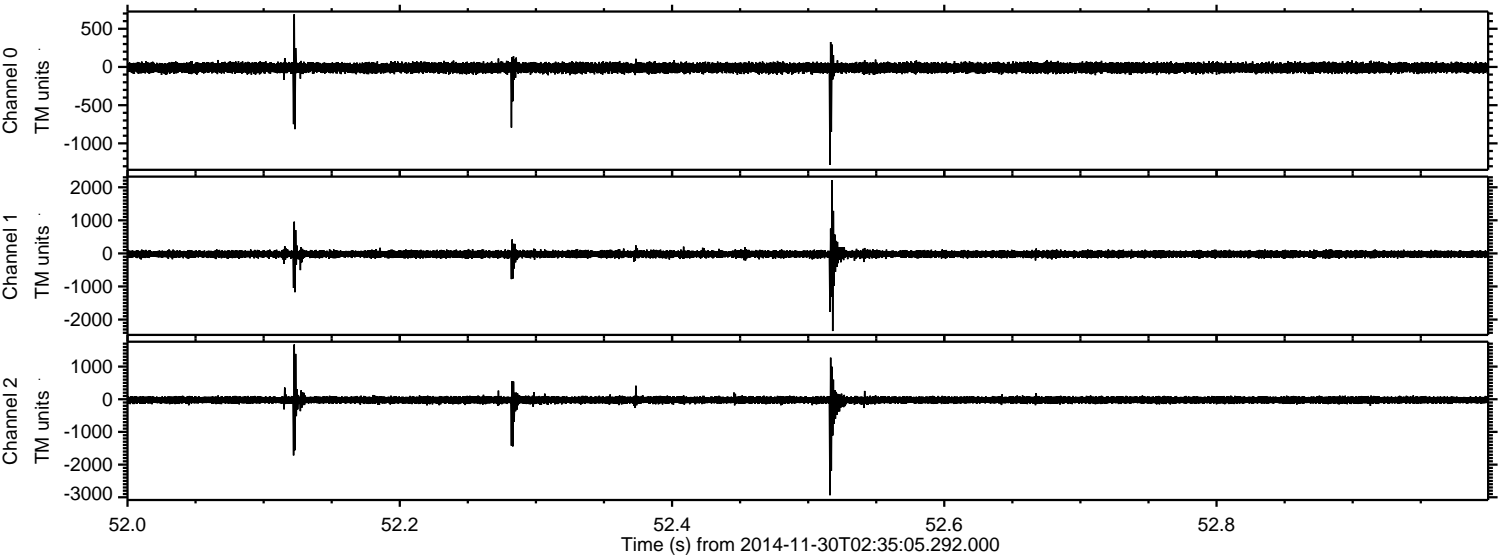


ELMAVAN 3D WAVEFORMS (Measured data sampled at 50 kHz) 49739 packets of 144 samples from 2014-11-30T02:35:05.292.000. Part 119/144

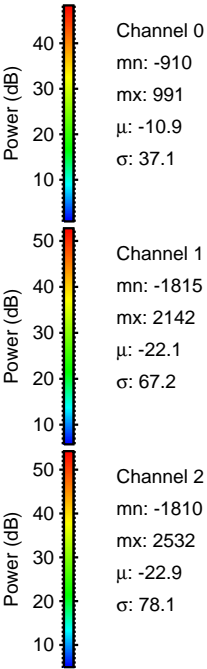
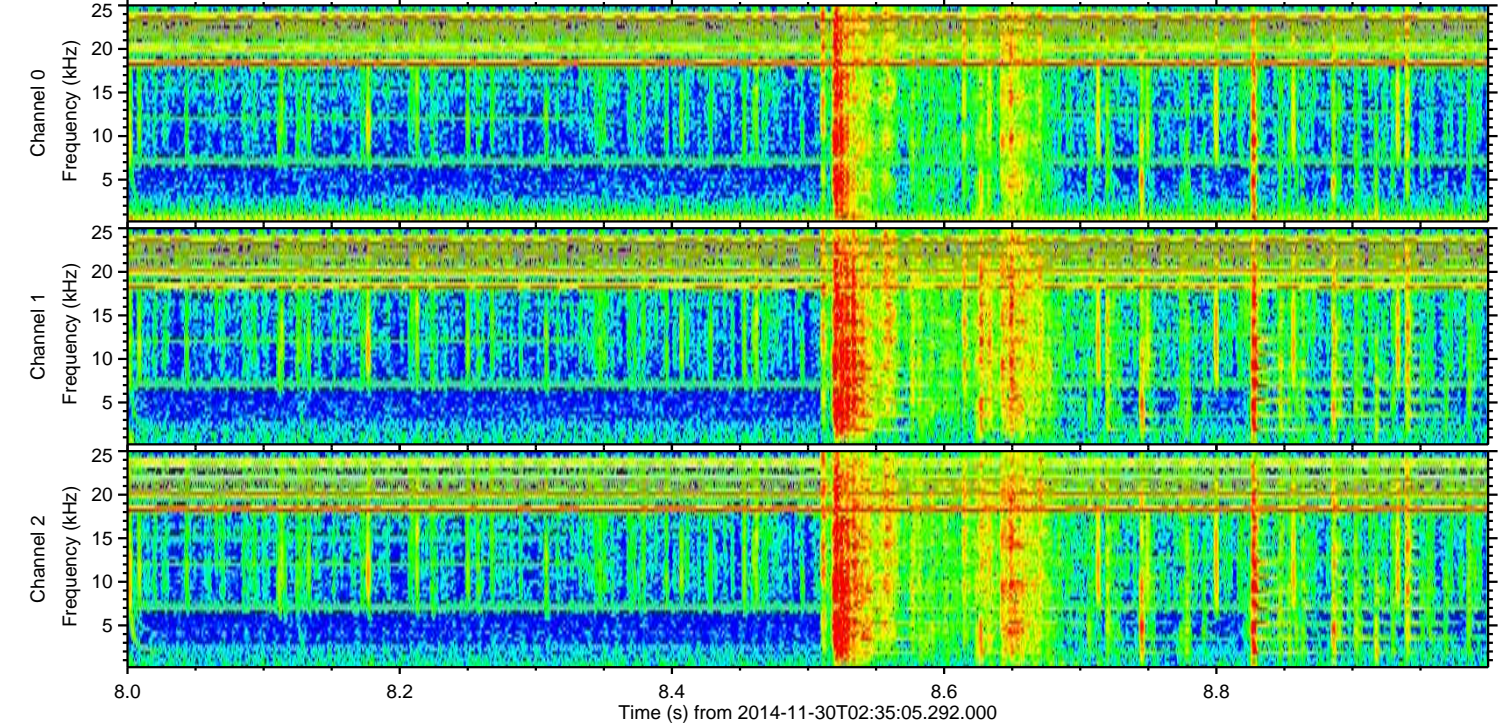
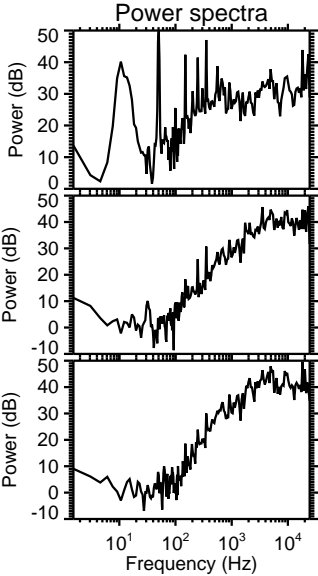
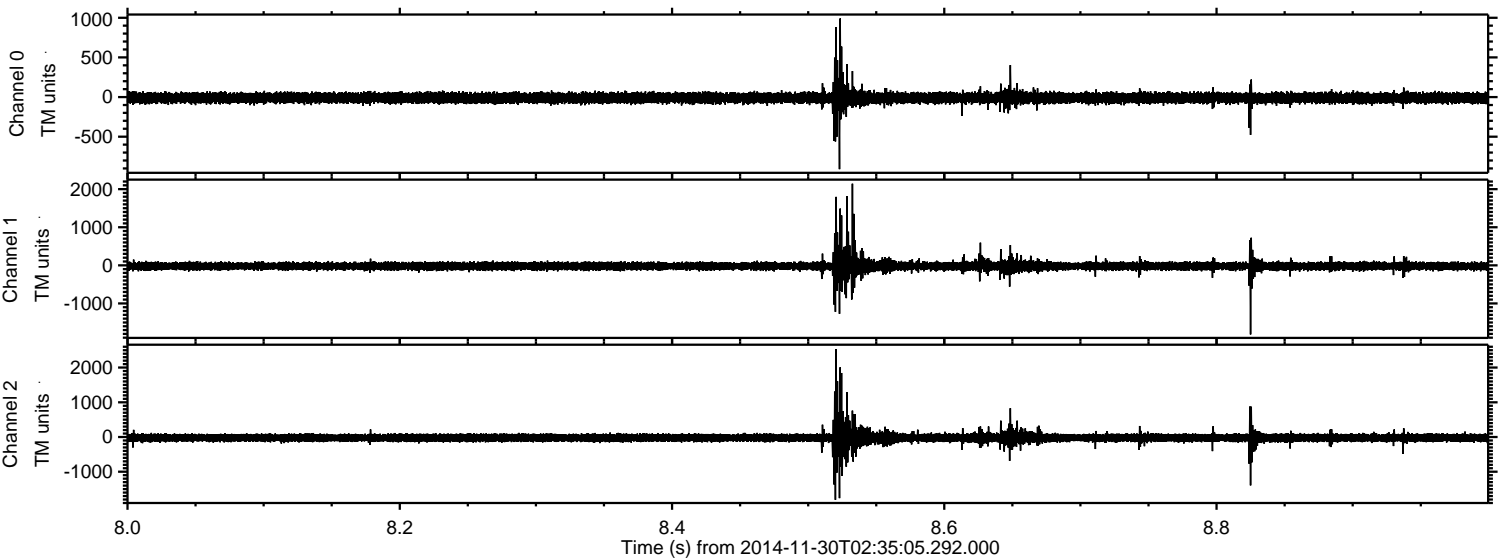
Processed Sun Nov 30 07:21:09 2014 by ELM ver.2012-10-06 from 001__elm20141130_023504__dat00.bin



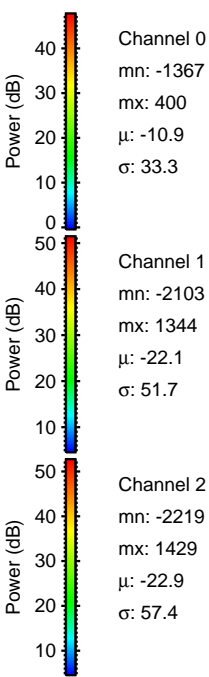
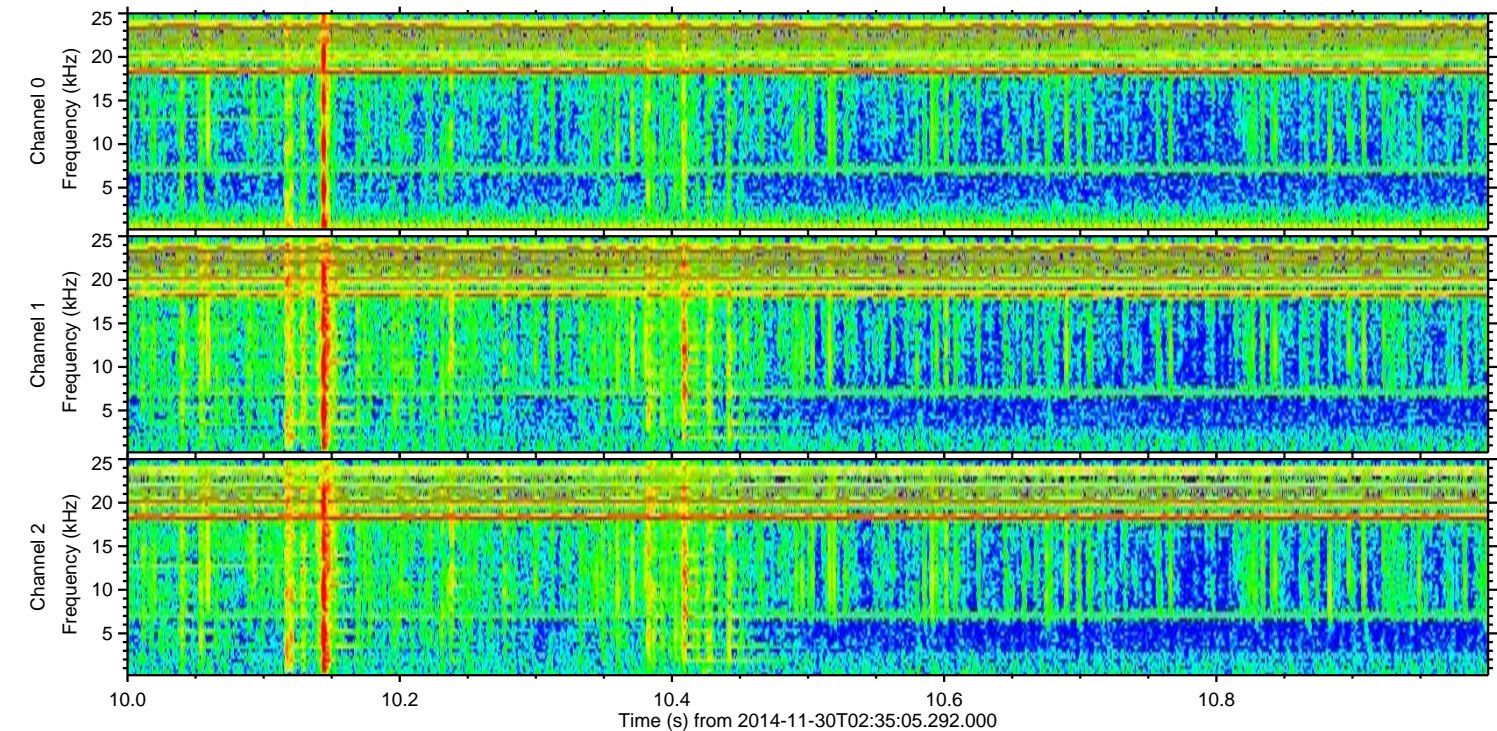
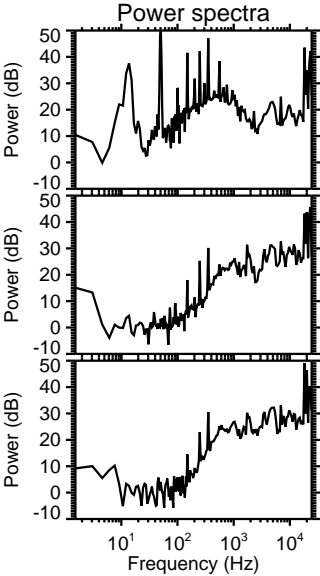
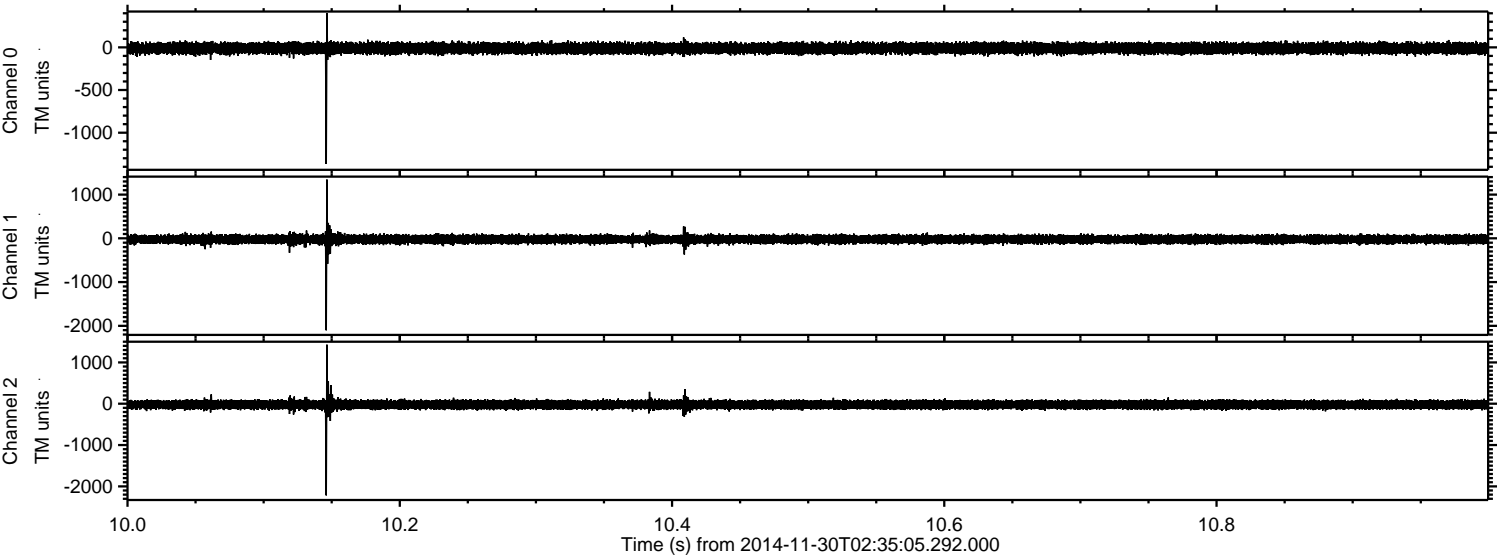
Processed Sun Nov 30 07:21:10 2014 by ELM ver.2012-10-06 from 001__elm20141130_023504__dat00.bin



Processed Sun Nov 30 07:21:11 2014 by ELM ver.2012-10-06 from 001_elm20141130_023504__dat00.bin

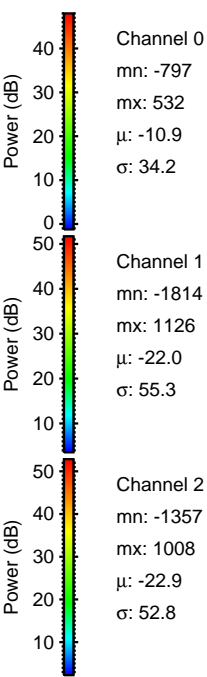
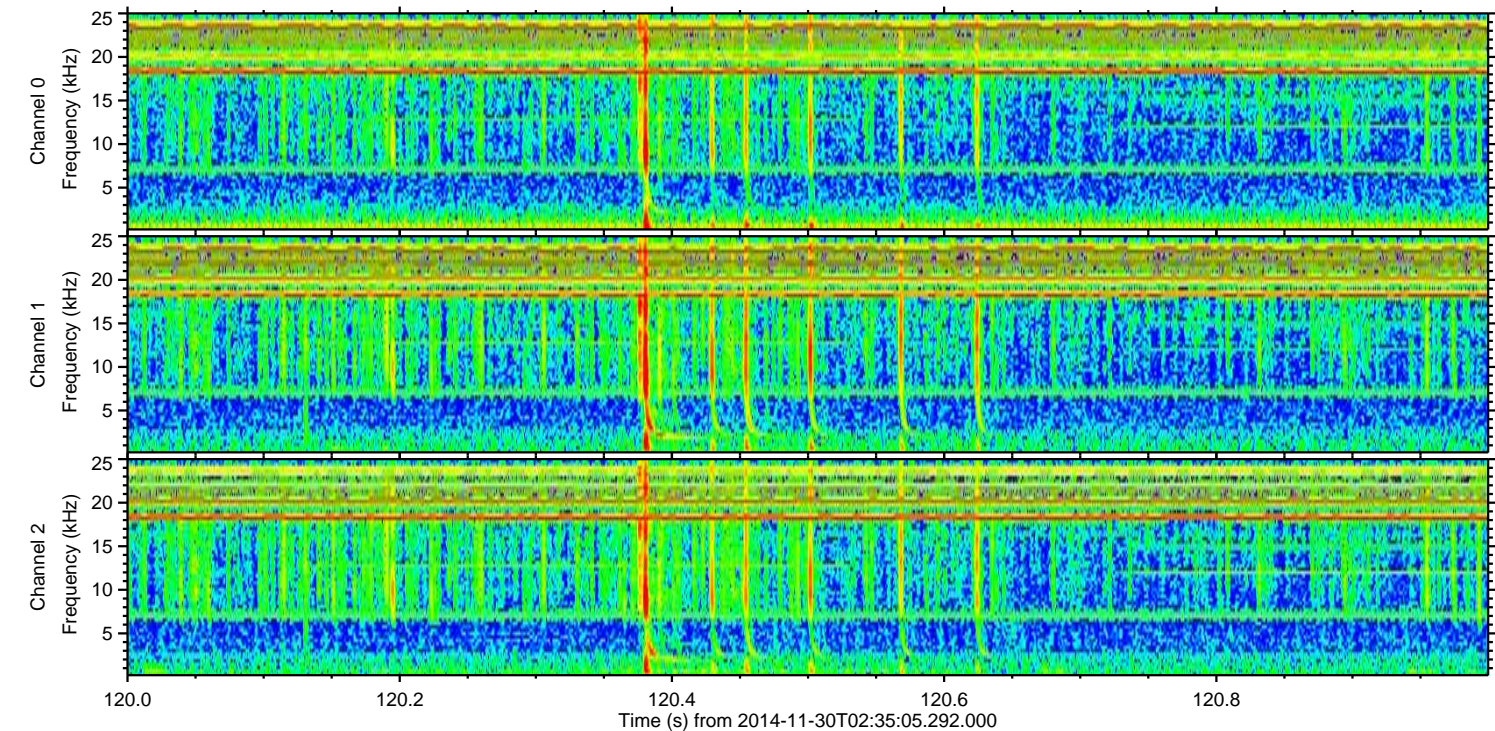
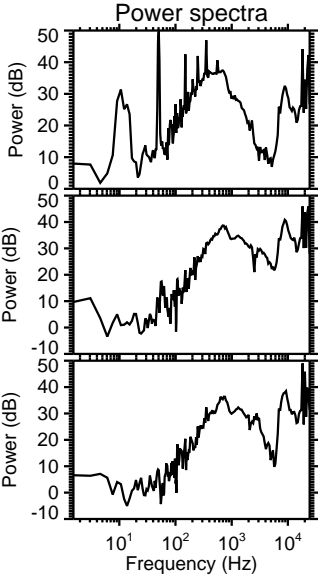
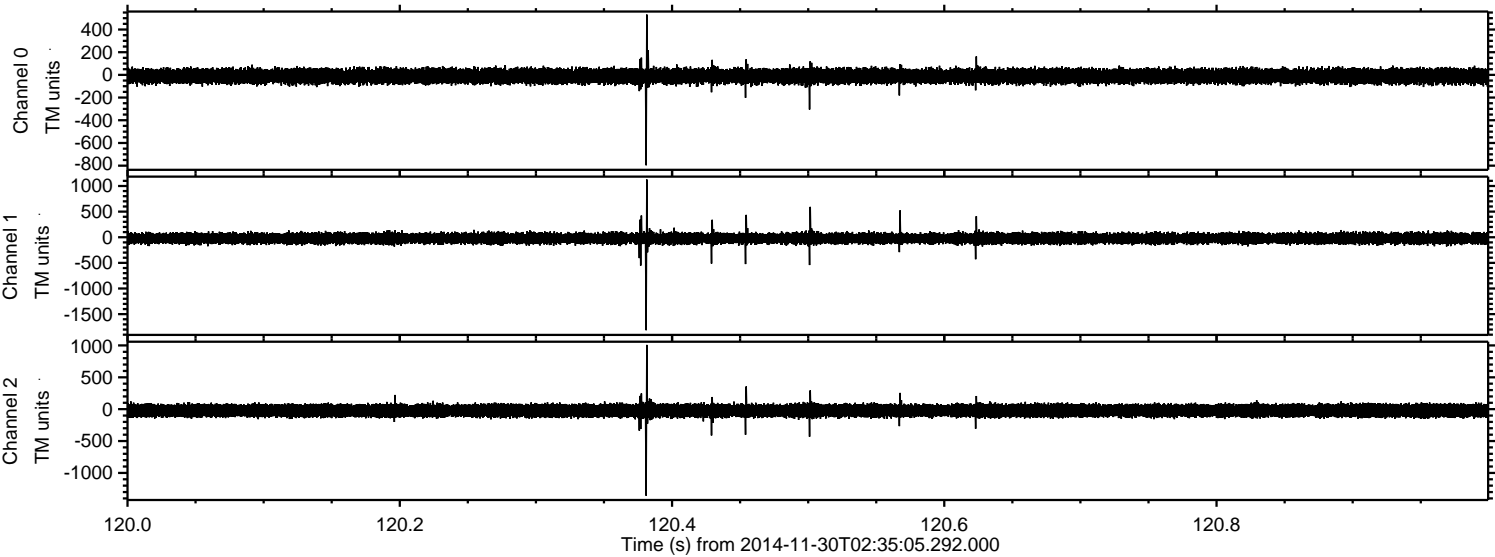


Processed Sun Nov 30 07:21:12 2014 by ELM ver.2012-10-06 from 001__elm20141130_023504__dat00.bin



ELMAVAN 3D WAVEFORMS (Measured data sampled at 50 kHz) 49739 packets of 144 samples from 2014-11-30T02:35:05.292.000. Part 121/144

Processed Sun Nov 30 07:21:13 2014 by ELM ver.2012-10-06 from 001__elm20141130_023504__dat00.bin

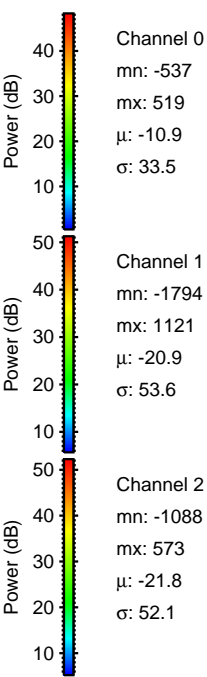
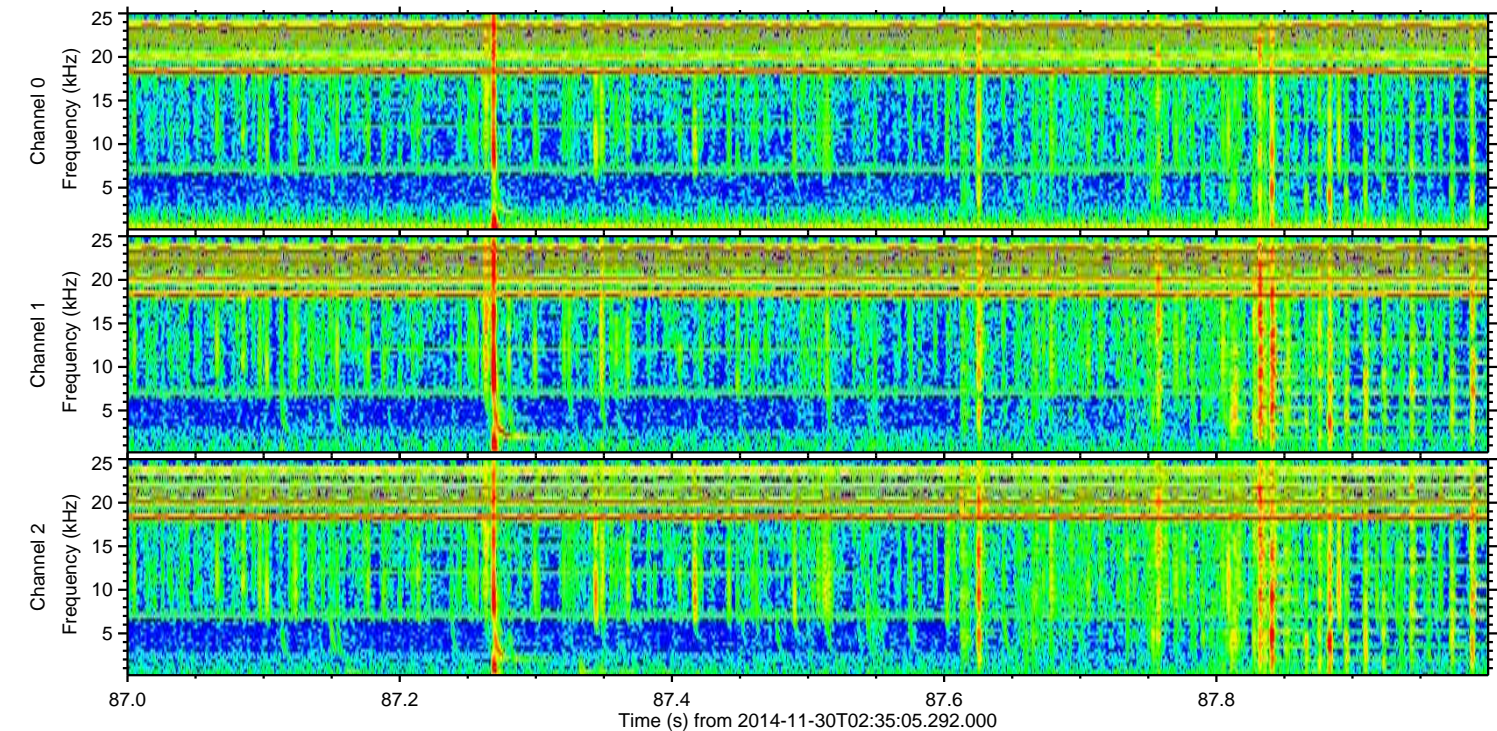
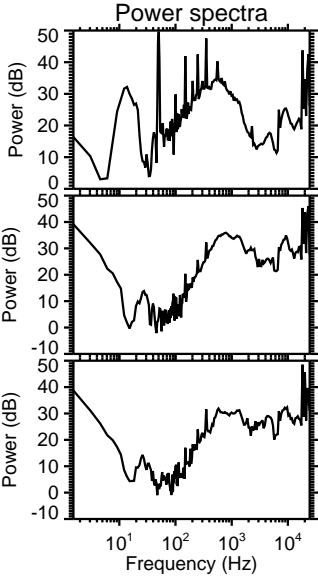
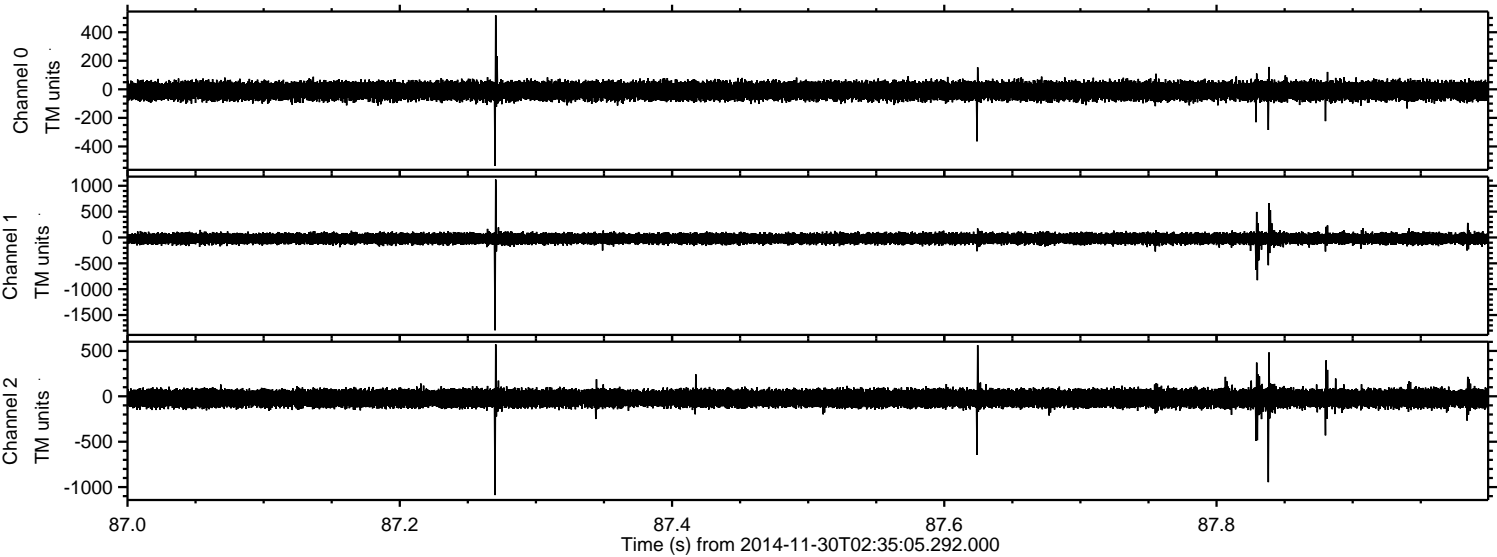


Channel 0
mn: -797
mx: 532
 μ : -10.9
 σ : 34.2

Channel 1
mn: -1814
mx: 1126
 μ : -22.0
 σ : 55.3

Channel 2
mn: -1357
mx: 1008
 μ : -22.9
 σ : 52.8

Processed Sun Nov 30 07:21:14 2014 by ELM ver.2012-10-06 from 001__elm20141130_023504__dat00.bin



Processed Sun Nov 30 07:21:15 2014 by ELM ver.2012-10-06 from 001__elm20141130_023504__dat00.bin

