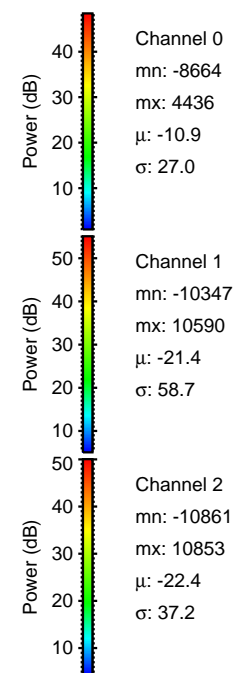
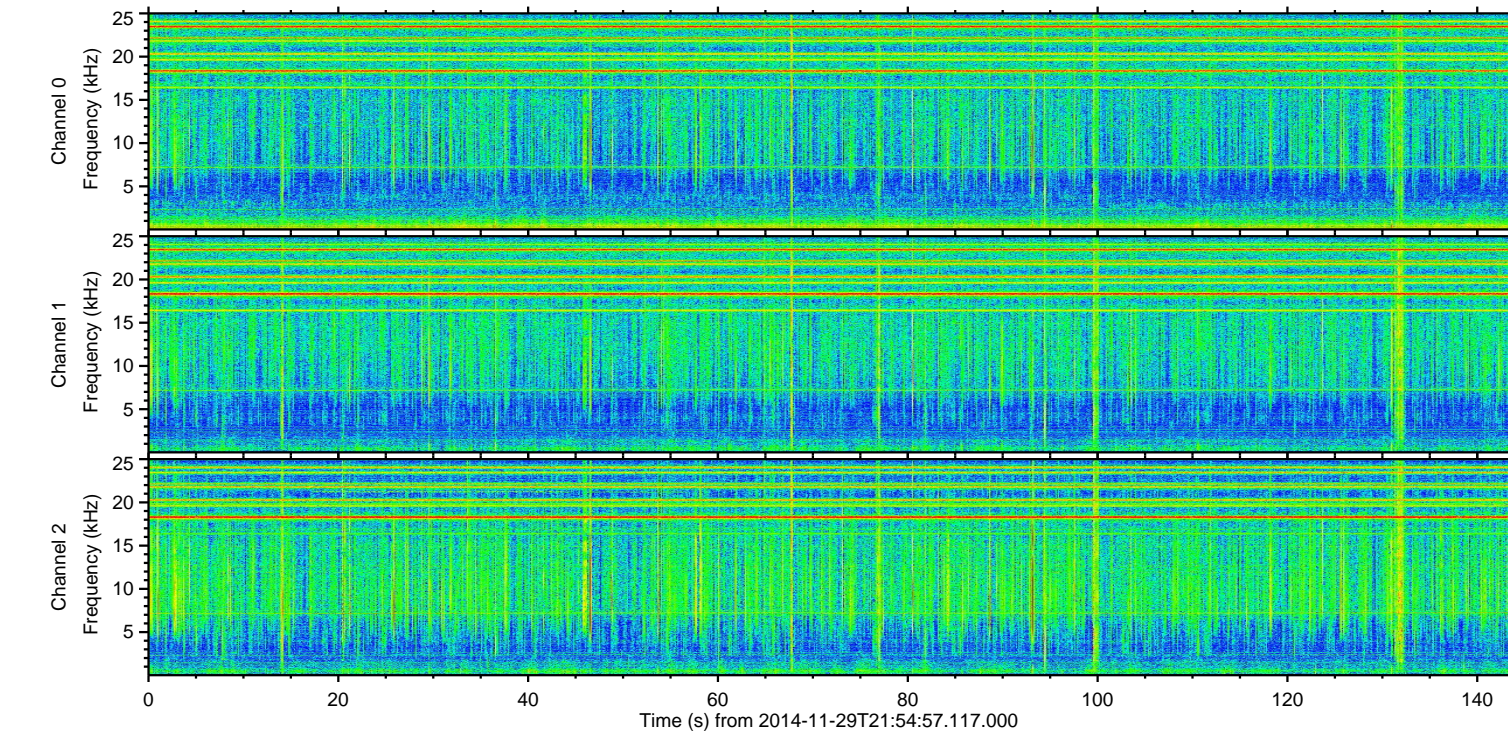
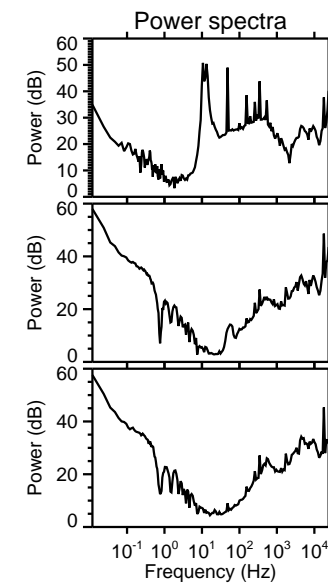
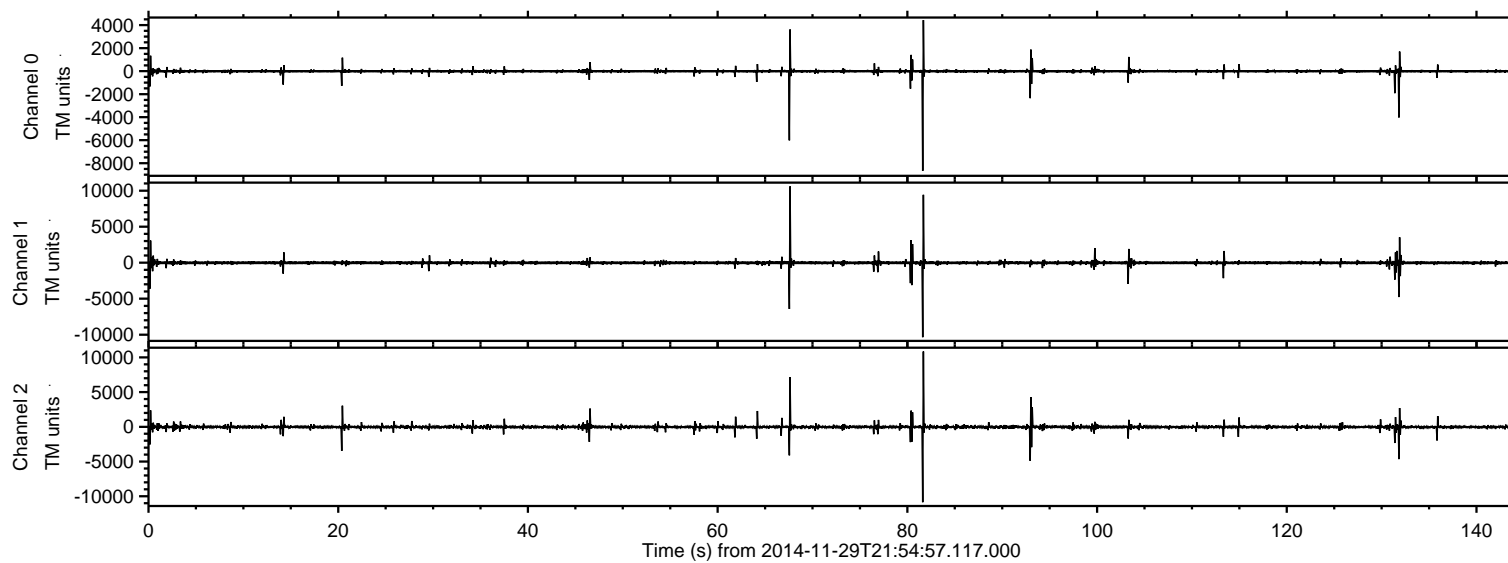


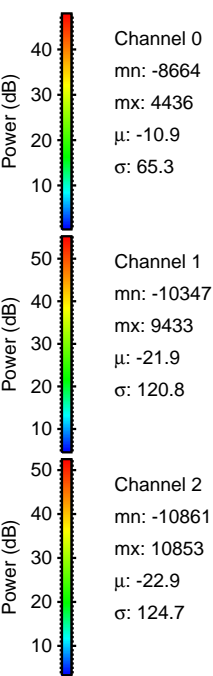
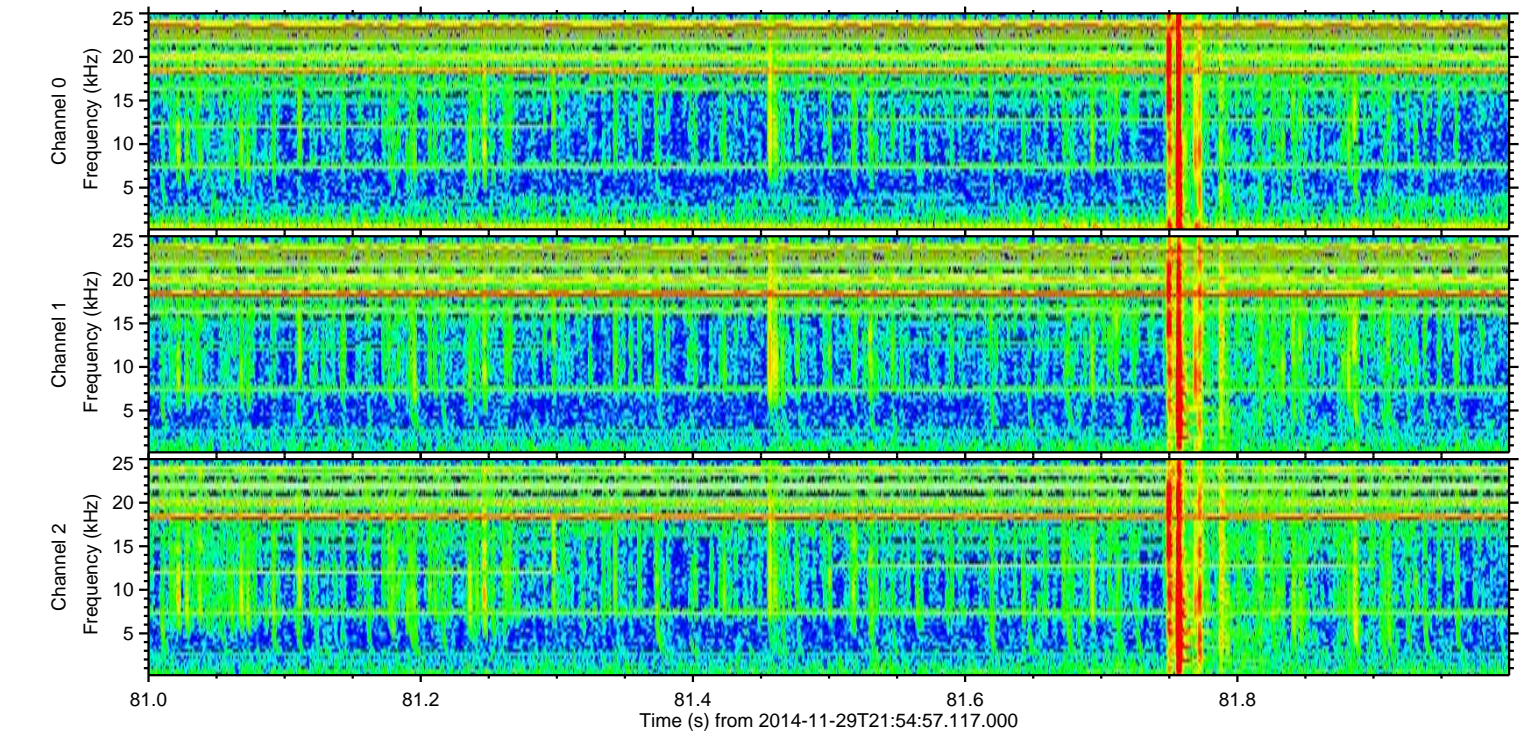
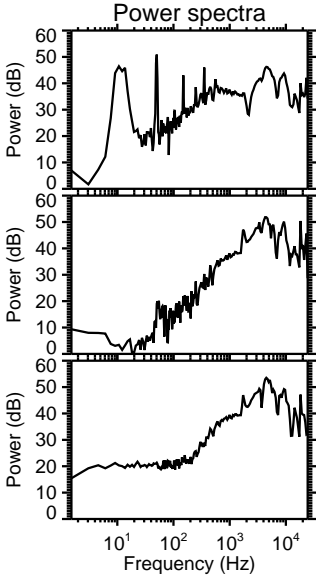
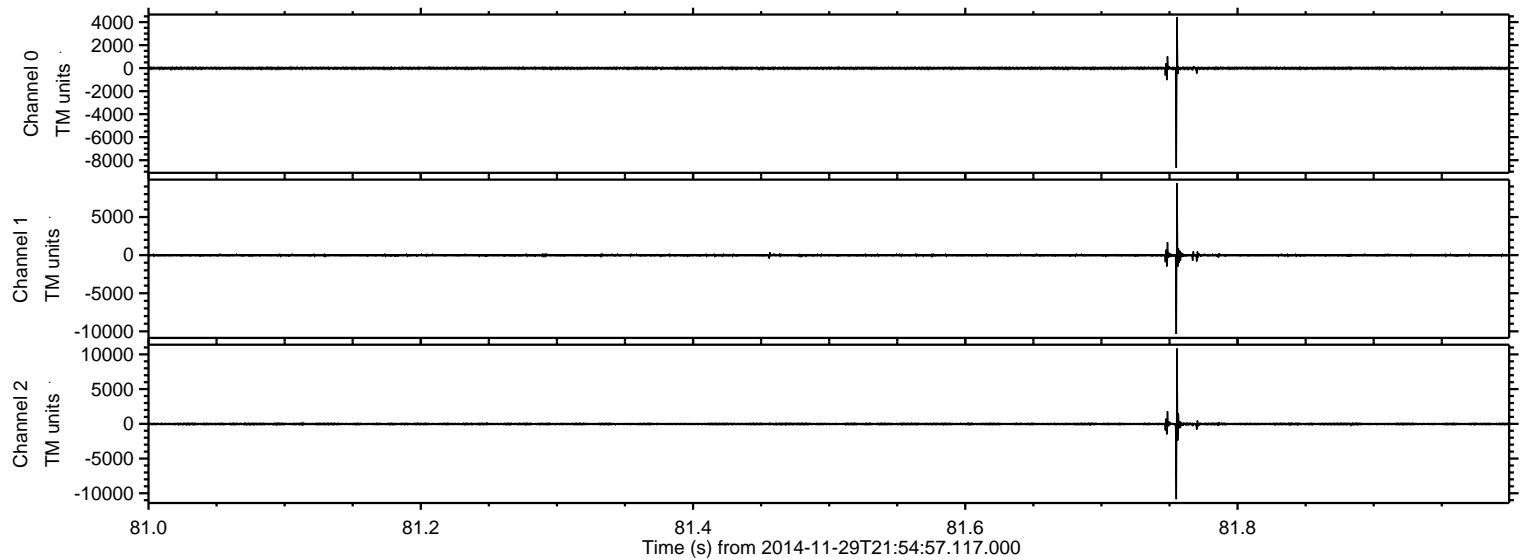
ELMAVAN 3D WAVEFORMS (Measured data sampled at 50 kHz) 49806 packets of 144 samples from 2014-11-29T21:54:57.117.000.

Processed Sun Nov 30 05:59:25 2014 by ELM ver.2012-10-06 from 001__elm20141129_215456__dat00.bin

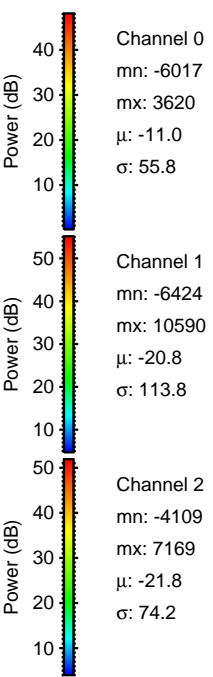
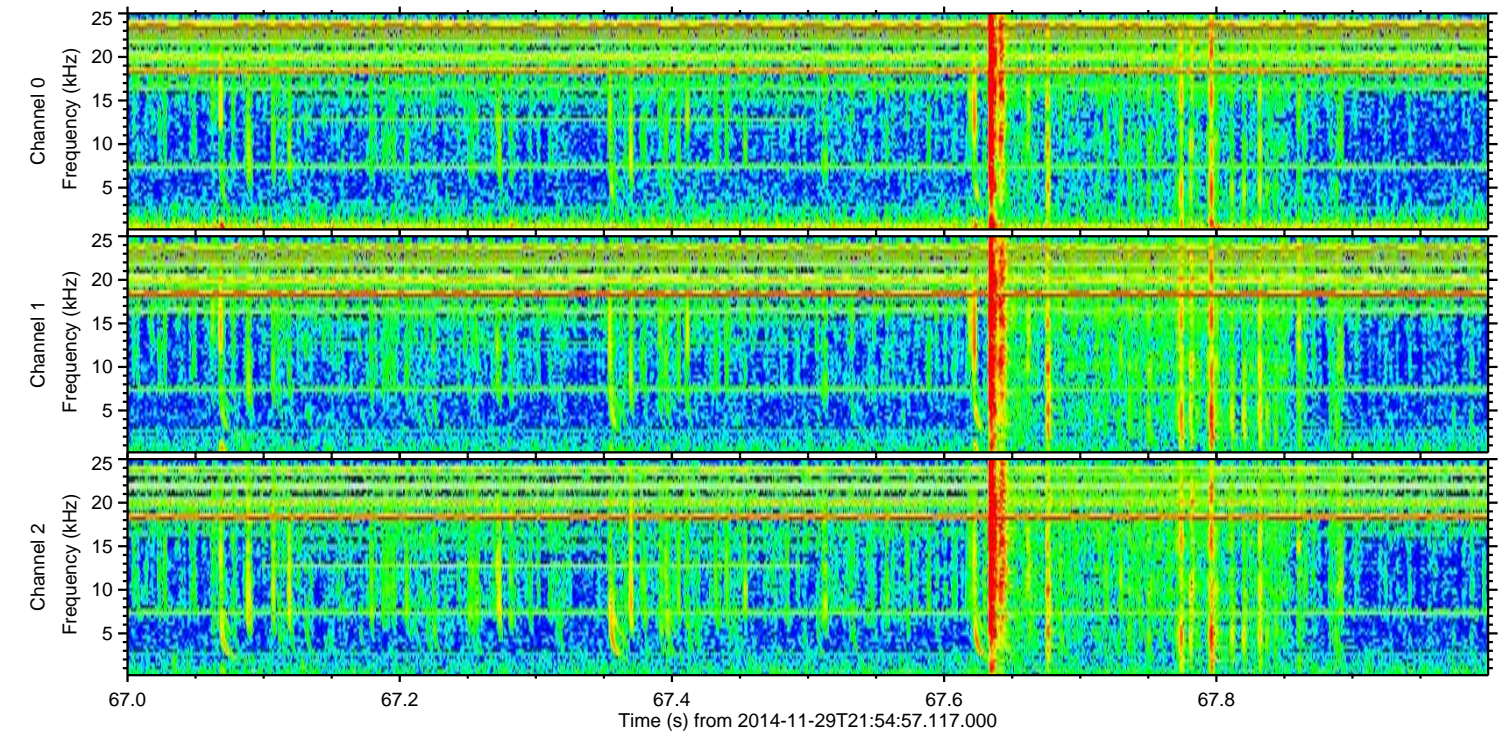
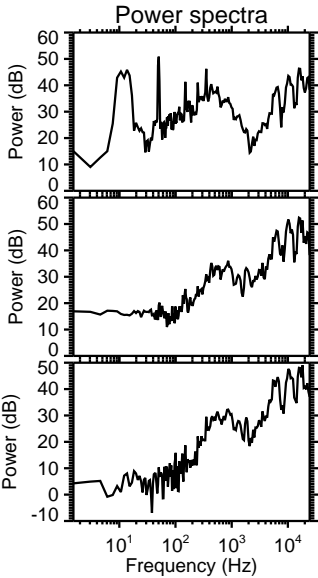
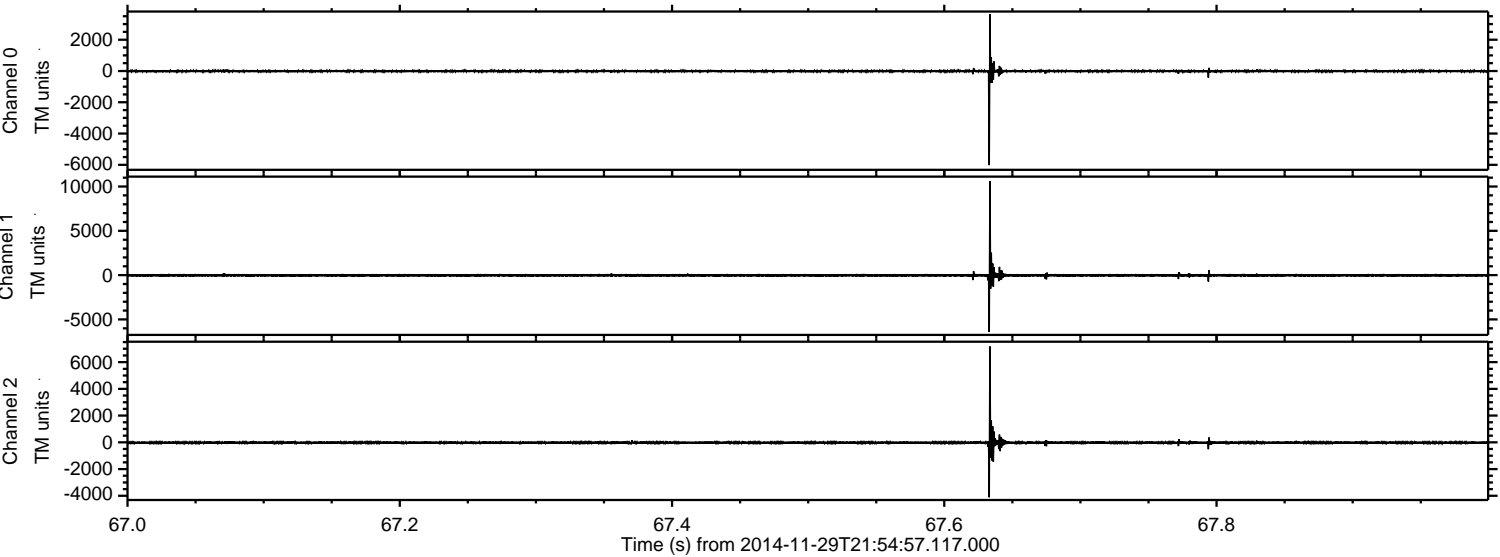


ELMAVAN 3D WAVEFORMS (Measured data sampled at 50 kHz) 49806 packets of 144 samples from 2014-11-29T21:54:57.117.000. Part 82/144

Processed Sun Nov 30 05:59:43 2014 by ELM ver.2012-10-06 from 001__elm20141129_215456__dat00.bin

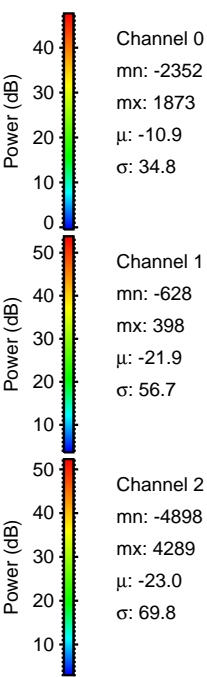
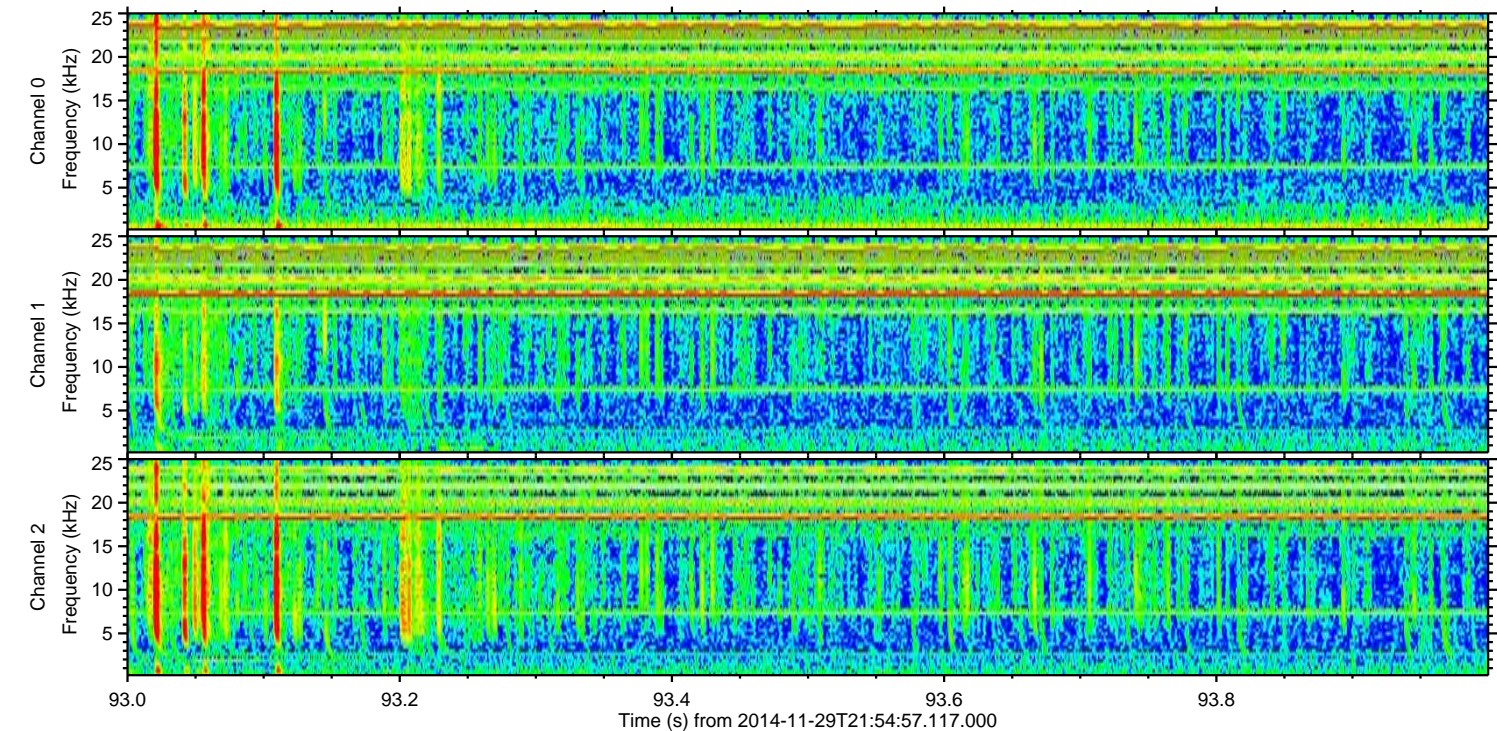
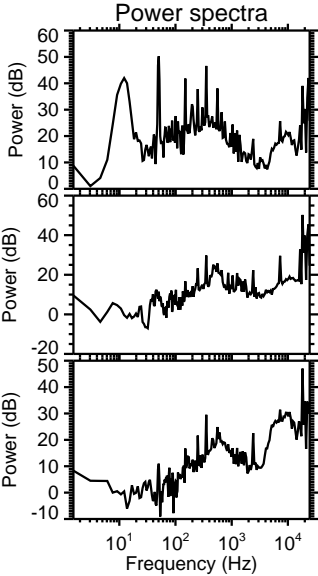
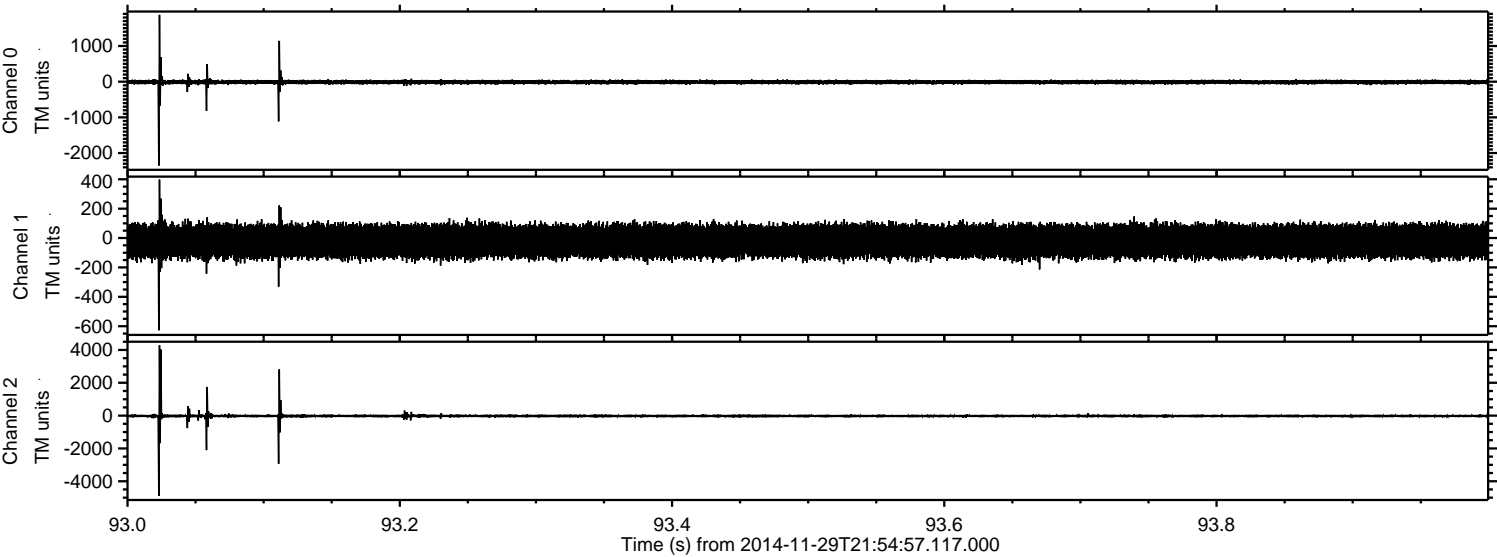


Processed Sun Nov 30 05:59:44 2014 by ELM ver.2012-10-06 from 001__elm20141129_215456__dat00.bin



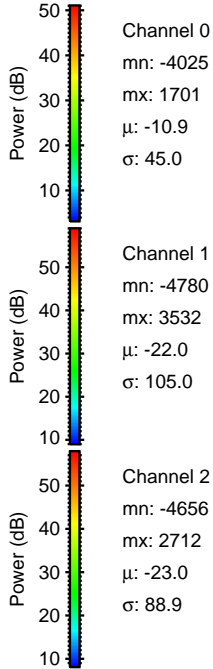
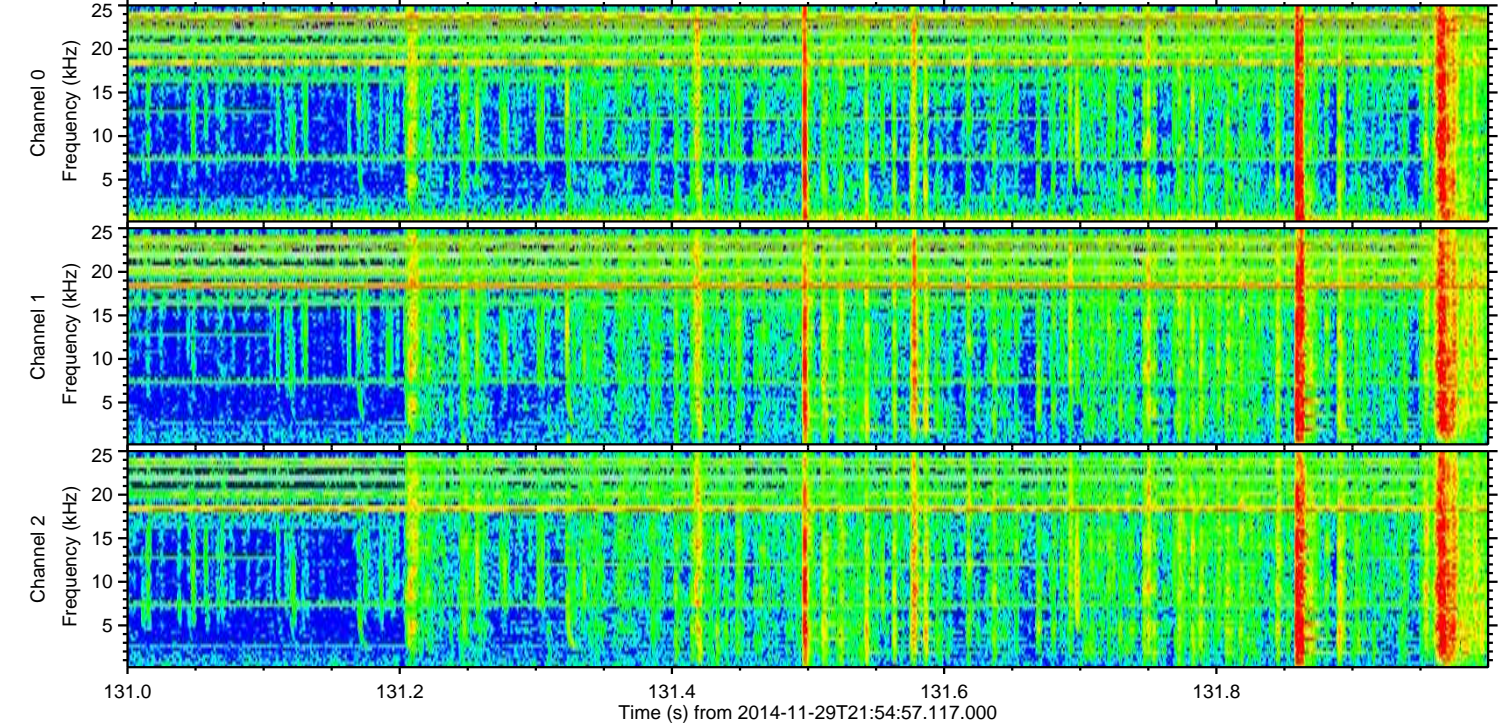
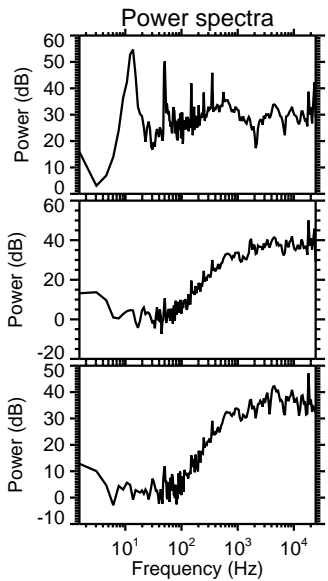
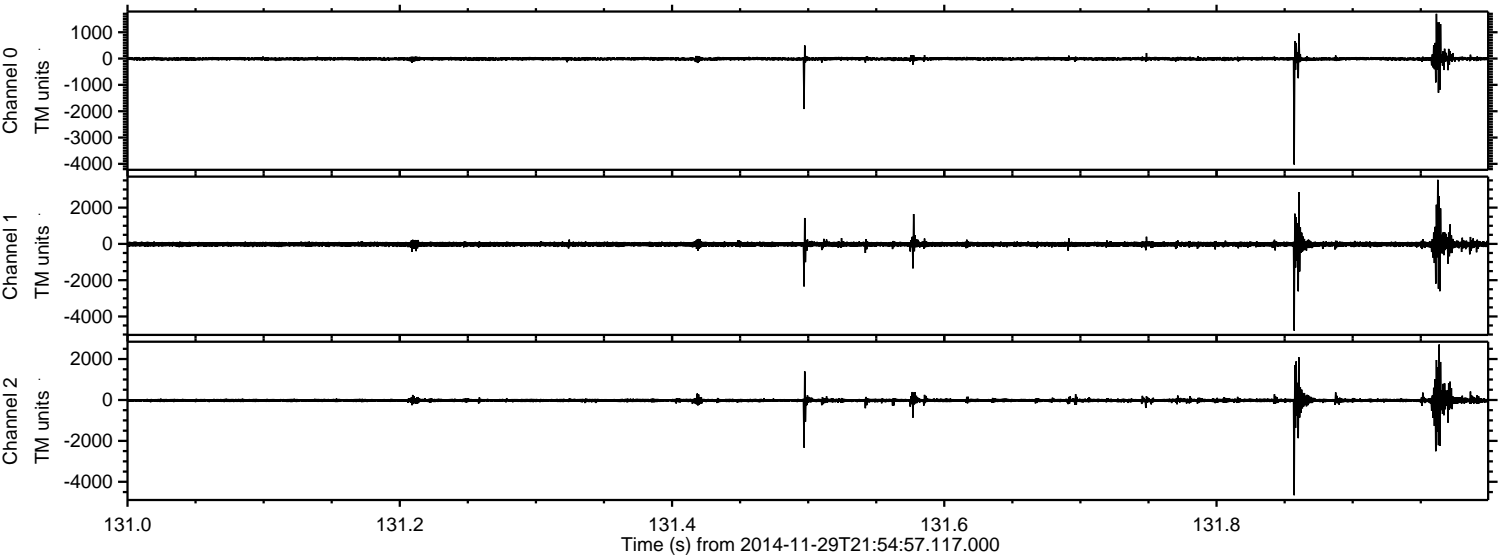
ELMAVAN 3D WAVEFORMS (Measured data sampled at 50 kHz) 49806 packets of 144 samples from 2014-11-29T21:54:57.117.000. Part 94/144

Processed Sun Nov 30 05:59:45 2014 by ELM ver.2012-10-06 from 001__elm20141129_215456__dat00.bin



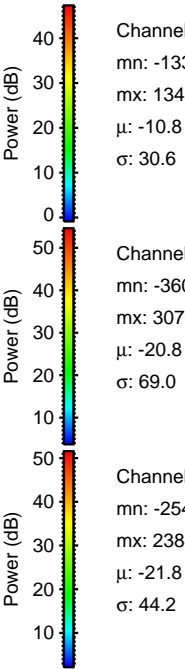
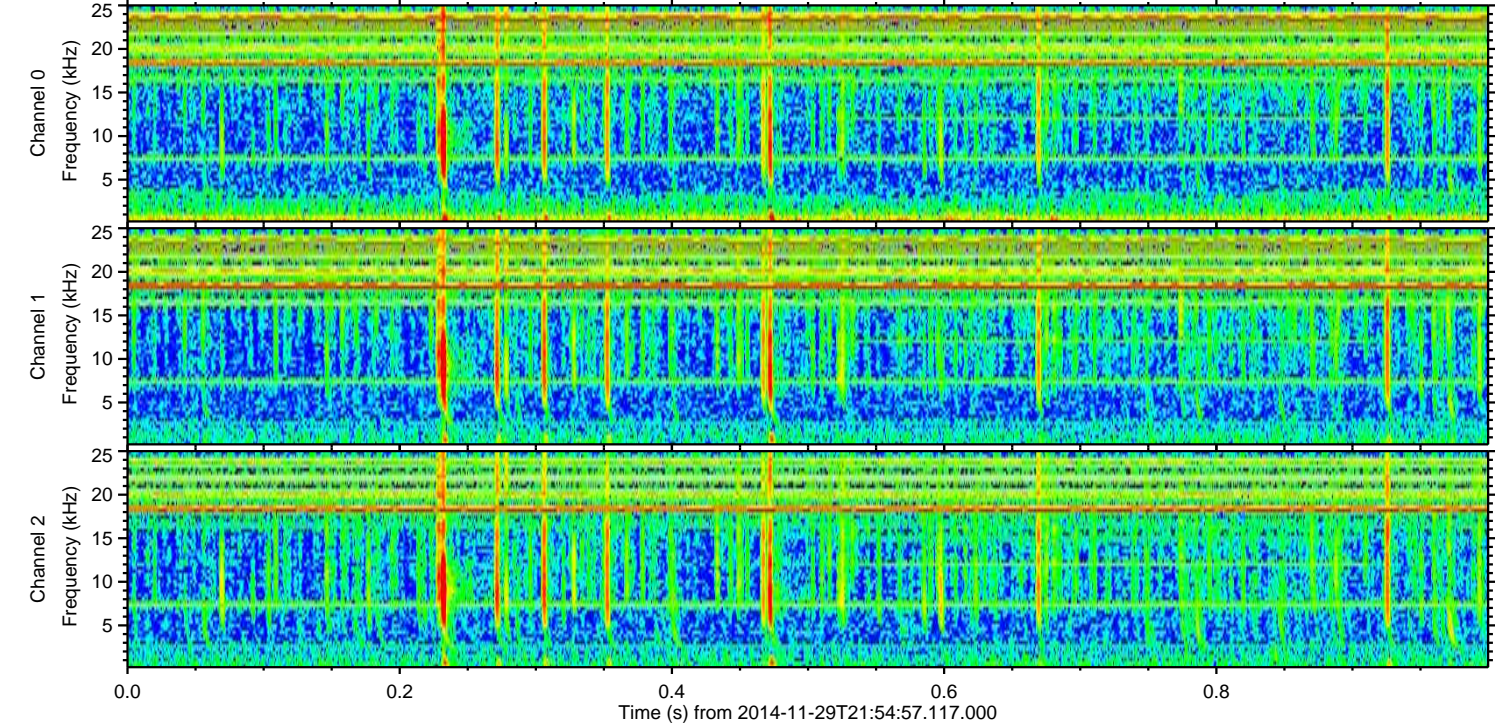
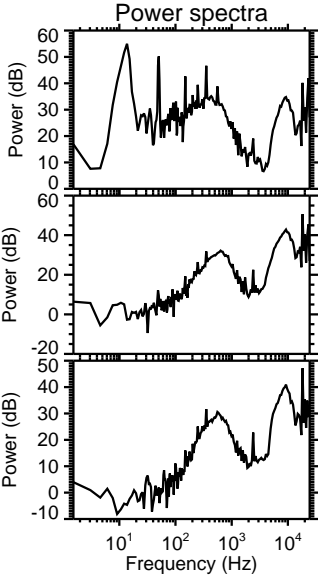
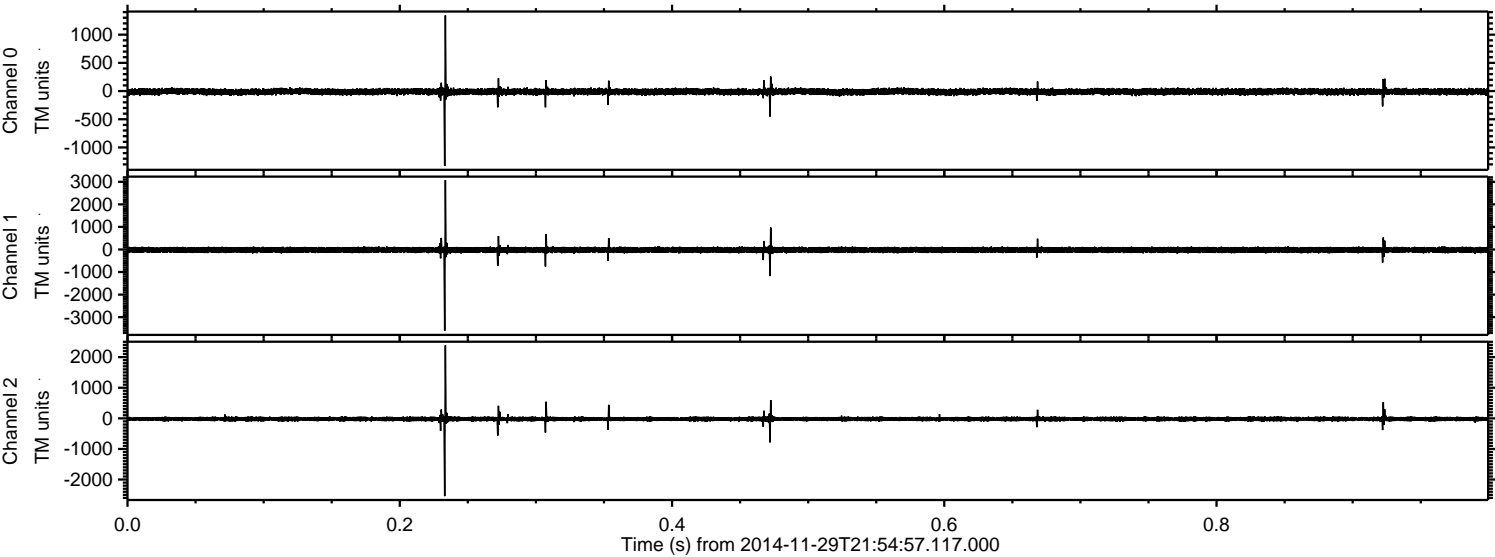
ELMAVAN 3D WAVEFORMS (Measured data sampled at 50 kHz) 49806 packets of 144 samples from 2014-11-29T21:54:57.117.000. Part 132/144

Processed Sun Nov 30 05:59:46 2014 by ELM ver.2012-10-06 from 001__elm20141129_215456__dat00.bin



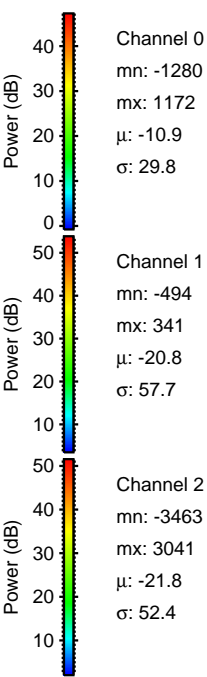
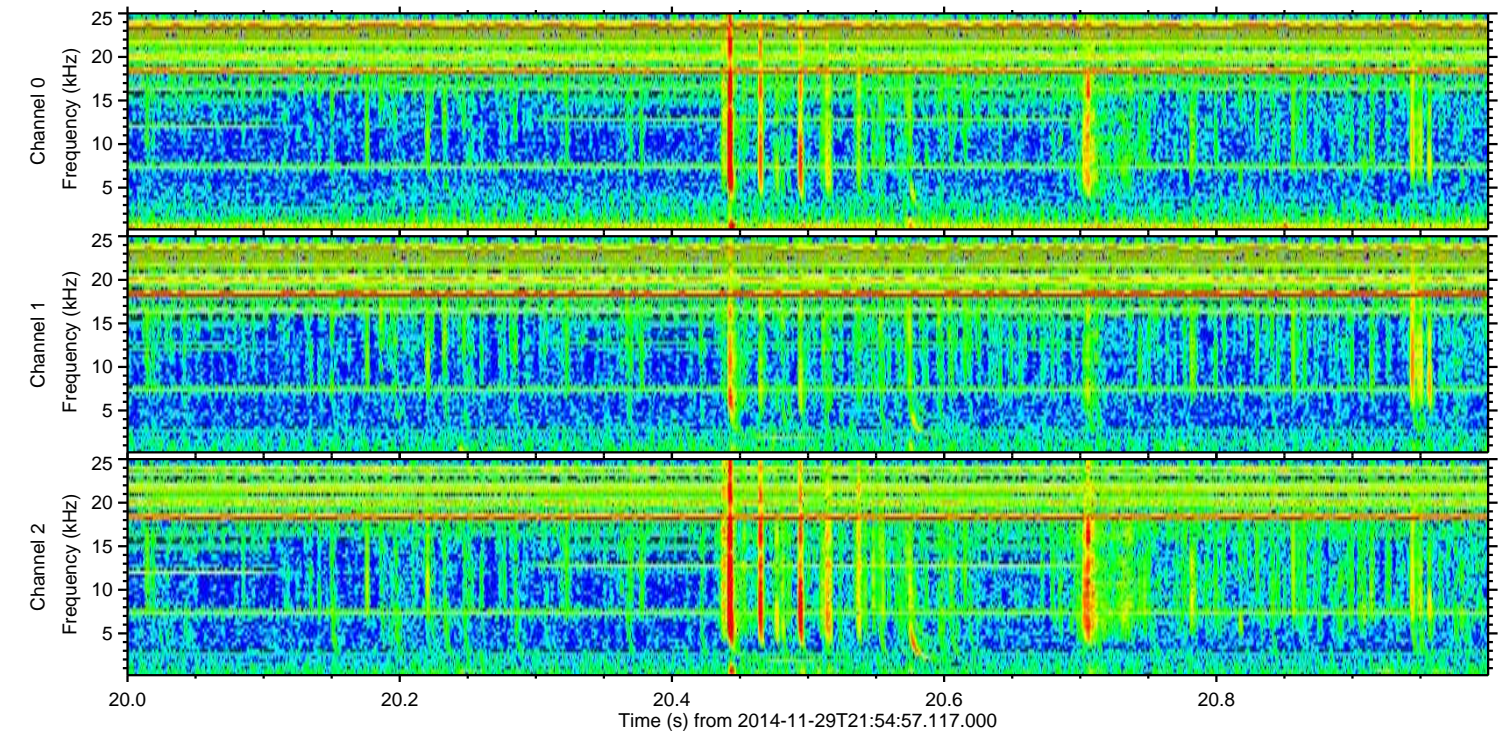
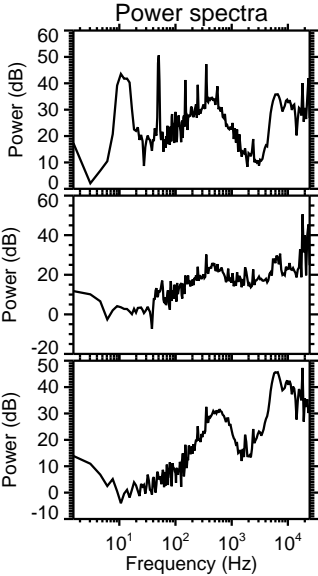
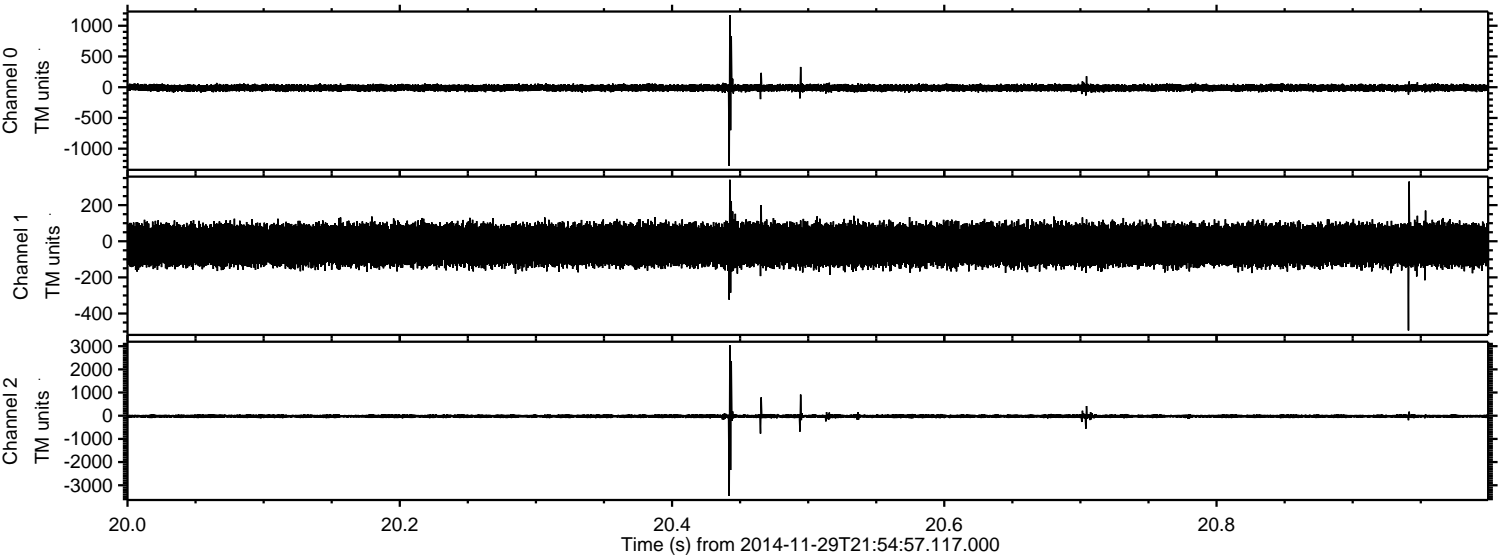
ELMAVAN 3D WAVEFORMS (Measured data sampled at 50 kHz) 49806 packets of 144 samples from 2014-11-29T21:54:57.117.000. Part 1/144

Processed Sun Nov 30 05:59:47 2014 by ELM ver.2012-10-06 from 001__elm20141129_215456__dat00.bin



ELMAVAN 3D WAVEFORMS (Measured data sampled at 50 kHz) 49806 packets of 144 samples from 2014-11-29T21:54:57.117.000. Part 21/144

Processed Sun Nov 30 05:59:48 2014 by ELM ver.2012-10-06 from 001__elm20141129_215456__dat00.bin

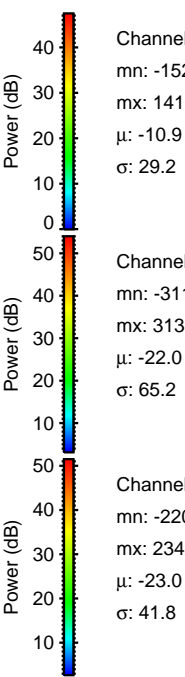
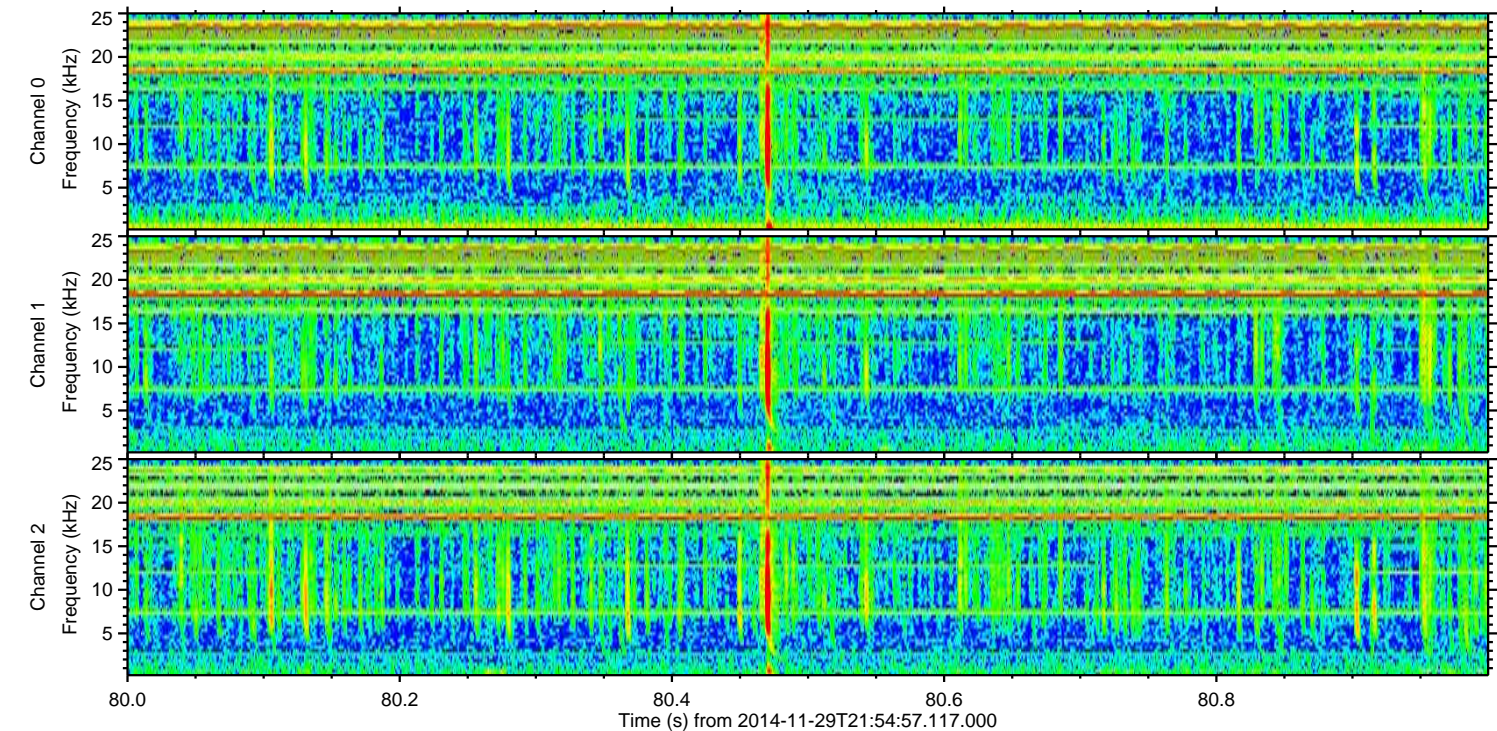
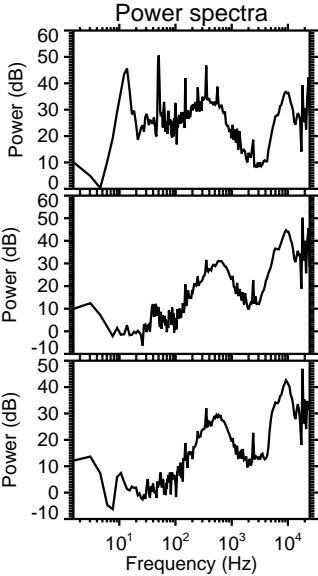
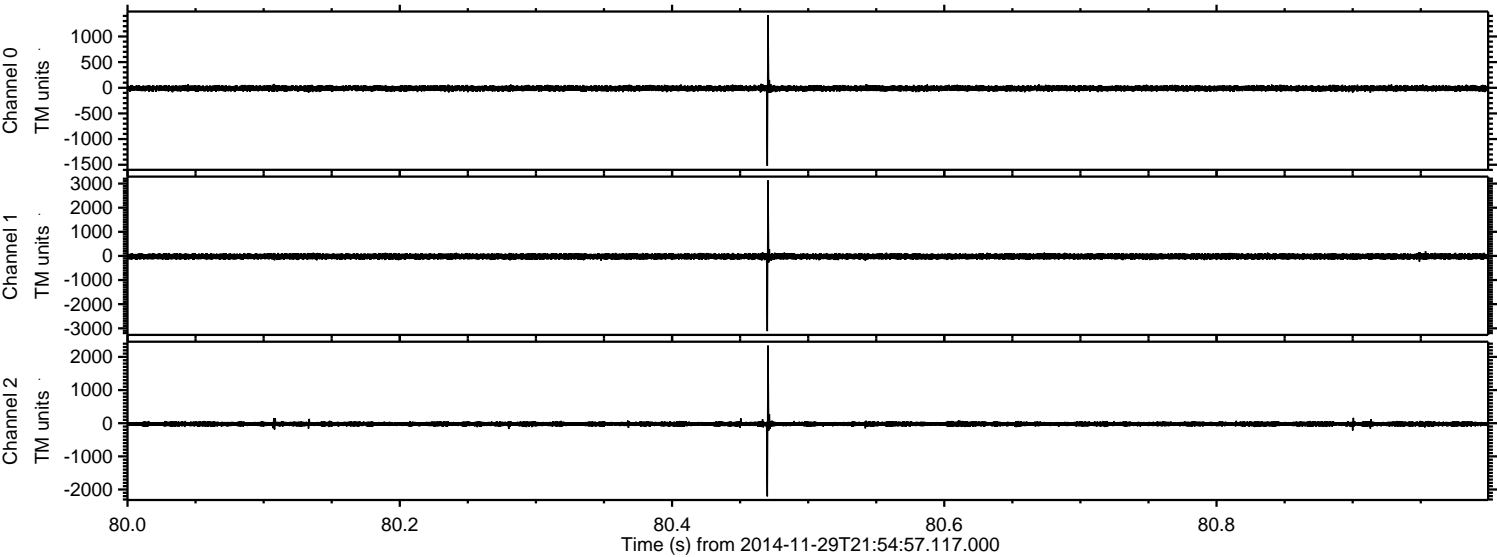


Channel 0
mn: -1280
mx: 1172
 μ : -10.9
 σ : 29.8

Channel 1
mn: -494
mx: 341
 μ : -20.8
 σ : 57.7

Channel 2
mn: -3463
mx: 3041
 μ : -21.8
 σ : 52.4

Processed Sun Nov 30 05:59:49 2014 by ELM ver.2012-10-06 from 001__elm20141129_215456__dat00.bin



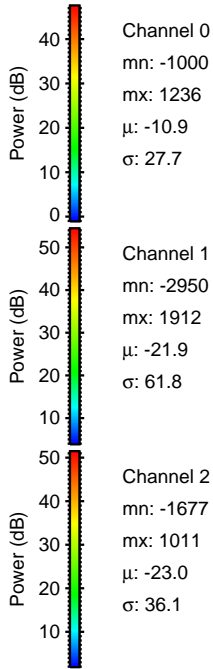
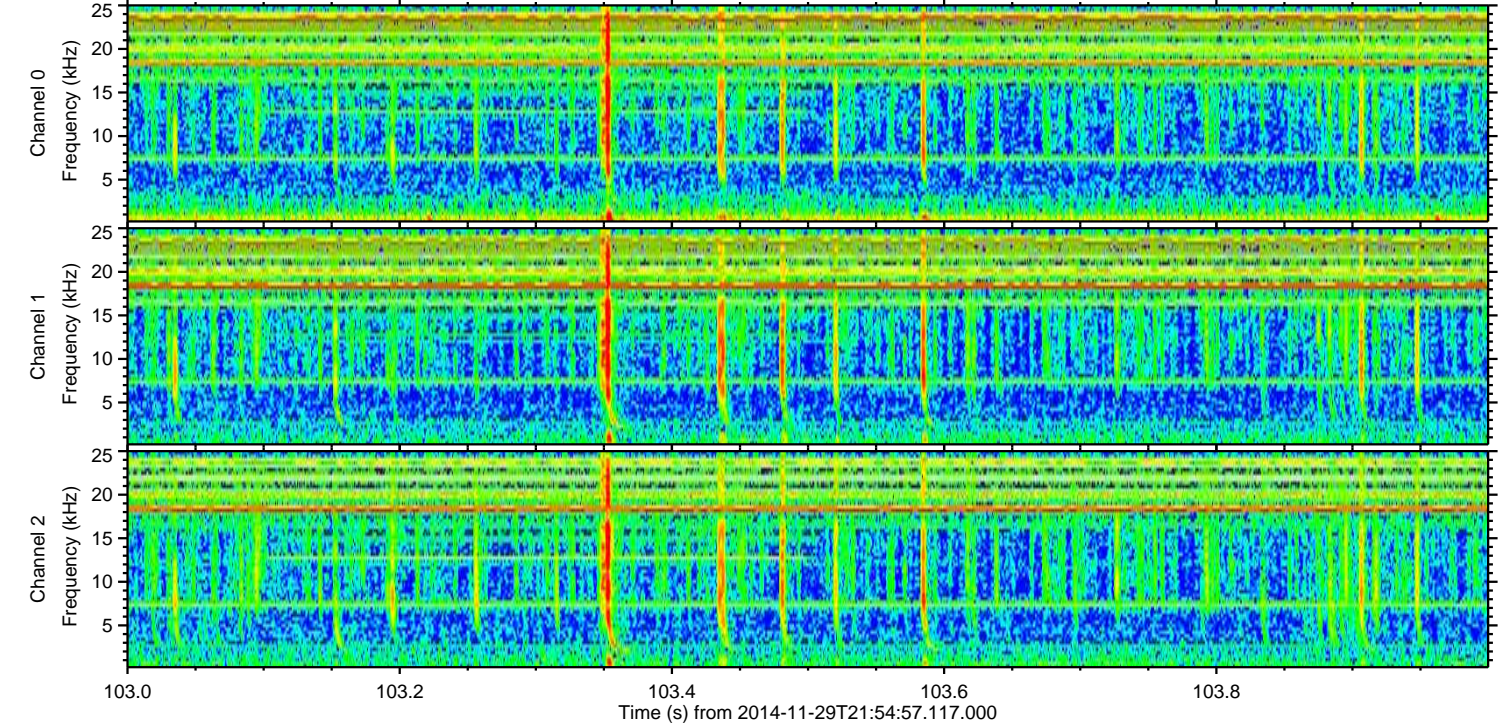
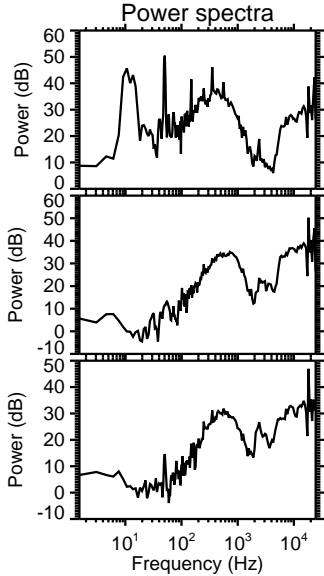
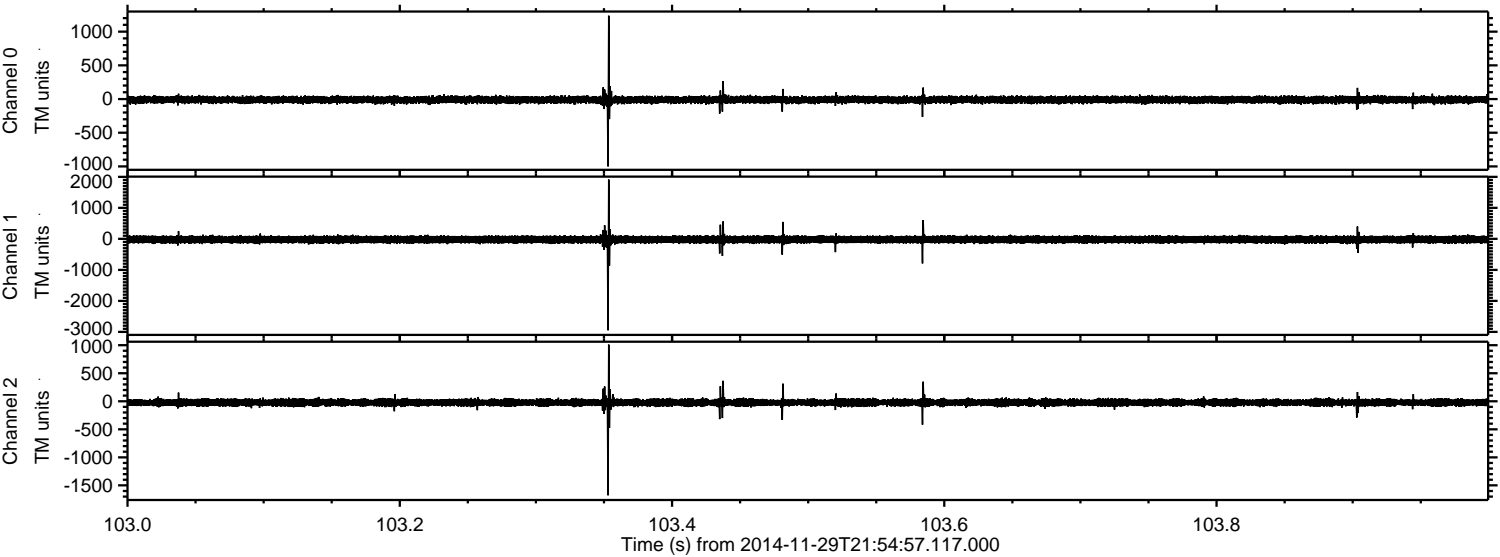
Channel 0
mn: -1523
mx: 1415
 μ : -10.9
 σ : 29.2

Channel 1
mn: -3118
mx: 3131
 μ : -22.0
 σ : 65.2

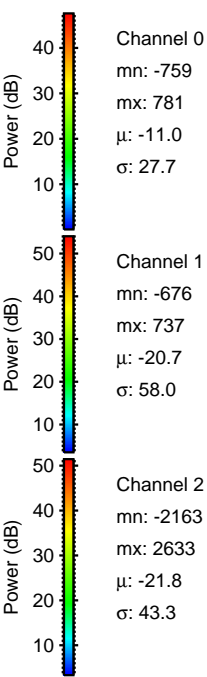
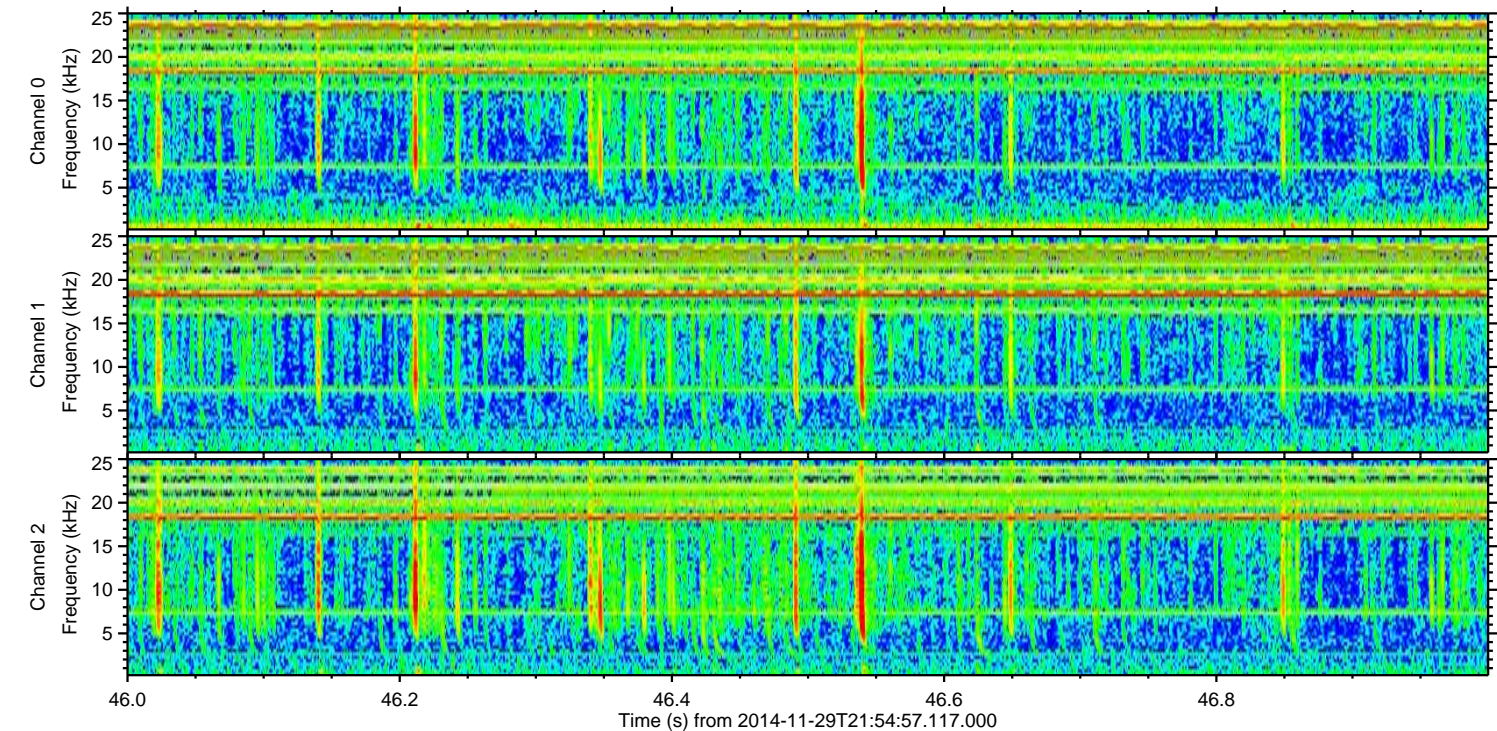
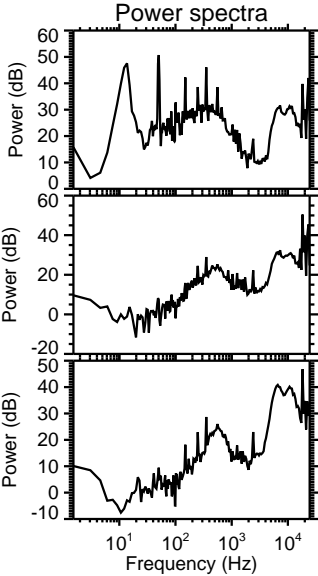
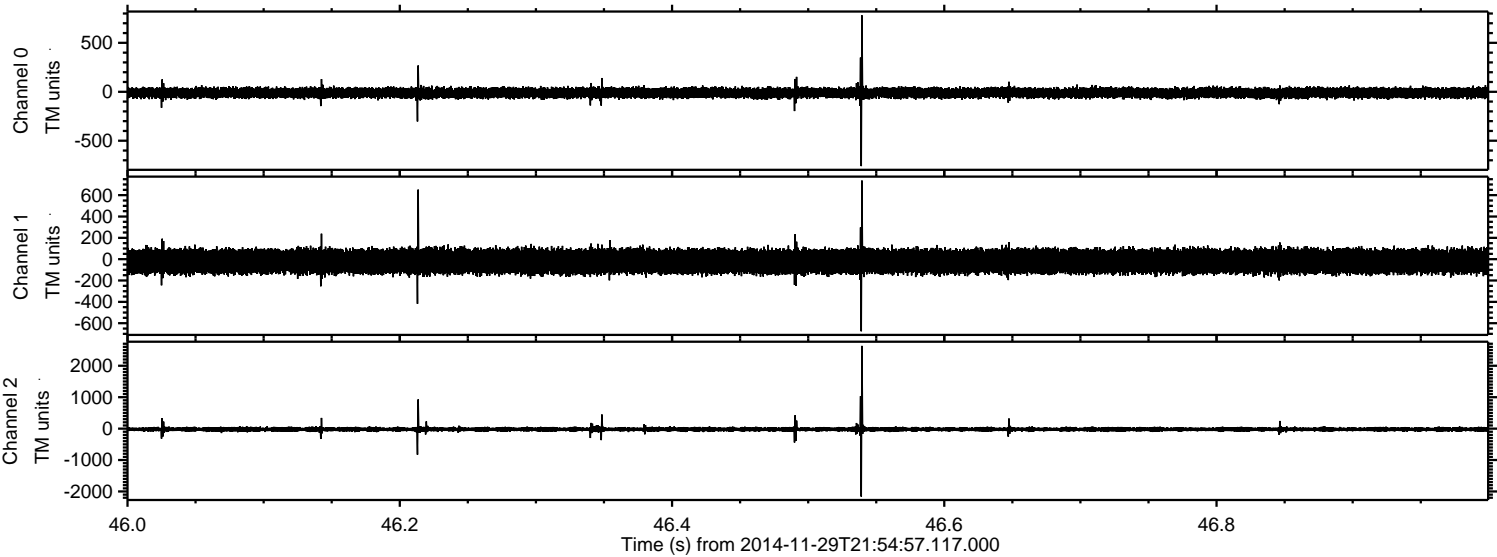
Channel 2
mn: -2206
mx: 2342
 μ : -23.0
 σ : 41.8

ELMAVAN 3D WAVEFORMS (Measured data sampled at 50 kHz) 49806 packets of 144 samples from 2014-11-29T21:54:57.117.000. Part 104/144

Processed Sun Nov 30 05:59:50 2014 by ELM ver.2012-10-06 from 001__elm20141129_215456__dat00.bin



Processed Sun Nov 30 05:59:51 2014 by ELM ver.2012-10-06 from 001__elm20141129_215456__dat00.bin



ELMAVAN 3D WAVEFORMS (Measured data sampled at 50 kHz) 49806 packets of 144 samples from 2014-11-29T21:54:57.117.000. Part 107/144

