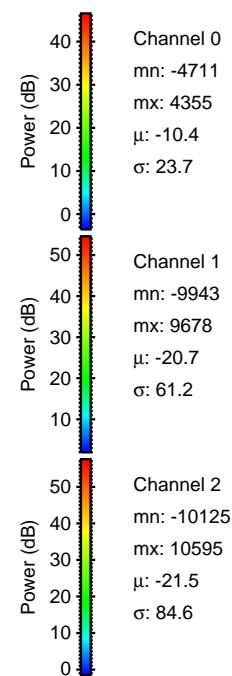
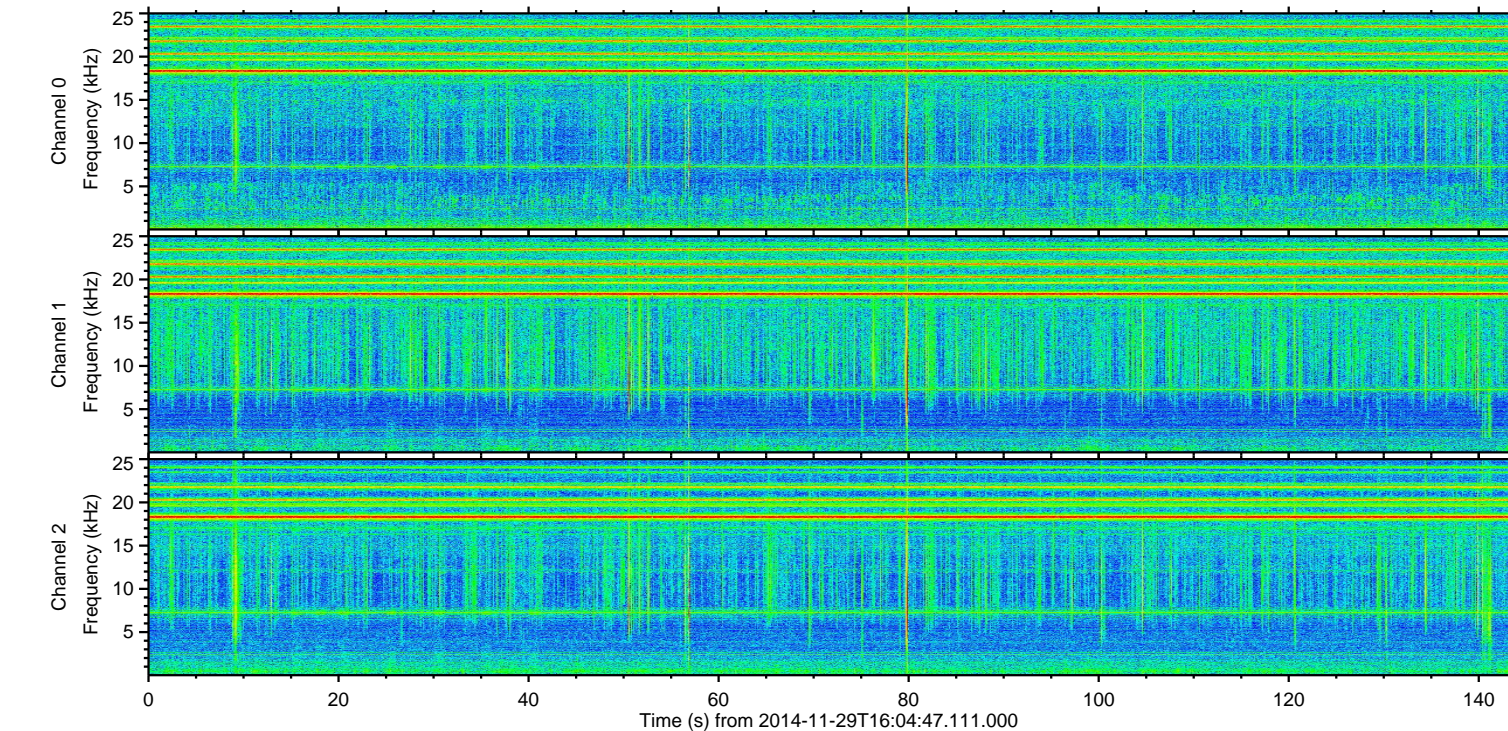
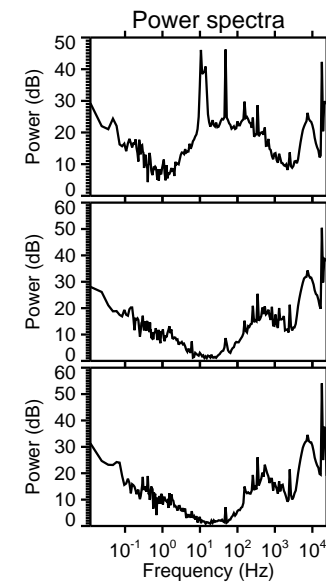
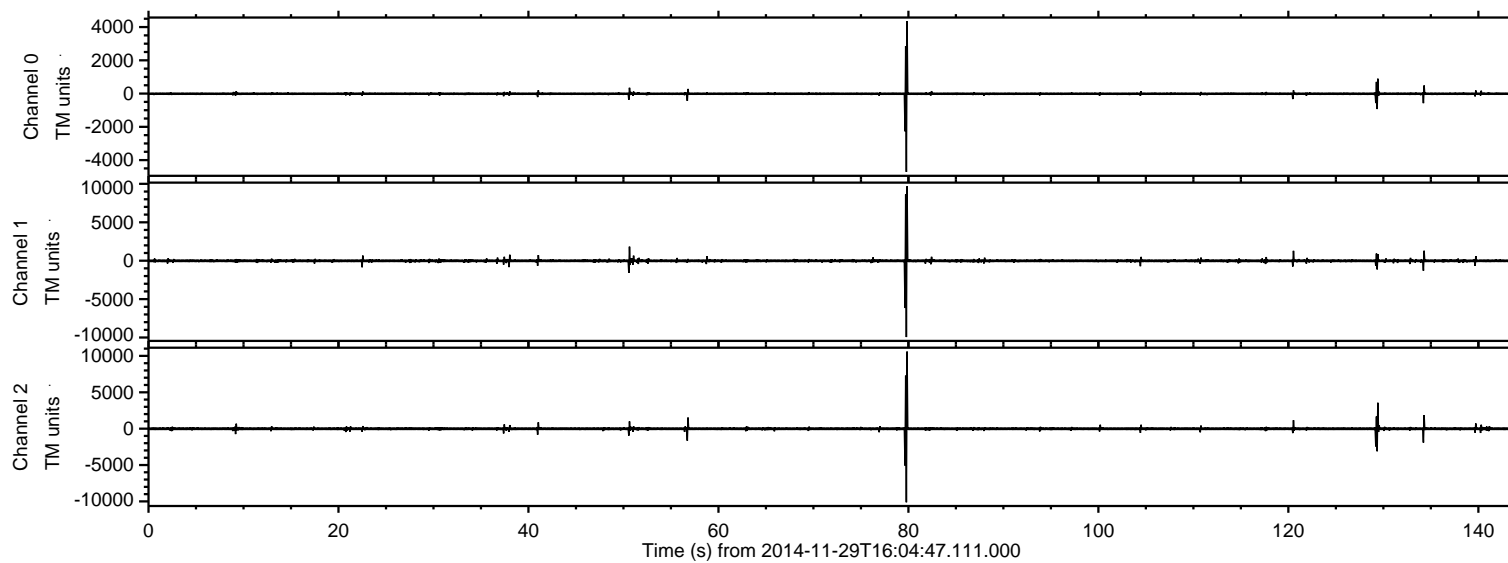


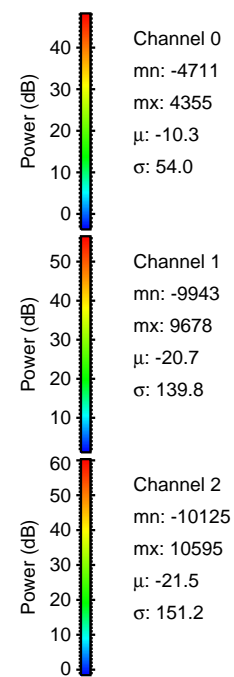
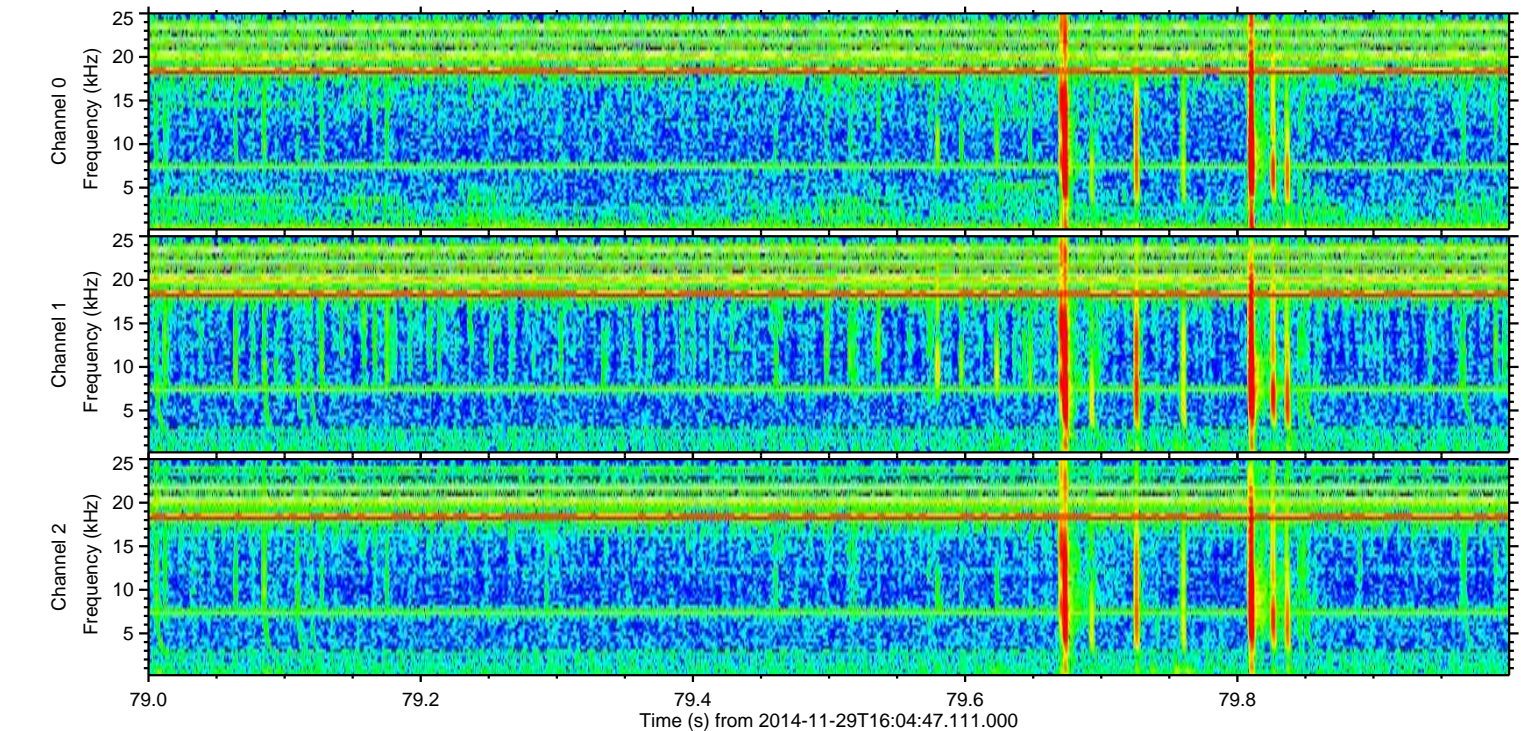
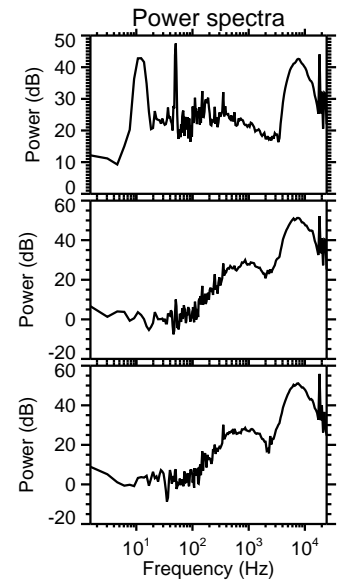
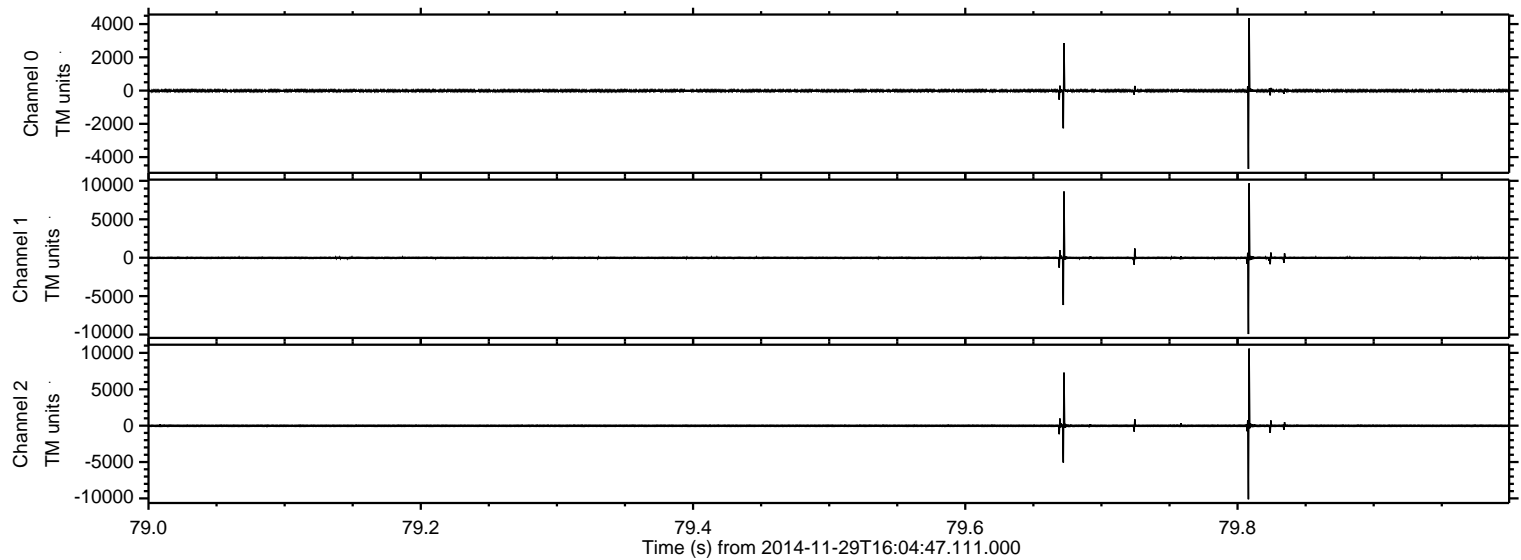
ELMAVAN 3D WAVEFORMS (Measured data sampled at 50 kHz) 49737 packets of 144 samples from 2014-11-29T16:04:47.111.000.

Processed Sun Nov 30 04:12:26 2014 by ELM ver.2012-10-06 from 001__elm20141129_160446__dat00.bin



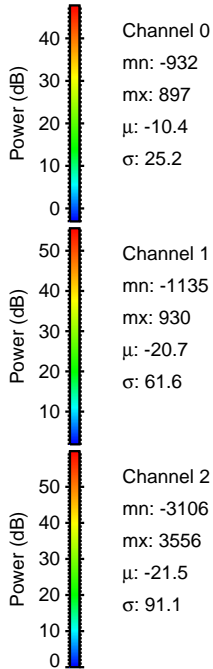
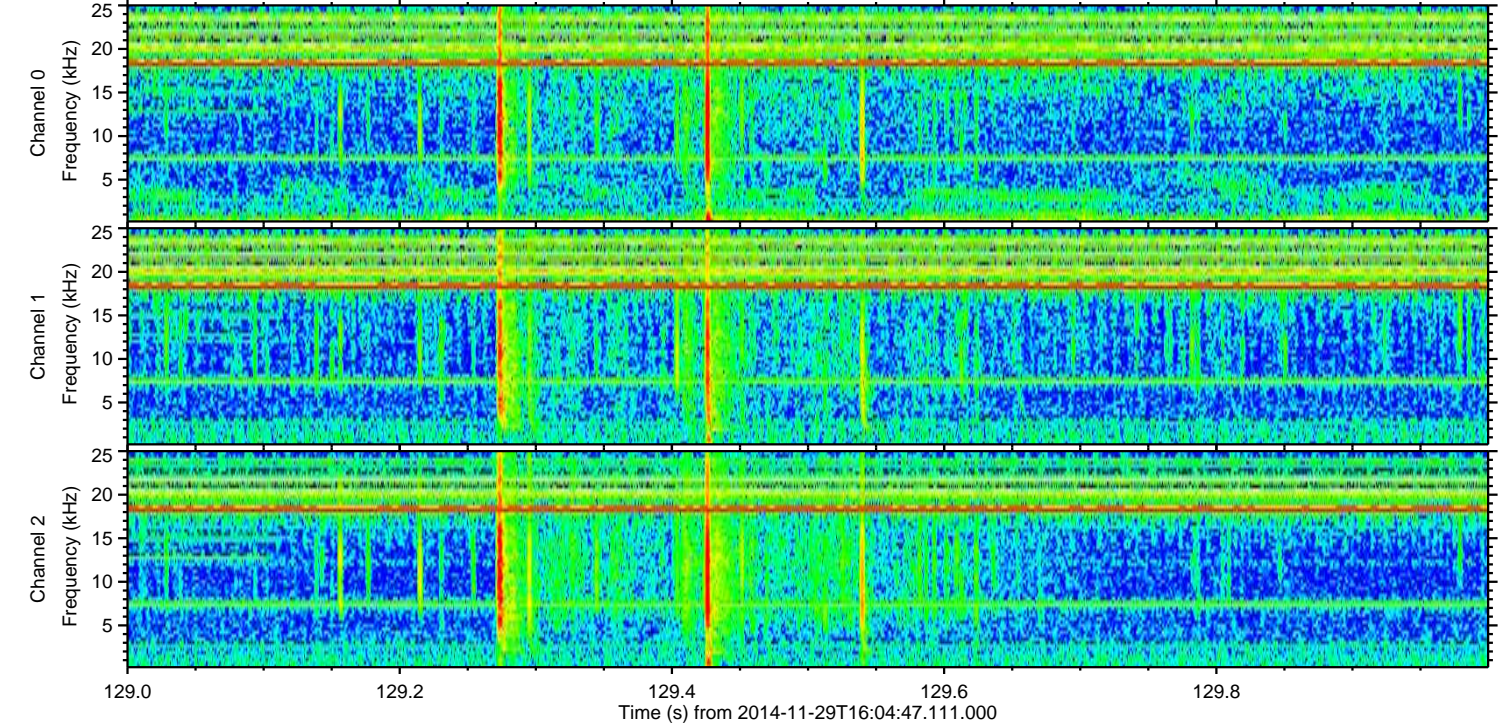
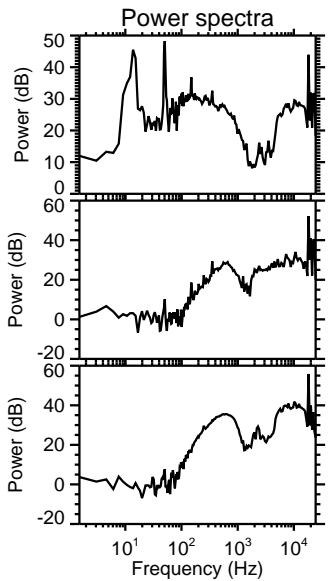
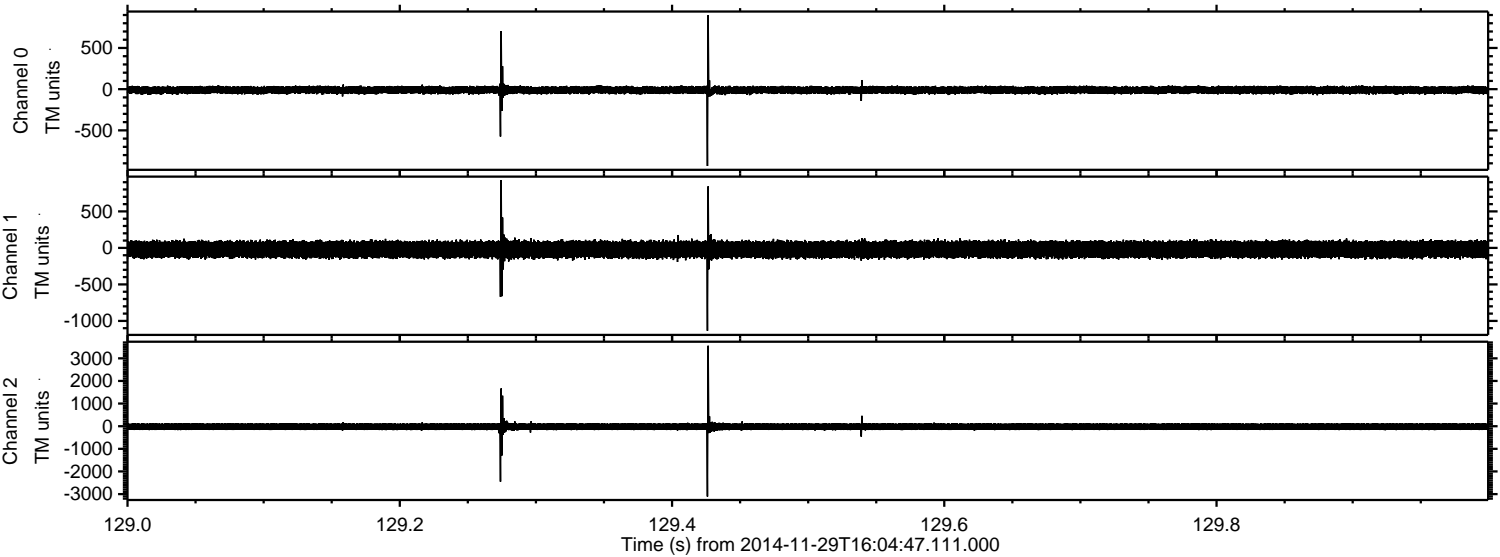
ELMAVAN 3D WAVEFORMS (Measured data sampled at 50 kHz) 49737 packets of 144 samples from 2014-11-29T16:04:47.111.000. Part 80/144

Processed Sun Nov 30 04:12:41 2014 by ELM ver.2012-10-06 from 001__elm20141129_160446__dat00.bin



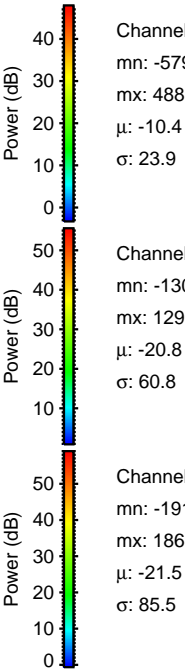
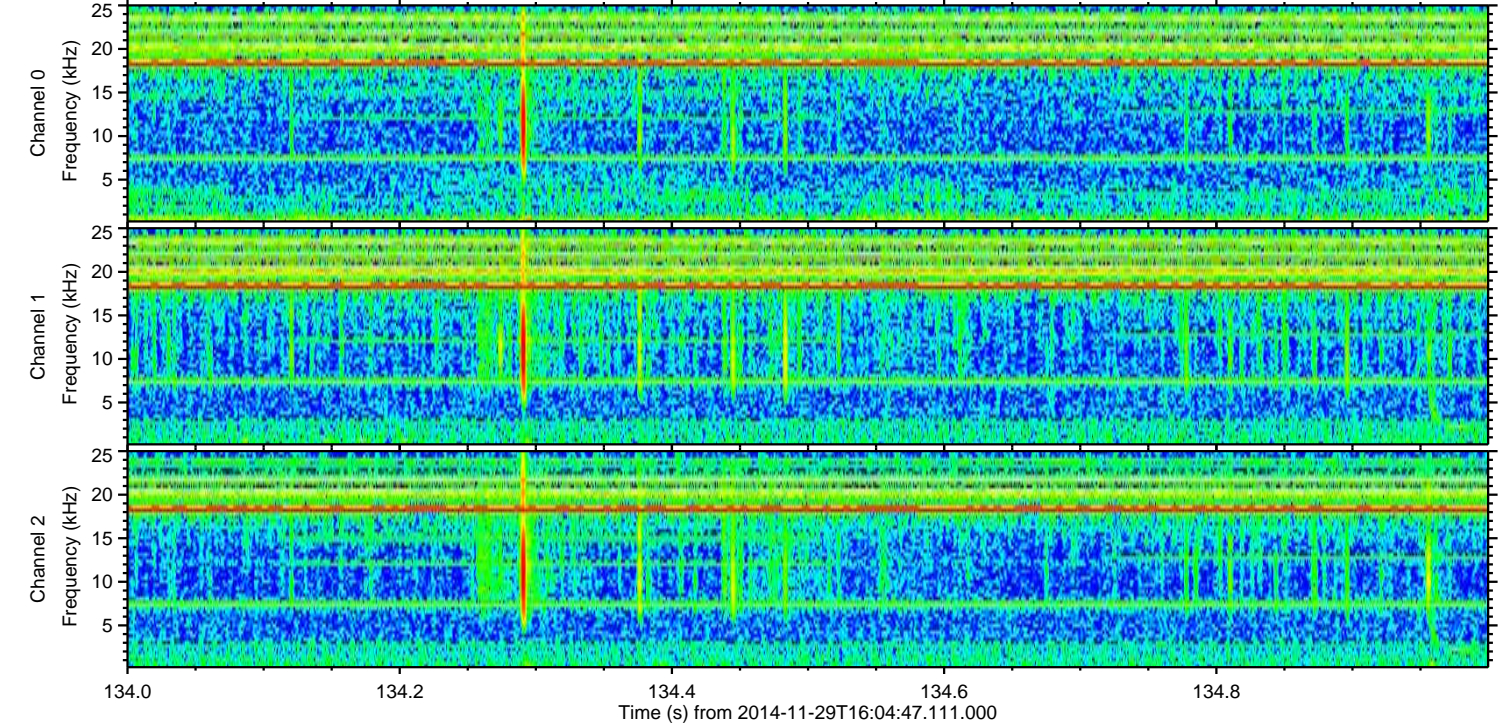
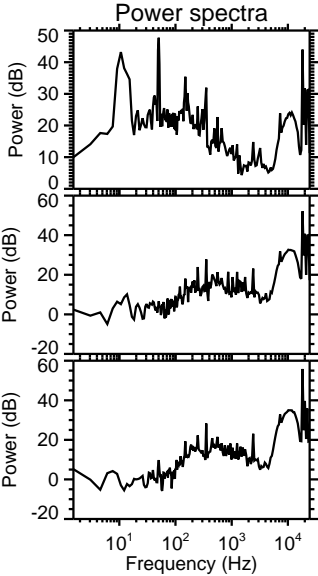
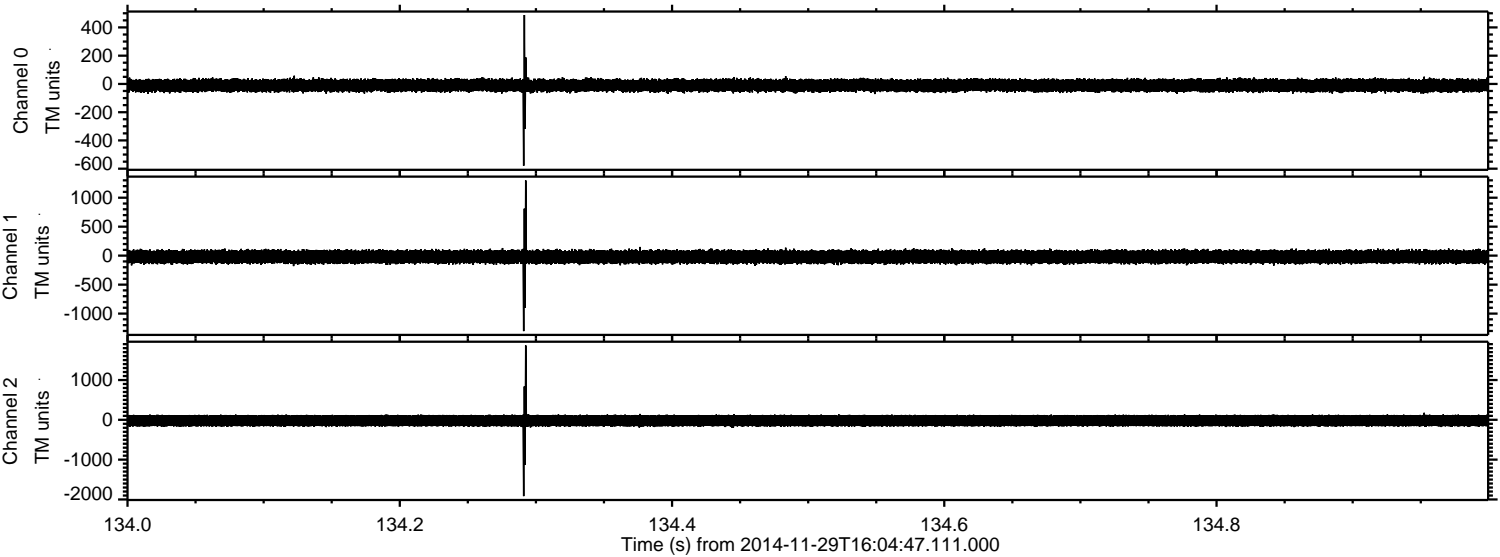
ELMAVAN 3D WAVEFORMS (Measured data sampled at 50 kHz) 49737 packets of 144 samples from 2014-11-29T16:04:47.111.000. Part 130/144

Processed Sun Nov 30 04:12:43 2014 by ELM ver.2012-10-06 from 001__elm20141129_160446__dat00.bin

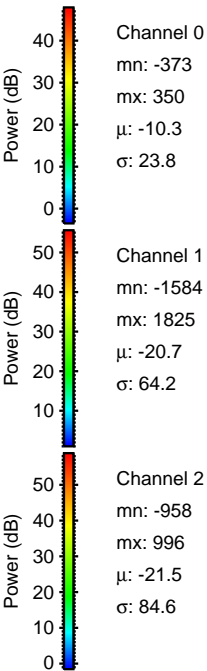
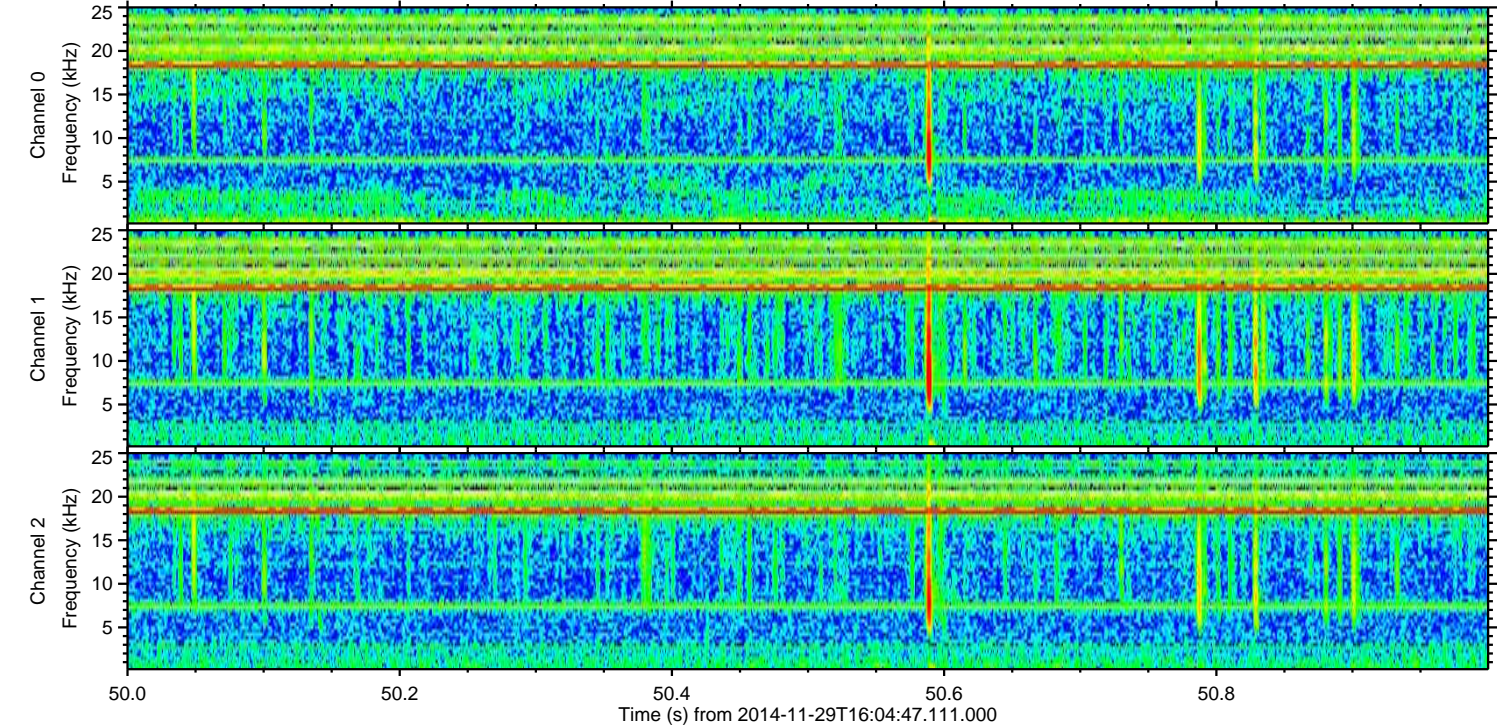
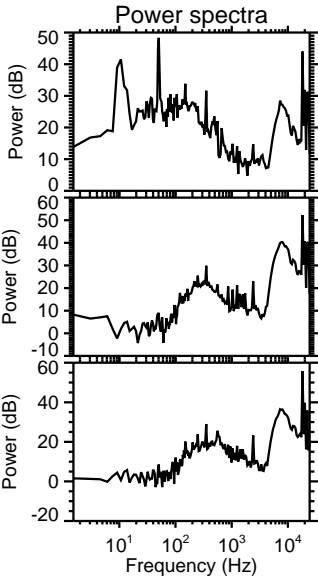
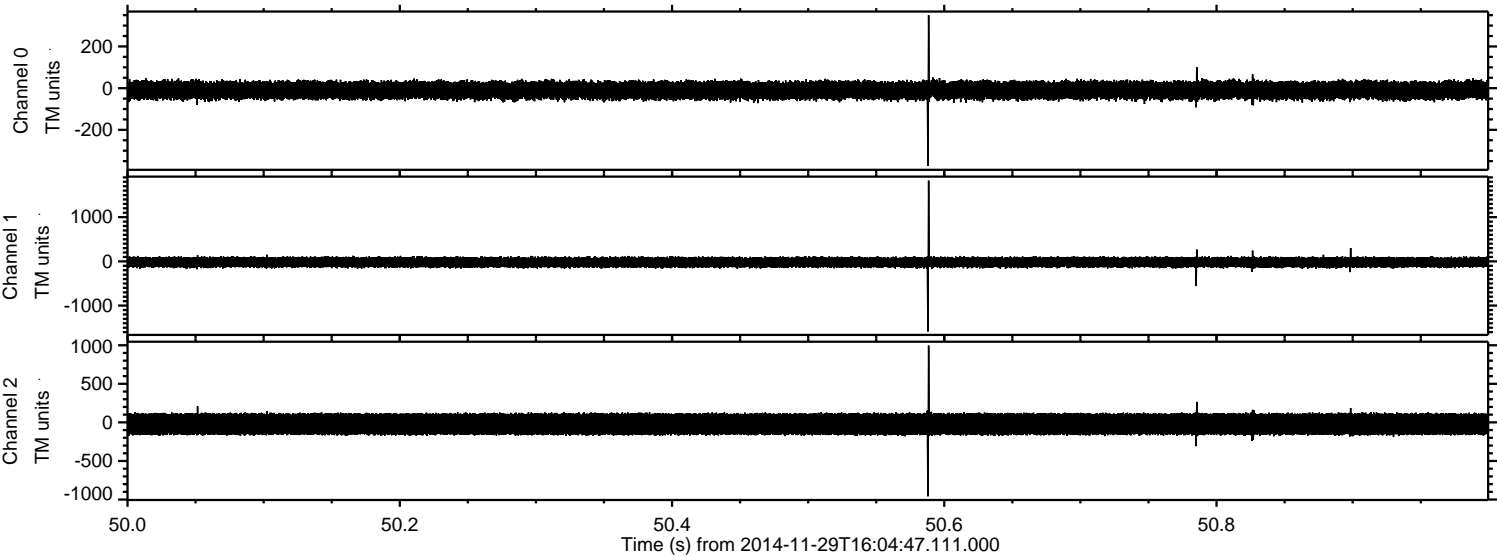


ELMAVAN 3D WAVEFORMS (Measured data sampled at 50 kHz) 49737 packets of 144 samples from 2014-11-29T16:04:47.111.000. Part 135/144

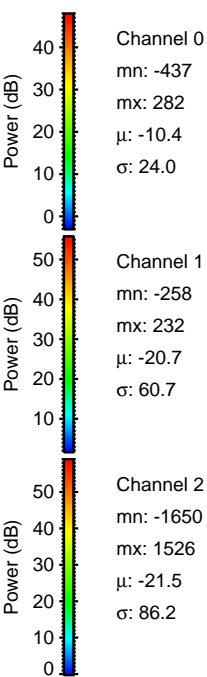
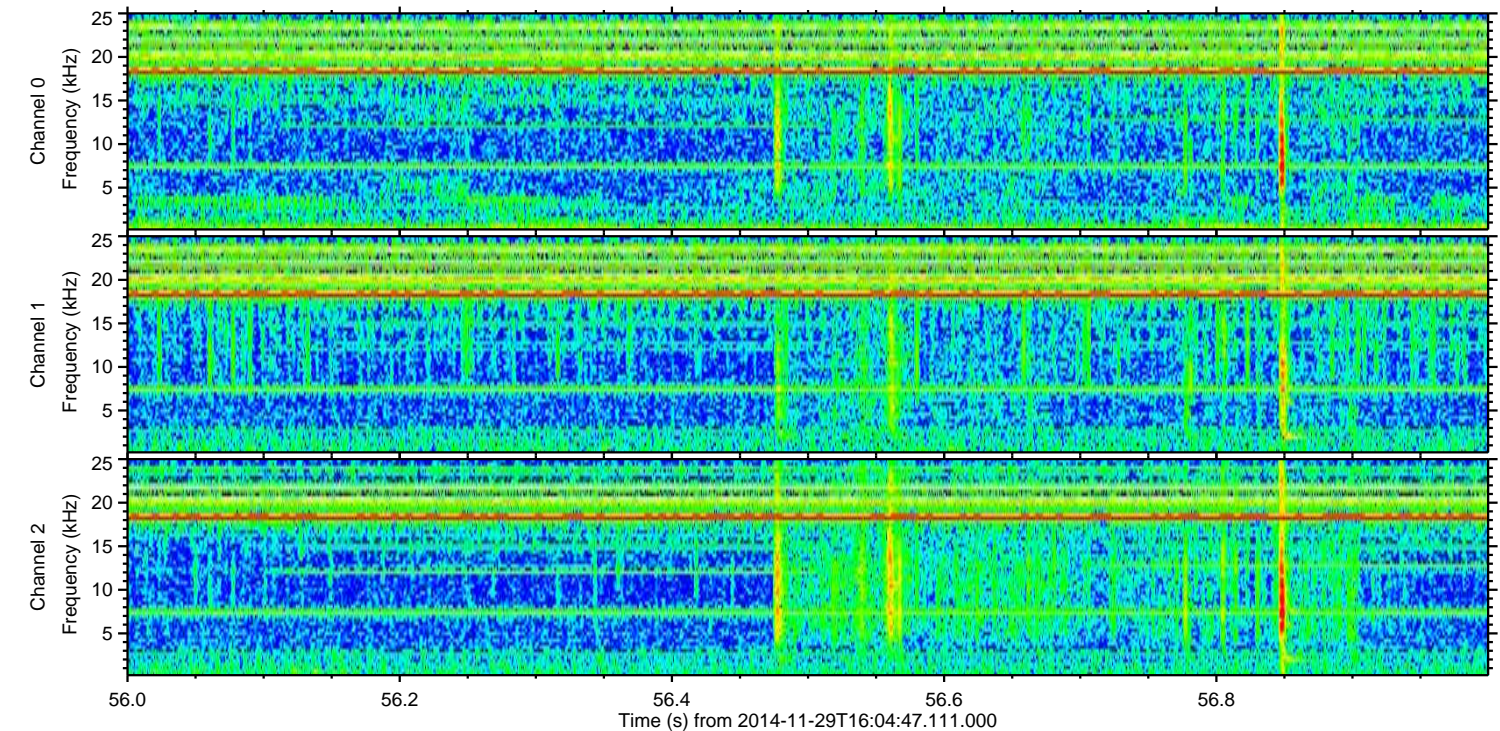
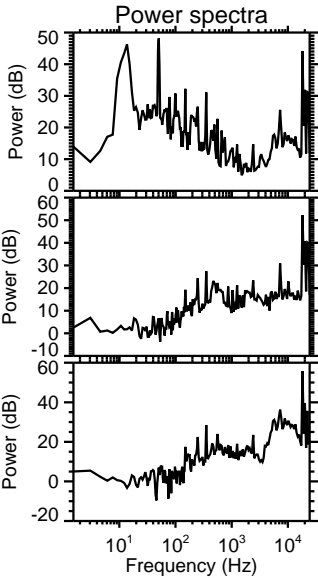
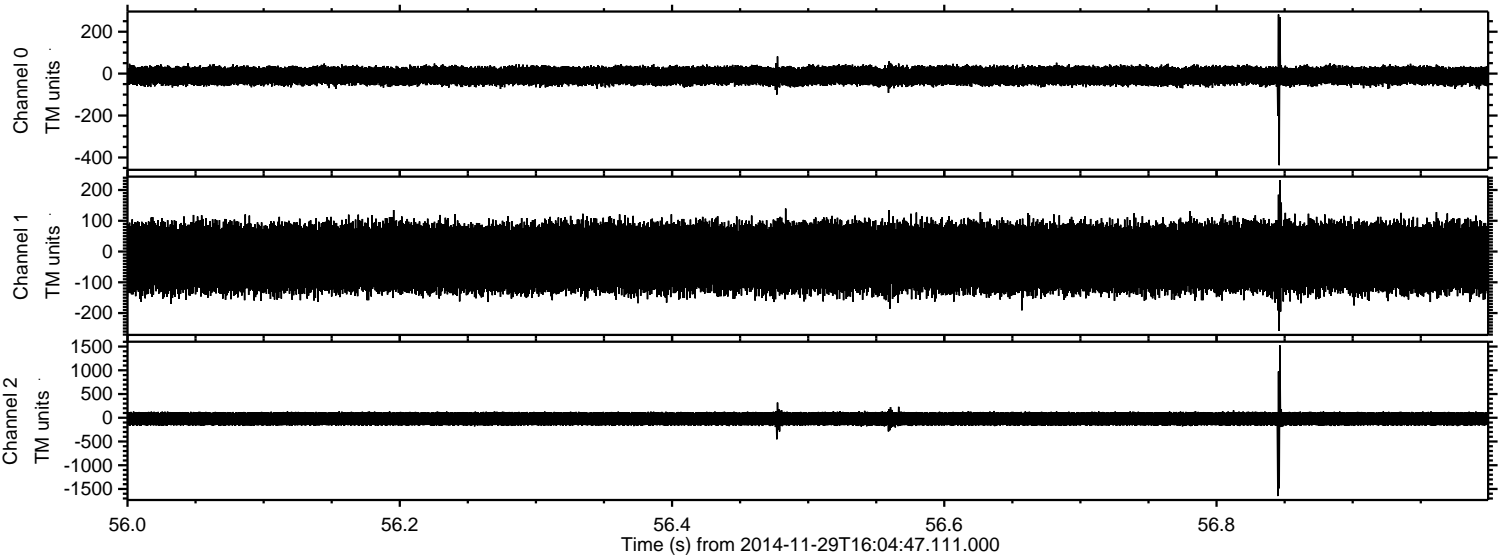
Processed Sun Nov 30 04:12:44 2014 by ELM ver.2012-10-06 from 001__elm20141129_160446__dat00.bin



Processed Sun Nov 30 04:12:45 2014 by ELM ver.2012-10-06 from 001__elm20141129_160446__dat00.bin

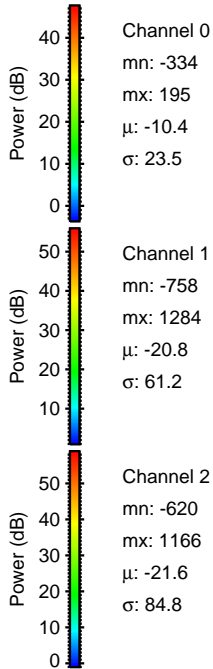
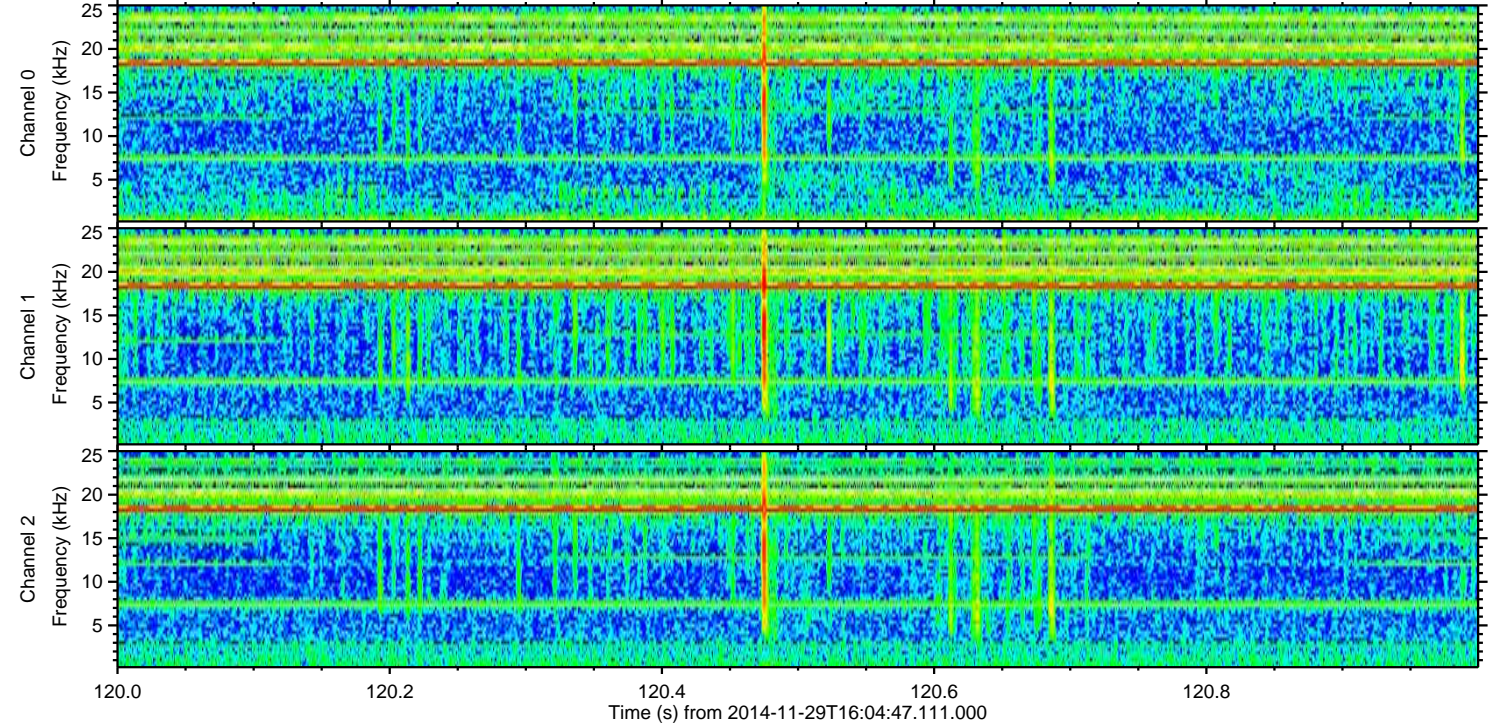
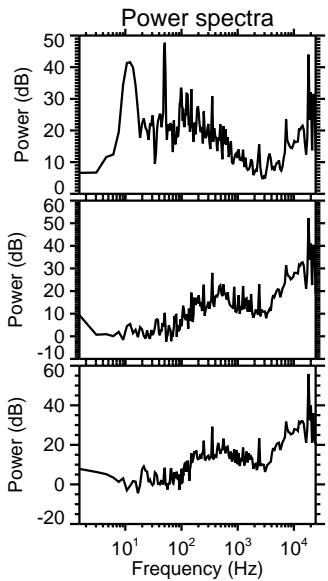
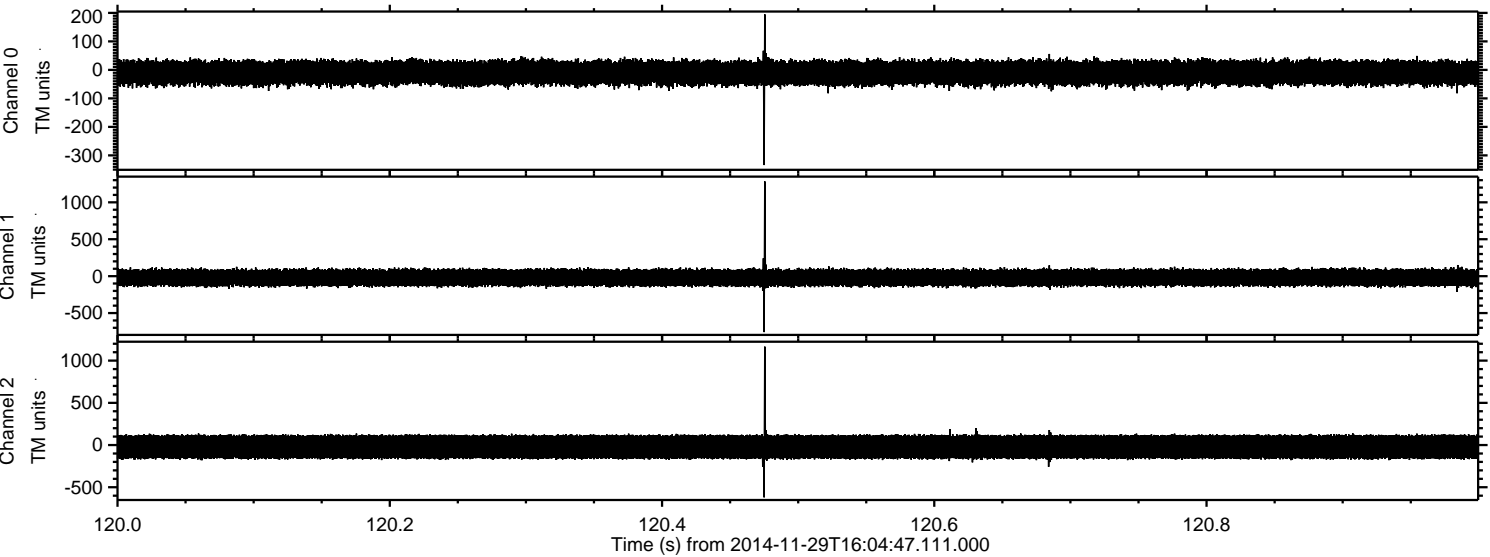


Processed Sun Nov 30 04:12:46 2014 by ELM ver.2012-10-06 from 001__elm20141129_160446__dat00.bin



ELMAVAN 3D WAVEFORMS (Measured data sampled at 50 kHz) 49737 packets of 144 samples from 2014-11-29T16:04:47.111.000. Part 121/144

Processed Sun Nov 30 04:12:47 2014 by ELM ver.2012-10-06 from 001__elm20141129_160446__dat00.bin

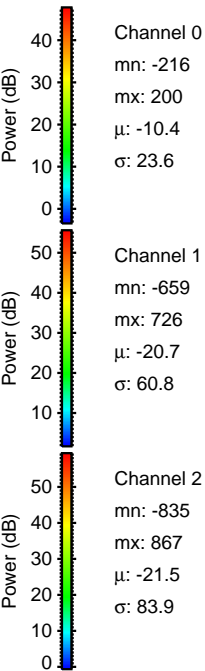
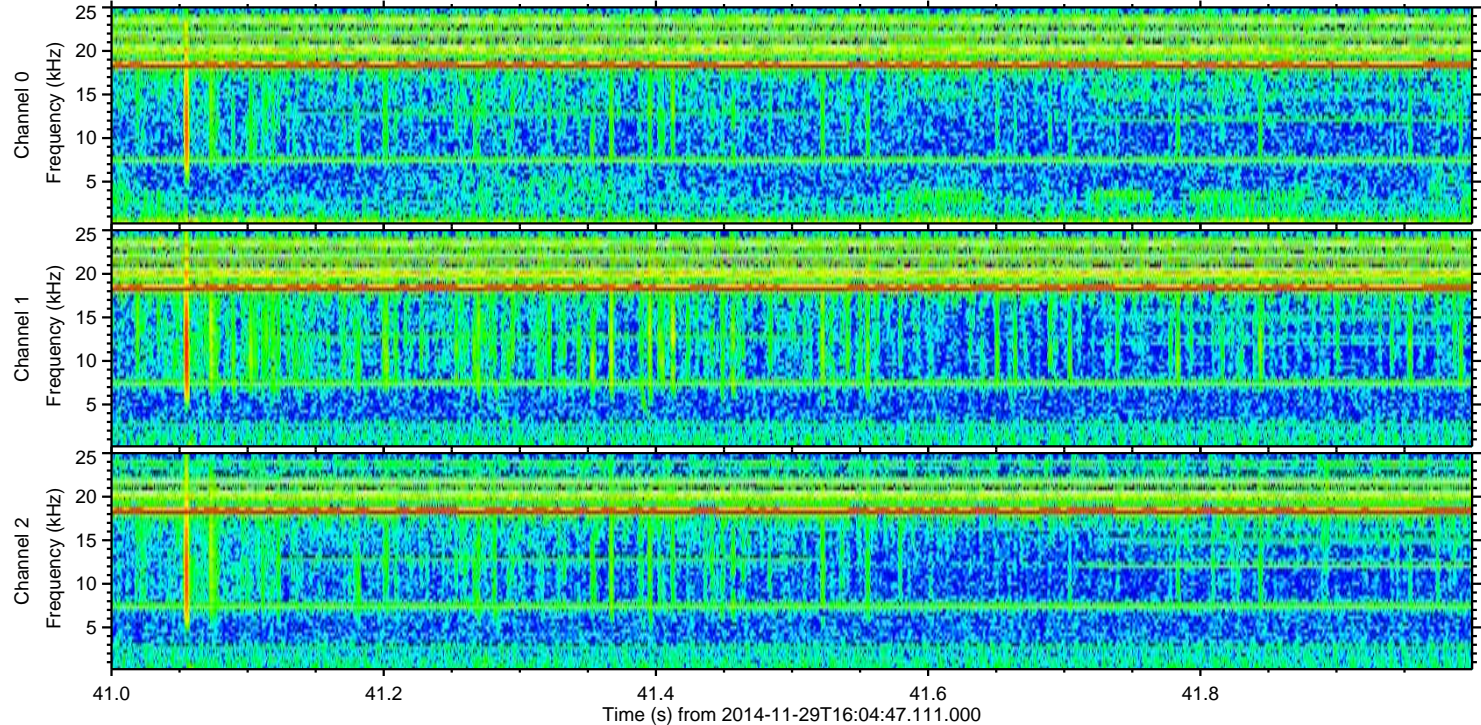
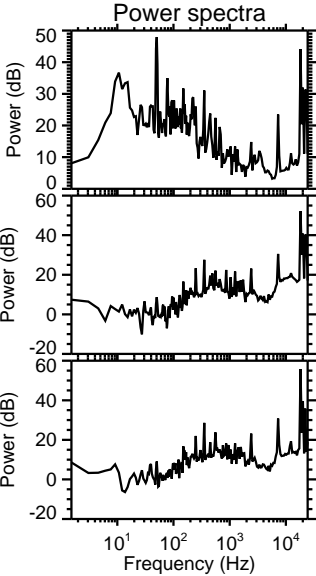
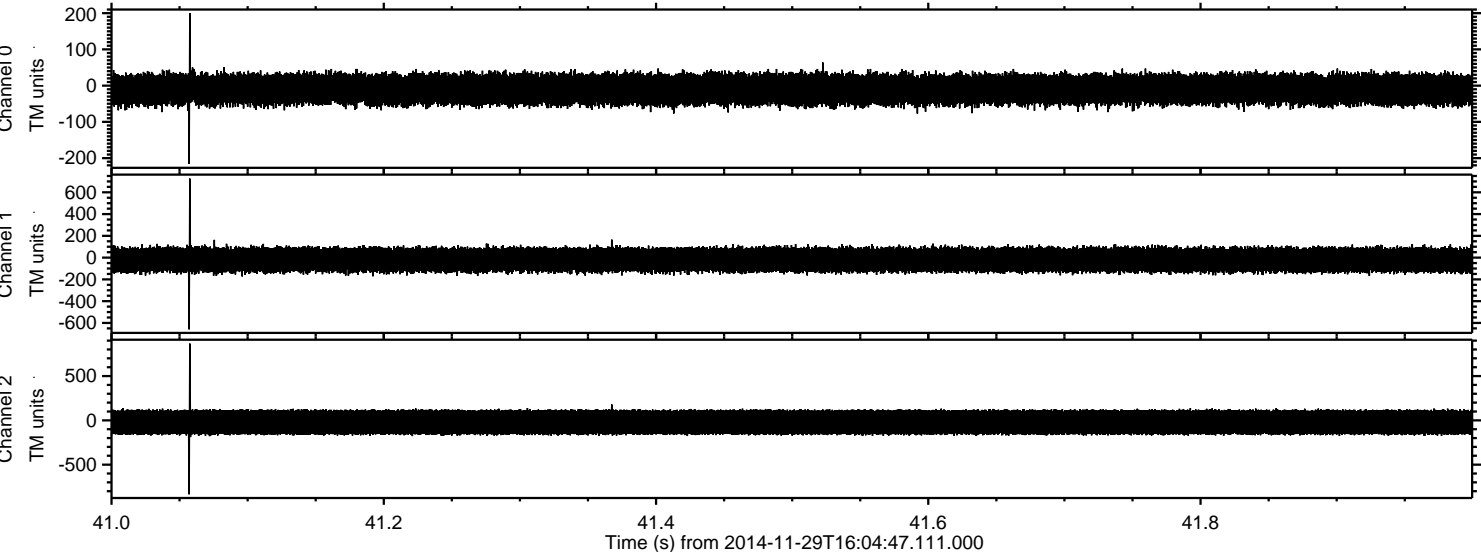


Channel 0
mn: -334
mx: 195
 μ : -10.4
 σ : 23.5

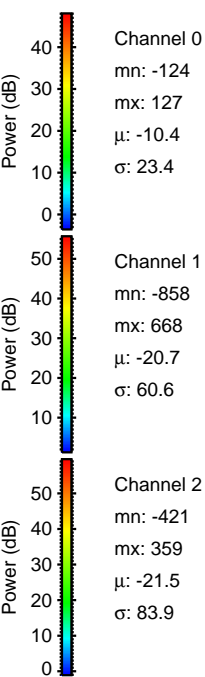
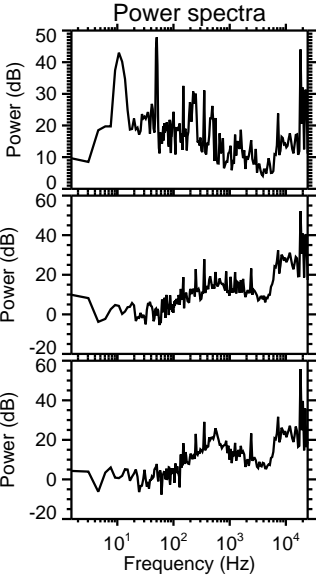
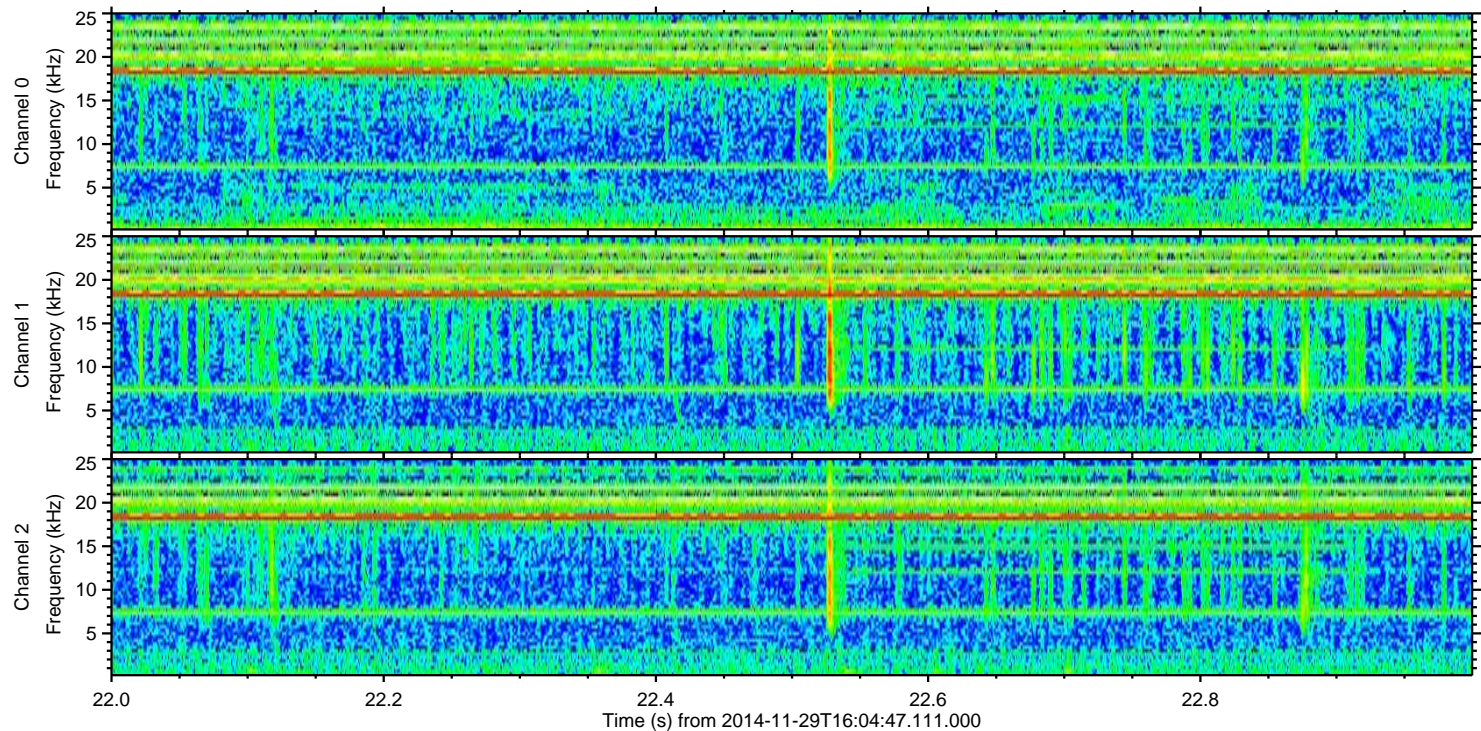
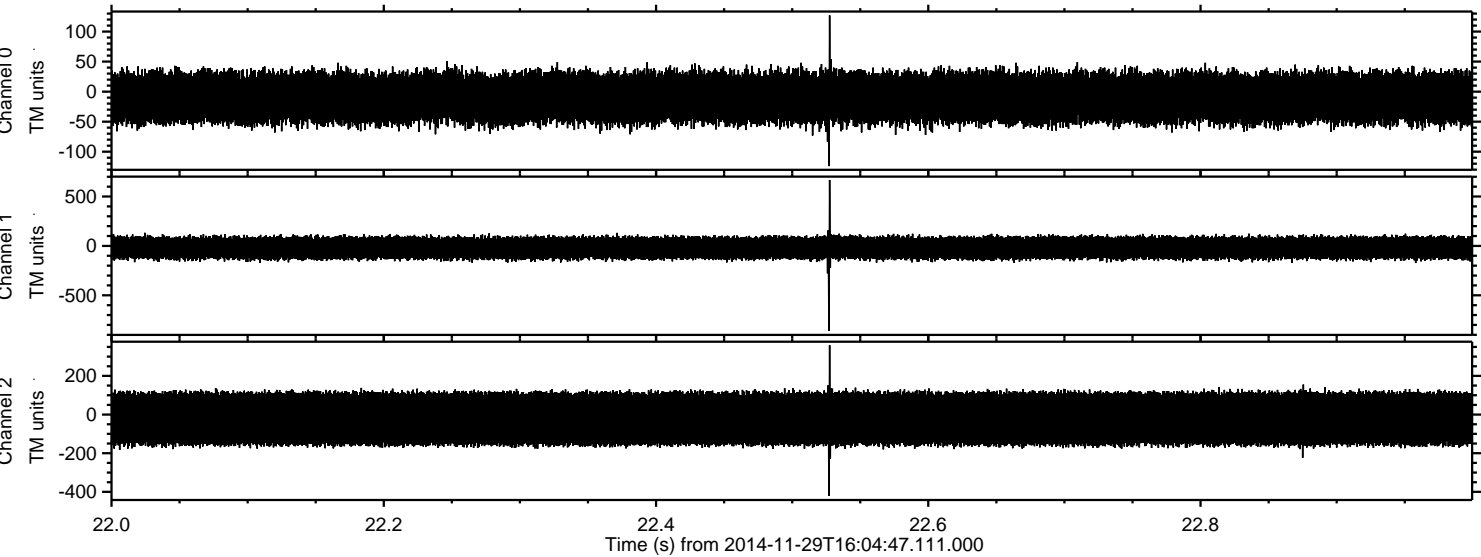
Channel 1
mn: -758
mx: 1284
 μ : -20.8
 σ : 61.2

Channel 2
mn: -620
mx: 1166
 μ : -21.6
 σ : 84.8

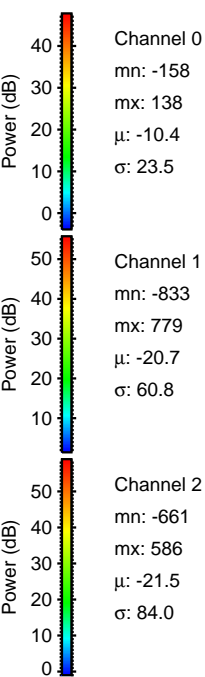
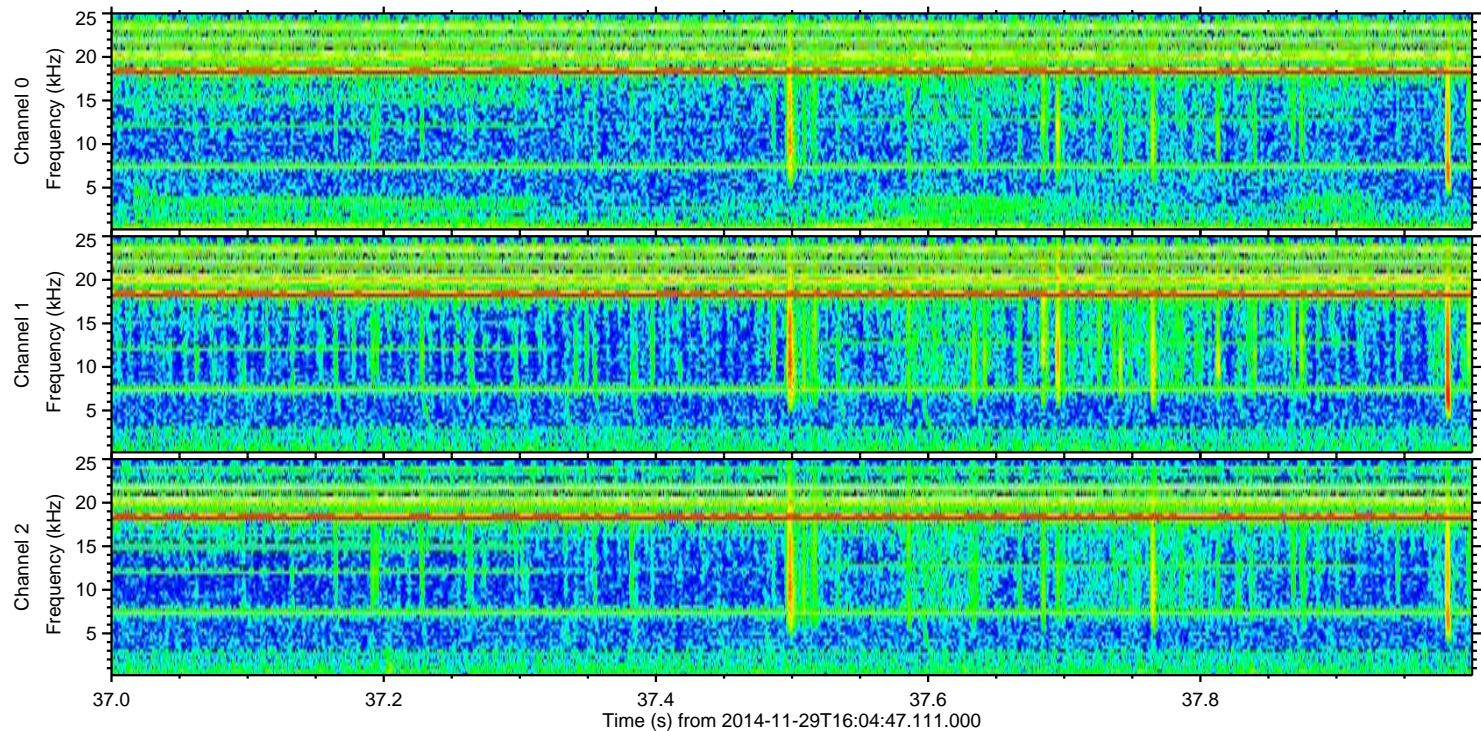
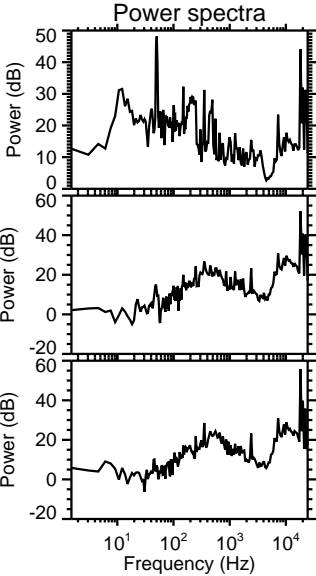
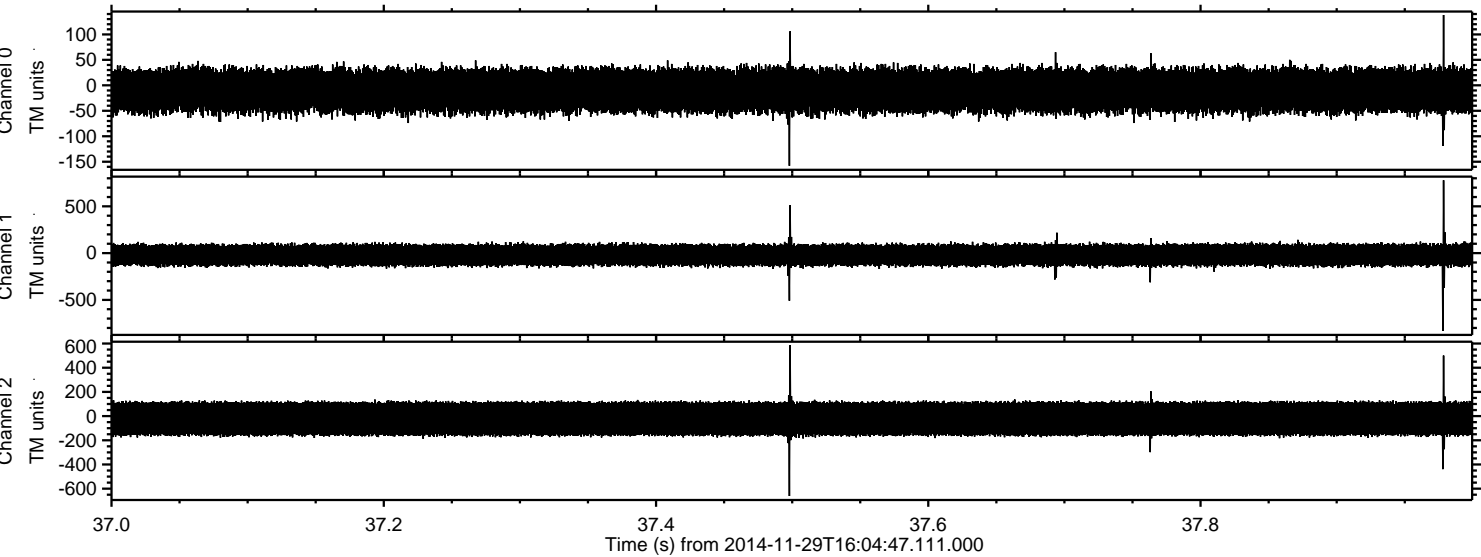
Processed Sun Nov 30 04:12:49 2014 by ELM ver.2012-10-06 from 001__elm20141129_160446__dat00.bin



Processed Sun Nov 30 04:12:50 2014 by ELM ver.2012-10-06 from 001__elm20141129_160446__dat00.bin



Processed Sun Nov 30 04:12:51 2014 by ELM ver.2012-10-06 from 001__elm20141129_160446__dat00.bin



Processed Sun Nov 30 04:12:52 2014 by ELM ver.2012-10-06 from 001__elm20141129_160446__dat00.bin

