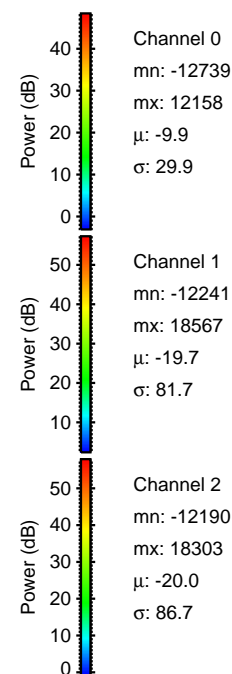
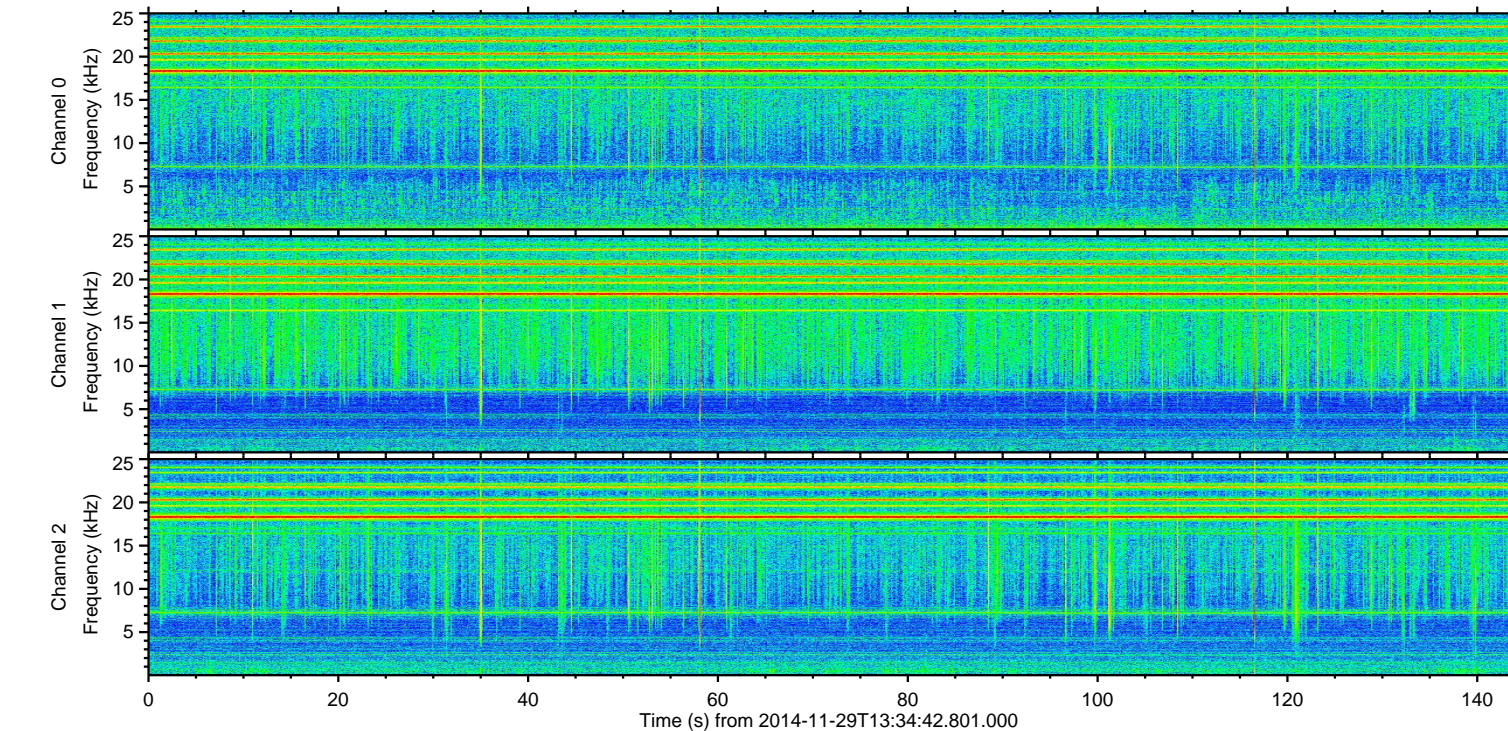
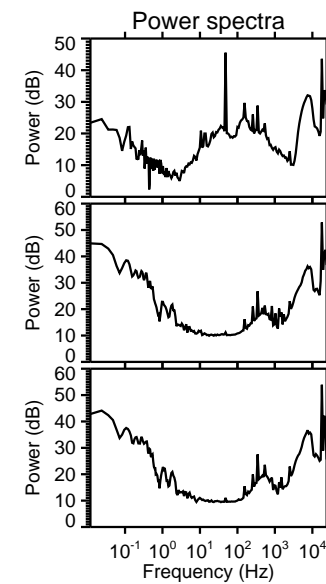
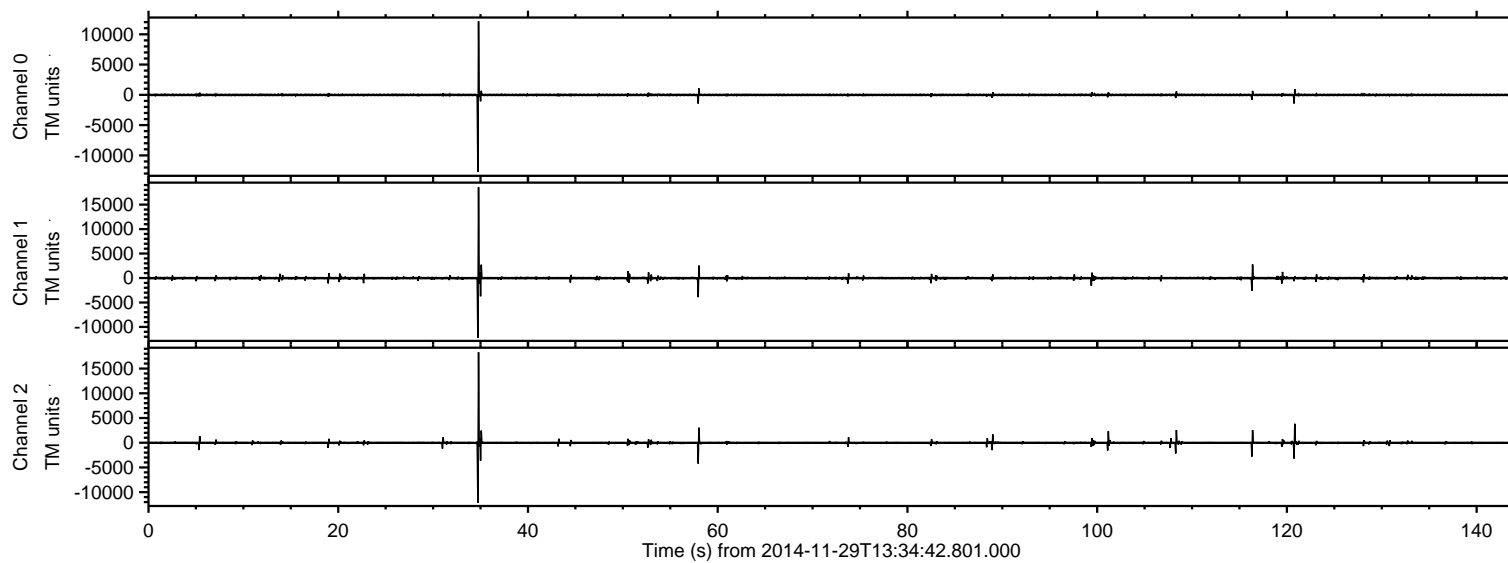


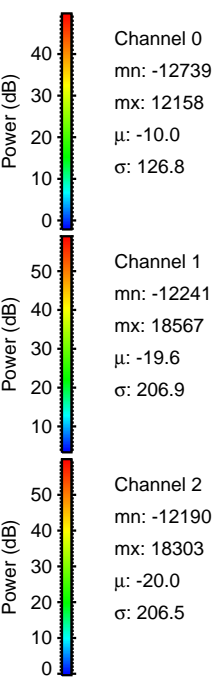
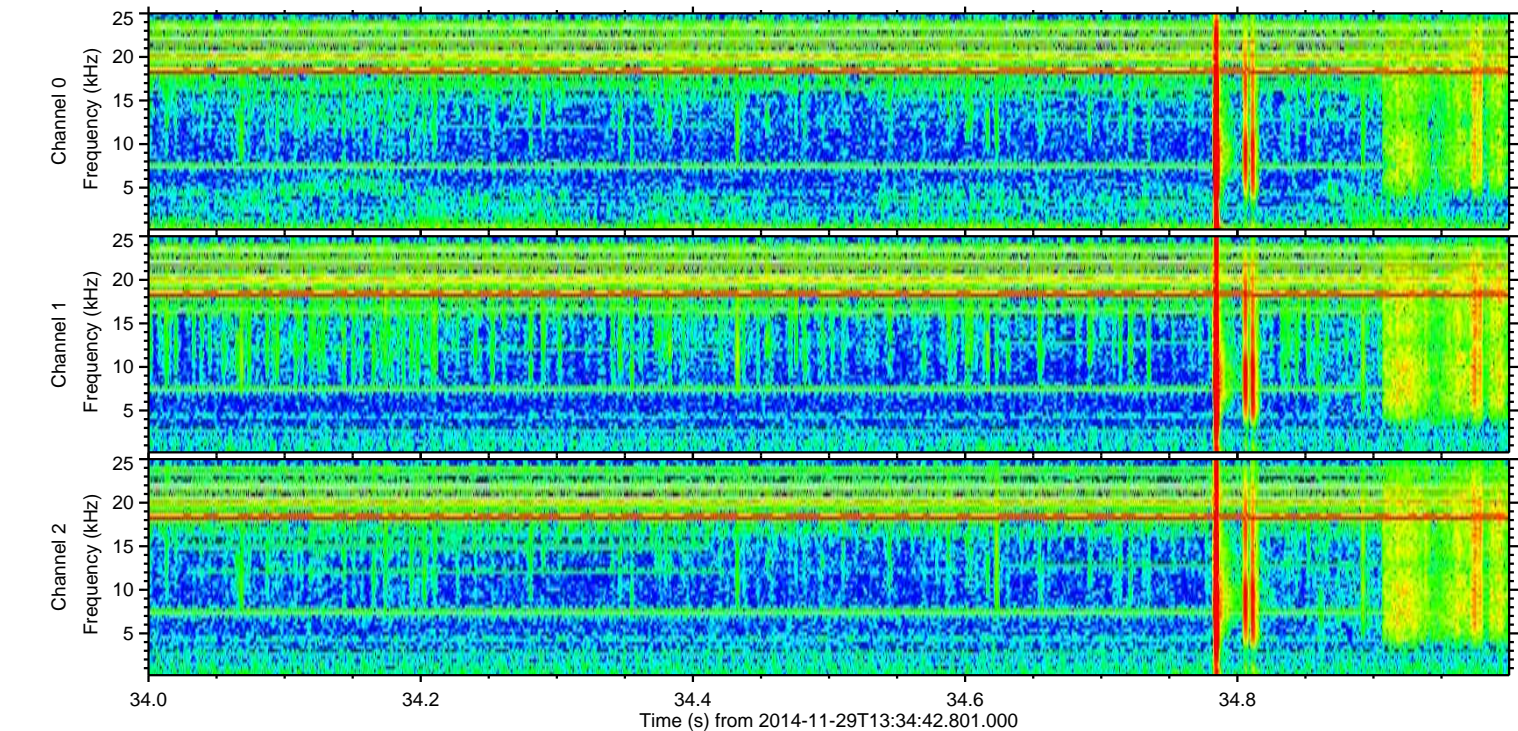
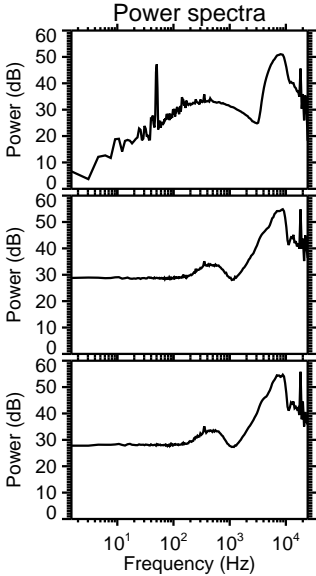
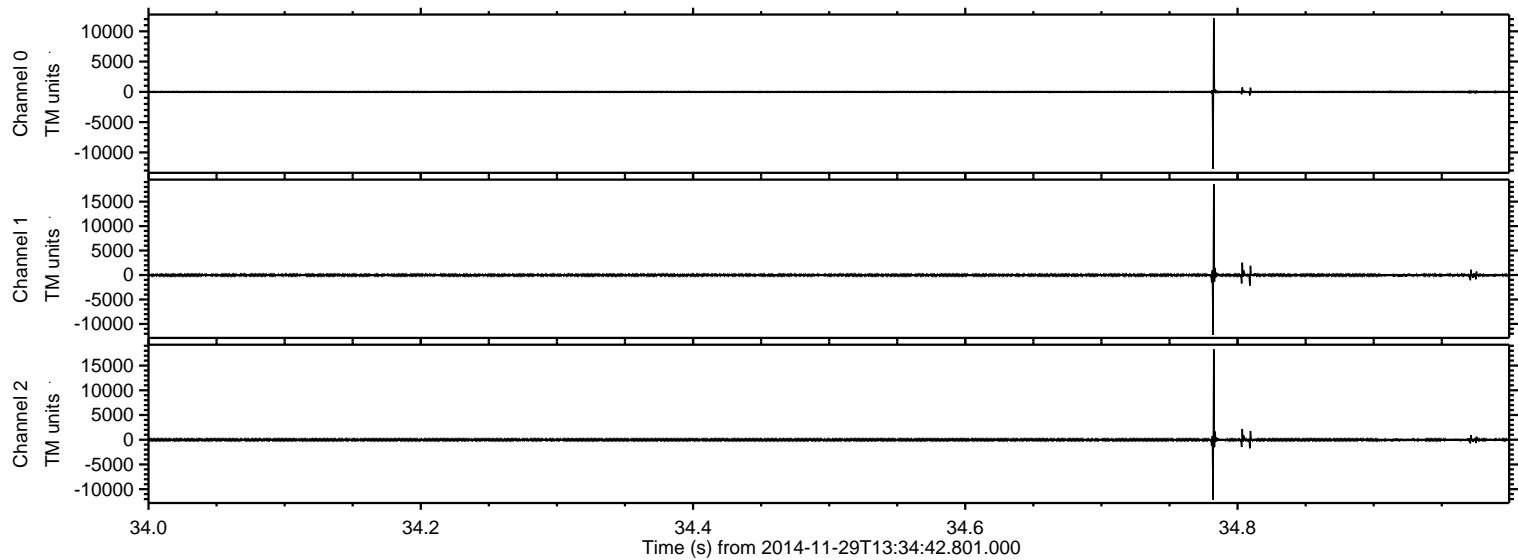
# ELMAVAN 3D WAVEFORMS (Measured data sampled at 50 kHz) 49801 packets of 144 samples from 2014-11-29T13:34:42.801.000.

Processed Sun Nov 30 03:29:17 2014 by ELM ver.2012-10-06 from 001\_\_elm20141129\_133441\_\_dat00.bin



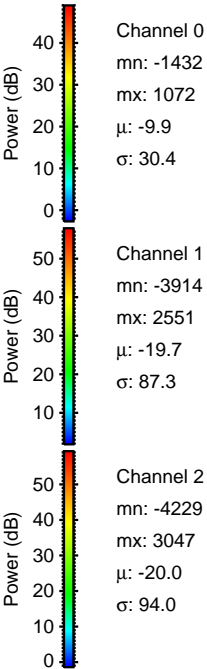
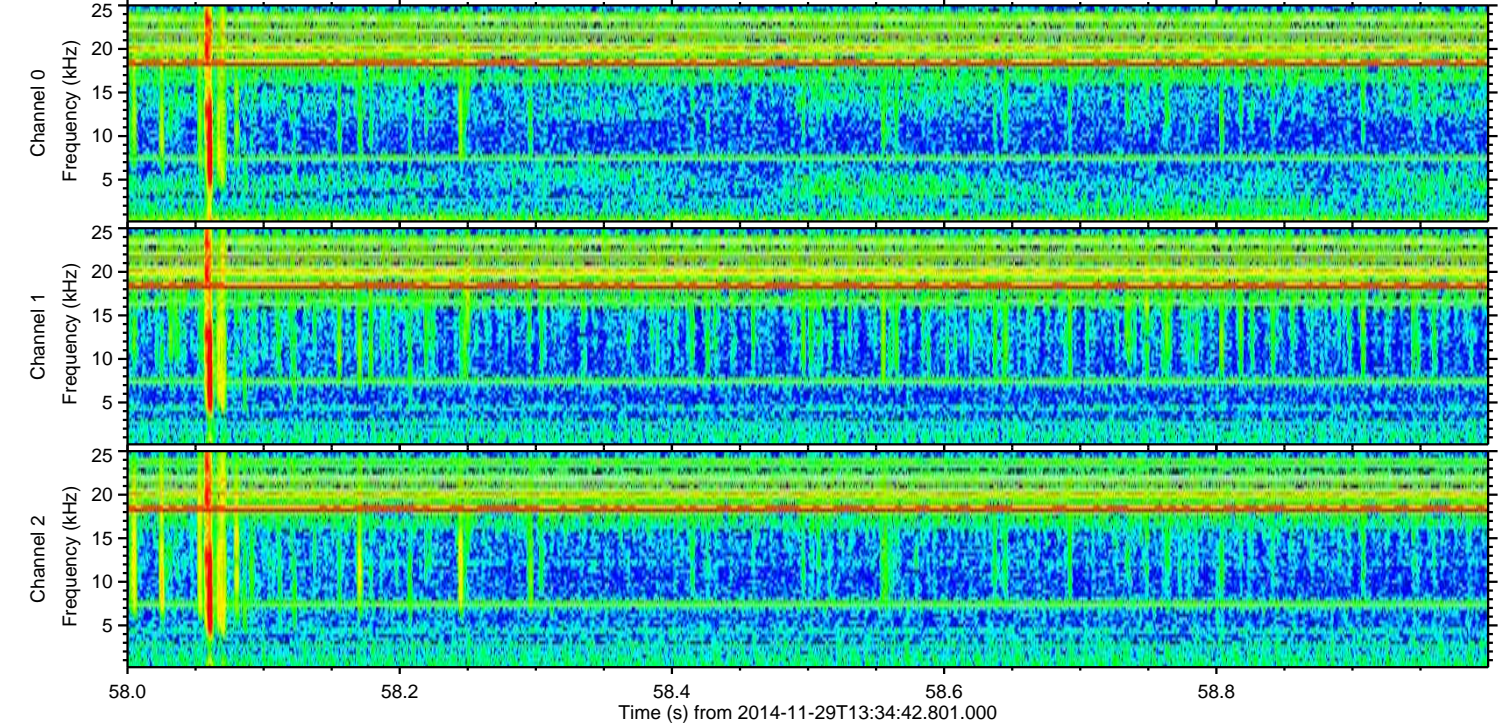
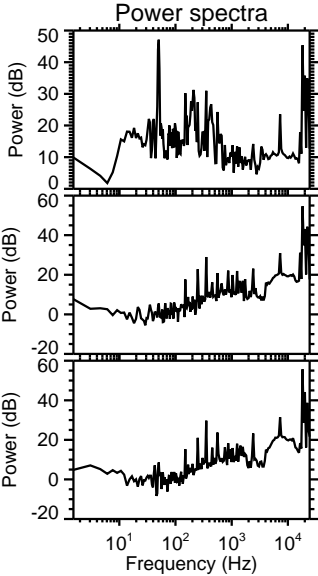
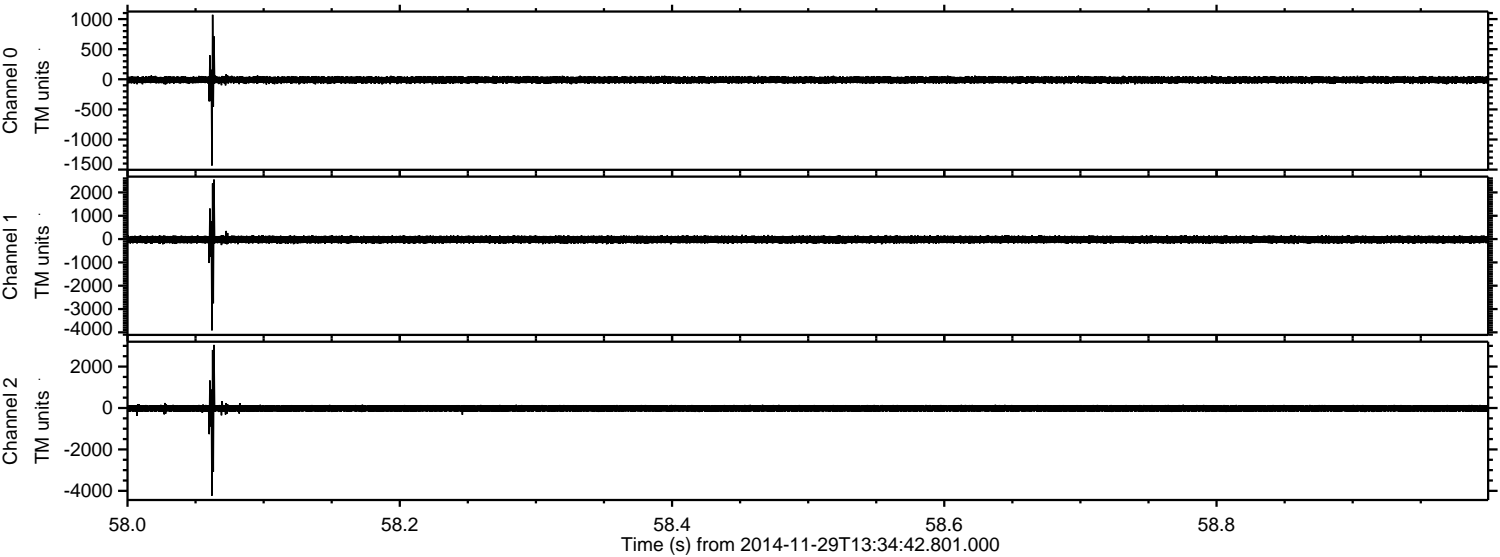


Processed Sun Nov 30 03:29:31 2014 by ELM ver.2012-10-06 from 001\_\_elm20141129\_133441\_\_dat00.bin





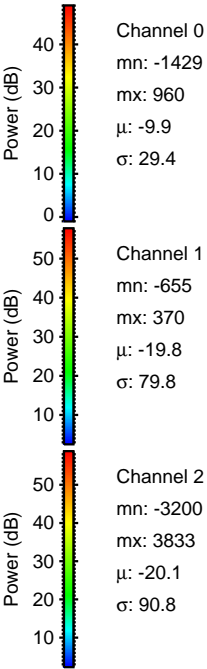
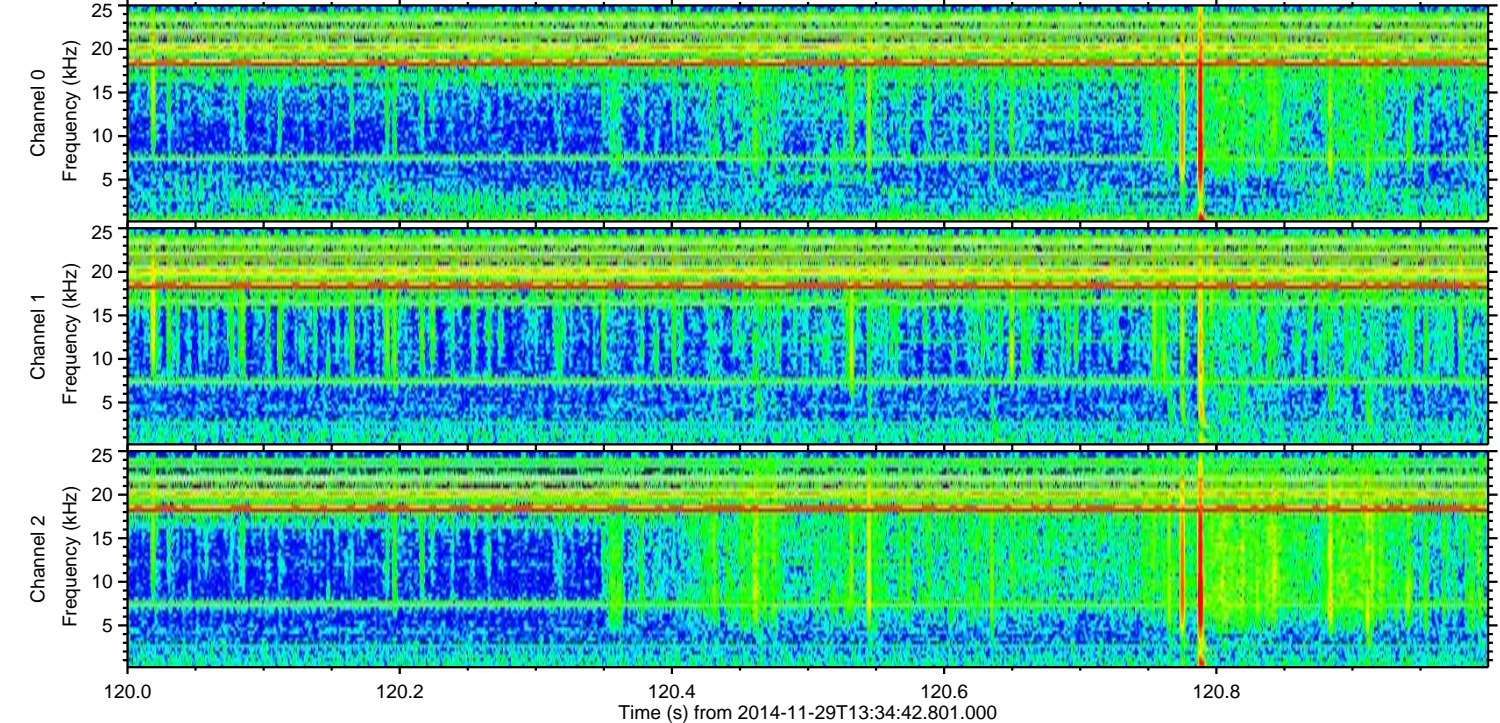
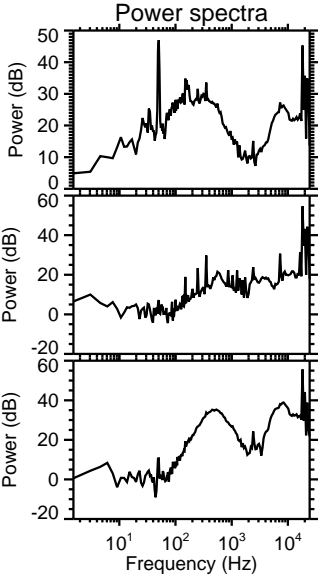
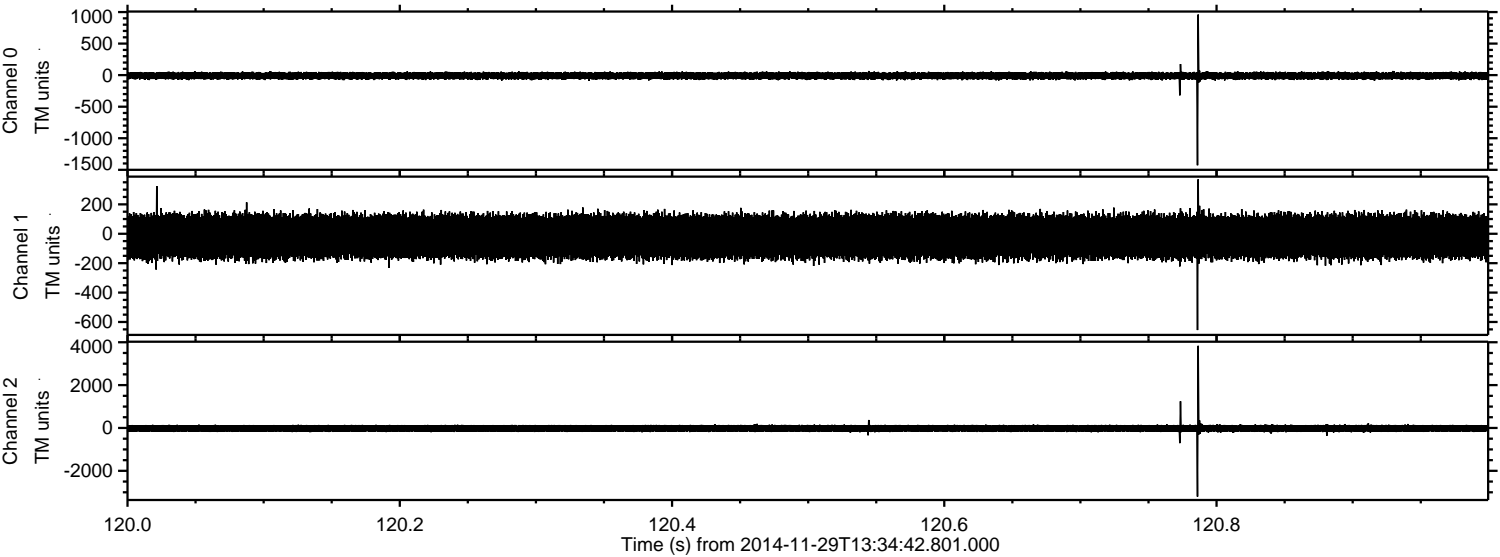
Processed Sun Nov 30 03:29:32 2014 by ELM ver.2012-10-06 from 001\_\_elm20141129\_133441\_\_dat00.bin





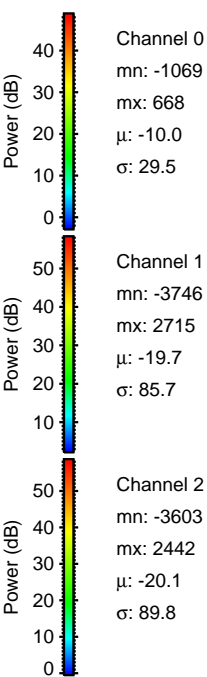
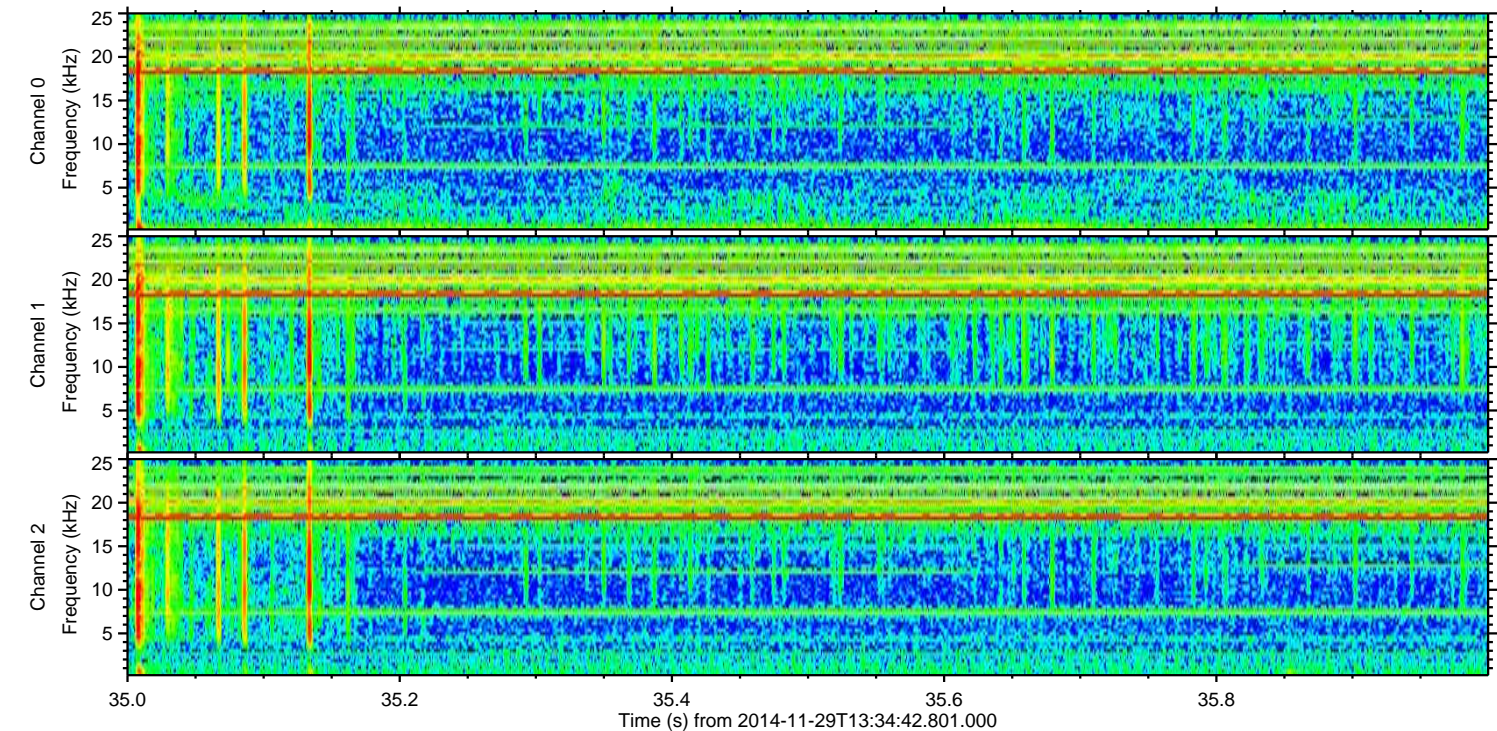
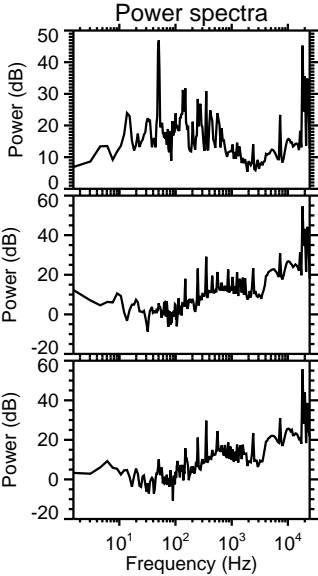
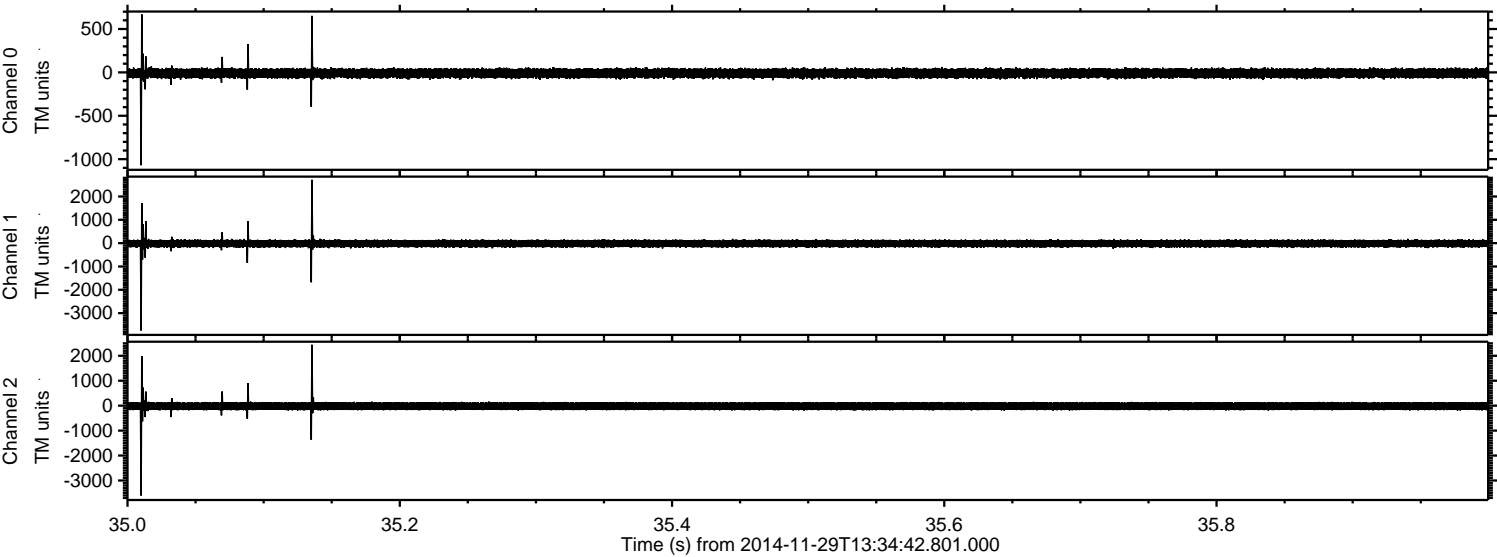
ELMAVAN 3D WAVEFORMS (Measured data sampled at 50 kHz) 49801 packets of 144 samples from 2014-11-29T13:34:42.801.000. Part 121/144

Processed Sun Nov 30 03:29:33 2014 by ELM ver.2012-10-06 from 001\_\_elm20141129\_133441\_\_dat00.bin





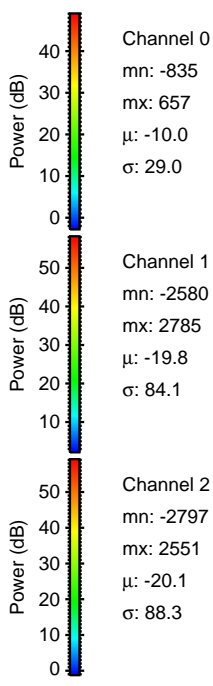
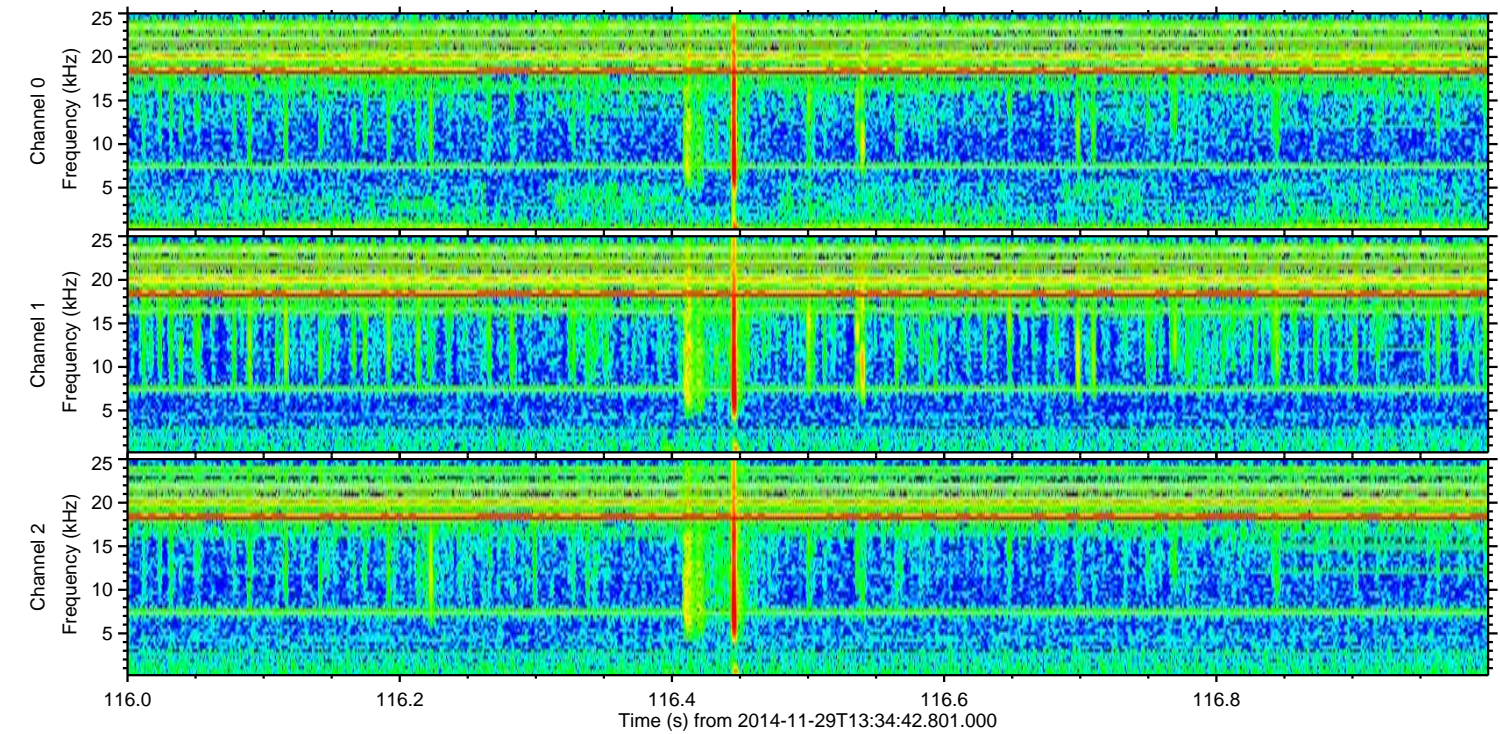
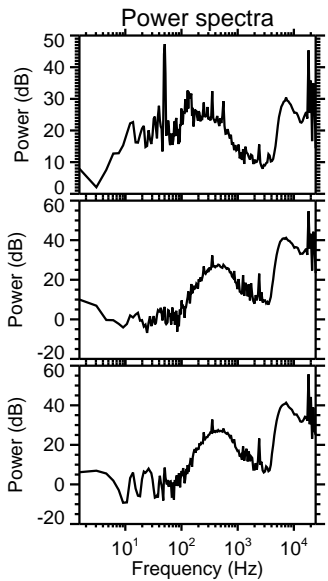
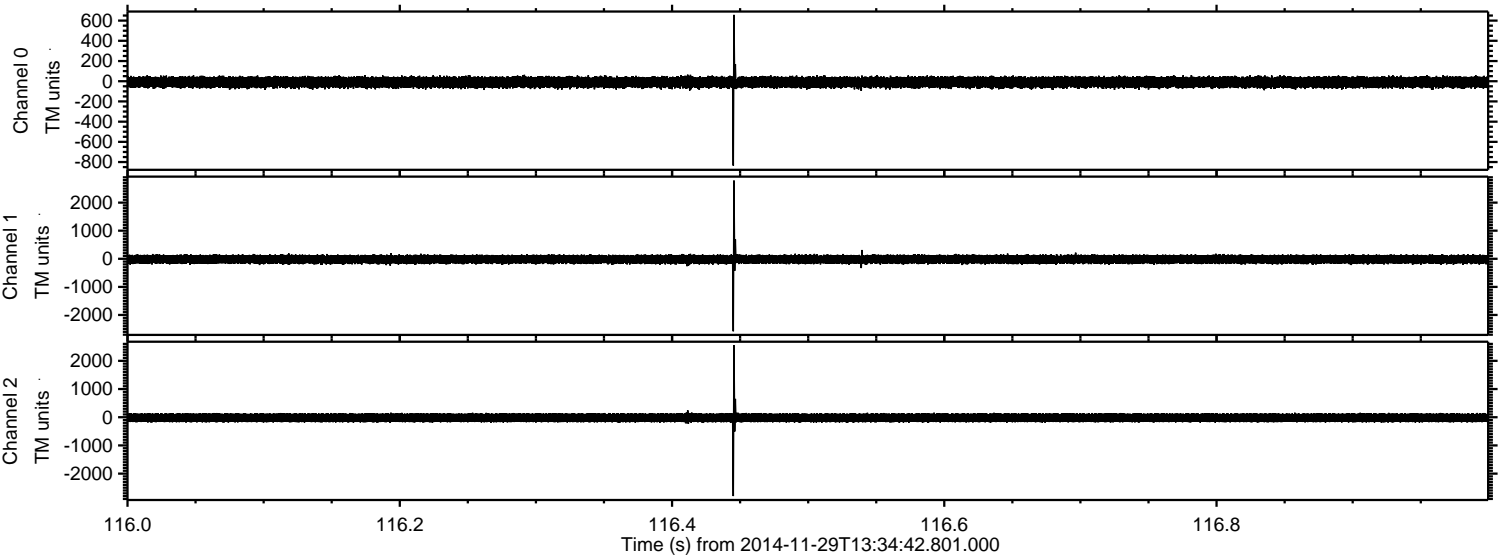
Processed Sun Nov 30 03:29:34 2014 by ELM ver.2012-10-06 from 001\_elm20141129\_133441\_\_dat00.bin





ELMAVAN 3D WAVEFORMS (Measured data sampled at 50 kHz) 49801 packets of 144 samples from 2014-11-29T13:34:42.801.000. Part 117/144

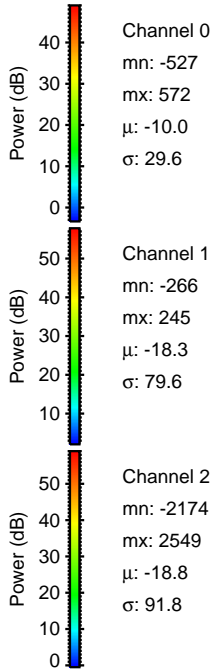
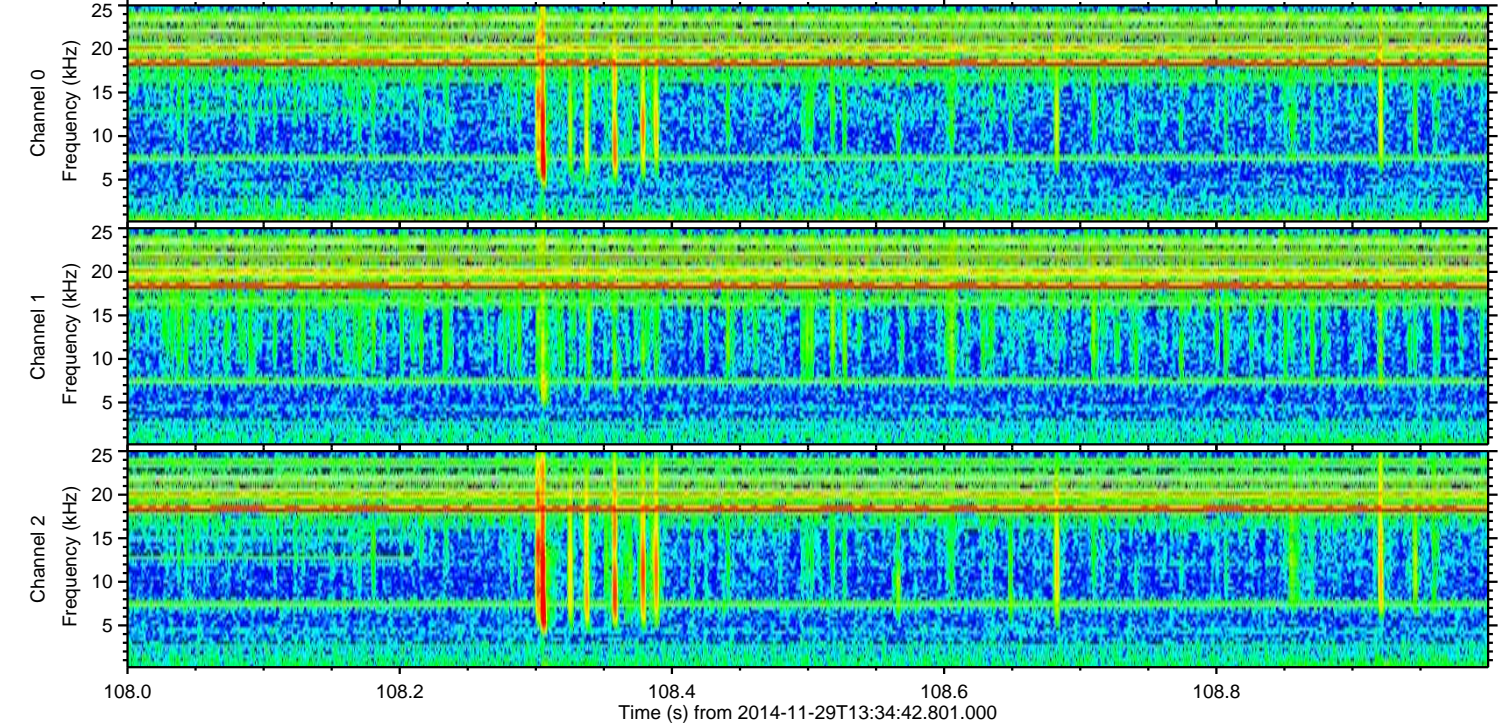
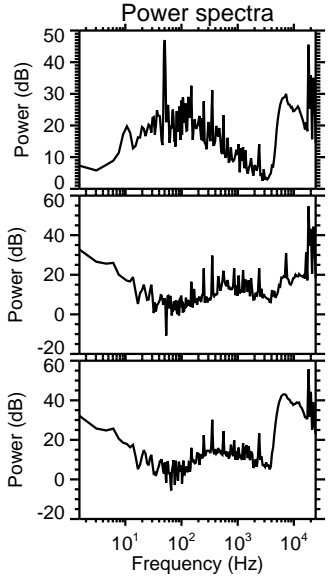
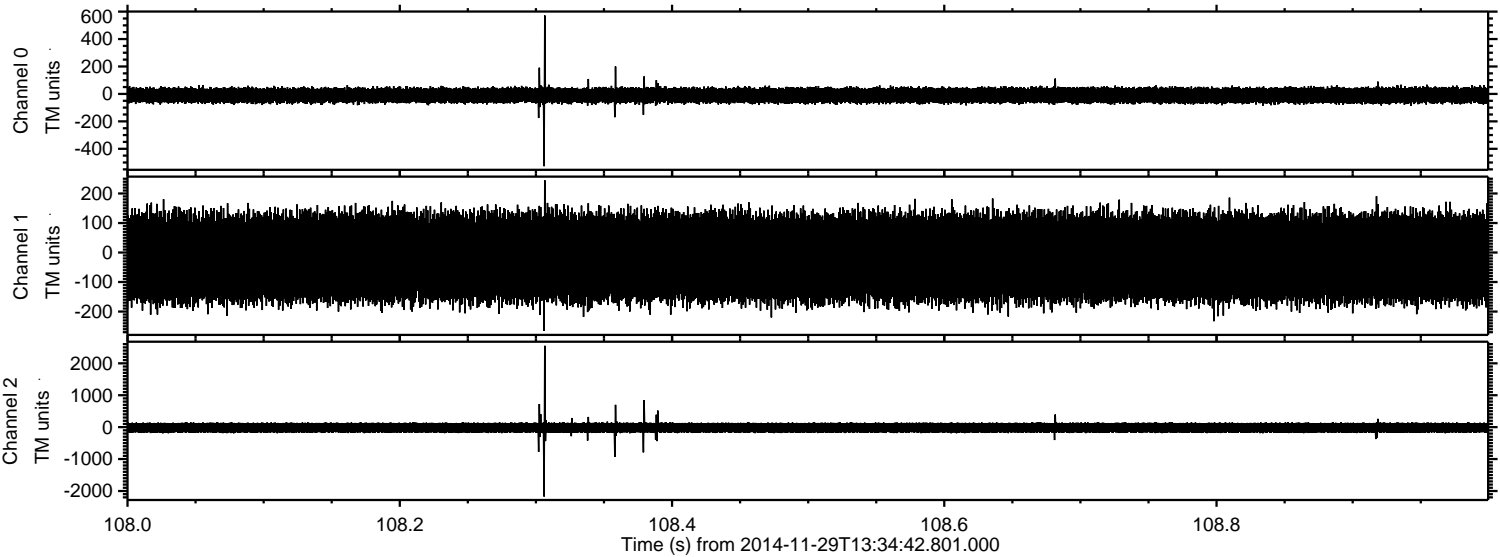
Processed Sun Nov 30 03:29:35 2014 by ELM ver.2012-10-06 from 001\_\_elm20141129\_133441\_\_dat00.bin





ELMAVAN 3D WAVEFORMS (Measured data sampled at 50 kHz) 49801 packets of 144 samples from 2014-11-29T13:34:42.801.000. Part 109/144

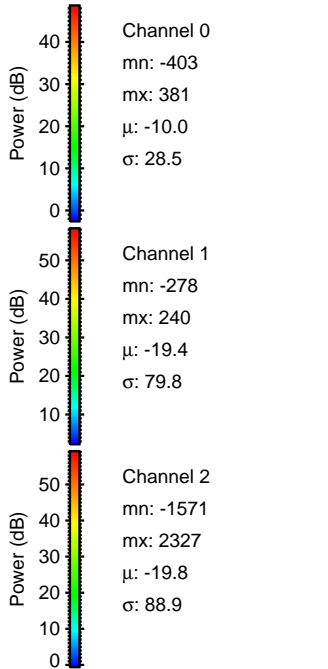
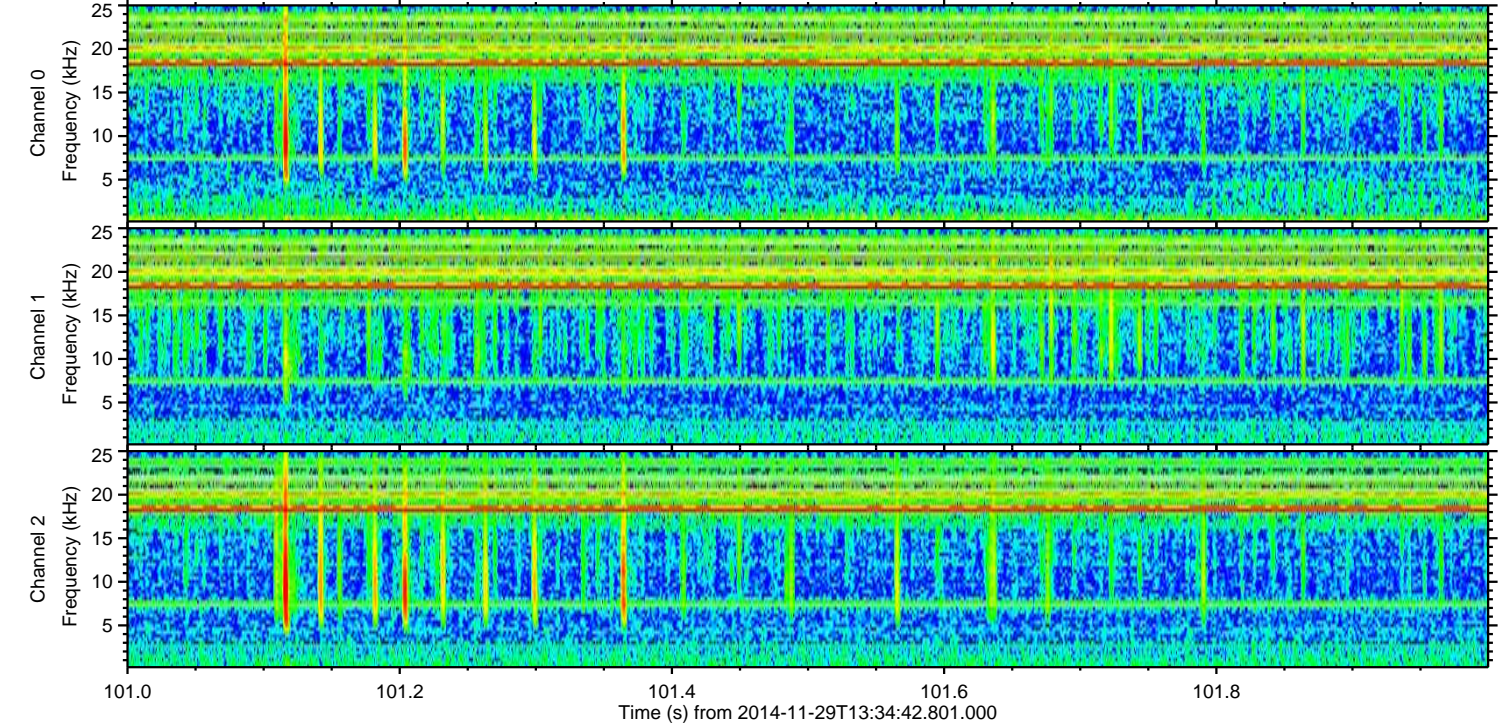
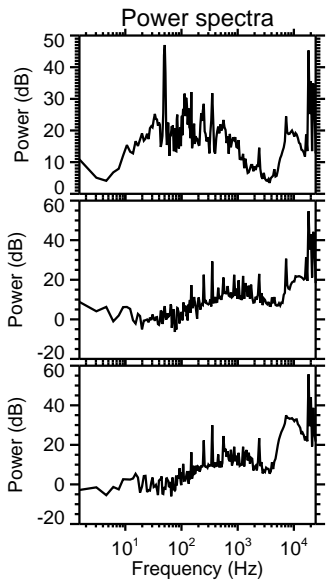
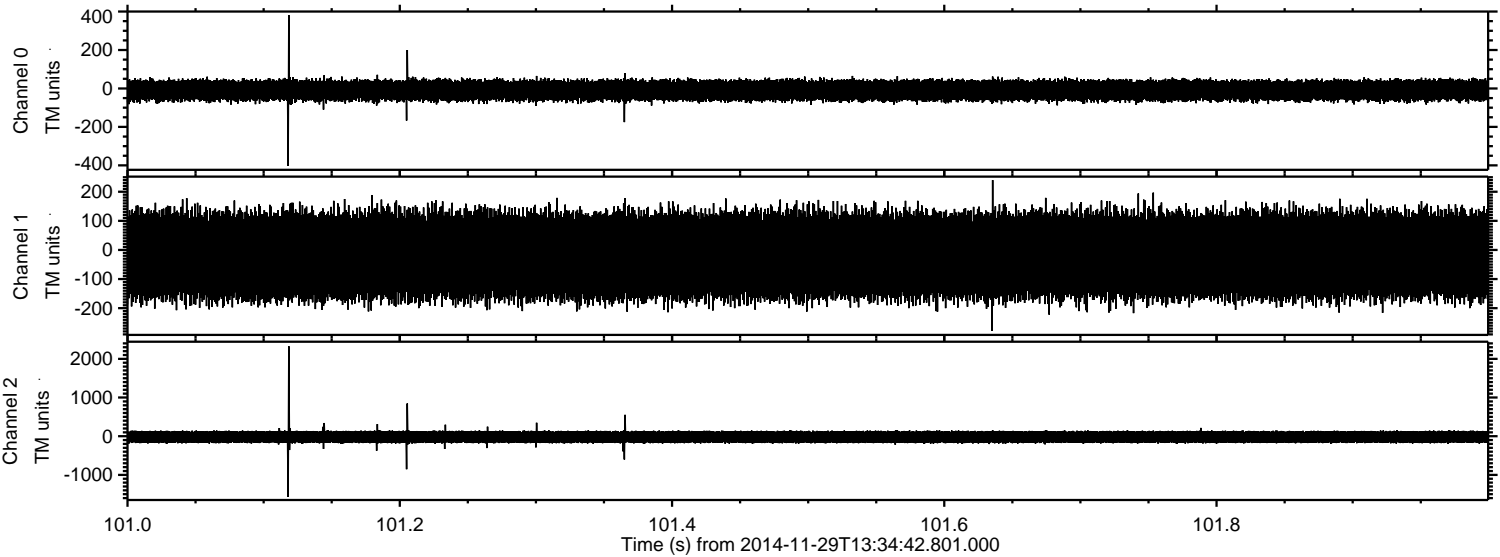
Processed Sun Nov 30 03:29:36 2014 by ELM ver.2012-10-06 from 001\_elm20141129\_133441\_\_dat00.bin





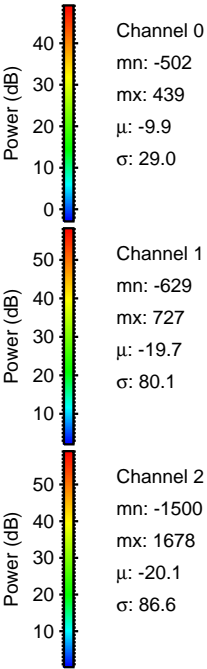
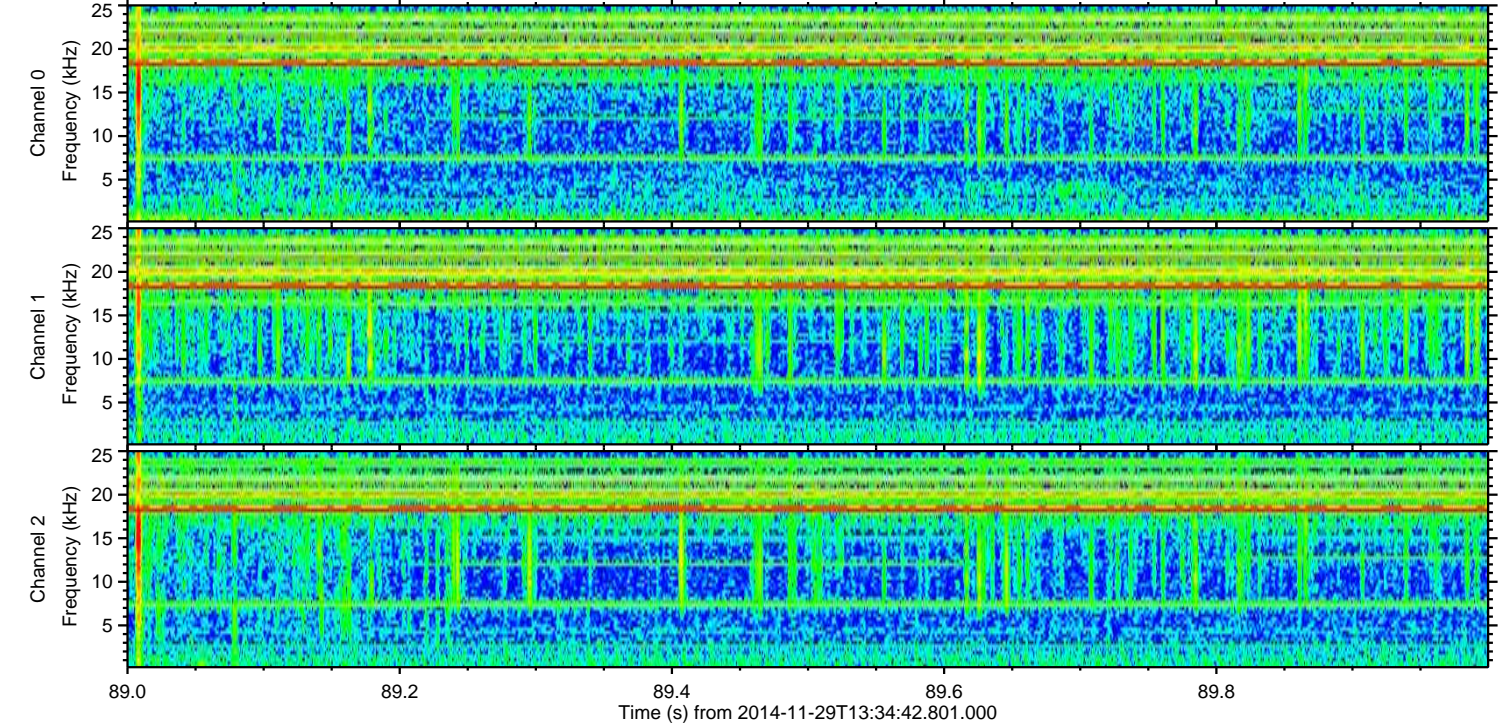
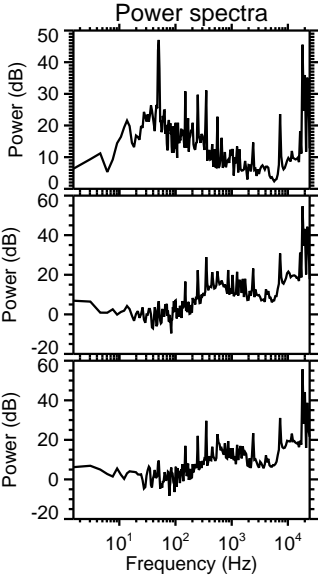
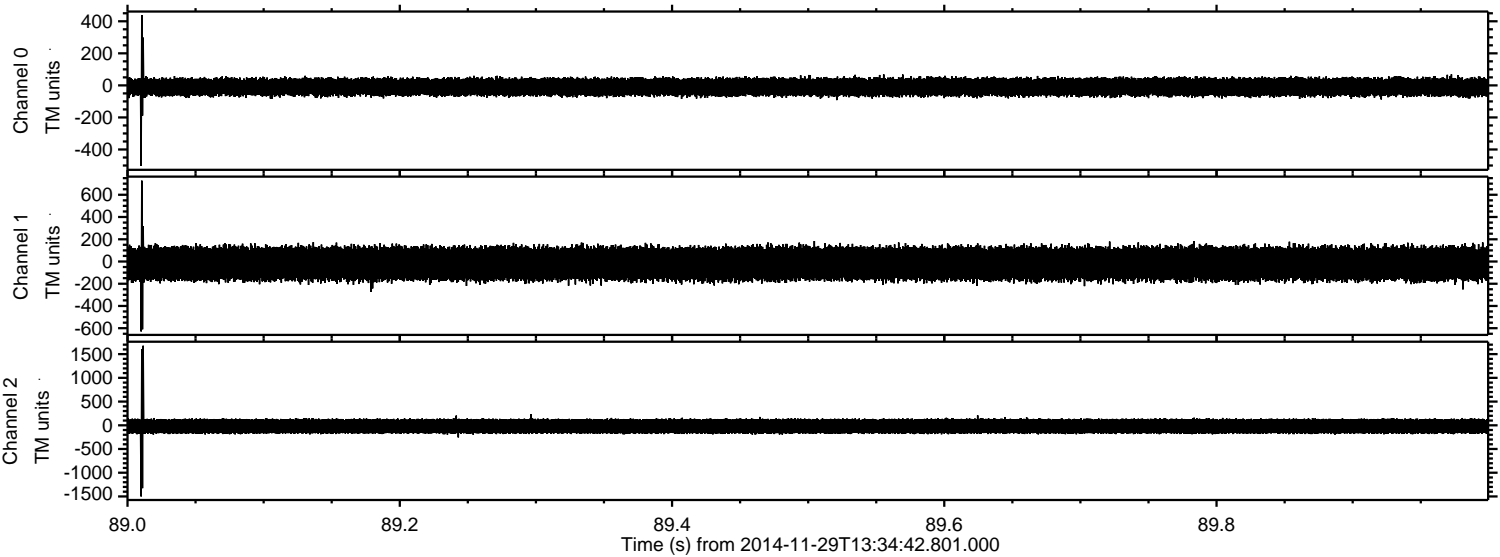
ELMAVAN 3D WAVEFORMS (Measured data sampled at 50 kHz) 49801 packets of 144 samples from 2014-11-29T13:34:42.801.000. Part 102/144

Processed Sun Nov 30 03:29:37 2014 by ELM ver.2012-10-06 from 001\_\_elm20141129\_133441\_\_dat00.bin



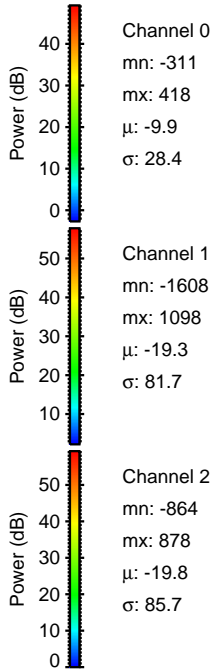
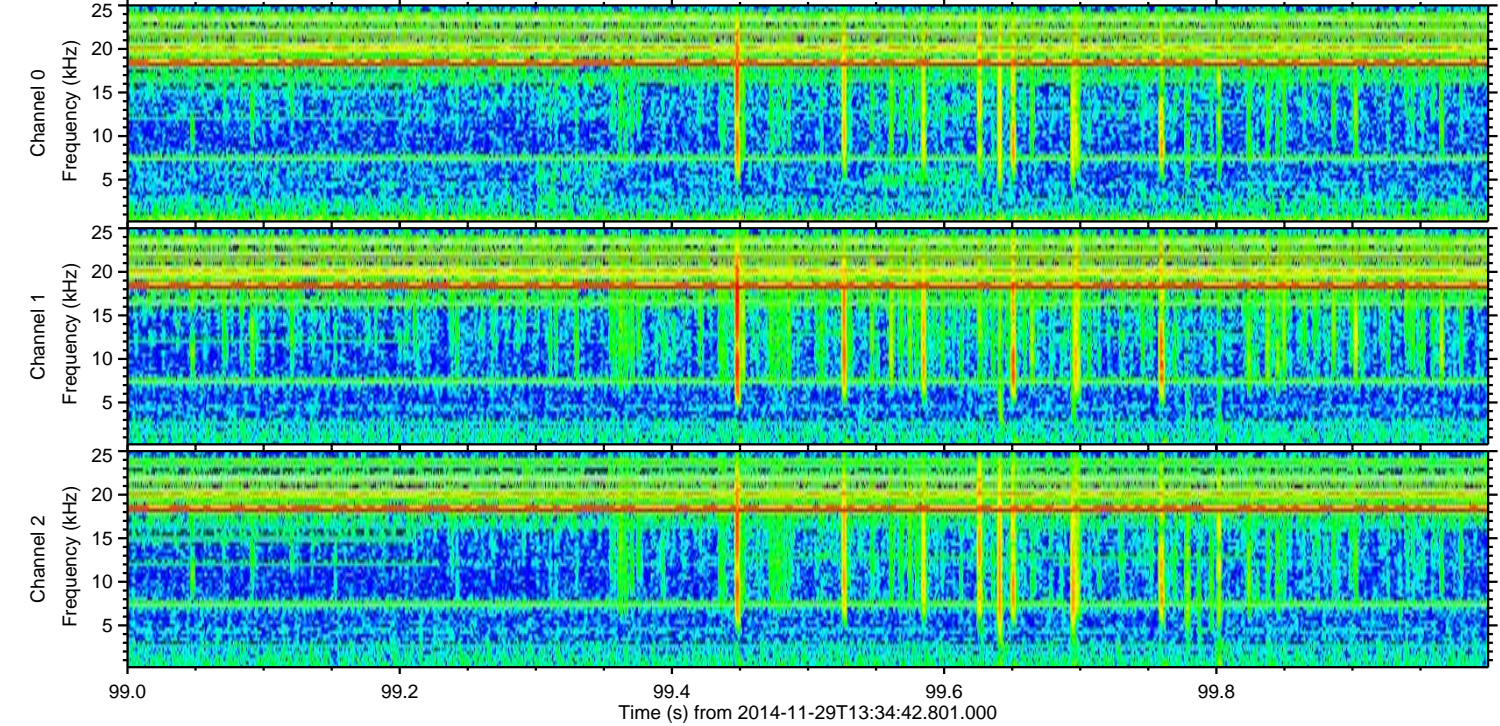
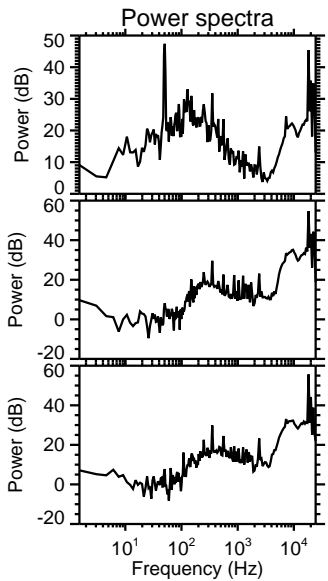
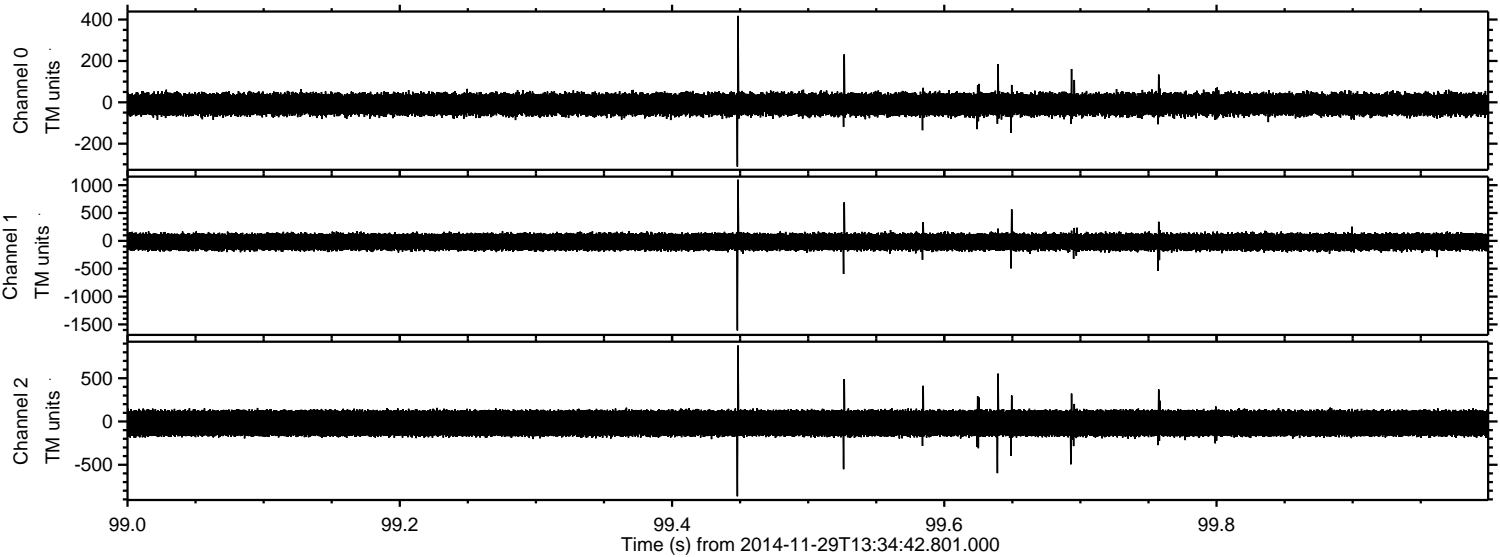


Processed Sun Nov 30 03:29:39 2014 by ELM ver.2012-10-06 from 001\_\_elm20141129\_133441\_\_dat00.bin





Processed Sun Nov 30 03:29:40 2014 by ELM ver.2012-10-06 from 001\_\_elm20141129\_133441\_\_dat00.bin



Channel 0  
mn: -311  
mx: 418  
 $\mu$ : -9.9  
 $\sigma$ : 28.4

Channel 1  
mn: -1608  
mx: 1098  
 $\mu$ : -19.3  
 $\sigma$ : 81.7

Channel 2  
mn: -864  
mx: 878  
 $\mu$ : -19.8  
 $\sigma$ : 85.7



Processed Sun Nov 30 03:29:41 2014 by ELM ver.2012-10-06 from 001\_\_elm20141129\_133441\_\_dat00.bin

