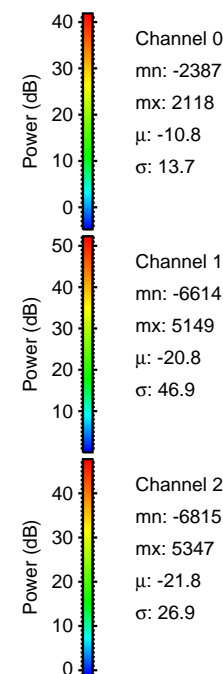
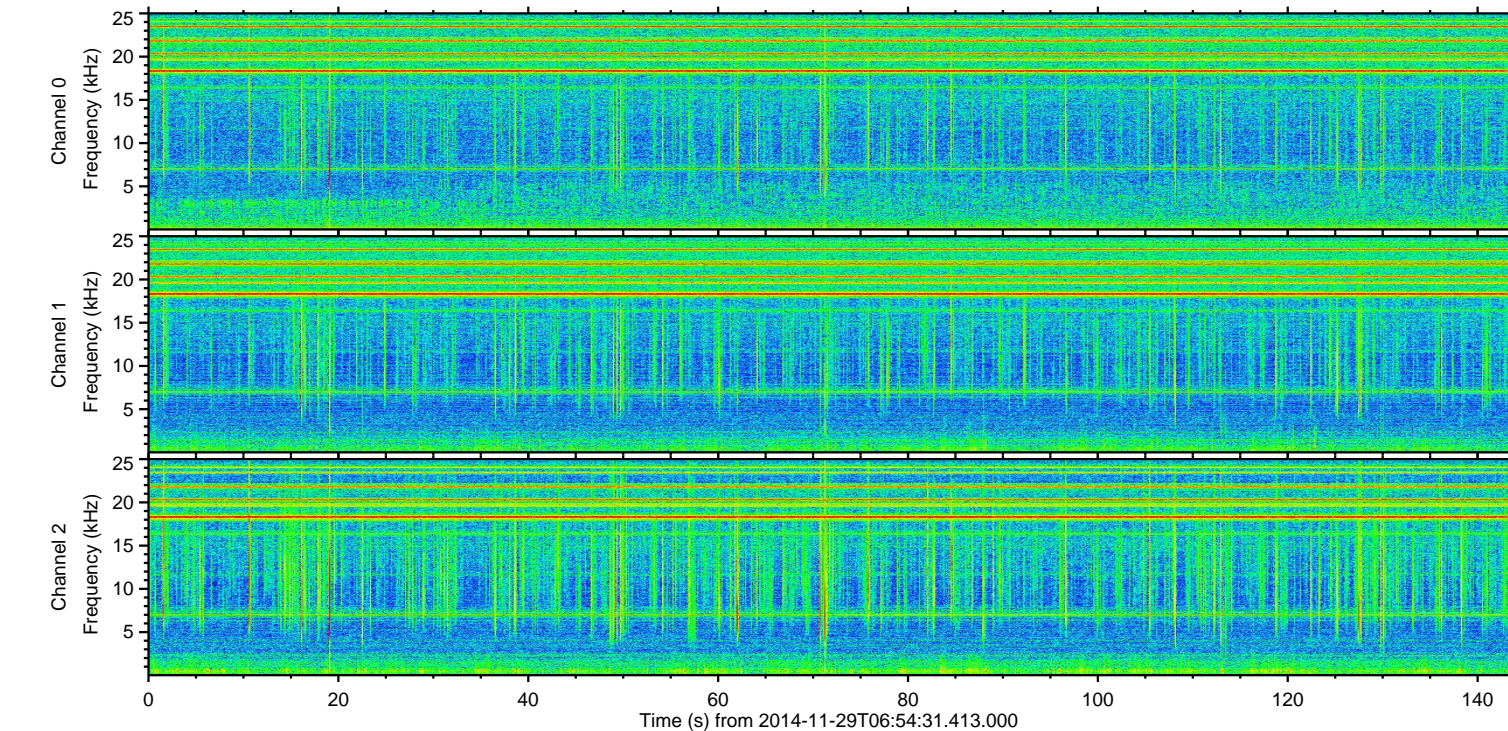
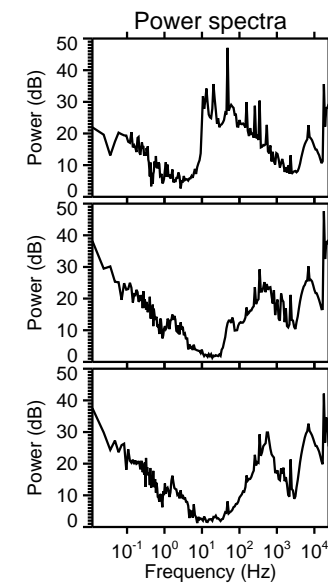
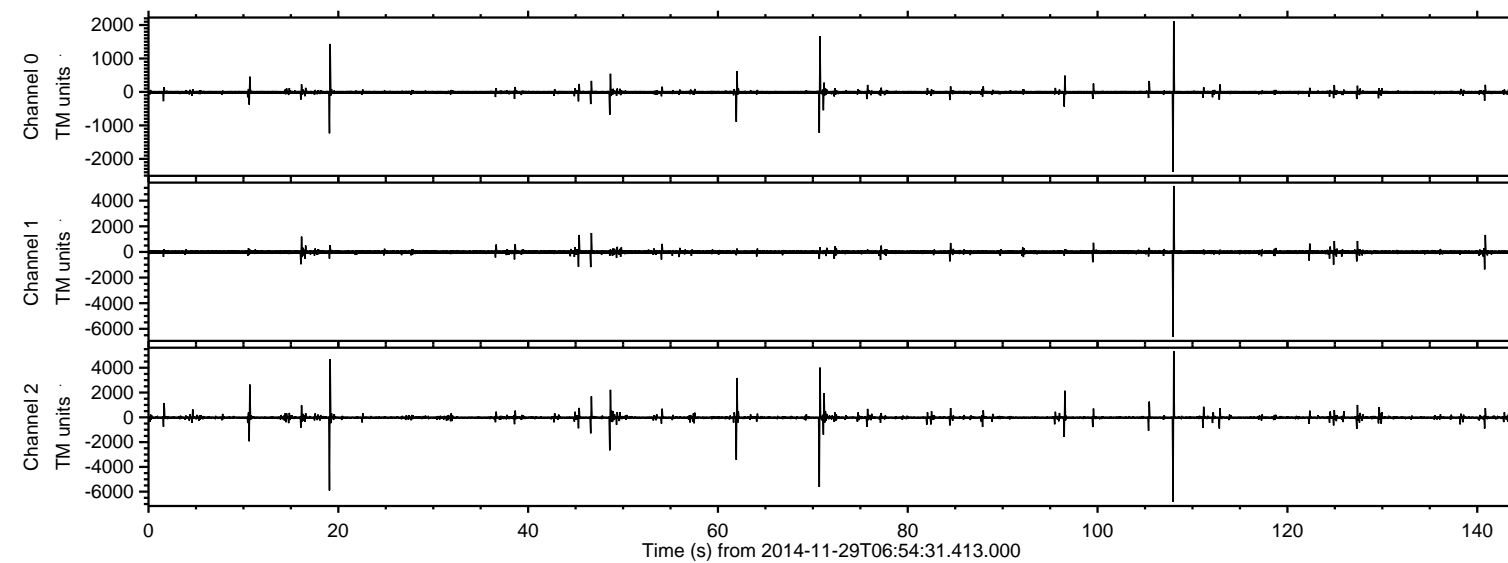


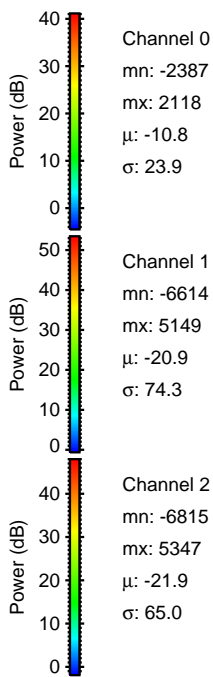
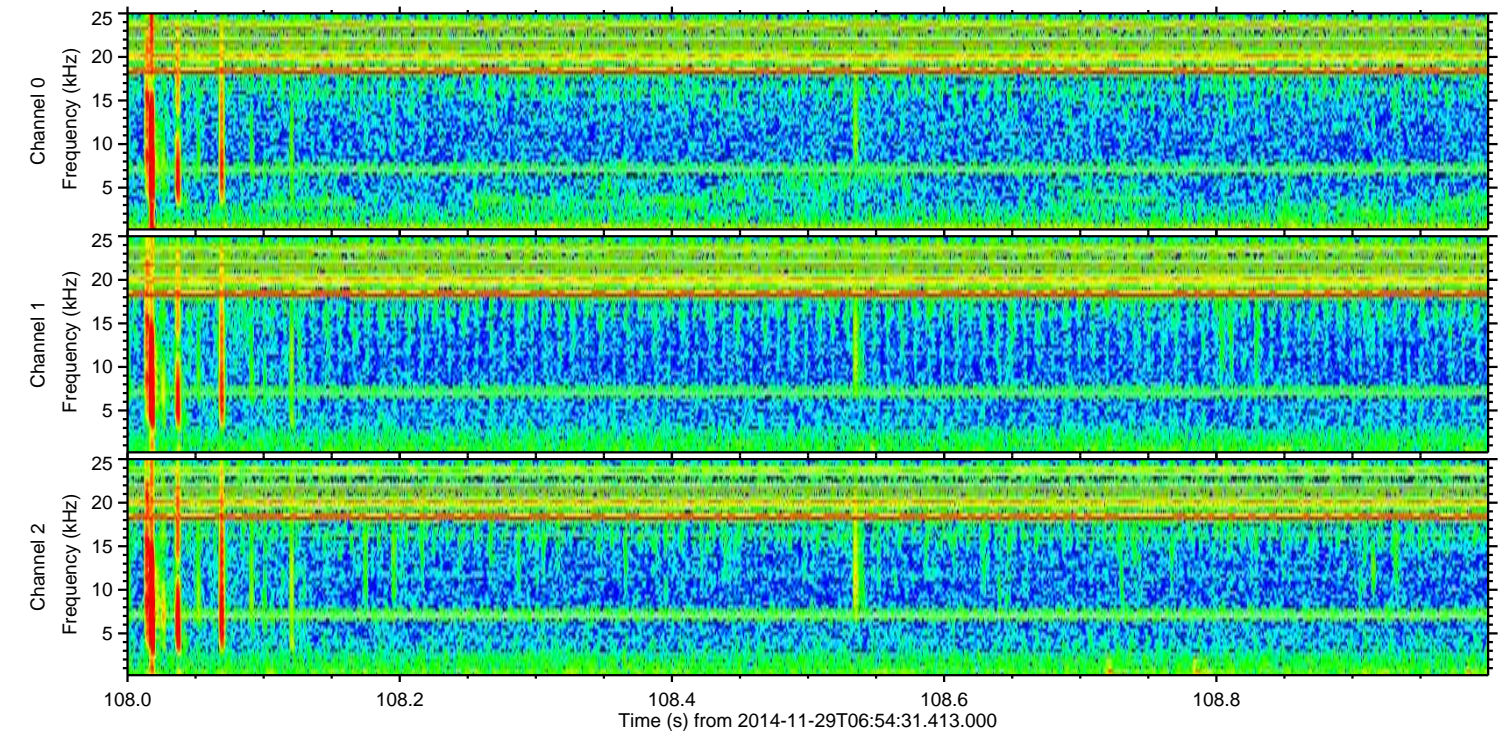
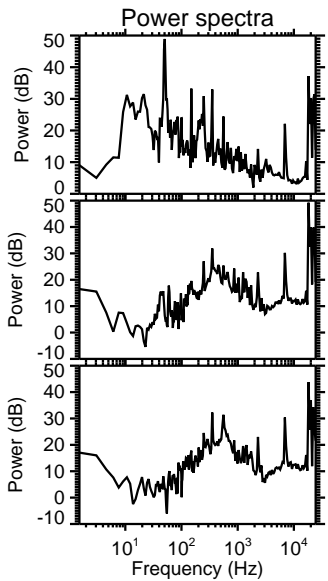
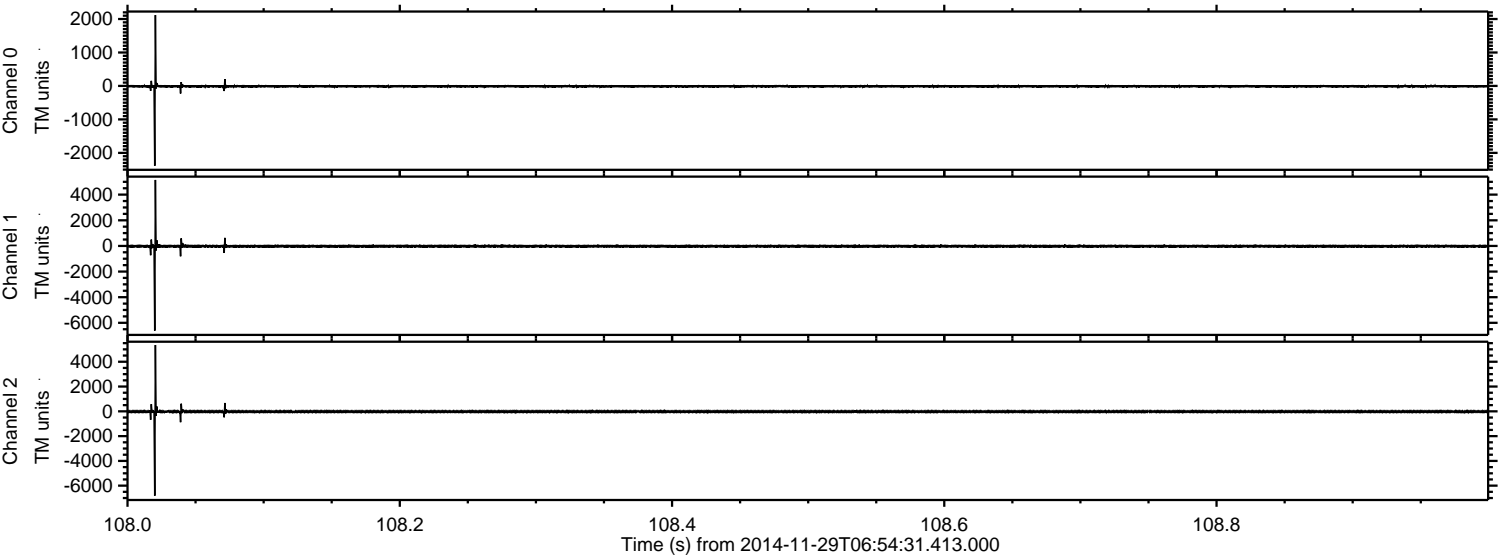
ELMAVAN 3D WAVEFORMS (Measured data sampled at 50 kHz) 49779 packets of 144 samples from 2014-11-29T06:54:31.413.000.

Processed Sun Nov 30 01:37:41 2014 by ELM ver.2012-10-06 from 001__elm20141129_065430__dat00.bin

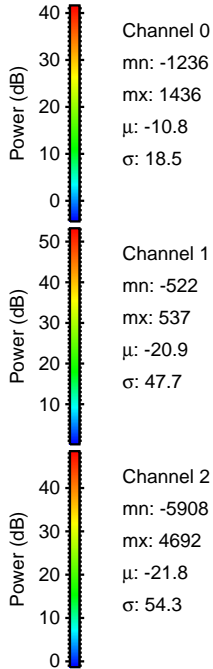
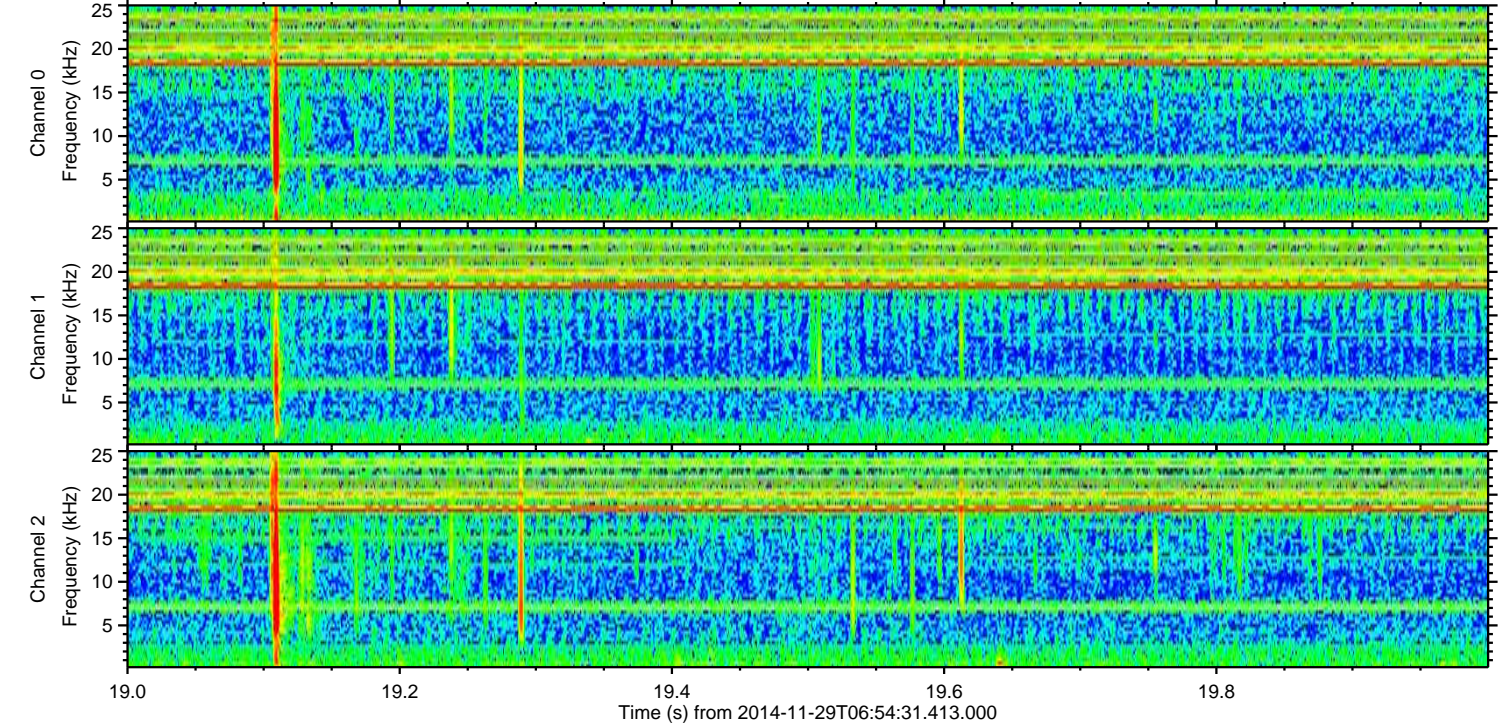
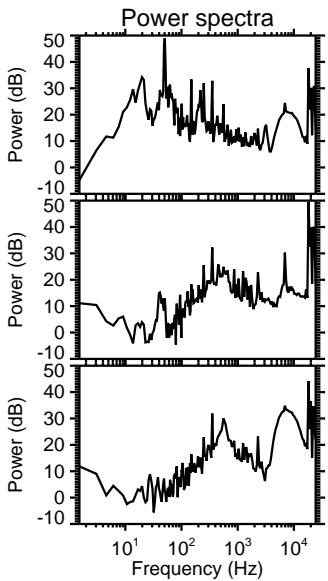
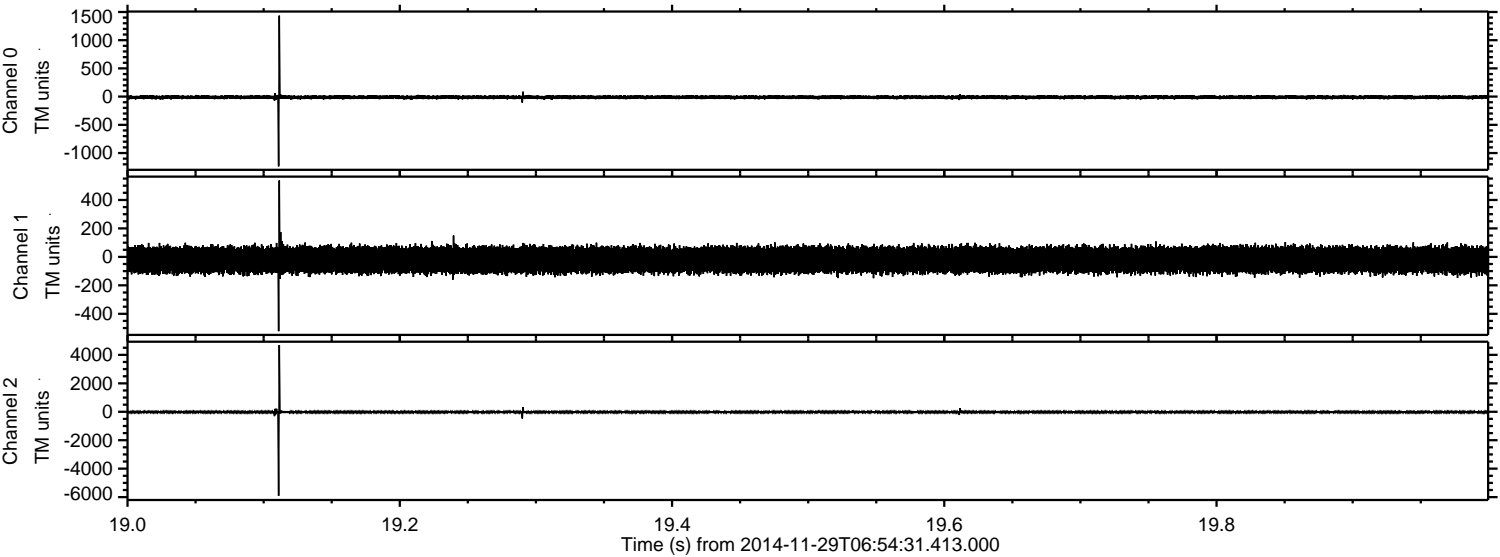


ELMAVAN 3D WAVEFORMS (Measured data sampled at 50 kHz) 49779 packets of 144 samples from 2014-11-29T06:54:31.413.000. Part 109/144

Processed Sun Nov 30 01:37:57 2014 by ELM ver.2012-10-06 from 001__elm20141129_065430__dat00.bin

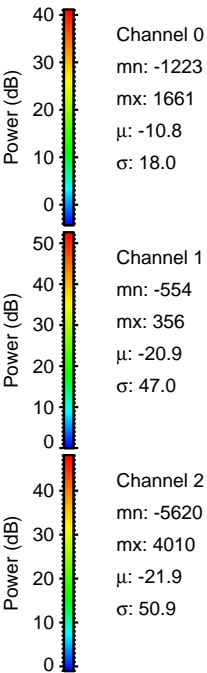
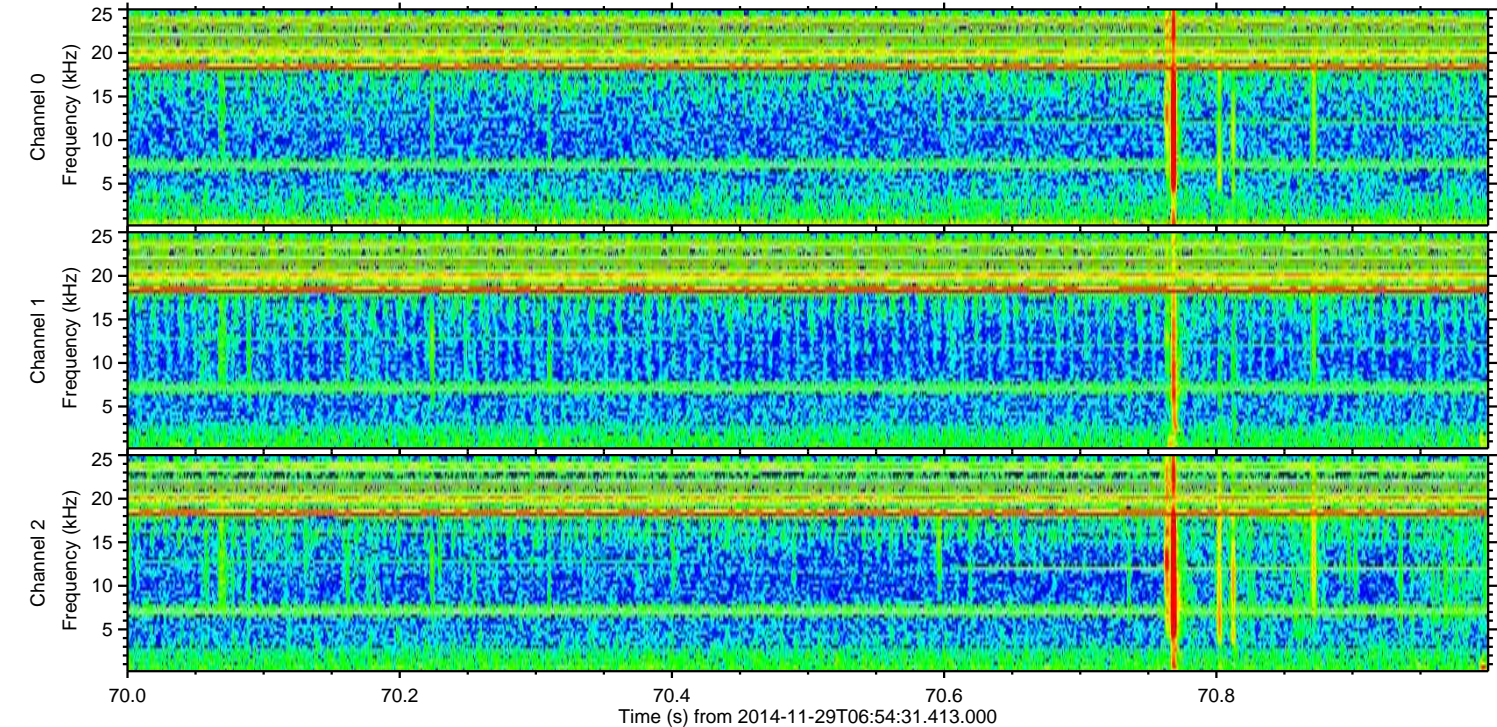
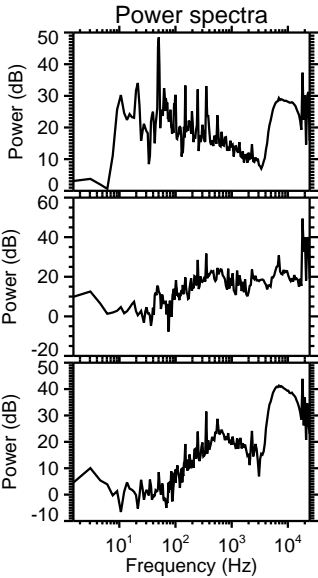
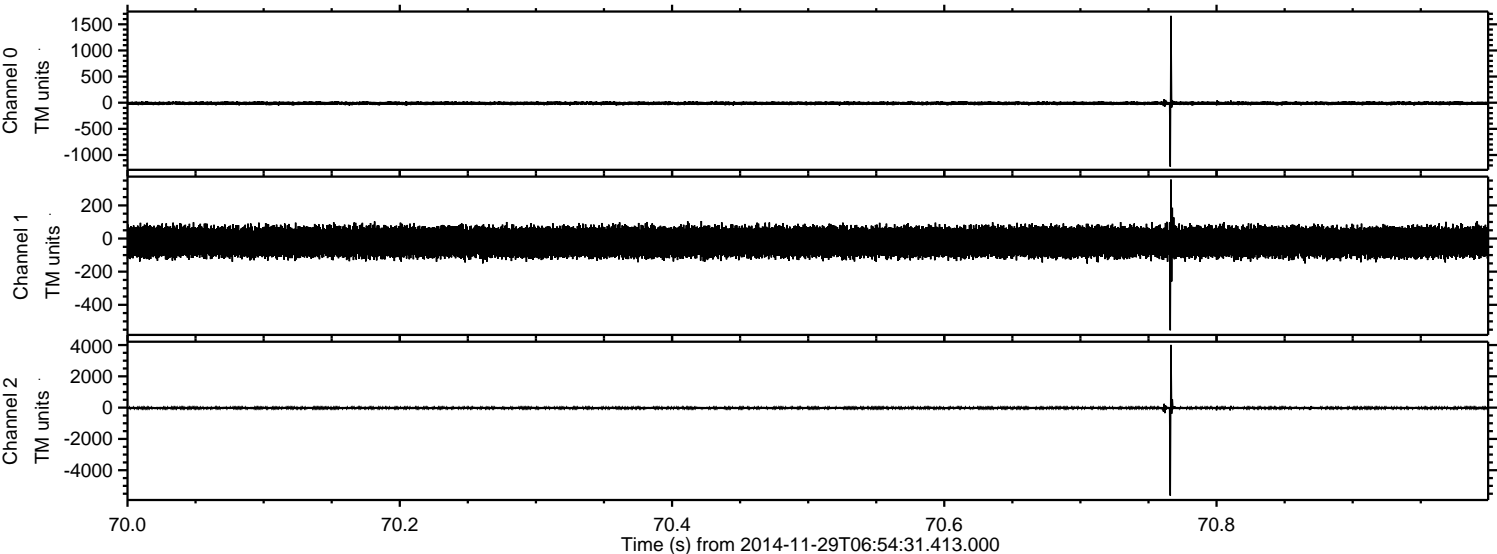


Processed Sun Nov 30 01:37:58 2014 by ELM ver.2012-10-06 from 001__elm20141129_065430__dat00.bin

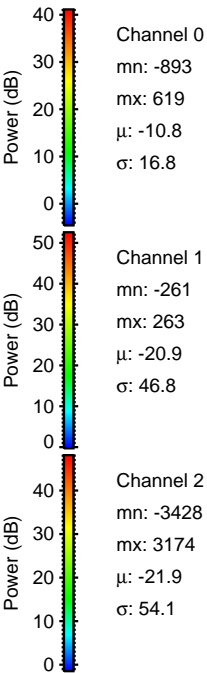
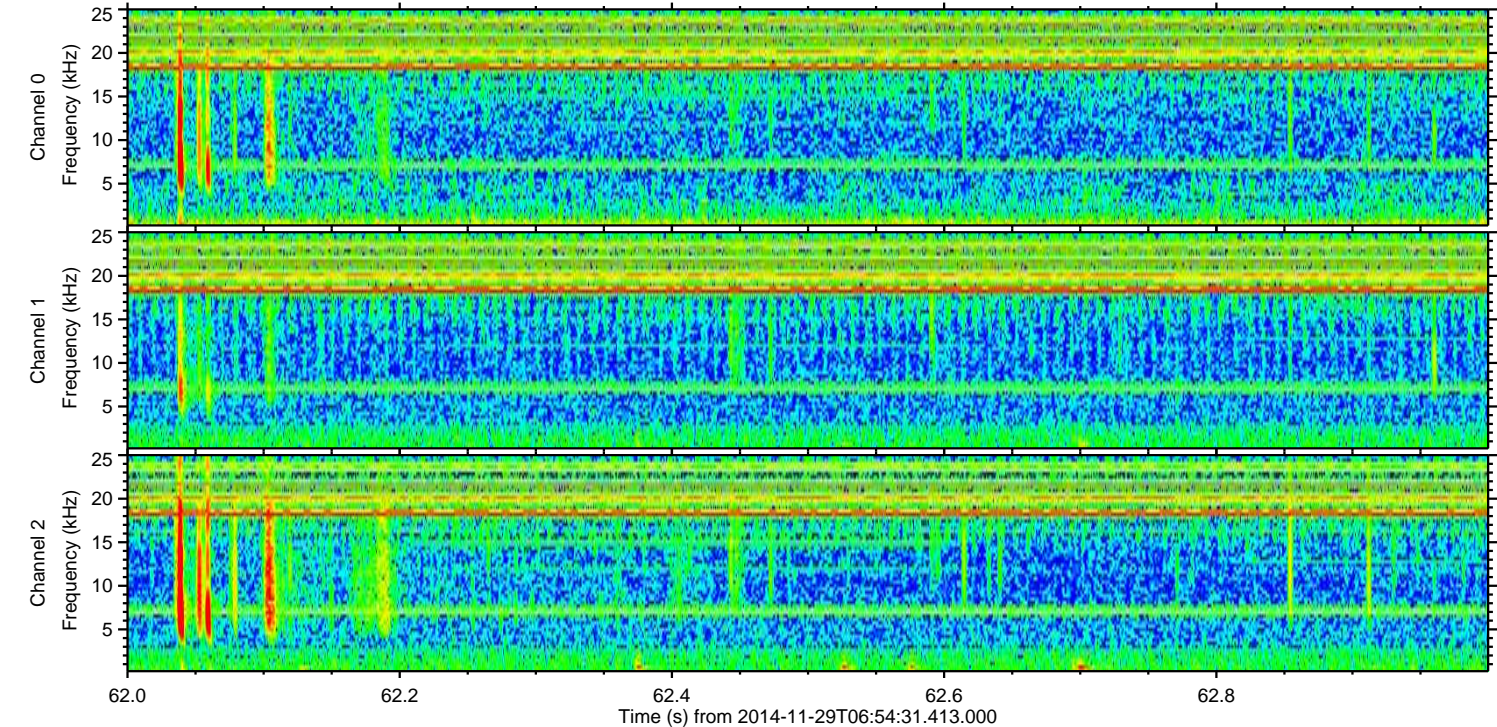
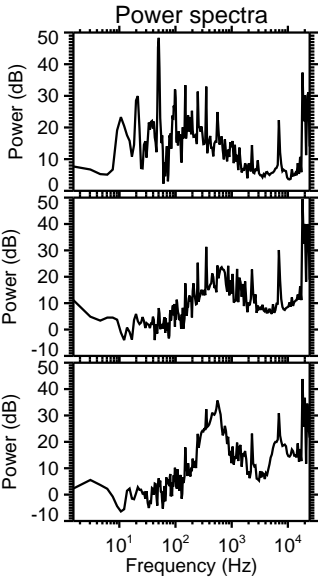
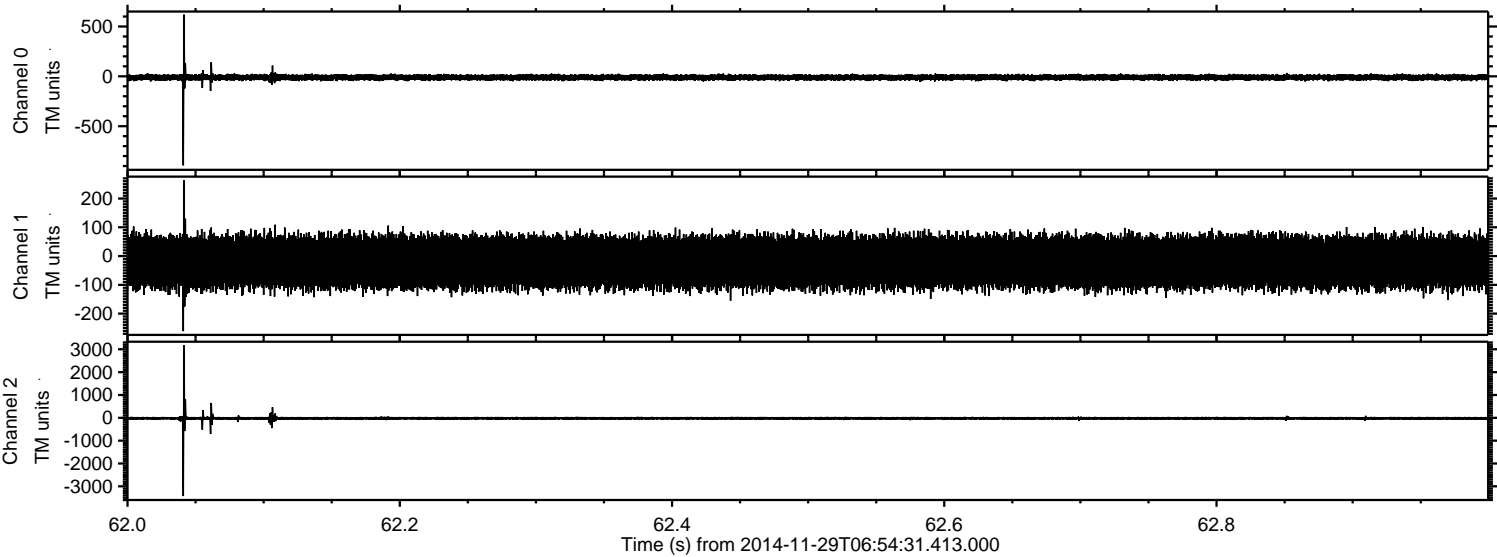


ELMAVAN 3D WAVEFORMS (Measured data sampled at 50 kHz) 49779 packets of 144 samples from 2014-11-29T06:54:31.413.000. Part 71/144

Processed Sun Nov 30 01:37:59 2014 by ELM ver.2012-10-06 from 001__elm20141129_065430__dat00.bin

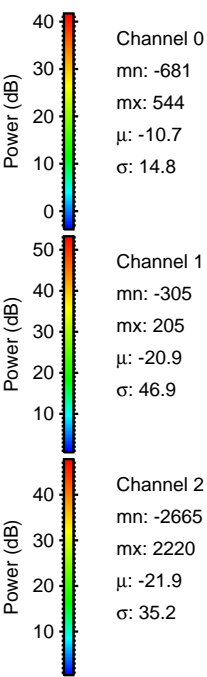
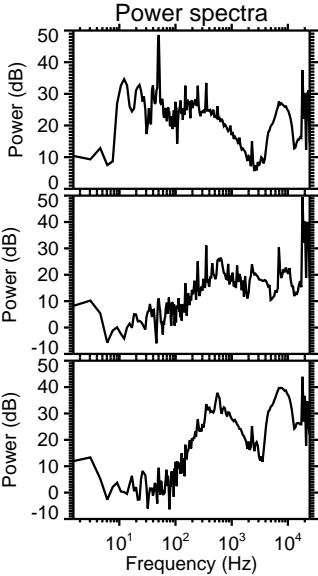
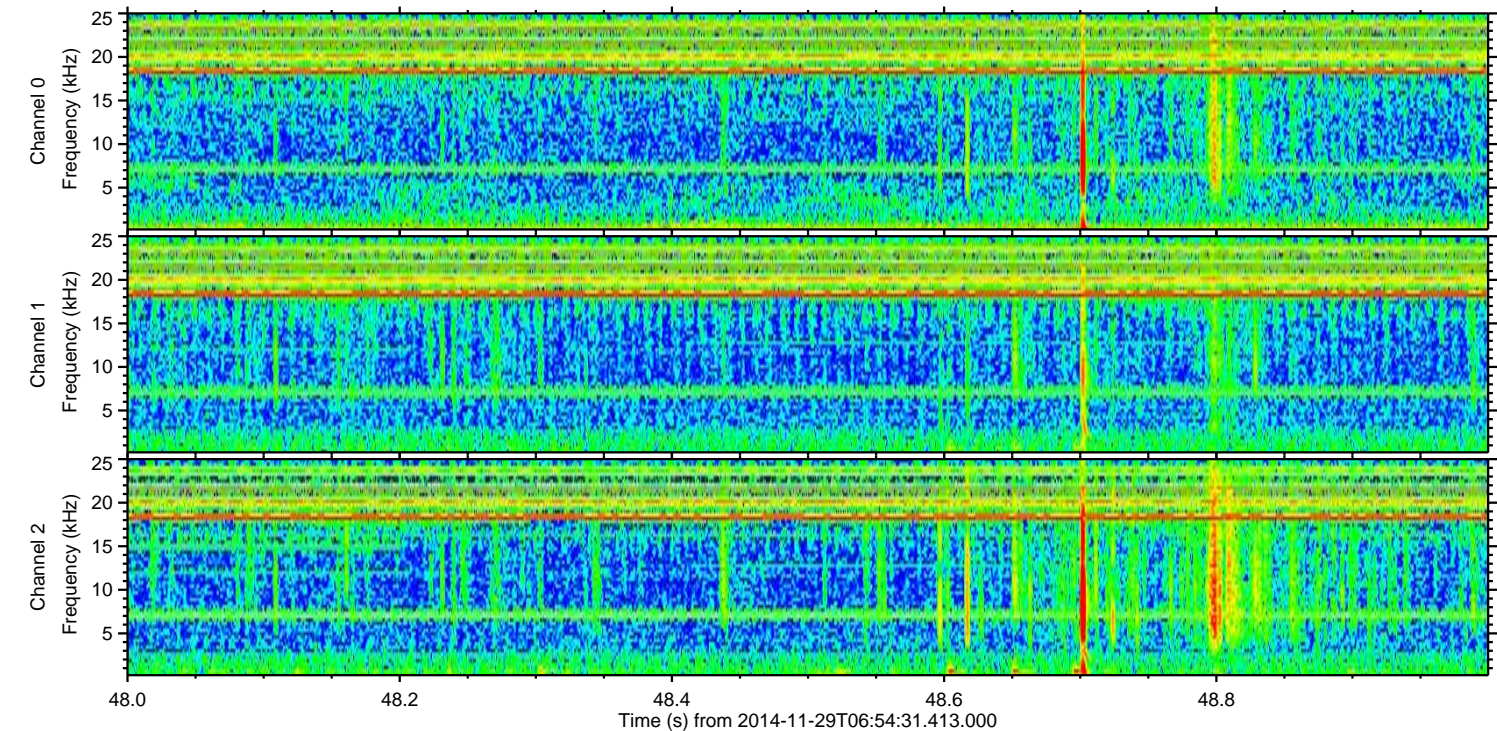
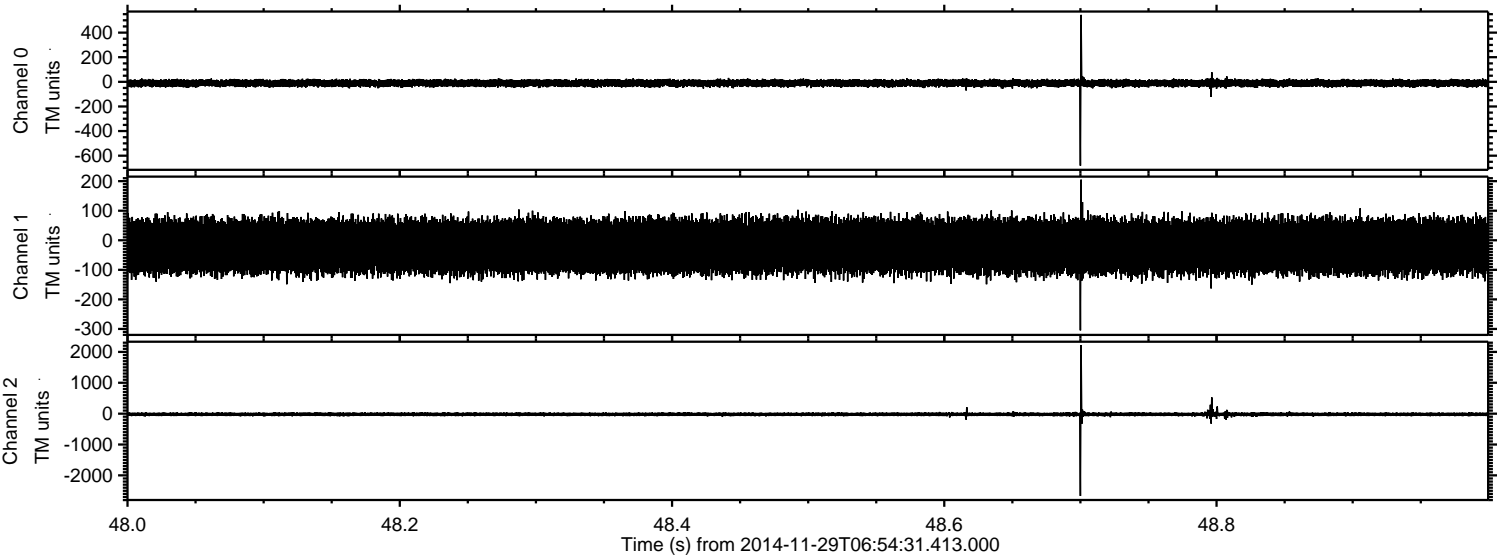


Processed Sun Nov 30 01:38:00 2014 by ELM ver.2012-10-06 from 001__elm20141129_065430__dat00.bin



ELMAVAN 3D WAVEFORMS (Measured data sampled at 50 kHz) 49779 packets of 144 samples from 2014-11-29T06:54:31.413.000. Part 49/144

Processed Sun Nov 30 01:38:01 2014 by ELM ver.2012-10-06 from 001__elm20141129_065430__dat00.bin



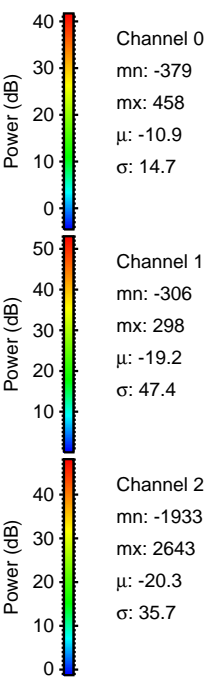
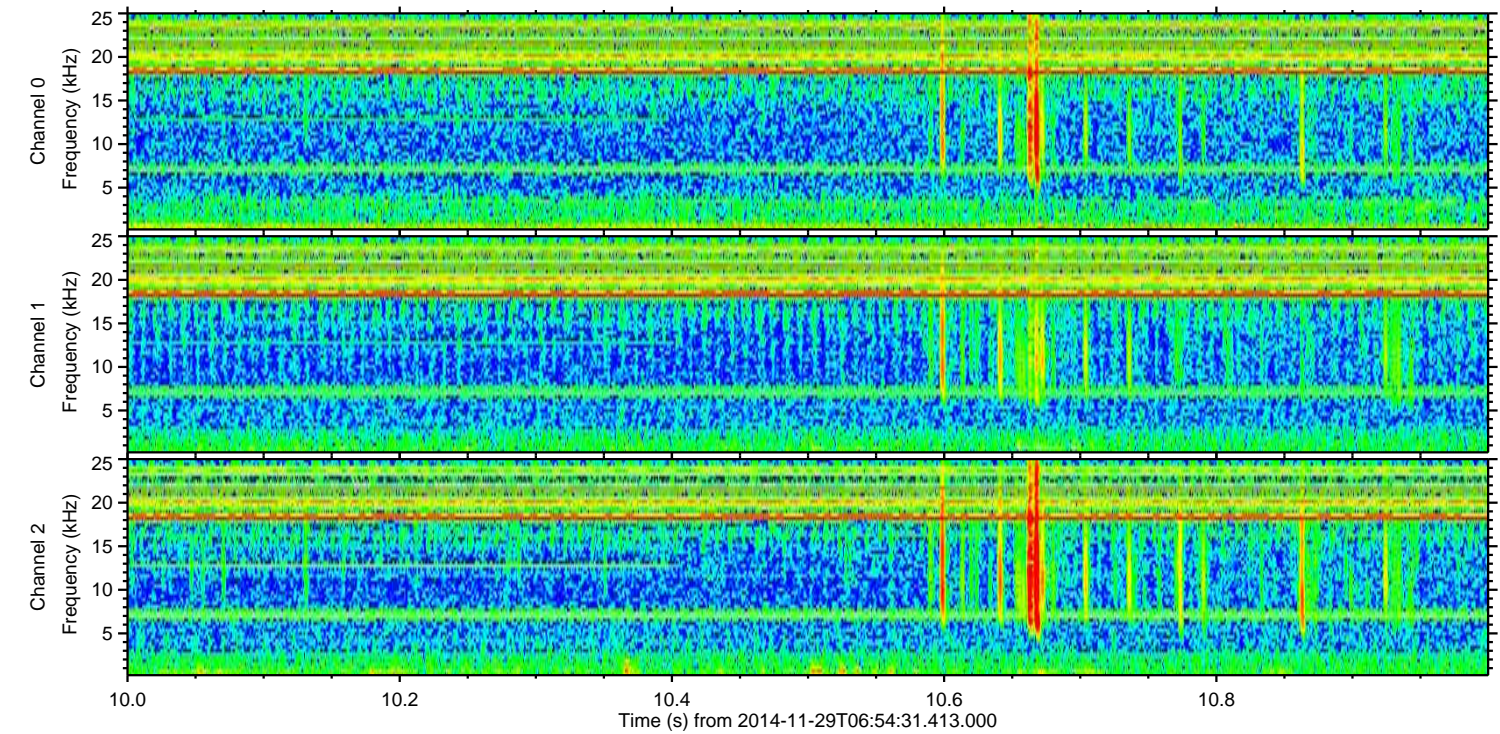
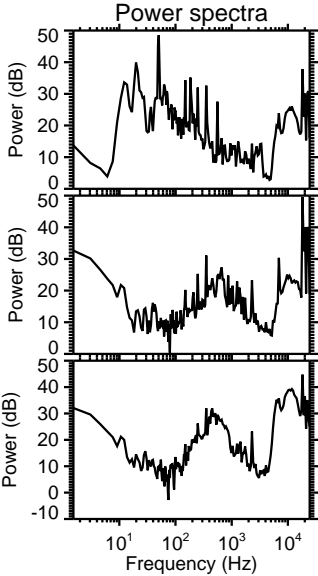
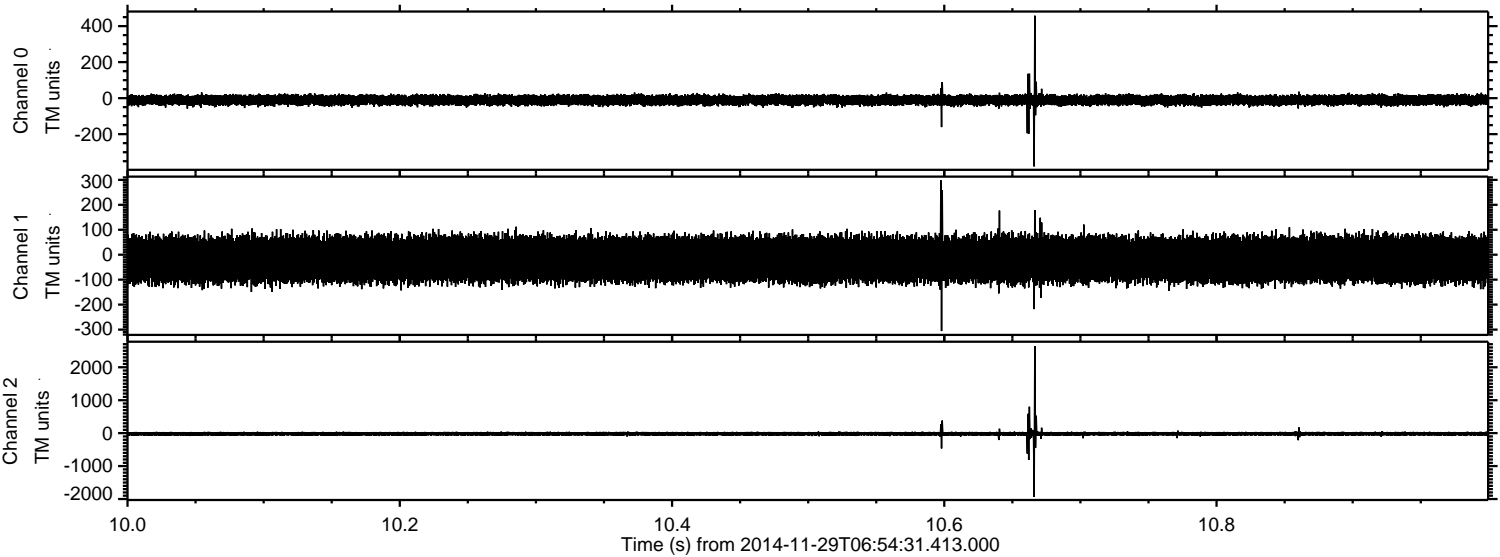
Channel 0
mn: -681
mx: 544
 μ : -10.7
 σ : 14.8

Channel 1
mn: -305
mx: 205
 μ : -20.9
 σ : 46.9

Channel 2
mn: -2665
mx: 2220
 μ : -21.9
 σ : 35.2

ELMAVAN 3D WAVEFORMS (Measured data sampled at 50 kHz) 49779 packets of 144 samples from 2014-11-29T06:54:31.413.000. Part 11/144

Processed Sun Nov 30 01:38:02 2014 by ELM ver.2012-10-06 from 001__elm20141129_065430__dat00.bin

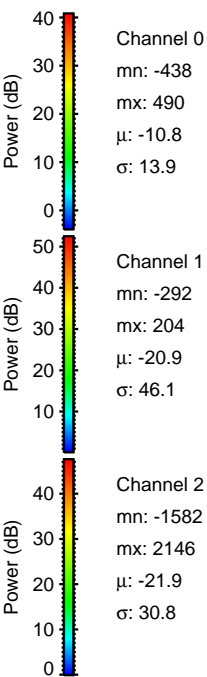
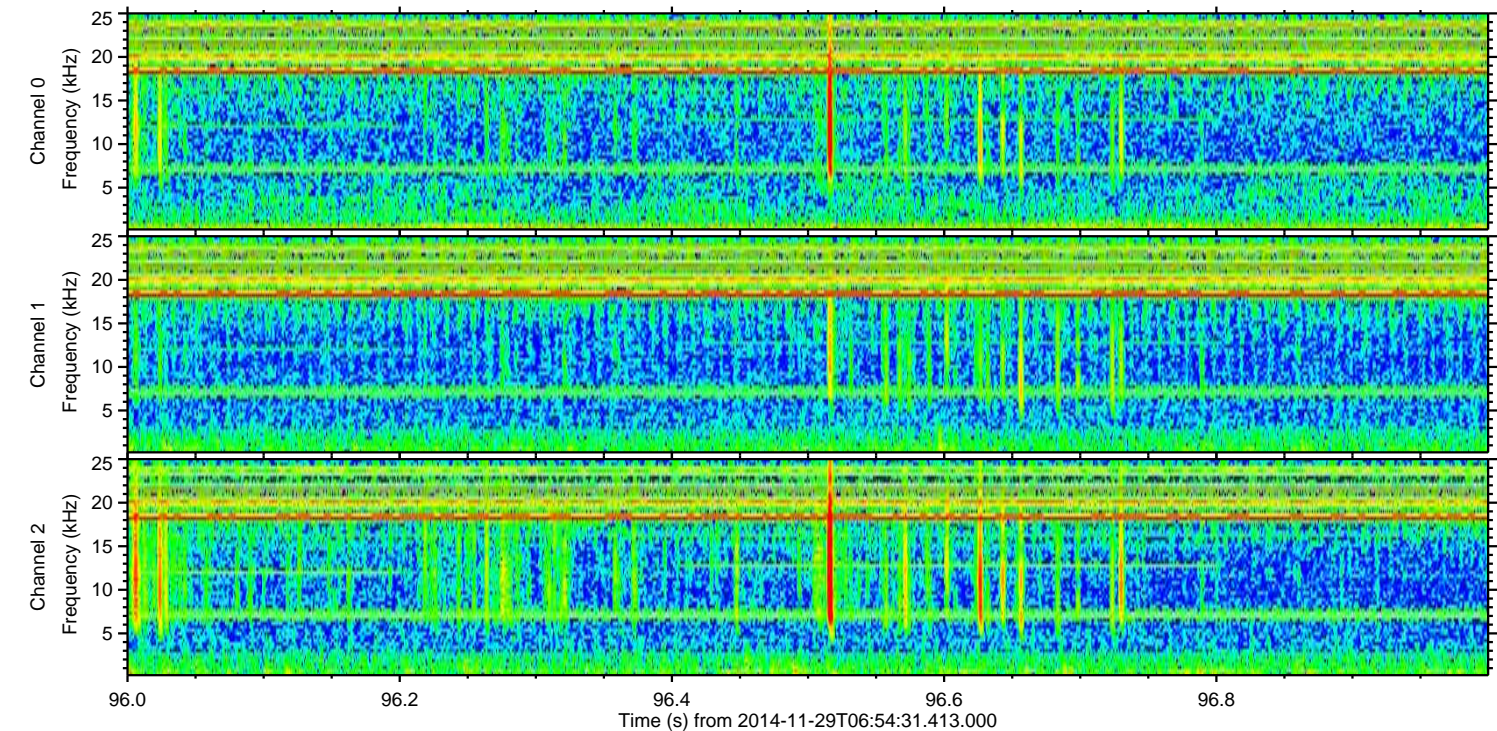
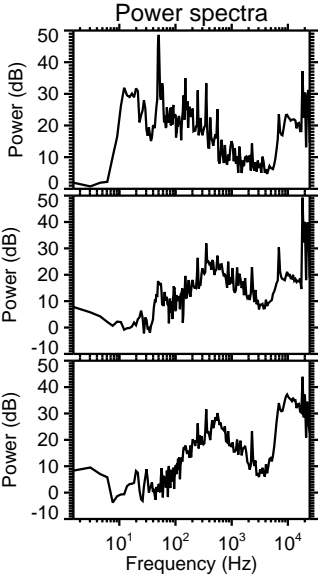
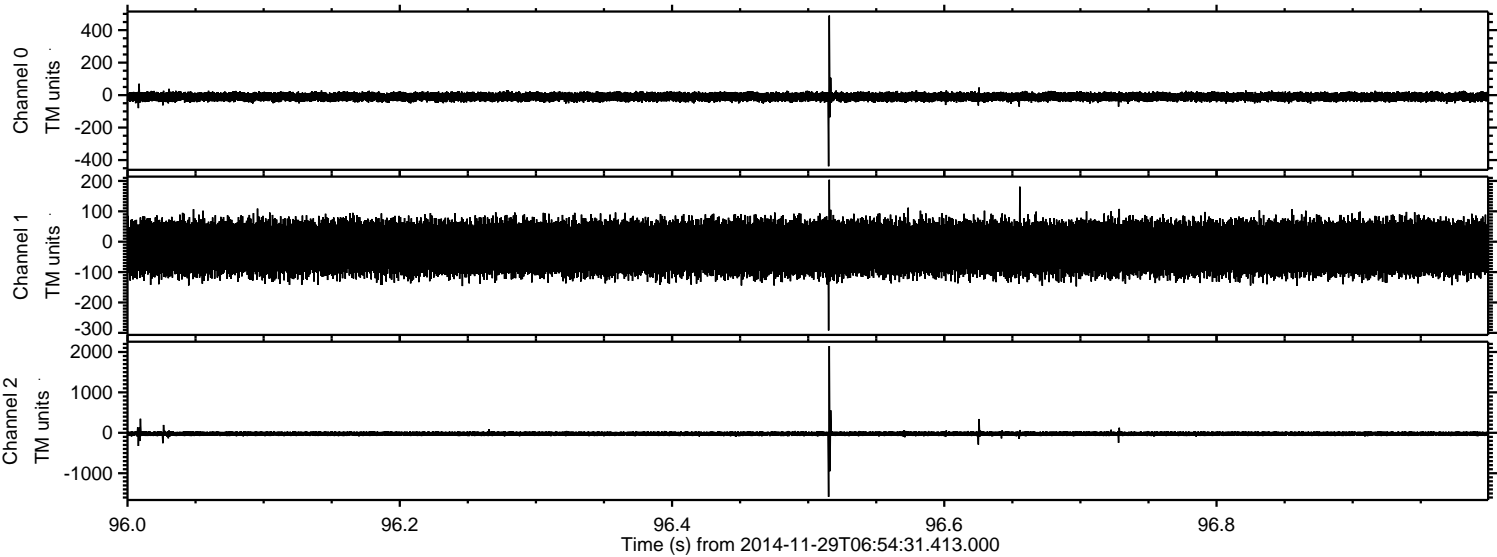


Channel 0
mn: -379
mx: 458
 μ : -10.9
 σ : 14.7

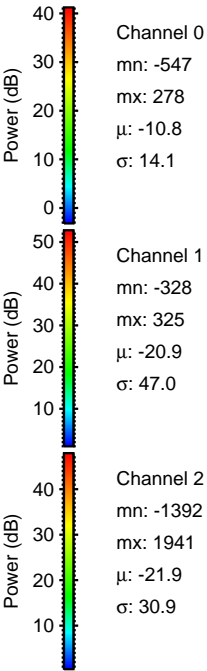
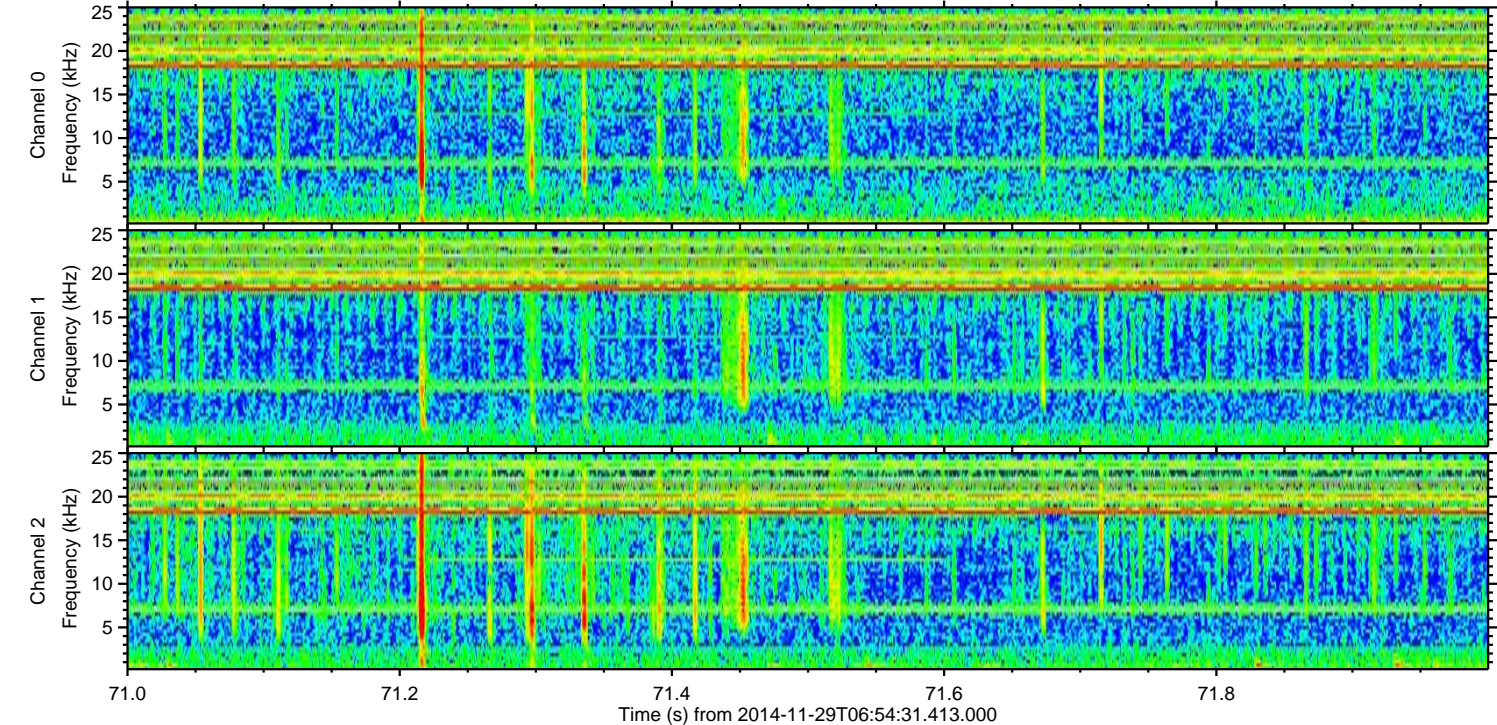
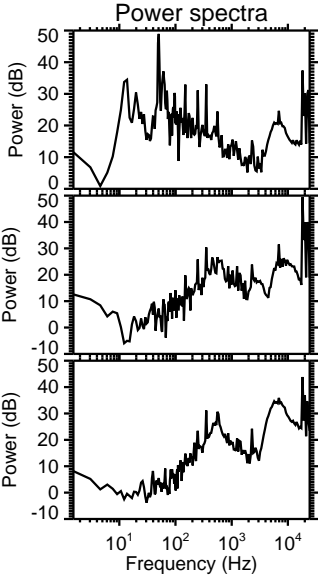
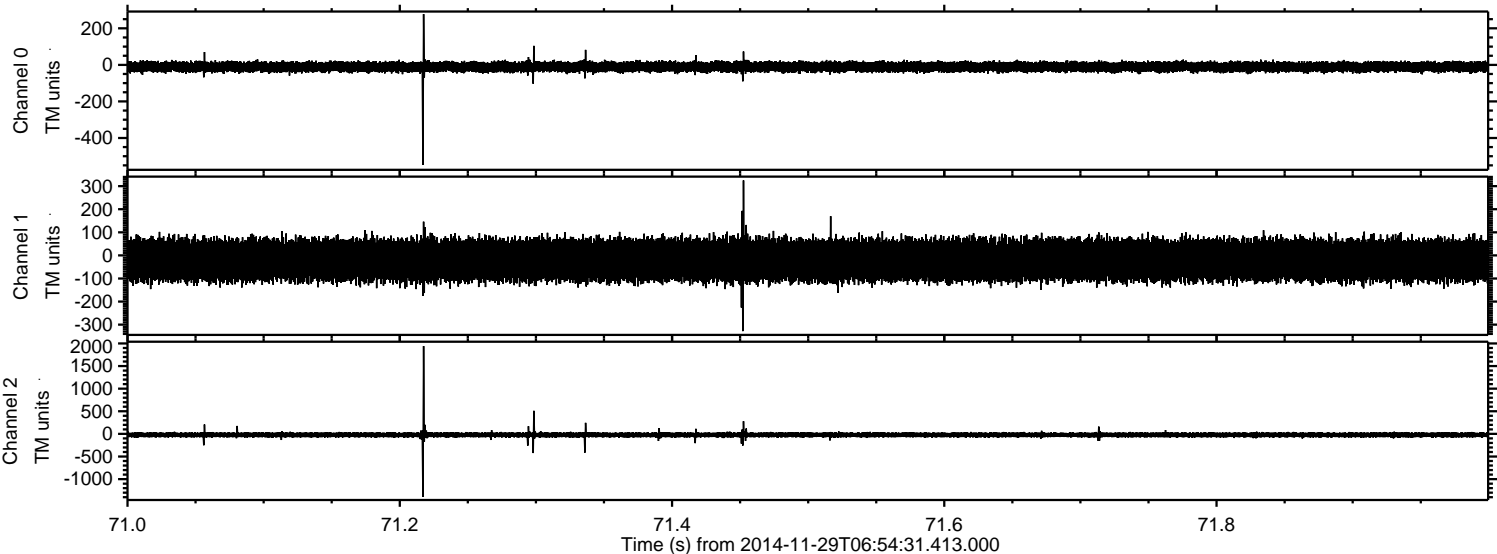
Channel 1
mn: -306
mx: 298
 μ : -19.2
 σ : 47.4

Channel 2
mn: -1933
mx: 2643
 μ : -20.3
 σ : 35.7

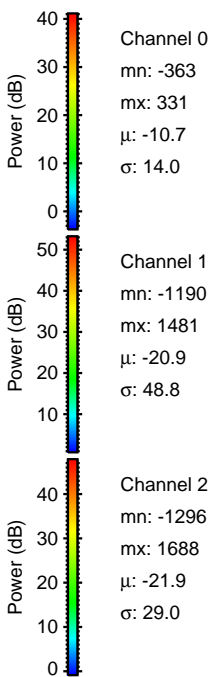
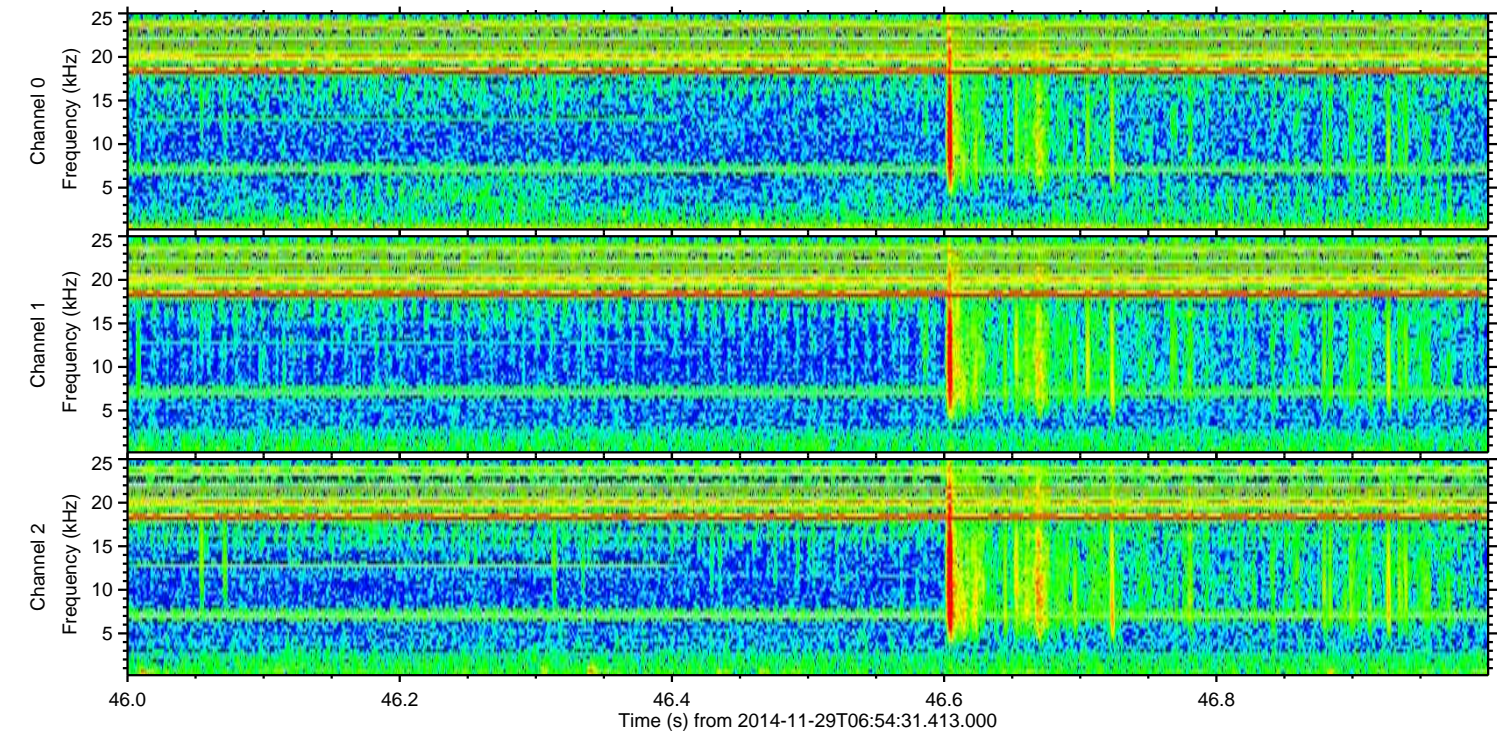
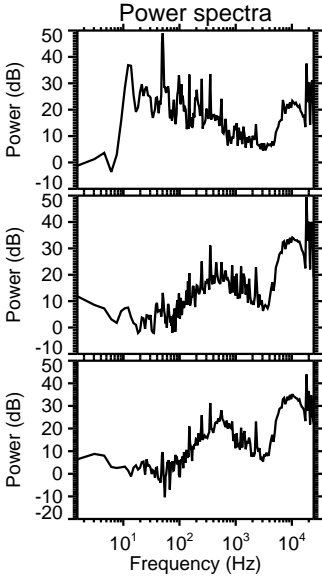
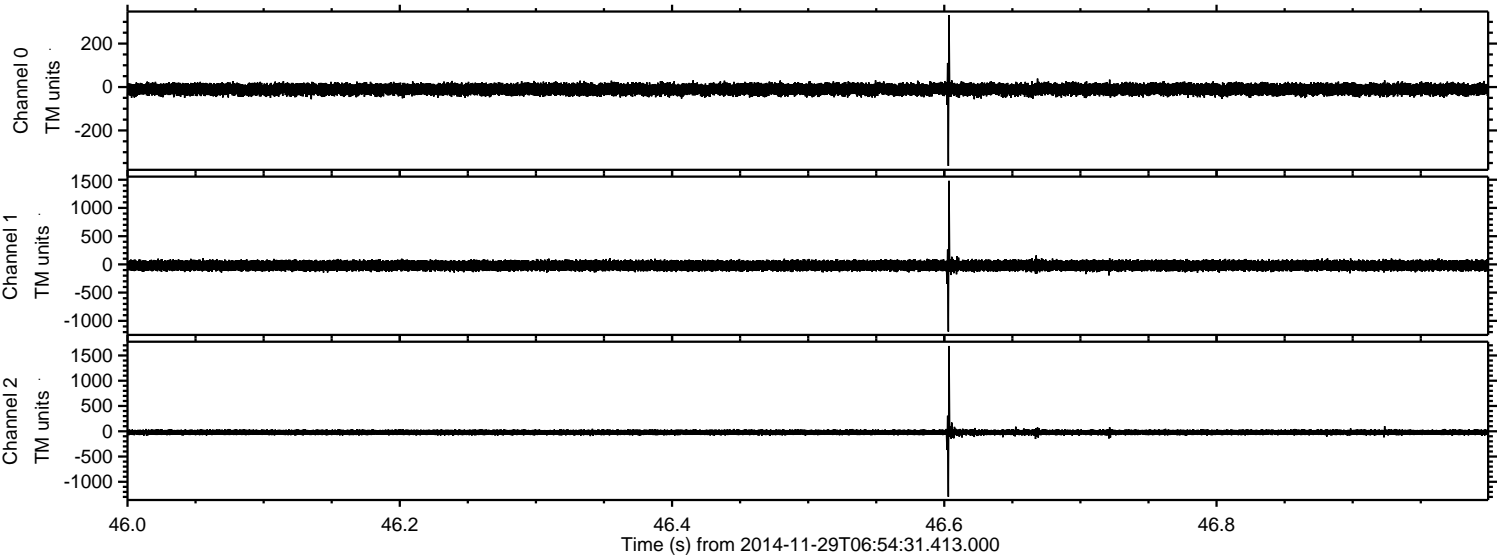
Processed Sun Nov 30 01:38:04 2014 by ELM ver.2012-10-06 from 001__elm20141129_065430__dat00.bin



Processed Sun Nov 30 01:38:05 2014 by ELM ver.2012-10-06 from 001__elm20141129_065430__dat00.bin



Processed Sun Nov 30 01:38:06 2014 by ELM ver.2012-10-06 from 001__elm20141129_065430__dat00.bin



Processed Sun Nov 30 01:38:07 2014 by ELM ver.2012-10-06 from 001__elm20141129_065430__dat00.bin

