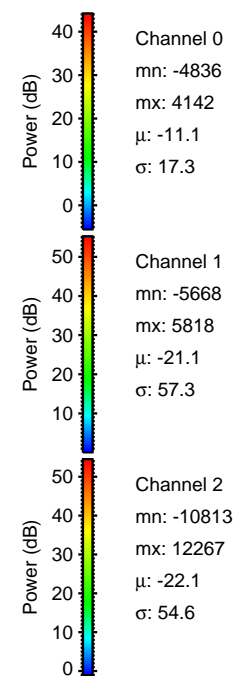
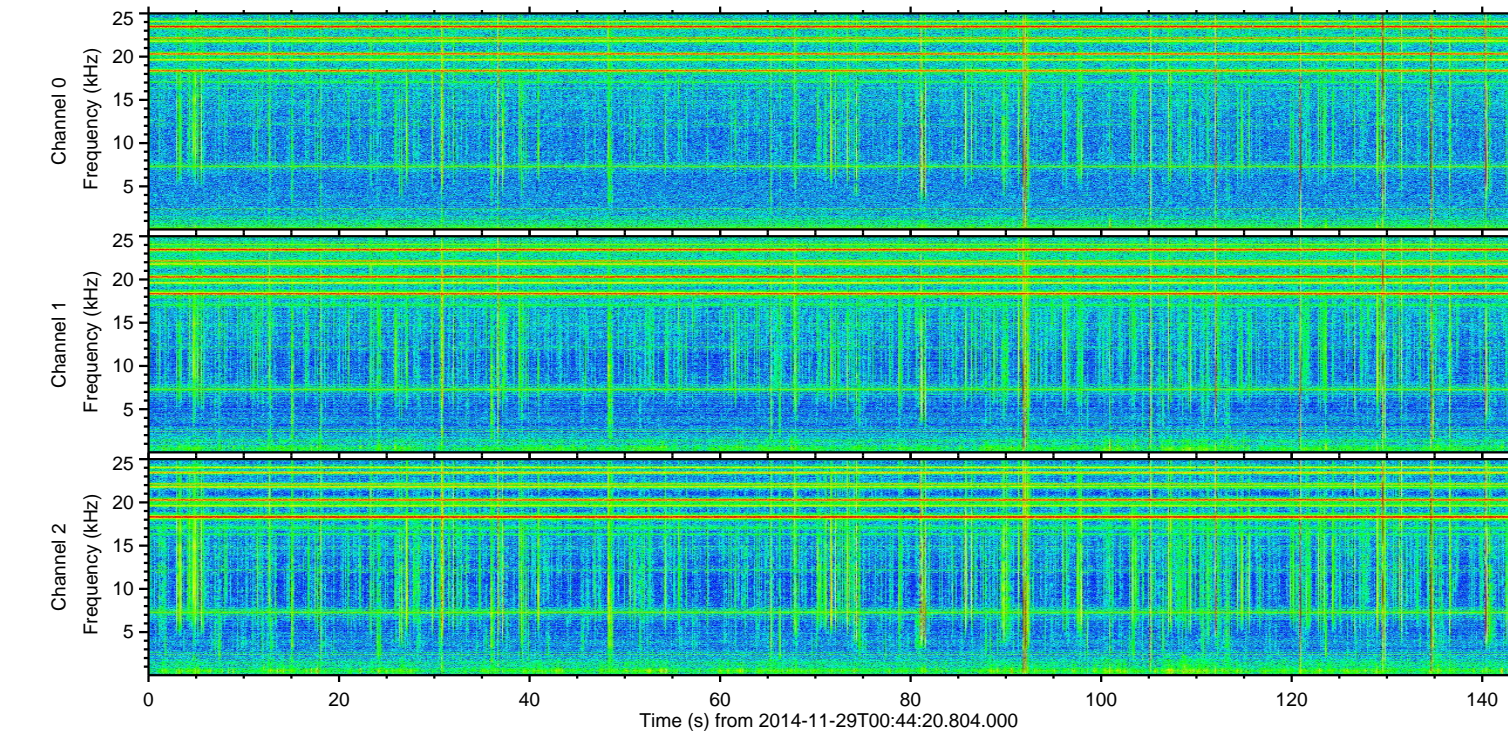
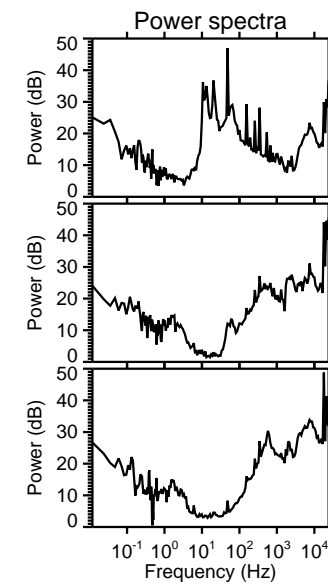
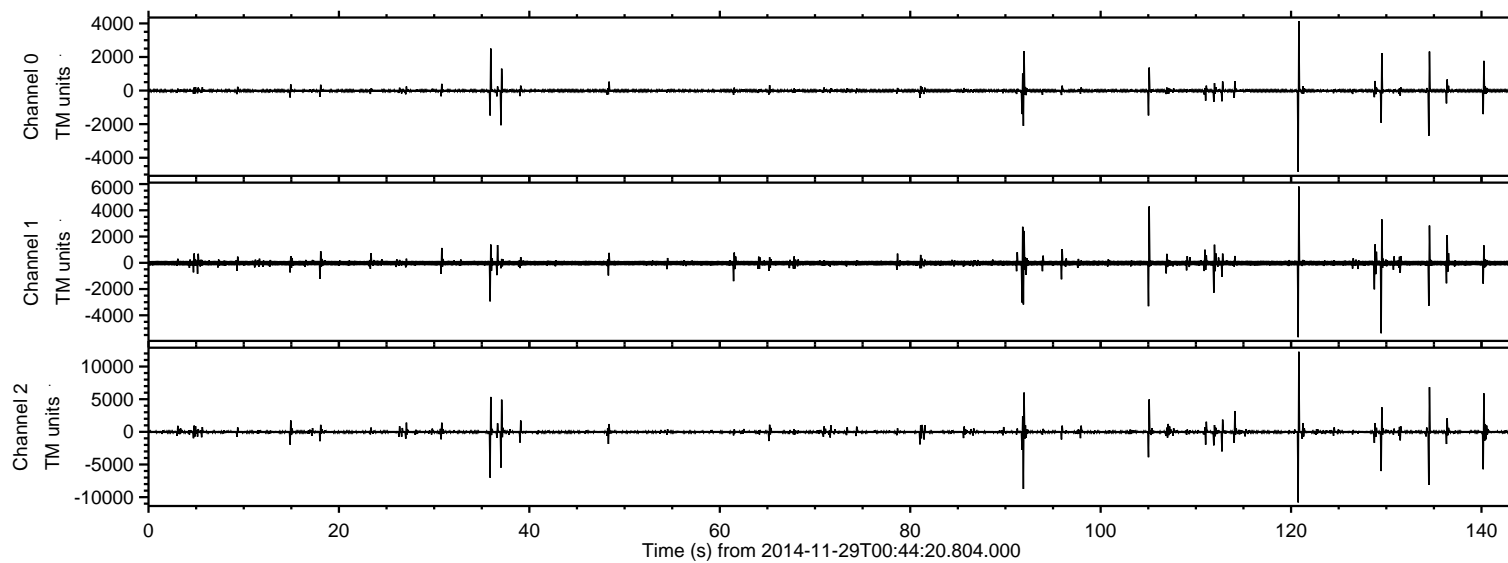


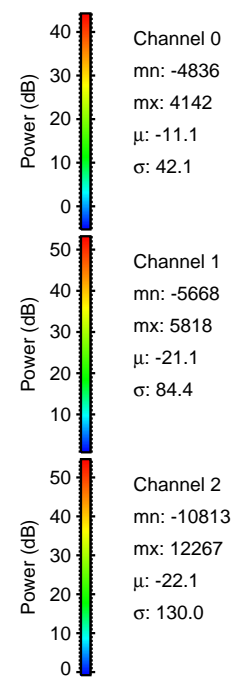
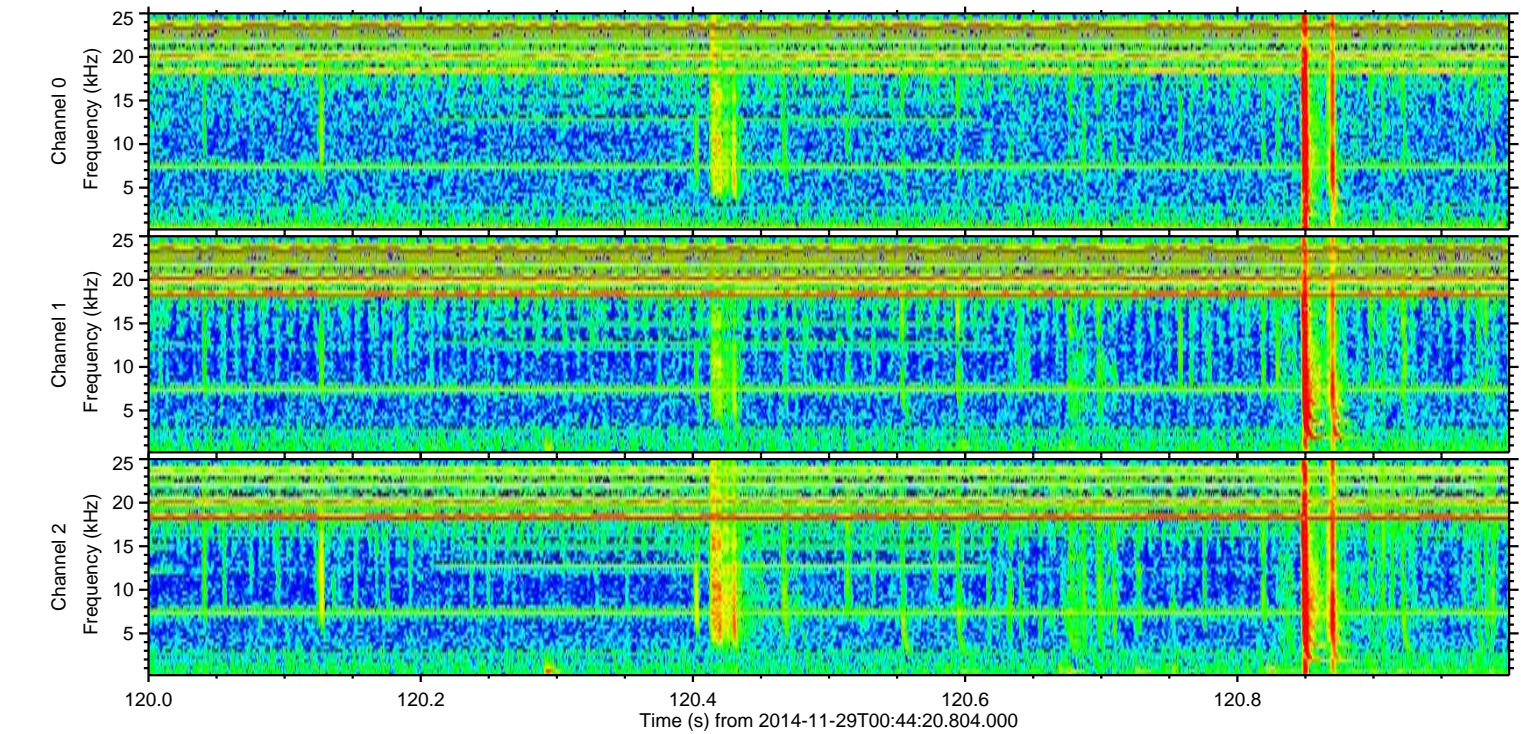
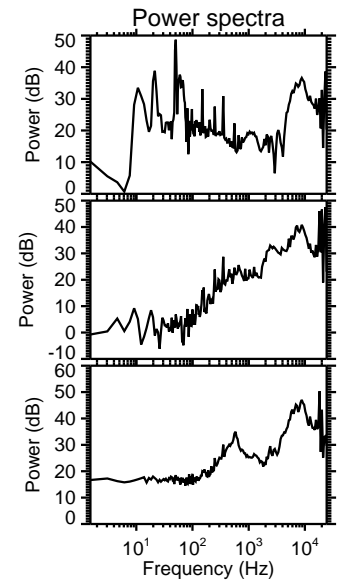
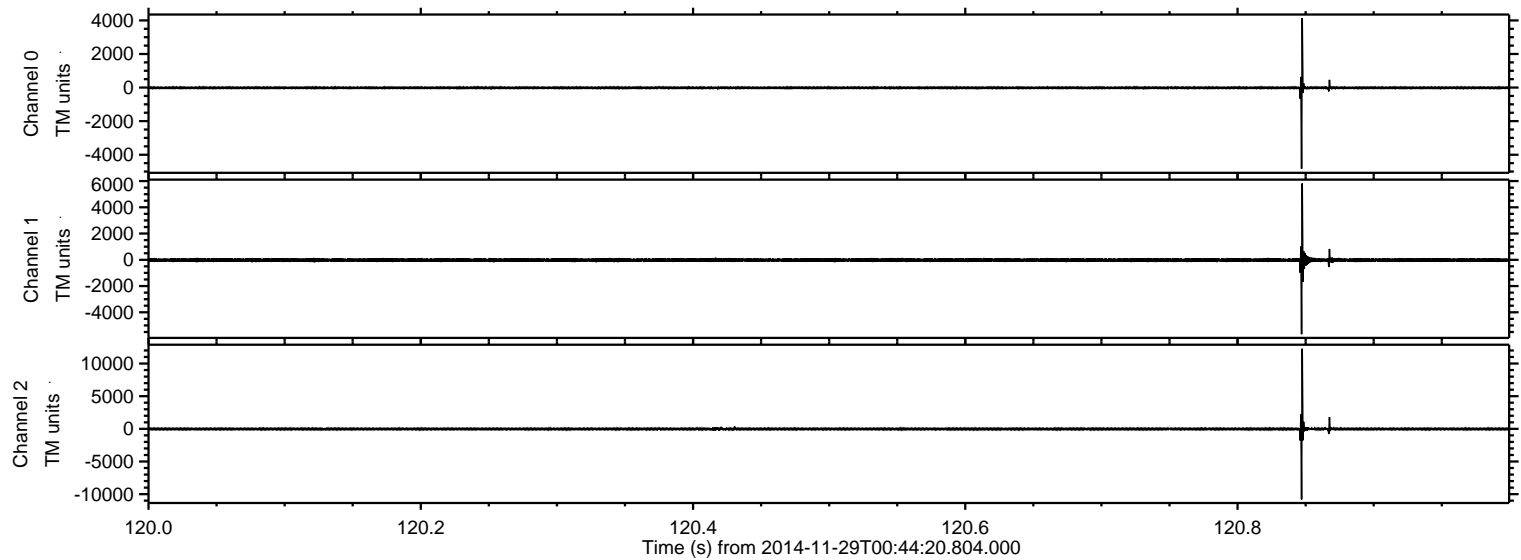
ELMAVAN 3D WAVEFORMS (Measured data sampled at 50 kHz) 49619 packets of 144 samples from 2014-11-29T00:44:20.804.000.

Processed Sat Nov 29 23:45:41 2014 by ELM ver.2012-10-06 from 001__elm20141129_004419__dat00.bin



ELMAVAN 3D WAVEFORMS (Measured data sampled at 50 kHz) 49619 packets of 144 samples from 2014-11-29T00:44:20.804.000. Part 121/143

Processed Sat Nov 29 23:45:56 2014 by ELM ver.2012-10-06 from 001__elm20141129_004419__dat00.bin

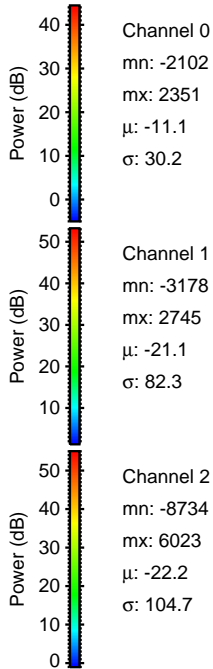
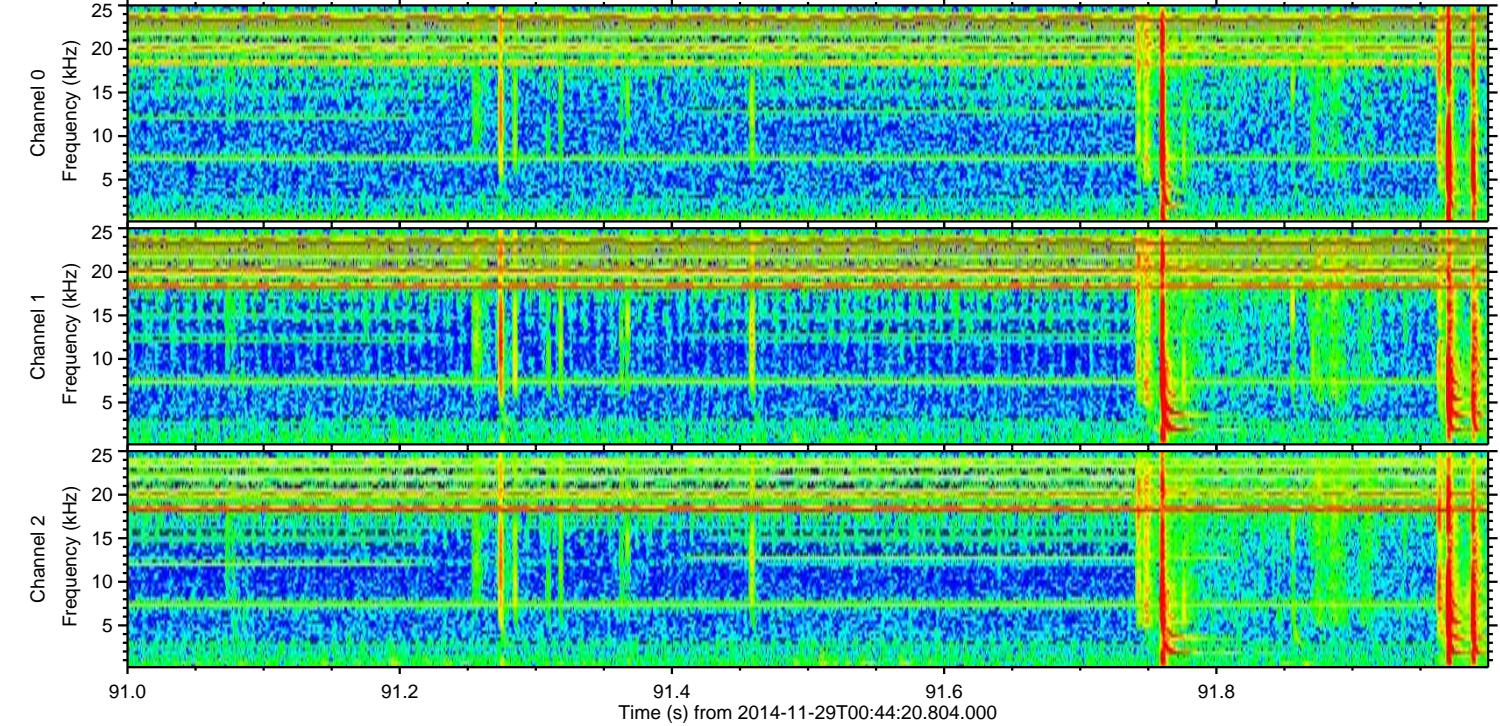
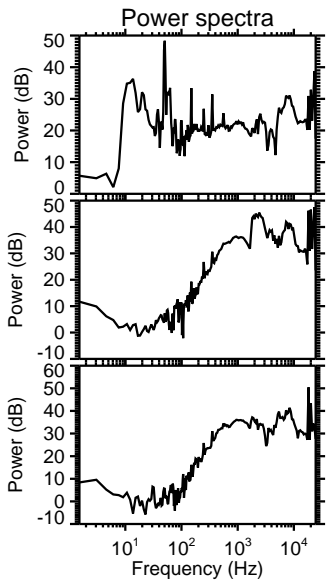
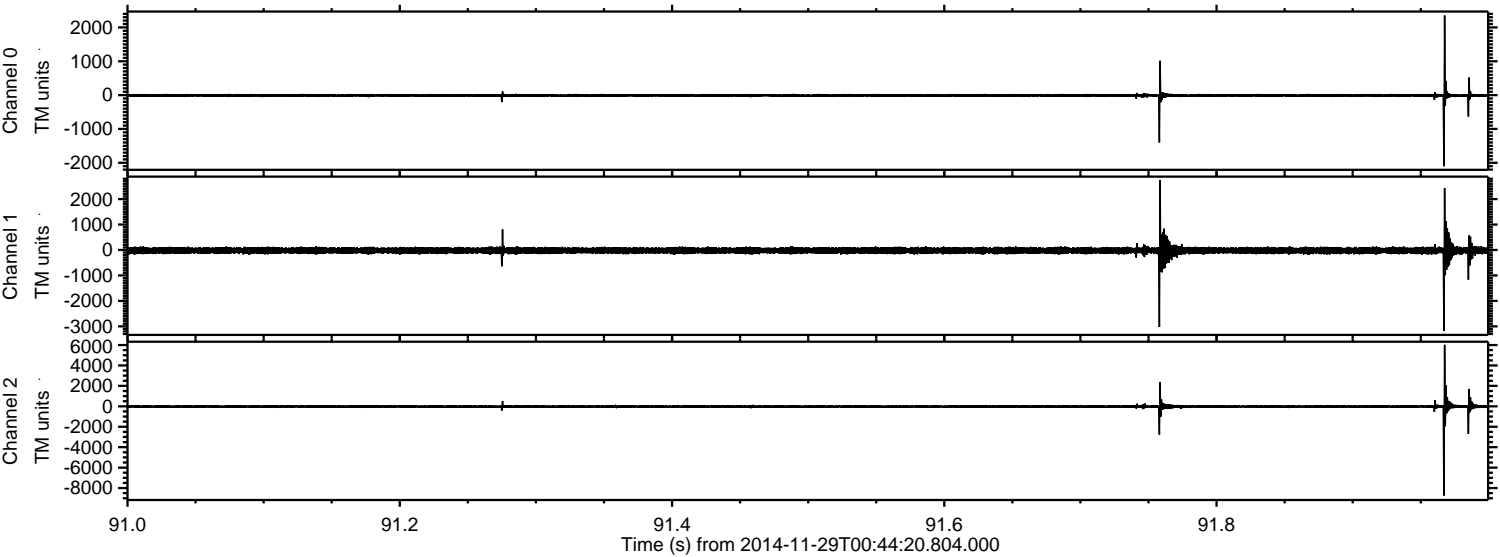


Channel 0
mn: -4836
mx: 4142
 μ : -11.1
 σ : 42.1

Channel 1
mn: -5668
mx: 5818
 μ : -21.1
 σ : 84.4

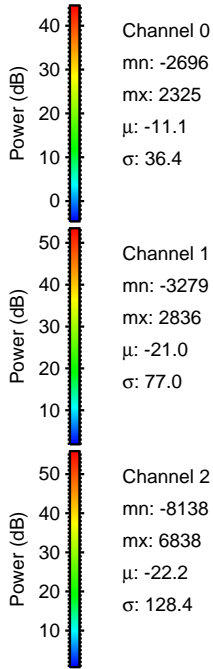
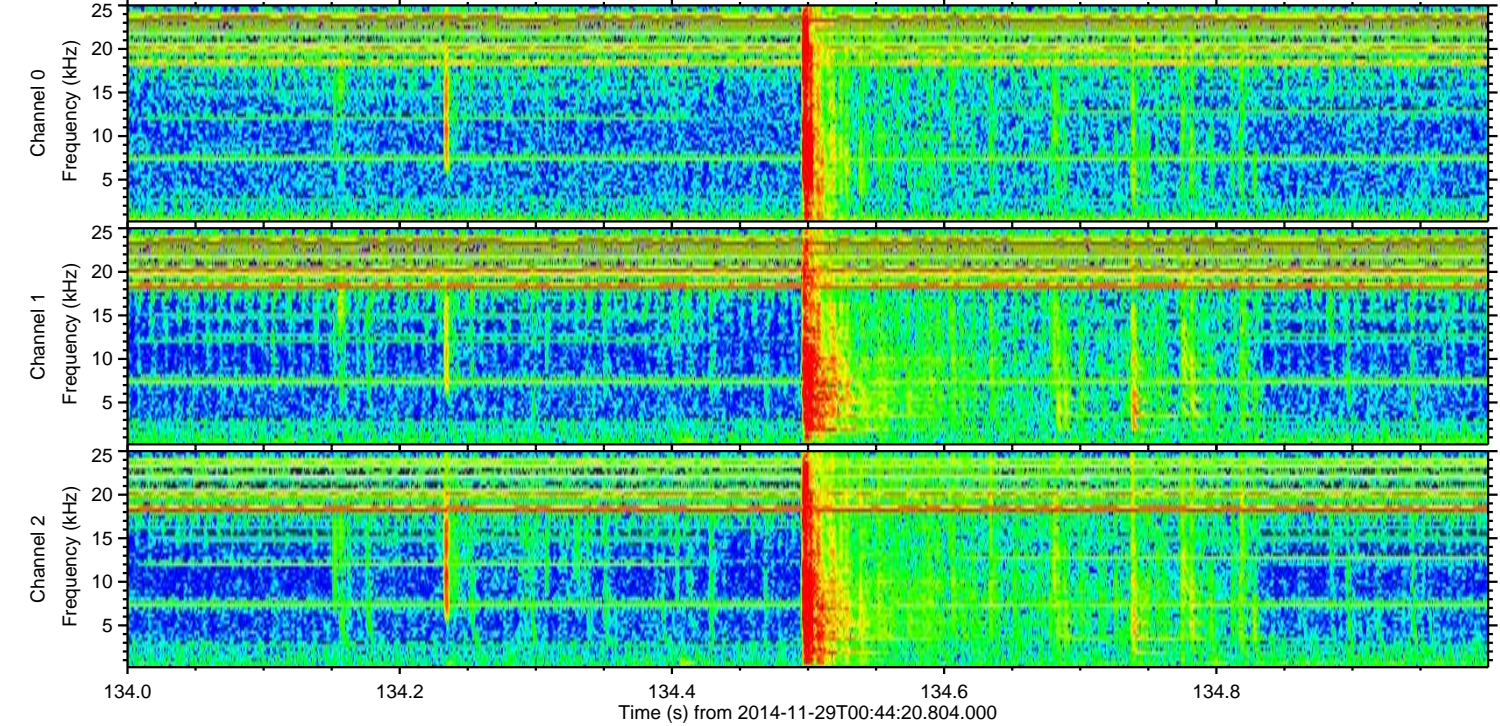
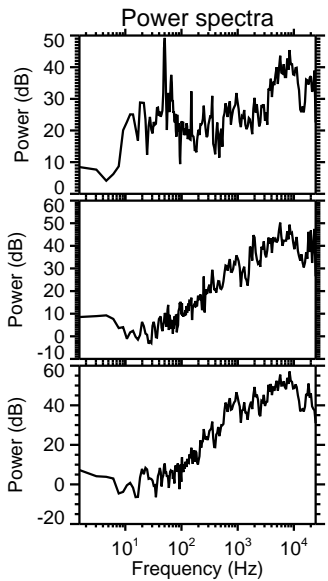
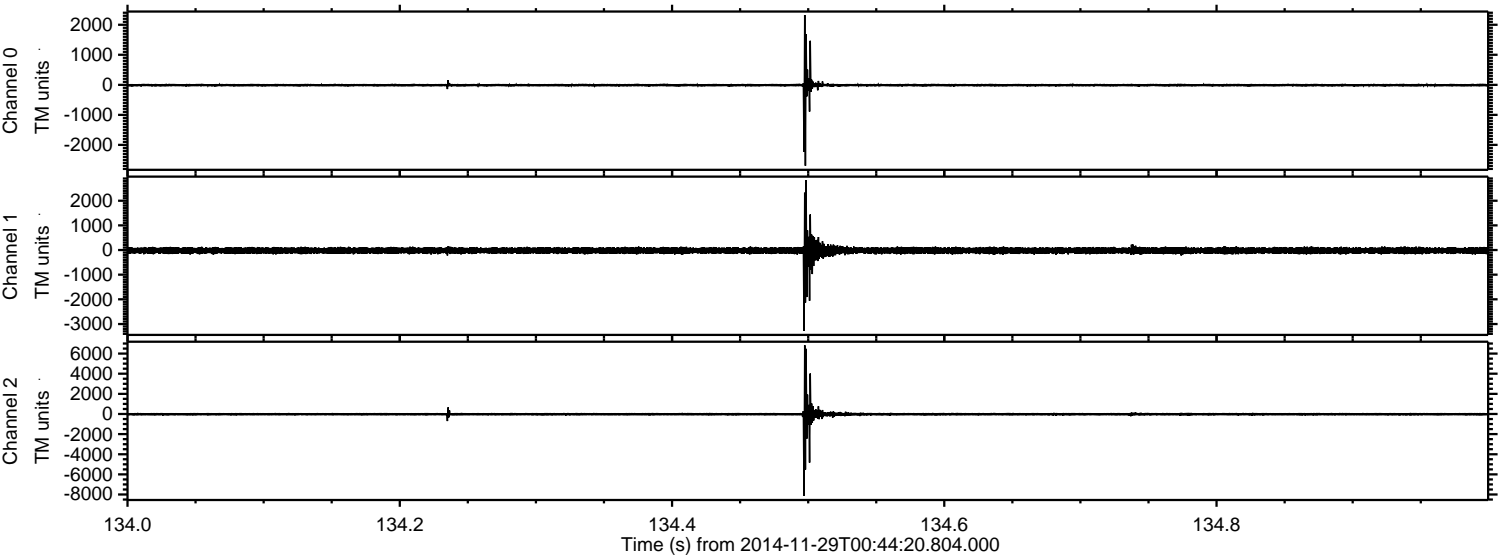
Channel 2
mn: -10813
mx: 12267
 μ : -22.1
 σ : 130.0

Processed Sat Nov 29 23:45:57 2014 by ELM ver.2012-10-06 from 001__elm20141129_004419__dat00.bin



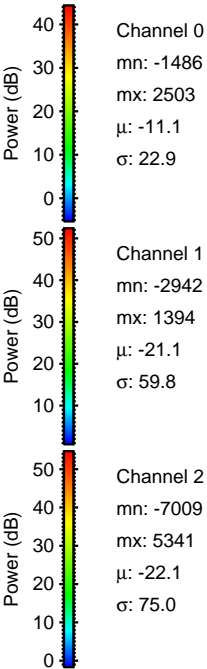
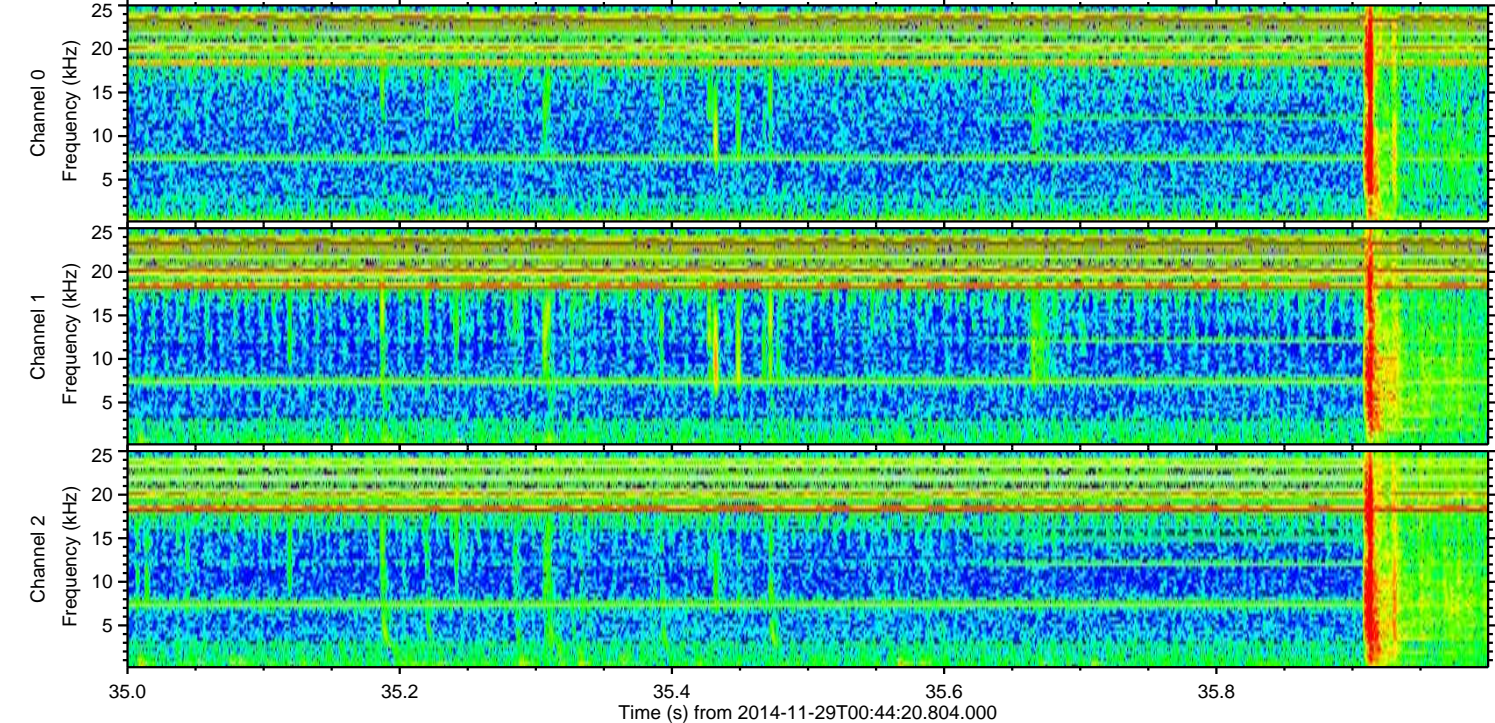
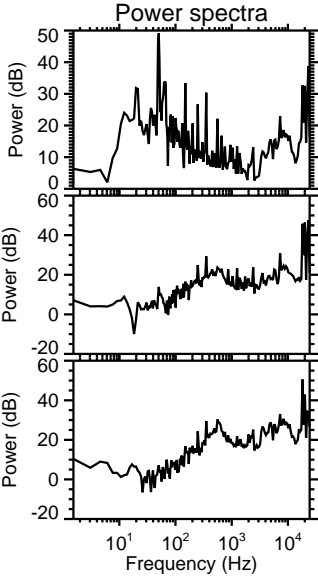
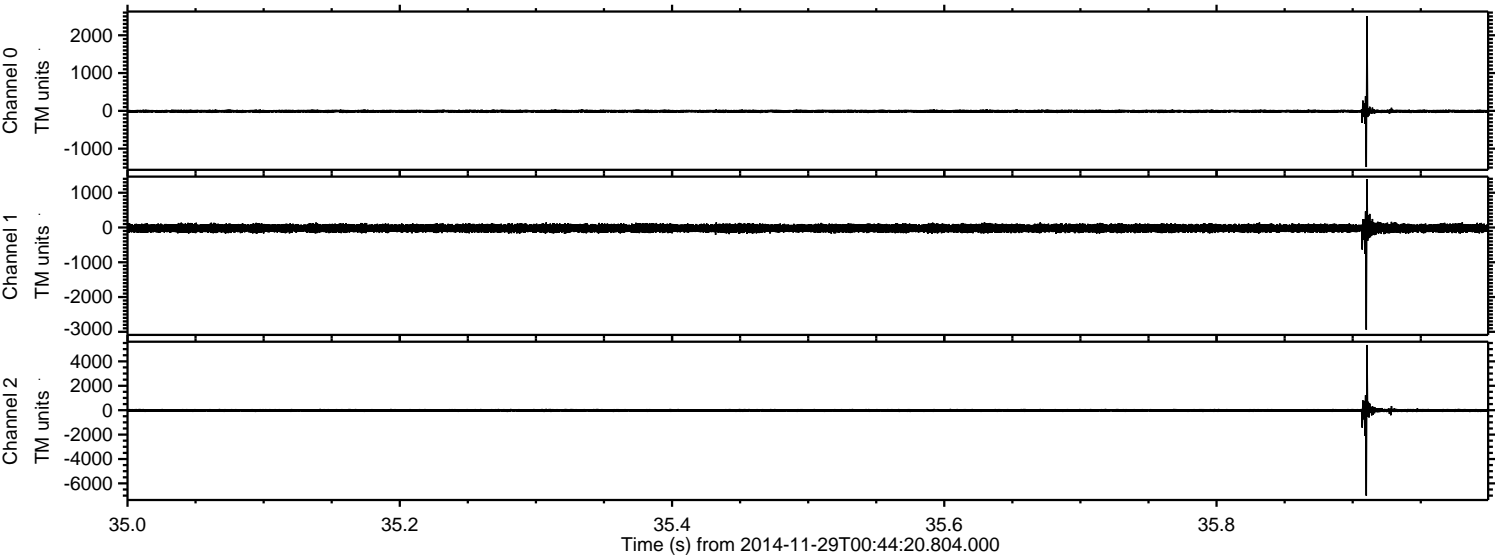
ELMAVAN 3D WAVEFORMS (Measured data sampled at 50 kHz) 49619 packets of 144 samples from 2014-11-29T00:44:20.804.000. Part 135/143

Processed Sat Nov 29 23:45:59 2014 by ELM ver.2012-10-06 from 001__elm20141129_004419__dat00.bin



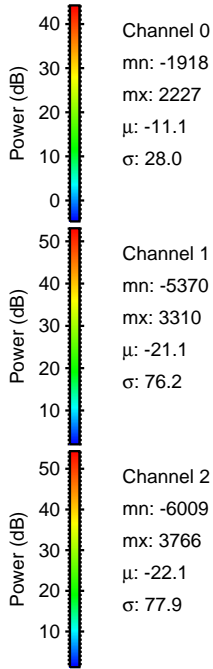
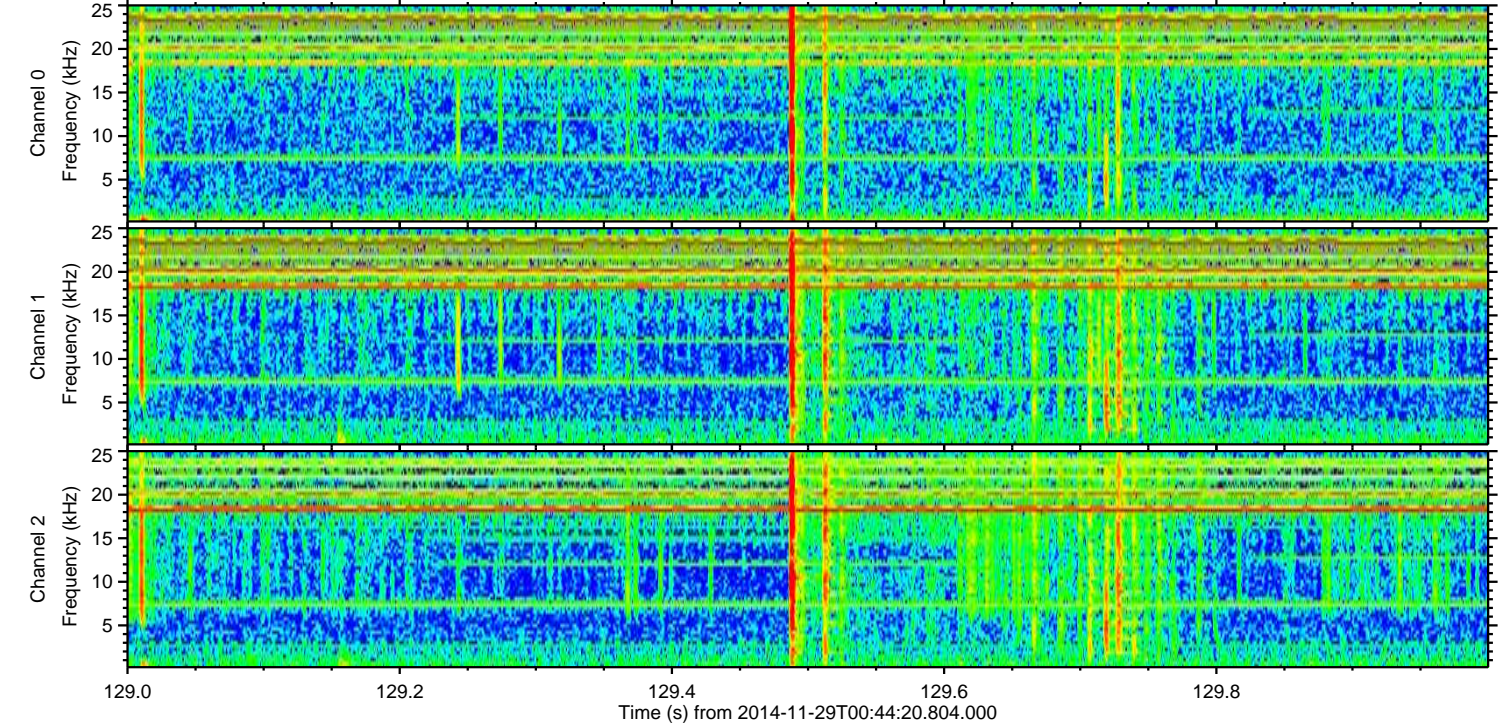
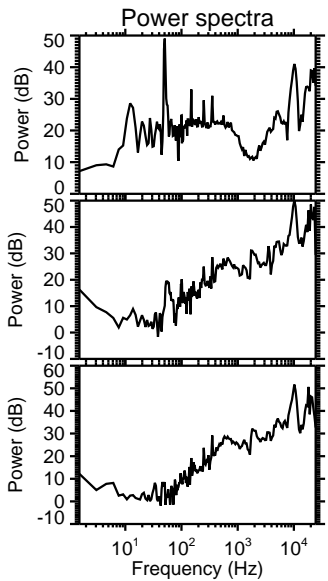
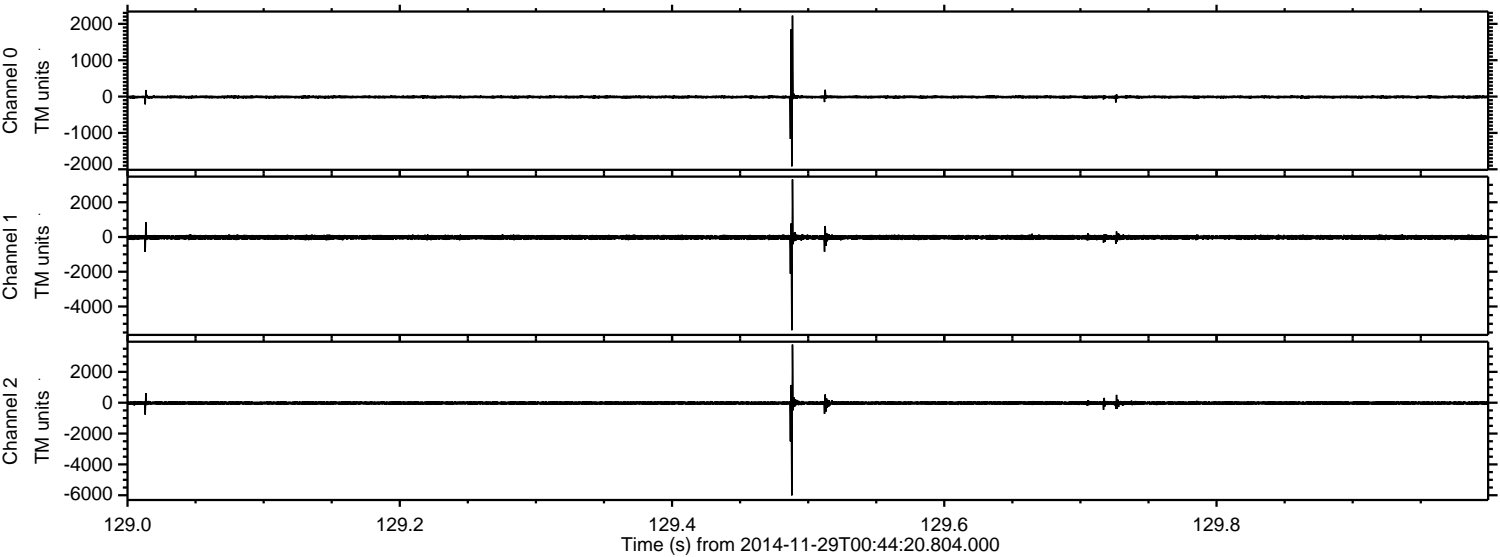
ELMAVAN 3D WAVEFORMS (Measured data sampled at 50 kHz) 49619 packets of 144 samples from 2014-11-29T00:44:20.804.000. Part 36/143

Processed Sat Nov 29 23:46:00 2014 by ELM ver.2012-10-06 from 001__elm20141129_004419__dat00.bin



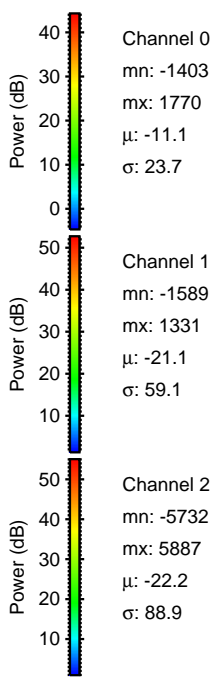
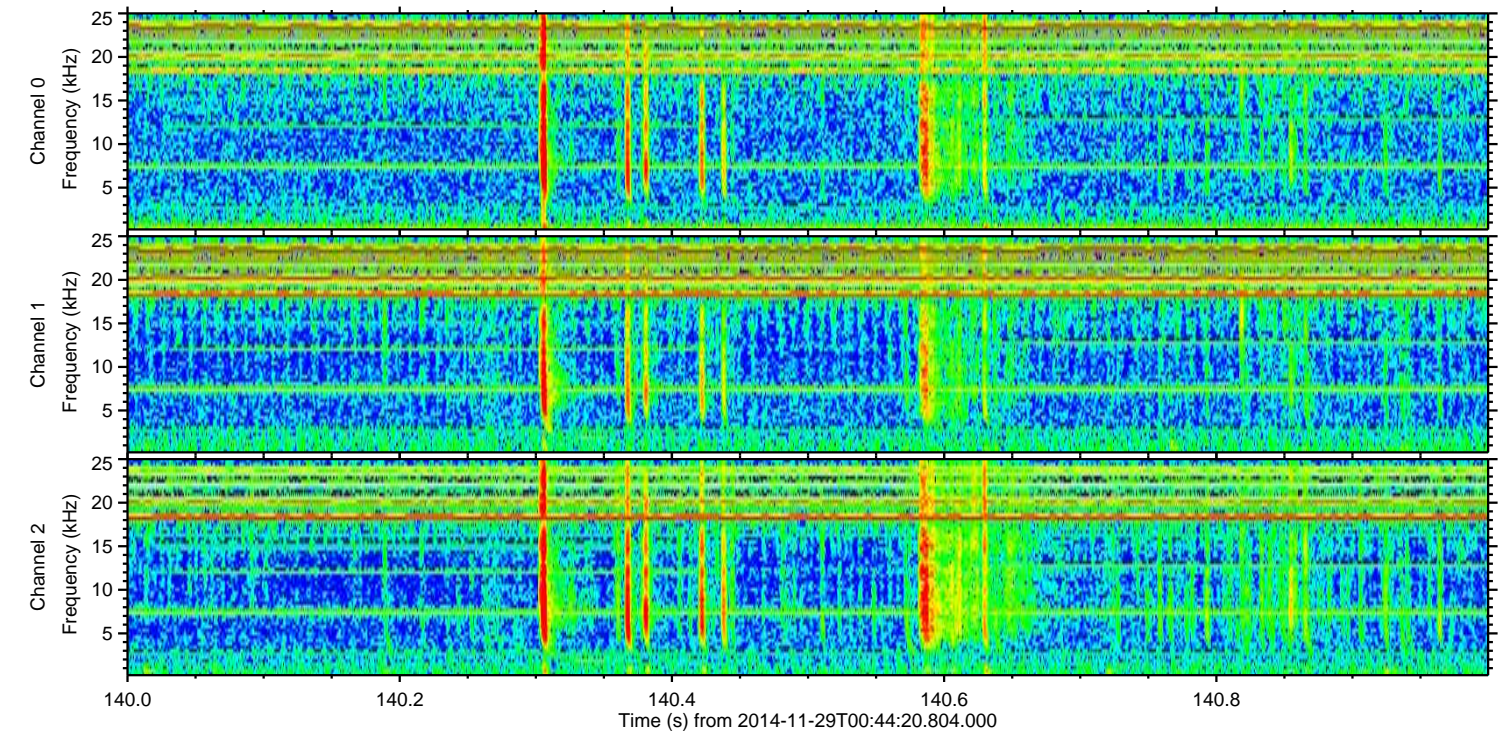
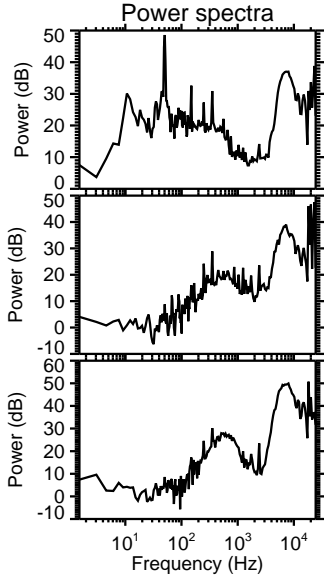
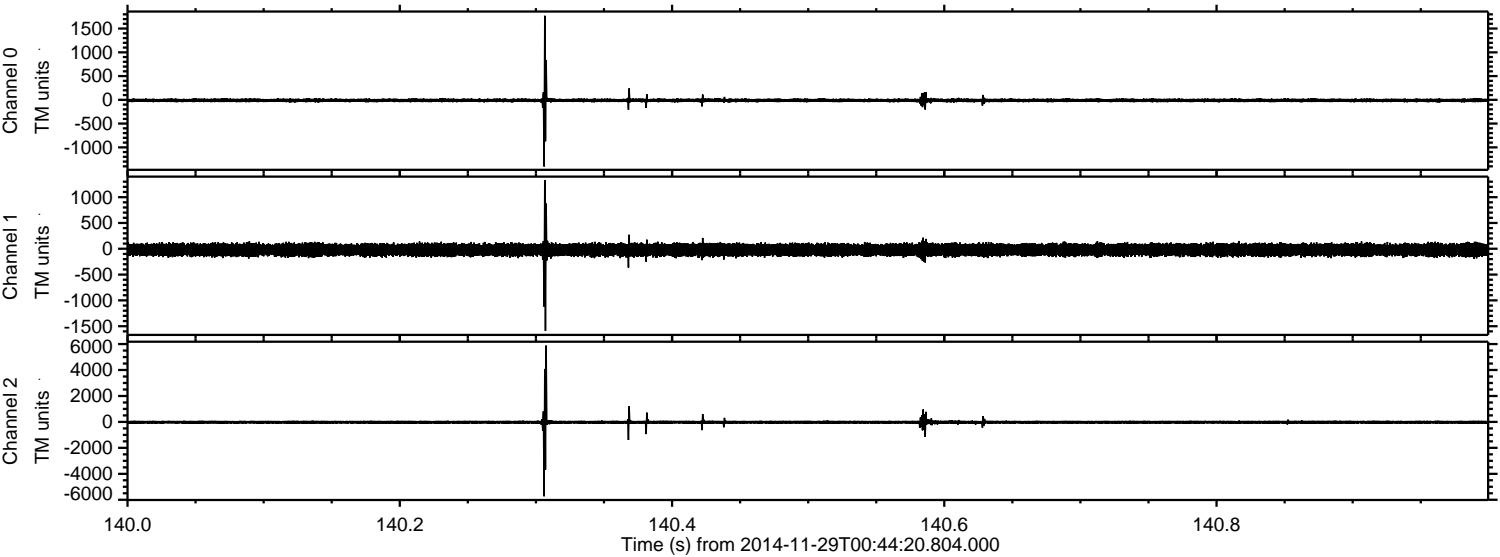
ELMAVAN 3D WAVEFORMS (Measured data sampled at 50 kHz) 49619 packets of 144 samples from 2014-11-29T00:44:20.804.000. Part 130/143

Processed Sat Nov 29 23:46:01 2014 by ELM ver.2012-10-06 from 001__elm20141129_004419__dat00.bin



ELMAVAN 3D WAVEFORMS (Measured data sampled at 50 kHz) 49619 packets of 144 samples from 2014-11-29T00:44:20.804.000. Part 141/143

Processed Sat Nov 29 23:46:02 2014 by ELM ver.2012-10-06 from 001__elm20141129_004419__dat00.bin



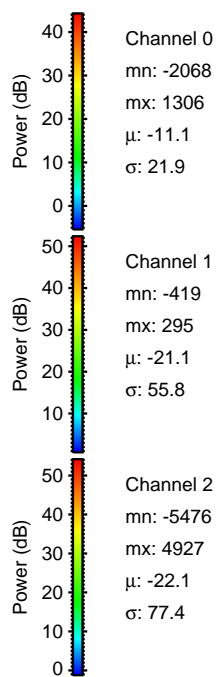
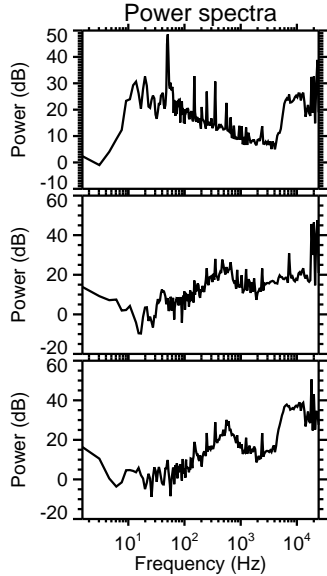
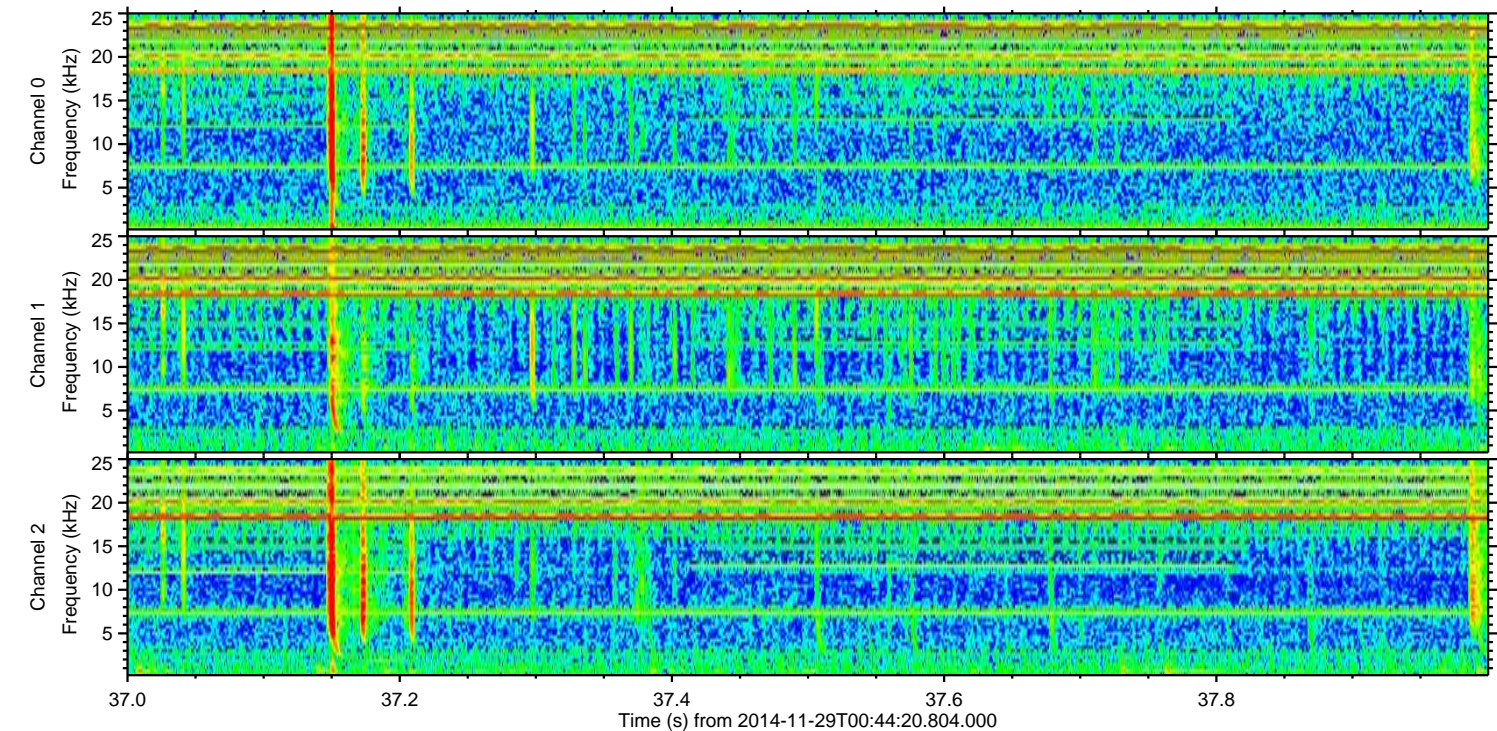
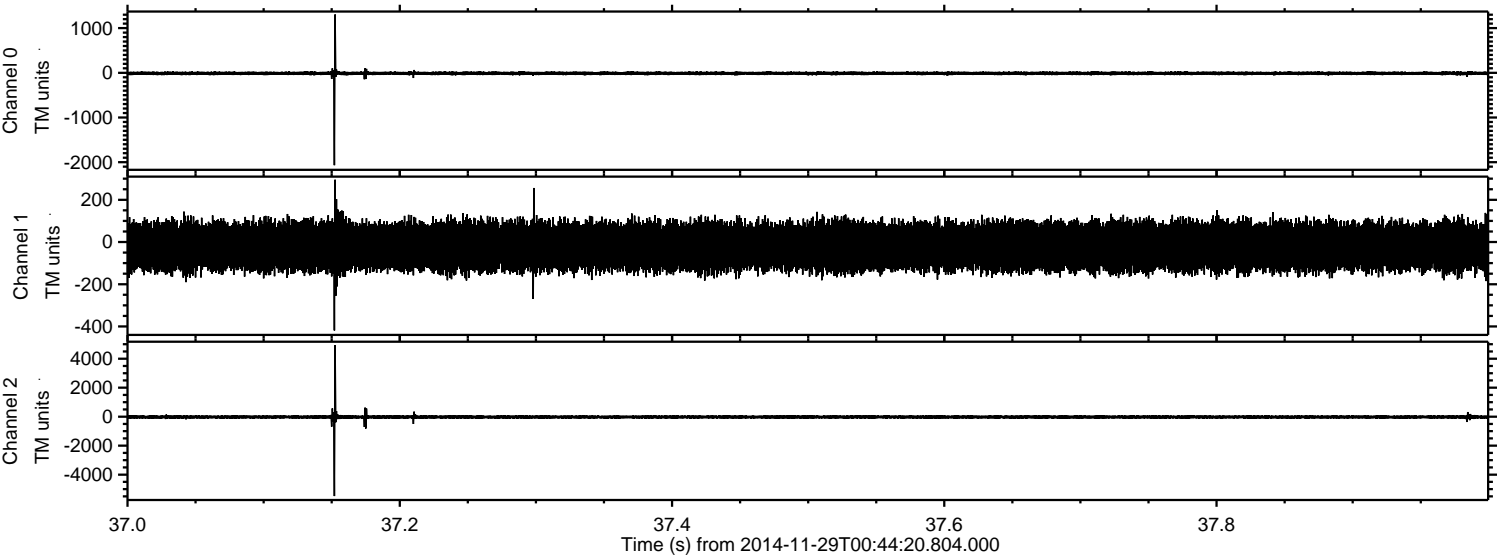
Channel 0
mn: -1403
mx: 1770
 μ : -11.1
 σ : 23.7

Channel 1
mn: -1589
mx: 1331
 μ : -21.1
 σ : 59.1

Channel 2
mn: -5732
mx: 5887
 μ : -22.2
 σ : 88.9

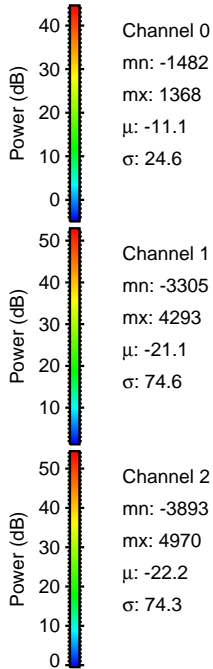
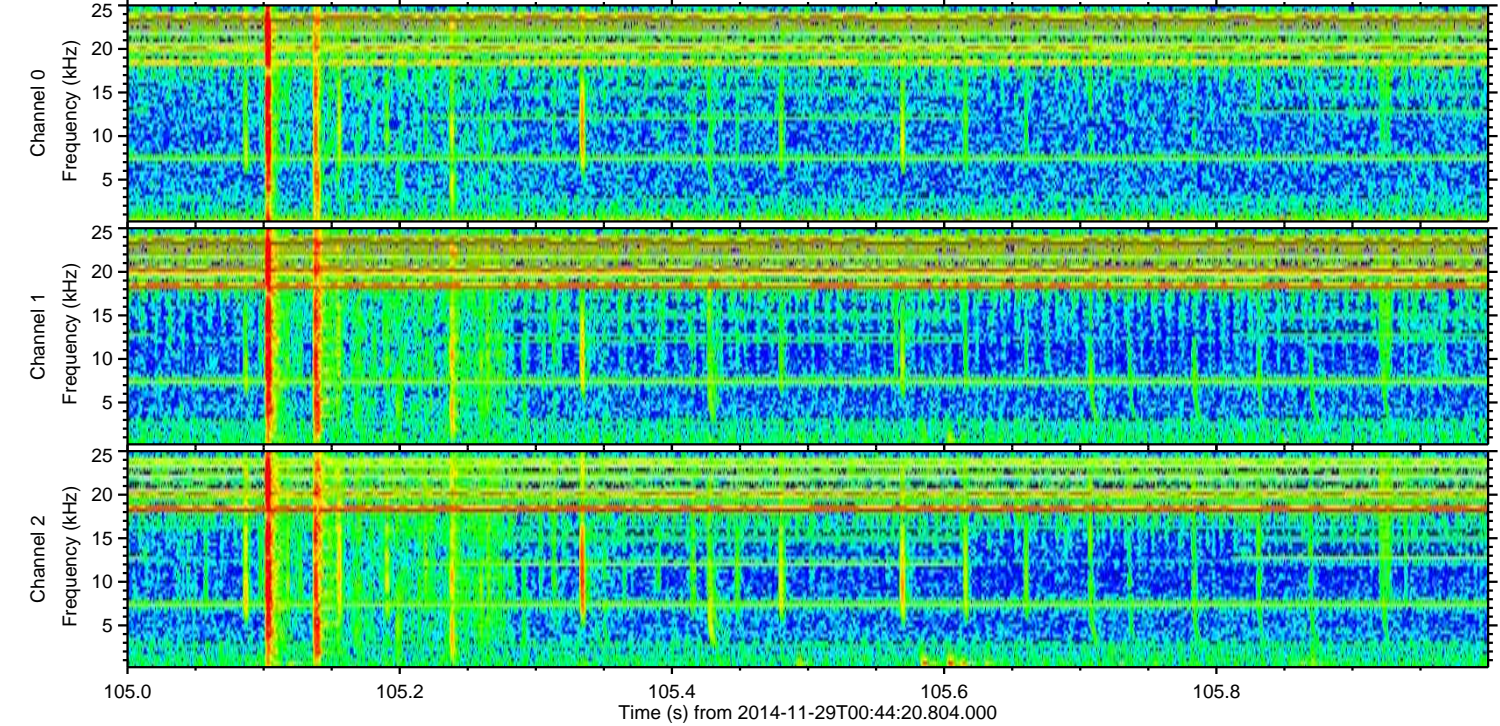
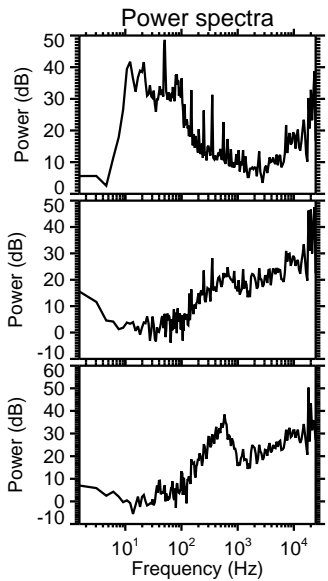
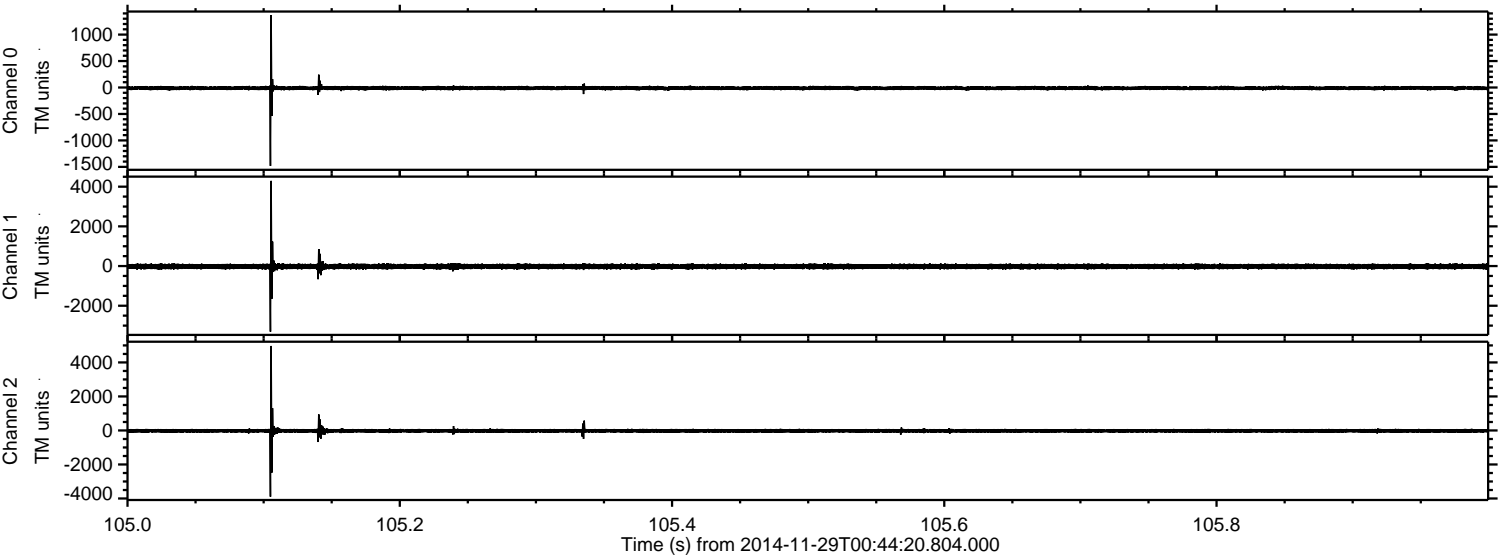
ELMAVAN 3D WAVEFORMS (Measured data sampled at 50 kHz) 49619 packets of 144 samples from 2014-11-29T00:44:20.804.000. Part 38/143

Processed Sat Nov 29 23:46:03 2014 by ELM ver.2012-10-06 from 001__elm20141129_004419__dat00.bin



ELMAVAN 3D WAVEFORMS (Measured data sampled at 50 kHz) 49619 packets of 144 samples from 2014-11-29T00:44:20.804.000. Part 106/143

Processed Sat Nov 29 23:46:05 2014 by ELM ver.2012-10-06 from 001__elm20141129_004419__dat00.bin



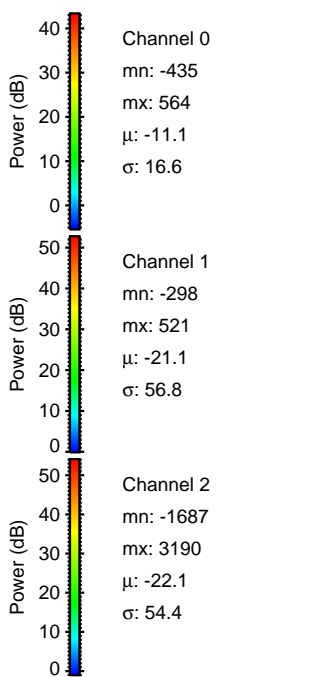
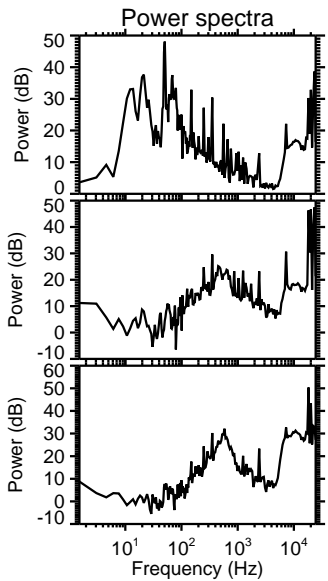
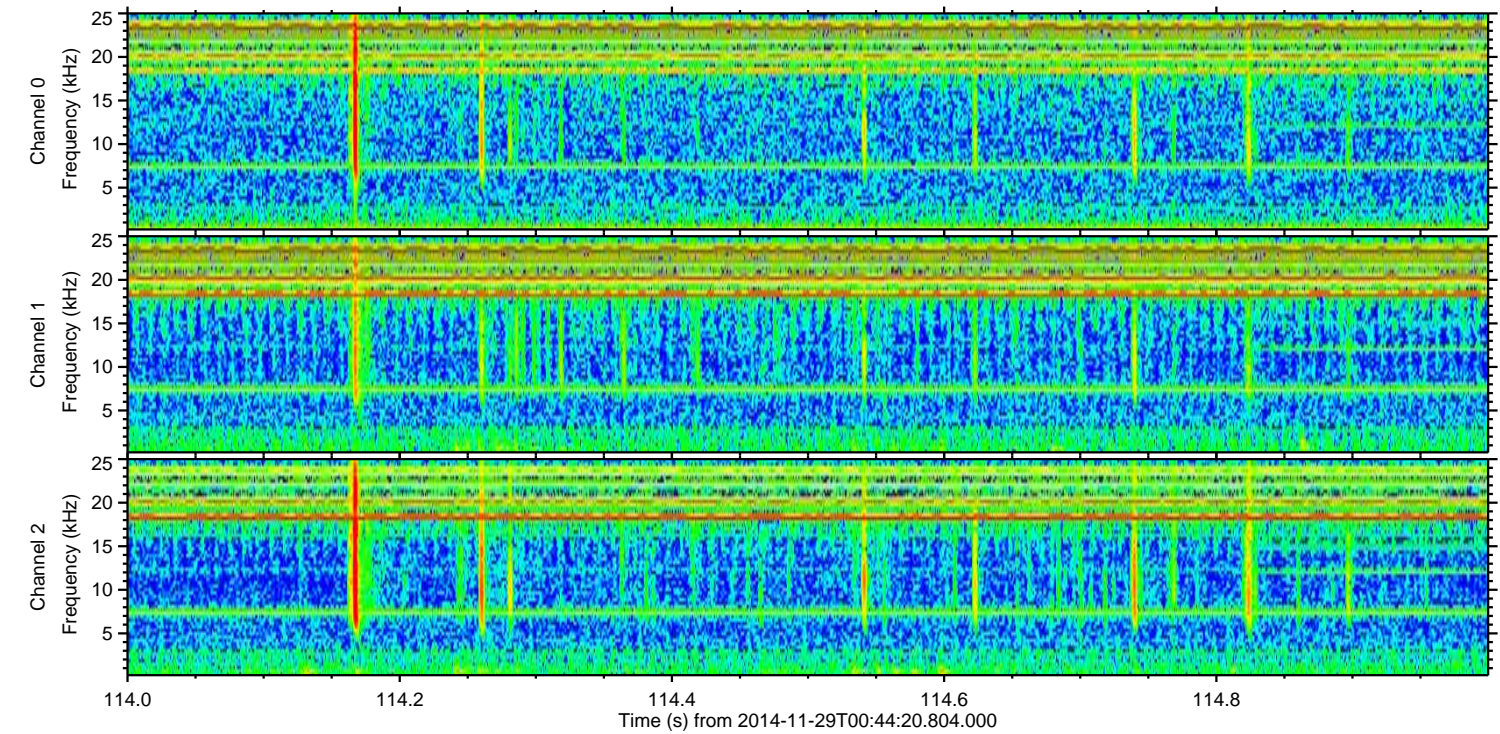
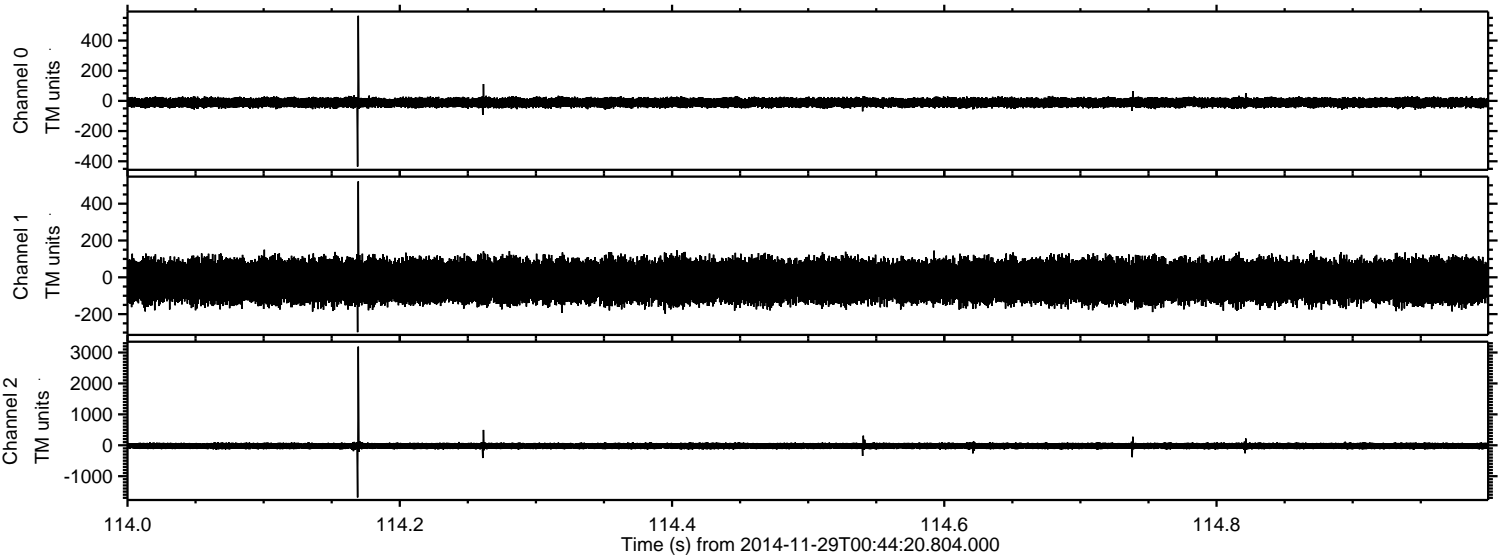
Channel 0
mn: -1482
mx: 1368
 μ : -11.1
 σ : 24.6

Channel 1
mn: -3305
mx: 4293
 μ : -21.1
 σ : 74.6

Channel 2
mn: -3893
mx: 4970
 μ : -22.2
 σ : 74.3

ELMAVAN 3D WAVEFORMS (Measured data sampled at 50 kHz) 49619 packets of 144 samples from 2014-11-29T00:44:20.804.000. Part 115/143

Processed Sat Nov 29 23:46:06 2014 by ELM ver.2012-10-06 from 001__elm20141129_004419__dat00.bin



ELMAVAN 3D WAVEFORMS (Measured data sampled at 50 kHz) 49619 packets of 144 samples from 2014-11-29T00:44:20.804.000. Part 26/143

Processed Sat Nov 29 23:46:07 2014 by ELM ver.2012-10-06 from 001__elm20141129_004419__dat00.bin

