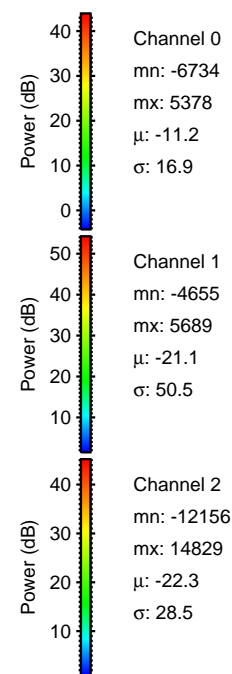
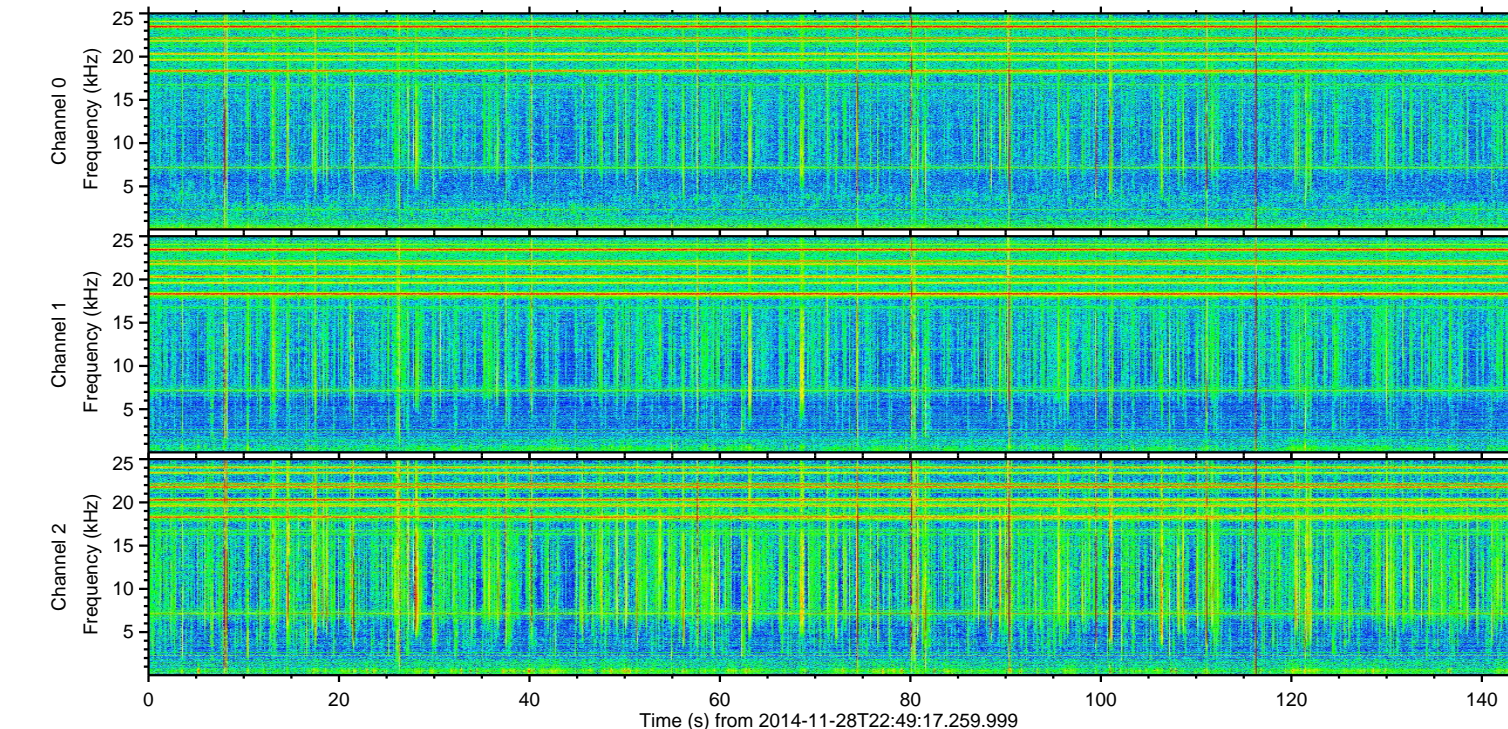
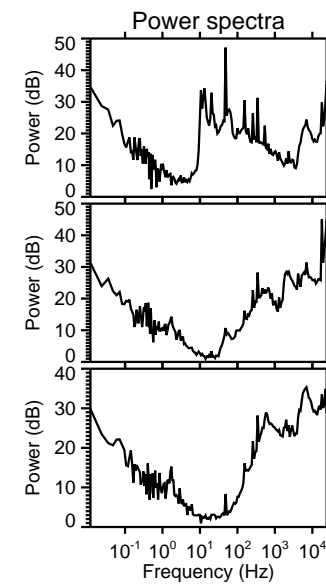
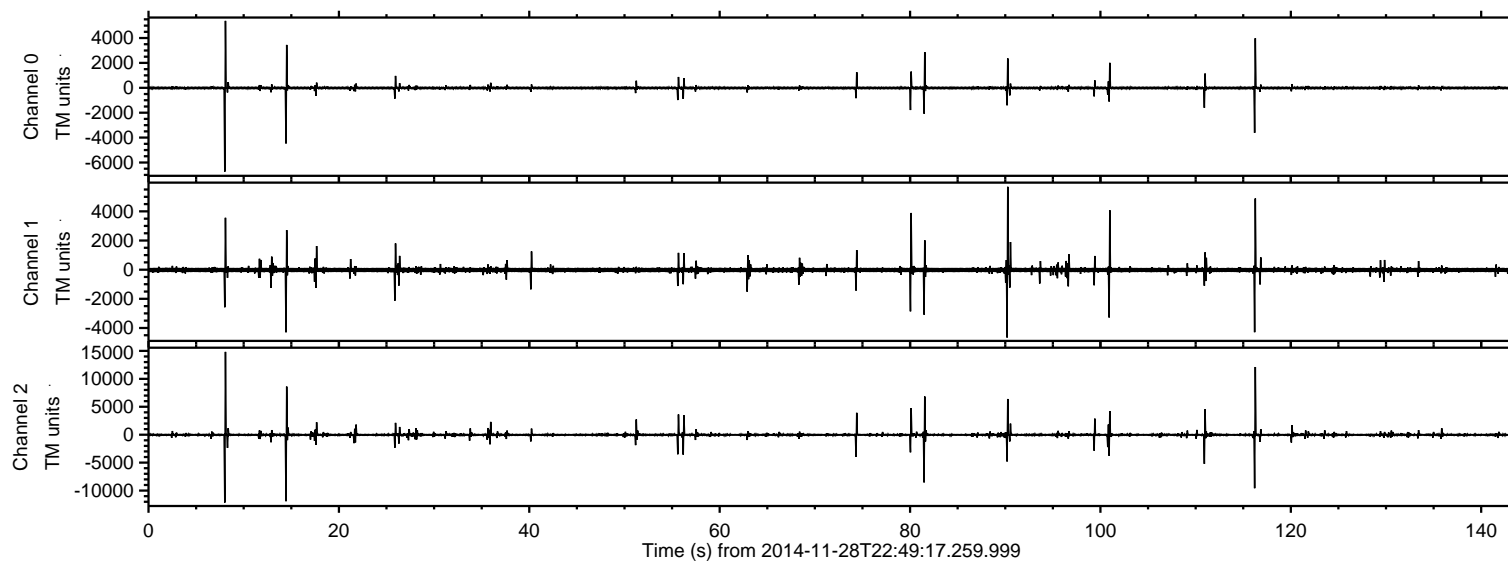


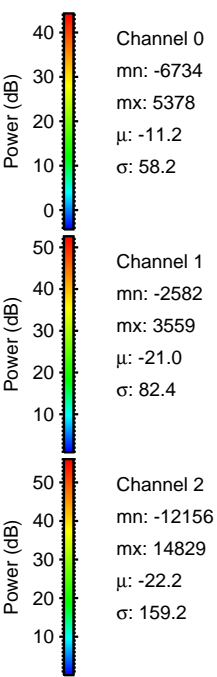
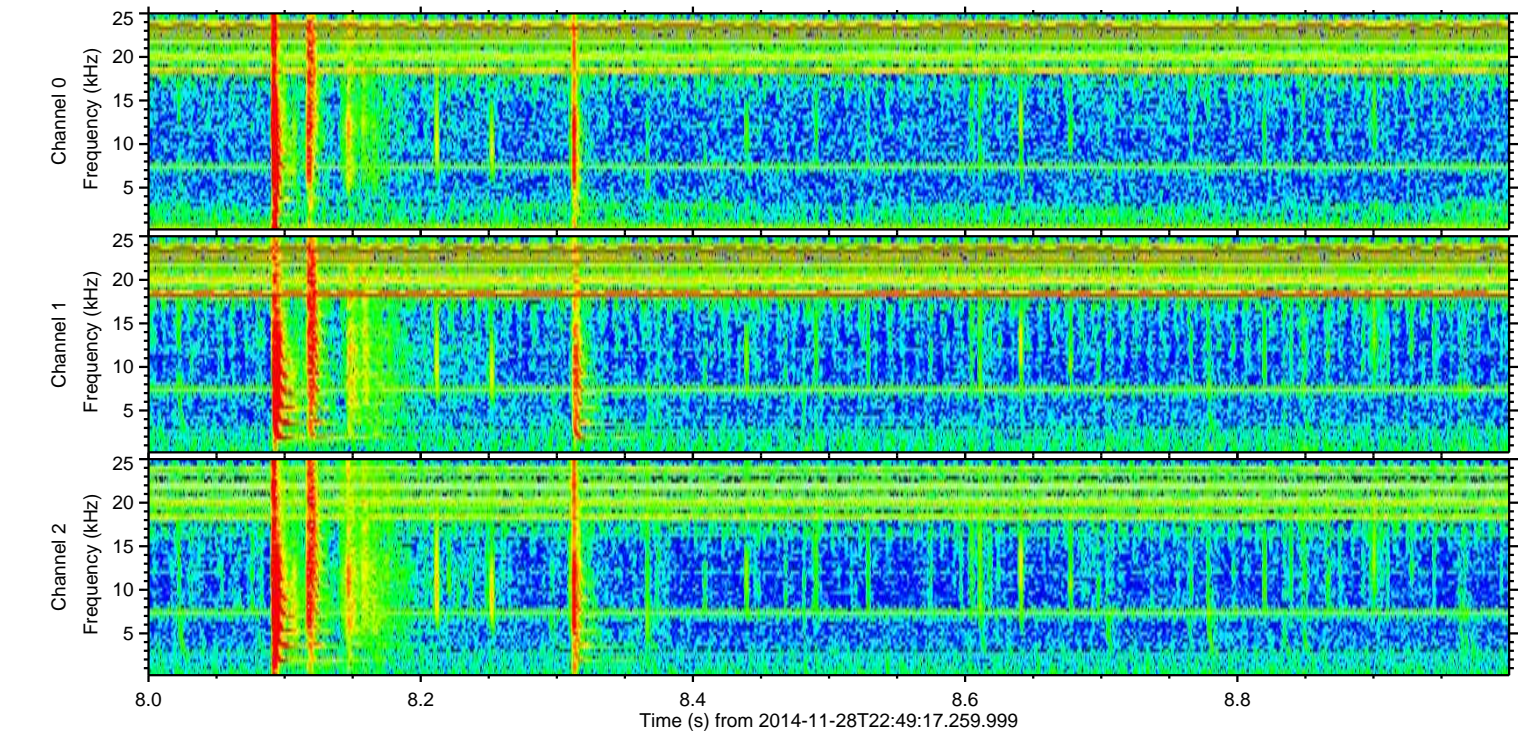
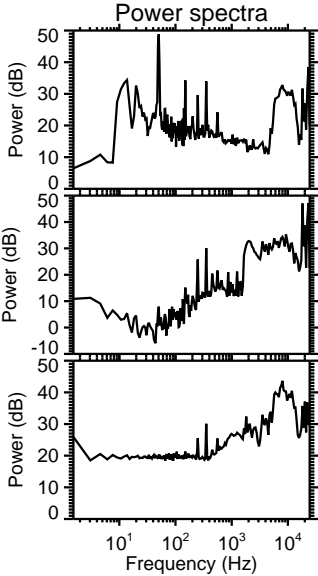
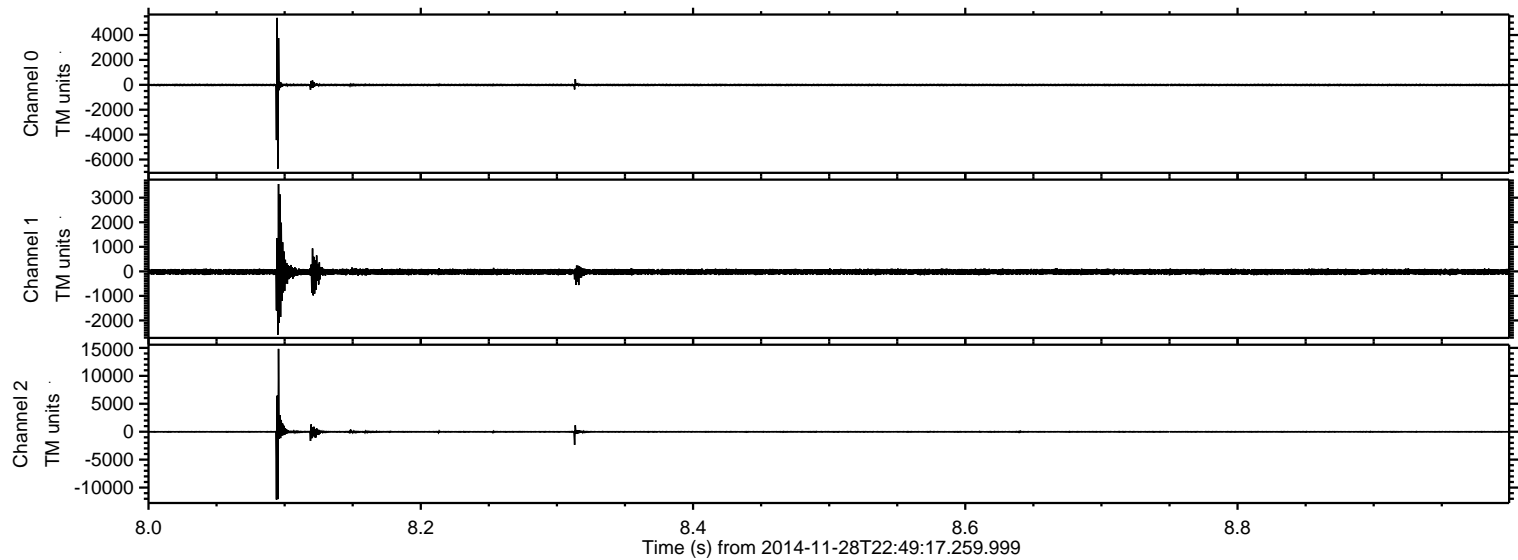
# ELMAVAN 3D WAVEFORMS (Measured data sampled at 50 kHz) 49630 packets of 144 samples from 2014-11-28T22:49:17.259.999.

Processed Sat Nov 29 20:57:56 2014 by ELM ver.2012-10-06 from 001\_\_elm20141128\_224916\_\_dat00.bin





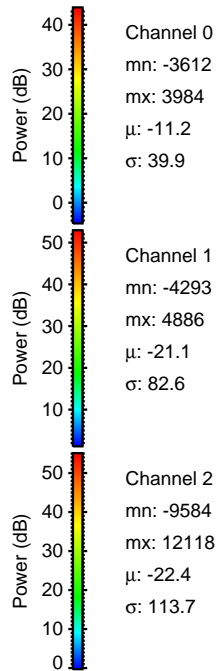
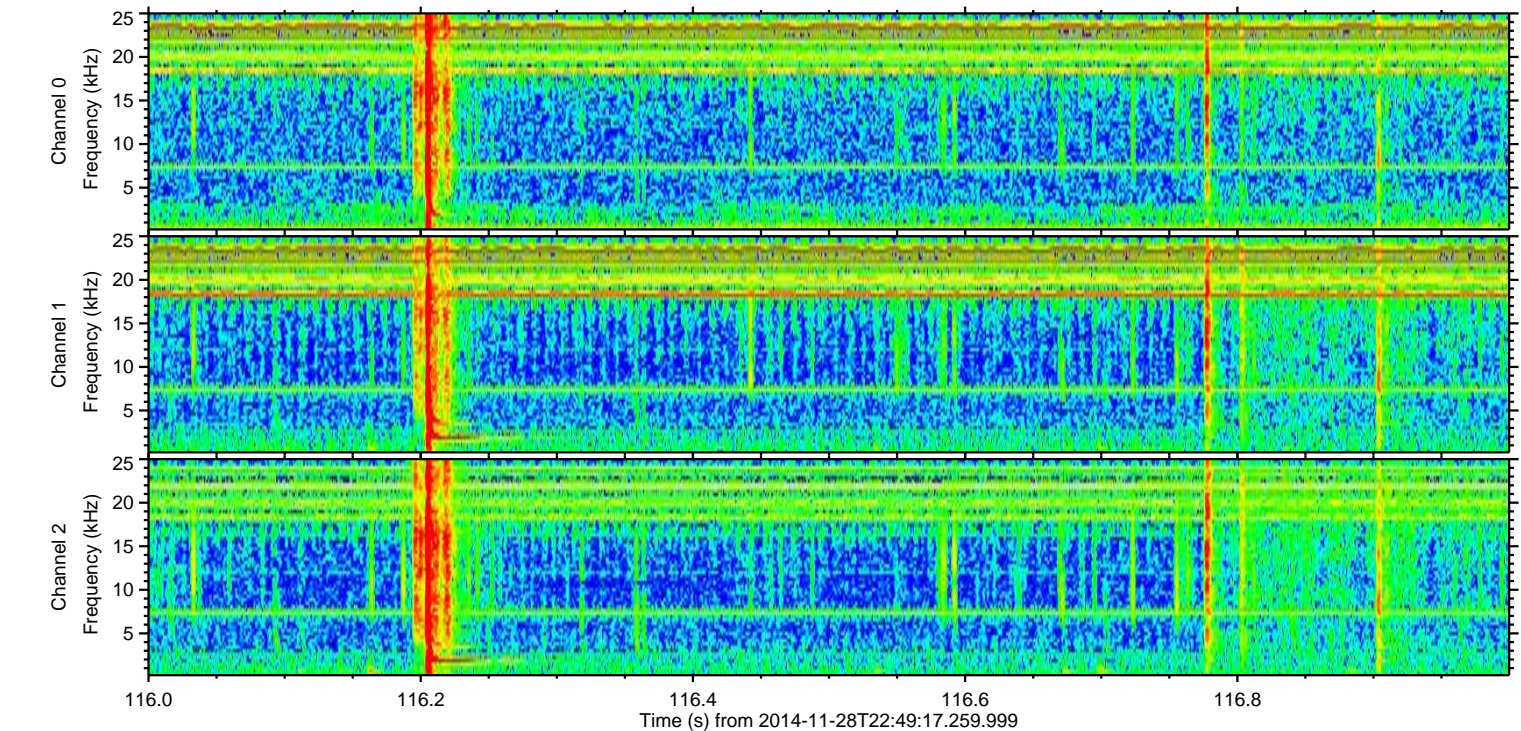
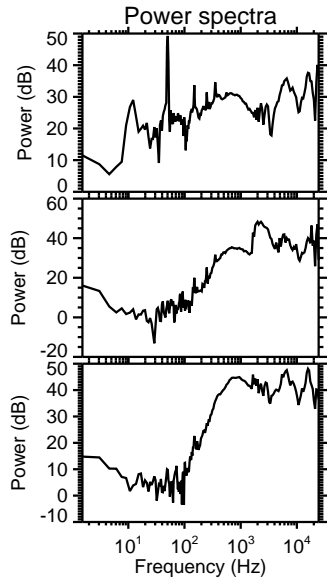
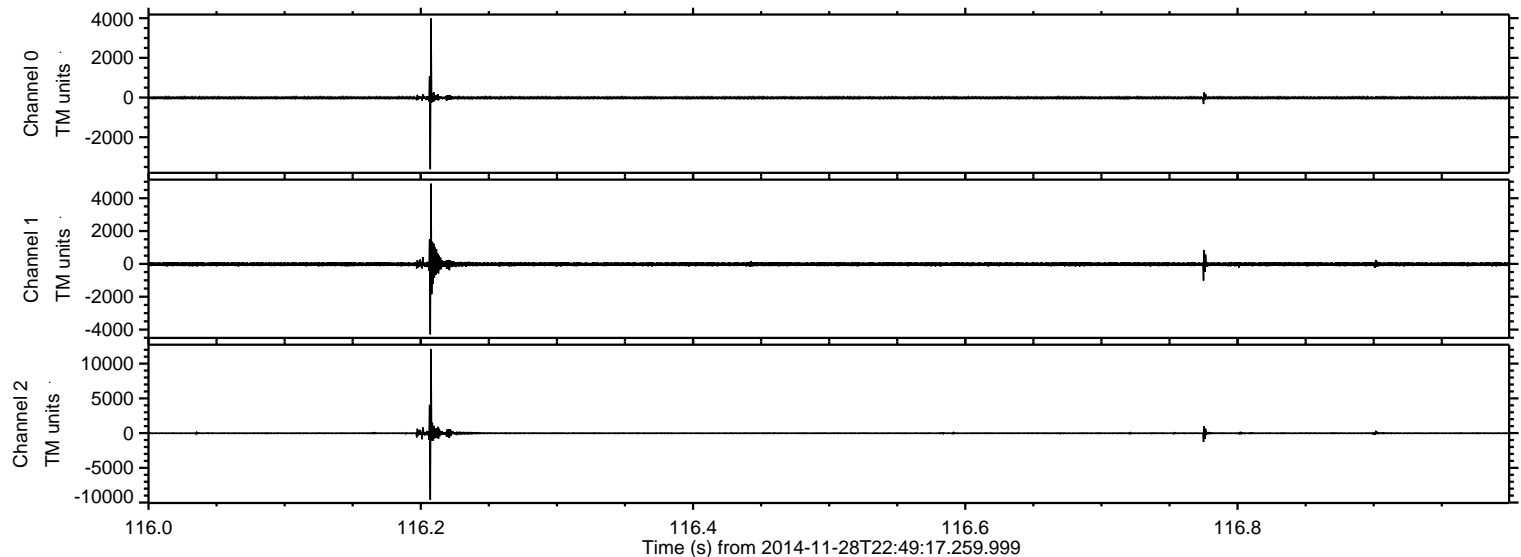
Processed Sat Nov 29 20:58:10 2014 by ELM ver.2012-10-06 from 001\_\_elm20141128\_224916\_\_dat00.bin





ELMAVAN 3D WAVEFORMS (Measured data sampled at 50 kHz) 49630 packets of 144 samples from 2014-11-28T22:49:17.259.999. Part 117/143

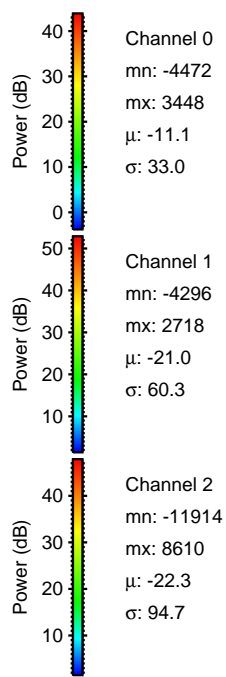
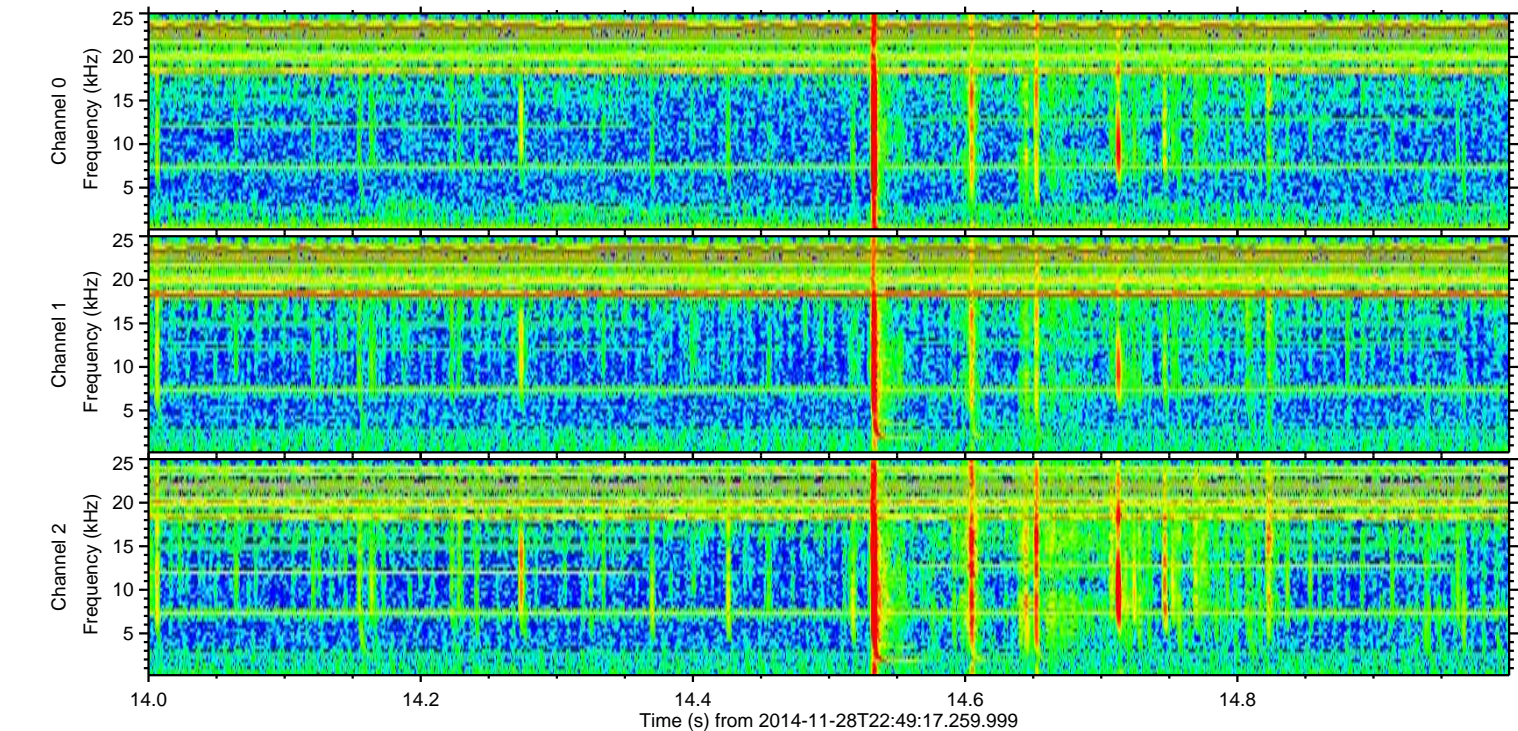
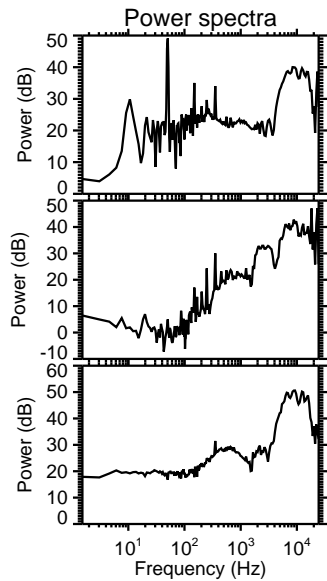
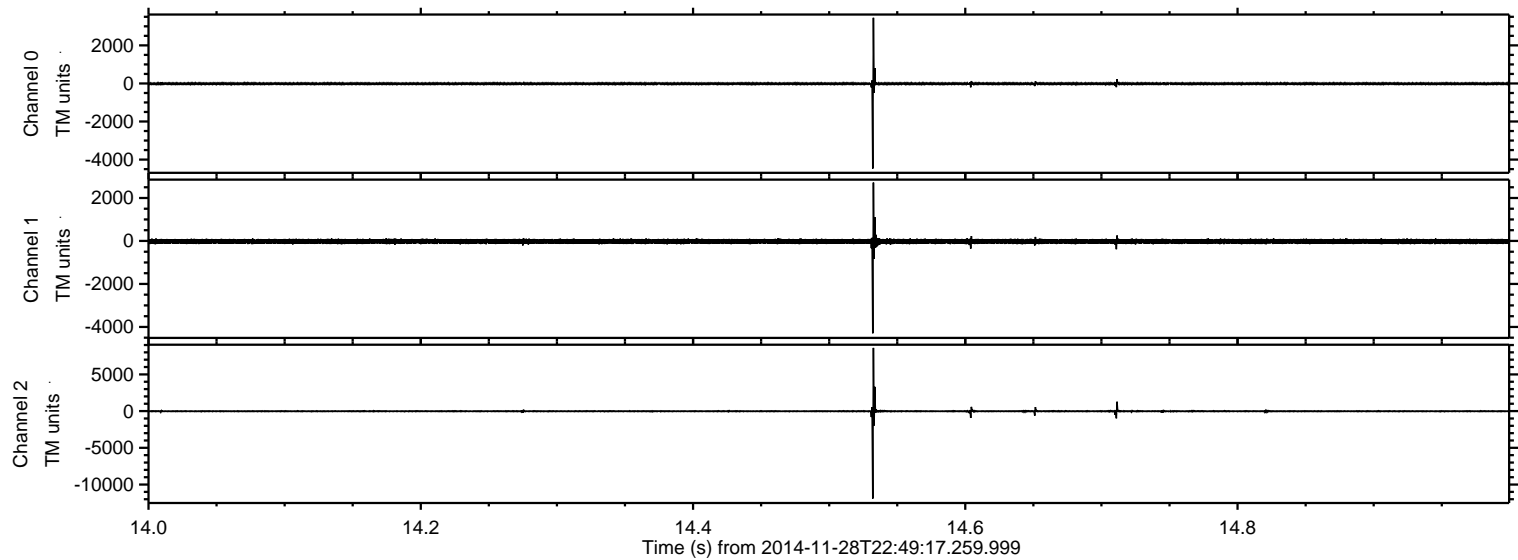
Processed Sat Nov 29 20:58:11 2014 by ELM ver.2012-10-06 from 001\_\_elm20141128\_224916\_\_dat00.bin





ELMAVAN 3D WAVEFORMS (Measured data sampled at 50 kHz) 49630 packets of 144 samples from 2014-11-28T22:49:17.259.999. Part 15/143

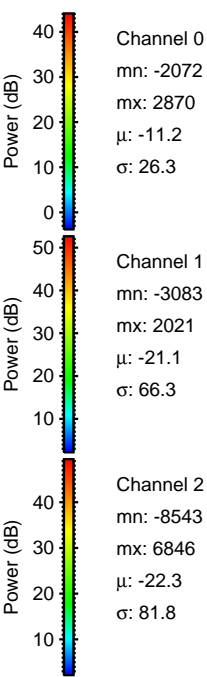
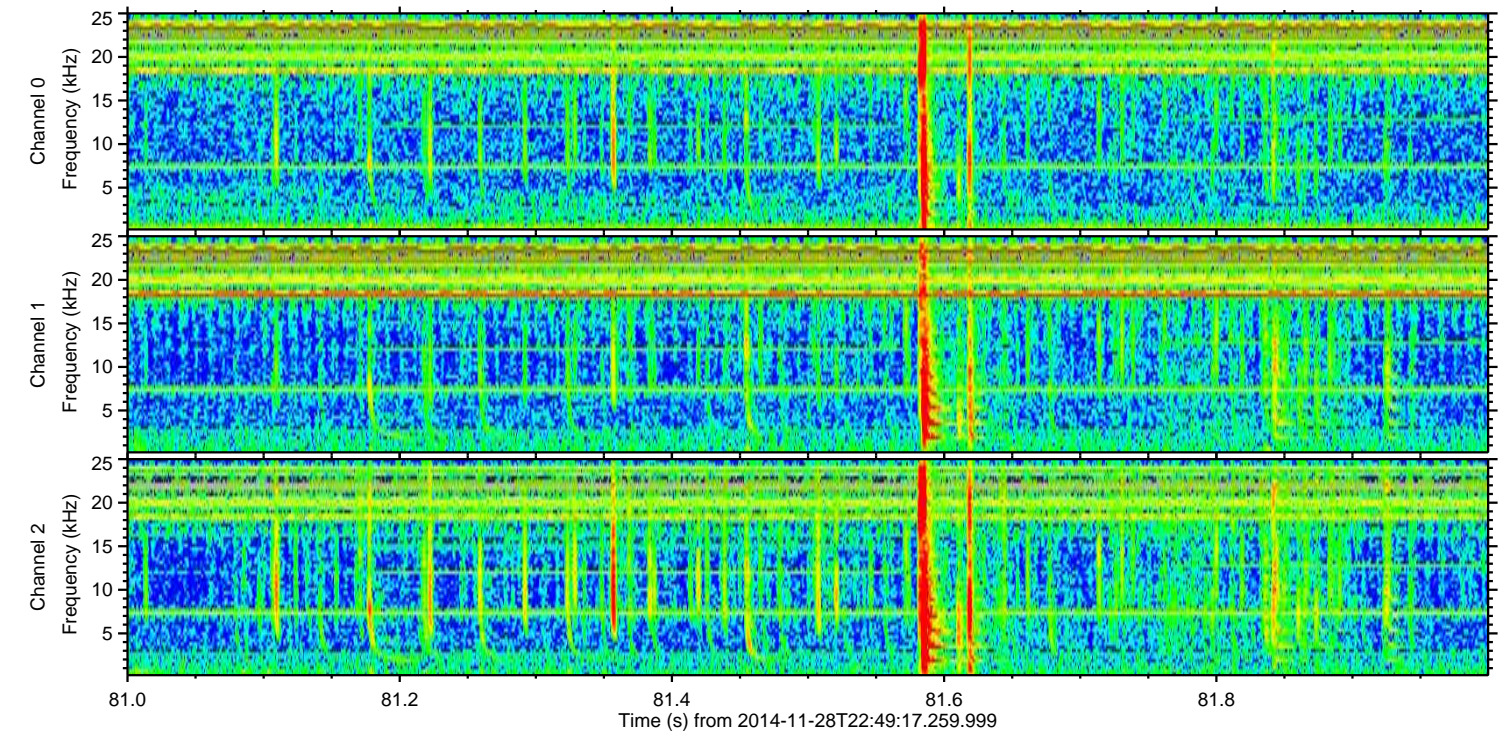
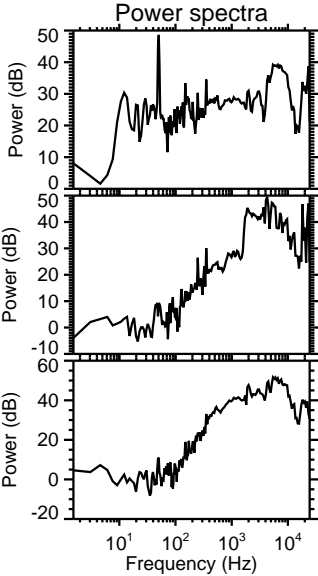
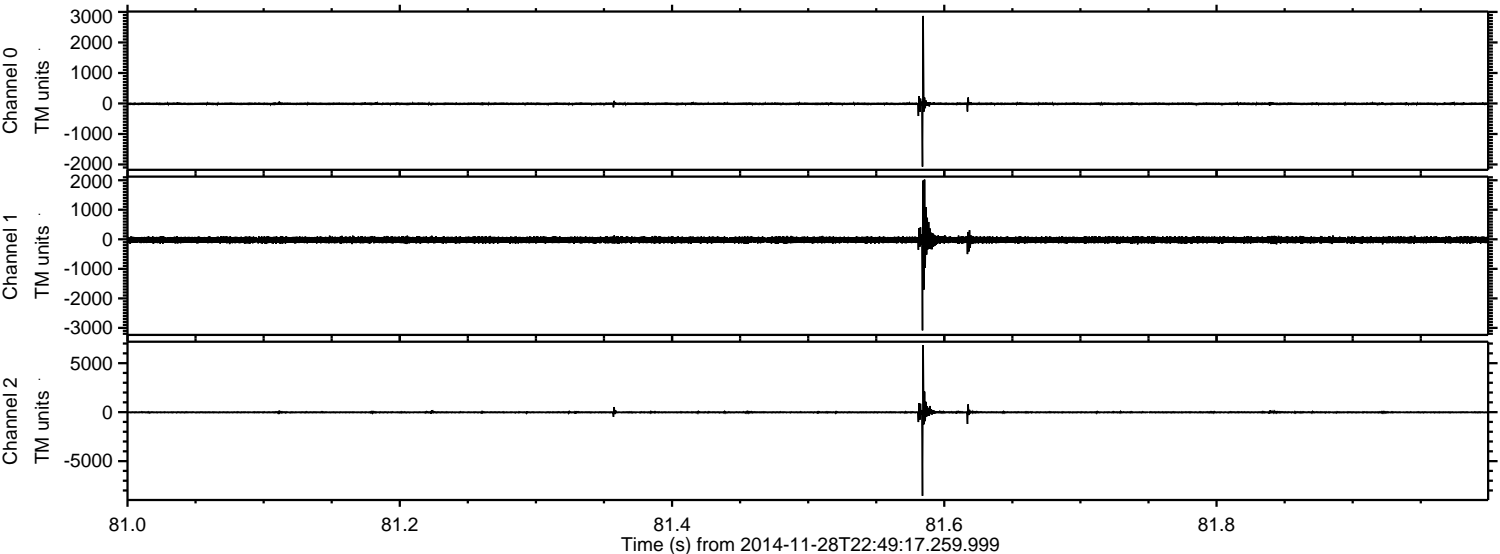
Processed Sat Nov 29 20:58:12 2014 by ELM ver.2012-10-06 from 001\_\_elm20141128\_224916\_\_dat00.bin





ELMAVAN 3D WAVEFORMS (Measured data sampled at 50 kHz) 49630 packets of 144 samples from 2014-11-28T22:49:17.259.999. Part 82/143

Processed Sat Nov 29 20:58:13 2014 by ELM ver.2012-10-06 from 001\_\_elm20141128\_224916\_\_dat00.bin



Channel 0  
mn: -2072  
mx: 2870  
 $\mu$ : -11.2  
 $\sigma$ : 26.3

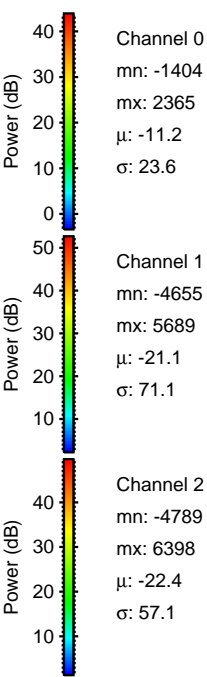
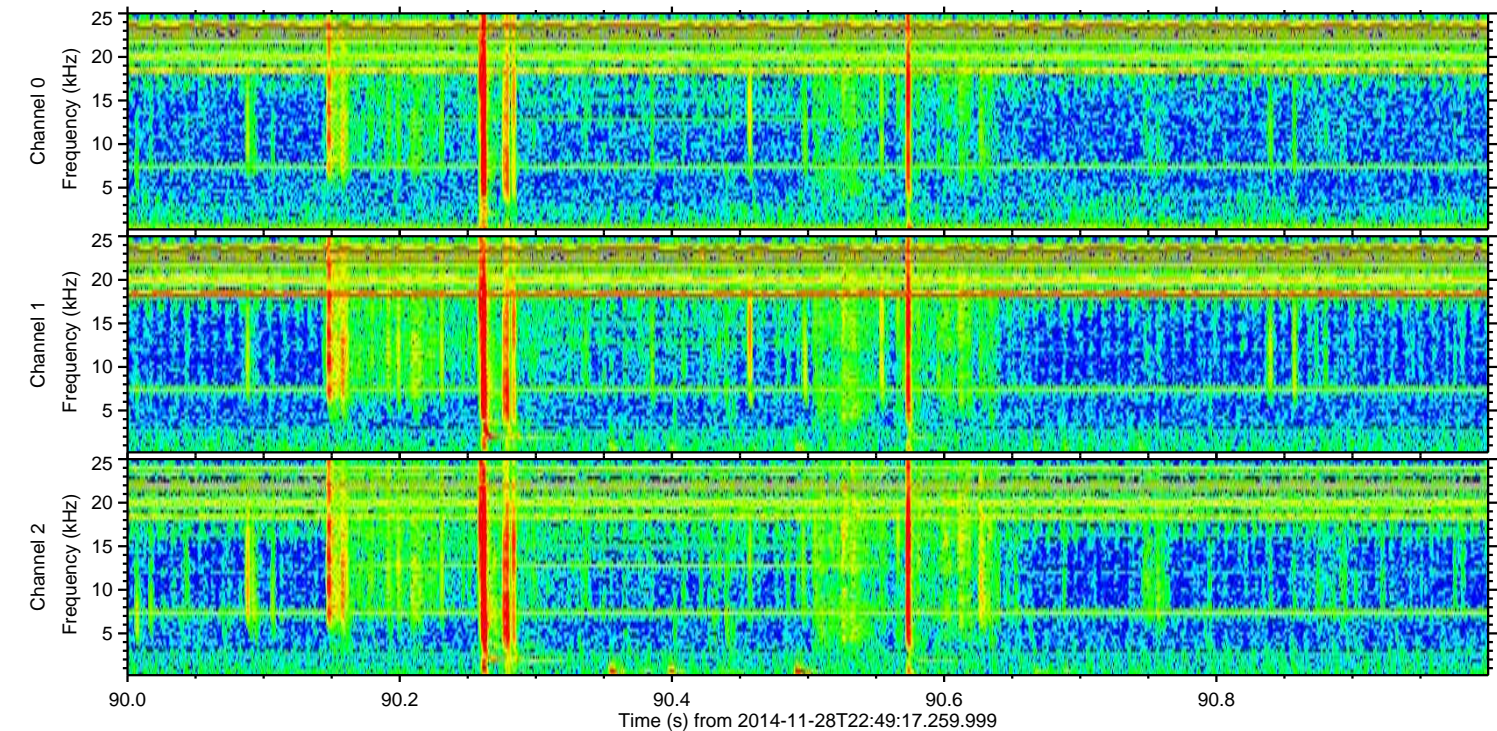
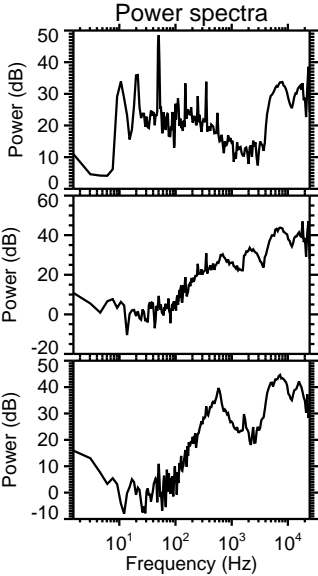
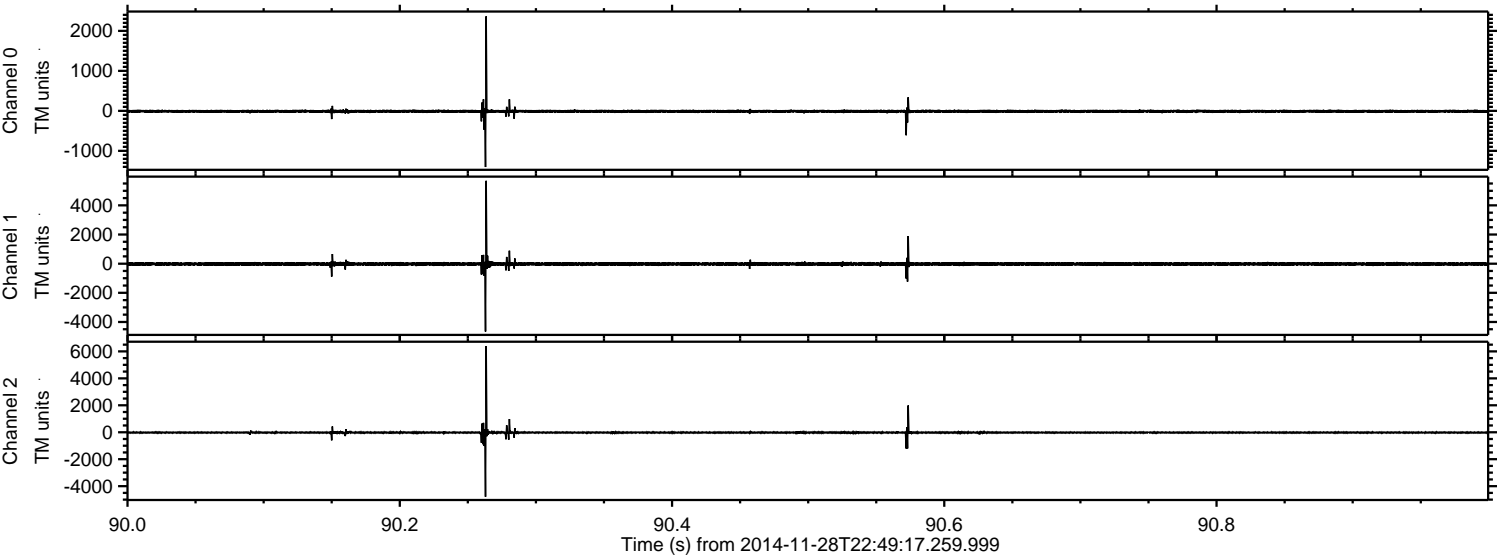
Channel 1  
mn: -3083  
mx: 2021  
 $\mu$ : -21.1  
 $\sigma$ : 66.3

Channel 2  
mn: -8543  
mx: 6846  
 $\mu$ : -22.3  
 $\sigma$ : 81.8



ELMAVAN 3D WAVEFORMS (Measured data sampled at 50 kHz) 49630 packets of 144 samples from 2014-11-28T22:49:17.259.999. Part 91/143

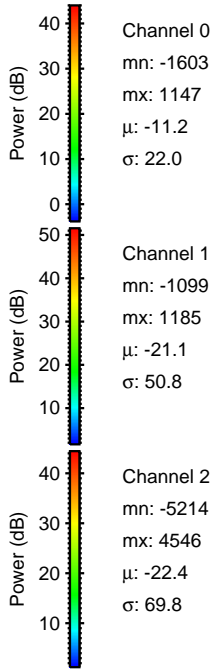
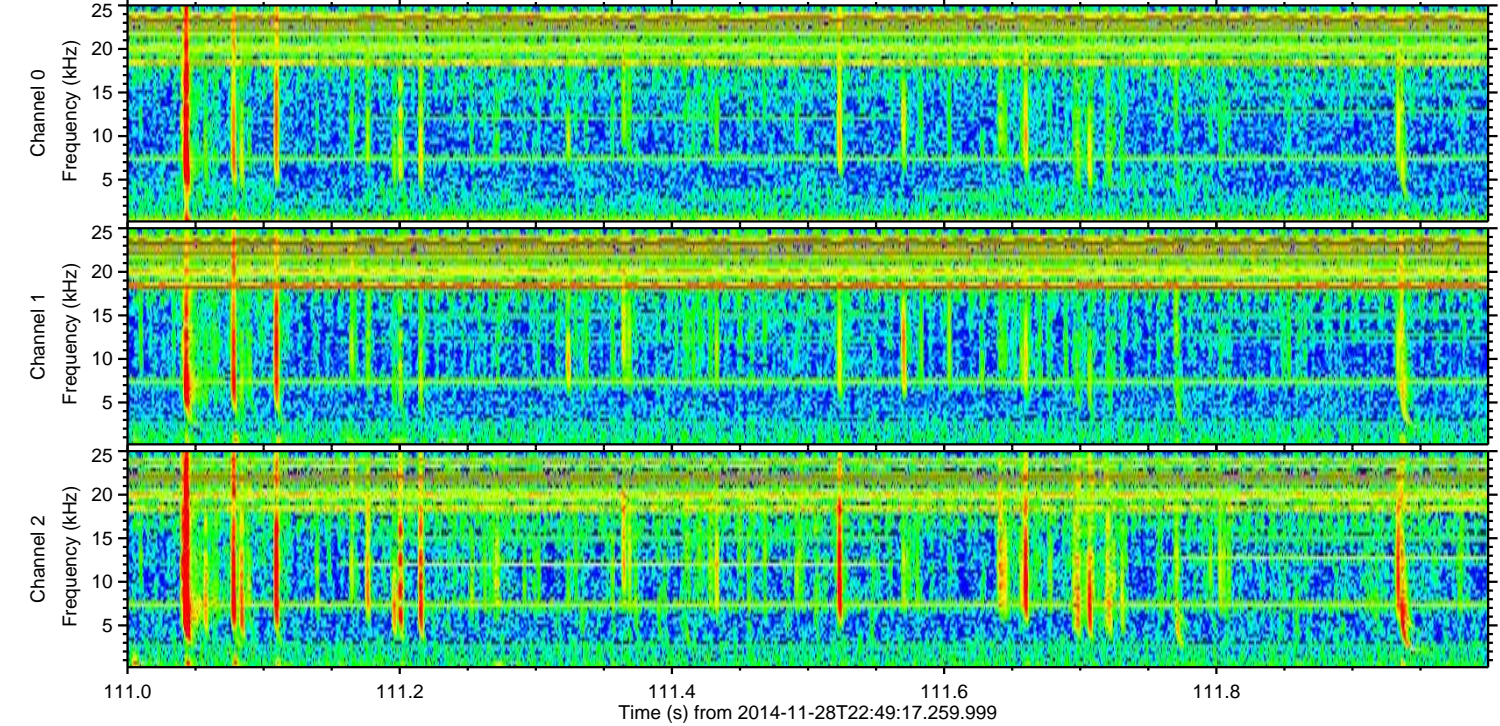
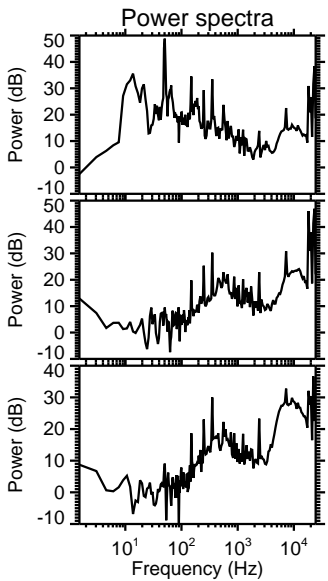
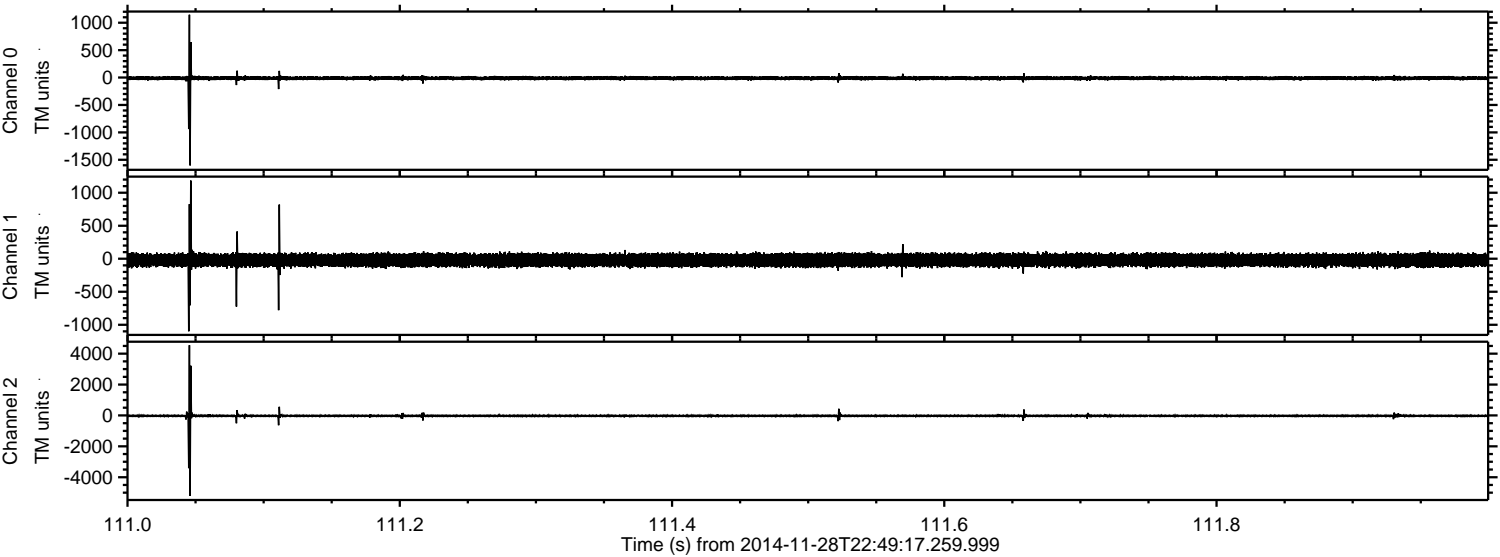
Processed Sat Nov 29 20:58:14 2014 by ELM ver.2012-10-06 from 001\_\_elm20141128\_224916\_\_dat00.bin





ELMAVAN 3D WAVEFORMS (Measured data sampled at 50 kHz) 49630 packets of 144 samples from 2014-11-28T22:49:17.259.999. Part 112/143

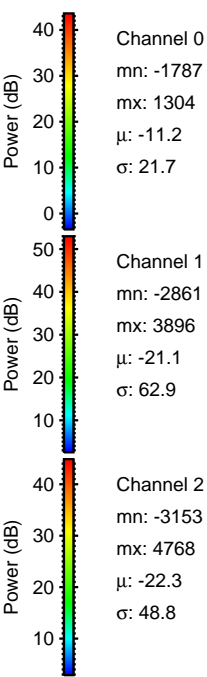
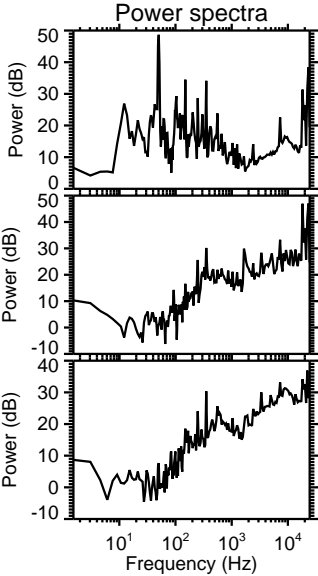
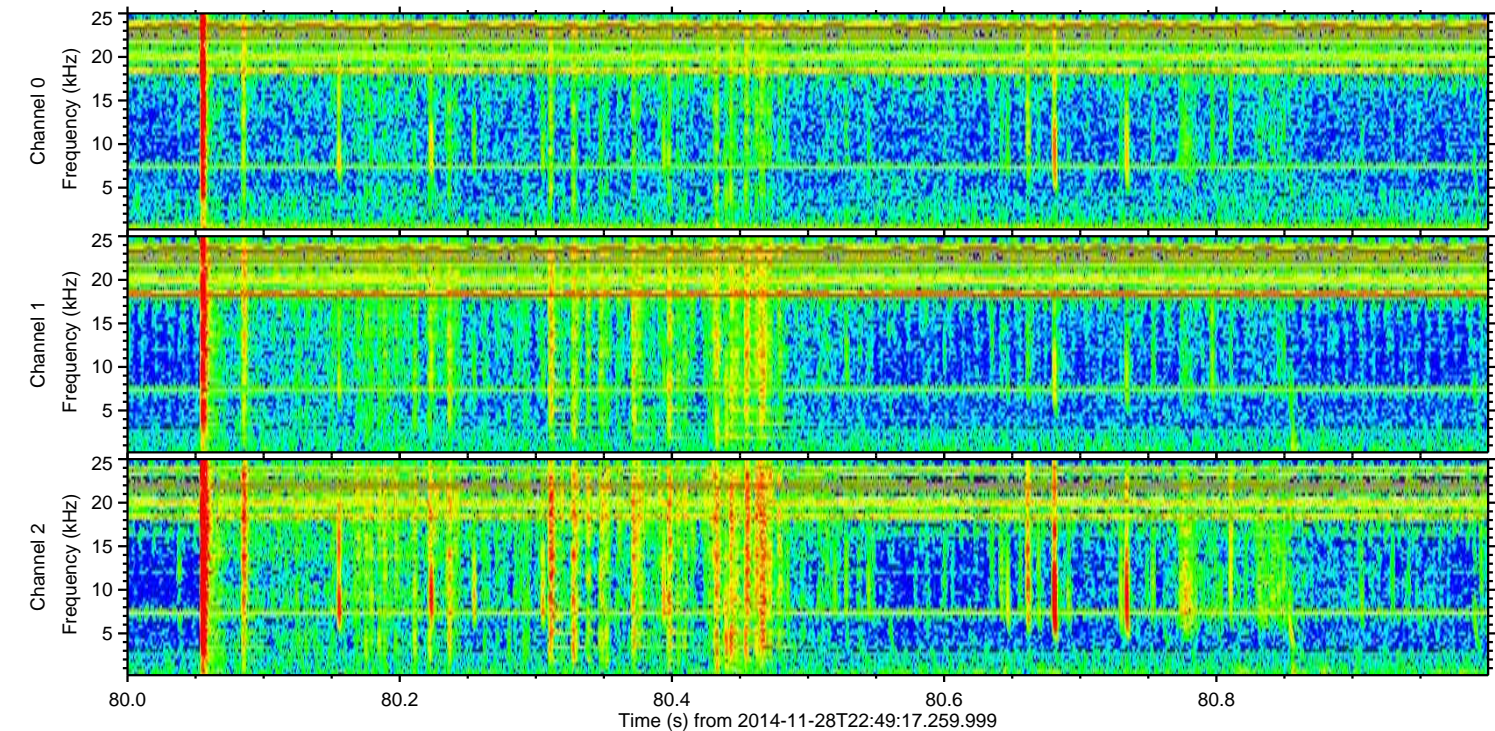
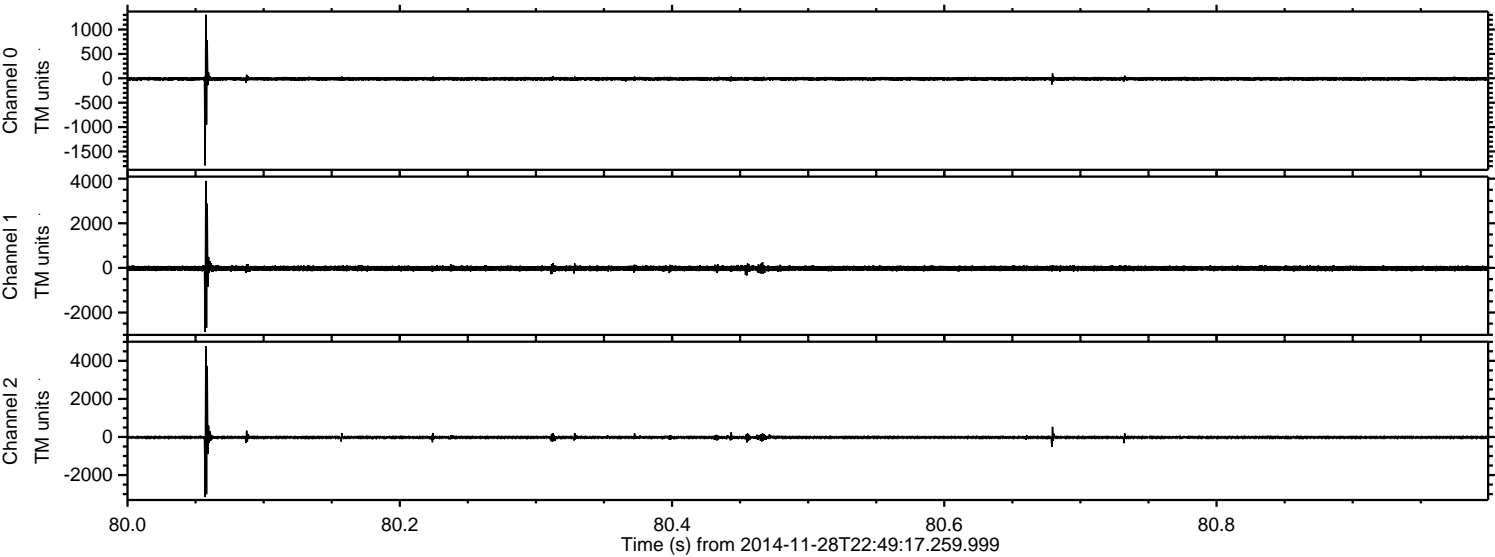
Processed Sat Nov 29 20:58:15 2014 by ELM ver.2012-10-06 from 001\_\_elm20141128\_224916\_\_dat00.bin





ELMAVAN 3D WAVEFORMS (Measured data sampled at 50 kHz) 49630 packets of 144 samples from 2014-11-28T22:49:17.259.999. Part 81/143

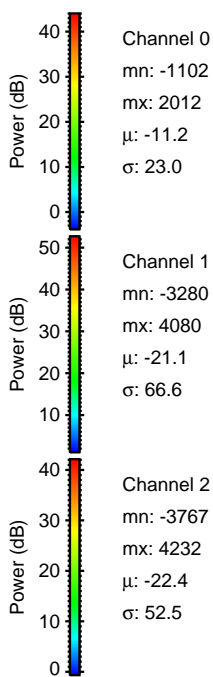
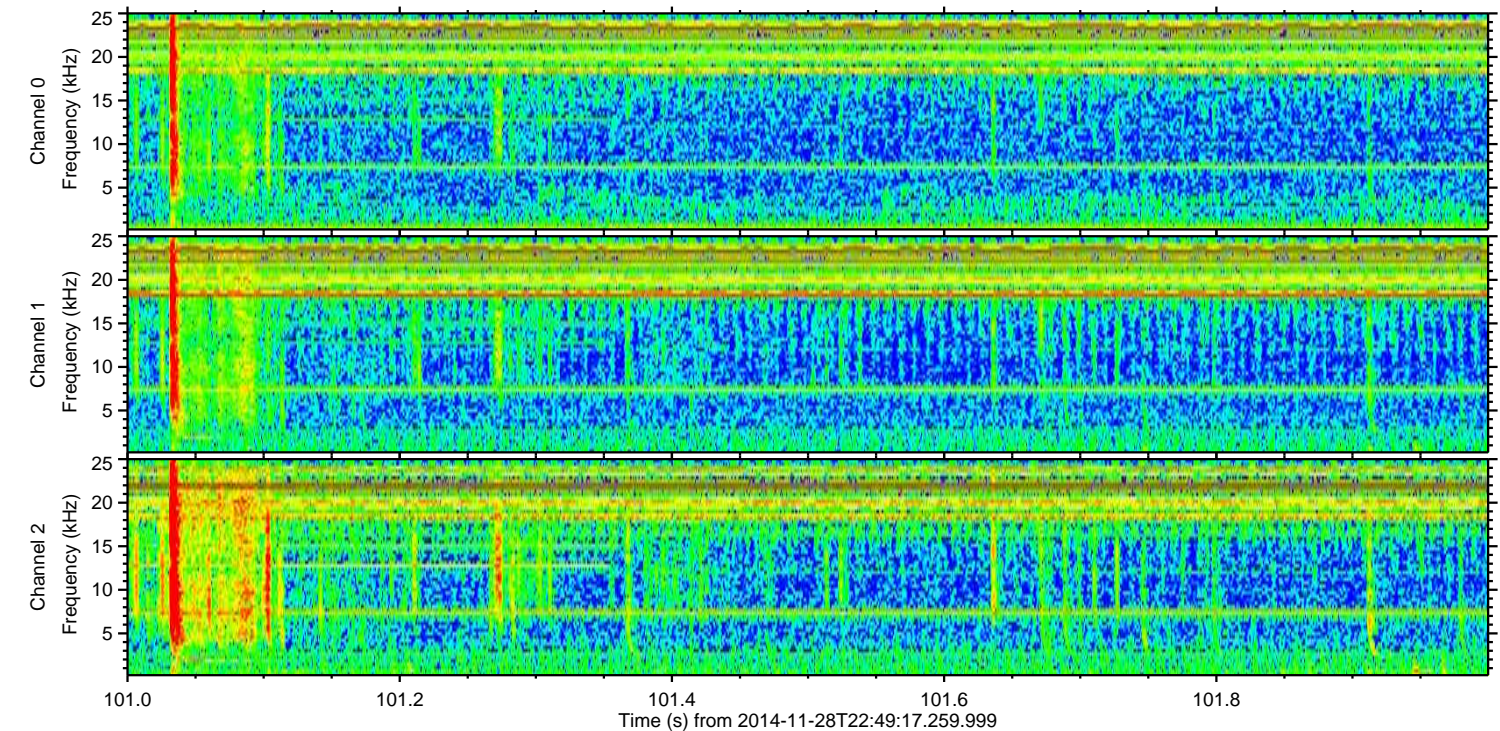
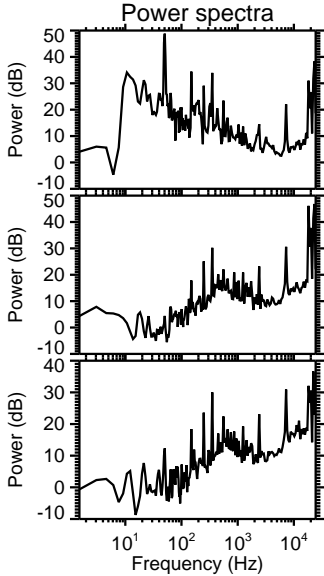
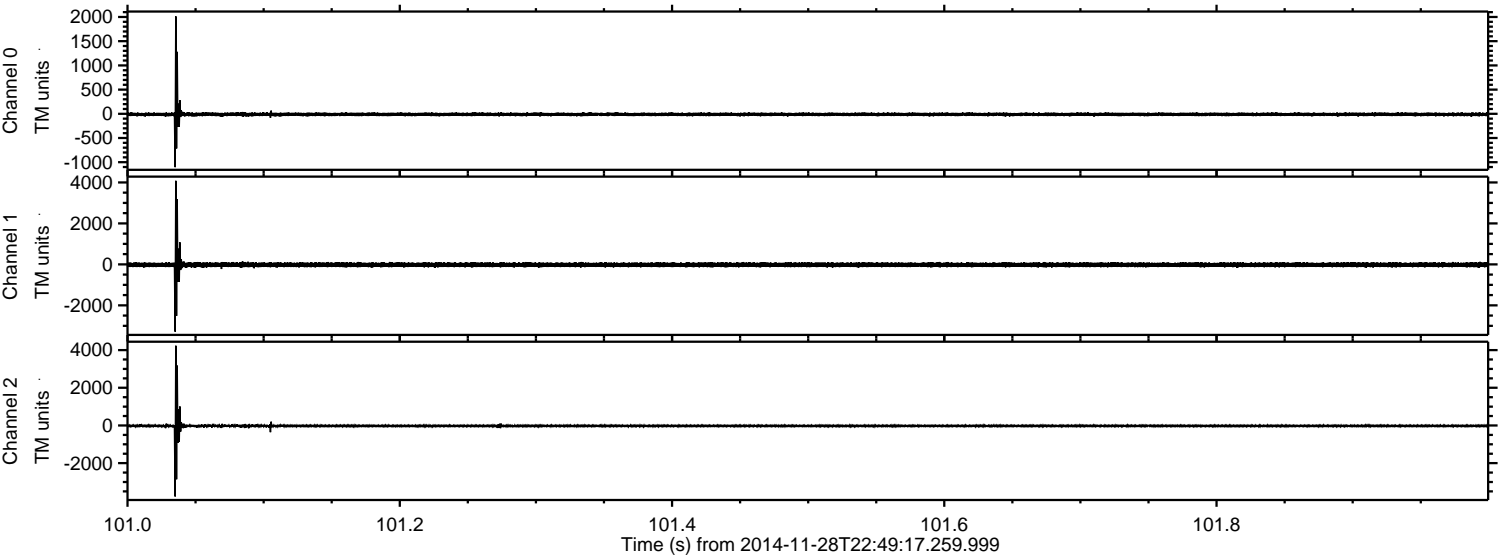
Processed Sat Nov 29 20:58:16 2014 by ELM ver.2012-10-06 from 001\_\_elm20141128\_224916\_\_dat00.bin





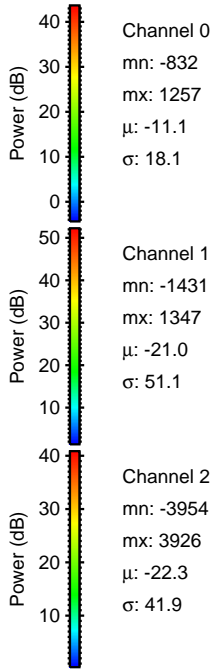
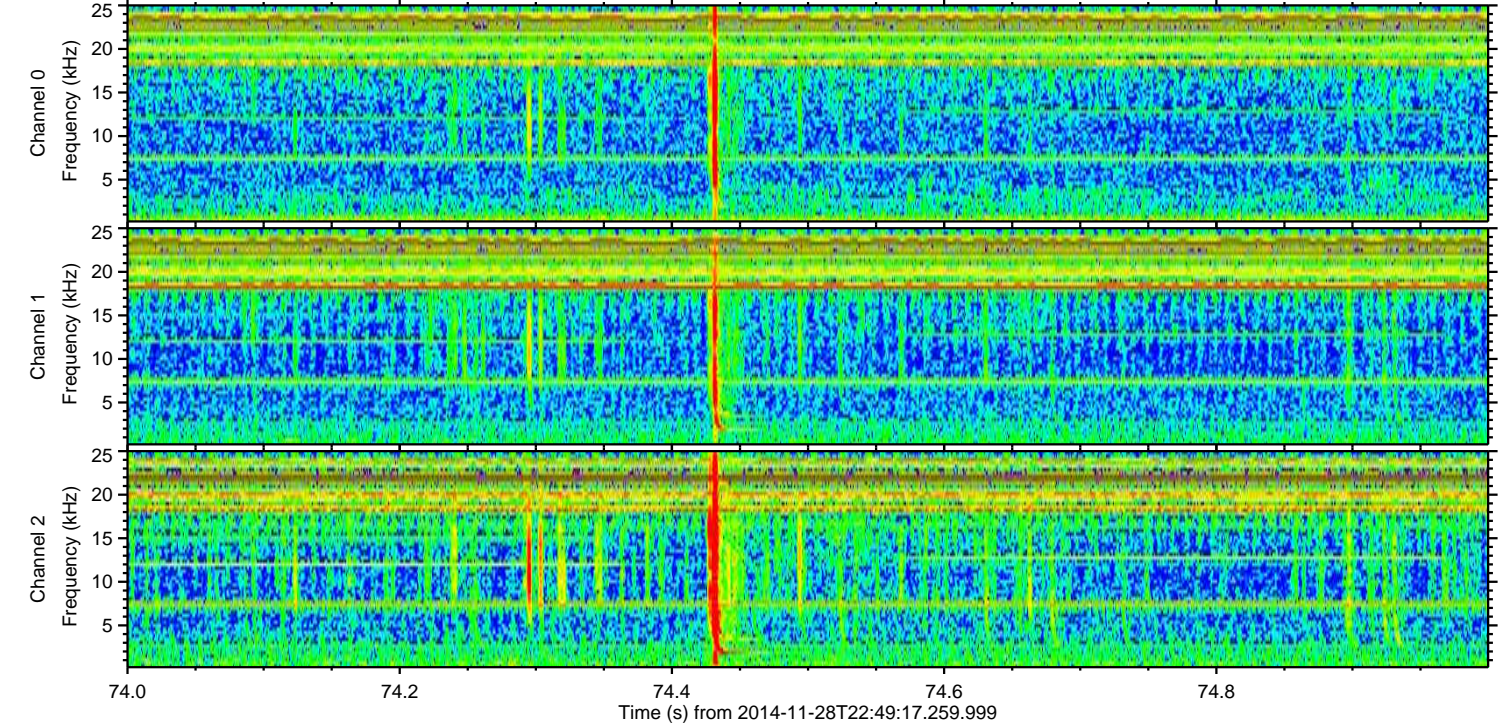
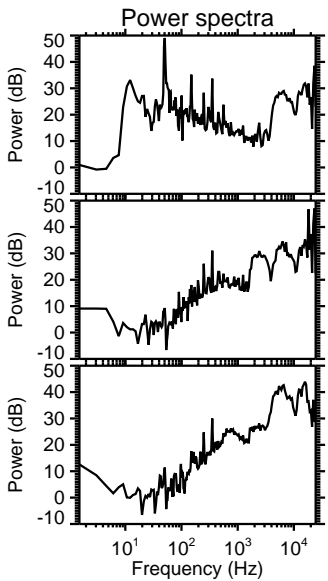
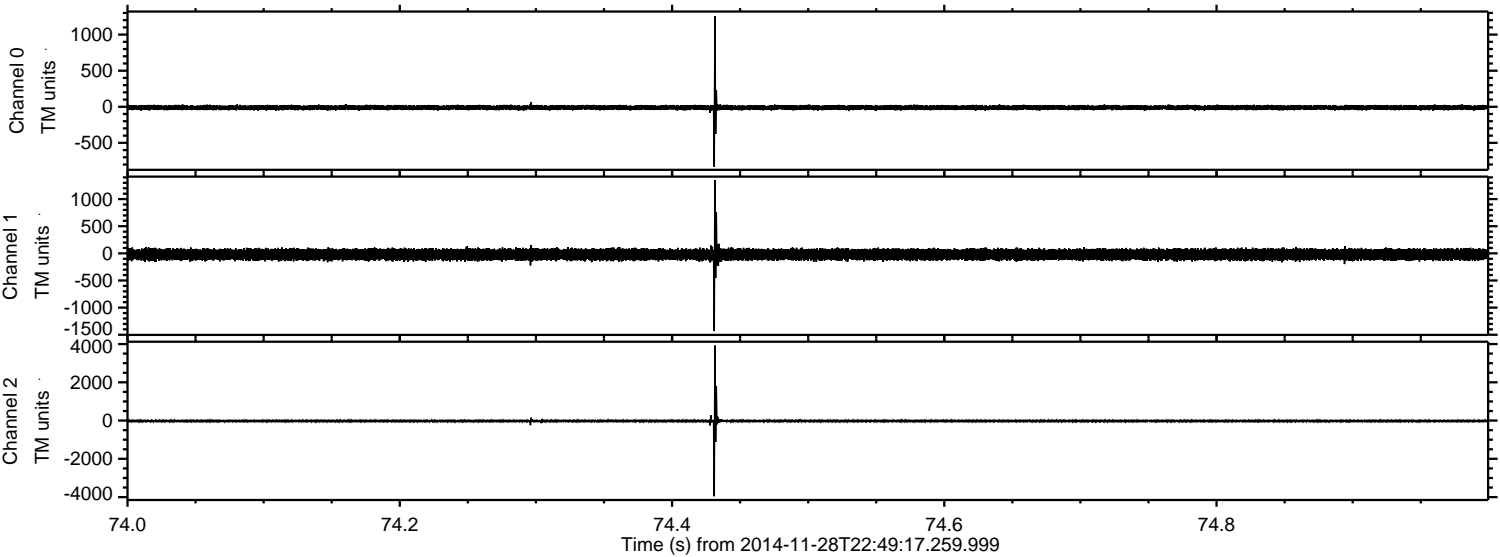
ELMAVAN 3D WAVEFORMS (Measured data sampled at 50 kHz) 49630 packets of 144 samples from 2014-11-28T22:49:17.259.999. Part 102/143

Processed Sat Nov 29 20:58:17 2014 by ELM ver.2012-10-06 from 001\_\_elm20141128\_224916\_\_dat00.bin





Processed Sat Nov 29 20:58:18 2014 by ELM ver.2012-10-06 from 001\_\_elm20141128\_224916\_\_dat00.bin



Channel 0  
mn: -832  
mx: 1257  
 $\mu$ : -11.1  
 $\sigma$ : 18.1

Channel 1  
mn: -1431  
mx: 1347  
 $\mu$ : -21.0  
 $\sigma$ : 51.1

Channel 2  
mn: -3954  
mx: 3926  
 $\mu$ : -22.3  
 $\sigma$ : 41.9



ELMAVAN 3D WAVEFORMS (Measured data sampled at 50 kHz) 49630 packets of 144 samples from 2014-11-28T22:49:17.259.999. Part 114/143

