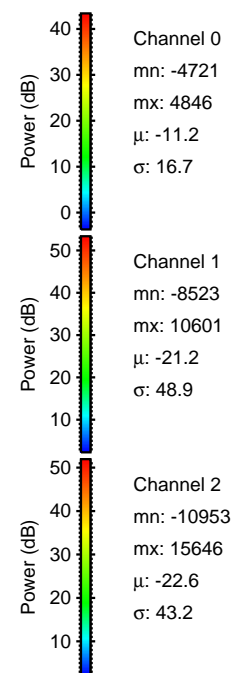
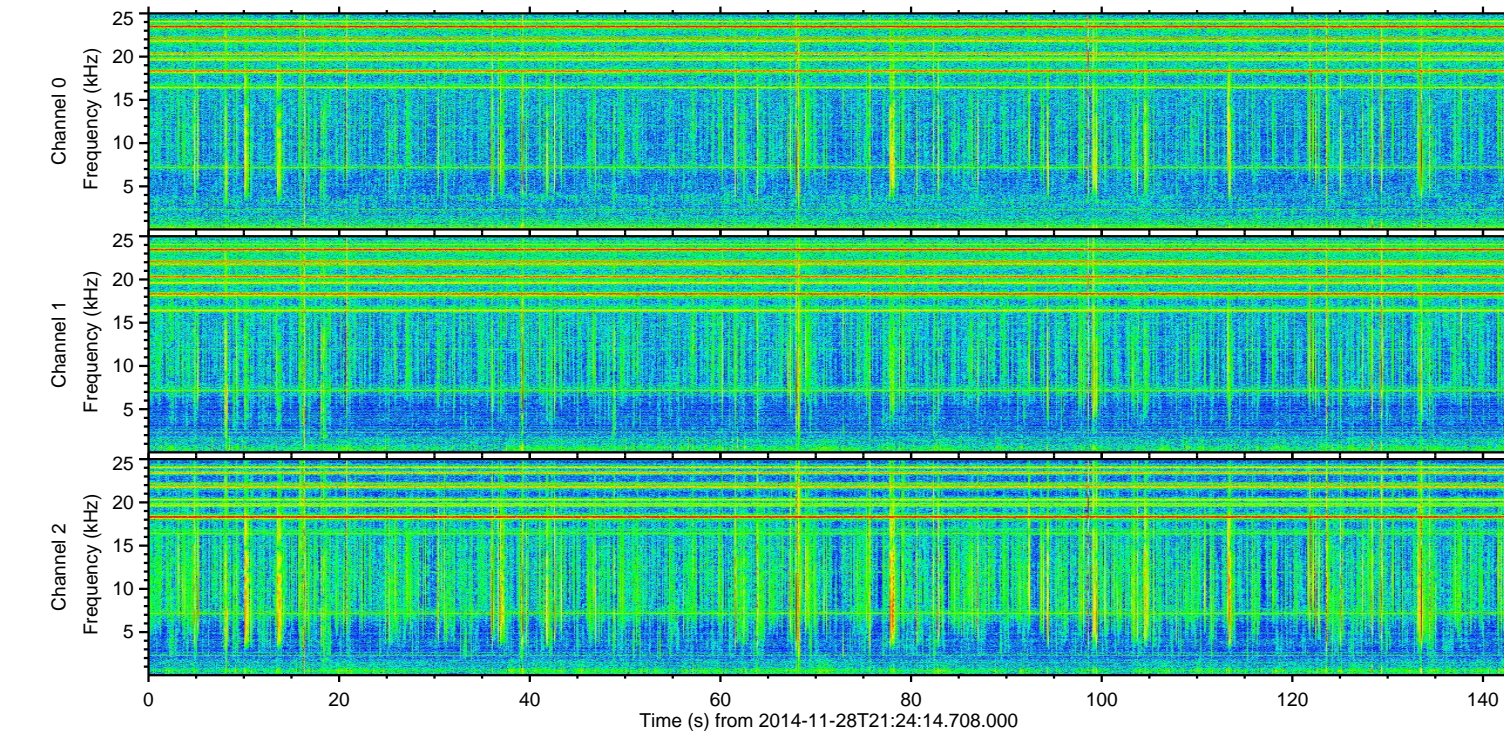
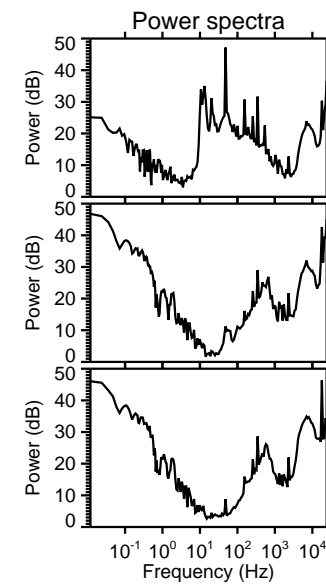
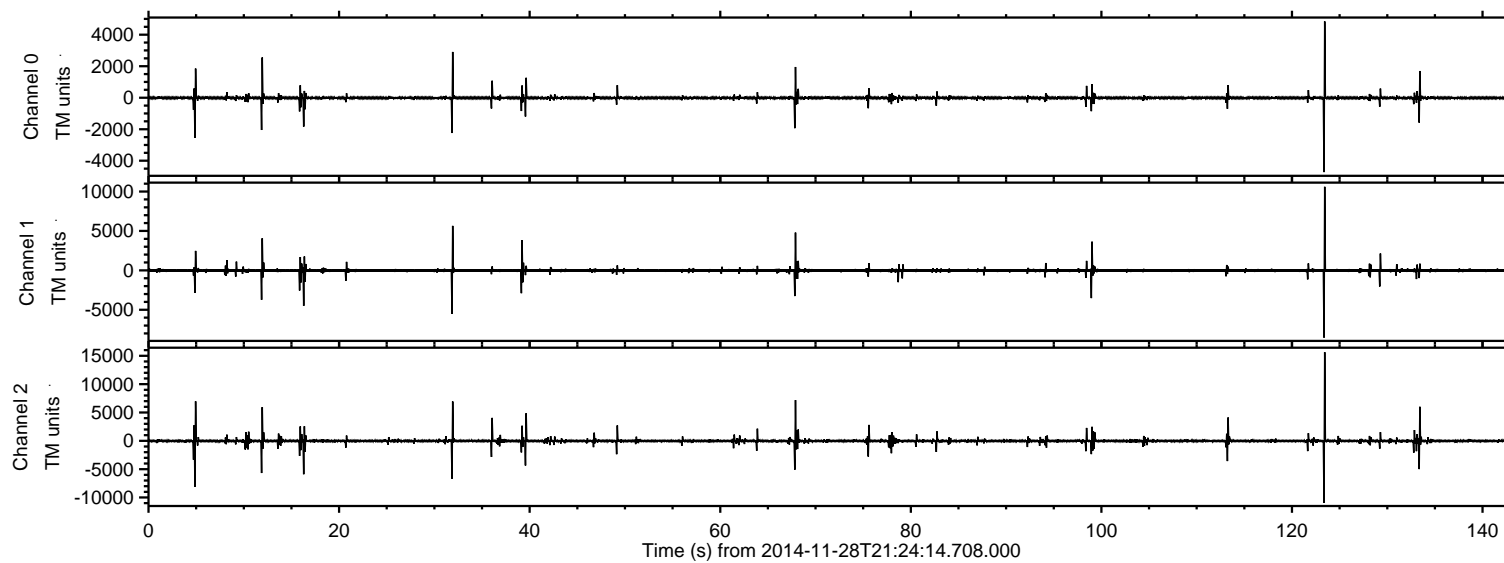


# ELMAVAN 3D WAVEFORMS (Measured data sampled at 50 kHz) 49580 packets of 144 samples from 2014-11-28T21:24:14.708.000.

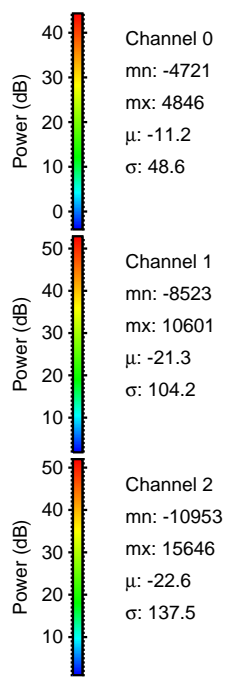
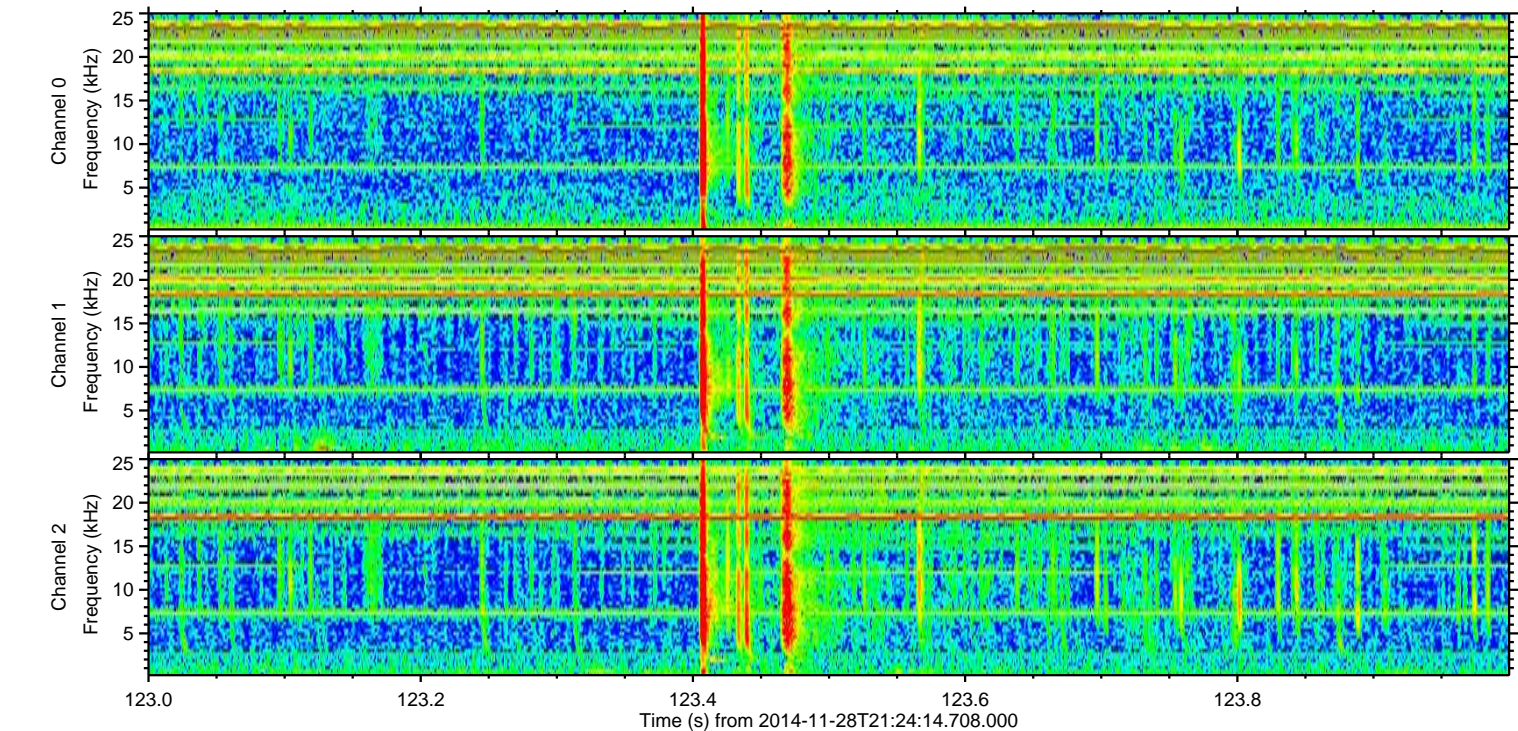
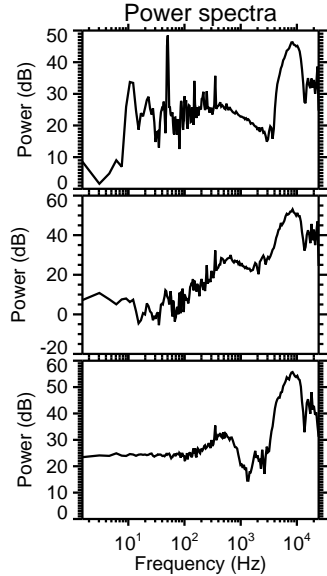
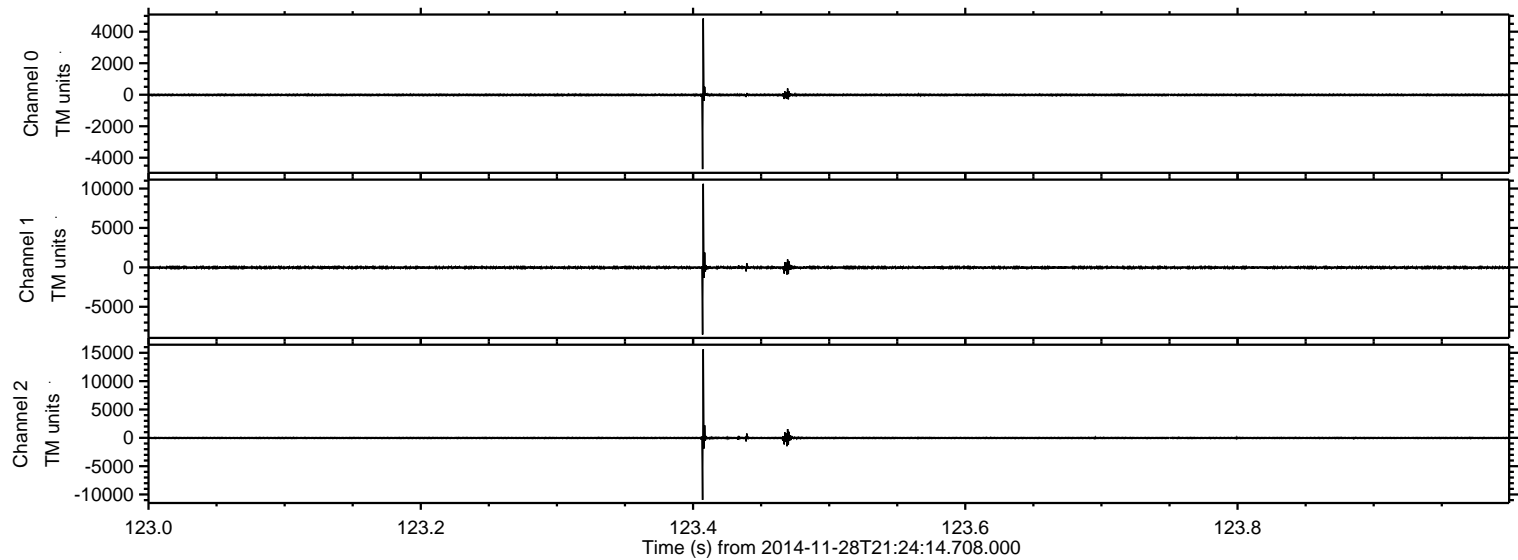
Processed Sat Nov 29 19:11:54 2014 by ELM ver.2012-10-06 from 001\_\_elm20141128\_212413\_\_dat00.bin





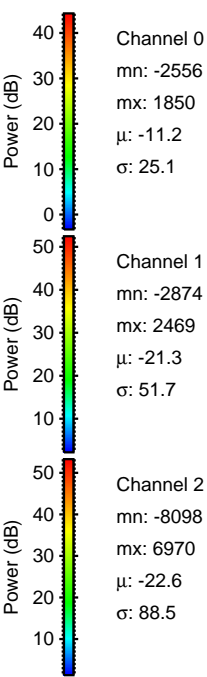
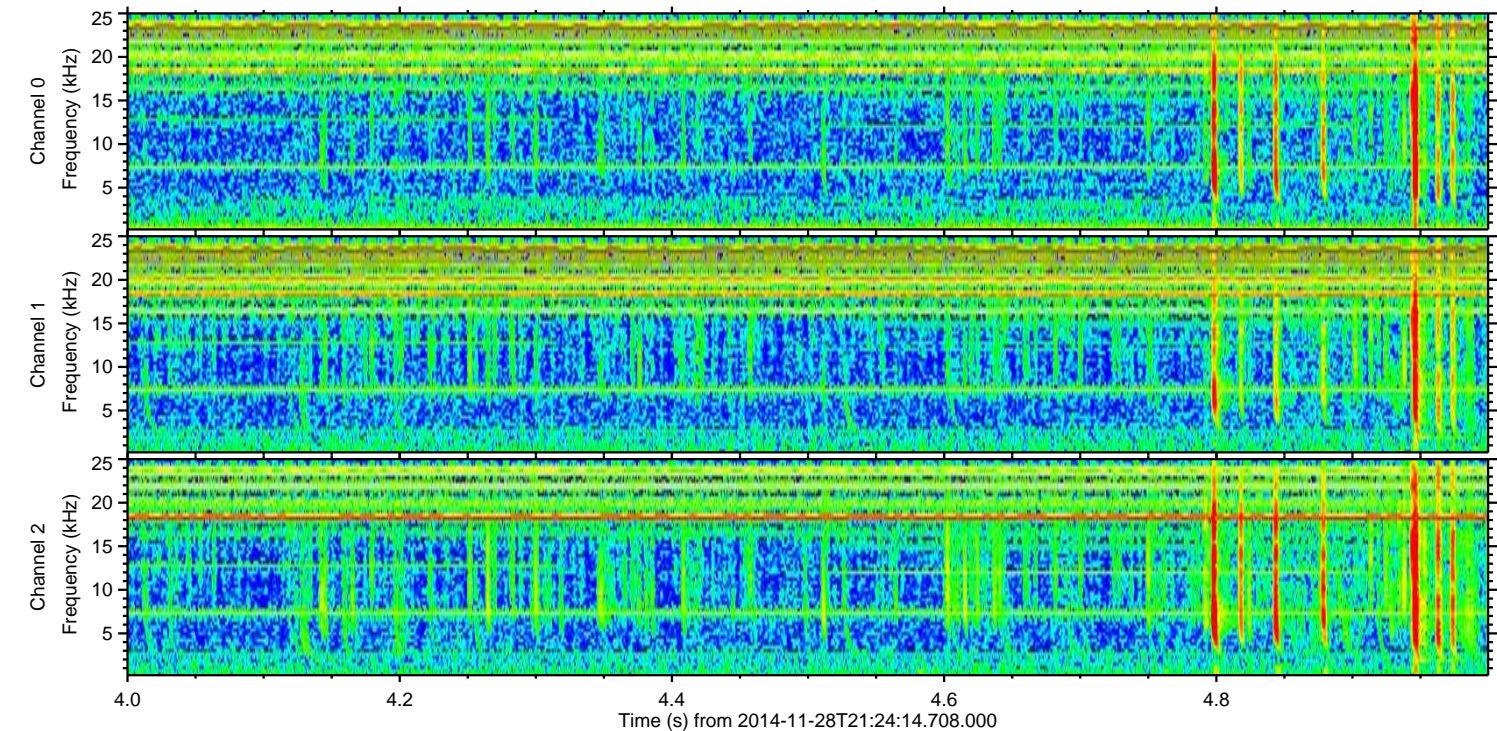
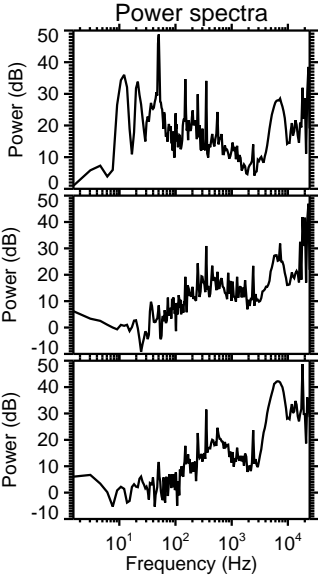
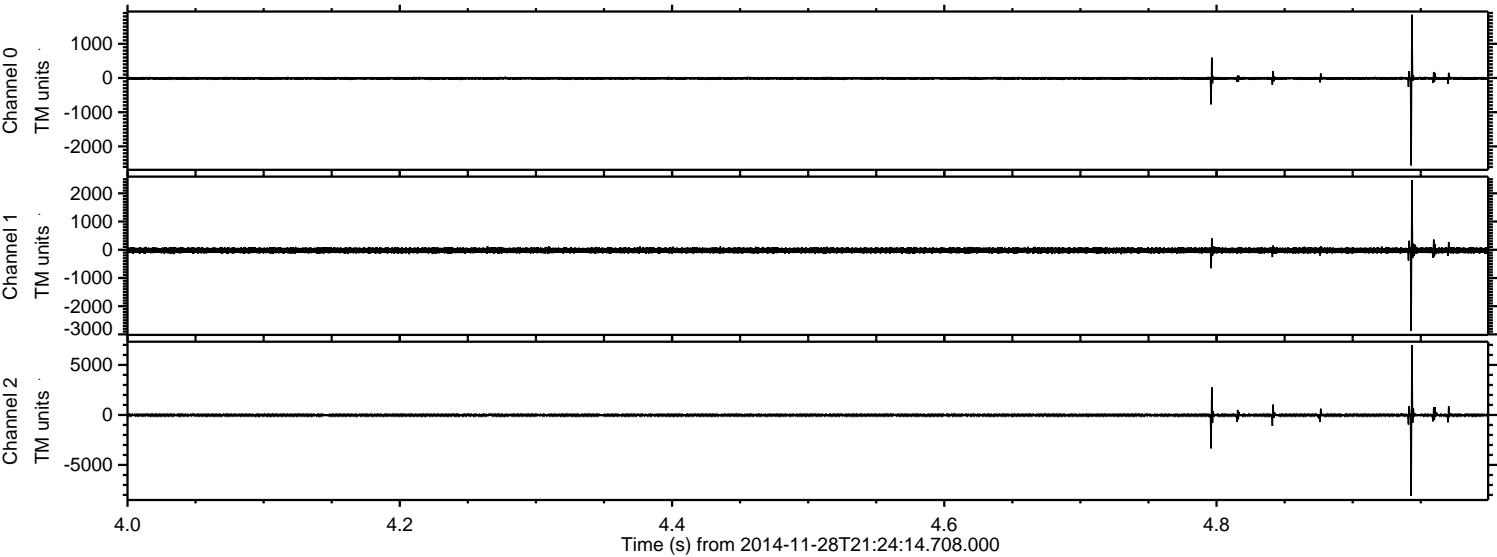
ELMAVAN 3D WAVEFORMS (Measured data sampled at 50 kHz) 49580 packets of 144 samples from 2014-11-28T21:24:14.708.000. Part 124/143

Processed Sat Nov 29 19:12:10 2014 by ELM ver.2012-10-06 from 001\_\_elm20141128\_212413\_\_dat00.bin



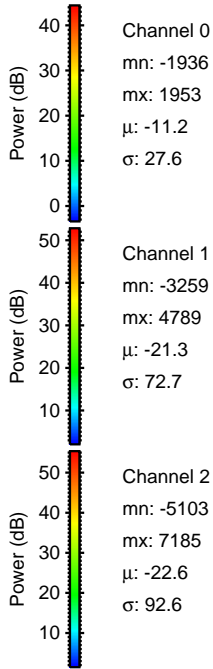
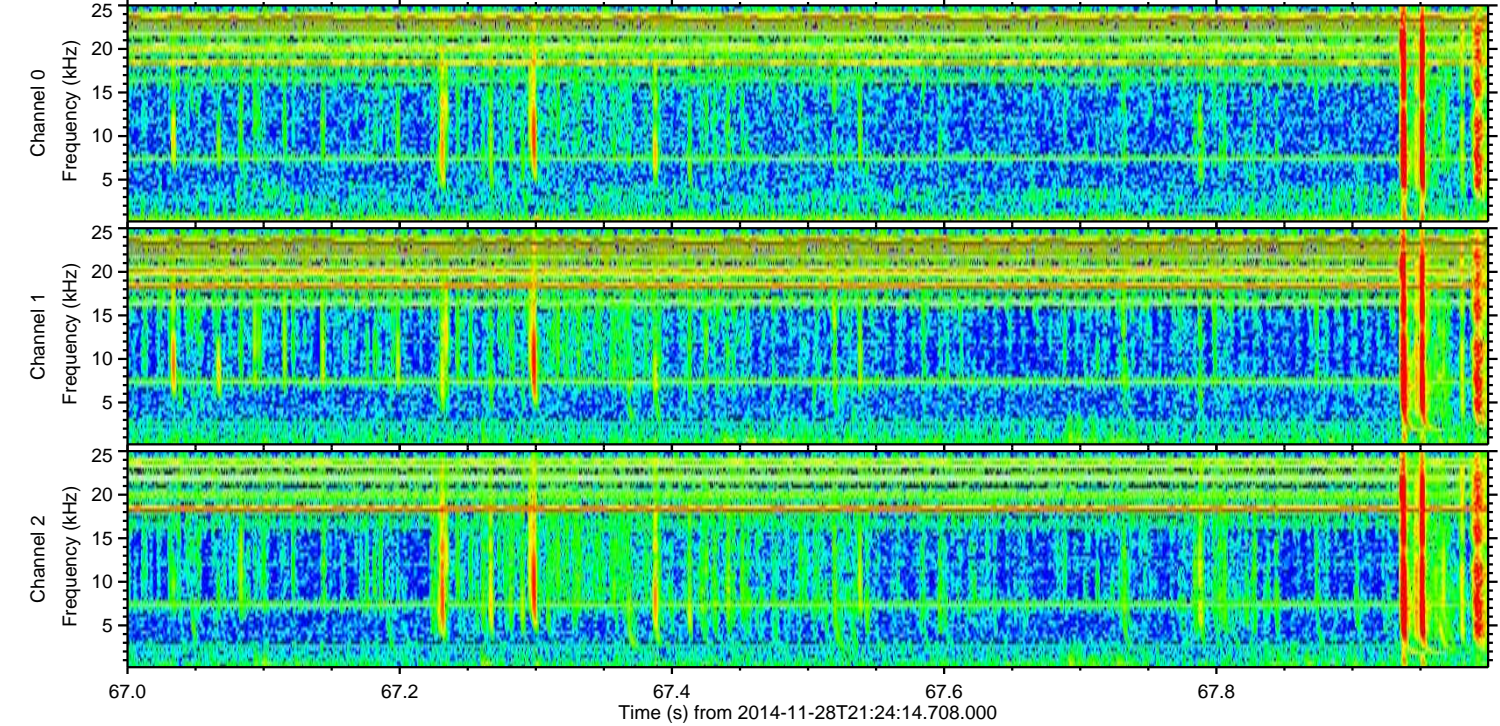
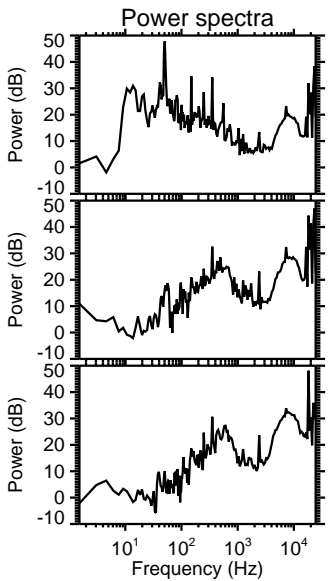
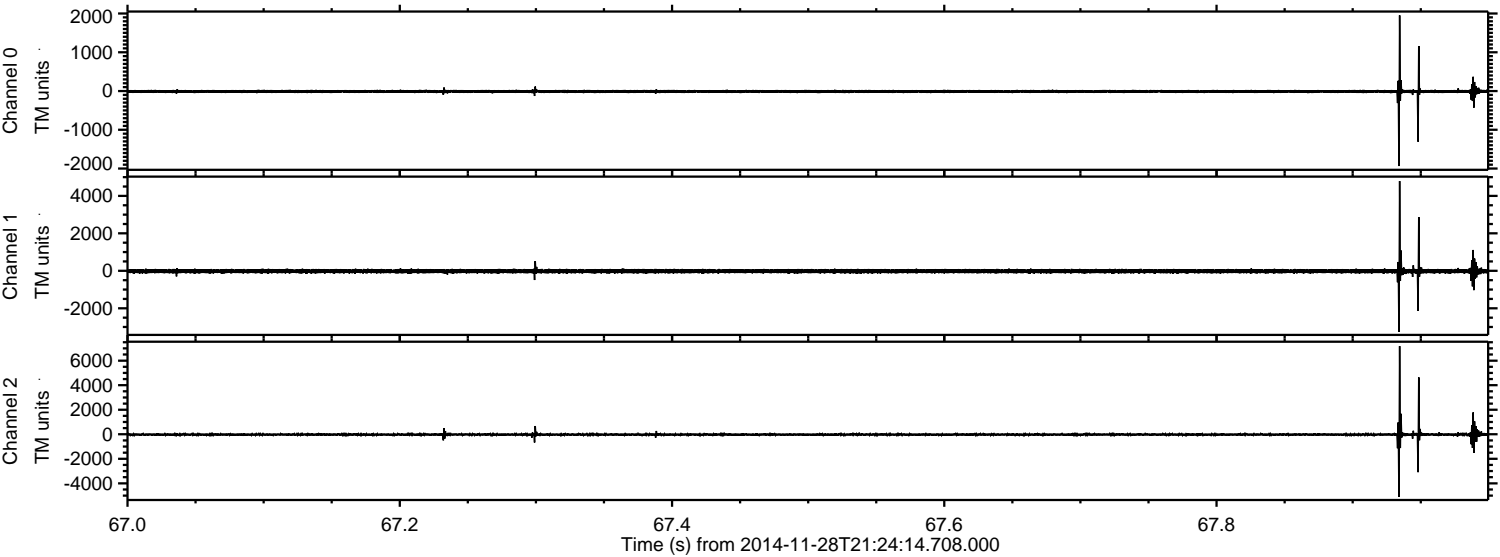


Processed Sat Nov 29 19:12:11 2014 by ELM ver.2012-10-06 from 001\_\_elm20141128\_212413\_\_dat00.bin





Processed Sat Nov 29 19:12:13 2014 by ELM ver.2012-10-06 from 001\_\_elm20141128\_212413\_\_dat00.bin



Channel 0  
mn: -1936  
mx: 1953  
 $\mu$ : -11.2  
 $\sigma$ : 27.6

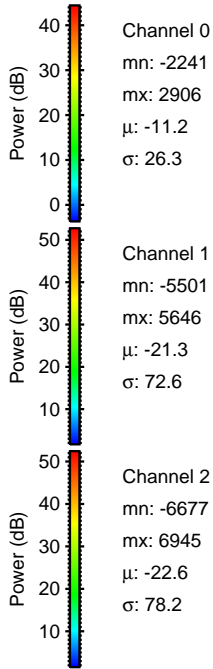
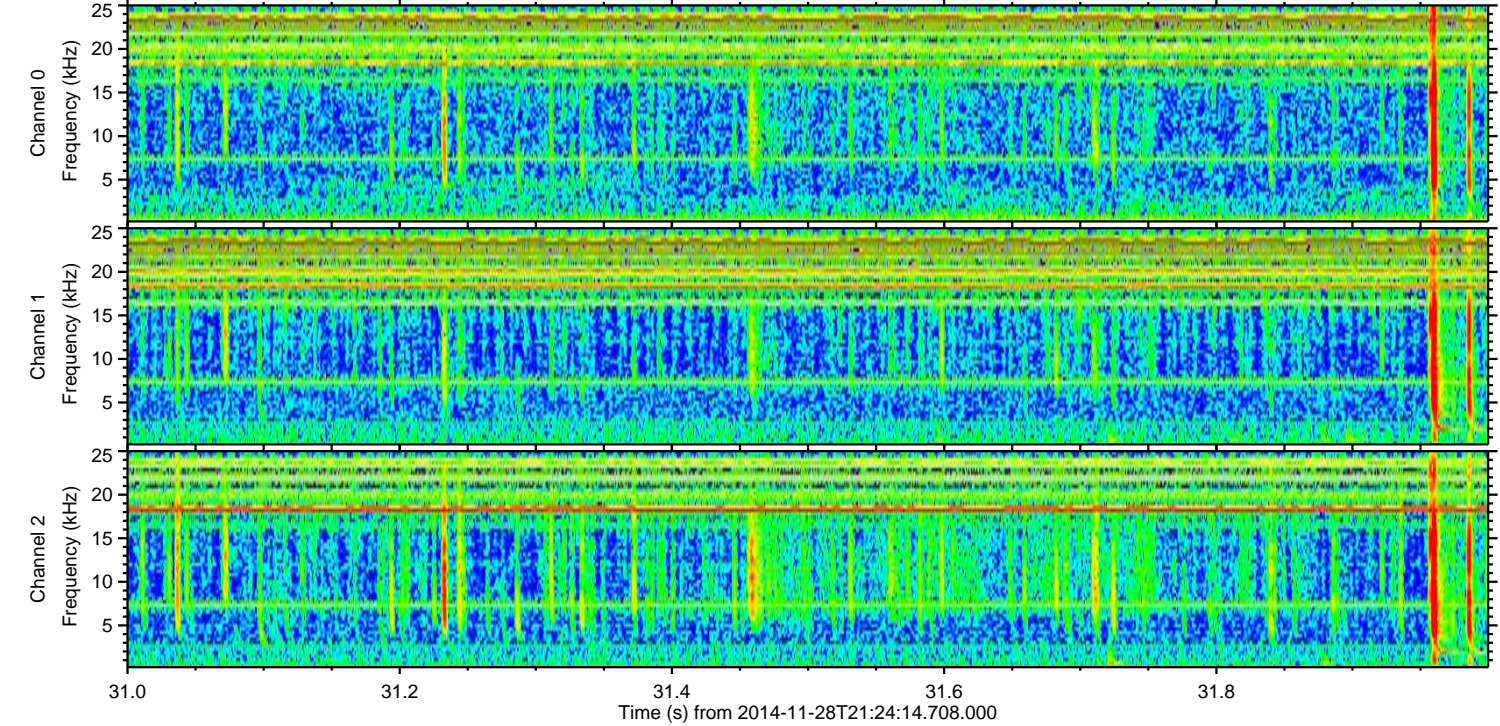
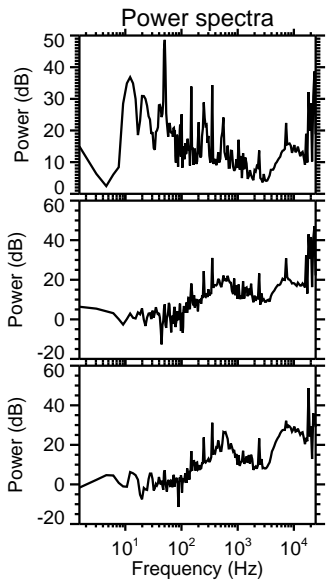
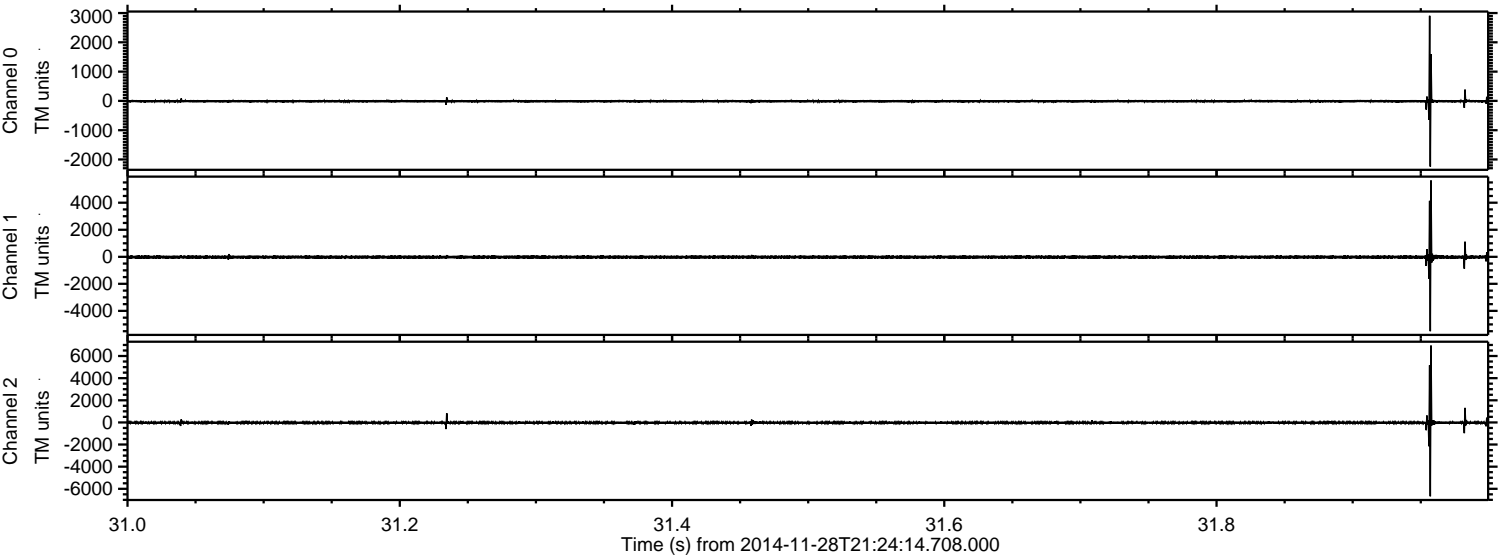
Channel 1  
mn: -3259  
mx: 4789  
 $\mu$ : -21.3  
 $\sigma$ : 72.7

Channel 2  
mn: -5103  
mx: 7185  
 $\mu$ : -22.6  
 $\sigma$ : 92.6



ELMAVAN 3D WAVEFORMS (Measured data sampled at 50 kHz) 49580 packets of 144 samples from 2014-11-28T21:24:14.708.000. Part 32/143

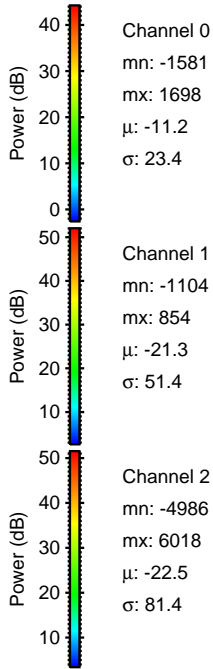
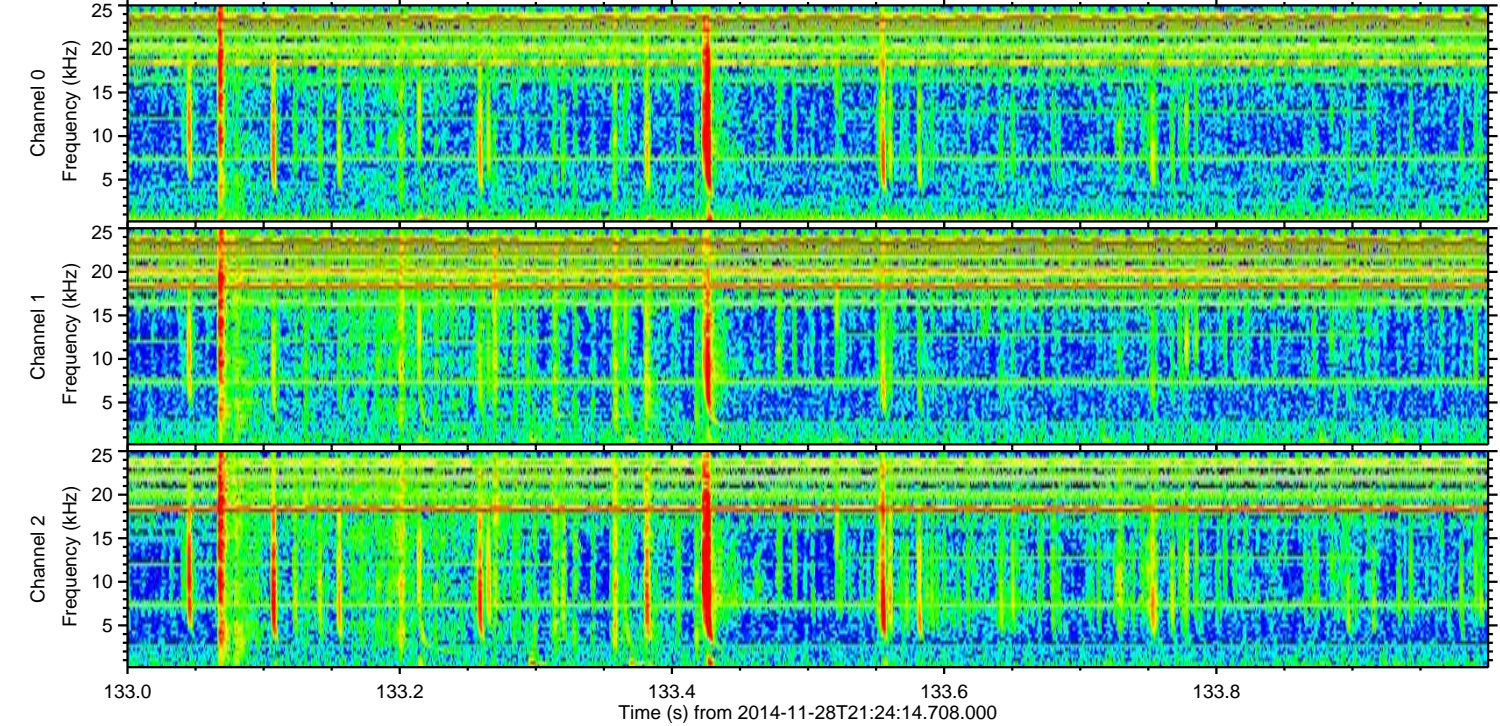
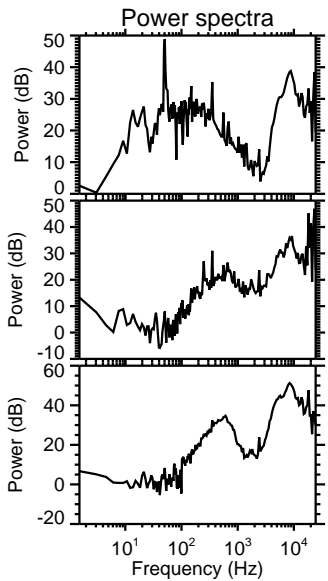
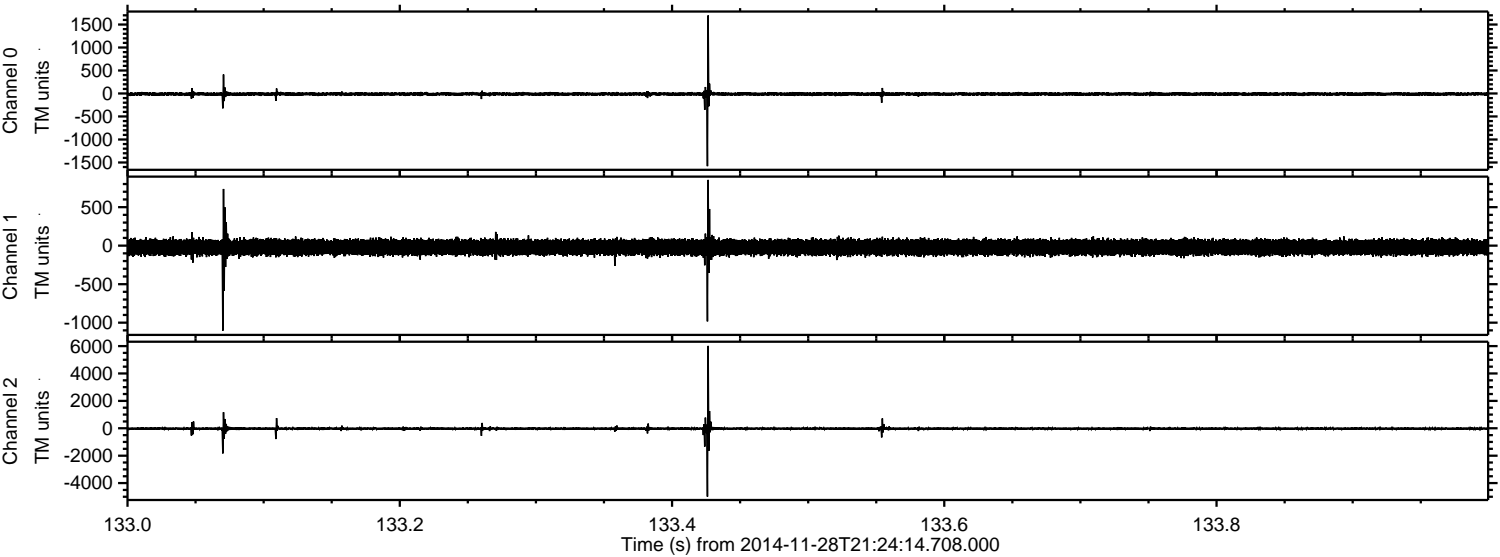
Processed Sat Nov 29 19:12:14 2014 by ELM ver.2012-10-06 from 001\_\_elm20141128\_212413\_\_dat00.bin





ELMAVAN 3D WAVEFORMS (Measured data sampled at 50 kHz) 49580 packets of 144 samples from 2014-11-28T21:24:14.708.000. Part 134/143

Processed Sat Nov 29 19:12:15 2014 by ELM ver.2012-10-06 from 001\_\_elm20141128\_212413\_\_dat00.bin



Channel 0  
mn: -1581  
mx: 1698  
 $\mu$ : -11.2  
 $\sigma$ : 23.4

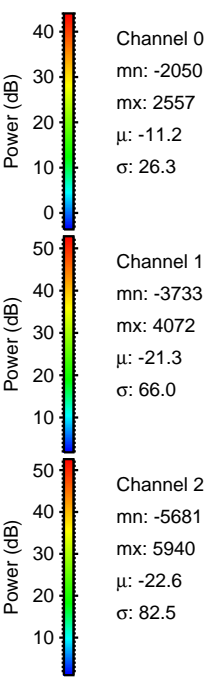
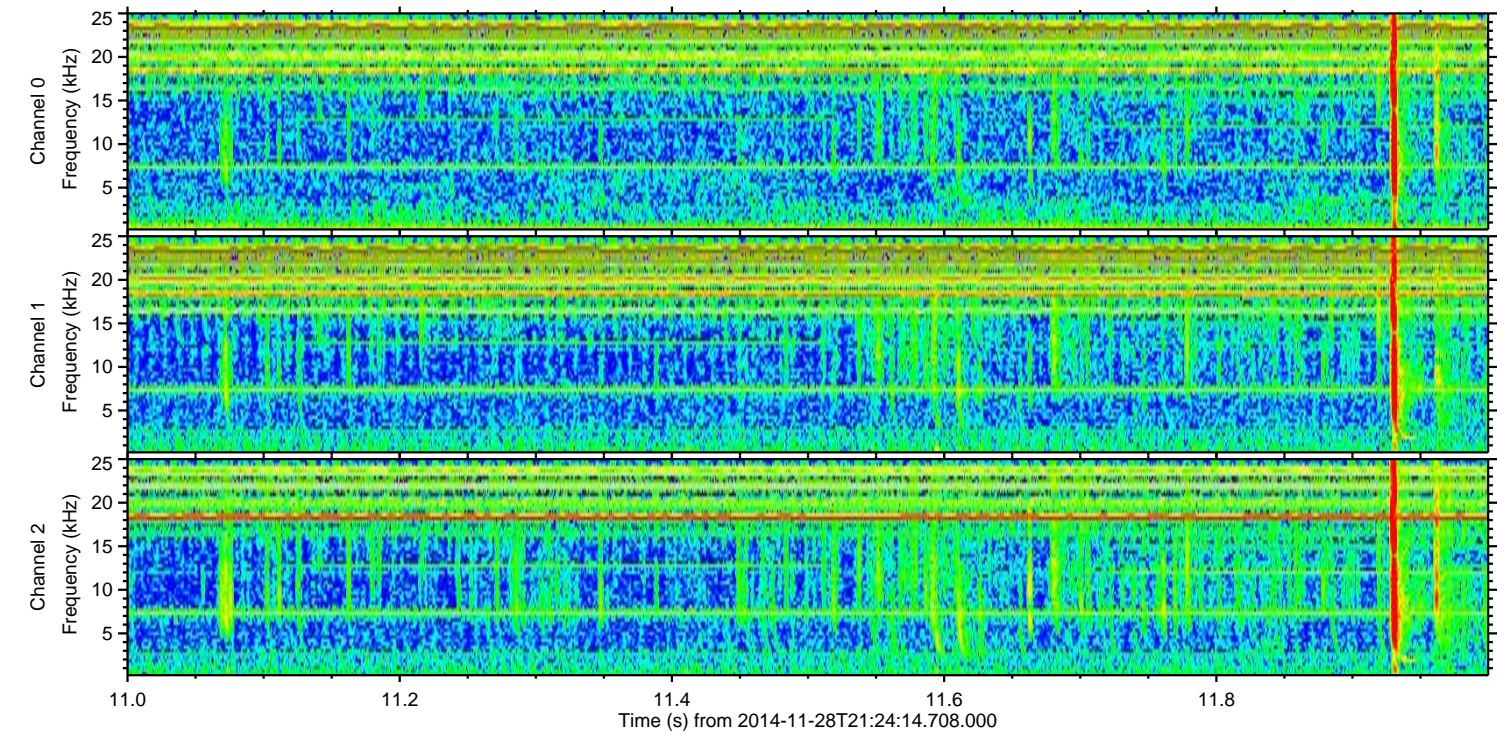
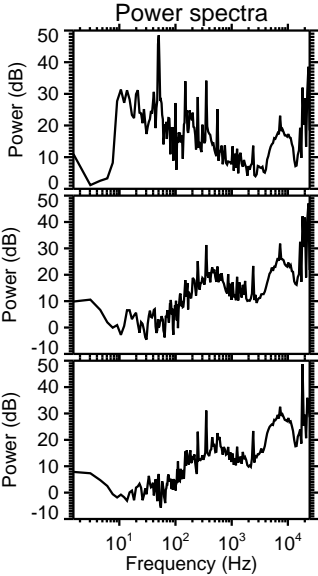
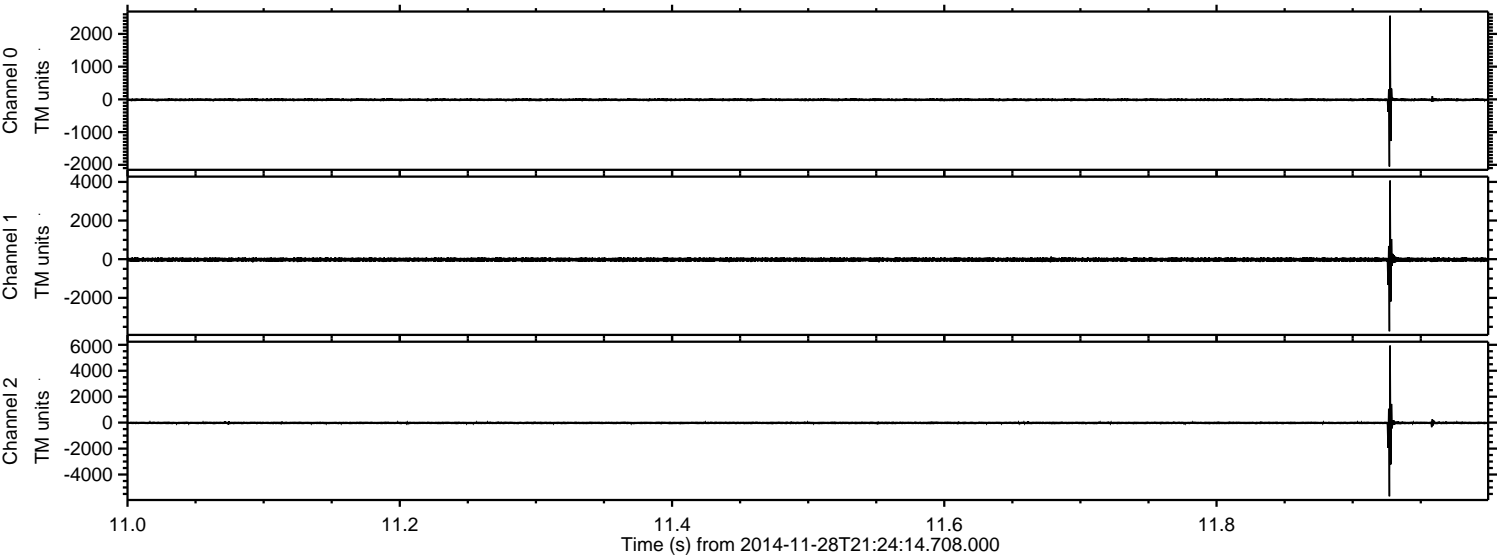
Channel 1  
mn: -1104  
mx: 854  
 $\mu$ : -21.3  
 $\sigma$ : 51.4

Channel 2  
mn: -4986  
mx: 6018  
 $\mu$ : -22.5  
 $\sigma$ : 81.4



ELMAVAN 3D WAVEFORMS (Measured data sampled at 50 kHz) 49580 packets of 144 samples from 2014-11-28T21:24:14.708.000. Part 12/143

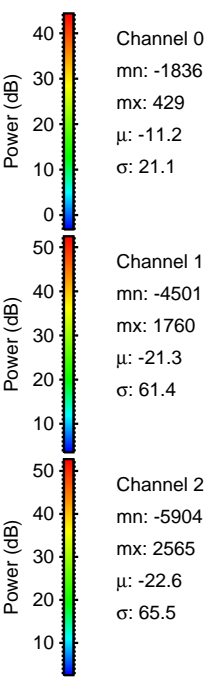
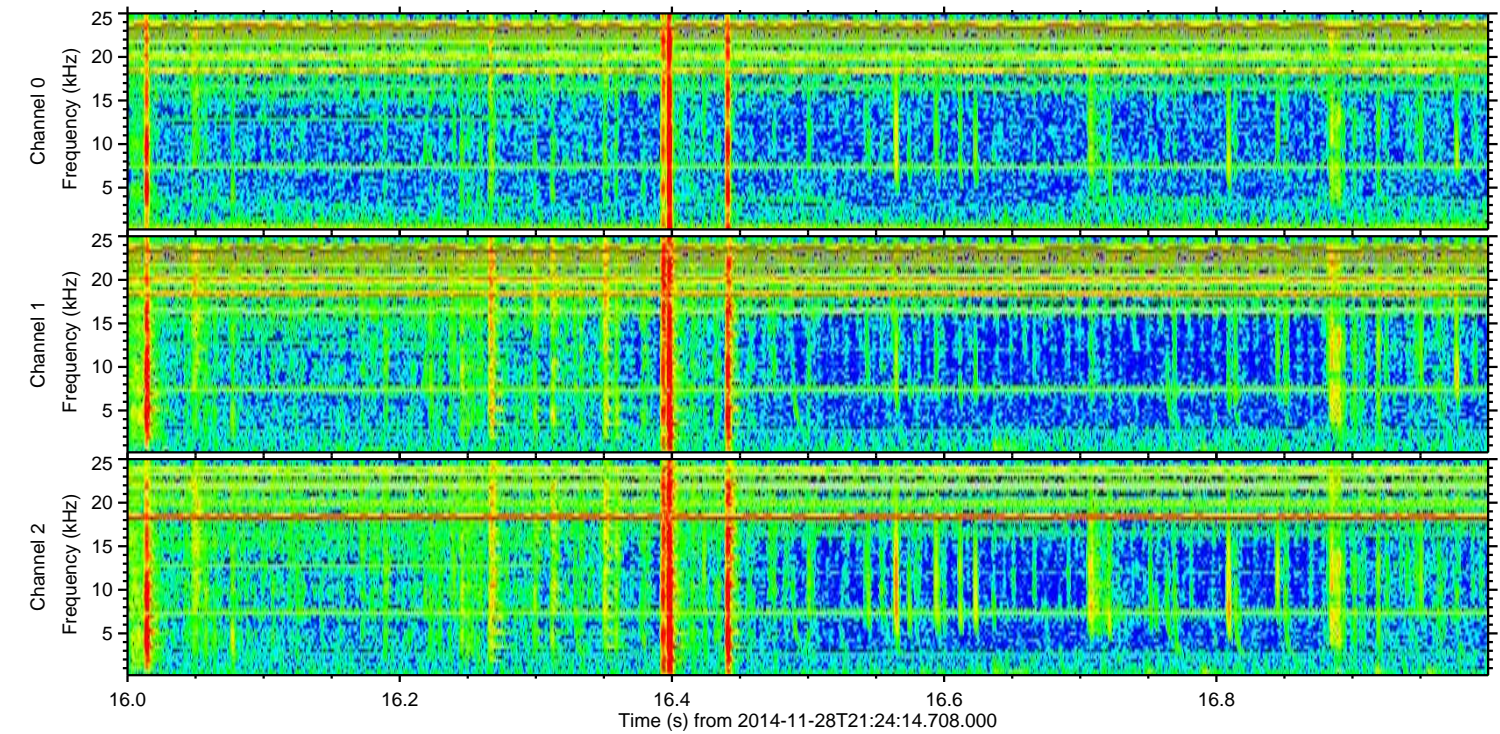
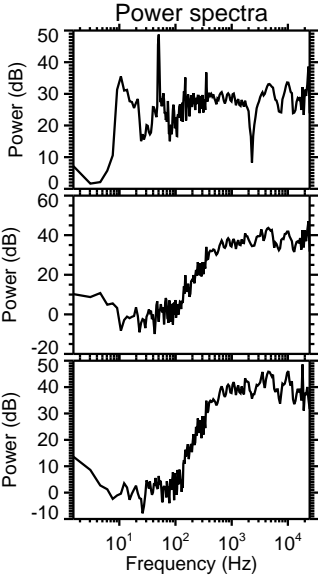
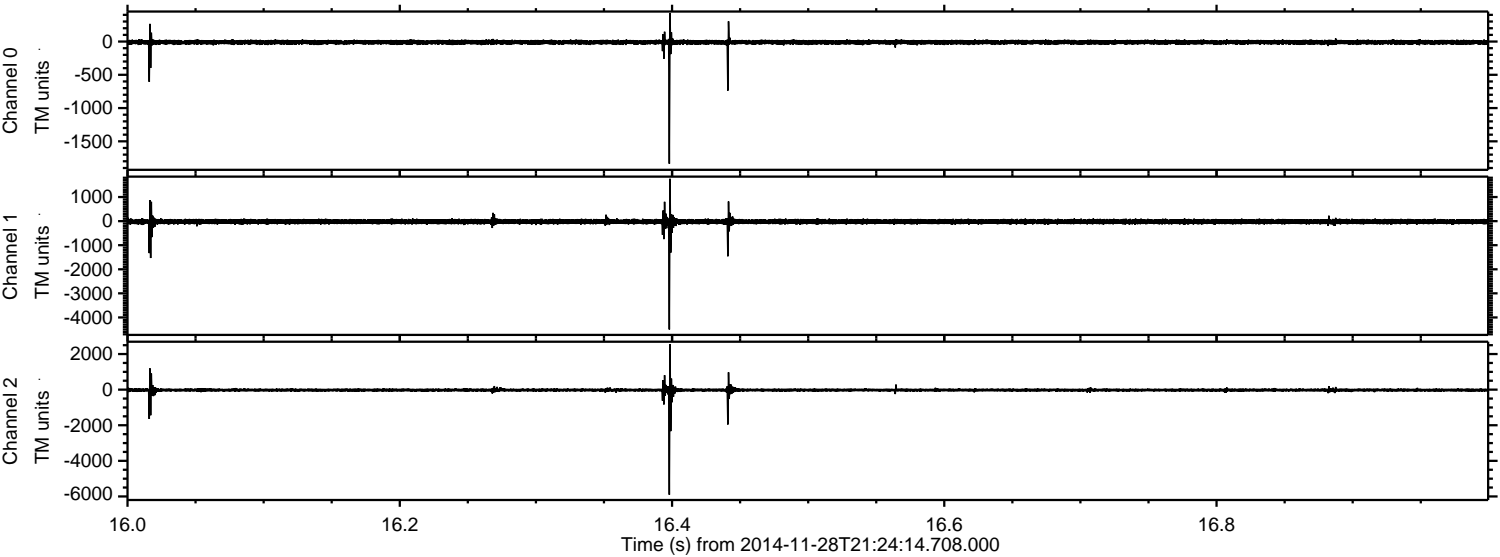
Processed Sat Nov 29 19:12:16 2014 by ELM ver.2012-10-06 from 001\_\_elm20141128\_212413\_\_dat00.bin





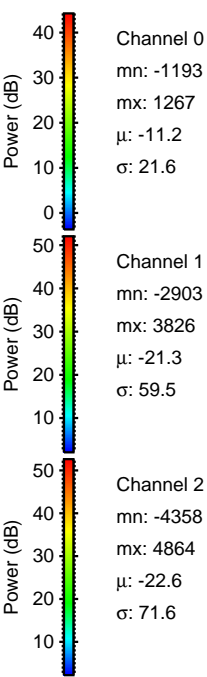
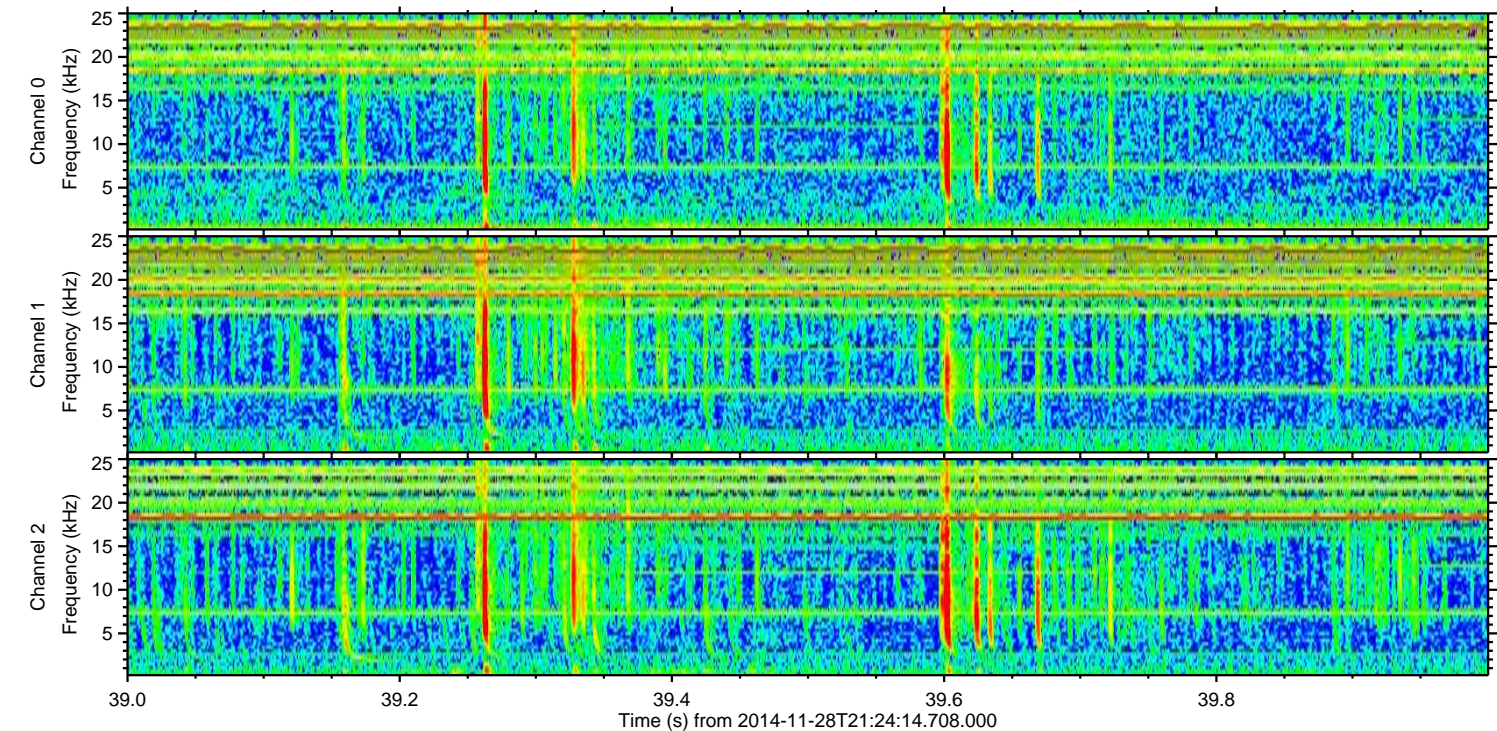
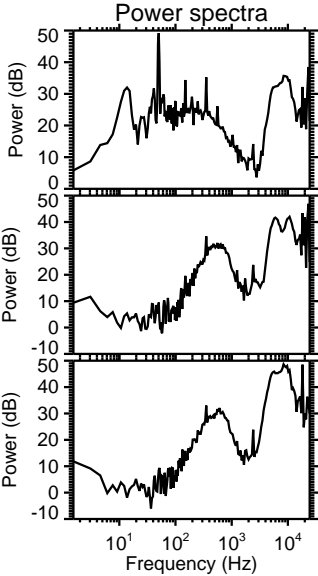
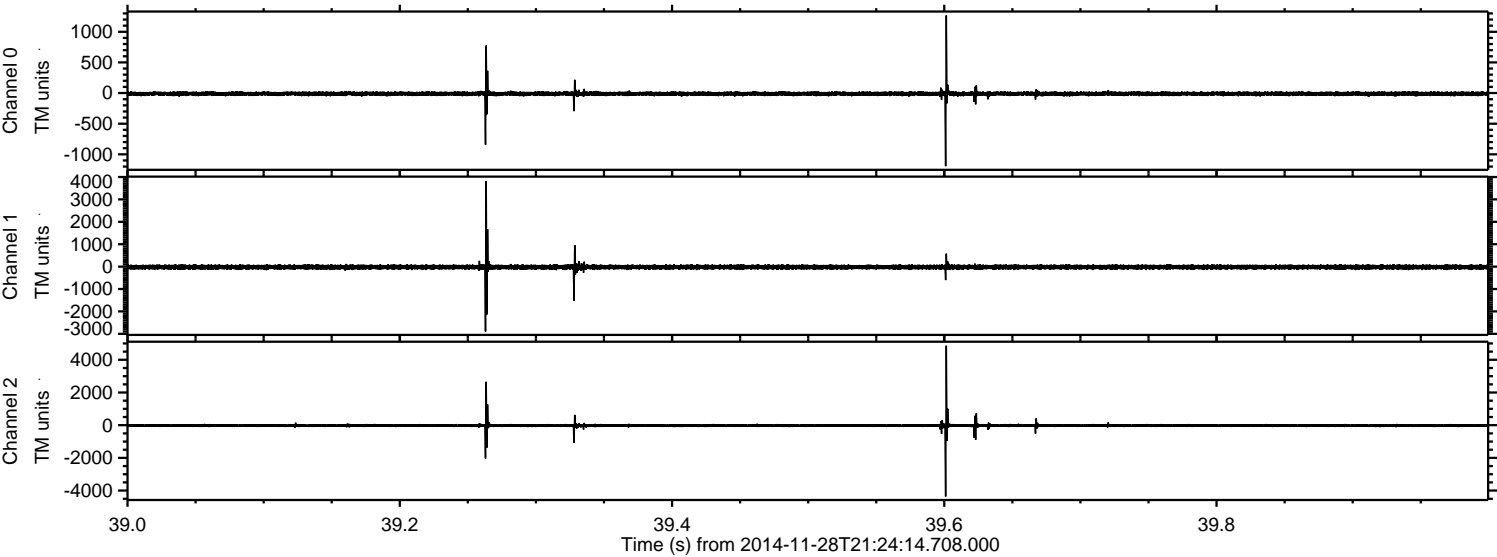
ELMAVAN 3D WAVEFORMS (Measured data sampled at 50 kHz) 49580 packets of 144 samples from 2014-11-28T21:24:14.708.000. Part 17/143

Processed Sat Nov 29 19:12:17 2014 by ELM ver.2012-10-06 from 001\_\_elm20141128\_212413\_\_dat00.bin





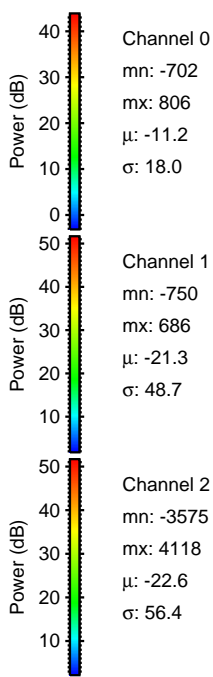
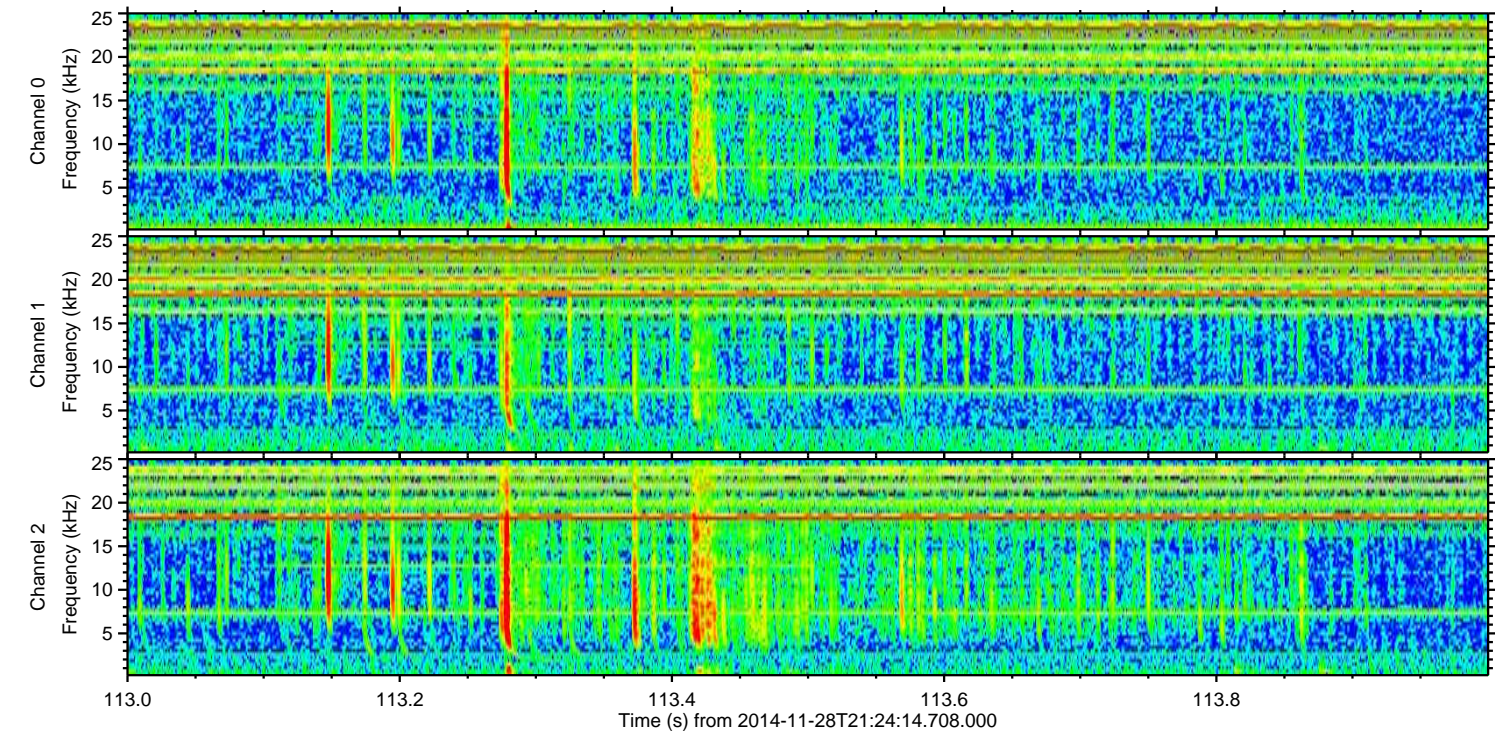
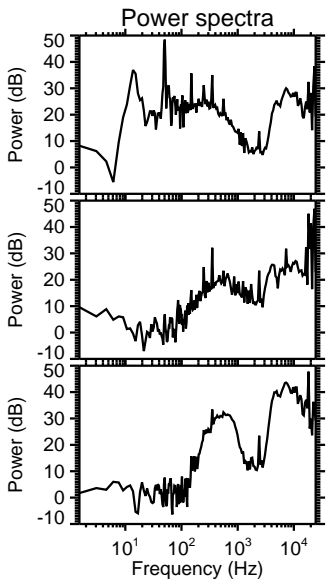
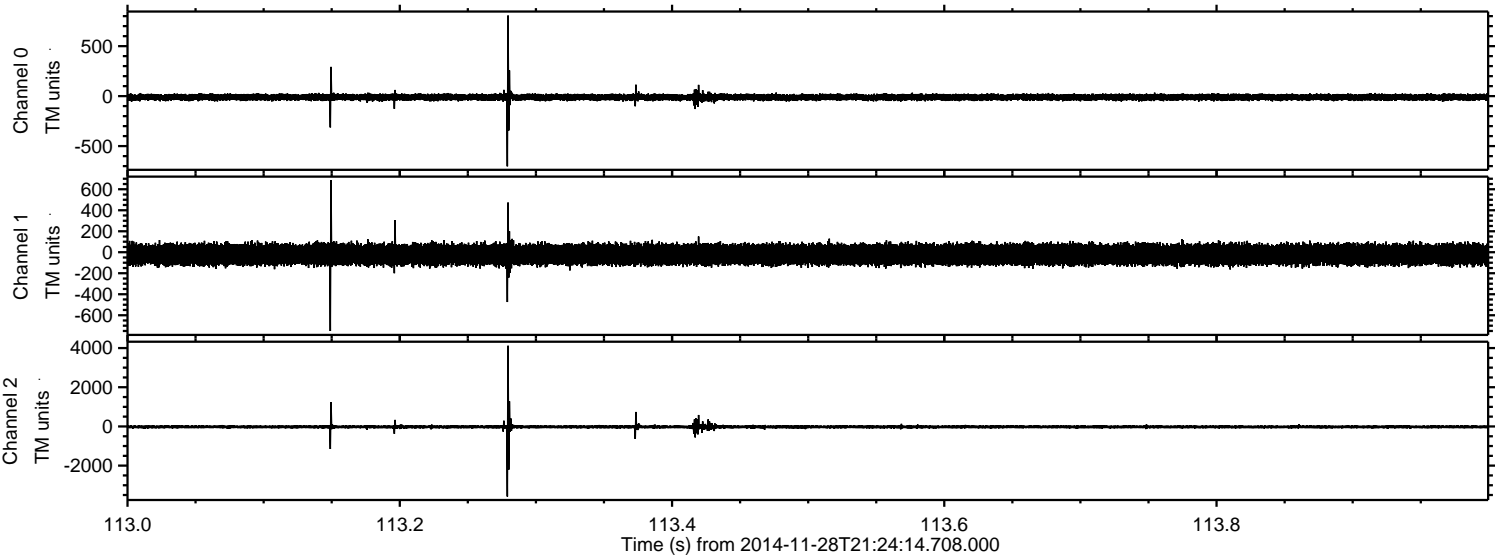
Processed Sat Nov 29 19:12:18 2014 by ELM ver.2012-10-06 from 001\_\_elm20141128\_212413\_\_dat00.bin





ELMAVAN 3D WAVEFORMS (Measured data sampled at 50 kHz) 49580 packets of 144 samples from 2014-11-28T21:24:14.708.000. Part 114/143

Processed Sat Nov 29 19:12:19 2014 by ELM ver.2012-10-06 from 001\_\_elm20141128\_212413\_\_dat00.bin



Channel 0  
mn: -702  
mx: 806  
 $\mu$ : -11.2  
 $\sigma$ : 18.0

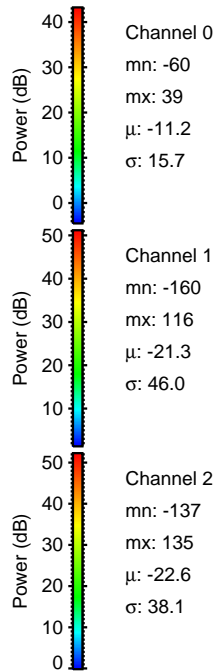
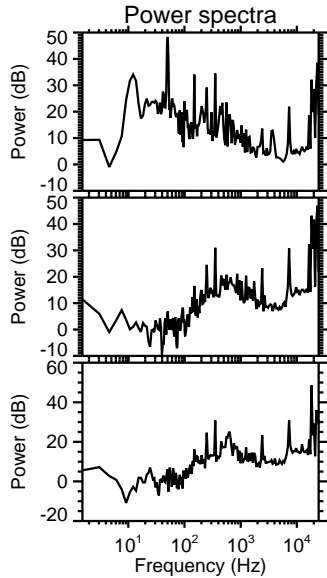
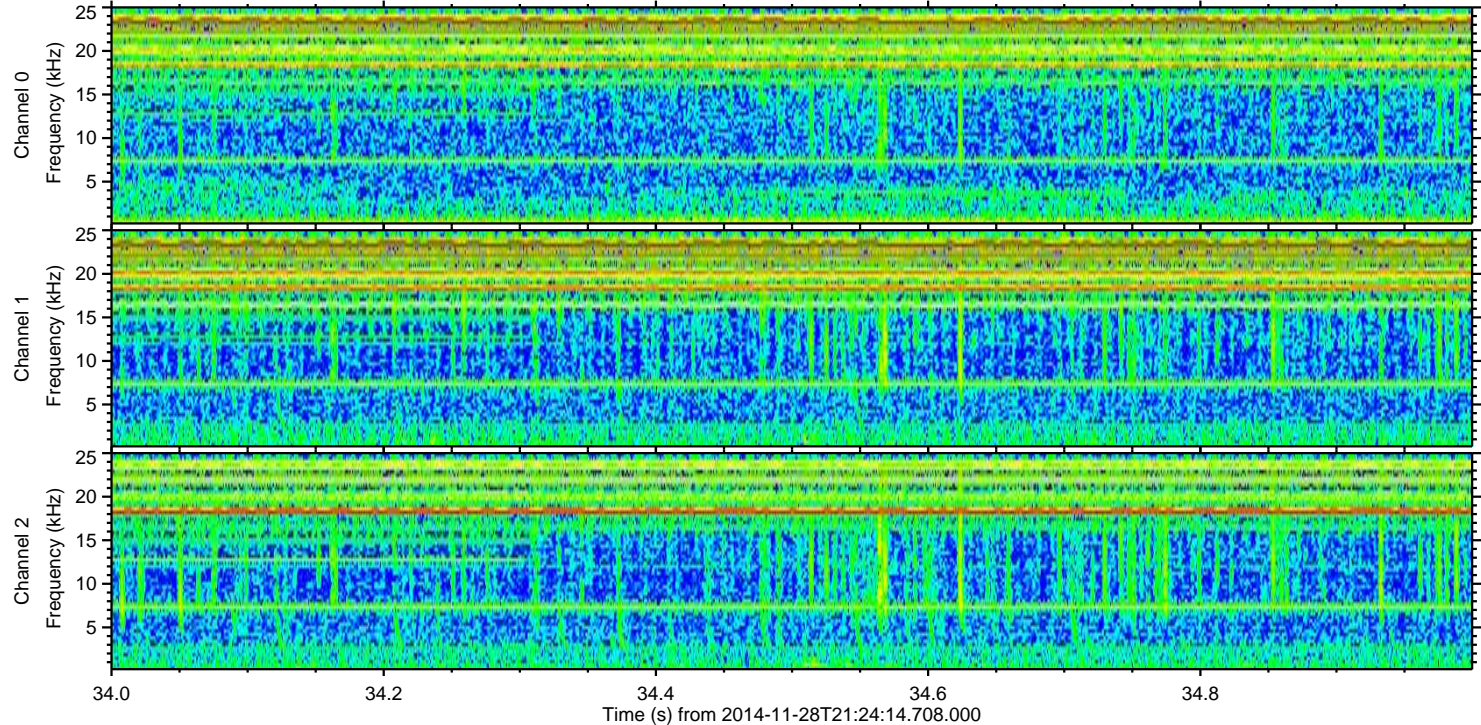
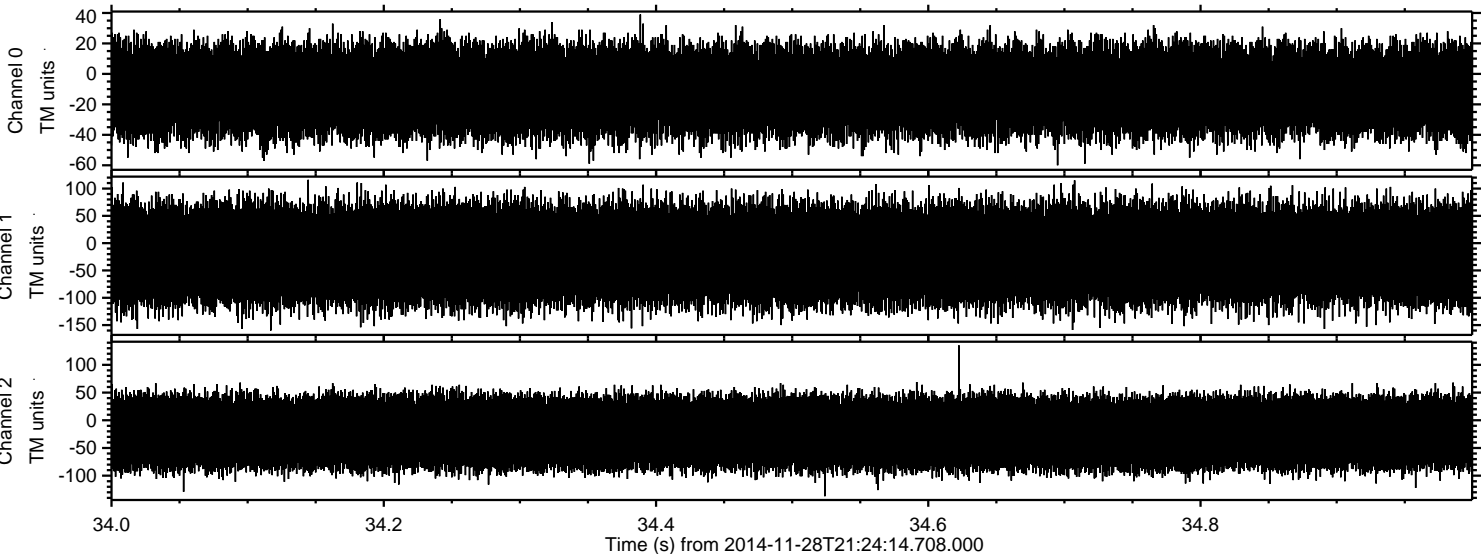
Channel 1  
mn: -750  
mx: 686  
 $\mu$ : -21.3  
 $\sigma$ : 48.7

Channel 2  
mn: -3575  
mx: 4118  
 $\mu$ : -22.6  
 $\sigma$ : 56.4



ELMAVAN 3D WAVEFORMS (Measured data sampled at 50 kHz) 49580 packets of 144 samples from 2014-11-28T21:24:14.708.000. Part 35/143

Processed Sat Nov 29 19:12:20 2014 by ELM ver.2012-10-06 from 001\_\_elm20141128\_212413\_\_dat00.bin



Channel 0  
mn: -60  
mx: 39  
 $\mu$ : -11.2  
 $\sigma$ : 15.7

Channel 1  
mn: -160  
mx: 116  
 $\mu$ : -21.3  
 $\sigma$ : 46.0

Channel 2  
mn: -137  
mx: 135  
 $\mu$ : -22.6  
 $\sigma$ : 38.1