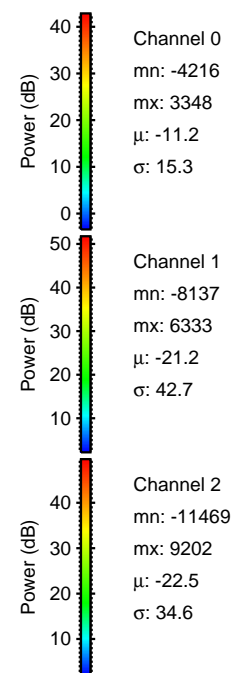
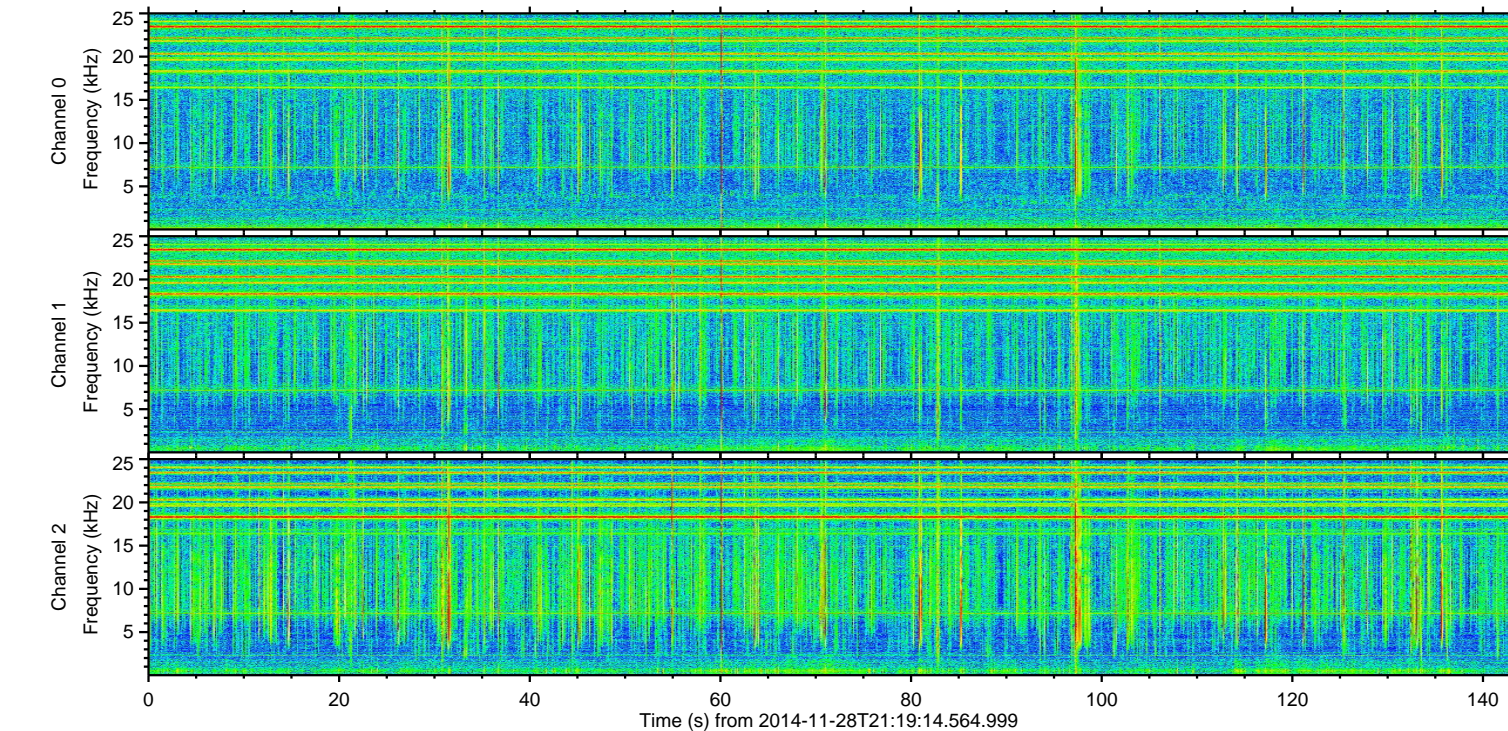
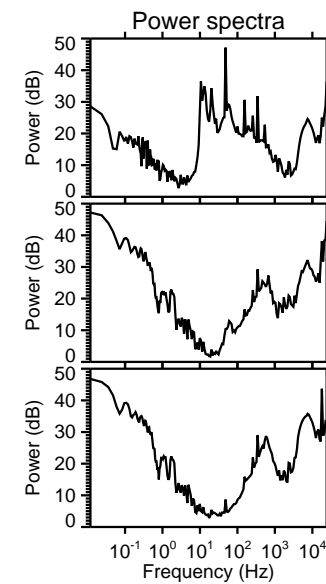
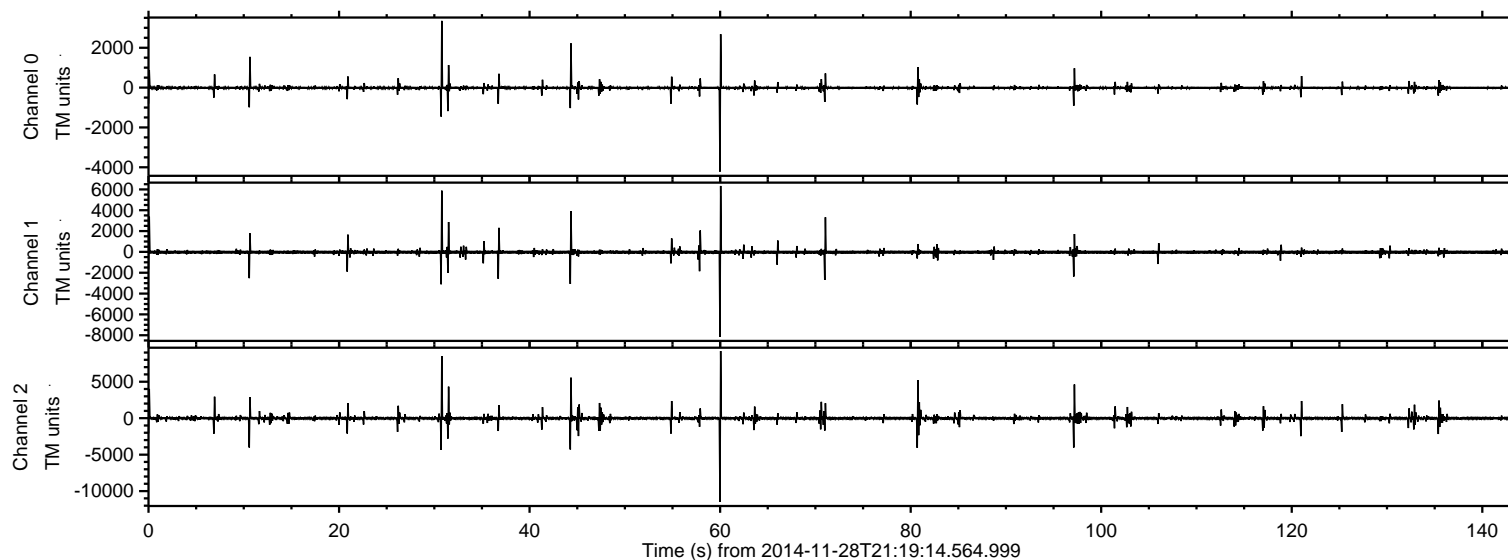


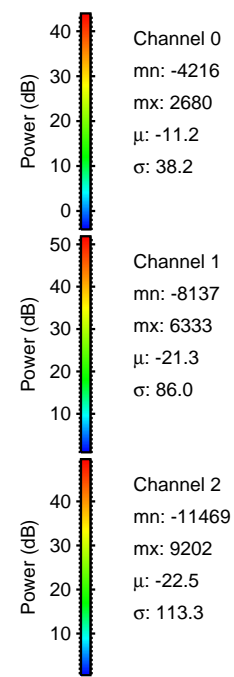
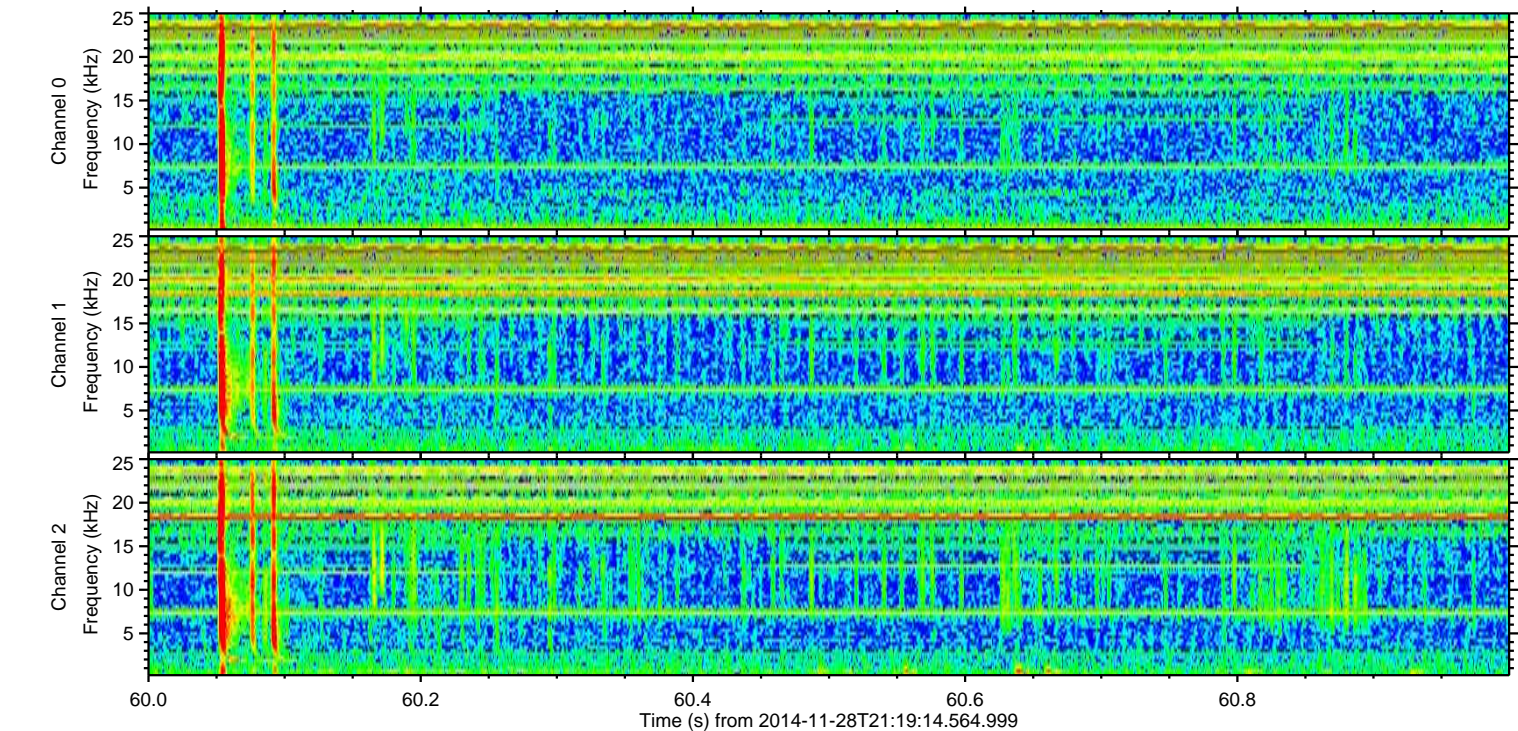
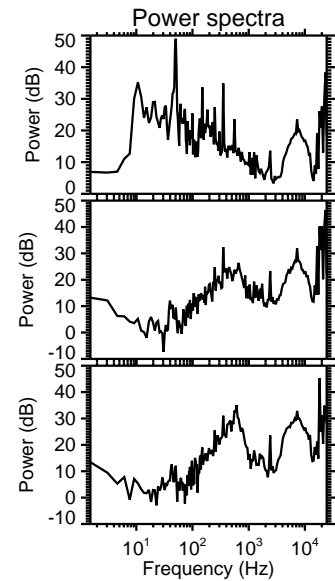
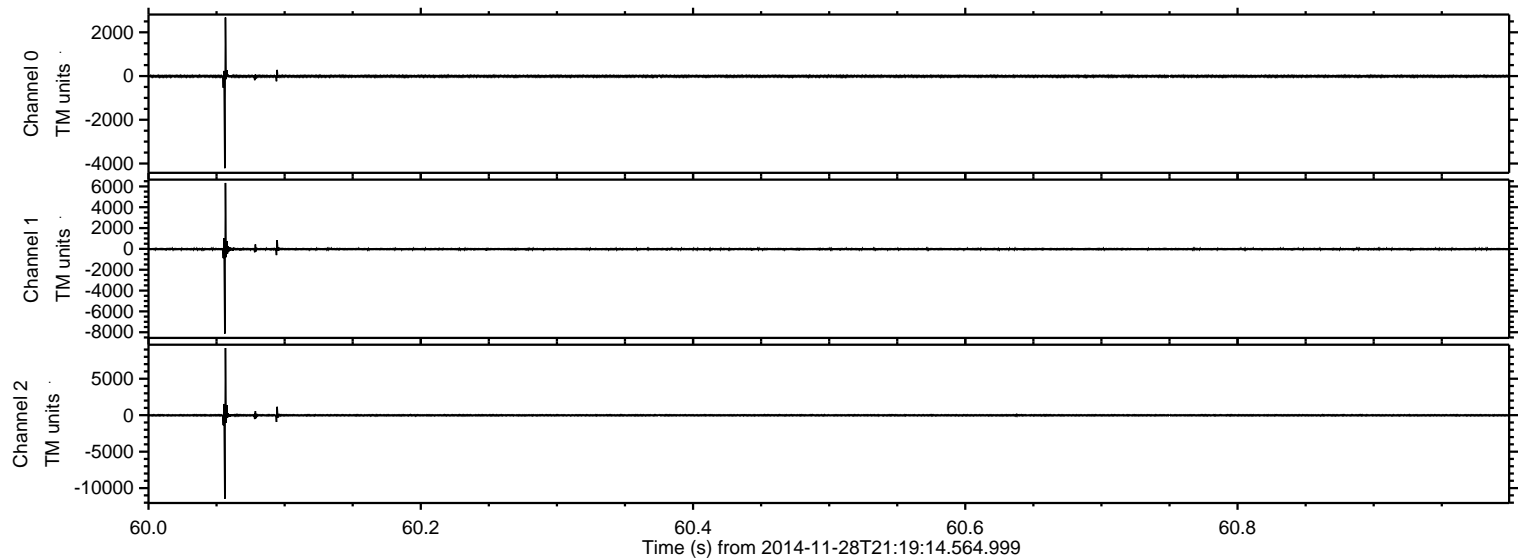
ELMAVAN 3D WAVEFORMS (Measured data sampled at 50 kHz) 49590 packets of 144 samples from 2014-11-28T21:19:14.564.999.

Processed Sat Nov 29 19:05:18 2014 by ELM ver.2012-10-06 from 001__elm20141128_211913__dat00.bin



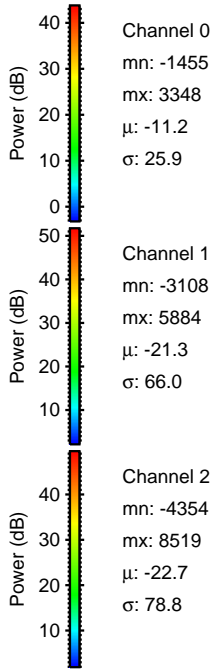
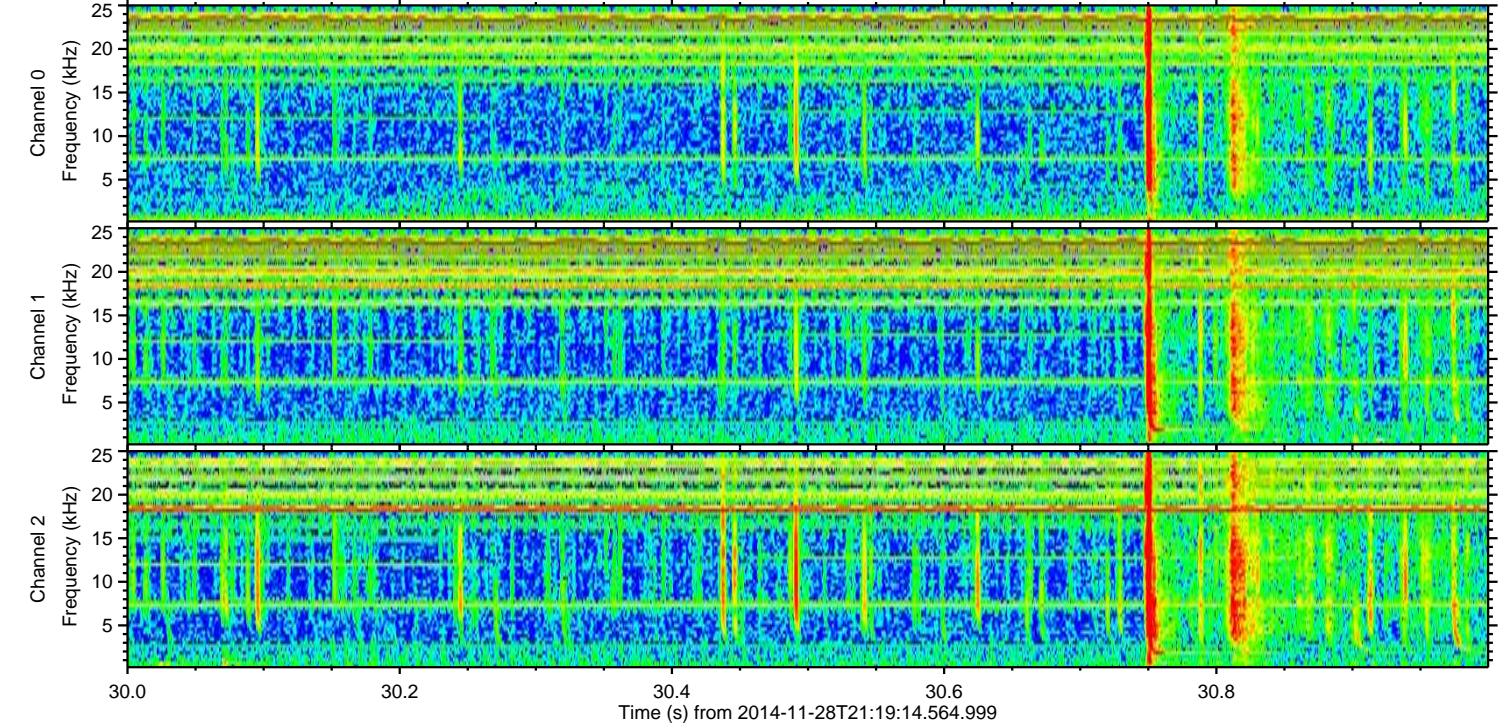
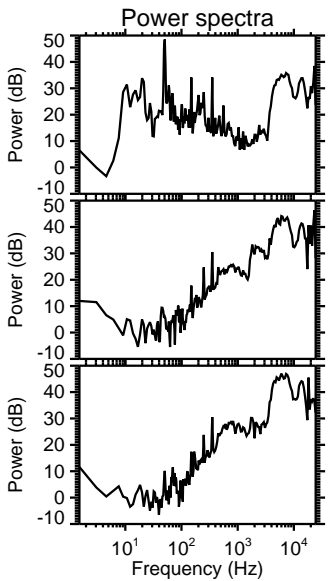
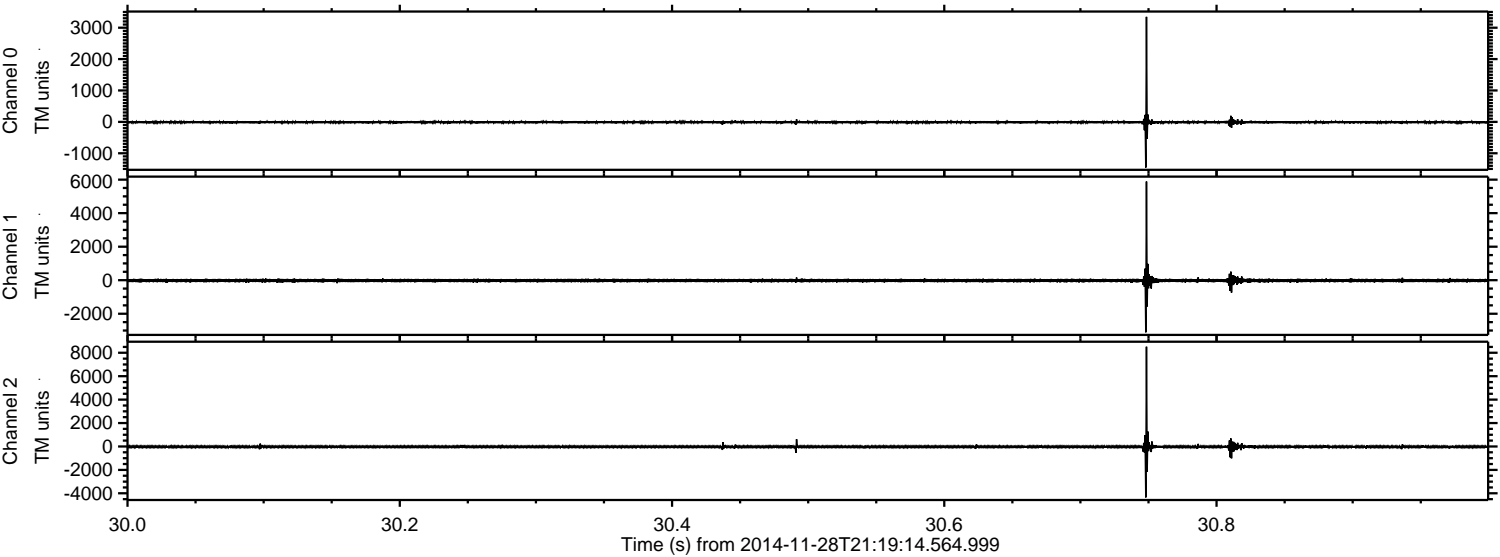
ELMAVAN 3D WAVEFORMS (Measured data sampled at 50 kHz) 49590 packets of 144 samples from 2014-11-28T21:19:14.564.999. Part 61/143

Processed Sat Nov 29 19:05:34 2014 by ELM ver.2012-10-06 from 001__elm20141128_211913__dat00.bin



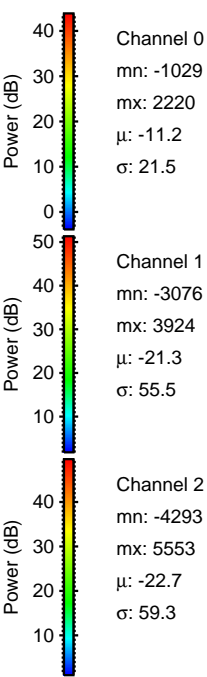
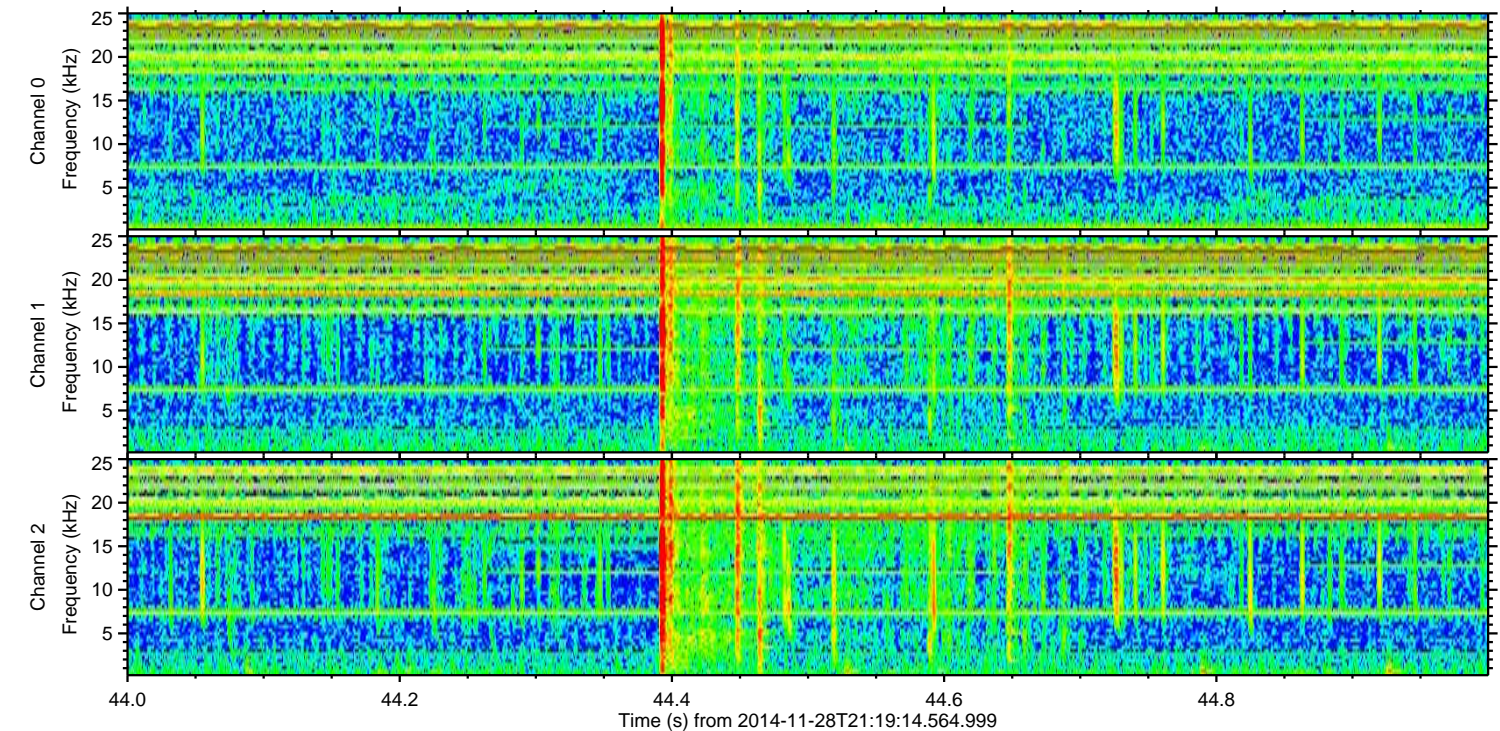
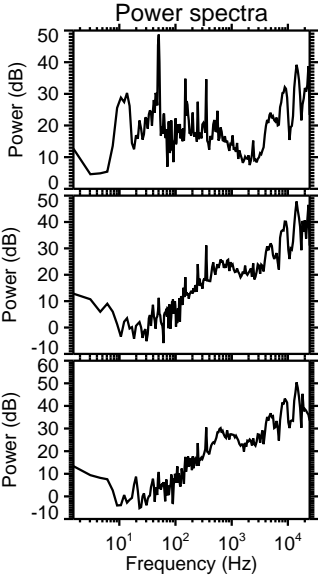
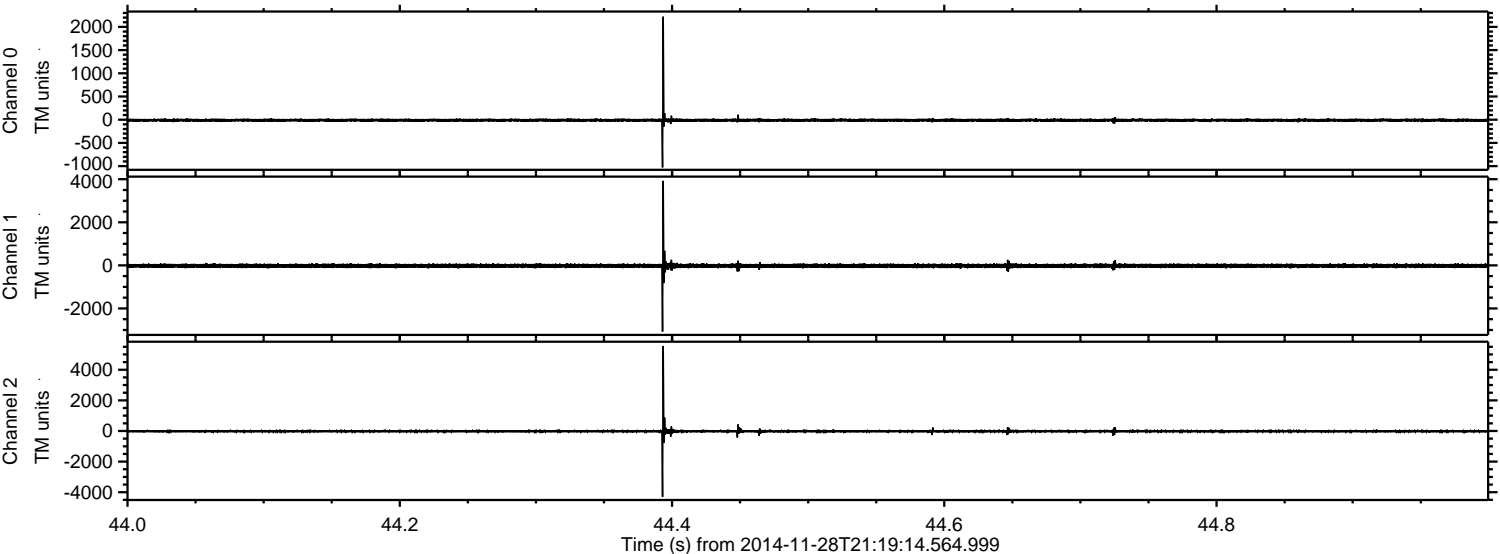
ELMAVAN 3D WAVEFORMS (Measured data sampled at 50 kHz) 49590 packets of 144 samples from 2014-11-28T21:19:14.564.999. Part 31/143

Processed Sat Nov 29 19:05:35 2014 by ELM ver.2012-10-06 from 001__elm20141128_211913__dat00.bin



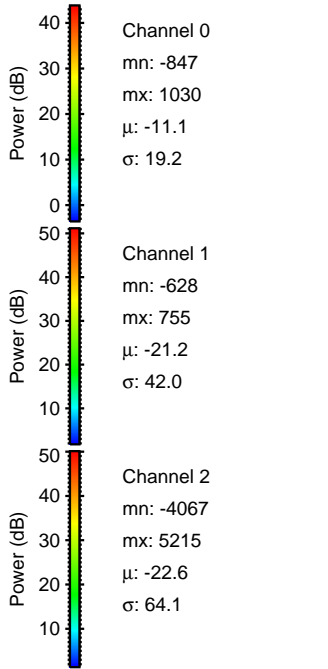
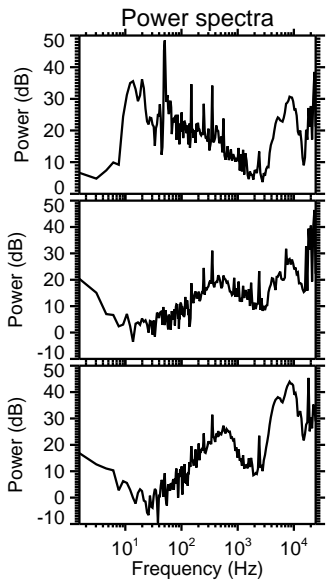
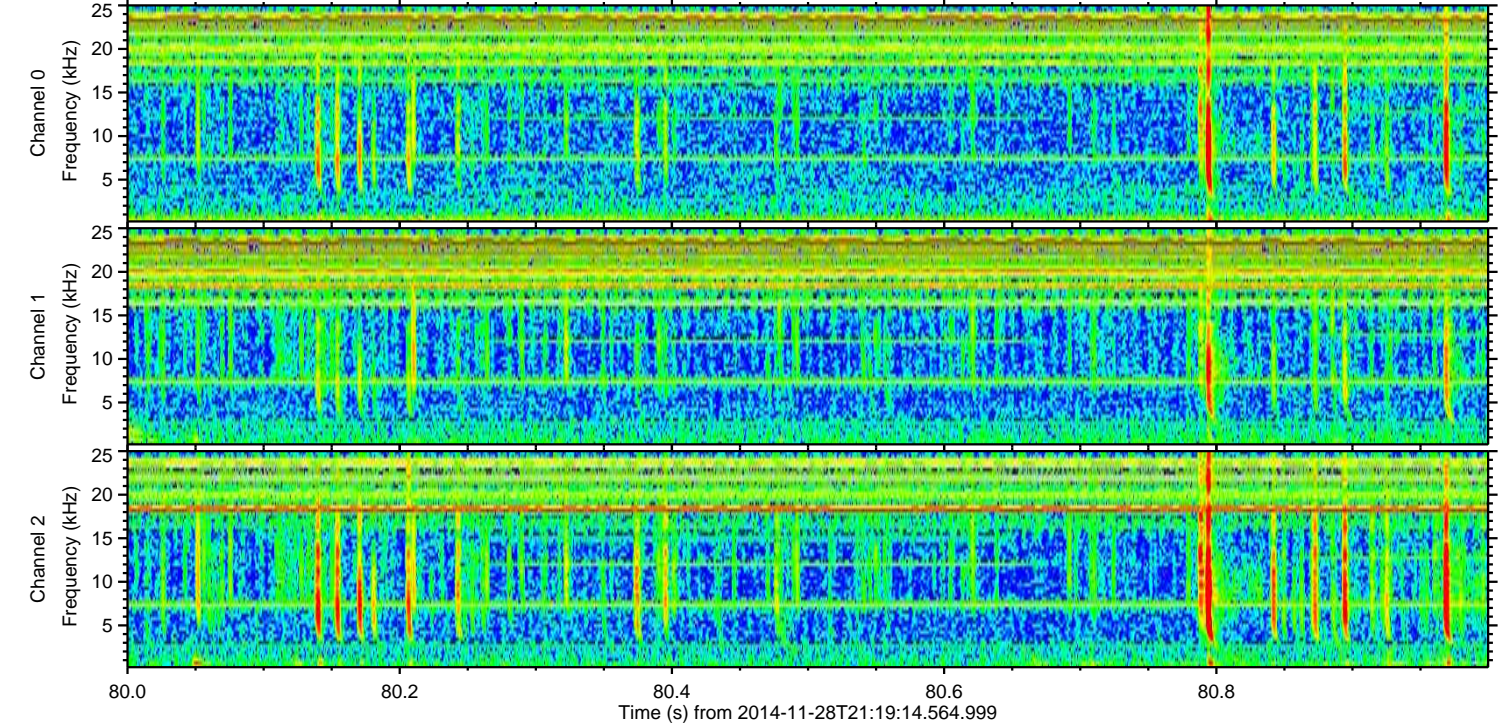
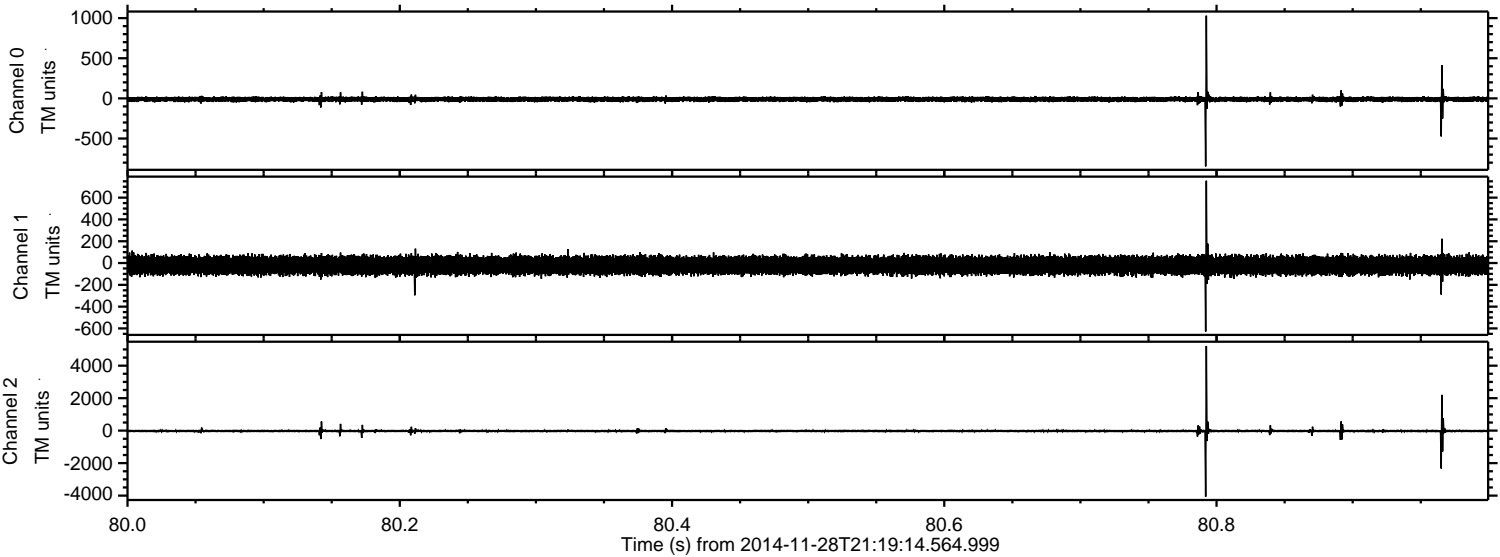
ELMAVAN 3D WAVEFORMS (Measured data sampled at 50 kHz) 49590 packets of 144 samples from 2014-11-28T21:19:14.564.999. Part 45/143

Processed Sat Nov 29 19:05:36 2014 by ELM ver.2012-10-06 from 001__elm20141128_211913__dat00.bin



ELMAVAN 3D WAVEFORMS (Measured data sampled at 50 kHz) 49590 packets of 144 samples from 2014-11-28T21:19:14.564.999. Part 81/143

Processed Sat Nov 29 19:05:37 2014 by ELM ver.2012-10-06 from 001__elm20141128_211913__dat00.bin



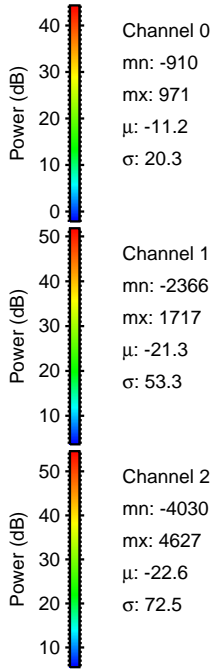
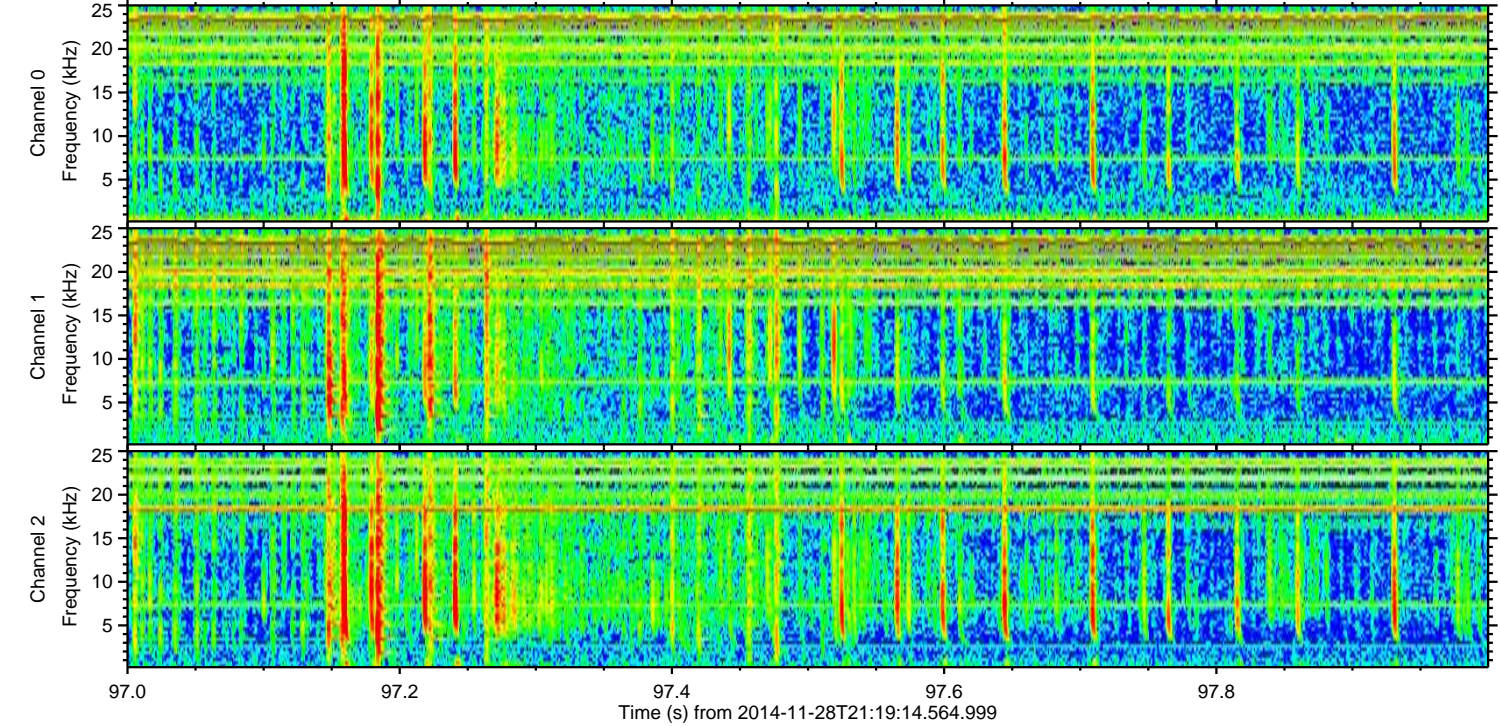
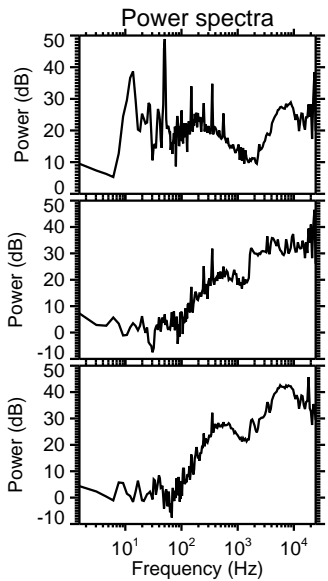
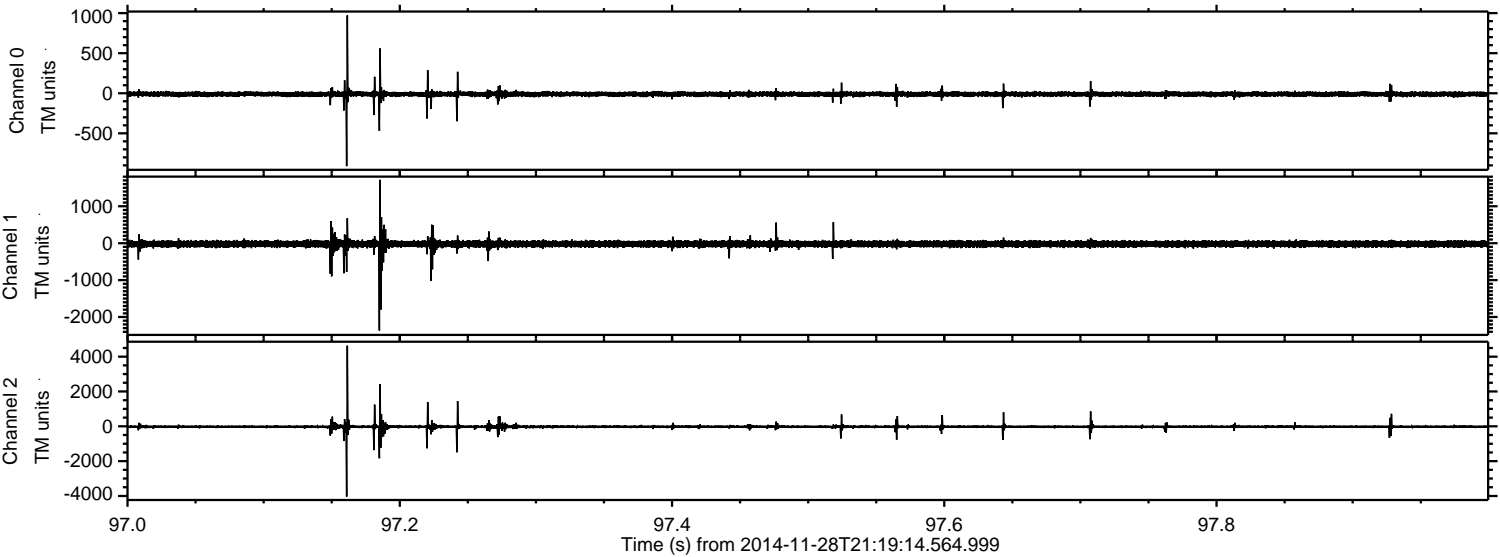
Channel 0
mn: -847
mx: 1030
 μ : -11.1
 σ : 19.2

Channel 1
mn: -628
mx: 755
 μ : -21.2
 σ : 42.0

Channel 2
mn: -4067
mx: 5215
 μ : -22.6
 σ : 64.1

ELMAVAN 3D WAVEFORMS (Measured data sampled at 50 kHz) 49590 packets of 144 samples from 2014-11-28T21:19:14.564.999. Part 98/143

Processed Sat Nov 29 19:05:38 2014 by ELM ver.2012-10-06 from 001__elm20141128_211913__dat00.bin



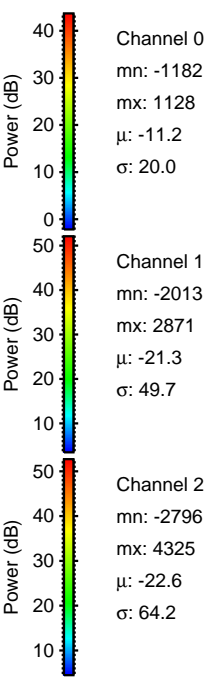
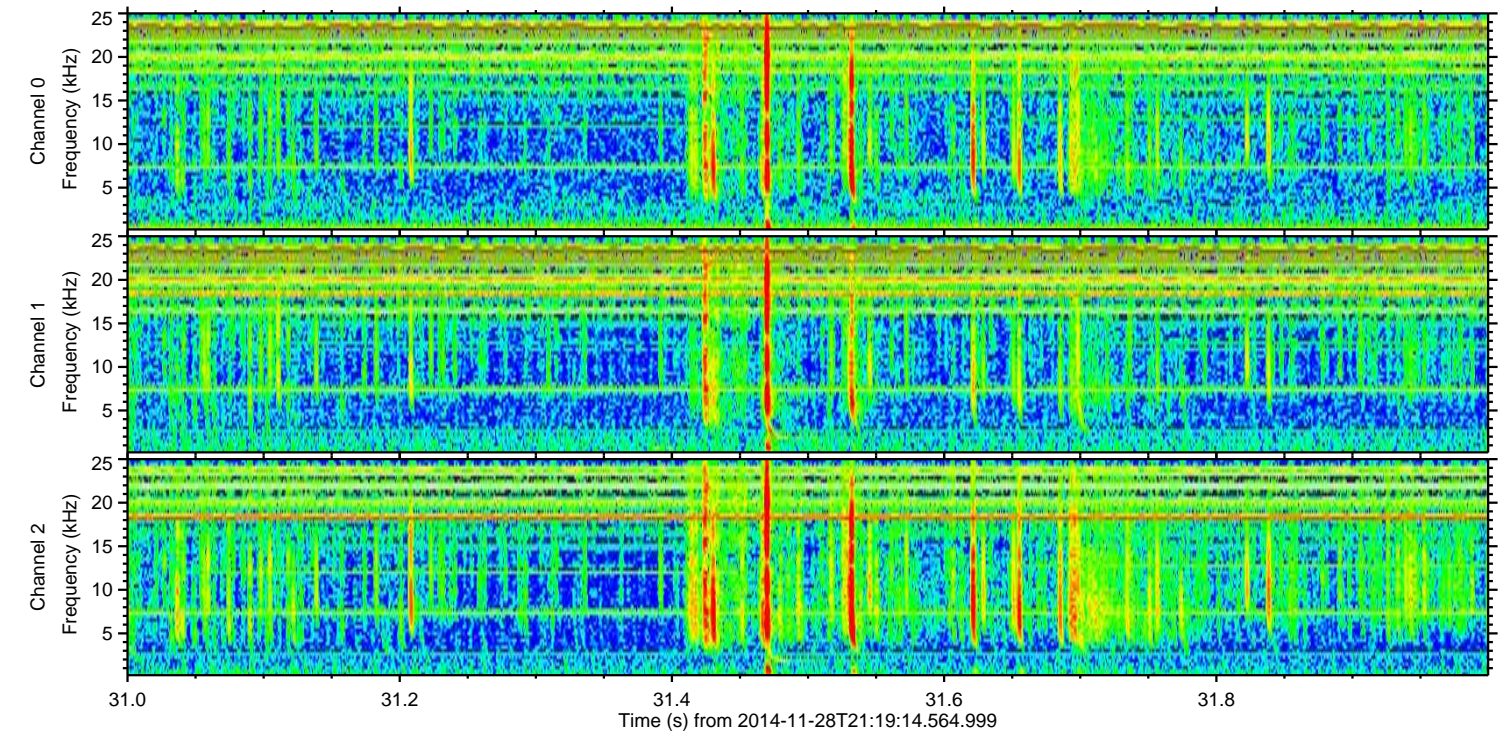
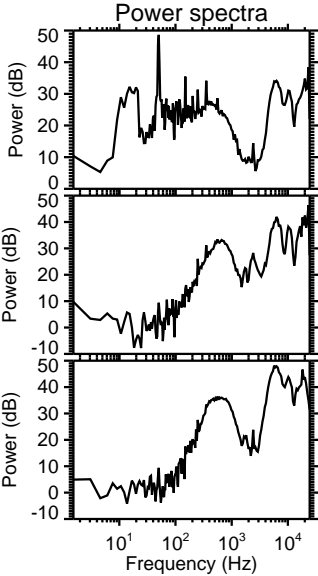
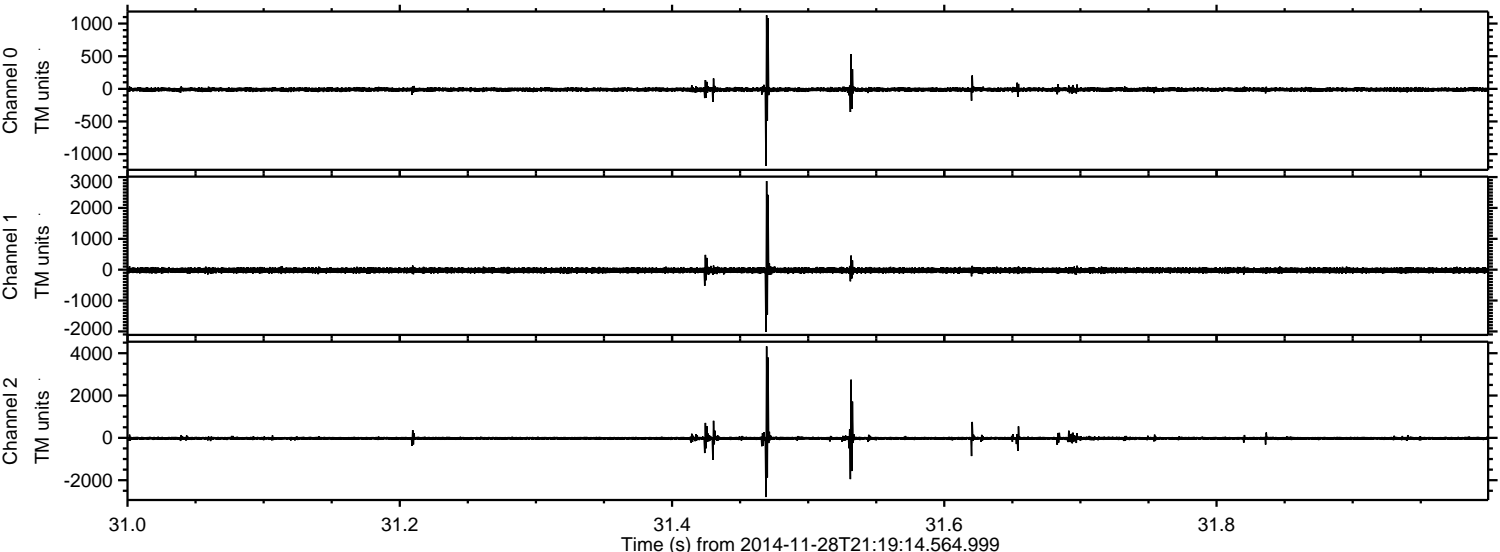
Channel 0
mn: -910
mx: 971
 μ : -11.2
 σ : 20.3

Channel 1
mn: -2366
mx: 1717
 μ : -21.3
 σ : 53.3

Channel 2
mn: -4030
mx: 4627
 μ : -22.6
 σ : 72.5

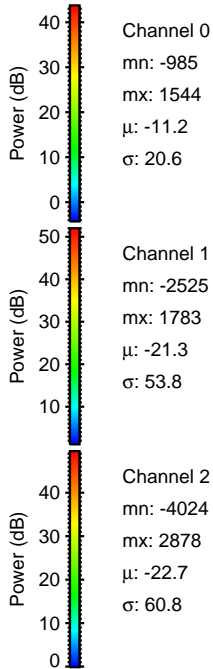
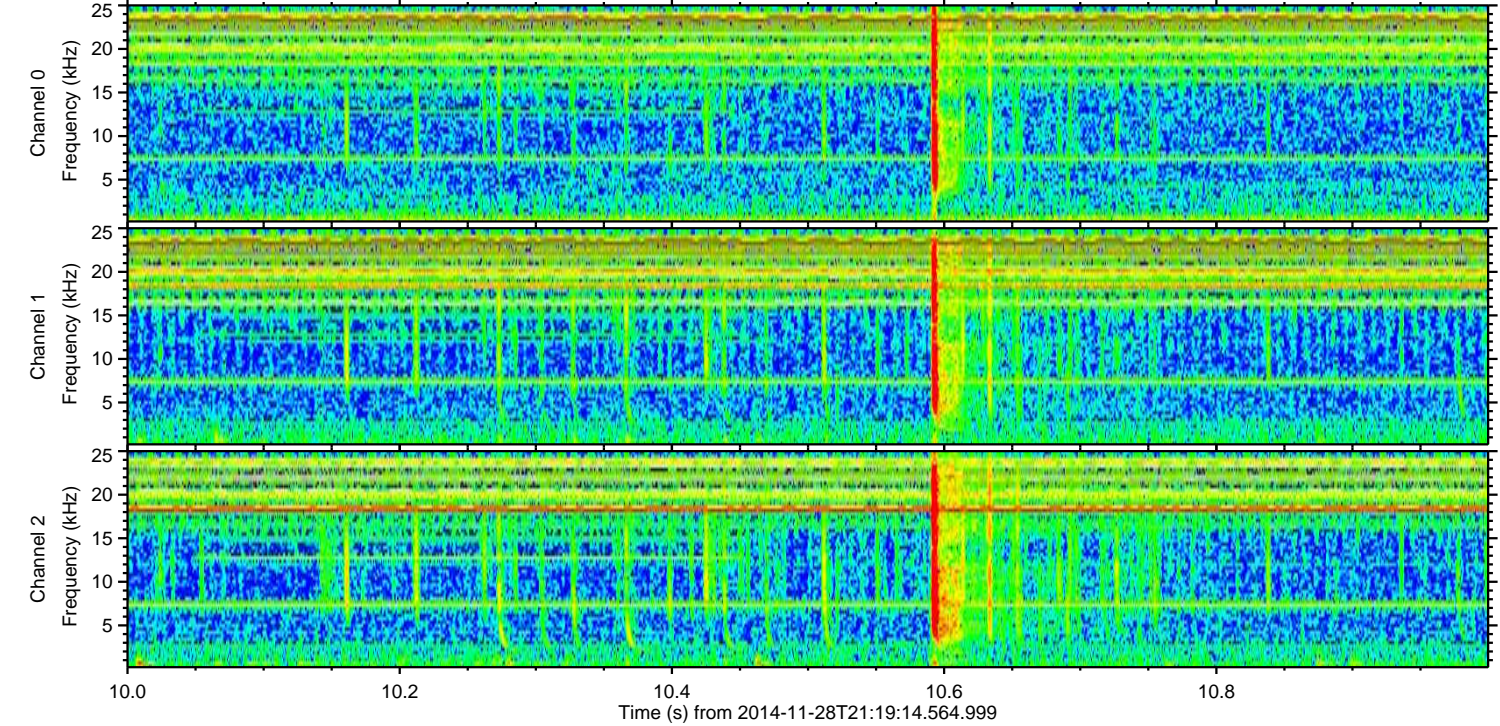
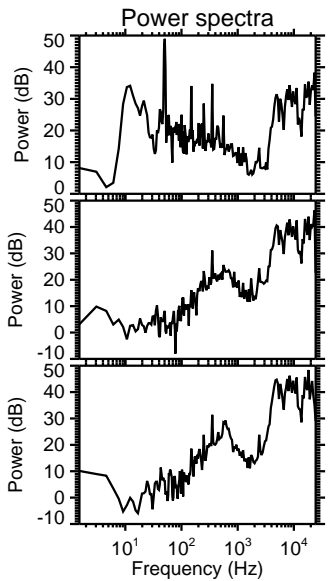
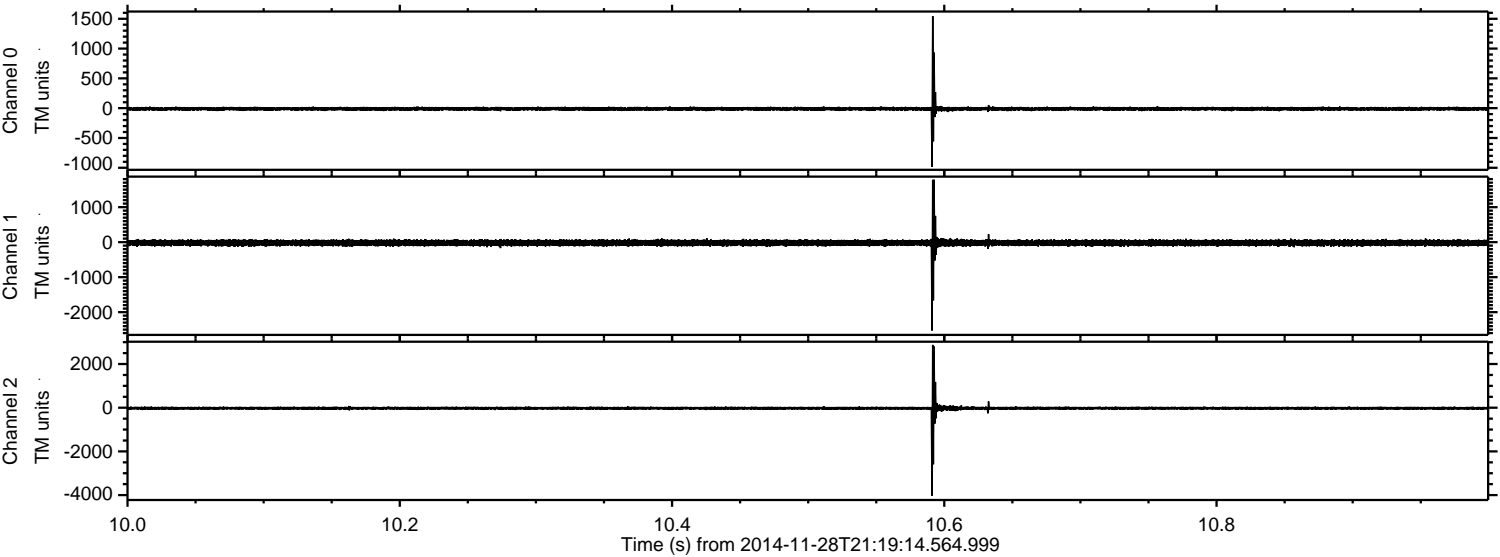
ELMAVAN 3D WAVEFORMS (Measured data sampled at 50 kHz) 49590 packets of 144 samples from 2014-11-28T21:19:14.564.999. Part 32/143

Processed Sat Nov 29 19:05:39 2014 by ELM ver.2012-10-06 from 001__elm20141128_211913__dat00.bin



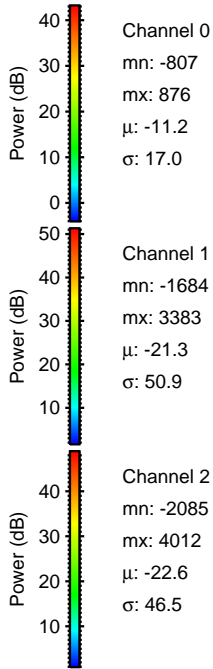
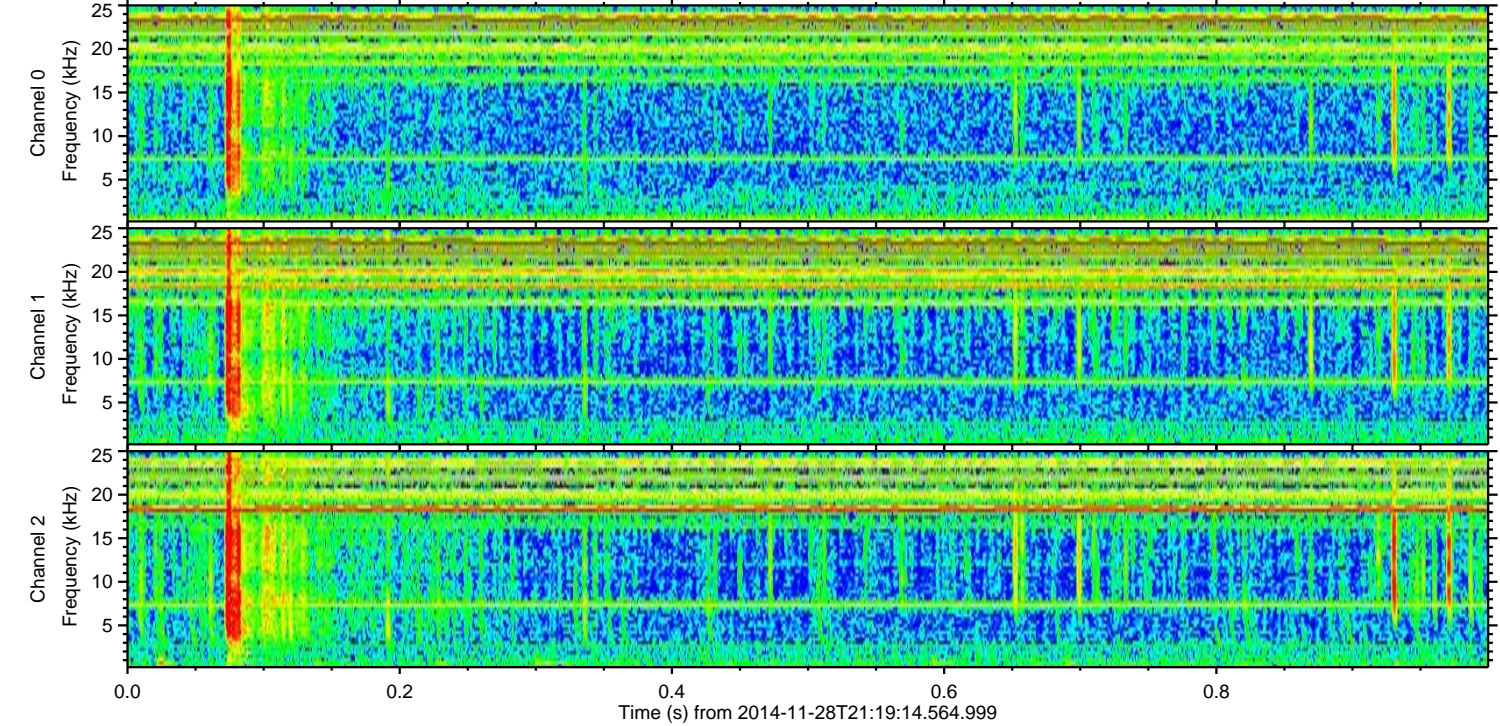
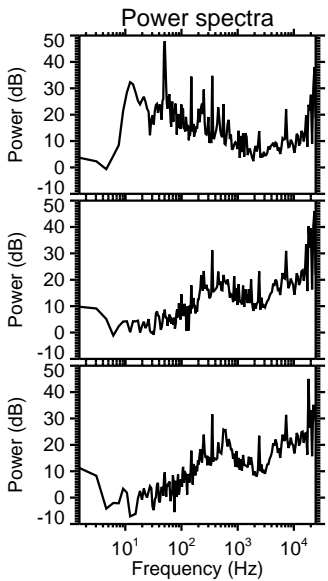
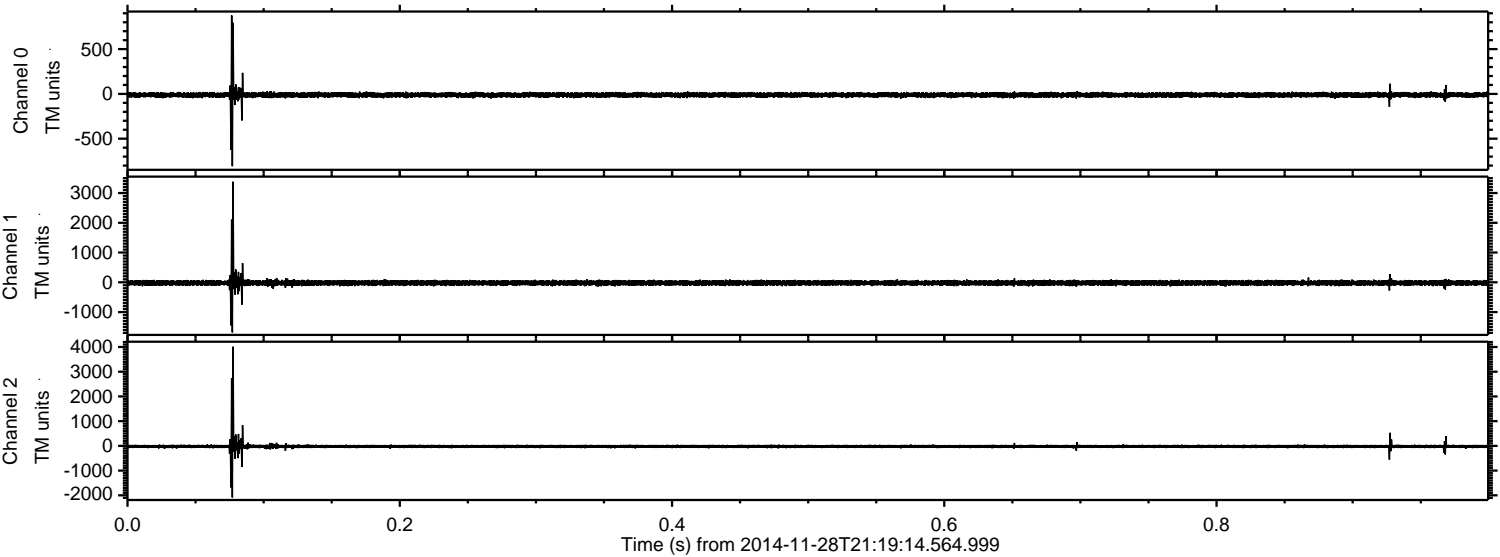
ELMAVAN 3D WAVEFORMS (Measured data sampled at 50 kHz) 49590 packets of 144 samples from 2014-11-28T21:19:14.564.999. Part 11/143

Processed Sat Nov 29 19:05:40 2014 by ELM ver.2012-10-06 from 001__elm20141128_211913__dat00.bin



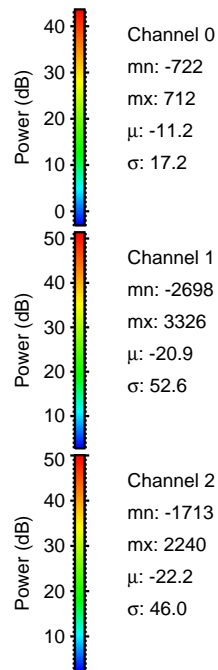
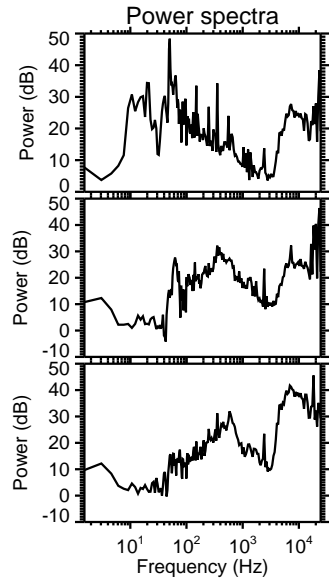
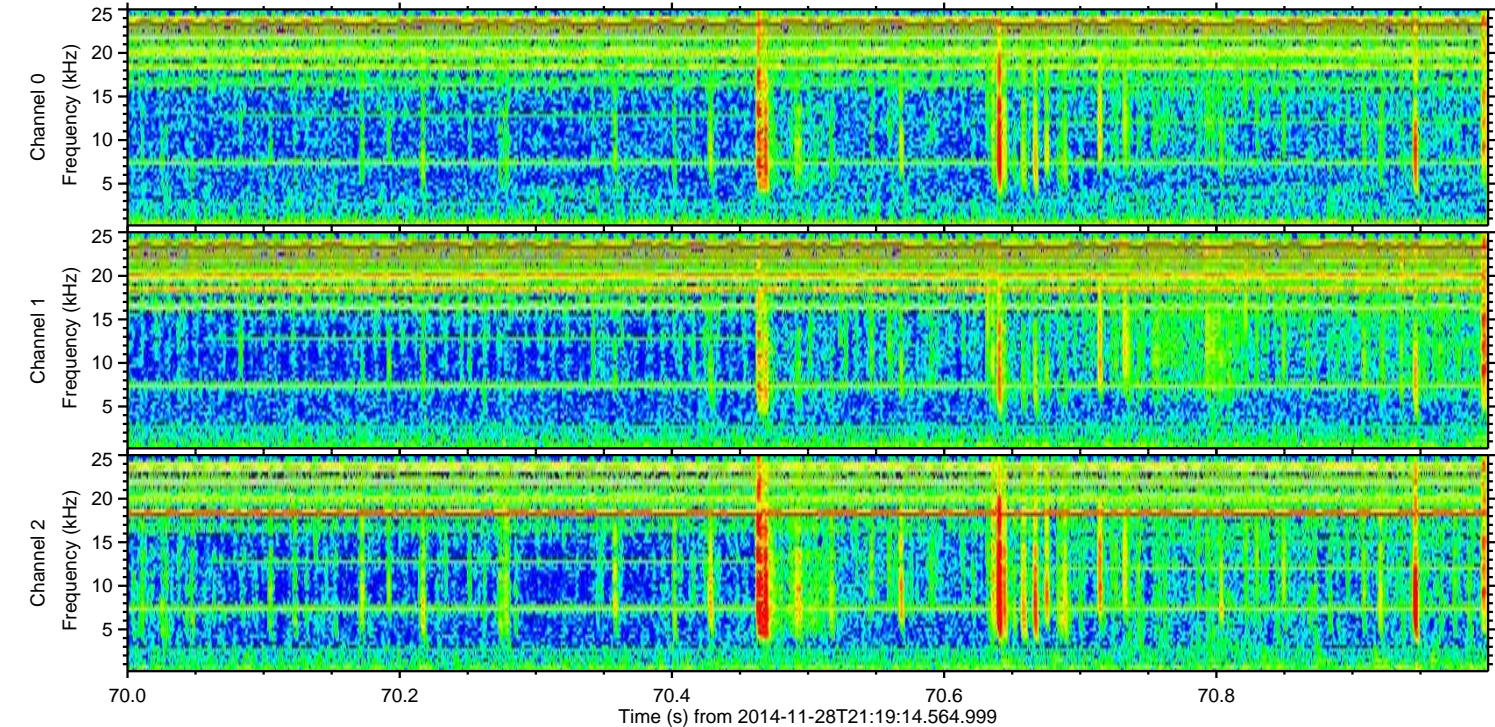
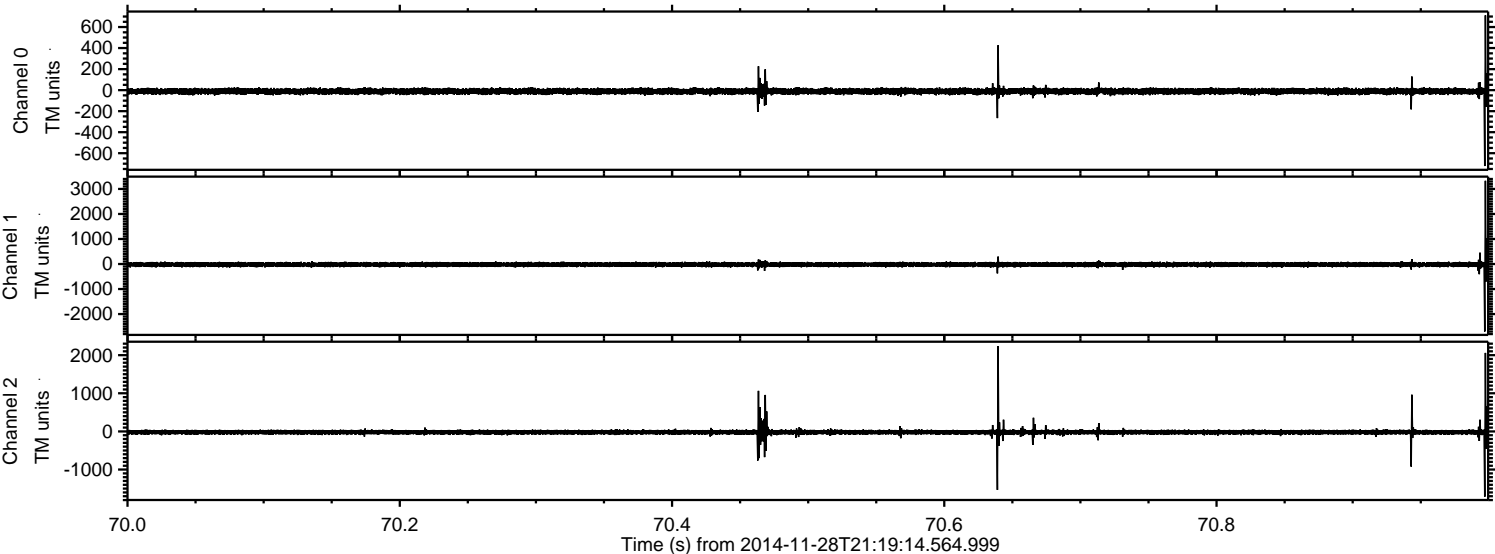
ELMAVAN 3D WAVEFORMS (Measured data sampled at 50 kHz) 49590 packets of 144 samples from 2014-11-28T21:19:14.564.999. Part 1/143

Processed Sat Nov 29 19:05:41 2014 by ELM ver.2012-10-06 from 001__elm20141128_211913__dat00.bin



ELMAVAN 3D WAVEFORMS (Measured data sampled at 50 kHz) 49590 packets of 144 samples from 2014-11-28T21:19:14.564.999. Part 71/143

Processed Sat Nov 29 19:05:42 2014 by ELM ver.2012-10-06 from 001__elm20141128_211913__dat00.bin



ELMAVAN 3D WAVEFORMS (Measured data sampled at 50 kHz) 49590 packets of 144 samples from 2014-11-28T21:19:14.564.999. Part 26/143

Processed Sat Nov 29 19:05:43 2014 by ELM ver.2012-10-06 from 001__elm20141128_211913__dat00.bin

