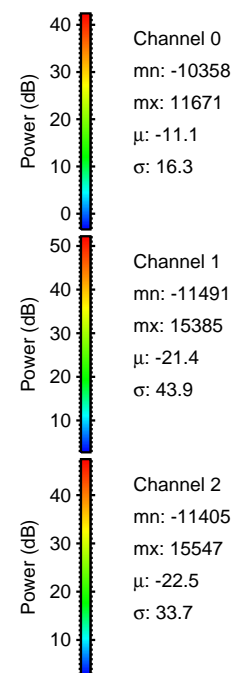
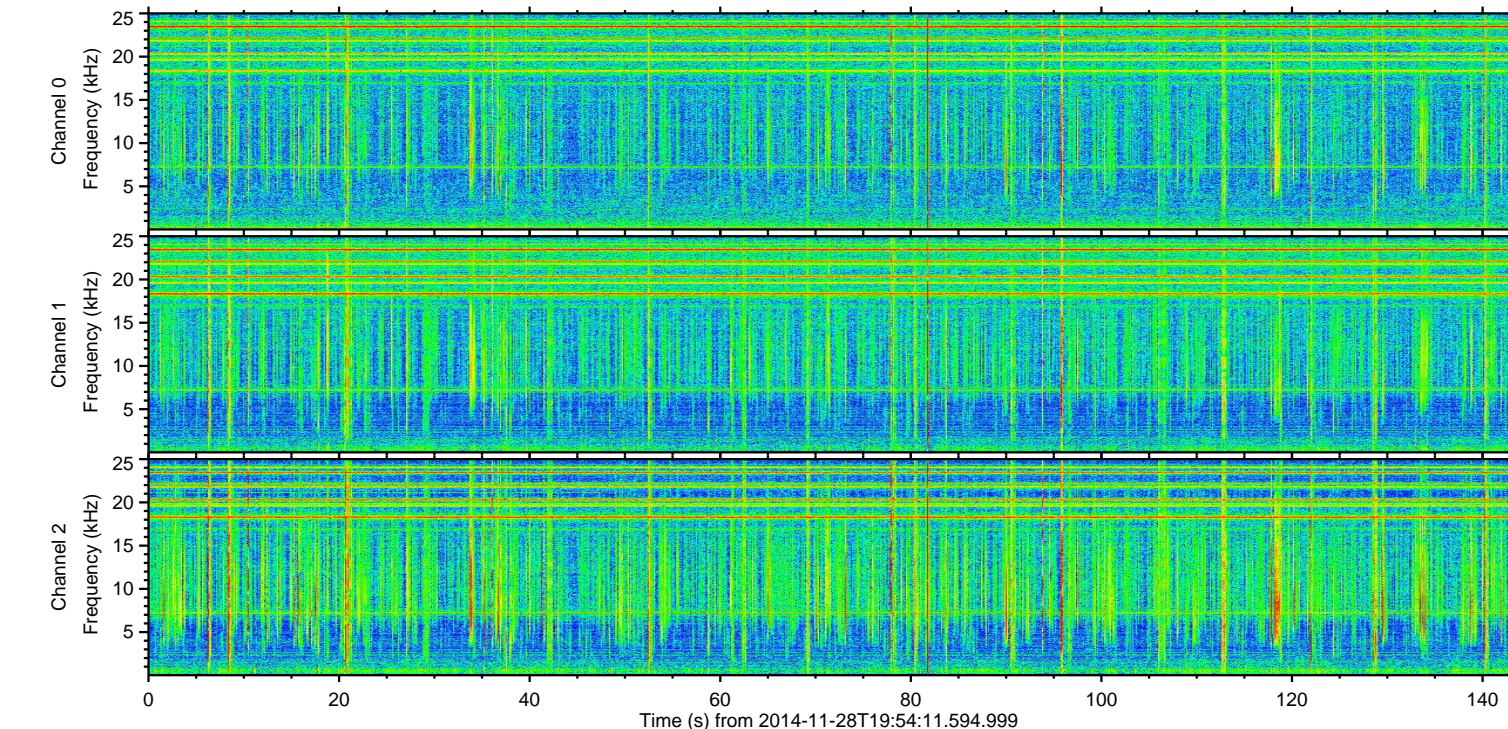
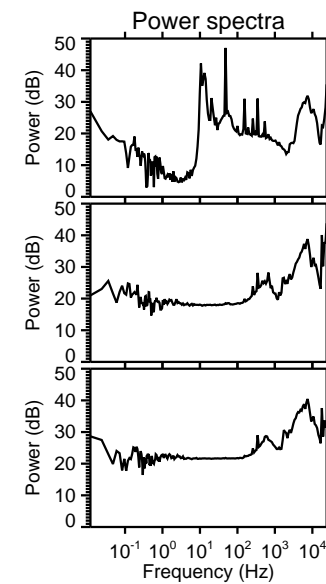
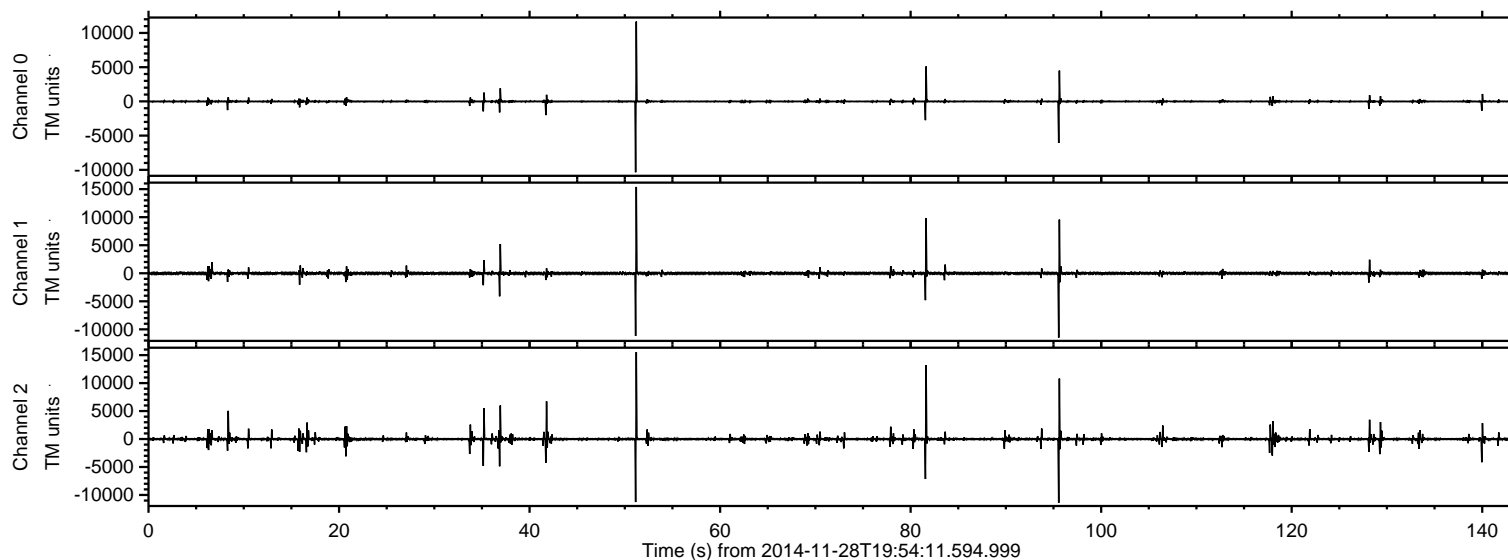


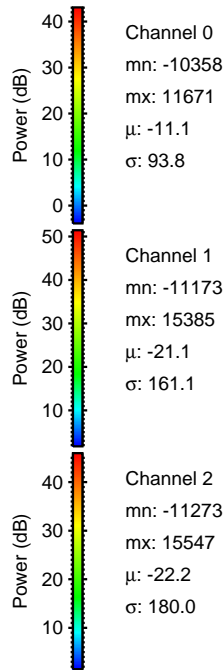
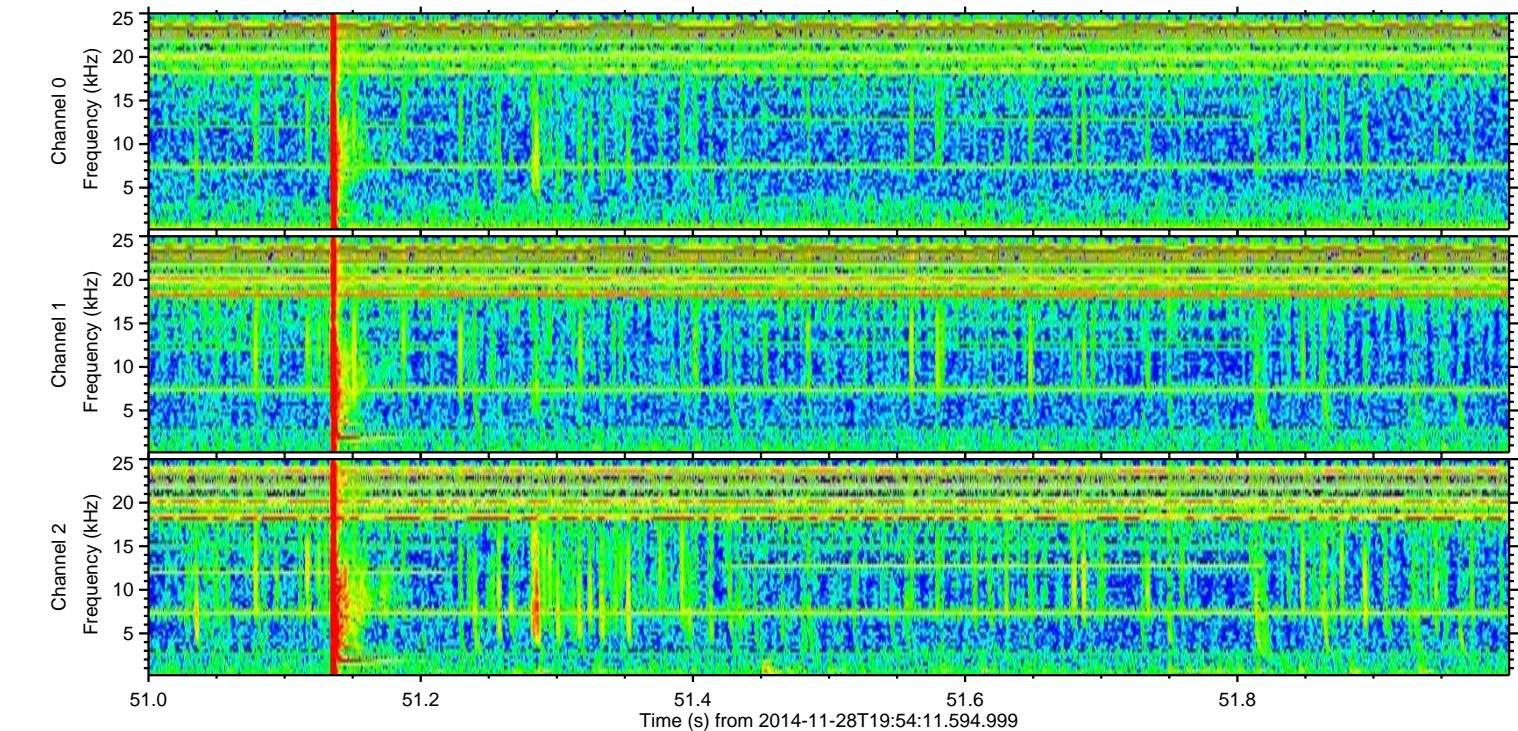
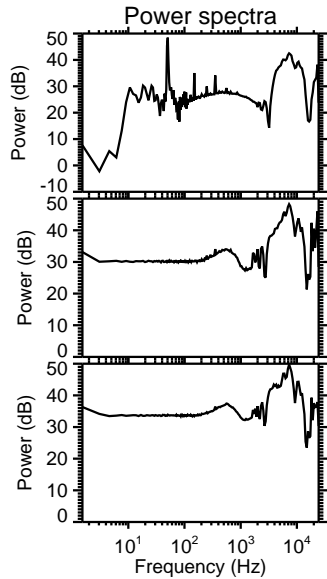
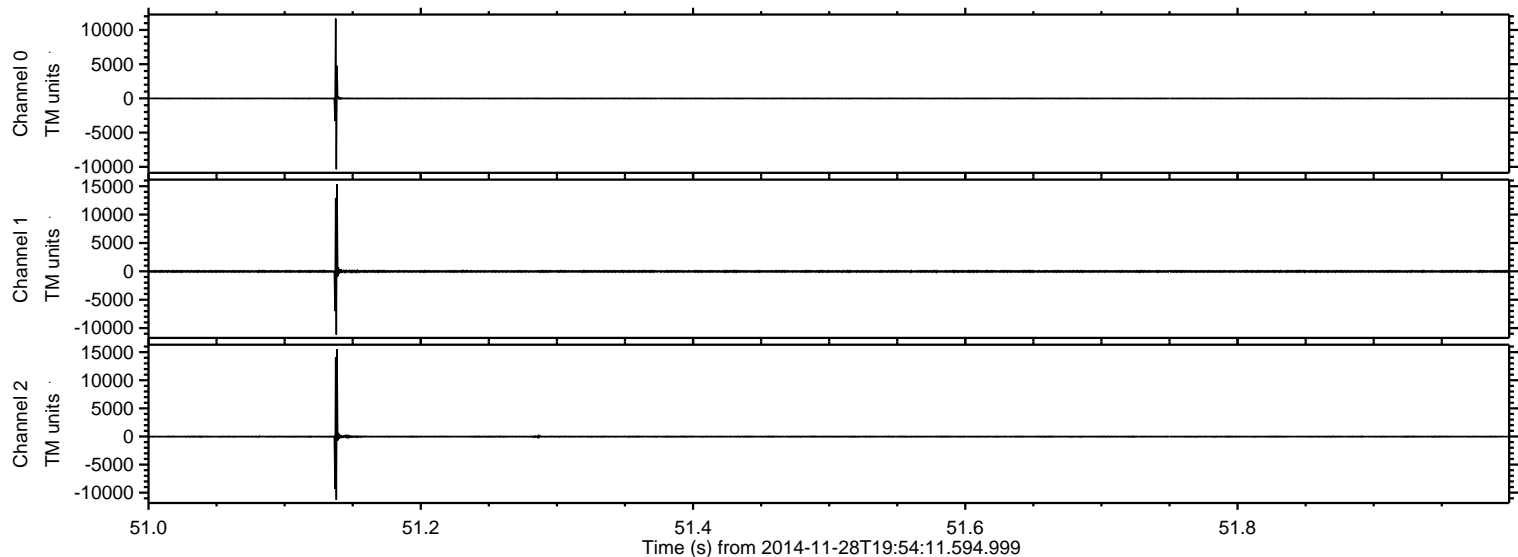
ELMAVAN 3D WAVEFORMS (Measured data sampled at 50 kHz) 49593 packets of 144 samples from 2014-11-28T19:54:11.594.999.

Processed Sat Nov 29 17:21:56 2014 by ELM ver.2012-10-06 from 001__elm20141128_195410__dat00.bin



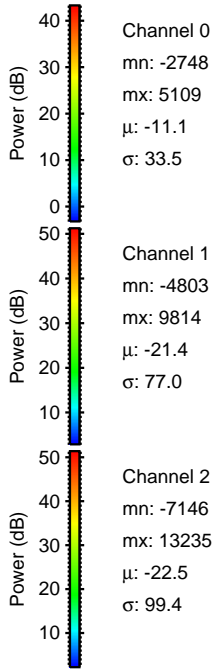
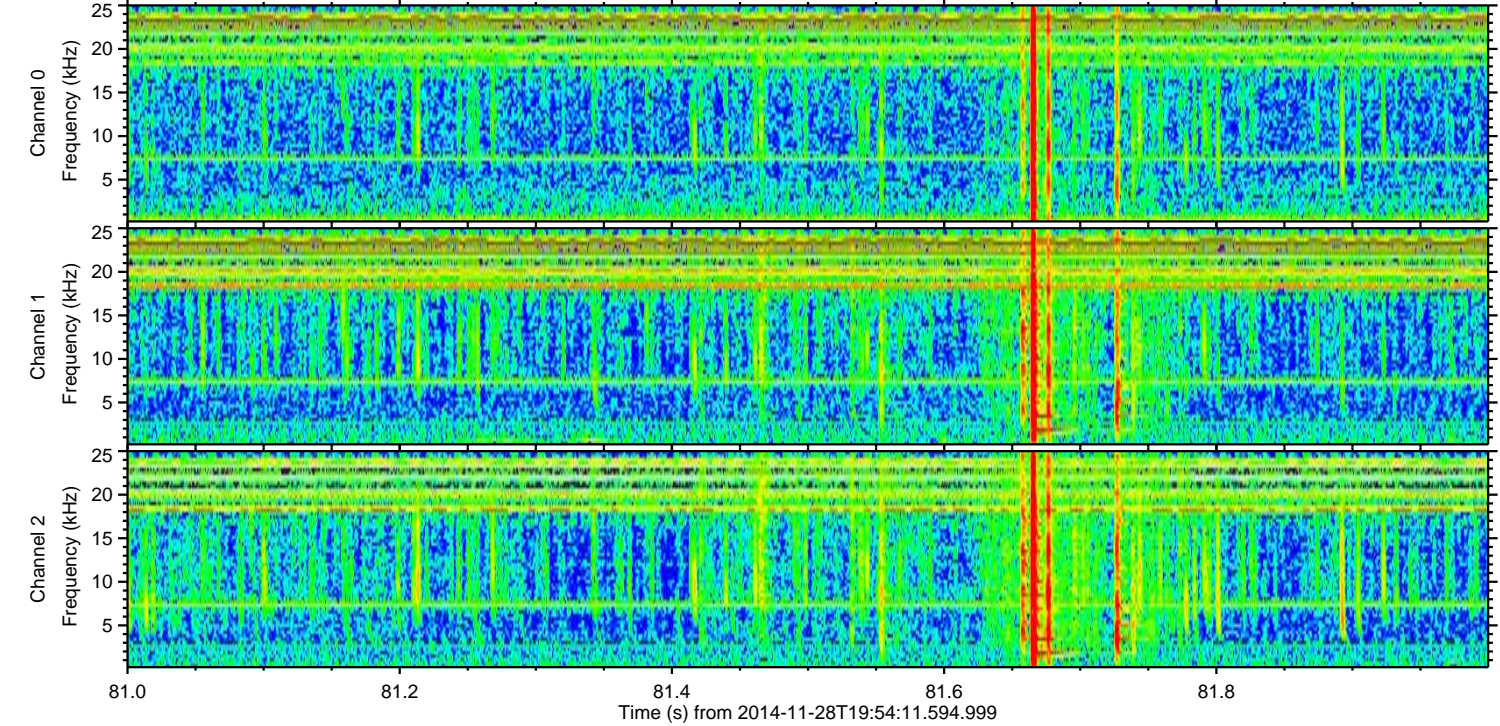
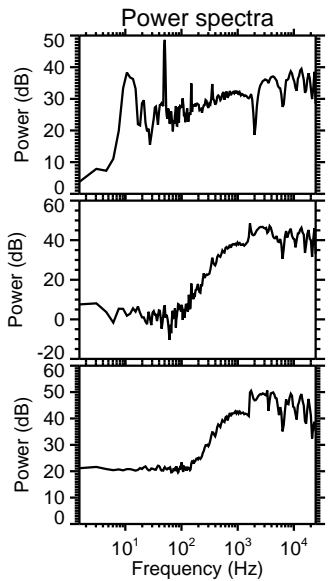
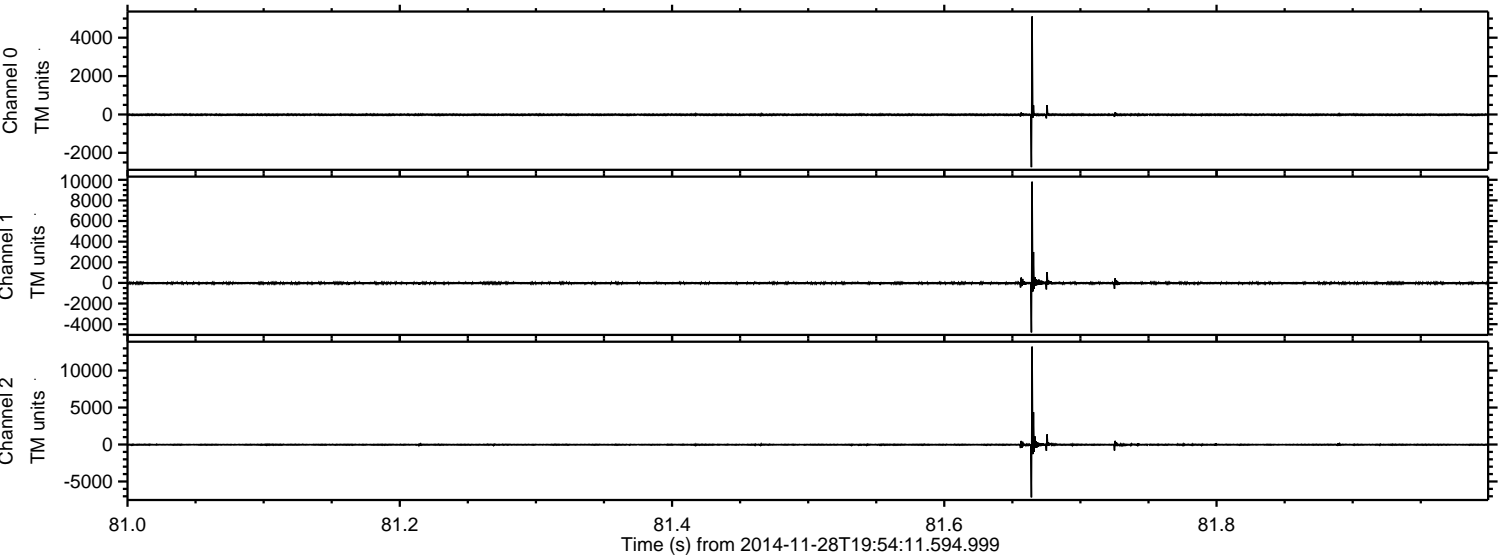
ELMAVAN 3D WAVEFORMS (Measured data sampled at 50 kHz) 49593 packets of 144 samples from 2014-11-28T19:54:11.594.999. Part 52/143

Processed Sat Nov 29 17:22:12 2014 by ELM ver.2012-10-06 from 001__elm20141128_195410__dat00.bin



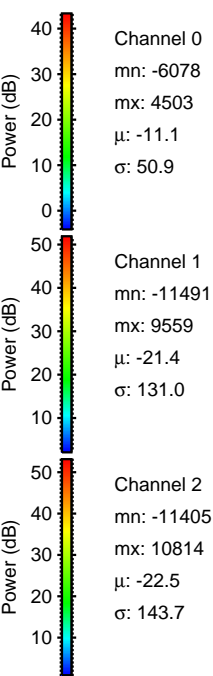
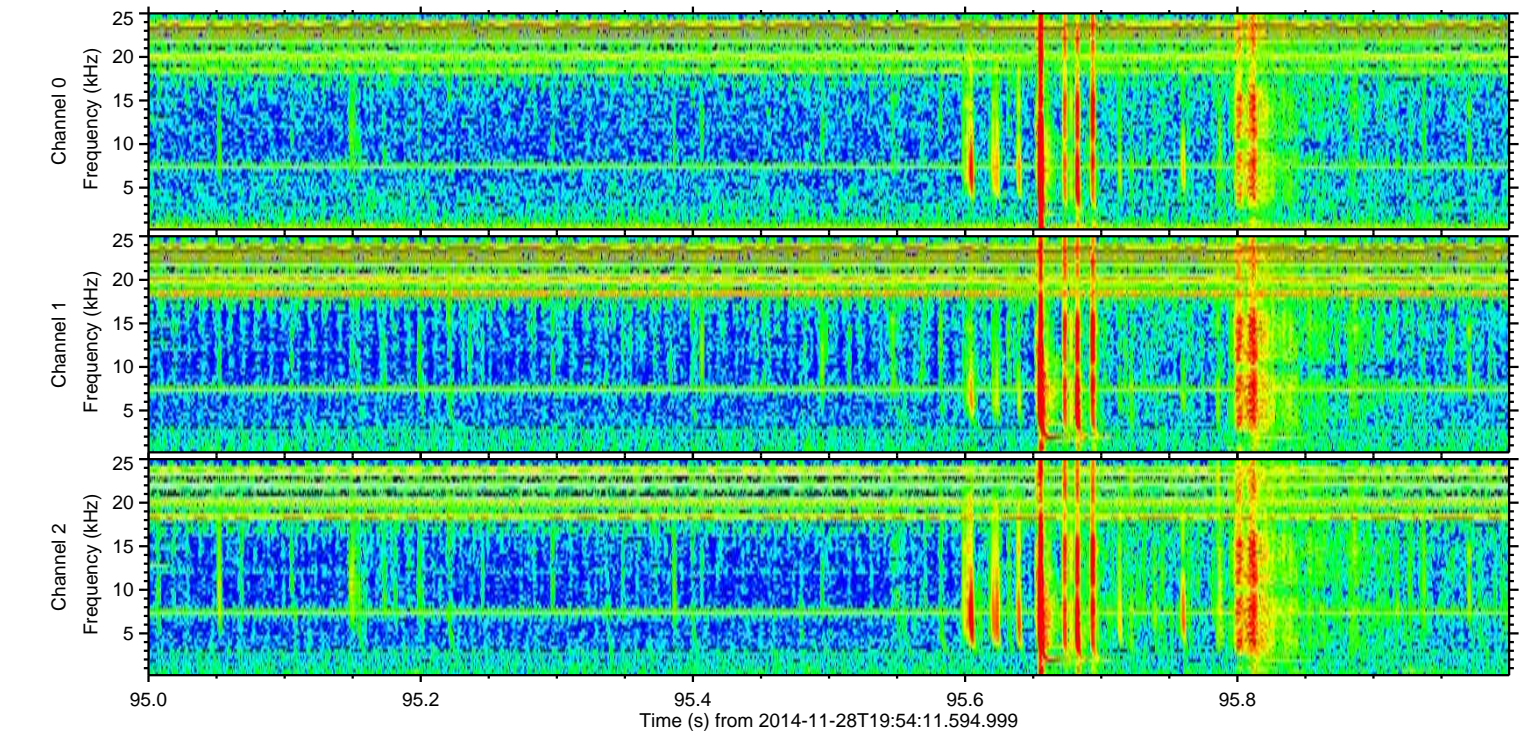
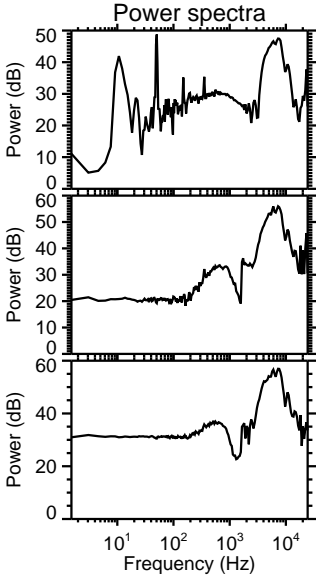
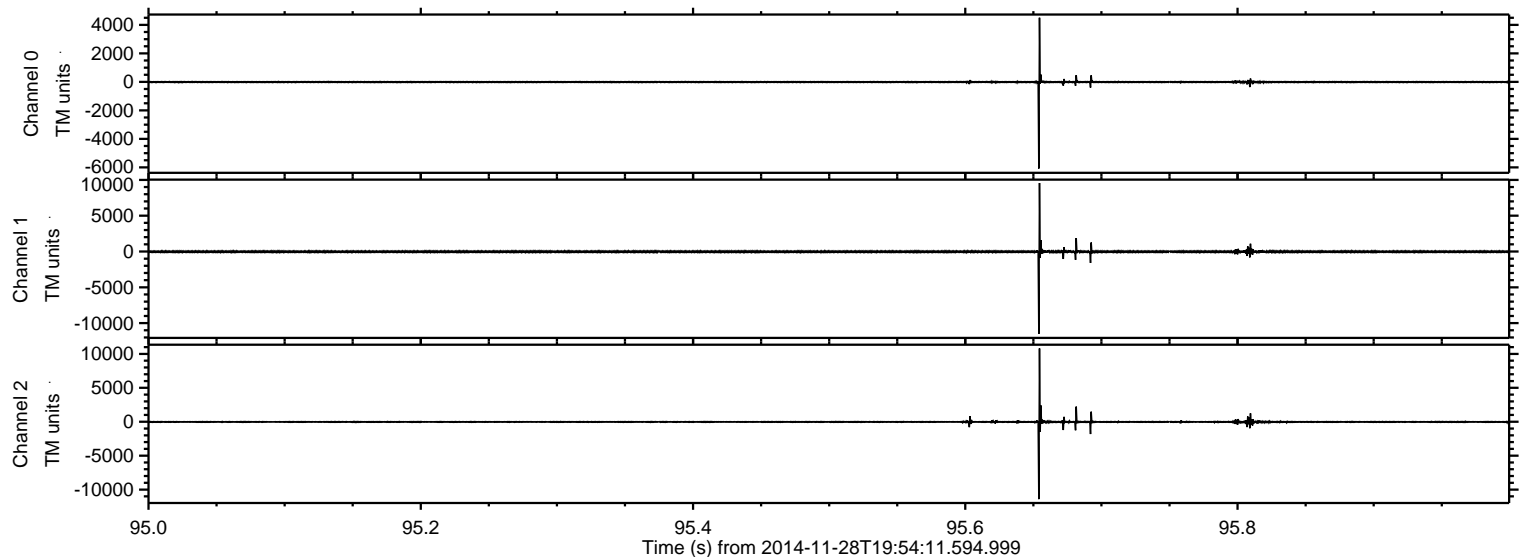
ELMAVAN 3D WAVEFORMS (Measured data sampled at 50 kHz) 49593 packets of 144 samples from 2014-11-28T19:54:11.594.999. Part 82/143

Processed Sat Nov 29 17:22:13 2014 by ELM ver.2012-10-06 from 001__elm20141128_195410__dat00.bin



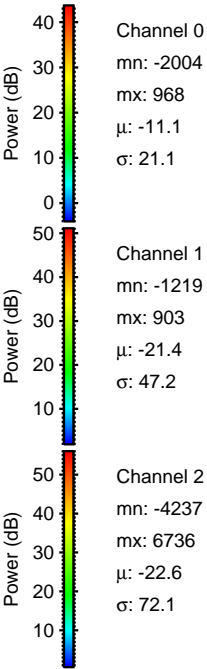
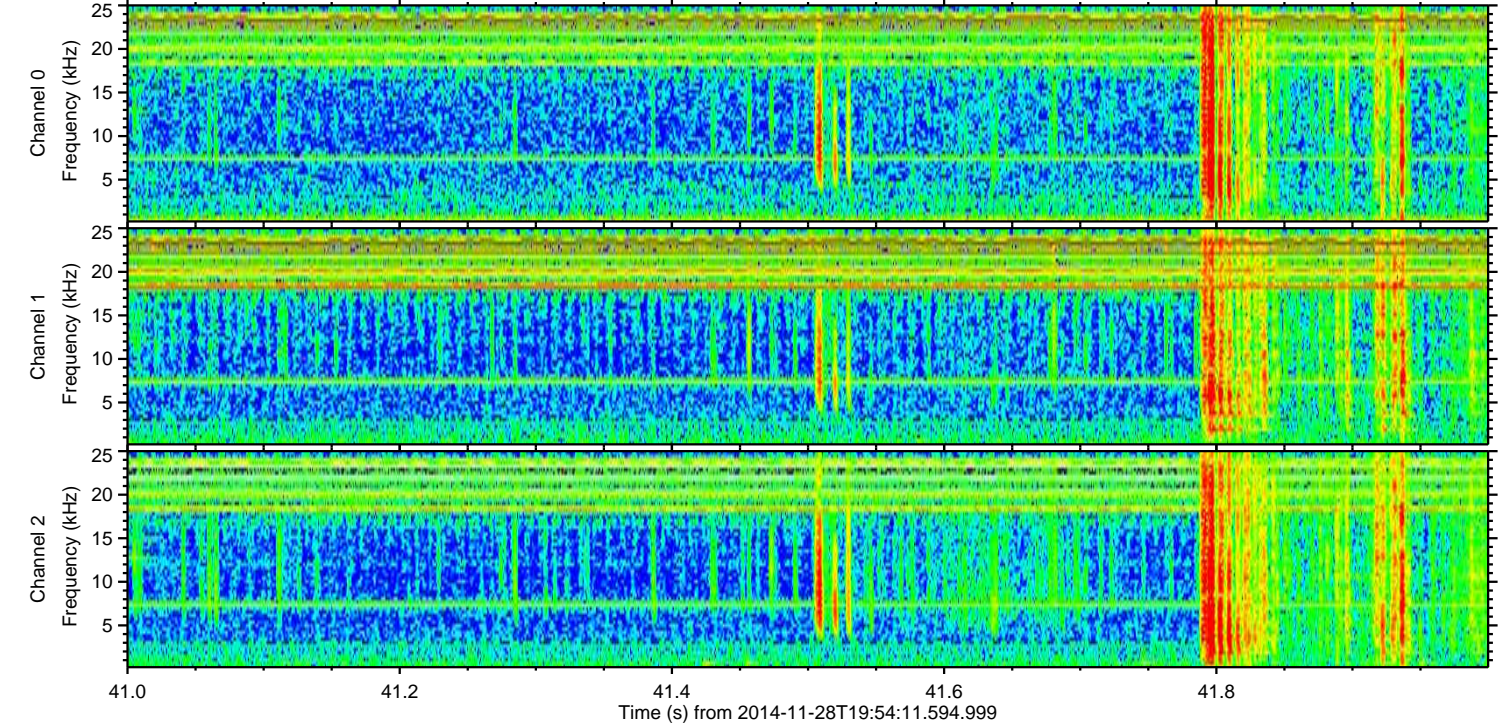
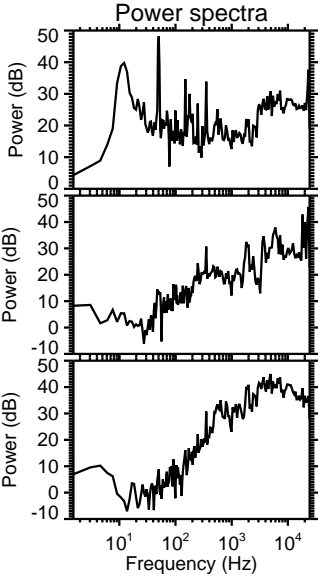
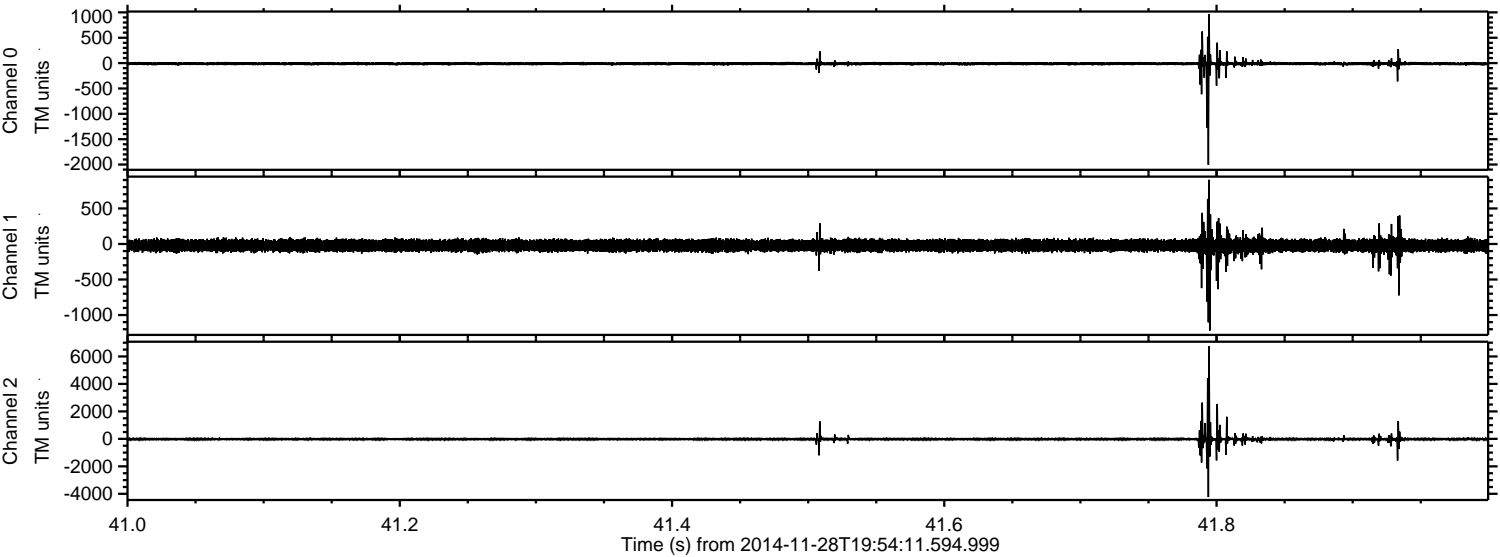
ELMAVAN 3D WAVEFORMS (Measured data sampled at 50 kHz) 49593 packets of 144 samples from 2014-11-28T19:54:11.594.999. Part 96/143

Processed Sat Nov 29 17:22:14 2014 by ELM ver.2012-10-06 from 001__elm20141128_195410__dat00.bin



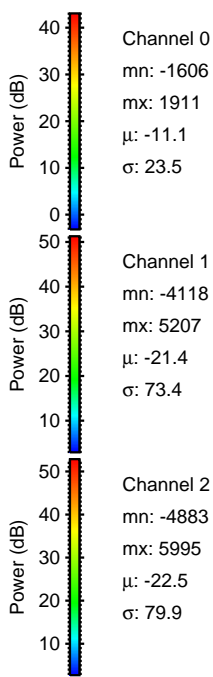
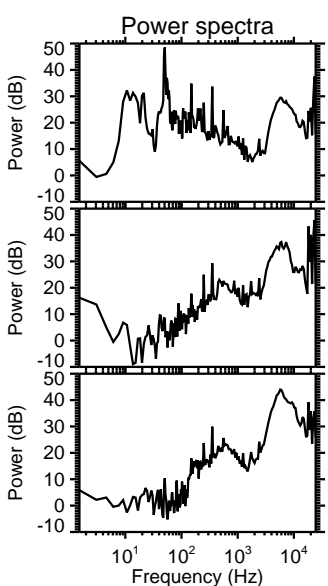
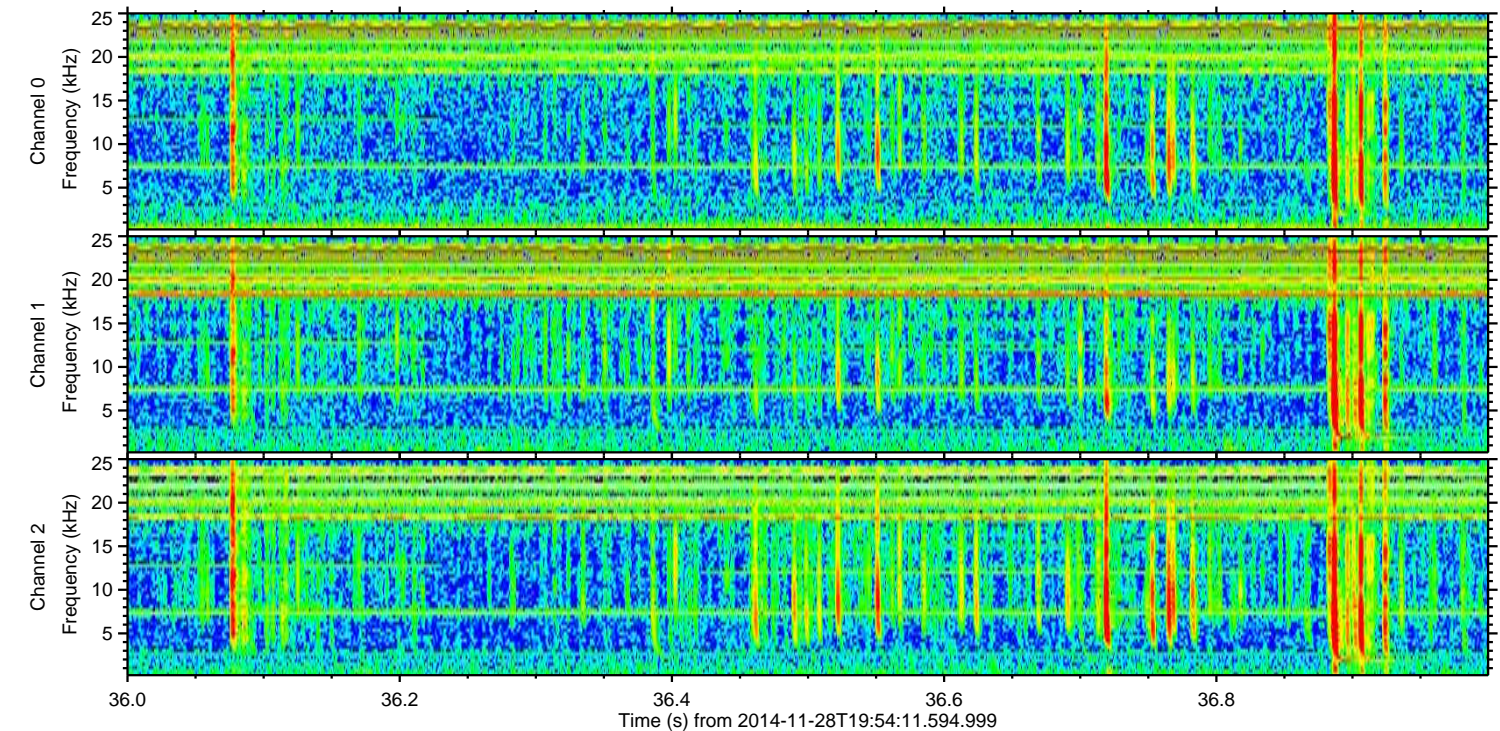
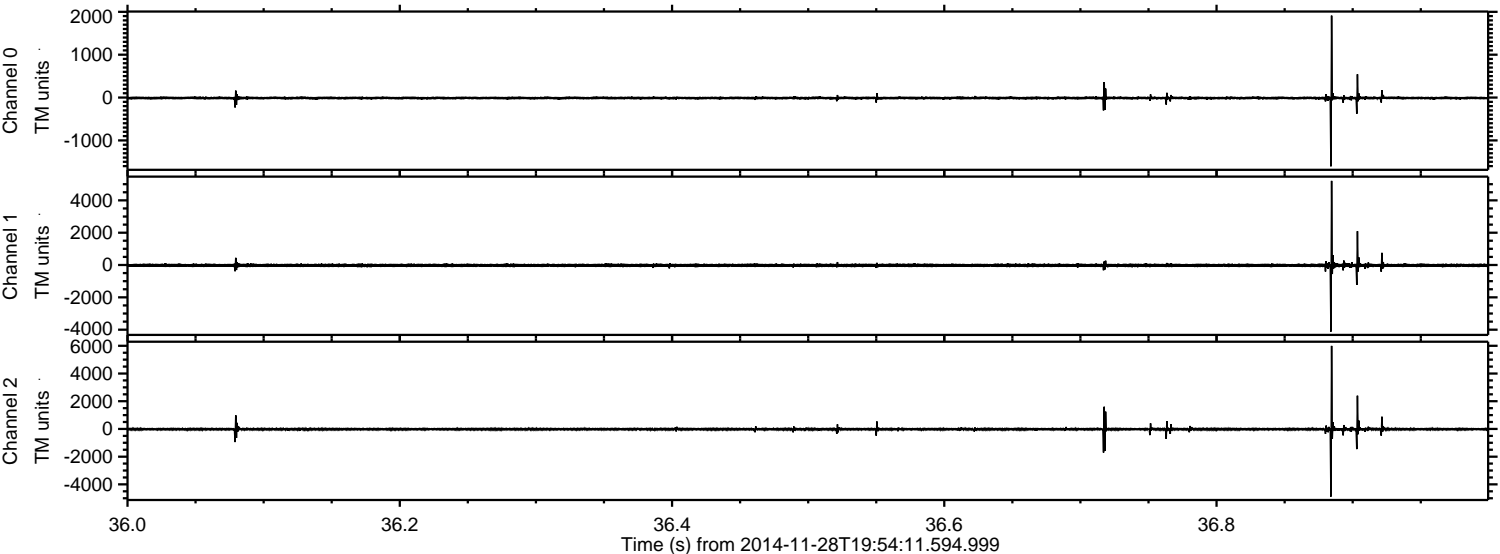
ELMAVAN 3D WAVEFORMS (Measured data sampled at 50 kHz) 49593 packets of 144 samples from 2014-11-28T19:54:11.594.999. Part 42/143

Processed Sat Nov 29 17:22:16 2014 by ELM ver.2012-10-06 from 001__elm20141128_195410__dat00.bin



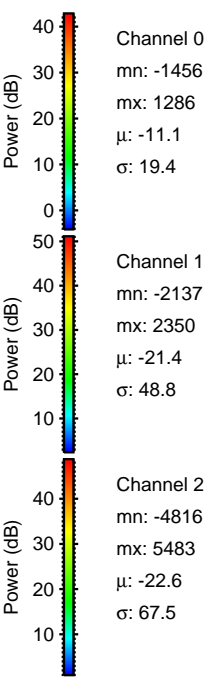
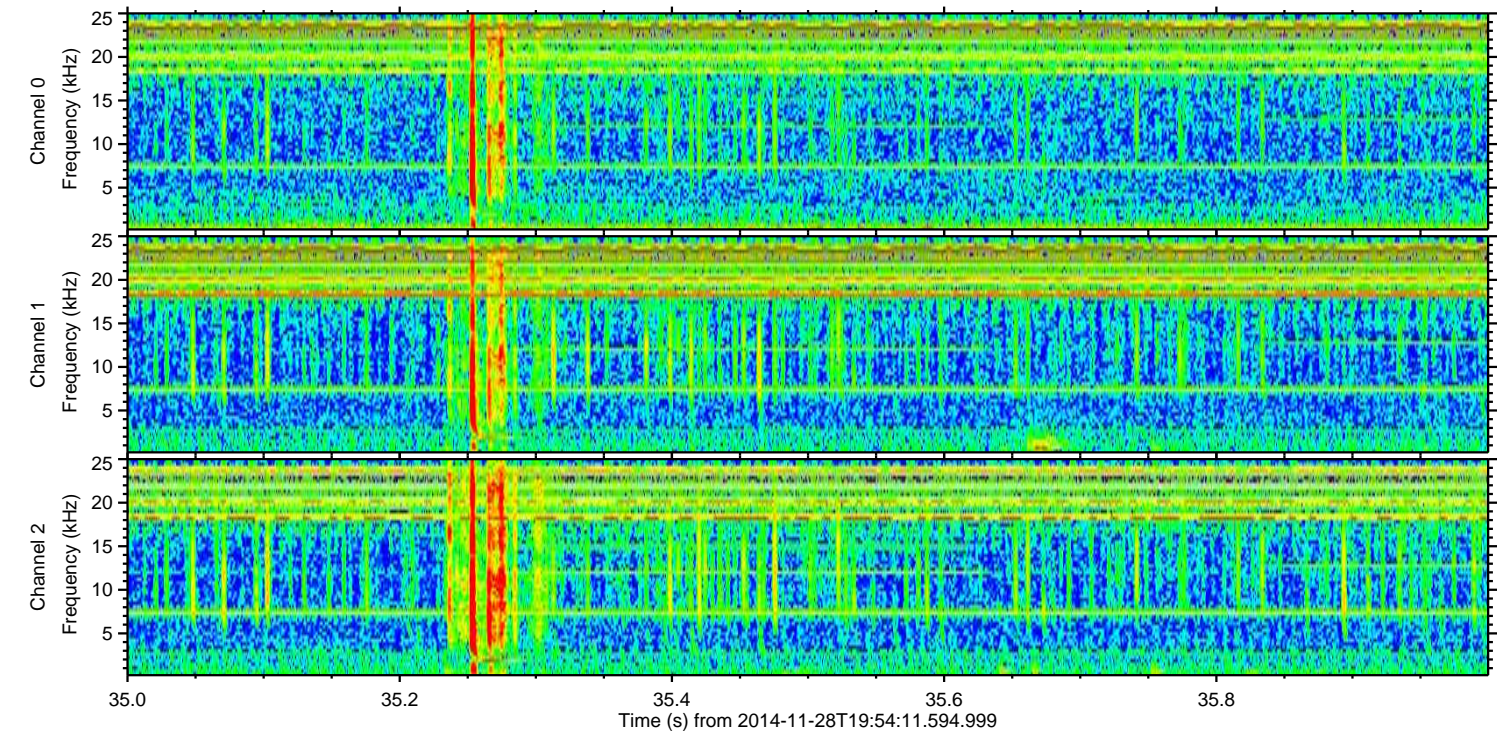
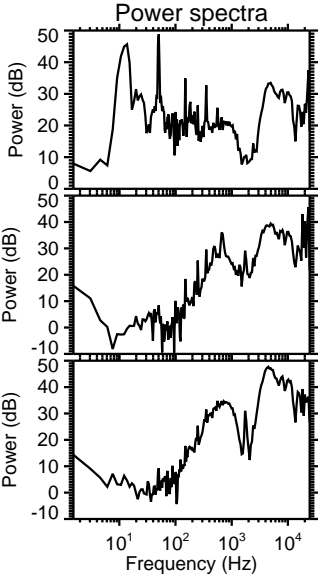
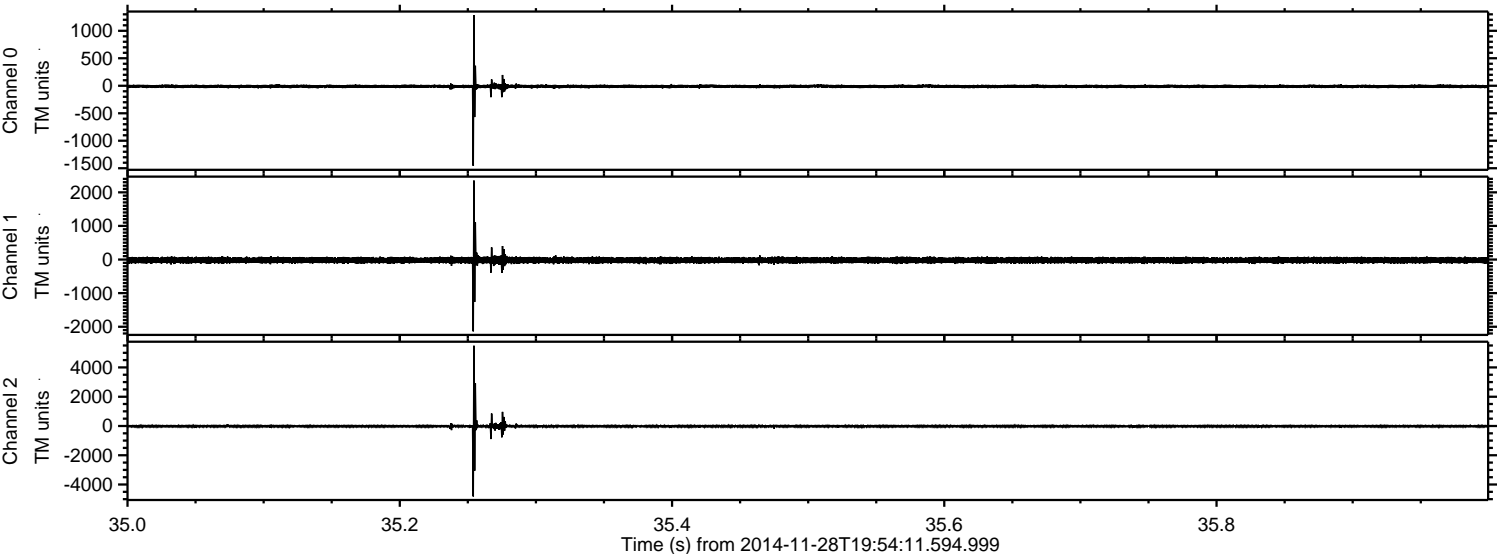
ELMAVAN 3D WAVEFORMS (Measured data sampled at 50 kHz) 49593 packets of 144 samples from 2014-11-28T19:54:11.594.999. Part 37/143

Processed Sat Nov 29 17:22:17 2014 by ELM ver.2012-10-06 from 001__elm20141128_195410__dat00.bin



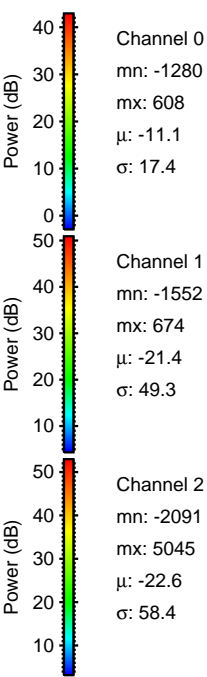
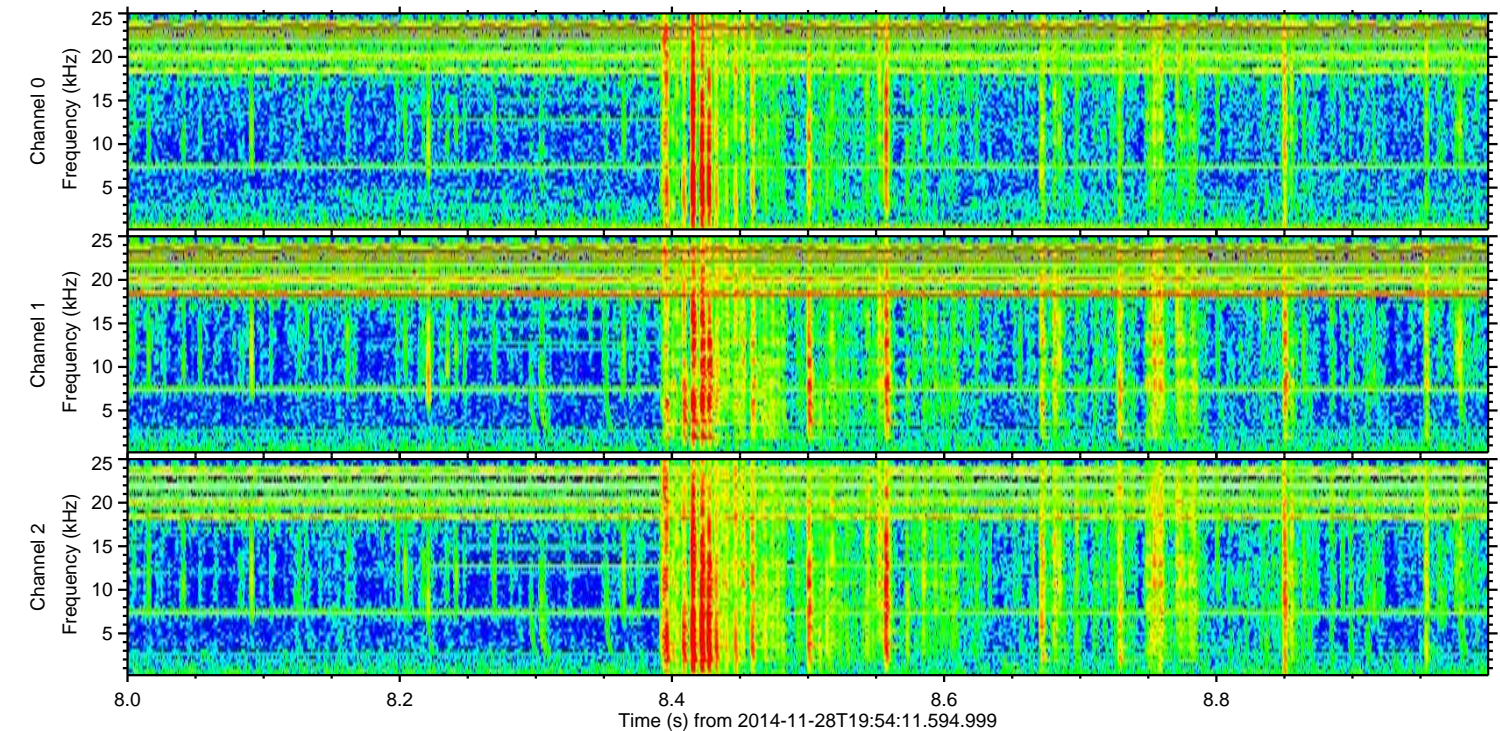
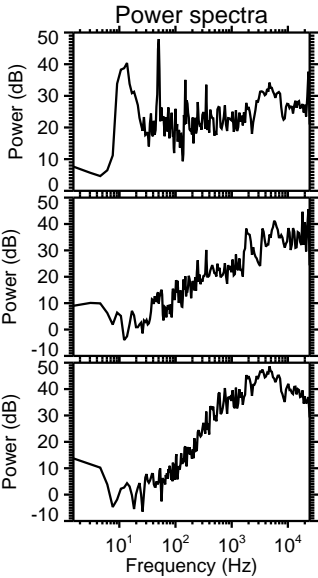
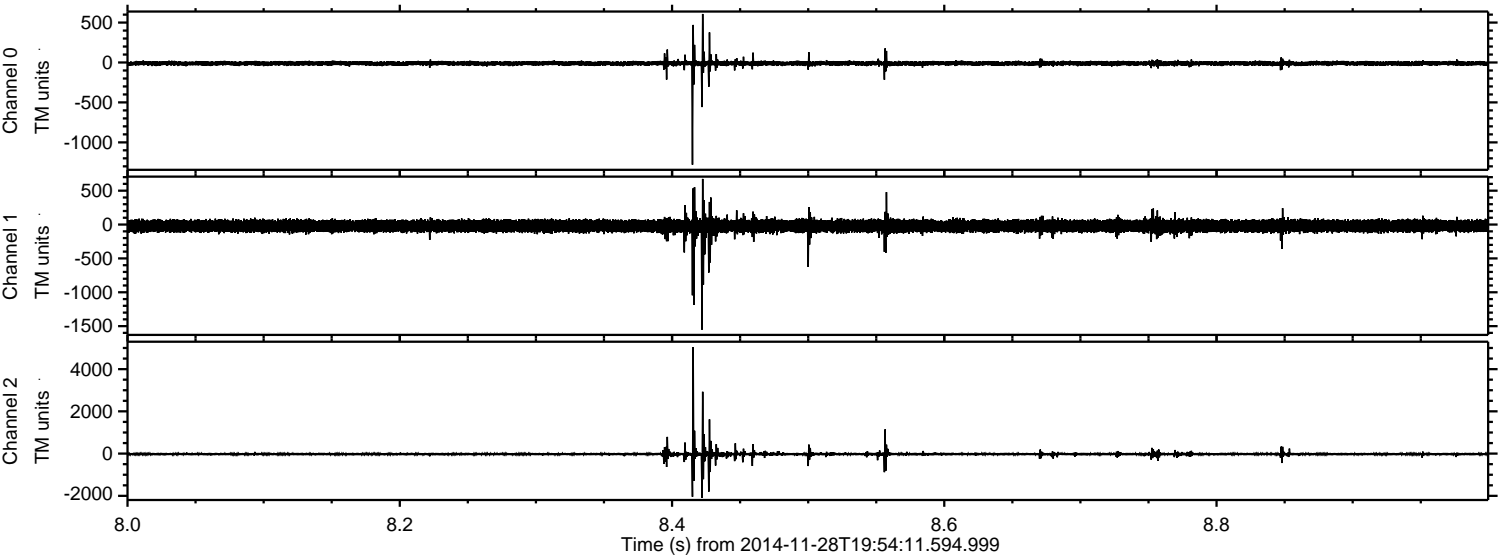
ELMAVAN 3D WAVEFORMS (Measured data sampled at 50 kHz) 49593 packets of 144 samples from 2014-11-28T19:54:11.594.999. Part 36/143

Processed Sat Nov 29 17:22:18 2014 by ELM ver.2012-10-06 from 001__elm20141128_195410__dat00.bin



ELMAVAN 3D WAVEFORMS (Measured data sampled at 50 kHz) 49593 packets of 144 samples from 2014-11-28T19:54:11.594.999. Part 9/143

Processed Sat Nov 29 17:22:19 2014 by ELM ver.2012-10-06 from 001__elm20141128_195410__dat00.bin



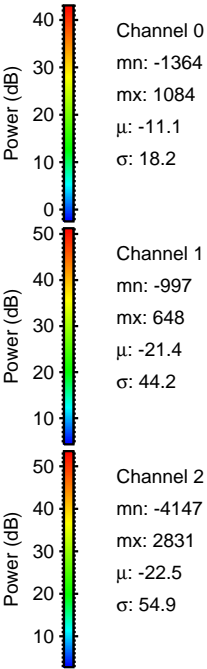
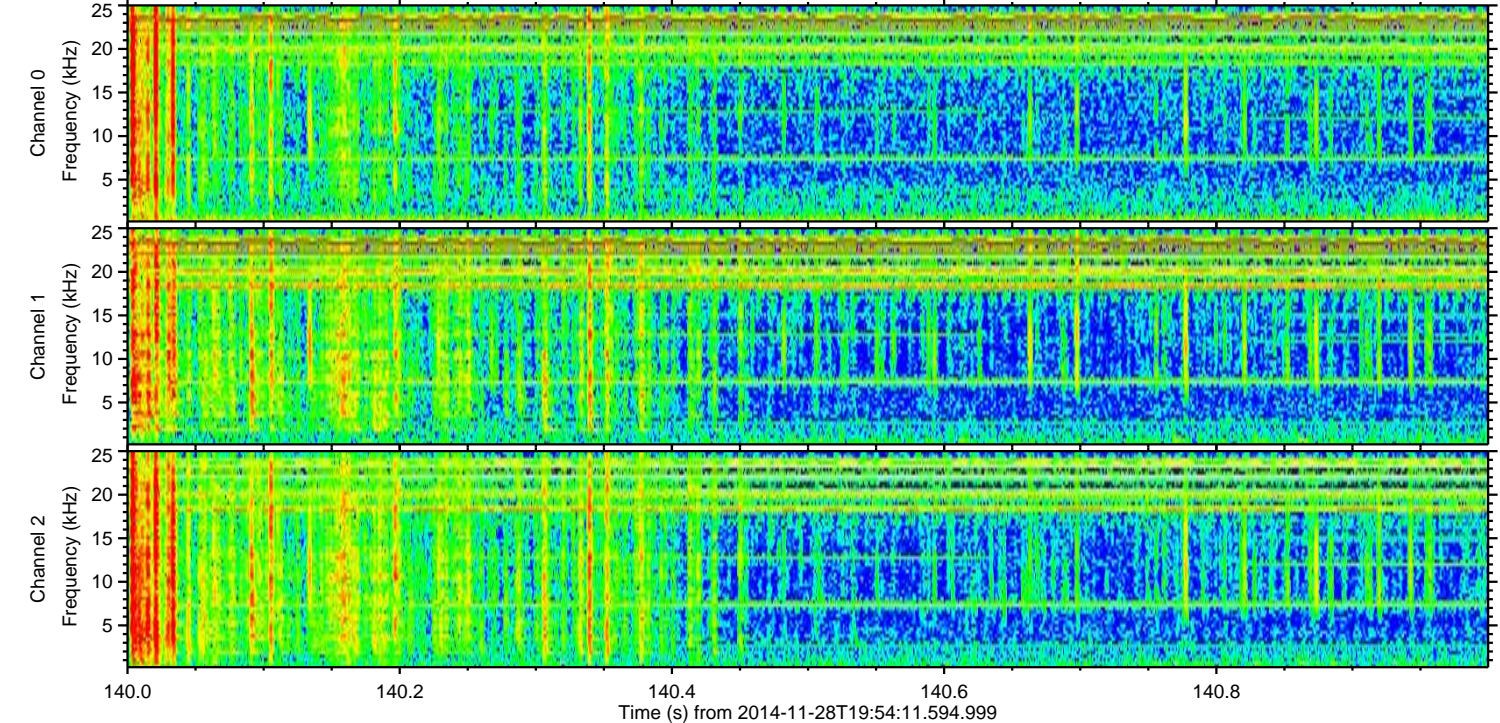
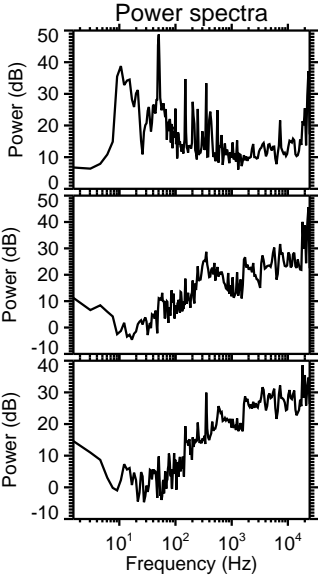
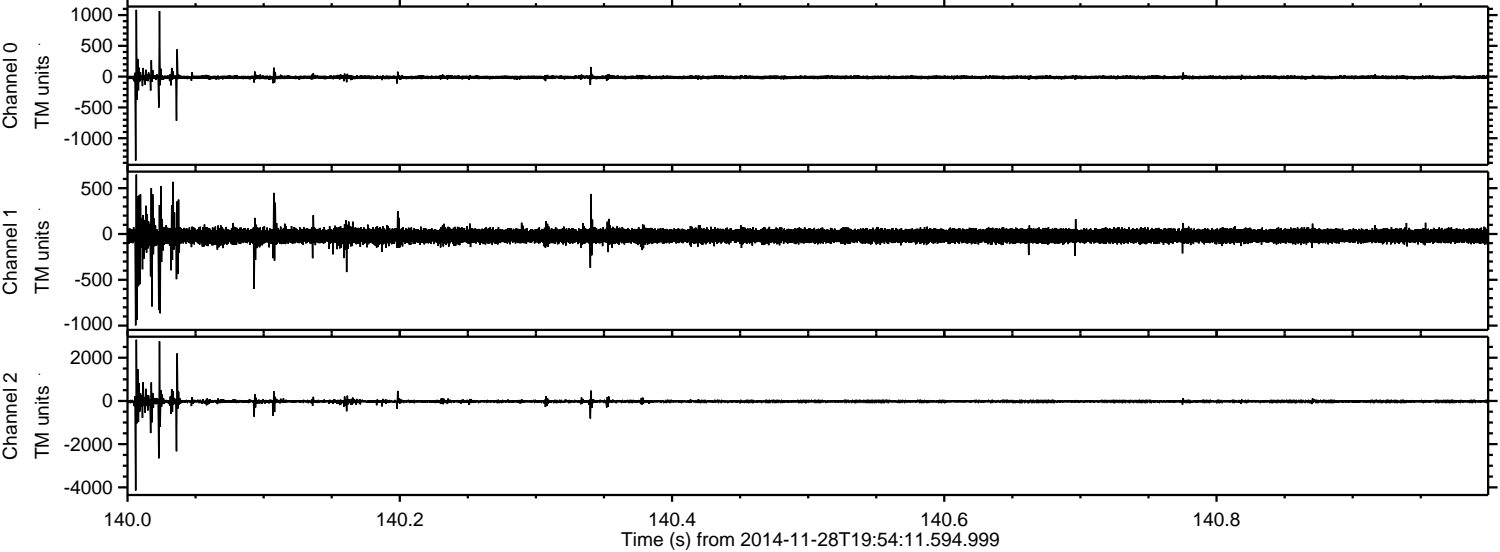
Channel 0
mn: -1280
mx: 608
 μ : -11.1
 σ : 17.4

Channel 1
mn: -1552
mx: 674
 μ : -21.4
 σ : 49.3

Channel 2
mn: -2091
mx: 5045
 μ : -22.6
 σ : 58.4

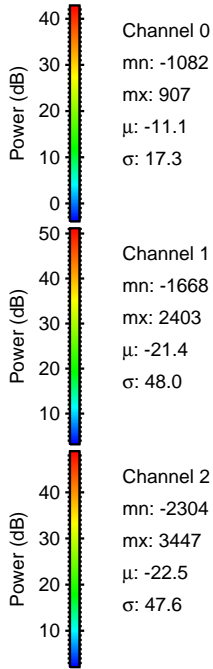
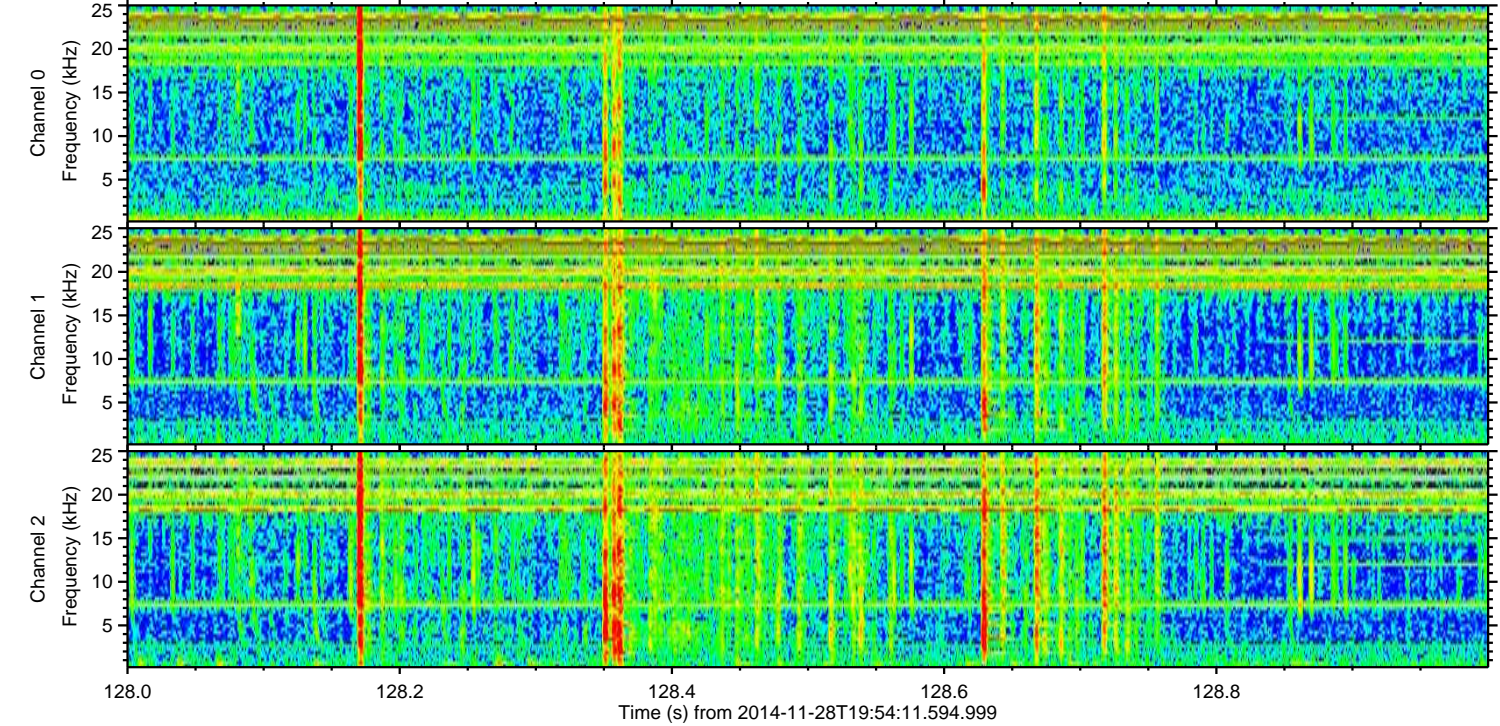
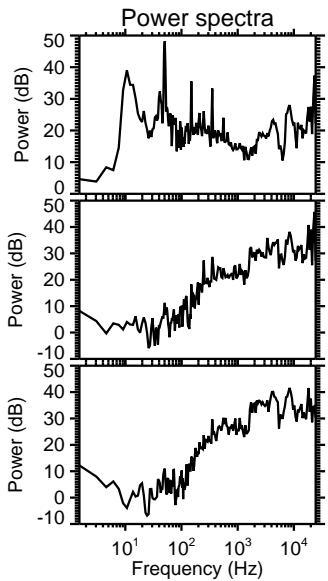
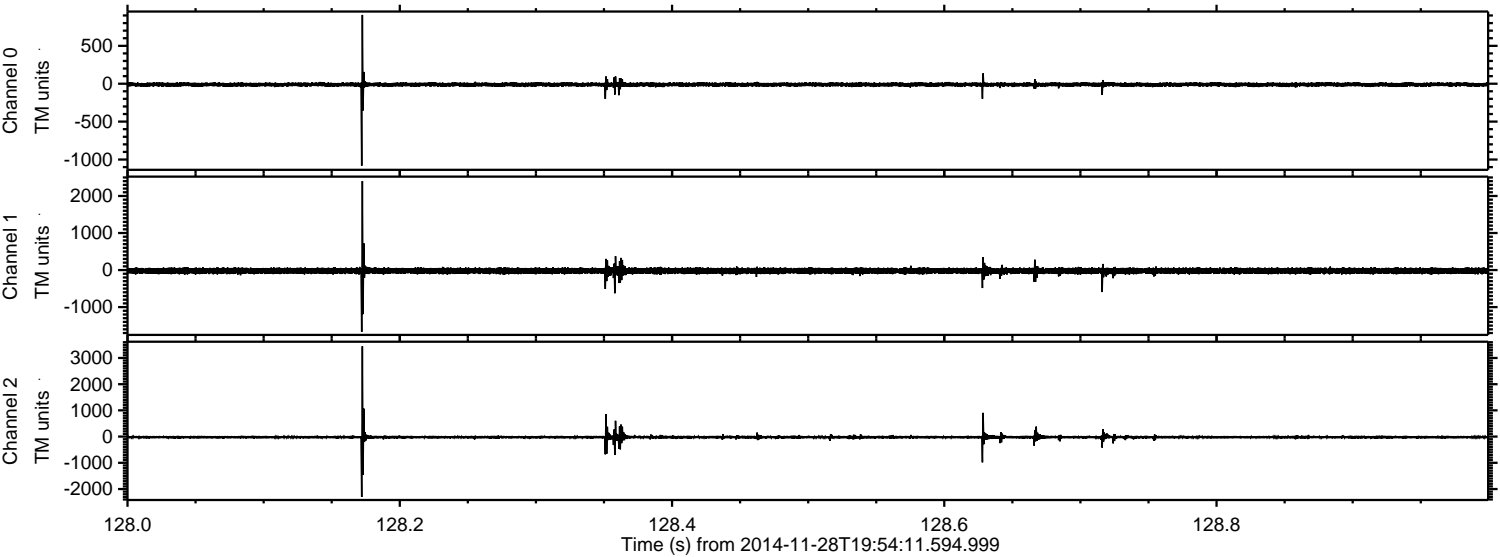
ELMAVAN 3D WAVEFORMS (Measured data sampled at 50 kHz) 49593 packets of 144 samples from 2014-11-28T19:54:11.594.999. Part 141/143

Processed Sat Nov 29 17:22:20 2014 by ELM ver.2012-10-06 from 001__elm20141128_195410__dat00.bin



ELMAVAN 3D WAVEFORMS (Measured data sampled at 50 kHz) 49593 packets of 144 samples from 2014-11-28T19:54:11.594.999. Part 129/143

Processed Sat Nov 29 17:22:21 2014 by ELM ver.2012-10-06 from 001__elm20141128_195410__dat00.bin



Channel 0
mn: -1082
mx: 907
 μ : -11.1
 σ : 17.3

Channel 1
mn: -1668
mx: 2403
 μ : -21.4
 σ : 48.0

Channel 2
mn: -2304
mx: 3447
 μ : -22.5
 σ : 47.6

ELMAVAN 3D WAVEFORMS (Measured data sampled at 50 kHz) 49593 packets of 144 samples from 2014-11-28T19:54:11.594.999. Part 137/143

