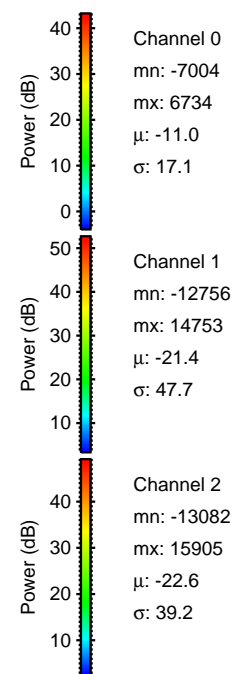
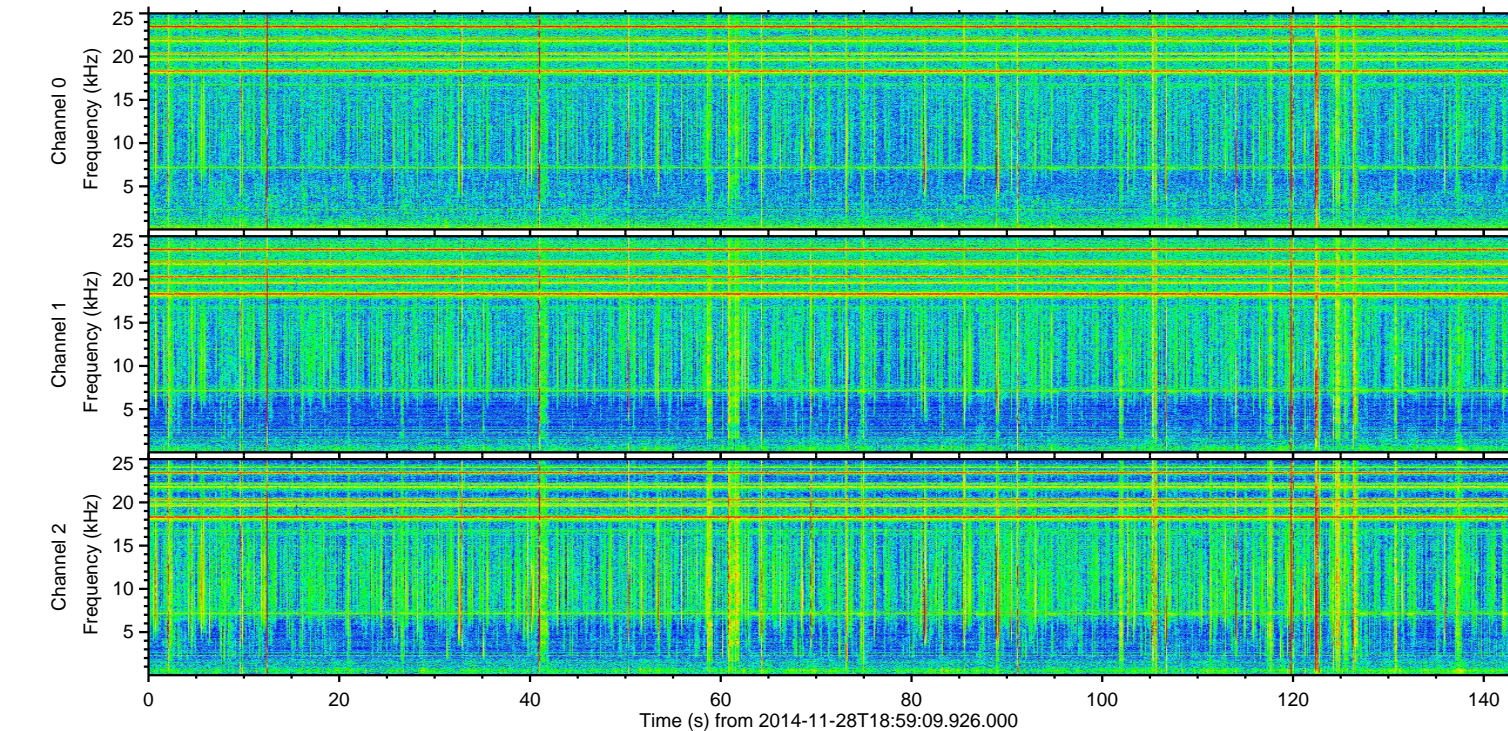
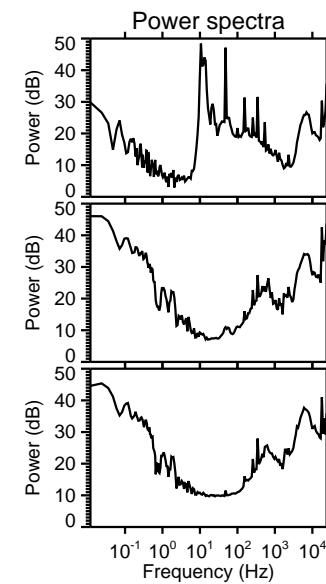
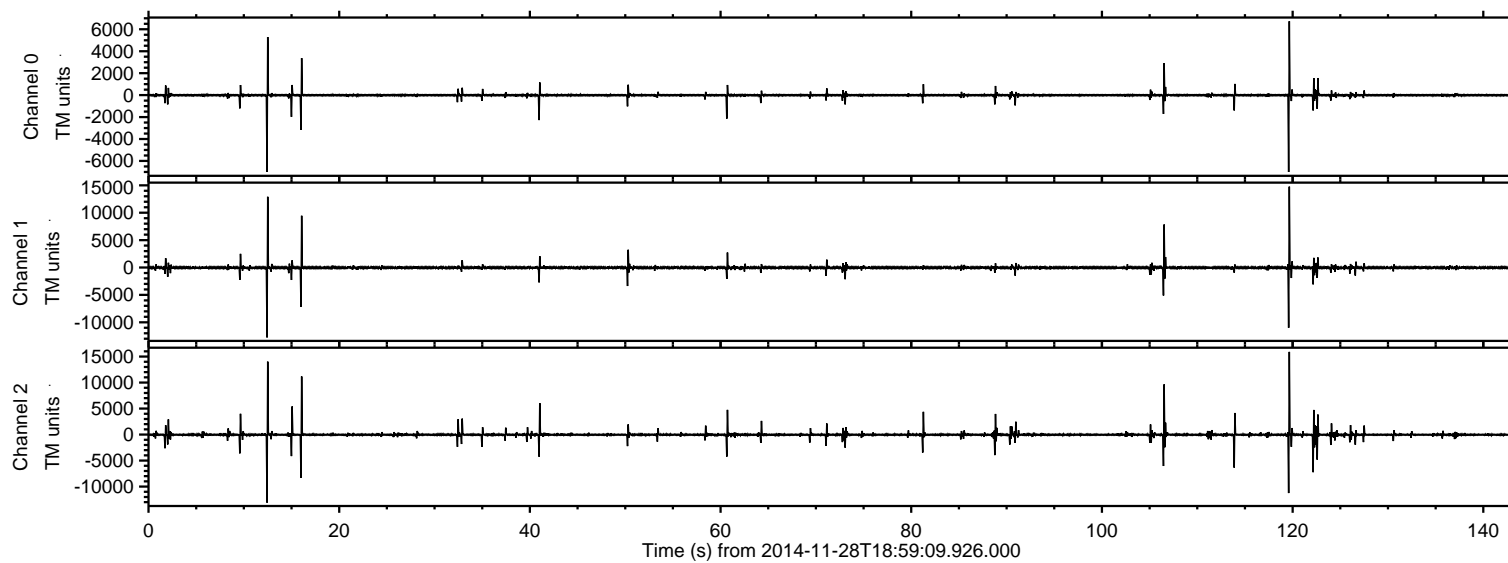


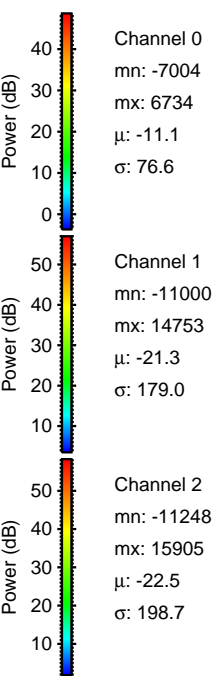
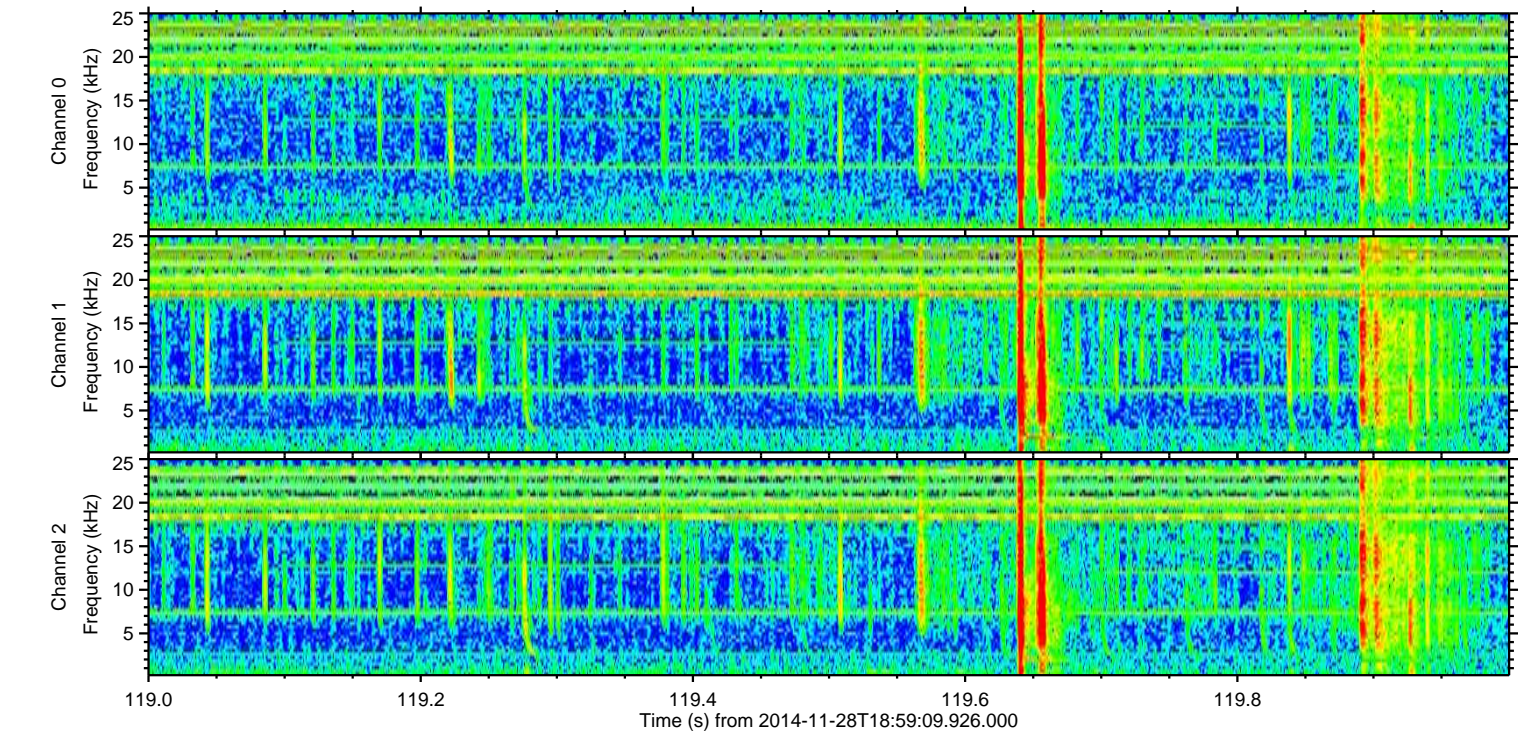
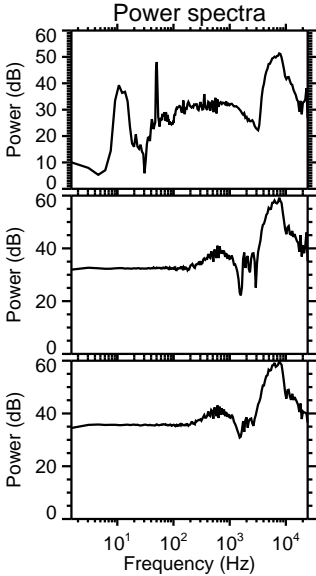
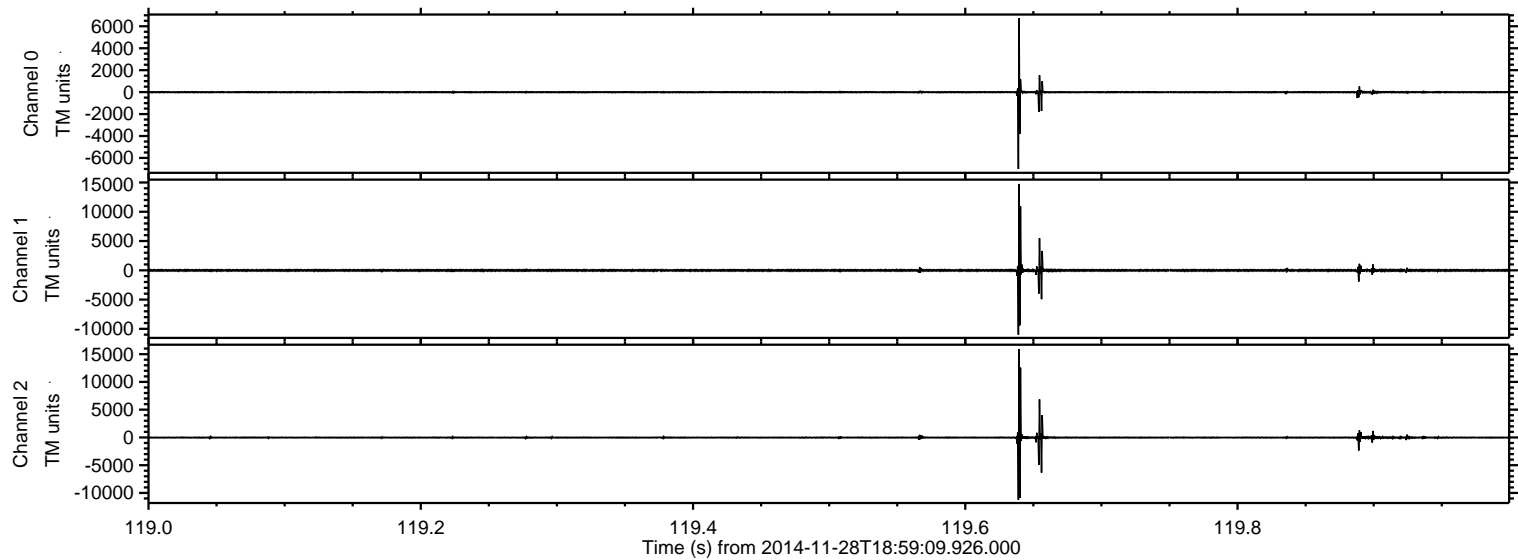
ELMAVAN 3D WAVEFORMS (Measured data sampled at 50 kHz) 49552 packets of 144 samples from 2014-11-28T18:59:09.926.000.

Processed Sat Nov 29 16:22:59 2014 by ELM ver.2012-10-06 from 001__elm20141128_185908__dat00.bin



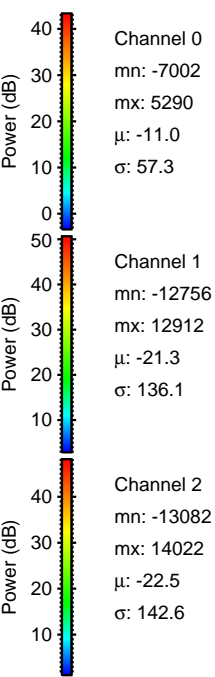
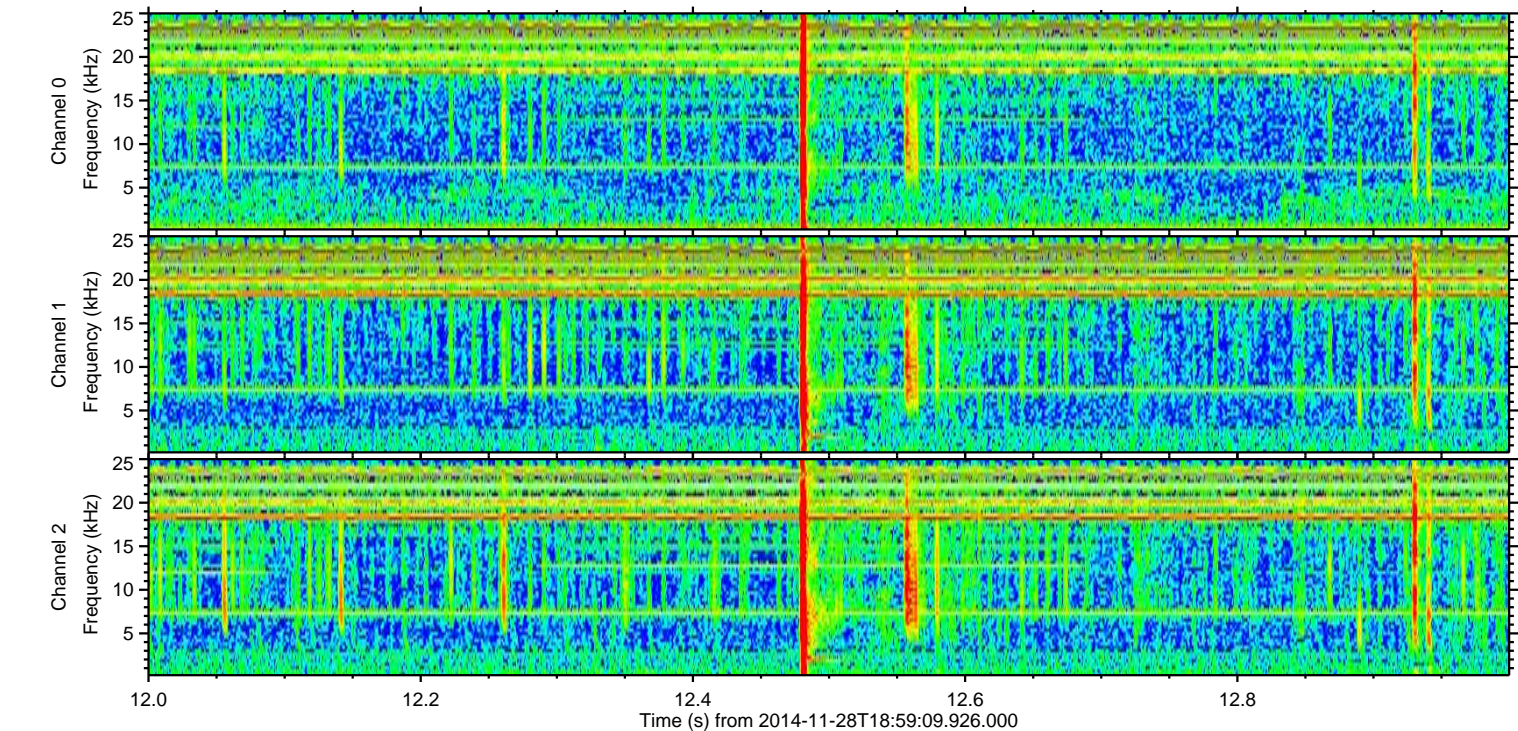
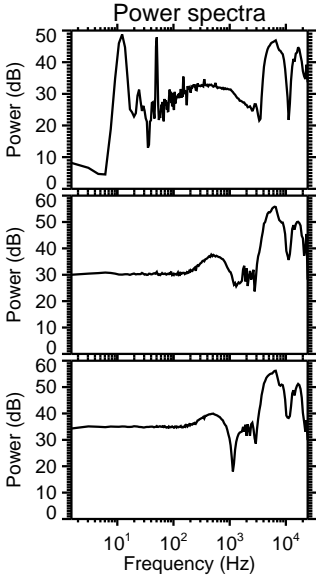
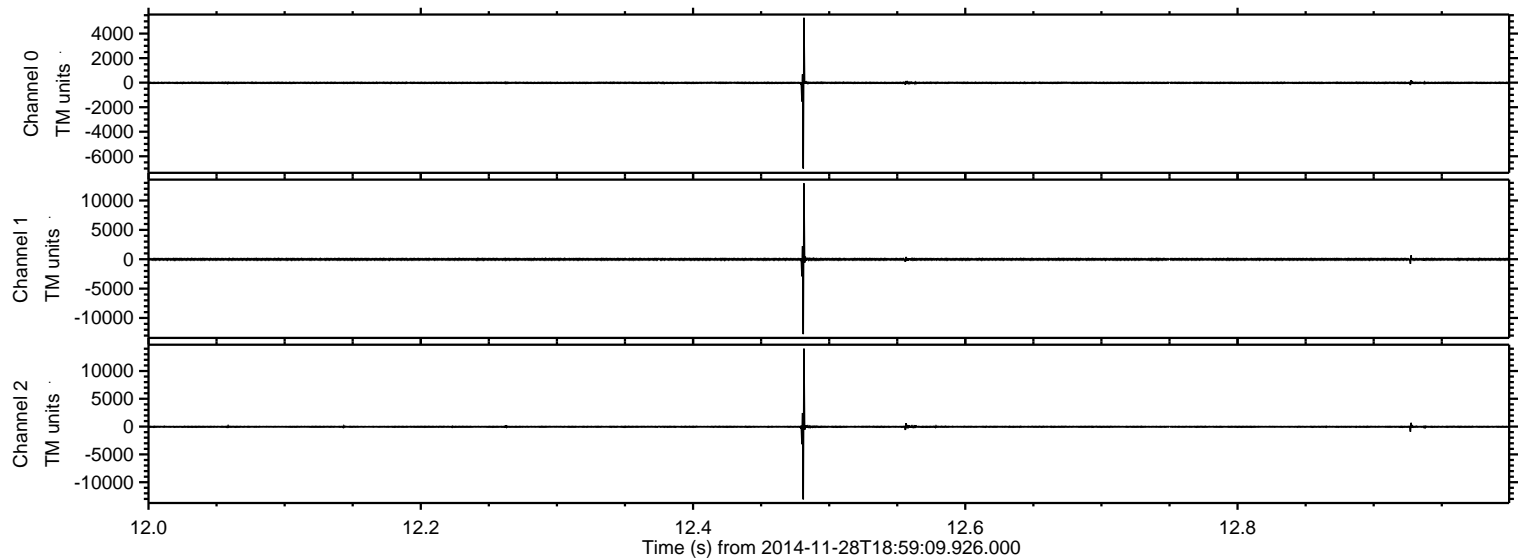
ELMAVAN 3D WAVEFORMS (Measured data sampled at 50 kHz) 49552 packets of 144 samples from 2014-11-28T18:59:09.926.000. Part 120/143

Processed Sat Nov 29 16:23:15 2014 by ELM ver.2012-10-06 from 001__elm20141128_185908__dat00.bin



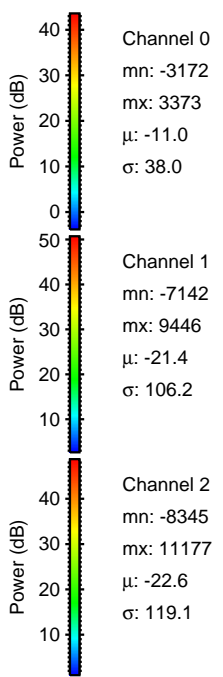
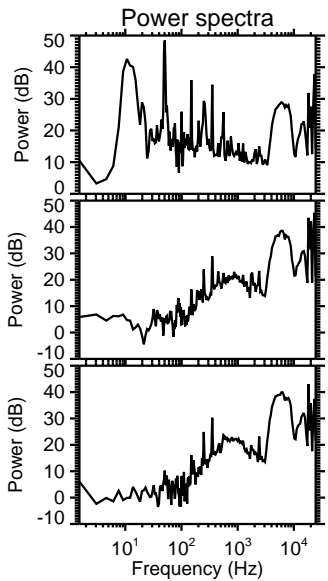
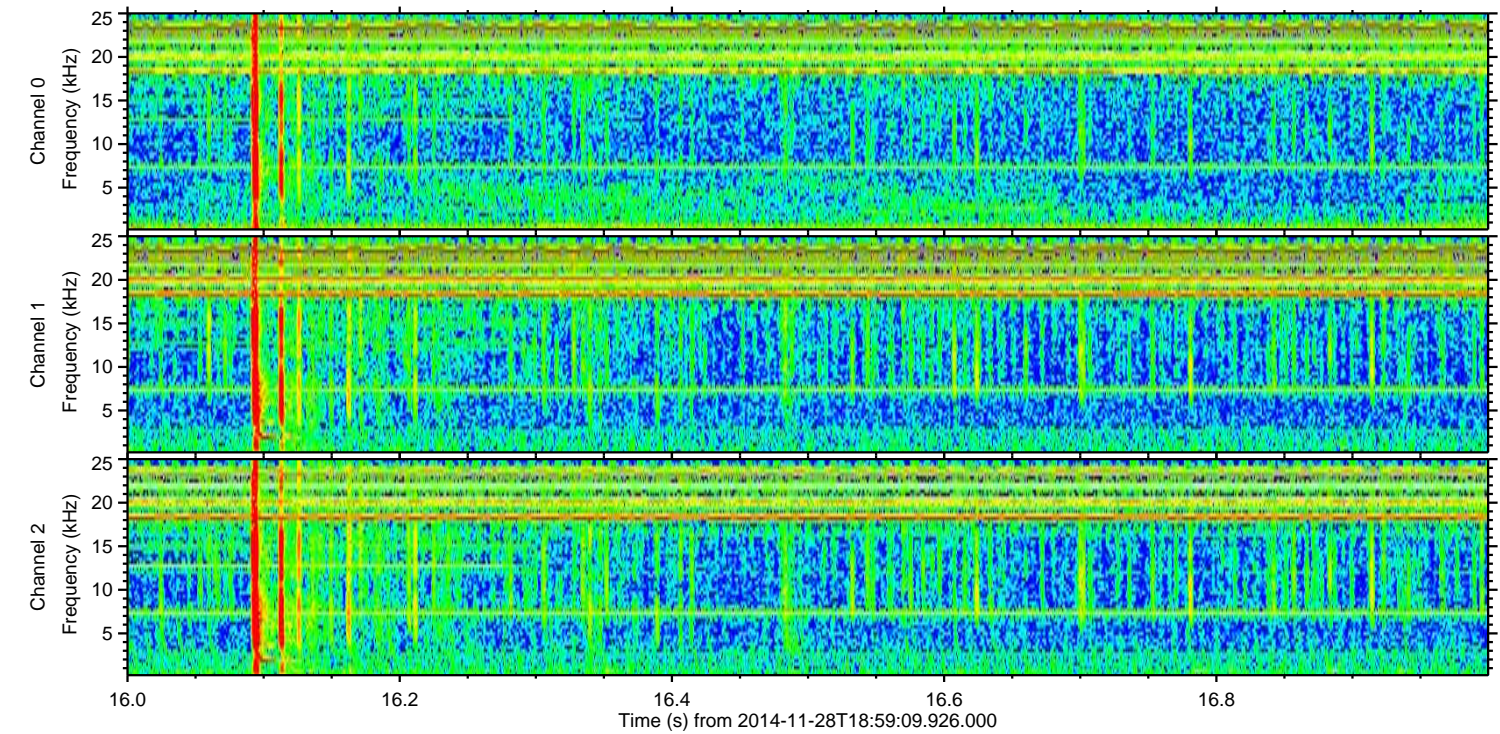
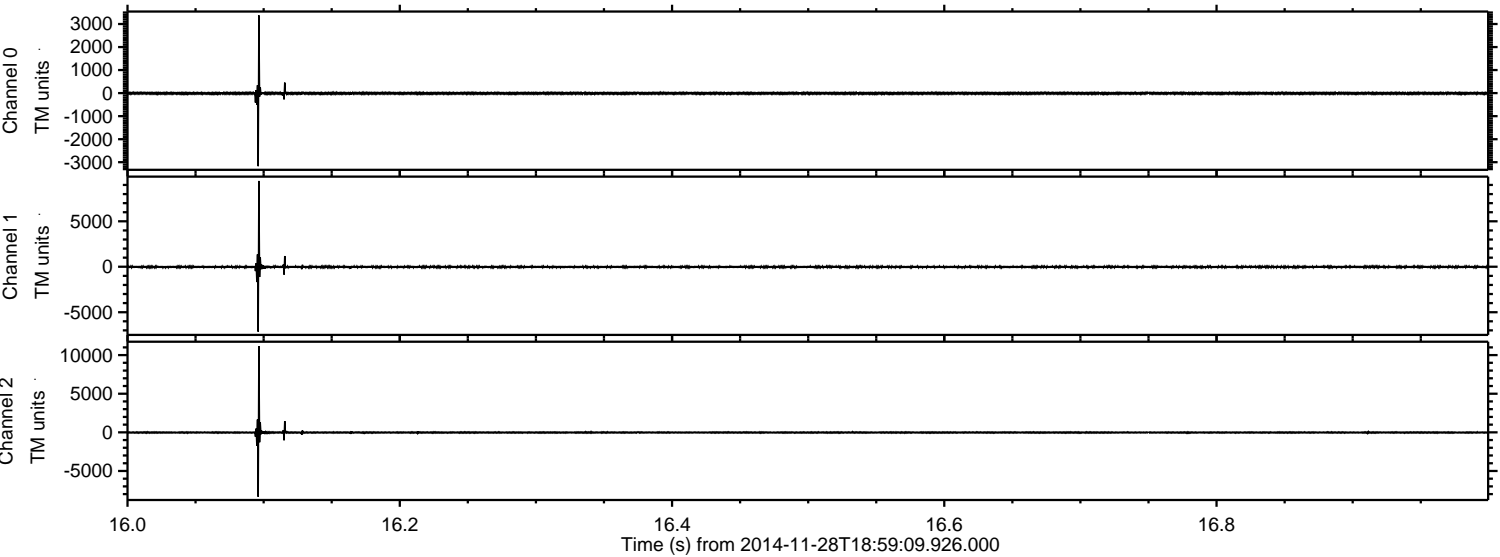
ELMAVAN 3D WAVEFORMS (Measured data sampled at 50 kHz) 49552 packets of 144 samples from 2014-11-28T18:59:09.926.000. Part 13/143

Processed Sat Nov 29 16:23:16 2014 by ELM ver.2012-10-06 from 001__elm20141128_185908__dat00.bin



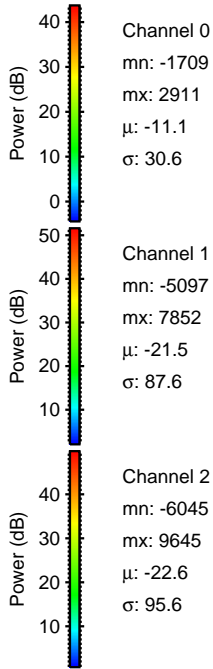
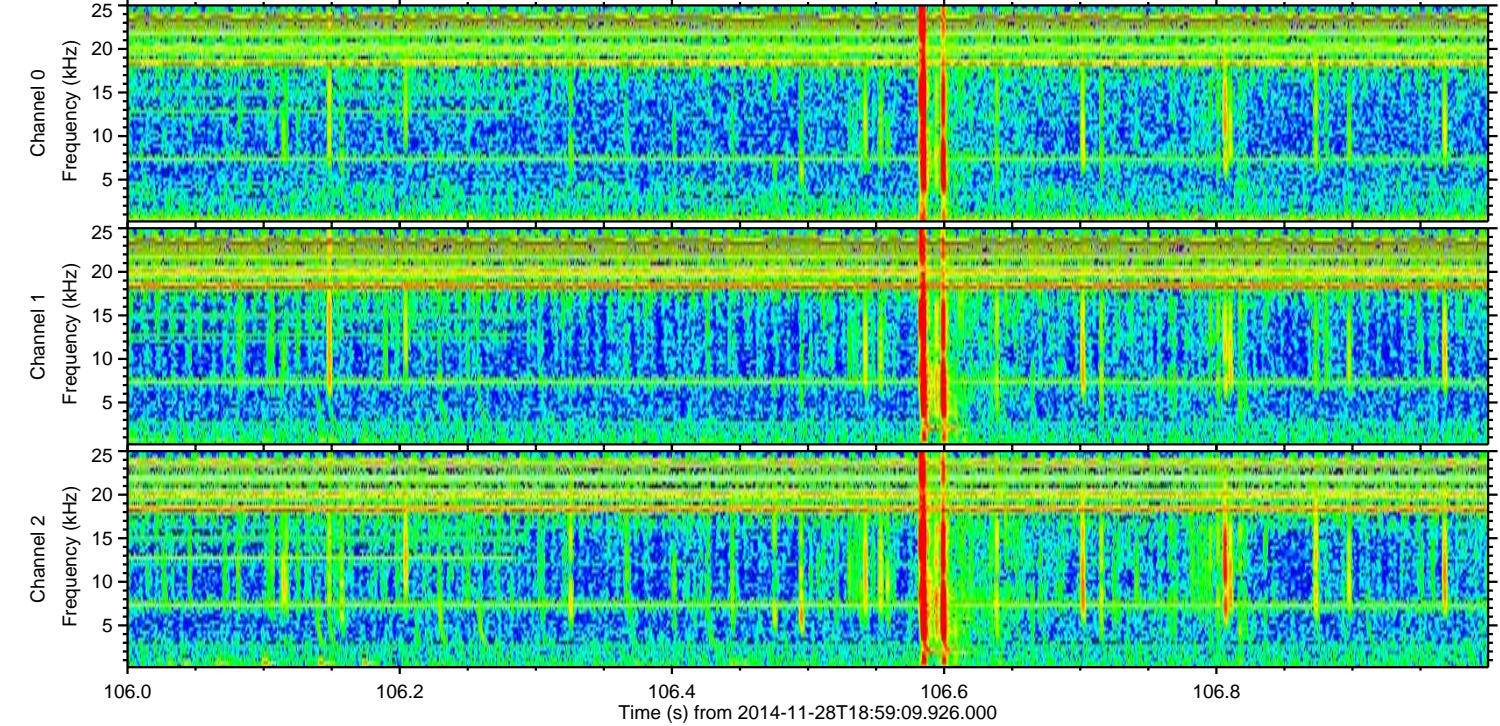
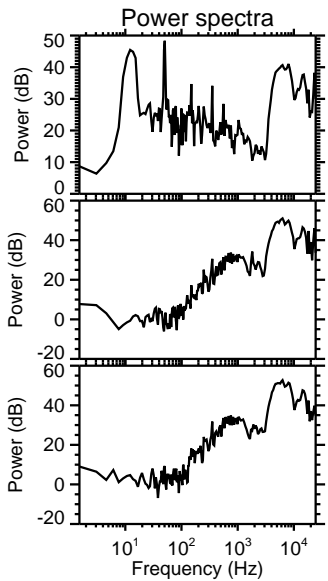
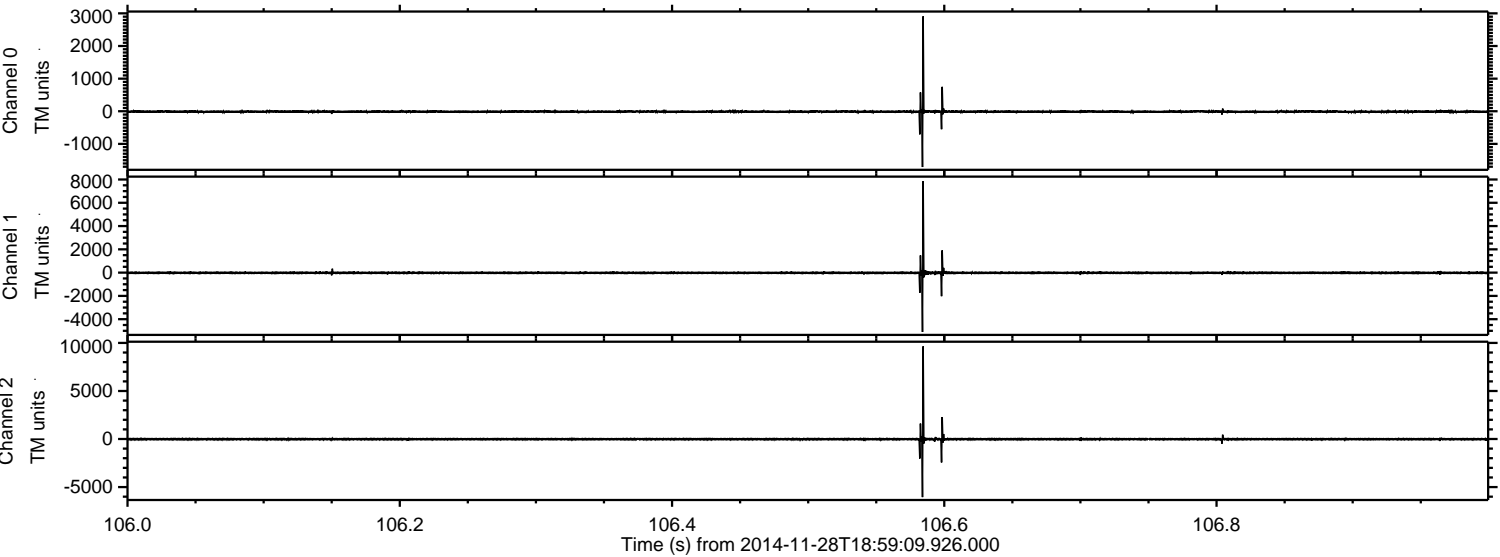
ELMAVAN 3D WAVEFORMS (Measured data sampled at 50 kHz) 49552 packets of 144 samples from 2014-11-28T18:59:09.926.000. Part 17/143

Processed Sat Nov 29 16:23:17 2014 by ELM ver.2012-10-06 from 001__elm20141128_185908__dat00.bin



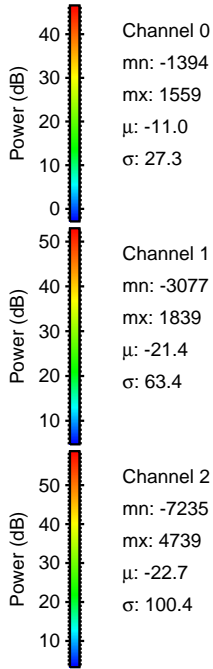
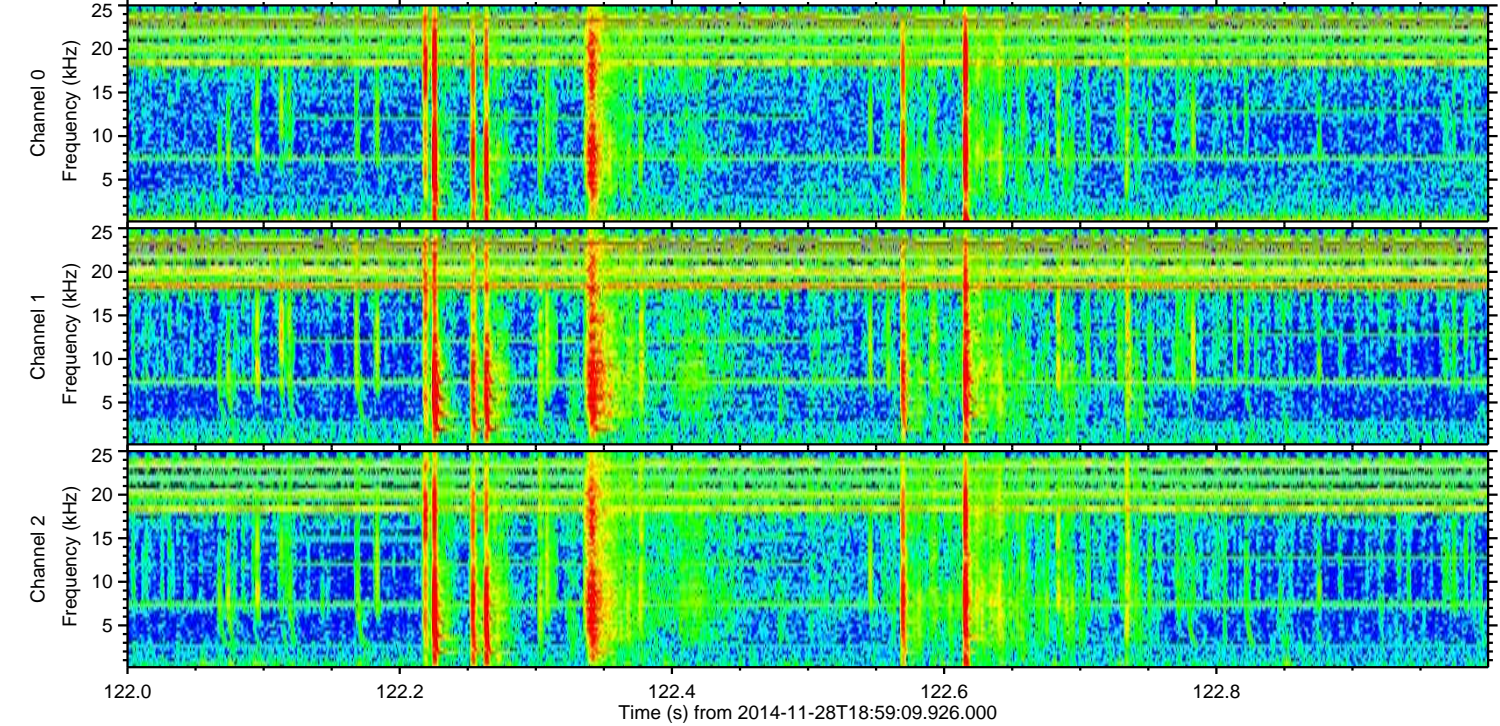
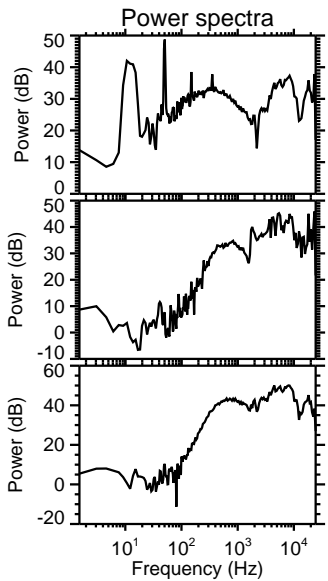
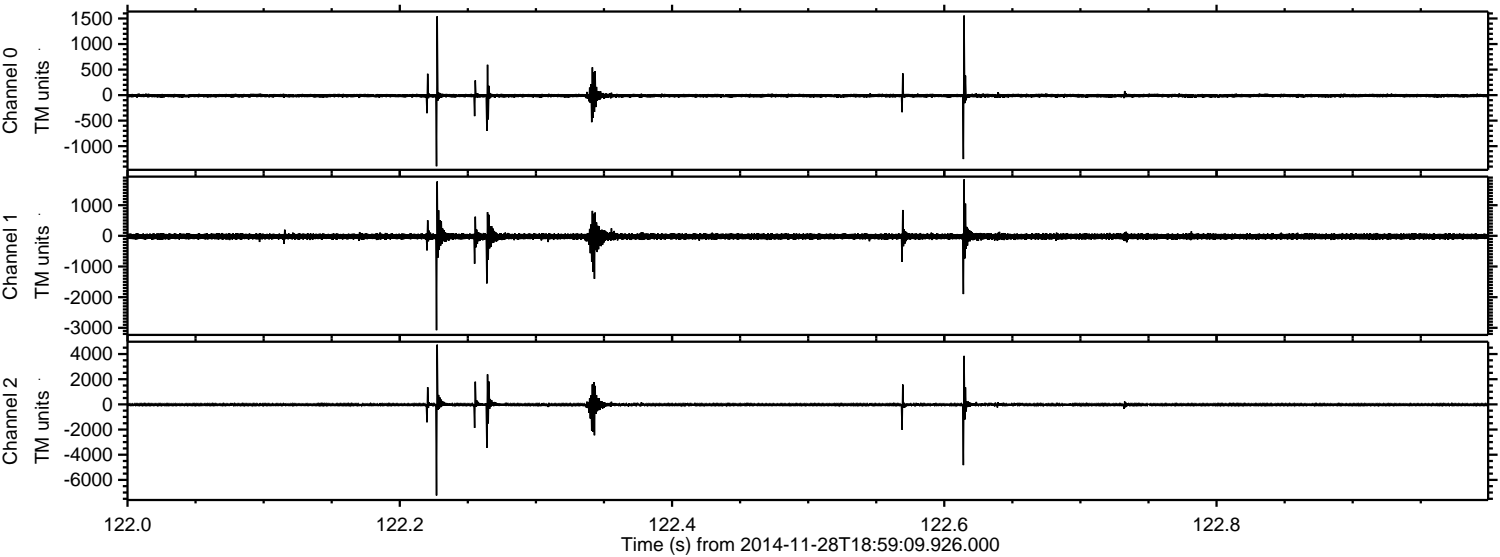
ELMAVAN 3D WAVEFORMS (Measured data sampled at 50 kHz) 49552 packets of 144 samples from 2014-11-28T18:59:09.926.000. Part 107/143

Processed Sat Nov 29 16:23:18 2014 by ELM ver.2012-10-06 from 001__elm20141128_185908__dat00.bin



ELMAVAN 3D WAVEFORMS (Measured data sampled at 50 kHz) 49552 packets of 144 samples from 2014-11-28T18:59:09.926.000. Part 123/143

Processed Sat Nov 29 16:23:19 2014 by ELM ver.2012-10-06 from 001__elm20141128_185908__dat00.bin



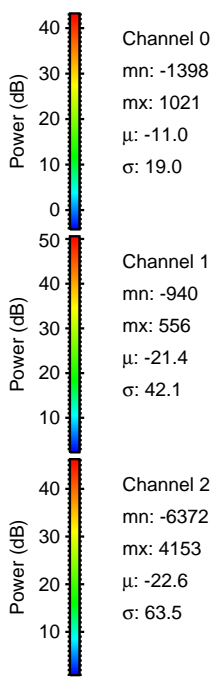
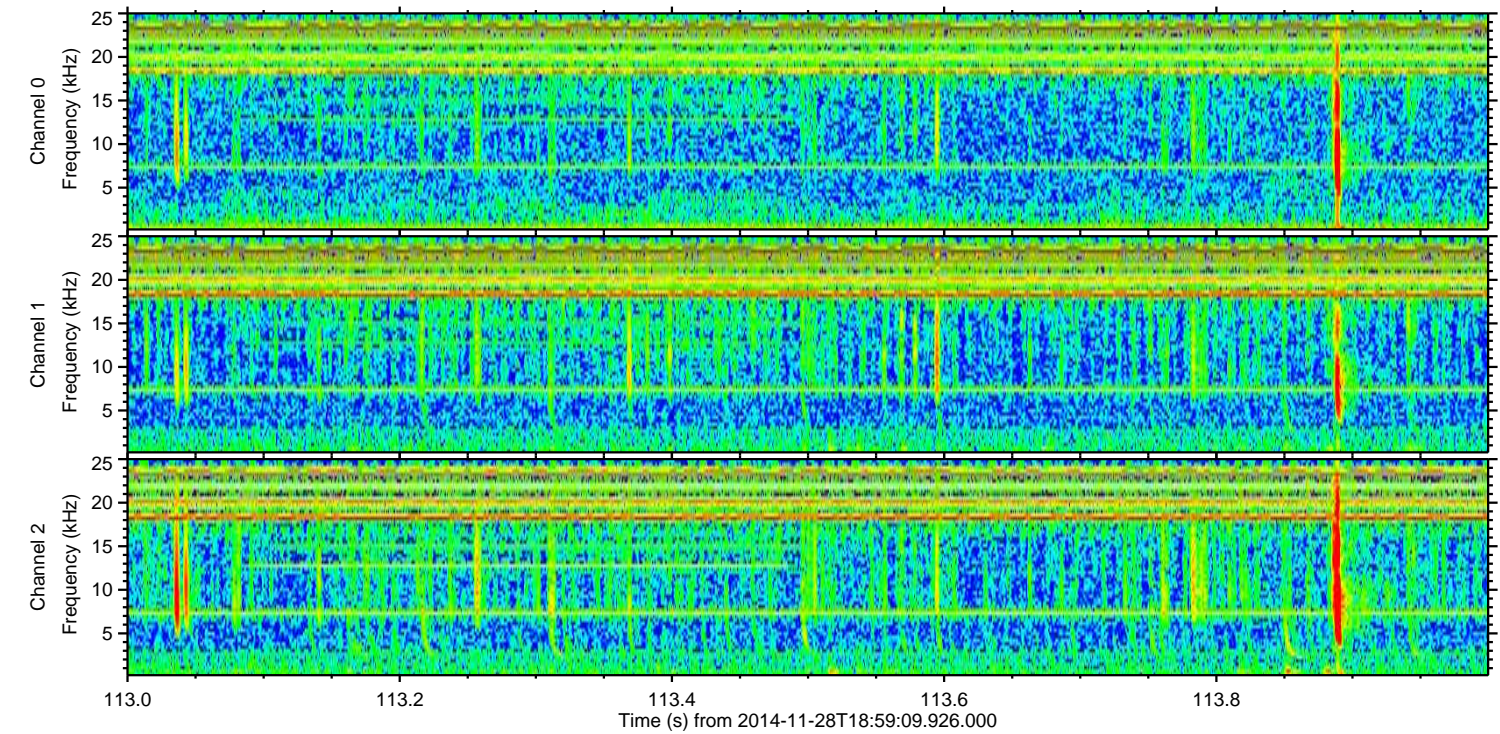
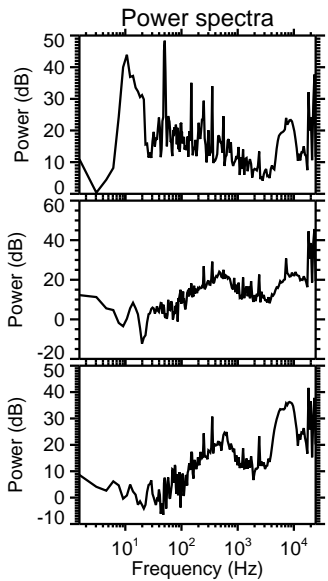
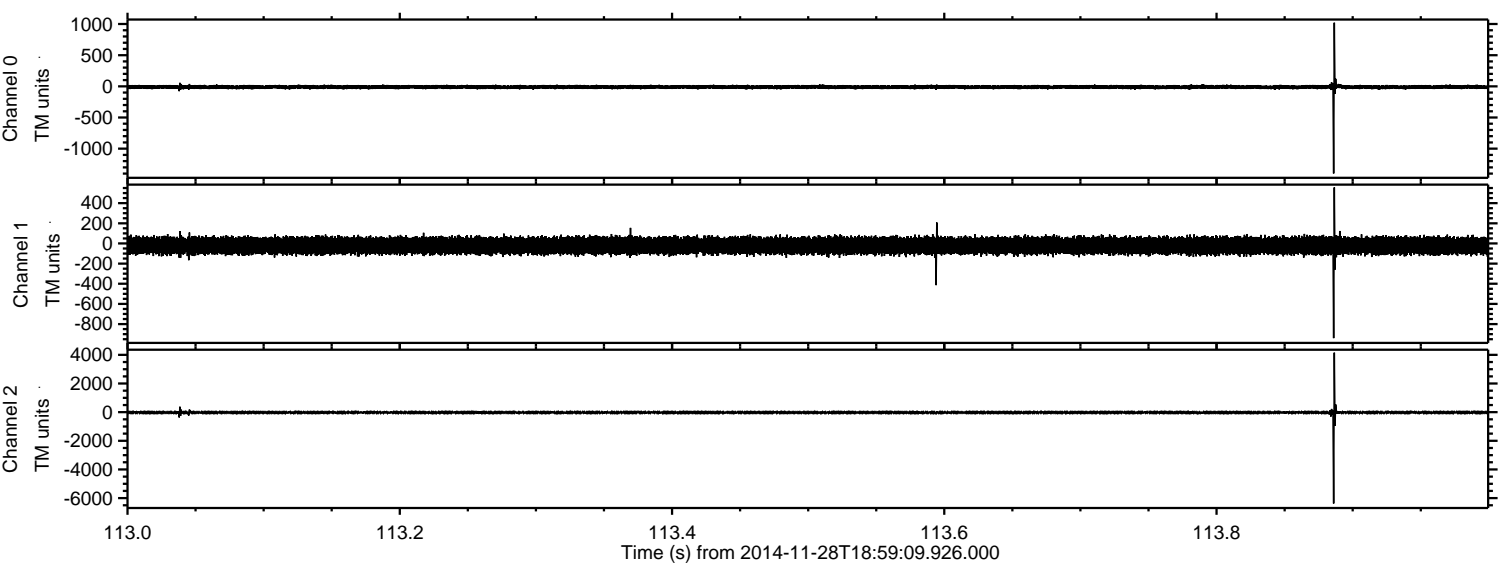
Channel 0
mn: -1394
mx: 1559
 μ : -11.0
 σ : 27.3

Channel 1
mn: -3077
mx: 1839
 μ : -21.4
 σ : 63.4

Channel 2
mn: -7235
mx: 4739
 μ : -22.7
 σ : 100.4

ELMAVAN 3D WAVEFORMS (Measured data sampled at 50 kHz) 49552 packets of 144 samples from 2014-11-28T18:59:09.926.000. Part 114/143

Processed Sat Nov 29 16:23:20 2014 by ELM ver.2012-10-06 from 001__elm20141128_185908__dat00.bin



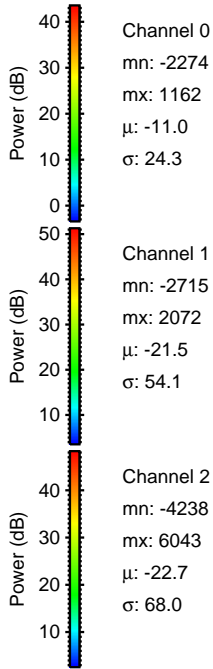
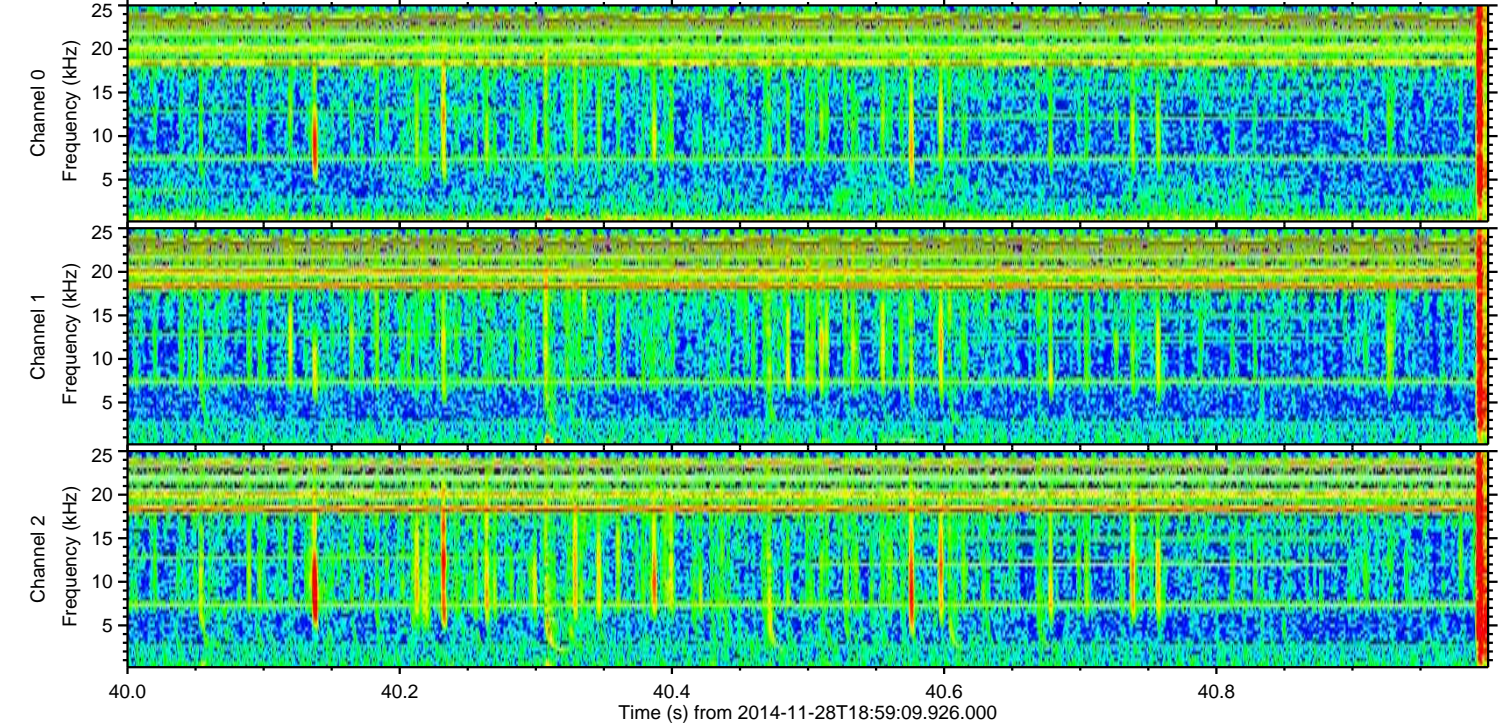
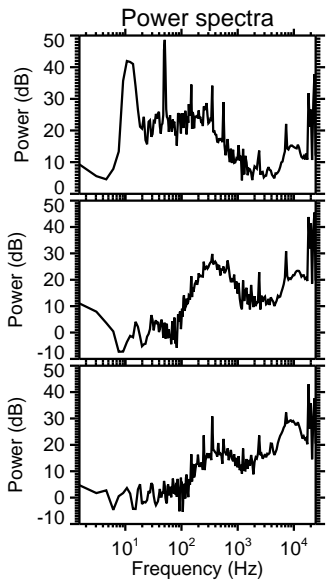
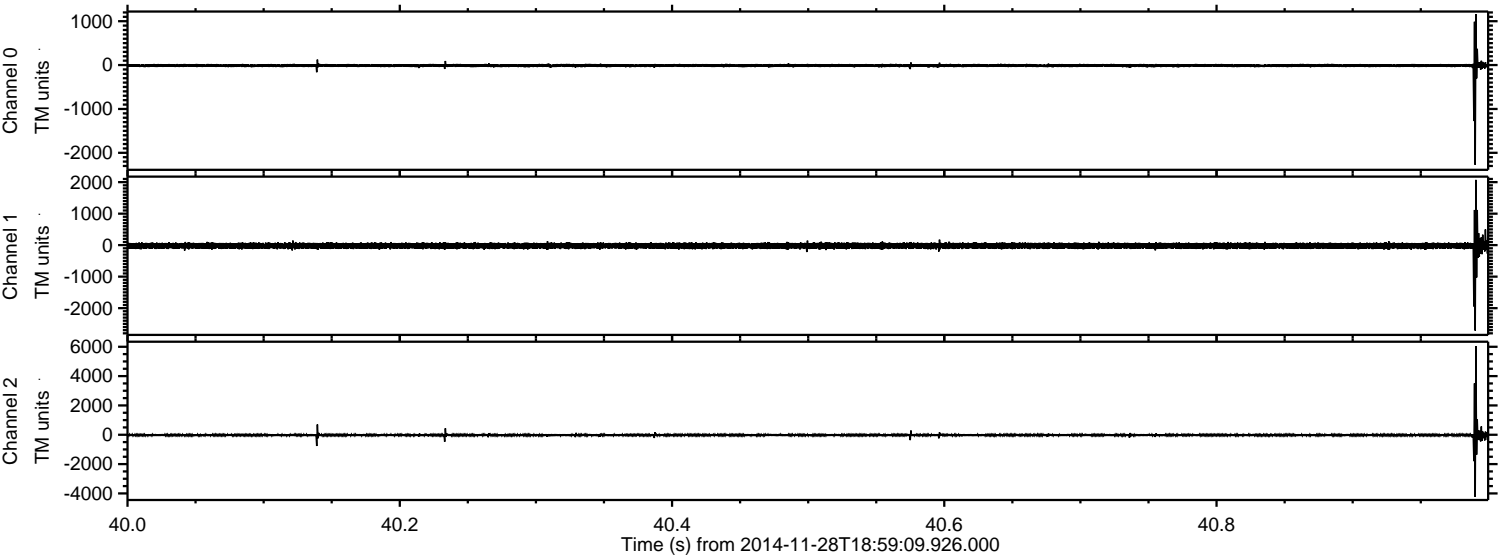
Channel 0
mn: -1398
mx: 1021
 μ : -11.0
 σ : 19.0

Channel 1
mn: -940
mx: 556
 μ : -21.4
 σ : 42.1

Channel 2
mn: -6372
mx: 4153
 μ : -22.6
 σ : 63.5

ELMAVAN 3D WAVEFORMS (Measured data sampled at 50 kHz) 49552 packets of 144 samples from 2014-11-28T18:59:09.926.000. Part 41/143

Processed Sat Nov 29 16:23:21 2014 by ELM ver.2012-10-06 from 001__elm20141128_185908__dat00.bin



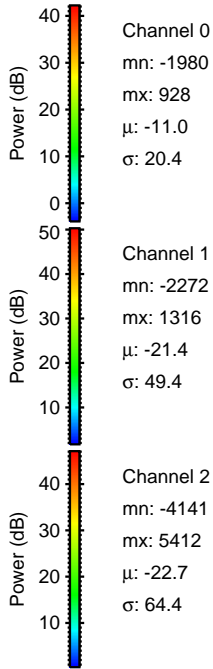
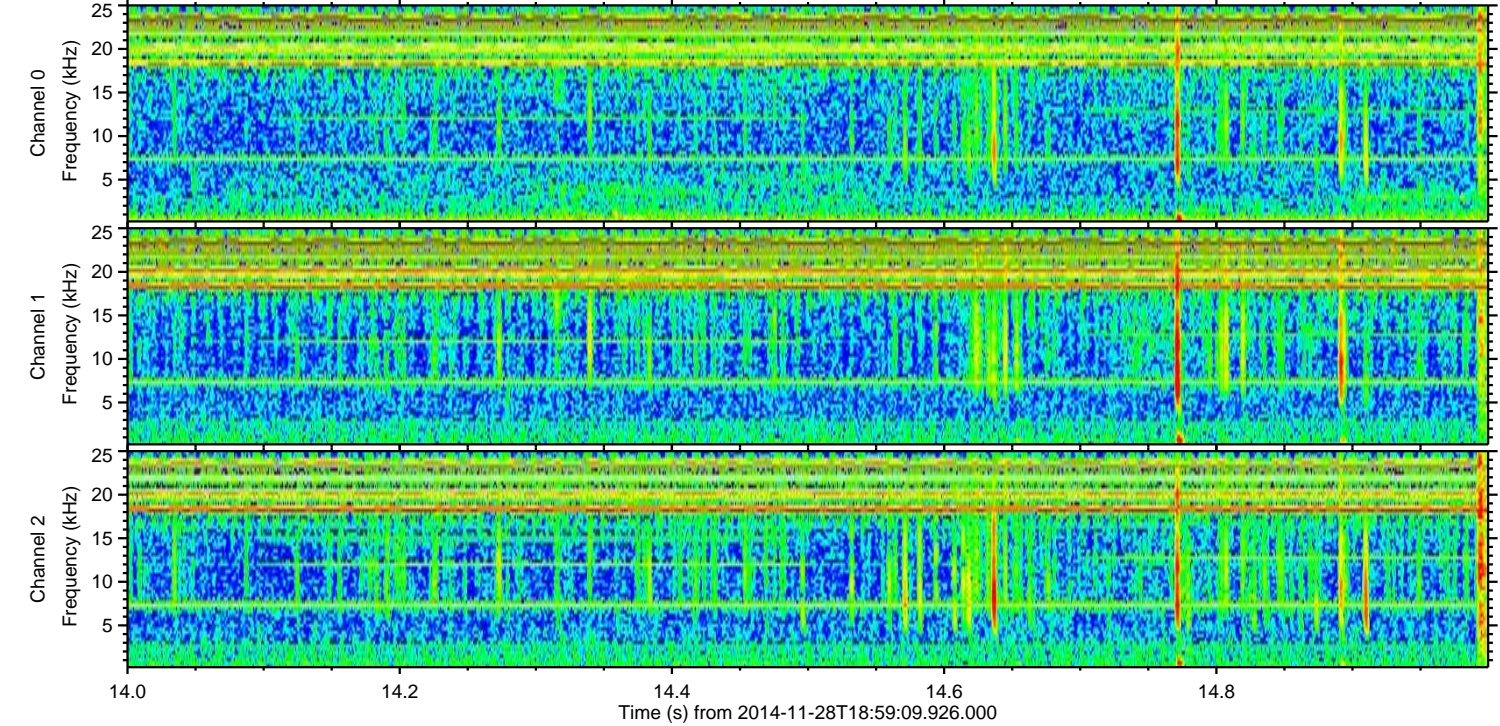
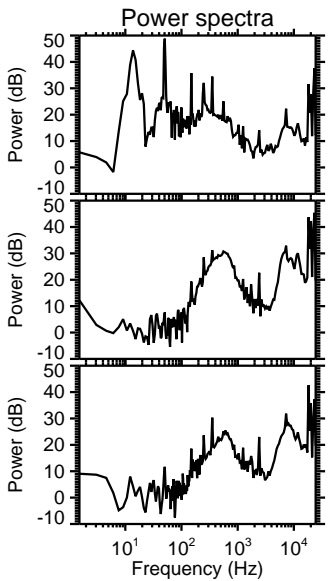
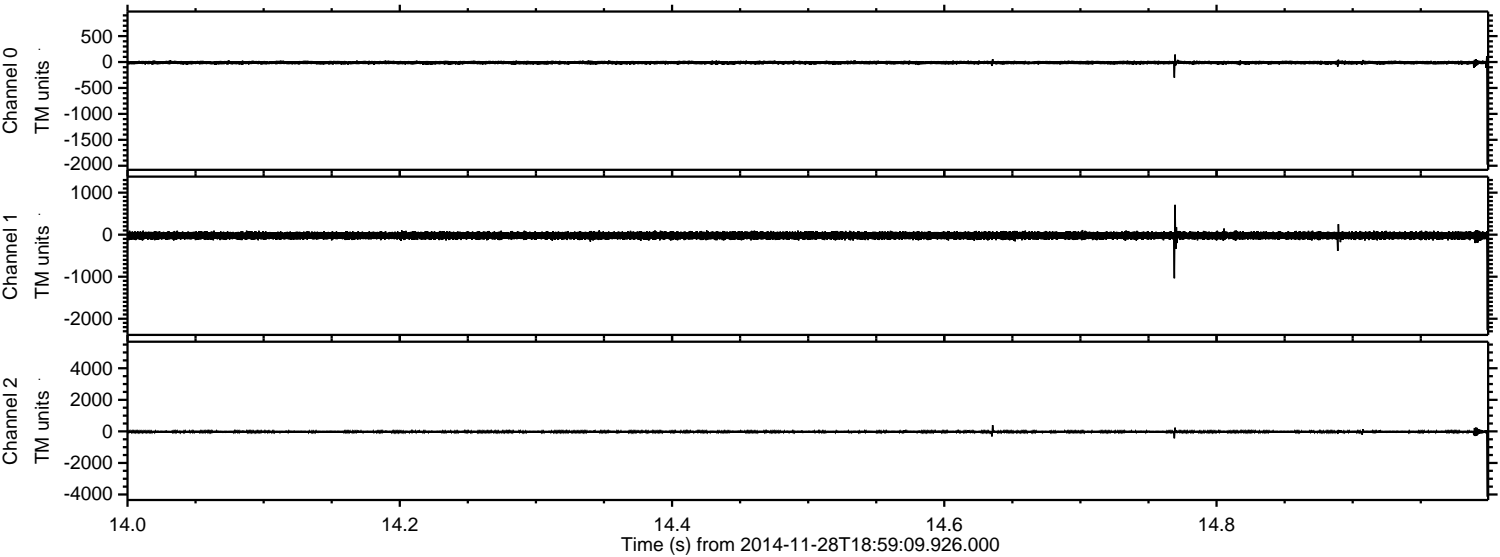
Channel 0
mn: -2274
mx: 1162
 μ : -11.0
 σ : 24.3

Channel 1
mn: -2715
mx: 2072
 μ : -21.5
 σ : 54.1

Channel 2
mn: -4238
mx: 6043
 μ : -22.7
 σ : 68.0

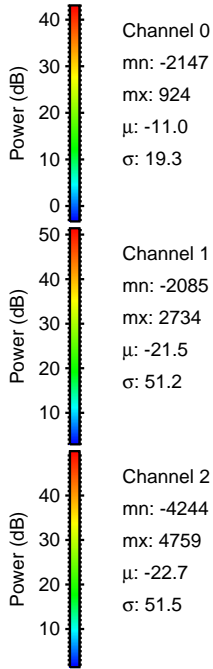
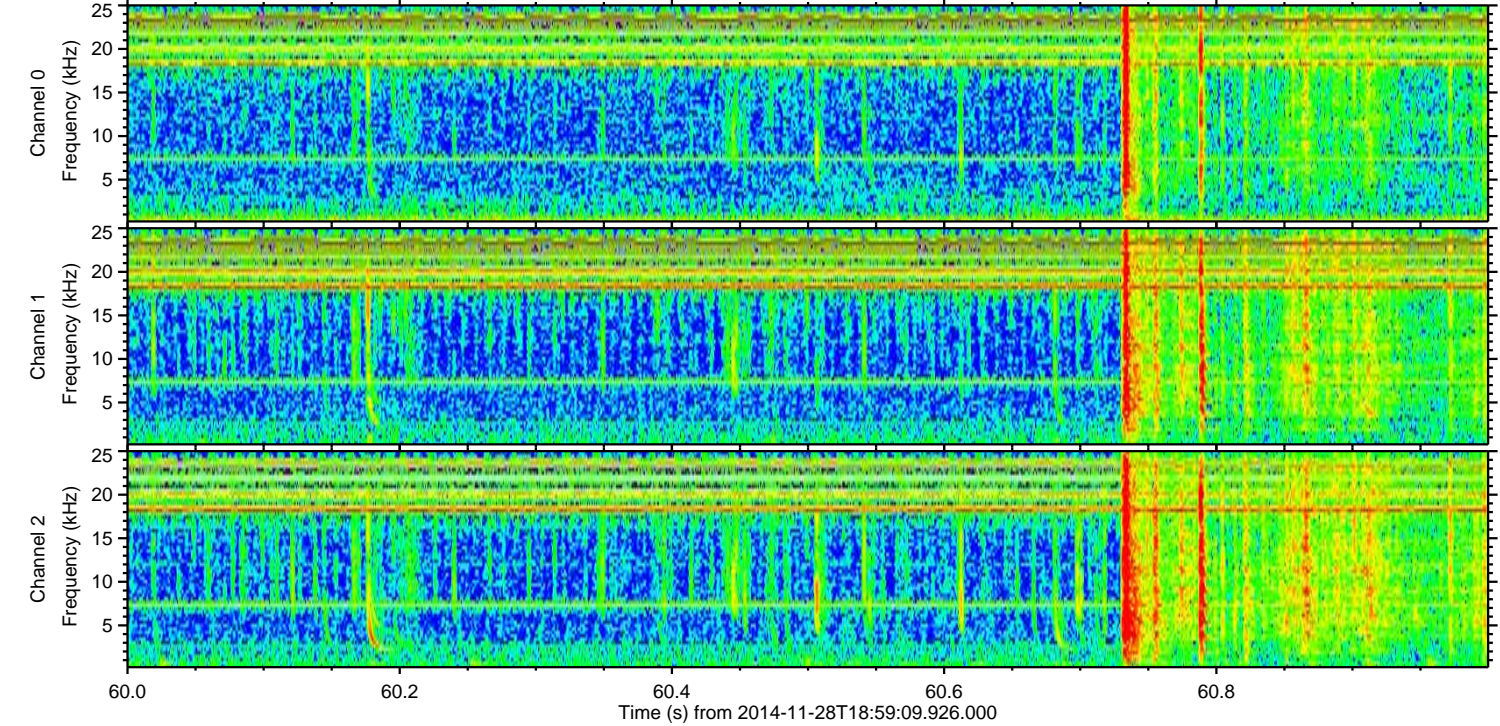
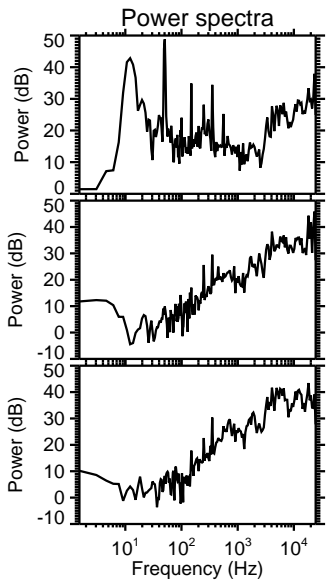
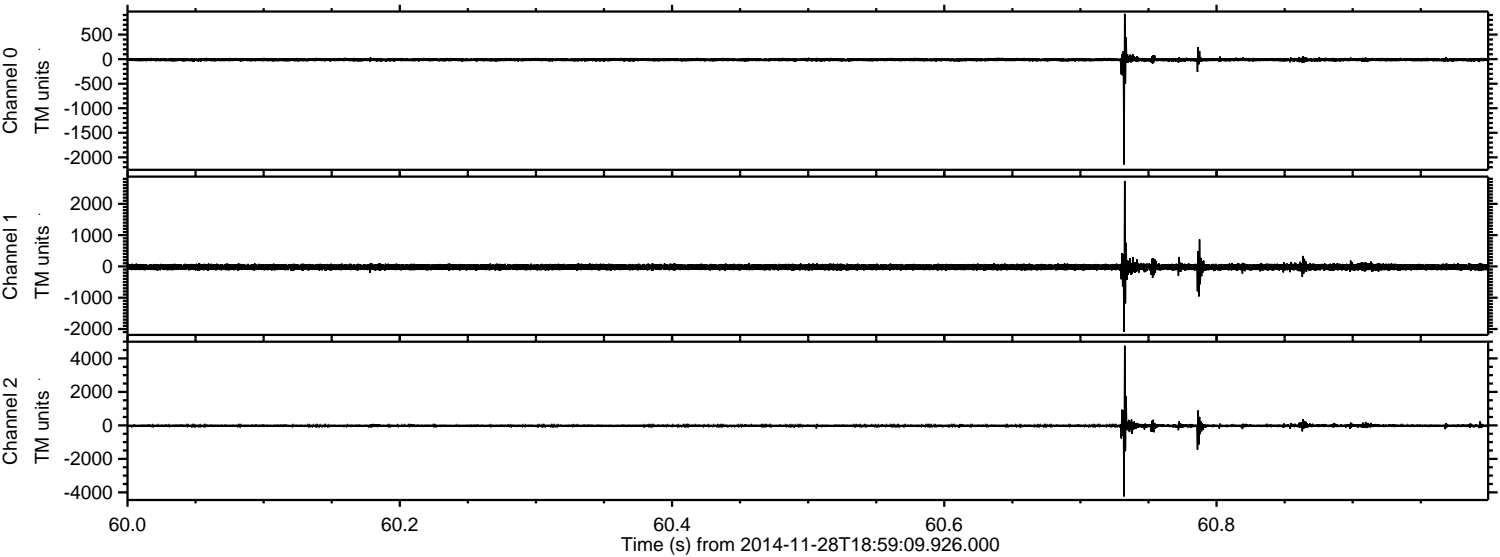
ELMAVAN 3D WAVEFORMS (Measured data sampled at 50 kHz) 49552 packets of 144 samples from 2014-11-28T18:59:09.926.000. Part 15/143

Processed Sat Nov 29 16:23:22 2014 by ELM ver.2012-10-06 from 001__elm20141128_185908__dat00.bin



ELMAVAN 3D WAVEFORMS (Measured data sampled at 50 kHz) 49552 packets of 144 samples from 2014-11-28T18:59:09.926.000. Part 61/143

Processed Sat Nov 29 16:23:23 2014 by ELM ver.2012-10-06 from 001__elm20141128_185908__dat00.bin

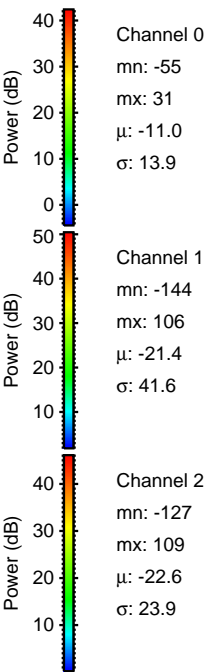
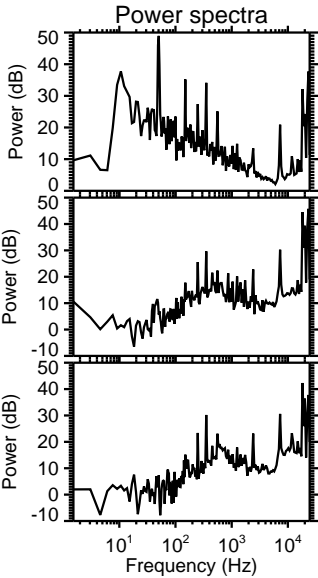
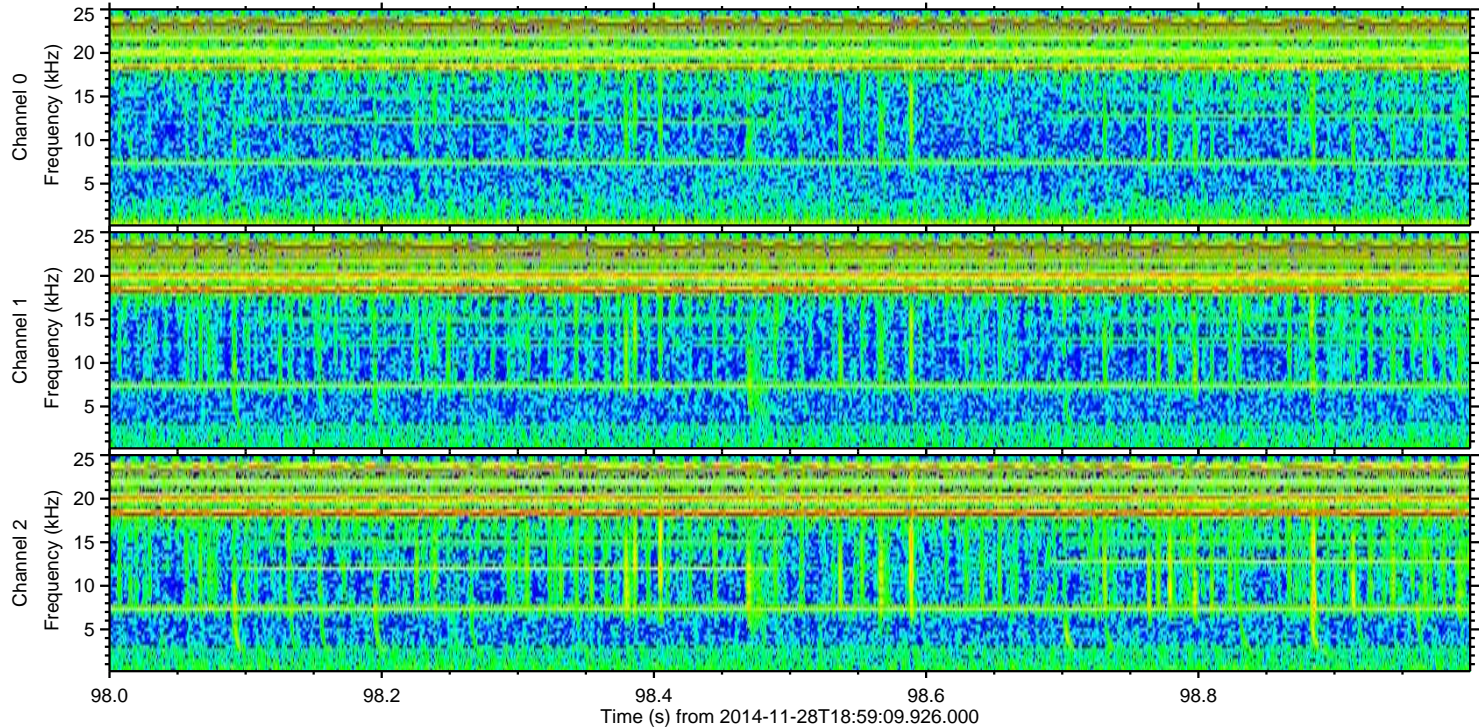
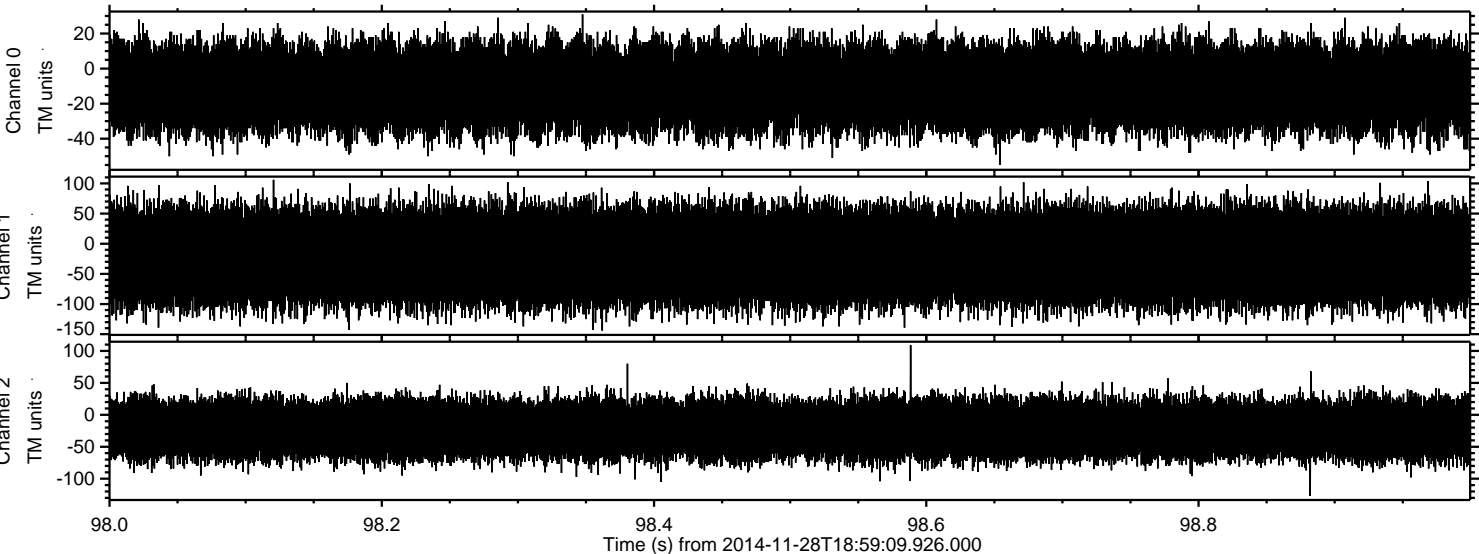


Channel 0
mn: -2147
mx: 924
 μ : -11.0
 σ : 19.3

Channel 1
mn: -2085
mx: 2734
 μ : -21.5
 σ : 51.2

Channel 2
mn: -4244
mx: 4759
 μ : -22.7
 σ : 51.5

Processed Sat Nov 29 16:23:24 2014 by ELM ver.2012-10-06 from 001__elm20141128_185908__dat00.bin



Channel 0
mn: -55
mx: 31
 μ : -11.0
 σ : 13.9

Channel 1
mn: -144
mx: 106
 μ : -21.4
 σ : 41.6

Channel 2
mn: -127
mx: 109
 μ : -22.6
 σ : 23.9