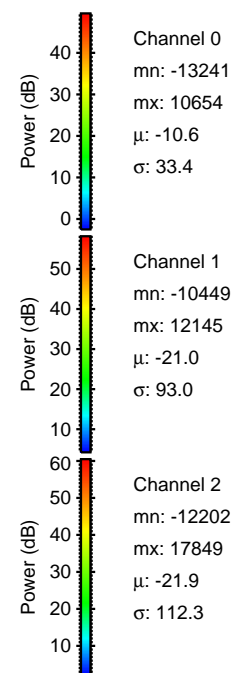
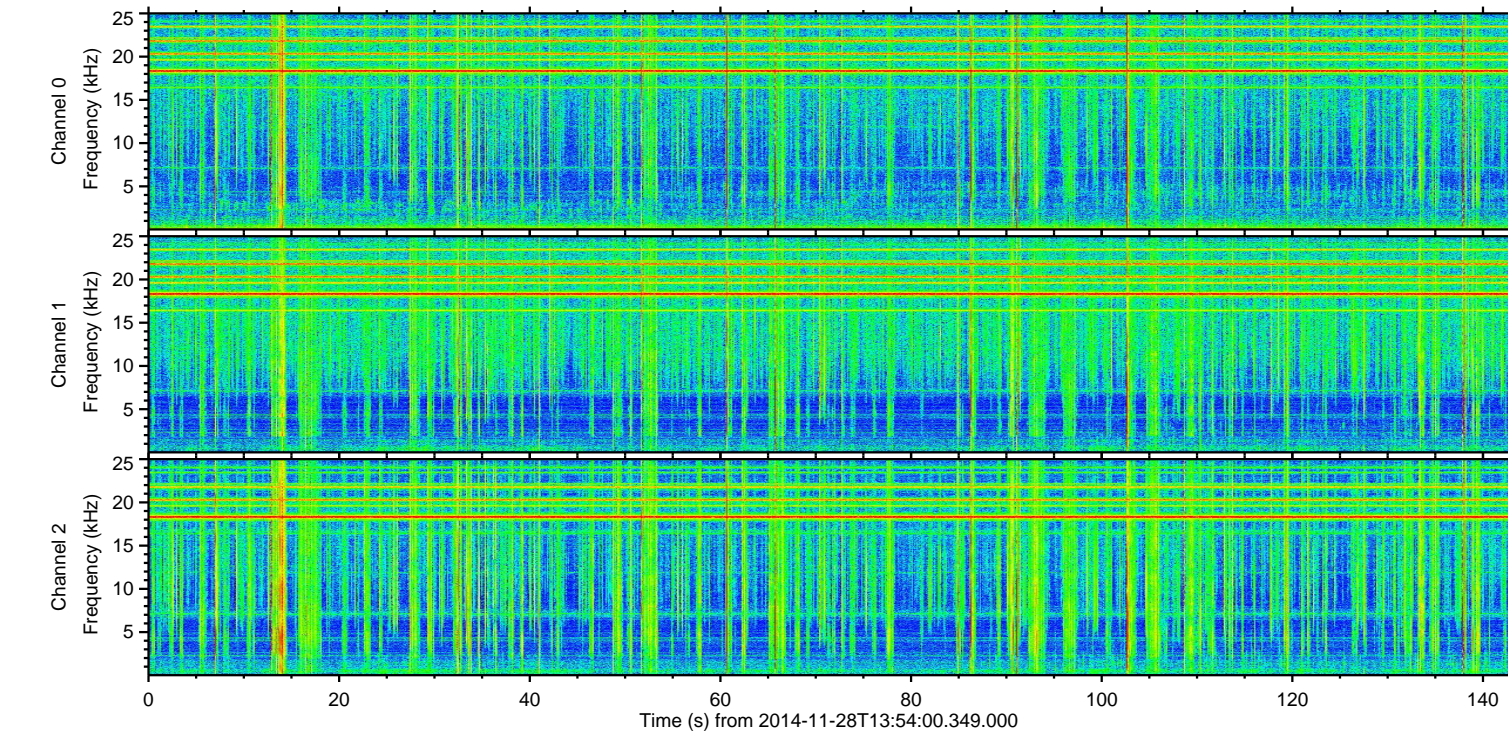
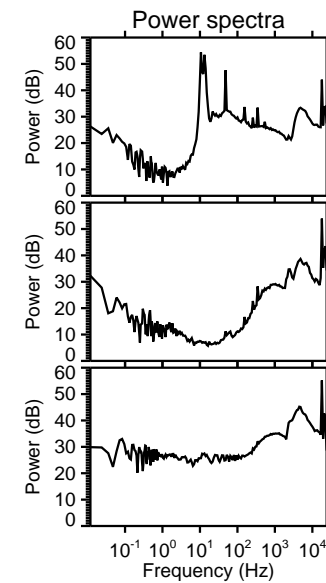
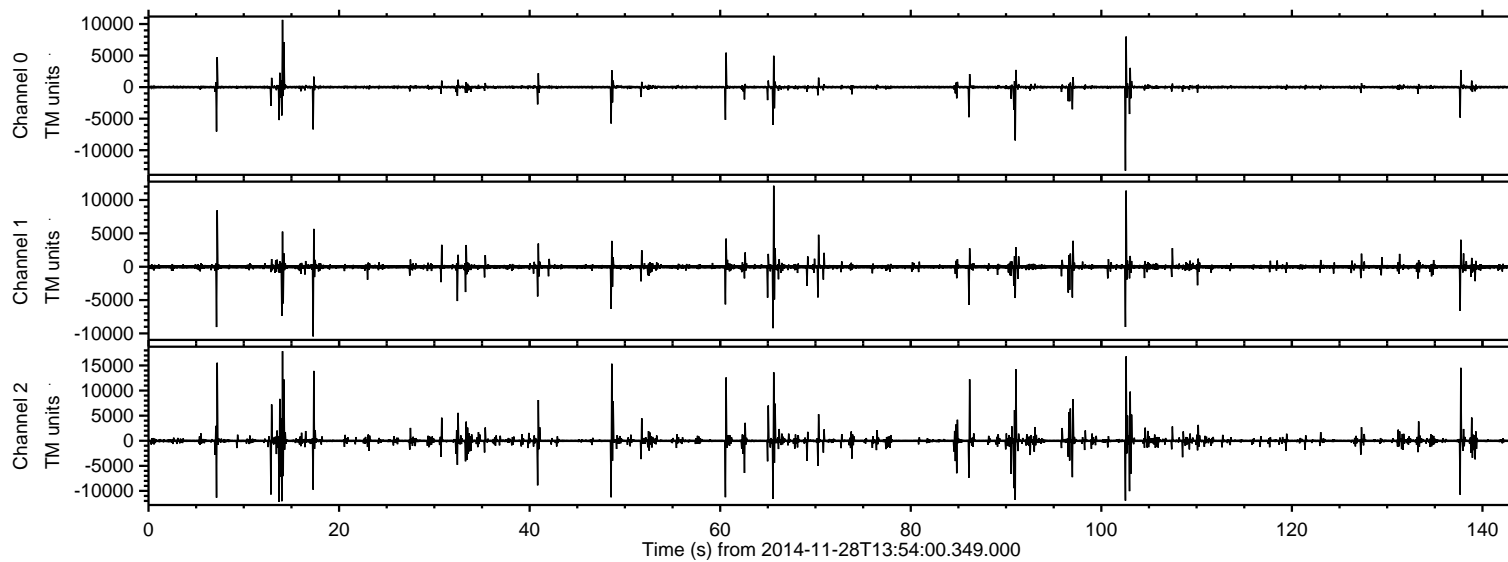


# ELMAVAN 3D WAVEFORMS (Measured data sampled at 50 kHz) 49584 packets of 144 samples from 2014-11-28T13:54:00.349.000.

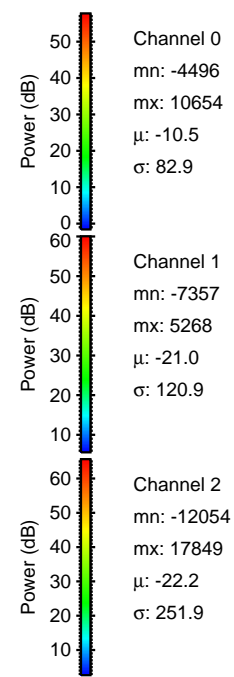
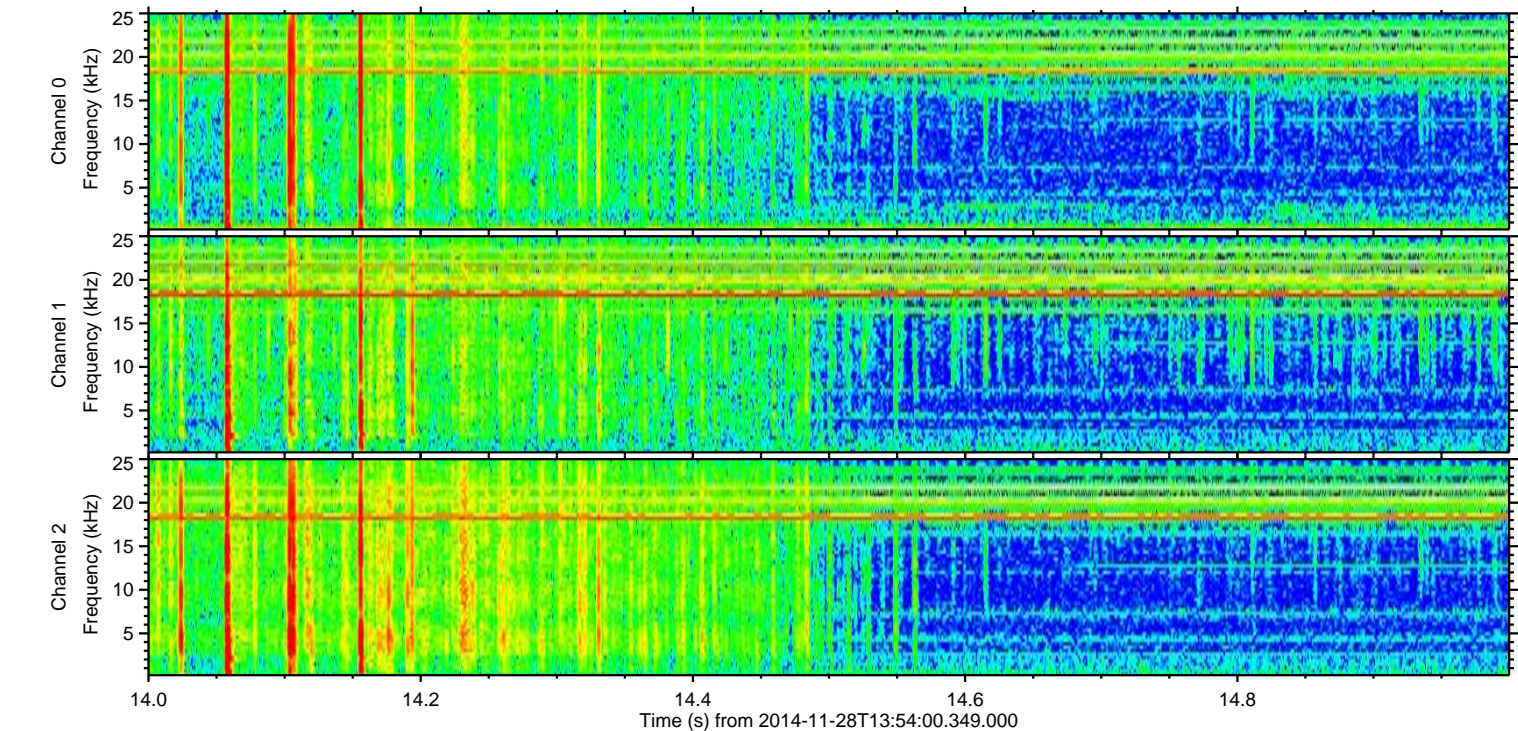
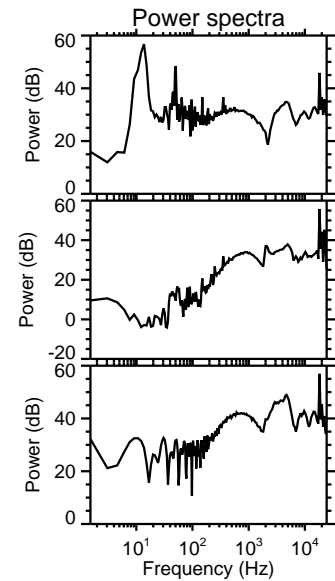
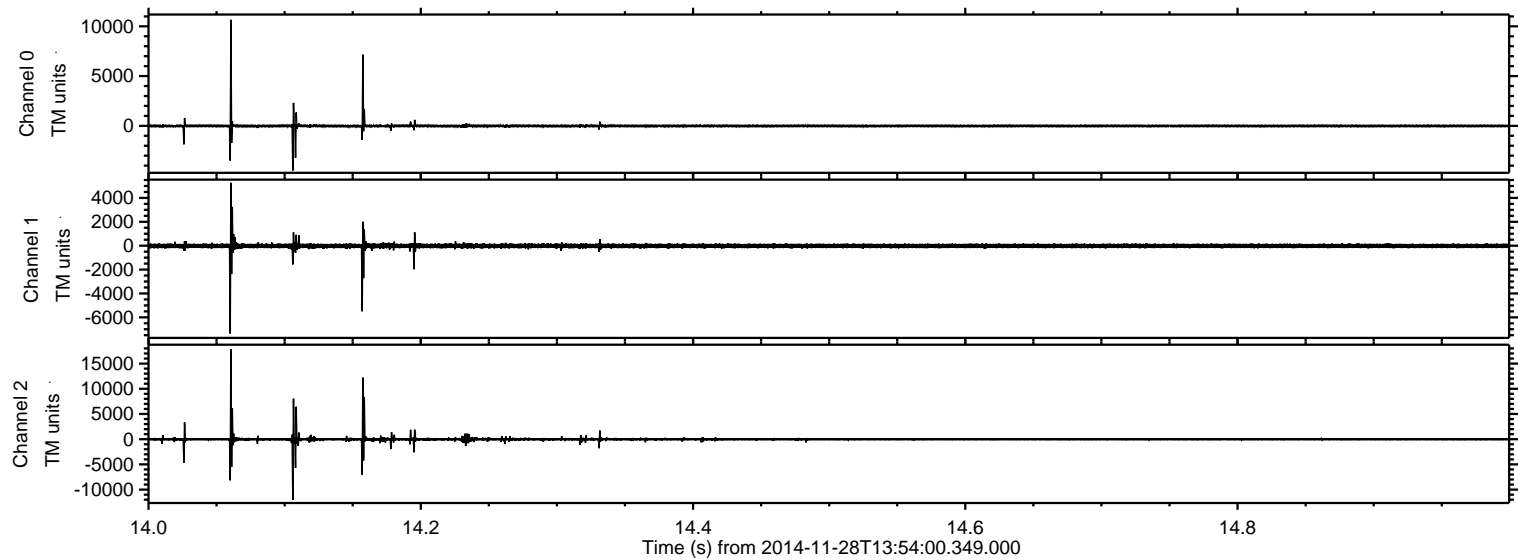
Processed Sat Nov 29 10:45:55 2014 by ELM ver.2012-10-06 from 001\_\_elm20141128\_135359\_\_dat00.bin





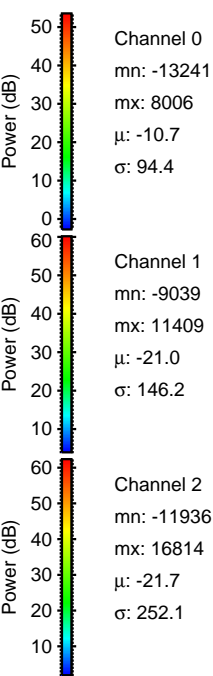
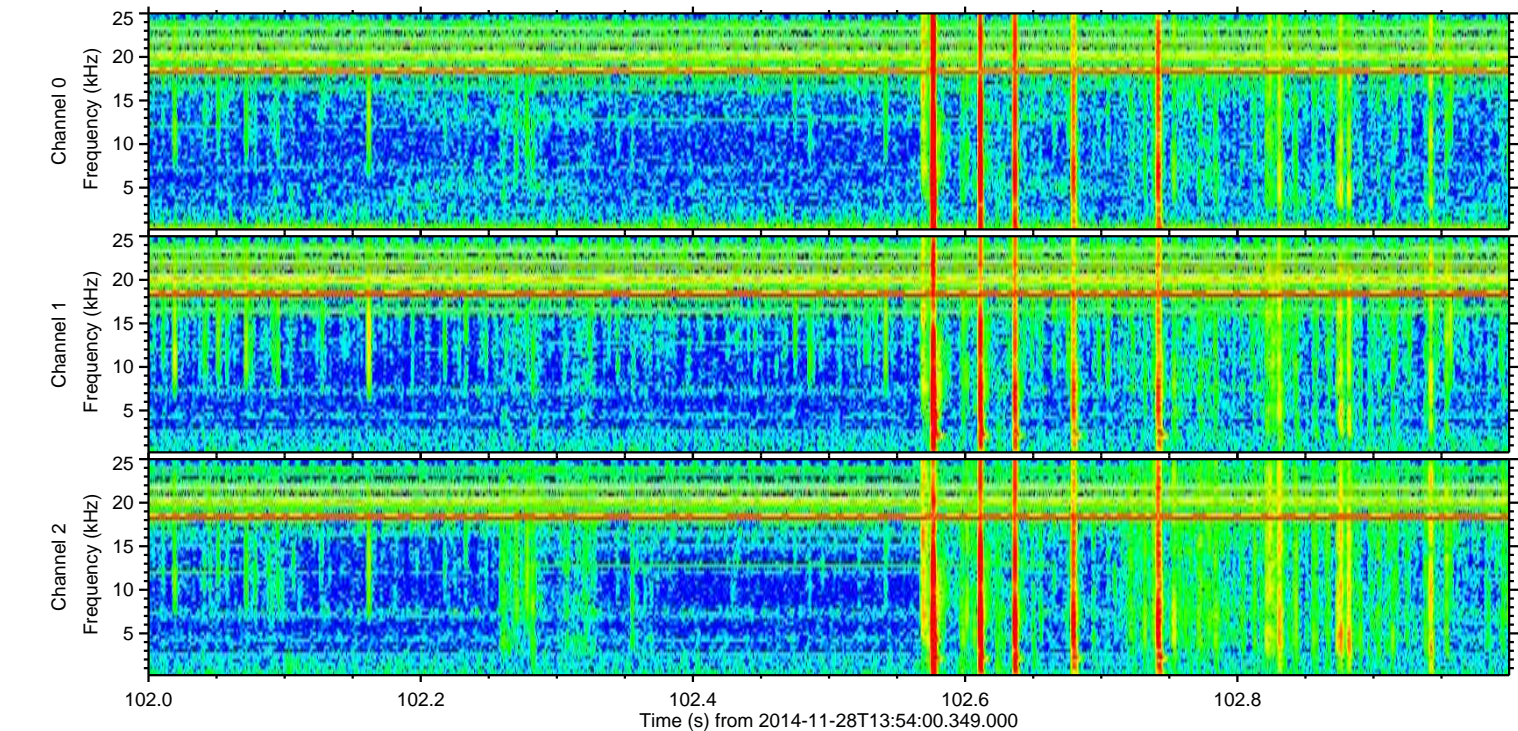
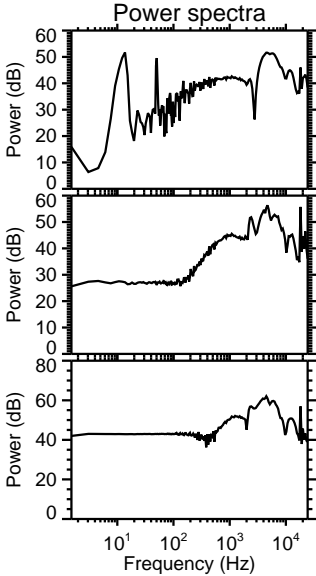
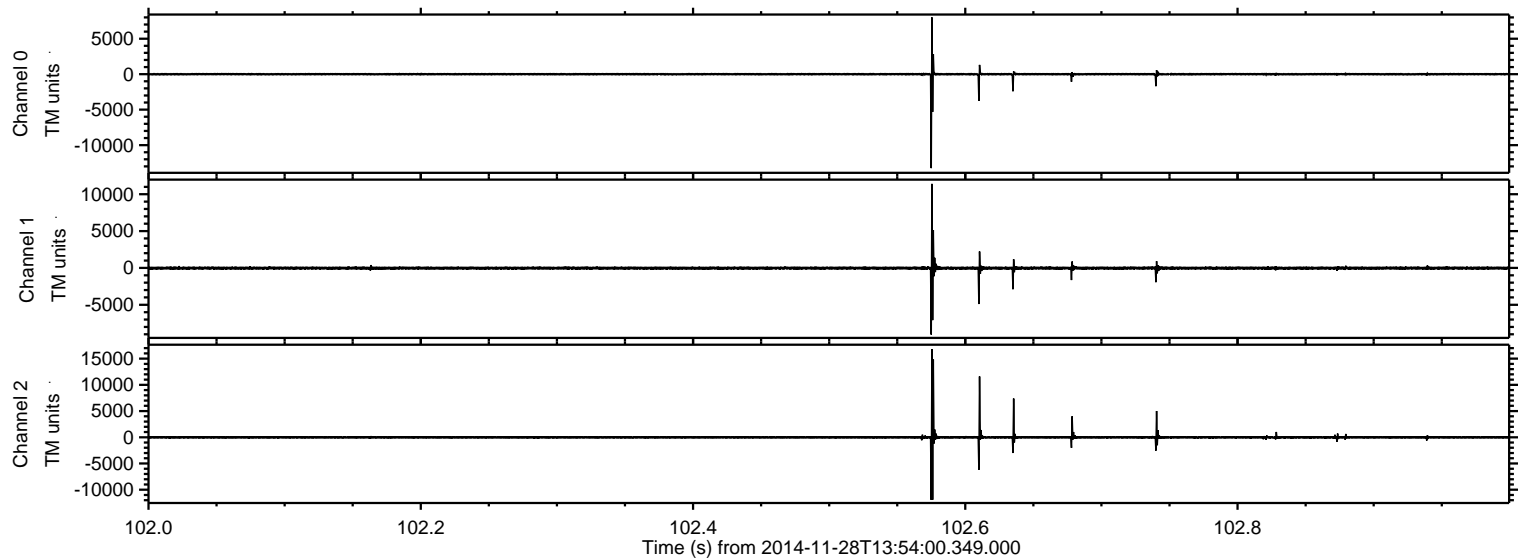
ELMAVAN 3D WAVEFORMS (Measured data sampled at 50 kHz) 49584 packets of 144 samples from 2014-11-28T13:54:00.349.000. Part 15/143

Processed Sat Nov 29 10:46:10 2014 by ELM ver.2012-10-06 from 001\_\_elm20141128\_135359\_\_dat00.bin



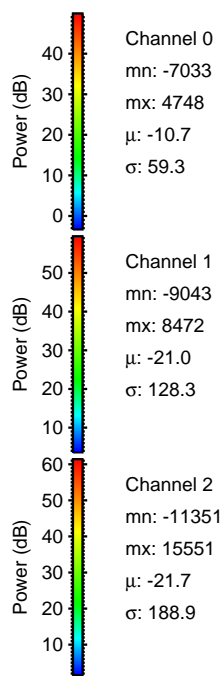
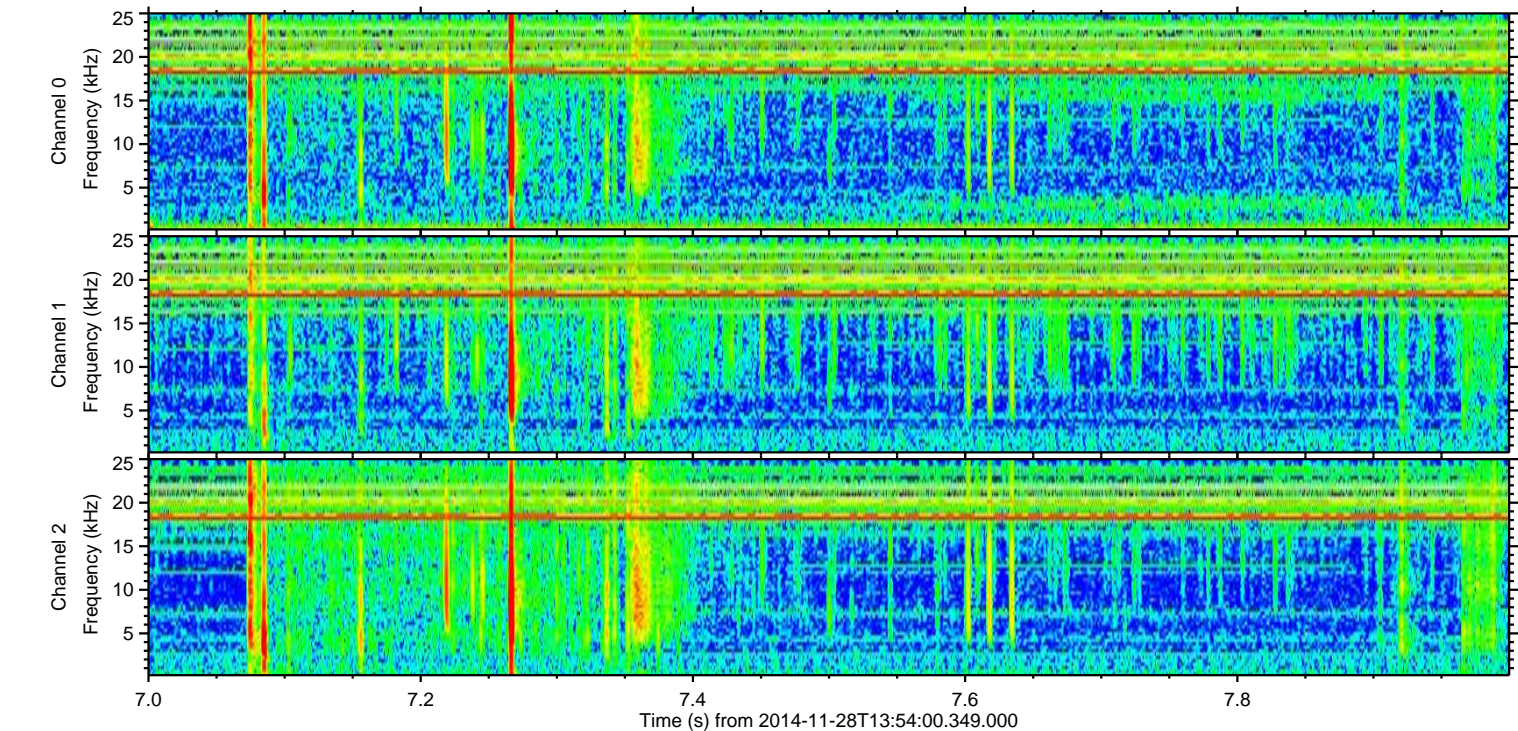
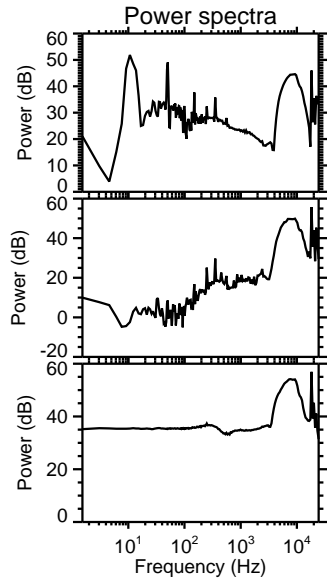
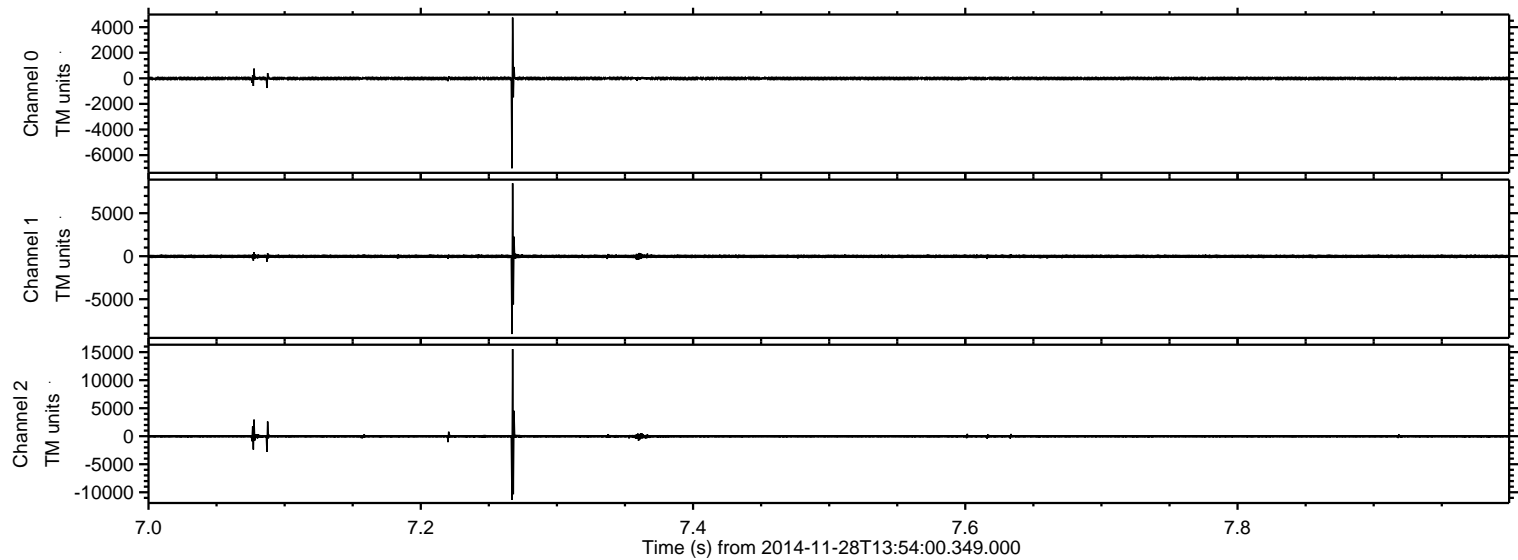
ELMAVAN 3D WAVEFORMS (Measured data sampled at 50 kHz) 49584 packets of 144 samples from 2014-11-28T13:54:00.349.000. Part 103/143

Processed Sat Nov 29 10:46:11 2014 by ELM ver.2012-10-06 from 001\_\_elm20141128\_135359\_\_dat00.bin





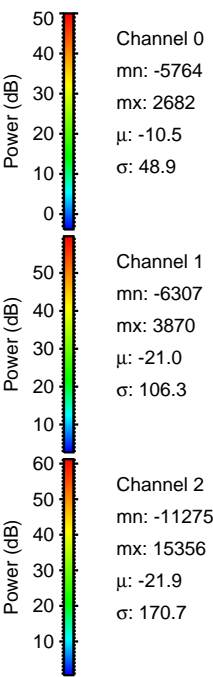
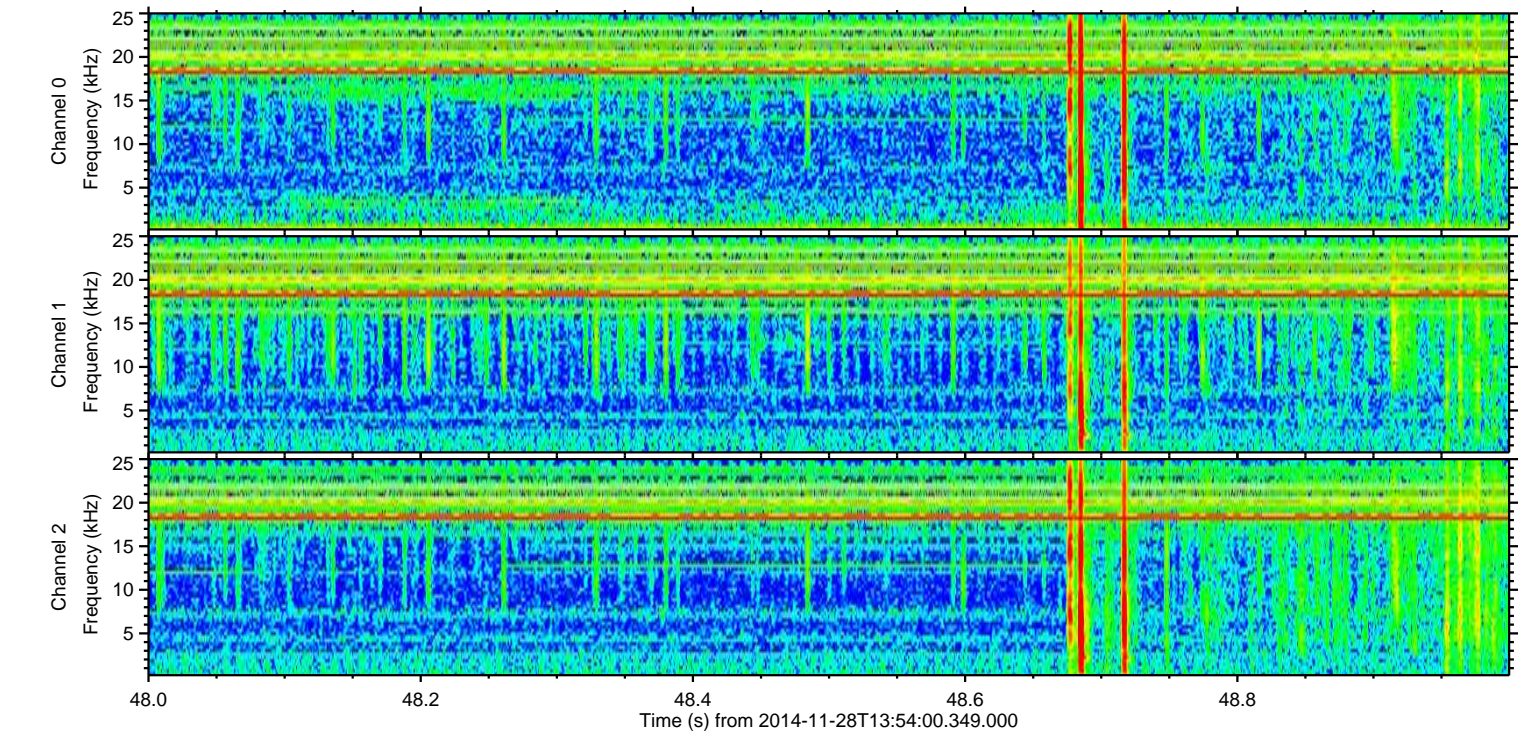
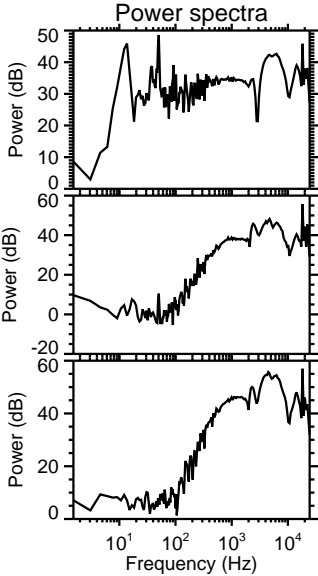
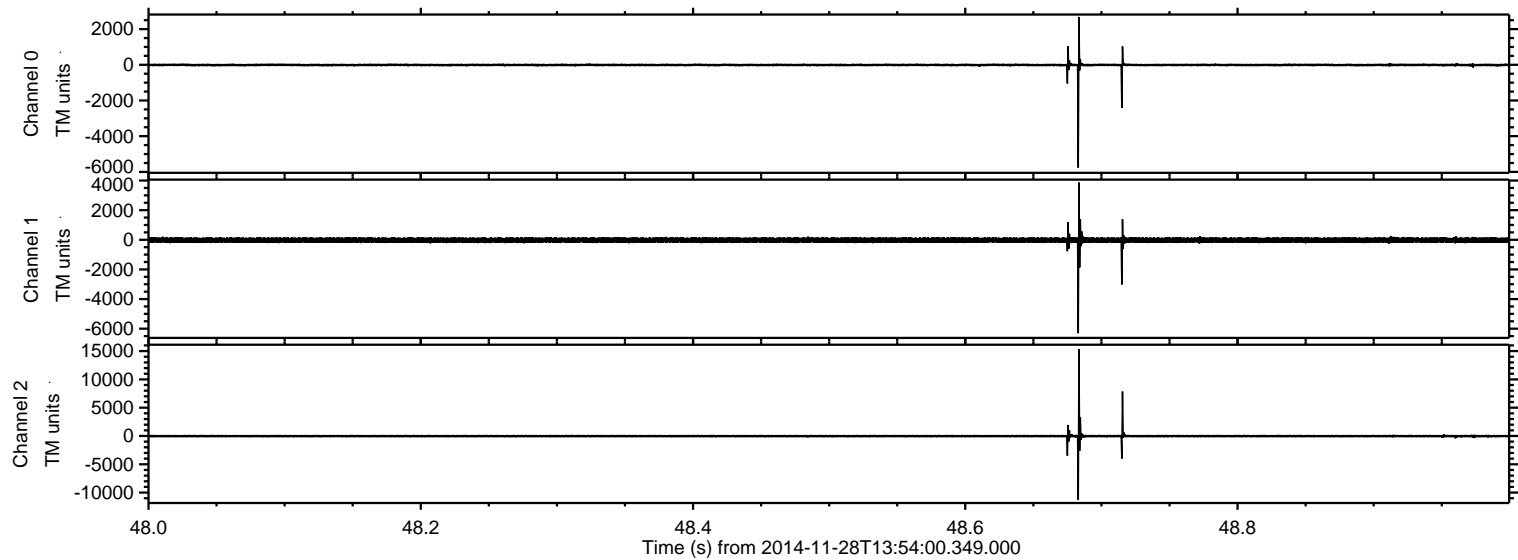
Processed Sat Nov 29 10:46:12 2014 by ELM ver.2012-10-06 from 001\_\_elm20141128\_135359\_\_dat00.bin





ELMAVAN 3D WAVEFORMS (Measured data sampled at 50 kHz) 49584 packets of 144 samples from 2014-11-28T13:54:00.349.000. Part 49/143

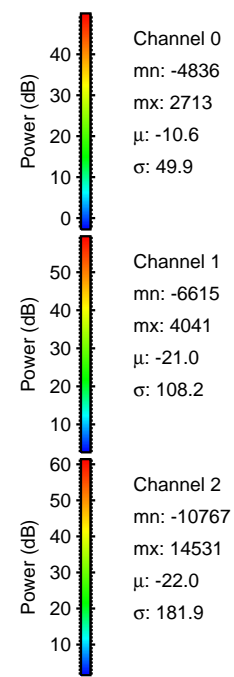
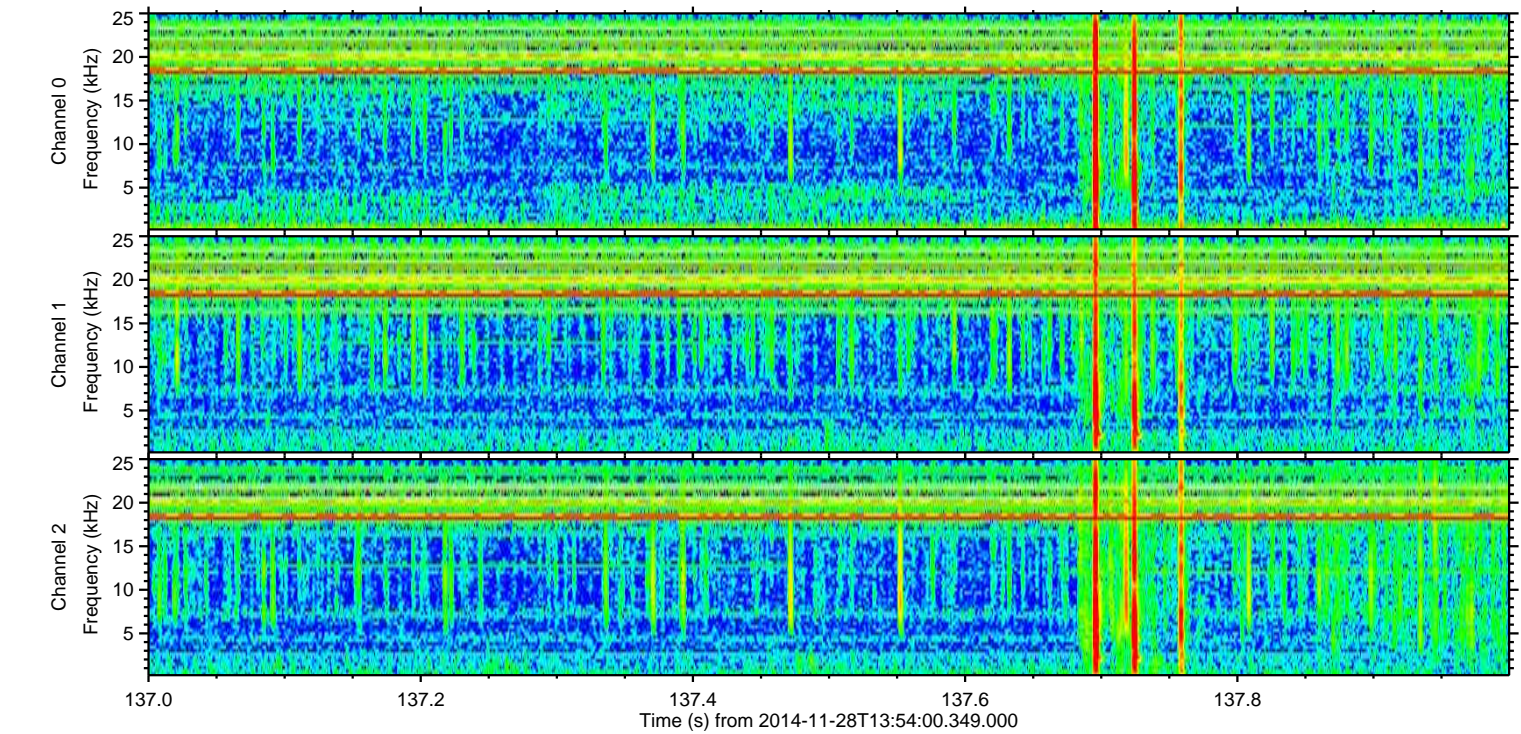
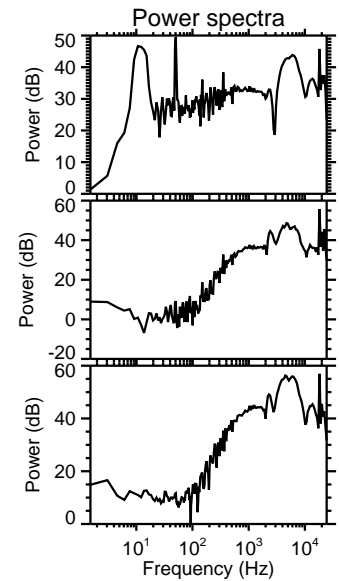
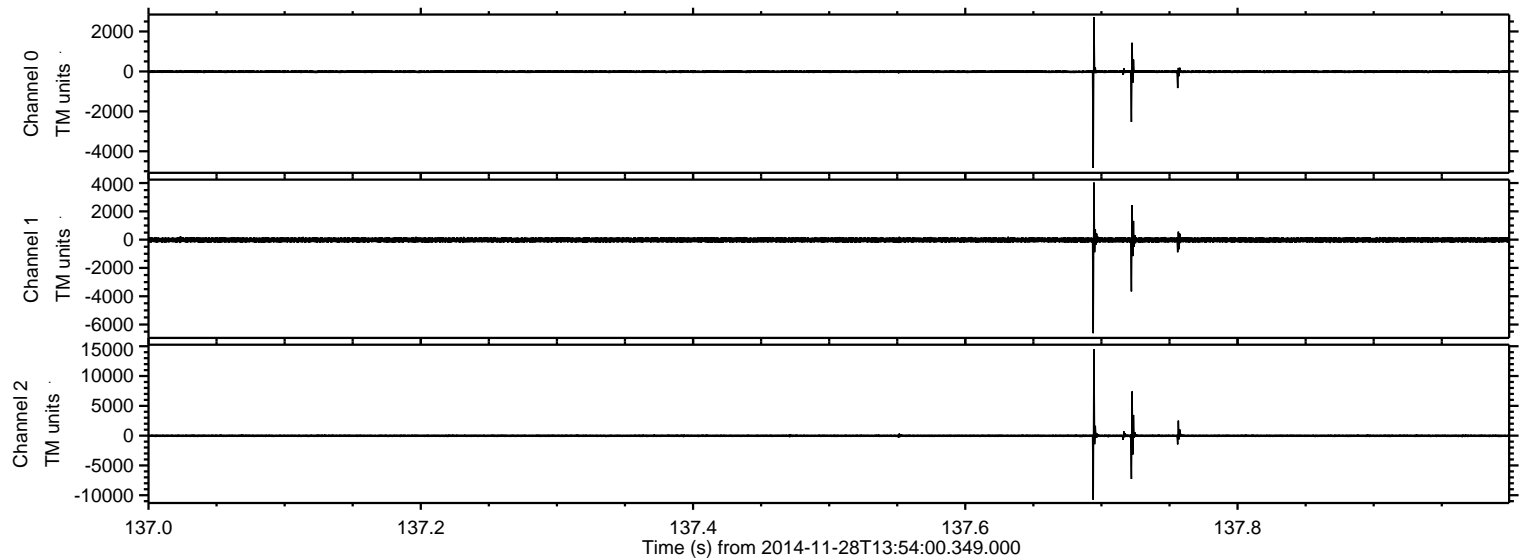
Processed Sat Nov 29 10:46:13 2014 by ELM ver.2012-10-06 from 001\_\_elm20141128\_135359\_\_dat00.bin





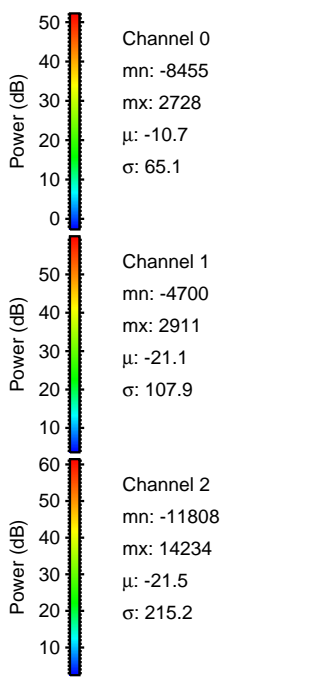
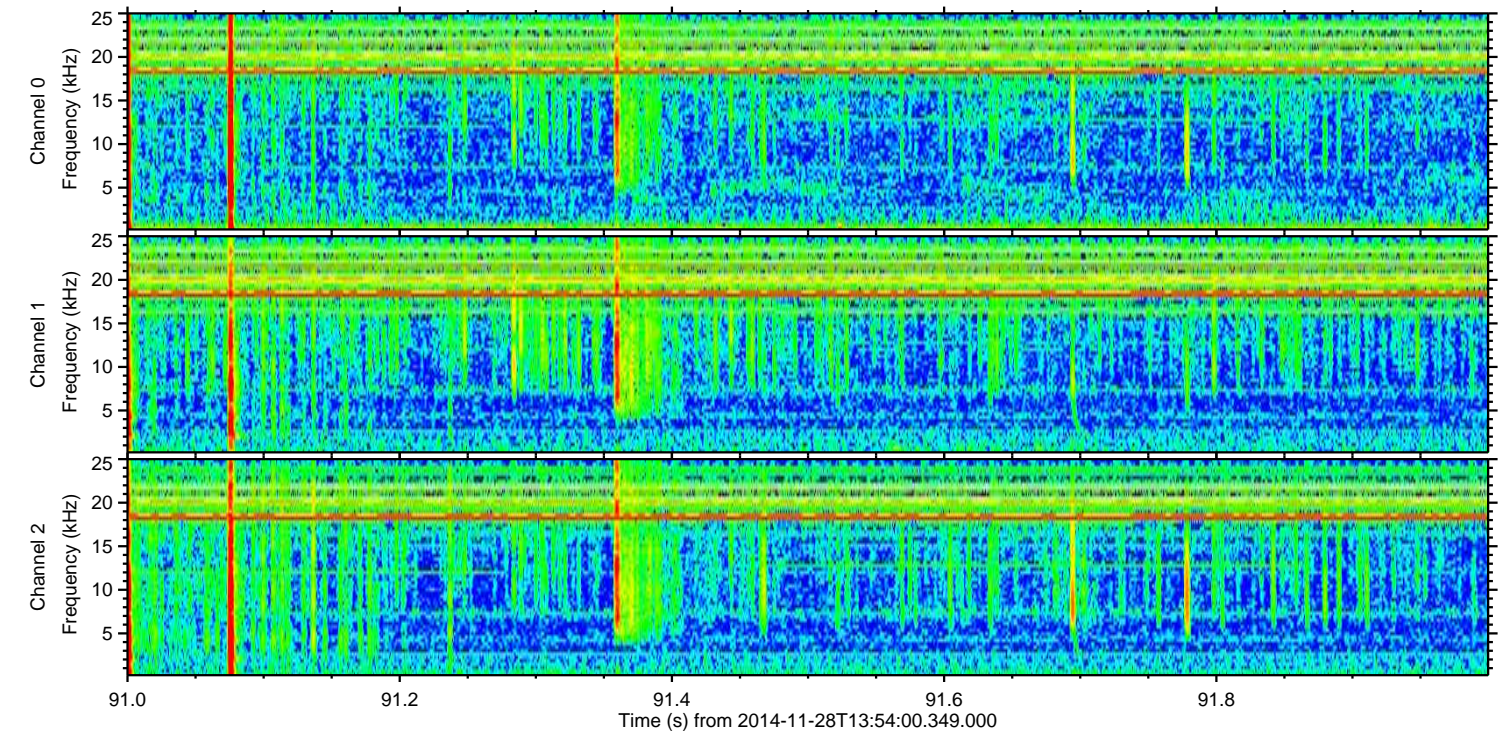
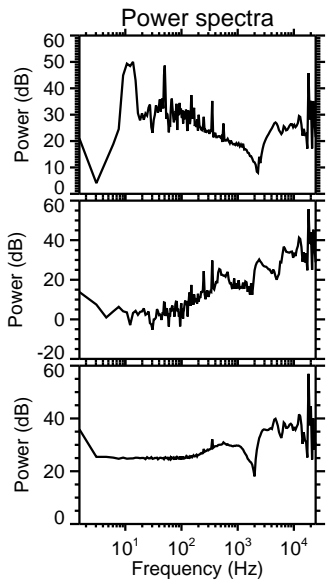
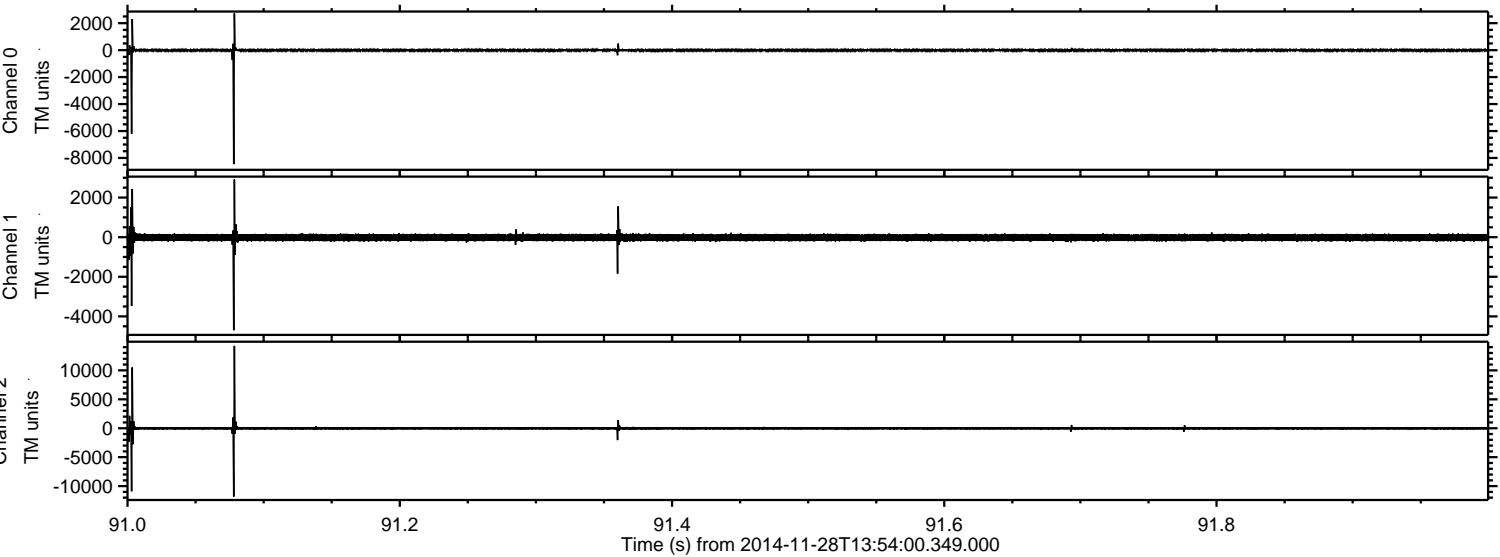
ELMAVAN 3D WAVEFORMS (Measured data sampled at 50 kHz) 49584 packets of 144 samples from 2014-11-28T13:54:00.349.000. Part 138/143

Processed Sat Nov 29 10:46:14 2014 by ELM ver.2012-10-06 from 001\_\_elm20141128\_135359\_\_dat00.bin



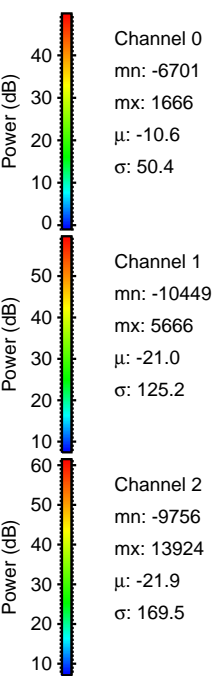
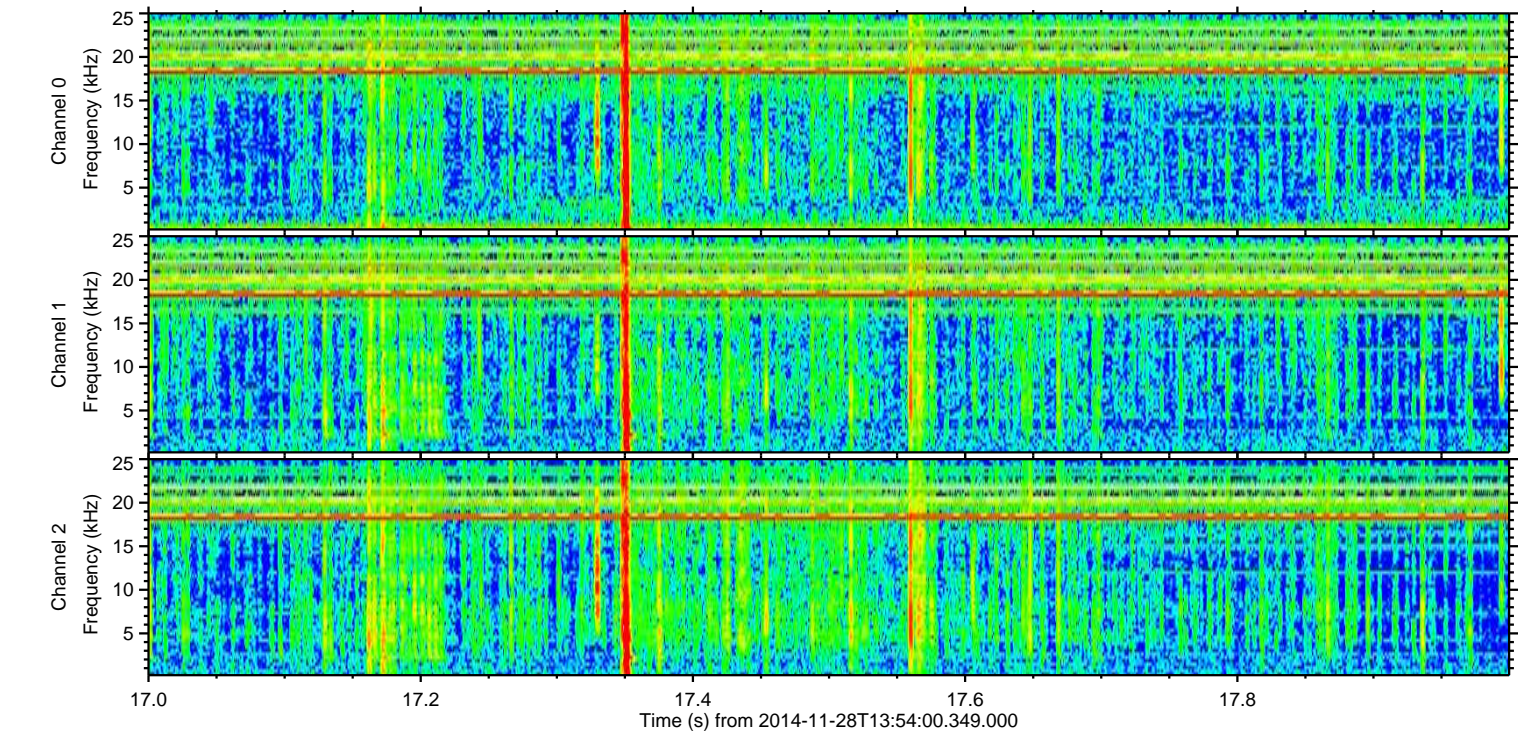
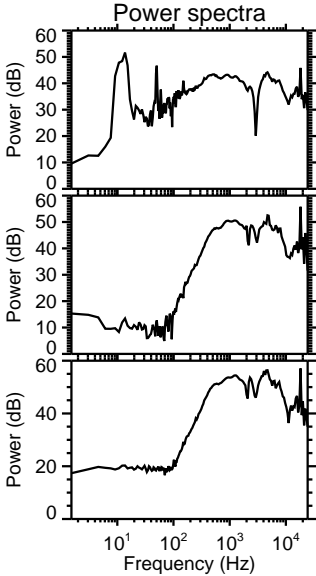
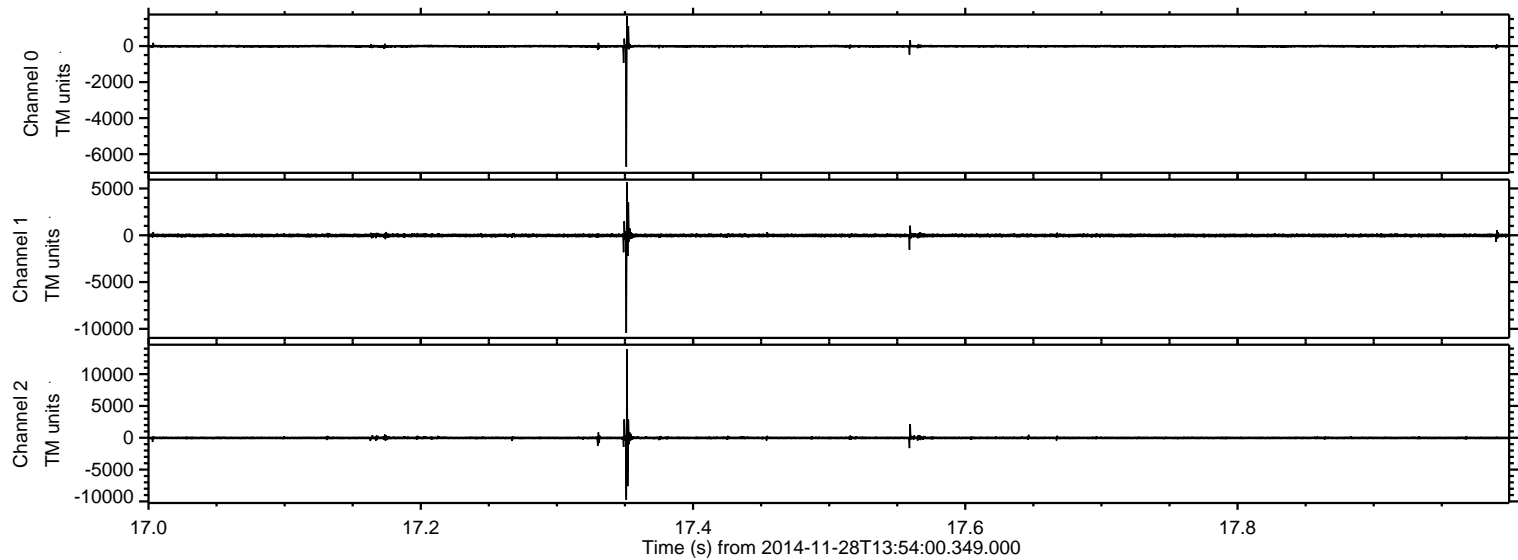


Processed Sat Nov 29 10:46:15 2014 by ELM ver.2012-10-06 from 001\_\_elm20141128\_135359\_\_dat00.bin



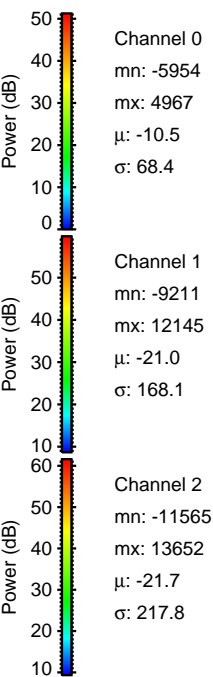
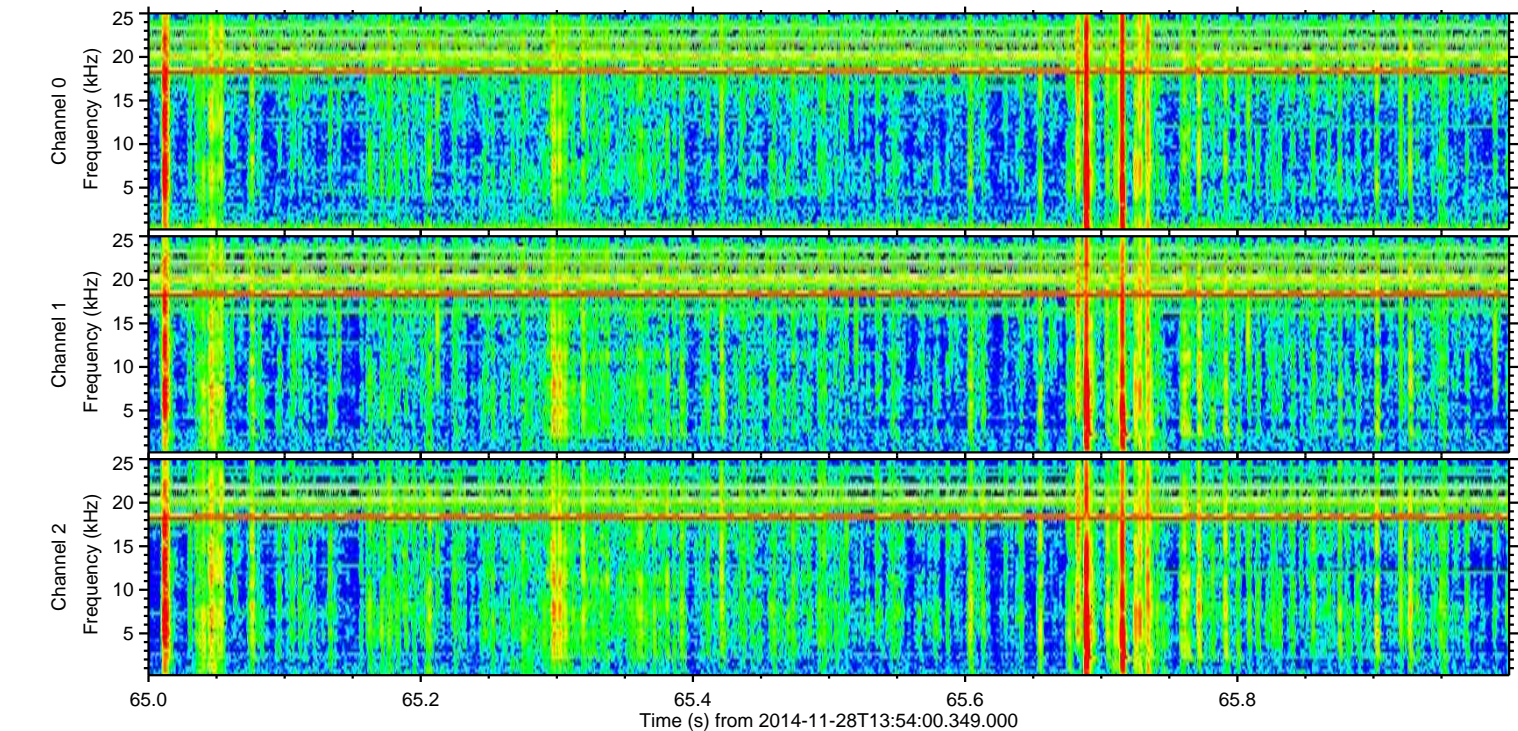
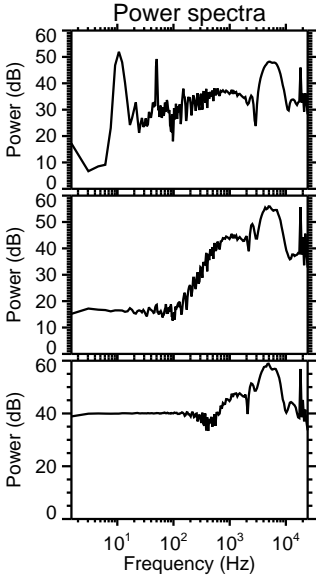
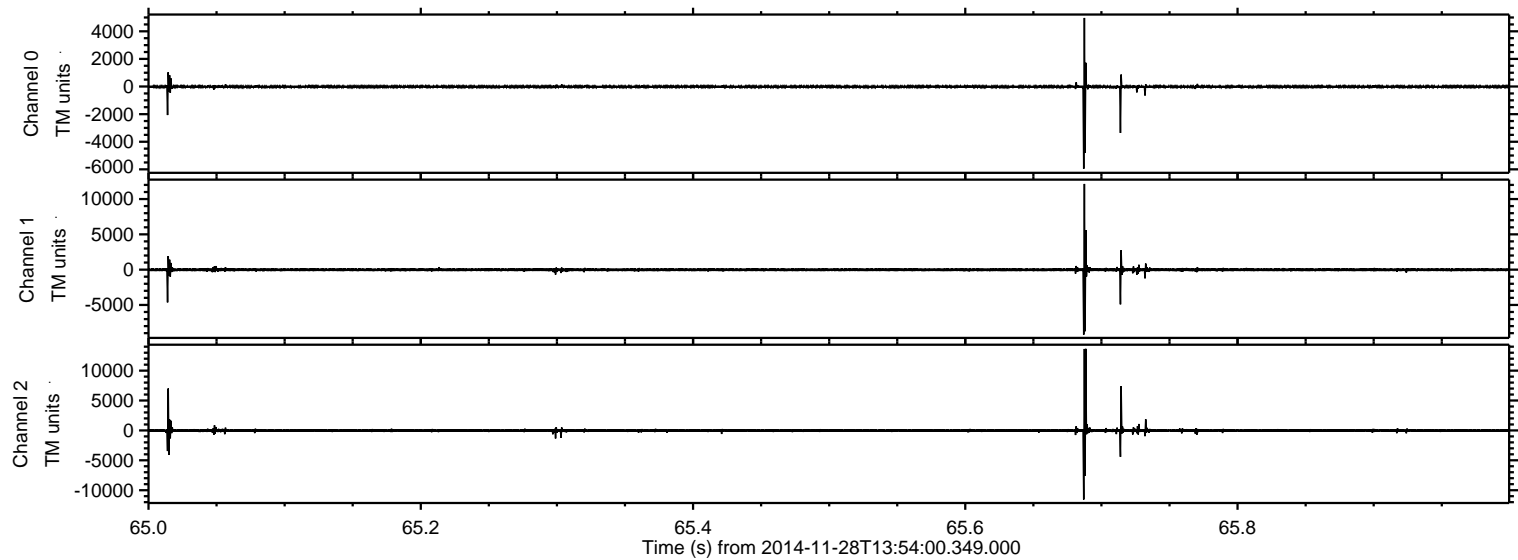


Processed Sat Nov 29 10:46:16 2014 by ELM ver.2012-10-06 from 001\_\_elm20141128\_135359\_\_dat00.bin



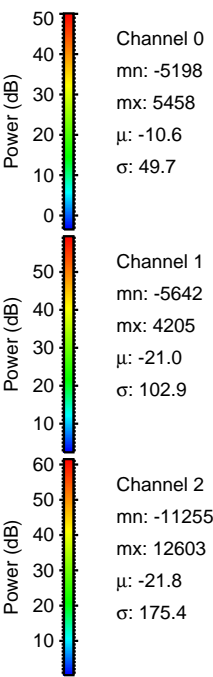
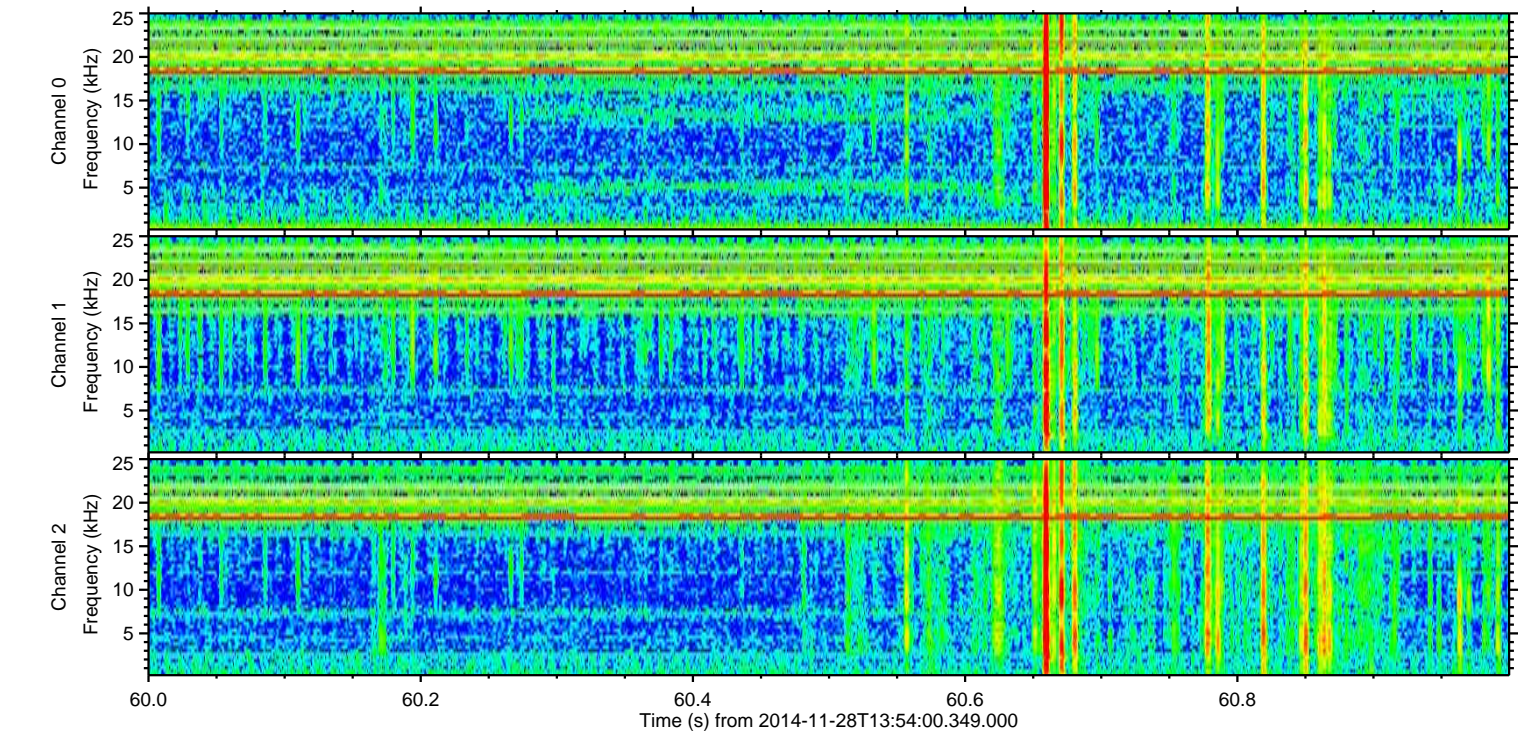
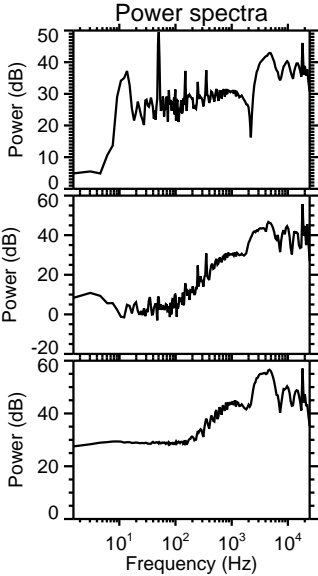
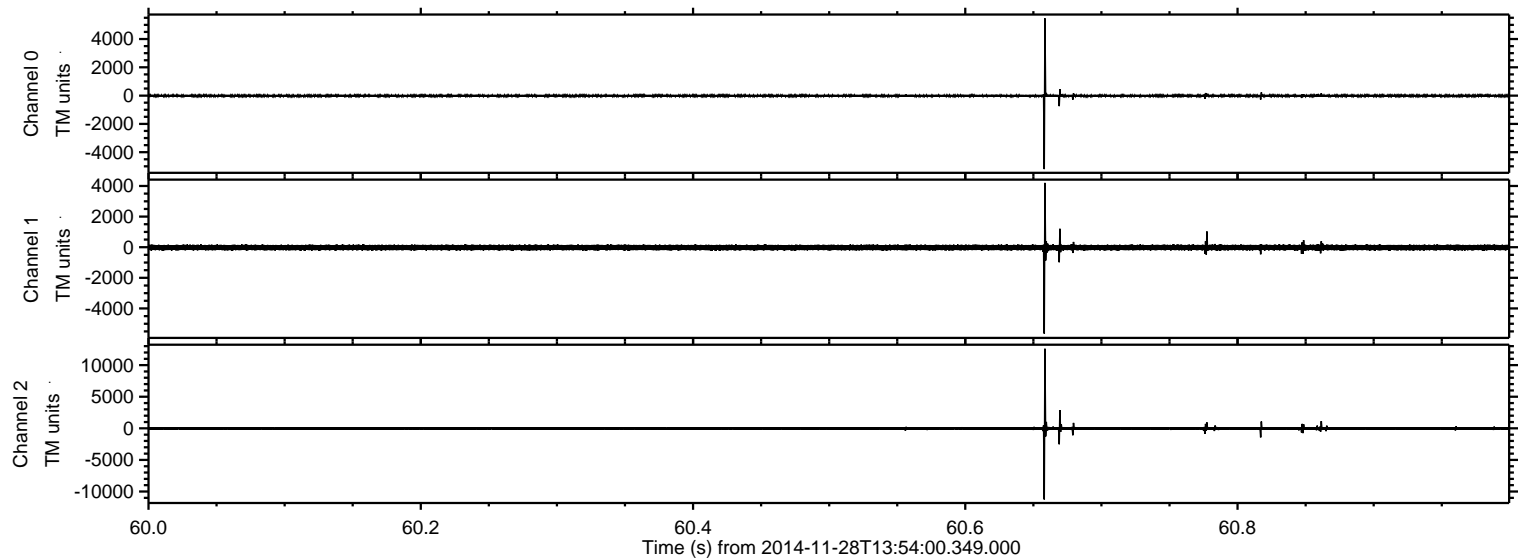


Processed Sat Nov 29 10:46:17 2014 by ELM ver.2012-10-06 from 001\_\_elm20141128\_135359\_\_dat00.bin





Processed Sat Nov 29 10:46:18 2014 by ELM ver.2012-10-06 from 001\_\_elm20141128\_135359\_\_dat00.bin



Channel 0  
mn: -5198  
mx: 5458  
 $\mu$ : -10.6  
 $\sigma$ : 49.7

Channel 1  
mn: -5642  
mx: 4205  
 $\mu$ : -21.0  
 $\sigma$ : 102.9

Channel 2  
mn: -11255  
mx: 12603  
 $\mu$ : -21.8  
 $\sigma$ : 175.4



Processed Sat Nov 29 10:46:19 2014 by ELM ver.2012-10-06 from 001\_\_elm20141128\_135359\_\_dat00.bin

