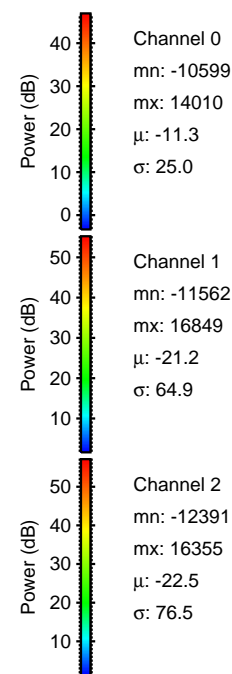
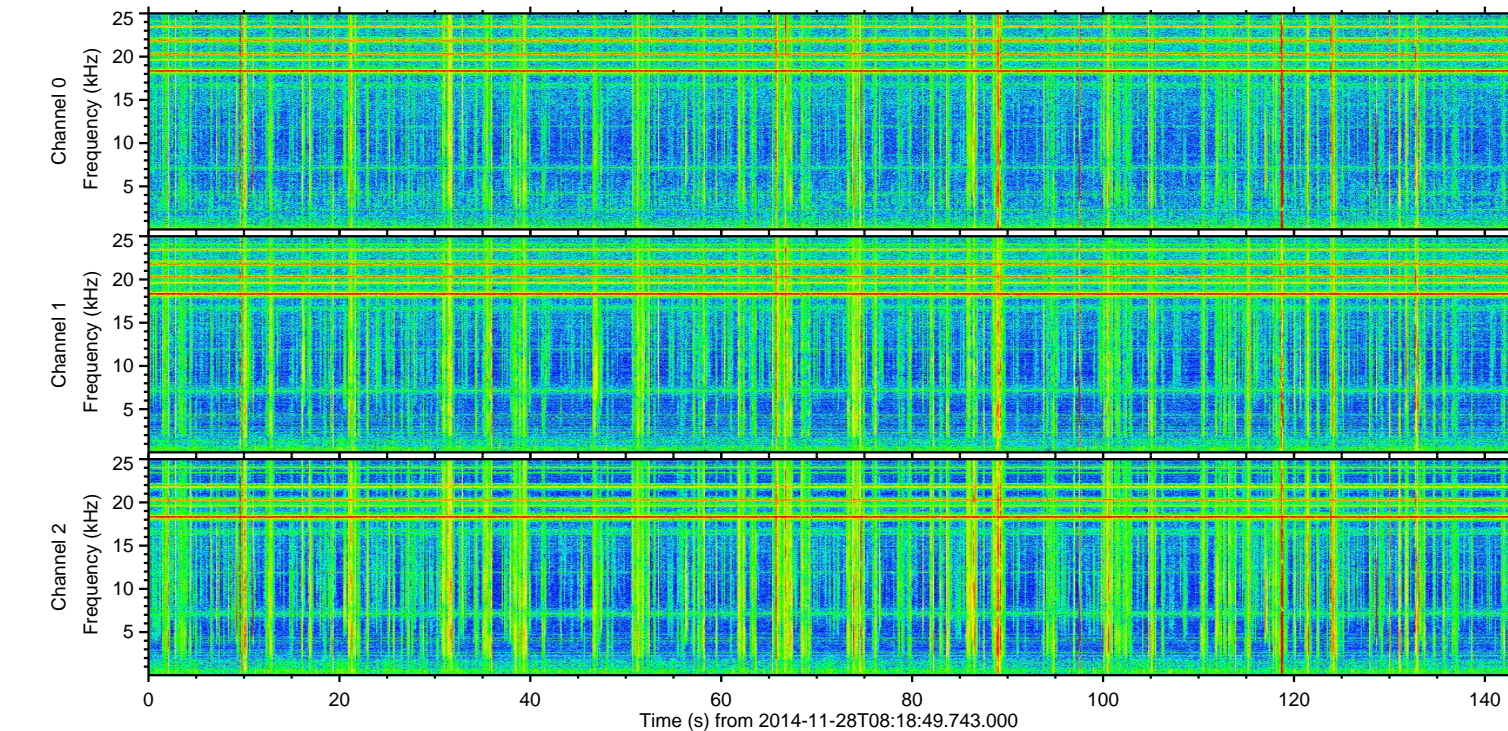
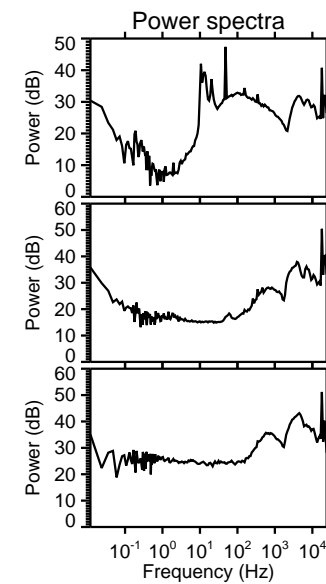
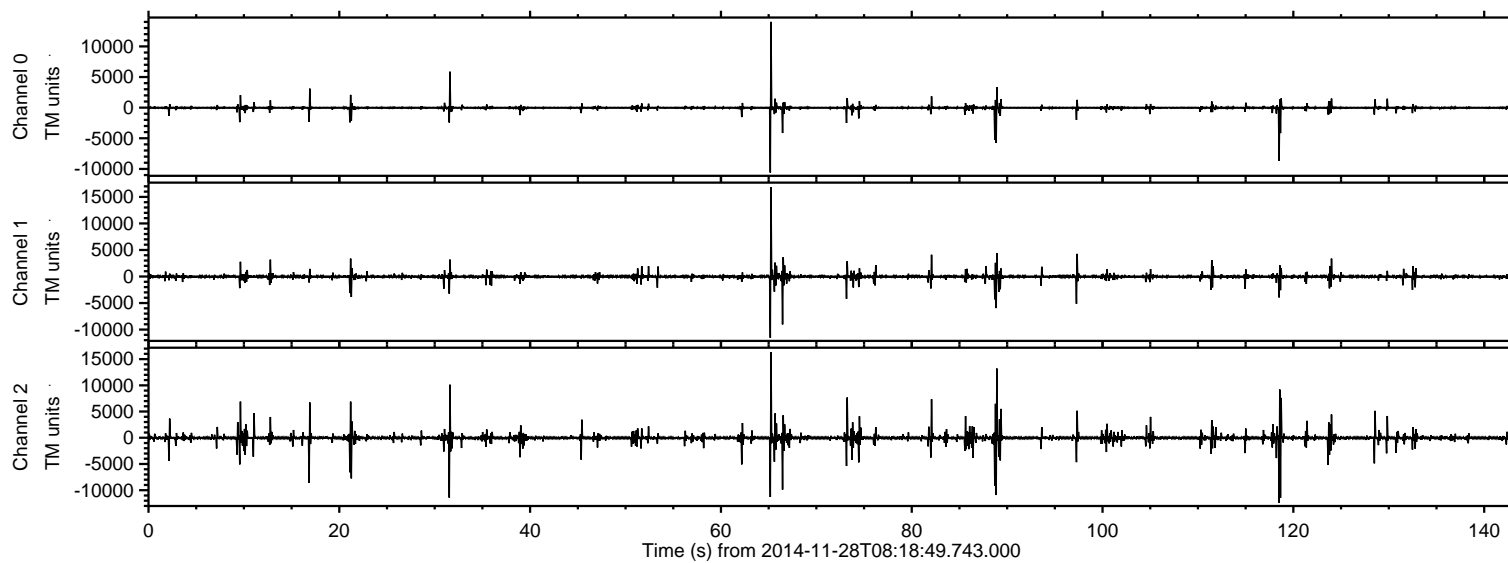


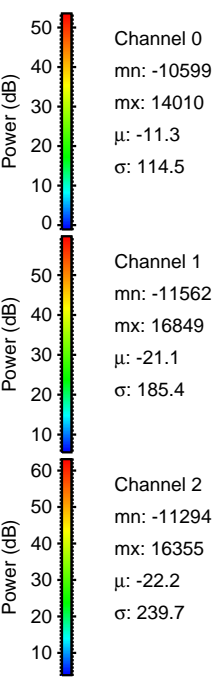
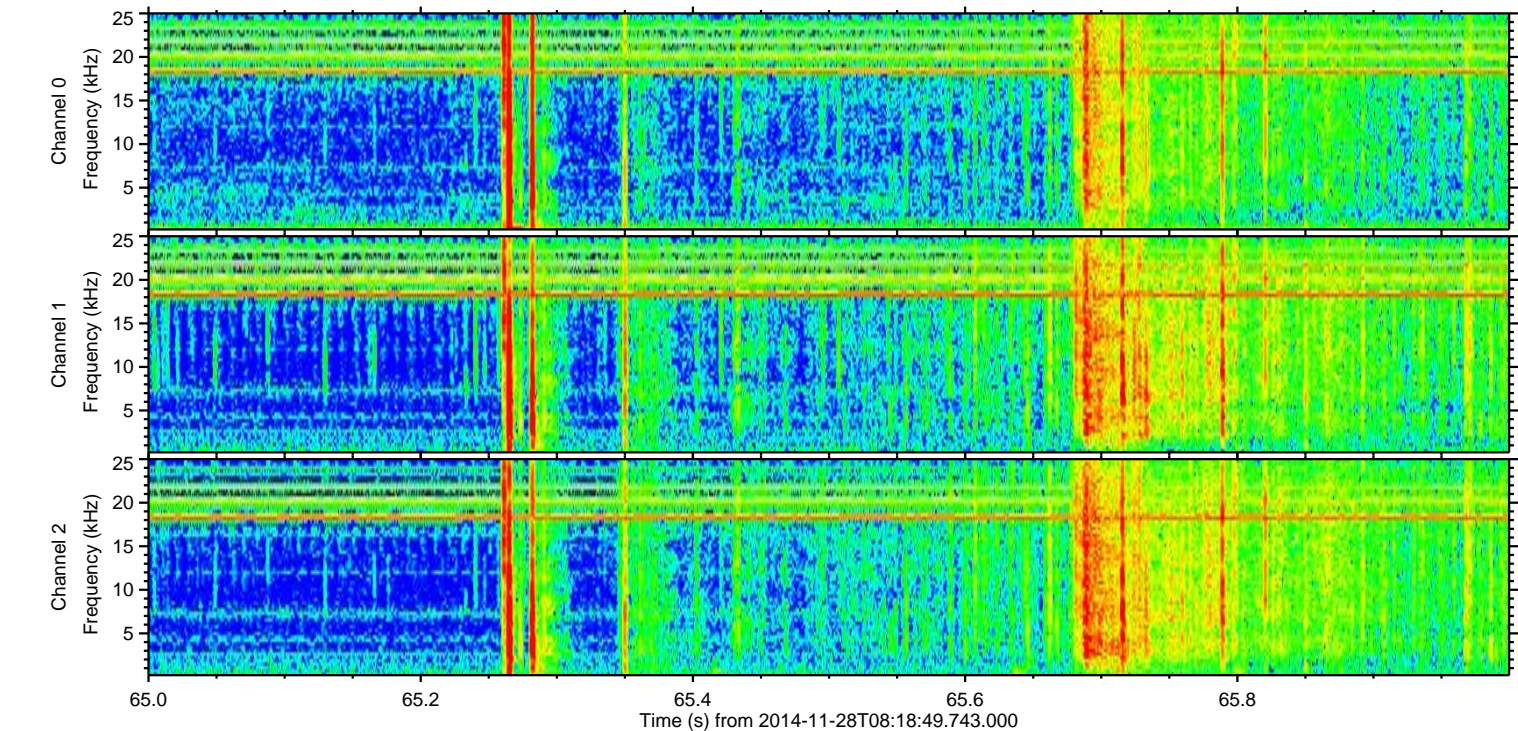
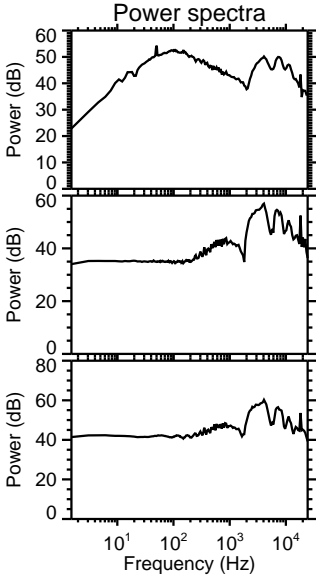
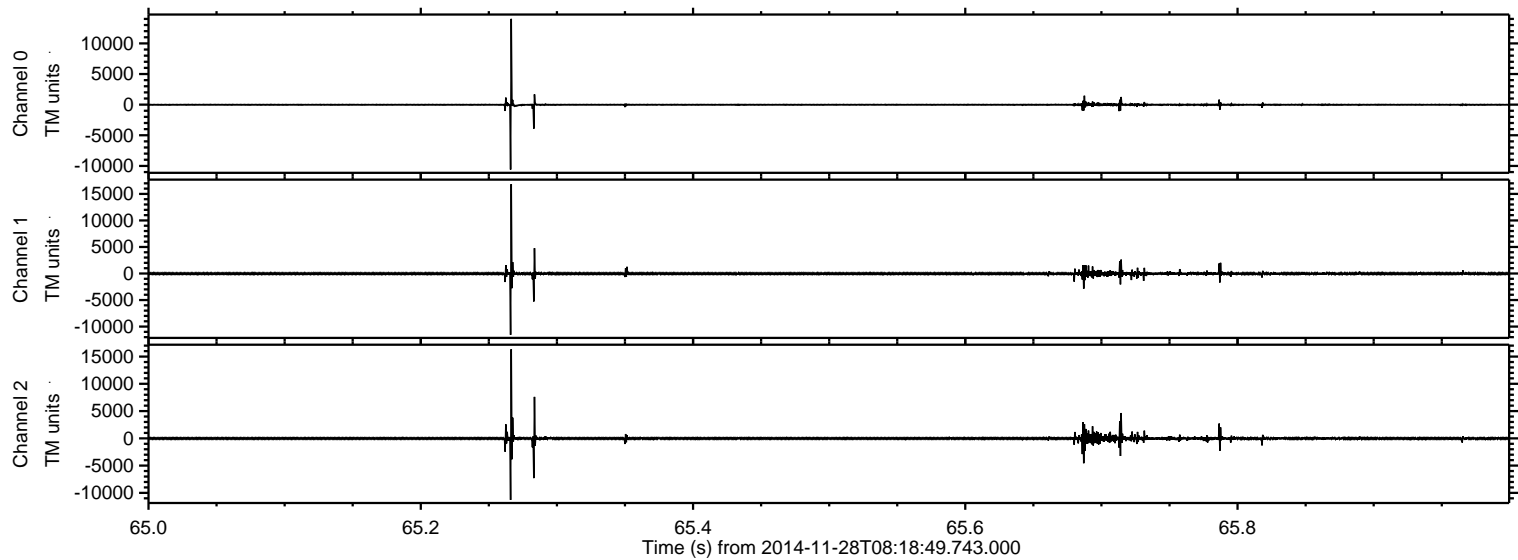
ELMAVAN 3D WAVEFORMS (Measured data sampled at 50 kHz) 49520 packets of 144 samples from 2014-11-28T08:18:49.743.000.

Processed Sat Nov 29 01:07:19 2014 by ELM ver.2012-10-06 from 001__elm20141128_081848__dat00.bin



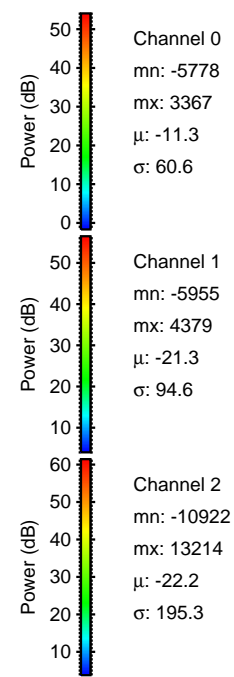
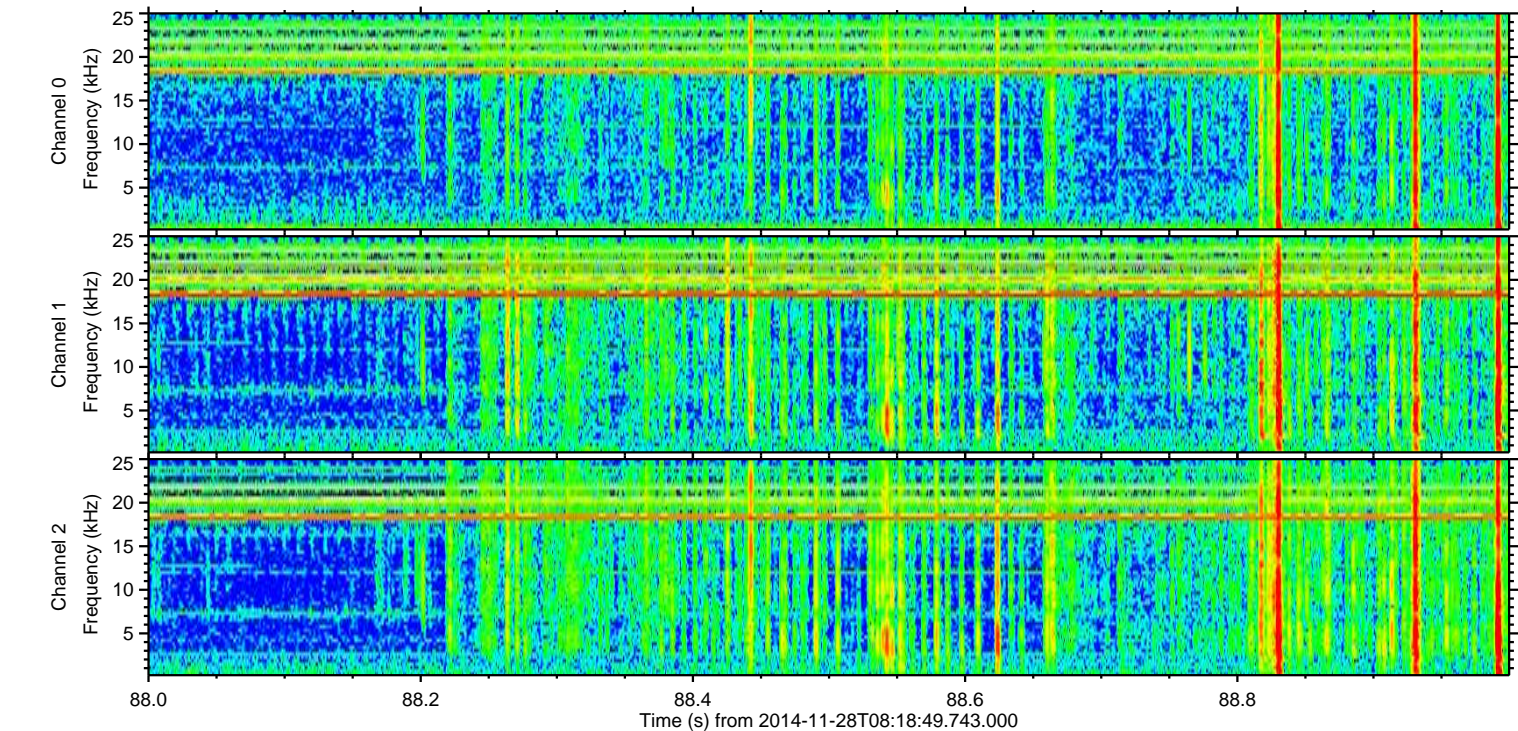
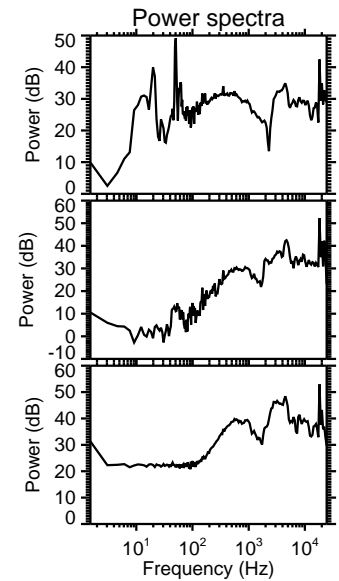
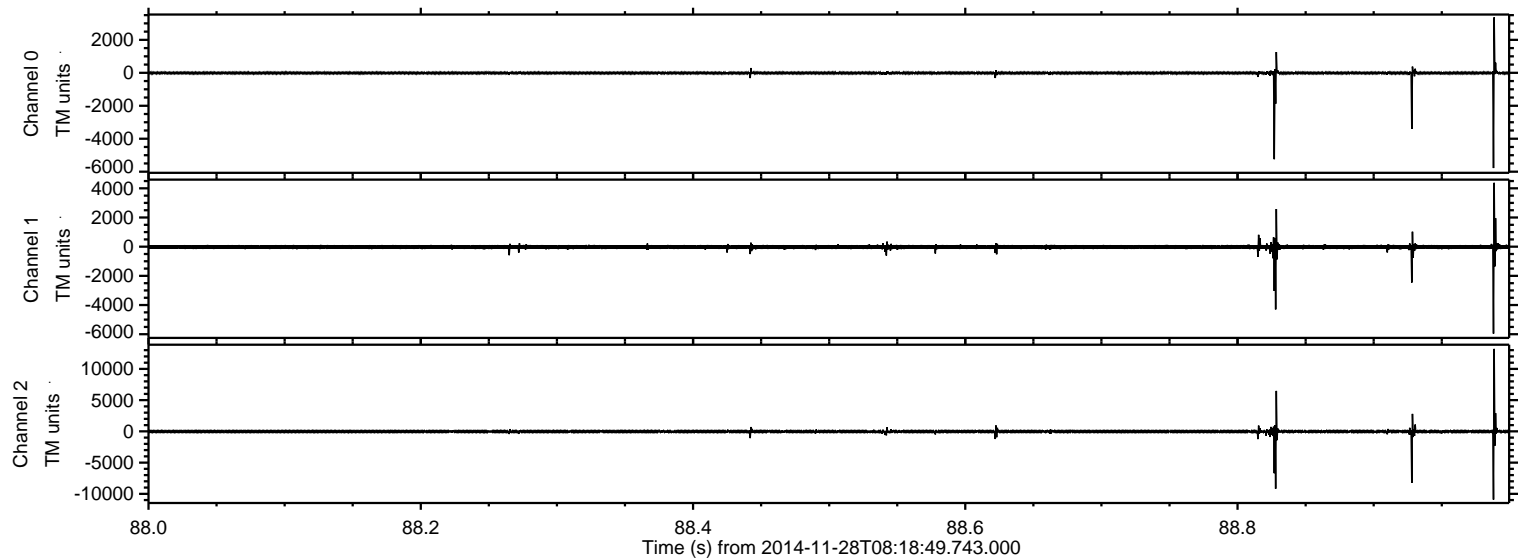
ELMAVAN 3D WAVEFORMS (Measured data sampled at 50 kHz) 49520 packets of 144 samples from 2014-11-28T08:18:49.743.000. Part 66/143

Processed Sat Nov 29 01:07:35 2014 by ELM ver.2012-10-06 from 001__elm20141128_081848__dat00.bin



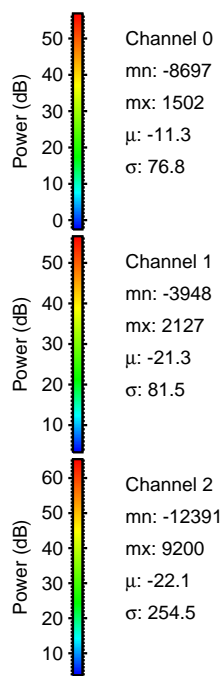
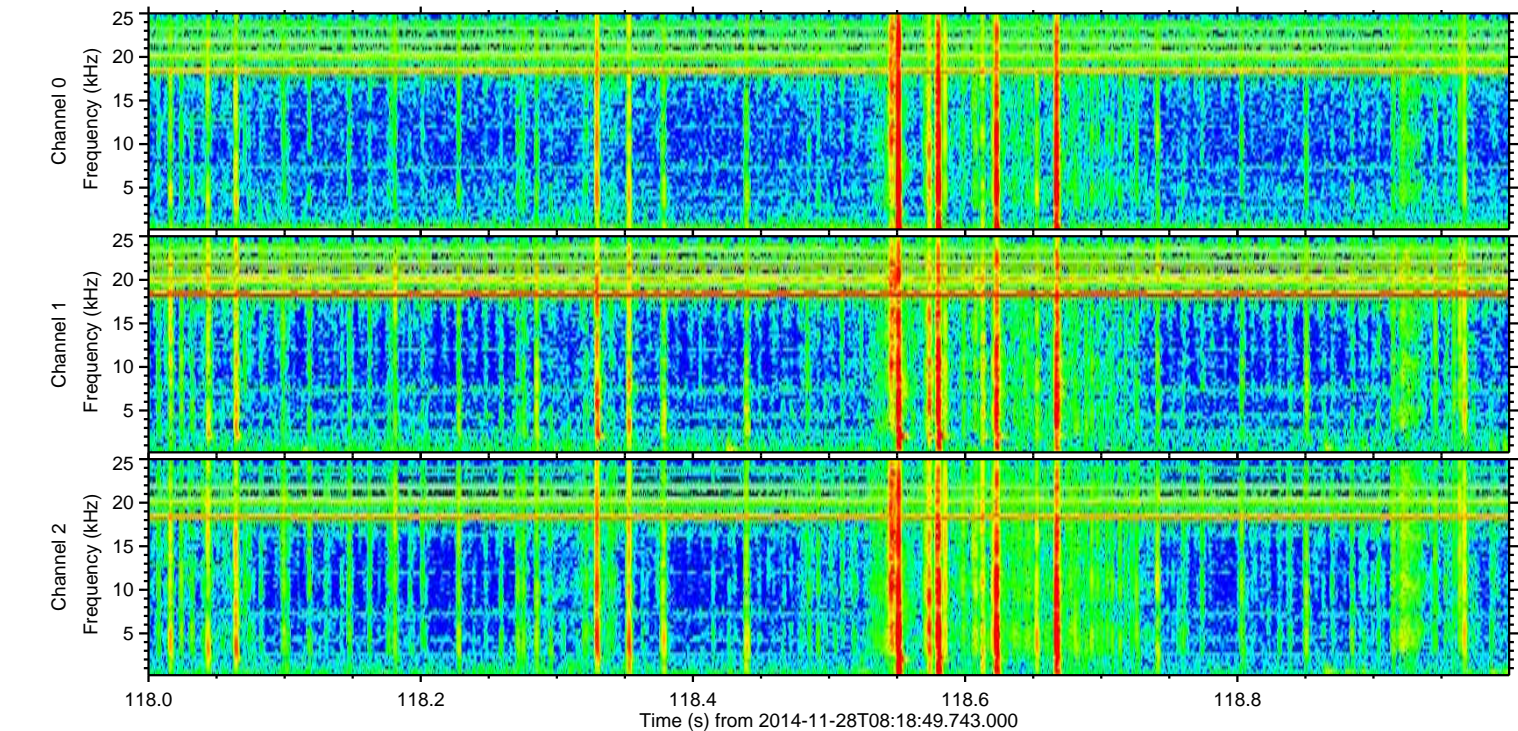
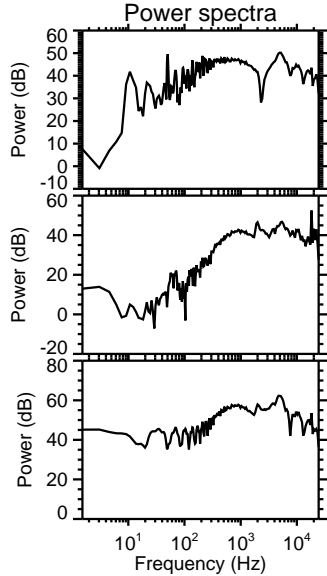
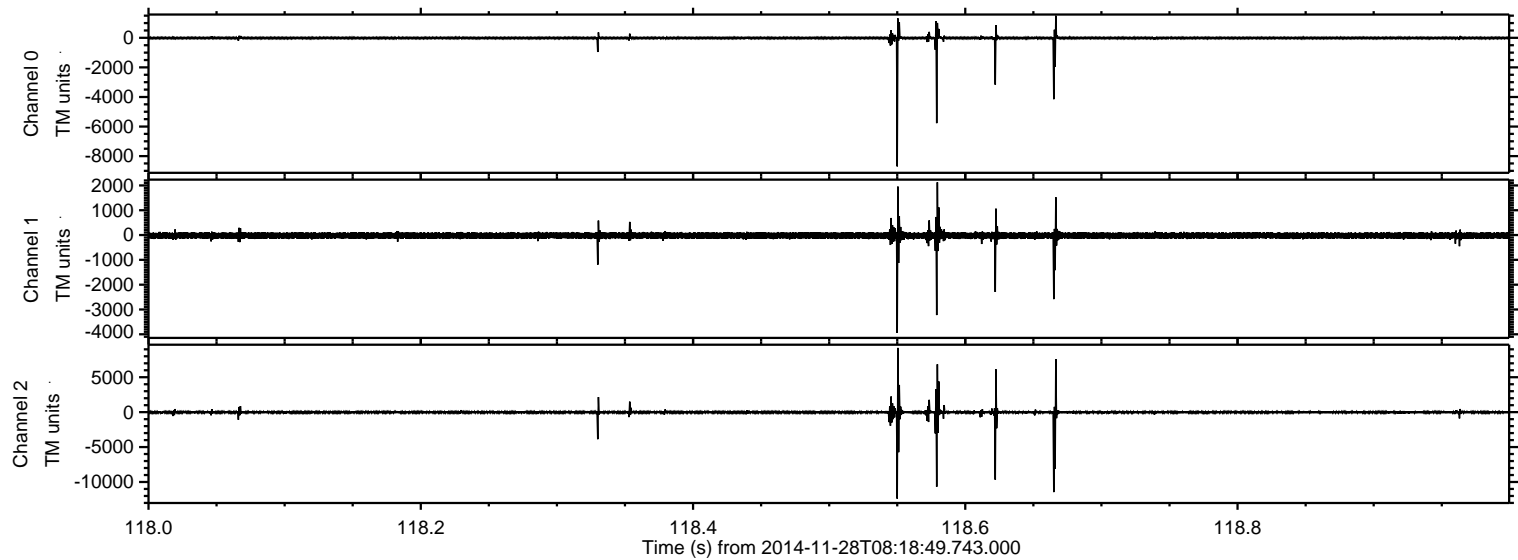
ELMAVAN 3D WAVEFORMS (Measured data sampled at 50 kHz) 49520 packets of 144 samples from 2014-11-28T08:18:49.743.000. Part 89/143

Processed Sat Nov 29 01:07:36 2014 by ELM ver.2012-10-06 from 001__elm20141128_081848__dat00.bin

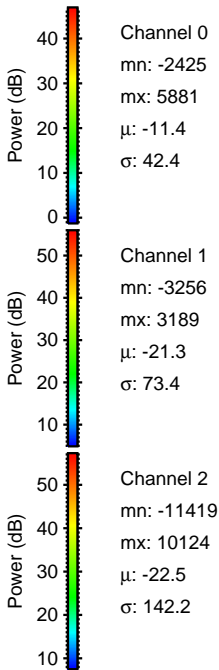
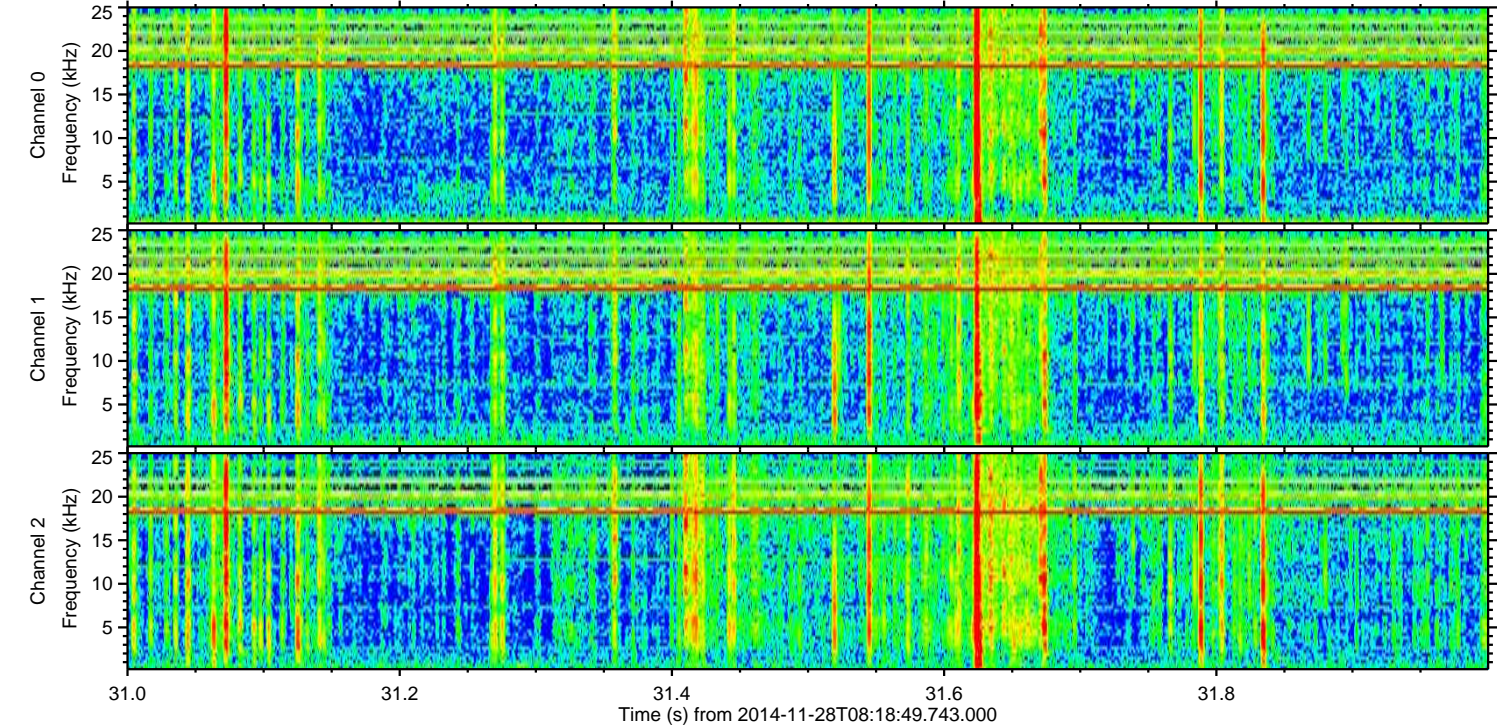
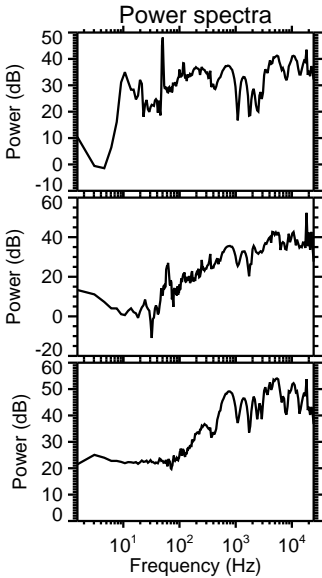
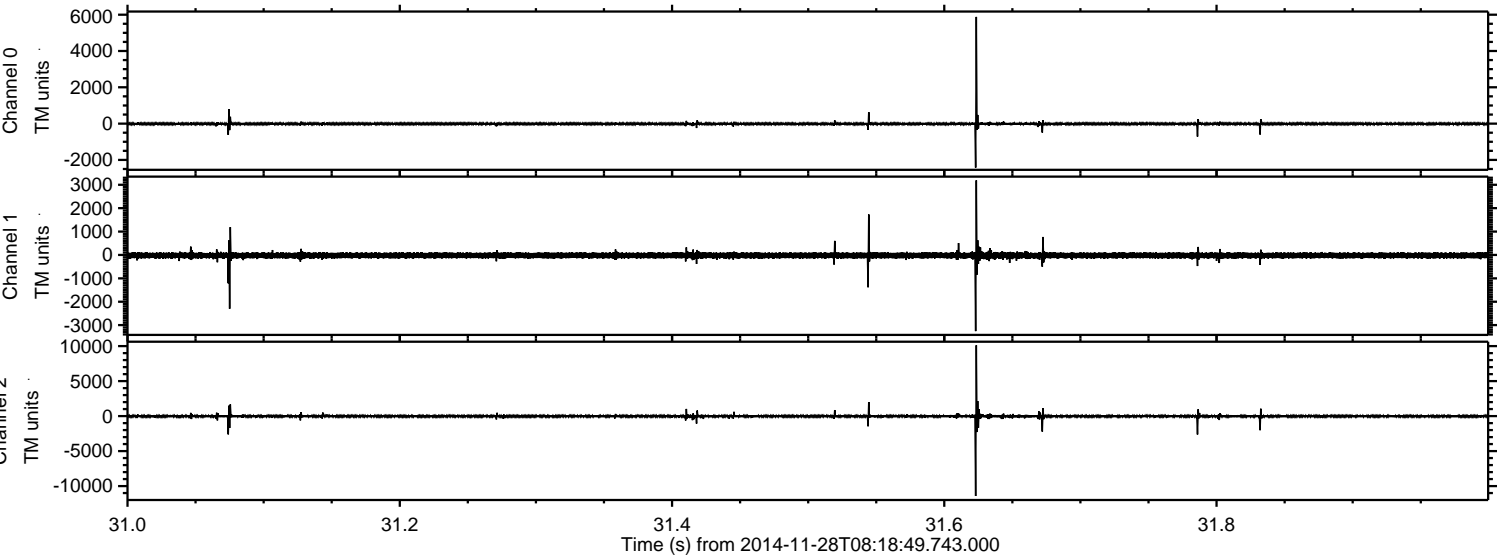


ELMAVAN 3D WAVEFORMS (Measured data sampled at 50 kHz) 49520 packets of 144 samples from 2014-11-28T08:18:49.743.000. Part 119/143

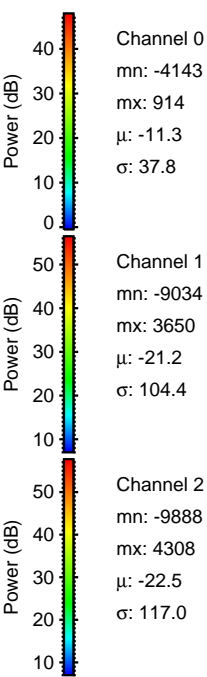
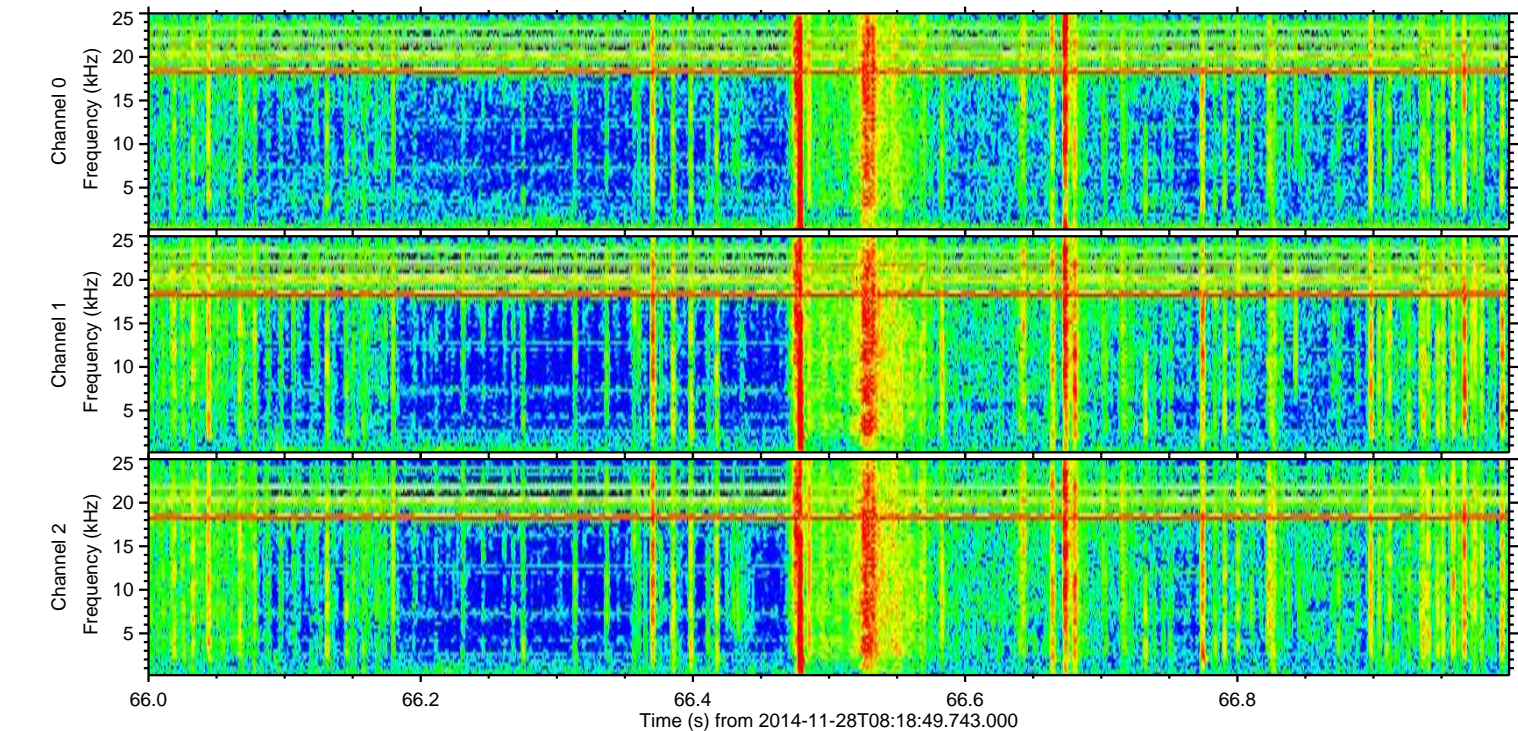
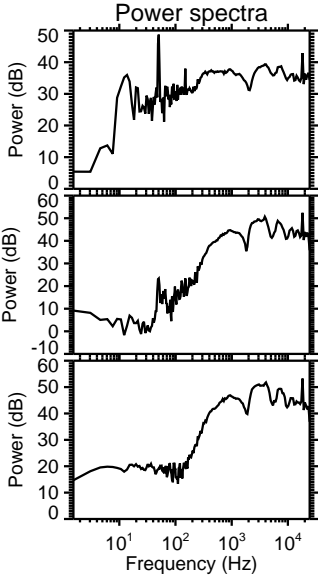
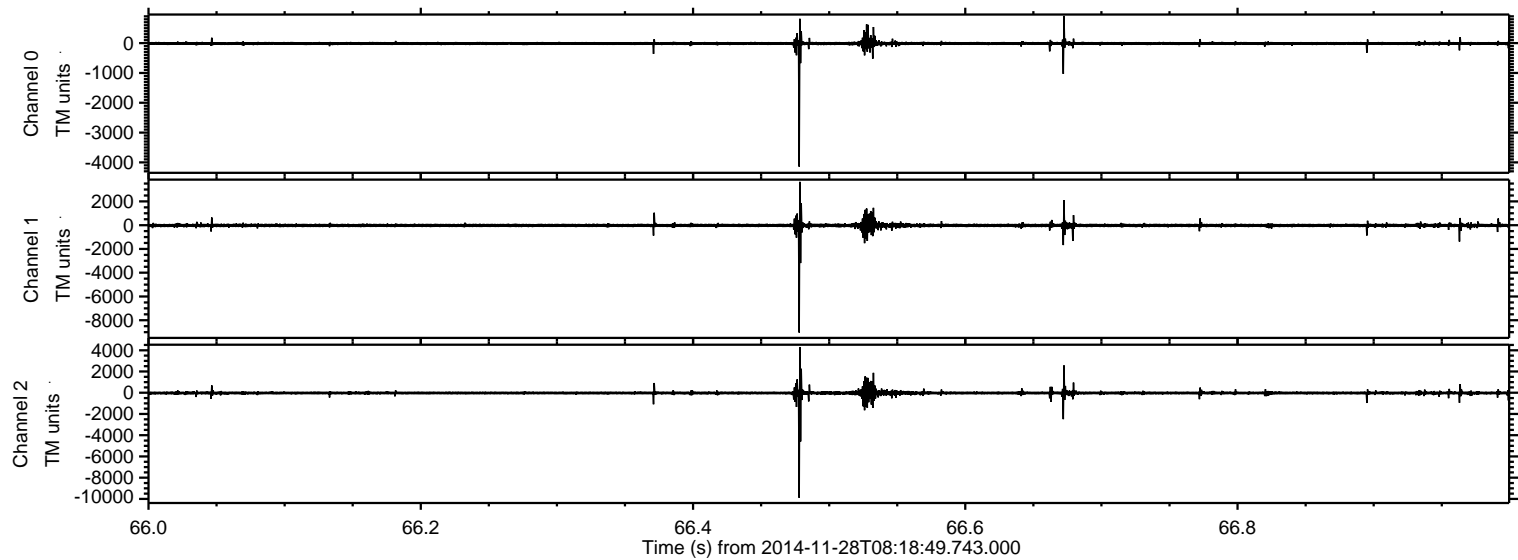
Processed Sat Nov 29 01:07:37 2014 by ELM ver.2012-10-06 from 001__elm20141128_081848__dat00.bin



Processed Sat Nov 29 01:07:39 2014 by ELM ver.2012-10-06 from 001__elm20141128_081848__dat00.bin

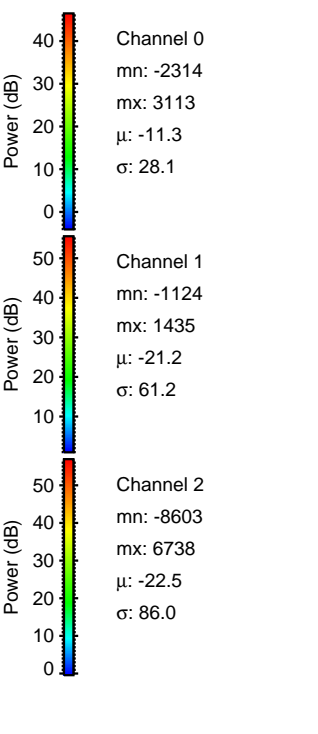
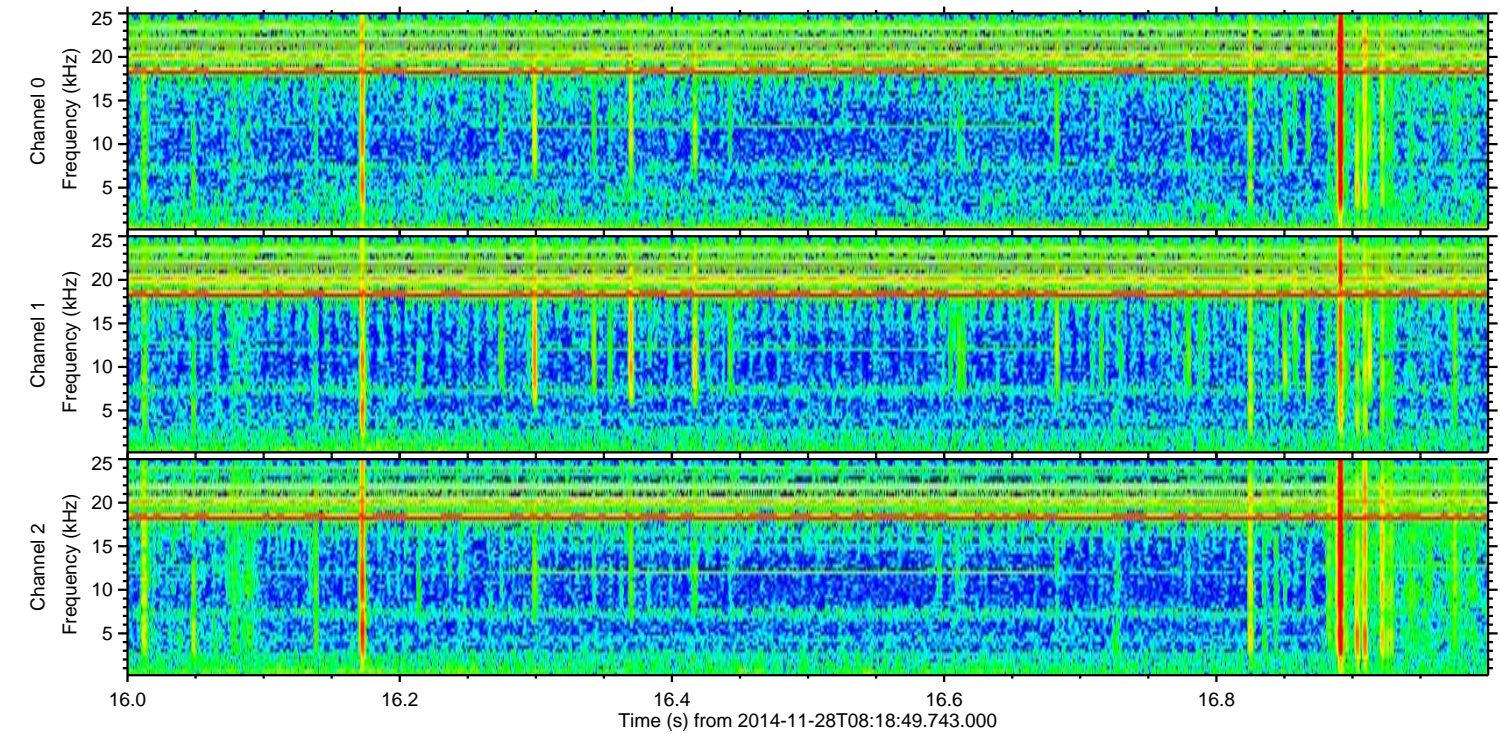
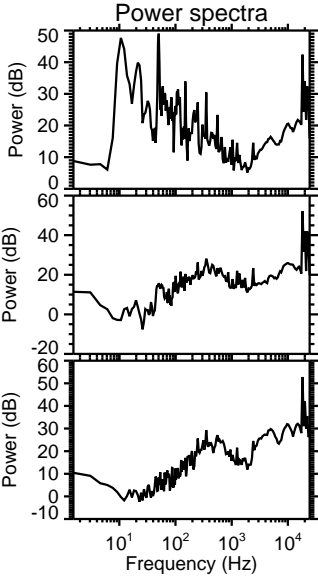
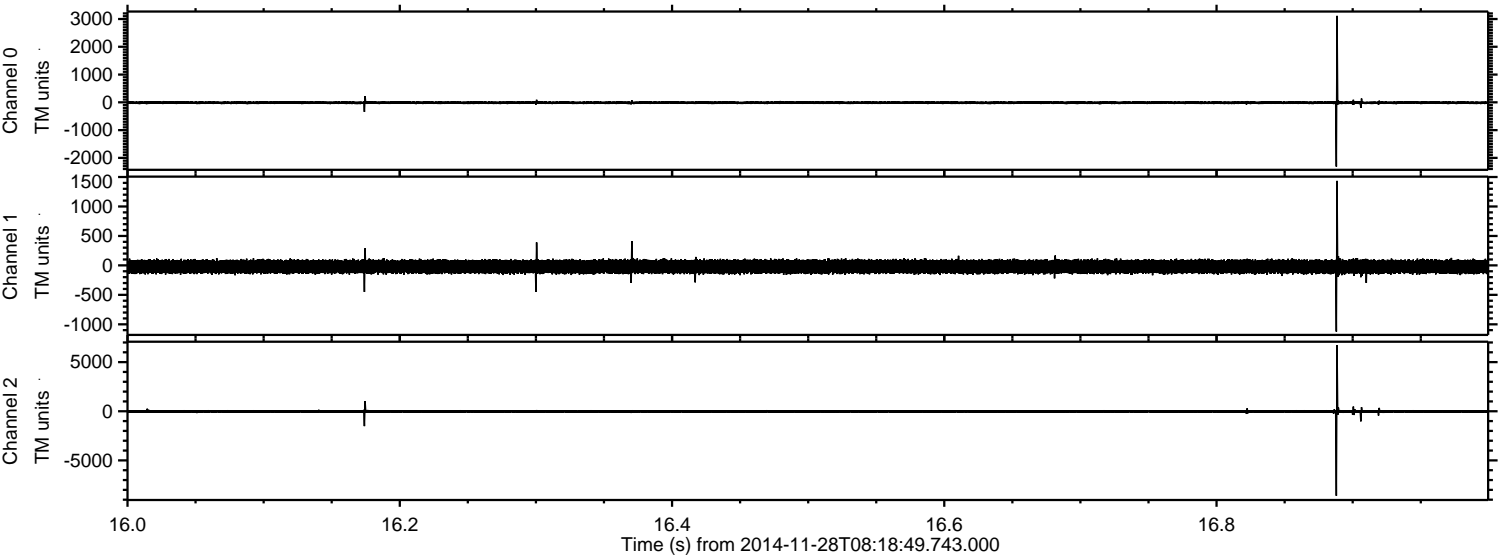


Processed Sat Nov 29 01:07:40 2014 by ELM ver.2012-10-06 from 001__elm20141128_081848__dat00.bin

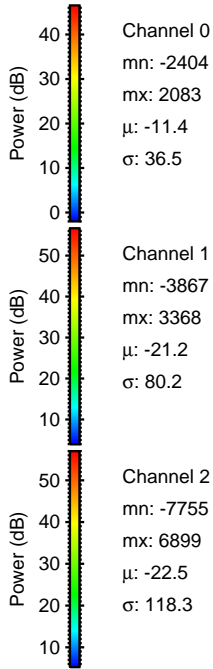
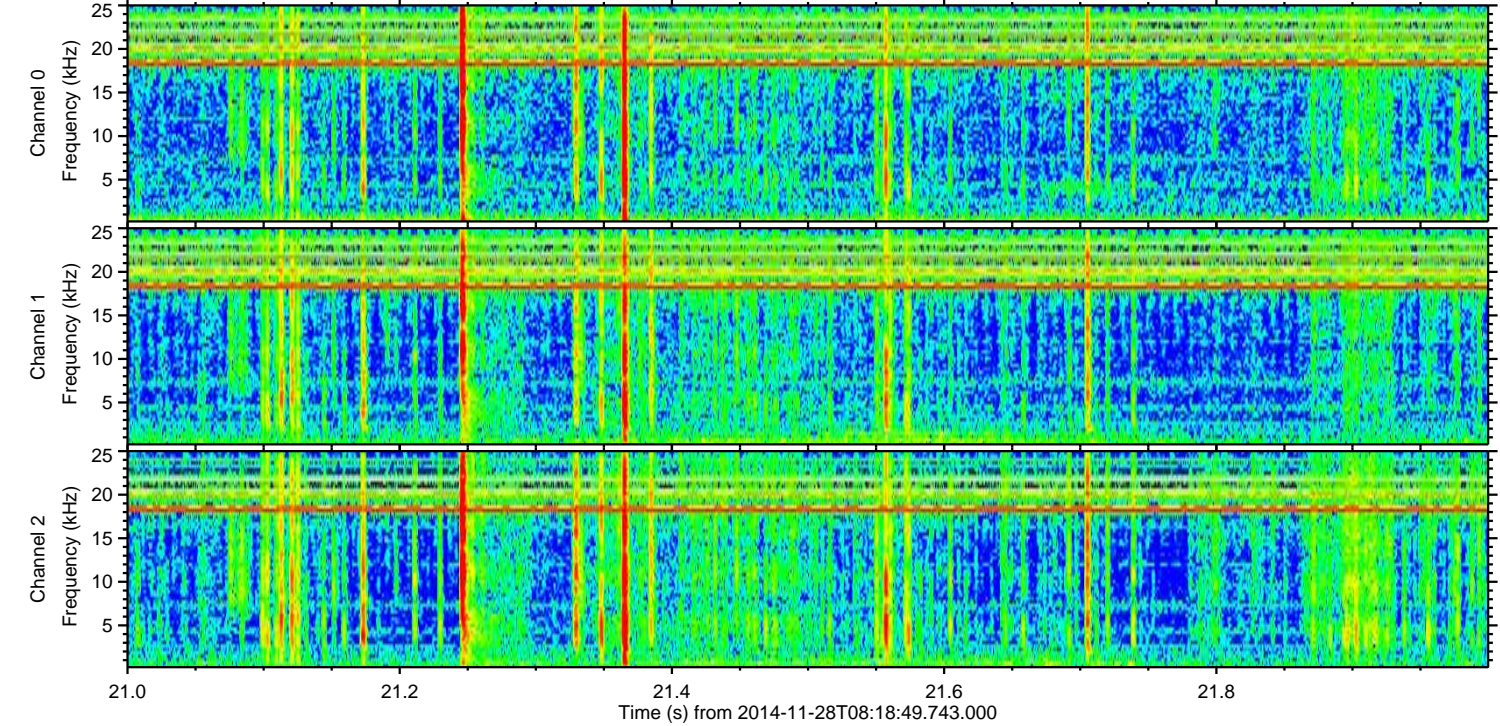
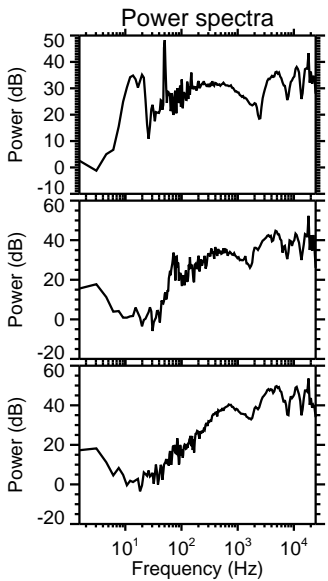
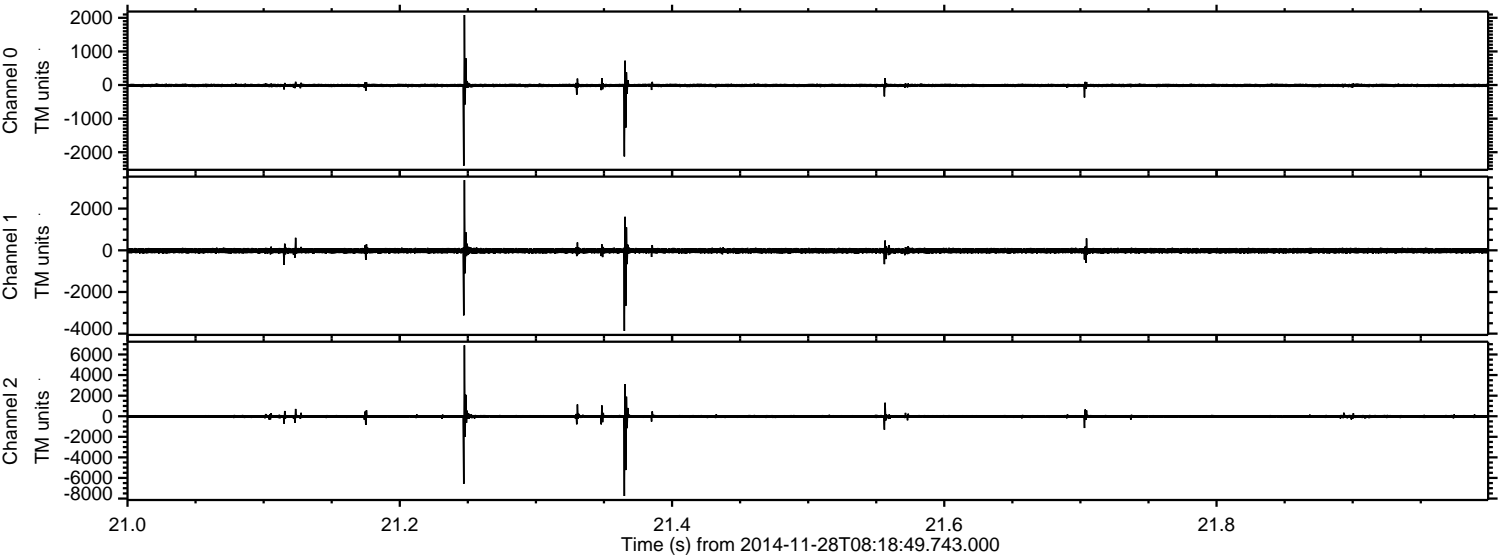


ELMAVAN 3D WAVEFORMS (Measured data sampled at 50 kHz) 49520 packets of 144 samples from 2014-11-28T08:18:49.743.000. Part 17/143

Processed Sat Nov 29 01:07:41 2014 by ELM ver.2012-10-06 from 001__elm20141128_081848__dat00.bin



Processed Sat Nov 29 01:07:42 2014 by ELM ver.2012-10-06 from 001__elm20141128_081848__dat00.bin

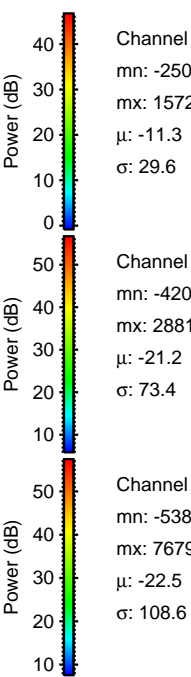
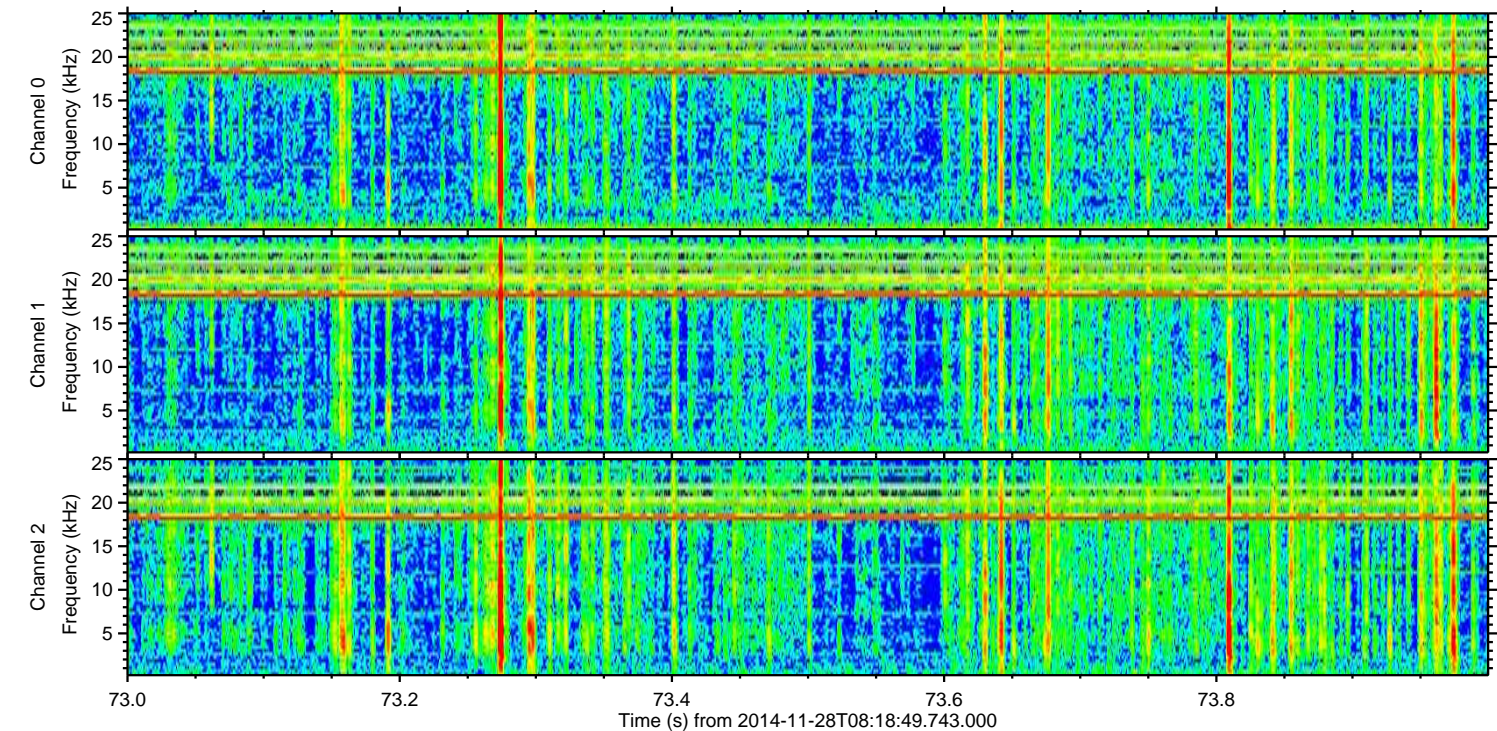
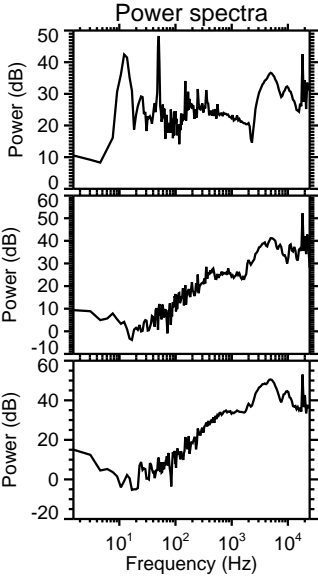
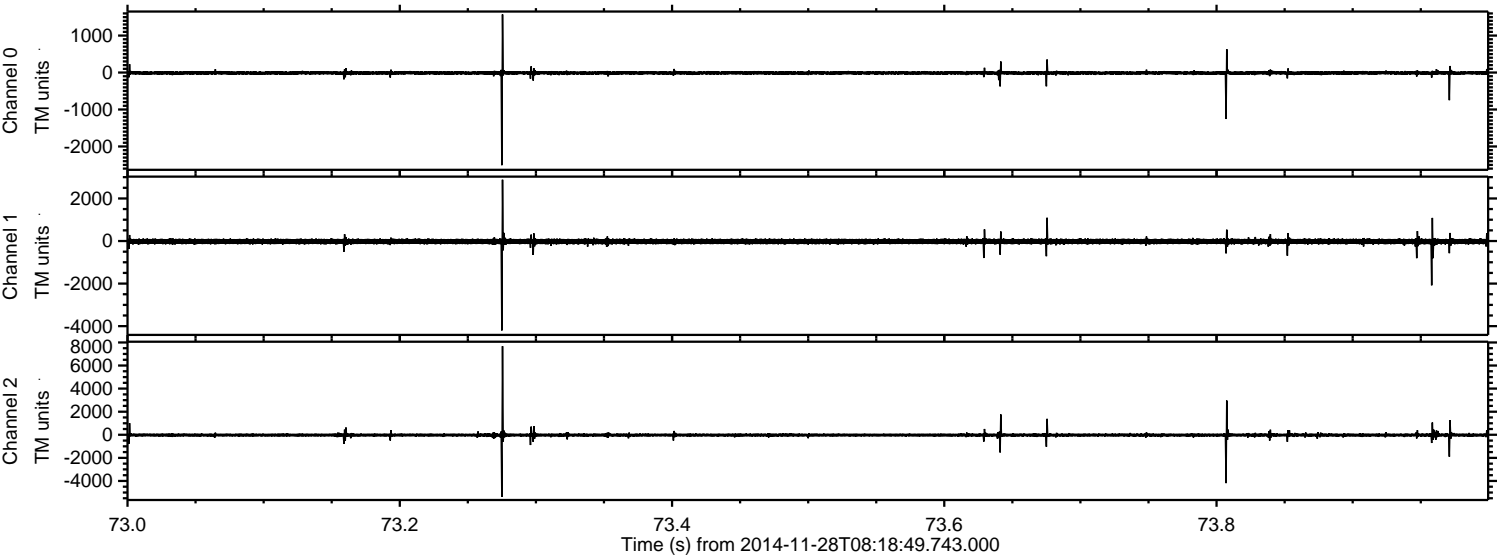


Channel 0
mn: -2404
mx: 2083
 μ : -11.4
 σ : 36.5

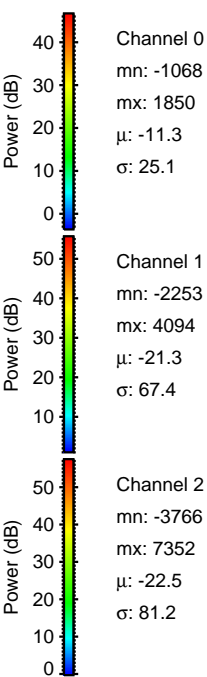
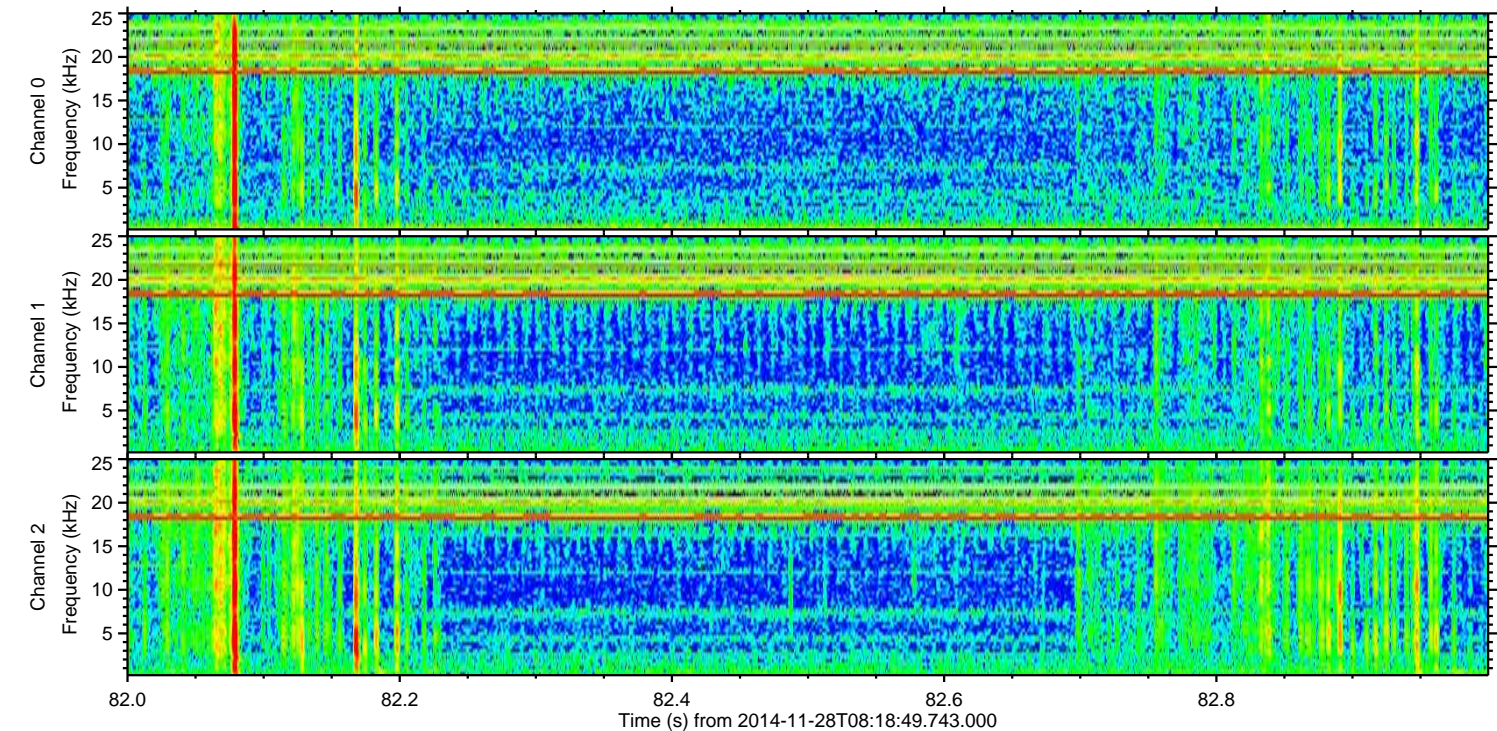
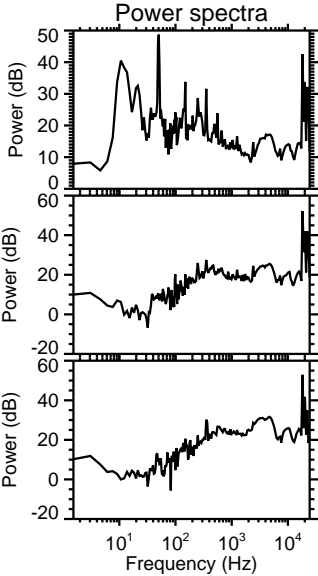
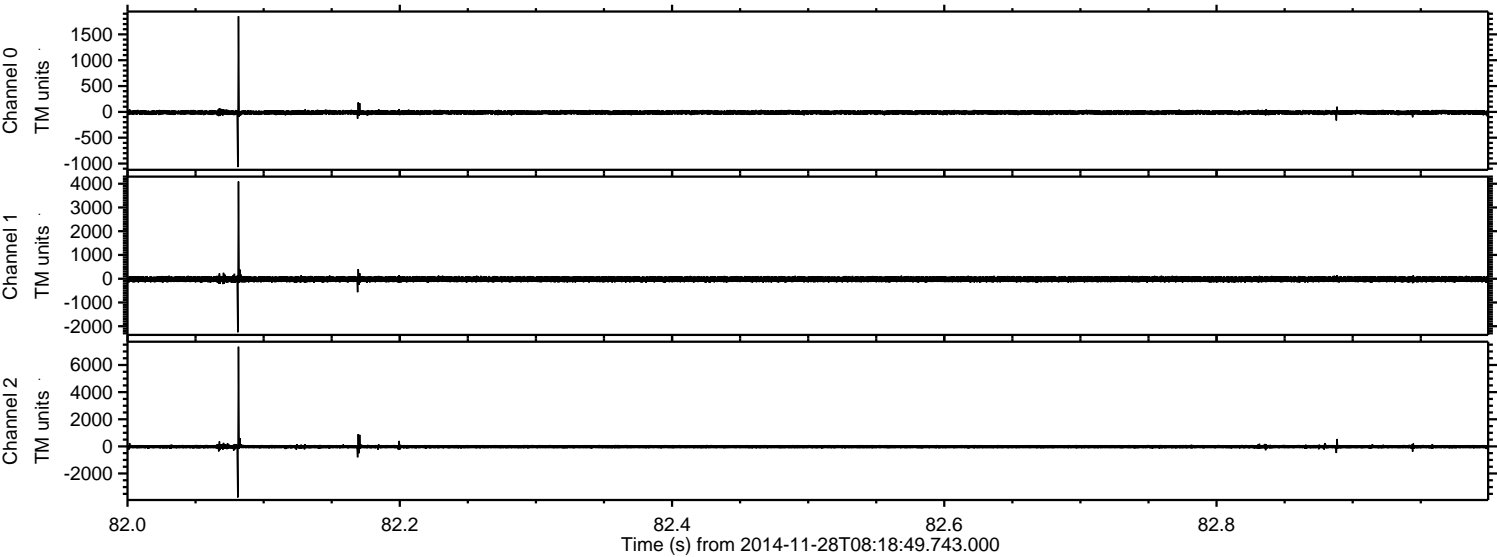
Channel 1
mn: -3867
mx: 3368
 μ : -21.2
 σ : 80.2

Channel 2
mn: -7755
mx: 6899
 μ : -22.5
 σ : 118.3

Processed Sat Nov 29 01:07:43 2014 by ELM ver.2012-10-06 from 001__elm20141128_081848__dat00.bin



Processed Sat Nov 29 01:07:44 2014 by ELM ver.2012-10-06 from 001__elm20141128_081848__dat00.bin



Processed Sat Nov 29 01:07:45 2014 by ELM ver.2012-10-06 from 001__elm20141128_081848__dat00.bin

