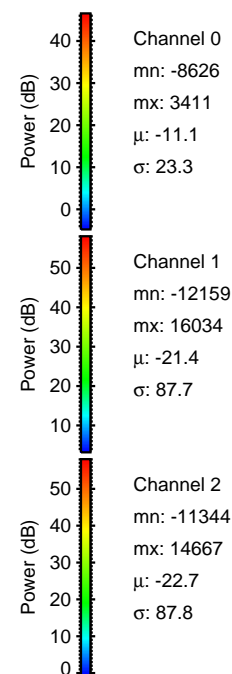
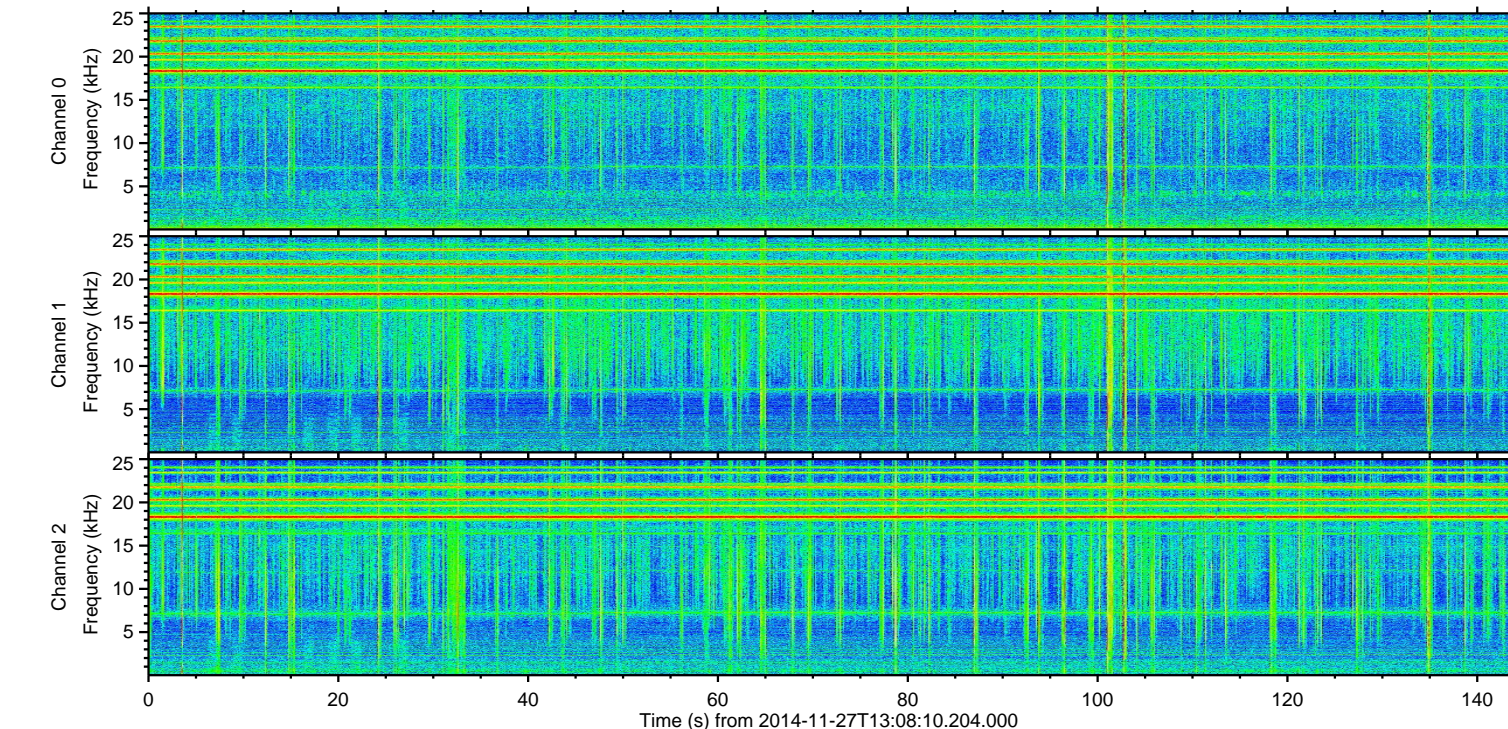
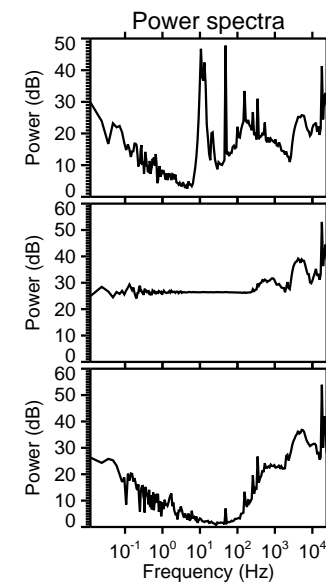
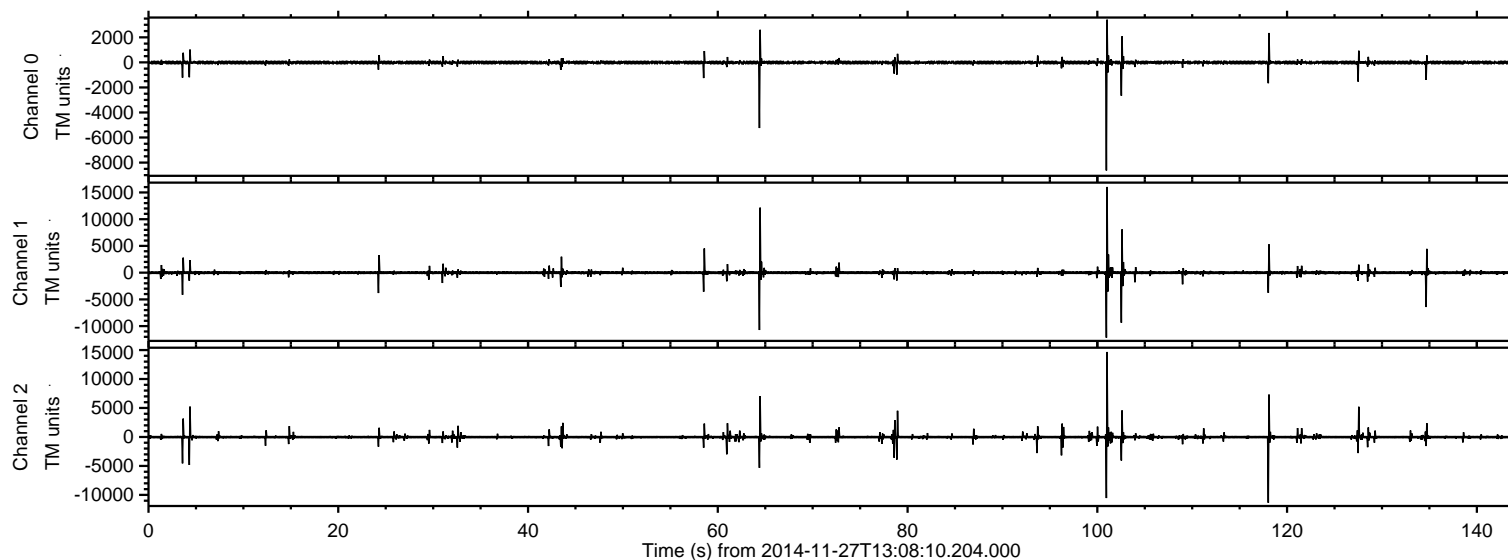


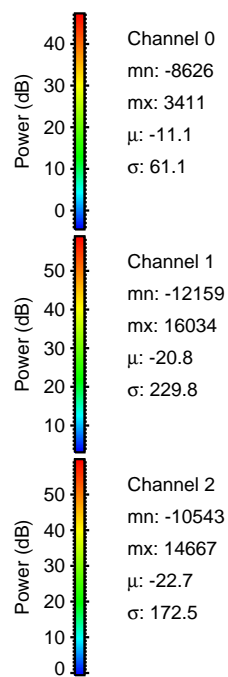
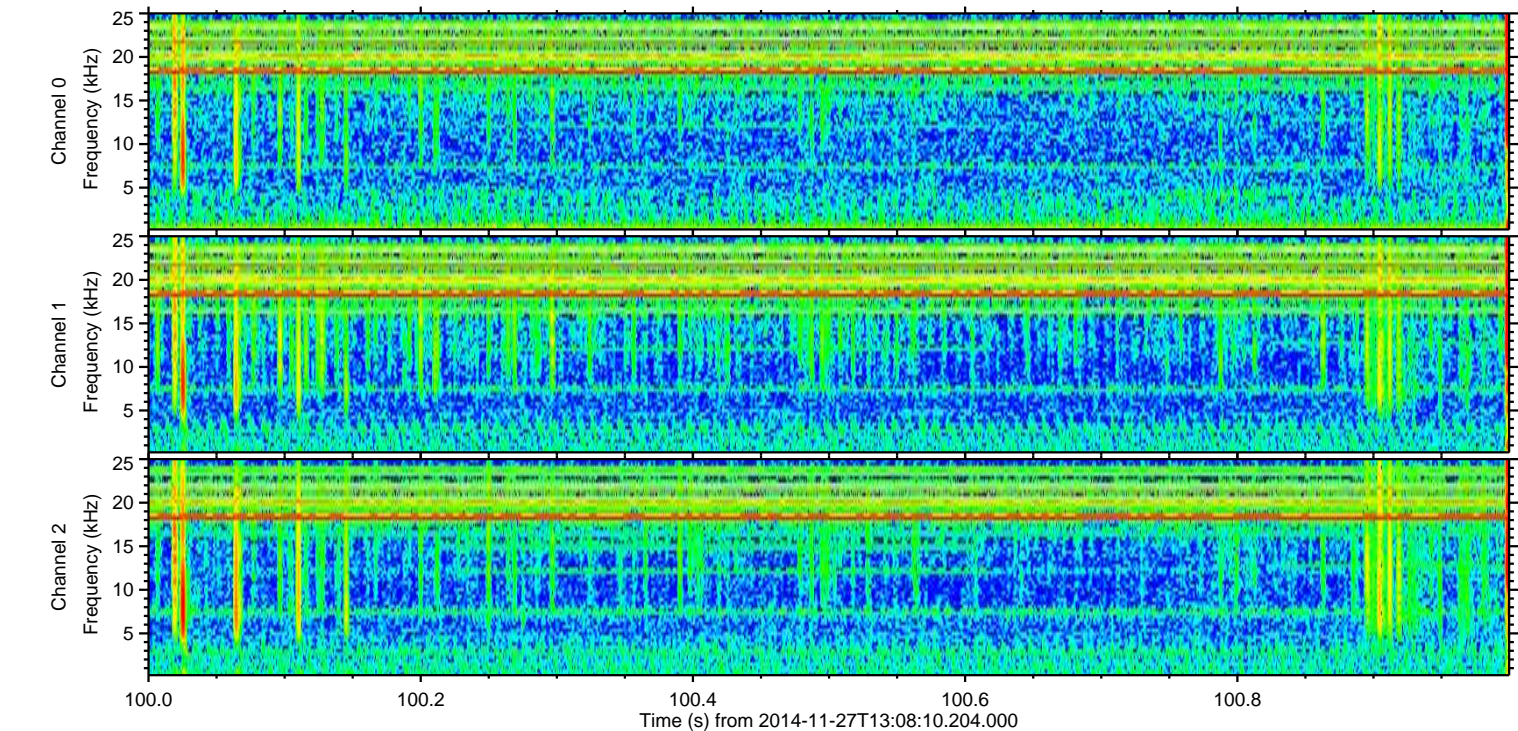
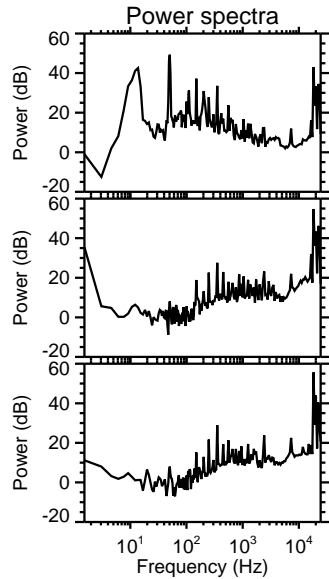
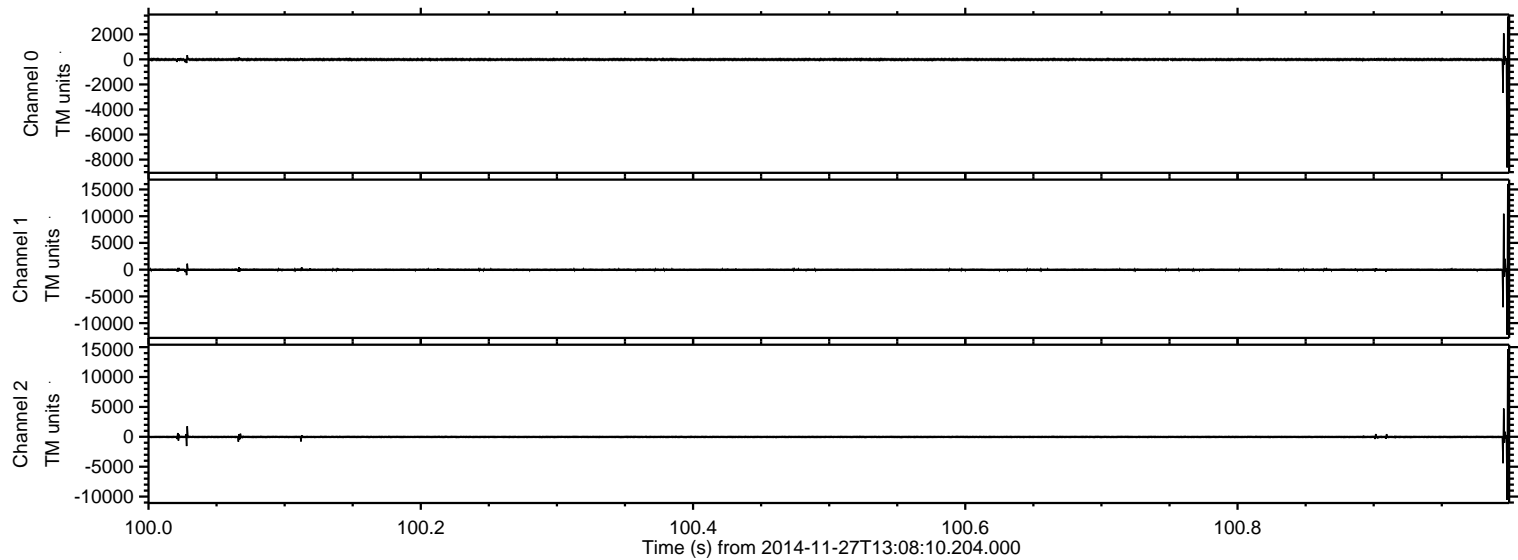
ELMAVAN 3D WAVEFORMS (Measured data sampled at 50 kHz) 49793 packets of 144 samples from 2014-11-27T13:08:10.204.000.

Processed Thu Nov 27 14:15:31 2014 by ELM ver.2012-10-06 from 001__elm20141127_130809__dat00.bin

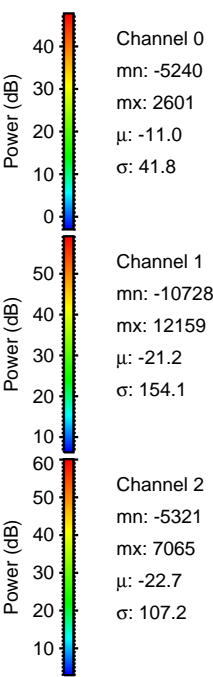
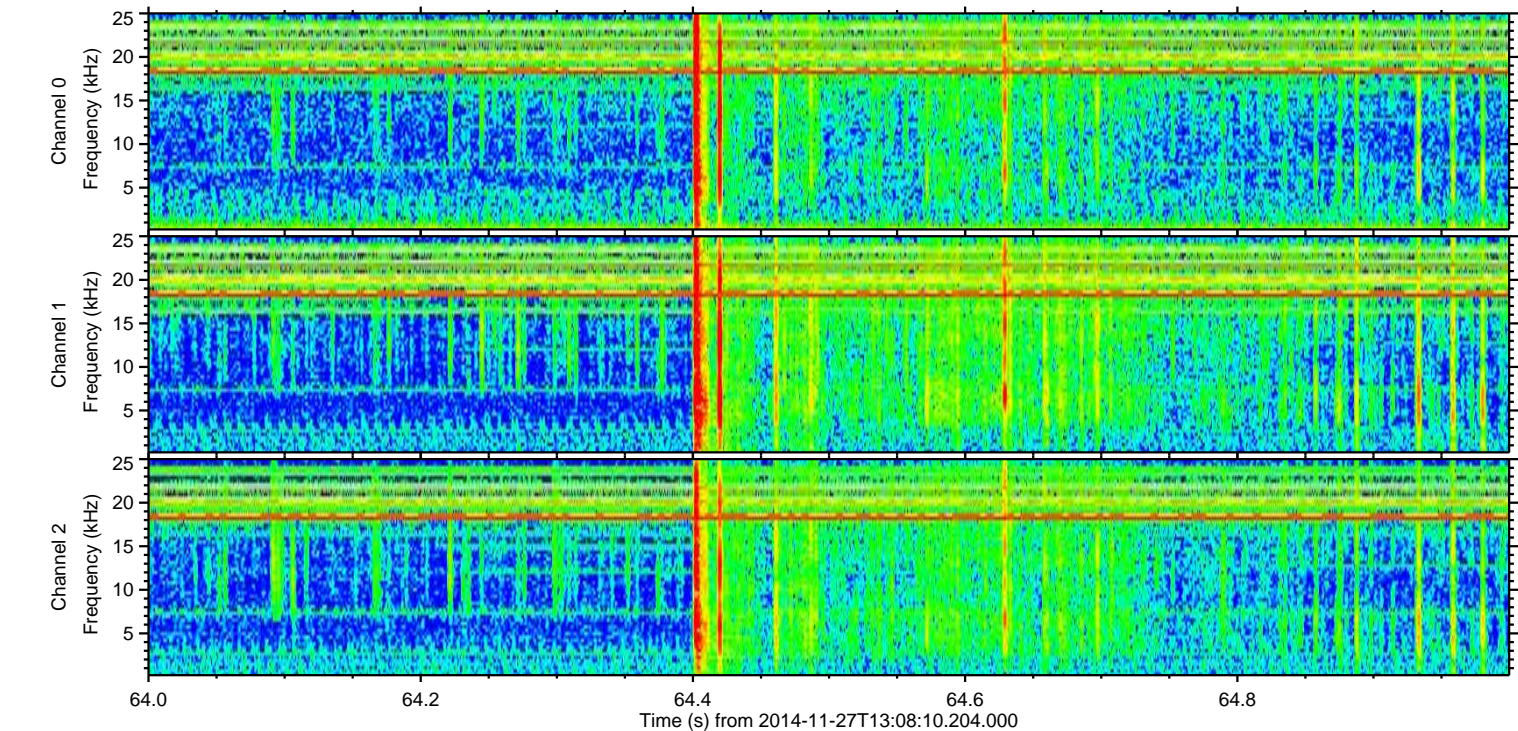
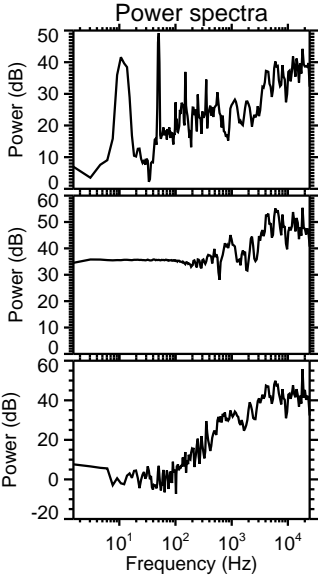
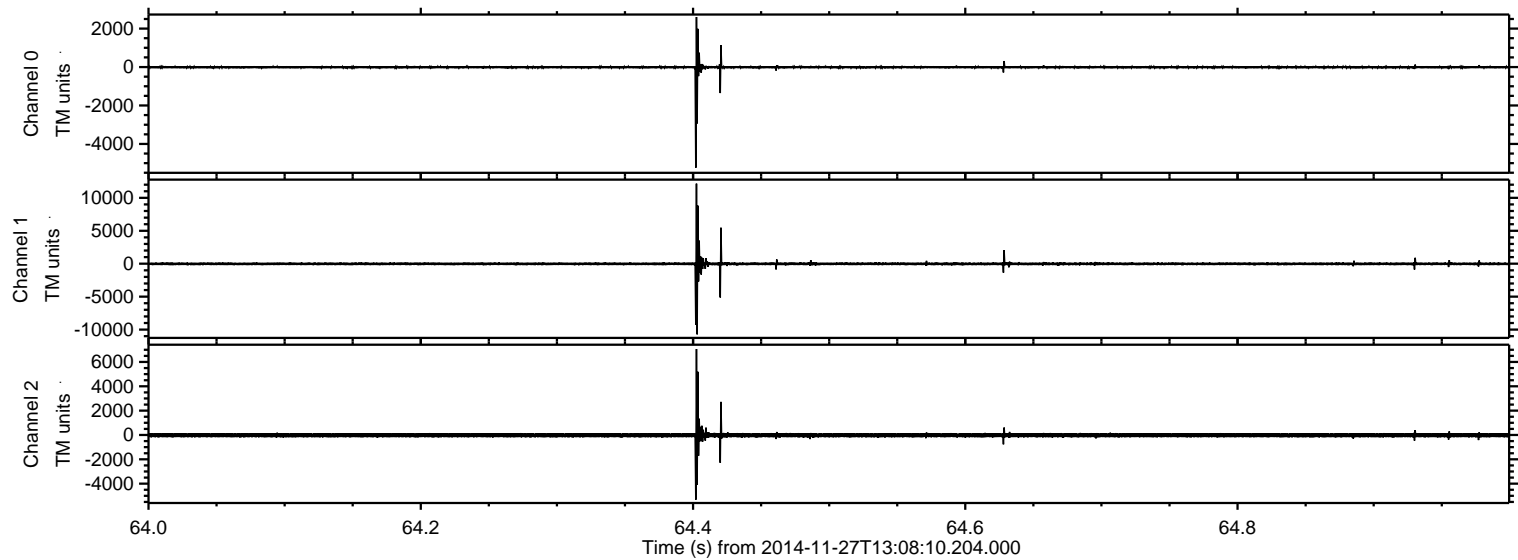


ELMAVAN 3D WAVEFORMS (Measured data sampled at 50 kHz) 49793 packets of 144 samples from 2014-11-27T13:08:10.204.000. Part 101/144

Processed Thu Nov 27 14:15:43 2014 by ELM ver.2012-10-06 from 001__elm20141127_130809__dat00.bin

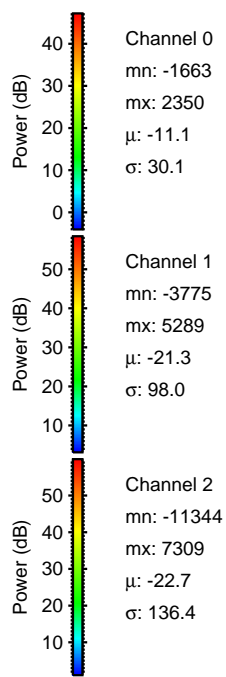
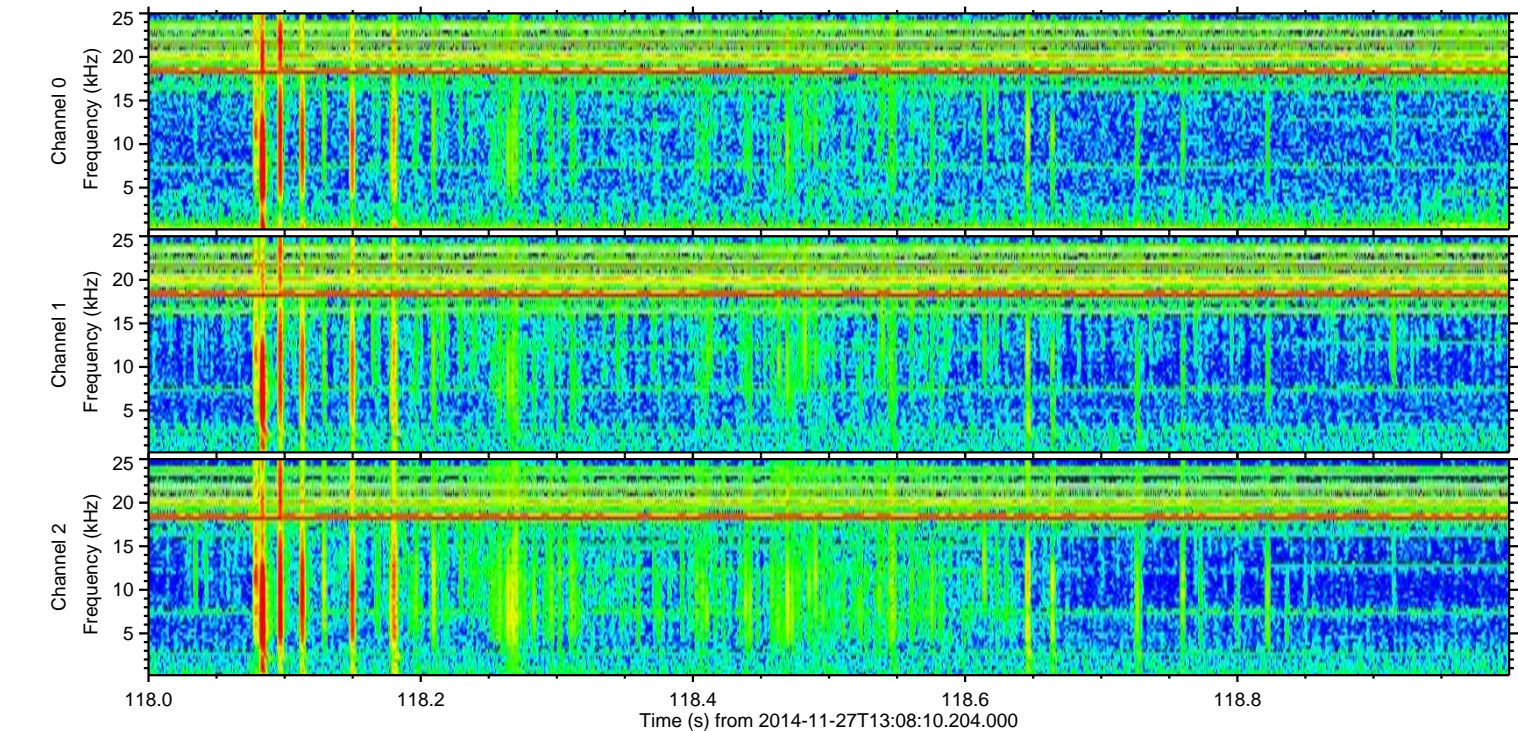
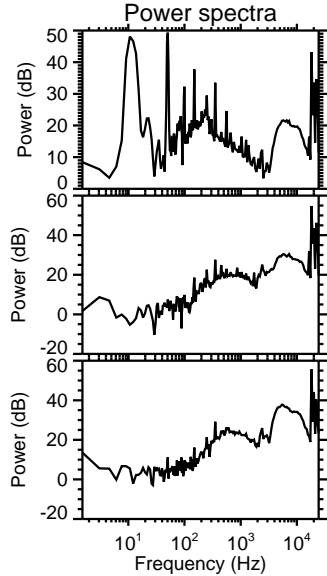
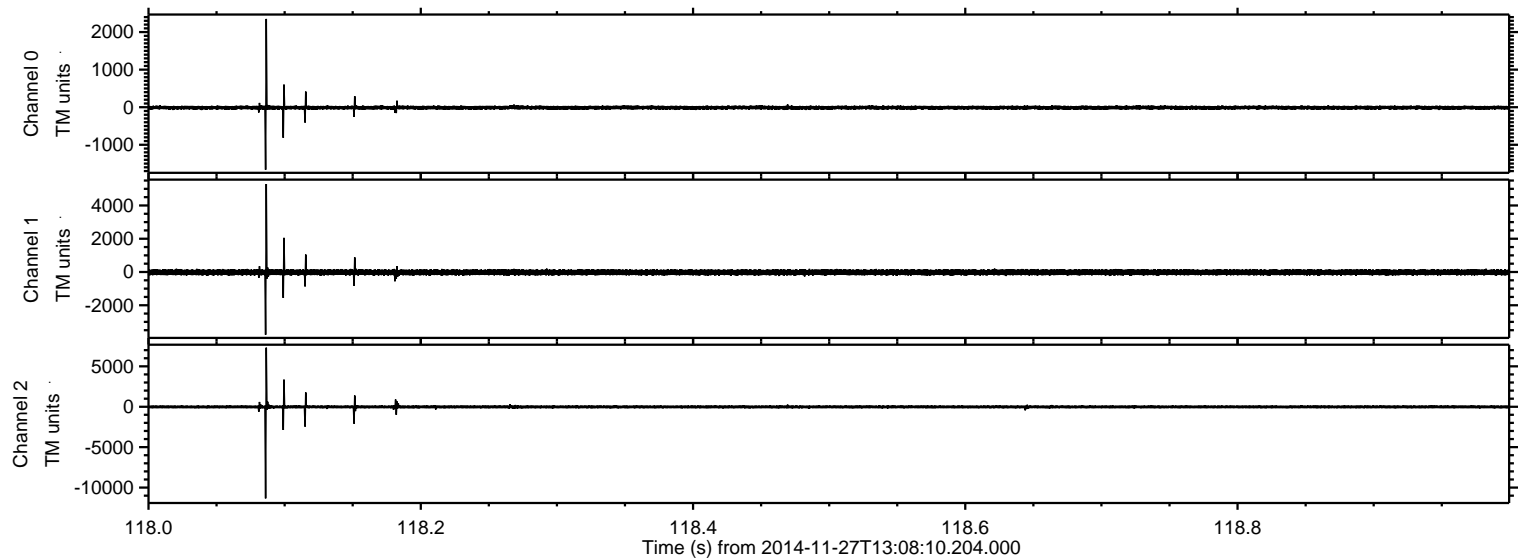


Processed Thu Nov 27 14:15:44 2014 by ELM ver.2012-10-06 from 001__elm20141127_130809__dat00.bin



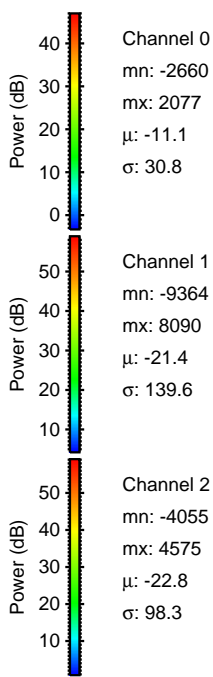
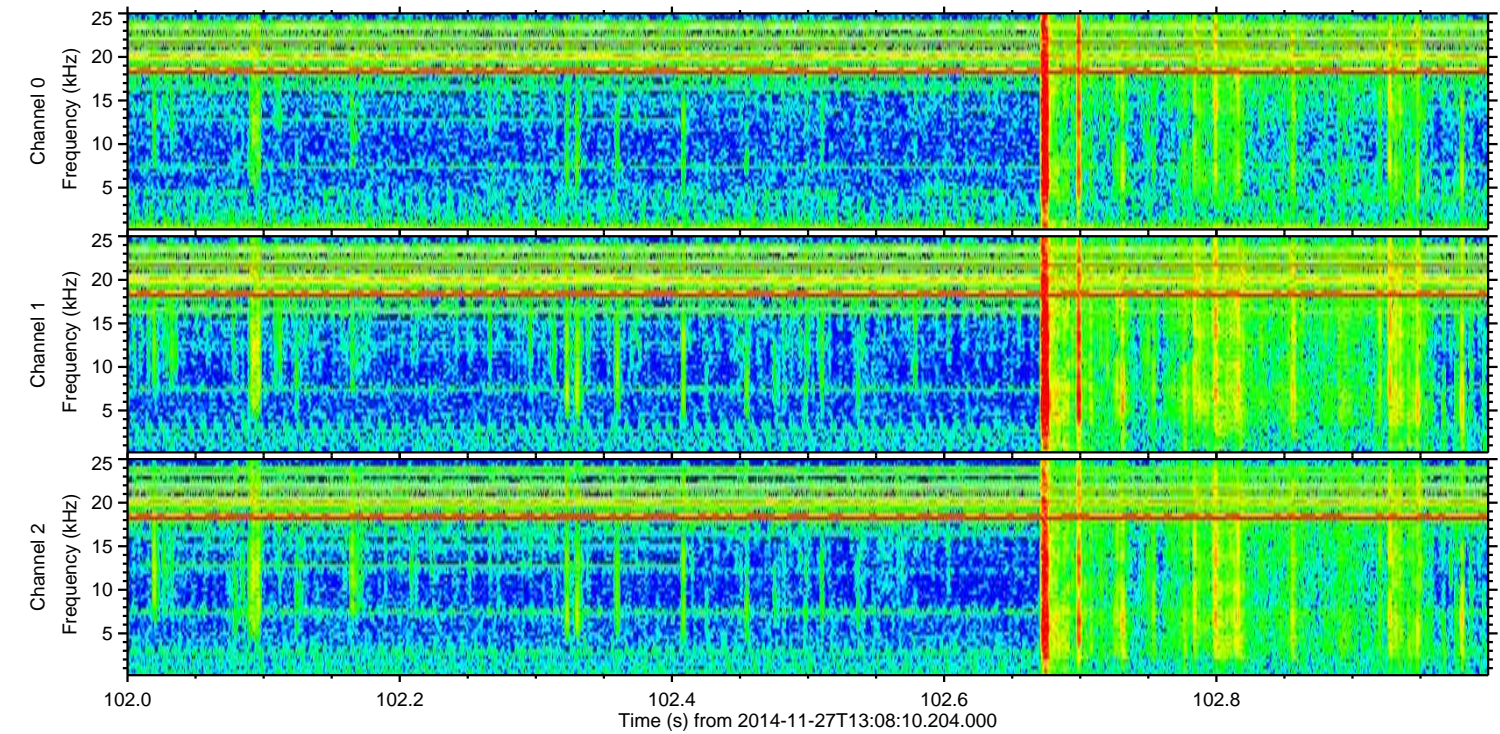
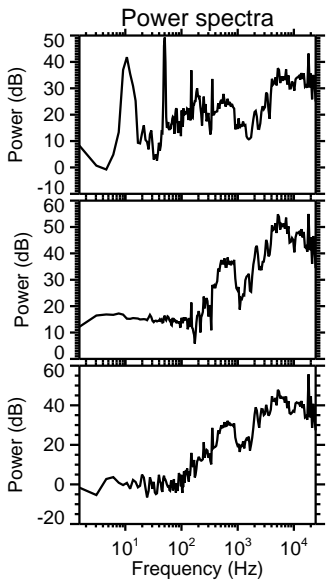
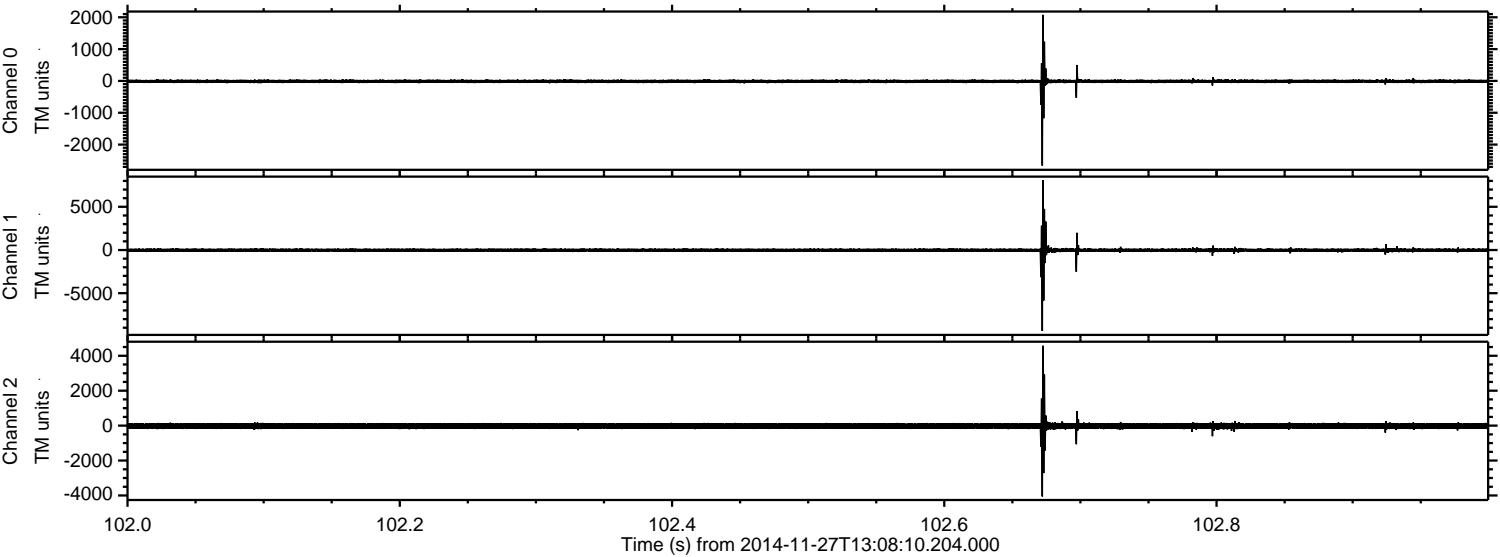
ELMAVAN 3D WAVEFORMS (Measured data sampled at 50 kHz) 49793 packets of 144 samples from 2014-11-27T13:08:10.204.000. Part 119/144

Processed Thu Nov 27 14:15:45 2014 by ELM ver.2012-10-06 from 001__elm20141127_130809__dat00.bin



ELMAVAN 3D WAVEFORMS (Measured data sampled at 50 kHz) 49793 packets of 144 samples from 2014-11-27T13:08:10.204.000. Part 103/144

Processed Thu Nov 27 14:15:46 2014 by ELM ver.2012-10-06 from 001__elm20141127_130809__dat00.bin



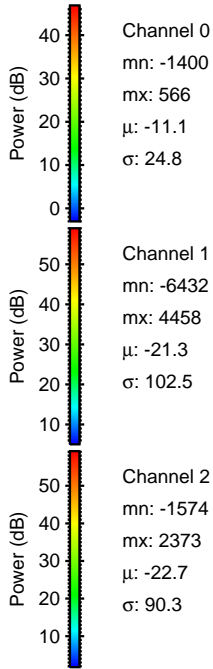
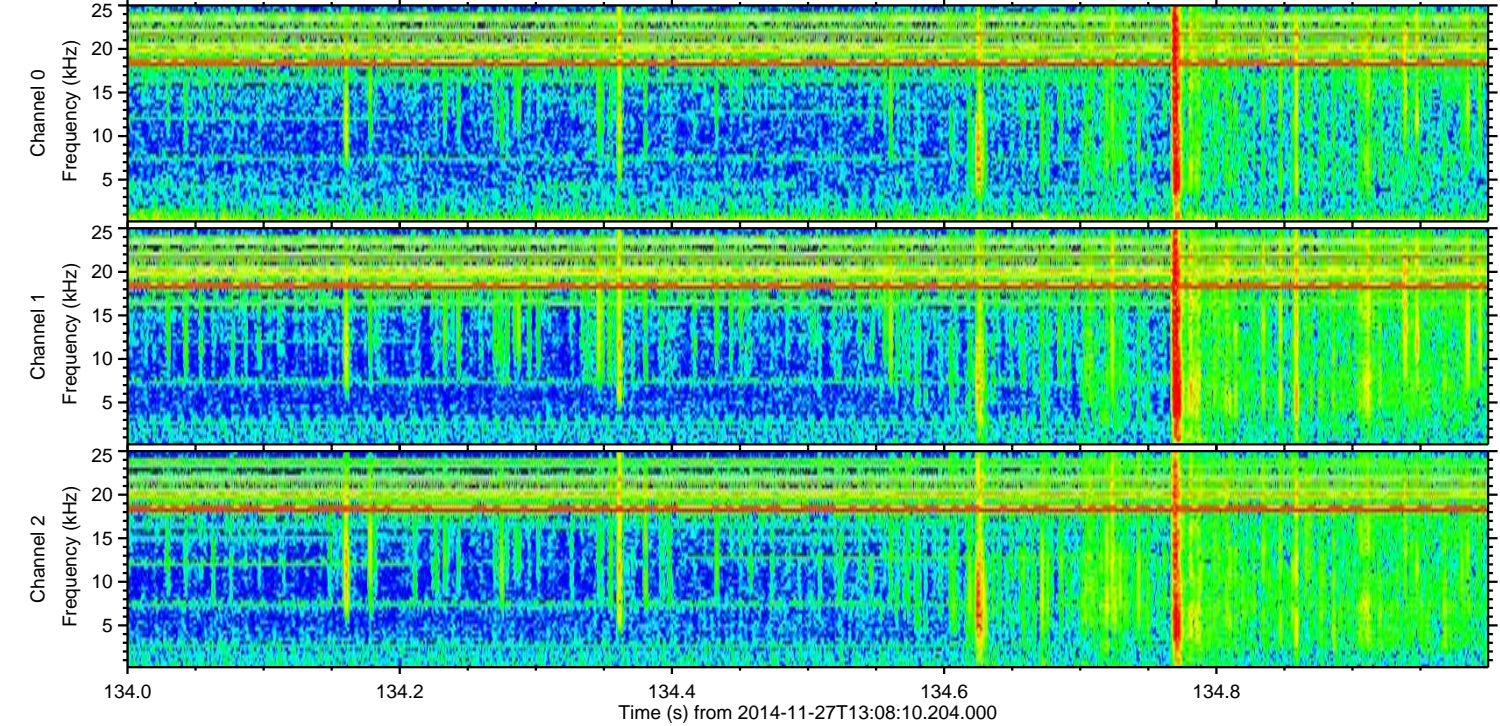
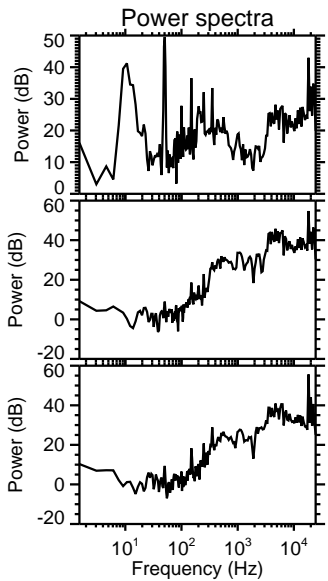
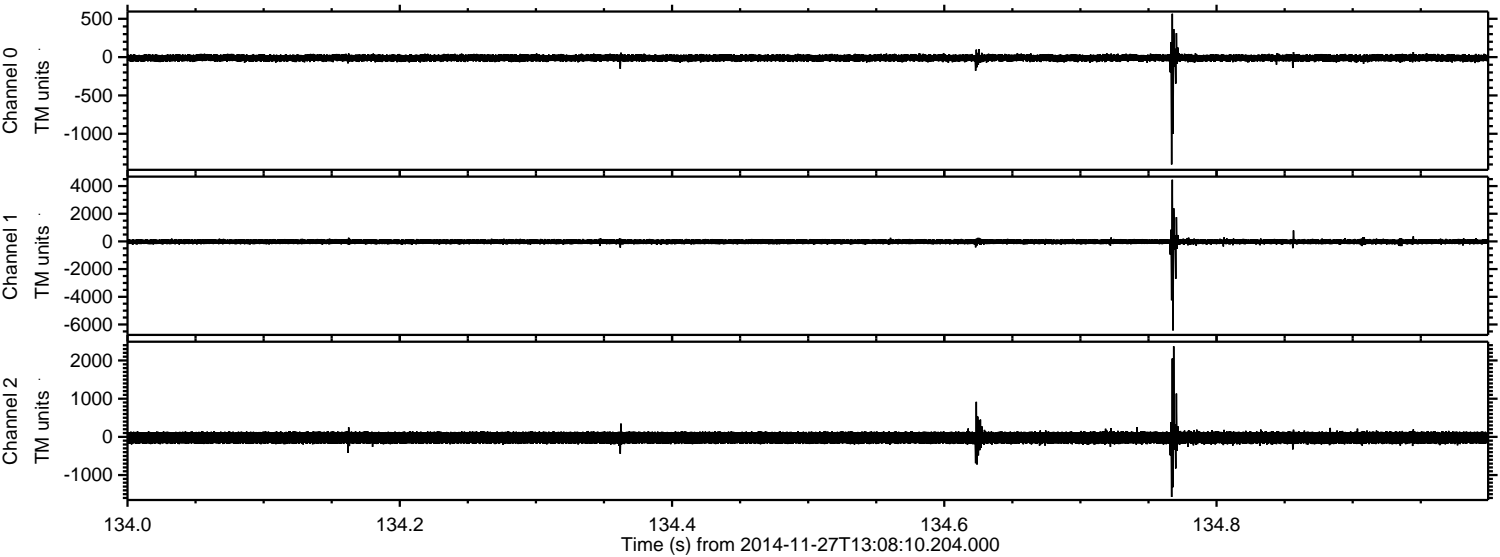
Channel 0
mn: -2660
mx: 2077
 μ : -11.1
 σ : 30.8

Channel 1
mn: -9364
mx: 8090
 μ : -21.4
 σ : 139.6

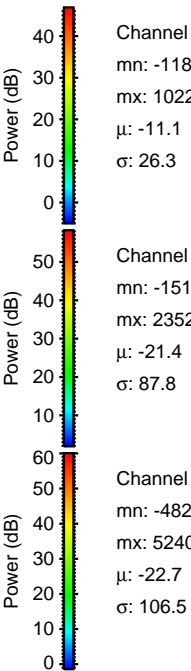
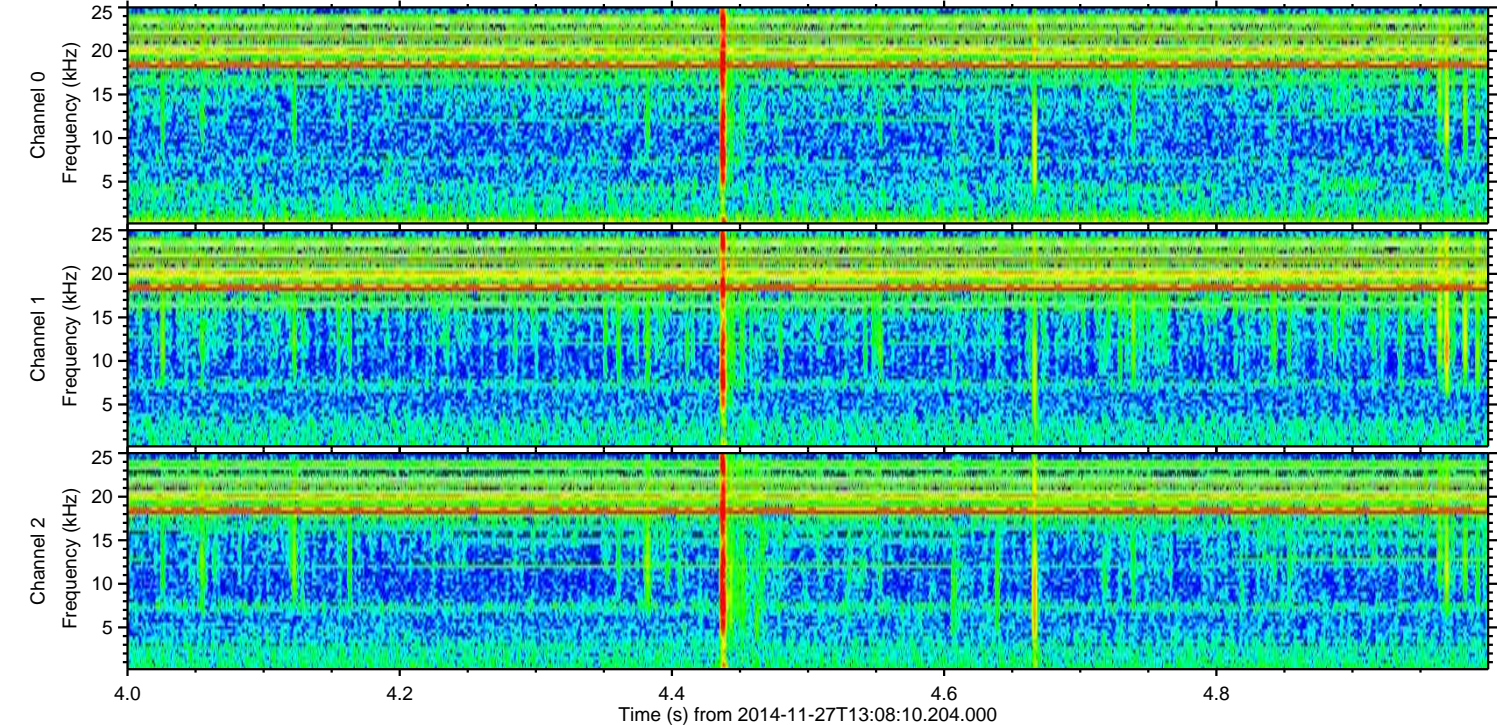
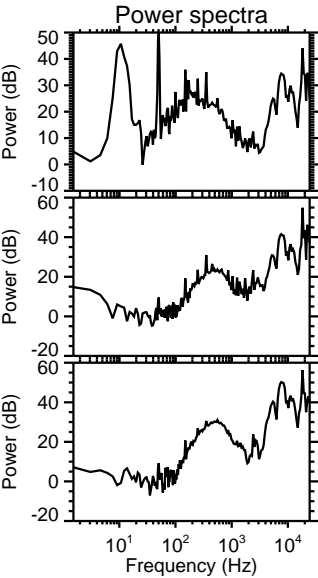
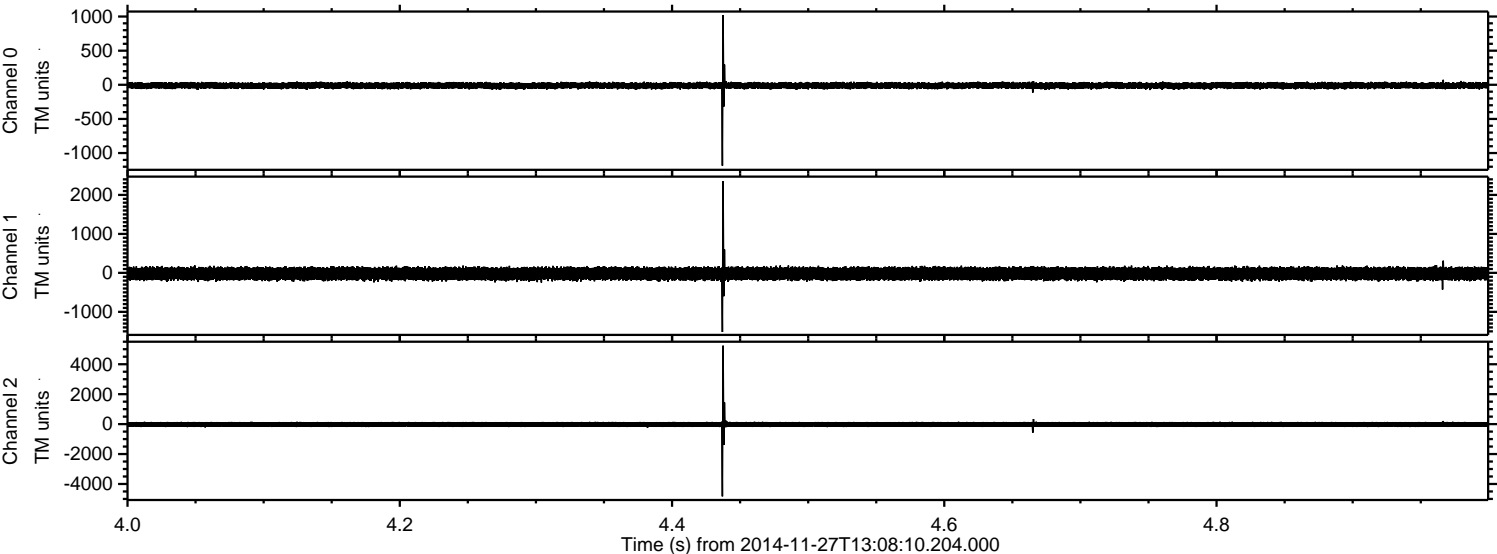
Channel 2
mn: -4055
mx: 4575
 μ : -22.8
 σ : 98.3

ELMAVAN 3D WAVEFORMS (Measured data sampled at 50 kHz) 49793 packets of 144 samples from 2014-11-27T13:08:10.204.000. Part 135/144

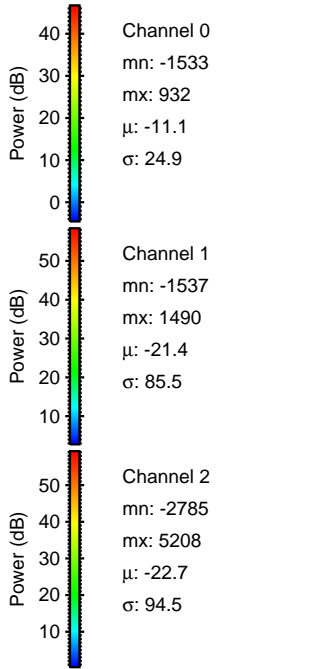
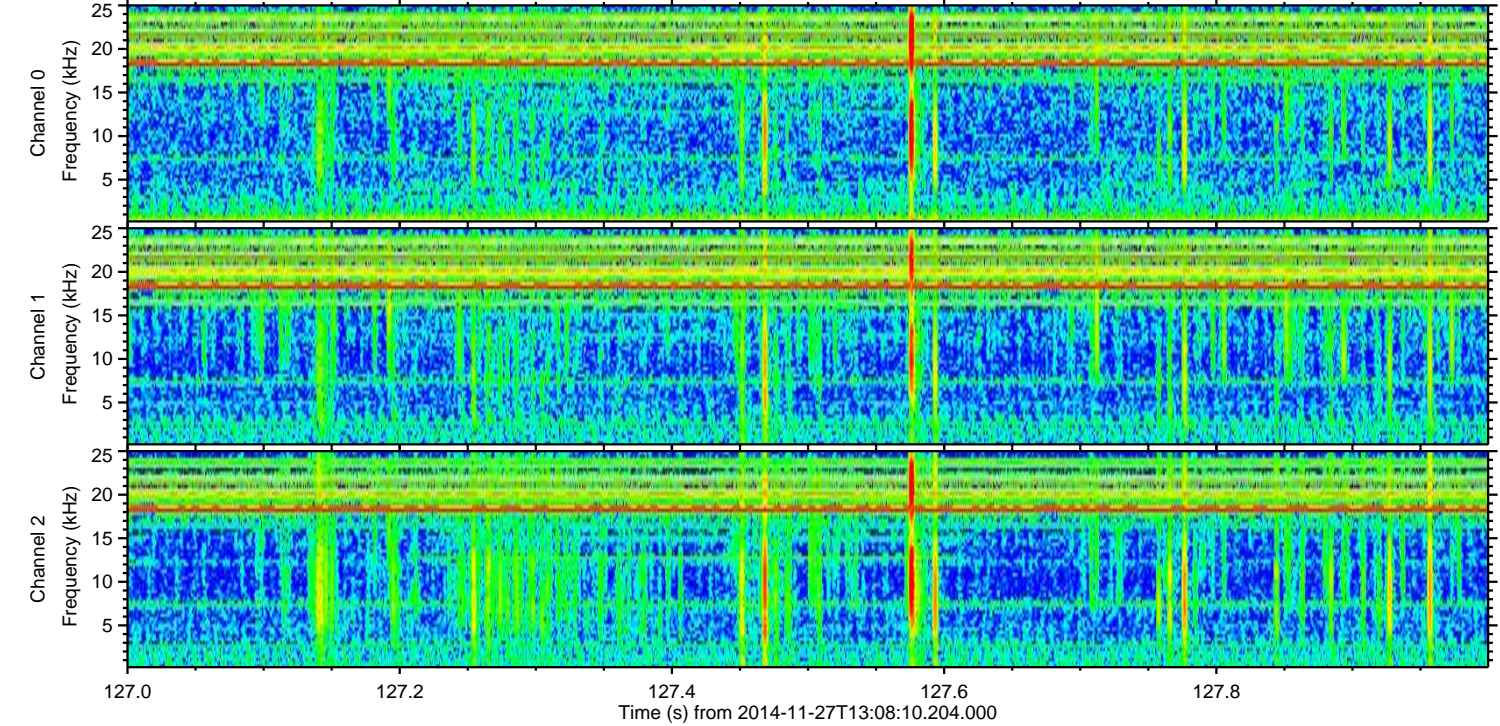
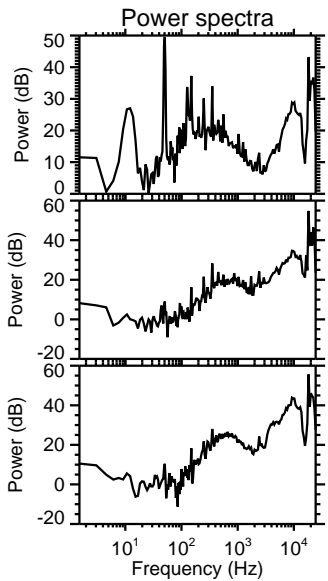
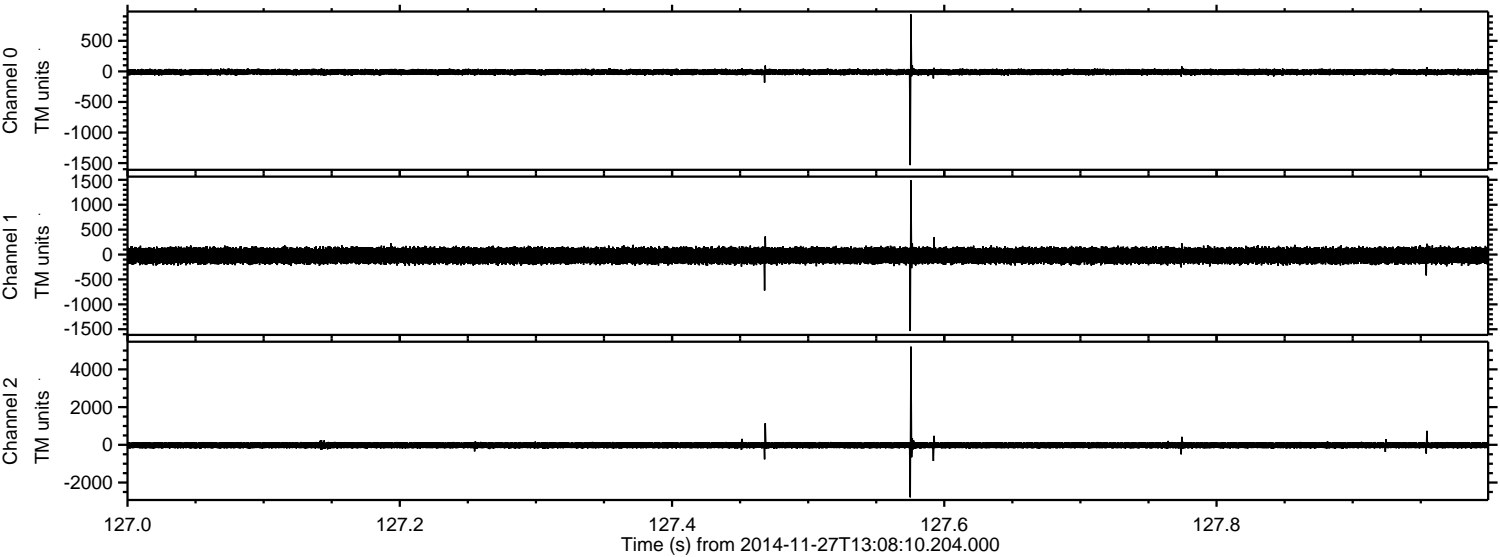
Processed Thu Nov 27 14:15:47 2014 by ELM ver.2012-10-06 from 001__elm20141127_130809__dat00.bin



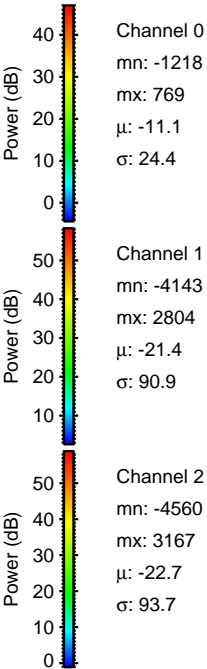
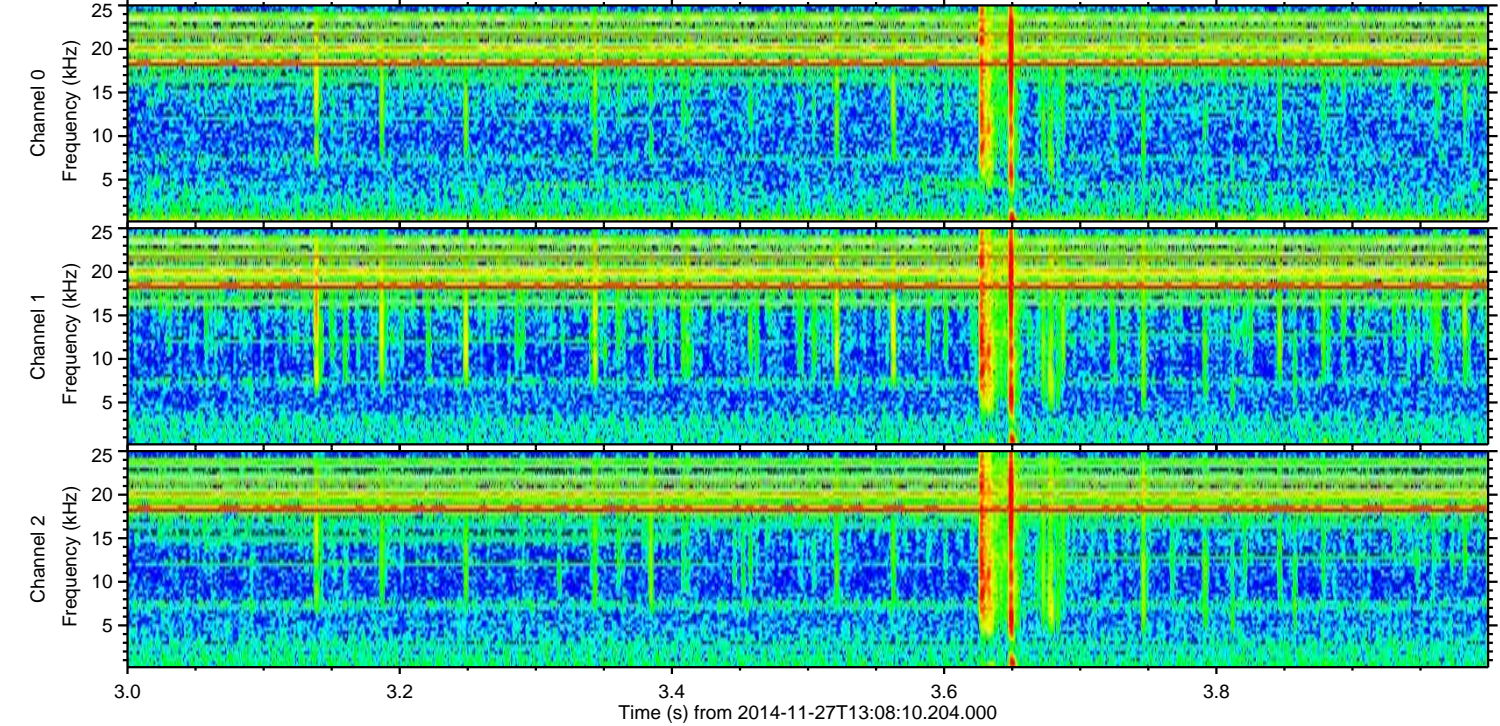
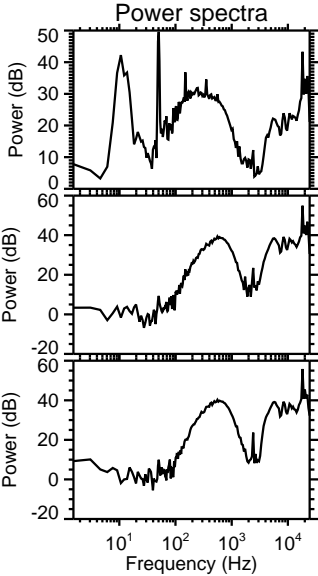
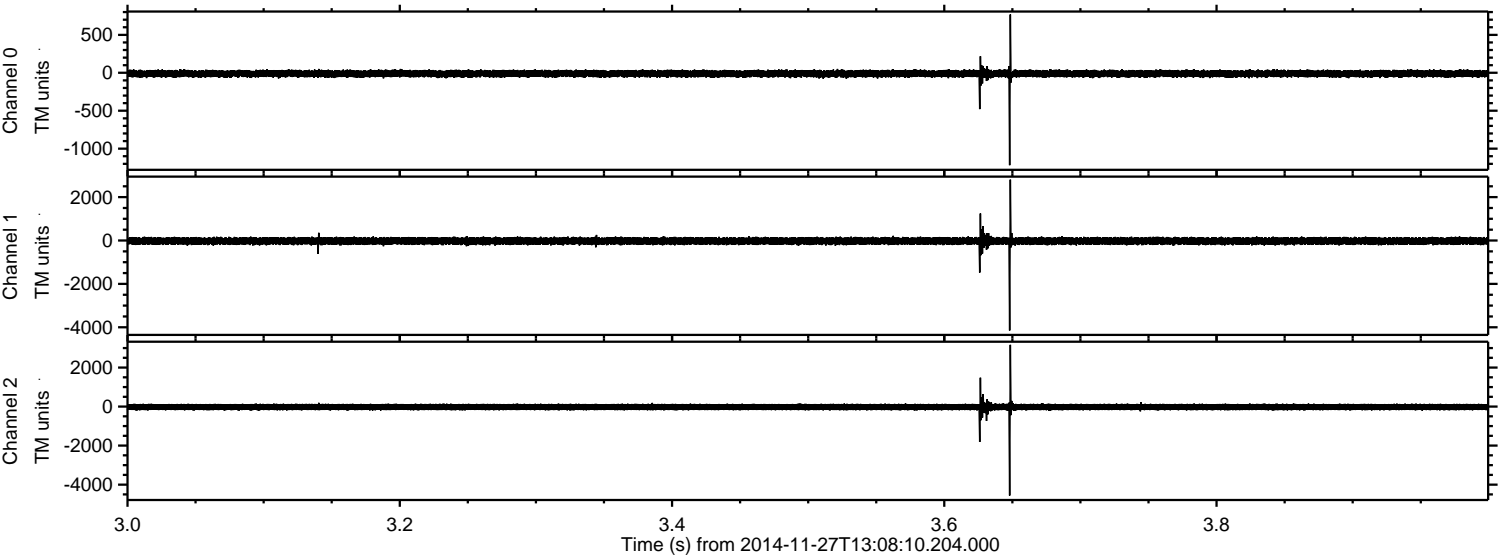
Processed Thu Nov 27 14:15:48 2014 by ELM ver.2012-10-06 from 001__elm20141127_130809__dat00.bin



Processed Thu Nov 27 14:15:49 2014 by ELM ver.2012-10-06 from 001__elm20141127_130809__dat00.bin



Processed Thu Nov 27 14:15:49 2014 by ELM ver.2012-10-06 from 001__elm20141127_130809__dat00.bin

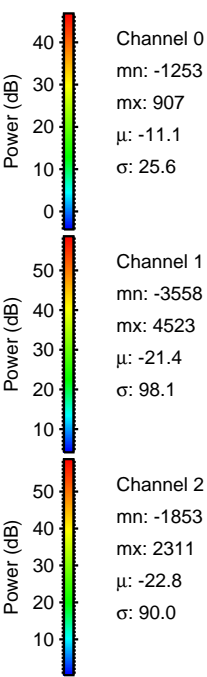
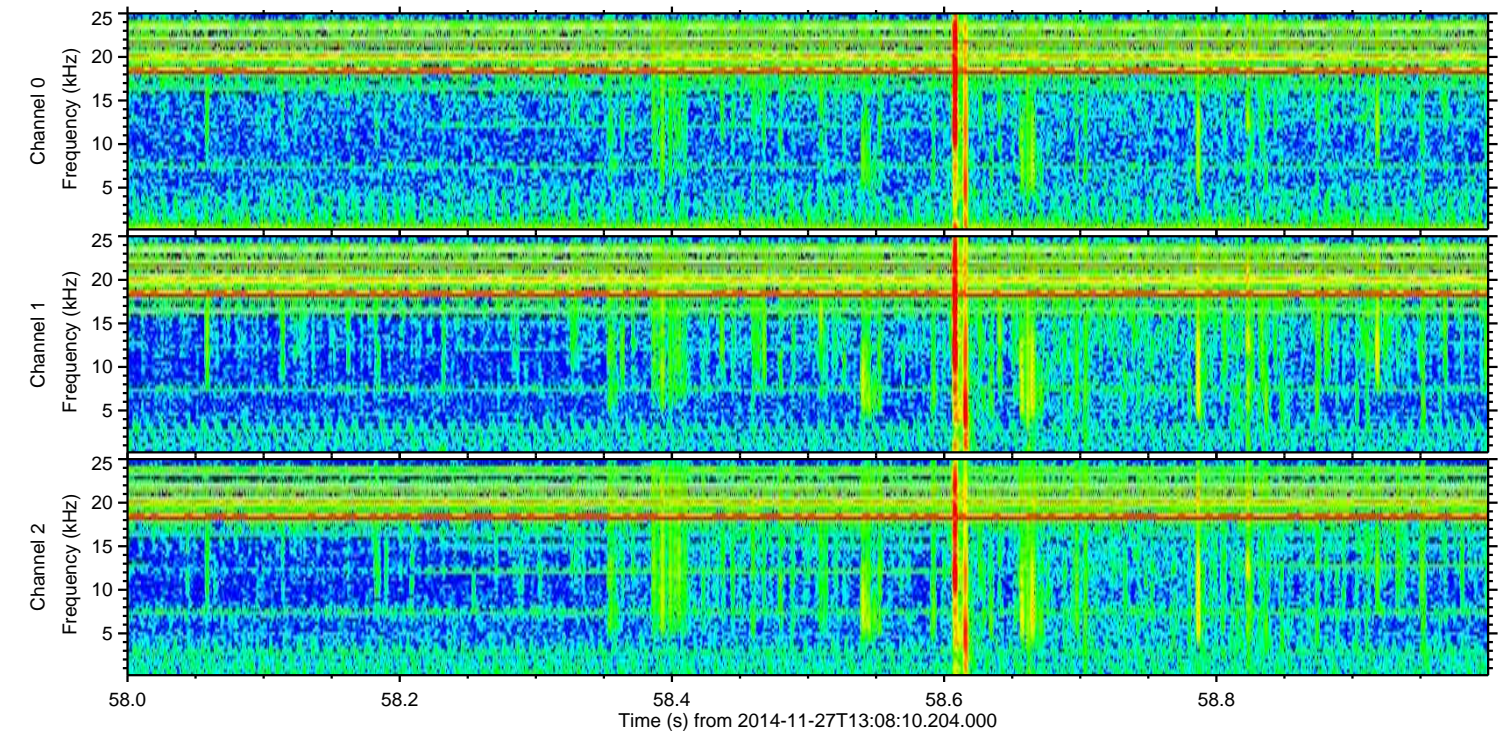
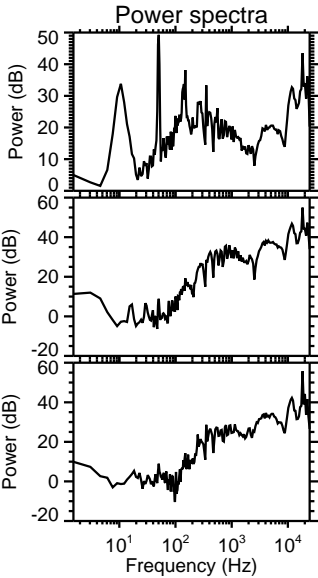
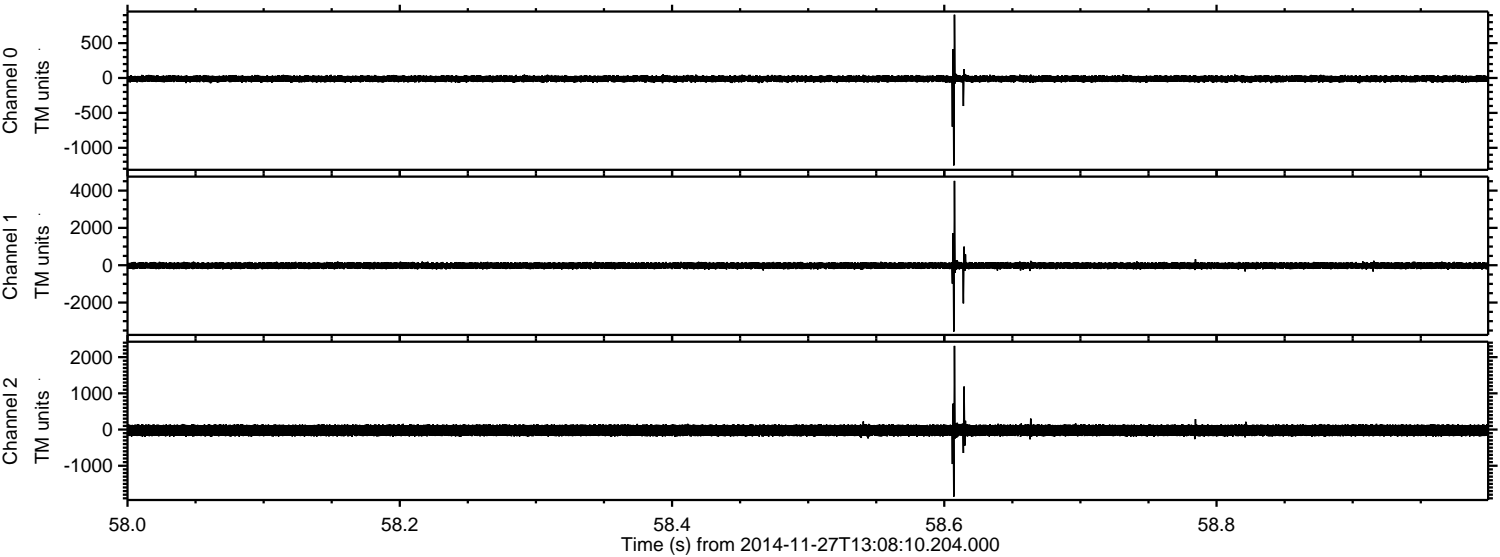


Channel 0
mn: -1218
mx: 769
 μ : -11.1
 σ : 24.4

Channel 1
mn: -4143
mx: 2804
 μ : -21.4
 σ : 90.9

Channel 2
mn: -4560
mx: 3167
 μ : -22.7
 σ : 93.7

Processed Thu Nov 27 14:15:50 2014 by ELM ver.2012-10-06 from 001__elm20141127_130809__dat00.bin



Processed Thu Nov 27 14:15:51 2014 by ELM ver.2012-10-06 from 001__elm20141127_130809__dat00.bin

