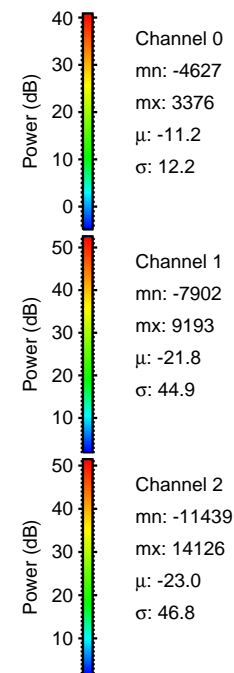
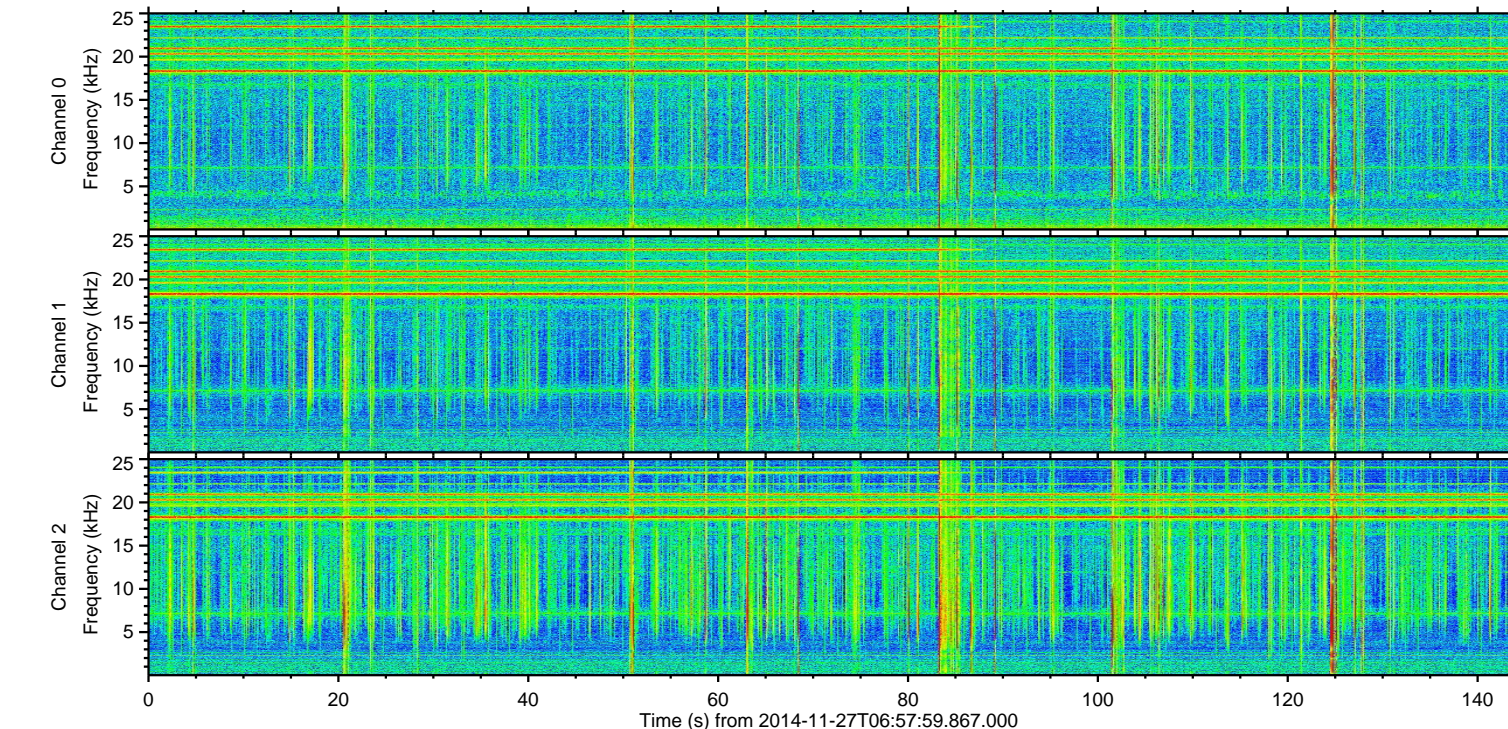
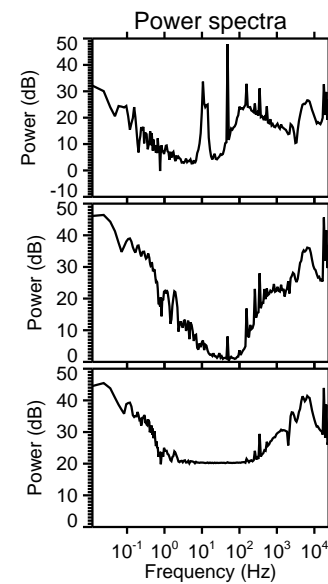
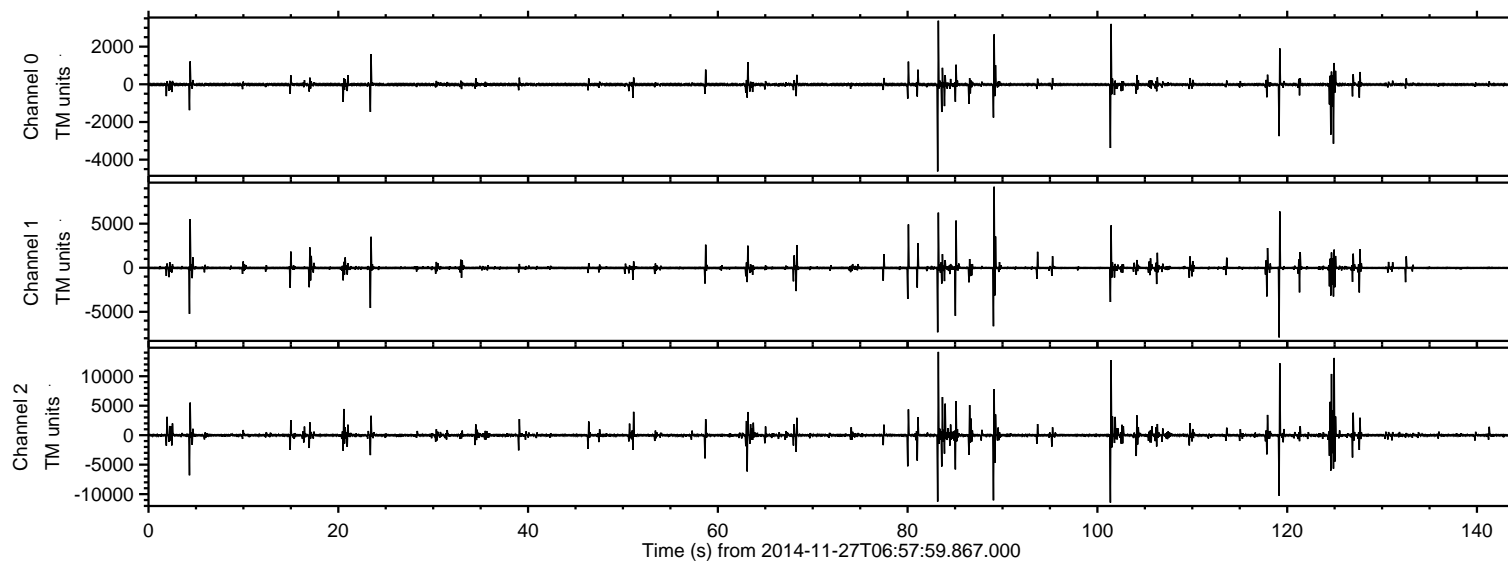
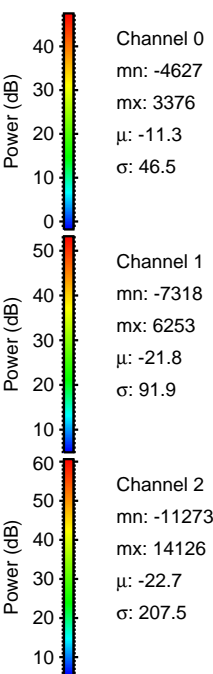
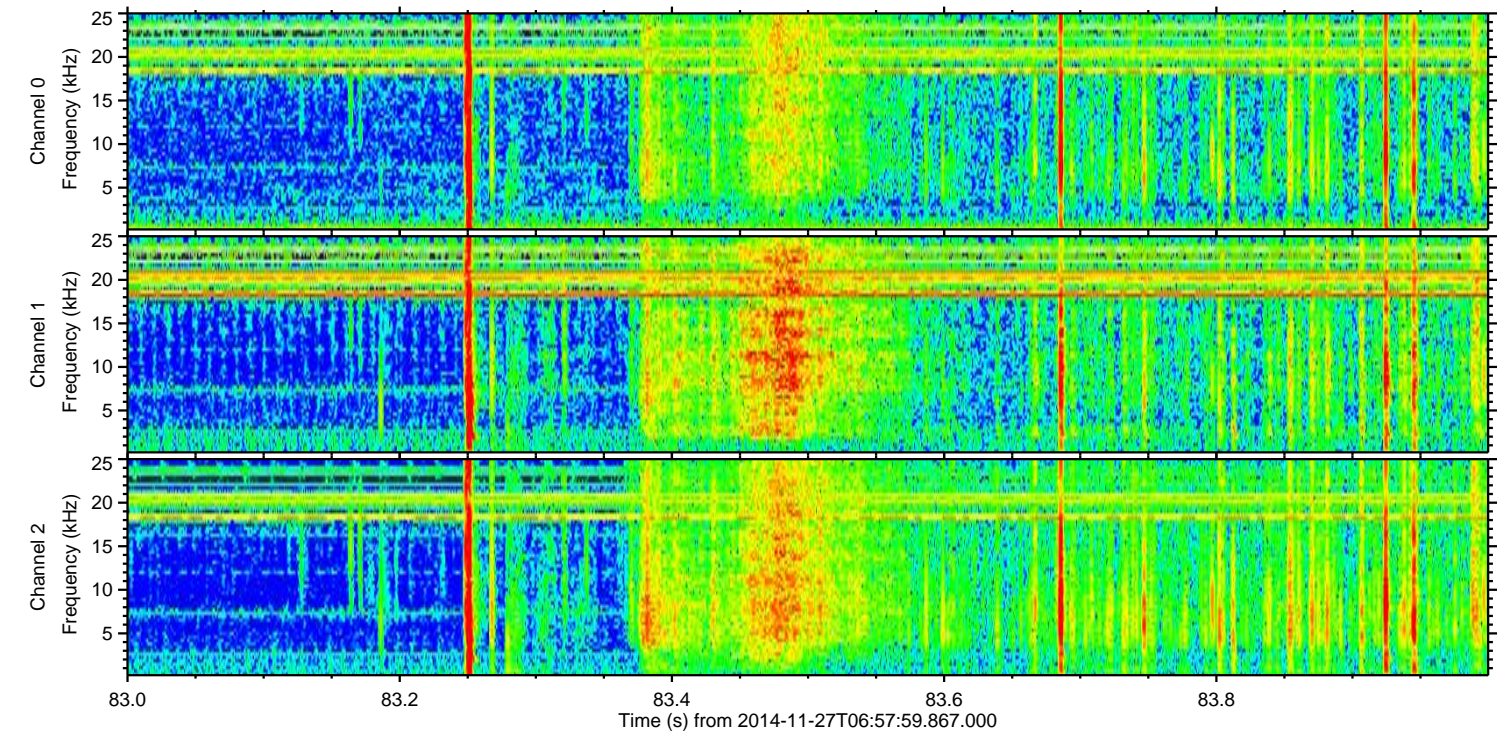
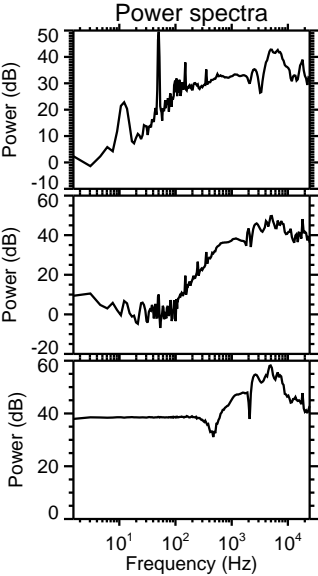
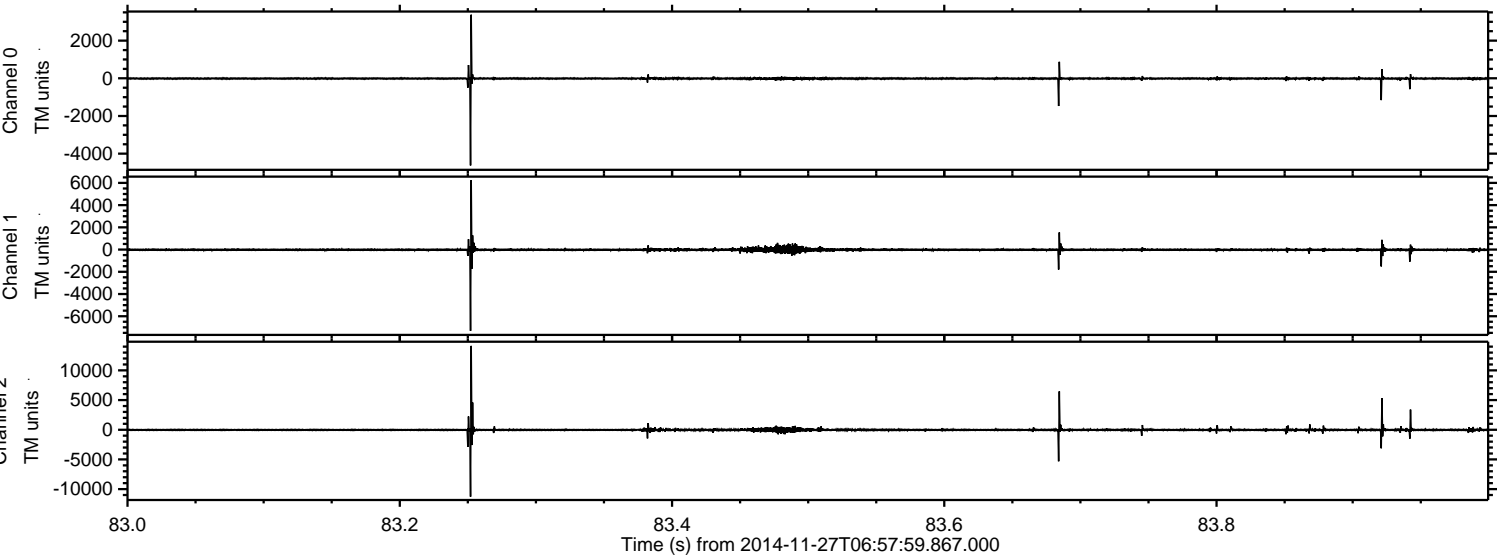


ELMAVAN 3D WAVEFORMS (Measured data sampled at 50 kHz) 49789 packets of 144 samples from 2014-11-27T06:57:59.867.000.

Processed Thu Nov 27 08:05:26 2014 by ELM ver.2012-10-06 from 001__elm20141127_065758__dat00.bin

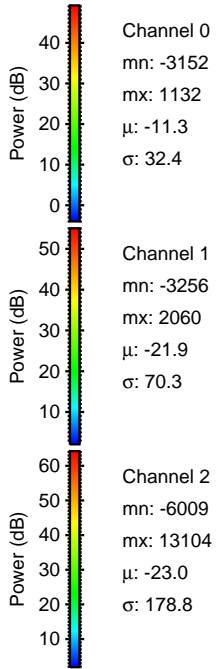
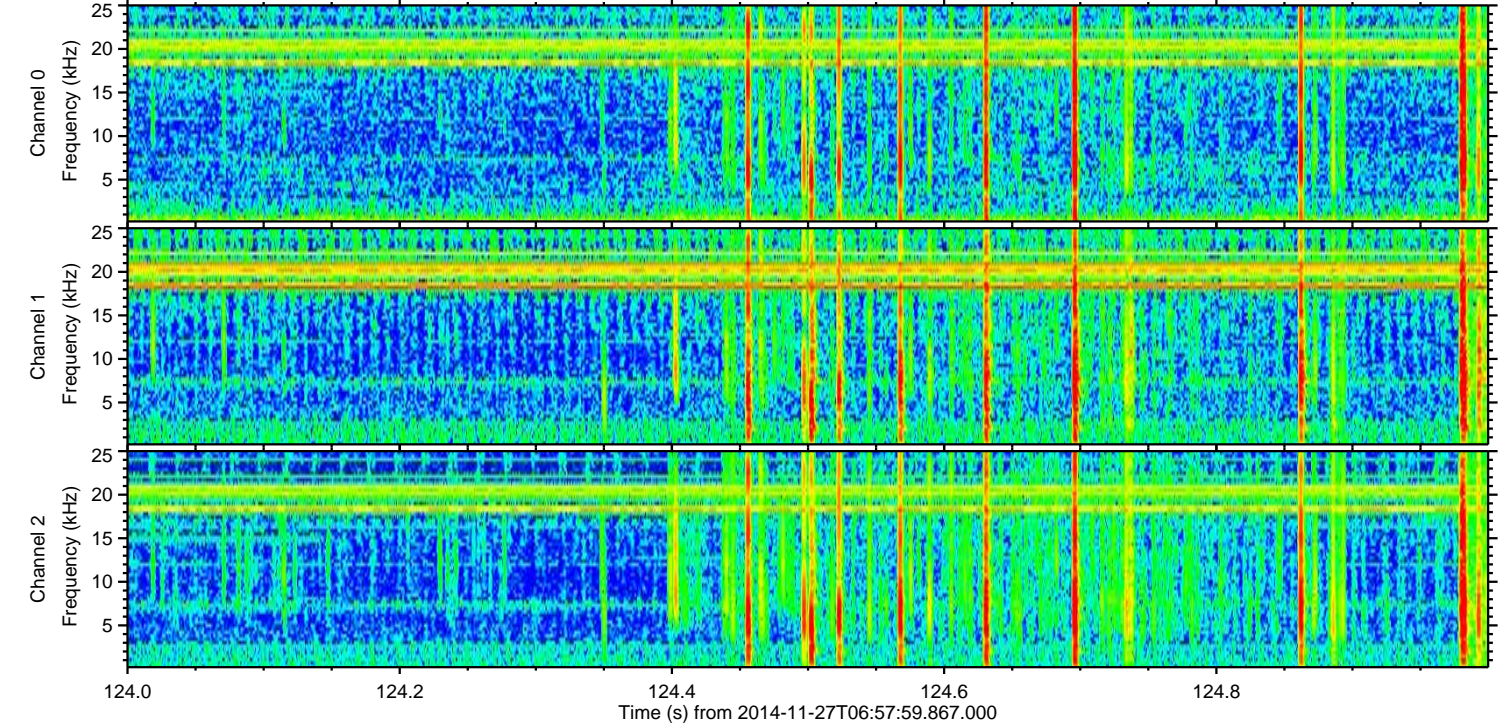
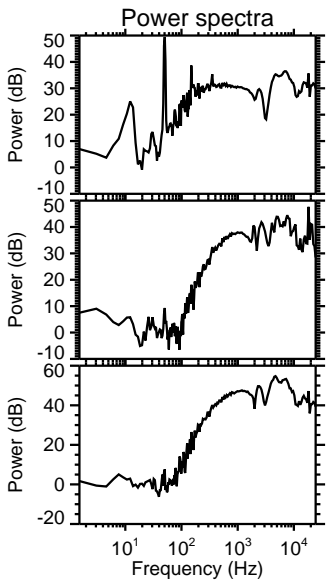
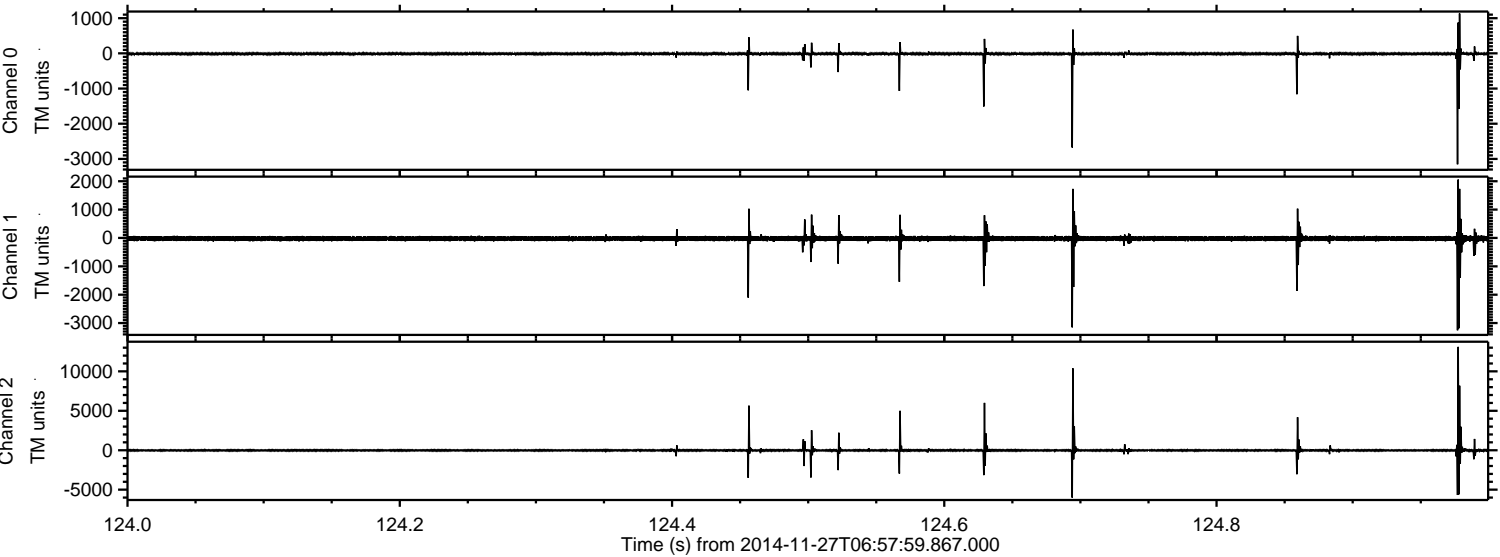


Processed Thu Nov 27 08:05:44 2014 by ELM ver.2012-10-06 from 001__elm20141127_065758__dat00.bin



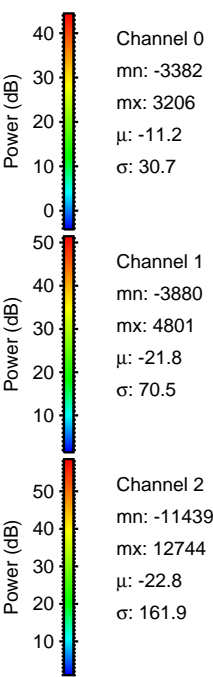
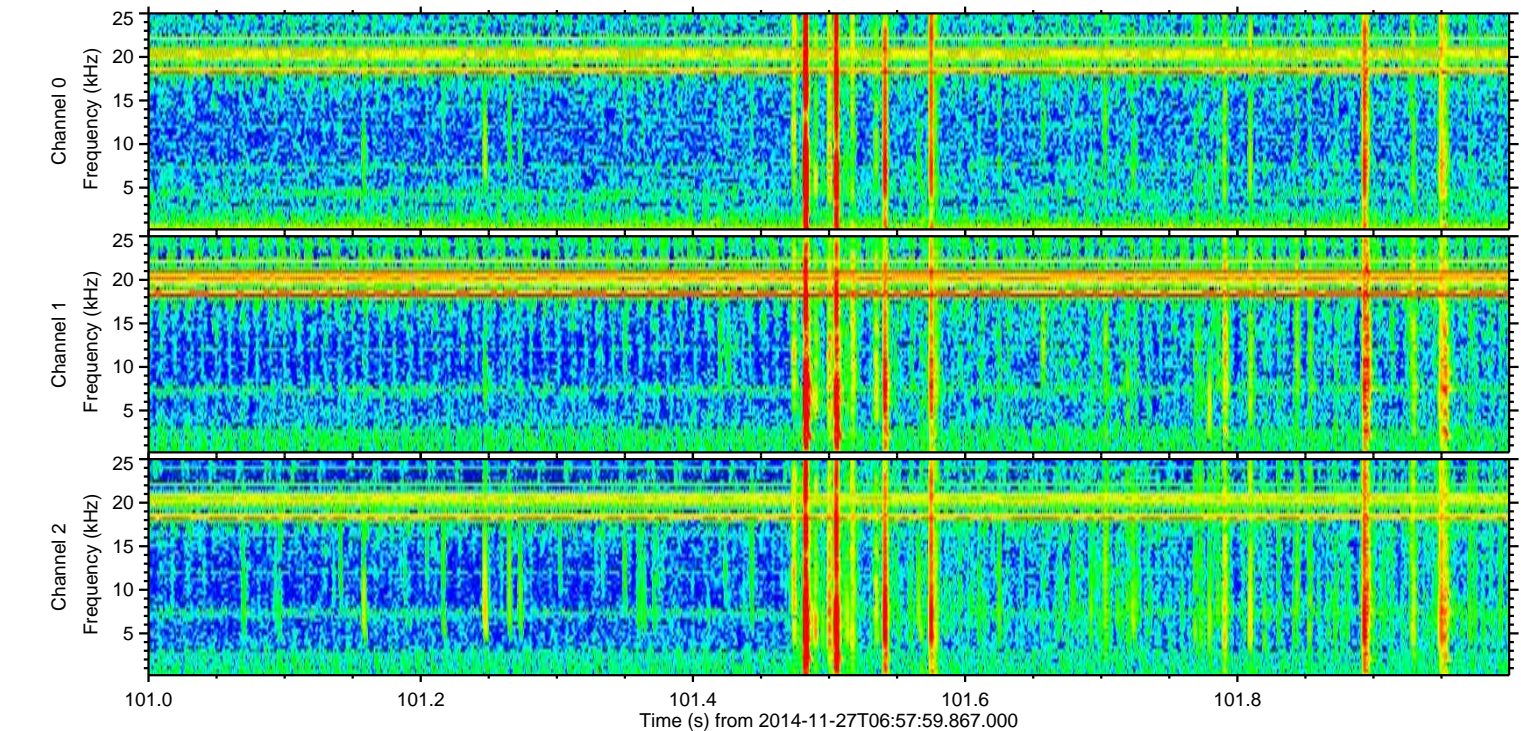
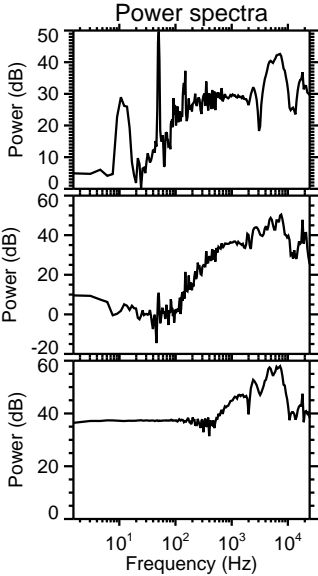
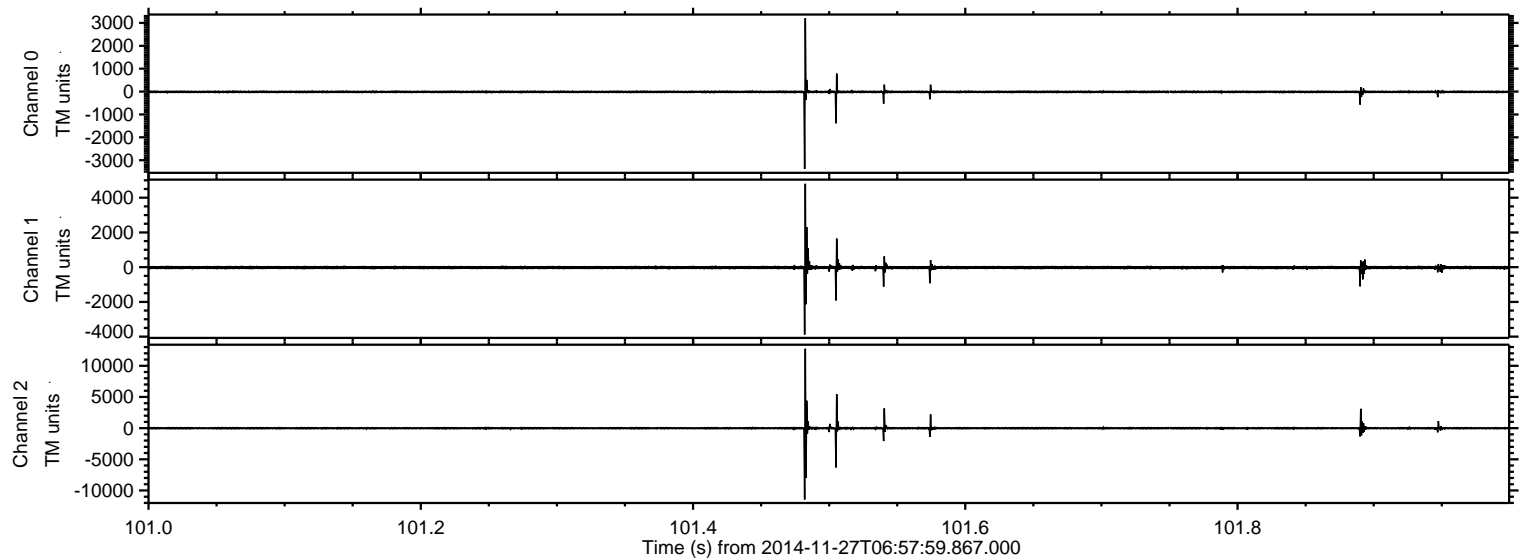
ELMAVAN 3D WAVEFORMS (Measured data sampled at 50 kHz) 49789 packets of 144 samples from 2014-11-27T06:57:59.867.000. Part 125/144

Processed Thu Nov 27 08:05:46 2014 by ELM ver.2012-10-06 from 001__elm20141127_065758__dat00.bin



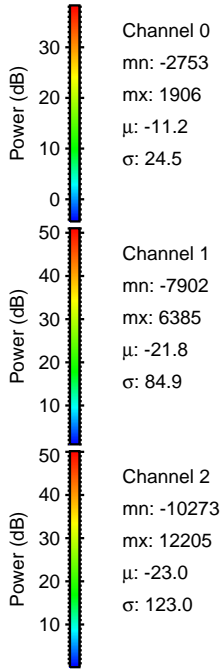
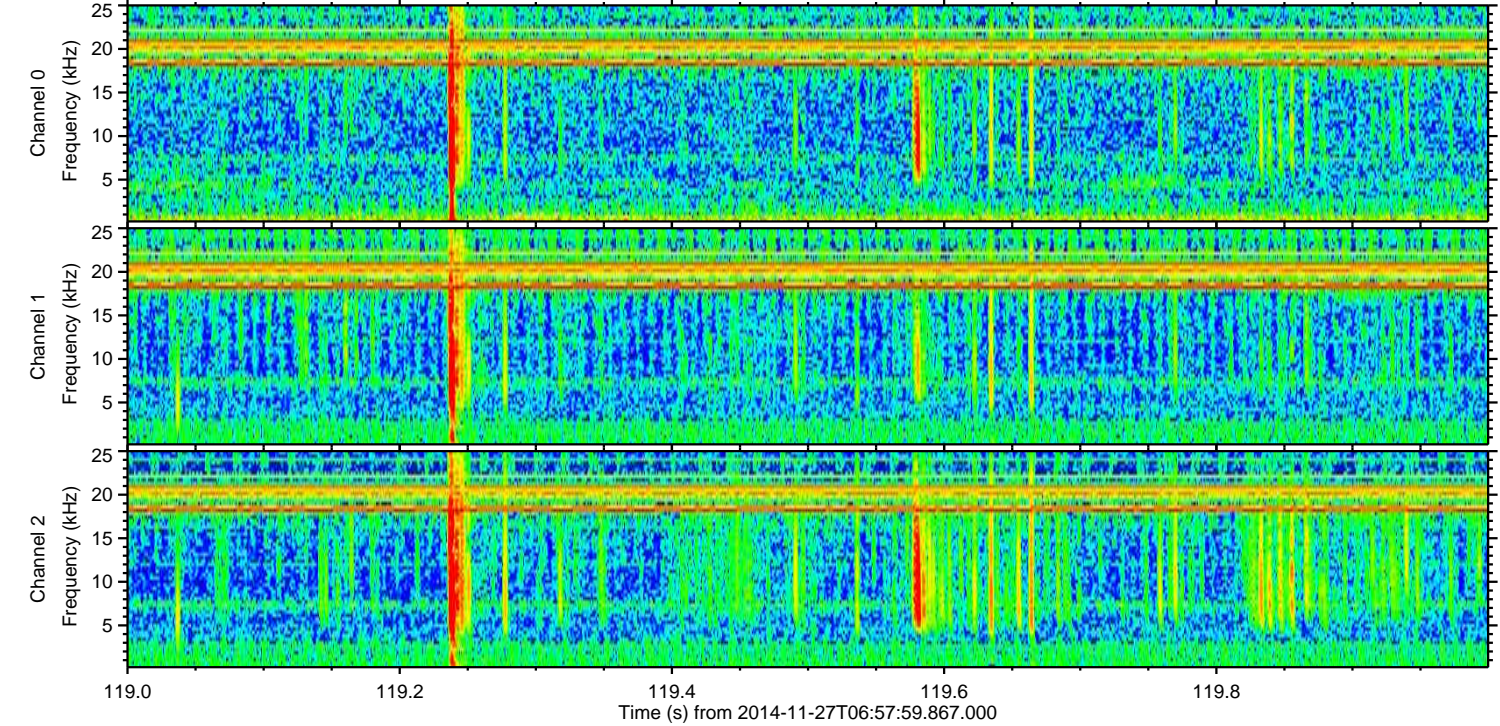
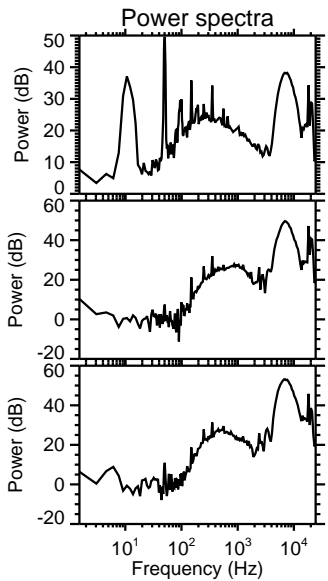
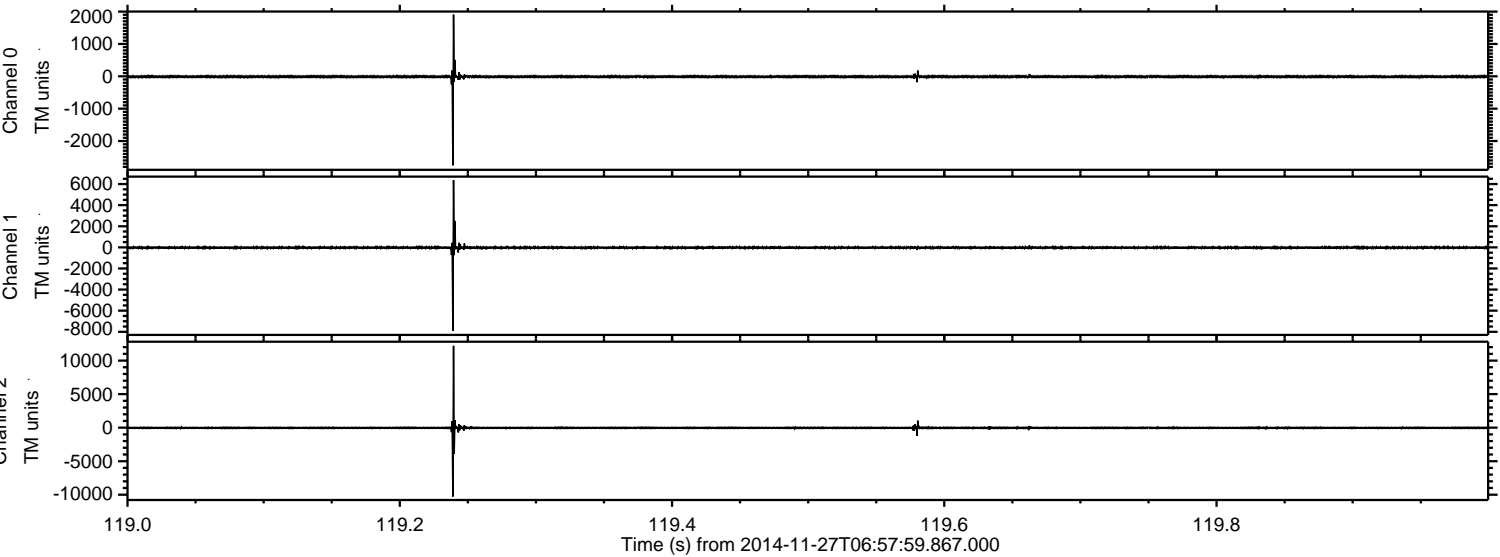
ELMAVAN 3D WAVEFORMS (Measured data sampled at 50 kHz) 49789 packets of 144 samples from 2014-11-27T06:57:59.867.000. Part 102/144

Processed Thu Nov 27 08:05:48 2014 by ELM ver.2012-10-06 from 001__elm20141127_065758__dat00.bin

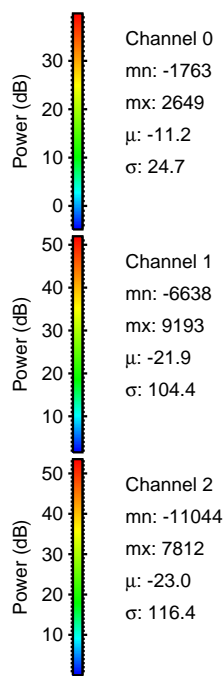
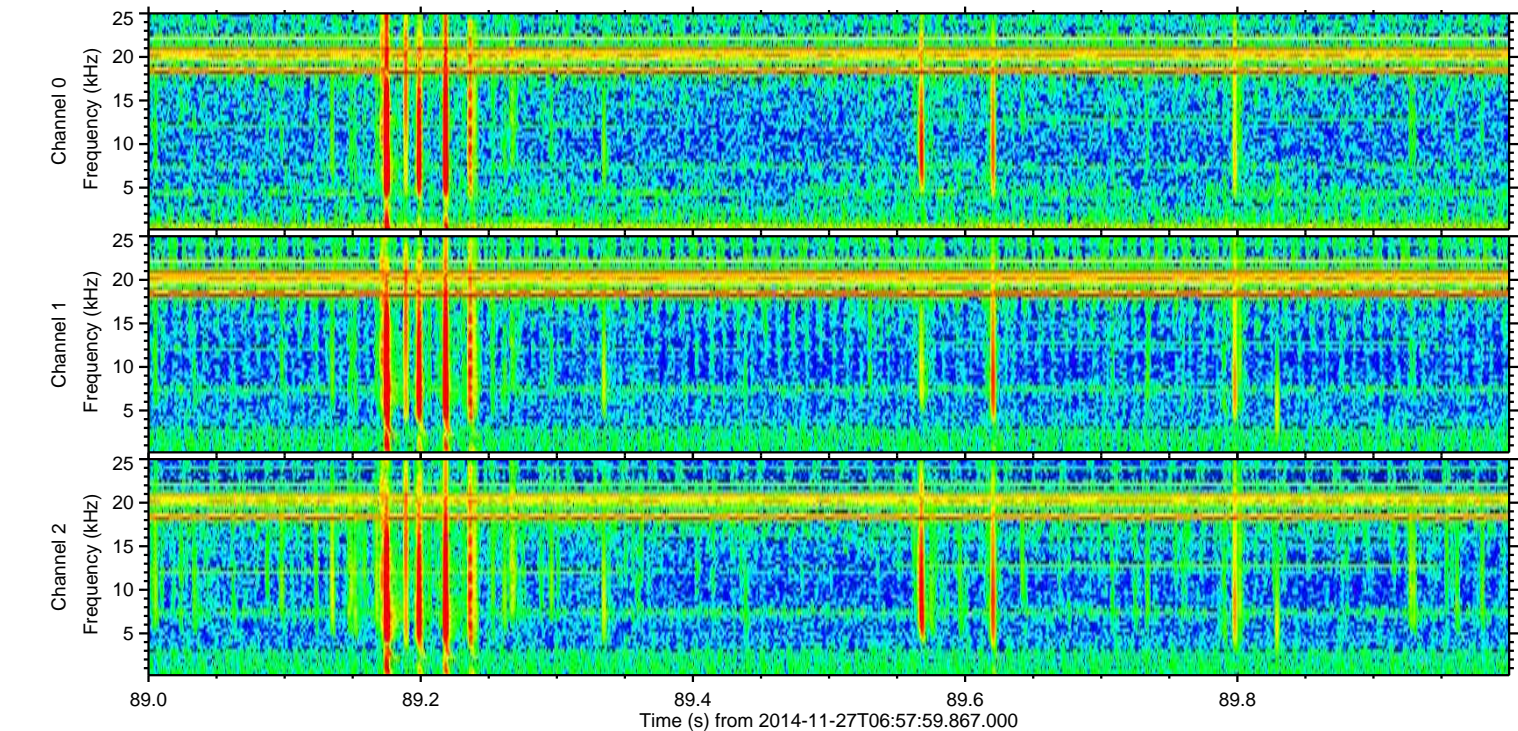
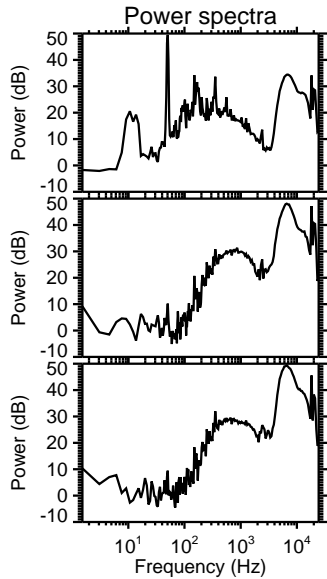
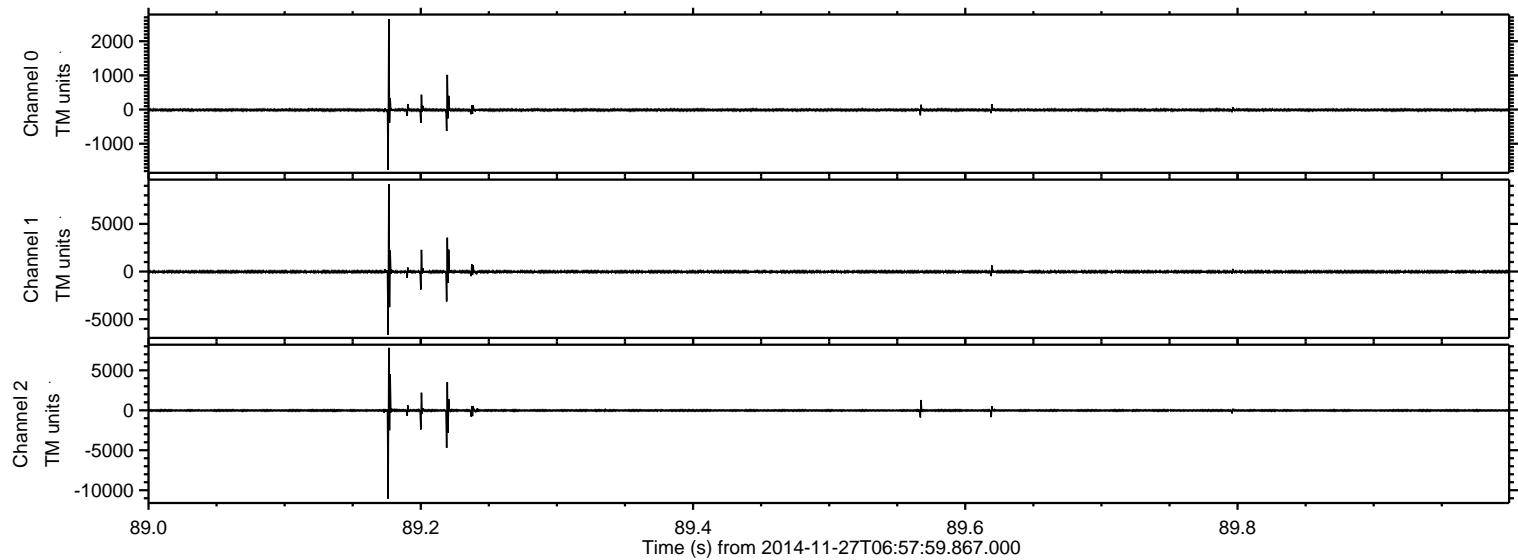


ELMAVAN 3D WAVEFORMS (Measured data sampled at 50 kHz) 49789 packets of 144 samples from 2014-11-27T06:57:59.867.000. Part 120/144

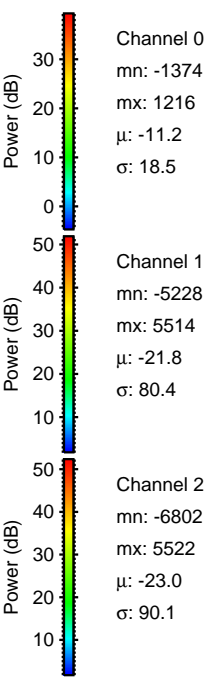
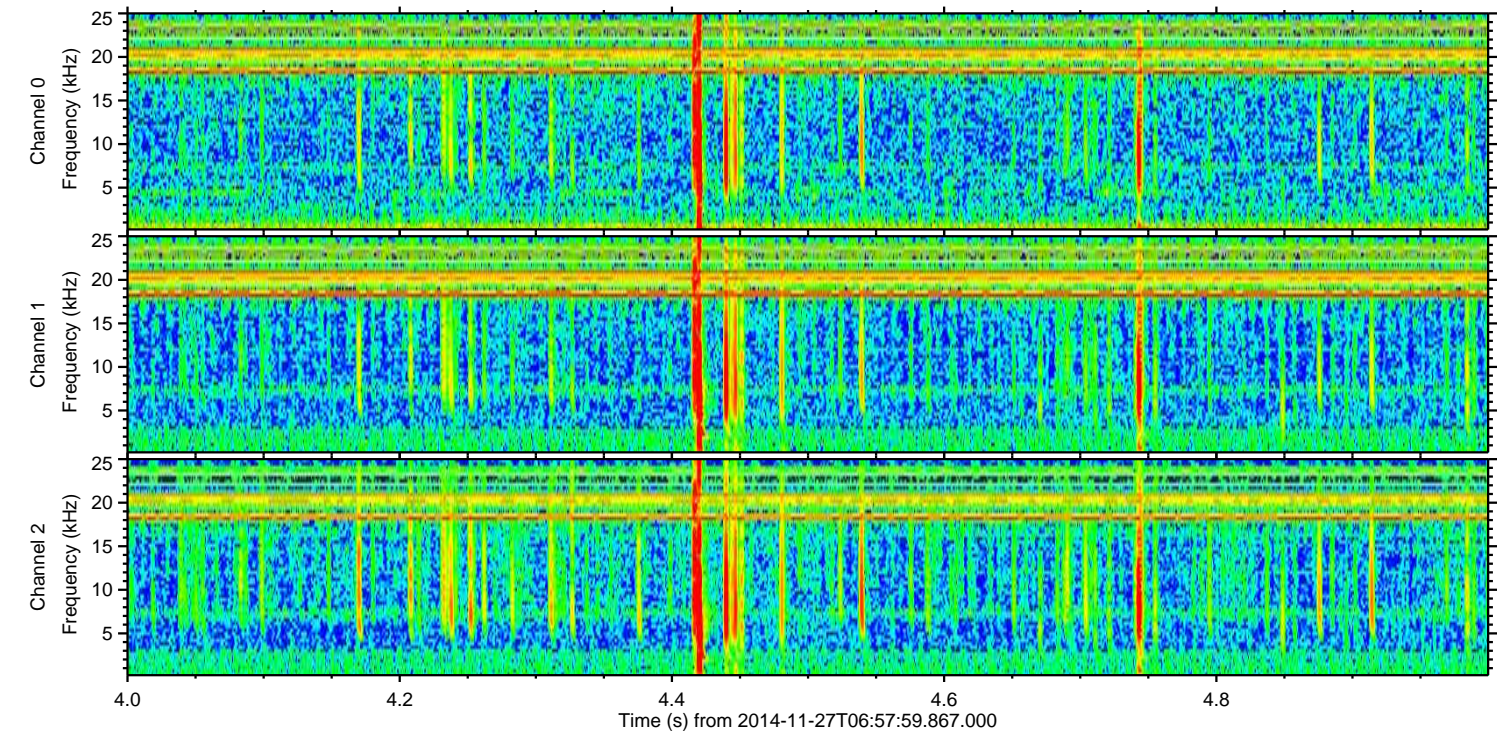
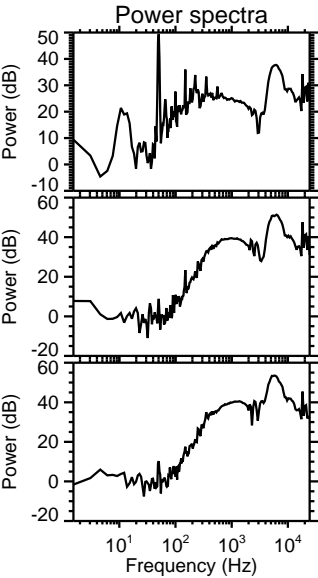
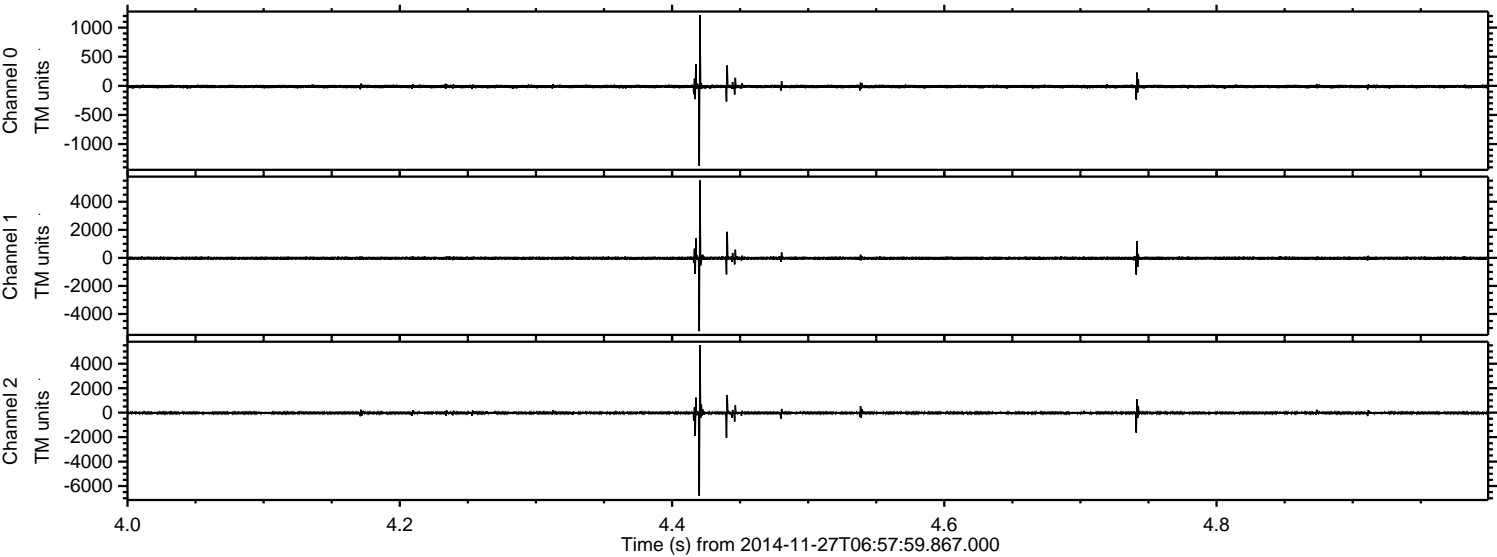
Processed Thu Nov 27 08:05:50 2014 by ELM ver.2012-10-06 from 001__elm20141127_065758__dat00.bin



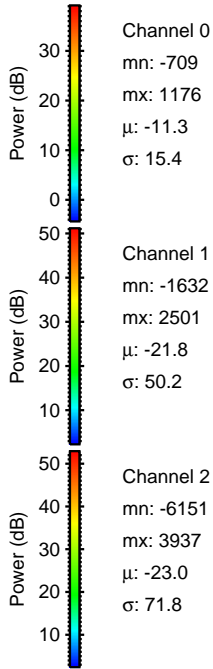
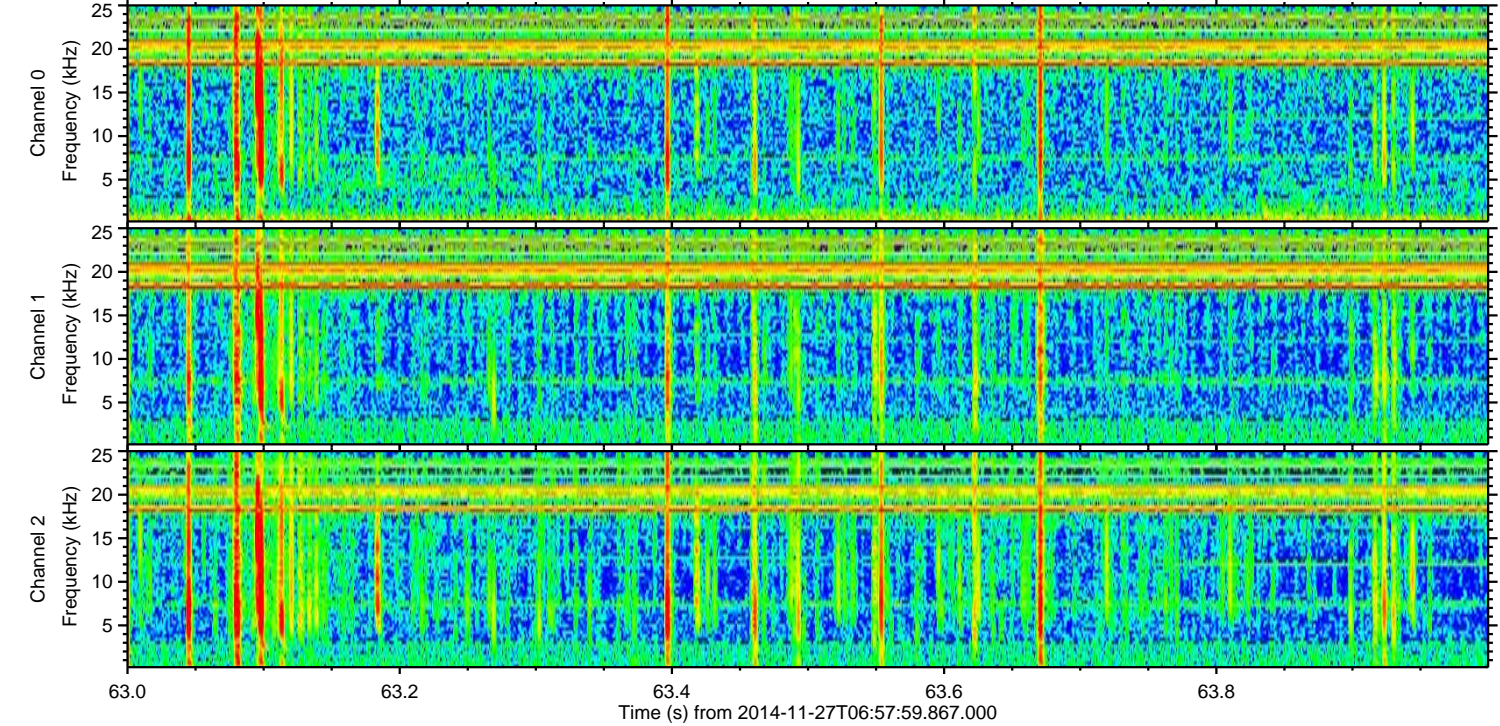
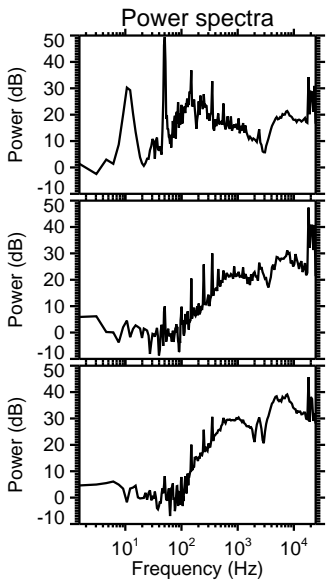
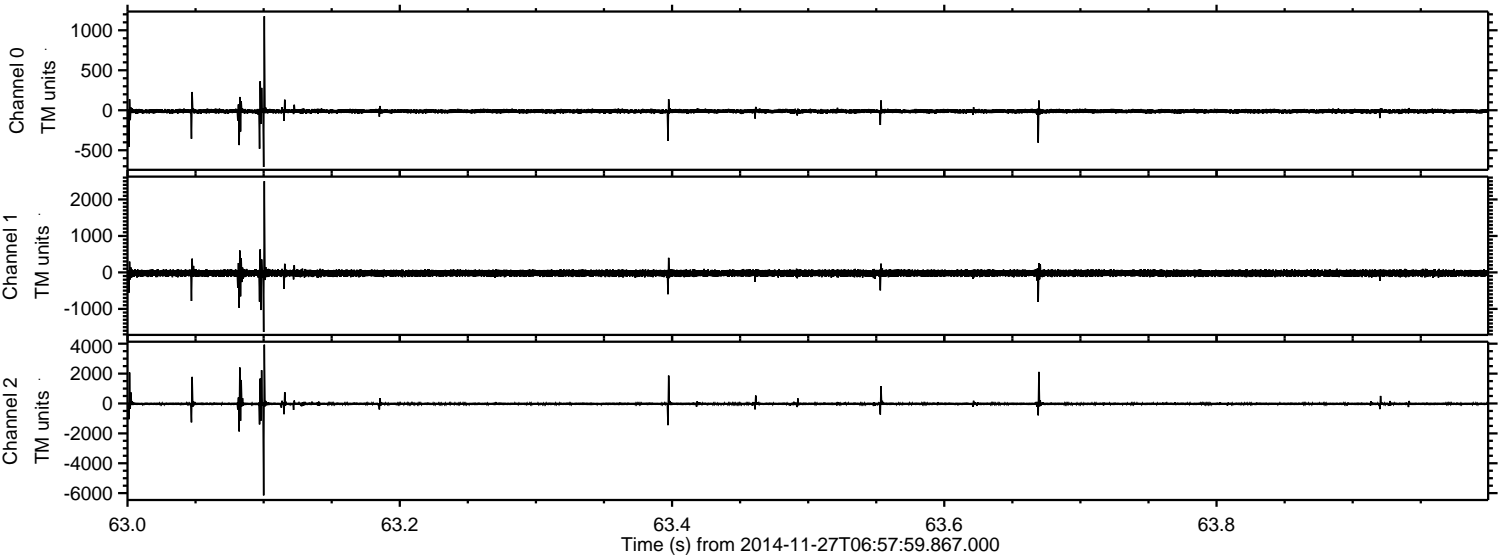
Processed Thu Nov 27 08:05:52 2014 by ELM ver.2012-10-06 from 001__elm20141127_065758__dat00.bin



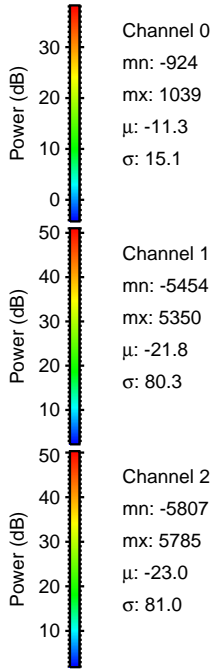
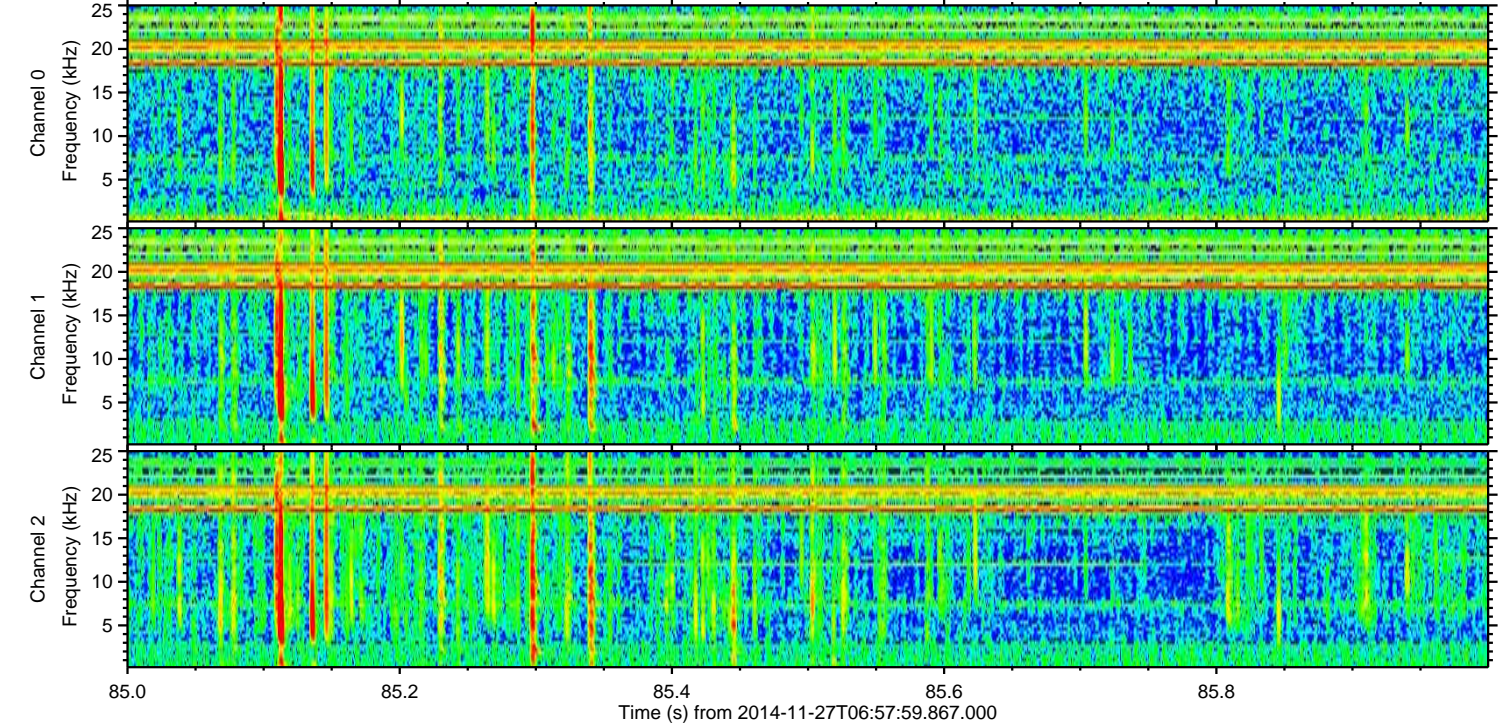
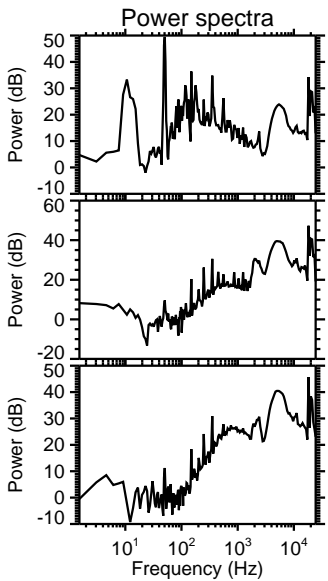
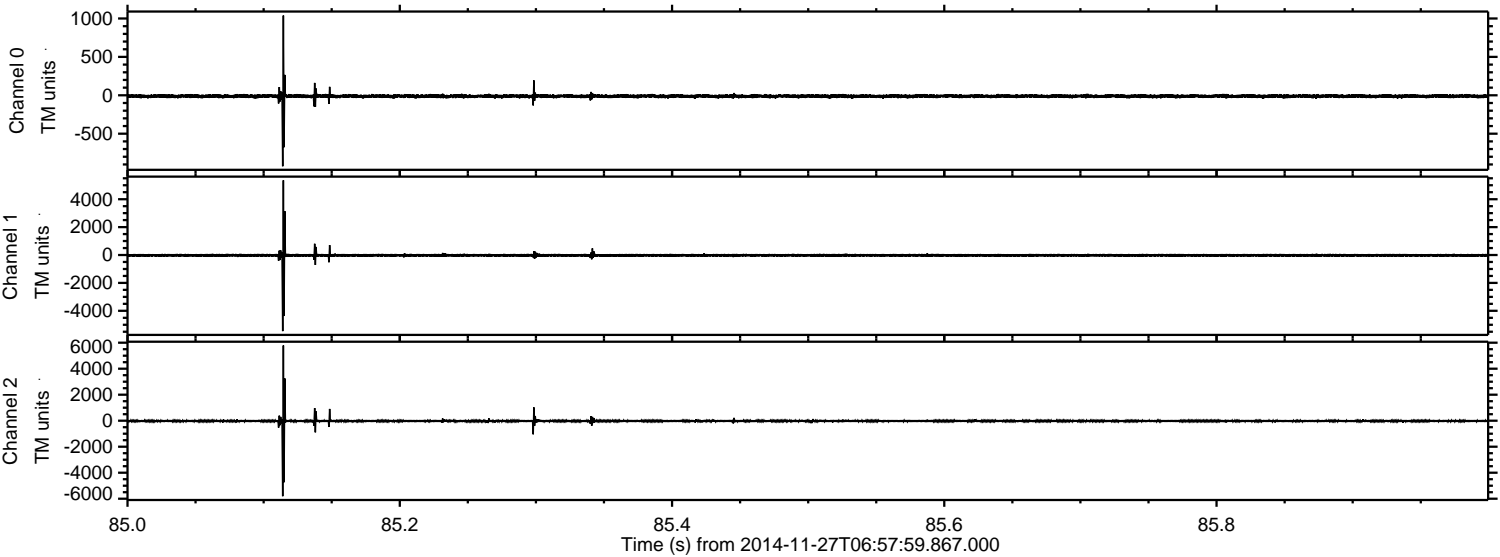
Processed Thu Nov 27 08:05:53 2014 by ELM ver.2012-10-06 from 001__elm20141127_065758__dat00.bin



Processed Thu Nov 27 08:05:54 2014 by ELM ver.2012-10-06 from 001__elm20141127_065758__dat00.bin



Processed Thu Nov 27 08:05:55 2014 by ELM ver.2012-10-06 from 001__elm20141127_065758__dat00.bin



Channel 0
mn: -924
mx: 1039
 μ : -11.3
 σ : 15.1

Channel 1
mn: -5454
mx: 5350
 μ : -21.8
 σ : 80.3

Channel 2
mn: -5807
mx: 5785
 μ : -23.0
 σ : 81.0

Processed Thu Nov 27 08:05:56 2014 by ELM ver.2012-10-06 from 001__elm20141127_065758__dat00.bin

