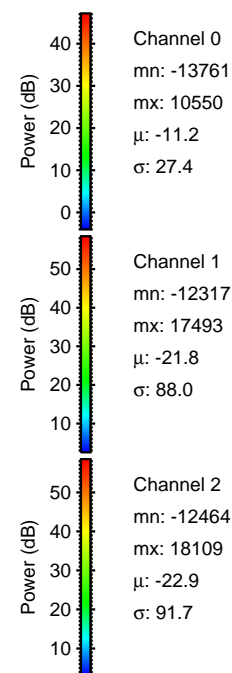
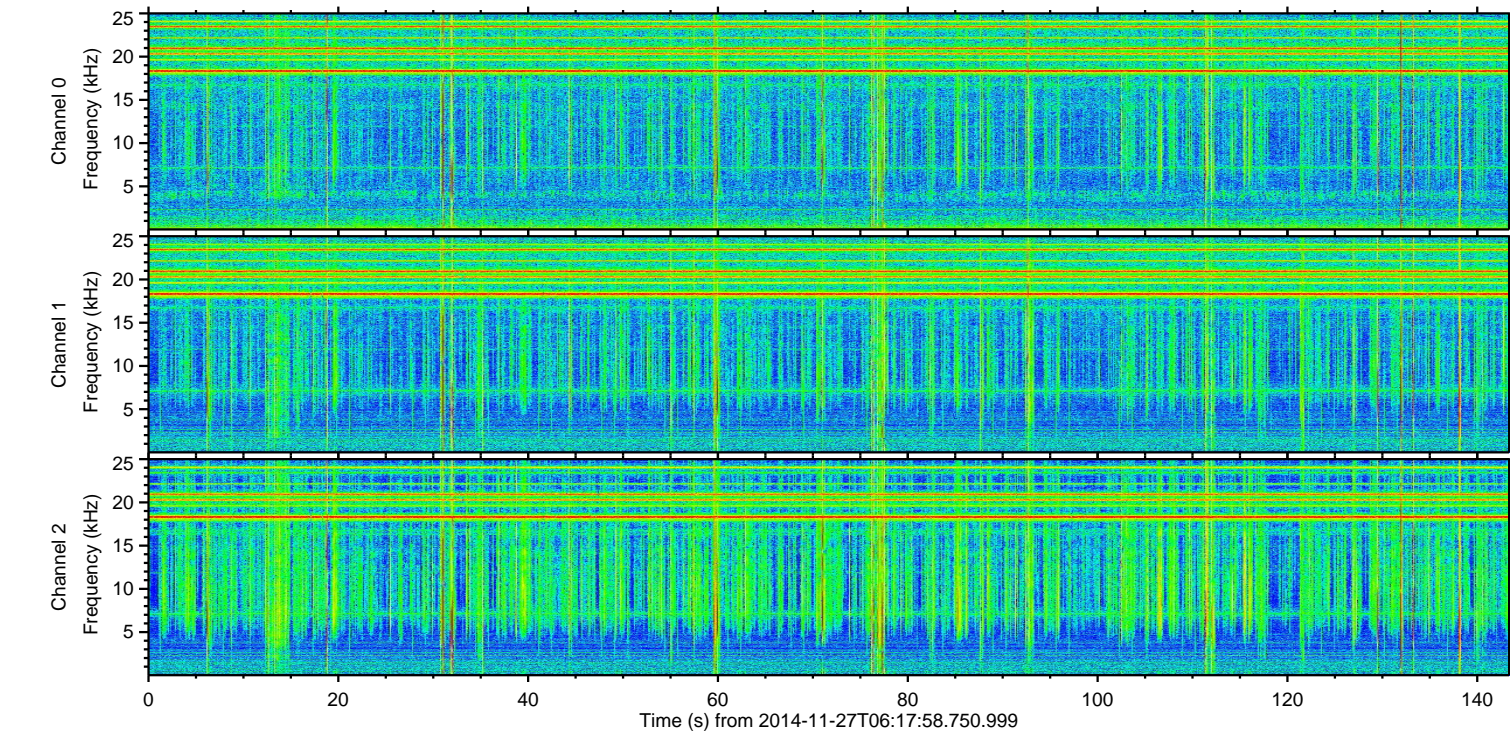
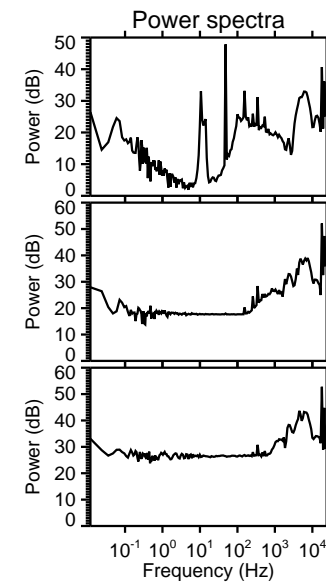
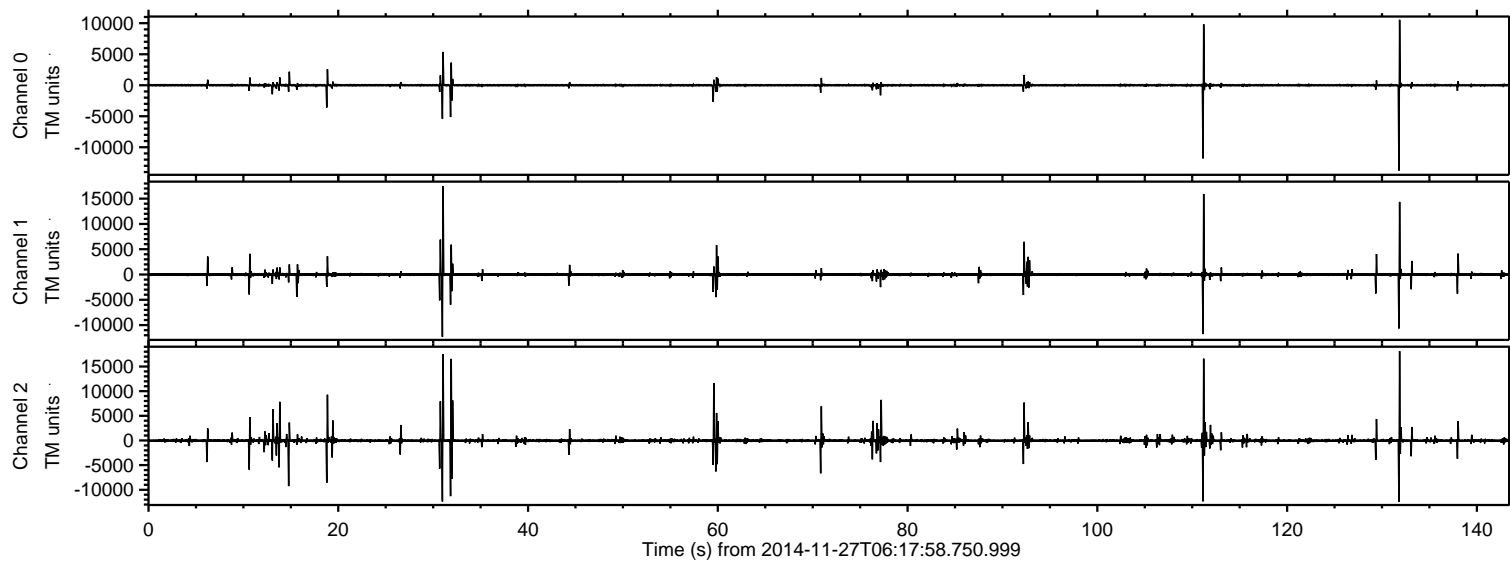


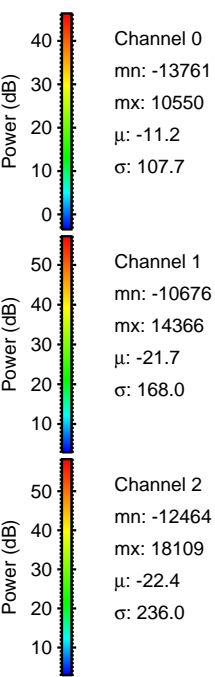
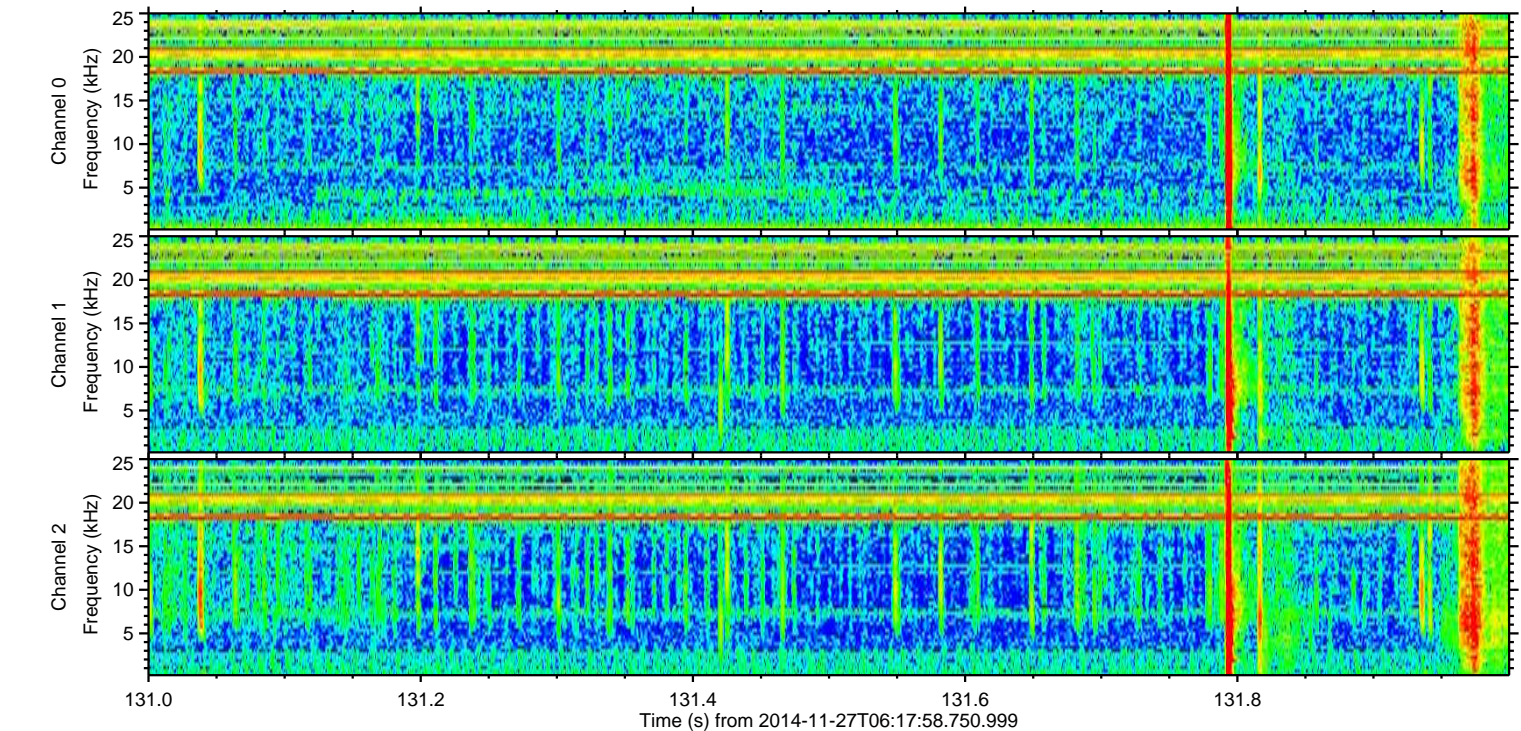
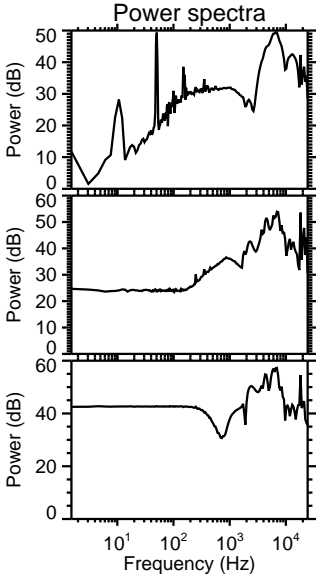
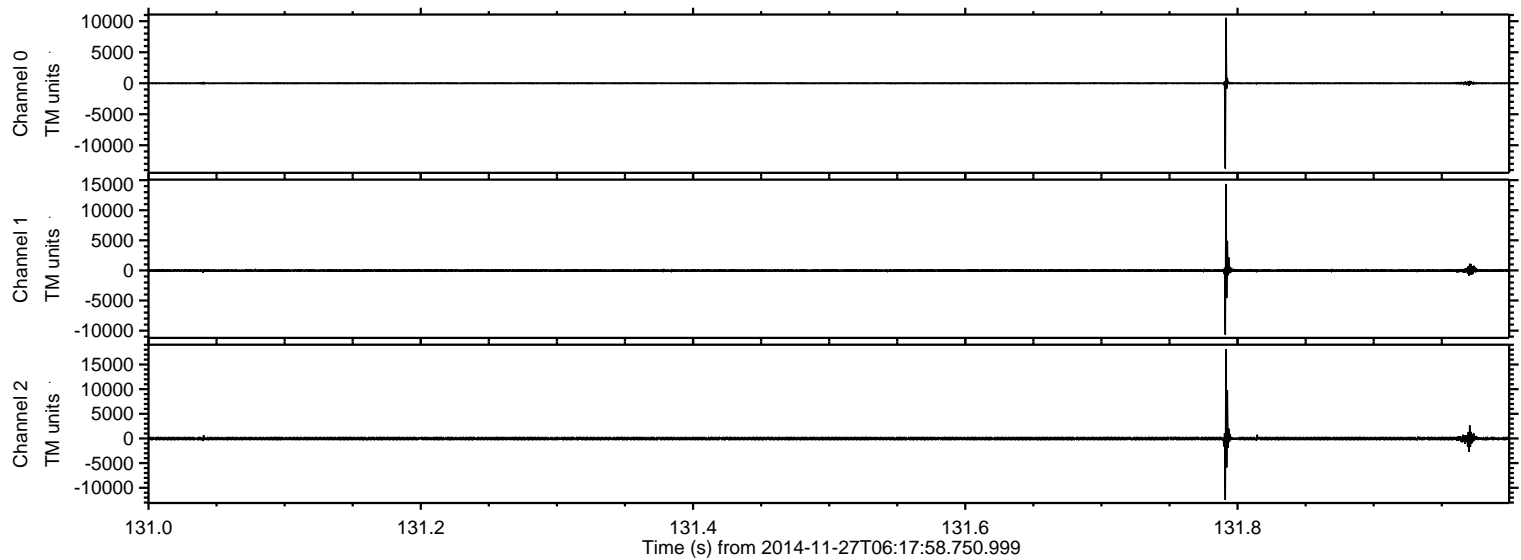
ELMAVAN 3D WAVEFORMS (Measured data sampled at 50 kHz) 49792 packets of 144 samples from 2014-11-27T06:17:58.750.999.

Processed Thu Nov 27 07:25:14 2014 by ELM ver.2012-10-06 from 001__elm20141127_061757__dat00.bin



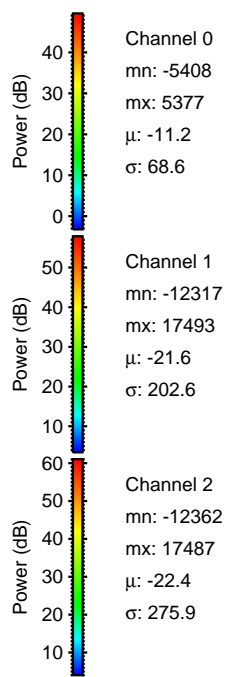
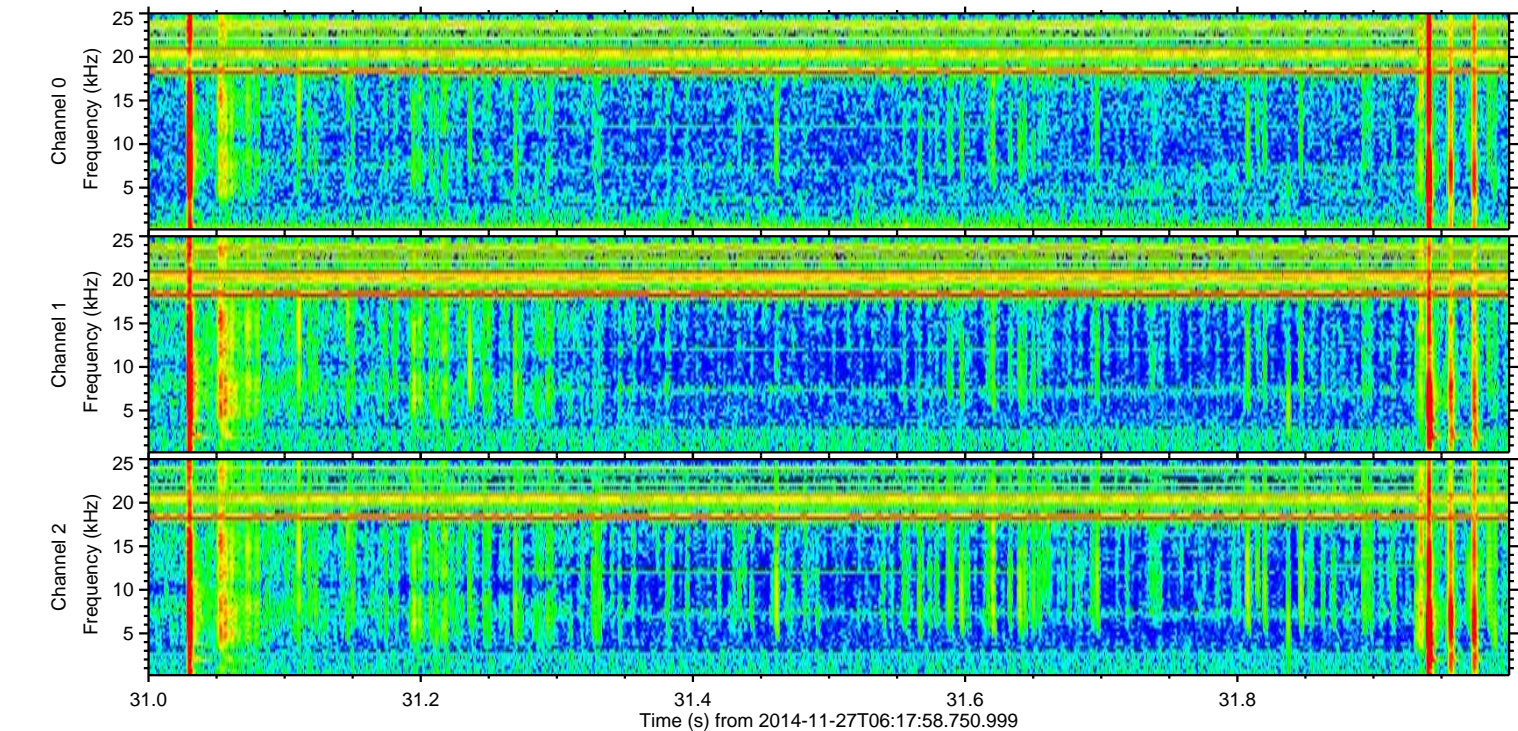
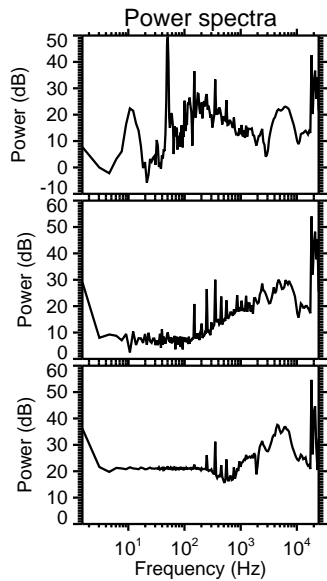
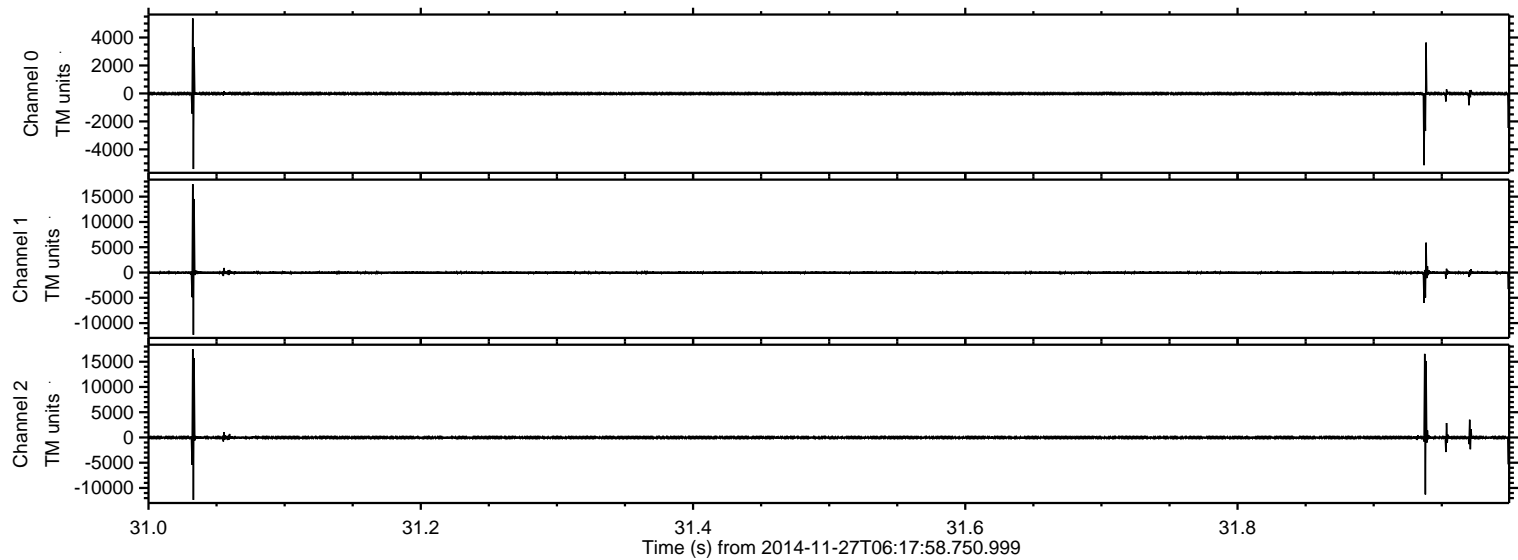
ELMAVAN 3D WAVEFORMS (Measured data sampled at 50 kHz) 49792 packets of 144 samples from 2014-11-27T06:17:58.750.999. Part 132/144

Processed Thu Nov 27 07:25:29 2014 by ELM ver.2012-10-06 from 001__elm20141127_061757__dat00.bin



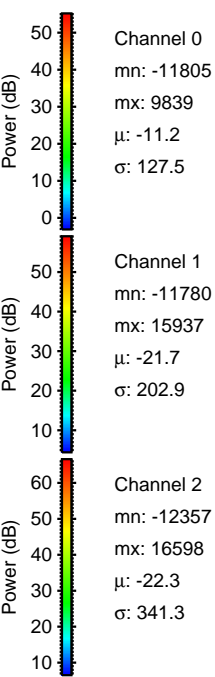
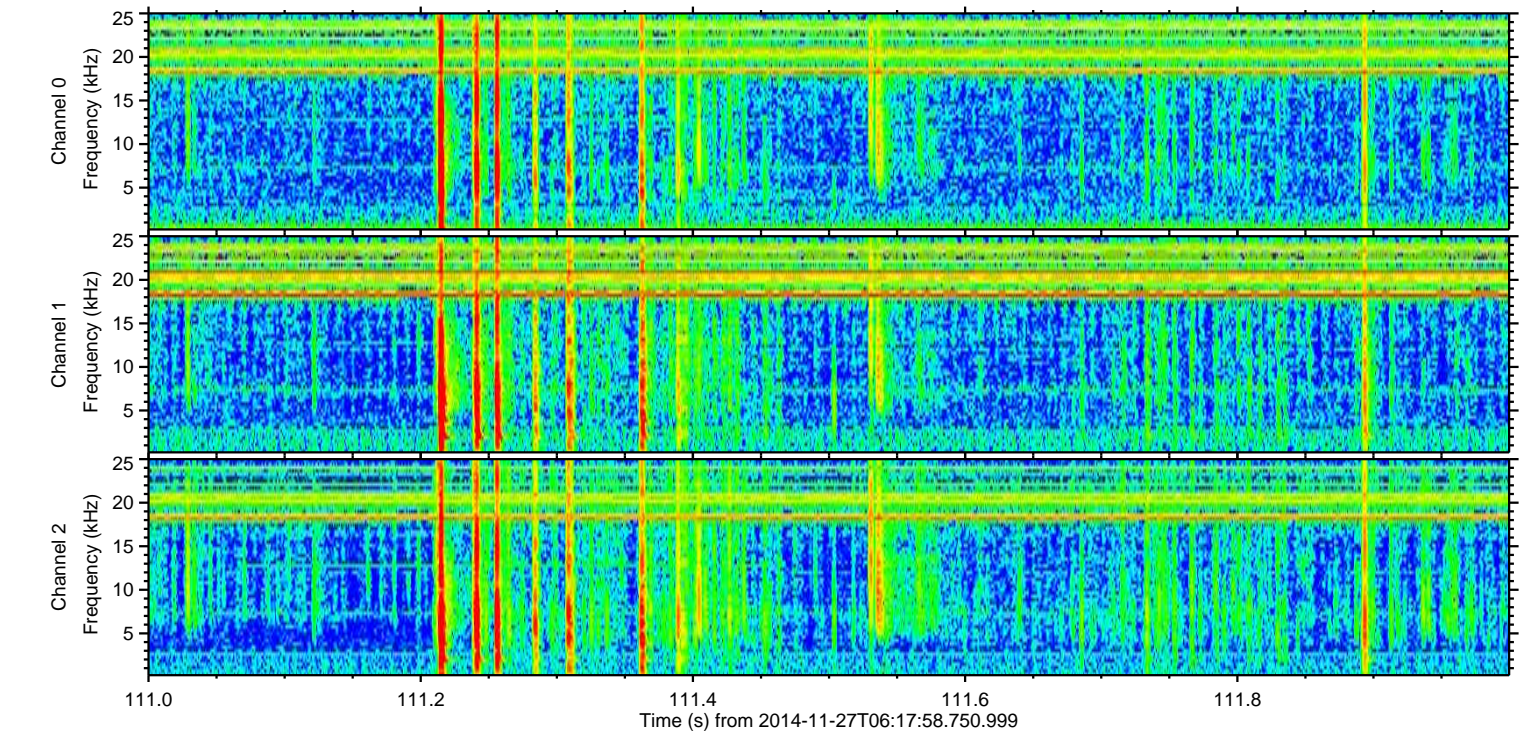
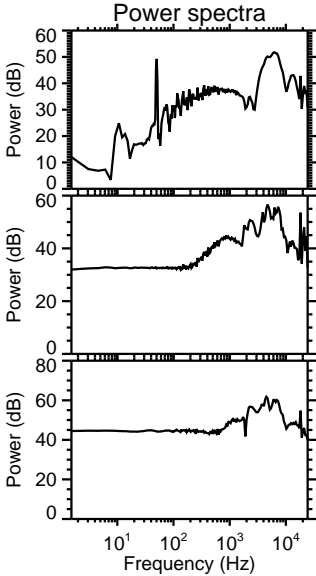
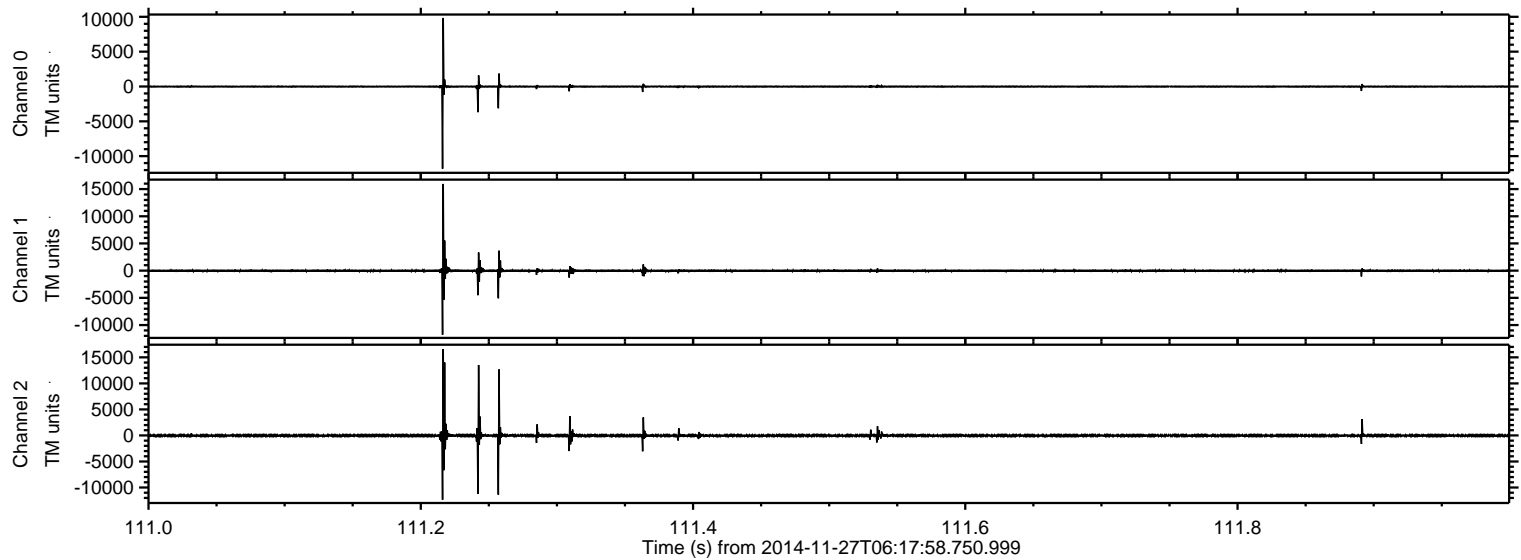
ELMAVAN 3D WAVEFORMS (Measured data sampled at 50 kHz) 49792 packets of 144 samples from 2014-11-27T06:17:58.750.999. Part 32/144

Processed Thu Nov 27 07:25:30 2014 by ELM ver.2012-10-06 from 001__elm20141127_061757__dat00.bin



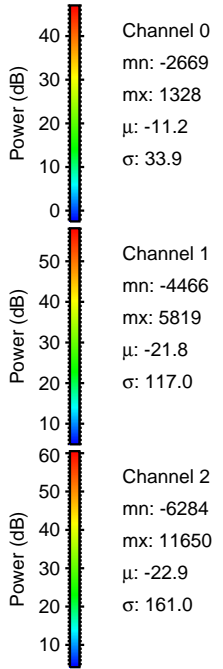
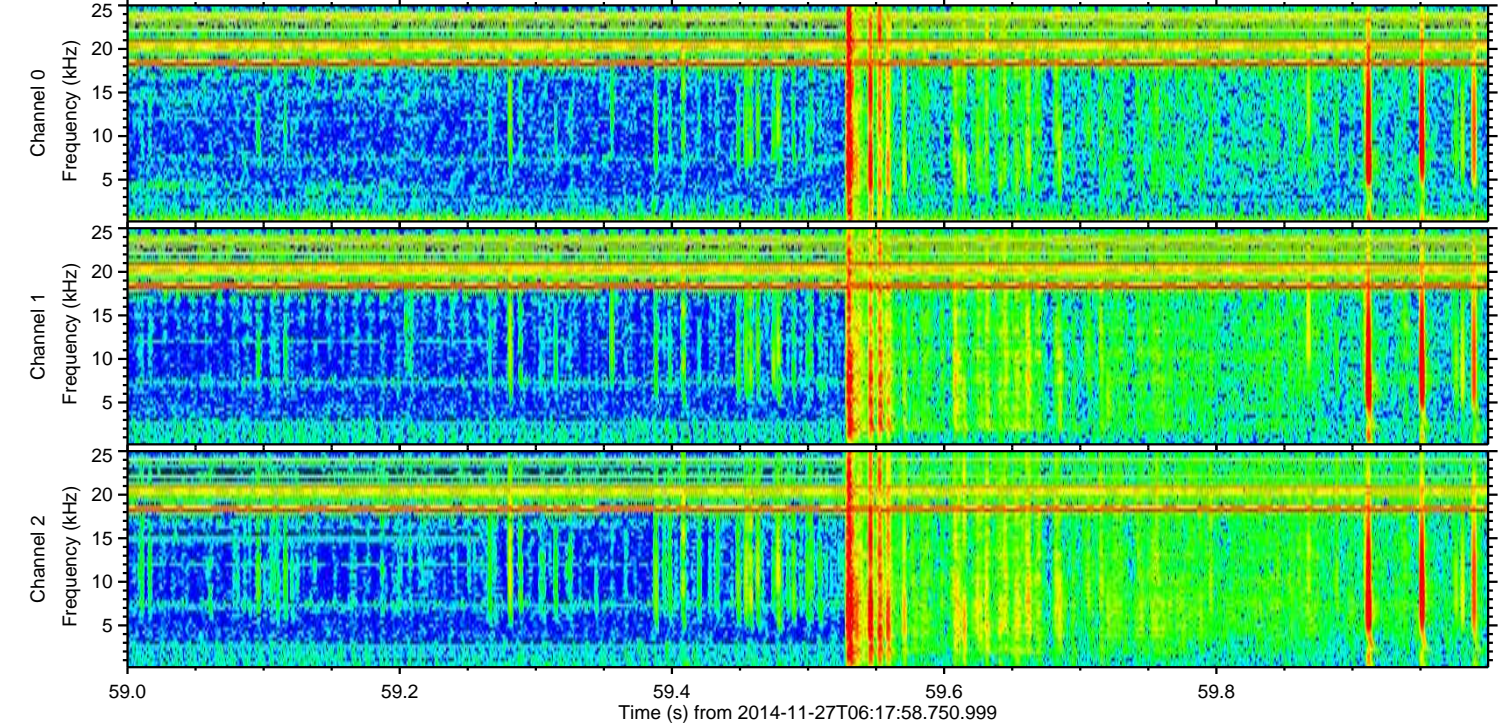
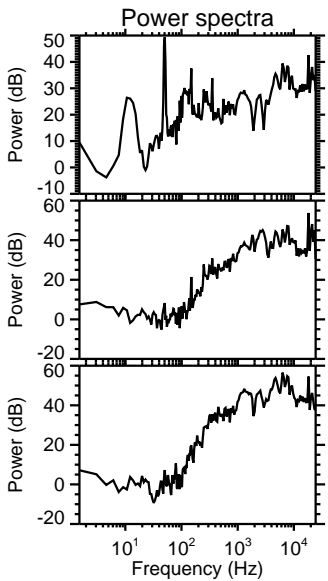
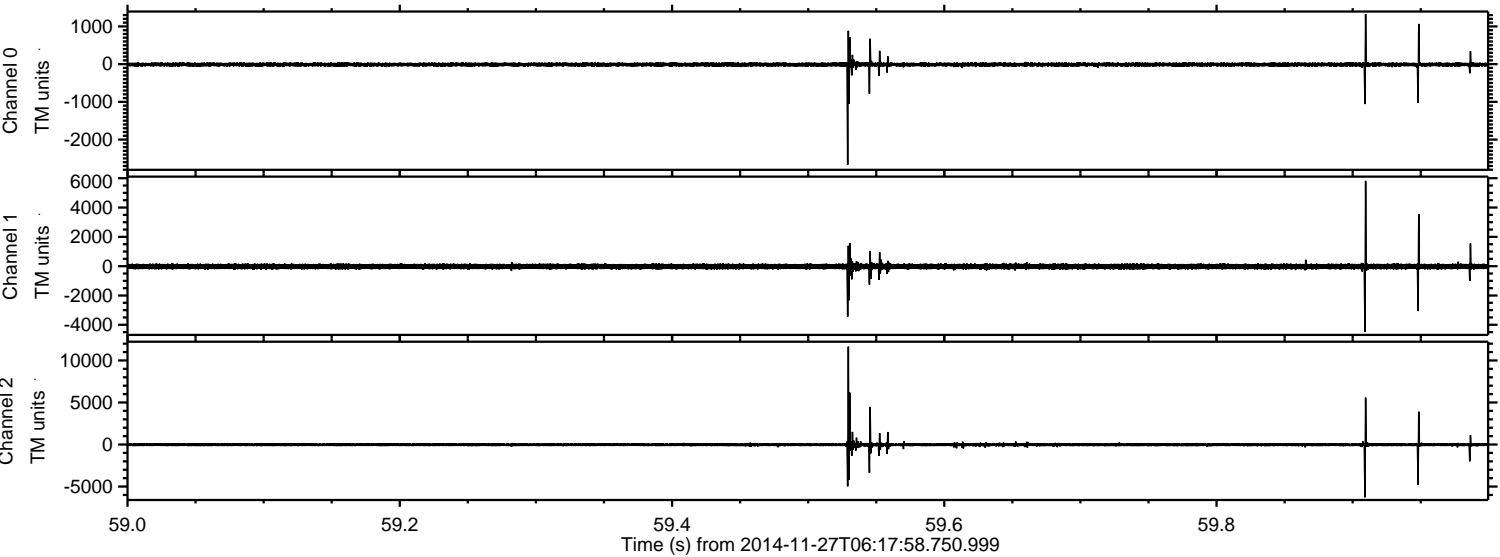
ELMAVAN 3D WAVEFORMS (Measured data sampled at 50 kHz) 49792 packets of 144 samples from 2014-11-27T06:17:58.750.999. Part 112/144

Processed Thu Nov 27 07:25:31 2014 by ELM ver.2012-10-06 from 001__elm20141127_061757__dat00.bin



ELMAVAN 3D WAVEFORMS (Measured data sampled at 50 kHz) 49792 packets of 144 samples from 2014-11-27T06:17:58.750.999. Part 60/144

Processed Thu Nov 27 07:25:32 2014 by ELM ver.2012-10-06 from 001__elm20141127_061757__dat00.bin

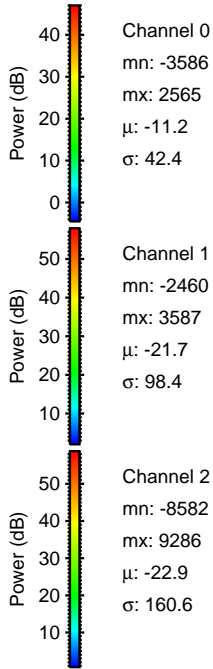
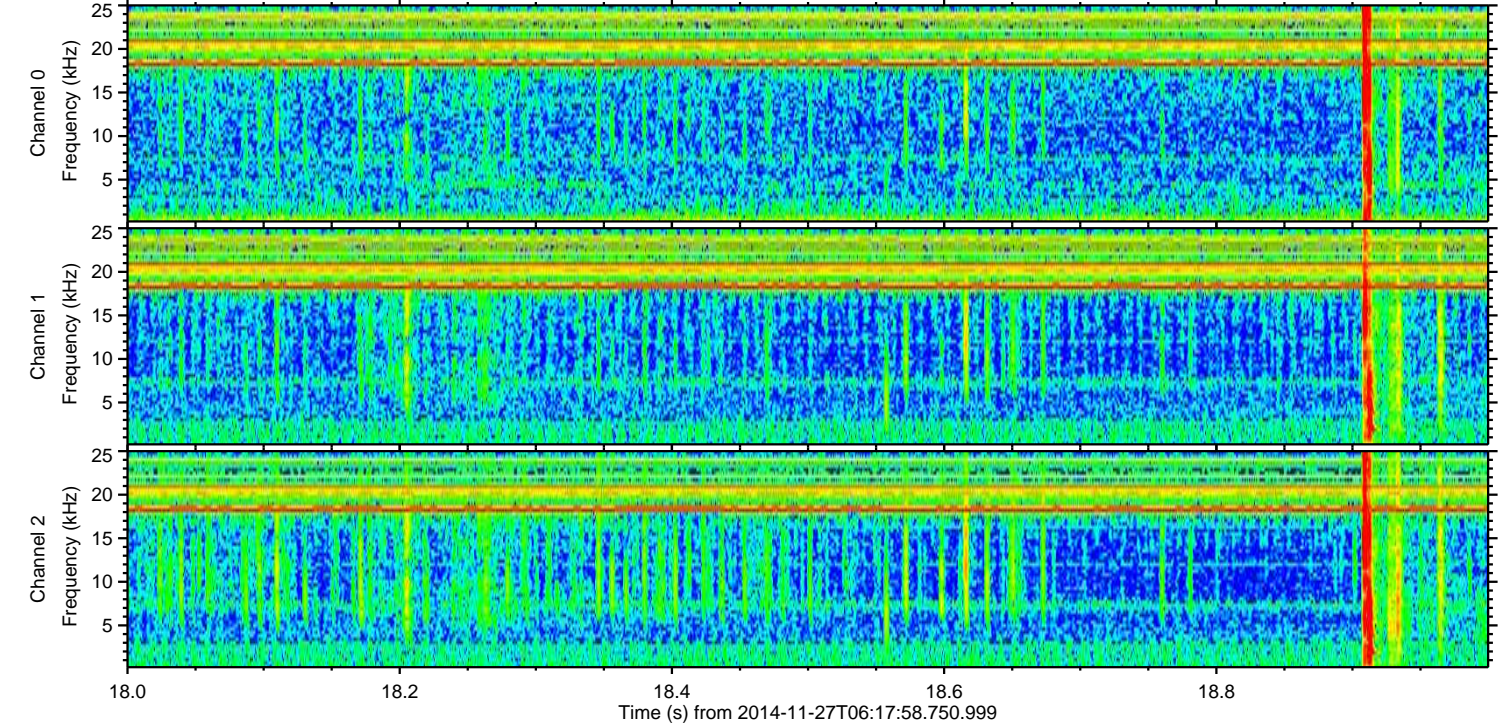
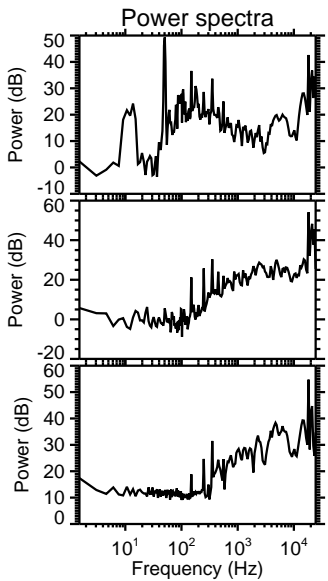
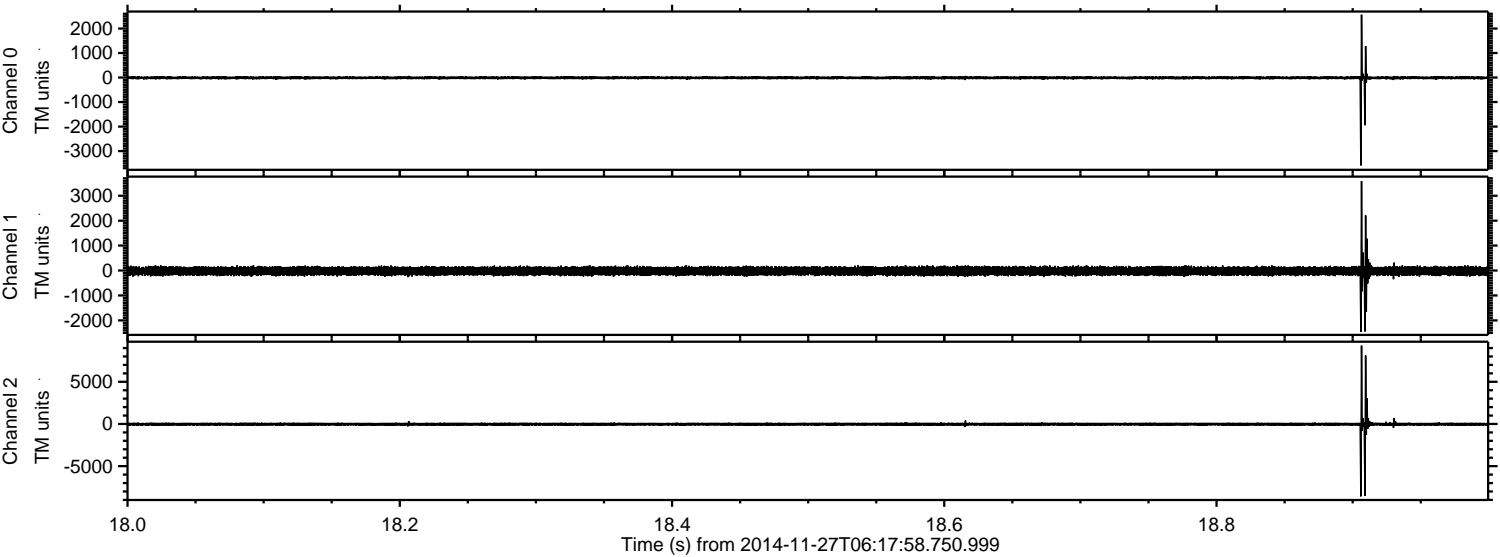


Channel 0
mn: -2669
mx: 1328
 μ : -11.2
 σ : 33.9

Channel 1
mn: -4466
mx: 5819
 μ : -21.8
 σ : 117.0

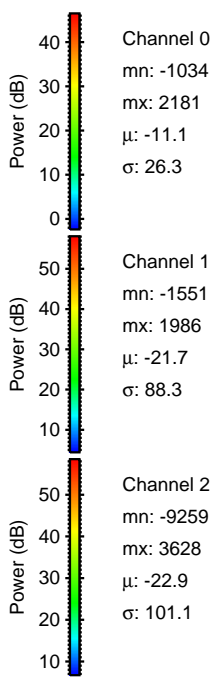
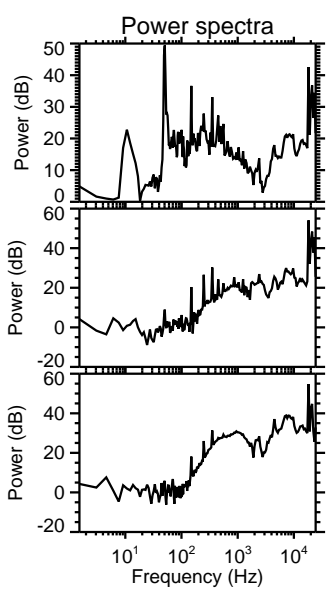
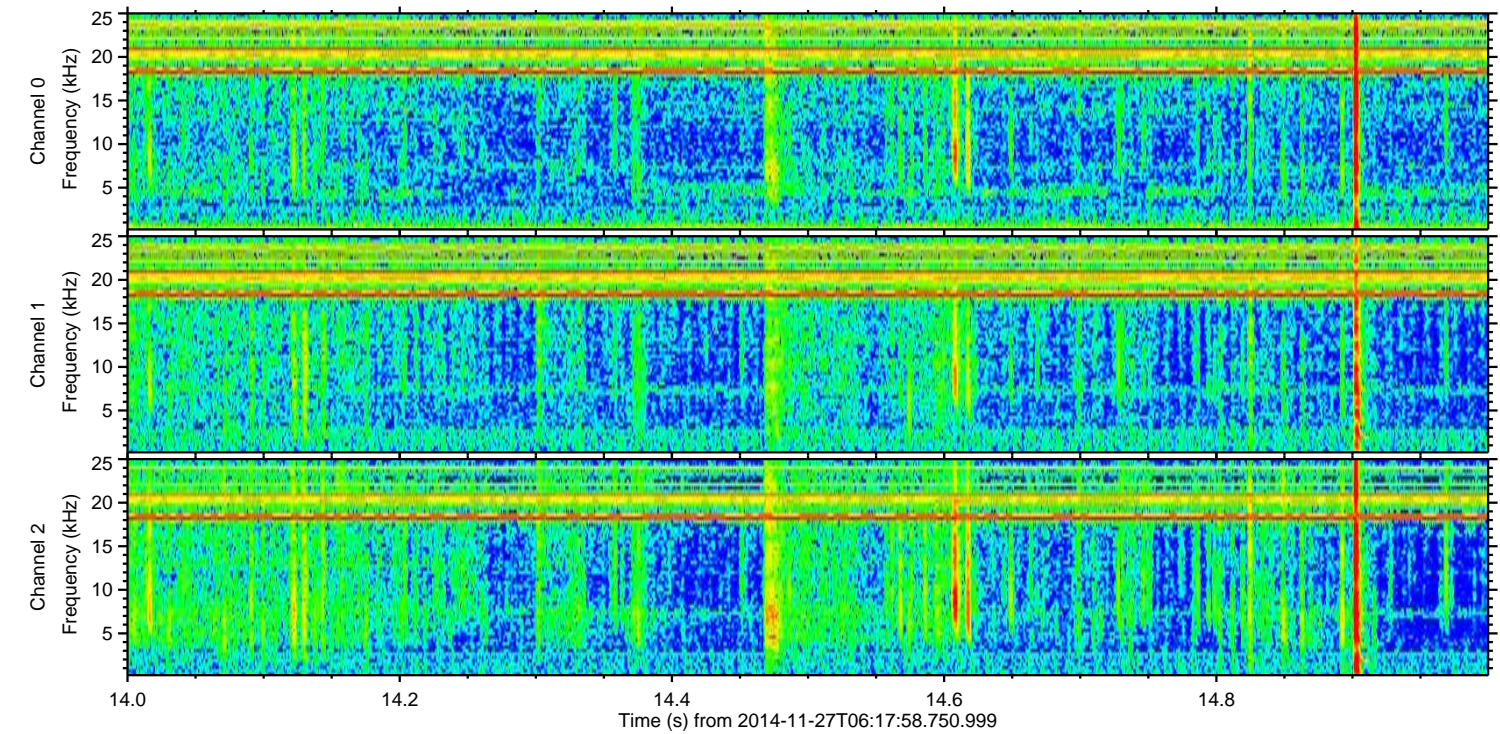
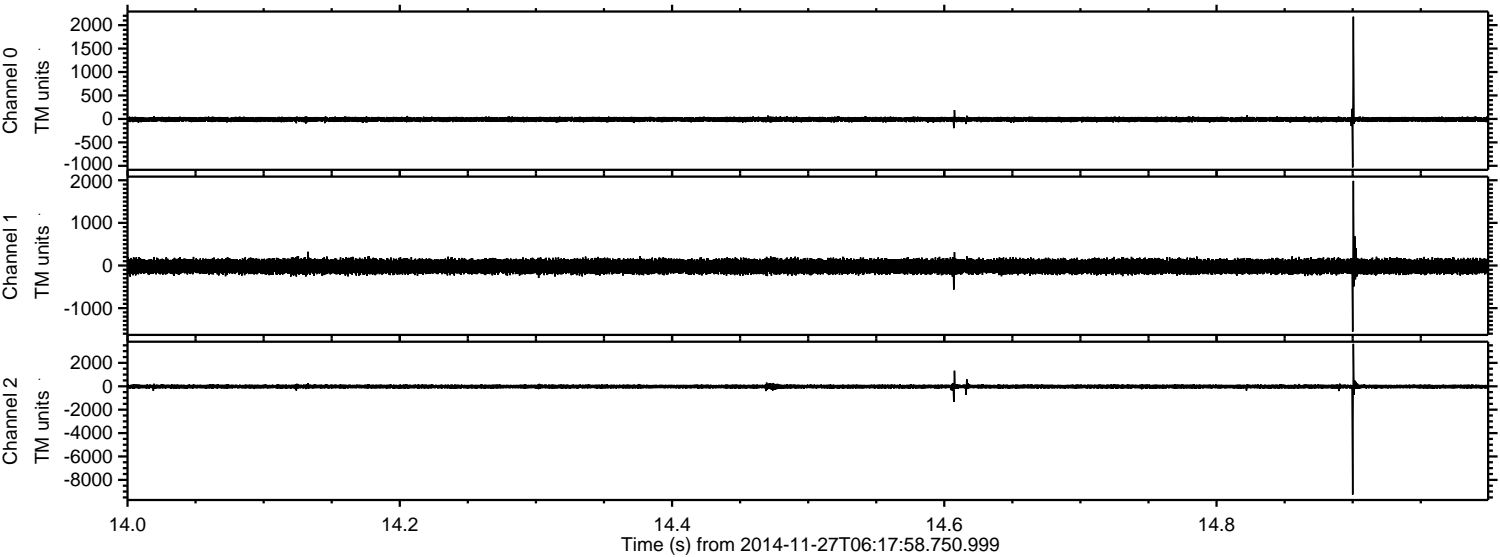
Channel 2
mn: -6284
mx: 11650
 μ : -22.9
 σ : 161.0

Processed Thu Nov 27 07:25:33 2014 by ELM ver.2012-10-06 from 001__elm20141127_061757__dat00.bin



ELMAVAN 3D WAVEFORMS (Measured data sampled at 50 kHz) 49792 packets of 144 samples from 2014-11-27T06:17:58.750.999. Part 15/144

Processed Thu Nov 27 07:25:34 2014 by ELM ver.2012-10-06 from 001__elm20141127_061757__dat00.bin

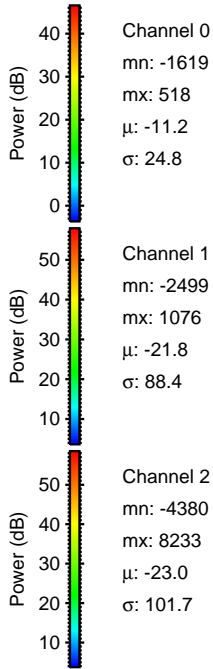
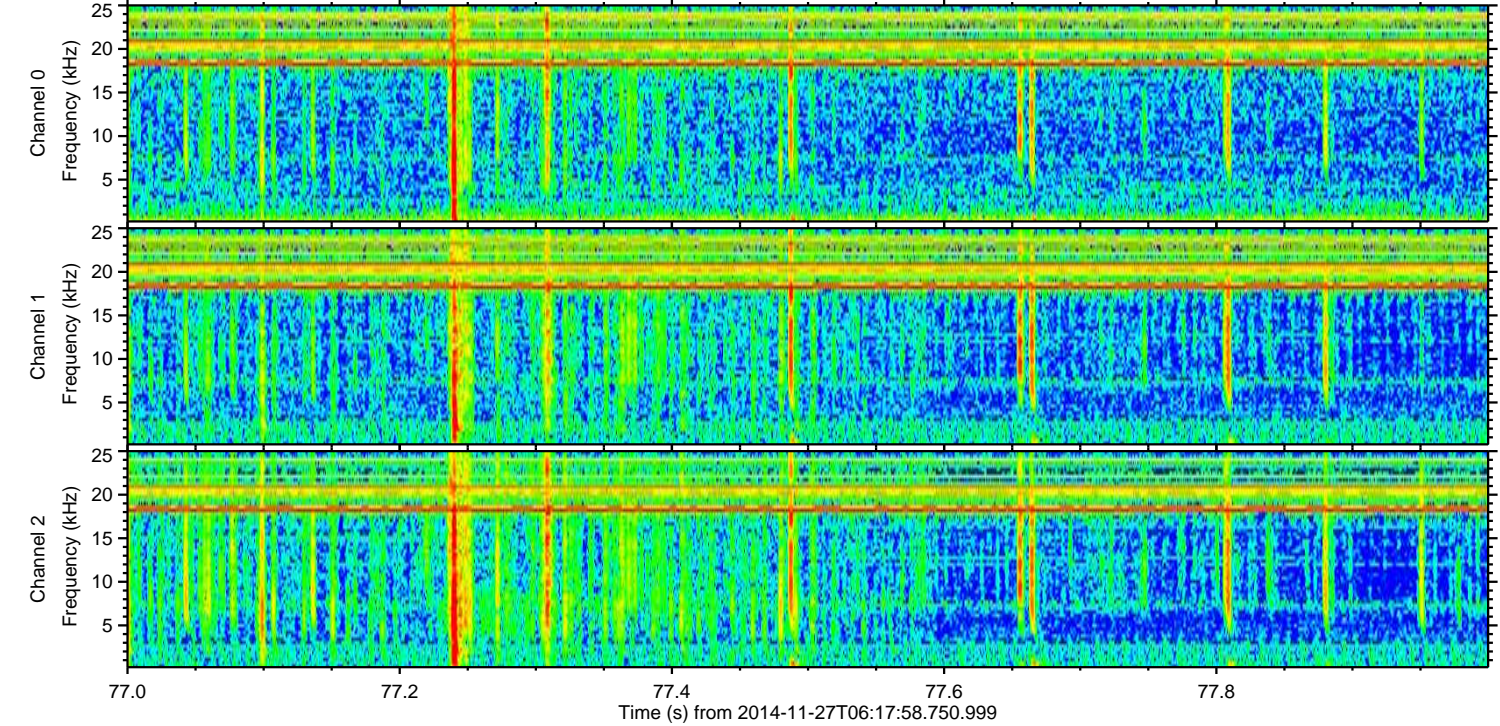
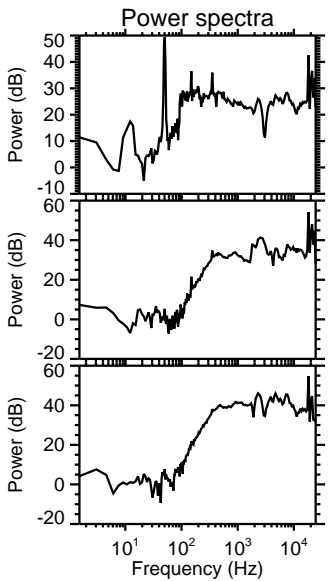
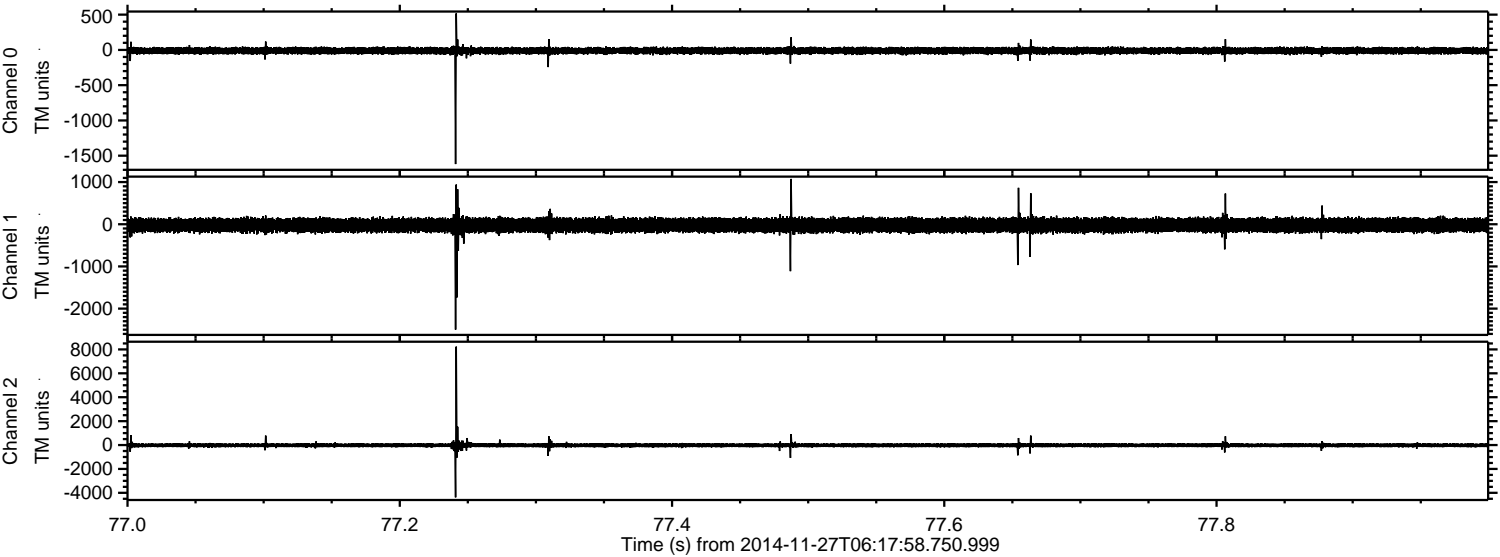


Channel 0
mn: -1034
mx: 2181
 μ : -11.1
 σ : 26.3

Channel 1
mn: -1551
mx: 1986
 μ : -21.7
 σ : 88.3

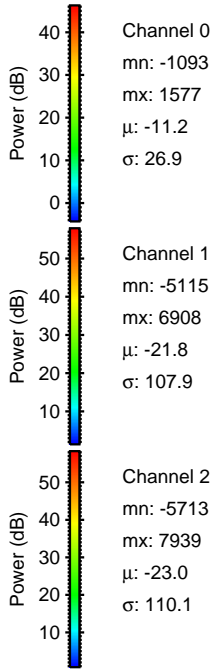
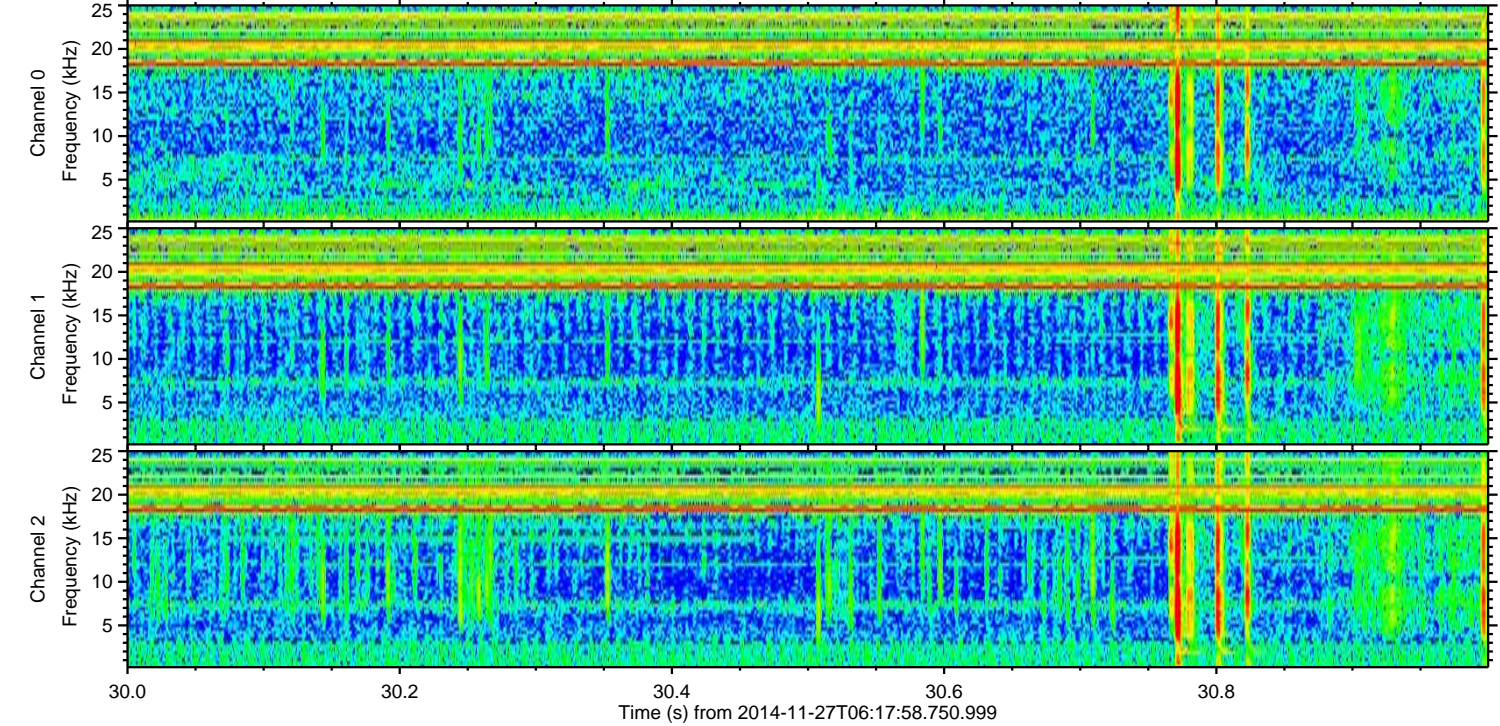
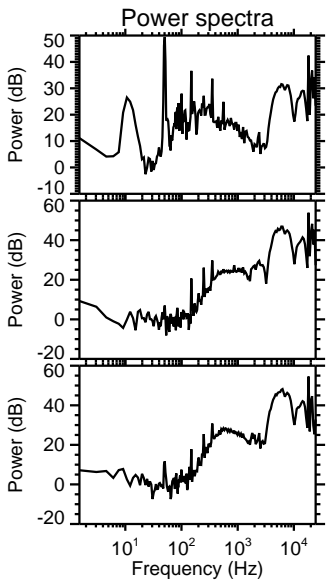
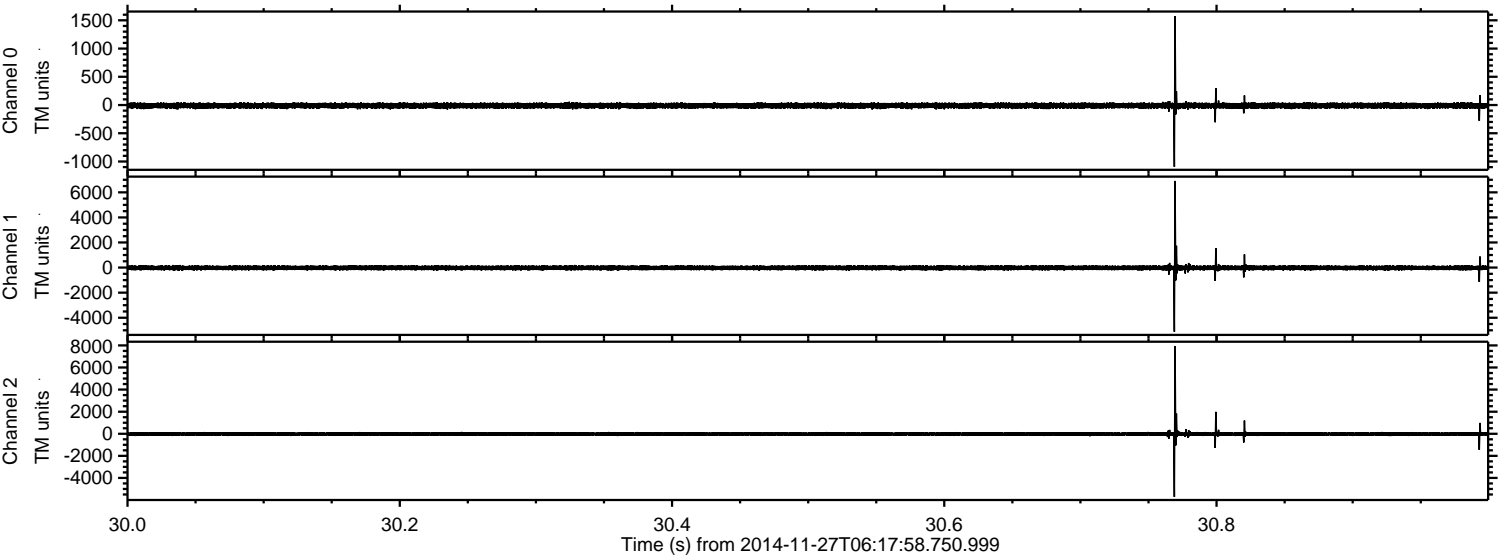
Channel 2
mn: -9259
mx: 3628
 μ : -22.9
 σ : 101.1

Processed Thu Nov 27 07:25:35 2014 by ELM ver.2012-10-06 from 001__elm20141127_061757__dat00.bin



ELMAVAN 3D WAVEFORMS (Measured data sampled at 50 kHz) 49792 packets of 144 samples from 2014-11-27T06:17:58.750.999. Part 31/144

Processed Thu Nov 27 07:25:36 2014 by ELM ver.2012-10-06 from 001__elm20141127_061757__dat00.bin



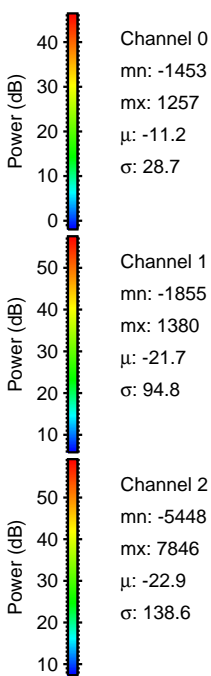
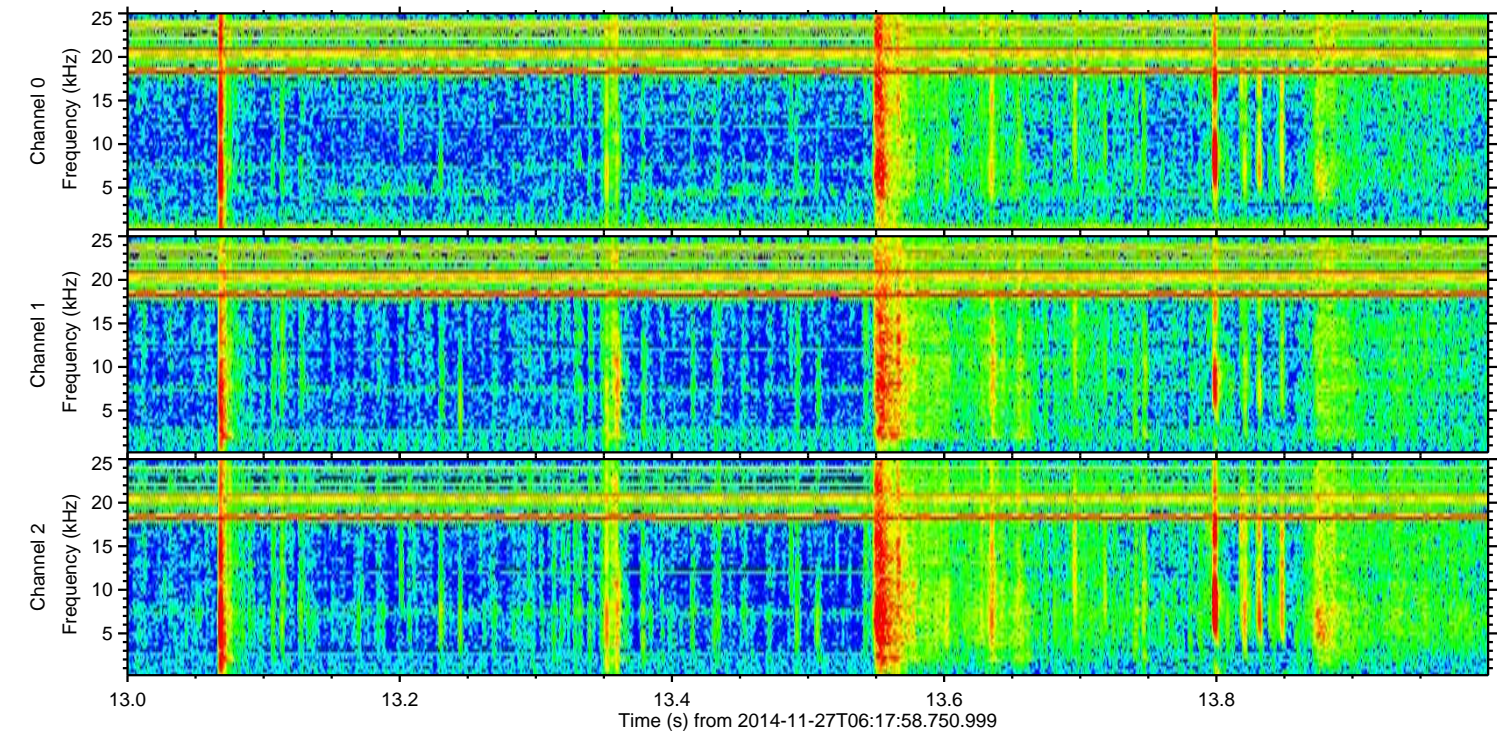
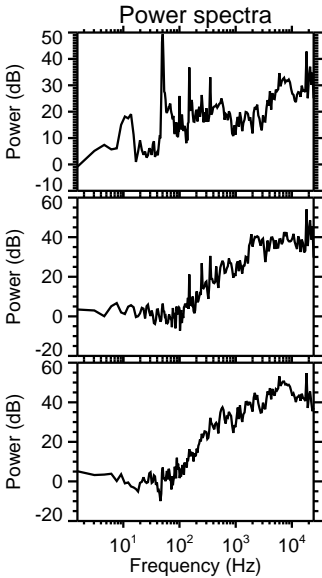
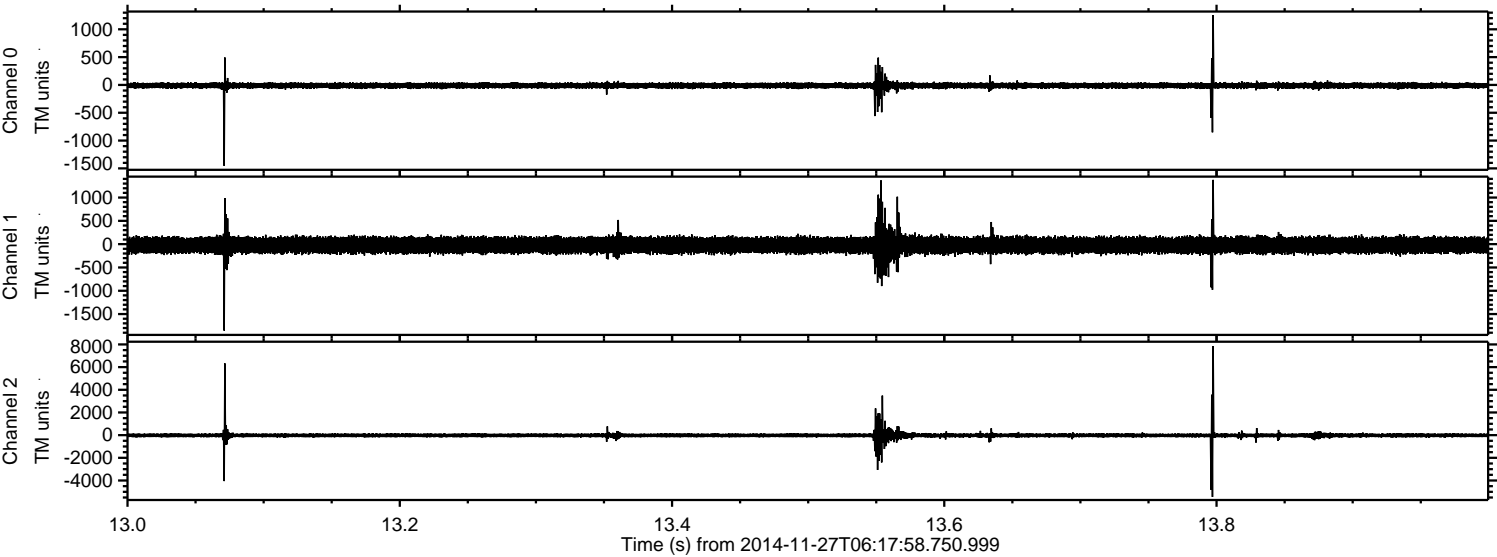
Channel 0
mn: -1093
mx: 1577
 μ : -11.2
 σ : 26.9

Channel 1
mn: -5115
mx: 6908
 μ : -21.8
 σ : 107.9

Channel 2
mn: -5713
mx: 7939
 μ : -23.0
 σ : 110.1

ELMAVAN 3D WAVEFORMS (Measured data sampled at 50 kHz) 49792 packets of 144 samples from 2014-11-27T06:17:58.750.999. Part 14/144

Processed Thu Nov 27 07:25:37 2014 by ELM ver.2012-10-06 from 001__elm20141127_061757__dat00.bin



ELMAVAN 3D WAVEFORMS (Measured data sampled at 50 kHz) 49792 packets of 144 samples from 2014-11-27T06:17:58.750.999. Part 100/144

