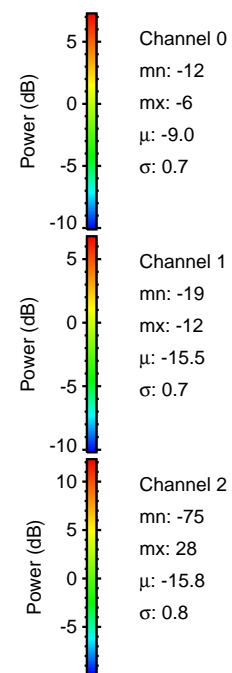
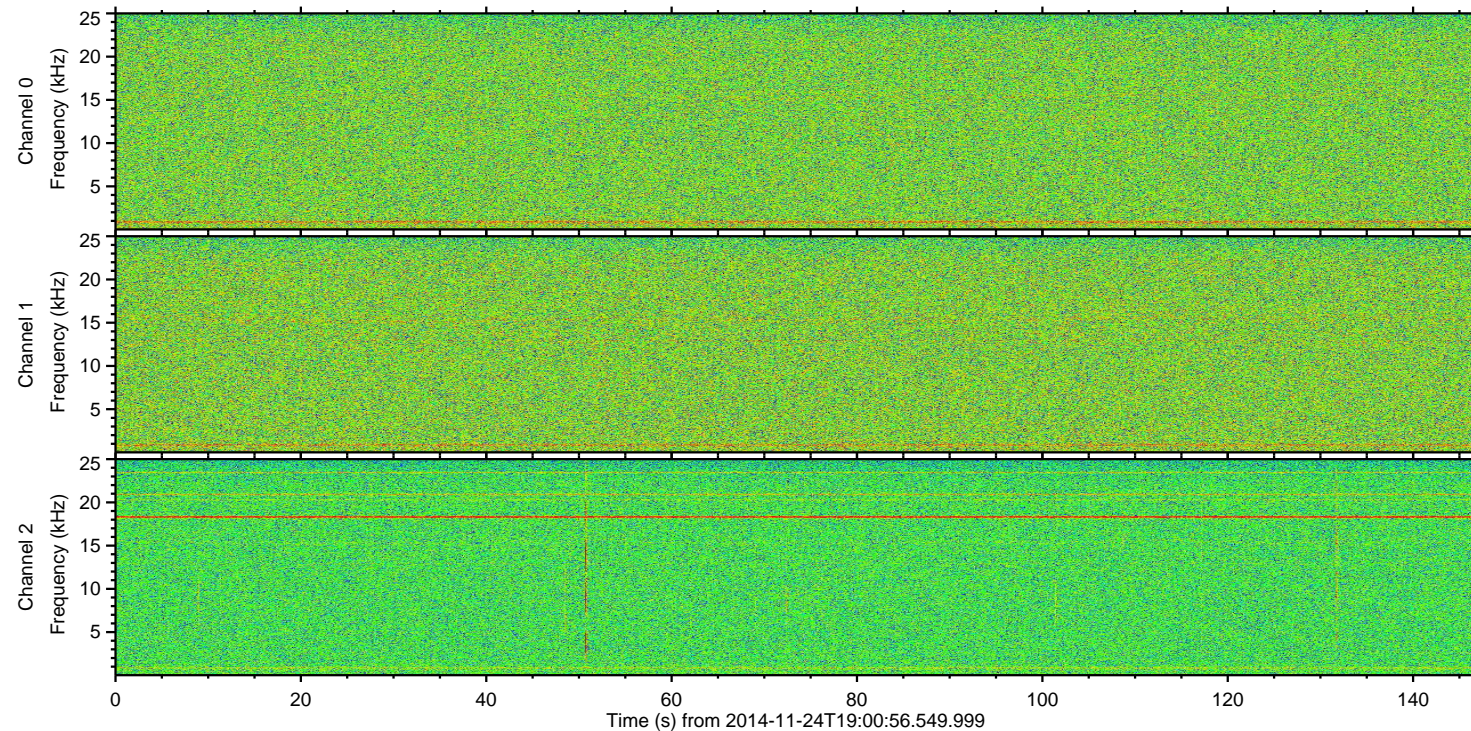
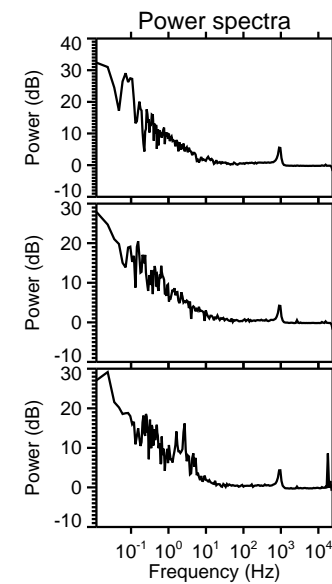
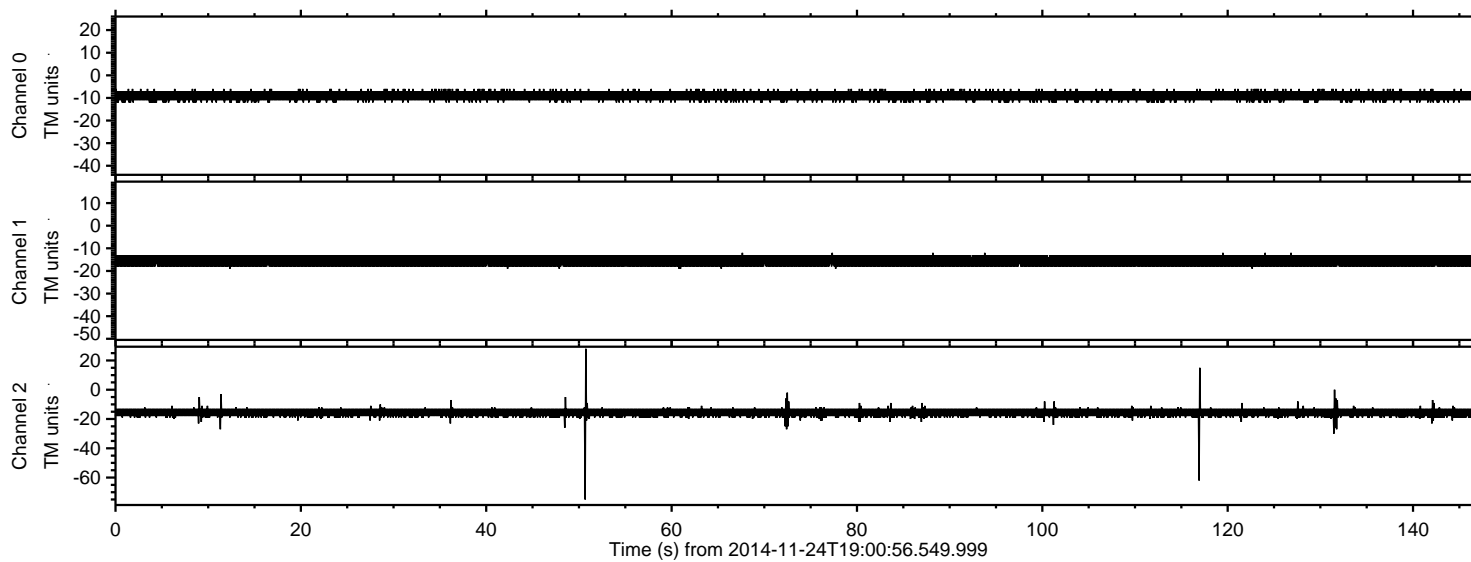


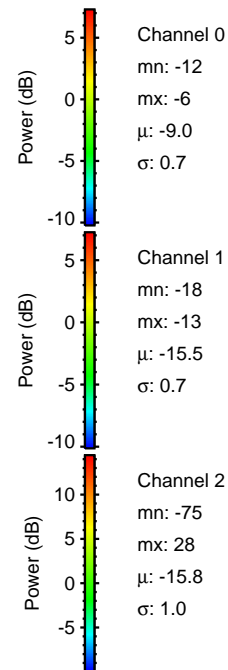
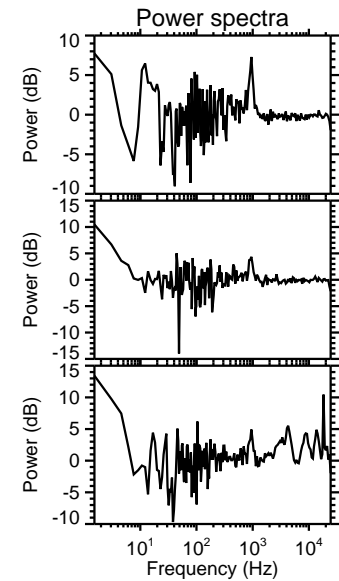
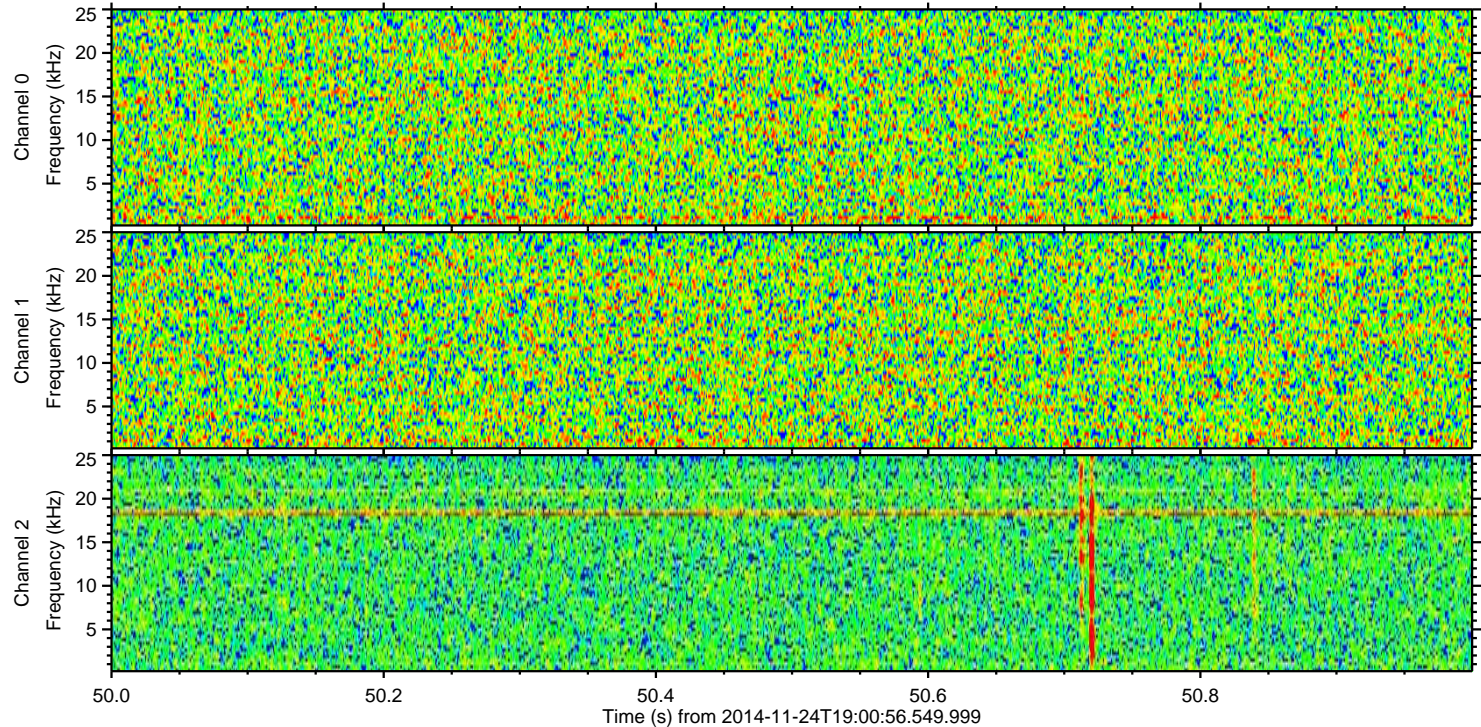
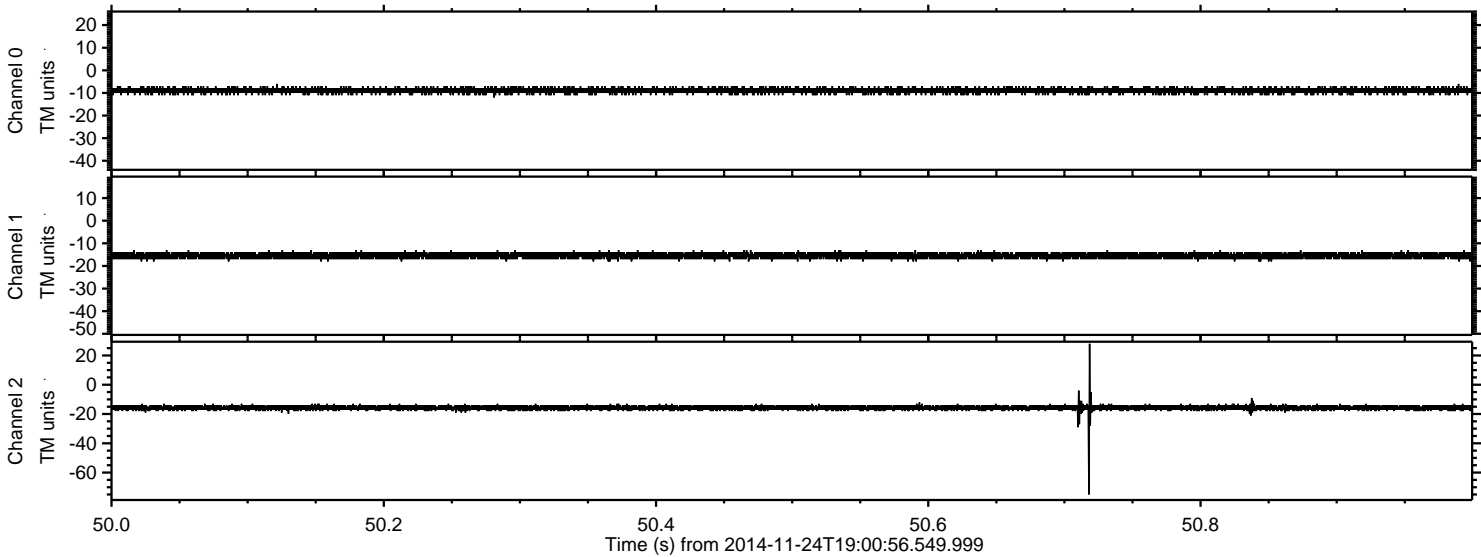
# ELMAVAN 3D WAVEFORMS (Measured data sampled at 50 kHz) 51000 packets of 144 samples from 2014-11-24T19:00:56.549.999.

Processed Mon Nov 24 20:08:05 2014 by ELM ver.2012-10-06 from 001\_\_elm20141124\_190055\_\_dat00.bin





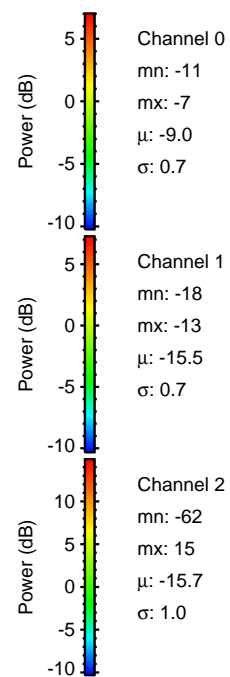
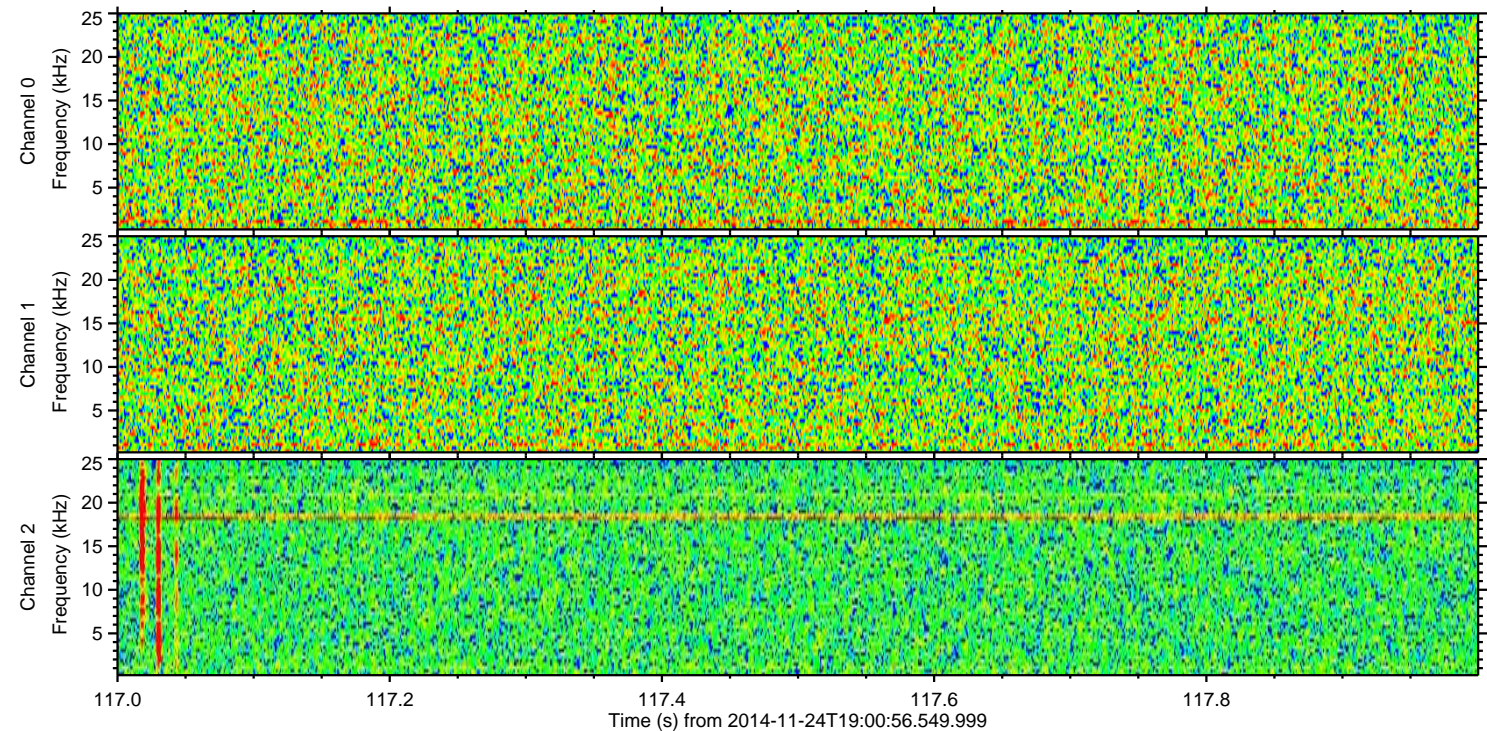
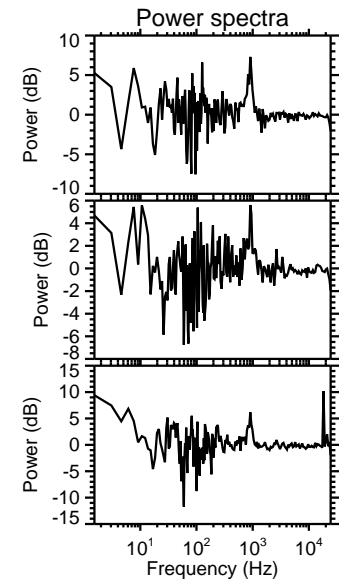
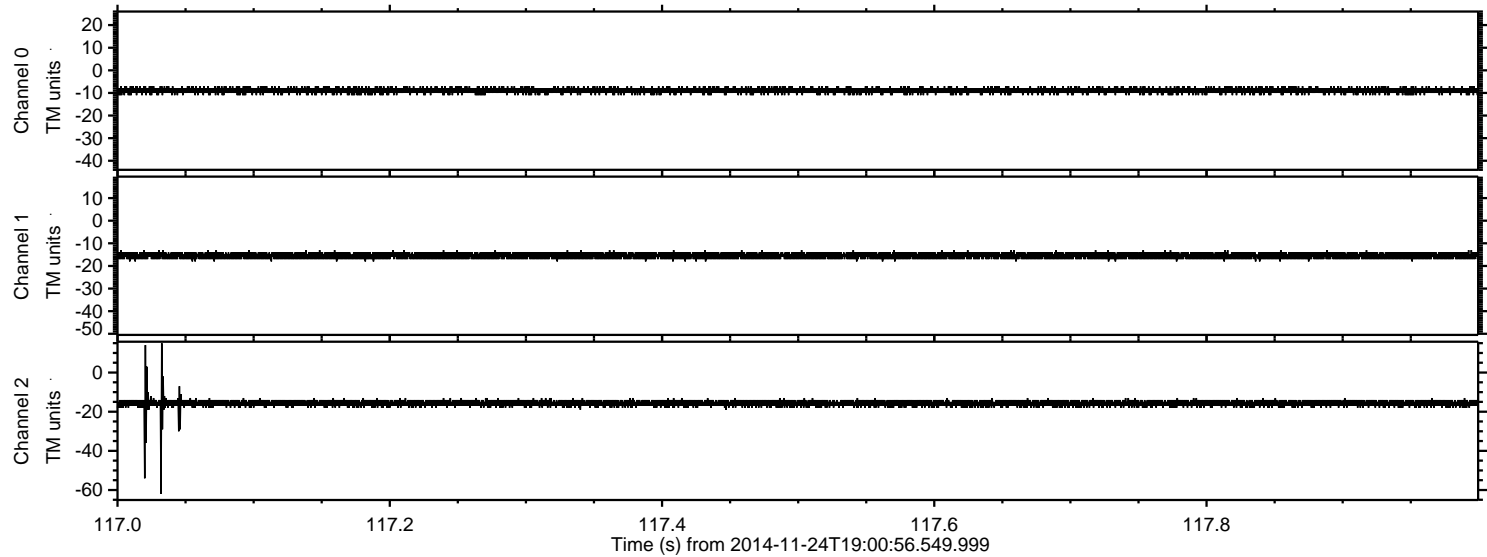
Processed Mon Nov 24 20:08:17 2014 by ELM ver.2012-10-06 from 001\_\_elm20141124\_190055\_\_dat00.bin





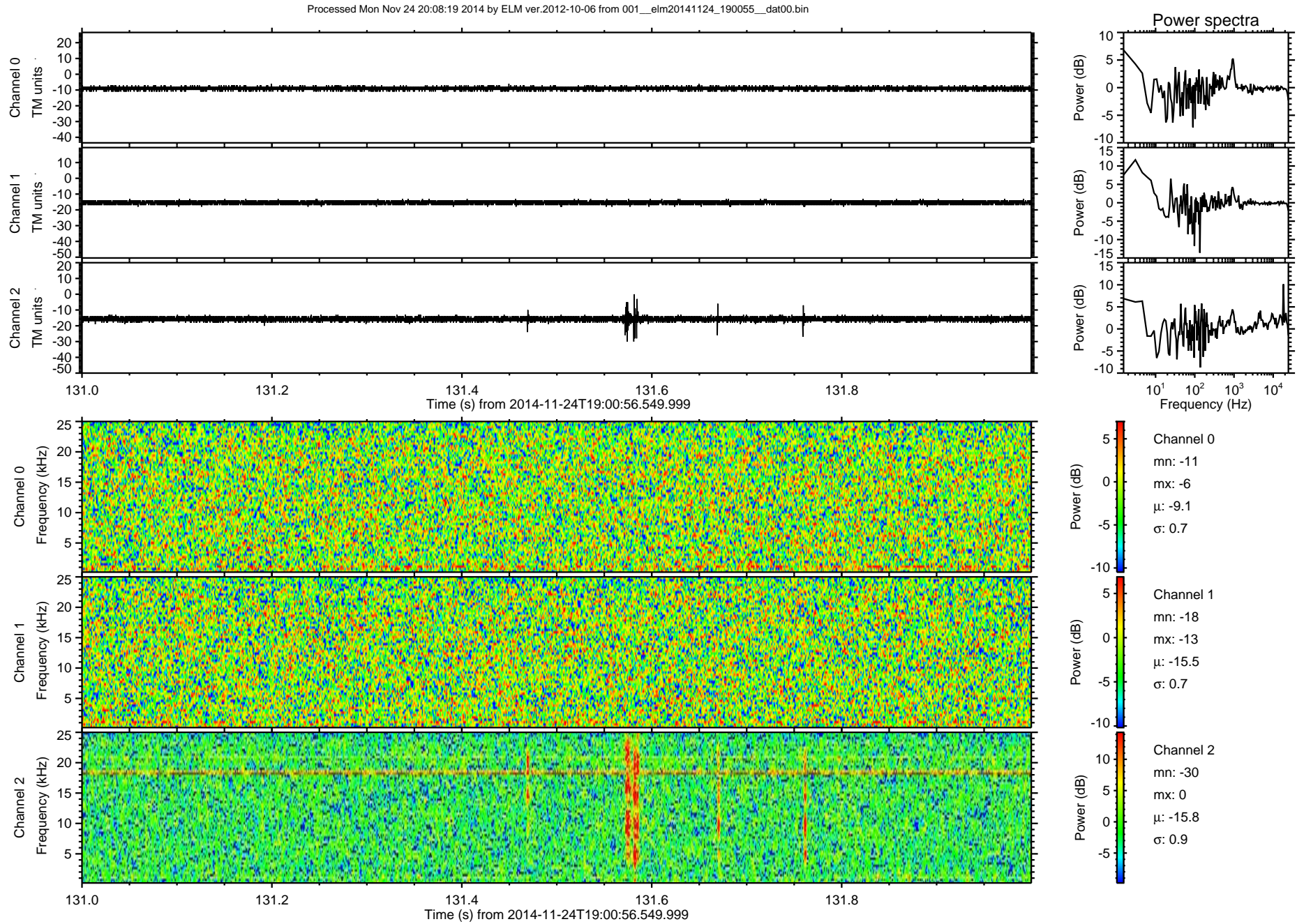
ELMAVAN 3D WAVEFORMS (Measured data sampled at 50 kHz) 51000 packets of 144 samples from 2014-11-24T19:00:56.549.999. Part 118/147

Processed Mon Nov 24 20:08:18 2014 by ELM ver.2012-10-06 from 001\_\_elm20141124\_190055\_\_dat00.bin



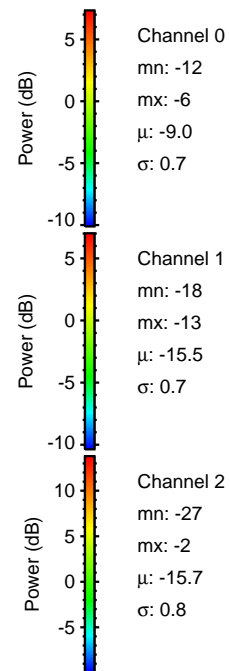
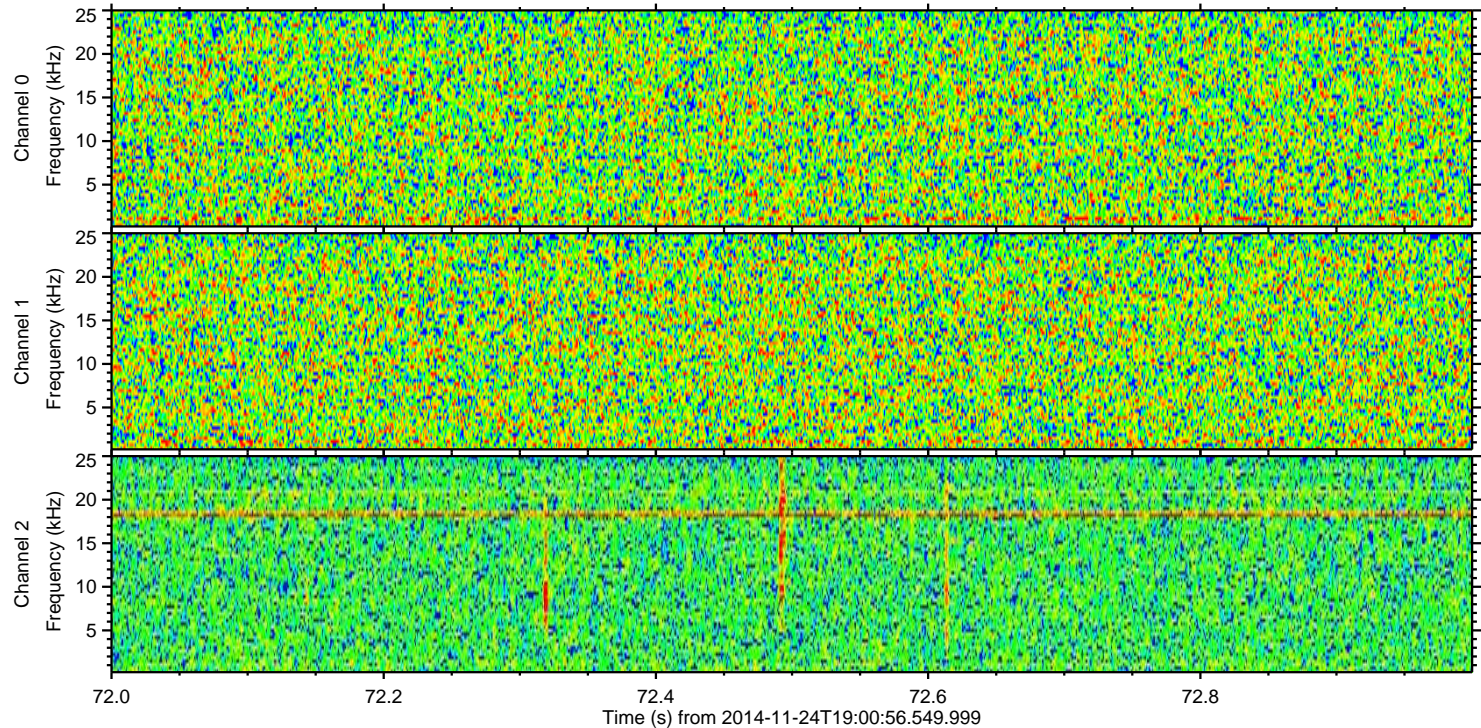
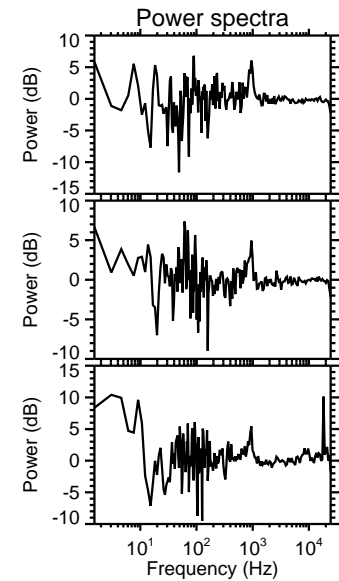
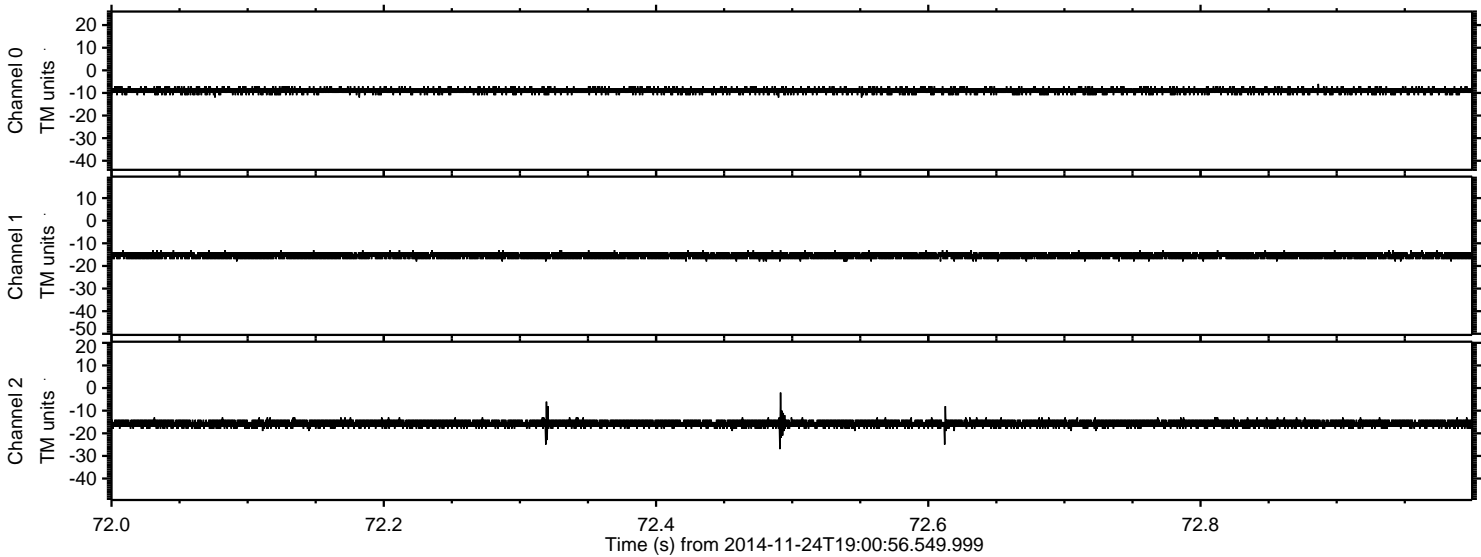


ELMAVAN 3D WAVEFORMS (Measured data sampled at 50 kHz) 51000 packets of 144 samples from 2014-11-24T19:00:56.549.999. Part 132/147



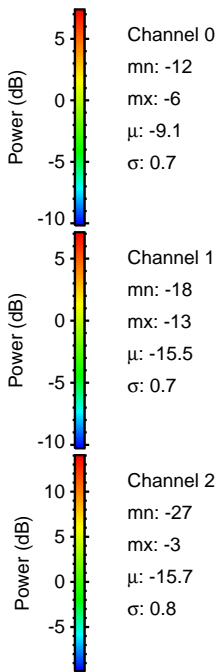
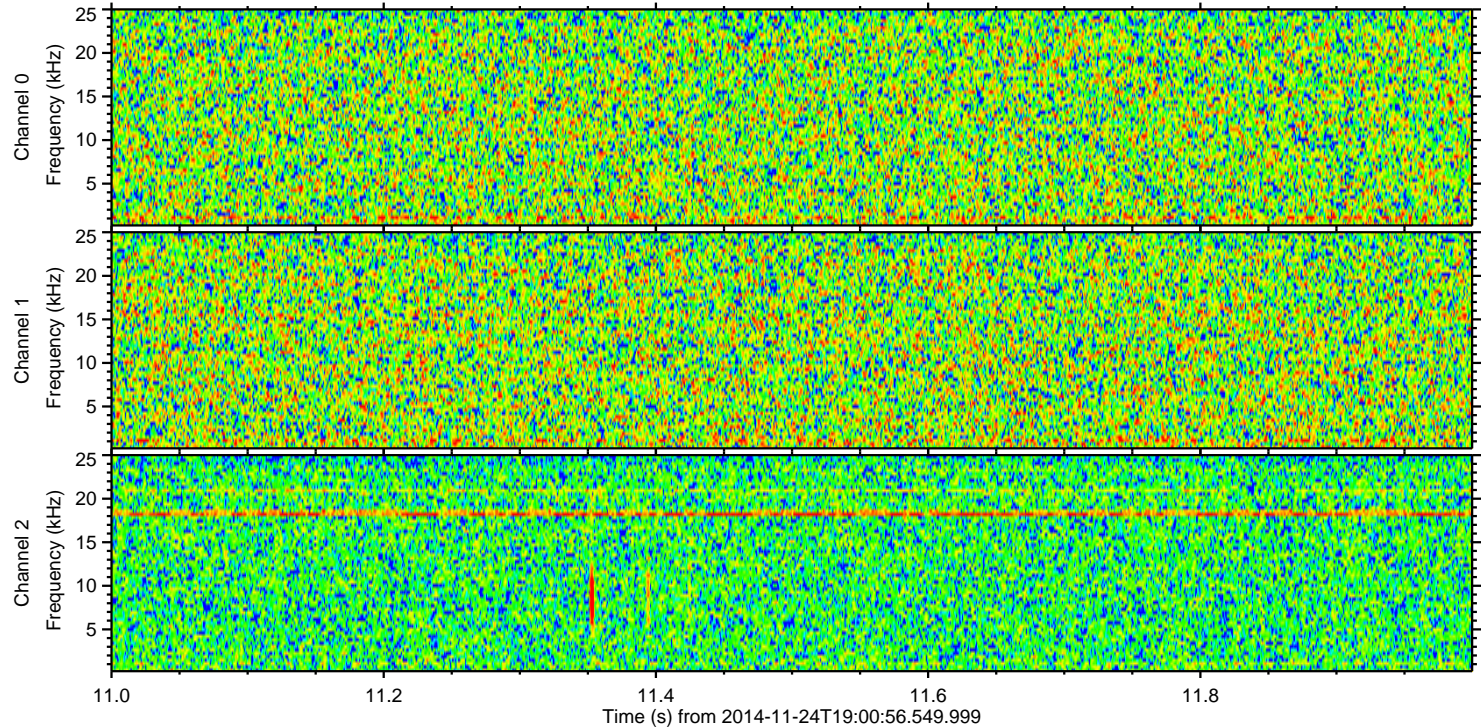
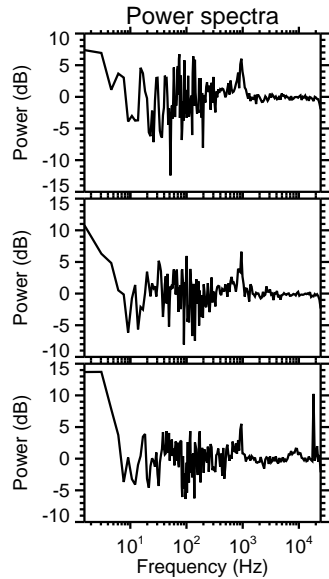
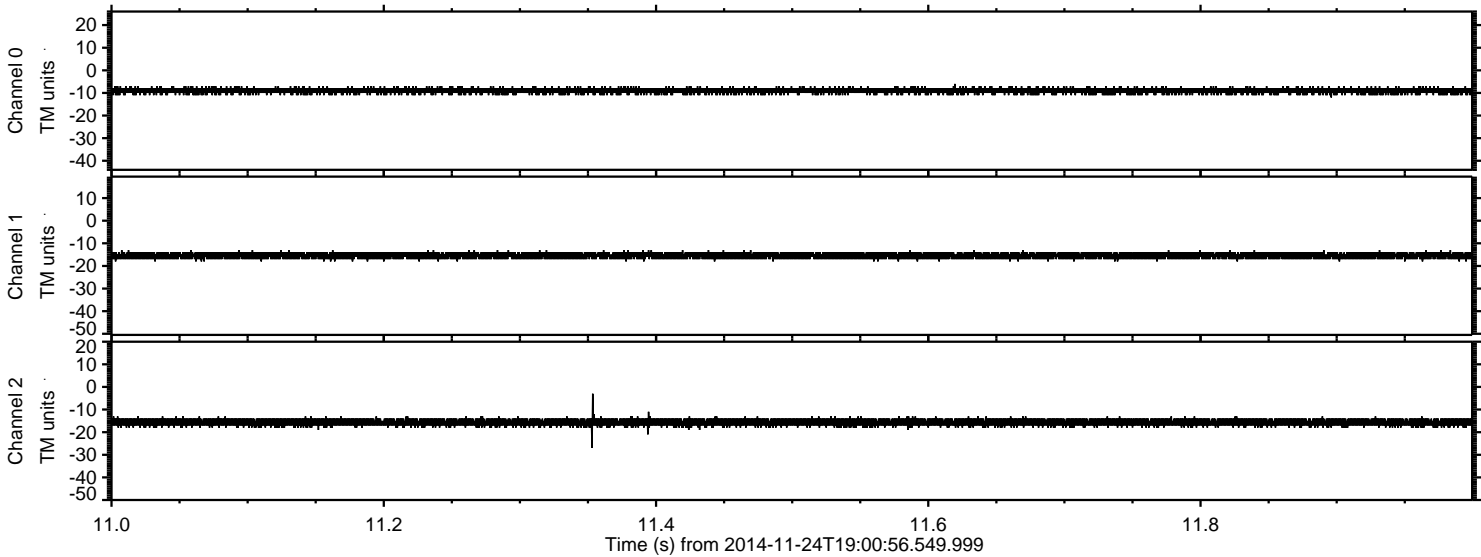


Processed Mon Nov 24 20:08:20 2014 by ELM ver.2012-10-06 from 001\_\_elm20141124\_190055\_\_dat00.bin



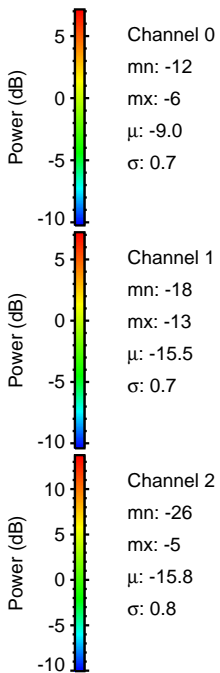
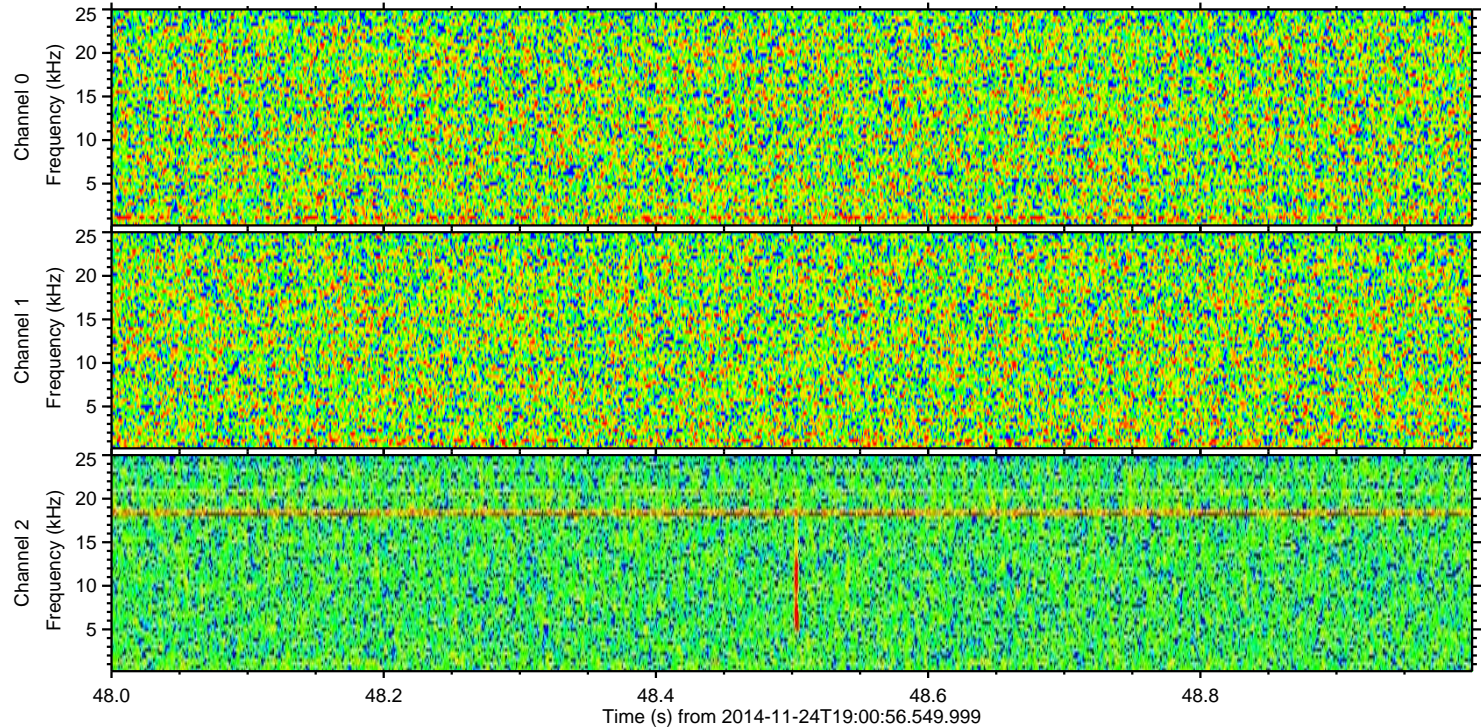
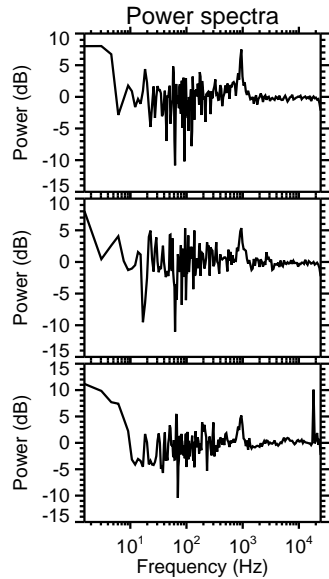
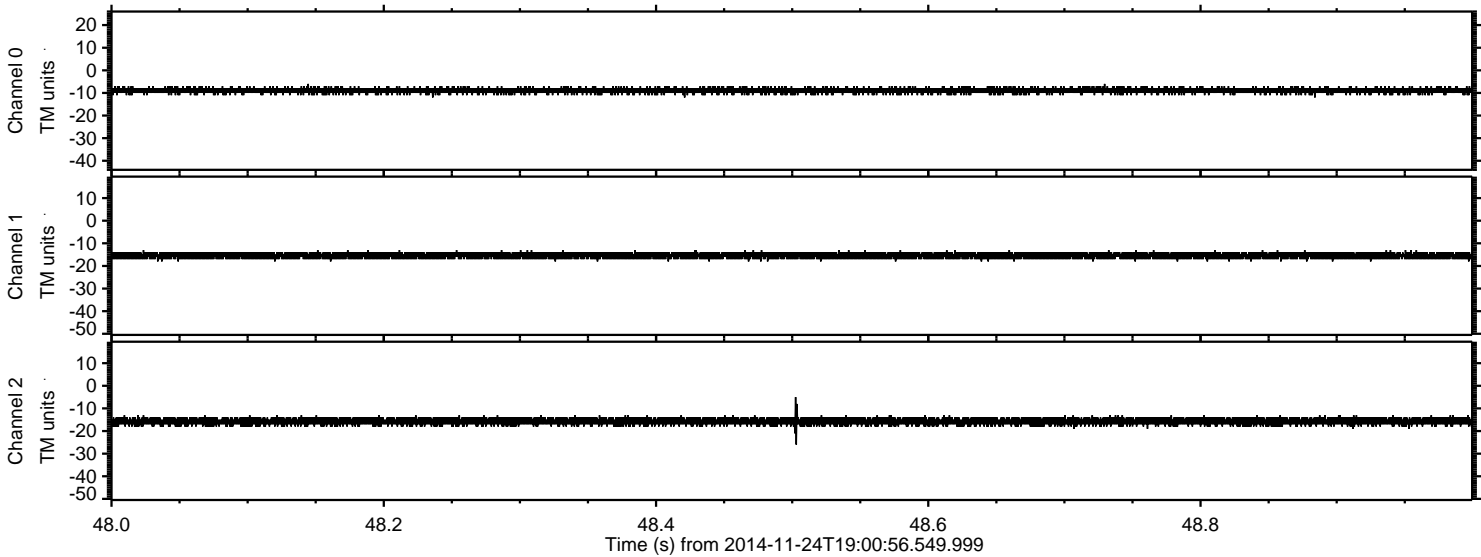


Processed Mon Nov 24 20:08:21 2014 by ELM ver.2012-10-06 from 001\_\_elm20141124\_190055\_\_dat00.bin



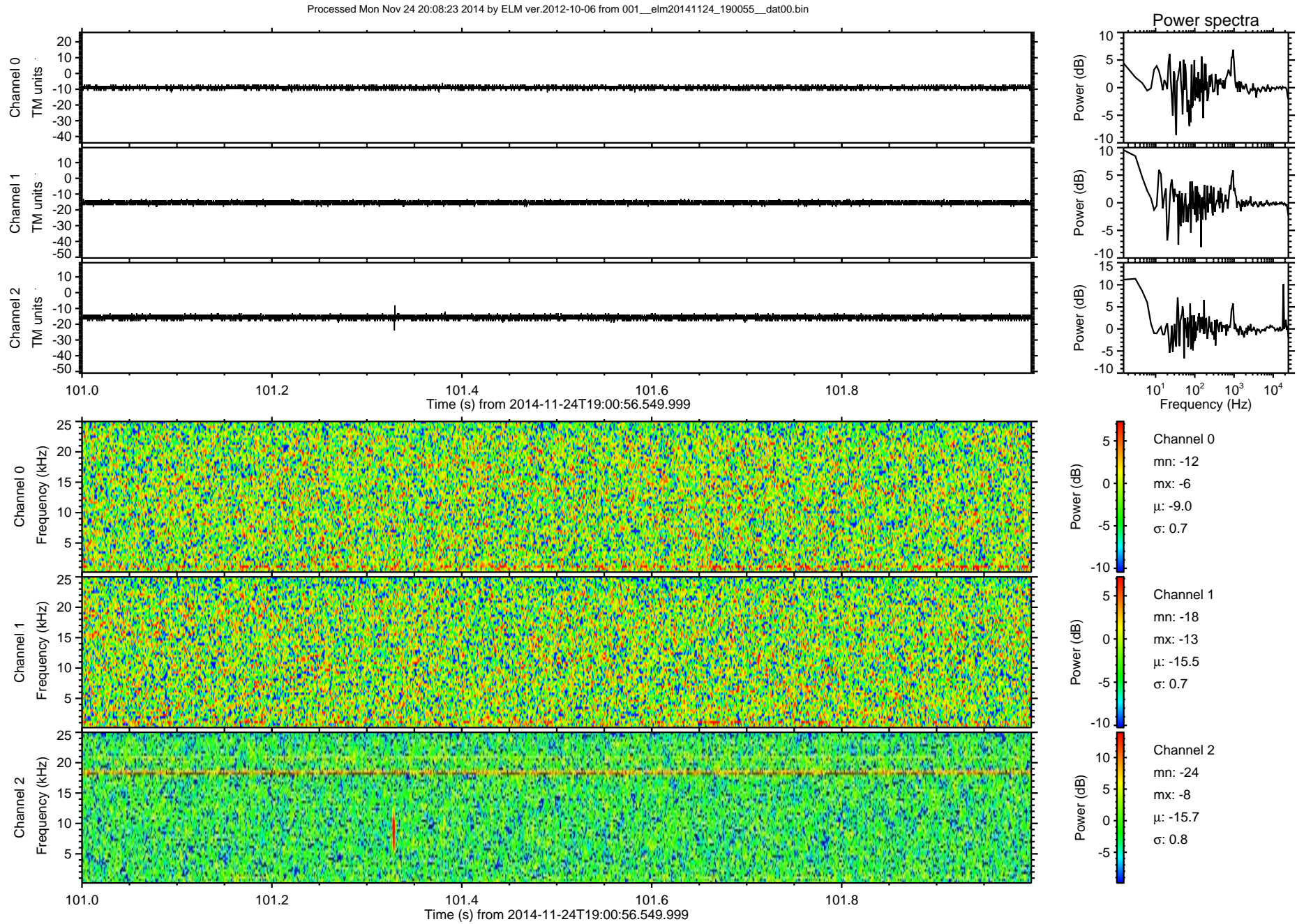


Processed Mon Nov 24 20:08:22 2014 by ELM ver.2012-10-06 from 001\_\_elm20141124\_190055\_\_dat00.bin



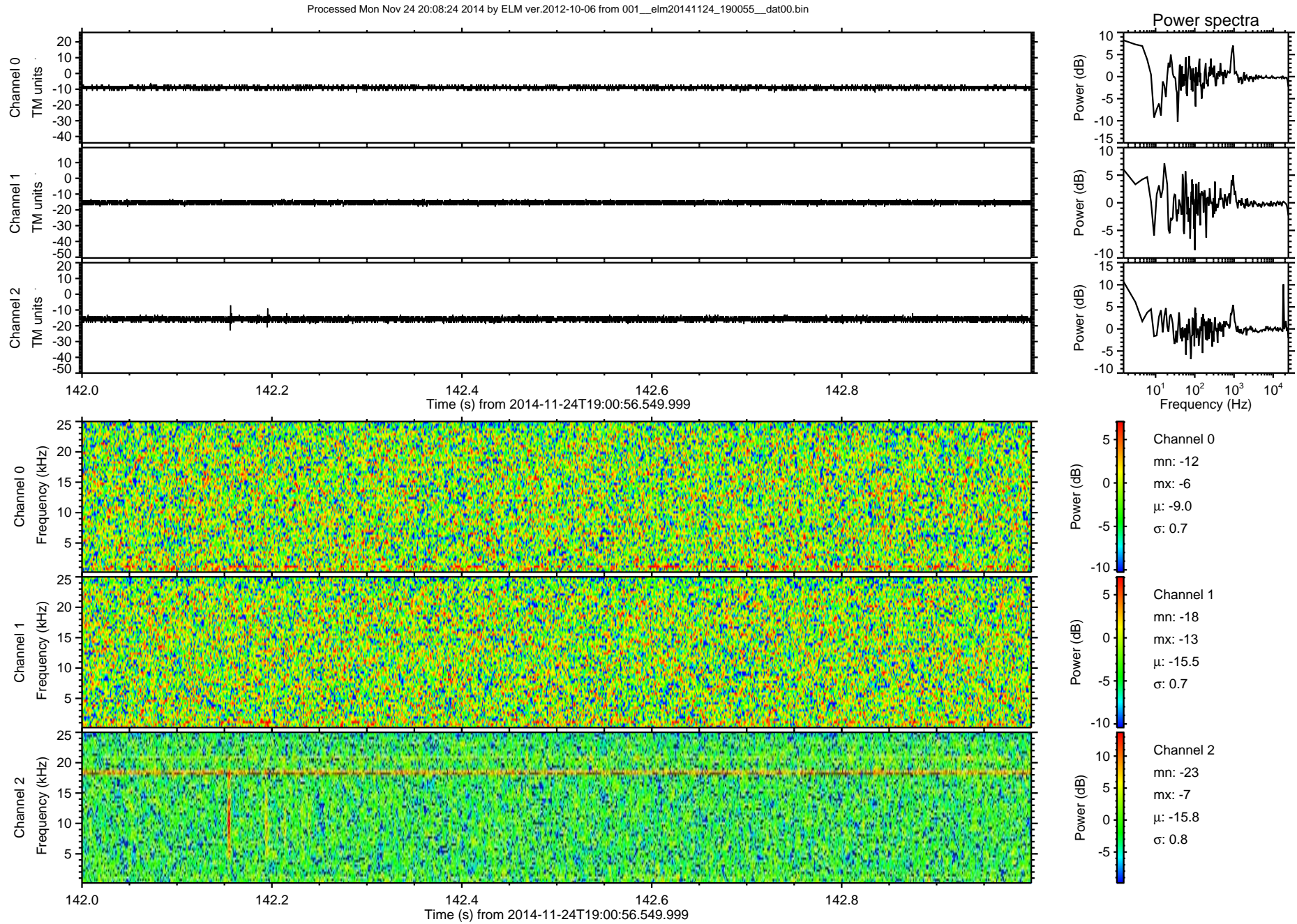


ELMAVAN 3D WAVEFORMS (Measured data sampled at 50 kHz) 51000 packets of 144 samples from 2014-11-24T19:00:56.549.999. Part 102/147



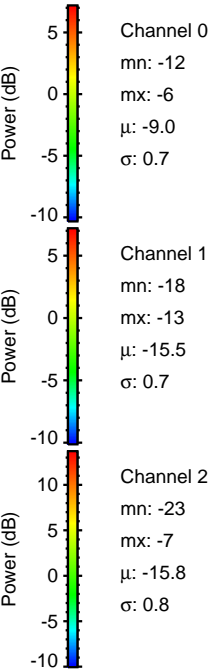
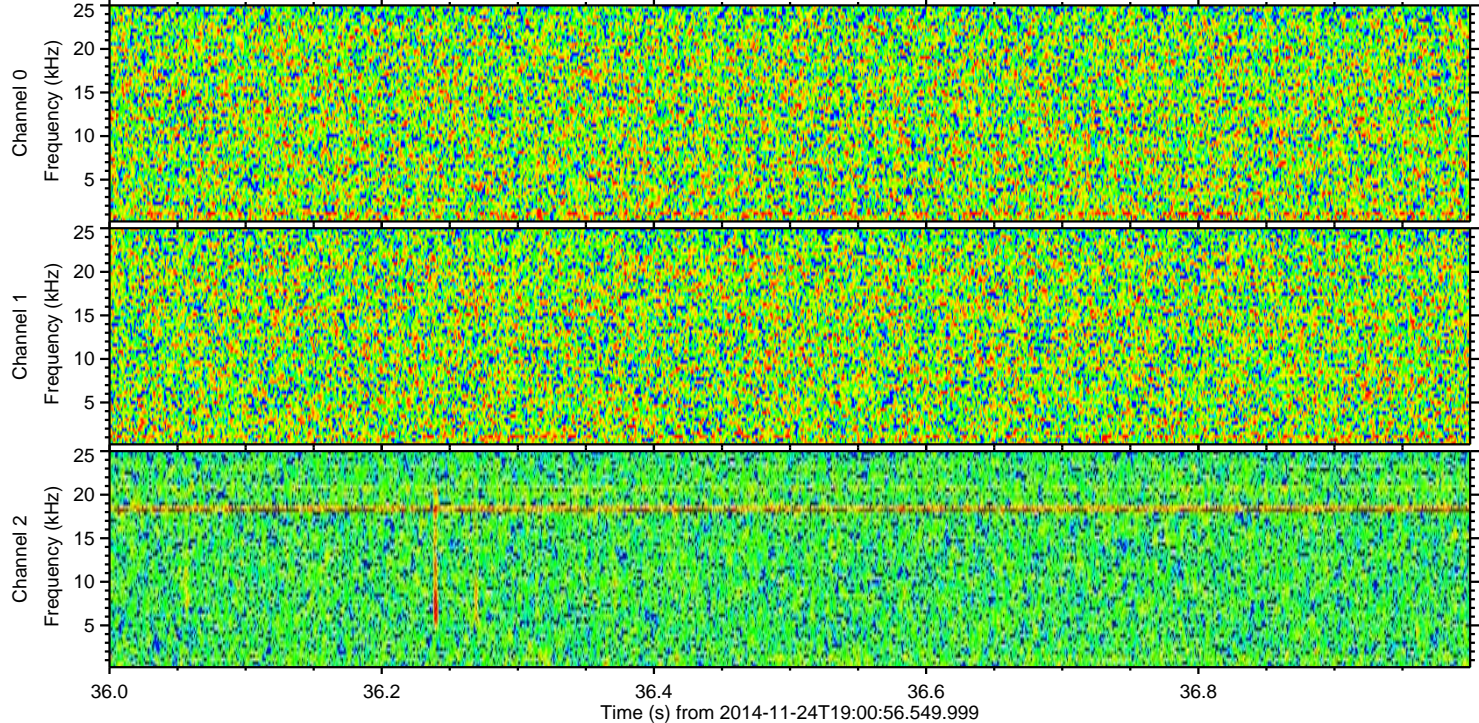
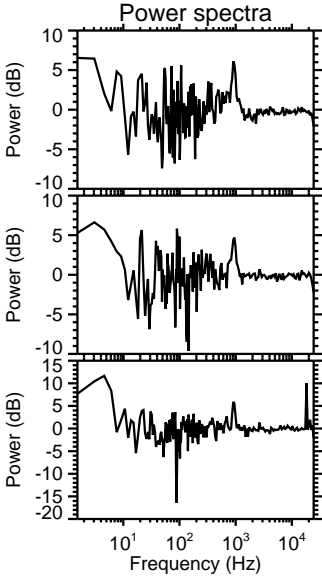
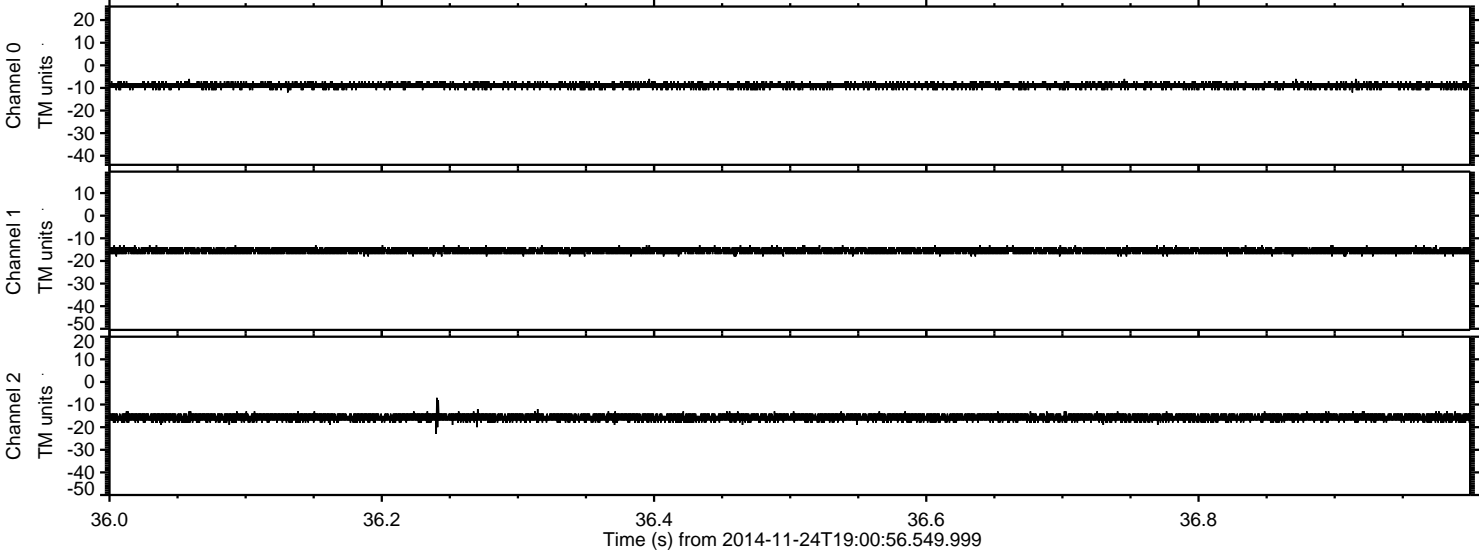


ELMAVAN 3D WAVEFORMS (Measured data sampled at 50 kHz) 51000 packets of 144 samples from 2014-11-24T19:00:56.549.999. Part 143/147





Processed Mon Nov 24 20:08:25 2014 by ELM ver.2012-10-06 from 001\_\_elm20141124\_190055\_\_dat00.bin





Processed Mon Nov 24 20:08:26 2014 by ELM ver.2012-10-06 from 001\_\_elm20141124\_190055\_\_dat00.bin

