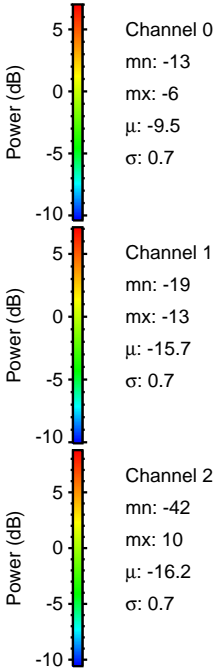
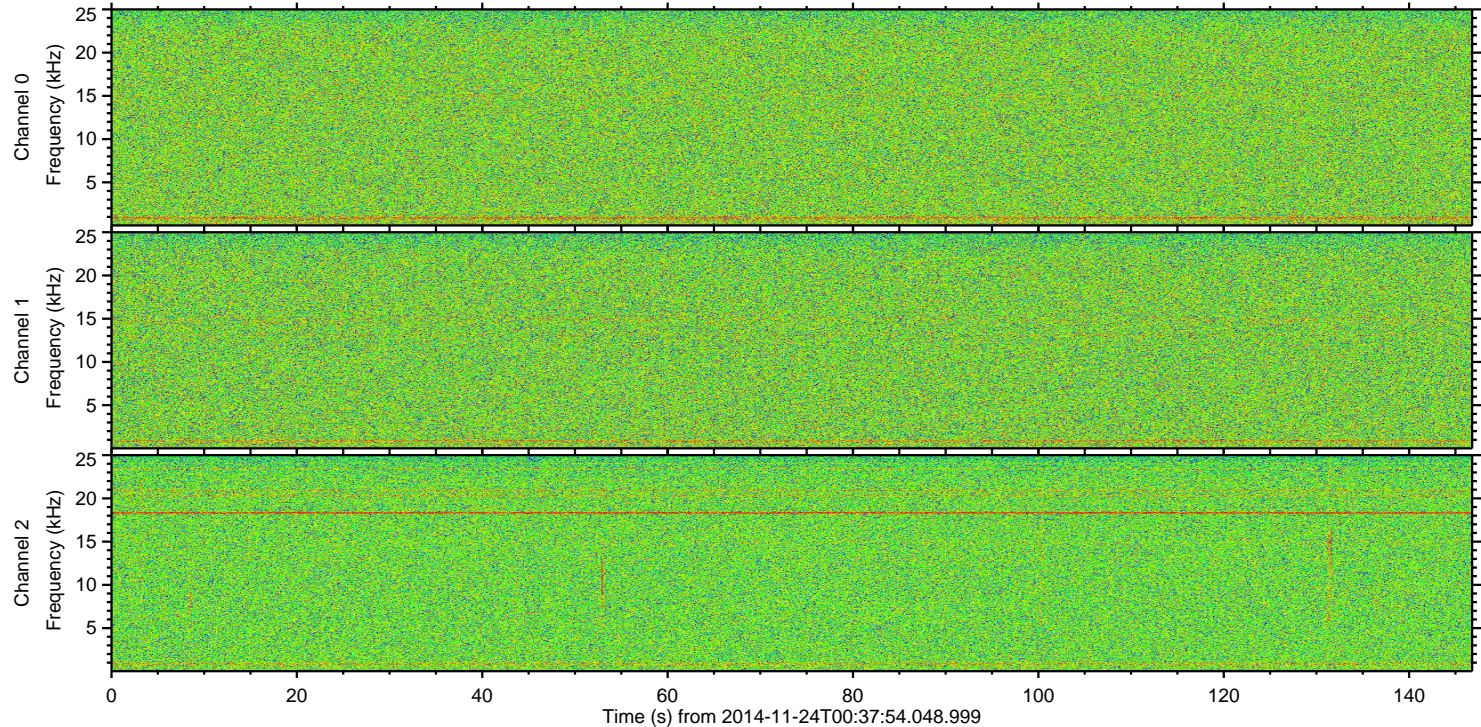
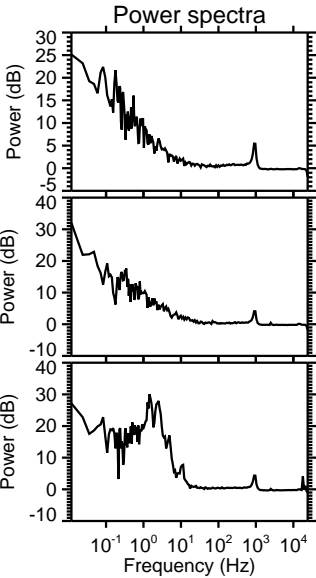
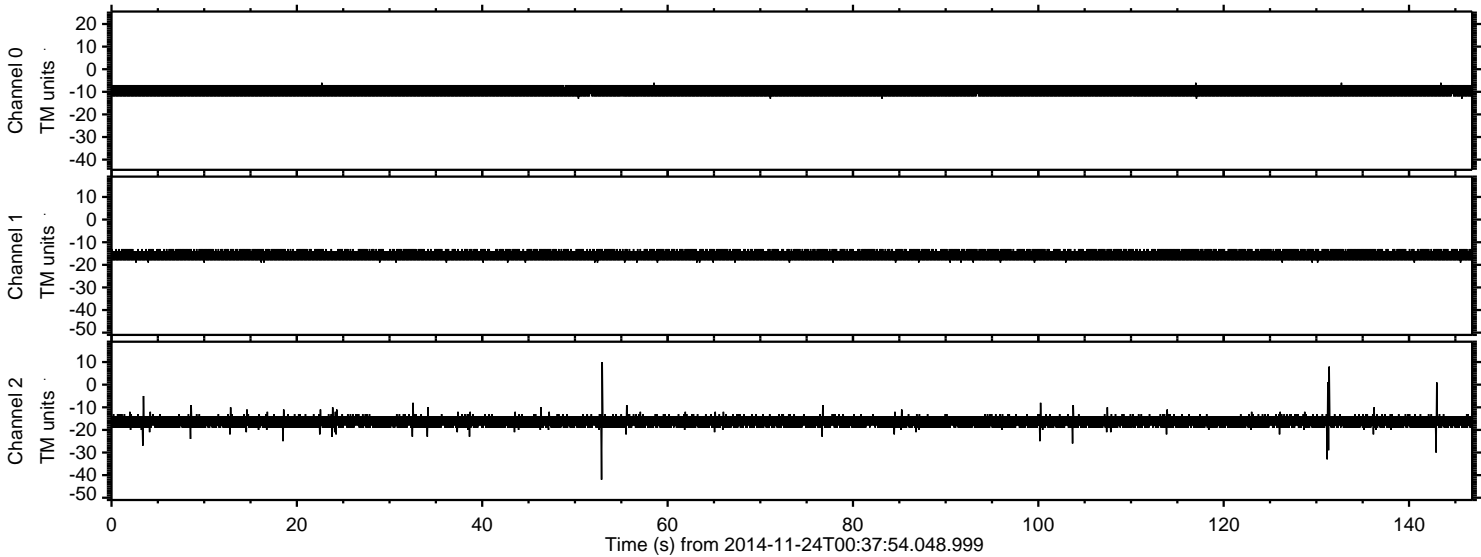


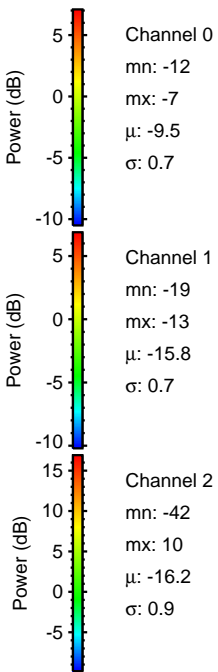
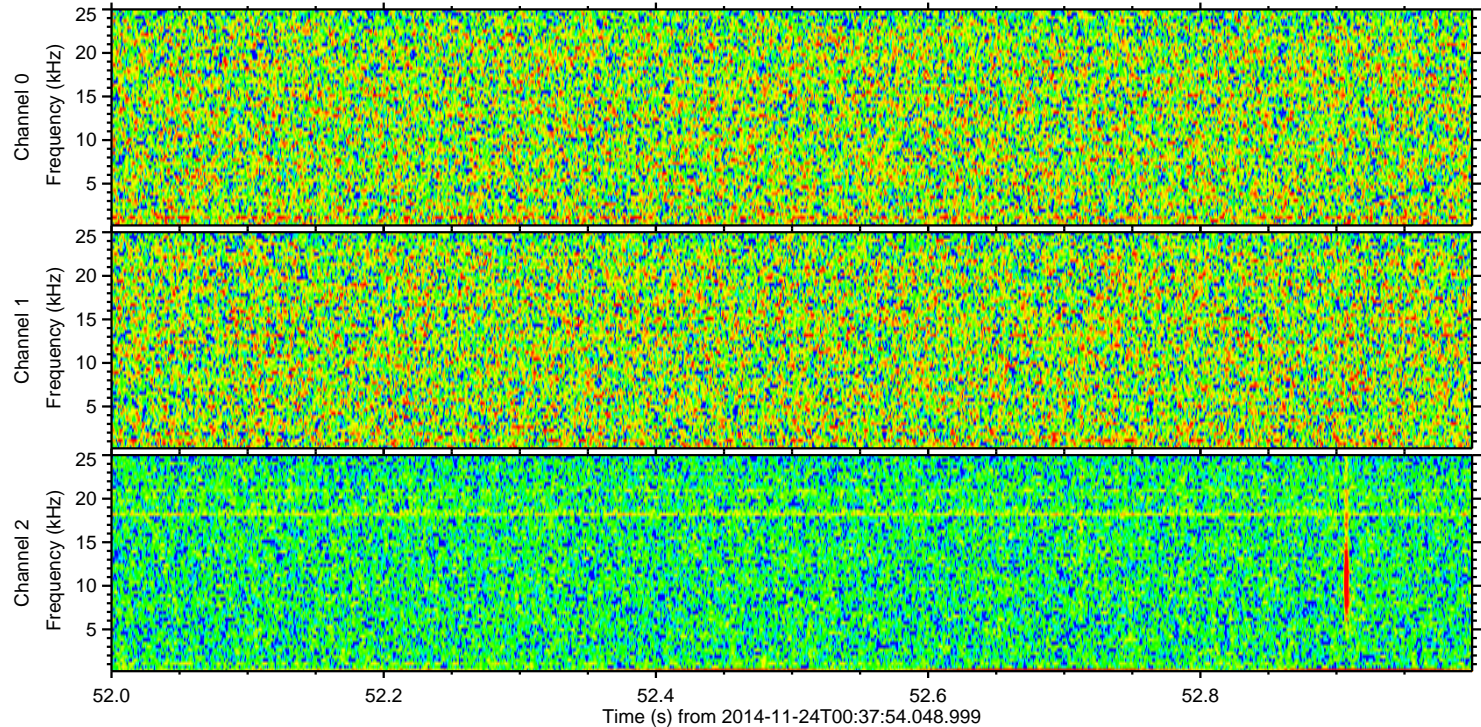
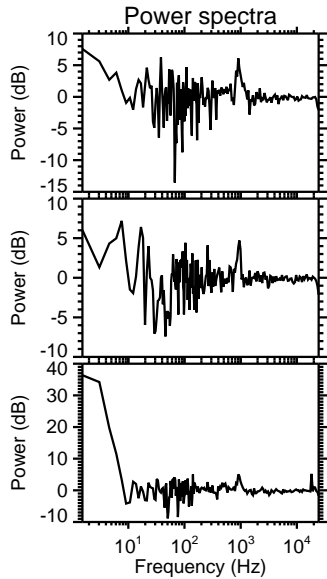
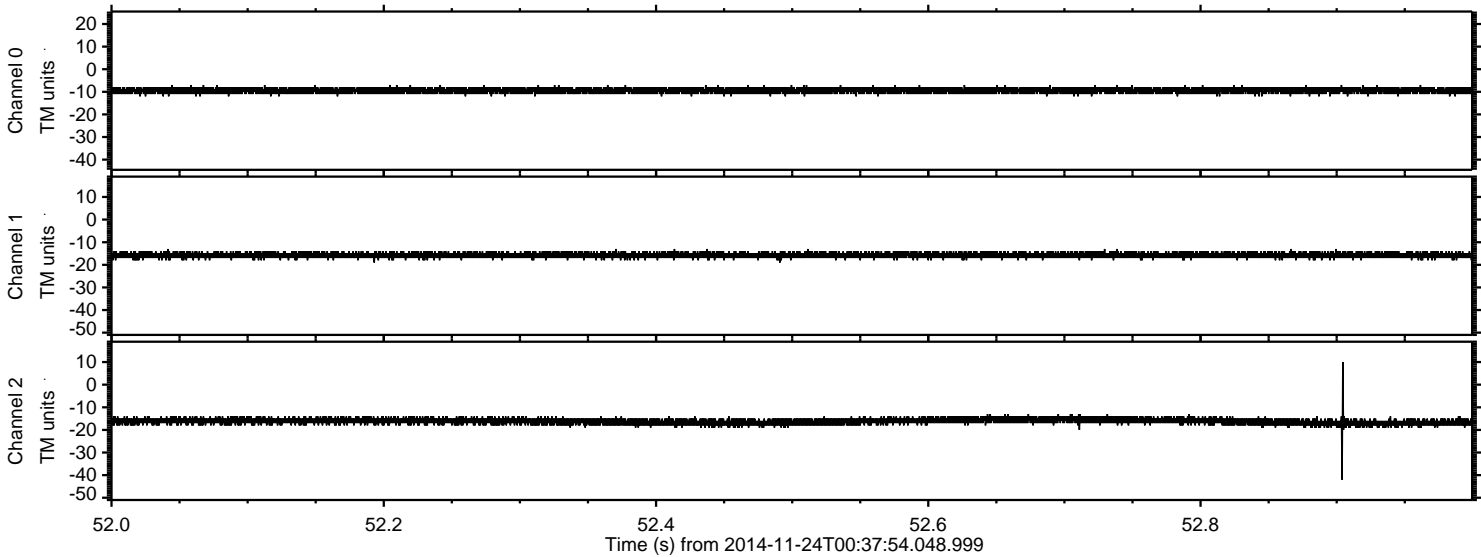
ELMAVAN 3D WAVEFORMS (Measured data sampled at 50 kHz) 51000 packets of 144 samples from 2014-11-24T00:37:54.048.999.

Processed Mon Nov 24 01:45:47 2014 by ELM ver.2012-10-06 from 001\_\_elm20141124\_003753\_\_dat00.bin





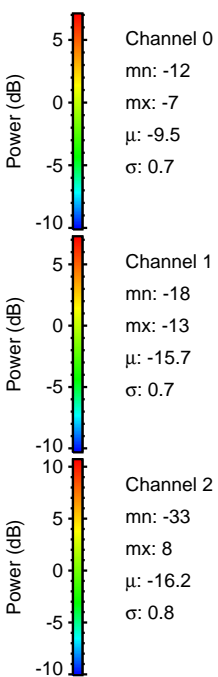
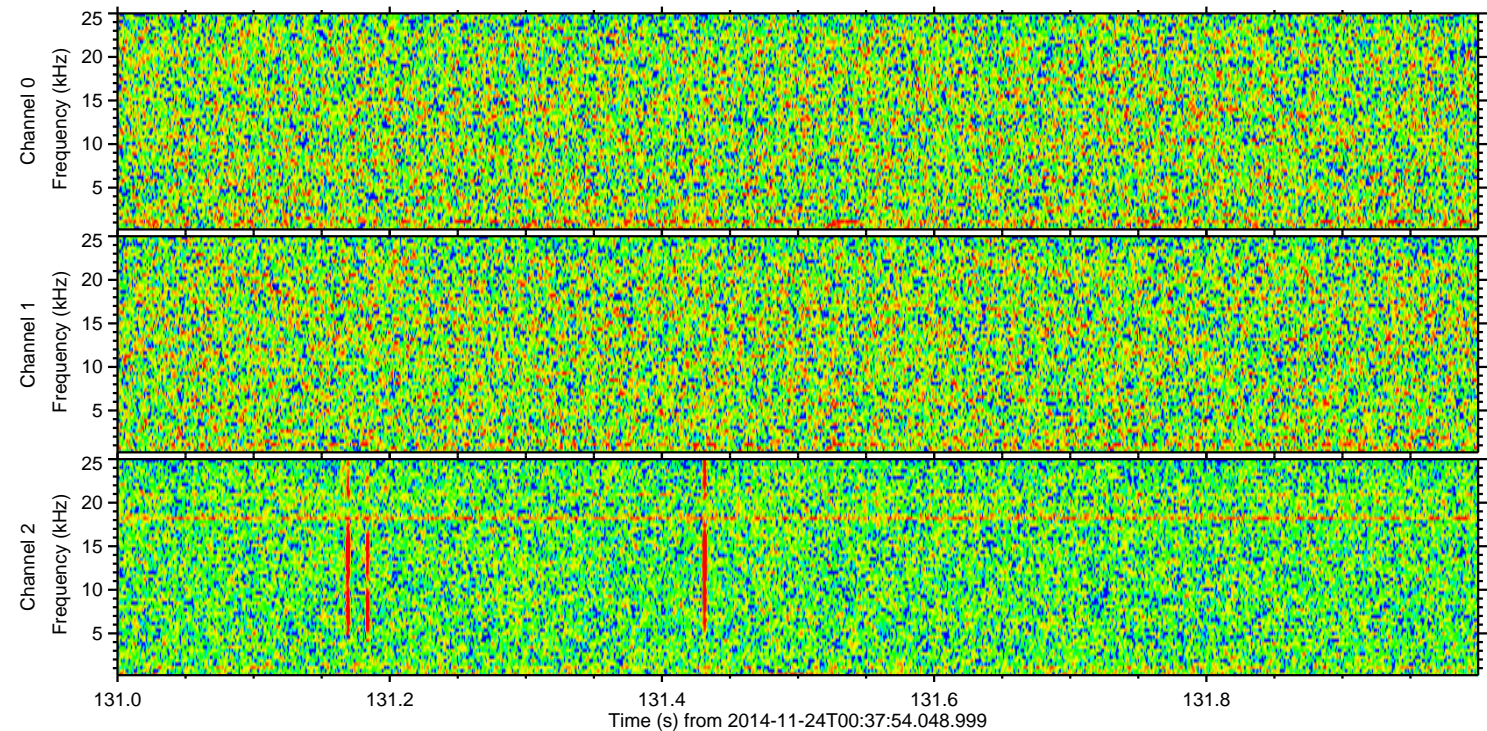
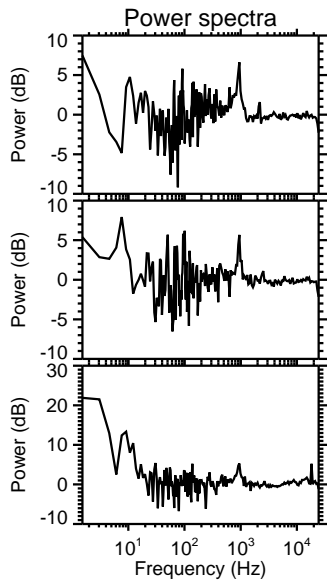
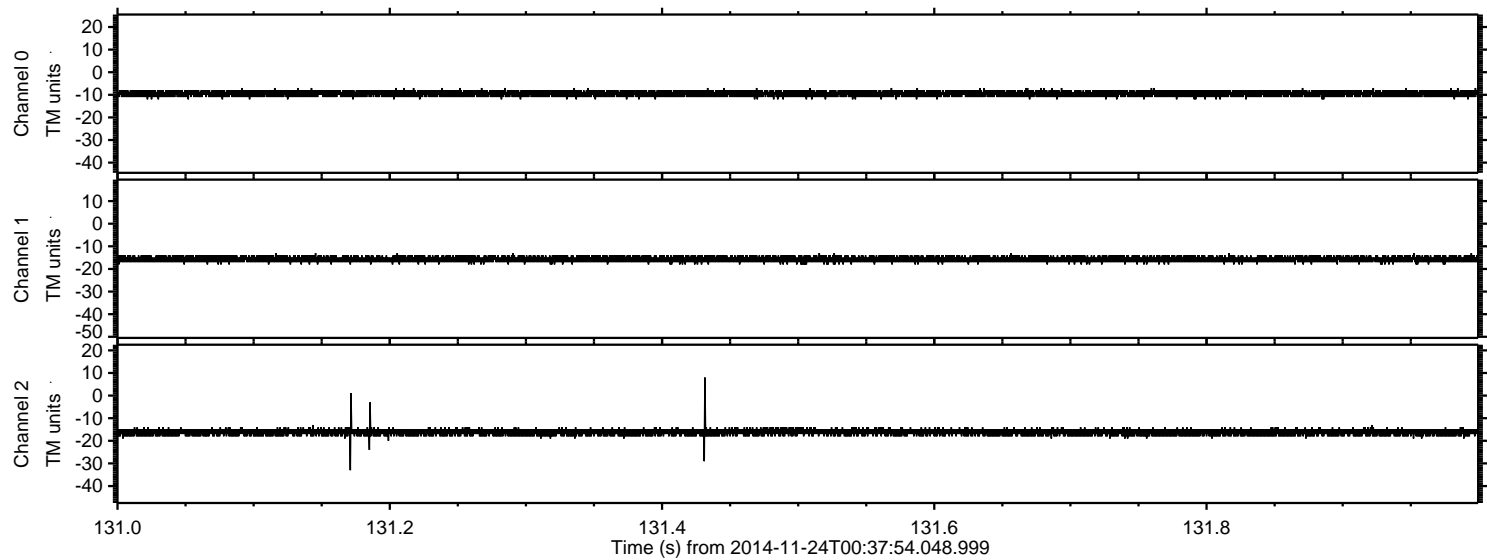
Processed Mon Nov 24 01:45:59 2014 by ELM ver.2012-10-06 from 001\_\_elm20141124\_003753\_\_dat00.bin





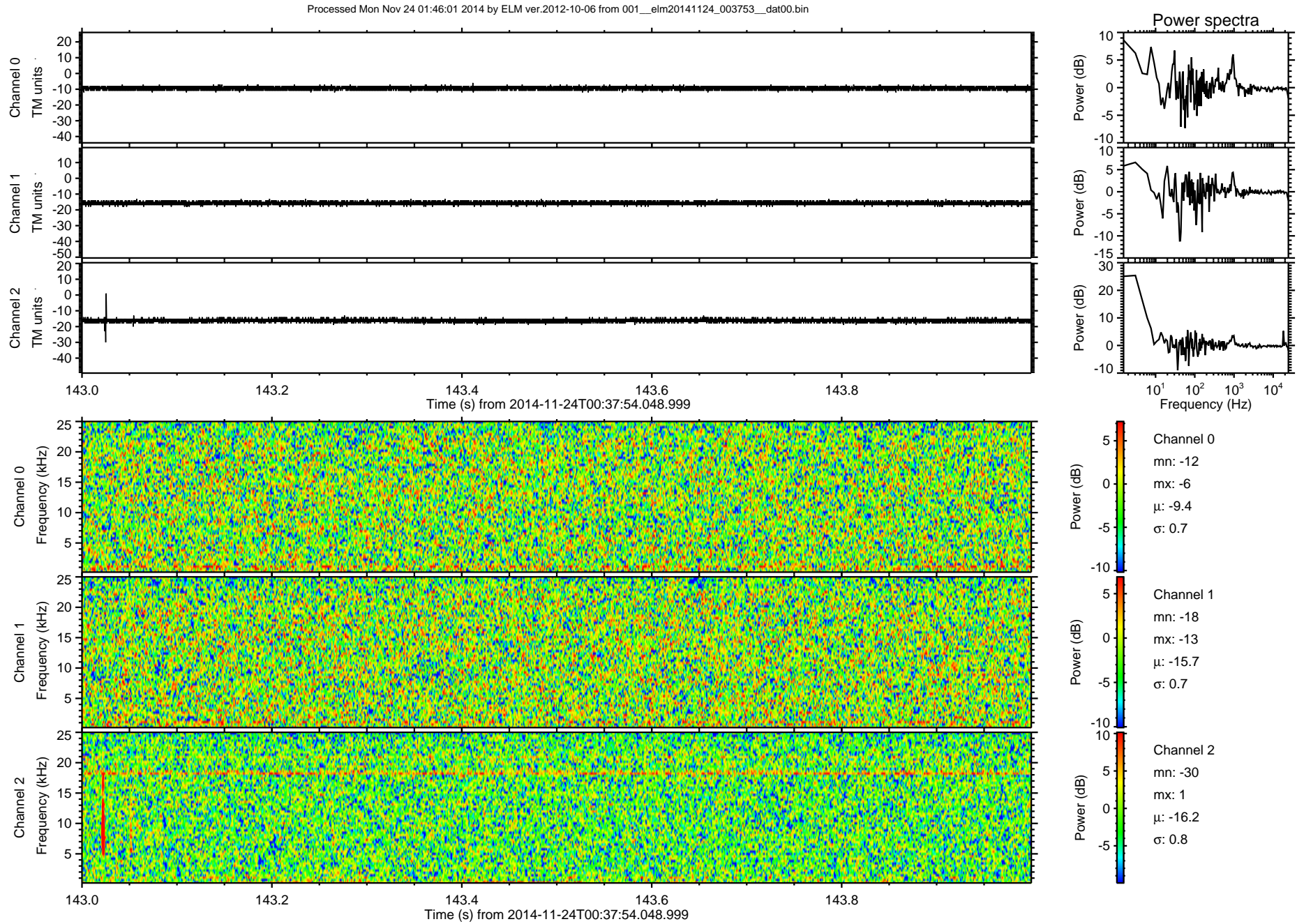
ELMAVAN 3D WAVEFORMS (Measured data sampled at 50 kHz) 51000 packets of 144 samples from 2014-11-24T00:37:54.048.999. Part 132/147

Processed Mon Nov 24 01:46:00 2014 by ELM ver.2012-10-06 from 001\_\_elm20141124\_003753\_\_dat00.bin



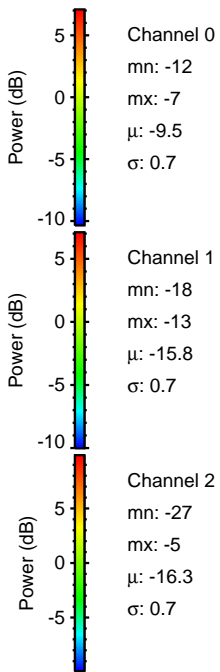
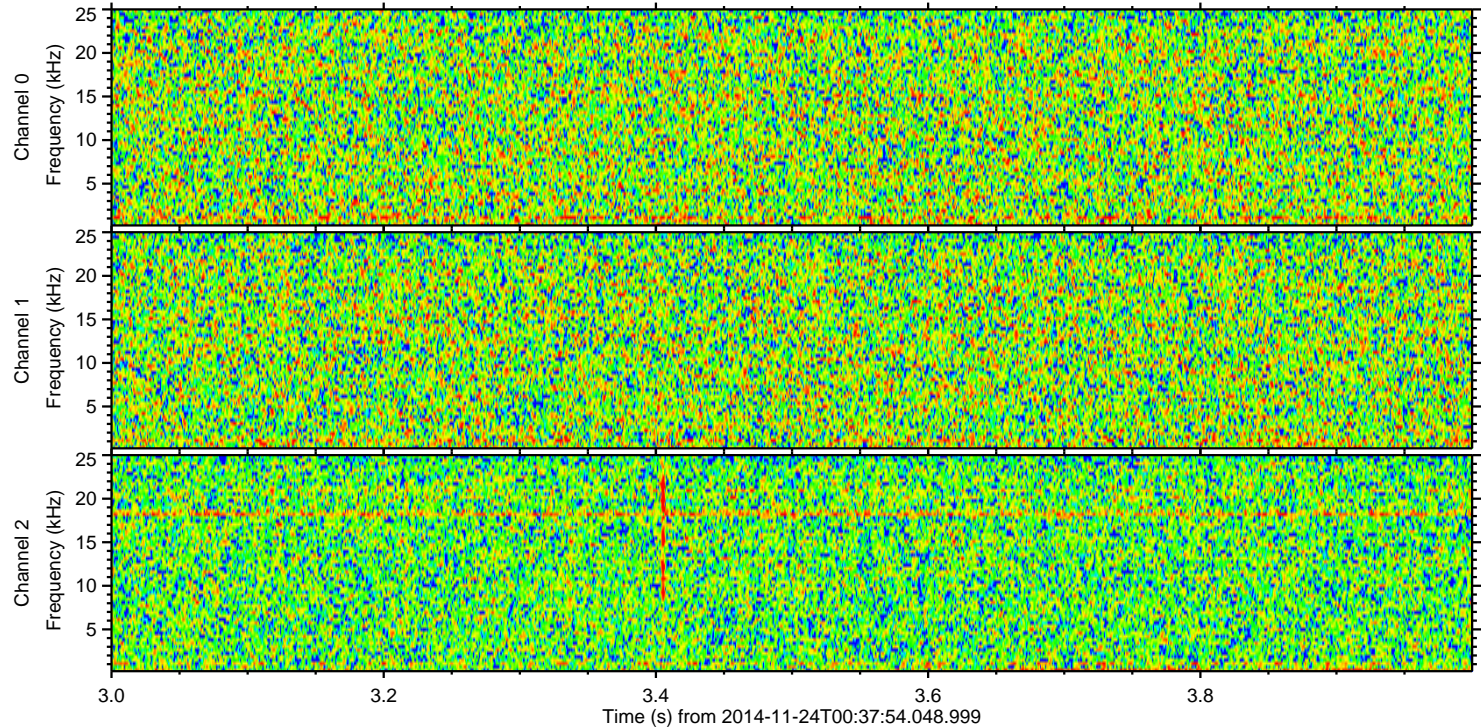
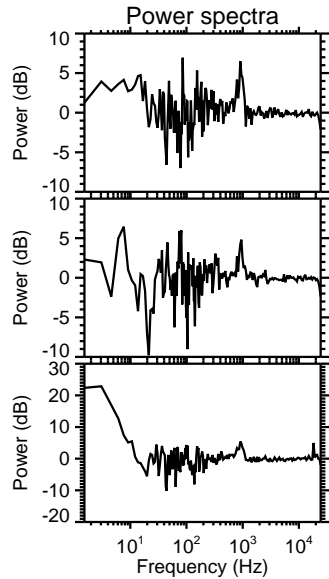
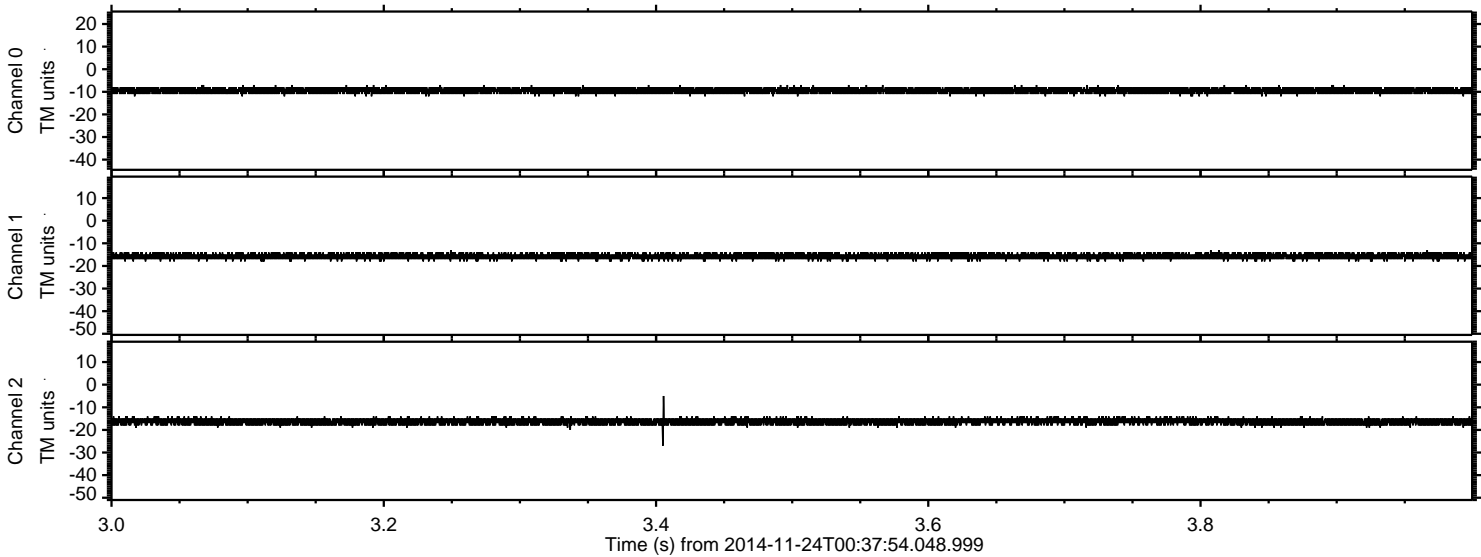


ELMAVAN 3D WAVEFORMS (Measured data sampled at 50 kHz) 51000 packets of 144 samples from 2014-11-24T00:37:54.048.999. Part 144/147



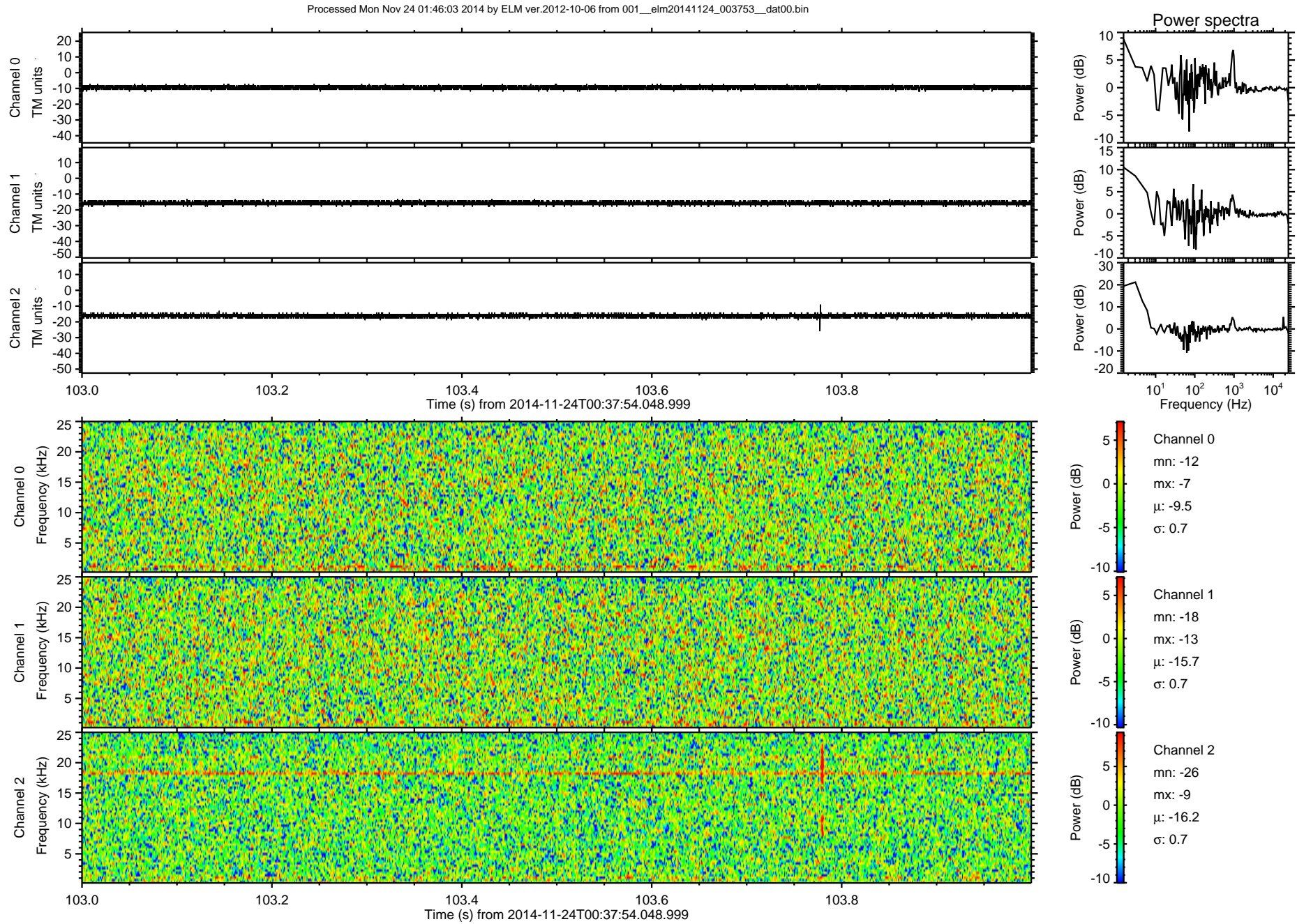


Processed Mon Nov 24 01:46:02 2014 by ELM ver.2012-10-06 from 001\_\_elm20141124\_003753\_\_dat00.bin



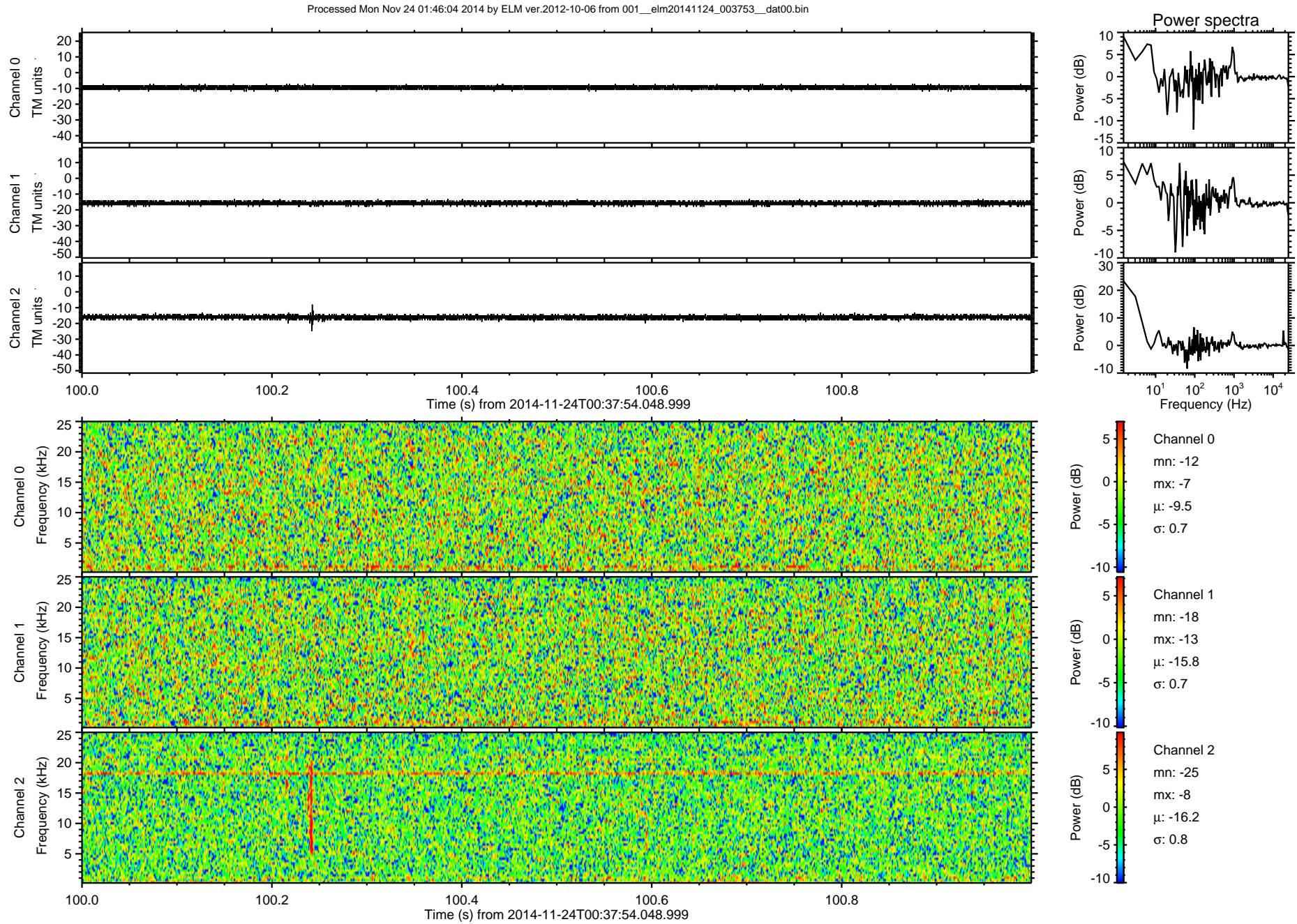


ELMAVAN 3D WAVEFORMS (Measured data sampled at 50 kHz) 51000 packets of 144 samples from 2014-11-24T00:37:54.048.999. Part 104/147



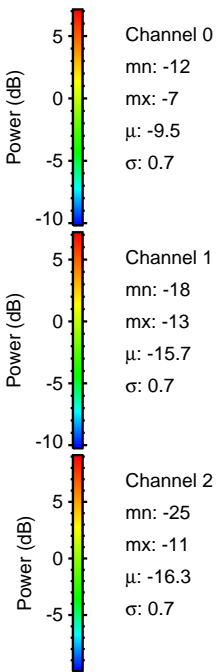
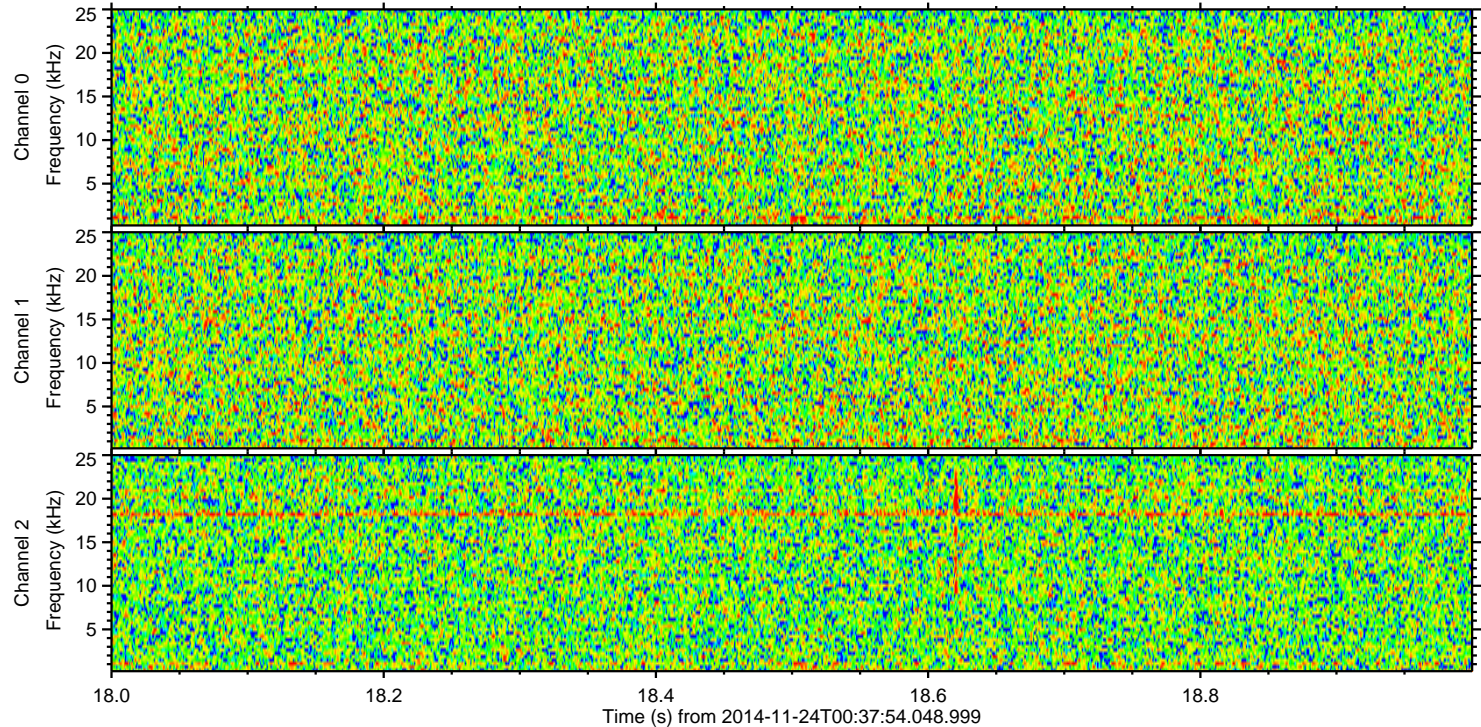
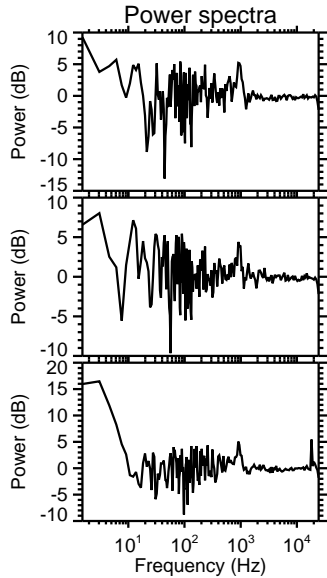
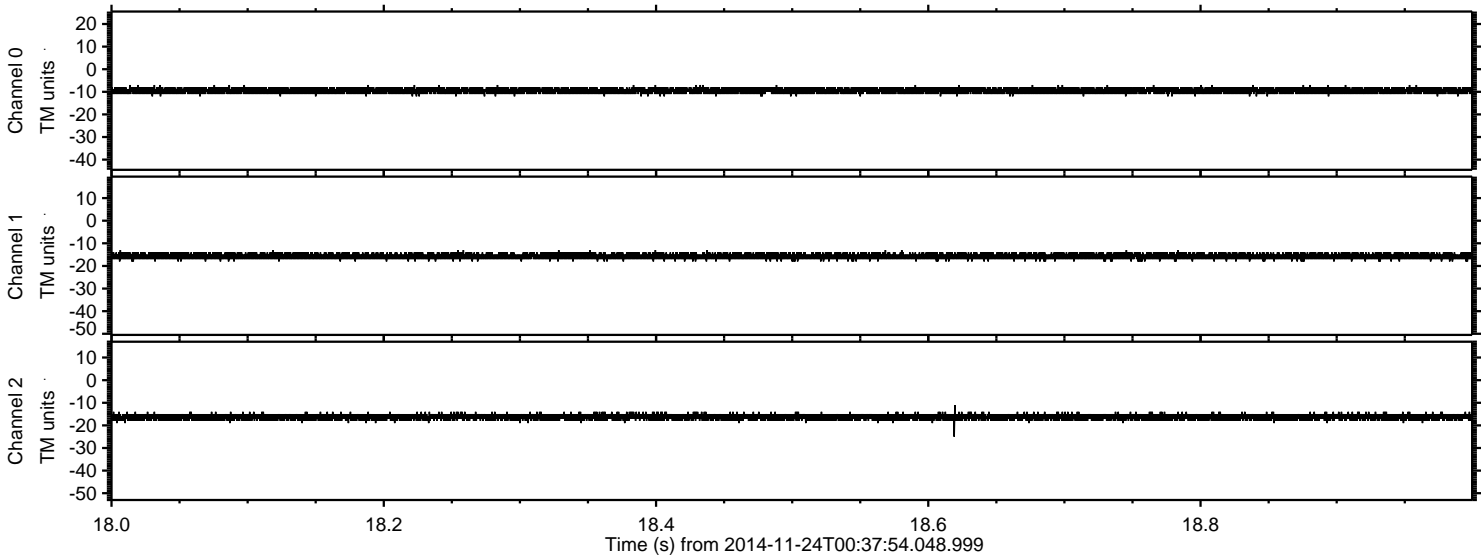


ELMAVAN 3D WAVEFORMS (Measured data sampled at 50 kHz) 51000 packets of 144 samples from 2014-11-24T00:37:54.048.999. Part 101/147



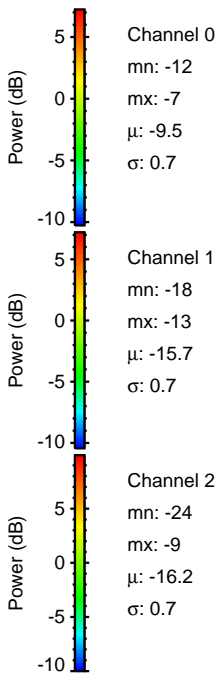
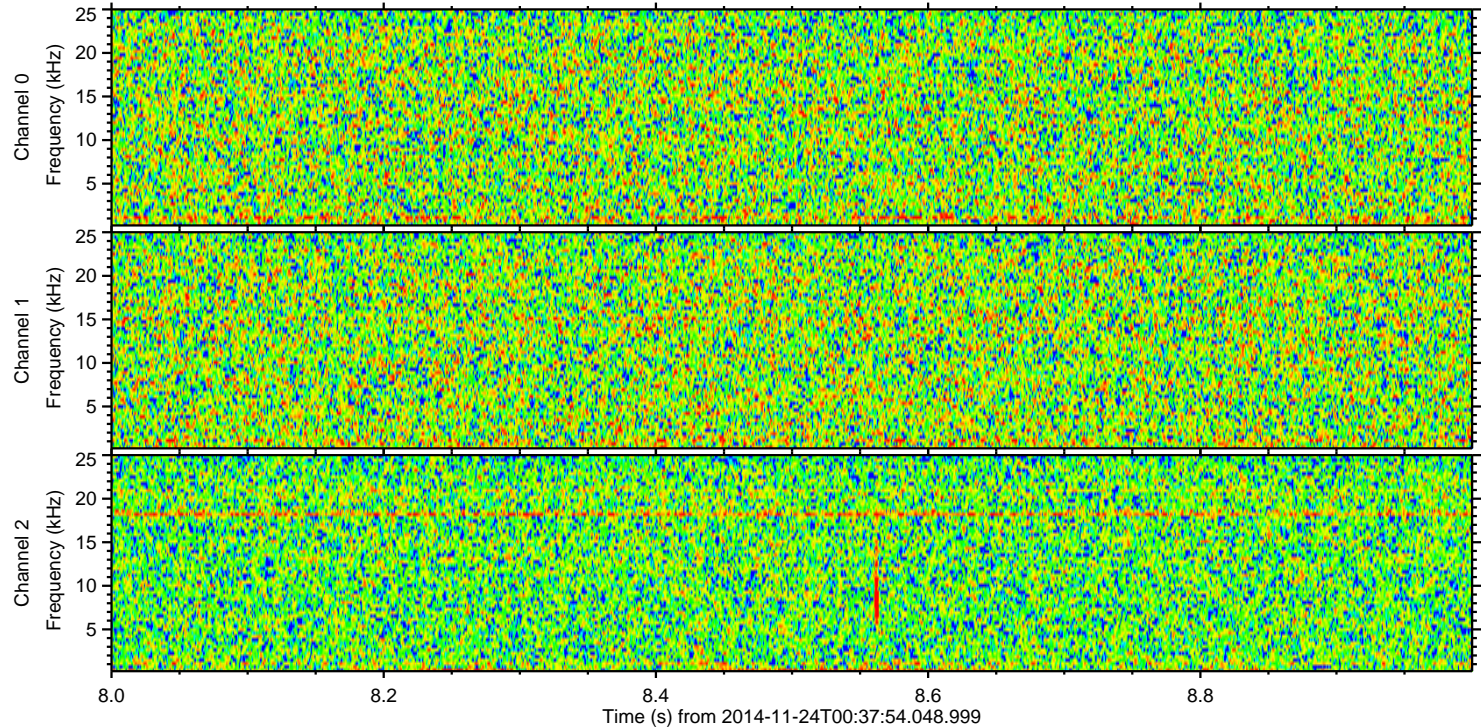
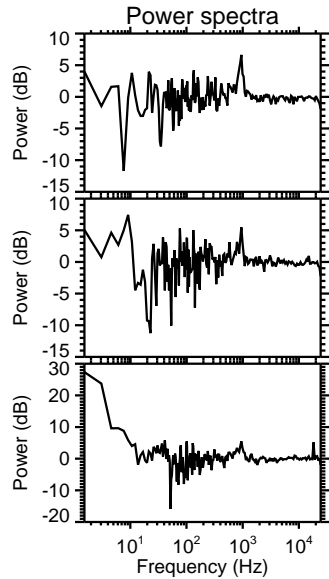
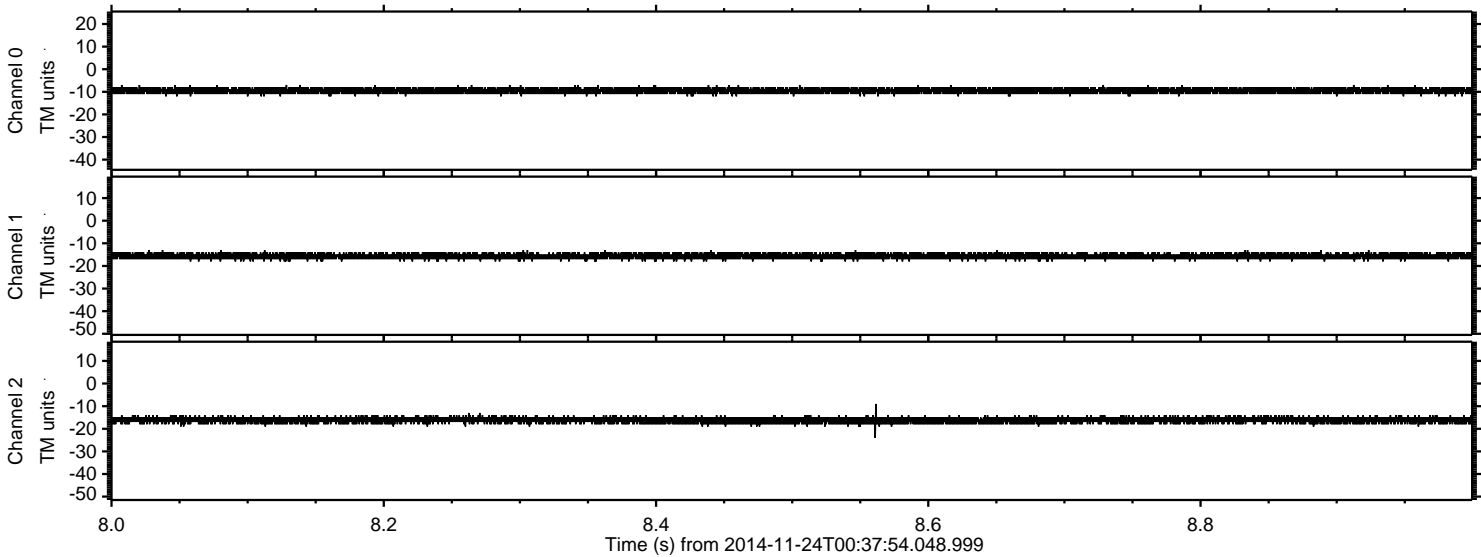


Processed Mon Nov 24 01:46:05 2014 by ELM ver.2012-10-06 from 001\_\_elm20141124\_003753\_\_dat00.bin



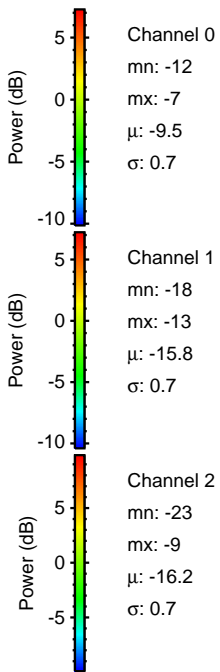
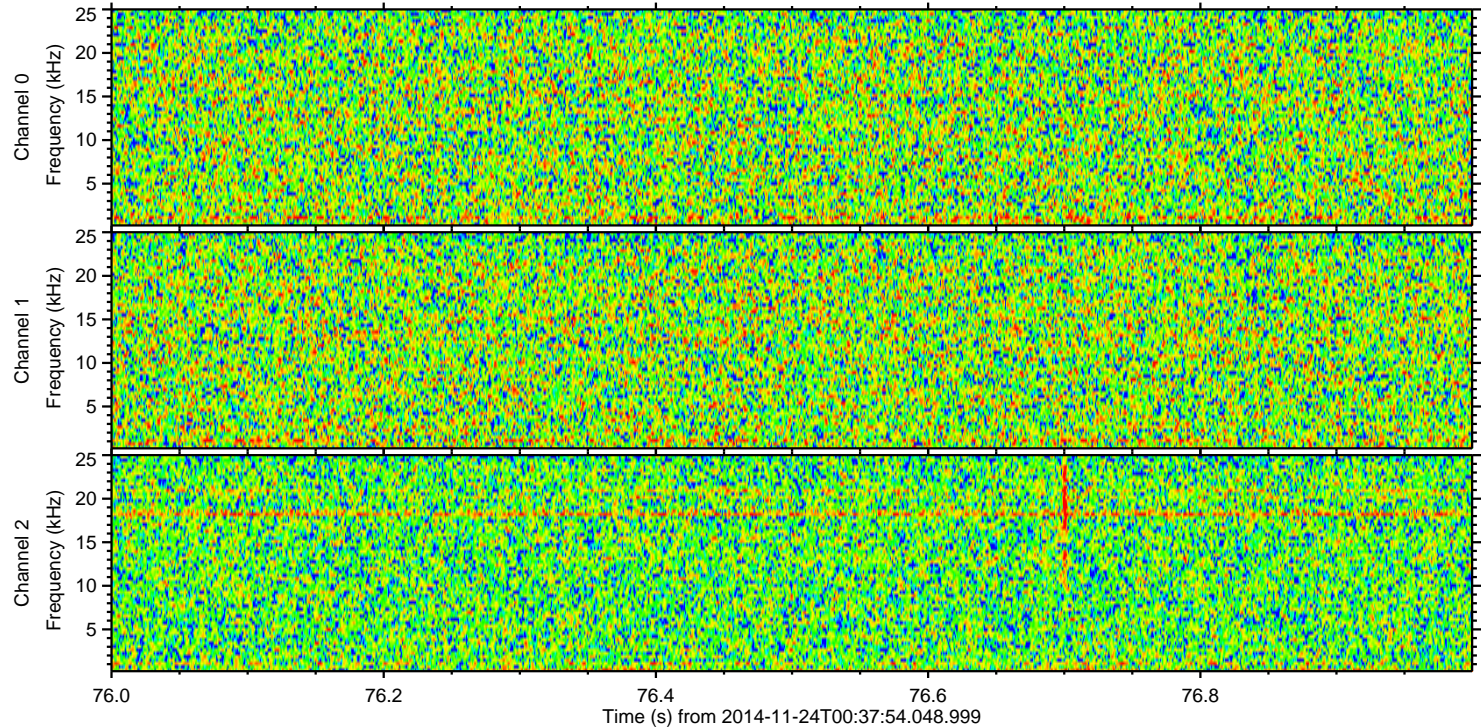
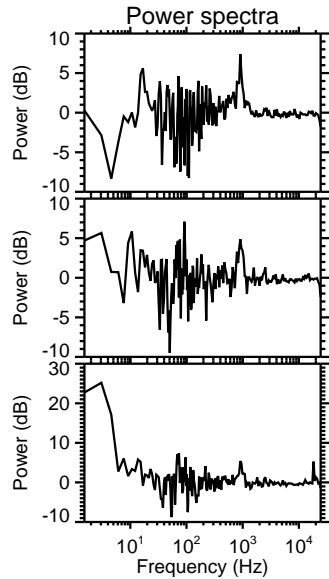
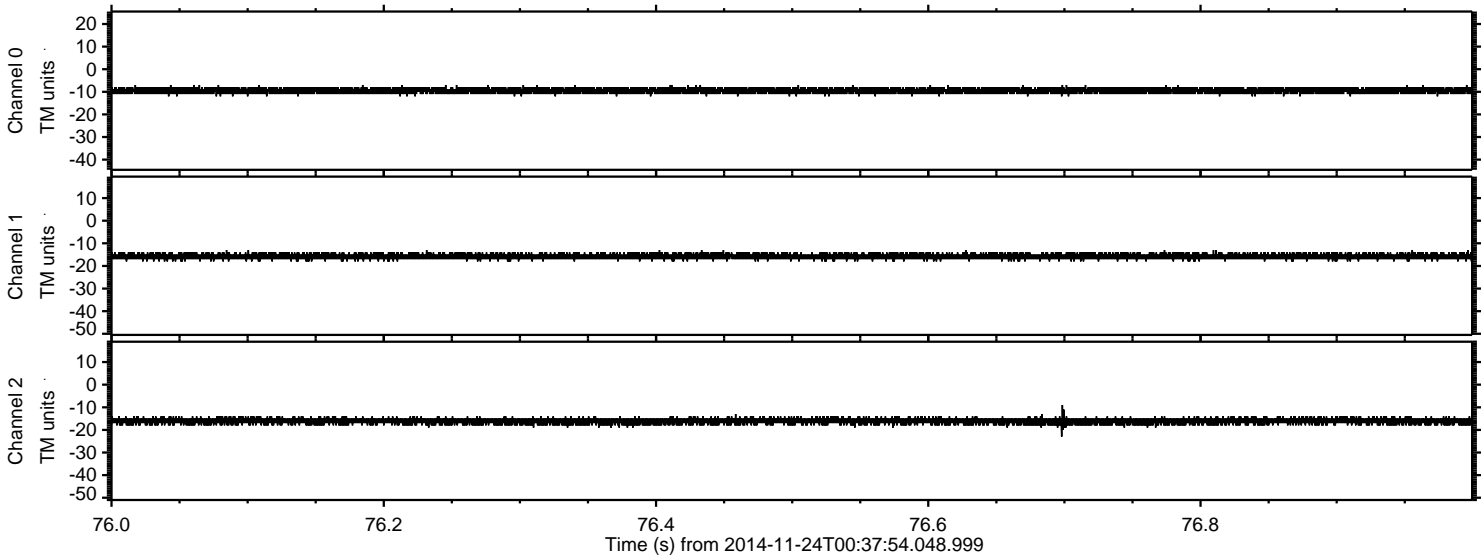


Processed Mon Nov 24 01:46:06 2014 by ELM ver.2012-10-06 from 001\_\_elm20141124\_003753\_\_dat00.bin





Processed Mon Nov 24 01:46:06 2014 by ELM ver.2012-10-06 from 001\_\_elm20141124\_003753\_\_dat00.bin





Processed Mon Nov 24 01:46:07 2014 by ELM ver.2012-10-06 from 001\_\_elm20141124\_003753\_\_dat00.bin

